

1 Edward A. Pennington (D.C. Bar No. 422006) (pending *pro hac vice*)
epennington@sgrlaw.com

2 John P. Moy (D.C. Bar No. 466908) (pending *pro hac vice*)
jmoy@sgrlaw.com

3 Sean T.C. Phelan (D.C. Bar No. 997681) (pending *pro hac vice*)
sphelan@sgrlaw.com

4 Jennifer L. Feldman (D.C. Bar No. 1013263) (pending *pro hac vice*)
jfeldman@sgrlaw.com

5 John P. Pennington (D.C. Bar No. 1018204) (pending *pro hac vice*)
jpennington@sgrlaw.com

6 **SMITH, GAMBRELL & RUSSELL, LLP**
1055 Thomas Jefferson Street, N.W., Suite 400
7 Washington, D.C. 20007
Telephone: 202.263.4300
8 Facsimile: 202.263.4329

9 Michael L. Kirby (SBN 50895)
mike@kirbyandkirbylaw.com

10 Heather W. Schallhorn (SBN 299670)
heather@kirbyandkirbylaw.com

11 **KIRBY & KIRBY LLP**
501 West Broadway, Suite 1720
12 San Diego, California 92101
Telephone: 619.487.1500
13 Facsimile: 619.501.5733

14 **Attorneys for Plaintiff InfoGation Corp.**

15

16 **UNITED STATES DISTRICT COURT**
17 **SOUTHERN DISTRICT OF CALIFORNIA**

18

19 INFOGATION CORP.,

20 Plaintiff,

21 v.

22 HTC CORPORATION and
23 HTC AMERICA, INC.,

24 Defendants.

Case No. '16CV1902 GPC BGS

COMPLAINT

DEMAND FOR JURY TRIAL

25

26

27

28

1 Plaintiff InfoGation Corp. (“InfoGation” or “Plaintiff”), for its Complaint against
2 HTC Corporation and HTC America, Inc. (collectively, “HTC” or “Defendants”),
3 demands a trial by jury and alleges as follows:

4 **NATURE OF ACTION**

5 1. This is an action for infringement of U.S. Patent No. 6,292,743 (“the ’743
6 patent”). The ’743 patent is based on inventions of Qing Kent Pu and Hui Henry Li.

7 **PARTIES**

8 2. InfoGation is a corporation under the laws of the state of Delaware, with its
9 principal place of business at 12250 El Camino Real, Suite 116, San Diego, California
10 92130.

11 3. On information and belief, Defendant HTC Corporation is a corporation
12 organized under the laws of Taiwan, Republic of China, with a principal place of
13 business at No. 23, Xinghua Road, Taoyuan District, Taoyuan City 330, Taiwan,
14 Republic of China.

15 4. On information and belief, Defendant HTC America, Inc. is a corporation
16 organized under the laws of Washington, with a principal place of business at 308
17 Occidental Avenue South, Suite 300, Seattle, Washington 98104.

18 5. Joinder is proper under 35 U.S.C. § 299. The allegations of infringement
19 contained herein are asserted against the Defendants jointly, severally, or in the
20 alternative and arise, at least in part, out of the same series of transactions or occurrences
21 relating to Defendants’ manufacture, use, sale, offer for sale, and importation of the same
22 accused products. On information and belief, Defendants are part of the same corporate
23 family of companies, and the infringement allegations herein arise at least in part from
24 Defendants’ collective activities with respect to Defendants’ accused products.
25 Questions of fact common to Defendants will arise in the action, including questions
26 relating to the structure and operation of the accused products and Defendants’ infringing
27 acts.

JURISDICTION AND VENUE

1
2 6. This Court has subject matter jurisdiction over this matter pursuant to 28
3 U.S.C. §§ 1331 and 1338(a).

4 7. Venue is proper in this District under 28 U.S.C. §§ 1391(c) and 1400(b).
5 Plaintiff's principal place of business resides within this judicial District. Moreover,
6 HTC has transacted business in this District and has committed acts of patent
7 infringement in this District.

8 8. HTC is subject to this Court's specific and general personal jurisdiction
9 pursuant to due process and/or the California Long Arm Statute, due at least in part to its
10 substantial business in this forum, including: (i) at least a portion of the infringement
11 alleged herein; and (ii) regularly doing or soliciting business, engaging in other persistent
12 courses of conduct, and/or deriving substantial revenue from goods and services provided
13 to individuals in California and in this District. Moreover, Defendant HTC America, Inc.
14 has registered with the California Secretary of State to conduct business in California.

15 **THE PATENTS-IN-SUIT**

16 9. On September 18, 2001, the United States Patent and Trademark Office duly
17 and legally issued the '743 patent, entitled "Mobile Navigation System," naming Qing
18 Kent Pu and Hui Henry Li as inventors. A true and correct copy of the '743 patent is
19 attached hereto as Exhibit A.

20 10. Plaintiff is the owner of all right, title, and interest in the '743 patent.

21 11. Each claim of the '743 patent is valid and enforceable.

22 **FACTUAL ALLEGATIONS**

23 12. InfoGation is a pioneer in the development of on-board and handheld vehicle
24 navigation solutions. InfoGation produces vehicle-based turn-by-turn driving directions
25 with accurate voice guidance, real-time travel content, and communications integration
26 solutions for the automotive, trucking, commercial fleet and consumer industries. In
27 conjunction with Microsoft and Clarion, InfoGation created the first in-car computing
28 device, the AutoPC, which was powered by Microsoft's Windows CE for Automotive

1 operating system. InfoGation also licensed its software platform to the Hertz rental car
2 company for the latest Hertz NeverLost navigation devices as well as the IntelliRoute
3 navigation software to Rand McNally for its consumer, recreational vehicle, and
4 truck/fleet product lines.

5 13. The '743 patent was developed by Dr. Qing Kent Pu, President, CEO, and
6 Founder of InfoGation, along with Dr. Hui Henry Li. The '743 patent is directed to a
7 mobile navigation system wherein the client navigation computer wirelessly connects to a
8 navigation server, receives optimal route information from that navigation server that is
9 formatted using a non-proprietary, natural language description, reconstructs the optimal
10 route from that non-proprietary, natural language description using a mapping database
11 coupled to the navigation computer, and displays the optimal route on a display screen
12 using that mapping database.

13 14. Upon information and belief, certain HTC products, including but not
14 limited to the HTC 10, HTC Amaze, HTC Aria, HTC Butterfly, HTC ChaCha, HTC
15 Desire, HTC DROID DNA, HTC Droid Incredible, HTC Evo, HTC Explorer, HTC First,
16 HTC Google Nexus One, HTC Gratia, HTC Hero, HTC Incredible, HTC Inspire, HTC J,
17 HTC Legend, HTC Merge, HTC One, HTC Panache, HTC Primo, HTC Raider, HTC
18 Rezound, HTC Rhyme, HTC Salsa, HTC Sensation, HTC Status, HTC ThunderBolt,
19 HTC Velocity, HTC Vivid, and HTC Wildfire smartphone product lines (the "Accused
20 Products"), possess features consistent with at least one claim of the '743 patent.

21 15. Each of the Accused Products has a navigation computer and a wireless
22 transceiver to connect to a navigation server. Specifically, each of the Accused Products
23 is a smartphone running the Android operating system and can connect to a Google Maps
24 navigation server through a wireless carrier's data network.

25 16. Each of the Accused Products receives optimal route information from the
26 Google Maps navigation server that has been calculated using real-time information such
27 as real-time traffic data. That optimal route information is formatted using a non-
28 proprietary, natural language description.

1 17. Each of the Accused Products reconstructs the optimal route from the non-
2 proprietary, natural language description using a coupled mapping database.

3 18. Each of the Accused Products has a display screen for displaying the optimal
4 route.

5 19. HTC does not have a license to the '743 patent and is not otherwise
6 authorized to practice the inventions claimed under the '743 patent.

7 **COUNT I**

8 **INFRINGEMENT OF U.S. PATENT NO. 6,292,743**

9 20. Plaintiff repeats, realleges, and incorporates the allegations of paragraphs 1-
10 19 as if set forth fully herein.

11 21. HTC has infringed and is currently infringing at least claim 15 of the '743
12 patent, either literally or under the doctrine of equivalents, in violation of 35 U.S.C. § 271
13 through its making, using, selling, offering for sale, and/or importing into the United
14 States smartphones, including but not limited to the HTC 10, HTC Amaze, HTC Aria,
15 HTC Butterfly, HTC ChaCha, HTC Desire, HTC DROID DNA, HTC Droid Incredible,
16 HTC Evo, HTC Explorer, HTC First, HTC Google Nexus One, HTC Gratia, HTC Hero,
17 HTC Incredible, HTC Inspire, HTC J, HTC Legend, HTC Merge, HTC One, HTC
18 Panache, HTC Primo, HTC Raider, HTC Rezound, HTC Rhyme, HTC Salsa, HTC
19 Sensation, HTC Status, HTC ThunderBolt, HTC Velocity, HTC Vivid, and HTC Wildfire
20 smartphone product lines.

21 22. HTC's infringement has been without the express or implied license of the
22 '743 patent.

23 23. Plaintiff has been damaged by HTC's infringement of the '743 patent.
24
25
26
27
28

PRAYER FOR RELIEF

WHEREFORE, Plaintiff respectfully requests that the Court enter judgment:

(a) That HTC infringes one or more claims of the '743 patent;

(b) That Plaintiff is entitled to monetary damages in an amount to be determined by the jury;

(c) That this case is exceptional, justifying an award to the Plaintiff of attorneys' fees and costs incurred in this action, pursuant to 35 U.S.C. § 285;

(d) Awarding Plaintiff's prejudgment interest and costs pursuant to 35 U.S.C. § 284; and

(e) Granting Plaintiff such other and further relief as the Court deems proper.

DEMAND FOR JURY TRIAL

Pursuant to Federal Rule of Civil Procedure 38, Plaintiff demands trial by jury on all issues so triable in this case.

DATED: July 27, 2016

KIRBY & KIRBY LLP,

By: /s/ Michael L. Kirby
Michael L. Kirby
Heather W. Schallhorn
Attorneys for Plaintiff InfoGation Corp.

EXHIBIT A

(12) **United States Patent**
Pu et al.

(10) **Patent No.:** US 6,292,743 B1
 (45) **Date of Patent:** Sep. 18, 2001

(54) **MOBILE NAVIGATION SYSTEM**

0 790 591 A 8/1997 (EP) .
 0 800 092 A 10/1997 (EP) .

(75) Inventors: **Qing Kent Pu; Hui Henry Li**, both of San Diego, CA (US)

* cited by examiner

Primary Examiner—William A. Cuchlinski, Jr.
Assistant Examiner—Edward Pipala

(73) Assignee: **Infogation Corporation**, San Diego, CA (US)

(74) *Attorney, Agent, or Firm*—Lyon & Lyon LLP

(57) **ABSTRACT**

(*) Notice: Subject to any disclaimer, the term of this patent is extended or adjusted under 35 U.S.C. 154(b) by 0 days.

A client navigation system establishes a wireless connection to a navigation server on a computer network. The client requests a route by uploading start and stop specifications. The server calculates an optimal route based on real-time data available on the network. A generic natural language description is used to specify the optimal route downloaded to the client. The natural language description is independent from the local mapping database software on the client and includes a plain text description for each link using pre-defined generic terms. The client interprets the route, interfaces with the local mapping database and reconstructs the optimal route using a mapping reconstruction algorithm. The route is displayed on the client navigation system using whatever mapping database is present. An enhanced user-interface data-entry feature is provided that anticipates data being entered by users to minimize the data-entry process. The current time zone is derived from the current GPS position and is used to set the clock on the navigation system in the client. Maps are automatically scrolled on a display screen so that a representation of the automobile is always pointing to the right or to the left to allow for additional look-ahead space on certain display systems. A telephone coupled with the navigation system automatically displays the current local time for a called party upon dialing out. The dialed number is used to query a local database for providing local time information.

(21) Appl. No.: **09/227,331**

(22) Filed: **Jan. 6, 1999**

(51) **Int. Cl.**⁷ **G06F 7/00**

(52) **U.S. Cl.** **701/202; 701/117; 701/209; 455/456**

(58) **Field of Search** **701/200, 201, 701/202, 207, 208, 209, 211, 213, 117; 340/988, 990, 995; 455/456, 457**

(56) **References Cited**

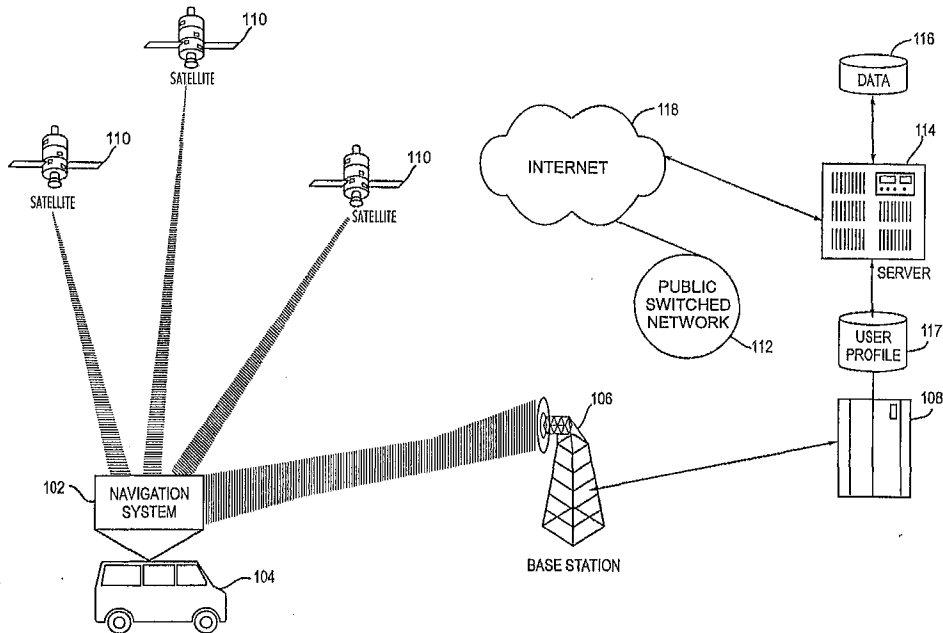
U.S. PATENT DOCUMENTS

5,745,867	4/1998	Mills	455/456
5,808,566	9/1998	Behr et al.	340/995
5,818,356	10/1998	Schuessler	340/995
5,938,721	* 8/2000	Dussell et al.	701/211
5,948,040	* 9/1999	DeLorme et al.	701/201
6,026,309	* 2/2000	Moon et al.	701/200
6,085,098	* 7/2000	Moon et al.	455/457

FOREIGN PATENT DOCUMENTS

197 50 778 A 6/1998 (DE) .

22 Claims, 10 Drawing Sheets



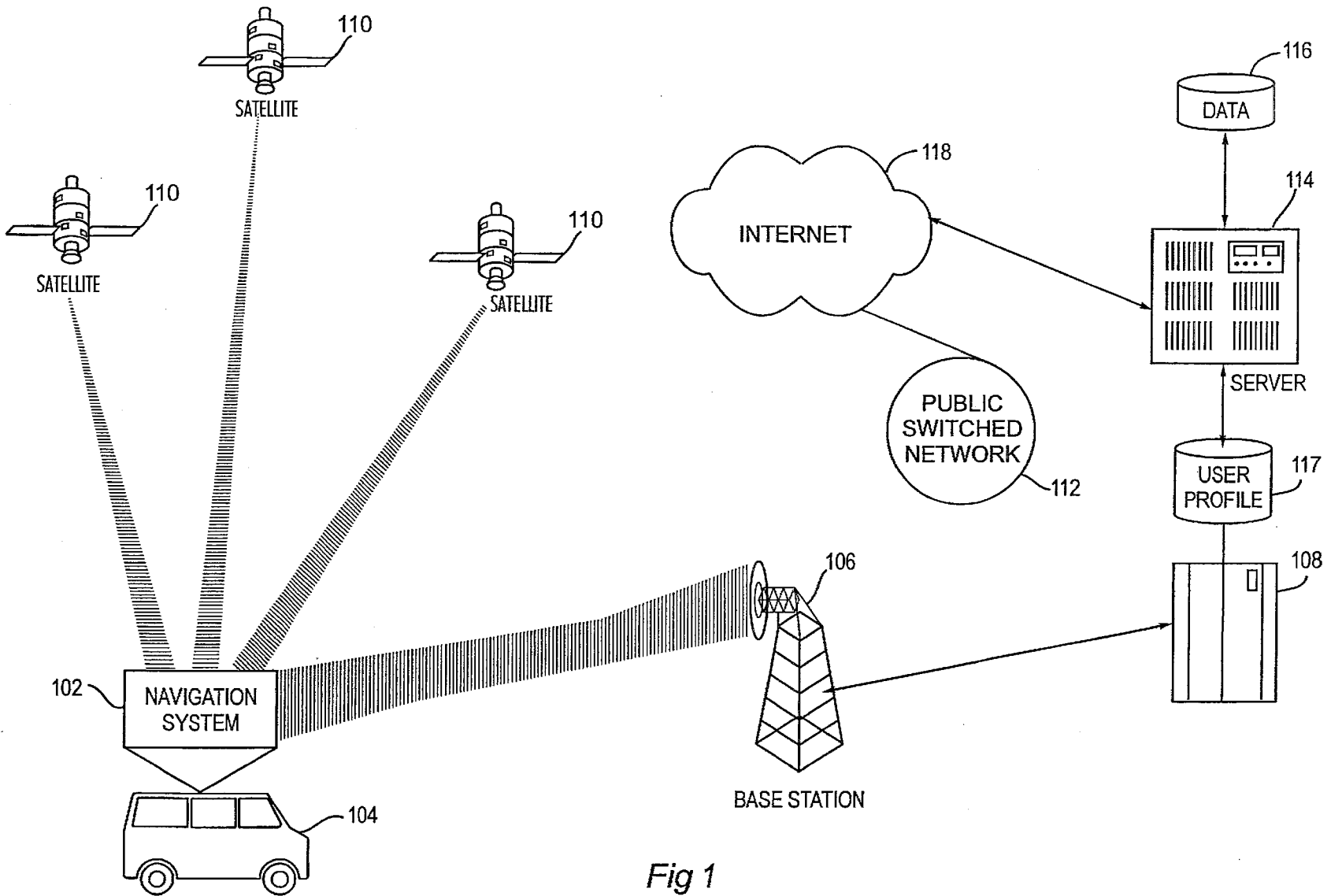


Fig 1

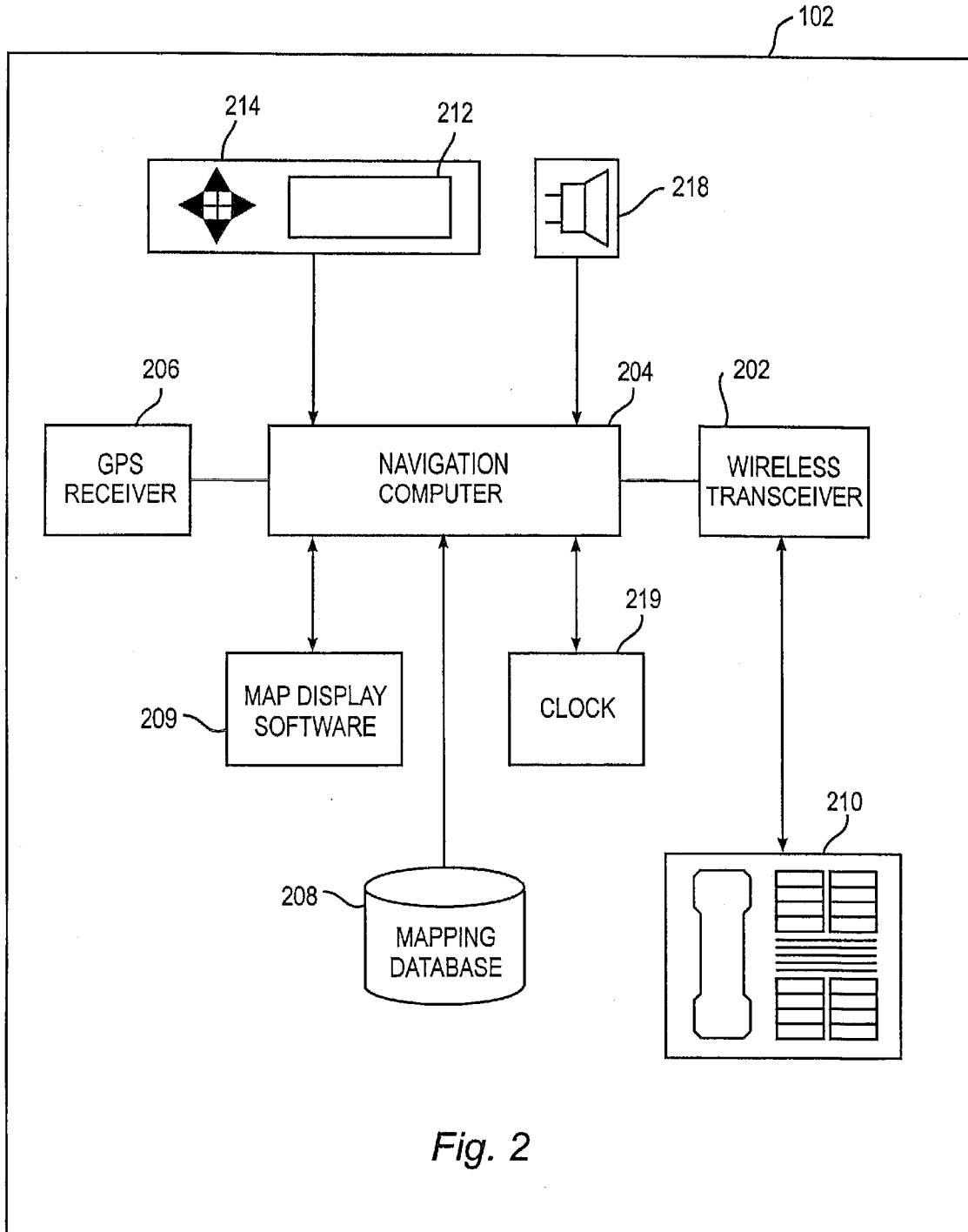


Fig. 2

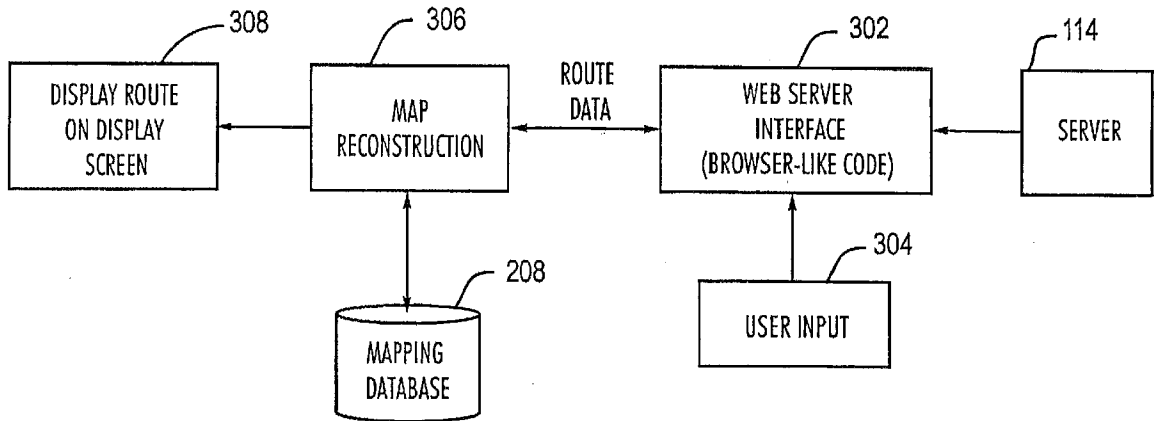


Fig. 3

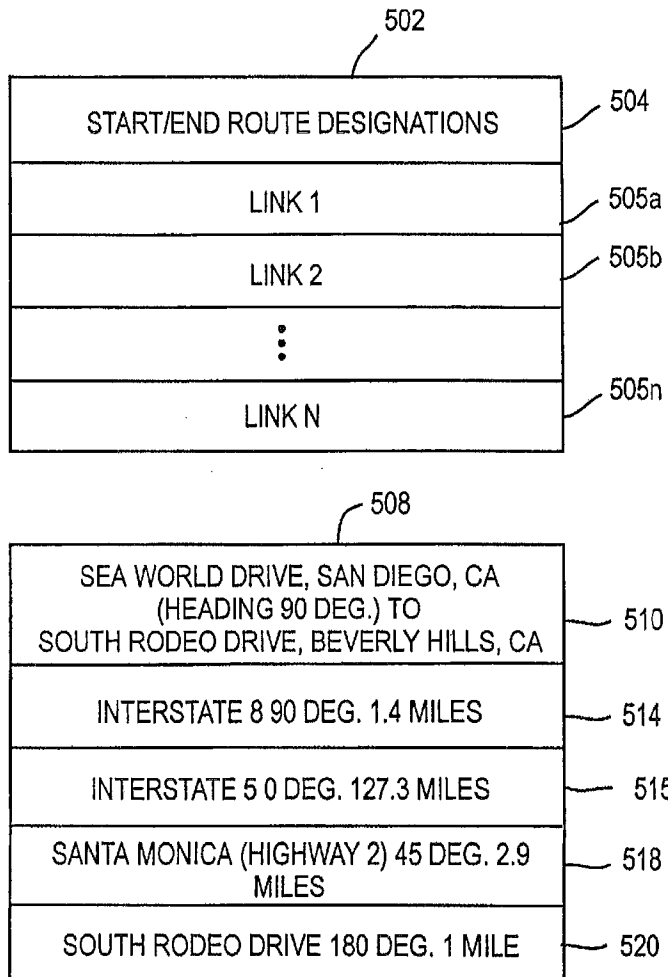


Fig. 5

Fig. 4

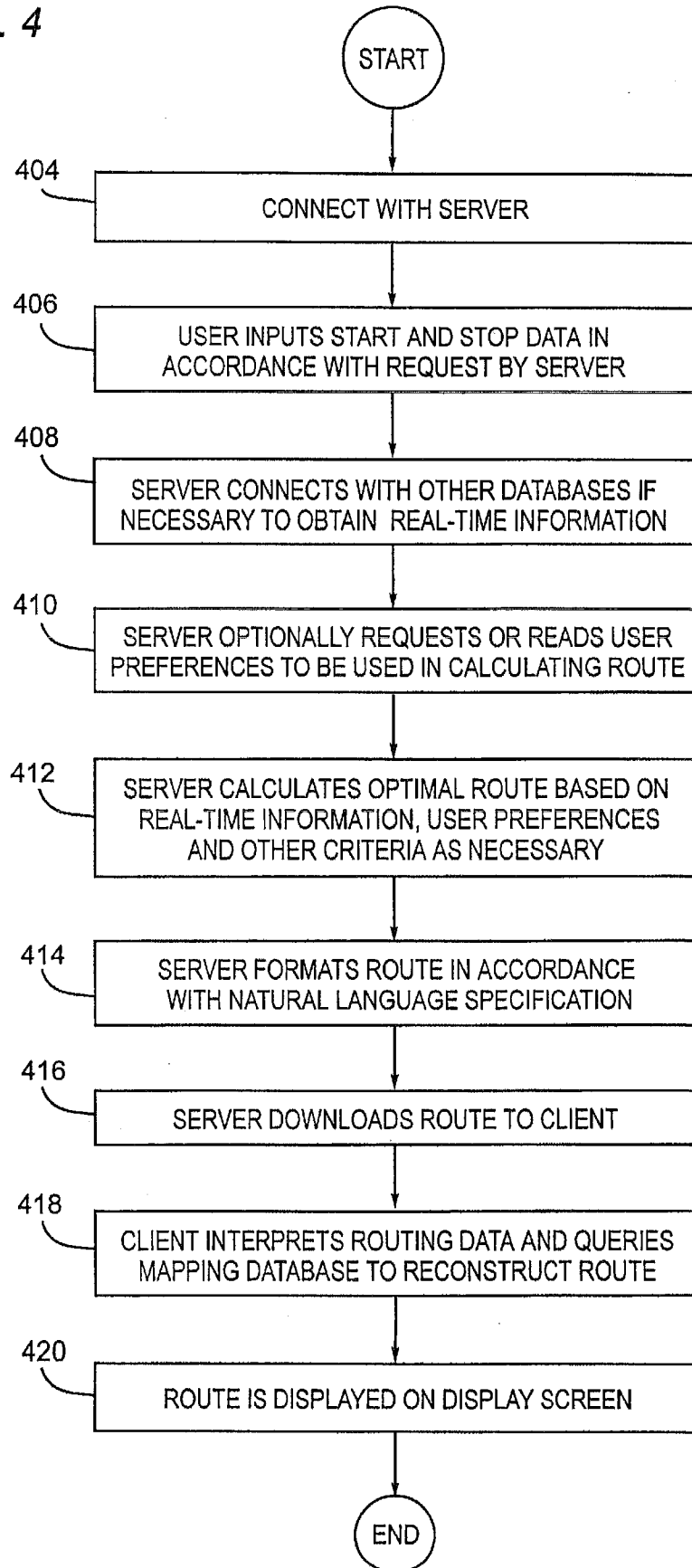
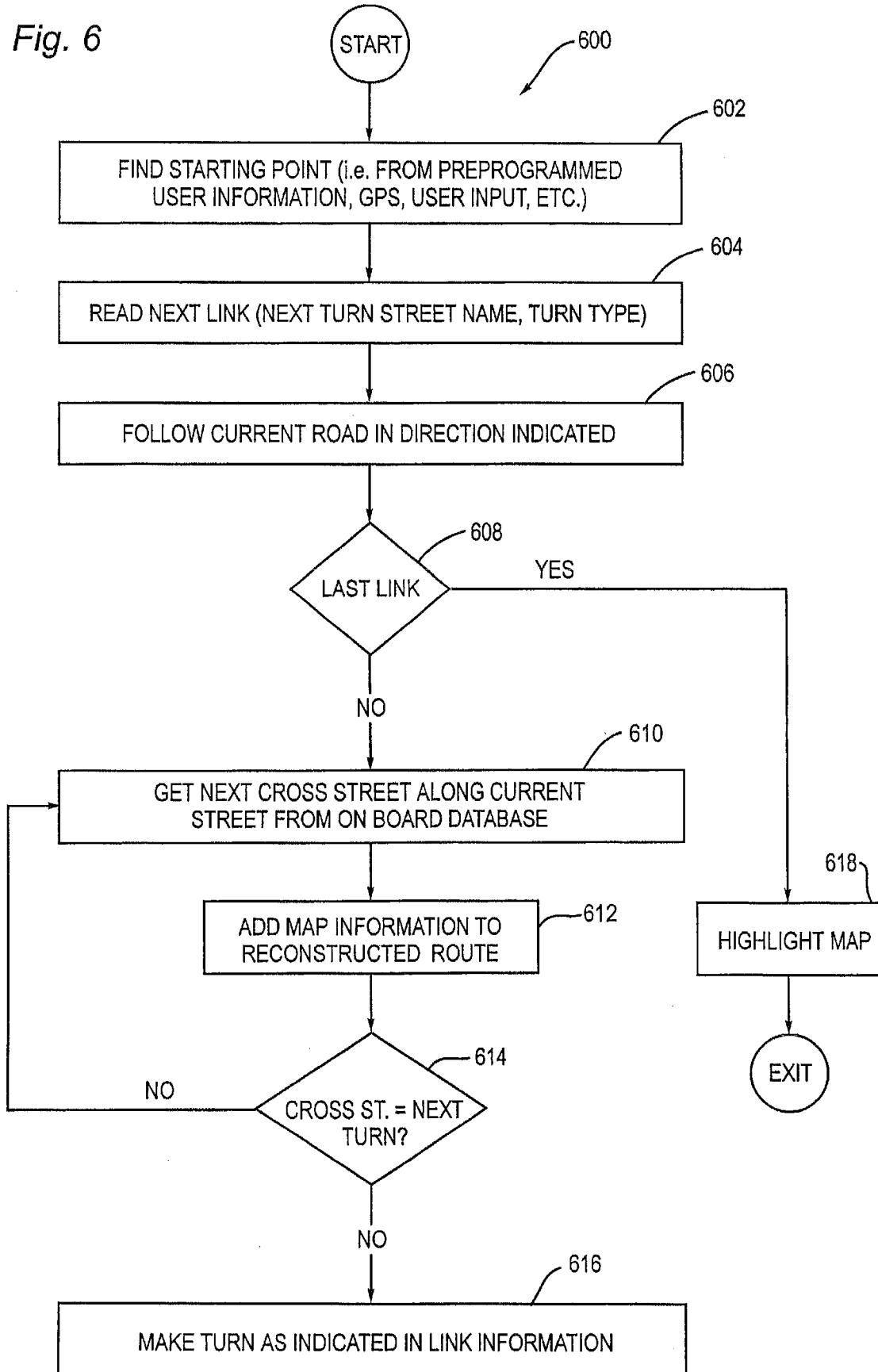


Fig. 6



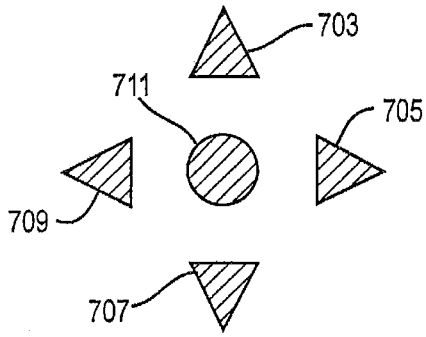


Fig. 7A

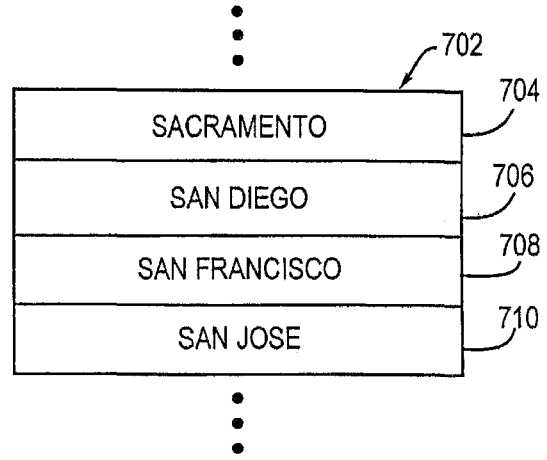


Fig. 7B

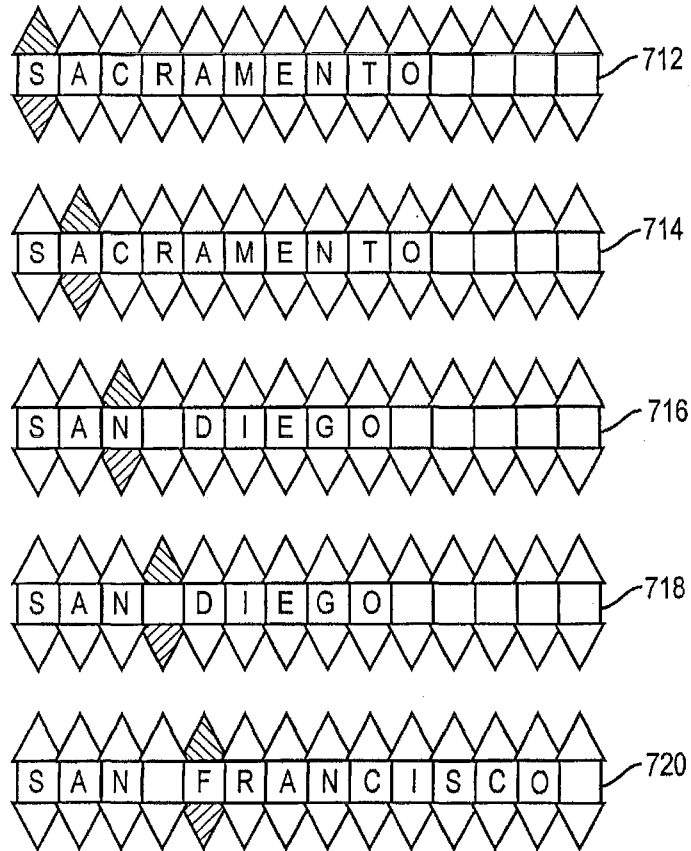
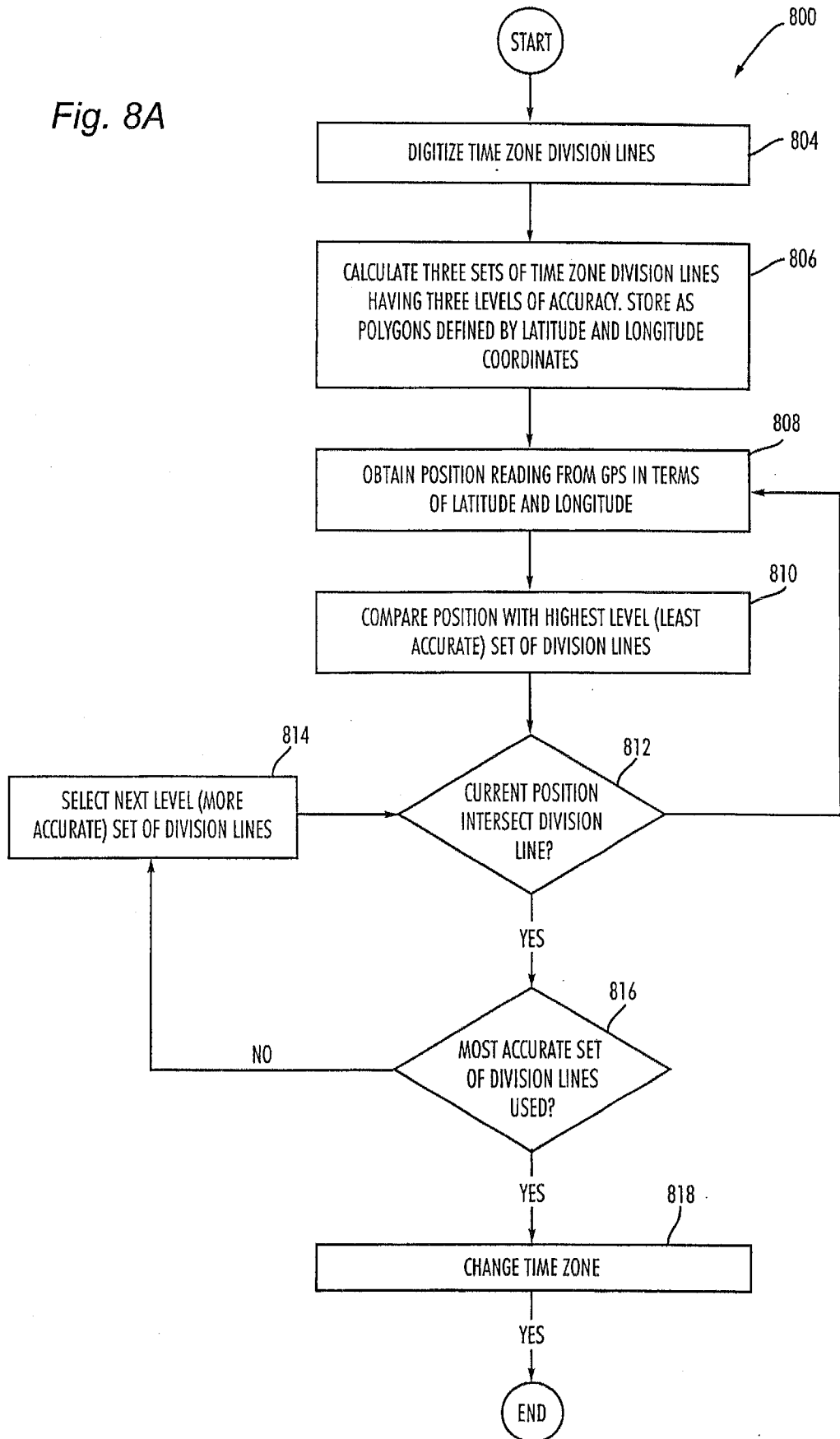


Fig. 7C

Fig. 8A



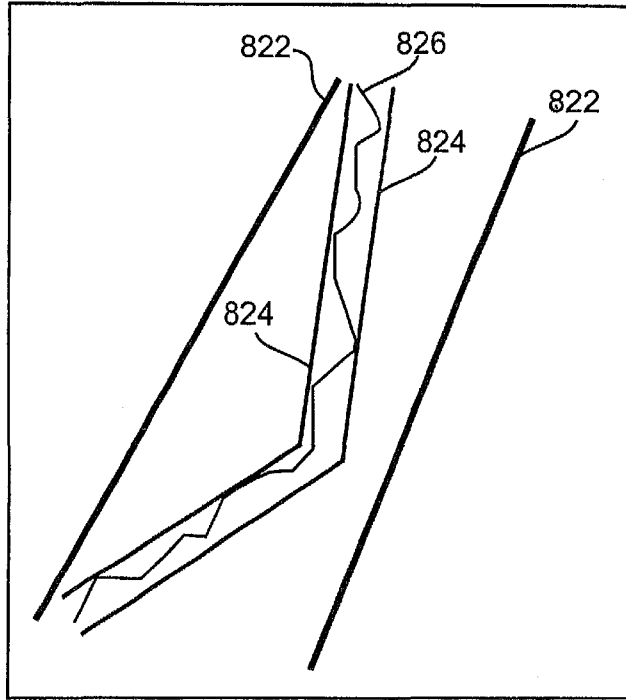


Fig. 8B

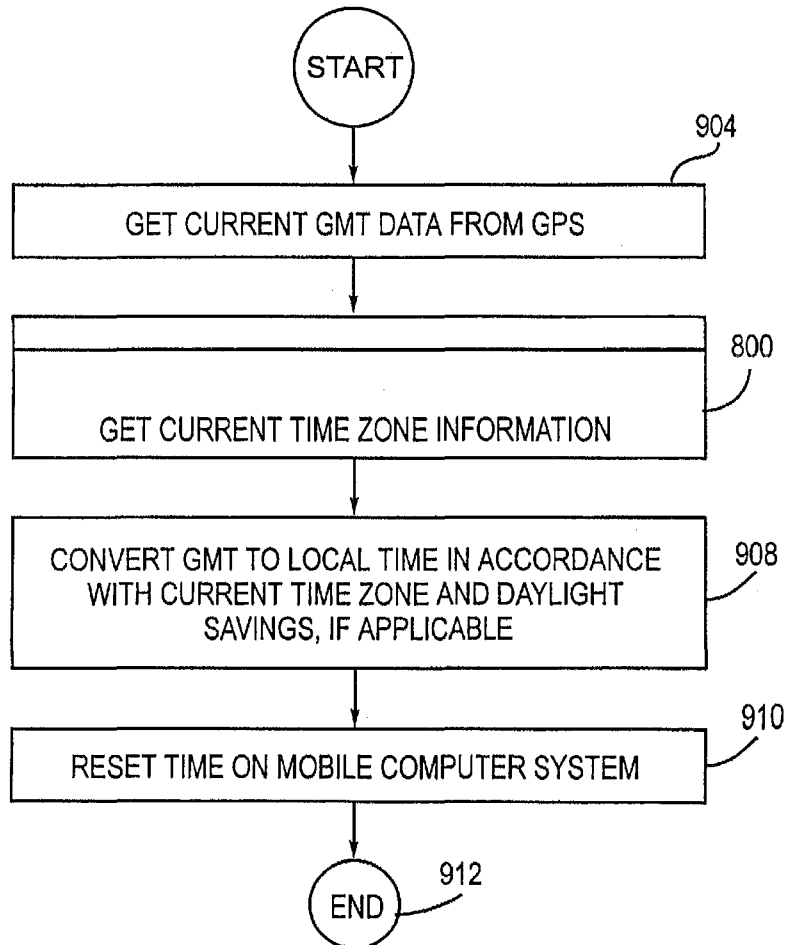


Fig. 9

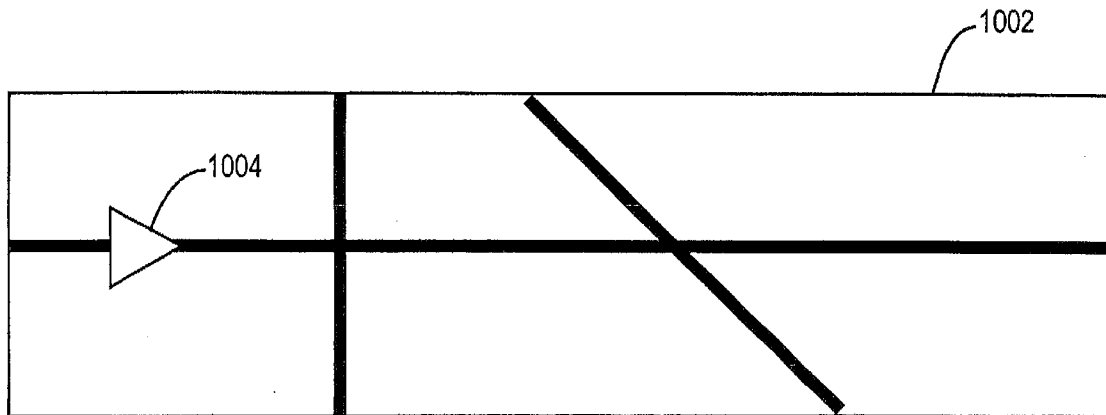


Fig. 10A

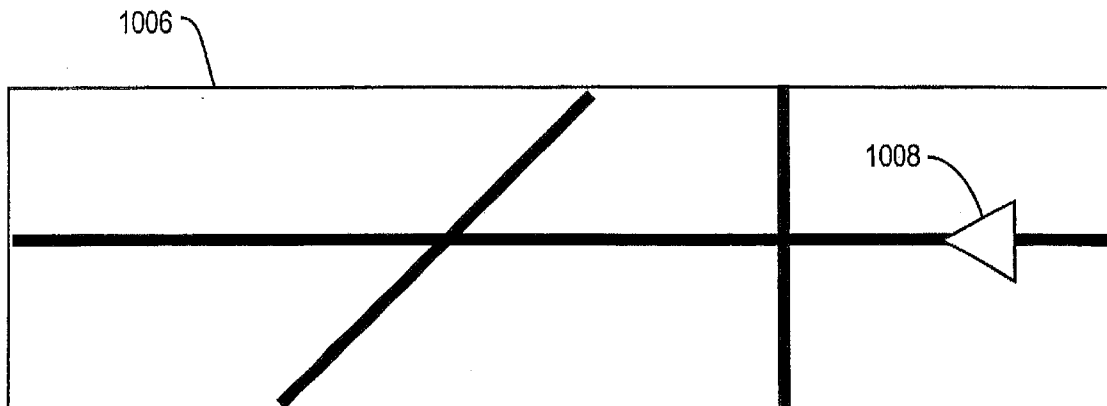


Fig. 10B

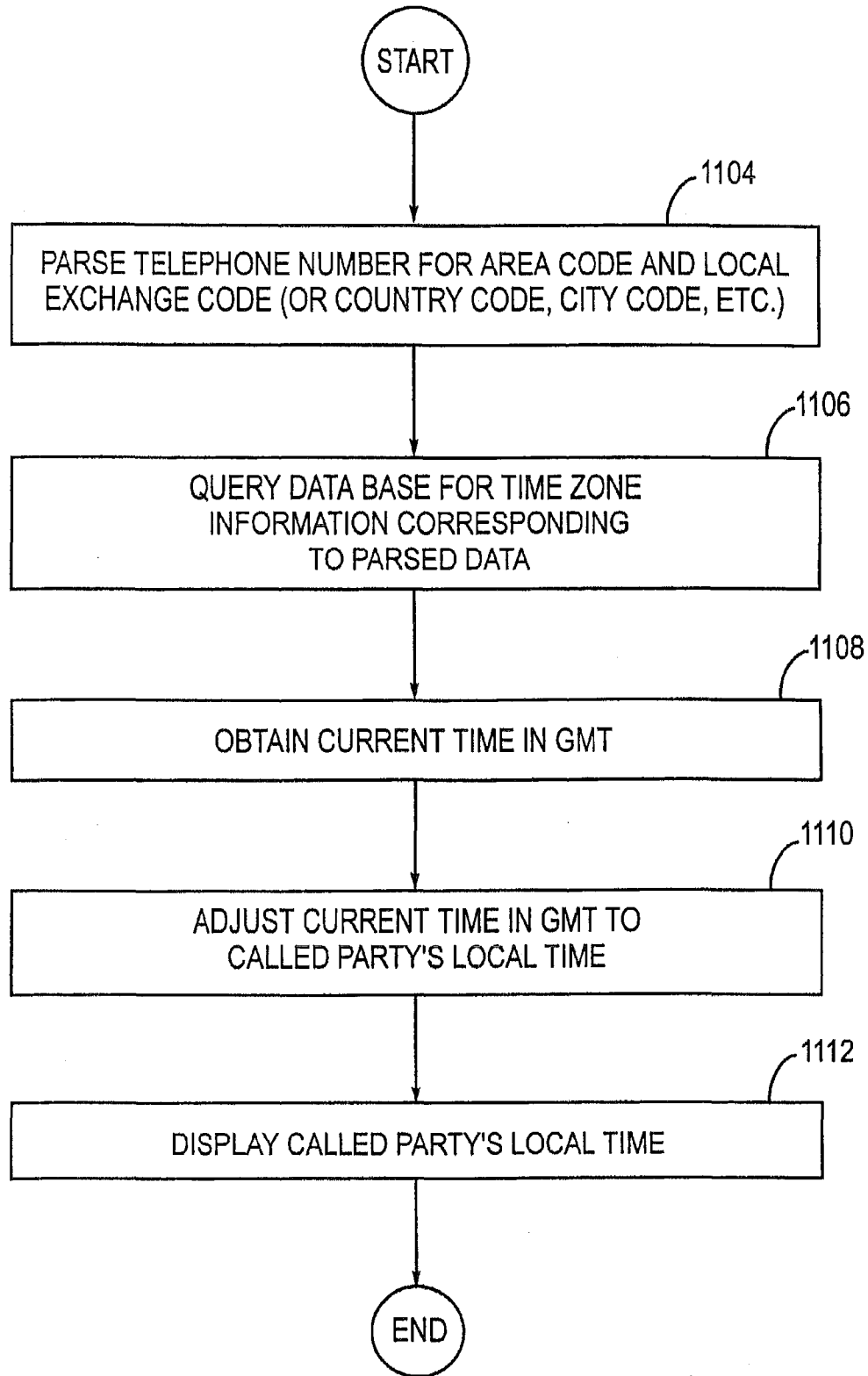


Fig. 11

US 6,292,743 B1

1

MOBILE NAVIGATION SYSTEM**BACKGROUND OF THE INVENTION**

1. Field of the Invention

The present invention relates generally to mobile navigation system and apparatus, and more particularly to a distributed navigation system having a wireless connection to a server for calculating optimal routes using real-time data.

2. Related Art

In recent years, navigation systems, in which automobiles are equipped with a navigational computer that includes a display screen, an input means such as a keypad or a remote control, and a storage means such as a CD, have become popular. Geographical map and routing data is typically stored on the CD. The map database on the CD can have various levels of detail. At the very least, the map database includes geographical information at the major road level. Additional details that can be included are minor roads, turn restrictions, one-way streets, highway ramp configurations, hotel, restaurant and other business information, traffic history, emergency facility locations and the like. The map databases with routing information are referred to as navigable map data or turn-by-turn data. The levels of detail stored on such databases depend on product and marketing factors, including cost and demand, as well as the physical storage capacity limitations.

Such navigation systems are stand-alone devices that rely completely on data stored on the local storage device for geographical and other information. Thus, the capacity of the storage device becomes a limiting factor as to how much information is available to users. In addition, users must update their mapping databases frequently to stay current. Typically, the cost of mapping databases increase with the amount of details provided thereon.

It would be desirable to have a navigation system that provides current information to users without the need to update their local databases whenever changes occur. In addition, it would be desirable to include real-time information such as traffic, weather and road conditions and the like for determining optimal routes. Further, it would be desirable to increase the level of details provided by current navigation systems without requiring expensive databases and/or databases that are beyond the capacity of the local storage device.

A current system, which connects to on-line servers in real-time, is Toyota's MONET navigation system implemented in Japan. The MONET system establishes a connection to the server that is responsive to requests for real-time information including current traffic conditions and the like. The server gathers the requested information and downloads the data to the client.

In this fashion, the MONET system, and other similar current systems, provide information and/or services to users in real-time. This information and/or services include real-time traffic data, road restrictions, email services, news, sports, and weather reports, points-of-interest data, and emergency information such as police, hospital and roadside assistance. These current systems also typically allow the user to download pictures of current traffic conditions, points of interest and the like.

In these current systems, all geographical data transmitted by the server is in a propriety format. That is, downloaded information used to describe geographical data, such as point-of-interest addresses and detailed map data, includes data points, indices and the like that are specific to the particular mapping database used on the client.

2

Accordingly, the client navigation system must have a particular pre-defined mapping database installed in order to work with the server. In some cases, the mapping database used by the client and server must be identical. If there is a mismatch between the expected mapping database and the actual mapping database used on the client, the client cannot properly interpret the geographical data downloaded from the server and the system will fail to operate.

Accordingly, customers using these current systems must obtain the latest version of the mapping database software available. This presents a major burden for customers and manufacturers alike due to the high frequency in which these databases must be updated.

In addition, the data downloaded by the client generally requires high bandwidth communication channels due the sheer volume of data transmitted by these current systems. Such high bandwidth communication channels are expensive and may not be readily available in all areas. It would be desirable to develop a system that requires lower bandwidth communication channels than that required by these current systems.

Another problem with the current systems outlined above is that the client must include sophisticated algorithms for calculating optimal routes. In addition, these route-calculating algorithms in the client must be updated in accordance with current services and options available on the server. For example, if the server were updated to provide a new or modified feature to the client, the client must be specifically customized to support the new or modified feature. Thus, a very close coordination between the software installed on the server and the software installed on the clients must be maintained. This creates an additional economic burden for customers.

Another problem with the current systems is that the proprietary server cannot be used with navigation systems and mapping databases provided by other manufacturers. As stated, using current systems, client software must be frequently customized and very specific mapping software must be used. It would be desirable to have a navigation system that can be easily adapted to work with a variety of mapping software and navigational systems.

SUMMARY OF THE INVENTION

The present invention alleviates many of the failings of the prior art. One advantage of the present invention is that it alleviates the need to have specific pre-defined turn-by-turn mapping databases installed on the client. The present invention can be used with any mapping database installed on the client navigation system. In addition, the level of detail necessary for the client-installed mapping database is minimal.

Another advantage of the present invention is that the client navigation system can be made much less complex than those used in current systems. A feature of the present invention is that the server performs routing generation on behalf of the client. The routing generation takes all real-time variables into account, as well as user preferences and the like. Accordingly, the present invention alleviates the need to install sophisticated and expensive routing algorithms and/or complex hardware components on the client that are used to perform local routing calculations. In many cases, the role of the client system can be limited to displaying routes generated by the server.

Another advantage of the present invention is that it does not require software changes on the client navigation systems whenever the server provides new and/or modified

EXHIBIT A

0012

US 6,292,743 B1

3

features. All enhancements to the services provided by the server are independent from the software installed on the client.

Another advantage of the present invention is that it alleviates the need for users to update their mapping database whenever a new version is available. A feature of the present invention is that the server is hardware and software independent from the client. In this fashion, navigation systems from any vendor can be easily adapted to work with the server of the present invention.

Another feature of the present invention is that it uses a natural language to describe optimal routing information that can be interpreted by a variety of clients with minimal software additions. An advantage of the present invention is that low bandwidth communication channels can be used to download the information from the server to the clients. A further advantage of the present invention is that the natural language routing descriptions can be highly compressed to thereby reduce the already low bandwidth requirements of the wireless communication channels.

A generic natural language description is used to specify optimal routing information that is transmitted from the server to the client. The natural language description is completely independent from the local mapping database software used on the clients, and can therefore be used in conjunction with any type of mapping database software.

The client navigation system establishes a wireless connection to the server via cellular telephone technology or the like. Once connected, the client requests a specific route by uploading start and stop specifications to the server. The server independently calculates an optimal route for the user based on real-time and current data available to the server, as well as user preferences or the like.

The routing information is formatted using a natural language specification in accordance with each specific embodiment of the present invention. Generally this specification includes a plain text description for each link in the route using pre-defined generic terms such as road names and turning directions. The client interprets this routing data and interfaces with the local mapping database to reconstruct, in the format required by the client, the optimal route from the natural language description. This is accomplished by using a mapping reconstruction algorithm stored on the client.

Once the route is reconstructed, it is displayed on the display screen on the client navigation system, using whatever mapping database is present on the client. In this fashion, the database software used on the server is completely hardware and software independent from that used on the client.

In one embodiment of the present invention, an enhanced user-interface data-entry feature is provided. This "auto complete" feature anticipates data being entered by users to minimize the data-entry process. This feature is especially useful in an automobile navigation system due to the inherent difficulty in entering data while driving.

In another embodiment of the present invention, the current time zone is derived from the current GPS position. This information is used to set the clock on the navigation system to a highly accurate local time. In addition, this feature avoids the problem found in current systems that do not update local clocks.

In another embodiment of the present invention, maps are automatically scrolled on the display screen so that a representation of the automobile always points to the right or to the left. This enhanced user-interface feature provides a

4

more efficient display allowing for more look-ahead space on displays that are wider than they are tall.

In another embodiment of the present invention, a telephone coupled with the navigation system automatically displays the current local time for a called party, even if the called party is in a foreign country. The dialed number is used to query a local database for providing local time information for the called party.

Further features and advantages of the invention, as well as the structure and operation of various embodiments of the invention, are described in detail below with reference to the accompanying drawings.

BRIEF DESCRIPTION OF THE FIGURES

The present invention is described with reference to the accompanying drawings, wherein:

FIG. 1 depicts an operational environment according to an embodiment of the present invention;

FIG. 2 is a block diagram depicting details of the navigation system according to an embodiment of the present invention;

FIG. 3 is a block diagram depicting some of the functional components of the navigation system in accordance with an embodiment of the present invention;

FIG. 4 is a flowchart that depicts a process that can be used in an embodiment of the present invention;

FIG. 5 is a block diagram describing a natural language format that can be used to specify route in accordance with an embodiment of the present invention;

FIG. 6 is a flowchart depicting a process that can be used to implement the map reconstruction feature in accordance with an embodiment of the present invention;

FIGS. 7A, 7B and 7C are block diagrams depicting an enhanced user-interface feature for data-entry in accordance with an embodiment of the present invention;

FIG. 8A is a flowchart depicting a process that can be used to implement an enhanced feature for determining current time zone information in accordance with an embodiment of the present invention;

FIG. 8B is a depicts three sets of time zone division lines ranging in accuracy from course to medium to fine in accordance with an embodiment of the present invention;

FIG. 9 is a flowchart depicting a process that can be used to calibrate a real-time clock in the navigation computer 204 in accordance with an embodiment of the present invention;

FIGS. 10A and 10B depict a navigational mapping system display in accordance with an embodiment of the present invention; and

FIG. 11 is a flowchart depicting a process that can be used to implement the current time reporting feature of the present invention.

In the figures, like reference numbers generally indicate identical, functionally similar, and/or structurally similar elements. The figure in which an element first appears is indicated by the leftmost digit(s) in the reference number.

DETAILED DESCRIPTION OF THE PREFERRED EMBODIMENTS

FIG. 1 depicts an operational environment according to an embodiment of the present invention. A navigational system 102 is installed in a mobile unit such as an automobile 104. In one embodiment, the navigation system 102 receives data from Global Positioning System (GPS) satellites 110 for

tracking purposes. A minimum number of three satellites is needed to obtain accurate readings. As described below, the connection to the GPS satellites 110 is an optional component of the navigation system 102 according to the present invention.

The navigation system 102 has the capability for wireless communications. In this example, one use of the wireless communication feature is to connect the navigation system 102 with a computer network, such as the Internet 118. The wireless communication feature of the present invention is also used for providing standard telephony functions.

In one example, cellular technology is used to implement the wireless communication feature of the present invention. In FIG. 1, the base station 106 and the mobile switching office 108 represent a portion of a typical cellular network. The base station 106 sends and receives radio signals to and from the navigation system 102. The mobile switching office 108 is coupled to the base station 106 via standard telecommunication transmission lines. Likewise, the mobile switching office 108 is coupled to the public switched telephone network 112 via standard telecommunication transmission lines. The public switched network 112 is coupled to the Internet 118 via a point-of-presence, which is typically implemented using high bandwidth T3 telecommunication channels or the like.

A navigation server 114 is coupled to the Internet 118. The navigation server 114 is used to generate and download optimal routing information to the navigation system 102 in accordance with real-time data gathered from various providers on the Internet 118, and current mapping data stored in the database 116, and user profile information stored in the database 117.

Note that the cellular network is just one example of a technology that can be used to implement the wireless communication feature of the present invention. In other embodiments, different types of wireless technology can be used, such as low orbit or geosynchronous orbit satellite communications. In fact, any type of wireless technology can be used to provide the wireless communication feature of the present invention.

Further, the Internet 118 is used in a preferred embodiment of the present invention due to its wide use and availability. However, any type of computer network can be used in alternate embodiments of the present invention. As such, the use of the examples of a cellular network and the Internet 118 should not be construed to limit the scope and breadth of the present invention.

Details of the navigational system 102 are depicted in FIG. 2. Specifically, the navigation system comprises a navigation computer 204, a mapping database 208, a display screen 212, a keypad input device 214, a speech interface 218, a GPS receiver 206, a wireless transceiver 202 and a telephony device 210.

Note that these components, such as the GPS receiver 206 and/or the wireless transceiver 202 may be imbedded within the navigation computer 102. Alternatively, such components may be implemented as discrete external devices coupled to the navigation computer 102 through external ports, such as RS-232, SCSI, USB ports or the like.

Any type of general or special purpose computer system can be used to implement the navigation computer 204. Typically the navigation computer 204 includes a CPU, local working memory, or RAM, non-volatile program memory, or ROM, and some form of non-volatile external memory such as a CD storage system or the like. An example of a general-purpose computer system that can be used in an

embodiment of the present invention is a Clarion Auto PC manufactured by Clarion Corporation of America.

The display screen 212 is used to display output from the navigation computer 204. For example, geographical maps from the mapping database 208 are displayed on the display screen 212. In this example, the display screen 212 is a liquid crystal display that conforms to the Auto PC platform specification maintained by Microsoft Corporation. In this example, using the Auto PC platform specification, the navigation system 102 fits into a standard 1-DIN unit in the dash of an automobile 104. In accordance with this example standard, the display screen 212 is 256 pixels wide by 64 pixels tall. An improved method for displaying a navigational mapping system on such a display is described in detail below with reference to FIGS. 10A and 10B.

The keypad device 214 is coupled to the navigation computer 204 and is used for inputting data. For example, start and stop designations for a desired navigational route are input into the navigation computer 204 via the keypad 214. An improved method for efficiently inputting data into the navigation system via the keypad 214 is described in detail below with reference to FIGS. 7A, 7B and 7C.

A clock 219 coupled to the navigation computer 204 displays the local time. In one embodiment, the clock 219 has a mode in which it displays the local time of a called party via the telephonic device 210. Note that in one embodiment, the time is displayed on the display screen 212. Alternatively, in another embodiment, the time is displayed on a display on the telephonic device 210. Alternatively, in yet another embodiment, the time is displayed on another display device coupled to the navigation computer 204.

In this example, a speech interface 218 is also coupled to the navigation computer 204. The speech interface 218 uses voice recognition techniques to accept spoken commands from users for controlling the navigation computer 204. The speech interface 218 is used in a preferred embodiment to allow users to control the computer 204 via spoken voice commands for promoting safe driving conditions while operating the navigation system 102.

The mapping database 208 is used to store local mapping data. As described in detail below, the local mapping database can be any type of mapping database supported by a specific implementation of the present invention. The mapping database need not match the mapping database 116 used by the navigation server 114.

The map display software 209 comprises methods for displaying, on display 212, routes reconstructed from the optimal routing information provided by the server 114.

The wireless transceiver 202 is used to send and receive data between the navigation computer 204 and the navigation server 114. In addition, the wireless transceiver 202 is used to provide standard and enhanced telephony services via the telephonic device 210. In one embodiment of the present invention, an enhanced telephony service that is provided is one that automatically displays the current time of day relative to a called party's location upon dialing out. This aspect of the present invention is described in detail below with reference to FIG. 11.

The GPS receiver 206 is used to track the position, speed and bearing of the mobile unit 104. As is well known, the GPS is a collection of 24 satellites owned by the US Government. Other similar systems can also be used in alternate embodiments of the present invention. One example of a similar system is the Russian GLONASS system.

In general, the GPS and other similar systems provide highly accurate positioning and navigational information.

Currently, the US GPS comprises 24 twenty-four NAVSTAR GPS satellites which orbit 12,000 miles above the earth and constantly transmit their individual positions as well as the current precise time-of-day. The current precise time-of-day is provided by one of four highly accurate on-board atomic clocks.

GPS receivers, such as the receiver 206, listen to the information received from at least three satellites to determine the precise location of the receiver, as well as velocity and bearing information (if in motion). The GPS receiver 206 determines its distance from the satellite by using the travel time of the radio message from the satellite 110 to the receiver 206. After calculating its relative position from at least three satellites 110, the current position is calculated using well known triangulation techniques.

Accordingly, when the GPS receiver 206 is present, the navigation computer 102 uses data from the GPS to track the current location of the mobile unit 104. The current location is overlaid on a map from the mapping database 208 and is displayed on the display screen 212.

In one embodiment of the present invention, the precise location that is calculated by the GPS receiver 206 is used to determine current time zone information. This information can be used for example to set a highly accurate compensated local time in the navigation computer 204. Details of this aspect of the present invention are subsequently described below with reference to FIGS. 8 and 9.

FIG. 3 is a block diagram depicting some of the functional components of the navigation system in accordance with an embodiment of the present invention. The navigation computer 204 is provided with a web server interface component 302. The web server interface component 302 is used to perform web browser-like functions for the navigation computer 204. As shown, the web server interface is coupled with the navigation server 114. This is generally accomplished through the use of the wireless transceiver 202.

Accordingly, the web server interface module 302 interprets data streams from the server for displaying display text and/or graphics on the display screen 214. Preferably, the data streams transmitted by the server 114 are in a standard format, such as HTML, a modified version of HTML or the like. In this fashion, generic web-browsing tools can be used to interface with the web navigation server 114 of the present invention.

The web server interface module 302 is also used to accept input 304 from the user and transmit such user input 304 to the server 114. For example, users may request a route to be calculated by the server 114 by inputting route start and stop designations.

Route data that is calculated by the server 114 is downloaded to the navigation computer 204 via the web server interface 302. The map reconstruction module 306 then processes the route data. In particular, the map reconstruction module interprets the route data and reconstructs, in the format required by the map display software 209, the optimal route calculated by the server 114, using the local mapping database 208. As indicated by block 308, the reconstructed mapping data is displayed, by the map display software 209, on the display screen 214.

FIG. 4 is a flowchart that depicts a process that can be used in an embodiment of the present invention. The process begins with step 404, where the navigation computer 204 establishes a connection with the server 114. Once a connection is established, the user inputs start and destination parameters for a requested route.

In step 408, the server connects with other databases, as necessary to obtain real-time information that is to be used

in calculating an optimal route for the user. For example, the server may connect with another server on the Internet 118 that provides current traffic or road conditions relevant to the proposed route. Alternatively, such information may reside in one or more resources directly controlled by the navigation server 114, such as the database 116, or the user profile 117.

In any case, the Internet 118 is a preferred computer network used in an embodiment of the present invention because of the wide availability of information offered by governmental, educational and commercial sources. Thus, depending on the specific implementation of the present invention, real-time data provided by the present invention can originate from the navigation server 114, or from other sources on the Internet 118.

Accordingly, the knowledge base used by the navigation server 114 can be local or widely distributed, depending on each specific implementation of the present invention. On one end of the spectrum, the navigation server 114 provides all of the real-time information for the mobile navigation system 102. On the other end of the spectrum, none of the real-time data is provided directly from navigation server 114, but from other resources available on the Internet 118. In a typical embodiment, the distribution of the knowledge base falls somewhere in-between these two extremes.

In step 408, the server 114 optionally reads or requests user preference data for calculating the route. For example, the user may want to avoid toll roads, dirt roads or major highways. The server 114 can request this information from the user in real-time. Alternatively, such information may be pre-stored from previous sessions and is accessible by the server 114, from the database 117. Many known methods can be used to obtain user specific information, such as the use of cookies and the like. Such methods would be apparent to persons skilled in the relevant art(s).

In step 412, the server calculates an optimal route based on the start and destination data from step 406, the real-time data from step 408, and the user information, if any, from step 410. Next, in step 414, the server 114 formats the routing data in accordance with a natural language specification. An example of a natural language specification that can be used to implement an embodiment of the present invention is described below with reference to FIG. 5.

Next, in step 416, the server downloads the calculated optimal route to the navigation computer 204. Typically, this data is compressed prior to downloading in step 416. Upon receipt of the compressed data, the client uses a decompression algorithm to expand the data to its original text format. The textual nature of the natural language specification of the present invention provides for highly compressible routing data to thereby reduce bandwidth requirements for the wireless connection.

In step 418, the client interprets the routing data, queries the mapping database 208, and reconstructs the optimal route in terms that are native to the mapping database 208 and/or the map display software 209. In step 420 the route is displayed, by the map display software 209, on the display screen 212, as indicated by block 308.

FIG. 5 is a block diagram describing a natural language format that can be used to specify routes in accordance with an embodiment of the present invention. A generic designation for the natural language description is depicted in block 502. This is followed by a specific example of a formatted calculated route as shown in block 508.

The natural language description 502 preferably consists of start and end route designations 504. These designations

are described using a natural language specification and generally include such information as street names and city names, etc. In addition, in a typical embodiment, the start/end route designation includes a start direction.

The start and end route designations are followed by a number of links **505a**, **505b** . . . **505n** (generally **505**). Each link **505** is described using a natural language description. This can include in any variables such as a street name, a distance, a turning orientation, a landmark designation, a turning distance from the landmark, etc. Many variations can be used in different embodiments of the present invention in accordance with desired features.

In a preferred embodiment, a minimal amount of information is used to describe each link to minimize bandwidth requirements. The route table **508** depicts a specific example of a calculated route that begins on Sea World Drive in San Diego Calif. and ends on South Rodeo Drive in Beverly Hills Calif.

As stated above, the natural language routing description **502** begins with the start/end route designations **504**. An example of a start/end route designation is shown in block **510**. These designations can be as simple as the name of the start and end streets as well as the city and state of such streets. In this example, the start/end route designation is defined as "Sea World Drive, San Diego Calif. to South Rodeo Drive, Beverly Hills Calif. The meaning of these terms is self-explanatory.

The first link **514** describes information about the next turn. In particular, the link **514** lists the name of the next road ("Interstate 8"), the orientation of the turn at Interstate 8 ("90 Deg.") and the distance to the turn at Interstate 8 ("1.4 miles"). Similarly, Link **515** lists the name of the next road ("Interstate 5"), the orientation of the turn ("0 Deg.") and the distance ("127.3 miles"). The next link **518** lists the name of the next road ("Santa Monica Highway 2"), the orientation of the turn ("45 Deg.") and the distance to the turn ("2.9 miles"). Finally, the last link **520** lists the next turn ("South Rodeo Drive"), the turning orientation ("180 Deg.") and the distance to the turn ("1 mile").

As described below, this information is processed by the navigation computer **204** to reconstruct and display the route **508** using the local mapping database **208**. As stated, the local mapping database **208** can be different from the mapping database **116** used by the server **114** to calculate the route. Specifically, the map reconstruction module **306** reads the natural language routing description **508** and reconstructs the route in step **418**.

A method that can be used by the map reconstruction module **306** to reconstruct the route (as shown in step **418** from FIG. 4) will now be described with reference to FIG. 6. The map reconstruction process **600** begins with step **602**. In step **602**, the process finds the starting point of the route. Typically, this starting point is listed in the first entry **504** in the natural language description **502**. It should be noted that there are many ways in which to specify a start location. For example, in one embodiment, the start location is specified in accordance with the current GPS location. In another embodiment, the start location is specified by specific user input. In yet another embodiment, preprogrammed user information, such as a home or work address is stored in either the navigation computer **204** or the user profile database **117**. In any case, various methods for specifying a start location that can be used in specific embodiments of the present invention would be apparent to persons skilled in the relevant art(s).

Accordingly, in step **602**, the start location is found within the local mapping database **208**. Specific methods for

searching the local mapping database **208** depend on the actual mapping database being used in each specific implementation of the present invention. Typically, standard map data accessing function calls are used in accordance with requirements of a predefined application-programming interface (API). Specific method steps for searching various types of mapping databases **208** would be apparent to persons skilled in the relevant art(s).

Once the starting point is found on the mapping database **208**, the process continues with step **604**. In step **604**, the next link is extracted from the natural language description **505**. As stated, this includes at least the street name of the next turn ("next turn street") and the type of the next turn ("turn type"). It should be noted the turn type could be specified in various ways. For example, the turn type could be specified in terms of absolute degrees, as shown in FIG. 5 or as directional indicators, such as N, NE, E, SE, S, SW, W and NW. Alternatively, the turn type could be specified as a left turn or a right turn, a left bear or a right bear, etc. Any method for describing turns can be used in alternative embodiments of the present invention.

Next, in step **606**, the current road in the mapping database **208** is followed in the indicated direction. The indicated direction is determined by the start/end route designations **504**, or from the last turn. Next, in step **608** the process determines if the last link **505n** has been processed. If so, the map is highlighted in accordance with the reconstructed routing information determined from the previous steps. Typically, the highlighted map is displayed on the display screen **212**.

If the last link **505n** has not been reached in step **608**, control passes to step **610**. In step **610** the current road in the mapping database **208** is searched for the next occurrence of a cross street. The goal is to determine the exact location (i.e. the latitude and longitude) of each maneuver. This is accomplished by finding the intersection of the two streets before and after a maneuver under consideration. In one embodiment, it is assumed that the street names and the city name of the streets have been extracted from the turn-by-turn text instructions provided by the server.

This task can be achieved by using standard map data accessing function calls. A node ID of the maneuver point (intersection) can thus be obtained. Once the maneuver point is identified, the road segment corresponding to the next cross street can be determined.

Next, in step **612**, the process adds the map information to the reconstructed route. Control next passes to step **614**. The objective is to construct a route data structure or "link list" which consists of all the shape points along the route. Given two nodes (i.e. maneuver points) and the name of the road between them, the process traces through the segments that connect the two nodes. From each segment, a series of shape points can be obtained. The result of step **612** is link list of shape points, which define part of the route.

Next, in step **614**, the process double checks if the found cross street matches the turn street. In a preferred embodiment, fuzzy logic is used to implement the street name comparison in step **614** to account for differences in spelling and for differences in street names such as "road" verses "drive", "street", or "circle" and abbreviations and the like. If an exact match is not found, heuristic techniques can be used to determine the best match. Typically, this involves additional searching in the current direction to determine if other candidates exist.

If in step **614**, a match between the cross street and the turn street is found, control passes to step **616**. In step **616**,

US 6,292,743 B1

11

the process makes the turn as indicated in the link information. Control next passes back to step 604, where the next link is read. The process represented by steps 604-616 continues until step 608 determines that the last link has been processed, as described above.

The outcome of this algorithm depicted by flowchart 600 is a link list of shape points, which define the optimal route downloaded from the server 114. A subset of the link list of shape points is the actual maneuver points. This reconstructed route data can then be used to display and route track a vehicle progression along the route. The navigational computer 204 can then issue guidance instructions to the user at appropriate times (e.g. when the automobile 104 approaches a turn).

An enhanced user-interface data-entry feature will now be described with reference to FIGS. 7A, 7B and 7C. This feature is preferably used in embodiments of the present invention that include the use of data entry fields similar to the type shown in FIG. 7C. This type of data entry field is hereinafter referred to as a "keypad data entry field." A keypad data entry field provides the capability for inputting alphanumeric characters with the use of a keypad device, rather than a keyboard device. Keypad data entry fields can be found, for example, in Microsoft's CE Auto PC operating system.

The keypad input device 214 used in one embodiment of the present invention consists of five keys that are arranged as shown in FIG. 7A. In this example, the central key 711 is used to perform an "Enter" function and is hereinafter referred to as the "enter-key 711." The four directional keys 705, 707, 709, and 703 are generally used to alter the position of a screen object, such as a cursor or the like. In addition, the directional keys are used to scroll data as described below.

FIG. 7C represents a single keypad data entry field shown at different points in time. In particular, in this example, the elapsed time increases as the reference numerals 712-720 increase. In this example, different character positions are highlighted (as indicated by darkened triangles) at each point in time 712-720. That is, the first character is highlighted at time 712, the second at time 714, the third at time 716, the fourth at time 718 and the fifth at time 720.

The highlighted character position indicates the active character position. When a particular character position is active, users can manipulate the data within that position by using the up and down arrow keys 703 and 707, respectively. Typically, pressing the up arrow key 703 scrolls data in the data in the active character position in a descending alphabetical order. Similarly, pressing the down arrow key 707 scrolls the data in the active character position in an ascending alphabetical order.

Further, users select which character position in the data entry field is active by manipulating the left 709 and right 705 arrow keys. The enter-key 711 is generally depressed to indicate that data should be entered and accepted by the program.

The enhanced user interface feature of the present invention anticipates the contents of data being entered by the user and fills-in the data entry field with the anticipated characters to the right of the active character position. In this fashion, if the anticipated data is correct, the user need not enter data into the remaining character positions, but instead, immediately presses the enter-key 711.

In addition, the method constantly determines a valid character set for each character position. Therefore, when user presses up arrow key or down arrow key for scrolling

12

characters, only valid characters appear in the keypad data entry field in accordance with the set of allowable entries. This feature of the present invention is especially useful in a mobile environment such as an automobile, where data entry is not only cumbersome, but can also be dangerous.

The enhanced user-interface feature of the present invention functions as follows. FIG. 7B represents a portion of a database comprising allowable cities that can be specified by a user, for example, when specifying the start and/or stop route designations in step 406. In this example, the cities are listed in alphabetical order, but any order can be used in alternate embodiments.

As shown by the data entry field at time 712, the user enters an "S" in the first character position by manipulating the up and down arrow keys (703 and 707, respectively). In response to this user input, all of the character positions to the right of the active character position are completed with anticipated data. In this example, the city "Sacramento" 704 is selected as the anticipated data entry item.

In this example, "Sacramento" 704 is selected from the table 702, because it is the first entry found in the table 704 that conforms to the entered data at the time 712. That is, "Sacramento" is the first city in the table 702 that begins with the letter "S".

It is important to note that in other embodiments, different criteria can be used to select a particular item from the set of conforming data items. In this example, the set of conforming data items is all items in the table that begin with the letter "S". Further, in this example, the criterion used for selecting a particular conforming data item is that it appears first in the list, alphabetically.

In another embodiments, different criteria can be used, such as frequency of use and most recent use. For example in one embodiment, a frequency of use counter is maintained for each data item in the list 702. Accordingly, a data item having the highest frequency of use is selected from the set of conforming data items. In another embodiment, a date counter is maintained for each item in the list 702. In this example, the most recently used data item is selected from the set of conforming data items. Any method can be used to select the anticipated data item from the set of conforming data items at each point in time during the data entry process. Such methods would be apparent to persons skilled in the relevant art(s).

Next, as indicated by the time 714, the user selects the letter "A" in the second character position. At this point, the set of conforming data items is all items in the list 702 beginning with the letters "SA". This includes the data items 704-710. Using the alphabetical criterion as described above, the data item "Sacramento" is selected as the anticipated data entry.

Next, as indicated by the time 716, the user selects the letter "N" in the third character position. This letter can be quickly selected by the user because the scrollable character set at each position is limited in accordance with the allowable entry list 702. In this example, if the allowable data entry list 702 represents the entire list, then the allowable characters in the third character position is limited by to the letters "C" and "N".

When the "N" is selected, the set of conforming data items is all items in the list 702 beginning with the letters "SAN", namely 706-710. Again, using the alphabetical criterion as described above the data item "San Diego" is selected as the anticipated data entry.

Next, as indicated by the time 718, the user selects a space in the fourth character position. At this point, the set of

US 6,292,743 B1

13

conforming data items remains the same. Therefore, the data item "San Diego" is selected as the anticipated data entry.

Next, as indicated by the time 720, the user selects the letter "F" in the fifth character position. At this point, the set of conforming data items is all items in the list 702 beginning with the letters "SAN F." The set of conforming data items that meets this criterion is "San Francisco" 78. Accordingly, "San Francisco" 708 is selected as the anticipated data entry.

As stated above, in one embodiment of the present invention, the precise location that is calculated by the GPS receiver 206 is used to determine the current time zone. This information can be used for example to set the clock 219 coupled to the navigation computer 204 to a highly accurate compensated local time, based on current position. This feature avoids the problem found in current systems where a local clock is not updated with a time zone is crossed.

FIG. 8A is a flowchart depicting a process that can be used to implement an enhanced feature for determining current time zone information in accordance with an embodiment of the present invention. In step 804 time zone division lines are input into the navigation computer system 204. One way to accomplish this is to digitize time zone division lines. In step 806 three sets of time zone division lines are stored in the computer system 204. Preferably, these lines are stored as three sets of polygons having an increasing level of accuracy, as indicated by step 806.

Accordingly, three sets of time zone division lines are stored, ranging in accuracy from course to medium to fine. The course time zone division lines are wider and not as accurate as the medium division lines, which in turn are wider and not as accurate as the fine division lines. As the level of accuracy increases, so does the number and complexity of the polygons that comprise the different sets of time zone lines. In other words, the course and medium time division lines are approximations that are used to quickly determine whether a current position is close to an actual time zone. If so, a more precise set of lines is used. The fine time zone division lines very accurately depict the shape and position of the actual time zone division lines. The fine set of lines is much more complex and requires more polygons than the less accurate course and medium sets of lines. This concept is illustrated in FIG. 8B.

In FIG. 8B, a portion of a course, medium and fine set of time zone lines are depicted. The actual time zone is coincident with the fine set of time zone lines that are represented by the line 826. In this example the fine set of division lines 826 exactly matches the width and shape of the actual time zone. The medium set of time zone division lines 824 represent a close approximation that encompasses the time zone line 826.

Note that the medium set of lines 824 can be represented with much fewer polygons than the fine set of lines 826. In this fashion, searches using the medium set of lines 824 for determining whether a current position is coincident with the time zone lines 824 can occur much faster than using the fine set of lines 826.

The course set of time zone division lines 822 represent a gross approximation of the time zone line 826. Note that the course set of lines 822 can be represented with fewer polygons than the medium set of lines 824. In this fashion, searches using the course set of lines 822 for determining whether a current position is coincident with the time zone lines 822 can occur much faster than using the medium set of lines 824. Accordingly, as shown below, searches are made first with the course set of lines 822, followed by the medium set of lines 824, followed by the fine set of lines 826.

14

Referring back now to FIG. 8A, in step 808, the process determines the current position from the GPS receiver 206 in terms of latitude and longitude. Next, in step 810, the process determines if the current position intersects with the course set of time division lines. It should be noted that comparing the position using the course set of time zone division lines is faster than using the medium set of time zone division lines. Similarly, the comparison using the medium set of time zone division lines is faster than using the fine set of time zone division lines. In this fashion, the medium and fine sets are used only when required (i.e. when the navigation system 102 gets closer to an actual time zone division line.)

When the navigation system 102 gets close to a time zone, the compare using the course approximation location information will indicate that an intersection between the current location and the course set of lines exist. This indicates that a higher resolution compare is required using a finer set of time zone division lines.

Accordingly, in step 810, a comparison is made between the current position and the course set of time zone division lines. In step 812, the process determines if the current position intersects with the time zone division lines in accordance with the comparison. If it does, the process determines if the most accurate set of division lines have been used in step 812. If so, control passes to step 818, where the new time zone is set. If not, the next finer set of division lines are used for another comparison, as indicated by steps 814 and 812.

If it is determined in step 812 that an intersection between the current position and the time zone lines do not exist, control passes back to step 808 and the process repeats. Note that an embodiment of the present invention may include a delay between steps 812 and 808. For example, it may be desirable to save CPU cycles by checking for a new time zone at specified intervals, rather than continuously.

FIG. 9 is a flowchart depicting a process that can be used to calibrate a real-time clock in the navigation computer 204. The process begins with step 904. In step 904 the process determines the current time in Greenwich Mean Time (GMT) from the GPS receiver 206. Next, in step 906, the process determines the current time zone information. This can be accomplished using the process 800 as described above.

Next, in step 908, the process converts the GMT to local time in accordance with the current time zone and daylight savings time and like. A database that is accessible to the navigation computer 204 is used for this purpose. In step 910 the process sets the local time of the navigation computer 204 in accordance with the time calculated in step 908. The process ends as indicated by step 912.

As stated above, the display screen 212 is used to display geographical maps from the mapping database 208. In addition, the current position of the automobile 102 is superimposed on the geographical map to indicate the current position and bearing. In this example, the display screen 212 is a liquid crystal display that conforms to the Auto PC platform specification maintained by Microsoft Corporation. In this example embodiment, the navigation system conforms to the Auto PC platform and thus 102 fits into a standard 1-DIN unit in the dash of the automobile 104. It is assumed that in accordance with this standard, the display screen 212 is on the order of 256 pixels wide by 64 pixels tall. A method for displaying a navigational mapping system on such a display will now be described with reference to FIG. 10.

EXHIBIT A

0018

US 6,292,743 B1

15

A “head-right” map display **1002** is shown in FIG. **10A**. In this example, the automobile **104** is represented by the triangle **1004**. In this example the automobile is heading from left to right. In the head-right display **1002**, the map is continuously rotated such that the direction of the vehicle **1004** always points to the right. This method is much preferred over the current method of displaying maps such that the vehicle always points up. Using a head-right display is preferred due to the fact that the display screen **212** is significantly wider than it is tall. In this fashion, by using a head right display, more look-ahead space of the route is provided.

Alternatively, a “head-left” map display **1006** as shown in FIG. **10B** can be used. This may be the preferred method for automobiles equipped with a steering wheel on the right side. In this example, the automobile **104** is represented by the triangle **1008** and is heading from right to left. In the head-left display **1006**, the map is continuously rotated such that the direction of the vehicle **1004** always points to the left. This method is much preferred over the current method of displaying maps such that the vehicle always points up.

In one embodiment of the present invention, a database is maintained that maps time zone information to telephone numbers. This database is used to provide an enhanced user-interface feature of the present invention. In particular, the database is used to display the current local time of a called party, when dialing out on the telephonic device **210**. The database used to implement this feature matches country codes, city codes, area codes, and local exchange information that comprise telephone numbers to time zone information.

FIG. **11** is a flowchart depicting a process that can be used to implement this feature of the present invention. In step **1104**, the telephone number input by the user is parsed to extract a country and city code, or an area code and three-digit exchange. Once this information is extracted, it is used in step **1106** to query a database that matches such information with time zone information. The time zone information is generally relative to universal time or GMT, and typically ranges from GMT -12 hours to GMT +12 hours. Once this information is retrieved from the database, the current time in GMT is obtained as indicated in step **1108**.

After the current GMT is obtained, it is adjusted in accordance with the time zone information as indicated in step **1110**. Finally, in step **1112**, the adjusted time is displayed to the user.

While various embodiments of the present invention have been described above, it should be understood that they have been presented by way of example only, and not limitation. Thus, the breadth and scope of the present invention should not be limited by any of the above-described exemplary embodiments, but should be defined only in accordance with the following claims and their equivalents.

What is claimed is:

1. A method for providing an optimal route using real-time information for a navigation system comprising a client and a server, said server coupled to a computer network, said method comprising the steps of:

- establishing a wireless connection between the client and the server;
- transmitting start and end route designations from the client to the server;
- accessing real-time information by the server;
- calculating the optimal route by the server, based on the real-time information and said start and end route designations;

16

formatting the optimal route into a non-proprietary, natural language description;

downloading said non-proprietary, natural language description to the client;

reconstructing the optimal route by the client using a local mapping database; and

displaying said optimal route on a display system coupled to the client.

2. The method of claim **1**, wherein said step of formatting includes the step of dividing the optimal route into one or more links, wherein each link includes at least a street name and a turning orientation.

3. The method of claim **2**, wherein said step of reconstructing includes the steps of:

- searching said local mapping database for a closest match of said street name and said turning orientation for each of said links; and

- building the optimal route by combining each of said closest matches from said searching step.

4. The method of claim **1**, wherein said accessing step comprises the step of accessing a traffic database comprising current traffic conditions; and

- querying said traffic database for determining current traffic conditions between locations defined by said start and end route designations.

5. The method of claim **1**, wherein said real-time information includes one or more from the set of:

- current traffic conditions;
- highway ramp configurations;
- current weather conditions;
- constriction information;
- road restrictions;
- detour information; and
- event traffic information.

6. The method of claim **1**, wherein said wireless connection is accomplished using a cellular network.

7. The method of claim **1**, wherein said transmitting step includes the step of entering into a keypad data entry field, said start and stop route designations including a name for one or more of:

- a city;
- a state;
- a country; and
- a street.

8. The method of claim **7**, wherein said step of entering comprises the steps of:

- comparing data entered into the keypad data entry field with a database of allowable entries;
- determining a set of conforming data items associated with said entered data;
- applying a criterion to said set of conforming data items to determine an anticipated data item; and
- displaying said anticipated data item in the data entry field.

9. The method of claim **8**, wherein said criterion defines a data item in said set of conforming data items that appears first alphabetically.

10. The method of claim **8**, wherein said criterion defines a data item in said set of conforming data items that is used most frequently.

11. The method of claim **8**, wherein said criterion defines a data item in said set of conforming data items that is used most recently.

EXHIBIT A

0019

17

12. The method of claim 1, wherein said downloading step comprises the step of compressing said natural language description.

13. The method of claim 1, wherein said calculating step further comprises the step of reading user-specific data in calculating the optimal route.

14. The method of claim 1, wherein said computer network is the Internet.

15. A mobile navigation system comprising:

a navigation computer;

a wireless transceiver coupled to said navigation computer for connecting with a navigation server, said navigation server for calculating optimal routes based on real-time information, said optimal routes being formatted using a non-proprietary, natural language description;

a mapping database coupled to said navigation computer for reconstructing said optimal route from said non-proprietary, natural language description; and

a display screen coupled to said navigation computer for displaying said optimal route using said mapping database.

16. The mobile navigation system of claim 15, further comprising:

a GPS receiver coupled to said navigation computer for monitoring position;

a telephonic device coupled to said wireless transceiver and said navigation computer for making and receiving telephone calls; and

a keypad coupled to said navigation computer for entering start and end route designations.

17. The mobile navigation system of claim 15, wherein said display screen is used to display the mapping database in a head right configuration.

18. The mobile navigation system of claim 15, wherein said display screen is used to display the mapping database in a head left configuration.

19. The mobile navigation system of claim 16, further including a clock coupled to said navigation computer, wherein said navigation computer is programmed to set said clock to an accurate local time in accordance with a time from said GPS receiver and a current time zone.

18

20. The mobile navigation system of claim 15, further including a clock coupled to said navigation computer, and said telephonic device, wherein said navigation computer is programmed to indicate from said clock a local time of a called party based on a dialed number.

21. A method for providing an optimal route using real-time information from a server of a navigation system, the navigation system also comprising a client and said server coupled to a computer network, said method comprising the steps of:

establishing a wireless connection with the client;

receiving at the server start and end route designations from the client;

calculating at the server the optimal route based on real-time information at the server and said start and end route designations;

formatting at the server the optimal route into a non-proprietary, natural language description;

downloading from the server said non-proprietary, natural language description to the client so that the client can reconstruct the optimal route using a local mapping database and display said optimal route on a display system coupled to the client.

22. A method for providing an optimal route using real-time information at client of a navigation system, the navigation system also comprising a client and said server coupled to a computer network, said method comprising the steps of:

establishing a wireless connection with the server;

transmitting start and end route designations from the client to the server;

receiving from the server an optimal route formatted in a non-proprietary, natural language description and calculated based on real-time information and said start and end route designations;

reconstructing the optimal route using a local mapping database; and

displaying said optimal route on a display system coupled to the client.

* * * * *