

IN THE UNITED STATES DISTRICT COURT  
FOR THE EASTERN DISTRICT OF TEXAS  
MARSHALL DIVISION

SENECA IP LICENSING LLC	)	
	)	
Plaintiff,	)	
	)	Civil Action No. 2:17-cv-686
v.	)	
	)	<b>JURY TRIAL DEMANDED</b>
KONICA MINOLTA BUSINESS	)	
SOLUTIONS U.S.A., INC.	)	
	)	
Defendant.	)	
_____	)	

**COMPLAINT**

For its Complaint, Plaintiff Seneca IP Licensing LLC ("Seneca"), by and through the undersigned counsel, alleges as follows:

**THE PARTIES**

1. Seneca is a Texas company with a place of business located at 5068 W. Plano Parkway, Suite 300, Plano, Texas 75093.
2. Defendant Konica Minolta Business Solutions U.S.A., Inc. is a New York corporation with, upon information and belief, a place of business located at 3800 Paluxy Drive, Suite 410, Tyler, Texas 75703.

**JURISDICTION AND VENUE**

3. This action arises under the Patent Act, 35 U.S.C. § 1 *et seq.*
4. Subject matter jurisdiction is proper in this Court under 28 U.S.C. §§ 1331 and 1338.
5. Upon information and belief, Defendant conducts substantial business in this forum, directly or through intermediaries, including: (i) at least a portion of the infringements alleged herein; and (ii) regularly doing or soliciting business, engaging in other persistent courses

of conduct and/or deriving substantial revenue from goods and services provided to individuals in this district.

6. Venue is proper in this district pursuant to § 1400(b).

**THE PATENT-IN-SUIT**

7. On January 5, 1999, United States Patent No. 7,441,699 (the "'699 patent"), entitled "Output Terminal, Data Output System, and Data Output Method," was duly and lawfully issued by the U.S. Patent and Trademark Office. A true and correct copy of the '699 patent is attached hereto as Exhibit A.

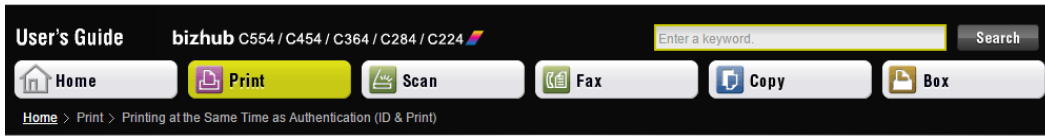
8. Seneca is the assignee and owner of the right, title and interest in and to the '699 patent, including the right to assert all causes of action arising under said patent and the right to any remedies for infringement of it.

**COUNT I – INFRINGEMENT OF U.S. PATENT NO. 7,441,699**

9. Seneca repeats and realleges the allegations of paragraphs 1 through 8 as if fully set forth herein.

10. Without license or authorization and in violation of 35 U.S.C. § 271(a), Defendant has infringed and continue to infringe the '699 patent by making, using, importing, offering for sale, and/or selling image information reading apparatuses, including, but not limited to, bizhub C554e, C454e, C364e, C284e, C224e with an Authentication Unit (collectively, "Accused Instrumentality").

11. More specifically, the Accused Instrumentality is an electronic data outputting method of an output terminal which transmits electronic data to another output terminal.



**ID & Print**

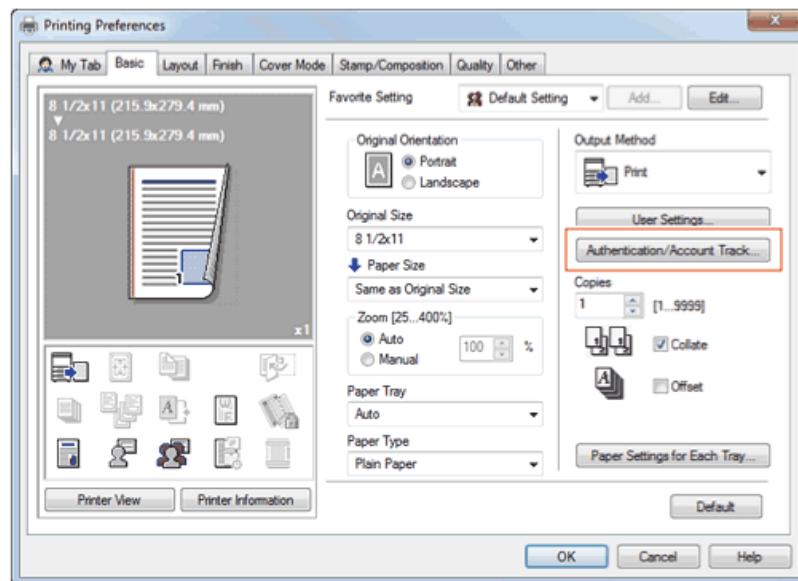
The ID & Print function saves print data in a box on this machine in an environment where user authentication is employed. Because the data is not printed within a short time period, this function prevents printed materials from being missing or left unattended.

Since you need to be authenticated in this machine to print the data saved in the box, this function is suitable for safely printing highly confidential documents. When you are successfully authenticated, the print data of the login user is automatically printed. This enhances security as well as ensures smooth operation.



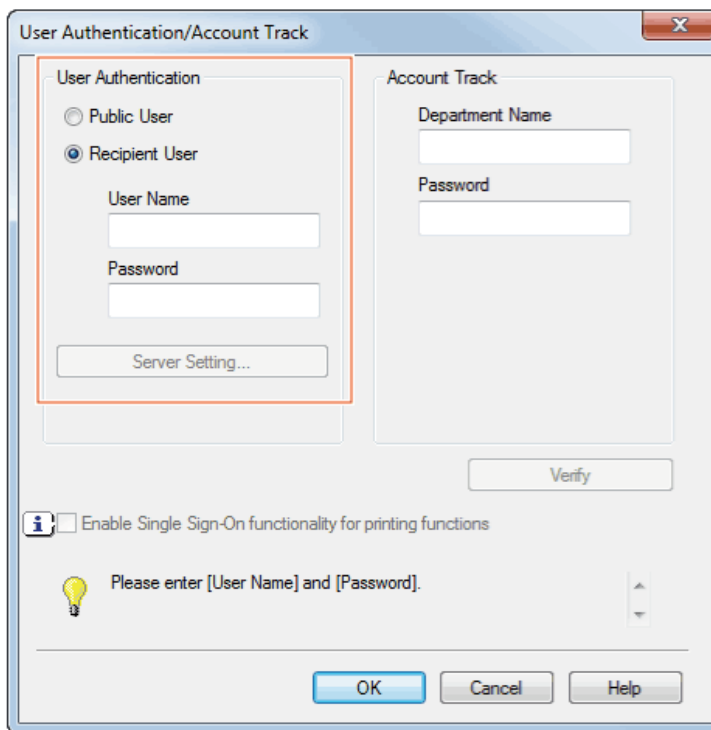
<http://manuals.konicaminolta.eu/bizhub-C554-C454-C364-C284-C224/EN/contents/id01-0131.html>. The output terminal of the Accused Instrumentality includes a communication unit which receives a specific code for specifying the electronic data (e.g., User Authentication) and a destination of the electronic data (e.g., printer).

**1. In the [Basic] tab, click [Authentication/Account Track...].**

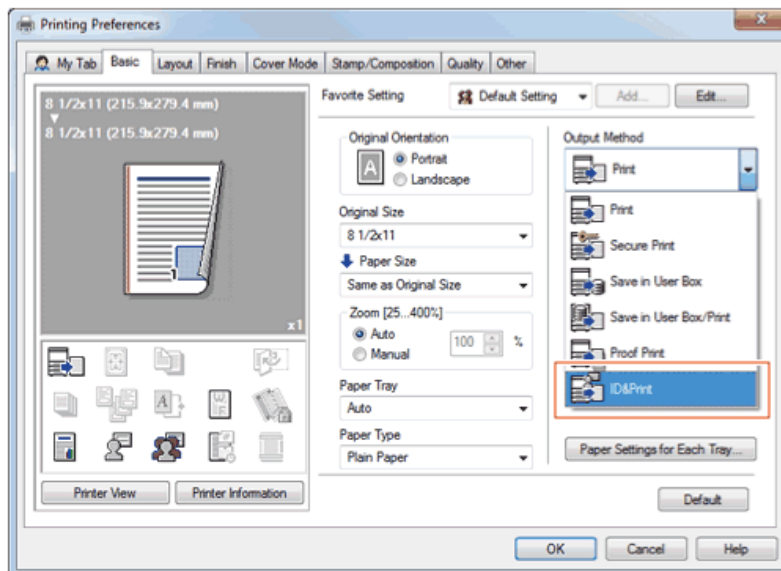


**2. Enter the authentication information, and click [OK].**

➔ For details, refer to [Here](#).



**3. In [Output Method], select [ID&Print].**



*Id.* The output terminal of the Accused Instrumentality includes a storage device.

Memory Capacity	Std.	2 GB
	Max.	4 GB
HDD		250 GB

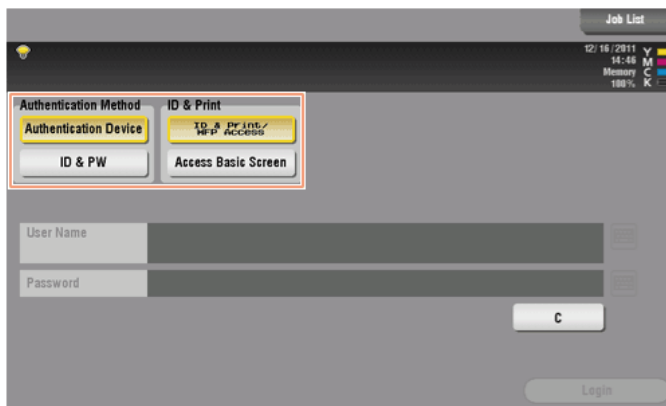
[https://www.biz.konicaminolta.com/colour/c554\\_c454\\_c364\\_c284\\_c224/spec.html](https://www.biz.konicaminolta.com/colour/c554_c454_c364_c284_c224/spec.html). The output terminal of the Accused Instrumentality includes an antenna which reads an identification code from an IC chip storing therein identification codes corresponding to specific codes on a one-by-one basis (e.g., the Authentication Unit reads the code stored on the User IC card which identifies that user based on the information sent to the output terminal; the identification code corresponds to the specific code which refers to the User information and authentication data).

#### Operations on this machine (when an Authentication Unit is used)

When an **Authentication Unit (biometric type)** or **Authentication Unit (IC card type)** is used, you can execute printing just by touching the authentication unit with your finger or IC card.

- ✓ You may be required to enter the user name and password before touching the unit with your finger or IC card due to the authentication settings. Tap the keyboard icon in the [User Name] or [Password] field, and enter the user name or password.

#### 1. Check that [Authentication Device] is selected in [Authentication Method].



#### 2. Check that [ID & Print/MFP Access] is selected in [ID & Print], and touch the **Authentication Unit** with your finger or IC card.

- ➔ When you select [Access Basic Screen] in [ID & Print], you can log in without starting printing.
- ➔ You can change the default value for [ID & Print] (Default: [Print & Access Basic Screen]) if necessary. For details, refer to [Here](#).

When you are successfully authenticated, all data items saved in the ID & Print User Box are printed.

<http://manuals.konicaminolta.eu/bizhub-C554-C454-C364-C284-C224/EN/contents/id01-0131.html>. The output terminal of the Accused Instrumentality includes an output unit which outputs the electronic data (e.g., prints).

**2. Check that [ID & Print/MFP Access] is selected in [ID & Print], and touch the Authentication Unit with your finger or IC card.**

- ➡ When you select [Access Basic Screen] in [ID & Print], you can log in without starting printing.
- ➡ You can change the default value for [ID & Print] (Default: [Print & Access Basic Screen]) if necessary. For details, refer to [Here](#).

When you are successfully authenticated, all data items saved in the ID & Print User Box are printed.

<http://manuals.konicaminolta.eu/bizhub-C554-C454-C364-C284-C224/EN/contents/id01-0131.html#p95>.

**2. Enter the authentication information, and click [OK].**

- ➡ For details, refer to [Here](#).

User Authentication/Account Track

Public User  
 Recipient User

User Name  
[Input Field]

Password  
[Input Field]

Server Setting...

Account Track

Department Name  
[Input Field]

Password  
[Input Field]

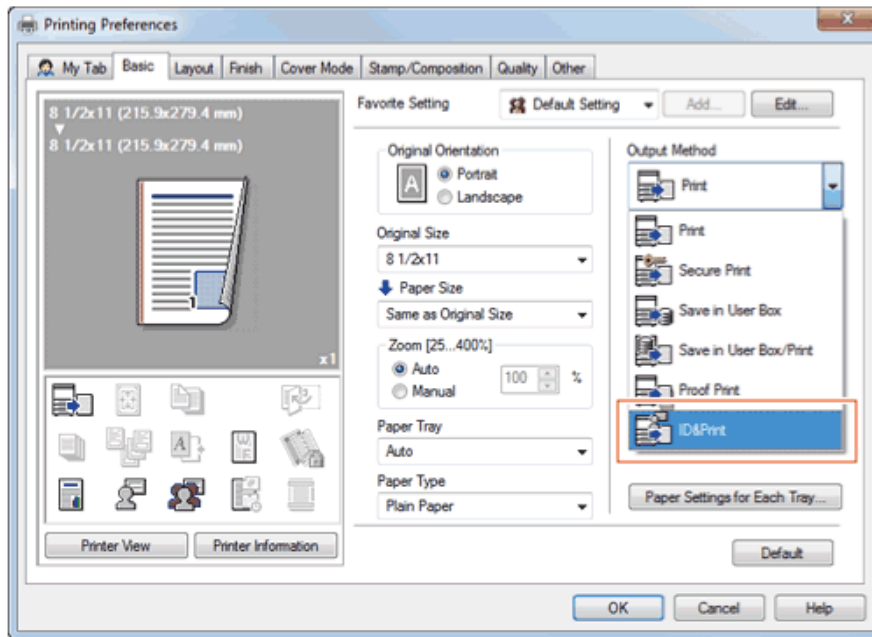
Verify

Enable Single Sign-On functionality for printing functions

Please enter [User Name] and [Password].

OK Cancel Help

**3.** In [Output Method], select [ID&Print].



**4.** Execute printing.

The data is saved in the ID & Print User Box. Continue to "Operations on this machine".

*Id.* When a user sends information to be printed, the information and authentication information is stored on the storage device. (e.g., "The ID & Print function saves print data in a box on this machine in an environment where user authentication is employed.")

**ID & Print**

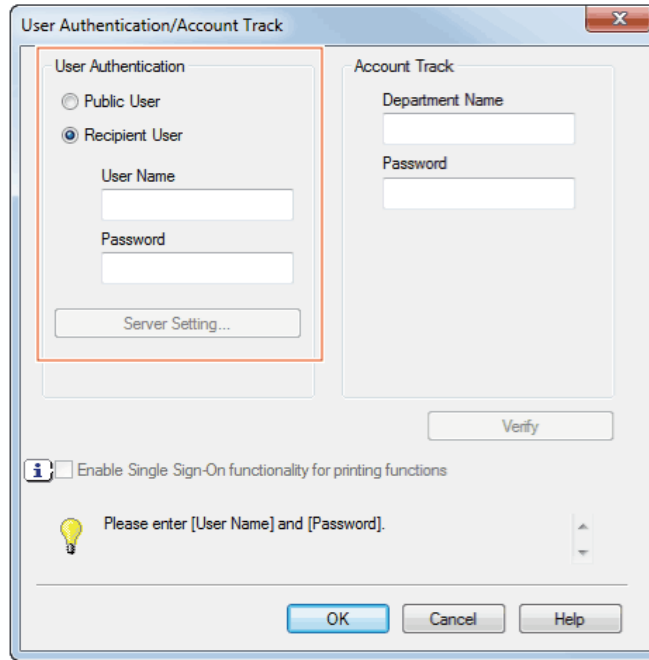
The ID & Print function saves print data in a box on this machine in an environment where user authentication is employed. Because the data is not printed within a short time period, this function prevents printed materials from being missing or left unattended.

Since you need to be authenticated in this machine to print the data saved in the box, this function is suitable for safely printing highly confidential documents. When you are successfully authenticated, the print data of the login user is automatically printed. This enhances security as well as ensures smooth operation.



**2. Enter the authentication information, and click [OK].**

➔ For details, refer to [Here](#).



<http://manuals.konicaminolta.eu/bizhub-C554-C454-C364-C284-C224/EN/contents/id01-0131.html>. When a user swipes his authentication card over the Authentication Unit, the antenna reads the identification code stored within. The card must be within a predetermined range to be authenticated (e.g., the excitation radius of the reader).

**Optimal user authentication system for any environment**

A security system can be created according to scale and needs with a host of user authentication functions, including MFP authentication, server authentication, IC card authentication and biometric authentication, which can connect to the already operating user authentication system as well as support small individual authentication security measures.



[https://www.biz.konicaminolta.com/colour/c554e\\_c454e\\_c364e\\_c284e\\_c224e/index.html](https://www.biz.konicaminolta.com/colour/c554e_c454e_c364e_c284e_c224e/index.html).

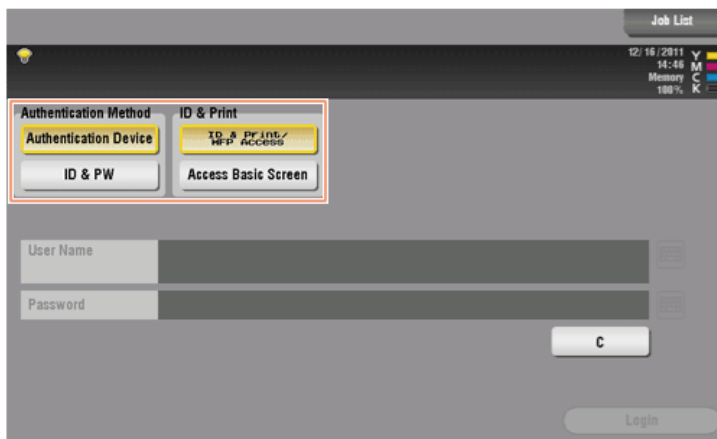


**Operations on this machine (when an Authentication Unit is used)**

When an **Authentication Unit (biometric type)** or **Authentication Unit (IC card type)** is used, you can execute printing just by touching the authentication unit with your finger or IC card.

- ✓ You may be required to enter the user name and password before touching the unit with your finger or IC card due to the authentication settings. Tap the keyboard icon in the [User Name] or [Password] field, and enter the user name or password.

**1. Check that [Authentication Device] is selected in [Authentication Method].**



**2. Check that [ID & Print/MFP Access] is selected in [ID & Print], and touch the Authentication Unit with your finger or IC card.**

- ➡ When you select [Access Basic Screen] in [ID & Print], you can log in without starting printing.
- ➡ You can change the default value for [ID & Print] (Default: [Print & Access Basic Screen]) if necessary. For details, refer to [Here](#).

When you are successfully authenticated, all data items saved in the ID & Print User Box are printed.

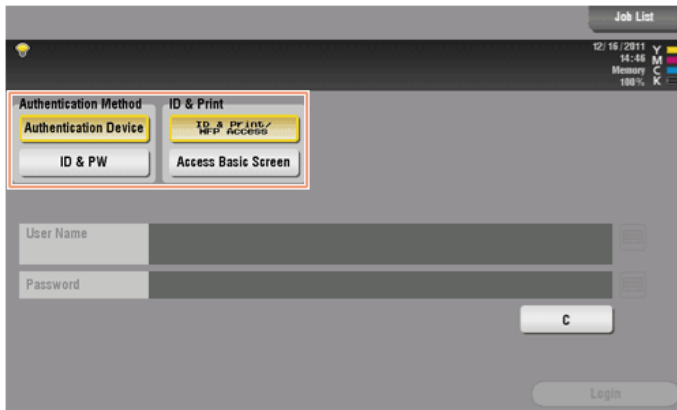
<http://manuals.konicaminolta.eu/bizhub-C554-C454-C364-C284-C224/EN/contents/id01-0131.html#p95>. When the IC Card is within the predetermined range and the identification code stored on the IC Card and read by the IC Card reader matches the Identification Code stored on the storage device, the output unit outputs the stored electronic data (e.g., sends it to a printing unit).

**Operations on this machine (when an Authentication Unit is used)**

When an Authentication Unit (biometric type) or Authentication Unit (IC card type) is used, you can execute printing just by touching the authentication unit with your finger or IC card.

- ✓ You may be required to enter the user name and password before touching the unit with your finger or IC card due to the authentication settings. Tap the keyboard icon in the [User Name] or [Password] field, and enter the user name or password.

**1. Check that [Authentication Device] is selected in [Authentication Method].**



**2. Check that [ID & Print/MFP Access] is selected in [ID & Print], and touch the Authentication Unit with your finger or IC card.**

- ➔ When you select [Access Basic Screen] in [ID & Print], you can log in without starting printing.
- ➔ You can change the default value for [ID & Print] (Default: [Print & Access Basic Screen]) if necessary. For details, refer to [Here](#).

When you are successfully authenticated, all data items saved in the ID & Print User Box are printed.

<http://manuals.konicaminolta.eu/bizhub-C554-C454-C364-C284-C224/EN/contents/id01-0131.html#p95>.

12. Seneca is entitled to recover from Defendant the damages sustained by Seneca as result of Defendant's infringement of the '699 patent in an amount subject to proof at trial, which, by law, cannot be less than a reasonable royalty, together with interest and costs as fixed by this Court under 35 U.S.C. § 284.

**JURY DEMAND**

Seneca hereby demands a trial by jury on all issues so triable.

**PRAYER FOR RELIEF**

WHEREFORE, Seneca requests that this Court enter judgment against Defendant as

follows:

- A. An adjudication that Defendant has infringed the '699 patent;
- B. An award of damages to be paid by Defendant adequate to compensate Seneca for Defendant's past infringement of the '699 patent and any continuing or future infringement through the date such judgment is entered, including interest, costs, expenses and an accounting of all infringing acts including, but not limited to, those acts not presented at trial;
- C. A declaration that this case is exceptional under 35 U.S.C. § 285, and an award of Seneca's reasonable attorneys' fees; and
- D. An award to Seneca of such further relief at law or in equity as the Court deems just and proper.

Dated: October 6, 2017

Respectfully submitted,

/s/ Richard C. Weinblatt

Stamatios Stamoulis DE SB #4606  
Richard C. Weinblatt DE SB #5080 – Lead Counsel  
Stamoulis & Weinblatt LLC  
Two Fox Point Centre  
6 Denny Road, Suite 307  
Wilmington, DE 19809  
Telephone: (302) 999-1540  
Facsimile: (302) 762-1688  
stamoulis@swdelaw.com  
weinblatt@swdelaw.com

*Attorneys for Plaintiff  
Seneca IP Licensing LLC*