

**IN THE UNITED STATES DISTRICT COURT  
FOR THE EASTERN DISTRICT OF TEXAS  
MARSHALL DIVISION**

**DALE PROGRESS LTD.,**

**Plaintiff,**

**v.**

**MERCEDES-BENZ USA LLC,**

**Defendant.**

**CIVIL ACTION NO. 2:18-cv-472**

**JURY TRIAL DEMANDED**

---

**PLAINTIFF’S SECOND AMENDED COMPLAINT**

Plaintiff Dale Progress Ltd. (“Plaintiff”), by and through its undersigned counsel, files this Second Amended Complaint against Defendant Mercedes-Benz USA LLC (“Defendant”) as follows:

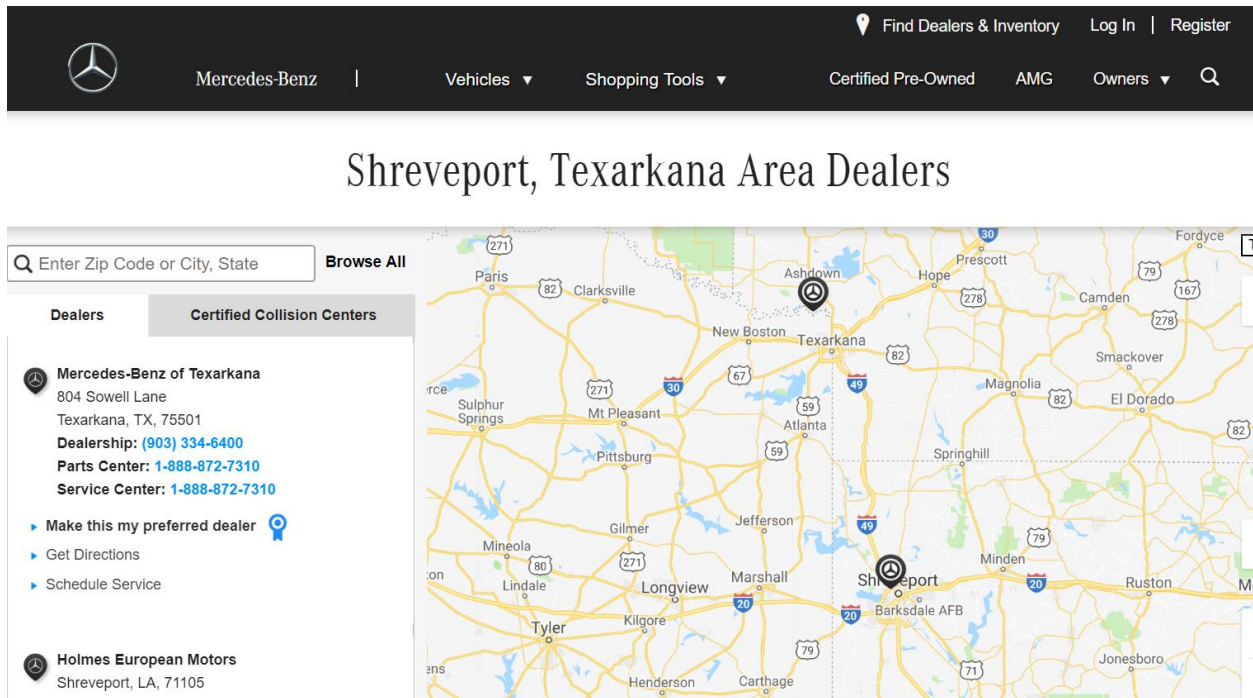
**NATURE OF THE ACTION**

1. This is an action for violation of 35 U.S.C. §§ 271(a) and 35 U.S.C. §§ 271(b). This is a patent infringement action to stop Defendant’s infringement of United States Patent No. 9,686,504 (“the ‘504 patent”) entitled “Remote Resource Access Interface Apparatus” and the United States Patent No. 8,320,461 (“the ‘461 patent”) entitled “Remote Resource Access Interface Apparatus”. A true and correct copy of the ‘504 patent is attached hereto as Exhibit A. A true and correct copy of the ‘461 patent is attached hereto as Exhibit B. Plaintiff is the owner by assignment of the ‘504 and ‘461 patents. Plaintiff seeks monetary damages and injunctive relief.

**PARTIES**

2. Plaintiff is a limited liability company having a principal place of business located at #204(#-81), 83, Gasan digital 1-ro, Gasan-Dong Geumcheon-gu, Seoul, 08589, Republic of Korea.

3. Upon information and belief, Defendant is a limited liability company organized and existing under the laws of the State of Delaware with a principal place of business located at 804 Sowell Lane Texarkana, Texas 75501. Defendant can be served with process by serving C T Corporation System, 1999 Bryan St. STE 900 Dallas, Texas 75201.



Source: <https://www.mbusa.com/mercedes/dealers/locator/>, (screenshot taken January 3, 2019)

## **JURISDICTION AND VENUE**

4. This action arises under the Patent Laws of the United States, 35 U.S.C. § 1 *et seq.*, including 35 U.S.C. §§ 271, 281, 283, 284, and 285.

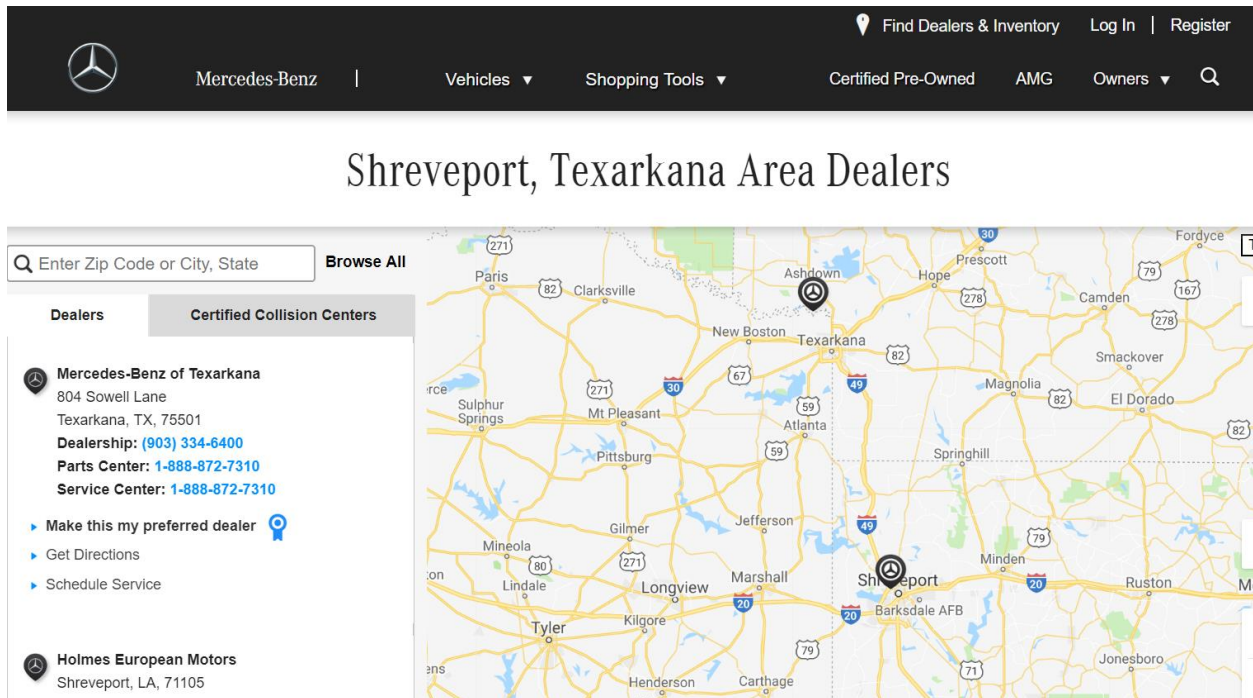
5. This Court has subject matter jurisdiction over this case for patent infringement under 28 U.S.C. §§ 1331 and 1338(a).

6. The Court has personal jurisdiction over Defendant because: Defendant is present within or has minimum contacts within the State of Texas and the Eastern District of Texas; Defendant has purposefully availed itself of the privileges of conducting business in the State of Texas and in the Eastern District of Texas; Defendant has sought protection and benefit from the

laws of the State of Texas; Defendant regularly conducts business within the State of Texas and within the Eastern District of Texas; and Plaintiff's cause of action arises directly from Defendant's business contacts and other activities in the State of Texas and in the Eastern District of Texas.

7. More specifically, Defendant, directly and/or through intermediaries, ships, distributes, uses, offers for sale, sells, and/or advertises products and services in the United States, the State of Texas, and the Eastern District of Texas including but not limited to the Accused Instrumentalities as detailed below. Upon information and belief, Defendant has committed patent infringement in the State of Texas and in the Eastern District of Texas. Defendant solicits and has solicited customers in the State of Texas and in the Eastern District of Texas. Defendant has paying customers who are residents of the State of Texas and the Eastern District of Texas and who each use and have used the Defendant's products and services in the State of Texas and in the Eastern District of Texas.

8. Venue is proper in the Eastern District of Texas pursuant to 28 U.S.C. §§ 1400(b). On information and belief, Defendant is incorporated in this district, or has a regular and established business presence in this district with a brick and mortar location at 804 Sowell Lane Texarkana, Texas 75501 and has transacted business in this district, and has directly and/or indirectly committed acts of patent infringement in this district.



Source: <https://www.mbusa.com/mercedes/dealers/locator/>, (screenshot taken January 3, 2019)

### **COUNT I – PATENT INFRINGEMENT**

9. Plaintiff refers to and incorporates herein the allegations of Paragraphs 1-8 above.

10. The ‘504 patent was duly and legally issued by the United States Patent and Trademark Office on June 20, 2017 after full and fair examination. Plaintiff is the owner by assignment of the ‘504 patent and possesses all rights of recovery under the ‘504 patent, including the exclusive right to sue for infringement and recover past damages and obtain injunctive relief.

11. Defendant owns, uses, operates, advertises, controls, sells, and otherwise provides apparatus, systems and methods that infringe the ‘504 patent. Claim 2 of the ‘504 patent provides, among other things, “a remote resource access interface apparatus comprising: a touch input detection unit configured to detect touch input on a display screen and to generate touch position information on a display screen; a communication unit configured to receive supportable key information from a compatible portable device, the communication unit further configured to transmit input key information to the portable device and to receive video information from the

portable device; a video output unit configured to display adjusted video information in the form of a visual image, the video output unit having a display screen having a screen specification different from a screen specification of the portable device, wherein the screen specification includes screen resolution information regarding the screen resolutions supported by the portable device; and a key advisor unit configured to output the supportable key information to the video output unit wherein the key advisor unit is configured to receive the touch position information through the touch input detection unit, and wherein the adjusted video information is video data adjusted to screen resolution supported by the video output unit on the basis of the screen resolution information supported by the portable device, and the touch position information is mapped to one of key values indicated by the supportable key information of the portable device such that the touch position information matches key values of the portable device.”

12. Defendant has been and is now infringing the ‘504 Patent in the State of Texas, in this judicial district, and elsewhere in the United States, by, among other things, directly or through intermediaries, making, using, importing, testing, providing, supplying, distributing, selling, and/or offering for sale apparatus and methods (including, without limitation, the Defendant’s products including Apple CarPlay functionality of the A-Class, CLA Class, CLS Class, GLA Class, GLE Class, E-Class, GLS Class, and SL Class identified herein as the “Accused Instrumentalities”) that provide a remote resource access interface device, covered by at least claims 1, 2, 3, 4, 5, 6, 7, 8, and 9 of the ‘504 Patent to the injury of Dale Progress Ltd. Defendant is directly infringing, literally infringing, and/or infringing the ‘504 Patent under the doctrine of equivalents. Defendant is thus liable for infringement of the ‘504 Patent pursuant to 35 U.S.C. § 271.

13. Defendant has induced and continues to induce infringement of the '504 Patent by intending that others use, offer for sale, or sell in the United States, products and/or methods covered by one or more claims of the '504 Patent, including, but not limited to, a remote resource access interface apparatus. Defendant provides these products to others, such as customers, resellers and end-use consumers who, in turn, use, offer for sale, or sell in the United States these a remote resource access interface apparatus that infringe one or more claims of the '504 Patent.

14. Defendant indirectly infringes the '504 Patent by inducing infringement by others, such as resellers, customers and end-use consumers, in accordance with 35 U.S.C. § 271(b) in this District and elsewhere in the United States. Direct infringement is a result of the activities performed by the resellers, customers and end-use consumers of a remote resource access interface apparatus.

15. Defendant received notice of the '504 Patent at least as of the date this lawsuit was filed.

16. Defendant affirmative acts of providing and/or selling the a remote resource access interface apparatus, including manufacturing and distributing, and providing instructions for using the a remote resource access interface apparatus in their normal and customary way to infringe one or more claims of the '504 Patent. Defendant performs the acts that constitute induced infringement, and induce actual infringement, with the knowledge of the '504 Patent and with the knowledge or willful blindness that the induced acts constitute infringement.

17. Defendant specifically intends for others, such as resellers, customers and end-use consumers, to directly infringe one or more claims of the '504 Patent, or, alternatively, has been willfully blind to the possibility that its inducing acts would cause infringement. By way of example, and not as limitation, Defendant induces such infringement by its affirmative action by,

among other things: (a) providing advertising on the benefits of using the Accused Instrumentalities' functionality; (b) providing information regarding how to use the Accused Instrumentalities' functionality; (c) providing instruction on how to use the Accused Instrumentalities' functionality; and (d) providing hardware and/or software components required to infringe the claims of the '504 Patent.

18. Accordingly, a reasonable inference is that Defendant specifically intends for others, such as resellers, customers and end-use consumers, to directly infringe one or more claims of the '504 Patent in the United States because Defendant has knowledge of the '504 Patent at least as of the date this lawsuit was filed and Defendant actually induces others, such as resellers, customers and end-use consumers, to directly infringe the '504 Patent by using, selling, and/or distributing, within the United States, a remote resource access interface apparatus.

19. As a result of Defendant acts of infringement, Plaintiff has suffered and will continue to suffer damages in an amount to be proved at trial.

20. Claim 2 of the '504 patent, claims:

*A remote resource access interface apparatus comprising:*



# Apple CarPlay

## The ultimate copilot.

Available on select cars, CarPlay is a smarter, safer way to use your iPhone in the car. CarPlay takes the things you want to do with your iPhone while driving and puts them right on your car's built-in display. You can get directions, make calls, send and receive messages, and listen to music, all in a way that allows you to stay focused on the road. Just connect your iPhone and go.

**SOURCE:** <https://www.apple.com/ios/carplay/>

### CarPlay

---



Mercedes-Benz

2016 - 2018 A-Class  
2016 - 2018 B-Class  
2016 - 2018 CLA-Class  
2016 - 2018 CLS-Class  
2016 - 2018 E-Class Cabriolet  
2016 - 2018 E-Class Coupe  
2016 - 2018 GLA-Class  
2016 - 2018 GLE-Class  
2017 - 2018 E-Class  
2017 - 2018 GLS-Class  
2017 - 2018 SL-Class

**Source:** <https://www.apple.com/ios/carplay/available-models/> (last accessed January 3, 2019)



2018 Mercedes-Benz E-Class - Overview ...  
cargurus.com



800 × 600

2018 Mercedes-Benz GLE GLE 350 SUV ...  
fjmercedes.com



Mercedes-Benz CLA-Class - Wikipedia  
[en.wikipedia.org](https://en.wikipedia.org)



Mercedes A-Class ...  
[autoweek.com](https://autoweek.com)



2018 Mercedes-Benz CLS-Class: New ...  
[autotrader.com](https://www.autotrader.com)



2018 Mercedes-Benz E-class Cabriolet ...  
[caranddriver.com](https://www.caranddriver.com)



Mercedes-Benz GLA-Class Expert Reviews ...  
cars.com



2018 Mercedes-Benz GLS-Class - Pictures ...  
cargurus.com



2017 Mercedes-Benz SL-class First Drive ...  
caranddriver.com

*a touch input detection unit configured to detect touch input on a display screen and to generate touch position information on a display screen;*

Defendant provides a touch input detection unit configured to detect touch input on a display screen and to generate touch position information on a display screen;

The '504 patent specification clearly states that a touch input detection unit detects a touch input on the display screen and generates position information on the display screen in association of the current image.

The touch input detection unit detects a touch input on the display screen and generates position information on the display screen in association of the current image. The touch input detection unit transmits the position information associated with the current image to the portable device. The touch input detection unit is implemented in the form of a touch-sensitive touchscreen covering the display screen of the video output unit. The touch input detection unit may further include a processor for converting a pressure voltage sensed on the display screen to the position information. *See* '504 patent Col. 4 *l.* 42-47.

## Touchscreen

Users can interact with a CarPlay app by performing gestures on the car's built-in touchscreen display. CarPlay supports both low-fidelity and high-fidelity touchscreen displays. High-fidelity screens have lower finger-tracking latency than low-fidelity screens, and therefore support more gestures. Depending on the display, CarPlay apps can respond single-finger gestures, as follows.

Gesture	Usage	Low-fidelity screen	High-fidelity screen
Tap	Activates a control or selects an item.	●	●
Double-tap	Zooms in and centers content.	●	●
Touch and hold	Activates a control for a period of time. For example, touching and holding the Next Track button in the Music app fast-forwards the currently playing track.	●	●
Flick	Scrolls or pans quickly.		●
Drag	Moves an element from side-to-side or drags an		●

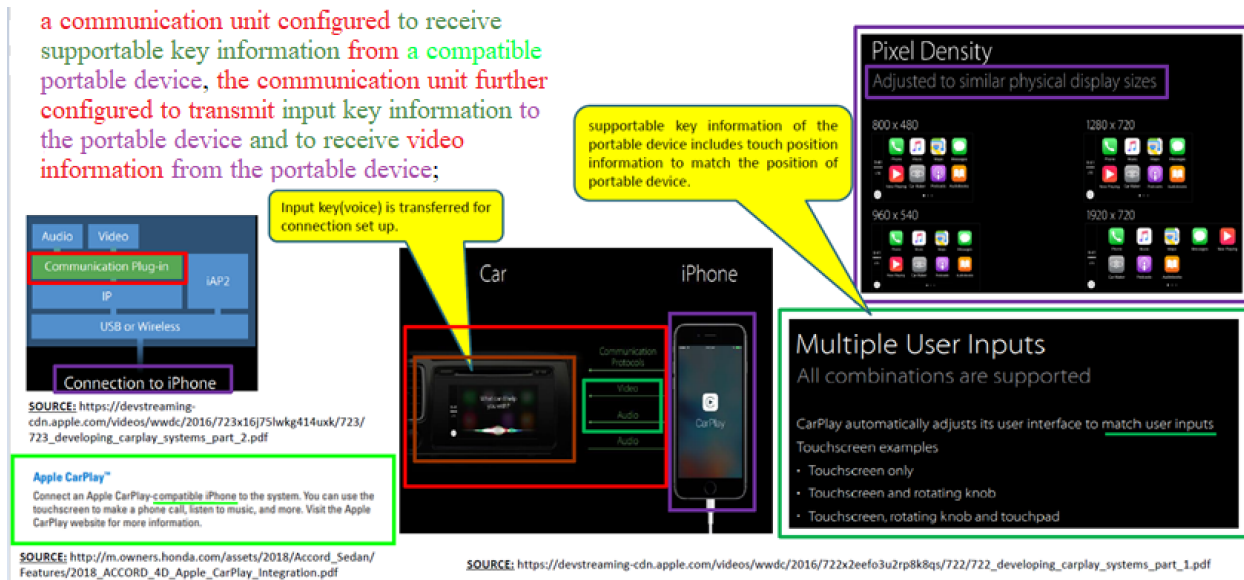
**SOURCE:** <https://developer.apple.com/design/human-interface-guidelines/carplay/interaction/touchscreen/>

*a communication unit configured to receive supportable key information from a compatible portable device, the communication unit further configured to transmit input key information to the portable device and to receive video information from the portable device;*

Defendant provides a communication unit configured to receive supportable key information from a compatible portable device, the communication unit further configured to transmit input key information to the portable device and to receive video information from the portable device;

The specification discloses sufficient structure for one of ordinary skilled in the art to build or program a communication unit. The specification clearly states that a communication unit utilizes wireless communication interfaces to perform the claim limitation functions.

The communication unit can be provided with at least one of wireless communication interfaces specified by Bluetooth, wireless fidelity (wi-fi), ZigBee, wireless broadband (WiBro) protocols for communicating with the portable device. The communication unit also can be connected to the portable device through a communication wire so as to exchange data with the portable device in series or in parallel. *See* '504 patent Col. 4 *l.* 8-15.

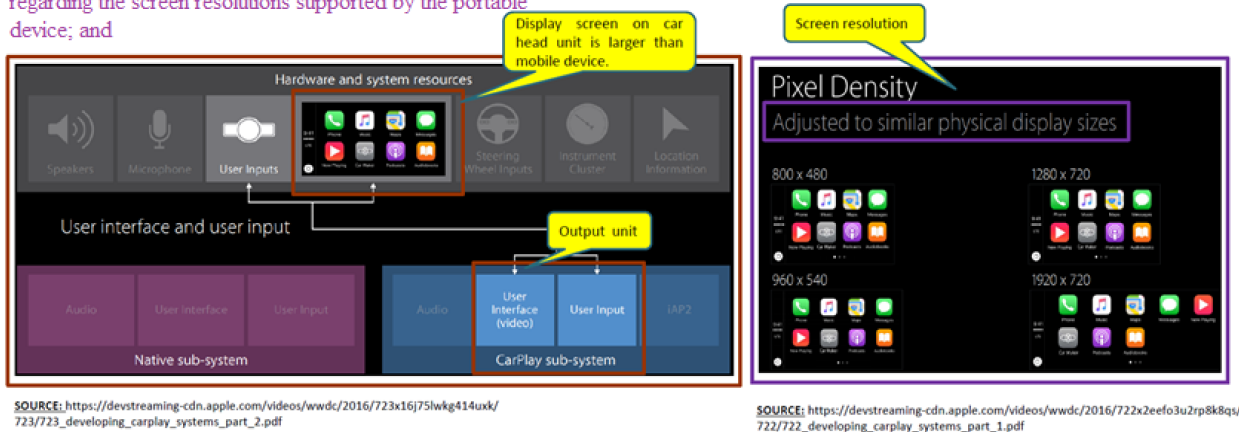


a video output unit configured to display adjusted video information in the form of a visual image, the video output unit having a display screen having a screen specification different from a screen specification of the portable device, wherein the screen specification includes screen resolution information regarding the screen resolutions supported by the portable device; and

Defendant provides a video output unit configured to display adjusted video information in the form of a visual image, the video output unit having a display screen having a screen specification different from a screen specification of the portable device, wherein the screen specification includes screen resolution information regarding the screen resolutions supported by the portable device; and

The video output unit displays the video information output by the pixel information processing unit. The video output unit can be implemented with a liquid crystal display (LCD) panel or an organic light emitting diode (OLED) display panel. See '504 patent Col. 3 l. 11-15. The video output unit outputs the video information received from the pixel information processing unit in the form of a visual image. The video output unit can be implemented with a liquid crystal display (LCD) panel or an organic light emitting diode (OLED) panel. Preferably, the video output unit is provided with a display screen larger than that of the portable device. See '504 patent Col. 4 l. 29-35.

a video output unit configured to display adjusted video information in the form of a visual image, the video output unit having a display screen having a screen specification different from a screen specification of the portable device, wherein the screen specification includes screen resolution information regarding the screen resolutions supported by the portable device; and



a key advisor unit configured to output the supportable key information to the video output unit wherein the key advisor unit is configured to receive the touch position information through the touch input detection unit, and wherein the adjusted video information is video data adjusted to screen resolution supported by the video output unit on the basis of the screen resolution information supported by the portable device, and the touch position information is mapped to one of key values indicated by the supportable key information of the portable device such that the touch position information matches key values of the portable device.

Defendant provides a key advisor unit configured to output the supportable key information to the video output unit wherein the key advisor unit is configured to receive the touch position information through the touch input detection unit, and wherein the adjusted video information is video data adjusted to screen resolution supported by the video output unit on the basis of the screen resolution information supported by the portable device, and the touch position information is mapped to one of key values indicated by the supportable key information of the portable device such that the touch position information matches key values of the portable device.

The key advisor unit and key input unit are each comprised of software utilizing a microprocessor and storage means on a computer to perform their respective steps as outlined in the specification. The specification describes an algorithm to transform a general-purpose microprocessor to a special purpose computer so that a person of ordinary skill in the art can implement the disclosed algorithm to achieve the claimed function. A disclosed algorithm can include steps for achieving a result as shown in the '504 patent specification.

In at least one embodiment, the key adviser unit extracts supportable key information from the connection establishment response signal and transmits the supportable key information to the video output unit so as to be displayed on the screen. See '504 patent Col. 3 l. 16-19. The key input unit is provided with a plurality of keys for generating input key commands. The input key commands are generated by matching the key values input through the key input unit to the key

values of the portable device with reference to the supportable key information. *See* '504 patent Col. 3 *l.* 20-25.

In at least one embodiment, the key advisor unit extracts compatible key information from the connection establishment response signal and displays the compatible key information on the display screen of the video output unit. The key advisor unit displays a key among the keys provided by the compatible key information, which is matched to the key input through the key input unit, on the display screen of the video output unit. If a set of keys are selected by through the key input unit, the key advisor unit displays the keys supported by the portable device on the display screen of the video output unit. If a key is input through the key input unit, the key advisor unit matches the key value of the input key to a key value of the corresponding key supported by the portable device. *See* '504 patent Col. 4 *l.* 48-62. The key input unit is provided with a plurality of keys for generating input key values. *See* '504 patent Col. 4 *l.* 63-64.



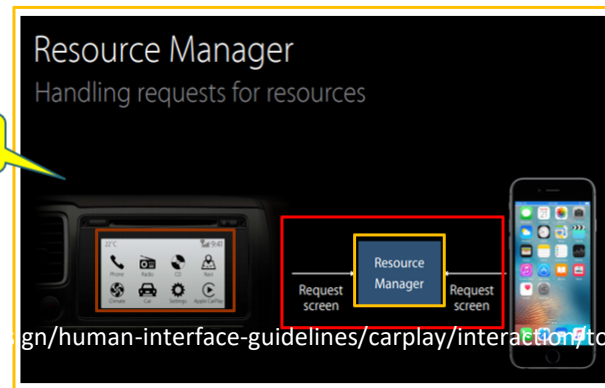
**Multiple User Inputs**  
All combinations are supported

CarPlay automatically adjusts its user interface to match user inputs

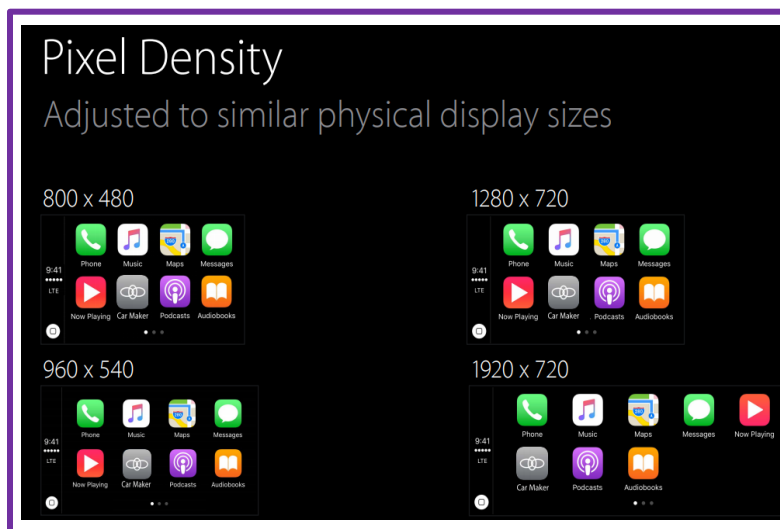
Touchscreen examples

- Touchscreen only
- Touchscreen and rotating knob
- Touchscreen, rotating knob and touchpad

**SOURCE:** [https://devstreaming-cdn.apple.com/videos/wwdc/2016/722x2eefo3u2rp8k8qs/722/722\\_developing\\_carplay\\_systems\\_part\\_1.pdf](https://devstreaming-cdn.apple.com/videos/wwdc/2016/722x2eefo3u2rp8k8qs/722/722_developing_carplay_systems_part_1.pdf)



**SOURCE:** [https://devstreaming-cdn.apple.com/videos/wwdc/2016/723x16j75lwkg414uxk/723/723\\_developing\\_carplay\\_systems\\_part\\_2.pdf](https://devstreaming-cdn.apple.com/videos/wwdc/2016/723x16j75lwkg414uxk/723/723_developing_carplay_systems_part_2.pdf)



**SOURCE:** [https://devstreaming-cdn.apple.com/videos/wwdc/2016/722x2eefo3u2rp8k8qs/722/722\\_developing\\_carplay\\_systems](https://devstreaming-cdn.apple.com/videos/wwdc/2016/722x2eefo3u2rp8k8qs/722/722_developing_carplay_systems)

Touchscreen			
Users can interact with a CarPlay app by performing gestures on the car's built-in touchscreen display. CarPlay supports both low-fidelity and high-fidelity touchscreen displays. High-fidelity screens have lower finger-tracking latency than low-fidelity screens, and therefore support more gestures. Depending on the display, CarPlay apps can respond single-finger gestures, as follows.			
Gesture	Usage	Low-fidelity screen	High-fidelity screen
Tap	Activates a control or selects an item.	●	●
Double-tap	Zooms in and centers content.	●	●
Touch and hold	Activates a control for a period of time. For example, touching and holding the Next Track button in the Music app fast-forwards the currently playing track.	●	●
Flick	Scrolls or pans quickly.		●
Drag	Moves an element from side-to-side or drags an		●

**SOURCE:** <https://developer.apple.com/design/human-interface-guidelines/carplay/interaction/touchscreen/>

## **COUNT II – PATENT INFRINGEMENT**

21. Plaintiff refers to and incorporates herein the allegations of Paragraphs 1-20 above.

22. The '461 patent was duly and legally issued by the United States Patent and Trademark Office on November 27, 2012 after full and fair examination. Plaintiff is the owner by assignment of the '461 patent and possesses all rights of recovery under the '461 patent, including the exclusive right to sue for infringement and recover past damages and obtain injunctive relief.

23. Defendant owns, uses, operates, advertises, controls, sells, and otherwise provides apparatus and methods that infringe the '461 patent. Claim 9 of the '461 patent provides, among other things, "a remote resource access interface apparatus comprising: a key input unit configured to generate input key values; a communication unit configured to transmit a connection establishment request message to determine compatibility with a portable device and in order to establish a connection and, if compatible, to receive a connection establishment response message including screen resolution information and supportable key information from the portable device,

the communication unit further configured to transmit input key information and to receive video information from the portable device after establishing the connection; a video output unit configured to display the video information in the form of a visual image, the video output unit having a display screen larger than the portable device, wherein the screen resolution information includes information regarding the screen resolutions supported by the video output unit; and a key advisor unit configured to extract the supportable key information from the connection establishment response message and output the supportable key information to the video output unit, wherein the key advisor unit displays on a display screen of the video output unit, if a key configuration mode is activated, keys of the portable device and is configured to receive corresponding keys through the key input unit, and wherein key values corresponding to the keys of the key input unit match key values of the portable device, and wherein the video information is video data adjusted in resolution by the portable device for the video output unit on the basis of the screen resolution information, and the input key value is mapped to one of key values indicated by the supportable key information of the portable device.”

24. Defendant has been and is now infringing the ‘461 Patent in the State of Texas, in this judicial district, and elsewhere in the United States, by, among other things, directly or through intermediaries, making, using, importing, testing, providing, supplying, distributing, selling, and/or offering for sale apparatus and methods (including, without limitation, the Defendant’s products including Apple CarPlay functionality of the A-Class, CLA Class, CLS Class, GLA Class, GLE Class, E-Class, GLS Class, and SL Class identified herein as the “Accused Instrumentality”) that provide a remote resource access interface device, covered by at least claim 9 of the ‘461 patent to the injury of Dale Progress Ltd. Defendant is directly infringing, literally

infringing, and/or infringing the '461 patent under the doctrine of equivalents. Defendant is thus liable for infringement of the '461 patent pursuant to 35 U.S.C. § 271.

25. Defendant has induced and continues to induce infringement of the '461 Patent by intending that others use, offer for sale, or sell in the United States, products and/or methods covered by one or more claims of the '461 Patent, including, but not limited to, a remote resource access interface apparatus. Defendant provides these products to others, such as customers, resellers and end-use consumers who, in turn, use, offer for sale, or sell in the United States these a remote resource access interface apparatus that infringe one or more claims of the '461 Patent.

26. Defendant indirectly infringes the '461 Patent by inducing infringement by others, such as resellers, customers and end-use consumers, in accordance with 35 U.S.C. § 271(b) in this District and elsewhere in the United States. Direct infringement is a result of the activities performed by the resellers, customers and end-use consumers of a remote resource access interface apparatus.

27. Defendant received notice of the '461 Patent at least as of the date this lawsuit was filed.

28. Defendant affirmative acts of providing and/or selling the a remote resource access interface apparatus, including manufacturing and distributing, and providing instructions for using the a remote resource access interface apparatus in their normal and customary way to infringe one or more claims of the '461 Patent. Defendant performs the acts that constitute induced infringement, and induce actual infringement, with the knowledge of the '461 Patent and with the knowledge or willful blindness that the induced acts constitute infringement.

29. Defendant specifically intends for others, such as resellers, customers and end-use consumers, to directly infringe one or more claims of the '461 Patent, or, alternatively, has been

willfully blind to the possibility that its inducing acts would cause infringement. By way of example, and not as limitation, Defendant induces such infringement by its affirmative action by, among other things: (a) providing advertising on the benefits of using the Accused Instrumentalities' functionality; (b) providing information regarding how to use the Accused Instrumentalities' functionality; (c) providing instruction on how to use the Accused Instrumentalities' functionality; and (d) providing hardware and/or software components required to infringe the claims of the '461 Patent.

30. Accordingly, a reasonable inference is that Defendant specifically intends for others, such as resellers, customers and end-use consumers, to directly infringe one or more claims of the '461 Patent in the United States because Defendant has knowledge of the '461 Patent at least as of the date this lawsuit was filed and Defendant actually induces others, such as resellers, customers and end-use consumers, to directly infringe the '461 Patent by using, selling, and/or distributing, within the United States, a remote resource access interface apparatus.

31. As a result of Defendant acts of infringement, Plaintiff has suffered and will continue to suffer damages in an amount to be proved at trial.

32. Claim 9 of the '461 patent, claims:

*a remote resource access interface apparatus comprising:*



# Apple CarPlay

## The ultimate copilot.

Available on select cars, CarPlay is a smarter, safer way to use your iPhone in the car. CarPlay takes the things you want to do with your iPhone while driving and puts them right on your car's built-in display. You can get directions, make calls, send and receive messages, and listen to music, all in a way that allows you to stay focused on the road. Just connect your iPhone and go.

**SOURCE:** <https://www.apple.com/ios/carplay/>

### CarPlay

---



Mercedes-Benz

2016 - 2018 A-Class  
2016 - 2018 B-Class  
2016 - 2018 CLA-Class  
2016 - 2018 CLS-Class  
2016 - 2018 E-Class Cabriolet  
2016 - 2018 E-Class Coupe  
2016 - 2018 GLA-Class  
2016 - 2018 GLE-Class  
2017 - 2018 E-Class  
2017 - 2018 GLS-Class  
2017 - 2018 SL-Class

**Source:** <https://www.apple.com/ios/carplay/available-models/> (last accessed January 3, 2019)



2018 Mercedes-Benz E-Class - Overview ...  
cargurus.com



800 x 600

2018 Mercedes-Benz GLE GLE 350 SUV ...  
fjmercedes.com



Mercedes-Benz CLA-Class - Wikipedia  
[en.wikipedia.org](https://en.wikipedia.org)



Mercedes A-Class ...  
[autoweek.com](https://autoweek.com)



2018 Mercedes-Benz CLS-Class: New ...  
autotrader.com



2018 Mercedes-Benz E-class Cabriolet ...  
caranddriver.com



Mercedes-Benz GLA-Class Expert Reviews ...  
cars.com



2018 Mercedes-Benz GLS-Class - Pictures ...  
cargurus.com



2017 Mercedes-Benz SL-class First Drive ...  
caranddriver.com

*a key input unit configured to generate input key values;*

Defendant provides a key input unit configured to generate input key values.

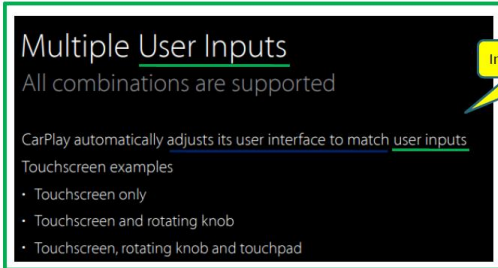
The key advisor unit and key input unit are each comprised of software utilizing a microprocessor and storage means on a computer to perform their respective steps as outlined in the specification. The specification describes an algorithm to transform a general-purpose microprocessor to a special purpose computer so that a person of ordinary skill in the art can implement the disclosed algorithm to achieve the claimed function. A disclosed algorithm can include steps for achieving a result as shown in the '461 patent specification.

In at least one embodiment, the key adviser unit extracts supportable key information from the connection establishment response signal and transmits the supportable key information to the video output unit so as to be displayed on the screen. *See* '461 patent Col. 3 *l.* 9-12. The key input unit is provided with a plurality of keys for generating input key commands. The input key commands are generated by matching the key values input through the key input unit to the key values of the portable device with reference to the supportable key information. *See* '461 patent Col. 3 *l.* 13-17.

In at least one embodiment, the key advisor unit extracts compatible key information from the connection establishment response signal and displays the compatible key information on the display screen of the video output unit. The key advisor unit displays a key among the keys provided by the compatible key information, which is matched to the key input through the key input unit, on the display screen of the video output unit. If a set of keys are selected by through

the key input unit, the key advisor unit displays the keys supported by the portable device on the display screen of the video output unit. If a key is input through the key input unit, the key advisor unit matches the key value of the input key to a key value of the corresponding key supported by the portable device. *See* '461 patent Col. 4 *l.* 37-46. The key input unit is provided with a plurality of keys for generating input key values. The input key commands are generated by matching the key values input through the key input unit to the key values of the portable device with reference to the supportable key information. *See* '461 patent Col. 3 *l.* 13-17.

a key input unit configured to generate input key values;



Input taken from user.

SOURCE: [https://devstreaming-cdn.apple.com/videos/wwdc/2016/722x2eefo3u2rp8k8qs/722/722\\_developing\\_carplay\\_systems\\_part\\_1.pdf](https://devstreaming-cdn.apple.com/videos/wwdc/2016/722x2eefo3u2rp8k8qs/722/722_developing_carplay_systems_part_1.pdf)



SOURCE: <https://www.apple.com/ios/carplay/>



SOURCE: [https://devstreaming-cdn.apple.com/videos/wwdc/2016/722x2eefo3u2rp8k8qs/722/722\\_developing\\_carplay\\_systems\\_part\\_1.pdf](https://devstreaming-cdn.apple.com/videos/wwdc/2016/722x2eefo3u2rp8k8qs/722/722_developing_carplay_systems_part_1.pdf)

a key input unit configured to generate input key values;

## Touchscreen

Users can interact with a CarPlay app by performing gestures on the car's built-in touchscreen display. CarPlay supports both low-fidelity and high-fidelity touchscreen displays. High-fidelity screens have lower finger-tracking latency than low-fidelity screens, and therefore support more gestures. Depending on the display, CarPlay apps can respond single-finger gestures, as follows.

Gestures	Usage	Low-fidelity screen	High-fidelity screen
Tap	Activates a control or selects an item.	●	●
Double-tap	Zooms in and centers content.	●	●
Touch and hold	Activates a control for a period of time. For example, touching and holding the Next Track button in the Music app fast-forwards the currently playing track.	●	●
Flick	Scrolls or pans quickly.		●
Drag	Moves an element from side-to-side or drags an		●

SOURCE: <https://developer.apple.com/design/human-interface-guidelines/carplay/interaction/touchscreen/>

*a communication unit configured to transmit a connection establishment request message to determine compatibility with a portable device and in order to establish a connection and, if compatible, to receive a connection establishment response message including screen resolution information and supportable key information from the portable device, the communication unit further configured to transmit input key information and to receive video information from the portable device after establishing the connection;*

Defendant provides a communication unit configured to transmit a connection establishment request message to determine compatibility with a portable device and in order to establish a connection and, if compatible, to receive a connection establishment response message including screen resolution information and supportable key information from the portable device, the communication unit further configured to transmit input key information and to receive video information from the portable device after establishing the connection.

The specification discloses sufficient structure for one of ordinary skilled in the art to build or program a communication unit. The specification clearly states that a communication unit utilizes wireless communication interfaces to perform the claim limitation functions.

The communication unit can be provided with at least one of wireless communication interfaces specified by Bluetooth, wireless fidelity (wi-fi), ZigBee, wireless broadband (WiBro) protocols for communicating with the portable device. The communication unit also can be connected to the portable device through a communication wire so as to exchange data with the portable device in series or in parallel. *See* '461 patent Col. 3 l. 65-67 & Col. 4 l. 1-5.

a communication unit configured to transmit a connection establishment request message to determine compatibility with a portable device and in order to establish a connection and, if compatible, to receive a connection establishment response message including screen resolution information and supportable key information from the portable device, the communication unit further configured to transmit input key information and to receive video information from the portable device after establishing the connection;

Input key(voice) is transferred for connection set up.

supportable key information of the portable device includes touch position information to match the position of portable device.

Pixel Density  
Adjusted to similar physical display sizes

800 x 480 1280 x 720  
960 x 540 1920 x 720

Multiple User Inputs  
All combinations are supported

CarPlay automatically adjusts its user interface to match user inputs

Touchscreen examples

- Touchscreen only
- Touchscreen and rotating knob

rotating knob and touchpad

Apple CarPlay™  
Connect an Apple CarPlay-compatible iPhone to the system. You can use the touchscreen to make a phone call, listen to music, and more. Visit the Apple CarPlay website for more information.

SOURCE: [https://devstreaming-cdn.apple.com/videos/wwdc/2016/723x16j75lwgk414uxk/723/723\\_developing\\_carplay\\_systems\\_part\\_2.pdf](https://devstreaming-cdn.apple.com/videos/wwdc/2016/723x16j75lwgk414uxk/723/723_developing_carplay_systems_part_2.pdf)

SOURCE: [http://m.owners.honda.com/assets/2018/Accord\\_Sedan/Features/2018\\_ACCORD\\_4D\\_Apple\\_CarPlay\\_Integration.pdf](http://m.owners.honda.com/assets/2018/Accord_Sedan/Features/2018_ACCORD_4D_Apple_CarPlay_Integration.pdf)

SOURCE: [https://devstreaming-cdn.apple.com/videos/wwdc/2016/722x2eefo3u2rp8k8qs/722/722\\_developing\\_carplay\\_systems\\_part\\_1.pdf](https://devstreaming-cdn.apple.com/videos/wwdc/2016/722x2eefo3u2rp8k8qs/722/722_developing_carplay_systems_part_1.pdf)



**Source:** [https://devstreaming-cdn.apple.com/videos/wwdc/2016/723x16j75lwkg414uxk/723/723\\_developing\\_carplay\\_systems\\_part\\_2.pdf](https://devstreaming-cdn.apple.com/videos/wwdc/2016/723x16j75lwkg414uxk/723/723_developing_carplay_systems_part_2.pdf)

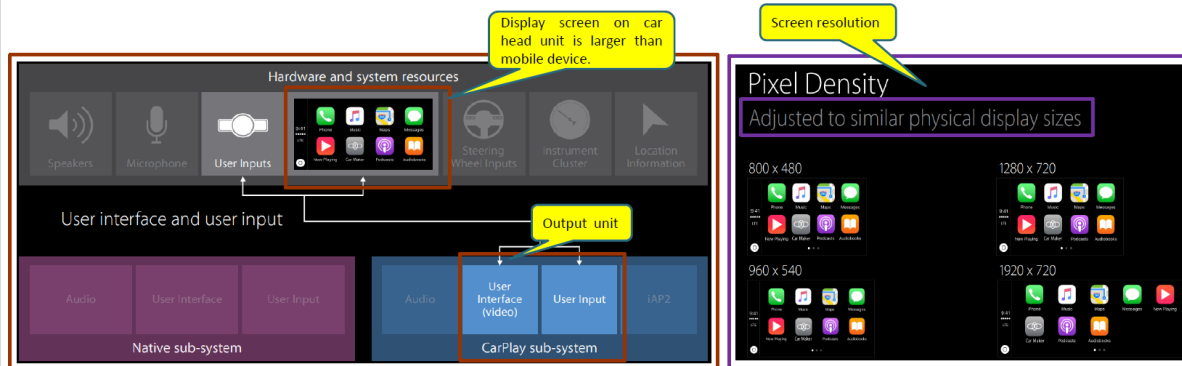
*a video output unit configured to display the video information in the form of a visual image, the video output unit having a display screen larger than the portable device, wherein the screen resolution information includes information regarding the screen resolutions supported by the video output unit; and*

Defendant provides a video output unit configured to display the video information in the form of a visual image, the video output unit having a display screen larger than the portable device, wherein the screen resolution information includes information regarding the screen resolutions supported by the video output unit; and

The video output unit displays the video information output by the pixel information processing unit. The video output unit can be implemented with a liquid crystal display (LCD) panel or an organic light emitting diode (OLED) display panel. *See* '461 patent Col. 3 *l.* 4-8.

The video output unit outputs the video information received from the pixel information processing unit in the form of a visual image. The video output unit can be implemented with a liquid crystal display (LCD) panel or an organic light emitting diode (OLED) panel. Preferably, the video output unit is provided with a display screen larger than that of the portable device. *See* '461 patent Col. 4 *l.* 19-25.

*a video output unit configured to display the video information in the form of a visual image, the video output unit having a display screen larger than the portable device, wherein the screen resolution information includes information regarding the screen resolutions supported by the video output unit; and*



**Source:** [https://devstreaming-cdn.apple.com/videos/wwdc/2016/723x16j75lwkg414uxk/723/723\\_developing\\_carplay\\_systems\\_part\\_2.pdf](https://devstreaming-cdn.apple.com/videos/wwdc/2016/723x16j75lwkg414uxk/723/723_developing_carplay_systems_part_2.pdf)

**Source:** [https://devstreaming-cdn.apple.com/videos/wwdc/2016/722x2eefo3u2rp8k8qs/722/722\\_developing\\_carplay\\_systems\\_part\\_1.pdf](https://devstreaming-cdn.apple.com/videos/wwdc/2016/722x2eefo3u2rp8k8qs/722/722_developing_carplay_systems_part_1.pdf)

*a key advisor unit configured to extract the supportable key information from the connection establishment response message and output the supportable key information to the video output unit, wherein the key advisor unit displays on a display screen of the video output unit, if a key configuration mode is activated, keys of the portable device and is configured to receive corresponding keys through the key input unit, and*

Defendant provides a key advisor unit configured to extract the supportable key information from the connection establishment response message and output the supportable key information to the video output unit, wherein the key advisor unit displays on a display screen of the video output unit, if a key configuration mode is activated, keys of the portable device and is configured to receive corresponding keys through the key input unit, and wherein key values corresponding to the keys of the key input unit match key values of the portable device, and wherein the video information is video data adjusted in resolution by the portable device for the video output unit on the basis of the screen resolution information, and the input key value is mapped to one of key values indicated by the supportable key information of the portable device.

The key advisor unit and key input unit are each comprised of software utilizing a microprocessor and storage means on a computer to perform their respective steps as outlined in the specification. The specification describes an algorithm to transform a general-purpose microprocessor to a special purpose computer so that a person of ordinary skill in the art can implement the disclosed algorithm to achieve the claimed function. A disclosed algorithm can include steps for achieving a result as shown in the '461 patent specification.

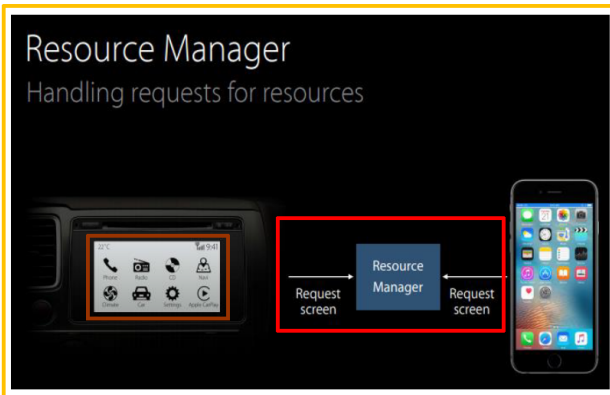
In at least one embodiment, the key adviser unit extracts supportable key information from the connection establishment response signal and transmits the supportable key information to the video output unit so as to be displayed on the screen. *See* '461 patent Col. 3 *l.* 9-12. The key input unit is provided with a plurality of keys for generating input key commands. The input key commands are generated by matching the key values input through the key input unit to the key values of the portable device with reference to the supportable key information. *See* '461 patent Col. 3 *l.* 13-17.

In at least one embodiment, the key advisor unit extracts compatible key information from the connection establishment response signal and displays the compatible key information on the display screen of the video output unit. The key advisor unit displays a key among the keys provided by the compatible key information, which is matched to the key input through the key input unit, on the display screen of the video output unit. If a set of keys are selected by through the key input unit, the key advisor unit displays the keys supported by the portable device on the display screen of the video output unit. If a key is input through the key input unit, the key advisor unit matches the key value of the input key to a key value of the corresponding key supported by the portable device. *See* '461 patent Col. 4 *l.* 37-46. The key input unit is provided with a plurality of keys for generating input key values. The input key commands are generated by matching the key values input through the key input unit to the key values of the portable device with reference to the supportable key information. *See* '461 patent Col. 3 *l.* 13-17.

*wherein key values corresponding to the keys of the key input unit match key values of the portable device, and wherein the video information is video data adjusted in resolution by the portable*

device for the video output unit on the basis of the screen resolution information, and the input key value is mapped to one of key values indicated by the supportable key information of the portable device.

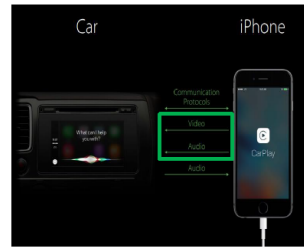
and wherein key values corresponding to the keys of the key input unit match key values of the portable device, and wherein the video information is video data adjusted in resolution by the portable device for the video output unit on the basis of the screen resolution information, and the input key value is mapped to one of key values indicated by the supportable key information of the portable device.



SOURCE: <https://www.idownloadblog.com/2014/04/19/app-store-guide/>



SOURCE: [https://devstreaming-cdn.apple.com/videos/wwdc/2016/722x2eefo3u2rp8k8qs/722/722\\_developing\\_carplay\\_systems\\_part\\_1.pdf](https://devstreaming-cdn.apple.com/videos/wwdc/2016/722x2eefo3u2rp8k8qs/722/722_developing_carplay_systems_part_1.pdf)



SOURCE: [https://devstreaming-cdn.apple.com/videos/wwdc/2016/722x2eefo3u2rp8k8qs/722/722\\_developing\\_carplay\\_systems\\_part\\_1.pdf](https://devstreaming-cdn.apple.com/videos/wwdc/2016/722x2eefo3u2rp8k8qs/722/722_developing_carplay_systems_part_1.pdf)

and wherein key values corresponding to the keys of the key input unit match key values of the portable device, and wherein the video information is video data adjusted in resolution by the portable device for the video output unit on the basis of the screen resolution information, and the input key value is mapped to one of key values indicated by the supportable key information of the portable device.

## Touchscreen

Users can interact with a CarPlay app by performing gestures on the car's built-in touchscreen display. CarPlay supports both low-fidelity and high-fidelity touchscreen displays. High-fidelity screens have lower finger-tracking latency than low-fidelity screens, and therefore support more gestures. Depending on the display, CarPlay apps can respond single-finger gestures, as follows.

Gesture	Usage	Low-fidelity screen	High-fidelity screen
Tap	Activates a control or selects an item.	●	●
Double-tap	Zooms in and centers content.	●	●
Touch and hold	Activates a control for a period of time. For example, touching and holding the Next Track button in the Music app fast-forwards the currently playing track.	●	●
Flick	Scrolls or pans quickly.		●
Drag	Moves an element from side-to-side or drags an		●

SOURCE: <https://developer.apple.com/design/human-interface-guidelines/carplay/interaction/touchscreen/>

33. Defendant's aforesaid activities have been without authority and/or license from Plaintiff.

34. To the extent 35 U.S.C. § 287 is determined to be applicable, Plaintiff is informed and believes its requirements have been satisfied with respect to the '504 and '461 patents.

35. Plaintiff is entitled to recover from Defendant the damages sustained by Plaintiff as a result of the Defendant's wrongful acts in an amount subject to proof at trial, which, by law, cannot be less than a reasonable royalty, together with interest and costs as fixed by this Court under 35 U.S.C. § 284.

#### **JURY DEMAND**

Plaintiff hereby requests a trial by jury pursuant to Rule 38 of the Federal Rules of Civil Procedure.

#### **PRAYER FOR RELIEF**

Plaintiff respectfully requests that the Court find in its favor and against the Defendant, and that the Court grant Plaintiff the following relief:

- A. A judgment in favor of Plaintiff that Defendant has infringed one or more of the claims, directly, jointly, and/or indirectly the '504 and '461 patents;
- B. A permanent injunction pursuant to 35 U.S.C. § 283, enjoining Defendant and their officers, directors, agents servants, affiliates, employees, divisions, branches, subsidiaries, parents, and all others acting in active concert therewith from infringement, inducing the infringement of, or contributing to the infringement of the '461 and '504 patents, or such other equitable relief the Court determines is warranted;
- C. An award to Plaintiff of damages adequate to compensate Plaintiff for the Defendant's acts of infringement together with pre-judgment and post-judgment interest;
- D. That, should Defendant's acts of infringement be found to be willful from the time that Defendant became aware of the infringing nature of their actions, which is the time of filing of Plaintiff's Original Complaint at the latest, that the Court award treble damages for the period of such willful infringement pursuant to 35 U.S.C. §

284;

E. Any further relief that this Court deems just and proper.

Dated: January 3, 2019

Respectfully submitted,

By: /s/ Austin Hansley  
**HANSLEY LAW FIRM, PLLC**  
Austin Hansley  
Texas Bar No.: 24073081  
13355 Noel Rd. STE 1100  
Dallas, Texas 75240  
Telephone: (972) 528-9321 Ext. 1000  
Facsimile: (972) 370-3559  
Email: ahansley@hansleyfirm.com  
www.hansleyfirm.com  
**ATTORNEY FOR PLAINTIFF**  
**DALE PROGRESS LTD.**

**CERTIFICATE OF SERVICE**

I hereby certify that on January 3, 2019, I electronically filed the foregoing document with the clerk of the court for the U.S. District Court, Eastern District of Texas, Marshall Division, using the electronic case filing system of the court. The electronic case filing system sent a "Notice of Electronic Filing" to the attorneys of record who have consented in writing to accept this Notice as service of this document by electronic means.

/s/ Austin Hansley  
Austin Hansley