

**UNITED STATES DISTRICT COURT
FOR THE EASTERN DISTRICT OF TEXAS
TEXARKANA DIVISION**

KAMINO LLC,

Plaintiff

v.

COOLPAD TECHNOLOGIES, INC.,

Defendant

Case No. 5:19-cv-00056

JURY TRIAL DEMANDED

COMPLAINT FOR PATENT INFRINGEMENT

Plaintiff Kamino LLC (“Plaintiff” or “Kamino”) hereby asserts the following claims for patent infringement against Defendant Coolpad Technologies, Inc. (“Defendant” or “Coolpad”), and alleges, on information and belief, as follows:

THE PARTIES

1. Kamino is a limited liability company organized and existing under the laws of the Texas with its principal place of business at 17330 Preston Road, Suite 200D, Dallas, Texas 75252.
2. Defendant is a Delaware corporation with a regular established place of business 6175 Main Street, Suite 290, Frisco, TX 75034.

JURISDICTION AND VENUE

3. This action arises under the patent laws of the United States, 35 U.S.C. § 1, *et seq.* This Court has subject matter jurisdiction under 28 U.S.C. §§ 1331 and 1338(a).
4. Defendant has committed acts of infringement in this judicial district.

5. Defendant has a regular and established place of business in this judicial district at 6175 Main Street, Suite 290, Frisco, Texas 75034. <https://coolpad.us/privacy-policy/>

6. On information and belief, the Court has personal jurisdiction over Defendant because Defendant has committed, and continues to commit, acts of infringement in the state of Texas, has conducted business in the state of Texas, and/or has engaged in continuous and systematic activities in the state of Texas.

7. On information and belief, Defendant's instrumentalities that are alleged herein to infringe were and continue to be used, imported, offered for sale, and/or sold in the Eastern District of Texas.

8. Venue is proper in the Eastern District of Texas pursuant to 28 U.S.C. § 11400(b).

THE PATENT-IN SUIT

9. On August 20, 2002, United States Patent No. 6,435,686 (the "686 patent"), entitled "Light Conducting Plate for a Back Lighting Device and Back Lighting Device," was duly and lawfully issued by the U.S. Patent and Trademark Office. A true and correct copy of the '686 patent is attached hereto as Exhibit A.

10. Kamino is the assignee and owner of the right, title and interest in and to the '686 patent, including the right to assert all causes of action arising under said patents and the right to any remedies for infringement of them.

COUNT I – INFRINGEMENT OF U.S. PATENT NO. 6,435,686

11. Kamino repeats and realleges the allegations of paragraphs 1 through 10 as if fully set forth herein.

12. Claim 1 of the '686 Patent recites:

1. A light conducting plate for a back lighting device, comprising:

a light-inlet end face for introducing light emitted from a light source to be disposed facing said light conducting plate;

a reflecting face for reflecting the light introduced through said light-inlet end face; and

a light-outlet face disposed opposite to said reflecting face for allowing the light reflected from the reflecting face to emit therethrough,

wherein said reflecting face includes a light-scattering region and a remainder region, and the remainder region is located on a side near to said light-inlet end face.

13. Without license or authorization and in violation of 35 U.S.C. § 271(a), Defendant has infringed and continues to infringe the '686 patent by making, using, importing, offering for sale, and/or selling mobile devices, such as the Coolpad Defiant and the Coolpad Rogue (the "Accused Products").

14. As exemplified below, the Coolpad Defiant includes a light conducting plate as claimed by the '686 Patent.

1. A light conducting plate for a back lighting device, comprising:

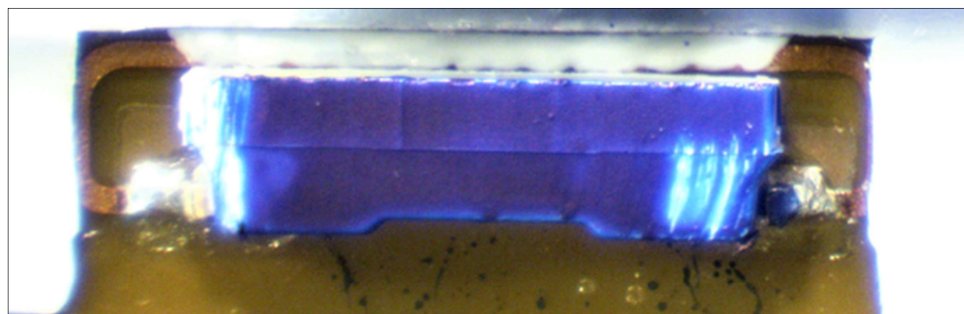
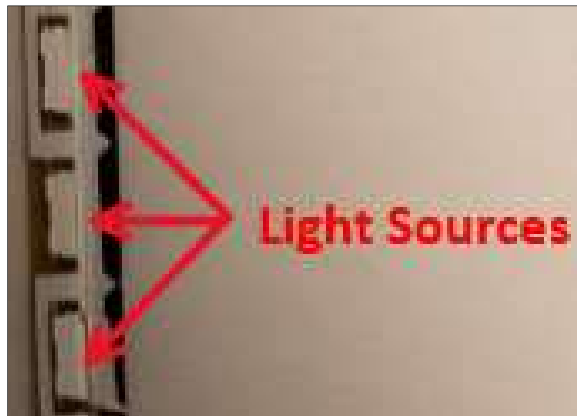
Teardown evidence illustrates that the Coolpad Defiant includes a light conducting plate. This light conducting plate include a light-inlet end face, a reflecting face, and a light outlet face. The reflecting face includes a light-scattering region and a remainder region.



a light-inlet end face for introducing light emitted from a light source to be disposed facing said light conducting plate;

The light conducting plate includes a light-inlet and end face for introducing light emitted from a light source.

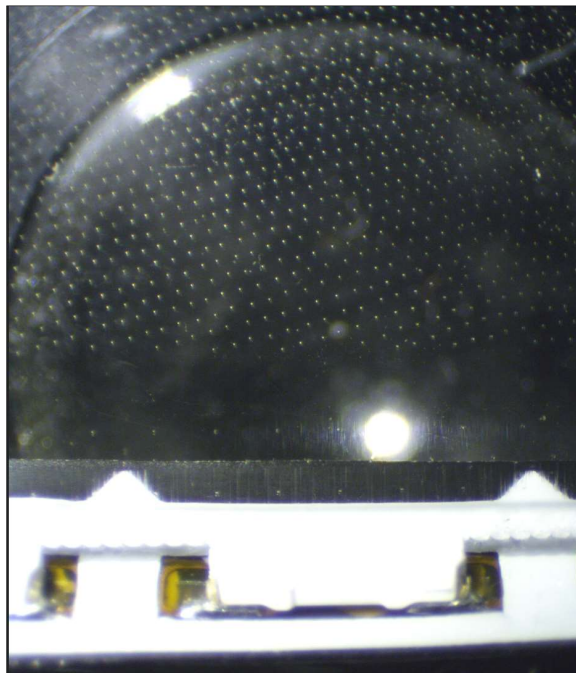




a reflecting face for reflecting the light introduced through said light-inlet end face; and

The light conducting plate includes a reflecting face for reflecting the light introduced through the light-inlet end face.





a light-outlet face disposed opposite to said reflecting face for allowing the light reflected from the reflecting face to emit therethrough,

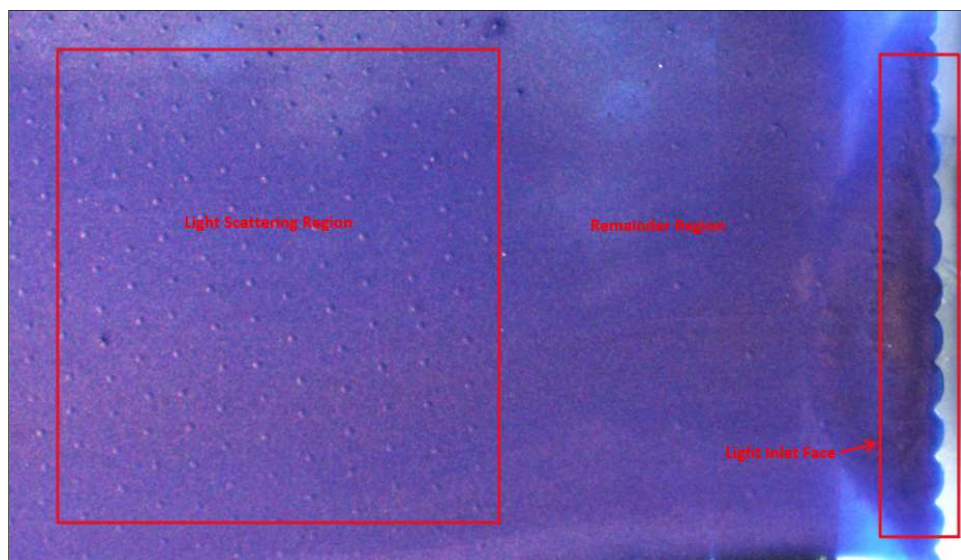
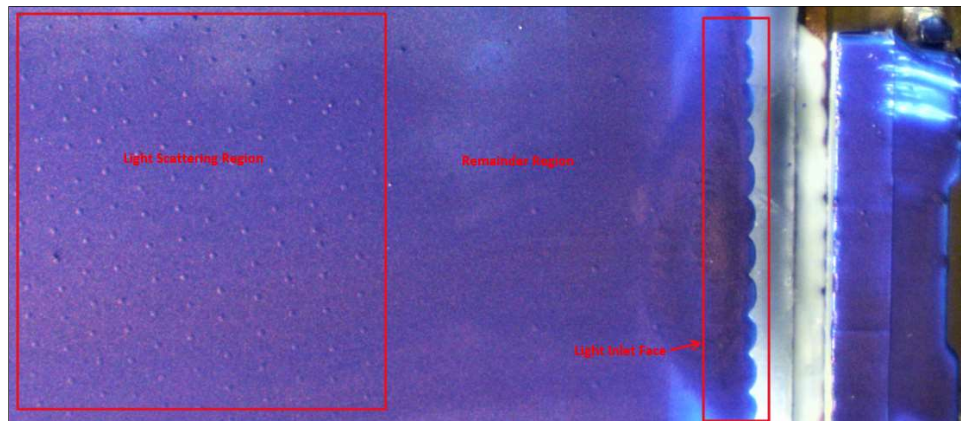
The light conducting plate includes a light-outlet face disposed opposite to the reflecting face for allowing the light reflected from the reflecting face to emit therethrough.



wherein said reflecting face includes a light-scattering region and a remainder region, and the remainder region is located on a side near to said light-inlet end face.

The reflecting face includes a light-scattering region and a remainder region. The

remainder region is located on a side near to the light-inlet face.



15. As exemplified below, the Coolpad Rogue includes a light conducting plate as claimed by the '686 Patent.

1. A light conducting plate for a back lighting device, comprising:

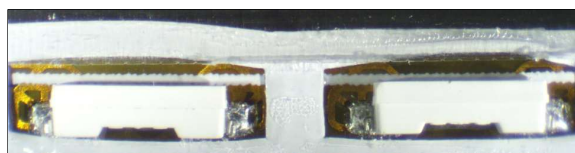
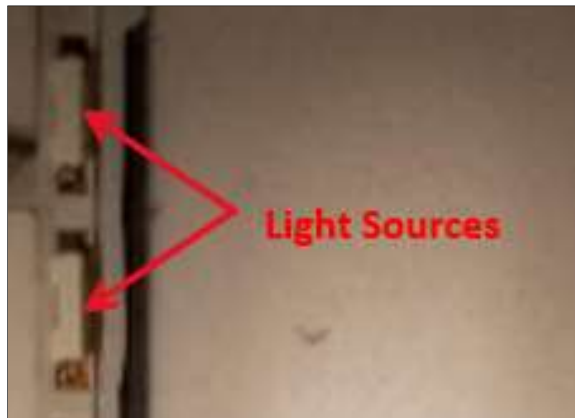
Teardown evidence illustrates that the Coolpad Rogue includes a light conducting plate. This light conducting plate include a light-inlet end face, a reflecting face, and a light outlet face. The reflecting face includes a light-scattering region and a remainder region.



a light-inlet end face for introducing light emitted from a light source to be disposed facing said light conducting plate;

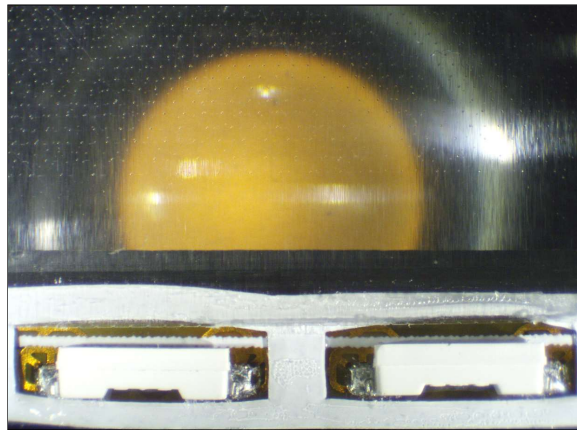
The light conducting plate includes a light-inlet and end face for introducing light emitted from a light source.





a reflecting face for reflecting the light introduced through said light-inlet end face; and

The light conducting plate includes a reflecting face for reflecting the light introduced through the light-inlet end face.



a light-outlet face disposed opposite to said reflecting face for allowing the light reflected from the reflecting face to emit therethrough,

The light conducting plate includes a light-outlet face disposed opposite to the reflecting face for allowing the light reflected from the reflecting face to emit therethrough.



wherein said reflecting face includes a light-scattering region and a remainder region, and the remainder region is located on a side near to said light-inlet end face.

The reflecting face includes a light-scattering region and a remainder region. The remainder region is located on a side near to the light-inlet face.



16. Kamino is entitled to recover from Defendant the damages sustained by Kamino as a result of Defendant's infringement of the '686 patent in an amount subject to proof at trial, which, by law, cannot be less than a reasonable royalty, together with interest and costs as fixed by this Court under 35 U.S.C. § 284.

PRAYER FOR RELIEF

WHEREFORE, Plaintiff respectfully requests the Court enter judgment against Defendant:

WHEREFORE, Kamino requests that this Court enter judgment against Defendant as follows:

- A. An adjudication that Defendant has infringed the '686 patent;
- B. An award of damages to be paid by Defendant adequate to compensate Kamino for Defendant's past infringement of the '686 patent and any continuing or future infringement through the date such judgment is entered, including interest, costs, expenses and an accounting of all infringing acts including, but not limited to, those acts not presented at trial;
- C. A declaration that this case is exceptional under 35 U.S.C. § 285, and an award of Kamino's reasonable attorneys' fees; and
- D. An award to Kamino of such further relief at law or in equity as the Court deems just and proper.

JURY DEMAND

Plaintiff demands trial by jury, Under Fed. R. Civ. P. 38.

Dated: May 7, 2019

Respectfully Submitted

/s/ Raymond W. Mort, III

Raymond W. Mort, III
Texas State Bar No. 00791308
raymort@austinlaw.com

THE MORT LAW FIRM, PLLC
100 Congress Ave, Suite 2200
Austin, Texas 78701
Tel/Fax: (512) 865-7950

ATTORNEYS FOR PLAINTIFF