

IN THE UNITED STATES DISTRICT COURT
FOR THE EASTERN DISTRICT OF TEXAS
MARSHALL DIVISION

BLITZSAFE TEXAS, LLC,

Plaintiff,

v.

AB VOLVO,

Defendant.

§
§
§
§
§
§
§
§
§
§
§
§
§
§
§
§
§
§
§

Case No.

JURY TRIAL DEMANDED

PLAINTIFF’S ORIGINAL COMPLAINT FOR PATENT INFRINGEMENT

Plaintiff, Blitzsafe Texas, LLC (“Blitzsafe” or “Plaintiff”), files this Original Complaint against Defendant AB Volvo (“Defendant” or “Volvo”), for patent infringement under 35 U.S.C. § 271 and alleges as follows:

THE PARTIES

1. Plaintiff, Blitzsafe Texas, LLC, is a limited liability company organized and existing under the laws of the State of Texas, and maintains its principal place of business at 100 W. Houston Street, Marshall, Texas 75670. Blitzsafe sells automotive interface products that allow the end user to connect a third-party external audio device or multimedia device to a car stereo in order to play the content on the device through the car stereo system and speakers. Blitzsafe sells its products throughout the United States including in this judicial district. Blitzsafe is the owner of all right, title, and interest in and to U.S. Patent No. 7,489,786 and U.S. Patent No. 8,155,342.

2. Upon information and belief, Defendant AB Volvo (“AB Volvo”) is a Swedish company with its principal place of business located at Taxistopp 1, VHK, Amazonvagen, Göteborg, 40508. On information and belief, AB Volvo does business itself, or through its subsidiaries and affiliates, in the State of Texas and the Eastern District of Texas.

3. Upon information and belief, Defendant is the exclusive manufacturer, importer, and distributor of Volvo and Mack-branded vehicles. Upon information and belief, Defendant manufactures and assembles, both in the United States and internationally, Volvo and Mack-branded vehicles. Upon information and belief, Defendant offers for sale, sells, and distributes Volvo and Mack branded vehicles through its relationships with Volvo Truck and Mack Truck dealers (“Dealers”).

4. Upon information and belief, Defendant engages in the sale and service of products that infringe the patents-in-suit at numerous vehicle dealerships in the Eastern District of Texas, including, for example, East Texas Mack,¹ Texarkana Mack and Volvo Trucks,² and Hall Truck Center.³

JURISDICTION

5. This is an action for patent infringement arising under the patent laws of the United States, 35 U.S.C. §§ 1, *et seq.* This Court has jurisdiction over this action pursuant to 28 U.S.C. §§ 1331 and 1338(a).

6. This Court has personal jurisdiction over Defendant. Defendant conducts business and have committed acts of patent infringement and/or have induced acts of patent infringement

¹ Located in Longview, Texas. *See* <https://www.east-texas-mack.com/>.

² Located in Texarkana, Texas. *See* <http://texarkanamack.com/>.

³ Located in Tyler, Texas. *See* <https://www.hallvolvogmc.net/>

by others in this Judicial District and/or has contributed to patent infringement by others in this Judicial District, the State of Texas, and elsewhere in the United States.

7. Upon information and belief, Defendant transacts substantial business in the state of Texas and this Judicial District. Defendant has committed acts of infringement in this Judicial District by, among other things, offering to sell and selling products that infringe the asserted patents, including the accused devices as alleged herein, as well as providing service and support to its customers in this Judicial District. Upon information and belief, Defendant, directly or indirectly, participates in the stream of commerce that results in products, including the accused products, being made, used, offered for sale, and/or sold in the state of Texas and/or imported into the United States to the state of Texas.

8. Venue is proper in this judicial district pursuant to 28 U.S.C. §§ 1391(b), 1391(c) and 1400(b) because, among other things, Defendant is subject to personal jurisdiction in this judicial district, Defendant has regularly conducted business in this Judicial District, certain of the acts complained of herein occurred in this judicial district, and defendants not resident in the United States may be sued in any judicial district.

PATENTS-IN-SUIT

9. On February 10, 2009, the United States Patent and Trademark Office duly and legally issued U.S. Patent No. 7,489,786 (the “’786 Patent”) entitled “Audio Device Integration System.” A true and correct copy of the ’786 Patent is available at <https://pdfpiw.uspto.gov/.piw?PageNum=0&docid=07489786>.

10. On April 10, 2012, the United States Patent and Trademark Office duly and legally issued U.S. Patent No. 8,155,342 (the “’342 Patent”) entitled “Multimedia Device Integration

System.” A true and correct copy of the ’342 Patent is available at <https://pdfpiw.uspto.gov/.piw?PageNum=0&docid=08155342>.

11. Blitzsafe is the sole and exclusive owner of all right, title, and interest to and in the ’786 Patent and the ’342 Patent (together, the “Patents-in-Suit”), and holds the exclusive right to take all actions necessary to enforce its rights to the Patents-in-Suit, including the filing of this patent infringement lawsuit. Blitzsafe also has the right to recover all damages for past, present, and future infringement of the Patents-in-Suit and to seek injunctive relief as appropriate under the law.

FACTUAL ALLEGATIONS

12. The patents-in-suit generally cover systems for integrating third-party audio devices and multimedia devices with a car stereo.

13. Plaintiff has complied with the requirements of 35 U.S.C. § 287(a).

14. Defendant manufactures, offers to sell, sells, and/or imports into the United States audio and multimedia integration systems which have been installed in Volvo and Mack branded vehicles made in or imported into the United States since at least approximately 2015, as well as accessories to be installed at or after the time of delivery of the vehicle (hereinafter collectively referred to as “Infotainment Systems”). These Infotainment Systems include head unit, extension modules, and iPod/iPhone and MP3 integration kits that Defendant makes and sells through its subsidiaries, and purchase from third-party suppliers including, but not limited to, Pana-Pacific, Aptiv (formerly Delphi), and Peiker.

15. The Infotainment Systems are sold in at least the following vehicles during the period from 2015 to the present: Mack Granite, Mack Anthem, Mack Pinnacle, Mack LR, Mack TerraPro, MDSeries, VNR Electric, VNL, VNX, VHD, and VAH.

16. The Infotainment Systems support the integration of third-party external audio and multimedia devices, such as MP3 players, with the vehicle stereo. The Infotainment Systems permit an end user to connect a third-party external audio or multimedia device to the car stereo by wire, such as through a USB port or auxiliary port, or wirelessly, such as through Bluetooth. Once connected, the end user may control the third-party external audio or multimedia device using the vehicle stereo's controls, and the audio from the external device may be played through the vehicle stereo and speakers while text, pictures, visual images, and video may be displayed on the display screen of the vehicle stereo.

17. Defendant's user manuals, instructional videos, websites, and other information demonstrate to the Volvo Trucks and Mack Trucks users, customers, and prospective customers how an external audio device and external multimedia device may be connected to the car stereo by wire to, for example, a USB port, or wirelessly by Bluetooth, and how the external device may be controlled by the vehicle stereo's controls. For example, the Manual for a Mack Truck instructs:

Dear Mack® Owner

Congratulations on your new truck and thank you for your confidence! We hope you will derive great satisfaction and benefit from your truck for many years to come.

This driver's manual contains information tailored to your particular truck. It covers the truck's equipment, care and maintenance, as well as tips for safe and fuel-efficient driving. To help you get the most out of your truck, we recommend that you take advantage of our advice and tips.

If you have any questions or want to know more about your truck, contact your authorized Mack dealer.

Mack Trucks
Greensboro, NC USA

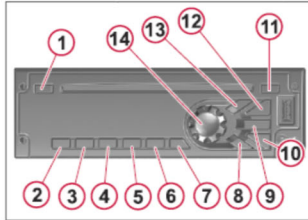
©2015 Mack Trucks, Greensboro, NC USA

All rights reserved. No part of this publication may be reproduced, stored in a retrieval system, or transmitted in any form by any means, electronic, mechanical, photocopying, recording or otherwise, without the prior written permission of Mack Trucks.

INFOTAINMENT
RADIO

Introduction

The information provided are general features found for the operation of the DEA5XX Radio.



- 1 Phone
- 2 Play/Pause
- 3 Browse
- 4 Check/Alarm
- 5 RPT (Repeat)
- 6 RDM (Random)
- 7 ESC (Escape)
- 8 DSP (Display)
- 9 Scan/ASCN (Scan/Autoscan)
- 10 PREV (Previous)
- 11 Eject
- 12 Next (Next)
- 13 SRC/PWR (Source/Power)
- 14 Knob

188

Radio Button Operation

- **SRC/PWR:** Press to switch to FM -> AM -> WX -> SXM -> CD -> USB/ iPod -> AUX -> Bluetooth Audio (if equipped) and to turn Radio ON. Press and hold to turn radio OFF.
- **One-Hour Timer:** With the ignition off, pressing the SRC/PWR button will turn on the receiver and activate the receiver's one-hour timer.
- **VOLUME KNOB/OK:** Press for less than 3 seconds to display Audio Control Menu. Press for more than 3 seconds to Show the User Menu. Rotate to Increase/decrease Volume or during a Menu for Navigation.
- **PREV (Previous/Reverse):** Press to select previous track or station. Press and hold for FR or Tune Down
- **NEXT (Next/Forward):** Press to select next track or station. Press and hold for FF or Tune Up.
- **EJECT:** Press to eject the CD
- **PHONE (If equipped):** Press the Phone button for more than 3 seconds to Show the Bluetooth Menu. When Bluetooth is enabled, press the button to display the Dial Menu or to accept and Incoming Call

(if a Phone is paired). During a call Press the button for more than 3 seconds to transfer the call from the radio to the Phone.

- **CLOCK ALARM:** Press during Alarm activation to cancel the Alarm.
- **SCAN/ASCAN:** Scans stations/CD tracks/MP3/ WMA files and folders and stores strongest stations to presets.
- **PLAY/PAUSE:** Press to pause/ unpause current Media.
- **RPT (Repeat):** Press to repeat current track. Press again to stop repeat. Look for the RPT icon to turn on in the radio display.
- **BROWSE:** Press to Navigate on the device and select a specific song or play context (Applicable to USB sticks, CD MP3 discs and iPods)
- **RDM (Random):** Press to play the tracks randomly. Press again to stop random mode. Look for the RDM icon to turn on in the radio display.
- **ESC (ESCAPE):** Press to exit one Menu Level.
- **DISP (DISPLAY):** If vehicle Ignition is ON: Press to Change Source Display Views. Press for more than 3 seconds to show the Clock for a short time. If vehicle Ignition is OFF:

X Publication_PC28

**INFOTAINMENT
RADIO**

Press to turn on the Radio and show the clock for a few seconds.

Radio Features

To access AM, FM, WX, SXM (if equipped), iPod, USB, Rear Aux, Front Aux, CD or BT Audio do one of the following:

- Press the SRC radio button to scroll through the options and select the desired one.
- Press the SRC button and then scroll the source menu by knob rotation or NEXT/PREV short presses and then select by short-pressing the knob. CD/MP3, USB/iPod, Front AUX and BT Audio shall be accessed only if the radio model supports them and a device is connected/inserted for that specific source.

AM-FM-WX Radio

Tuning: Select the desired "Tuner Configuration" following the steps in the Audio Controls Menu section.

If is set to MANUAL, the radio will: Execute Manual Tuning when the NEXT/PREV buttons are short pressed and Execute Seek when the NEXT/ PREV buttons are long pressed. If is set to AUTO, the radio will: Execute Seek when the NEXT/PREV buttons are short pressed and Execute Manual Tuning

X Publication_PC28

when the NEXT/PREV buttons are long pressed.

Manual Tuning: The current frequency will be increased/decreased by 1 step of 0.2MHz (USA FM mode), 10 kHz (USA AM mode) and one channel in WX mode (CH1, CH2, etc.)

Seeking a Station: When the Seek function is activated the radio increments/ decrements the frequency until a tunable station is found. If a tunable station is not found the radio will display "NO STATION FOUND".

Storing Radio Station Presets : Tune the desired frequency, and then long press any of the Preset(1-6) buttons until the radio produces a beep.

Tuning Radio Station Presets: Short press on any of the Preset(1-6) buttons.

SCAN: To initiate the Scan function, short press the SCAN/ASCN button. When SCAN is initiated, the radio seeks up in frequency and stops on the next strong frequency for 8 seconds before continuing to seek for the next strong station.

AUTOSCAN: This function temporally stores the strongest 6 stations of the current band in the presets until the radio is powered off or the source is changed. To initiate the AUTOSCAN function, long press the SCN/ASCN button until the radio performs a beep;

then the "AUTO SCAN" icon will blink while the radio is storing the temporary presets.

SiriusXM®

Vehicles with a valid SiriusXM® satellite radio subscription can receive SiriusXM programming.

Display labels: To easily recognize the displayed text, the radio uses the following convention: Channel Number: CH, Channel Name: CH, Artist Name: ART, Content Info: INFO, Song Title: SONG, Category name: CAT.

SXM Categories To change the current category long press the NEXT/PREV button and the radio will tune the first channel on next or previous category. Category mode Enable/Disabled Category Search Mode Enabled means that only channels in the current Category are searched. When enabled, the CATEGORY icon is turned on. Category Search Mode Disabled means that all channels are searched. When disabled, the CATEGORY icon is turned off.

SXM Radio ID: If tuned to channel 0, "RADIO ID" label alternates with the SXM radio eight-digit code. This code is needed to activate the service.

189

INFOTAINMENT

RADIO

Radio System Settings

Audio Controls Menu

Clock

To adjust the time in the radio, press the knob to show the Audio Control Menu. Rotate the knob until the Clock is shown on the display and press the knob to enter the Clock Menu.

Once in the Clock Menu you can select 12 Hour or 24 Hour format by rotating the knob and pressing it to confirm. Finally after the format configuration and confirmation, adjust the time settings and confirm the changes by pressing the Knob.

Alarm

To set the Alarm press, enter the Audio Control Menu, select Alarm and press the knob. Once in the Alarm Menu, change the ALARM ON/OFF by rotating the knob and pressing the knob to confirm the selection. When the user selects ALARM ON, the Alarm Icon will be set to ON and the following configuration options will be shown:

- **TIME:** The hour digits for the alarm time will begin to flash. The format will be the same as you set for the clock (12 or 24 hour mode). Change by rotating the knob and confirm the

hour and minutes by pressing the knob.

- **SET TONE or SET MUSIC:** Change between SET TONE or SET MUSIC by rotating the knob and pressing the knob.
- **VOLUME:** For Tone change between Low, Mid and High. For Music adjust from 0 to 30.
- **Turning the Alarm Off:** When the alarm is triggered, short press the preset 3 button. If you do not turn the alarm off, it will automatically shut off after 63 minutes.
- **Activating Snooze:** To use SNOOZE, press any button for less than 2 seconds when the alarm sounds, except Preset 3 button. SNOOZE will appear for 3 seconds and the alarm will be postponed for 9 minutes.

User Menu

The User Menu is shown when the Volume knob is pressed for more than 2 seconds. In this menu the user can configure the following options:

- Speakers (SPEAKERS)
- Seek Sensitivity (SEEK SEN)
- Tune Configuration (TUNE CFG)
- Playback Configuration (PLBK CFG)
- Dimming (DIMMING)

- Category Enable/Disable (CAT E/D)
- HUE Adjustment (HUE ADJ)
- Speed Dependent Volume (SPEEDDV)

Playback Configuration (PLBK CFG):

This option is used to configure the Next/Prev Button for the long press functionality (between FF/FR and Folder Up/ Down).The display will show the current selected option SEEK (folder Up/ Down) or FAST F/F. Rotate the knob to change between SEEK or FAST F/F, press the Knob to select the desired option. This option is only available when radio is playing CD, USB or iPod Mode.

Category Enable/Disable (CAT/E/D): The display will show CAT ENABLE or CAT DISABLE depending on the current selection. Rotate the knob to change between the two options and press the Knob to confirm the selection. This option is only available in SXM Mode.

Speed Dependent Volume (SPEEDDV):

User can select between OFF/LOW/MID/HIGH settings. Volume will be increased accordingly in the radio as vehicle speed increases/decreases.

NOTE

The Regulatory notices are listed in the owner's manual located in the following web site.
<http://www.panapacific.com/support>

Media Players**CD Player**

With the vehicle on, insert a disc into the slot, label side up. The system is capable of playing:

Most audio CDs, CD-R and CD-RW, MP3 or unprotected WMA formats.

Folder Up/Down (only available when playing

MP3 CDs and USB devices) Press to select next/Previous Folder, if playing a specific playable scope, when pressing the radio plays track 1 as newly inserted USB.

Music Navigation CD MP3 and USB
 Press the magnifying glass (preset 2) button while CD, MP3 or USB source is active to access the CD MP3/USB Music Menu. Use the Volume Knob or Next/Prev button to navigate through the different options.

The Radio has two Options

Folder Mode: Press the Volume Knob to view the folders stored on the disc.

X Publication_PC28

Select a folder to view the list of all songs in that folder.

Playlist Mode Press the Volume Knob to view the playlists stored on the disc. Select a playlist to start playing the first track in current selected playlist.

Special Considerations

Root Directory: The root directory is treated as a folder. All files contained directly under the root directory are accessed prior to any root directory folders.

Empty Folders: If a root directory or folder is empty or contains only folders, the player advances to the next folder in the file structure that contains a compressed audio file. The empty folder(s) are not displayed or numbered.

iPod

This Radio supports the following iPod models: iPod classic® (6th generation), iPod nano® (6G), iPod touch® (4G), iPhone® (3G, 3GS, 4, and 4S)

Other iPods may be played, but functionality is not guaranteed.

Playing from an iPod

1. Connect one end of the standard iPod USB cable to the iPod's dock connector.
2. Connect the other end to the USB port in the front radio display (it begins to play).

3. Radio will start playing the iPod and shows the track number, Song, Artist, elapsed time, and Album information displays when available.

4. The iPod battery recharges automatically while the vehicle is on.

5. If the iPod is an unsupported model, it can still be listened to in the vehicle by connecting to the auxiliary input jack using a standard 3.5mm (1/8 in) stereo cable.

iPod Menu Press the magnifying glass (preset 2) button while USB source (iPod connected) is active to access the iPod Music Menu. Use the Volume Knob or Next/Prev button to navigate through the different options.

Use the iPod Audio Menu to select: Playlists, Artists, Albums, Genres, Podcasts, Songs, Composers, Audio Books.

USB

A USB mass storage device can be connected to the USB port.

The USB port is in the front of the radio display. Five volts DC power is limited to one-amp from this port. Devices such as iPad that require greater current will not charge from this port.

INFOTAINMENT

RADIO

USB MP3 Player and USB Drives:

The USB MP3 players and USB drives connected must comply with the USB Mass Storage specification.

Front Auxiliary / Rear Auxiliary

In front auxiliary mode, you can play an external device such as an iPod® or MP3 player via the auxiliary input jack on the front of the receiver. To use an external device simply connect the device via the auxiliary input jack.

In rear auxiliary mode, you can play an external device that you have connected via the receiver's rear power auxiliary input lines. To use an external device simply connect the device via the auxiliary input jack and select it using the source button

Bluetooth®

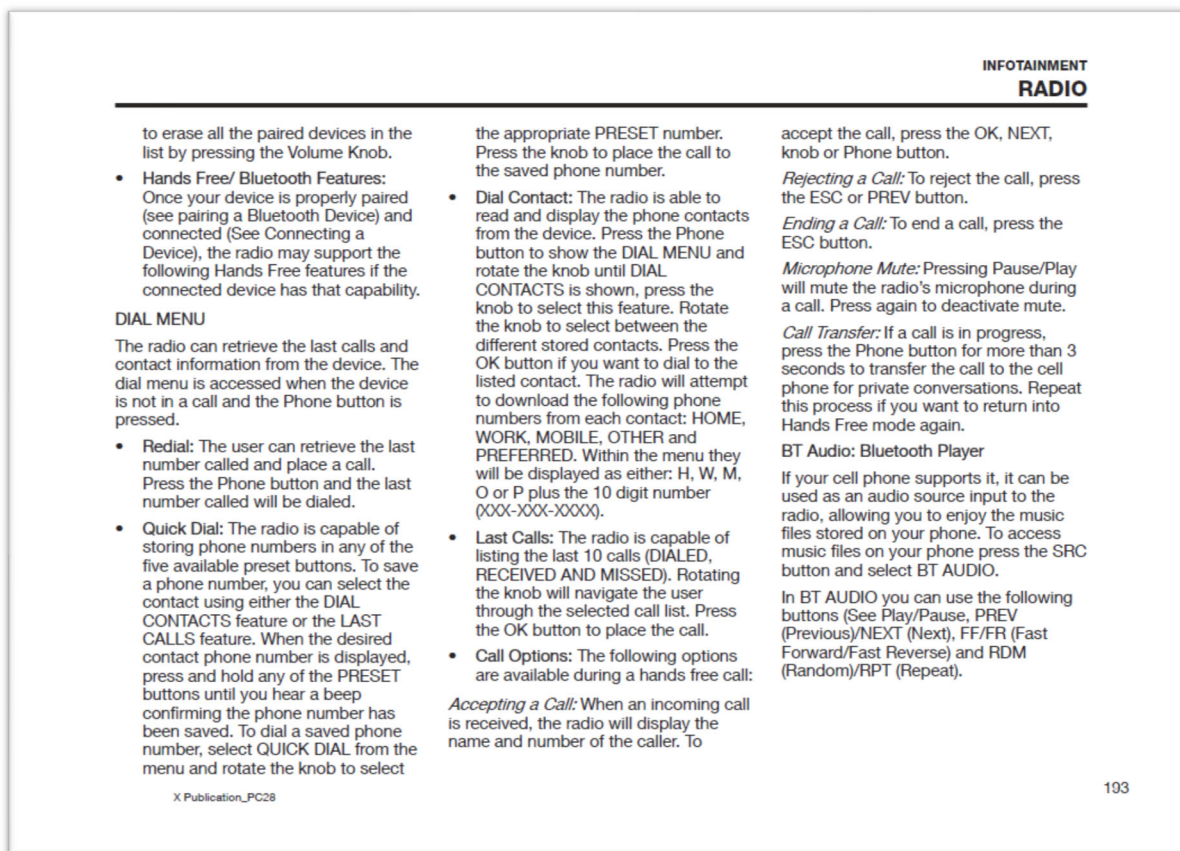
The Bluetooth Menu is available when the Phone button is pressed for more than 3 seconds. To navigate through it, rotate the knob. The Bluetooth Menu consists on the following options:

- BT ENABLE
- CONNECT PH
- DISCONNECT PH
- ADD PHONE

- **DELETE PH** (Some options are only available when a device has been paired previously)
- **Enabling/Disabling Bluetooth:** Enter the BT menu and Rotate the Volume Knob until the display shows: BT Disable or BT Enable. Press the Volume Knob to Enable or Disable the Bluetooth.
- **Pairing a Bluetooth Device:** Enable the BT in the Radio and your device. Enter the BT Menu and Rotate the Volume Knob until the display shows: ADD PHONE, press the volume The radio will display ADDING PH for 3 seconds and the Bluetooth status icon will blink. The radio will be in discoverable mode, set your cell phone to add a Bluetooth device and look for the name "Delphi500 Radio." Follow the instructions on your phone to add a connection. When necessary, use 4 PIN numbers 0000 to connect to the radio. When the cell phone has been successfully added, the radio will display PH CONNECTED for 3 seconds and then the Bluetooth device name for 3 seconds. Phone Icon will be active on the display.
- **Connecting a Device:** If your device was previously paired, you can simply connect to the device: Go to the BT Menu and select CONNECT

PH. The radio will attempt the connection to the selected device. The Phone icon will be active and the arrows icon will flash. When the radio connects, the Bluetooth icon will blink. This signifies that the receiver is attempting to download the cell phone's CONTACTS (for the DIAL CONTACTS function). The icon will cease to blink if all contacts have been downloaded or if the radio times out from receiving contacts from the cell phone device. Phone Icon remains active.

- **Disconnecting a Device:** If your device is currently connected and you require disconnecting it from the radio: Go to the BT Menu, select DISCONNECT PH by pressing the knob, The radio will show DISCONNECT PH for a short time. Once the Phone is disconnected the radio will display DISCONNECTED first and then the Bluetooth device name. The Phone Icon will be inactive.
- **Deleting one or all Devices:** To delete from the radio one or all devices previously paired: Go to the BT Menu, select DELETE PH and press the knob. The radio will show a device list (navigate through it by rotating the knob). Select the device to be deleted or select DELETE ALL



COUNT I (Infringement of the '786 Patent)

18. Paragraphs 1 through 17 are incorporated herein by reference as if fully set forth in their entireties.

19. Blitzsafe has not licensed or otherwise authorized Defendant to make, use, offer for sale, sell, or import any products that embody the inventions of the '786 Patent.

20. Defendant has and continues to directly infringe one or more claims of the '786 Patent, including claim 57, either literally or under the doctrine of equivalents, by making, using, offering to sell, selling, and/or importing into the United States infringing Infotainment Systems without authority and in violation of 35 U.S.C. § 271.

21. Defendant has and continues to indirectly infringe one or more claims of the '786 Patent by knowingly and intentionally inducing others to directly infringe, either literally or under

the doctrine of equivalents, by making, using, offering to sell, selling, and/or importing into the United States the infringing Infotainment Systems. For example, Defendant, with knowledge that the Infotainment Systems infringe the '786 Patent at least as of the date of this Complaint, knowingly and intentionally induced, and continues to knowingly and intentionally induce, direct infringement of the '786 Patent by providing Infotainment Systems user manuals, product manuals, instructional videos, website information, and documentation that instruct end users how to use the Infotainment Systems, including specifically how to connect their external third-party audio and multimedia devices to the vehicle stereo and how to control the external device using the vehicle stereo's controls. Defendant induced infringement by others, including end users, with the intent to cause infringing acts by others or, in the alternative, with the intent to cause infringing acts by other or, in the alternative, with the belief that there was a high probability that others, including end users, infringe the '786 Patent, but while remaining willfully blind to the infringement.

22. Defendant has and continues to indirectly infringe one or more claims of the '786 Patent by contributing to the direct infringement, either literally or under the doctrine of equivalents, by others, including end users, by offering to sell, selling, and/or importing into the United States the infringing Infotainment Systems, with the knowledge, at least as of the date of this Complaint, that the Infotainment Systems contain components that constitute a material part of the inventions claimed in the '786 Patent. Such components include, for example, interfaces that permit an end user to use a car stereo's controls to control an external third party audio device and multimedia device. Defendant knows that these components are especially made or especially adapted for use in an infringement of the '786 Patent and that these components are not a staple article or commodity of commerce suitable for substantial non-infringing use. Alternatively,

Defendant believed there was a high probability that others would infringe the '786 Patent, but remained willfully blind to the infringing nature of others' actions.

23. Blitzsafe has suffered damages as a result of Defendant's direct and indirect infringement of the '786 Patent in an amount to be proved at trial.

24. Blitzsafe has suffered, and will continue to suffer, irreparable harm as a result of Defendant's infringement of the '786 Patent for which there is no adequate remedy at law, unless Defendant's infringement is enjoined by this Court.

25. Defendant has committed and continues to commit acts of infringement that Defendant actually knew or should have known constituted an unjustifiably high risk of infringement of at least one valid and enforceable claim of the '786 Patent. Upon information and belief, Defendant had actual knowledge of the '786 Patent from prior litigations accusing products made by Infotainment System suppliers of Defendant and prior litigation in which Infotainment Systems suppliers of Defendant were involved as third parties. Defendant's infringement of the '786 Patent has been and continues to be willful, entitling Blitzsafe to an award of treble damages, reasonable attorney fees, and costs in bringing this action.

COUNT II
(Infringement of the '342 Patent)

26. Paragraphs 1 through 17 are incorporated herein by reference as if fully set forth in their entireties.

27. Blitzsafe has not licensed or otherwise authorized Defendant to make, use, offer for sale, sell, or import any products that embody the inventions of the '342 Patent.

28. Defendant has and continues to directly infringe one or more claims of the '342 Patent, including claim 49, either literally or under the doctrine of equivalents, by making, using,

offering to sell, selling, and/or importing into the United States infringing Infotainment Systems without authority and in violation of 35 U.S.C. § 271.

29. Defendant has and continues to indirectly infringe one or more claims of the '342 Patent by knowingly and intentionally inducing others to directly infringe, either literally or under the doctrine of equivalents, by making, using, offering to sell, selling, and/or importing into the United States the infringing Infotainment Systems. For example, Defendant, with knowledge that the Infotainment Systems infringe the '342 Patent, at least as of the date of this Complaint, knowingly and intentionally induced, and continues to knowingly and intentionally induce, direct infringement of the '342 Patent by providing Infotainment System operating manuals, product manuals, instructional videos, website information, and documentation that instruct end users how to use the Infotainment Systems, including specifically how to connect external third-party audio and multimedia devices to the vehicle stereo and how to control the external device using the vehicle stereo's controls. Defendant induced infringement by others, including end users, with the intent to cause infringing acts by others or, in the alternative, with the belief that there was a high probability that others, including end users, infringe the '342 Patent, but while remaining willfully blind to the infringement.

30. Defendant has and continues to indirectly infringe one or more claims of the '342 Patent by contributing to the direct infringement, either literally or under the doctrine of equivalents, by others, including end users, by offering to sell, selling, and/or importing into the United States infringing Infotainment Systems, with the knowledge, at least as of the date of this Complaint, that the Infotainment Systems contain components that constitute a material part of the inventions claimed in the '342 Patent. Such components include, for example, interfaces that permit an end user to use a vehicle stereo's controls to control an external third-party audio device.

Defendant knows that these components are especially made or especially adapted for use in an infringement of the '342 Patent and that these components are not a staple article or commodity of commerce suitable for substantial non-infringing use. Alternatively, Defendant believed there was a high probability that others would infringe the '342 Patent, but remained willfully blind to the infringing nature of others' actions.

31. Blitzsafe has suffered damages as a result of Defendant's direct and indirect infringement of the '342 Patent in an amount to be proved at trial.

32. Blitzsafe has suffered, and will continue to suffer, irreparable harm as a result of Defendant's infringement of the '342 Patent for which there is no adequate remedy at law, unless Defendant's infringement is enjoined by this Court.

33. Defendant has committed and continues to commit acts of infringement that Defendant actually knew or should have known constituted an unjustifiably high risk of infringement of at least one valid and enforceable claim of the '342 Patent. Upon information and belief, Defendant had actual knowledge of the '342 Patent from prior litigations accusing products made by Infotainment System suppliers of Defendant and prior litigations in which Infotainment System suppliers of Defendant were involved as third parties. Defendant's infringement of the '342 Patent has been and continues to be willful, entitling Blitzsafe to an award of treble damages, reasonable attorney fees, and costs in bringing this action.

DEMAND FOR JURY TRIAL

Plaintiff hereby demands a jury for all issues so triable.

PRAYER FOR RELIEF

WHEREFORE, Blitzsafe prays for relief against Defendant as follows:

- a. Entry of judgment declaring that Defendant have directly and/or indirectly

infringed one or more claims of each of the patents-in-suit;

b. Entry of judgment declaring that Defendant's infringement of the patents-in-suit has been willful and deliberate;

c. An order pursuant to 35 U.S.C. § 283 permanently enjoining Defendant, its officers, agents, servants, employees, attorneys, and those persons in active concert or participation with them, from further acts of infringement of the patents-in-suit;

d. An order awarding damages sufficient to compensate Blitzsafe for Defendant's infringement of the patents-in-suit, but in no event less than a reasonable royalty, together with interest and costs;

e. An order awarding Blitzsafe treble damages under 35 U.S.C. § 284 as a result of Defendant's willful and deliberate infringement of the patents-in-suit;

f. Entry of judgment declaring that this case is exceptional and awarding Blitzsafe its costs and reasonable attorney fees under 35 U.S.C. § 285; and

g. Such other and further relief as the Court deems just and proper.

Dated: May 12, 2021

Respectfully submitted,

/s/ Alfred R. Fabricant

Alfred R. Fabricant

NY Bar No. 2219392

Email: afabricant@fabricantllp.com

Peter Lambrianakos

NY Bar No. 2894392

Email: plambrianakos@fabricantllp.com

Vincent J. Rubino, III

NY Bar No. 4557435

Email: vrubino@fabricantllp.com

FABRICANT LLP

411 Theodore Fremd Road, Suite 206 South
Rye, NY 10580

Telephone: (212) 257-5797

Facsimile: (212) 257-5796

Samuel F. Baxter
Texas State Bar No. 01938000
sbaxter@mckoolsmith.com
Jennifer L. Truelove
Texas State Bar No. 24012906
jtruelove@mckoolsmith.com
MCKOOL SMITH, P.C.
104 E. Houston Street, Suite 300
Marshall, Texas 75670
Telephone: (903) 923-9000
Facsimile: (903) 923-9099

**ATTORNEYS FOR PLAINTIFF,
BLITZSAFE TEXAS, LLC**