

**IN THE UNITED STATES DISTRICT COURT  
FOR THE EASTERN DISTRICT OF PENNSYLVANIA**

**DISPLAY TECHNOLOGIES, LLC,**

**Plaintiff,**

vs.

**OLYMPUS CORPORATION OF THE  
AMERICAS,**

**Defendant.**

§  
§  
§  
§  
§  
§  
§  
§  
§  
§

**Case No:**

**PATENT CASE**

**COMPLAINT**

Plaintiff Display Technologies, LLC (“Plaintiff” or “Display”) files this Complaint against Olympus Corporation of the Americas (“Defendant” or “Olympus”) for infringement of United States Patent No. 9,300,723 (the “723 Patent”).

**PARTIES AND JURISDICTION**

1. This is an action for patent infringement under Title 35 of the United States Code. Plaintiff is seeking injunctive relief as well as damages.

2. Jurisdiction is proper in this Court pursuant to 28 U.S.C. §§ 1331 (Federal Question) and 1338(a) (Patents) because this is a civil action for patent infringement arising under the United States patent statutes.

3. Plaintiff is a Texas limited liability company with an address of 1 East Broward Boulevard, Suite 700, Ft. Lauderdale, FL 33301.

4. On information and belief, Defendant is a New York corporation with a principal place of business at 3500 Corporate Parkway, Center Valley, PA 18034-0610. On information and belief, Defendant may be served through its registered agent, Corporation Service Company,

Tax Department Olympus America, 3500 Corporate Parkway, Center Valley, PA, United States, 18034.

5. This Court has personal jurisdiction over Defendant because Defendant has committed, and continues to commit, acts of infringement in this District, has conducted business in this District, and/or has engaged in continuous and systematic activities in this District.

6. Upon information and belief, Defendant's instrumentalities that are alleged herein to infringe were and continue to be used, imported, offered for sale, and/or sold in this District.

**VENUE**

7. On information and belief, venue is proper in this District under 28 U.S.C. § 1400(b) because Defendant is a resident of this District. Alternatively, acts of infringement are occurring in this District and Defendant has a regular and established place of business in this District.

**COUNT I**  
**(INFRINGEMENT OF UNITED STATES PATENT NO. 9,300,723)**

8. Plaintiff incorporates paragraphs 1 through 7 herein by reference.

9. This cause of action arises under the patent laws of the United States and, in particular, under 35 U.S.C. §§ 271, *et seq.*

10. Plaintiff is the owner by assignment of the '723 Patent with sole rights to enforce the '723 Patent and sue infringers.

11. A copy of the '723 Patent, titled "Enabling social interactive wireless communications," is attached hereto as Exhibit A.

12. The '723 Patent is valid, enforceable, and was duly issued in full compliance with Title 35 of the United States Code.

13. Defendant has infringed and continues to infringe one or more claims, including at least Claim 1 of the '723 Patent by making, using, and/or selling media systems covered by one or more claims of the '723 Patent. For example, Defendant makes, uses, and/or sells the Olympus Image Share system, OI.Share app, associated software, hardware and/or apps, and any similar products ("Product"). Defendant has infringed and continues to infringe the '723 Patent in violation of 35 U.S.C. § 271.

14. Regarding Claim 1, the Product is a media system. The Product includes a media system (e.g., platform configured to allow a user to view a media file (e.g., camera photo) taken by the Product's camera by using a media terminal (e.g., smartphone) over a communication network (e.g., Bluetooth network) through a communication link. Certain aspects of this element are illustrated in the screenshots below and/or those provided in connection with other allegations herein.



Source: <https://app.olympus-imaging.com/oishare/en/>



Source: <https://play.google.com/store/apps/details?id=jp.olympusimaging.oishare>

Olympus Image Share (OI.Share) is an app required for wirelessly importing photos captured on an Olympus camera. In addition to importing photos, you can use your smartphone as a remote controller for remote shooting. This smartphone app makes photography more enjoyable than ever, and offers new ways to use your camera.

Source: <https://app.olympus-imaging.com/oishare/en/>

## Easily Import Photos to Your Smartphone

With OI.Share, you can view photos stored on the camera and import them to your smartphone. Simply select photos you want to share ahead of time on the camera (Share Order) to automatically import them when connected to your smartphone via Wi-Fi. With a Bluetooth and Wi-Fi ready camera, you can use OI.Share on its own to import photos for greater convenience.

Source: <https://app.olympus-imaging.com/oishare/en/>

15. The Product includes at least one media terminal disposed in an accessible relation to at least one interactive computer network. For example, the Bluetooth network is used for sending camera photos by detecting a smartphone (at least one media terminal) when the Product's app is installed on the smartphone and connected with the Product's camera through a Bluetooth network (i.e., the smartphone is in an accessible relationship with the interactive computer network). Certain aspects of this element are illustrated in the screenshots below and/or in those provided in connection with other allegations herein.



Source: <https://app.olympus-imaging.com/oishare/en/>

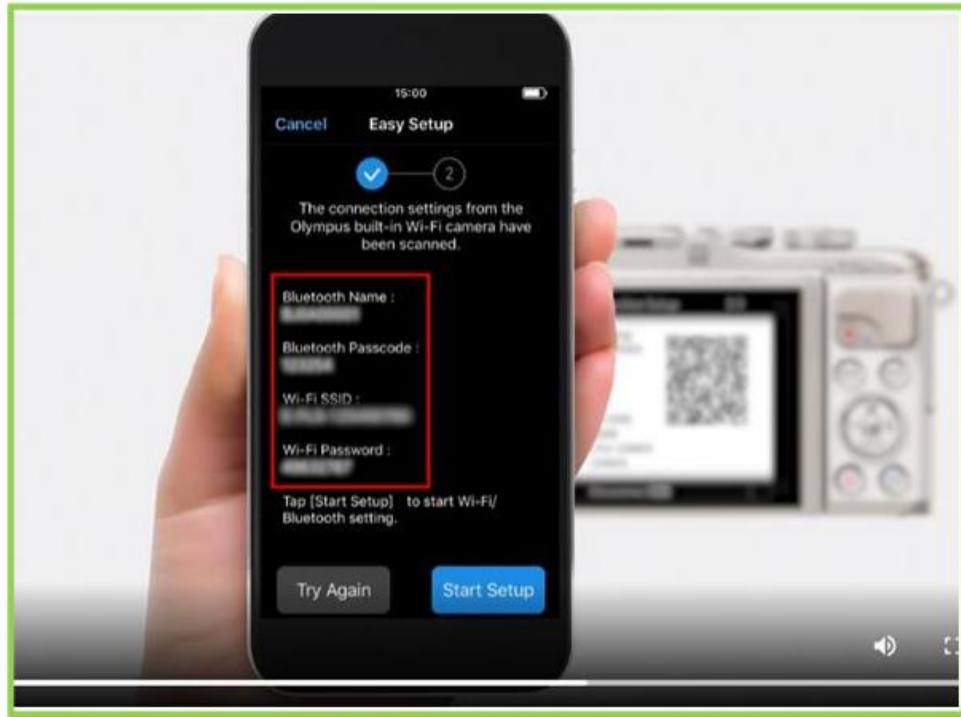
## Easily Import Photos to Your Smartphone

With OI.Share, you can view photos stored on the camera and import them to your smartphone. Simply select photos you want to share ahead of time on the camera (Share Order) to automatically import them when connected to your smartphone via Wi-Fi. With a Bluetooth and Wi-Fi ready camera, you can use OI.Share on its own to import photos for greater convenience.

Source: <https://app.olympus-imaging.com/oishare/en/>

16. A wireless range is structured to permit authorized access to the at least one interactive computer network. For example, the Bluetooth signals of the Product's camera have a range within which the smartphone (media terminal) may connect.

17. At least one media node is disposable within the wireless range, wherein the at least one media node is detectable by the at least one media terminal. For example, the Product's camera (media node) is detectable by the media terminal (smartphone). Certain aspects of this element are illustrated in the screenshots below and/or those provided in connection with other allegations herein.



Source: <https://app.olympus-imaging.com/oishare/en/>

18. At least one digital media file is initially disposed on at least one of the at least one media terminal or the at least one media node and the at least one media terminal is structured to detect the at least one media node disposed within the wireless range. For example, the photo is initially disposed on the media node (camera's Bluetooth module) and the media terminal can detect the Bluetooth module when it is within the appropriate range.

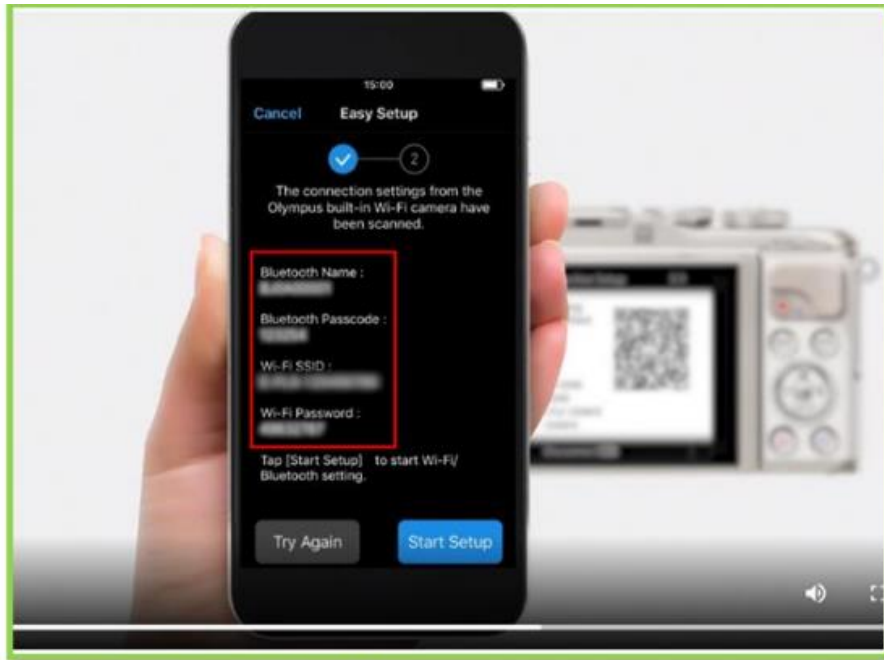
19. A communication link is structured to dispose the at least one media terminal and the at least one media node in a communicative relation with one another via the at least one interactive computer network. For example, the smartphone and Bluetooth module are in a communicative relation over the Bluetooth network.

20. The communication link is initiated by the at least one media terminal. For example, when the user turns on Bluetooth on the smartphone (media terminal), the smartphone initiates the communication link.

21. The at least one media node and the at least one media terminal are structured to

transmit the at least one digital media file therebetween via the communication link. For example, the smartphone/app and the Bluetooth module of the Product's camera are structured to transmit a photo from the camera to the smartphone over the wireless network.

22. The communication link is structured to bypass at least one media terminal security measure for a limited permissible use of the communication link by the media node to only transferring the at least one digital media file to, and displaying the at least one digital media file on, the at least one media terminal. For example, once the camera and smartphone are connected, the communication link is structured so that whenever the user installs the Product's app on the smartphone (media terminal), the smartphone automatically connects (bypassing any security measures) with the Product's camera through Bluetooth code (i.e., media terminal security) whenever the smartphone comes to the range of the Bluetooth signals (for the limited purpose of transferring images from the camera to the smartphone).



Source: <https://app.olympus-imaging.com/oishare/en/>



Source: <https://app.olympus-imaging.com/oishare/en/>



## Easily Import Photos to Your Smartphone

With OI.Share, you can view photos stored on the camera and import them to your smartphone. Simply select photos you want to share ahead of time on the camera (Share Order) to automatically import them when connected to your smartphone via Wi-Fi. With a Bluetooth and Wi-Fi ready camera, you can use OI.Share on its own to import photos for greater convenience.

Source: <https://app.olympus-imaging.com/oishare/en/>

## Dedicated smartphone app for greater photo enjoyment

With Wi-Fi and Bluetooth® built into the camera body, the dedicated smartphone app OI.Share can be used to easily and instantly import recorded photos and videos to a smartphone or for sharing on social media. Those who wish to may can also use the connected smartphone for Bluetooth remote shooting. Camera instructions and tutorials are available in the app for learning shooting methods and techniques.

Source: <https://www.olympus-europa.com/company/en/news/press-releases/2020-08-04!07-50-00/shoot.-share.-inspire.-olympus-om-d-e-m10-mark-iv-27328.html>

23. Defendant's actions complained of herein will continue unless Defendant is enjoined by this court.

24. Defendant's actions complained of herein are causing irreparable harm and monetary damage to Plaintiff and will continue to do so unless and until Defendant is enjoined and restrained by this Court.

25. Plaintiff is in compliance with 35 U.S.C. § 287.

### **PRAYER FOR RELIEF**

WHEREFORE, Plaintiff asks the Court to:

(a) Enter judgment for Plaintiff on this Complaint on all causes of action asserted herein;

(b) Enter an Order enjoining Defendant, its agents, officers, servants, employees, attorneys, and all persons in active concert or participation with Defendant who receive notice

of the order from further infringement of United States Patent No. 9,300,723 (or, in the alternative, awarding Plaintiff running royalties from the time of judgment going forward);

(c) Award Plaintiff damages resulting from Defendant's infringement in accordance with 35 U.S.C. § 284;

(d) Award Plaintiff pre-judgment and post-judgment interest and costs; and

(e) Award Plaintiff such further relief to which the Court finds Plaintiff entitled under law or equity.

Dated: July \_\_\_, 2021

Respectfully submitted,

*/s/draft*

\_\_\_\_\_  
Licardo E. Gwira  
200 Walt Whitman Ave.  
Mt. Laurel, NJ 08054  
LicardoLegal@outlook.com

**ATTORNEYS FOR PLAINTIFF**