

Kristine L. Butler, Esquire  
VOLPE AND KOENIG, P.C.  
One Palmer Square  
Suite 315  
Princeton, NJ 08542  
Phone: (609) 924-7900  
Fax: (609) 924-7902

Michael F. Snyder, Esquire  
Ryan W. O'Donnell, Esquire  
VOLPE AND KOENIG, P.C.  
United Plaza  
30 South 17<sup>th</sup> Street  
Philadelphia, Pennsylvania 19103  
Phone: (215) 568-6400  
Fax: (215) 568-6499

*Attorneys for Plaintiff  
Lottotron, Inc.*

**IN THE UNITED STATES DISTRICT COURT  
FOR THE DISTRICT OF NEW JERSEY  
NEWARK DIVISION**

<p>LOTTOTRON, INC., a New Jersey Corporation, Plaintiff,</p> <p>v.</p> <p>TELEPUBLICIDAD, S.A., VIRTUAL CASINO GROUP, JEUX VIRTUELS, S.A., DULCE VIDA DE LAS AMERICAS, S.A., WEAVERVILLE INC., S.A., AZUL ELECTRICO, S.A., and ALA DATA MANAGEMENT, S.A., all Costa Rican Corporations, Defendants.</p>	<p>Civil Action No. 2:10-cv-00337 (SRC)(MAS)</p> <p>Hon. Stanley R. Chesler, U.S.D.J. Hon Michael A. Shipp, U.S.M.J.</p> <p>ELECTRONICALLY FILED</p>
---	--

**SECOND AMENDED COMPLAINT**

Now comes the plaintiff, Lottotron, Inc. ("Lottotron"), and alleges by way of complaint against defendants Telepublicidad, S.A. ("Telepublicidad"), Virtual

Casino Group (“VCG”), Jeux Virtuels, S.A. (“Jeux Virtuels”), Dulce Vida de las Americas, S.A. (“Dulce Vida”), Weaverville Inc., S.A. (“Weaverville”), Azul Electrico, S.A. (“Azul Electrico”), and Ala Data Management, S.A. (“Ala Data”), as follows:

### **PARTIES**

1. Lottotron is a New Jersey corporation, having a principal place of business located at 207 Lodi Street, Hackensack, New Jersey 07601-3916.

2. Upon information and belief, defendant Telepublicidad is a company organized under the laws of Costa Rica, Costa Rican Corporate ID# 3-101-210843, having a principal place of business at Zona Franca Saret, Edificio A8. Alajuela, Costa Rica.

3. Upon information and belief, defendant VCG is a company organized under the laws of Costa Rica, having a principal place of business at Oficentro La sabana, Edificio 7, Piso 7, San José, Costa Rica.

4. Upon information and belief, defendant Jeux Virtuels is a company organized under the laws of Costa Rica, Costa Rican Corporate ID# 3-101-368756, having a place of business at Box 439, 7801 N.W. 37th Street, Miami, Florida 33166.

5. Upon information and belief, defendant Ala Data, is a company organized under the laws of Costa Rica, Costa Rican Corporate ID# 3-101-310310, having a principal place of business at San Pedro de Montes de Oca, from Plaza Roosevelt, 300 meters south, blue building, second floor, Costa Rica.

6. Upon information and belief, defendant Dulce Vida is a company organized under the laws of Costa Rica, Costa Rican Corporate ID# 3-101-305882, having a principal place of business at Calle 3 entre avenidas 6 y 8, no. 652, San Jose, San José, Costa Rica.

7. Upon information and belief, defendant Weaverville is a company organized under the laws of Costa Rica, Costa Rican Corporate ID# 3-101-339202, having a principal place of business at Plaza Country, Edificio 2, Local 10, Ecazu, Costa Rica.

8. Upon information and belief, defendant Azul Electrico is a company organized under the laws of Costa Rica, Costa Rican Corporate ID# 3-101-251194, having a principal place of business 200 metros norte y 200 metros noroeste del Centro Comercial Los Colegios, Casa No. 23, Moravia, San José, Costa Rica.

### **JURISDICTION AND VENUE**

9. This Court has subject matter jurisdiction under 28 U.S.C. § 1338(a).

10. Telepublicidad in conjunction with SBG Online Casino operates the Sbgglobal.com website. Through that interactive website, Telepublicidad offers a multiple-game, on-line wagering format in this Judicial District and elsewhere.

11. VCG operates the Cirrus Casino, Club Player Casino, Cool Cat Casino, Palace of Chance, Wild Vegas Casino, Bingo Knights, Big Bonus Bingo, and Planet 7 Casino websites. Through these interactive websites, VCG offers a multiplegame, on-line wagering format in this Judicial District and elsewhere.

12. Jeux Virtuels operates the islandcasino.com website. Through that interactive website, Jeux Virtuels offers a multiple-game, on-line wagering format in this Judicial District and elsewhere.

13. Ala Data operates the SlotsPlus Casino, Las Vegas USA Casino, Sun Palace Casino, Cyberland Online, and vegasred.com websites. Through these interactive websites, Ala Data offers a multiple-game, on-line wagering format in this Judicial District and elsewhere.

14. Dulce Vida operates the Monte Casino and Casino Solera websites. Through those interactive websites, Dulce Vida offers multiple-game, on-line wagering formats in this Judicial District and elsewhere.

15. Weaverville operates the Casino33 and Playfair Casino websites. Through these interactive websites, Weaverville offers multiple-game, on-line wagering formats in this Judicial District and elsewhere.

16. Azul Electrico operates the Worldwide Vegas Casino website. Through that interactive website, Azul Electrico offers multiple-game, on-line wagering formats in this Judicial District and elsewhere.

17. Venue is proper in this Judicial District pursuant to 28 U.S.C. § 1400.

#### **COUNT I – PATENT INFRINGEMENT**

18. Lottotron hereby incorporates by reference the allegations contained in paragraphs 1-17, above.

19. Lottotron is the owner by assignment of U.S. Patent No. 5,921,865, entitled Computerized Lottery Wagering System (“the ‘865 patent”). A copy of the patent-in-suit is attached hereto as Exhibit A.

20. Lottotron is asserting infringement of at least independent claims 5 and 8 of the ‘865 patent.

21. Claim 5 of the ‘865 patent reads:

A computer wagering system for automatically accepting wagers, comprising:

a) communications means for receiving incoming communications for making a wager;

b) message means connected to said communications means for receiving said incoming communications routed from said communications means and for providing a series of messages requesting subscriber wagering information particular to one of the plurality of wagering formats; and

c) computer means having storage means connected to said message means for receiving and storing said subscriber wagering information.

22. The following chart shows how the defendants’ accused websites, as of March 2010, when the ‘865 patent expired, satisfied each limitation of claim 5:

<b>LIMITATION</b>	<b>CORRESPONDENT</b>
A computer wagering system for automatically accepting wagers, comprising:	Each of the defendants’ websites has a server that hosts the subject website which allows wagerers to place wagers automatically via such website.
communications means for receiving incoming communications for making a wager	Each of the defendants provide for a mechanism for receiving communications from wagerers desiring to place a wager on such websites. The Preferred Embodiments of the ‘865 patent include the teaching that “[t]he system may also be accessed over the Internet where the system adopts an Internet address and subscriber identification encoding to control access.”

<p>message means connected to said communications means for receiving said incoming communications routed from said communications means and for providing a series of messages requesting subscriber wagering information particular to one of the plurality of wagering formats</p>	<p>Each of the defendants’ websites offer a variety of games of chance, which are equivalent to “wagering formats,” as literally defined by this Court, as such games are insubstantially different from the “types of lottery games that are typically available.” The defendants’ accused websites provide a mechanism by which incoming messages are routed according to the type of game a wagerer chooses to play. For example, a wagerer’s communication indicating a desire to play roulette would be directed to the roulette interface, as opposed to the blackjack interface, and the wagerer would be requested to input wagering information specific to roulette (e.g., a wager on “red numbers”) as opposed to wagering information specific to blackjack (e.g., a decision to split like cards).</p>
<p>computer means having storage means connected to said message means for receiving and storing said subscriber wagering information.</p>	<p>The defendants’ respective servers hosting such websites have a memory for receiving and storing the information from the wagerer in order to process such information.</p>

23. Claim 8 of the ‘865 patent reads:

Method for automatically accepting a plurality of different wagering formats over a computer system, comprising:

receiving incoming communications from prospective wagerers and routing each of said communications according to which one of said plurality of different wagering formats is requested by a subscriber;

providing a series of messages requesting subscriber wagering information particular to one or more of said plurality of wagering formats;

requesting identification information from said prospective wagerers; and

requesting said prospective wagerers to enter a wager.

24. The following chart shows how the defendants' accused websites, as of March 2010, when the '865 patent expired, satisfied each limitation of claim 8:

<b>LIMITATION</b>	<b>CORRESPONDENT</b>
Method for automatically accepting a plurality of different wagering formats over a computer system, comprising	Each of the defendants' websites has a server that hosts the subject website which allows wagerers to place wagers automatically via such website.
receiving incoming communications from prospective wagerers and routing each of said communications according to which one of said plurality of different wagering formats is requested by a subscriber;	<p>Each of the defendants provide for a mechanism for receiving communications from wagerers desiring to place a wager on such websites. The Preferred Embodiments of the '865 patent include the teaching that "[t]he system may also be accessed over the Internet where the system adopts an Internet address and subscriber identification encoding to control access."</p> <p>Each of the defendants' websites offer a variety of games of chance, which are equivalent to "wagering formats," as literally defined by this Court, as such games are insubstantially different from the "types of lottery games that are typically available." The defendants' accused websites provide a mechanism by which incoming messages are routed according to the type of game a wagerer chooses to play. For example, a wagerer's communication indicating a desire to play roulette would be directed to the roulette interface, as opposed to the blackjack interface.</p>
providing a series of messages requesting subscriber wagering information particular to one or more of said plurality of wagering formats;	The wagerer would receive messages from defendants' websites that request the wagerer to input wagering information specific to a game such as roulette (e.g., a wager on "red numbers") as opposed to wagering information specific to blackjack (e.g., a decision to split like cards).

requesting identification information from said prospective wagerers; and	The defendants' websites each ask wagerers to complete a profile seeking information designed to identify the wagerer, including name and address.
requesting said prospective wagerers to enter a wager.	The defendants' websites each ask wagerers to place a wager on the game(s) they select to play.

25. The defendants' operation of their afore-identified interactive gaming websites directly infringes the claims of the '865 patent in violation of 35 U.S.C. § 271(a).

### PRAYERS FOR RELIEF

WHEREFORE, Lottotron respectfully requests the following relief:

1. That the defendants be found by this Court to infringe the '865 patent;
2. That the defendants, their agents, officers, sales representatives, servants, employees, representatives, associates, attorneys, successors and assigns, and any and all persons or entities acting by, through, under, or in concert, privity or in participation with, any or all of them, be permanently enjoined by Order of this Court from doing, abiding, causing, aiding or abetting any of the following:
  - (a) directly or indirectly infringing, or inducing or causing any person or entity to infringe the '865 patent; or
  - (b) from assisting, aiding or abetting any other person or entity from engaging in or performing any of the above-described acts.
3. That the Court award Lottotron its damages in accordance with 35 U.S.C. § 284;
4. That the Court award Lottotron its costs, including attorneys' fees, and an assessment of interest;



5. That the Court grant such other and further relief as it deems just and proper.

**JURY DEMANDED**

Lottotron hereby demands a trial by jury on all issues so triable.

Respectfully submitted,

Dated: April 1, 2011

By: s/ Kristine L. Butler  
Kristine L. Butler, Esquire  
VOLPE AND KOENIG, P.C.  
One Palmer Square  
Suite 315  
Princeton, NJ 08542  
Phone: (609) 924-7900  
Fax: (609) 924-7902  
[kbutler@vklaw.com](mailto:kbutler@vklaw.com)

*Attorneys for Plaintiff  
Lottotron, Inc.*

OF COUNSEL:

George C. Summerfield, Esquire  
STADHEIM & GREAR, LTD.  
400 North Michigan Avenue, Suite 2200  
Chicago, Illinois 60611  
Telephone: (312) 755-4400  
Facsimile: (312) 755-4408  
Email: [summerfield@stadheimgrear.com](mailto:summerfield@stadheimgrear.com)

# EXHIBIT A



US005921865A

**United States Patent** [19]

[11] **Patent Number:** **5,921,865**

**Scagnelli et al.**

[45] **Date of Patent:** **\*Jul. 13, 1999**

[54] **COMPUTERIZED LOTTERY WAGERING SYSTEM**

4,815,741	3/1989	Small	463/17
4,842,278	6/1989	Markowicz	463/18
4,969,183	11/1990	Reese	463/18
5,415,416	5/1995	Scagnelli et al.	463/17

[75] Inventors: **John B. Scagnelli**, Homdel; **Joseph A. Fiscella**, Maywood, both of N.J.

**FOREIGN PATENT DOCUMENTS**

[73] Assignee: **Lottotron, Inc.**, Hackensack, N.J.

1 162 336 2/1984 Canada .

[\*] Notice: This patent is subject to a terminal disclaimer.

**OTHER PUBLICATIONS**

[21] Appl. No.: **09/115,774**

Documents regarding Amtote's Automated Telephone Betting System.

[22] Filed: **Jul. 14, 1998**

*Primary Examiner*—Jessica J. Harrison  
*Assistant Examiner*—Mark A Sager  
*Attorney, Agent, or Firm*—Pennie & Edmonds LLP

**Related U.S. Application Data**

[63] Continuation of application No. 08/781,609, Jan. 16, 1997, Pat. No. 5,816,919.

[57] **ABSTRACT**

[51] **Int. Cl.<sup>6</sup>** ..... **A63F 9/22**; H04M 11/06

A wagering system for accepting wagers over communications systems comprising: (a) automatic call director means (ACD) for receiving incoming messages from subscribers who wish to wager on the system; b) message means (wagering VRU) connected thereto for receiving the incoming messages routed from the ACD, and for playing a series of recorded audio messages requesting subscriber wager information to be input via telecommunications means; and (c) host processor means having storage means and being connected to the wagering VRU for receiving the subscriber wager information, storing it in a master subscriber wager file in the storage means, and assigning an associated ticket number to the wager.

[52] **U.S. Cl.** ..... **463/17**; 463/41; 379/93.13; 379/93.03; 273/139

[58] **Field of Search** ..... 463/1, 16-18, 463/25-31, 36, 40-42; 364/410.1, 412.1; 273/138.1, 138.2, 139, 236-238, 269, 274; 379/90.01, 93.01, 93.02, 93.03, 93.13

[56] **References Cited**

**U.S. PATENT DOCUMENTS**

4,322,612	3/1982	Lange	463/28
4,669,730	6/1987	Small	463/17
4,713,837	12/1987	Gordon	379/93

**26 Claims, 18 Drawing Sheets**

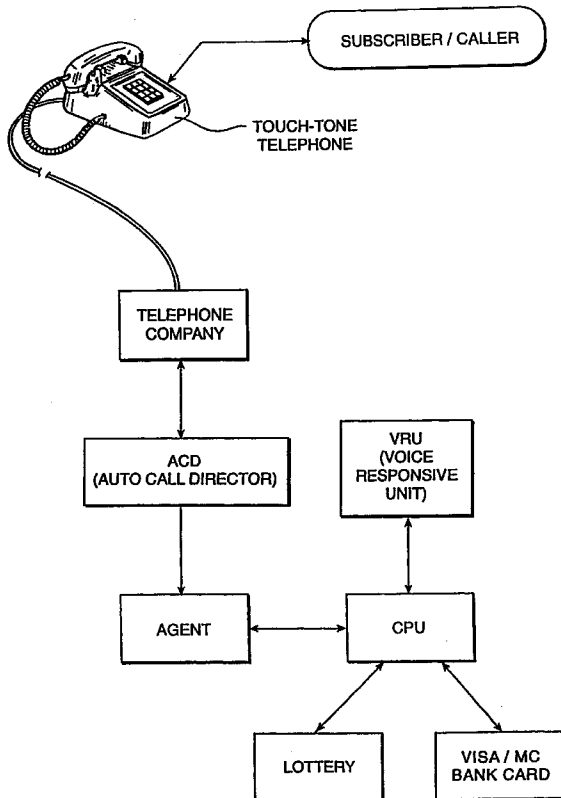


FIG 1

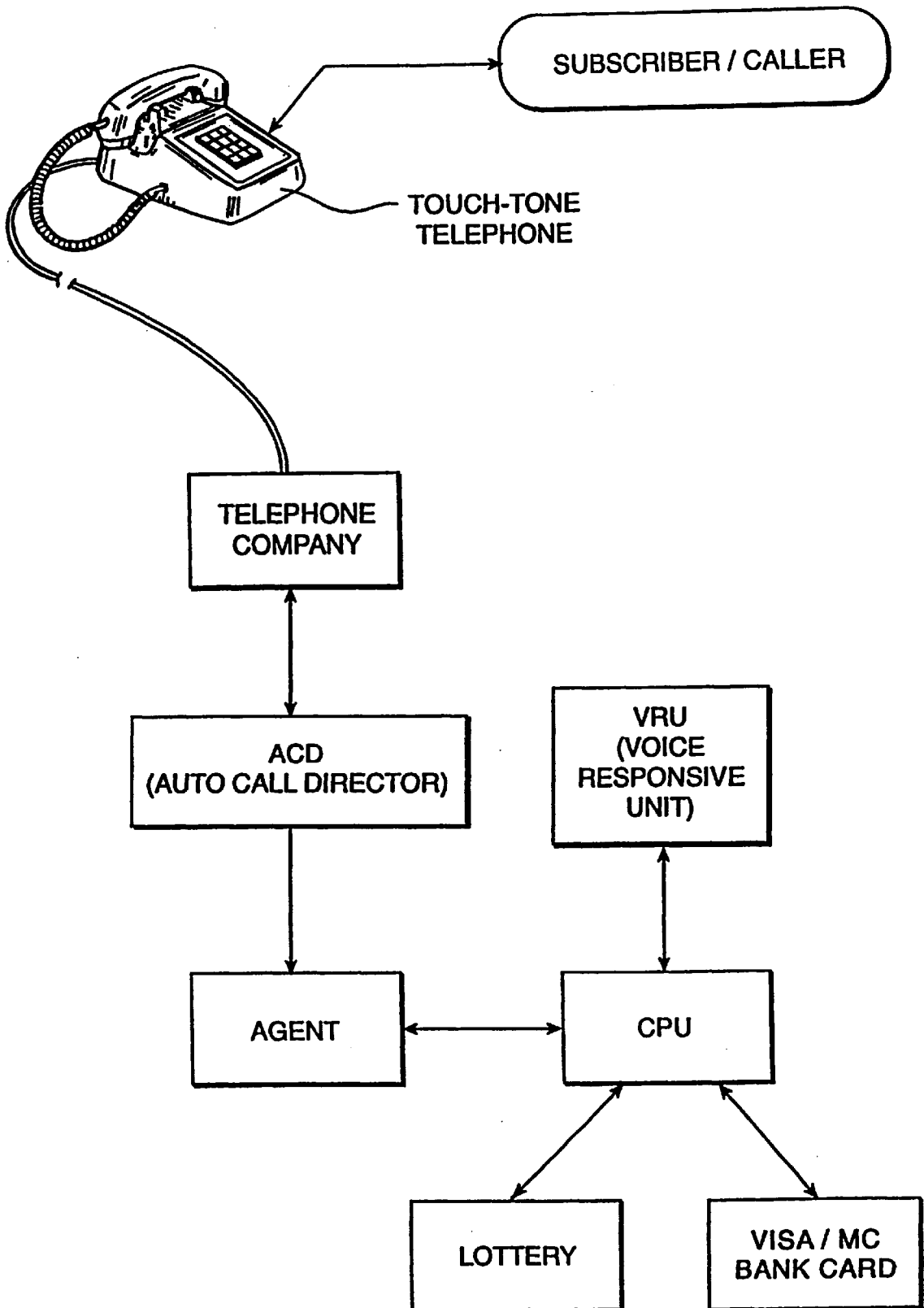
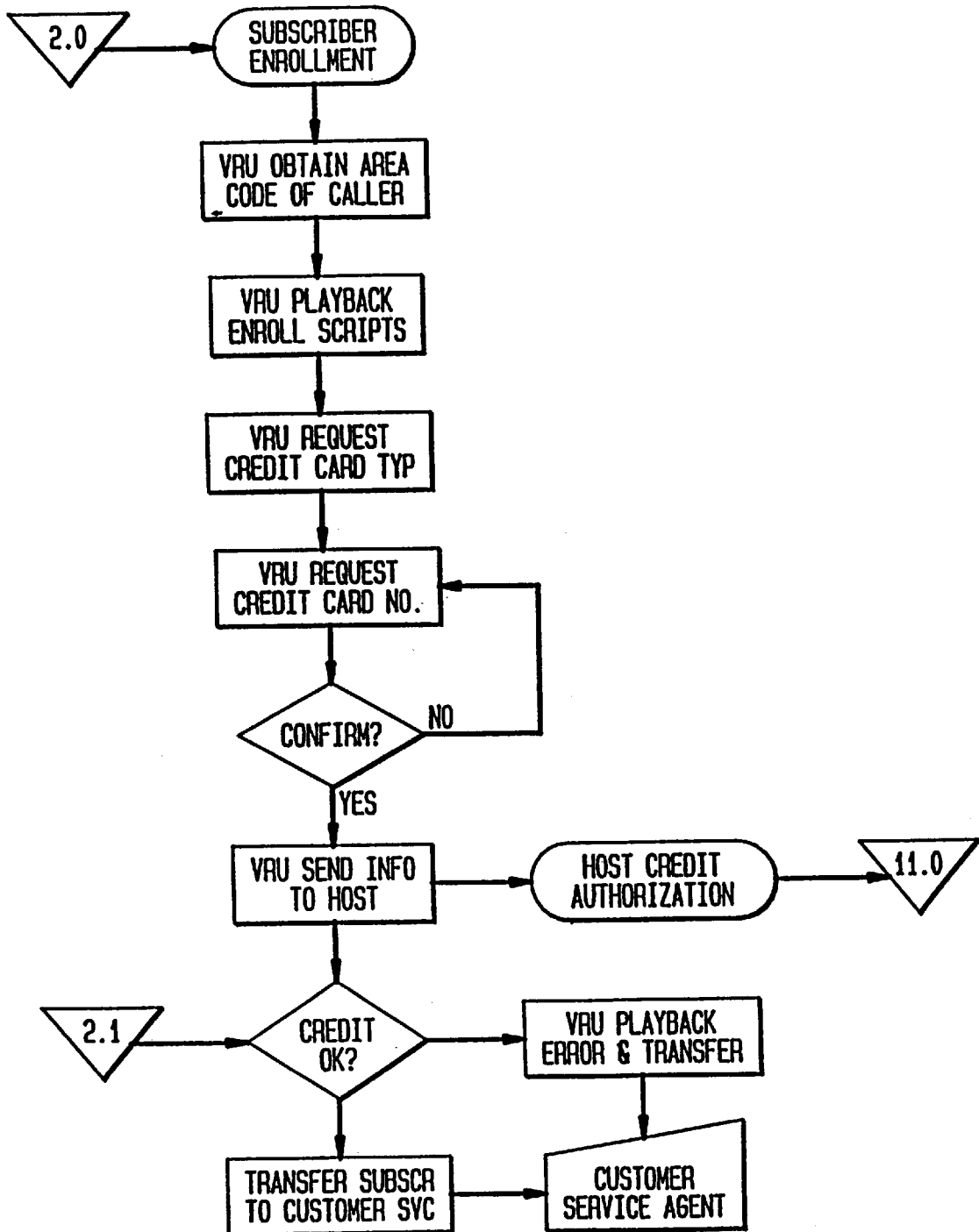


FIG. 2



U.S. Patent

Jul. 13, 1999

Sheet 3 of 18

5,921,865

**FIG. 2A**

VRU: WELCOME TO THE AUTOMATED SUBSCRIBER  
ENROLLMENT PROCESS. YOU WILL BE ASKED  
A SERIES OF QUESTIONS TO WHICH YOU WILL  
RESPOND BY PRESSING THE APPROPRIATE  
NUMBERS ON YOUR TOUCH TONE TELEPHONE.  
WHEN YOU HAVE ANSWERED ALL QUESTIONS YOU  
WILL BE TRANSFERRED TO A CUSTOMER SERVICE  
AGENT WHO WILL PROVIDE YOU WITH MORE  
INFORMATION ABOUT THE TELEMAGING PROCESS.  
IN ADDITION THE AGENT WILL CONFIRM ALL THE  
INFORMATION WHICH YOU HAVE PROVIDED.

PLEASE SELECT THE CREDIT CARD YOU WISH TO  
USE. WE WILL ALSO OBTAIN CREDIT INFORMATION  
FROM YOUR CREDIT CARD COMPANY AT THIS  
TIME.

PRESS 1 FOR VISA  
2 FOR MASTER CARD  
3 FOR DISCOVER  
4 FOR AMERICAN EXPRESS  
5 FOR DINERS CLUB

RESPONSE: 1

VRU: YOU HAVE SELECTED VISA  
ENTER YOUR CARD NUMBER

RESPONSE: 1234567890123456

VRU: YOU ENTERED 123 456 789 012 345 6  
PRESS 1 TO CONFIRM  
2 TO RE-ENTER

**FIG. 2B**

VRU: ENTER YOUR FOUR DIGIT EXPIRATION  
MONTH AND YEAR

RESPONSE: 1189

VRU: YOU ENTERED 11 89  
PRESS 1 TO CONFIRM  
2 TO RE-ENTER

RESPONSE: 1

VRU: ENTER YOUR 2 DIGIT WEEKLY  
WAGER AMOUNT

RESPONSE: 10

VRU: YOU ENTERED 10 DOLLARS  
PRESS 1 TO CONFIRM  
2 TO RE-ENTER

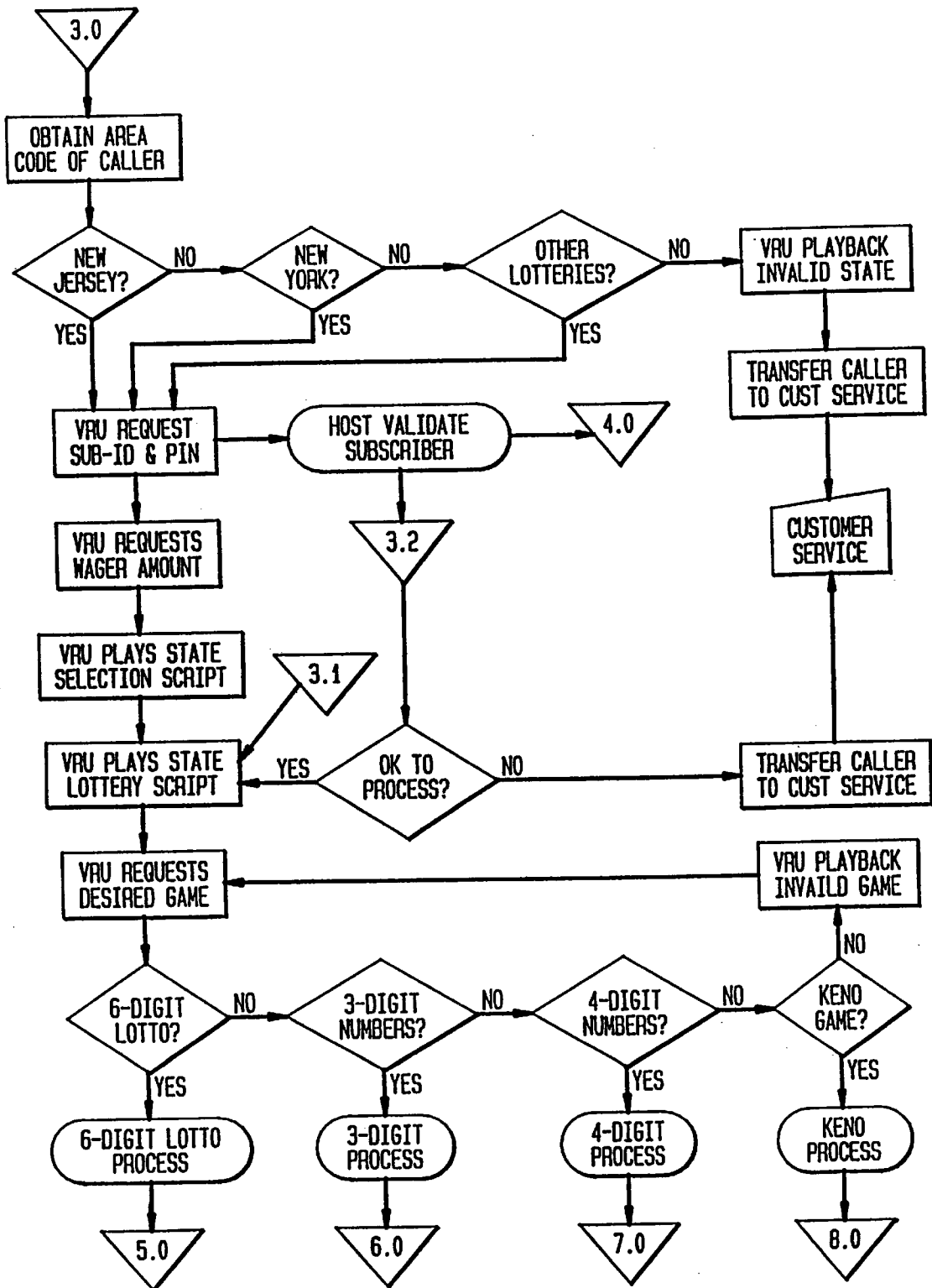
RESPONSE: 1

VRU: THE SYSTEM WILL NOW CHARGE YOUR  
CREDIT CARD WITH \$50 PROVIDING YOU  
WITH AN OPEN BALANCE TO WAGER. WE WILL  
ALSO OBTAIN YOUR CREDIT INFORMATION FROM  
THE CREDIT CARD COMPANY YOU'VE SELECTED.  
PRESS 1 TO AUTHORIZE THE WITHDRAWAL  
AND OBTAINING OF CREDIT INFORMATION.

RESPONSE: 1

VRU: YOU WILL NOW BE TRANSFERRED TO A  
CUSTOMER SERVICE AGENT.

FIG. 3





**FIG. 3A**

VRU: WELCOME TO LOTTERY TELEWAGERING  
ENTER YOUR ACCOUNT NUMBER

RESPONSE: 123456789098

VRU: YOU ENTERED 123 456 789 098  
PRESS 1 TO CONFIRM  
2 TO RE-ENTER

RESPONSE: 1

VRU: ENTER YOUR PERSONAL I.D.

RESPONSE: 12345

VRU: YOU ENTERED 123 45  
PRESS 1 TO CONFIRM  
2 TO RE-ENTER

RESPONSE: 1

VRU: ENTER YOUR 2 DIGIT WAGER AMOUNT

RESPONSE: 10

VRU: YOU ENTERED 10 DOLLARS  
PRESS 1 TO CONFIRM  
2 TO RE-ENTER

RESPONSE: 1

U.S. Patent

Jul. 13, 1999

Sheet 7 of 18

5,921,865

**FIG. 3B**

VRU: YOU WILL NOW BE ASKED TO SELECT THE  
LOTTERY IN WHICH YOU WISH TO WAGER.

TO WAGER PRESS

1 FOR CONNECTICUT

2 FOR NEW JERSEY

3 FOR NEW YORK

4 FOR PENNSYLVANIA

5 FOR OTHER STATES

RESPONSE: 2

**FIG. 3C**

VRU: WELCOME TO NEW JERSEY LOTTERY

PRESS 3 FOR PICK 3

4 FOR PICK 4

6 FOR PICK 6

7 FOR LUCKY 7

RESPONSE: 6

FIG. 4

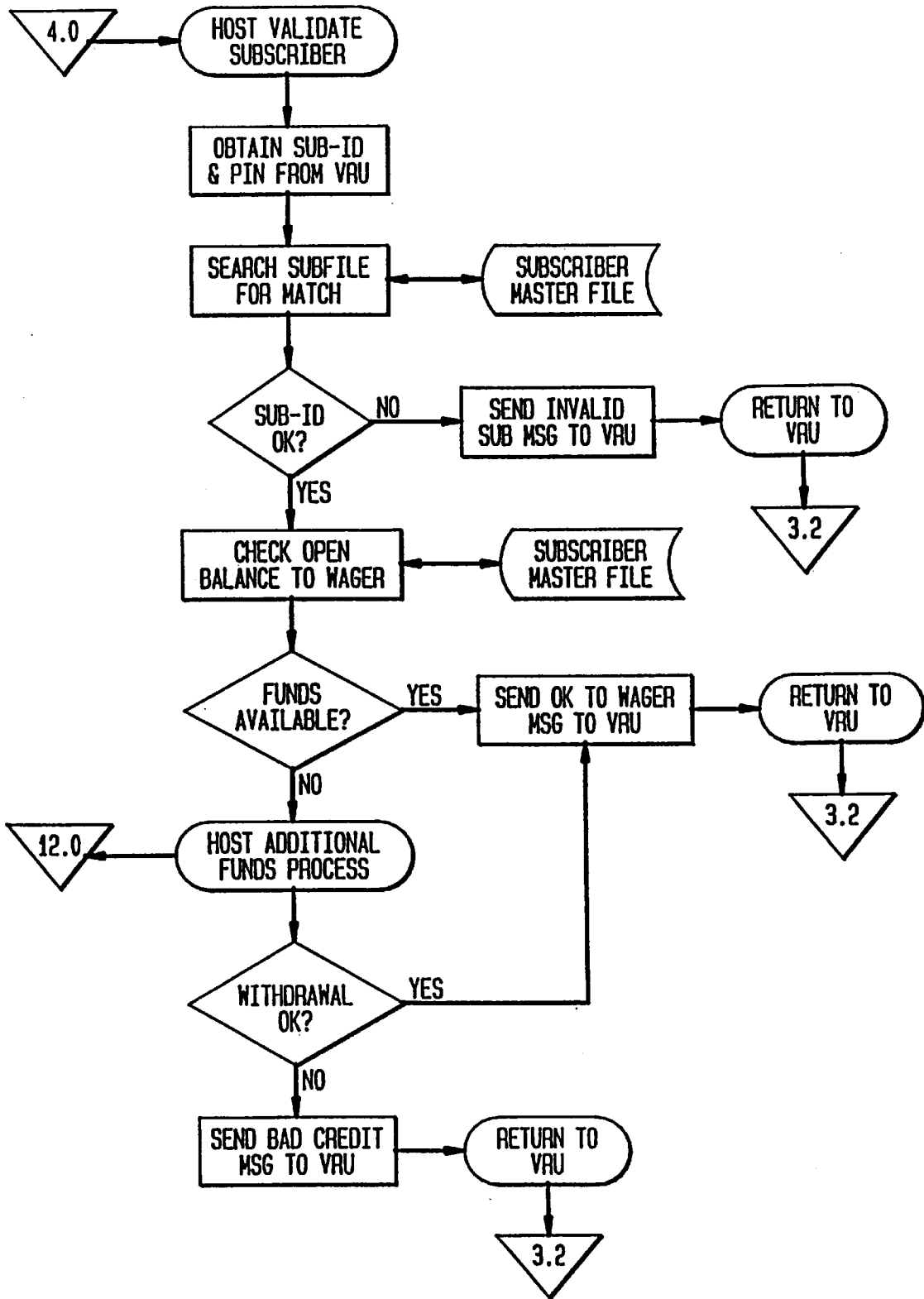


FIG. 5

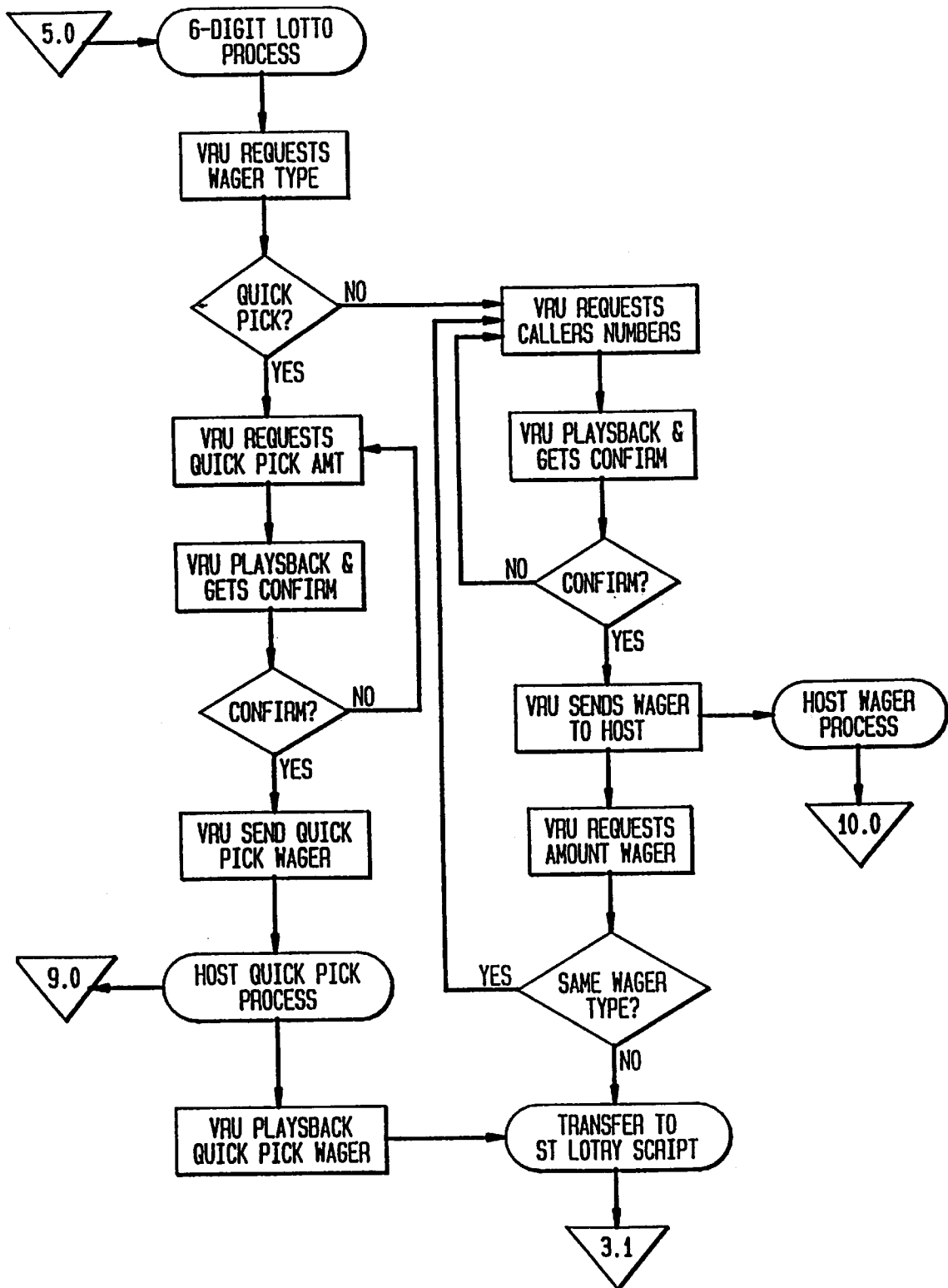


FIG. 5A

VRU: YOU HAVE CHOSEN PICK 6 LOTTO  
PRESS 1 FOR QUICK PICK  
2 TO ENTER YOUR NUMBERS

RESPONSE: 1

VRU: ENTER YOUR SIX TWO DIGIT  
PRESS 2 DIGIT DOLLAR AMOUNT

RESPONSE: 10

VRU: YOU HAVE ENTERED 10 DOLLARS  
PRESS 1 TO CONFIRM  
2 TO RE-ENTER

RESPONSE: 1

VRU: PLEASE HOLD FOR CONFIRMATION  
PLAY 1 1 12 19 34 39 46  
PLAY 2 13 22 28 35 39 49  
PLAY 3 5 9 14 27 29 32  
PLAY 4 13 19 20 28 41 48  
PLAY 5 3 12 18 31 39 43  
TICKET NUMBER IS 122 387 913 027  
PLAY 6 8 10 21 28 36 42  
PLAY 7 6 13 25 29 32 44  
PLAY 8 21 29 32 38 40 47  
PLAY 9 19 23 28 32 40 43  
PLAY 10 2 9 14 20 31 38  
TICKET NUMBER IS 122 387 918 017  
PRESS 1 TO PLACE ANOTHER BET  
3 TO STOP WAGERING

RESPONSE: 3

VRU: THANK YOU FOR PLAYING

**FIG. 5B**

VRU: YOU HAVE CHOSEN PICK 6 LOTTO  
PRESS 1 FOR QUICK PICK  
2 TO ENTER YOUR OWN NUMBERS

RESPONSE: 2

VRU: ENTER YOUR SIX TWO DIGIT  
NUMBERS FROM 01 - 54

RESPONSE: 051016182937

VRU: YOU ENTERED 5 10 16 18 29 37  
PRESS 1 TO CONFIRM  
2 TO RE-ENTER

RESPONSE: 1

VRU: PRESS 1 TO PLACE ANOTHER BET  
2 TO SELECT ANOTHER GAME  
3 TO STOP WAGERING

RESPONSE: 3

VRU: PLEASE HOLD FOR CONFIRMATION  
YOUR TICKET NUMBER IS 209 532 901 302

THANK YOU FOR PLAYING

FIG. 6

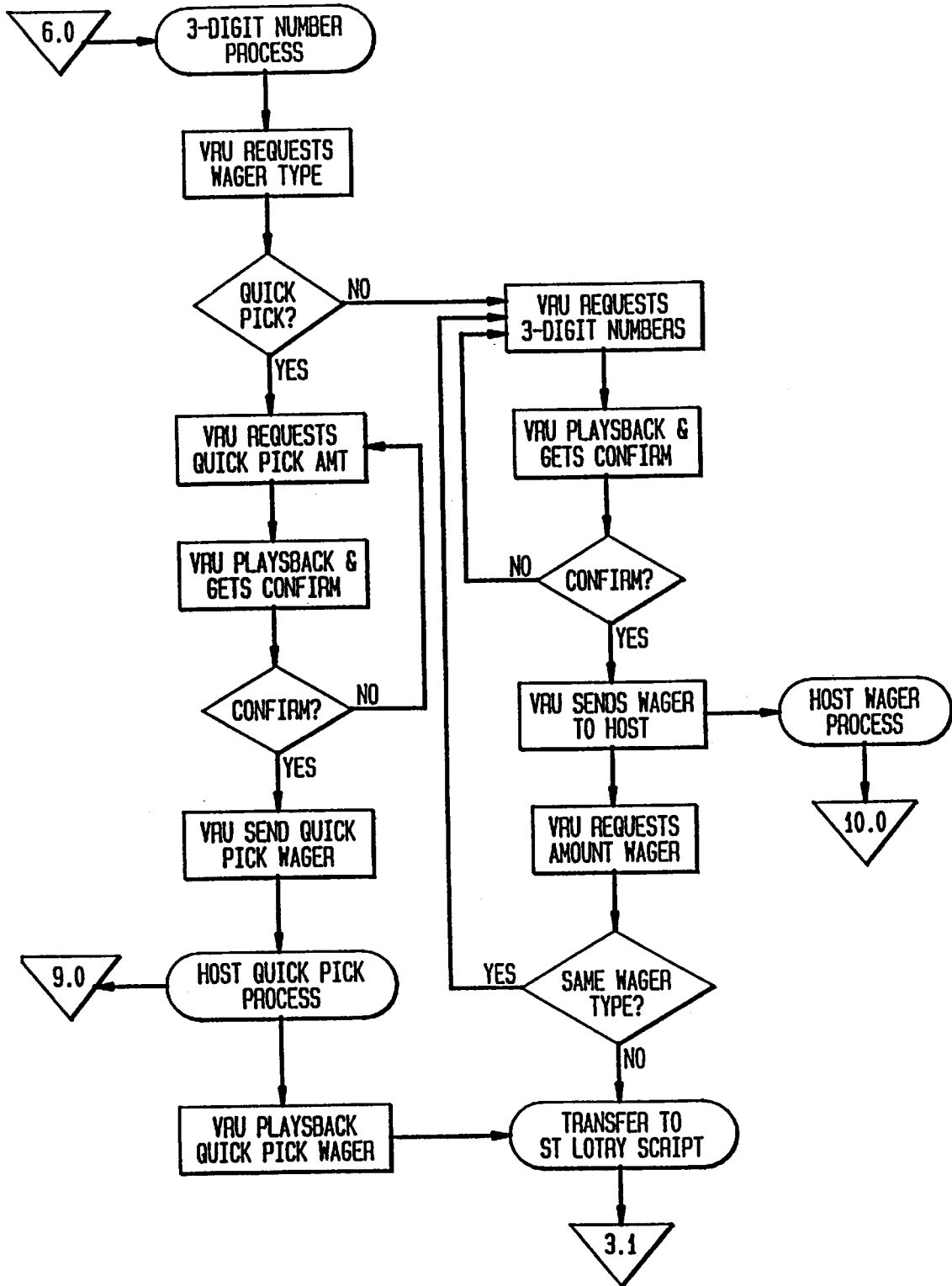


FIG. 7

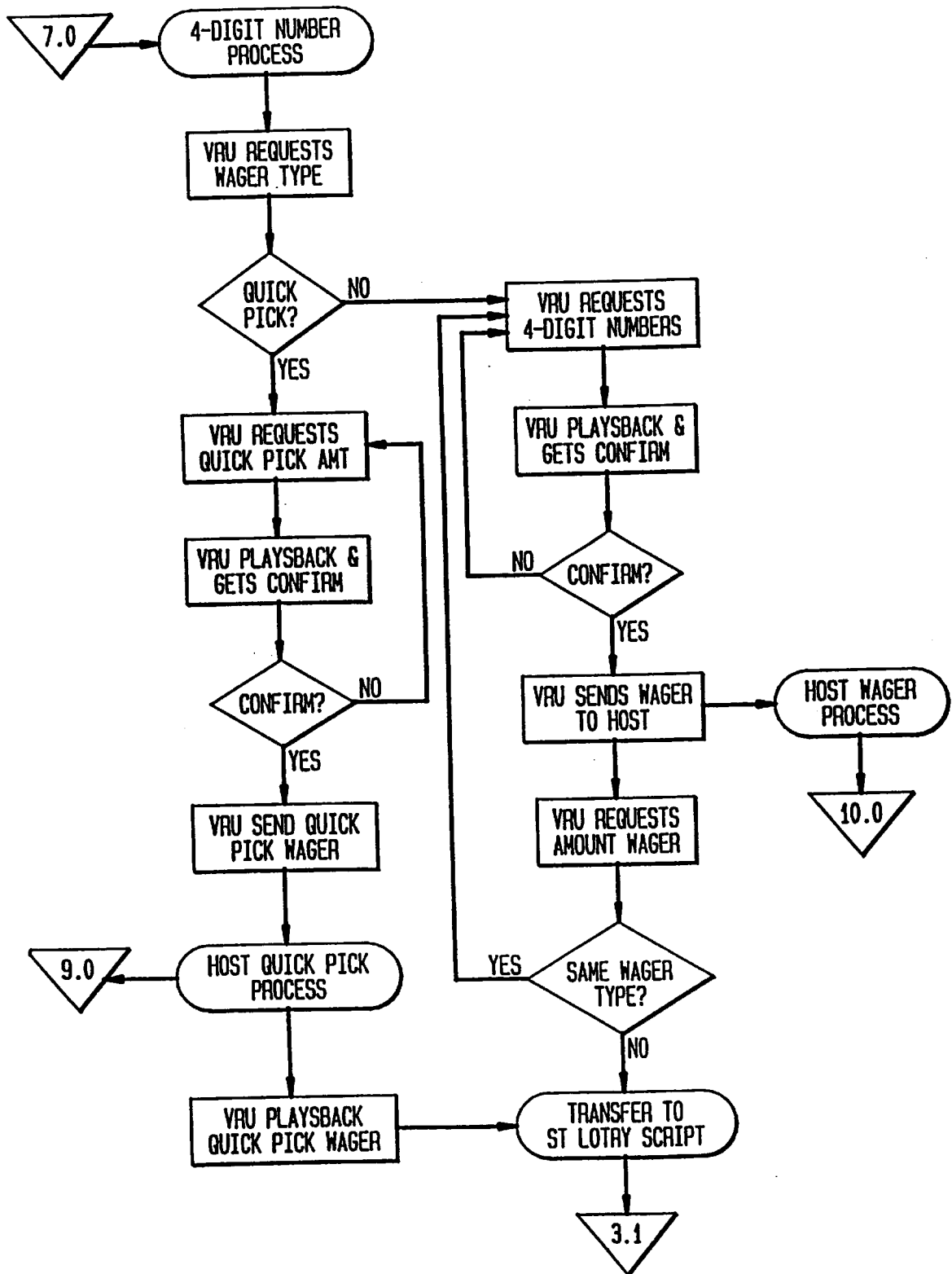




FIG. 8

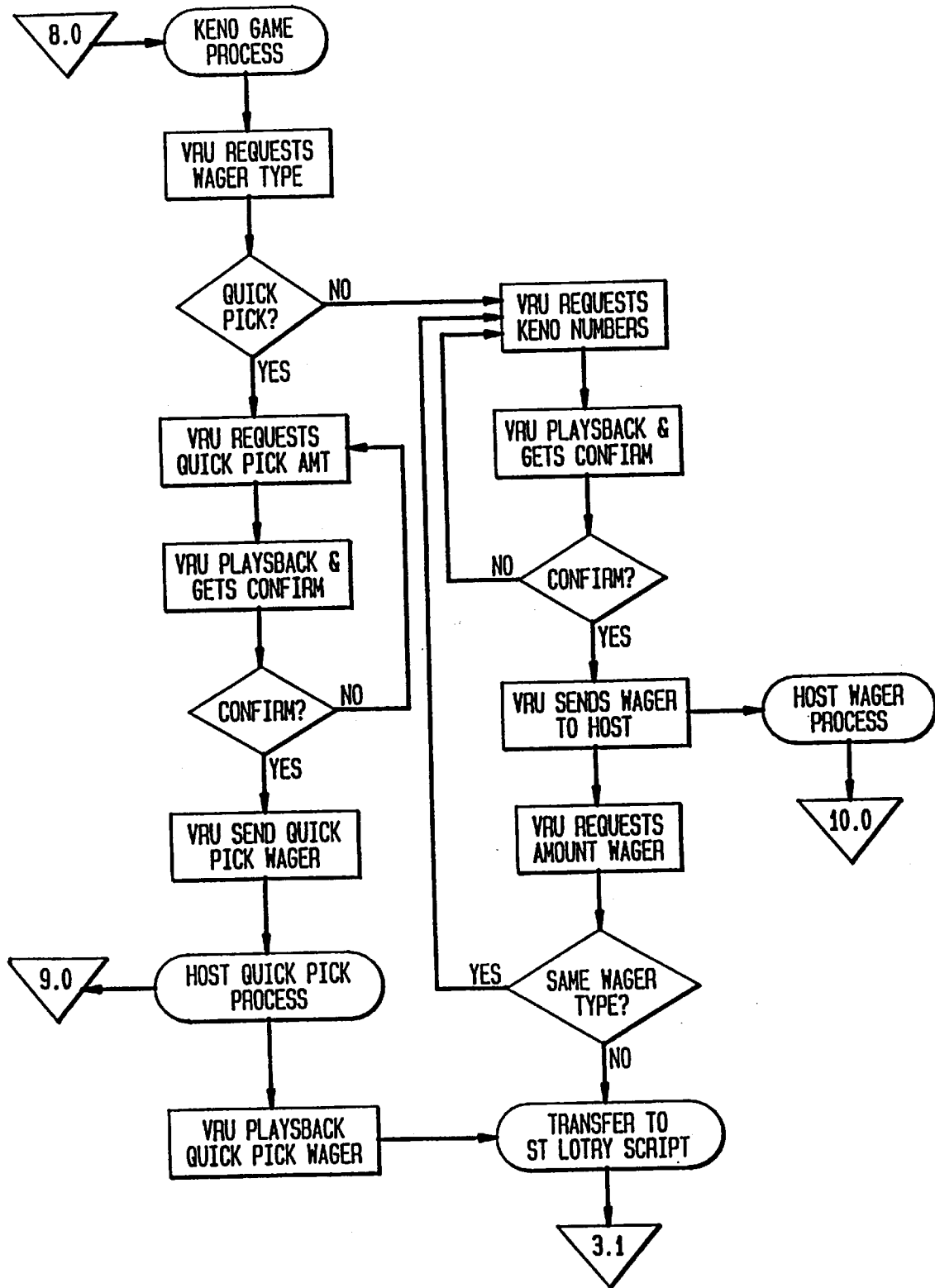


FIG. 9

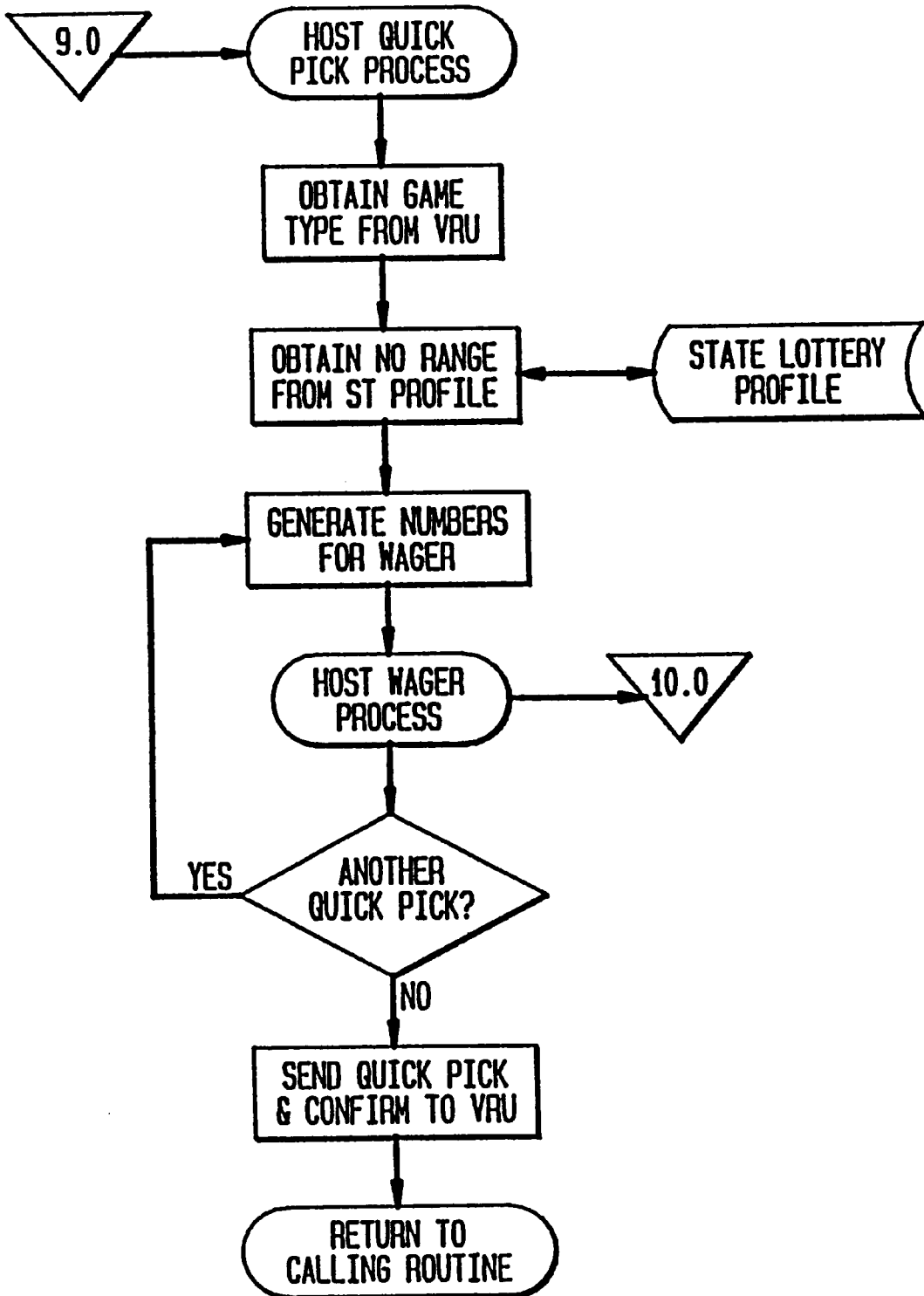


FIG. 10

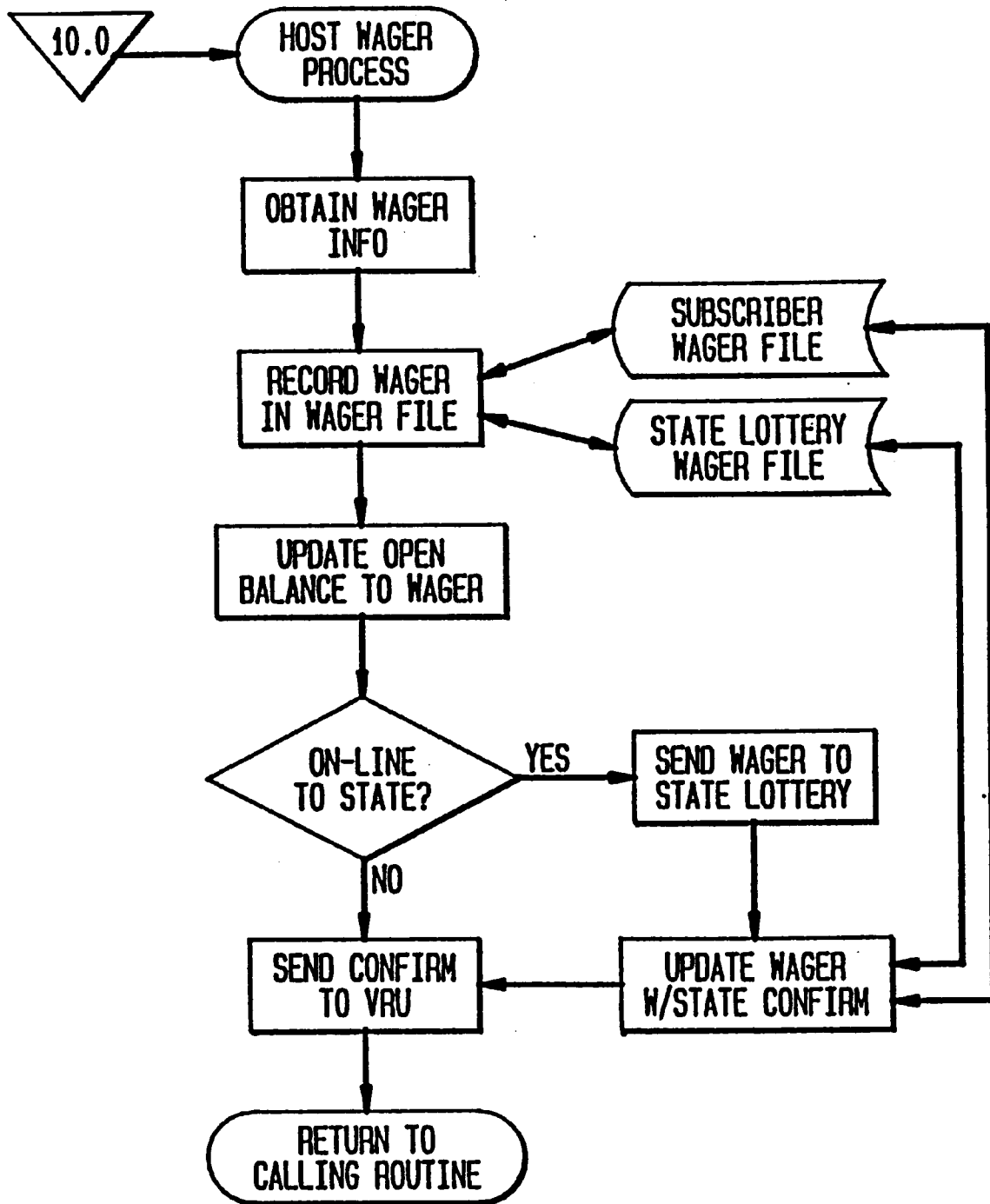


FIG. 11

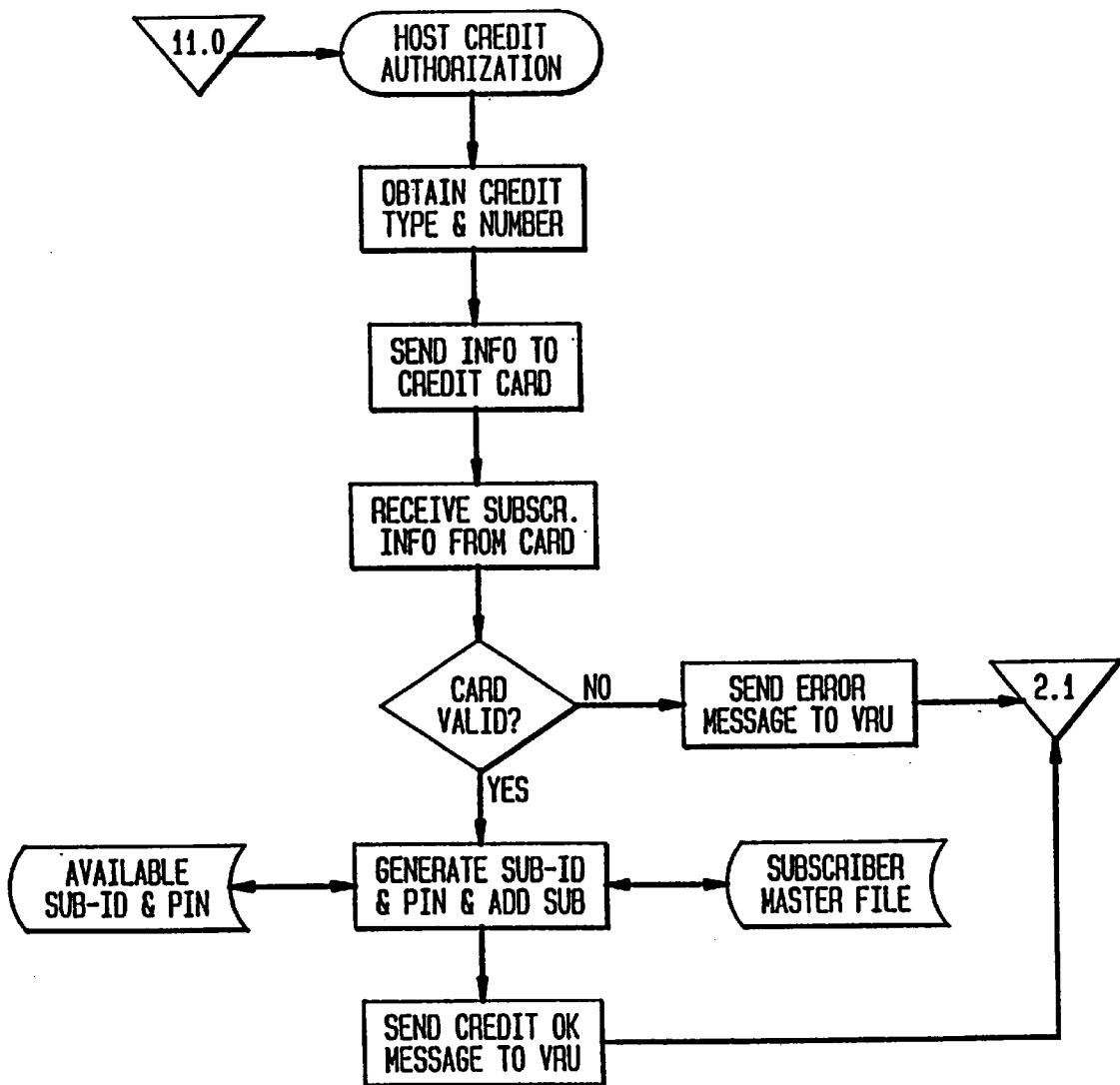
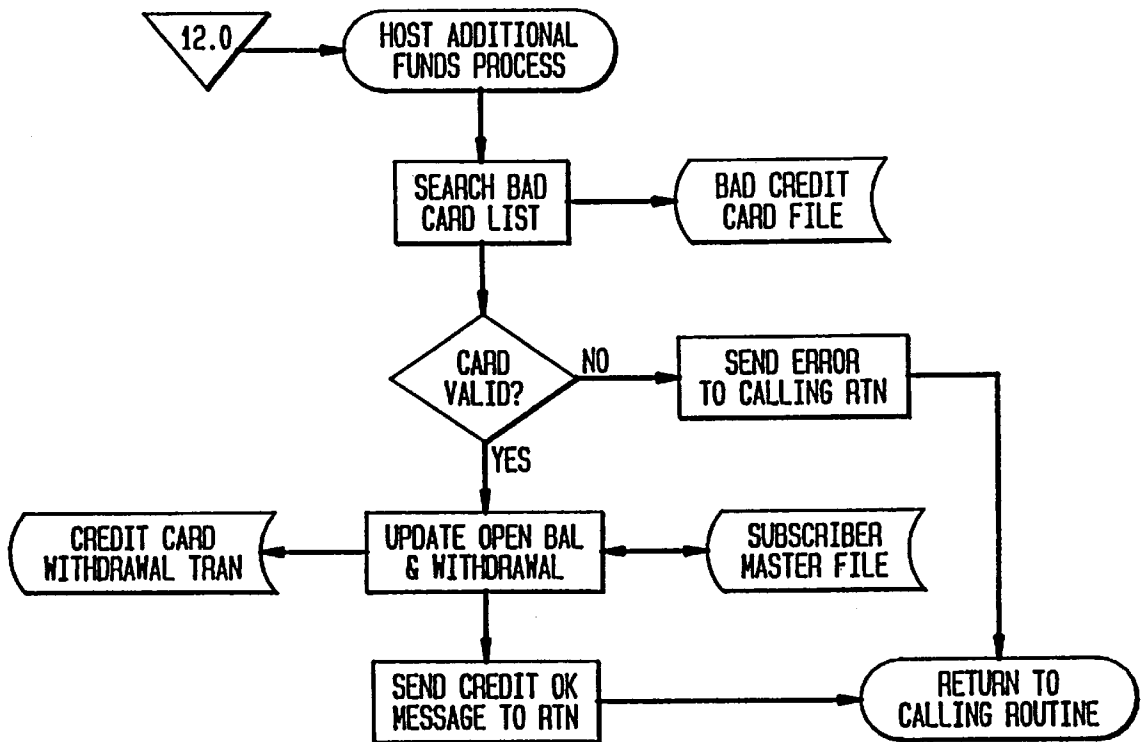


FIG. 12



5,921,865

1

## COMPUTERIZED LOTTERY WAGERING SYSTEM

### CROSS REFERENCE TO RELATED APPLICATIONS

This is a continuation of application Ser. No. 08/781,609, filed Jan. 16, 1997 now U.S. Pat. No. 5,816,919.

This application is a continuation-in-part of copending application Ser. No. 08/426,145, filed Apr. 19, 1995, which is, in turn, a continuation-in-part of application Ser. No. 08/181,361, filed Jan. 13, 1994, now U.S. Pat. No. 5,415,416, issued May 16, 1995, which is, in turn, a continuation of application Ser. No. 08/004,633, filed Jan. 12, 1993, now abandoned, which is, in turn, a continuation of application Ser. No. 07/489,814, filed Mar. 6, 1990, now abandoned.

This invention relates to an automated telecommunication system for processing lottery wagers received over the telephone.

### BACKGROUND OF THE INVENTION

Typically, in the United States in order to play a state lottery either one physically goes to a designated state lottery agent to place a wager, or subscribes to a lottery service that plays daily or weekly their same lottery numbers for a fee.

Other known lottery systems for placing a lottery wager include the following. In the U.S. Pat. No. 4,842,278, Markowitz describes a lottery network system having individual lotteries interfaced together through to a network which processes player entries for plays in both the individual local lottery or the national lotteries. The player places bets on a lottery terminal by pressing various keys on its keyboard in response to a menu-driven screen display. In Canadian Patent No. 1,162,336, De Bruyn describes a telecommunication system adapted for processing gambling stakes for the Canadian national lottery for both French and Dutch speaking subscribers. The system is connected to a telephone exchange which answers a subscriber's call and requests lottery numbers and a wager, which the subscriber inputs by means of a selector device on the telephone. A memory device records the subscriber's telephone number, lottery numbers and the wager. A converter device then converts these numbers as stored in the memory and transmits a confirmation message in either the Dutch or French language, depending upon the telephone number, and repeats either the chosen lottery numbers and wager, or a rejection message because of a processing error.

There are other known telecommunications systems known for processing information via the telephone. U.S. Pat. Nos. 4,669,730 and 4,815,741, issued to Small, teach an automatic sweepstakes game for use on automatic teller machines and point of sales terminals. U.S. Pat. No. 4,713,837, issued to Gordon, teaches a system for remote reading of utility meters to effect electronic billing. U.S. Pat. Nos. 4,792,968 and 4,845,739, issued to Katz, teach a telecommunications system to elicit and process information from a subscriber, which inputs information by pressing keys on a terminal in response to a voice generator. In the Katz systems, this data is processed for statistical analysis for correlating the data inputs of various subscribers to find isolated subsets from that data.

None of the aforementioned systems allow a subscriber to call up on a touch-tone telephone, set up an account with a lottery system, place wagers in one or more lotteries available on the system, and charge the account for the wager.

2

## SUMMARY OF THE INVENTION

Accordingly, the invention provides a lottery wagering system comprising:

- (a) automatic call director means (ACD) for receiving incoming enrollment calls from subscribers who wish to enroll with the system, and for receiving incoming wagering calls from subscribers who wish to wager with the system;
- (b) first voice responsive means (enrollment VRU) connected thereto for receiving the enrollment calls routed from the ACD, for playing a series of recorded audio messages requesting subscriber enrollment information to be input via touch-tone telephone means, the subscriber enrollment information including a credit card selection corresponding to one of a plurality of credit card companies, and a credit card number associated with the credit card selection, and for playing an associated series of audio messages requesting confirmation of the subscriber enrollment information;
- (c) second voice responsive means (wagering VRU) also connected thereto for receiving the wagering calls routed from the ACD, for playing a series of recorded audio messages requesting subscriber wager information to be input via the touch-tone telephone means, the subscriber wager information including an account number, a personal account number, a personal identification number, a particular lottery game format chosen from a plurality of lottery game formats available, lottery numbers and a wagering amount for the particular lottery game chosen, for playing an associated series of audio messages requesting confirmation of the subscriber wager information, then for playing an audio confirmation message with an associated lottery ticket number assigned to the lottery wager; and
- (d) host processor means having storage means and being connected to both the enrollment VRU and the wagering VRU, for receiving the subscriber enrollment information routed from the enrollment VRU and storing it in a master subscriber enrollment file in the storage means, and for receiving the subscriber wager information, comparing it to a master subscriber enrollment file to validate it, storing it in a master subscriber lottery wager file in the storage means, and assigning to it the associated lottery ticket number for the wager.

### DESCRIPTION OF THE FIGURES IN THE DRAWING

The foregoing and other objects, features and advantages will be apparent from the following description of the preferred embodiment of the invention as illustrated in the accompanying figures of the drawing. There are shown in the figures of the drawings embodiments which are presently preferred. It should be understood that the invention is not limited to the precise arrangement and instrumentality shown in these figures wherein:

FIG. 1 is a schematic diagram of the lottery wagering system.

FIGS. 2 shows a flow chart of a subscriber enrollment process, and FIGS. 2a and 2b show the script for the messages played by the VRU back to the subscriber.

FIG. 3 shows a flow chart of the subscriber identification and game selection process, and FIGS. 3a, 3b and 3c show the script for the messages played by the VRU back to the subscriber.

FIG. 4 shows a flow chart of the host validate subscriber process.

5,921,865

3

FIG. 5 shows a flow chart of the 6-digit Lotto process, and FIGS. 5a and 5b show the scripts for the messages played by the VRU back to the subscriber.

FIG. 6 shows a flow chart of the 3-Digit Number Game process.

FIG. 7 shows a flow chart of the 4-Digit Number Game process.

FIG. 8 shows a flow chart of the Keno process.

FIG. 9 show a flow chart of the host Quick Pick process.

FIG. 10 shows a flow chart of the host wager process.

FIG. 11 shows a flow chart of the host credit card authorization process.

FIG. 12 shows a flow chart of the host additional funds process.

#### DESCRIPTION OF THE PREFERRED EMBODIMENTS

Generally, as shown in FIG. 1, the invention herein is a computerized telecommunications lottery wagering system. The system automatically handles telephone calls from subscribers with an automatic call director (ACD). A voice responsive unit (VRU) welcomes the subscriber to the lottery wagering system and places a wager for the subscriber based on information elicited from them over the telephone including and account number, personal ID number, the particular state lottery of interest, the particular lottery format of interest, such as 6-Digit lotto, "Keno", 3-Digit lotto, the type of wager, "Quick-Pick" or "personal Numbers", and a betting amount. The host computer (hereinafter "host") stores the information in a mainframe computer and confirms the wager back to the subscriber via the VRU.

The link between the telephone handset and the ACD may be through the telephone company equipment by landline, wireless communications such as cellular telephone, satellite communications or fiber optic connections. Where the subscriber has computer facilities, voice and touch-tone is not required and the subscriber may access the system directly from the computer.

A special purpose computer may also be employed. This special purpose computer takes the place of the telephone and includes a special keyboard and processor. The computer replaces the telephone unit; the special keyboard replaces the telephone's keypad.

The system may also be accessed over the Internet where the system adopts an Internet address and subscriber identification encoding to control access.

The host is more completely described in an IBM brochure entitled, IBM System/88 Digest, First Edition (December 1988), Publication no. G520 6518-00, which is hereby incorporated by reference. The ACD is more fully described in an AT&T brochure entitled, An Introduction to Definity 75/85 Communications System, Generic 2, which is hereby incorporated by reference. The VRU is more fully described in a Perception Technology brochure entitled, BT-111 The Perception Advantage, which is hereby incorporated by reference. If required, a multi-lingual VRU may be employed.

In one embodiment, the system provides subscribers with two 800 numbers, one for the purpose of enrolling as a subscriber and the other for the purpose of placing wagers. When the subscriber dials either of the 800 numbers they will be connected to their, local telephone company, and then ultimately into the network of the WATTS carrier that are selected to provide the service. All calls are connected to

4

the ACD from the WATTS network and routed to the appropriate VRU. The ACD routes Enrollment calls to enrollment VRUs and wagering calls to wagering VRUs. To determine the subscriber's originating location the system utilizes a feature of the network called Automatic Number Identification (ANI). The ANI feature allows the system to determine, at a minimum, the area code and 3-digit exchange of the caller and in many instances the entire 10-digit telephone number. In one embodiment, the system uses the area code to limit the caller to placing wagers only with the state lottery within the state from which they are calling. In another embodiment the system allows the subscriber to place lottery wagers on an interstate or interstate basis, so that a lottery wager can be placed from anywhere to any state, or even international, lottery through the use of a touch-tone telephone. Both the intrastate and interstate wagering are discussed in more detail below.

#### Subscriber Enrollment Process

FIG. 2 shows a flow chart of the Subscriber Enrollment process of the VRU, and FIG. 2a and 2b respectively show the associated Subscriber Enrollment VRU scripts. In this case, for example, the subscriber would have dialed 1-800-ENROLL and been connected to an enrollment VRU by the ACD. The system is adaptable to any actual enrollment/customer service 800 number assigned by the telephone company.

Utilizing the ANI feature, the VRU will store the telephone number of the subscriber and play the subscriber enrollment script as depicted in FIG. 2a. First the VRU plays a welcome message to the subscriber, welcoming them to the automated Subscriber Enrollment Process, and then asks them to respond to a number of questions by pressing the appropriate number on their touch tone telephone.

As shown in FIG. 2a, the first question to be asked is "Please select the credit card you wish to use". For example, in the process of selecting the caller will be asked to press "1 for VISA", "2 for Mastercard", "3 for Discover", "4 for American Express", and "5 for Diners Card". In the example, the caller responded with a '1' and the VRU played back a message, "You have selected VISA, enter your card number". After the subscriber enters their card number, the VRU plays back the numbers entered and requests confirmation of the account number or re-entry. For example, the VRU plays back, "You have entered 123, 456, 789, 012, 345, 6, press 1 to confirm, 2 to re-enter". If the number played back is incorrect the caller would press 2 and re-enter their account number. If the number was correct the caller would press 1 and the VRU would store the number and immediately send a transaction to the host to initiate the Host Credit Card Authorization process as indicated by the off page connector 11.0 (shown as an inverted pyramid), see FIG. 11 described herein. The VRU sends a transaction code, credit card type code, and credit card account number to the host. This authorization process is described later in this document.

Concurrently with that authorization by the host, the VRU continues the automated enrollment process by playing Subscriber Enrollment Script 2 (FIG. 2b). The VRU plays a message requesting the subscriber to enter the four-digit expiration month and year of their credit card. In our example, the caller entered "11 89", and the VRU responded with the message "You have entered 11 89, press 1 to confirm, 2 to re-enter". If the caller confirms the date by pressing 1 then the VRU will respond with the message "Enter your two-digit weekly wager amount", else the VRU



5,921,865

5

will again request the expiration month and year. When the caller then enters "10" signifying that on a weekly basis they wager ten dollars (\$10.00) on lottery games, the VRU confirms the weekly wager amount by responding with a message "You have entered 10 dollars, press 1 to confirm, 2 to re-enter". In our example, since the caller pressed '1' to confirm, the VRU then plays the message, "The system will now charge your credit card with 50 dollars, providing you with an open balance to wager. We will also obtain your credit information from the credit card company you have selected. Press 1 to authorize the withdrawal and obtaining of credit information". To minimize the number of credit card transactions, in a preferred embodiment, the system software multiplies the wager amount entered by five and rounds upwards to the nearest ten dollars. If the subscriber entered five dollars, the system would multiply five by five giving twenty-five and round upwards to thirty dollars. This amount is withdrawn from the credit card creating an open balance to wager in the subscribers account. The caller confirms the withdrawal amount by pressing '1' and the VRU responds with a message, "You will now be transferred to a customer service agent."

As indicated earlier, the VRU can send a transaction to the host which initiated the Host Credit Card Authorization process (FIG. 11). The host may for instance, be linked on-line to the credit card company's database to validate the subscriber's credit card number. In addition, the system obtains the caller's name, address, city, state, zip code, home and business telephone numbers, and their social security number. The host then stores the subscriber's credit card information in the subscriber master file, which is made available to the customer service agent when the caller is transferred to complete the enrollment. Subsequently, the customer service agent repeats all information entered by the subscriber and obtained from the credit card company. Once the caller verbally confirms all the information they will be provided with a-subscriber ID, a personal ID number (PIN), and the 800 number to be used for wagering. The system will also request the preparation of an information packet which will be mailed to the subscriber. The entire conversation is recorded via a tape recorder that is connected to the ACD customer service agent's extension. The system will record all conversations using this equipment and since the system also records the date and time of each call, the recorded information is readily available.

This concludes the Automated Subscriber Enrollment Process. The subscriber is now able to place lottery wagers utilizing the system. The customer service agent can transfer the subscriber to a wagering VRU and the subscriber can start placing wagers.

#### Wagering and Game Selection Process

FIG. 3 shows a flow chart of the Subscriber Identification and Game Selection process of the VRU, and FIGS. 3a, 3b, and 3c respectively show the associated wagering VRU scripts played to the subscriber. In one embodiment, for example, the subscriber would dial 1-800-WAGER to be connected to a wagering VRU by the ACD. The system is adaptable to any number assigned by the telephone company.

Utilizing the ANI feature, the wagering VRU will store the telephone number of the caller and play the subscriber identification script as depicted in FIG. 3a. Note that in the description of this embodiment the interstate wagering feature of the system is highlighted, but where appropriate, the differences related to intrastate wagering are mentioned. But

6

generally, on an intrastate basis the subscriber would be blocked from wagering by the VRU if their call was not initiated from within a state that had a lottery. The subscriber would only be allowed to place wagers with that lottery.

As shown in FIG. 3 in the Subscriber Identification and Game Selection process, the VRU plays a welcome message to the subscriber and requests their account number as depicted in FIG. 3a. In our example, the subscriber entered '123456789098', and the VRU responded with, "You entered 123, 456, 789, 098, press 1 to confirm, 2 to re-enter". The subscriber responded with a 1 and the VRU then played the message, "Enter your personal ID". The subscriber entered '12345' and the VRU responded with "You entered 123, 45, press 1 to confirm, 2 to re-enter". The subscriber responded by pressing '1' to confirm that the number was correct. The VRU stores the subscriber ID and PIN and immediately sends a transaction to the host to validate the subscriber. The VRU sends a transaction code, subscriber ID, and PIN to the host which would immediately initiate the Host Validate Subscriber process, see FIG. 4 described herein.

The VRU then requests the entry of the amount to be wagered during this call. The host compares this amount to the subscriber's open balance to wager to insure that sufficient funds are available for wagering. The system only reduces the open balance to wager as wagers are placed and not by the entry of this wager amount. The VRU plays the message, "Enter 2-digit wager amount". In our example, the subscriber entered '10', and the VRU then responds with, "You entered 10 dollars, press 1 to confirm, 2 to re-enter". As shown the subscriber responded by pressing '1'.

In response to the subscriber input, the VRU plays either the script in FIGS. 3b or 3c. The determining factor is whether interstate wagering is allowed. For interstate wagering, the VRU plays the script in FIG. 3b, Lottery Selection, to the subscriber. This script gives the subscriber the option to select one of five options. The first four options will be the lotteries in close proximity to their state. The fifth option "Other States", will cause the VRU to play another script which will allow the subscriber to select from another group of lotteries. This will continue until the subscriber is given the option to select from any state with a lottery that utilizes the service. Once the subscriber makes their lottery selection the VRU plays the script in FIG. 3c, Game Selection.

In the Game Selection script shown FIG. 3c, the VRU presents the subscriber with the various lottery games available within the selected lottery. On an intrastate basis it presents the games available within the state from which the call initiated. For instance, the VRU plays a message and welcomes the subscriber to the lottery then plays a message, "Press 3 for 3-digit numbers, press 4 for 4-digit numbers, press 6 for Lotto, press 7 for Keno". In our example, the subscriber pressed '6' for Lotto. Now the subscriber can place a wager. They will now be transferred to the 6-digit Lotto process as described in FIGS. 5, 5a and 5b.

As described above, when the subscriber entered their ID and PIN, the VRU requested that the host validate the subscriber ID (see FIG. 4). At this point the host should have completed that process and has sent a signal to the VRU to allow the wager to proceed or to transfer the subscriber to customer service in the event of a problem. (The VRU also can be programmed to determine that a subscriber is having difficulty in using the system.) If the subscriber cannot place a wager for any reason at this point, the VRU will transfer the caller to a customer service agent for assistance in



5,921,865

7

completing the wager. If the host Subscriber Validation process was successful, the host returns an appropriate message to the VRU allowing the wagering to proceed. This concludes the discussion of FIGS. 3, 3a, 3b, and 3c, known as Subscriber Identification and Game Selection process.

#### Host Validate Subscriber Process

FIG. 4 shows a flow chart of the Host Validate Subscriber process, which validates the subscriber identification to the system and determines whether they have sufficient funds to place a wager. For instance, in response to voice commands from the VRU, the subscriber enters their subscriber ID and their PIN. The host receives this information from the VRU and calls the validation process which searches a subscriber master file for a match. If a match does not exist, then the host sends an invalid subscriber message signal to the VRU, which plays an invalid subscriber message back to the subscriber. If a match is found, then the host compares the subscriber's open balance to wager against the amount which they indicated they would be wagering. If there are sufficient funds, then the host sends a sufficient funds signal to the VRU and the subscriber would then be allowed to proceed. The system then returns to off page connector 3.2 (shown as an inverted pyramid and also known as an off page connector), see FIG. 3. In our example, since funds are available the host sends a message signal back to the VRU to proceed with the wager. If funds are not available, the host calls the Host Additional Funds process, indicated by the off page connector 12.0, see FIG. 12 described herein. In response to a withdrawal approval from the Host Additional Funds process, the host sends a sufficient funds signal to the VRU and the subscriber would then be allowed to proceed. In response to a withdrawal nonapproval, the host sends a bad card signal to the VRU which plays a bad card message back to the subscriber. The system then returns to off page connectors 3.2, see FIG. 3 described above.

#### Six-Digit Lotto Process

FIG. 5 shows a flow chart of the 6-digit Lotto process of the VRU, and FIGS. 5a and 5b show the scripts for the messages played by the VRU back to the subscriber. All of the game types described herein in FIGS. 5 to 8 from an overall systems perspective operate the same way. The essential difference between the games is the combination of numbers played, including both the amount and the range of numbers allowed. For example, 6-digit lotto, requires 6 two-digit numbers. Different state lotteries have variations on the range of number which can be selected. For example, in New Jersey the lotto game range is presently from 1 to 48, and subscribers can select any 6 numbers that are not repeated within that range. In New York's lotto game the range is presently from 1 to 54.

In the flow chart shown in FIG. 5, after the subscriber picks 6-digit lotto (see FIG. 3), the VRU requests a wagering type from the subscriber. In the script shown in FIG. 5a, the VRU plays a message "You have chosen pick 6 lotto" to inform the subscriber of their choice, and also requests in the message that they either "press 1 for Quick Pick" or "2 to enter your numbers". If the subscriber chooses Quick Pick by responding with a "1", then the VRU plays a message "You have selected Quick Pick press 2 digit dollar amount" (again see FIG. 5a). In the case of a Quick Pick wager, the VRU requests the entry of a Quickpick wager amount then confirms it. For example, if the subscriber responds with "10", then the VRU plays a message "You have entered 10 dollars, press '1' to confirm, press '2' to re-enter" to confirm

8

or re-enter the subscriber's wagering amount. If the subscriber presses '2' to re-enter, the VRU again requests a Quick Pick amount. Presently, in the State of New Jersey a \$10.00 wager results in 10 plays since every game cost \$1.00, while in New York State the \$10.00 results in 20 plays since every game costs 50 cents, although the minimum in New York is a \$1.00 wager which gives the subscriber two games. After the subscriber confirms the \$10.00 wager amount, the VRU sends to the host the subscriber id, the lotto selected, and 6-digit lotto wager for \$10.00. The host then calls the Host Quick Pick process as indicated by off page connector 9.0, see FIG. 9 described herein.

In summary, in the Host Quick Pick process the host first determines the lottery's profile from a master state lottery file, and if the state lottery was in New Jersey, for example, where the range of numbers is from 1 to 48, then it would utilize a random number generating routine to generate 6 unique numbers between 1 and 48 for each game. Again for New Jersey, the Quick Pick process would generate 6 unique numbers for all 10 games. In comparison, if the call had been placed from New York, the host would have generated 20 games.

After the Host Quick Pick process returns with the Quick Pick numbers, the VRU plays a message "Please hold for confirmation" and plays each of the wagers generated back to the subscriber, see FIG. 5a. Note that the system only does so if the subscriber chooses to listen and record the numbers, if they hang up no message is played. The VRU also plays a confirmation or ticket number assigned by the host to that wager. As far as the overall system is concerned, once the subscriber confirms the wager amount, if the subscriber at that time choose to hang up the phone, it would still generate all of the wagers, place them in the lottery, and store all the wagers within for billing, inquiry and auditing purposes. On a monthly basis the system will produce a statement which will tell the subscriber every wager that was placed, every draw down that was made from their credit card, all service charges, an opening balance from the last statement, and a closing balance as a result of this statement. At this point the system returns to the state lottery script as indicated by the off page connector 3.1 and go to FIG. 3. Once again the system gives the subscriber the options: to place another wager, to select another game within this lottery, to select another lottery to place wagers, or finally to terminate the call.

In the alternative, the other option in the 6-digit lotto process was to allow the subscriber to enter their own numbers. If the subscriber chose to enter their own numbers by responding with '2' (i.e. no quick pick), the VRU plays the script in FIG. 5b. First, the VRU requests, based on the lottery profile, that the subscriber enters their 6 two-digit numbers within the range of 1 to 48 for N.J., or 1 to 54 for N.Y. The subscriber will utilize their touch tone phone to enter their 6 two-digit numbers. The VRU plays a message "enter your six two digit numbers from 1 to 54." In the example in FIG. 5b if the subscriber enters their numbers, then the VRU plays a message "you entered 5 10 16 18 29 37 press 1 to confirm or 2 to re-enter". If the subscriber does not confirm then the VRU again requests the subscribers numbers. Else if the subscriber confirms then the VRU sends the wager to the host, which calls the Host Wager process, see off page connector 10.0 and go to FIG. 10 described herein. The VRU sends the subscriber's wager to the host to be processed, by passing to the host the subscriber ID, the lottery and game selected, the 6 two-digit numbers entered, and that the subscriber chose their own numbers. The VRU then requests the subscriber to enter another wager. At this

5,921,865

9

point, if they choose to enter another series of numbers, they would be transferred back up to the point where the VRU requests the entry of their numbers, and they would stay in this loop until such time as they choose to do something else. Similar to that described above for the Quick pick option, at the conclusion of wagering or selecting their own numbers, the VRU will tell the subscriber to please hold on for confirmation, the host would have then come back to the VRU with a confirmation or ticket number which will be played back to the subscriber. The VRU, as in the Quick-Pick option, would now requests what they would like to do next, and based on the response, they will be transferred to the appropriate process or the call will be terminated. This concludes the discussion on the 6-digit lotto process.

#### Three-Digit Number Process

FIG. 6 shows a flow chart of the 3-Digit Number Game process of the VRU. As earlier described, the processes are essentially the same except for the number of numbers being entered and the range. In the case of 3-digit numbers, the range of numbers allowed is from 1 to 999. Again, the subscriber has the Quickpick option and the option to enter their own numbers. As seen from the flow chart, the process works substantially the same way as the 6-digit lotto process described above.

#### Four-Digit Number Process

FIG. 7 shows a flow chart of the Four-Digit Number process of the VRU. Again, this game is processed by the system essentially the same way as the 6-digit lotto option by choosing the Quickpick option or the entry of enter their own numbers. In contrast, the subscriber can select from a range from 1 to 9,999.

#### Keno Process

FIG. 8 shows a flow chart of the Keno process of the VRU. The Keno game typically works so that in order for the subscriber to win, they must choose 7 of the 11 numbers drawn by the lottery to win a prize, from a range of unique 2-digit numbers between 1 and 84. Lotteries describe this in many ways, talk about it and, in particular, in Pennsylvania, the Keno game is 7 out of 11 from 1-84. Once again, the subscriber can select a Quickpick or enter their own numbers. If they select a Quickpick, the randomizing routine would generate the numbers. If they choose to enter and confirm their own numbers, they will be asked to enter their 7 two-digit numbers. That concludes the Keno game process.

#### Quick Pick Process

FIG. 9 show a flow chart of the Quickpick process, called by the host whenever the subscriber chooses that option in any of the aforementioned games selected. In the Quickpick process, first the host obtains from the VRU the subscriber ID, the lottery, the game(such as lotto 3-digit, 4-digit, or Keno), a Quickpick option signal to indicate that the subscriber chose Quickpick, and the amount of the Quickpick option. In our example, we spoke about \$10.00, which in N.J. means that 10 games or 10 wagers will be placed. After the host process receives this information, it examines the state lottery profile for the game in question to obtain the allowable number range, and passes that information on to the random number generator which would generate the appropriate numbers for the game. It will do this until the wager amount is exhausted. The host will send each wager

10

back to the VRU. It will also call the host wager process to actually place the wagers with the state lottery and ultimately return to the VRU with the Quickpick selected. That concludes the Quickpick process.

#### Host Wage Process

FIG. 10 shows a flow chart of the Host Wager process. The system calls this process from various points in the overall systems software. For instance, the system calls this process from the Quickpick process, or from the process when the subscriber chooses to enter their own numbers. In either case, the host wager process needs the information such as the subscriber ID, the lottery, the game, the type of wager—be it Quickpick or individual personal numbers—and the actual numbers being entered. The numbers obviously vary depending on the game, but the process is the same regardless of the game. So this information is passed from the VRU. The wager will be recorded in the subscriber's wager file for the purpose of audit and monthly statements. It will also be recorded in the state lottery wager file so that both the system and the lottery can keep track of the wagers for that particular day that were placed with the lottery. For each wager the system updates the subscriber master file, specifically the open balance to wager field based on the amount of the wager. It reduces that amount by the size of the wager and the service charge. There are situations where the system may need to be connected directly to the lottery computer. The system sends the wager or wagers down to the lottery computer and receives back the ticket number or confirmation number. That ticket number or confirmation number will be utilized to update the subscriber wager file and at the same time will be utilized to update the lottery file. It is this same number which goes back to the VRU and played to the subscriber. Where the system is not connected to the lottery's computer, the ticket number or confirmation number will be a number which is generated by the system. All information will be transferred back to the routines which called the host wager process, be it the Quickpick process or be it the subscriber's entry of their own numbers for a particular game. That concludes the description on the host wager process (see FIG. 10).

#### Host Credit Card Authorization Process

FIG. 11 shows a flow chart of the Host Credit Card Authorization process. The VRU calls this process only during enrollment to elicit various information about the subscriber, specifically, name, address, city, state, zip, home phone, business phone, social security number, credit rating, etc. The aforementioned enrollment process, shown in FIG. 2, calls this host authorization process, the VRU provides it with the subscriber's credit card number and expiration date. The host, which is directly connected to the credit card company computer, from which the subscriber would have authorized the system to obtain the necessary information to complete their enrollment. The system will have access to the information and retrieve it back into the host computer. If there is no information to be obtained because the credit card number provided by the subscriber is invalid, an error message would go back to the VRU and the VRU would transfer the caller to the customer service agent. If the information we requested was retrievable, the host updates the subscriber master file with that information, looks at the available subscriber ID and PIN file for the next available subscriber numbers, and adds them to the master file. A message would go back to the VRU indicating that the credit card is valid, allowing the enrollment process to continue.

5,921,865

11

The VRU then transfers the subscriber to a customer service agent for verbal verification of all information entered.

#### Host Additional Funds Process

FIG. 12 shows a flow chart of the Host Additional Funds process. The host calls the process when additional draw-downs of funds from the credit card are needed for the subscriber. The host checks a bad credit card file, and if the subscriber's credit card number does not appear in that file, the credit card will allow a draw down of funds up to the limit allowed without a direct communication for authorization.

The system has a database with a list of the latest bad cards provided by the credit card company, so the host compares the subscriber's credit card number to the bad credit card database to verify it. If the subscriber's card is not on the list, then the host can draw down funds to whatever limit is allowed by the credit card to the system. (For example, most credit card companies establish a limit of say \$50.00 to a particular retails, as long as, the draw down is \$50.00 or less, there is no need for direct communication with the credit card company to obtain authorization, and thereby the credit card company will pre-approve that limit without the direct communication.) The advantage to this approach is that the system minimizes the interaction with the credit card company because these transactions typically take 10 to 15 seconds to accomplish, perhaps even longer, thus avoiding lengthening the time of the call as there are costs that are associated with that. And assuming that the subscriber's card was not on the bad card list, the host can draw down the appropriate amount of funds and essentially return a signal to the VRU saying that funds are now available. In addition, a transaction is sent to that credit card company's daily charge file, transferred to the credit card company overnight, to assure that funds are received from the credit card company. If the subscriber's credit card is on the bad card list, the host sends a signal back to the VRU and the system returns to off-page connection 2.2 to indicate that a credit problem exists. The subscriber is then transferred to a customer service agent who knows that a credit problem exists, and would request a different credit card from the caller or would request some direction from the caller as to what we should do in order to allow them to wager. That concludes page 3, the validate process.

Some of the other features that the system is designed to accommodate include: 1) determine winning numbers in other states; 2) determine if a ticket which they hold, regardless of the lottery was a winner; 3) determine what wagers were made over a period of time; 4) place sports wagers; and 5) place horse racing wagers.

The system may also permit play of the various "instant" games available from the lotteries. If these "instant" games, are selected, the system provides an immediate indication of a winning selection and a credit of the amount won to the subscriber's account.

While the invention has been described in its preferred embodiment, it is to be understood that the words which have been used are words of description rather than limitation and that changes may be made within the purview of the appended claims without departing from the true scope and spirit of the invention in its broader aspects.

We claim:

1. A wagering system for automatically accepting wagers comprising:

- a) communications means for receiving communications from subscribers, said communications means including computer means and a wireless link;

12

b) message means connected to said communications means for receiving the incoming communications routed from said communication means and for providing a series of messages requesting subscriber information particular to one of the plurality of wagering formats; and

c) computer means having storage means connected to said message means for receiving and storing said subscriber wagering information, and assigning a reference number to a wager.

2. The system of claim 1 wherein said wireless link includes a cellular telephone.

3. The system of claim 1 wherein said wireless link includes satellite communications.

4. The system of claim 1 wherein the subscriber wager information includes formats for instant wagering games.

5. A computer wagering system for automatically accepting wagers, comprising:

a) communications means for receiving incoming communications for making a wager;

b) message means connected to said communications means for receiving said incoming communications routed from said communications means and for providing a series of messages requesting subscriber wagering information particular to one of the plurality of wagering formats; and

c) computer means having storage means connected to said message means for receiving and storing said subscriber wagering information.

6. The computer wagering system of claim 5 wherein said communications means receives said incoming communications over a computer network.

7. The computer wagering system of claim 6 wherein said computer network is the Internet.

8. Method for automatically accepting a plurality of different wagering formats over a computer system, comprising:

receiving incoming communications from prospective wagerers and routing each of said communications according to which one of said plurality of different wagering formats is requested by a subscriber;

providing a series of messages requesting subscriber wagering information particular to one or more of said plurality of wagering formats;

requesting identification information from said prospective wagerers; and

requesting said prospective wagerers to enter a wager.

9. The method of claim 8 wherein said wagering formats comprise different game types.

10. The method of claim 9 wherein said game types include lotteries.

11. The method of claim 8 wherein said wagering formats comprise game formats.

12. The method of claim 11 wherein said game formats comprise a plurality of lottery games.

13. The method of claim 12 wherein said lottery games comprise 3-digit lotto, 4-digit lotto, 6-digit lotto, keno and quick pick.

14. The method of claim 8 wherein said wagering formats comprise interstate wagering.

15. The method of claim 14 wherein said interstate wagering comprises wagering on lotteries of different states.

16. The method of claim 8 wherein said wagering formats include interstate wagering, game types and game formats.

17. The method of claim 8 wherein said incoming communications from said prospective wagerers are made from a telephone.

5,921,865

**13**

**18.** The method of claim **8** wherein said incoming communications from said prospective wagerers are made from a computer.

**19.** The method of claim **18** wherein said incoming communications from said prospective wagerers are made from a computer network. 5

**20.** The method of claim **19** wherein said computer network comprises the Internet.

**21.** The method of claim **8** further comprising a step of requesting said prospective wagerers to select a form of payment for said wager. 10

**22.** The method of claim **8** further comprising a step of requesting said prospective wagerers for enrollment information.

**23.** Method for automatically accepting a plurality of different wagering formats over a computer system, comprising: 15

receiving incoming telephone calls from prospective wagerers and routing each of said calls according to which one of said plurality of different wagering formats is requested by a caller; 20

providing a series of messages requesting subscriber information particular to said one or more of the plurality of wagering formats requested by the caller;

**14**

requesting identifying information from said prospective wagerers; and

requesting said prospective wagerers to enter a wager.

**24.** A method of automatically accepting a plurality of different wagering formats over a computer system, comprising:

receiving incoming computer communications from prospective wagerers and routing each of said communications according to which one of said plurality of different wagering formats is requested by a subscriber;

providing a series of messages requesting subscriber wagering information particular to said one or more of the plurality of wagering formats selected by said subscriber;

requesting identification from said prospective wagerers; and

requesting said prospective wagerers to enter a wager.

**25.** The method of claim **24** wherein said incoming computer communications are from a computer network.

**26.** The method of claim **25** wherein said computer network comprises the Internet.

\* \* \* \* \*

**UNITED STATES PATENT AND TRADEMARK OFFICE  
CERTIFICATE OF CORRECTION**

**PATENT NO.** : 5,921,865  
**DATED** : July 13, 1999  
**INVENTOR(S)** : John B. Scagnelli, Joseph A. Fiscella

It is certified that errors appear in the above-identified patent and that said Letters Patent is hereby corrected as shown below:

**Title page, item [56],**  
On cover page: Please add the following references

4,792,968	12/1988	Katz .....	379/92
4,845,739	7/1989	Katz .....	379/92
4,922,522	5/1990	Scanlon .....	463/17
4,996,705	2/1991	Entenmann et al. ....	463/41

**Signed and Sealed this  
Eleventh Day of January, 2000**

Attest:



**Q. TODD DICKINSON**

*Attesting Officer*

*Acting Commissioner of Patents and Trademarks*