

1 ADAM J. GUTRIDE (State Bar No. 181446)  
2 SETH A. SAFIER (State Bar No. 197427)  
3 TODD KENNEDY (State Bar No. 250267)  
4 GUTRIDE SAFIER LLP  
5 835 Douglass Street  
6 San Francisco, California 94114  
7 Telephone: (415) 271-6469  
8 Facsimile: (415) 449-6469

9 VICTORIA L.H. BOOKE (State Bar No. 142518)  
10 PETER AJLOUNY (State Bar No. 192322)  
11 BOOKE & AJLOUNY LLP  
12 606 North First Street  
13 San Jose, California 95112  
14 Telephone: (408) 286-7000  
15 Facsimile: (408) 286-7111

16 Attorneys for Plaintiff

17 UNITED STATES DISTRICT COURT  
18 CENTRAL DISTRICT OF CALIFORNIA  
19 WESTERN DIVISION

20 INNOVATIVE AUTOMATION LLC,

21 Plaintiff,

22 v.

23 SYSTOR SYSTEMS, INC.,

24 Defendant.

CV11-2169 R(FFM)

CASE NO.

COMPLAINT FOR PATENT  
INFRINGEMENT

DEMAND FOR JURY TRIAL

Date: March 11, 2011

2011 MAR 14 PM 3:42  
CLERK U.S. DISTRICT COURT  
CENTRAL DISTRICT CALIF.  
LOS ANGELES

FILED

25 Plaintiff Innovative Automation LLC states its complaint against  
26 Defendant Systor Systems, Inc. and alleges as follows:  
27  
28

**THE PARTIES**

1  
2 1. Plaintiff Innovative Automation LLC (“Plaintiff” or “Innovative  
3 Automation”) is a limited liability company organized and existing under the  
4 laws of the State of California, with its principal place of business at 606  
5 North First Street, San Jose, California 95112.

6 2. Upon information and belief, Defendant Systor Systems, Inc.  
7 (“Defendant” or “Systor”) is a corporation organized and existing under the  
8 laws of the State of California, with its principal place of business at 4010  
9 West Valley Boulevard #105, Walnut, California 91789.

10 **JURISDICTION AND VENUE**

11 3. This action is for patent infringement pursuant to the patent laws  
12 of the United States, 35 U.S.C. §§ 1 *et seq.* This Court has subject matter  
13 jurisdiction over the action pursuant to 28 U.S.C. §§ 1331 and 1338(a).

14 4. This Court has personal jurisdiction over Systor because, on  
15 information and belief, Systor does and has done substantial business in this  
16 judicial District, including (i) maintaining its principal place of business in  
17 this judicial District; (ii) committing acts of patent infringement and/or  
18 contributing to or inducing acts of patent infringement by others in this  
19 judicial District and elsewhere in California; and (iii) regularly doing  
20 business or soliciting business, engaging in other persistent courses of  
21 conduct, and/or deriving substantial revenue from products provided to  
22 persons in this judicial District and in this State.

23 5. Venue is proper in this judicial District pursuant to 28 U.S.C. §§  
24 1391 and 1400(b) because Systor resides in this judicial District, and  
25 because a substantial part of the events giving rise to the claims occurred in  
26 this District.

1  
2  
3  
4  
5  
6  
7  
8  
9  
10  
11  
12  
13  
14  
15  
16  
17  
18  
19  
20  
21  
22  
23  
24  
25  
26  
27  
28

**CLAIM FOR RELIEF**

**(Infringement of United States Patent No. 7,174,362)**

6. Plaintiff realleges and incorporates by reference the above paragraphs of this Complaint, inclusive, as though fully set forth herein.

7. Plaintiff is the owner of all right, title, and interest in United States Patent No. 7,174,362, entitled “Method and System for Supplying Products from Pre-Stored Digital Data in Response to Demands Transmitted via Computer Network,” duly and legally issued by the United States Patent and Trademark Office on February 6, 2007 (the “‘362 patent”). A true and correct copy of the ‘362 patent is attached hereto as Exhibit A.

8. The ‘362 patent generally describes and claims a computer-implemented method of digital data duplication. In the method of claim 1 of the ‘362 patent, a request is taken at one or more user interfaces and is transmitted through a network to a computer. The computer contains a module to create a task log based on incoming requests; a module for storing the necessary data; and a module to create a subset of the data, download that subset to an output device, and command the device to transfer the subset onto blank media. The request is assigned to an output device, and the duplication process is executed. Claims 2-8 of the ‘362 patent describe various other methods and a system of digital data duplication.

9. Systor has infringed and continues to infringe, literally and/or under the doctrine of equivalents, one or more claims of the ‘362 patent under 35 U.S.C. § 271 by making, offering to sell, and selling infringing media duplication devices. For example, Systor’s 1 to 15 SATA Network-Ready CD DVD Duplicator device (“SYS15SNET”) takes requests at a user interface and transmits them through a network to a computer. (See, e.g., Ex. B.) The computer contains a module to create a task log based on incoming

1 requests; a module for storing the necessary data; and a module to create a  
2 subset of the data, download that subset to an output device, and command  
3 the device to transfer the subset of data onto blank media. (See, e.g., *id.*)

4 The Systor SYS15SNET assigns the requests to output devices, and the  
5 duplication process is executed. (See, e.g., *id.*) Systor's products that  
6 operate in this way infringe, without limitation, claim 1 of the '362 patent  
7 under 35 U.S.C. § 271.

8       10. On information and belief, Systor has knowledge that its  
9 infringing products, including without limitation the Systor SYS15SNET,  
10 are especially made or especially adapted for use in a manner that infringes  
11 the '362 patent. For example, Systor's infringing products are made or  
12 adapted to be connected to a network to perform the method of digital data  
13 duplication claimed in the '362 patent. Systor's infringing products are not  
14 staple articles or commodities of commerce suitable for substantial  
15 noninfringing use.

16       11. As a result of Systor's infringing activities, Plaintiff has suffered  
17 damages in an amount not yet ascertained. Plaintiff is entitled to recover  
18 damages adequate to compensate it for Systor's infringing activities in an  
19 amount to be determined at trial, but in no event less than reasonable  
20 royalties, together with interest and costs.

21       12. Plaintiff reserves the right to allege, after discovery, that Systor's  
22 infringement is willful and deliberate, entitling it to increased damages under  
23 35 U.S.C. § 284, and to attorneys' fees incurred in prosecuting this action  
24 under 35 U.S.C. § 285.

1  
2  
3  
4  
5  
6  
7  
8  
9  
10  
11  
12  
13  
14  
15  
16  
17  
18  
19  
20  
21  
22  
23  
24  
25  
26  
27  
28

**PRAYER FOR RELIEF**

WHEREFORE, Plaintiff Innovative Automation requests entry of judgment in its favor against Systor as follows:

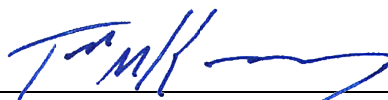
- a) For a declaration that Systor has infringed, directly and/or indirectly, the ‘362 patent;
- b) For an award of damages adequate to compensate Plaintiff for Systor’s infringement of the ‘362 patent, but in no event less than a reasonable royalty, together with prejudgment and post-judgment interest and costs, in an amount according to proof;
- c) For an entry of a permanent injunction enjoining Systor, and its respective officers, agents, employees, and those acting in privity with them, from further infringement, including contributory infringement and/or inducing infringement, of the ‘362 patent, or in the alternative, awarding a royalty for post-judgment infringement;
- d) For an award of attorneys’ fees pursuant to 35 U.S.C. § 285 or as otherwise permitted by law; and
- e) For an award to Plaintiff of such other costs and further relief as the Court may deem just and proper.

1  
2  
3  
4  
5  
6  
7  
8  
9  
10  
11  
12  
13  
14  
15  
16  
17  
18  
19  
20  
21  
22  
23  
24  
25  
26  
27  
28

**DEMAND FOR JURY TRIAL**

Pursuant to Rule 38(b) of the Federal Rules of Civil Procedure,  
Plaintiff respectfully requests a trial by jury.

Dated: March 14, 2011



---

Adam J. Gutride, Esq.  
Seth A. Safier, Esq.  
Todd Kennedy, Esq.  
GUTRIDE SAFIER LLP  
835 Douglass Street  
San Francisco, California 94114  
Telephone: (415) 789-6390  
Facsimile: (415) 449-6469

Victoria L.H. Boone  
Peter Ajlouny  
BOOKE & AJLOUNY LLP  
606 North First Street  
San Jose, California 95112  
Telephone: (408) 286-7000  
Facsimile: (408) 286-7111

Attorneys for Plaintiff  
Innovative Automation LLC

# **Exhibit A**

(12) **United States Patent**  
**Lee**

(10) **Patent No.:** US 7,174,362 B1  
 (45) **Date of Patent:** Feb. 6, 2007

(54) **METHOD AND SYSTEM FOR SUPPLYING PRODUCTS FROM PRE-STORED DIGITAL DATA IN RESPONSE TO DEMANDS TRANSMITTED VIA COMPUTER NETWORK**

*Primary Examiner*—Moustafa M. Meky  
 (74) *Attorney, Agent, or Firm*—Jeffrey Sonnabend; SonnabendLaw

(57) **ABSTRACT**

- (76) Inventor: **Sungil Lee**, 3219 Cantada Ct., San Jose, CA (US) 95112
- (\* ) Notice: Subject to any disclaimer, the term of this patent is extended or adjusted under 35 U.S.C. 154(b) by 1447 days.
- (21) Appl. No.: **09/718,286**
- (22) Filed: **Nov. 21, 2000**
- (51) **Int. Cl.**  
**G06F 13/00** (2006.01)
- (52) **U.S. Cl.** ..... **709/203; 709/217; 709/219**
- (58) **Field of Classification Search** ..... **709/203, 709/217, 218, 219, 226, 227; 369/84, 85**  
 See application file for complete search history.

The present invention relates to a digital data duplication system that utilizes one or more computer networks to automate the process from order-taking to delivery, eliminating the need for human supervision. Customers enter requests for a given number of machine-readable articles containing digital data, typically compact disks. The requests are transferred to a website, which sends to a server electronic mails containing the details of the requests. Upon receiving an electronic mail, the server directs a printing device to produce mailing labels for shipment. The server has an internal archive of all data it uses to convert blank CD-Rs into the requested CDs, and is connected to a series of CD-R writing machines. The server schedules each request, downloads necessary data onto the CD-R writing machine that is assigned a particular request, and sends a write command. The CD-R writing machine subsequently transfers the data in its cache onto the pre-loaded CD-Rs. After the data transfer is complete, the CDs embodying the requested information are automatically placed in a bin for shipment.

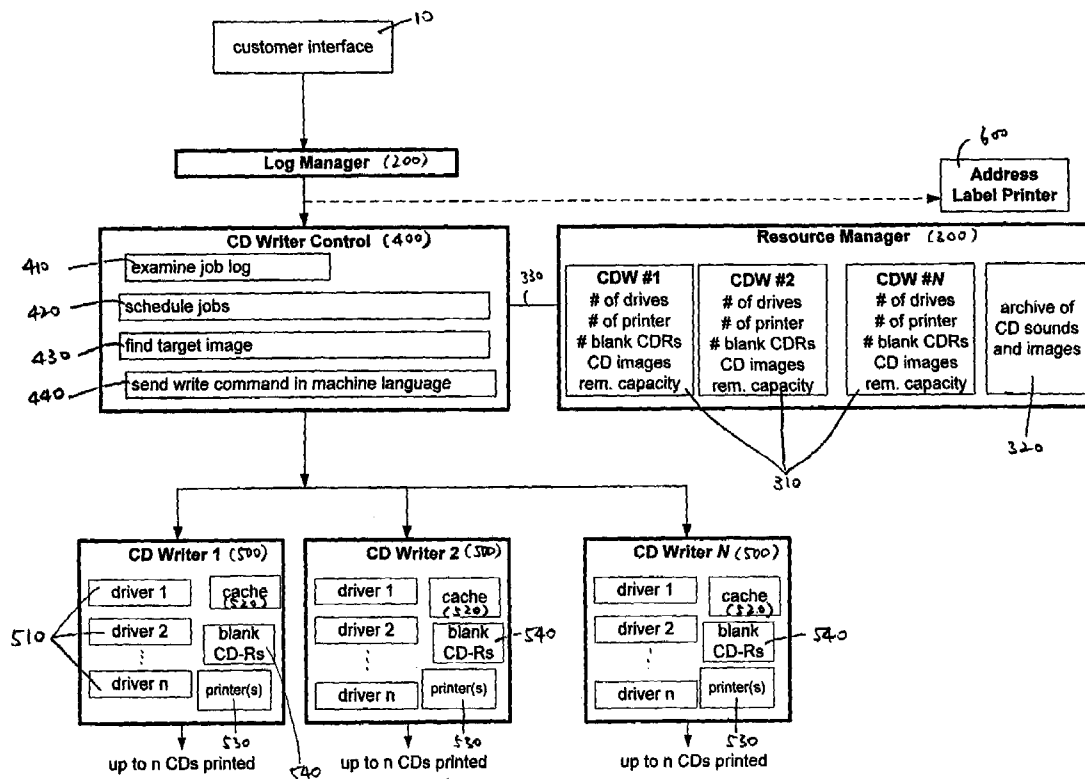
(56) **References Cited**

U.S. PATENT DOCUMENTS

- 6,141,298 A \* 10/2000 Miller ..... 369/30.33
- 6,208,612 B1 \* 3/2001 Miller ..... 369/30.19
- 6,499,106 B1 \* 12/2002 Yaegashi et al. .... 713/193
- 2002/0046215 A1 \* 4/2002 Petrocelli ..... 707/200

\* cited by examiner

**8 Claims, 4 Drawing Sheets**





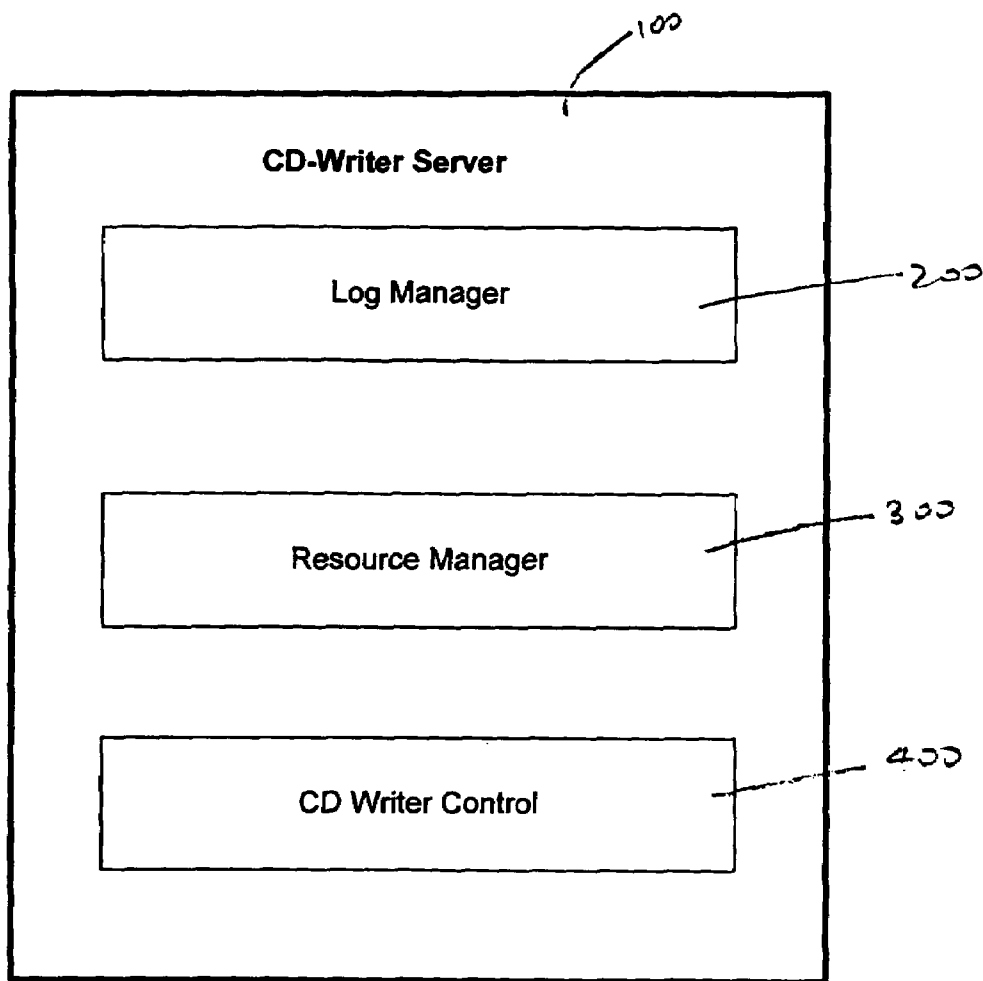


FIG. 1

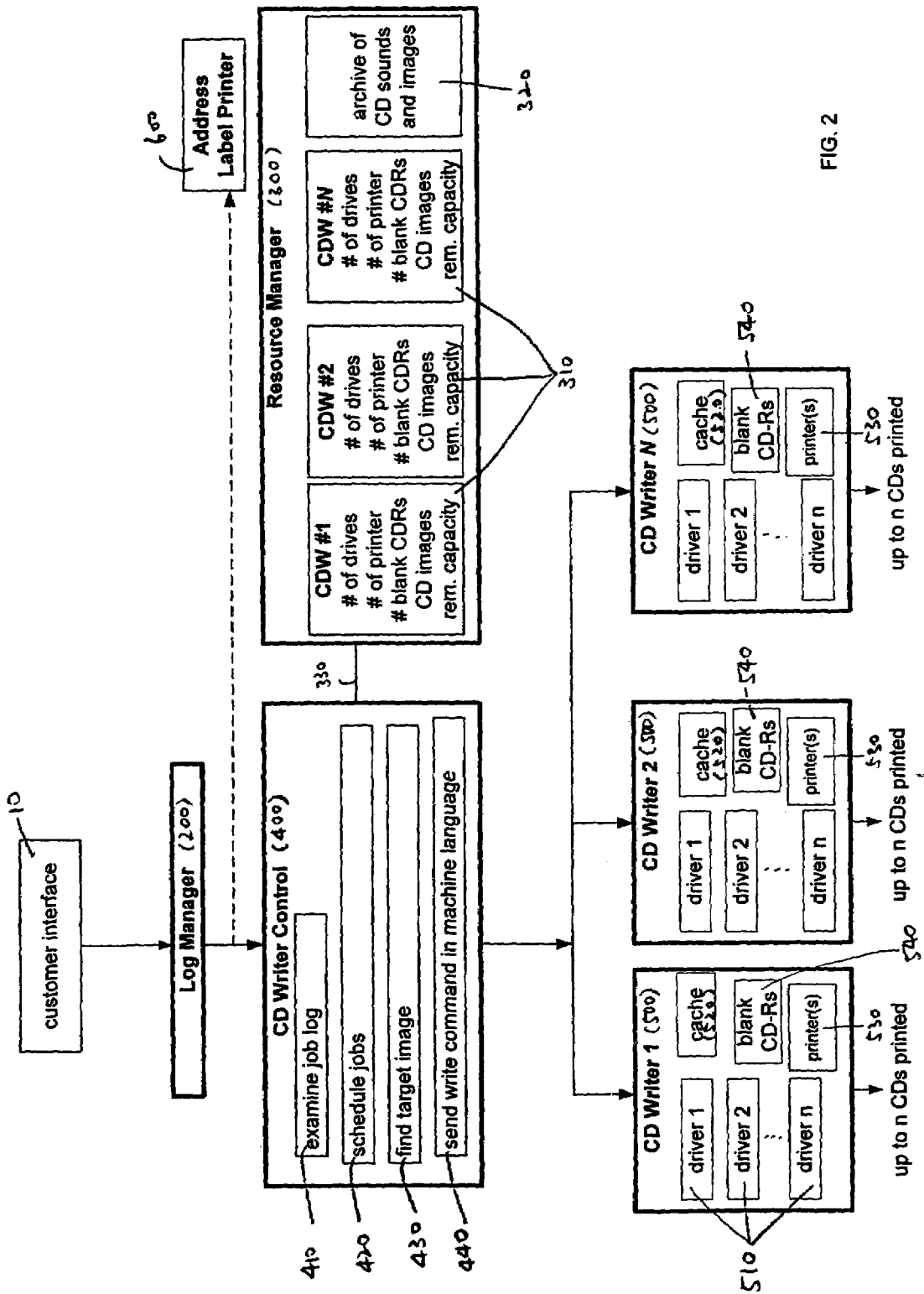


FIG. 2

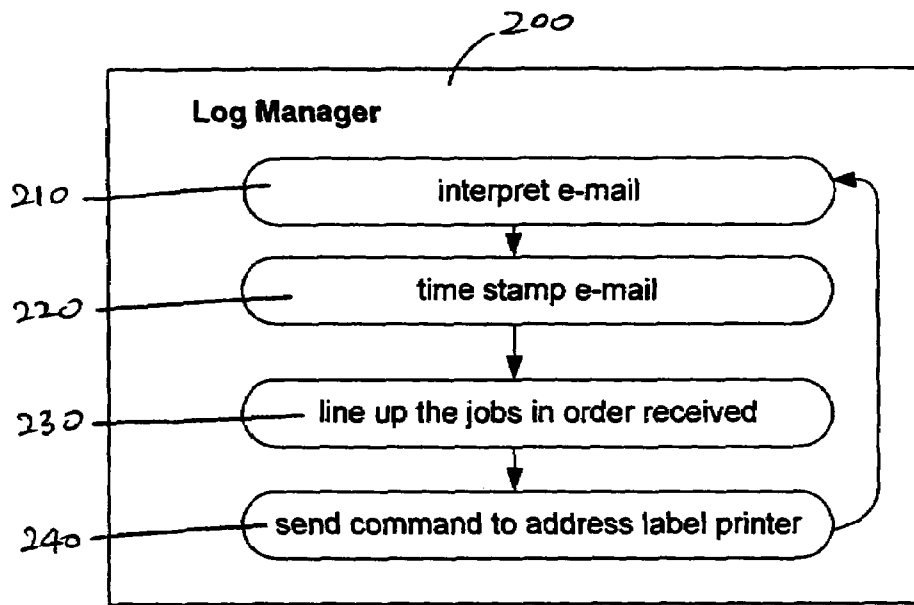


FIG. 3

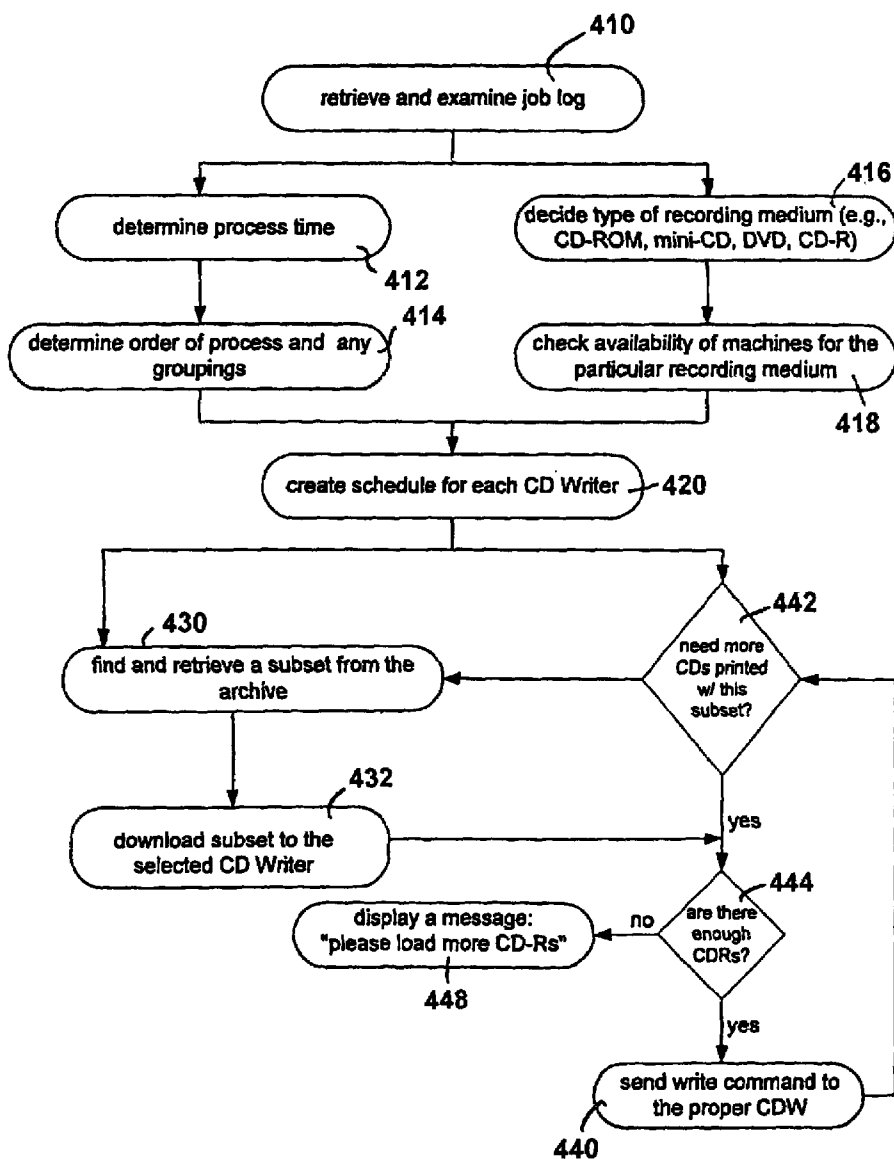


FIG. 4

US 7,174,362 B1

1

**METHOD AND SYSTEM FOR SUPPLYING  
PRODUCTS FROM PRE-STORED DIGITAL  
DATA IN RESPONSE TO DEMANDS  
TRANSMITTED VIA COMPUTER  
NETWORK**

**BACKGROUND OF THE INVENTION**

**1. Technical Field**

The present invention relates to a digital data duplication system that utilizes one or more computer networks to automate the process from order-taking to product delivery. More specifically, the invention permits users of CD duplication services to directly place requests into a server, which then schedules production, allocates resources, executes duplication, and sorts the products for shipment.

**2. Description of Related Art**

Before the advent of recordable digital compact disks (hereinafter "CD-Rs"), the transfer of data onto compact digital disks was a costly procedure, economically feasible only when manufacturing a large number of copies. Users whose applications required relatively few copies or required frequent data updates could not reap the benefits of this compact disk duplication technology, even though low-cost disk-readers were readily available.

The advent of CD-R was intended to allow users to record their own disks and thereby achieve significant savings. Unlike a common compact disk that has been pressed by a mold, a CD-R typically has a dye layer that is etched by a laser contained in the CD-R disk drive. Once etched, the "burned" CD-R disk is unalterable.

Several practical problems have prevented CD-R users from attaining maximal efficiency in the copy process, especially when attempting to make multiple disk copies in a short amount of time. One of the problems that typically arise in a volume copying process using CD-R writers is the necessity for direct human supervision. A person has to prepare CD-R disks for copying, remove the disks from the CD-R writer once copying is complete, and then prepare the disks for inspection to ensure no defective CD-R disks are retained in the completed set of copies. Aside from the tedium involved that may increase errors, requiring human attention in this process adds a significant labor cost that is added to the end-user price.

One solution to the human supervision problem is a programmable, automatic compact disc duplication system. That system, which includes a copy unit, a host computer and a computer software that provides a user interface, is further discussed in U.S. Pat. No. 6,141,298, incorporated herein by reference. While the system in the above patent eliminates some of the manual steps that creates inefficiency, it still leaves many steps to be handled by operators.

**SUMMARY**

The present invention relates to a method and system of taking customer requests and writing the requested digital data onto various digital recording media, such as CD-ROMs, CDs, mini-CDs, or DVDs. Using this method, a customer can request any quantity of a specific CD, mini-CD, or DVD through an electronic commerce transaction system or a website and have a server automatically process the request so that it is ready for delivery. Upon order entry, the customer interface website first sends an electronic mail (e-mail) to a CD Writer Server. The e-mail triggers the CD Writer Server to update a log of requests and send signals to one or more printing devices that prepare address labels for

2

delivery. Once the log is updated, the CD Writer Server schedules the requests based on estimated process time, availability of the appropriate output device, suitability of particular devices for handling a particular request, among other characteristics. Information on process time is obtained from an internal archive of the digital data used to produce the ordered CDs. Likewise, the information concerning the availability of each output device in the system is found in internal resource files. When scheduling is complete, the CD Writer Server converts the e-mail requests into machine language and sends write commands to designated output devices.

One important object of the present invention is to cost-effectively duplicate CDs using CD writers in response to requests received from remote customers. The present invention removes the inefficiency associated with human supervision, and eliminates the need for inventory.

**BRIEF DESCRIPTION OF THE DRAWINGS**

FIG. 1 is a schematic depiction of the three modules comprising a CD Writer Server.

FIG. 2 is a block diagram depicting the process flow from order receipt to production.

FIG. 3 is a schematic depiction of the functions of the Log Manager.

FIG. 4 is a schematic depiction of the functions of CD Writer Control.

**DETAILED DESCRIPTION**

The present method and system relate to conducting a business that supplies any type of written or printed material, such as invitations, books, cards, and similar materials that can be mechanically produced from an archive of digital information. In one embodiment, the present invention is adapted to produce various digital recording media, such as CD-ROMs, CDs, mini-CDs, and DVDs (hereinafter collectively referred to as CDs). The invention is implemented through a computer system herein referred to as CD Writer Server. CD Writer Server **100** processes customer requests by using three modules that work together: Log Manager **200**, Resource Manager **300**, and CD Writer Control **400** (see FIG. 1). A "module," as used herein, refers to the functionality and not the configuration of components.

The CD Writer Server **100** typically resides on an e-mail server because the CD Writer Server commonly communicates with the customer interface **10** via e-mails. The order fulfillment process is triggered when a customer enters a request through a customer interface **10**. A customer interface includes but is not limited to a website, a web server, an electronic commerce transaction system, a customized start page, or an e-mail subsystem. At the interface, the customer is prompted to provide 1) the content(s) he wants duplicated, for example identifiers of songs, movies, or software, 2) the desired quantity, 3) personal information such as the name, address, and phone number of the customer, 4) the desired shipping method, 5) the due date, and 6) a payment or a method of payment, such as a credit card number, among other information. After the request has been entered and the CD Writer Server **100** has scheduled the request, the customer may be able to see an estimated delivery date at the interface **10**.

The present system manages payment at the customer interface **10**, either through an e-commerce transaction system involving a credit card number, or through an account number to which charges can be made. Managing payment

US 7,174,362 B1

3

through an e-commerce system significantly reduces the amount of human supervision that is required.

As shown in FIG. 2, the CD Writer Server 100 module that first receives an e-mail order from the customer interface is Log Manager 200. FIG. 3 shows that upon receiving an e-mail, Log Manager 200 first interprets it 210 and extracts certain information, including but not limited to the mailing address. Then, Log Manager 200 time-stamps each incoming e-mail 220 and lines it up in the order of receipt 230, creating a log that CD Writer Control 400 can eventually retrieve and process. In addition, Log Manager 200 sends the extracted mailing address information 240 to an address label printer 600. The printer 600 is optionally attached to the CD Writer Server 100. Log Manager 200 repeats 250 the process with each incoming e-mail request, updating the log with each request.

After Log Manager updates the log, CD Writer Control 400 retrieves the log and examines it 410 in conjunction with the information stored in Resource Manager to schedule the production of CDs. The information CD Writer Control retrieves from Log Manager 200 pertains to the specifics of a request, such as the order quantity and the requested content. In contrast, the information stored in Resource Manager 300 pertains to hardware configuration and digital data that represent contents that can be transferred to a blank medium. As FIG. 2 shows, Resource Manager maintains two types of files: a set of resource files 310, one file for each of the output devices controlled by CD Writer Server, and an archive 320 of all the sounds, images, and characters used to execute the duplication requests.

In one embodiment, there are as many resource files 310 in Resource Manager 300 as there are output devices (hereinafter CD Writers) 500. For example, Resource Manager 300 shown in FIG. 2 stores N resource files 310 because there are N CD Writers 500. Each resource file contains the name and the IP address of each CD Writer 500, the number of drives and printers in each of those machines, and the number of blank CD-Rs remaining in each machine, among other information. Moreover, the resource file 310 keeps track of which data from its archive 320 has been copied to the internal cache 520 of each CD Writer 500 and how much cache space remains in each machine. The latter information becomes important when some data needs to be purged in order to download new data. As FIG. 2 shows, Resource Manager 300 and CD Writer Control 400 maintain close communication 330 so that every time CD Writer Control 400 sends a write command 440 to one of the CD Writers 500, Resource Manager 300 can update the resource file 310 for that CD Writer.

As mentioned above, Resource Manager 300 also stores an archive 320 of all the sounds, images, and characters used to produce the requested CDs. The archive can be internally indexed by part numbers, each part number being associated with a path name. In one, the hard drive of Resource Manager 300 was designed to hold at least 1,000 CD contents along with corresponding graphics, which are to be physically printed on the CDs (the number of contents the archive can hold depends on the amount of data that each content corresponds to). In order to change or update the contents of the archive, an operator would have to delete some of the existing data and download new data from a network or a digital storage medium.

CD Writer Control 400 retrieves information from both Log Manager 200 and Resource Manager 300 to schedule production for each CD Writer 500 connected to the system. In order to optimize production, CD Writer Control 400 must first calculate the process time for each order 412. This

4

calculation is performed by first reading the title of the requested songs or movies from the order log and looking up the size of those songs or movies in the Resource Manager archive. Then, CD Writer Control 400 can schedule the requests according to whatever criteria that best suits the business (i.e., it can be programmed). For example, it can schedule the duplication jobs in the order that the requests were received, to ensure that between two requests with approximately equal process times, the request that was received first will be processed first. Alternatively, it can prioritize the request with a closer due date or an order marked "high priority." Furthermore, if there are multiple orders requesting the same content, CD Writer Control 400 can group those orders so that they can be produced together 414 (but the mailing address labels would be different for each order). Other factors may only be taken into account in the scheduling algorithm.

Since there are different types of CD Writers 500 (for example, CD Writers for DVDs and CD Writers for mini-CDs) with different cache 520 contents and varying numbers of drives 510, scheduling involves careful selection of a CD Writer for each job. CD Writer Control 400 selects (416, 418) a CD Writer 500 based on the hardware configuration data stored in Resource Manager's resource files 310. CD Writer Control 400 would send a job to the next available CD Writer 500 of the appropriate type that already has the requested content in its cache 520. For optimal production, as many machines as possible would be processing orders concurrently.

Once scheduling is complete, CD Writer Control tells the designated CD Writer to begin the duplication process by sending a "write" command in the appropriate machine language 440. However, before sending the "write" command, CD Writer Control 400 must check to make sure there are enough blank CD-Rs 540 loaded in the particular machine, as shown in FIG. 4. CD-R, as used herein, refers to any kind of medium onto which data can be fixed, printed, embodied, or stored, and from which the information fixed, printed, embodied, or stored therein can be perceived, reproduced, used, or otherwise communicated, either directly or indirectly with the aid of a device. Each CD Writer can be designed to hold as many number of CD-Rs as is practical. If there is an insufficient number of blank CD-Rs remaining, CD Writer Control notifies the operator with a short message 448. If there are enough blank CD-Rs, CD Writer Control will send the write command for the proper number of CDs 440. Note that the maximum number of CDs that can be written and printed with one "write" command is equal to the number of drives in the CD Writer that is processing the order (shown as n in FIG. 4). Thus, CD Writer Control repeatedly sends 446 a "write" command to the designated machine until the requested number of CDs have been produced. When a request is fulfilled, CD Writer Control 400 proceeds to the next request scheduled for the particular CD Writer.

In the event that no CD Writer of the appropriate type contains the requested data in its cache, CD Writer Control must check whether there is enough cache space left in the machine and download 432 the necessary data onto that machine from the Resource Manager internal archive. Only after downloading is complete can the CD Writer Control send its "write" command, which directs the CD Writers to transfer a specific subset of data from their cache to the blank CD-Rs. In one embodiment, each CD Writer is designed to hold up to about 200 CD images and printer graphics (depending on the size of the images).

US 7,174,362 B1

5

Writing a CD entails not only transferring digital data from the cache 520 to the blank CD-Rs 540, but also printing certain graphics on the surface of the mediums. Thus, each CD Writer must be equipped with at least one printing device 530.

While the present invention is illustrated with particular embodiments, it is not intended that the scope of the invention be limited to the specific and preferred embodiments illustrated and described.

I claim:

1. A computer-implemented method of digital data duplication comprising:

- taking requests at one or more user interfaces;
- transmitting said requests through a network to a computer;
- assigning each of said requests to one of a plurality of output devices; and
- executing the duplication process,

wherein said computer comprises:

- at least one first module configured to create a task log based on incoming requests;
- at least one second module configured to store all data necessary for executing said duplication process;
- at least one third module configured to create a subset of said data stored in said second module, further configured to download said subset to one of said output devices, and further configured to command said output device to transfer said subset onto blank media; and
- a connection through which said second module communicates with said first module and said third module.

2. The method of claim 1, wherein said data stored in said second module comprises:

- an expandable indexed archive of digital data, said data representing contents available for request by customers; and
- at least one resource file for each of said output devices in communication with said computer.

3. The method of claim 2, wherein said data in each said resource file comprise:

- name and type of said output devices;
- network address of said output device;
- number of drives in said output device;
- availability of said output device;
- number of blank recording mediums pre-loaded in said output device;
- index of digital data that has been downloaded onto said output device; and
- hard drive capacity remaining in said output device.

4. The method of claim 1, wherein said first module is configured to send at least one signal to at least one printing device to create mailing address labels for each of said requests.

6

5. The method of claim 1, wherein assigning said requests comprises:

- grouping together requests for the same content;
- directing said requests to the most immediately available output device that is capable of making the requested duplication onto the requested type of recording medium;
- tracking the number of recording mediums remaining in each output device;
- notifying an operator if more recording mediums need to be loaded;
- finding the digital data that corresponds to the requested content;
- sending a write command to said output device in the format that said output device understands;
- waiting for the output device to perform the requested number of duplications;
- repeating the above steps each time a new request is entered.

6. The method of claim 5, wherein finding the digital data comprises:

- checking the cache of said output devices for data representing the requested content(s);
- deleting enough pre-existing data in said cache to make room for said requested content; and
- downloading said requested content from said computer onto said cache of said output device.

7. The method of claim 1, wherein each module that comprises said computer is responsive to electronic mail commands.


8. A system for duplication of data onto digital recording mediums, the system comprising:

- a customer interface; and
- a communication network connecting said customer interface to a server that schedules and process duplication; wherein said server comprises:
  - first module for creating a log of customer requests;
  - second module for storing the data to be duplicated;
  - third module for scheduling the duplication of each request and directing each request to one of a plurality of output devices;
- at least one printing device for producing mailing labels for each request; and
- at least one output device for transferring the data requested by customers from an internal data storage onto digital recording mediums.


\* \* \* \* \*

# **Exhibit B**





**Disc Master**  
Full Color Disc Printing & Publishing  
Solutions from SySTOR SYSTEMS



866.444.1876 / 909.444.2590 | M-F 7:30AM - 5:30PM PST

[HOME](#) | [BASKET CONTENTS](#) | [CHECKOUT](#) | [SIGN IN](#) | [CONTACT](#)

[CD/DVD Duplicator Tower](#)

[Auto Duplicator](#)

[Auto Printer](#)

[Auto Publisher](#)

[Storage Memory Duplicator](#)

**European Buyers**   
[www.duplicator4all.com](http://www.duplicator4all.com)

**1 to 15 SATA Network-Ready CD DVD Duplicator w/ 500GB HDD & USB Connection**

Price: **\$1,565.00**

Quantity in Basket: *None*

Code: **SYS15SNET**

Shipping Weight: **67.00** lb

Quantity:

[Add To Basket](#)



[Features](#)

**1 to 15 SATA Network-Ready CD/DVD Duplicator:** Introducing the next level in standalone duplication towers, the network capable. This is not only the most advanced duplicator on the market, but is extremely simple to use. With the ability to connect to any PC within a given network offers convenience and security for any size office environment. The network connectivity feature means it does not require the person loading the file(s) be near or even in the same room as the duplicator. This allows a company to keep any quantity of manual tower duplicators in a safe optimal environment where users can transfer files directly onto the duplicator as opposed to the longer and more time consuming process of generating a master disc then loading it into the duplicator manually. Plus, by being able to sequester the duplicator into a secure environment, where only authorized personnel can access it, provides a security feature preventing general employees from being able to make copies of unauthorized sensitive or confidential files. With the ability to copy all CD configurations, all DVD configurations including Dual/Double Layer discs and print LightScribe files. This is the perfect solution for your duplication needs.

**Complete Standalone Operation:** No PC required to operate the duplicator.

**Transfer files from any PC within an internal Network directly to the duplicator:** Connect the duplicator to the company's internal network by LAN/Ethernet connection and transfer the image or file(s) that need to be duplicated directly to the duplicator. No longer need to burn a master disc to initiate the duplication process.

**Improved Load and Copy Supported:** Improved "Load and Copy" to make duplication from Hard Drive faster than ever by simultaneously copy into the blank media while Loading to the hard drive.

**New Continuous Hard Drive Partitioning:** The HDD partitions are created without limitations using the same amount of space as the actual content size on the disc. No longer do you have to worry about losing valuable HDD capacity because your duplicator allocates the exact space required without wasting space like standard partitions on other controllers.

**Industry leading 256MB buffer memory:** Keeps all drives burning without pausing (known as buffer underrun) for the most stable and reliable high speed duplication - The higher the memory buffer the less likely to encounter buffer underrun errors. This feature is only available on specific models.

**New Supports all common CD Formats with Additional Special format including CD-TEXT, ISRC, Over-Burned CD.**

**Improved Drive firmware upgradeability:** Capable of upgrading the drives for selected brands through the Duplicator.

**Improved Multi-Language capability:** The text on the LCD screen can be displayed in English, Spanish, French, Japanese & more. Chinese can be added upon request.

**AutoCopy feature:** Fast duplication without pressing any buttons.

**Account management (password protection):** This function will authorize only specific user(s) to operate the duplicator with their preferred settings. Able to assign numerous passwords for multiple users.

**Auto-Counter Technology:** Displays the total number of discs successfully copied compared to desired output for each project.

**Hard Drive Partition/Image Name Editing:** Simply stated you can name the images stored on the hard drive partitions.

**User friendly interface with 'easy-to-read' LCD display:** Offers easy to recognize and use terms and operations on the LCD display for simple usage.

**Aluminum Case used to provide a highly functional and attractive exterior:** Duplicator casing available in metallic silver or midnight black aluminum casing.

**Fast Key Support:** 4 fast keys for faster operations.

**Power on Self diagnostics:** Keeps the duplicator functioning optimally.

**Disc Info feature:** Provides the format of the disc & the disc manufacturer's information.

**Selectable Disc burning speeds:** Ability to increase or decrease duplication speed for supported formats.

**Auto DVD Format Conversion:** Can convert media between DVD+R/RW and DVD-R/RW automatically.

**Creates mix compilation audio CD:** Able to compile multiple tracks onto a single disc from multiple sources.

**Supports both Disk-at-Once and Track-at-Once modes**

**Automatic format recognition:** Duplicator recognizes automatically if the discs are CD or DVD as well as the correct format to copy.

**Upgradeable for future drive technology:** Able to upgrade duplicator for installation of future drives.

**Future functions upgradeable through firmware:** Duplicator able to upgrade future software updates via Firmware.

**Continuous copying without waiting for cool down:** No need to stop the duplicator for fear of overheating.

**High-speed USB 2.0 Connection:** When connected to a computer using this external connection, the built-in hard drive on the duplicator interacts directly with your computer (This is NOT MAC compatible)

#### Specifications

**Model:** SATA CD DVD Tower Duplicator  
**Operating Type:** Stand-alone with Network Connectivity  
**Buffer Memory:** Up to 256MB (the largest memory buffer available on the market)  
**Account Management:** 32 users (Standard License) or 64 users (Premium License)  
**Partition Naming:** Up to 14 Characters Per Partition  
**Internal Interface:** Serial ATA (SATA)  
**Auto Counter:** Yes  
**Language Support:** English, Spanish, French, German, Italian, Japanese, and more (Chinese and Arabic can be ordered on request)  
**Network Connectivity:** Network Port: RJ-45 x 1  
**Requirements:** Network Speed: 10/100Mbps. Additional Ports: USB 2.0. OS Support: Windows 2000, XP, Vista 32 Bit  
**Display:** 20 x 2 Blu-ray LCD  
**Hard Drive:** 500 GB  
**Reader/Source:** 500 GB Hard Drive  
**Writer/Target:** SATA Dual Layer DVD+/-RW Burner  
**Maximum Write Speed:** 24X DVD-R / +R  
 12X DVD-R DL (Dual Layer), +R DL (Double Layer)  
 8x DVD+RW  
 8x DVD +R9  
 6X DVD-RW  
 12X DVD-RAM  
 48X CD-R  
 32X CD-RW  
**Media Supported:** DVD-ROM, DVD-Video, DVD-Audio, DVD+R Double Layer, DVD-R Dual Layer, DVD-R, DVD-RW, DVD+R, DVD+RW, CD-ROM (Mode1 & Mode2), CD-ROM/XA (Mode2 form1 & form2), CD-DA, Mixed-Mode, Video CD, CD-I, Karaoke CD(VCD), Photo CD (Single & Multi-session), CD-Extra, HFS, CD-Bridge, ISO9660, CD-R, CD-RW Business Card CD-R, 3" Mini CD-R  
**Firmware Upgradeable:** Yes  
**Burn Proof Support:** Yes  
**Power Supply:** Input : 90 ~ 240 V, Up to 500 WATT max (based on the size and number of drives)  
**Operating Humidity:** 20% ~ 80%  
**Temperature Extremes:** 40 C (104 F) / 5 C (41 F)  
**Regulations:** FCC, CE, RoHS, UL  
**Note:** The software is only compatible with a PC and not recognized on MAC computers. This machine does not burn any copy protected BDs, DVDs or CDs. The actual maximum writing speed may vary. Blank media writing speed is determined by the drives, regardless of what the media manufacturer certifies the blank media writing speed at 8x

**Throughput Capacity Per Hour:**

Target	1	2	3	4	5	6	7	8	9	10	11	12	13	14	15
<b>300 MB CD *at 52x duplication speed</b>	30	60	90	120	150	180	210	240	270	300	330	360	390	420	450
<b>2.5 GB DVD *at 20x duplication speed</b>	15	30	45	60	75	90	105	120	135	150	165	180	195	210	225
<b>12.5 GB Blu-Ray *at 4x duplication speed</b>	4	8	12	16	20	24	28	32	36	40	44	48	52	56	60

**Actual maximum speed may vary. Blank Media writing speed is determined by the drives, regardless of what the media manufacturer certifies**

**F.A.Q.s | Government & School Orders | Support | Policy**

Systor Systems, Inc.  
 Copyright © 1997-2010 esystor.com. All rights reserved.  
 Toll Free 1-866-444-1876 / Local 909-444-2590 Fax 909-839-1006  
 email : sales@esystor.com

