

ORIGINAL

COLT / WALLERSTEIN LLP  
Doug Colt (Bar No. 210915)  
dcolt@coltwallerstein.com  
Thomas E. Wallerstein (Bar No. 232086)  
twallerstein@coltwallerstein.com  
Kimberly I. Culp Cloyd (Bar No. 238839)  
kculp@coltwallerstein.com  
Shorebreeze II  
255 Shoreline Drive, Suite 540  
Redwood Shores, California 94065  
Telephone: (650) 453-1980  
Facsimile: (650) 453-1980

NIRO, HALLER & NIRO  
Matthew G. McAndrews (*Pro Hac Vice*)  
mmcandrews@nshn.com  
Oliver D. Yang (*Pro Hac Vice*)  
oyang@nshn.com  
Ashley LaValley (*Pro Hac Vice*)  
alavalley@nshn.com  
181 W. Madison St., Suite 4600  
Chicago, Illinois 60602  
Telephone: (312) 236-0733  
Facsimile: (312) 236-3137

Attorneys for PaymentOne Corporation

UNITED STATES DISTRICT COURT  
NORTHERN DISTRICT OF CALIFORNIA

PAYMENTONE CORPORATION, a  
Delaware Corporation,

Plaintiff,

v.

HOME DEPOT U.S.A., INC., a Delaware  
Corporation,

Defendant.

CASE NO. **CV 13-0993**

**COMPLAINT FOR PATENT  
INFRINGEMENT**

**JURY TRIAL DEMANDED**

*Paid  
\$1*

*(74)*



FILED

MAR - 5 2013

Richard W. Wleking  
Clerk, U.S. District Court  
Northern District of California  
San Jose

*[Handwritten signature]*

JSC

*cl*

FAXED

1 Plaintiff PAYMENTONE CORPORATION ("PaymentOne") alleges as follows:

2 **PARTIES**

3 1. Plaintiff PaymentOne is a Delaware corporation with its principal place of business  
4 at 5883 Rue Ferrari, San Jose, CA 95138. PaymentOne is qualified and duly authorized to conduct  
5 business in the State of California.

6 2. On information and belief, Defendant Home Depot U.S.A., Inc. ("Defendant" or  
7 "Home Depot") is a Delaware corporation doing business in this judicial district with a principal  
8 place of business at 2455 Paces Ferry Road, Atlanta, GA 30339. Upon information and belief,  
9 Home Depot has at least thirty store locations within 50 miles of San Jose, California.

10 **JURISDICTION AND VENUE**

11 3. This is a civil action arising under the patent laws of the United States, 35 U.S.C. §§  
12 1 *et seq.* Consequently, this Court has original subject matter jurisdiction over this suit pursuant to  
13 28 U.S.C. § 1331 and 1338(a).

14 4. Home Depot is subject to the specific and general personal jurisdiction of this Court  
15 because, among other things, it has established continuous and systematic contacts with California  
16 and with this judicial district, it has committed acts within California and this judicial district giving  
17 rise to this action, and it has minimum contacts with the forum such that the exercise of jurisdiction  
18 over it would not offend traditional notions of fair play and substantial justice. For instance,  
19 Defendant has induced others' acts of patent infringement within this district, as further described  
20 below.

21 5. Venue is proper in this judicial district pursuant to 28 U.S.C. §§ 1391(b) and (c) and  
22 1400(b).

23 **THE PATENTS IN SUIT**

24 6. On December 7, 2010, United States Patent No. 7,848,500 ("the '500 Patent"),  
25 entitled "Method and Apparatus to Validate a Subscriber Line," was duly and legally issued by the  
26 United States Patent and Trademark Office. A true and correct copy of the '500 Patent is attached  
27 as Exhibit A.  
28

1           7.       PaymentOne is the sole owner and is listed with the U.S. Patent and Trademark  
2 Office as the assignee of record of the '500 Patent. Payment One owns all right, title and interest in,  
3 has the sole and exclusive right to enforce, and has standing to sue and recover damages for  
4 infringement of the '500 patent, including all claims for damages by reason of past, present or  
5 future infringement.

6           8.       On December 7, 2010, United States Patent No. 7,848,504 ("the '504 Patent"),  
7 entitled "Method and Apparatus to Validate a Subscriber Line," was duly and legally issued by the  
8 United States Patent and Trademark Office. A true and correct copy of the '504 Patent is attached  
9 as Exhibit B.

10          9.       PaymentOne is the sole owner and is listed with the U.S. Patent and Trademark  
11 Office as the assignee of record of the '504 Patent. Payment One owns all right, title and interest in,  
12 has the sole and exclusive right to enforce, and has standing to sue and recover damages for  
13 infringement of the '504 patent, including all claims for damages by reason of past, present or  
14 future infringement.

15          10.       On February 19, 2013, United States Patent No. 8,379,815 ("the '815 Patent"),  
16 entitled "Method and Apparatus to Validate a Subscriber Line," was duly and legally issued by the  
17 United States Patent and Trademark Office. A true and correct copy of the '815 Patent is attached  
18 as Exhibit C.

19          11.       PaymentOne is the sole owner and is listed with the U.S. Patent and Trademark  
20 Office as the assignee of record of the '815 Patent. Payment One owns all right, title and interest in,  
21 has the sole and exclusive right to enforce, and has standing to sue and recover damages for  
22 infringement of the '815 patent, including all claims for damages by reason of past, present or  
23 future infringement.

24          12.       The '500, '504, and '815 patents are generally directed towards systems, methods,  
25 and apparatuses for processing payment transactions and for validating a user's subscriber line.

26        ///

27        ///

28        ///



**FIRST CLAIM FOR RELIEF**

(Infringement of U.S. Patent No. 7,848,500)

13. PaymentOne realleges and incorporates by reference the allegations stated in paragraphs 1 through 12 of this Complaint.

14. Home Depot has indirectly infringed and continues to indirectly infringe at least claims 1, 2, 3, 8, 10, 17, 18, 19, 24, and 26 of the '500 patent under 35 U.S.C. § 271(b) by knowingly and actively inducing others to infringe by intentionally aiding, assisting and encouraging the infringement of its customers through the PayPal In-Store Checkout System.

15. Home Depot had knowledge of the '500 Patent by at least November 20, 2012 when PaymentOne wrote to Home Depot and provided actual notice of infringement of the '500 Patent.

16. The direct infringers that are being induced by Home Depot include, without limitation, Home Depot customers that use the PayPal In-Store Checkout System.

17. Home Depot has knowingly and actively induced infringement of the '500 Patent, for example, by providing to customers the PayPal In-Store Checkout System as an option of payment, promoting the PayPal system to customers through in-store and Internet advertising, and aiding, assisting, and encouraging customers to complete a transaction using the PayPal In-Store Checkout System.

18. As a direct and proximate result of Home Depot's infringement of the '500 Patent, PaymentOne has been and continues to be damaged.

**SECOND CLAIM FOR RELIEF**

(Infringement of U.S. Patent No. 7,848,504)

19. PaymentOne realleges and incorporates by reference the allegations stated in paragraphs 1 through 18 of this Complaint.

20. Home Depot has indirectly infringed and continues to indirectly infringe at least claims 1, 10, 14, 16, 20, 23, 28, 41, 43, 47, 50, 52, 53, 56, 61, 74, 101, 103, and 105 of the '504 patent under 35 U.S.C. § 271(b) by knowingly and actively inducing others to infringe by intentionally aiding, assisting and encouraging the infringement of its customers through the PayPal In-Store Checkout System.

21. Home Depot had knowledge of the '504 Patent by at least November 20, 2012 when PaymentOne wrote to Home Depot and provided actual notice of infringement of the '504 Patent.

22. The direct infringers of those claims that are being induced by Home Depot include, without limitation, Home Depot customers that use the PayPal In-Store Checkout System.

23. Home Depot has knowingly and actively induced infringement of the '504 Patent, for example, by providing to customers the PayPal In-Store Checkout System as an option of payment, promoting the PayPal In-Store Checkout System to customers through in-store and Internet advertising, and aiding, assisting, and encouraging customers to complete a transaction using the PayPal In-Store Checkout System.

24. As a direct and proximate result of Home Depot's infringement of the '504 Patent, PaymentOne has been and continues to be damaged.

### **THIRD CLAIM FOR RELIEF**

(Infringement of U.S. Patent No. 8,379,815)

25. PaymentOne realleges and incorporates by reference the allegations stated in paragraphs 1 through 24 of this Complaint.

26. Home Depot has indirectly infringed and continues to indirectly infringe at least claims 1, 2, 3, 4, 5, 6, 8, 10, 17, 22 and 24 of the '815 patent under 35 U.S.C. § 271(b) by knowingly and actively inducing others to infringe by intentionally aiding, assisting and encouraging the infringement of its customers through the PayPal In-Store Checkout System.

27. Home Depot had notice of the '815 Patent and its infringement thereof upon PaymentOne's filing of this Complaint.

28. The direct infringers of those claims that are being induced by Home Depot include, without limitation, Home Depot customers that use the PayPal In-Store Checkout System.

29. Home Depot has knowingly and actively induced infringement of the '815 Patent, for example, by providing to customers the PayPal In-Store Checkout System as an option of payment, promoting the PayPal In-Store Checkout System to customers through in-store and internet advertising, and aiding, assisting, and encouraging customers to complete a transaction using the PayPal In-Store Checkout System.

30. As a direct and proximate result of Home Depot's infringement of the '815 Patent, PaymentOne has been and continues to be damaged.

**PRAYER FOR RELIEF**

WHEREFORE, PaymentOne prays for the following relief:

A. A judgment finding Home Depot has indirectly infringed each of the '500, '504, and '815 Patents;

B. A permanent injunction enjoining Home Depot, its agents, officers, assigns and others acting in concert with it, from infringing the '500, '504, and '815 Patents;

C. An award of damages adequate to compensate PaymentOne for the infringement of the '500, '504, and '815 Patents;

D. An award of pre-judgment interest and post-judgment interest on the damages awarded;

E. A determination that this is an exceptional case and an award of attorneys' fees pursuant to 35 U.S.C. § 285 and any other applicable statute or law, and an award to PaymentOne of its costs; and

F. Such other relief as the Court deems equitable under the circumstances.

Date: March 5, 2013

Respectfully submitted,

COLT / WALLERSTEIN LLP

By: 

Doug Colt  
Thomas E. Wallerstein  
Kimberly I. Culp Cloyd  
Attorneys for PaymentOne Corporation

NIRO, HALLER & NIRO

By: /s/ Matthew G. McAndrews

Matthew G. McAndrews  
Oliver D. Yang  
Ashley LaValley  
Attorneys for Plaintiff and Counter-Defendant  
PaymentOne Corporation

DEMAND FOR JURY TRIAL

Plaintiff demands a trial by jury on all issues triable to a jury.

Date: March 5, 2013

Respectfully submitted,

COLT / WALLERSTEIN LLP

By:



Doug Colt  
Thomas E. Wallerstein  
Kimberly I. Culp Cloyd  
Attorneys for PaymentOne Corporation

NIRO, HALLER & NIRO

By: /s/ Matthew G. McAndrews

Matthew G. McAndrews  
Kara Szpondowski  
Oliver D. Yang  
Ashley LaValley  
Attorneys for PaymentOne Corporation

# EXHIBIT A





US007848500B2

(12) **United States Patent**  
**Lynam et al.**

(10) **Patent No.:** **US 7,848,500 B2**  
(45) **Date of Patent:** **Dec. 7, 2010**

(54) **METHOD AND APPARATUS TO VALIDATE A SUBSCRIBER LINE**

(75) Inventors: **Joe M. Lynam**, Cupertino, CA (US);  
**Ken R. Dawson**, Pleasanton, CA (US);  
**M. Brendan Philbin**, San Jose, CA (US);  
**Jennifer R. Truitt**, Campbell, CA (US)

(73) Assignee: **PaymentOne Corporation**, San Jose, CA (US)

(\*) Notice: Subject to any disclaimer, the term of this patent is extended or adjusted under 35 U.S.C. 154(b) by 680 days.

(21) Appl. No.: **11/836,603**

(22) Filed: **Aug. 9, 2007**

(65) **Prior Publication Data**

US 2007/0269027 A1 Nov. 22, 2007

**Related U.S. Application Data**

(63) Continuation of application No. 10/225,098, filed on Aug. 20, 2002, now Pat. No. 7,054,430.

(60) Provisional application No. 60/314,604, filed on Aug. 23, 2001.

(51) **Int. Cl.**  
**H04M 15/00** (2006.01)

(52) **U.S. Cl.** ..... **379/127.01; 379/127.02; 379/127.04; 379/127.05**

(58) **Field of Classification Search** ..... **379/220.01, 379/114.27, 127.02, 127.01, 127.04, 127.05, 379/127.06, 207.15; 705/44**  
See application file for complete search history.

(56) **References Cited**

**U.S. PATENT DOCUMENTS**

5,802,156 A 9/1998 Felger

5,933,480 A 8/1999 Felger  
6,122,624 A \* 9/2000 Tetro et al. .... 705/44  
6,574,317 B1 \* 6/2003 de Freitas ..... 379/127.02  
6,836,765 B1 12/2004 Sussman  
6,993,507 B2 1/2006 Meyer et al.  
2002/0083008 A1 6/2002 Smith et al.  
2003/0002639 A1 \* 1/2003 Huie ..... 379/114.27

**OTHER PUBLICATIONS**

"U.S. Appl. No. 10/225,098 Advisory Action mailed Nov. 3, 2005", 3 pgs.

"U.S. Appl. No. 10/225,098 Preliminary Amendment filed Mar. 1, 2004", 10 pgs.

"U.S. Appl. No. 10/225,098, Final Office Action mailed Jun. 7, 2005", 7 pgs.

(Continued)

*Primary Examiner*—Thjuan K Addy

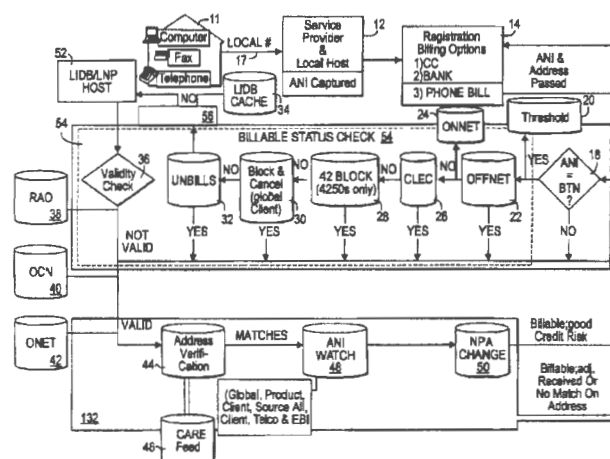
(74) *Attorney, Agent, or Firm*—Schwegman, Lundberg & Woessner, P.A.

(57) **ABSTRACT**

A method is described to verify the identity of a user. The method, in one example embodiment, comprises obtaining automatic number identification (ANI) data or billing telephone number (BTN) data associated with a subscriber line of a telecommunications network; obtaining identification data associated with a subscriber, said identification data being different from the ANI data or the BTN data;

searching a first database using the ANI data or the BTN data to determine first reference subscriber data; searching a second database using the identification data to determine second reference subscriber data; comparing the first reference subscriber data to the second reference subscriber data; and verifying an identity of the subscriber based on the comparing.

**33 Claims, 7 Drawing Sheets**



**US 7,848,500 B2**

Page 2

---

OTHER PUBLICATIONS

"U.S. Appl. No. 10/225,098, Non-Final Office Action mailed Jul. 8, 2004", 5 pgs.

"U.S. Appl. No. 10/225,098, Notice of Allowance mailed Dec. 22, 2005", 2 pgs.

"U.S. Appl. No. 10/255,098, Response filed Nov. 8, 2004 Non-Final Office Action mailed Jun. 8, 2004", 11 pgs.

"U.S. Appl. No. 11/400,737 Preliminary Amendment filed Jan. 8, 2007", 21 pgs.

U.S. Appl. No. 60/307,525, filed Jul. 24, 2001.

"U.S. Appl. No. 11/400,737, Non-Final Office Action mailed Mar. 22, 2010", 17 pgs.

"U.S. Appl. No. 11/400,737, Response filed Jul. 21, 2010 to Non Final Office Action mailed Mar. 22, 2010", 31 pgs.

\* cited by examiner

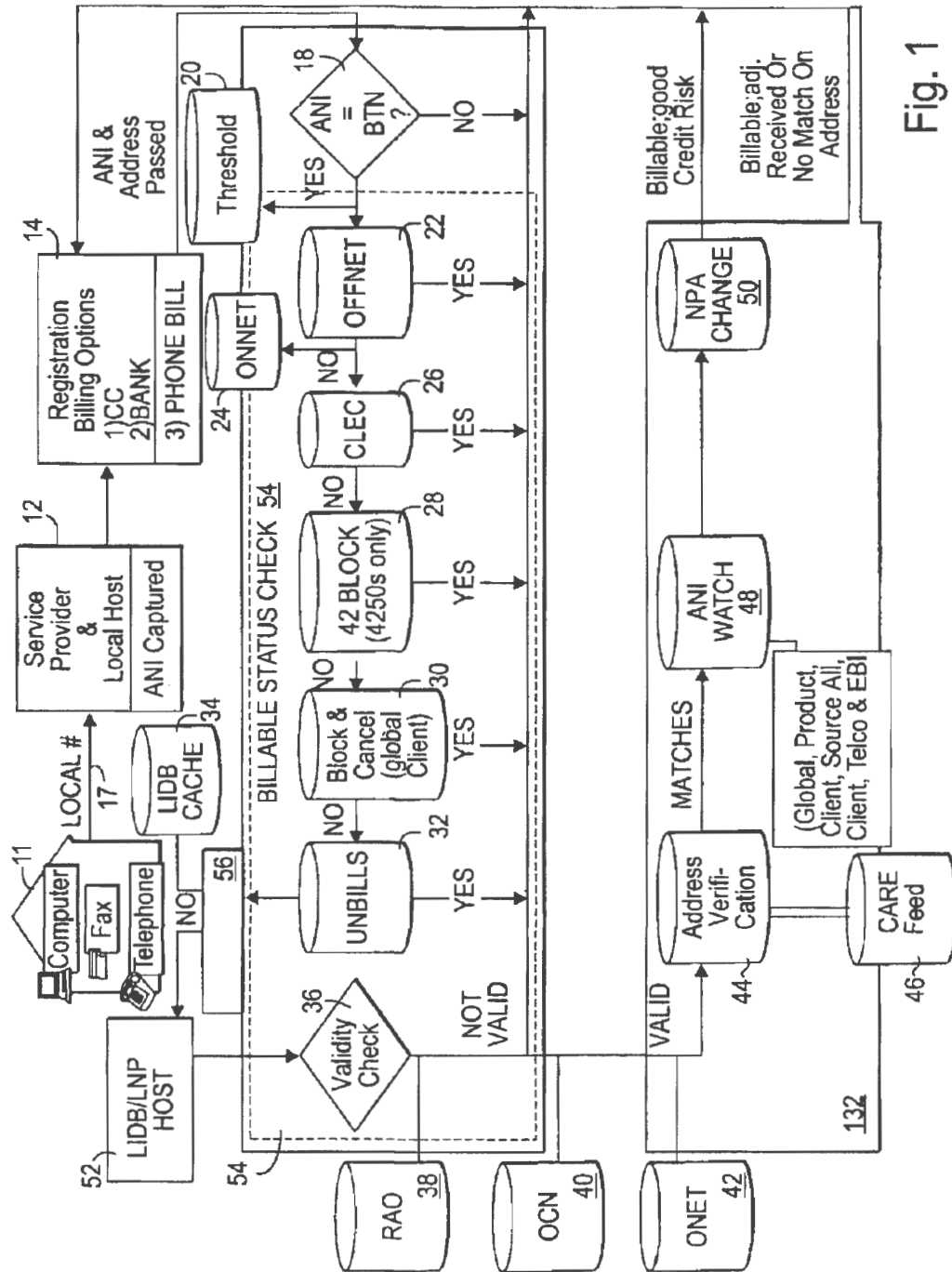


Fig. 1

U.S. Patent

Dec. 7, 2010

Sheet 2 of 7

US 7,848,500 B2

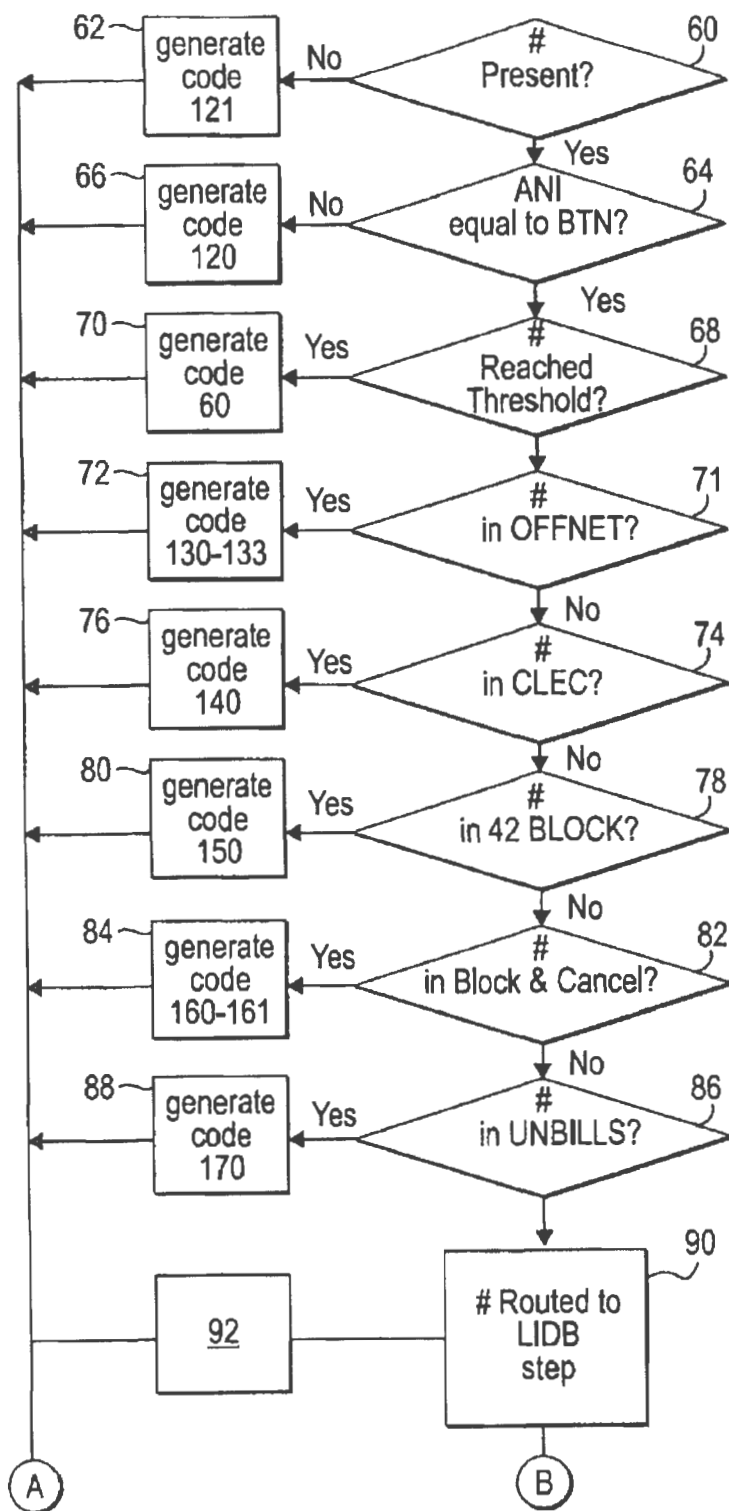


Fig. 2



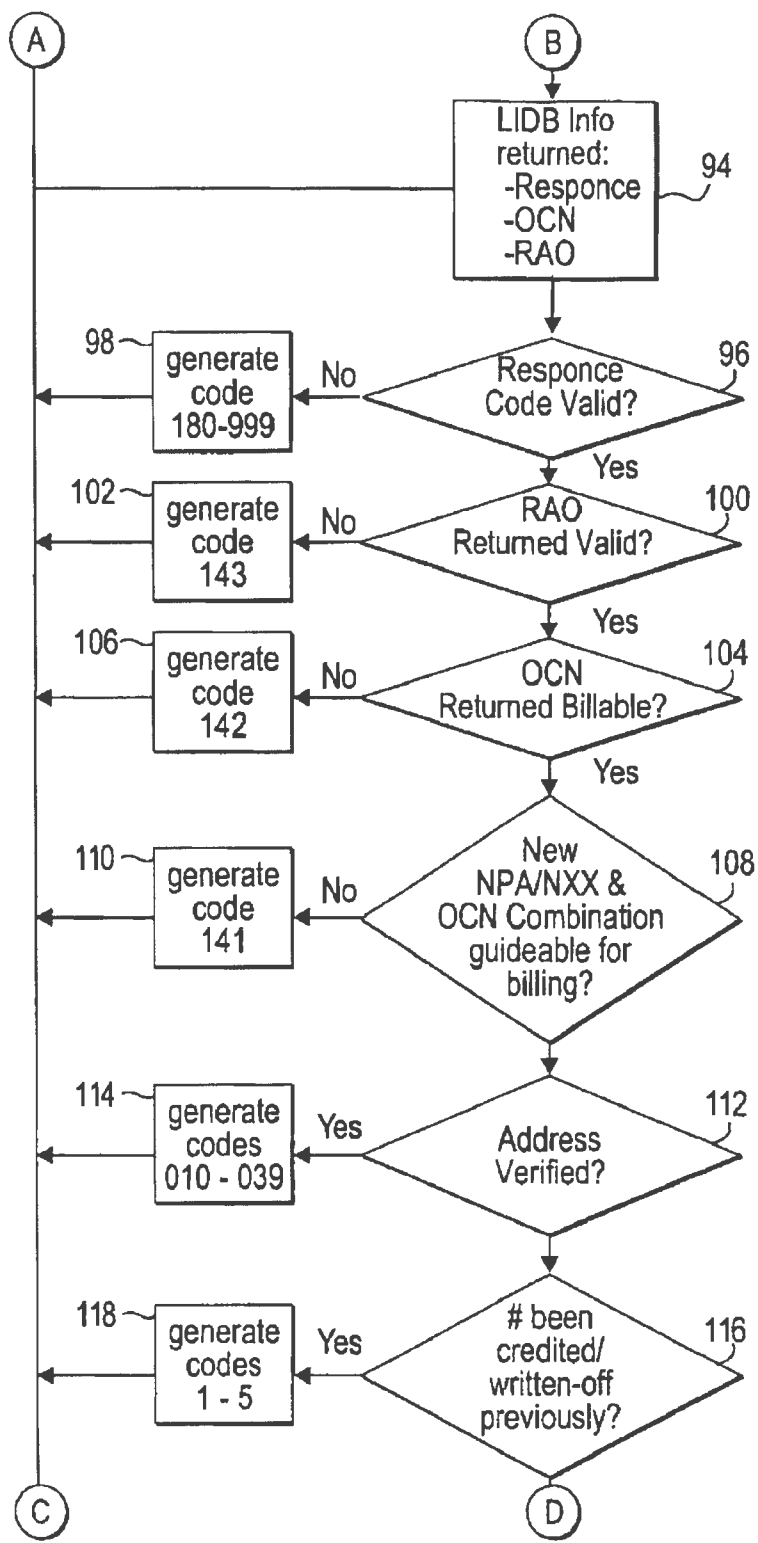


Fig. 3

U.S. Patent

Dec. 7, 2010

Sheet 4 of 7

US 7,848,500 B2

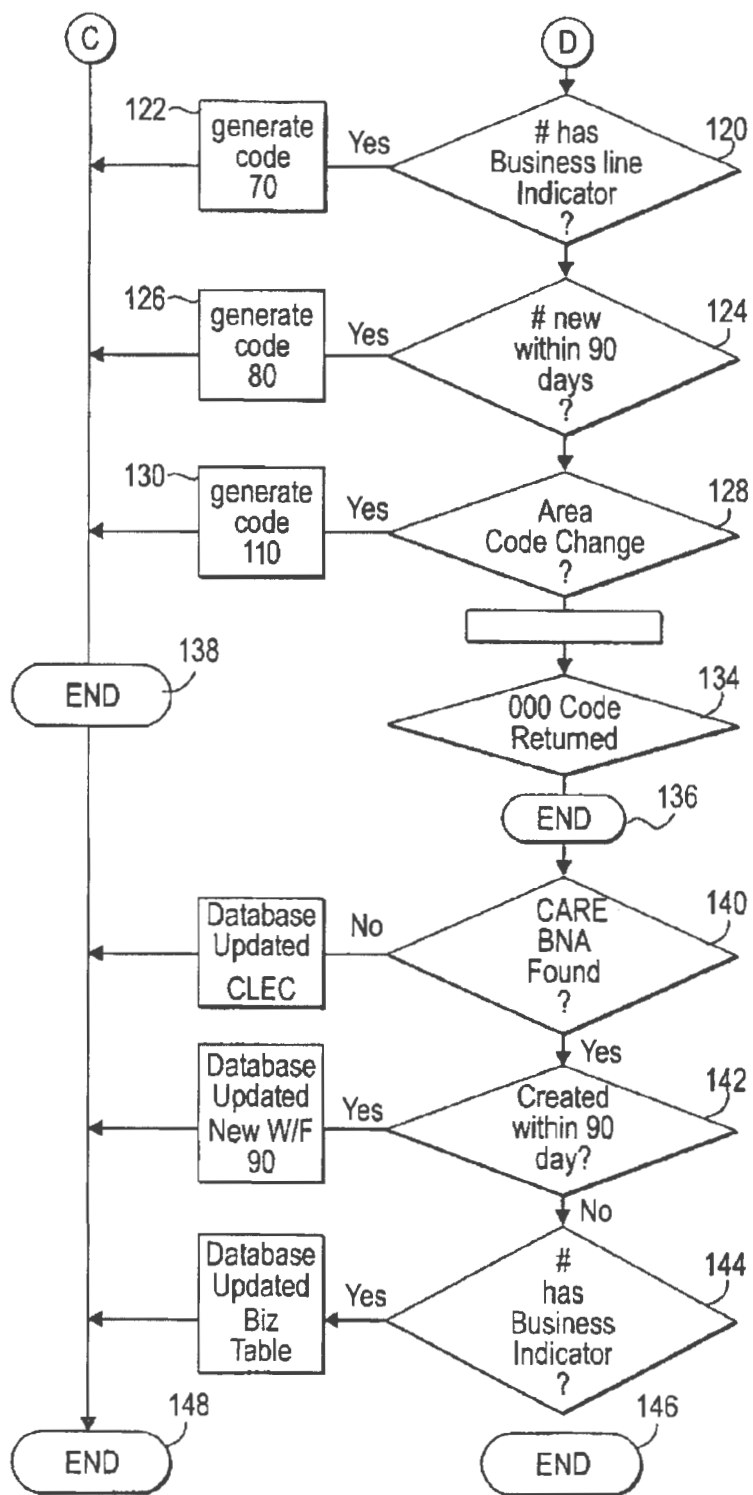


Fig. 4

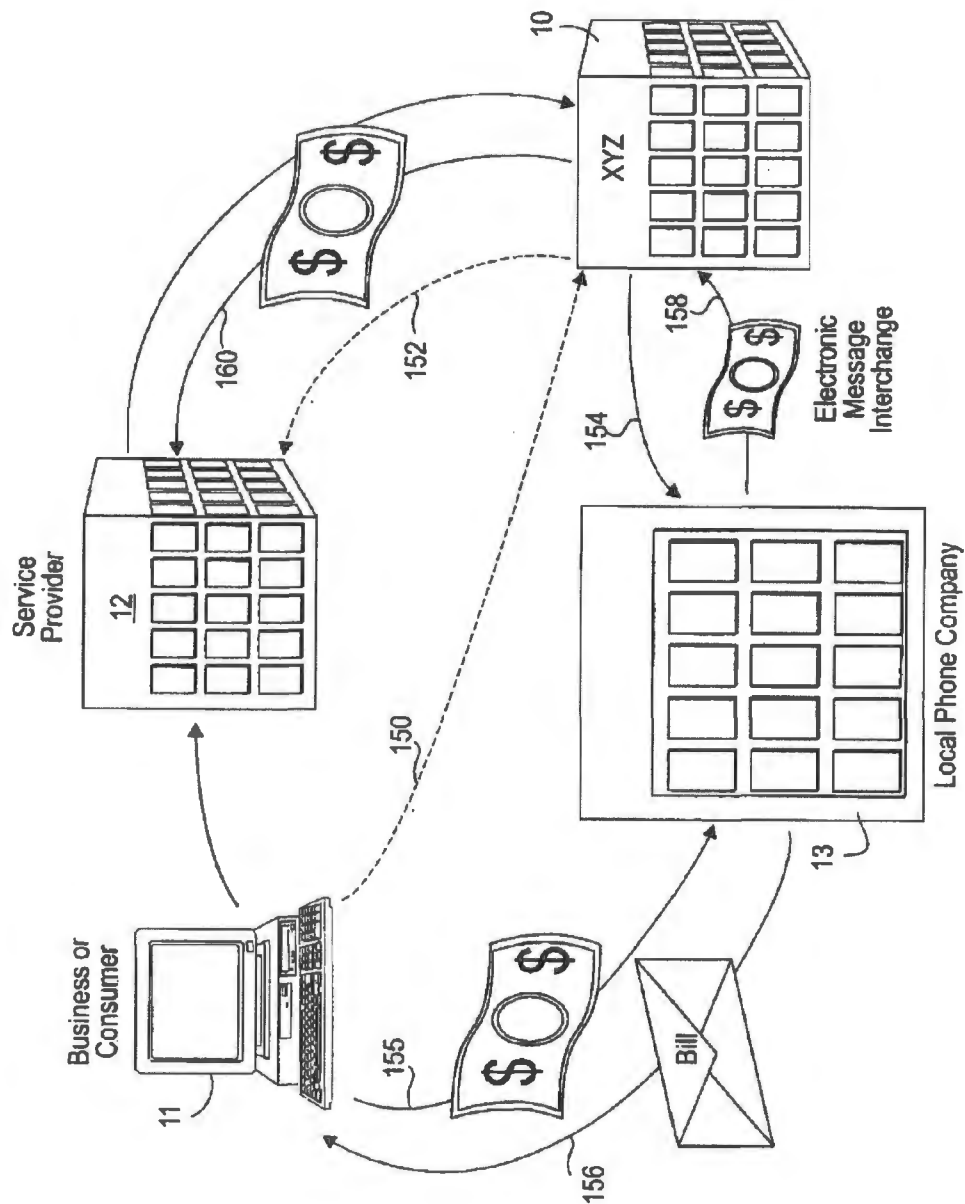


Fig. 5

U.S. Patent

Dec. 7, 2010

Sheet 6 of 7

US 7,848,500 B2

Account Number                      Statement Date                      Page 1  
    Dec 4, 2002  
 Questions about your bill?              1-800-000-0000

XYZ

Total Current Charges (See detail below)	\$106.11
--	----------

Billed on Behalf of BlueLight.com

Description	Amount:
1. Dec 3 BLUELIGHT ISP ACCESS	\$9.91
2. Dec 3 ONLINE SERVICE	\$4.91
3. Dec 3 DSL LINE CHARGE	\$29.91
4. Dec 3 UNIFIED MESSAGING	\$5.95
5. Dec 3 WEB HOSTING	\$20.00

Total Monthly Chargers	\$70.80
------------------------	---------

Billed on Behalf of INTERNET TELEPHONY PROVIDER

Date	Time	Place and Number Called	Type	Rate	Minutes	Amount
6. Nov.8	3:37 pm	Anywhere, USA 444 555-7777	Direct Day	6	.42	
7. Nov.10	3:37 pm	Anywhere, USA 444 555-7777	Direct Day	10	.70	
8. Nov.14	3:37 pm	Anywhere, USA 444 555-7777	Direct Day	7	1.61	
9. Nov.16	3:37 pm	Anywhere, USA 444 555-7777	Direct Day	23	.49	
10. Nov.21	3:37 pm	Anywhere, USA 444 555-7777	Direct Day	50	3.92	

TotalCalls	\$7.14
------------	--------

Billed on Behalf of INTERNET SERVICE PROVIDER

11. Nov.14	2:32 pm	Online Games 444 555-7774	Direct Day	1	\$6.00
12. Nov.16	2:37 pm	Software 444 555-7771	Direct Day	1	\$14.95
13. Nov.21	5:17 pm	MPS Smooth Jazz 444 555-7772	Direct Eve	1	\$8.99

TotalCalls	\$24.94
------------	---------

Taxes &amp; Surcharges

Description

14. Charges for Network Access for Interstate Calling.  
 Imposed by Federal Communications Commission

Amount

\$3.50

Fig. 6



U.S. Patent

Dec. 7, 2010

Sheet 7 of 7

US 7,848,500 B2

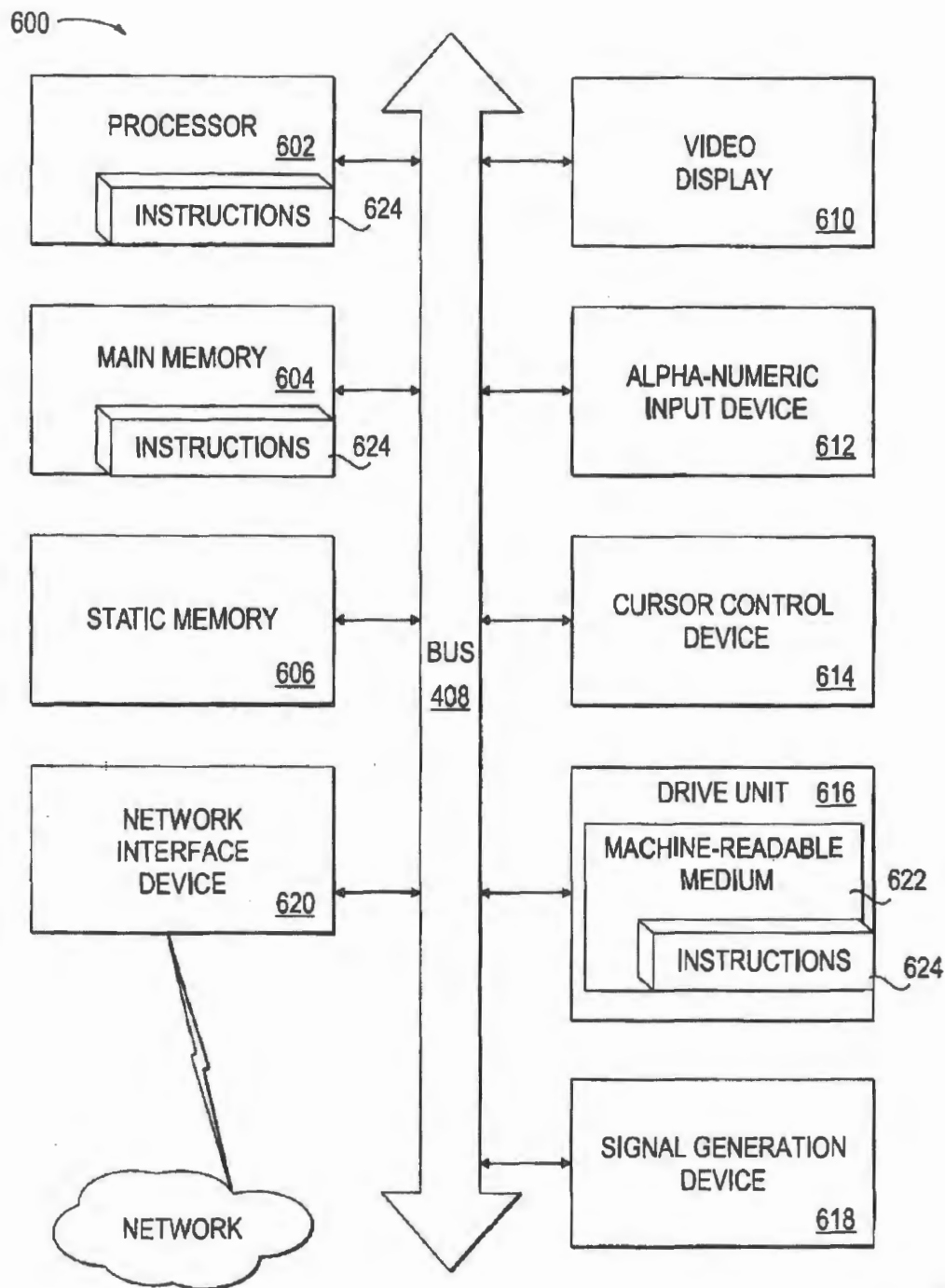


Fig. 7

US 7,848,500 B2

1

## METHOD AND APPARATUS TO VALIDATE A SUBSCRIBER LINE

The present application is a continuation of 10/225,098, now U.S. Pat. No. 7,054,430 entitled "METHOD AND APPARATUS TO VALIDATE A SUBSCRIBER LINE" filed Aug. 20, 2002 which claims the benefit of the filing date of U.S. provisional patent application No. 60/314,604 entitled "METHOD OF VALIDATING A SUBSCRIBER LINE" filed Aug. 23, 2001. U.S. Pat. No. 7,054,430 and U.S. provisional patent application No. 60/314,604 are incorporated herein by reference in their entirety.

### BACKGROUND TO THE INVENTION

An increasing number of vendors are offering goods and/or services which may be purchased via a communication network such as a telecommunication network. For example, the customer may conduct a transaction via a subscriber line using a landline telephone or a personal computer. Conventionally, credit or debit card details are furnished by the customer to the vendor to effect payment for the goods and/or services. As many customers are hesitant to supply credit or debit card details over a communication network, an alternate method of payment would be advantageous. However, if an alternate method is used, verification of the payment method should preferably take place prior to concluding the transaction.

### BRIEF DESCRIPTION OF THE DRAWINGS

The invention is now described, by way of example, with reference to the accompanying diagrammatic drawings.

FIG. 1 shows a schematic block diagram of a subscriber line validation system, in accordance with the invention, for validating a subscriber line of a communication network;

FIGS. 2 to 4 show a schematic flow chart of a method, in accordance with the invention, for validating the subscriber line;

FIG. 5 shows a schematic block diagram of how the system may be used in a conventional commercial environment; and

FIG. 6 shows a schematic representation of a sample telephone bill platform which the system can automatically update.

FIG. 7 shows a diagrammatic representation of machine in the exemplary form of a computer system within which a set of instructions, for causing the machine to perform any one of the methodologies discussed herein, may be executed.

### DETAILED DESCRIPTION

Referring to the drawings, reference number 10 generally indicates an exemplary subscriber line validation system, in accordance with an aspect of the invention, for validating a subscriber line 17 of a subscriber. In one exemplary embodiment, the subscriber line 17 is a telephone line or the like which a consumer or business 11 (see FIGS. 1 and 5) obtains from a telephone company (Telco) 13 or a local exchange carrier (LEC). As described in more detail below, the system 10 uses line data in the exemplary form of an automatic number identification (ANI) service to obtain the telephone line number of the subscriber line 17 thereby to validate the subscriber line 17 when the subscriber line 17 initiates a communication or connection. In one exemplary embodiment, the line number obtained from the ANI service is used to investigate various databases to obtain, for example, an indication of the credit worthiness of the subscriber account

2

associated with the subscriber line 17. It is to be appreciated that any electronic apparatus, e.g. a personal computer, PDA, cellular telephone, or the like may be used to initiate the communication.

Referring in particular to FIG. 1 of the drawings, the system 10 includes an application program interface (API) 14 which is connected to a vendor 12 or service provider (see also FIG. 5) of goods and/or services which requires validation of a subscriber account. The vendor 12, which could for example be an Internet Service Provider, may request the validation of the subscriber line 17 prior to concluding an electronic transaction with a subscriber (e.g., a consumer or business 11) via the subscriber line 17. It is, however, to be appreciated that the API 14 may be connected to a variety of different hosts or clients which require validation of a subscriber line via which the vendor may carry out transactions for goods and/or services.

In one exemplary embodiment, the system 10 is connected to a plurality of vendors which conduct transactions with users via line termination equipment such as a telephone, a personal computer or the like. Such vendors, when conducting transactions, may preferably charge a user for their services by adding such charges to a telephone account of the user rather than charging the goods and/or services to a credit card, debit card, or the like. Accordingly, the validation of the subscriber line 17, and the subscriber account associated with the subscriber line 17, may be of benefit to the vendor 12 prior to completing a transaction. The validation may include determining whether or not the subscriber line 17, via which the communication is made to the vendor, is a billable line and, accordingly, the subscriber account associated with the subscriber line 17 may thus be billed for the transaction.

In one exemplary embodiment, the vendor 12 communicates a request to the system 10 and forwards the subscriber line number, determined by the ANI service, to the system 10 via its API 14. The system 10 then processes the information received from the vendor 12 and provides a validation status, e.g. a code indicating a valid billable number or a code indicating that the subscriber line number is not a valid billable number (e.g. unbillable or non-billable). In particular, a plurality of codes associated with various statuses of the subscriber line 17 may be communicated to the vendor 12 as described in more detail below.

The system 10 includes hardware and software to implement the invention. In the exemplary embodiment, the system 10 includes a comparator module 18, a threshold database 20, an OFFNET database 22, an ONNET database 24, a competitive local exchange carrier (CLEC) database 26, a 42 BLOCK database 28, a block and cancel database 30, an unbilled and/or unpaid bills database 32, line identification database (LIDB) short term cache 34, a validity check module 36, a regional account office (RAO) database 38, an operating company number (OCN) database 40, an ONNET database 42, an address verification database 44, a customer account record exchange (CARE) results database 46, an ANI watch database 48, and an NPA (Numbering Plan Area) exchange database 50. It is to be appreciated that, in less sophisticated embodiments of the invention, all of the above databases need not be included. However, for enhanced accuracy, all of the above databases are preferably included. Further databases may also be included to further enhance the reliability of the validation process.

In addition to any one or more of the above databases, the system 10 is in communication via a conventional communication channel with an off-site or, in some embodiments, on-site line identification database (LIDB) host 52. The LIDB host 52 may include a line number portability (LNP) data-



US 7,848,500 B2

3

base. In one exemplary embodiment, the LNP database may front end access to a plurality of industry standard LIDBs (e.g. 13 different LIDBs). The LNP database may however be a separate database. As described in more detail below, the system 10 communicates the subscriber line number to the LIDB host 52 which, in turn, communicates reference subscriber data in the form of industry standard LIDB codes back to the system 10 for processing. The system 10 then processes the LIDB codes to provide the vendor with validation data relating to the subscriber line 17. Unlike conventional LIDB applications which use LIDB to make decisions regarding destination subscriber lines or call completion decisions, e.g. decisions for calling cards, collect and third party toll services or the like, the system 10 may be used to identify telephone numbers being served by CLECs in order to ensure that calls are routed correctly on ported lines.

Broadly, the system 10 has a variety of different components, including a communication module defined by the API 14, and a processor module 54. The a processor module 54 includes the various databases 20 to 32 as well as the comparator module 18 and the validity check module 36, and an interrogation module 56 for interrogating the LIDB host 52. It is to be appreciated that the aforementioned modules may be defined by one or more servers with associated databases. Further, in the drawings, the LIDB host 52 is shown as a single database but may comprise many different LIDB databases maintained by various LECs and, accordingly, may be located at various different geographic locations.

Referring in particular to FIGS. 2 to 4 of the drawings, a flow chart describing the method of operation of the system 10 is shown. In one exemplary embodiment, a vendor 12 initiates a request to the system 10 to validate a subscriber line 17 via which the vendor 12 wishes to transact with a customer (consumer or business 11). As shown at operation 60, the system 10 first checks to see if the subscriber line number is present in the request from the vendor 12 and, if no line number is present, a return code 121 is generated and communicated to the vendor as shown at operation 62. The code 121 indicates to the vendor that the system 10 is unable to process the request. If, however, the subscriber line number is present in the request from the vendor 12, the system 10 then checks if the subscriber line number captured (hereinafter also referred to as the ANI) and a billing telephone number (BTN) match, as shown at operation 64 (see also the comparator module 18 in FIG. 1). In one exemplary embodiment, the BTN may be sourced from the consumer or customer 11 when a transaction is requested by the customer 11. If, however, the ANI and the BTN do not match, then the processor module 54 generates a code 120 (see operation 66) to indicate that the caller and the owner of the line number are not the same person (e.g. subscriber inputs a BTN and calls from a different ANI) and the relevant modified code is then returned to the vendor 12. If the ANI and the BTN do match, the processor module 54 interrogates the threshold database 20 (see operation 68) to ascertain whether or not the line number has reached its threshold (e.g., a predefined client threshold parameter such as an account threshold indicating a maximum dollar amount that may be charged to the account). If the line number has reached its threshold, the processor module 54 then generates a code 60, as shown at operation 70, which is then communicated to the vendor 12 to indicate that the line number should not be granted service. In other words, the subscriber account cannot be billed for the goods or services requested by the customer 11 from the vendor 12.

If the threshold for the particular subscriber line 17 has not been reached, the system 10 may then interrogate its OFFNET database (see operation 71) to check if the industry

4

standard NPA/NXX and operating company number (OCN) of the subscriber line 17 is present in the OFFNET database 22. The OFFNET database 22 includes NPA INXX and OCN combinations of operating companies with which the proprietor or user of the system 10 does not have billing and collection agreements to bill into the telephone company's or Telco's bill page associated with the subscriber line 17. Accordingly, the proprietor or user of the system 10 is unable to include a charge in the account associated with the subscriber line 17 on behalf of the vendor 12 for the transaction carried out with the vendor 12 via the subscriber line 17.

If the line number is in the OFFNET database 22, then the processor module 54 generates codes 130 to 133 (see operation 72) and communicates these codes to the vendor 12. The codes 130 to 133 indicate that the NPA/NXX and OCN for the particular line number 17 are not billable and, accordingly, charges for goods and/or services requested by a customer 11 via the subscriber line 17 cannot be included in a monthly account or the like by the system 10. As shown in Table 2 below, the codes 130 to 133 provide an indication to the vendor 12 why the subscriber line 17 is not billable or deliverable. If the subscriber line number is not included in the OFFNET database 22, a check is conducted to see whether or not the subscriber line number is included in the ONNET database 24. This check is however optional in the embodiment depicted in the drawings, but in certain embodiments, may be mandatory if the system 10 does not include the OFFNET database 22.

Thereafter, as shown in operation 78, the processor module 54 checks to see if the line number 17 is found in a known CLEC table in the CLEC database 26. CLEC numbers are those line numbers that are known to have ported to a CLEC and, accordingly, the proprietor of the system 10 is thus unable to route these line numbers to the correct billing entities. If the line number is found in the CLEC database 26, then the processor module 54 generates a code 140 (see operation 76), which is communicated to the vendor 12. The code 140 indicates that the line number is not billable for the CLEC and the system 10 can thus not charge the transaction to the subscriber account associated with the subscriber line 17.

If the line number is not found in the CLEC database 26, then the system 10 may check to see if the subscriber of the line number has requested a 4250 billing block as shown at operation 78. In particular, the processor module 54 interrogates the 42 BLOCK database 28 and, if the number is located in the database 28, which indicates that monthly recurring charges (4250 charges) are prevented from being billed to that line number, the processor module 54 generates a code 150 (see operation 80) which is communicated to the vendor 12 to indicate that billing to the particular subscriber line 17 has been blocked.

If, however, the subscriber line 17 has not been blocked, the system 10 may then check at operation 82 if the line number is located in the block and cancel database 30 and, if so, the processor module 54 generates codes 160 and 161 which are then communicated to the vendor 12 as shown at operation 84. The block and cancel database 30 includes requests from owners of subscriber lines, agencies, businesses, or the like that a service be canceled or blocked from further billing. Thereafter, the system 10 may interrogate the unbilled and/or unpaid bills database 32, as shown at operation 86, to check if there is a history of any unpaid bills and/or unbillable bills associated with the subscriber line 17. Unbillable bills relate to those subscriber line numbers where previous attempts have been made to bill charges to the subscriber account associated with the subscriber line number 17, and which have been returned as unbillable. If the processor module 54



US 7,848,500 B2

5

locates the subscriber line number in the unbillable and/or unpaid bills database 32 then, as shown at operation 88, a code 170 is generated and communicated to the vendor 12 to indicate that the subscriber line number was previously found to be unbillable and is still considered to be unbillable.

The processing described in the abovementioned operations may conduct a preliminary investigation into the subscriber line number or ANI to provide an initial indication of whether or not the ANI corresponds with a billable subscriber line. Once the initial investigation has been conducted in certain embodiments, the system 10 then uses the ANI to obtain reference subscriber line data in the form of LIDB codes from one or more industry standard databases, e.g. the LIDB host or database 52. Examples of the LIDB codes used in the system 10 are shown in Table 3 below.

As shown at operation 90, if the ANI is not found in the LIDB database 52, then the system 10 cannot provide any validation data to the vendor 12 on this subscriber line and an appropriate code is then communicated to the vendor as shown at block 92.

Once the LIDB database or host 52 has been interrogated, it returns industry standard LIDB codes and line number portability (LNP) data to the system 10 as shown in operation 94. The LIDB codes may then be mapped or translated by the processor module 54 into modified validation codes (see Table 3) which provide relevant validation information to the vendor 12. As can be seen from Table 3, the same modified validation code can be generated from a plurality of different LIDB codes. Once the LIDB information codes have been returned to the processor module 54, the LIDB codes, including an OCN and RAO response codes, are fed into the validity check module 36 as shown at operation 96.

As mentioned above, the LIDB host 52 may also provide LNP data to the system 10. The LNP data is used to identify subscriber line numbers that have ported to a CLEC. If a subscriber line has been ported to a CLEC, the billing ONNET status of the CLEC may be verified in the CLEC database 26. The LNP identifies the facilities based CLECs which are CLECs that have been assigned all the line numbers for an NPA/NXX in a specific geographic territory. This type of CLEC may be in control of the cable, dial tone and billing envelope for that number. In one exemplary embodiment, the LNP cannot be used to identify CLEC sellers, which have resold the subscriber line under their brand, but still lease the cable and tone from an incumbent local exchange carrier (ILEC). Accordingly, a third-party billing facility, e.g. a proprietor or user of the system 10, may be unable to process transaction data onto a bill page of the CLEC reseller bill page. In order to identify reseller CLECs, the system 10 may compare RAO and OCN information, returned from the LIDB host 52, to data in the ONNET database 24. The OCN is the local Telco that owns the subscriber line number and the RAO is the office of the Telco that is responsible from a billing standpoint for the subscriber line number.

If the validity check module 36 determines that the response codes are invalid, the system 10 generates modified codes 180 to 999 (see operation 98 and Table 2) which are communicated to the requestor or vendor to indicate that the mapping of the LIDB codes to the modified codes concluded that the line is an unbillable subscriber line.

If the validity check module 36 confirms the validity of the LIDB codes and, in the event of the line number being a billable line number, the processor module 54 then may check the RAO database 38 to ascertain whether or not the RAO is billable, as shown at operation 100. If the RAO is not billable, then the processor module 54 generates and communicates a

6

return code 143 (see operation 102) to indicate to the vendor 12 that the line number belongs to a CLEC which is not billable by the system 10.

In a similar fashion, at operation 104 the processor module 54 checks to see if the OCN returned from the LIDB host 52 corresponds with a known CLEC or if the OCN corresponds with an OFFNET OCN and is therefore also unbillable by the system 10. If the line number corresponds to an OCN that is not billable, a return code 142 is generated by the processor module 54 and communicated to the vendor (see operation 106).

If the subscriber line number has passed the RAO and OCN checks and, accordingly, it appears that the number is billable, the processor module 54 may then check to see if a new NPA/NXX and OCN combination for this line number is guidable to the correct local Telco for billing (see operation 108). If the line number is not guidable, then the system 10 generates a code 141 at operation 110 which is communicated to the vendor to indicate that, even though the line number is billable, the proprietor of the system 10 is unable to guide the billing information to the new Telco for billing. Accordingly, the telephone number is in fact non-billable insofar as the system 10 is concerned and a decline status is therefore communicated to the vendor 12.

The abovementioned operations are carried out to ascertain whether or not the subscriber line can be billed for the goods and/or services requested. However, to enhance the accuracy or reliability of the system 10, further checks or verification may be conducted as described below.

In the event that the subscriber line number has passed or complied with the abovementioned checks, and has thus not yet been rejected, the system 10 may perform address verification procedures at operation 112. In particular, when the ANI is communicated to the API 14, location data is also provided which has been fed in by the user, e.g. via a computer terminal, orally over a telephone, or the like. The system 10 then interrogates an address verification database 44 to compare the address or location data (e.g. a ZIP code) supplied by the customer 11 with a reference address data as shown at operation 112. If, however, the address supplied by the customer 11 does not match with the address in the verification database 44 or, the addresses are not within a predefined range or area, the processor module 54, as shown at operation 114, generates codes 10 to 39 which are then communicated to the vendor 12 to indicate the level of likelihood that the caller (ANI) and the account owner are the same person.

During the address verification operation 112, the system 10 may interrogate a customer account record exchange (CARE) database 46 (which can be an on-site database which is regularly updated), to provide enhanced reliability. In particular, in one exemplary embodiment, the CARE database 46 or information site is one or more industry standard off-site databases which allow consumers to select or change their long distance service provider. Local Telcos forward specific customer information to the LEC associated with the subscriber. In one exemplary embodiment, the information communicated includes a new telephone number, a billing address, an installation date, a person or organization responsible for the account, or the like.

As shown at operation 116, the system 10 may interrogate the CARE database or information site and CARE data is then loaded into CLEC and new line databases to perform certain fraud and/or billing checks. The CARE information investigation may occur after a successful validation event. In one embodiment, once the system 10 has validated the subscriber line 17, the subscriber line number data is sent to a CARE database provider hosting the CARE database 46 to obtain the BNA (Billing Name and Address) and age of the account. In one exemplary embodiment, the information is returned



US 7,848,500 B2

7

within 48 hours and then processed. CARE records that are returned without BNA and NO ACCOUNT codes may be inserted into the CLEC database 26 for future reference. Accordingly, if the BTN is presented again at a later date, it will fail the CLEC check operation 74 (see FIG. 2).

The ANI watch database 48, which may include historical and adjusted information, may be used by the system 10 to determine if the account has previously been adjusted (see operation 116). In one exemplary embodiment, this operation includes ascertaining previous requests by the subscriber for credit, obtaining data on any written off amounts for charges that were billed to a bill page, or the like.

If adjustments have previously been made to the account associated with the subscriber line 17, the processor module 54 generates codes 1 to 5 (see operation 118) to indicate to the vendor 12 that the adjustments have previously been made. If no adjustments have been made, the processor module 54 checks to see whether or not the subscriber line number has a business line indicator as shown at operation 120. If the business line indicator is active, the system 10 generates a code 70 (see operation 122), which is communicated to the vendor 12 to advise that the line is a business line. Thereafter, as shown in operation 124, the processor module 54 may check to see if the subscriber line number has been in service for less than about 90 days and, if so, a return code 80 (see operation 126) is generated to advise the vendor 12 who may then selectively decide whether or not to conclude the transaction. A database of new numbers may be updated with the new number.

Thereafter, the system 10 may interrogate the ANI watch database 48 (see operation 128) to ascertain whether or not the area code of the line number has been changed or is scheduled to change. In one embodiment, this interrogation is for billing purposes only and is not used to decide upon the validity of the request. In this operation, the vendor 12 requesting the validation updates the billing file with the new area code number, and the processor module 54 generates a code 110 (see operation 130) to advise the vendor 12 of the scheduled change to the area code.

Once the line number has passed all the aforementioned checks, the system 10 may conclude that the subscriber line 17 is in fact a billable subscriber line based on the data obtained using ANI techniques and, accordingly, the transaction may be charged directly to the account of the subscriber. Accordingly, the system 10 then generates a code 000 (see operation 134) which is communicated to the vendor 12. The code 000 may define an approved status following both a billable line number inquiry as well as several fraud checks which are carried out by the fraud control module 132 (see

8

FIG. 1). If the subscriber line number of the subscriber line 17 has passed the abovementioned checks and a return code 000 is generated, the procedure shown in FIG. 4 is carried out whereafter the process terminates at operation 136. Thus, operation 136 may define the end of the process during which the various checks have been conducted on the subscriber line 17 to assess whether or not it is a billable subscriber line that charges may be billed to. Operation 138 defines, in one embodiment, the last operation to which the process jumps when, at any point during the abovementioned process, the line number is found not to be billable (or a creditworthiness decision is requested) and the inquiry is accordingly terminated and the relevant code is communicated to the vendor 12.

In one exemplary embodiment, the abovementioned operations are executed in real-time. However, information sources that do not allow checks on the line number in real time may be carried out subsequently on the subscriber line number. In one embodiment, once the real-time evaluation is carried out and the return code 000 is communicated to the vendor 12, and should the vendor 12 decide to proceed with the transaction, transaction data is then returned to the system 10 by the vendor 12 for a pre-billing validation check or actual billing. During the actual billing, the system 10 may access an account folder of the subscriber line at the Telco and insert the charges due to the vendor 12 for its goods or services. As shown at operation 140, subscriber line numbers may be sent to the CARE database 46 to determine if the BNA is available at the local Telco. If the folder is not available, the local Telco sends the BNA and codes as to why the number is unavailable. If the BNA is found in the CARE database 46, the processor module 54 may then check to see whether or not the account was created within the last 90 days as shown at operation 142. If the account was not created within the last 90 days, then the business indicator is checked as shown at operation 144 and the process ends as previously shown at operation 146. If, however, the number was found in the CARE database 46, the account was created within the last 90 days, or has an active business indicator, then the system 10 may generate the appropriate codes, which are communicated to vendor 12, and the process terminates as shown at operation 148.

The above process has been described in terms of modified codes set out in Table 2 but, it is to be appreciated, that any other defined set of corresponding codes may be provided so long as the codes are mapped onto, or generated in response to, any one or more of the industry standard LIDB codes.

A summary of the codes generated by one exemplary embodiment of the system 10 during execution of the validation process is provided in Table 1 below.

TABLE 1

Modified codes generated during the BTN Validation Process.	
Code Generated and ref to flow charts	Description of code
Return Code 121	Indicates inability to proceed with validation; returned to requestor
See operation 64	Checks if ANI captured and BTN provided match (not required in all scenarios)
Return Code 120	Indicates caller and # (line number) owner are not the same person; returned to requestor
See operation 68	A defined Threshold limits the number of attempts on that # within a certain timeframe
Return Code 60	Indicates # may not be granted service; returned to requestor.
See operation 71	Checks the NPA/NXX and OCN to those in the OFFNET. OFFNET = NPA/NXX and OCN combinations where proprietor of the system 10 does not have a Billing and Collections agreement to bill into the Telco's' bill page.

US 7,848,500 B2

9

10

TABLE 1-continued

Return Code 130-133	Indicates that NPA/NXX & OCN for that Number are not billable; returned to requestor.
See operation 74	Checks the line number to see if found in known CLEC table. These are numbers that are known to have ported to a CLEC. Proprietor is unable to route these # to the correct billing entities.
Return code 140	Indicates # not billable for CLEC; returned to requestor.
See operation 78	Checks line # to see if owner has requested a 4250 Billing block. This block prevents monthly recurring (4250) charges from being billed to that line #.
Return Code 150	Indicates that billing to a particular subscriber line has been blocked; returned to requestor.
See operation 82	Checks line number for inclusion in the Block and Cancel database. This database includes requests from line # owners, agencies, businesses etc that have requested that service be cancelled and or blocked from further billing.
Return Code 160-161	Indicates number found in Block and Cancel and is not billable; returned to requestor.
See operation 86	Checks line # for unbillable history. Unbillables are #s where tried to bill charges previously and have been returned as unbillable.
Return Code 170	Indicates # has unbilled before and is still considered unbillable; returned to requestor.
See operation 90	If # not found in Unbillable, then routed to LIDB for info.
ITEM	Description
See operation 94	Identifies info returned from LIDB re. that line #; Response Code = status about that # as a call termination point. OCN = Operating Company # = the local Telco that owns that #. RAO = Regional Accounting Office = the office of the Telco that is responsible from a \$ flow standpoint for that #.
See operation 96	Checks the validity of the LIDB code returned for the number as a Billable #. This is where the mapping of the LIDB codes to the proprietor validation codes happens.
Return Code 180-999	Indicates the mappings of the LIDB codes to the proprietor Val reply codes. Each of these indicate a non-billable #; returned to requestor.
See operation 100	Checks if RAO returned is an RAO that is not billable.
Return Code 143	Indicates that the # belongs to a CLEC and is unbillable; returned to requestor.
See operation 104	Checks if OCN returned from LIDB is a known CLEC or OFFNET OCN and therefore unbillable.
Return code 142	Indicates that the new OCN is not billable; returned to requestor.
See operation 108	Checks to see if new NPA/NXX & OCN combination for # is guidable to the correct local Telco for billing.
Return code 141	Indicates that even though the # is billable, the system is unable to guide to the new Telco for billing; unguidable = unbillable; # returned to requestor.
The operations to indicate if # is billable have been completed. The next operations provide additional information about the # for the requestor e.g. to decide if and how much credit to extend for services. They also provide additional billing information.	
See operation 112	Provides address verification (if required). Matches # to address to determine likelihood of person dialing to the person that owns the account at local Telco.
Return Code 10-39	Indicates the level likelihood that the caller (ANI) and acct owner are the same. Returned to requestor.
See operation 116	Checks to see if # has had adjustment activity previously. This includes request for credit, written off for charges that billed to a bill page. Requestor makes credit decision based on #s history of credits, adjustments, write offs.
Return Code 1-5	Indicates the type and source of adjustment to charges to that #. Returned to requestor.
See operation 120	Checks to see if the # has a business line indicator. Requestor decides if would like to extend service or not.
Return Code 70	Indicates that the # is identified as a business.
See operation 124	Checks to see if the # has been in service less than 90 days. Requestor makes a decision about how much service to offer # without much payment history.
Return Code 80	Indicates that the # has been in service less than 90 days.
See operation 128	Checks if the Area Code of the # has been scheduled to change. This is for billing information purposes only. Requestor updates billing filed with new number.
Return Code 110	Indicates Area Code has been scheduled to change. New number is appended to end of record.
See operation 134	If the number passes all the previous checks, then 000 code is returned to requestor. The Validation is complete for this request.

US 7,848,500 B2

11

12

TABLE 1-continued

See operation 138	End of validation for numbers that did not pass or were found in other checks.
END OF REAL TIME VALIDATION EVENT	
Information sources that do not allow checks on the # in Real-time (r-t), happen on # that was returned as 000 after the r-t validation event has completed. The #s are loaded into the appropriate databases. This information will be provided once the # is returned for billing.	
Operations 140, 142, 144	Indicates path for those #s returned with a 000 code.
See operation 140	#s are sent to CARE source to determine if BNA (billing Name and Address) available at local Telco. Telco sends BNA and codes as to why unavailable.
CLEC	#s that are returned with codes that indicate the # has moved to a CLEC from the local Telco are loaded into the CLEC table.
See operation 142	#s are sent to the CARE source to determine if the account has been created within the last 90 days. The response codes indicate this condition.
New within 90	#s that are returned with codes that indicate this condition are loaded into the NEW table.
See operation 144	#s are sent to a Business source. This source identifies which numbers belong to businesses.
Biz table	Numbers that are indicated as being line #s that belong to businesses are loaded in this table.

Table 2 (see below) provides the various actions, which are executed in response to a modified validity code. The table provides an exemplary description and explanation of each code. Return codes 001 to 179 relate to failure codes, which are generated by the system 10 prior to investigation of the LIDB host 52. Return codes 180 to 451 are generated during the LIDB code checks. In the event of the subscriber line 17

failing the checks carried out on it, the system 10 provides optional use of a credit card and, accordingly, Table 2 sets out codes which the system 10 generates in response to executing a standard credit card enquiry for a particular transaction. If the system 10, which may be defined by a server and associated databases, is down, codes 994 to 999 are generated and communicated to the vendor.

TABLE 2

Validation & BNA Reply Codes		
Code	Action	DESCRIPTION EXPLANATION
BILLABLE CODES		
000	Approved	Billable; was not found during fraud control checks Passed all billing and fraud control checks
FRAUD CONTROL CODES (performed after billable check)		
ANI WATCH (adjustments to bill)		
001	Verify	Billable; found in ANI WATCH - CLIENT source all Passed all billable checks; but ANI had been adjusted previously at vendor's, Client's or Telco's request for your Client #
002	Verify	Billable; ANI WATCH - CLIENT source Passed all billable checks; but ANI had been adjusted previously at Client's request for your Client #
003	Verify	Billable; ANI WATCH - CLIENT source Passed all billable checks; but ANI had been adjusted previously at vendor's or Telco's request for your Client #
004	Verify	Billable; found in ANI WATCH - GLOBAL Passed all billable checks; ANI had been adjusted previously at vendor's, Client's or Telco's request for all Client ids
005	Verify	Billable; found in ANI WATCH - PRODUCT Passed all billable checks; ANI had been adjusted previously at vendor's, Client's or Telco's request for same product type
ZIP VERIFICATION		
010	Verify	Billable; Unable to match ZIP invalid Passed all billable checks; unable to find this Zip code for this NPA/NXXX-
011	Verify	Billable; ZIP does not match Passed all billable checks; Zip code does not match this NPA/NXXX



US 7,848,500 B2

13

14

TABLE 2-continued

012	Verify	Billable; ZIP matches to same Metropolitan area	Passed all billable checks; Zip code matches to same Metropolitan area as NPA NXX.
ADDRESS VERIFICATION			
Note: The result of an AVS check does not mean that the transaction is declined. This information may be advice only. The system may compare the AVS data with billing information for the buyer and pass the results of the comparison to the merchant.			
020	Verify	Billable; BNA match not found	Passed all billable checks; no BNA match found for ANI
021	Verify	Billable; Unable to verify BNA invalid	Passed all billable checks; unable to verify BNA to ANI info sent
022	Verify	Billable; with zip-Match, plus4-Match, locale-Match	Passed all billable checks; BNA Zip code +4 & locale (street address) matches info sent for ANI, Name does not match
023	Verify	Billable; with zip-Match, plus4-Match, NoMatch-locale	Passed all billable checks; BNA Zip code +4 matches info sent for ANI but locale (street address) does not match
024	Verify	Billable; zip-Match, NoMatch-plus4, locale-Match	Passed all billable checks; BNA Zip code & locale (street address) matches info sent for ANI but +4 does not match
025	Verify	Billable; zip-Match, NoMatch-plus4, NoMatch-locale	Passed all billable checks; BNA Zip code matches info sent for ANI but locale (street address) & +4 does not match
026	Verify	Billable; NoMatch-zip, plus4-Match, locale-Match	Passed all billable checks; BNA +4 and locale (street address) matches info sent for ANI but Zip does not match
027	Verify	Billable; NoMatch-zip, plus4-Match, NoMatch-locale	Passed all billable checks; BNA +4 matches info sent for ANI but locale (street address) and Zip does not match
028	Verify	Billable; NoMatch-zip, NoMatch-plus4, locale-Match	Passed all billable checks; BNA locale (street address) matches info sent for ANI but ZIP and +4 does not match
029	Verify	Billable; NoMatch-zip, NoMatch-plus4, NoMatch-locale	Passed all billable checks; BNA does not match zip, +4 or locale (street address) sent for ANI
030	Good	Address & Zip Match	
031	Verify	Address Match, Zip No Match	
032	Verify	Address Match, Zip Service Unavailable	
033	Verify	Address No Match, Zip Match	
034	Verify	Address No Match, Zip No Match	
035	Verify	Address No Match, Zip Service Unavailable	
036	Verify	Address Service Unavailable, Zip Match	
037	Verify	Address Service Unavailable, Zip No Match	
038	Verify	Address Service Unavailable, Zip Service Unavailable	
AREA CODE CHANGE INDICATOR			
110	Update	Indicates there has been an area code change for this NPA/NXX	Code is sent in addition to the validation response codes. New phone number is appended to record. Provided to update the account with the correct BTN.
MISCELLANEOUS			
120	Verify	BTN and ANI do not match	For use where BTN and ANI are passed and do not match.
121	Verify	BTN or ANI are missing from record	For use where BTN and ANI is missing from record
UNBILLABLE CODES			
OFFNET			
130	Unbillable	NPA/NXX found in OFFNET - GLOBAL	Area code/exchange (NPA/NXX) combination resides in OFFNET DB. OFFNET is a territory where the LEC (Local Exchange Carrier) is unable to provide 3rd party presentation in to its envelope.
131	Unbillable	NPA/NXX found in OFFNET - CLIENT SPECIFIC	Area code/exchange (NPA/NXX) combination resides in OFFNET DB specific for this Client id.



US 7,848,500 B2

15

16

TABLE 2-continued

132	Unbillable	NPA/NXX found in OFFNET - PRODUCT	Area code/exchange (NPA/NXX) combination resides in OFFNET DB specific for this product type.
133	Unbillable	NPA/NXX NOT VALID	Area code/exchange is not a valid area code exchange
CLEC (CLECs are unable to provide 3rd party bill presentation in their envelopes.)			
140	Unbillable	Line number (NPA/NXX-XXXX) in CLEC Territory	BTN has been ported to a CLEC (competitive local exchange carrier).
141	Unbillable	NPA/NXX not ON NET	BTN has been ported to a CLEC (competitive local exchange carrier) and is not billable.
142	Unbillable	Line number OCN in CLEC OCN table	Operating Company number for this BTN was found on CLEC OCN table. The number is not billable.
143	Unbillable	Line number RAO in CLEC RAO table	Regional Accounting Office number for this BTN was found on CLEC RAO table. This BTN is not billable.
42 BLOCK (4250s Only)			
150	Unbillable	Line Number has a block for 4250 records	Consumer has requested a block for all MRCs (monthly recurring charges) from being billed to this phone number.
BLOCK & CANCEL			
160	Unbillable	GLOBAL - Line number has been blocked to stop all charges.	Consumer requested block to stop all charges from being billed to this number.
161	Unbillable	CLIENT - Line number has a block to stop all charges from this Client id.	Consumer requested a block to stop charges from being billed or to cancel service for this phone number from this Client id.
UNBILLS			
170	Unbillable	Line number is Unbillable.	Line number has been returned from the Local Telephone companies within the last 6 months as unable to be billed.
LIDB FAILURE			
180	Unbillable	Line number failed LIDB check - GENERAL	Line Number has been returned from LIDB as unbillable.
181	Unbillable	Vacant NPA NXX	No working line #s in NPA NXX
182	Unbillable	No Incoming Calls	Line # cannot accept incoming calls
183	Unbillable	Denied ANI	Auto decline of all attempts from this ANI
184	Unbillable	Calling Card block	Auto decline of Calling Card number
185	Unbillable	Collect Call Block	Auto decline of Collect calls to this number
186	Unbillable	Third Party Call Block	Auto decline all Third Party billed calls to this number
187	Unbillable	Credit Card Block	Auto decline of charges billed to Credit Card
188	Unbillable	Group Number Block	Auto decline of attempts from this group.
189	Unbillable	Audiotext Bock	Number does not allow audiotext calls.
190	Unbillable	Excessive Calling Card PIN hits	Threshold for calling card attempts has been exceeded.
191	Unbillable	Line Number Block	Auto decline of all charges to this number
200	Unbillable	Excessive Use - BTN	BTN has exceeded threshold
201	Unbillable	Excessive Use DN	DN has exceeded threshold
202	Unbillable	Excessive Use - ANI	ANI has exceeded threshold
203	Unbillable	Excessive USE - Calling Card Pin	Calling Card Pin has exceeded threshold
220	Unbillable	Feature Group A	Local telephone switch is Feature Group A
221	Unbillable	PBX line	Line # is a PBX line
222	Unbillable	WATS line	Line # is a WATS line
223	Unbillable	Hotel/Motel Auto Quote w/ tax	Hotel/Motel Auto Quote w/ tax
224	Unbillable	Hotel/Motel Auto quote w/o tax	Hotel/Motel Auto quote w/o tax
225	Unbillable	Dormitory line	Line # belongs to a dorm
226	Unbillable	Hospital line	Line number belongs to a hospital
227	Unbillable	Centrex line	Line number belongs to CENTREX
228	Unbillable	Alternate Service Provider	Line # belongs to an alternate service provider
229	Unbillable	POTS line (collect or third party calls)	Line # is plain old telephone service lines for business or residential
230	Unbillable	Pager #	Line number belongs to pager

US 7,848,500 B2

17

18

TABLE 2-continued

231	Unbillable	PCS/Mobile/Cellular #	Line number belongs to a wireless provider
240	Unbillable	Line was disconnected w/o referral	Line # was disconnected w/o a referral number
241	Unbillable	Line Number changing	Line is not connected yet.
242	Unbillable	not used	
243	Unbillable	DISCO w/o referral	Line number has been removed from service w/o referral
244	Unbillable	Temp DISCO	Line number has been removed from service temporarily
245	Unbillable	DISCO with referral	Line number has been disconnected w/ referral or Operator takes calls
246	Unbillable	Temp DISCO w/ referral	Line number has been removed from service temporarily w/ referral
250	Unbillable	POTS line rating on rate plan	POTS line is on a rate plan for business or residential message rate 1 or 2 or flat rate
300	Unbillable	Public - Incompatible interface	Public phone with incompatible interface
301	Unbillable	LEC Public Standard PreP OT	LEC Public phone standard interface; prepay overtime
302	Unbillable	LEC Public Alternate	LEC Public phone alternate interface; functions controlled by set
303	Unbillable	LEC Public Standard PP OT	LEC Public phone standard interface; postpay overtime
304	Unbillable	IC Public	IC Public Phone - Alternate Interface
305	Unbillable	IC Public Standard	IC Public Phone - Standard Interface
306	Unbillable	LEC Public Special - PP OT	LEC Public Phone- Special billing post paid OT
307	Unbillable	LEC Public Special - PreP OT	LEC Public Phone - Special Billing; Pre pay OT
308	Unbillable	LEC Semi Public	LEC Semi Public Phone
309	Unbillable	LEC Semi Public Phone (no collect or 3rd Party calls)	LEC Semi Public Phone does not allow collect or 3rd party calls to this number
310	Unbillable	LEC Prepaid Card	LEC Prepaid Card
311	Unbillable	IPP (fka COCOT) Standard interface	Telecommunications station Payphone Standard
312	Unbillable	IPP (fka COCOT) Alternate interface	Payphone - Alternate
313	Unbillable	Coinless (non IPP fka COCOT)	Coinless Pay phone
314	Unbillable	Coinless (IPP fka COCOT)	Coinless payphone
315	Unbillable	Prison (non IPP fka COCOT)	Prison payphone
316	Unbillable	Prison (IPP fka COCOT)	Prison Payphone
450	Unbillable	BNS: Voice Quote - without tax	Charge quotes without tax
451	Unbillable	BNS: Voice Quote - with tax	Charge quotes with tax
CREDIT CARD RESPONSE CODES			
000	Approved	Credit card approved	
501	Decline/Error	User authentication Failed	
502	Decline/Error	Invalid tender	Your merchant bank account does not support the following credit card type that was submitted
503	Decline/Error	Invalid transaction type	Transaction type is not appropriate for this transaction. For example, you cannot credit an authorization-only transaction.
504	Decline/Error	Invalid amount	
505	Decline/Error	Invalid merchant information	Processor does not recognize your merchant account information. Contact your bank account acquirer to resolve this problem.
512	Decline/Error	Declined	Please check the credit card number and transaction information to make sure they were entered correctly. If this does not resolve the problem, have the customer call the credit card issuer to resolve.
513	Decline/Error	Referral	Transaction was declined but could be approved with a verbal authorization from the bank that issued the card. Submit a manual Voice Authorization transaction and enter the verbal auth code
519	Decline/Error	Original transaction ID not found	The transaction ID you entered for this transaction is not valid.

US 7,848,500 B2

19

20

TABLE 2-continued

520	Decline/Error	Cannot find the customer reference number	
522	Decline/Error	Invalid ABA number	
523	Decline/Error	Invalid account number	Please check credit card number and re-submit.
530	Decline/Error	Account Lookup information Mismatch	Account provided found in system, however, unique key provided does not match unique key in system.
531	Decline/Error	Account does not exist	Account provided not found in system
542	Decline/Error	Invalid expiration date	Please check and re-submit
525	Decline/Error	Transaction type not mapped to this host	
526	Decline/Error	Invalid vendor account	
527	Decline/Error	Insufficient partner permissions	
528	Decline/Error	Insufficient user permissions	
550	Decline/Error	Insufficient funds available	
551	Decline/Error	Invalid transaction returned from host	
552	Decline/Error	Processor not available	
553	Decline/Error	Credit error	Please make sure you have not already credited this transaction, or that this transaction ID is for a creditable transaction. (For example, you cannot credit an authorization.)
554	Decline/Error	Void error	Please make sure the transaction ID entered has not already been voided. If not, then look at the Transaction Detail screen for this transaction to see if it has settled. (The Batch field will be set to a number greater than zero if the transaction has been settled). If the transaction has already settled, your only recourse is a reversal (credit a payment or submit a payment for a credit).
555	Decline/Error	Capture error	Only authorization transactions can be captured
556	Decline/Error	Failed AVS check	Address and Zip code do not match
557	Decline/Error	Cannot exceed sales cap	For ACH transactions only
558	Decline/Error	CVV2 Mismatch	
800	Unbillable	LNP Only Look-Up, number was found	LNP Only Look-Up, number was found in the LNP GTT database as ported.
801	Unbillable	LNP Only Look-Up, number was not found	LNP Only Look-Up, number was not found in the LNP GTT database, not ported.
802	Unbillable	LNP Only Look-Up, the NPA/NXX is not a portable range.	LNP Only Look-Up, the NPNXX is not a portable range.
SYSTEM DOWN			
994	Resubmit	Message Format Error	Message received in invalid or unrecognized format.
995	Resubmit	Time out	Session timed out.
996	Resubmit	Connection Failure	Unable to connect.
997	Resubmit	Subsystem Failure	Subsystem, such as LIDB, Credit Card, etc, not available.
998	Resubmit	Network Failure	Network Not Available
999	Resubmit	System Down	System Unavailable

As mentioned above, the system 10 may translate the LIDB codes into modified verification codes as shown in Table 2. These modified validity codes are then mapped or translated. Table 3 below provides a list of the modified validity codes

which are generated following the mapping carried out by the processor module 54 to translate LIDB codes to the modified verification codes set out in Table 1.

TABLE 3

LIDB/LNP SOURCE TRANSLATIONS for ISP:					
Resp. Type In	Resp. Code In	ACTION	LIDB ADMIN? Description	rtfc type	Code Out
APP	000	Approved	Calling card has an Unrestricted PIN.	G1	000
APP	001	Approved	Calling card has a Restricted PIN. The	g1	000

US 7,848,500 B2

21

22

TABLE 3-continued

LIDB/LNP SOURCE TRANSLATIONS for ISP:					
Resp. Type In	Resp. Code In	ACTION	LIDB ADMIN?	Description	rtfc type Code Out
				switch must verify that the DNI matches the first 10 digits of the calling card before placing the call.	
APP	004	Approved		Collect call - No verification is required.	G1 000
APP	005	Approved		Third-party call - No verification is required.	G1 000
APP	006	Approved		There is a system error.	S 999
APP	008	Approved		Communications Link Tests "Good."	S 999
APP	010	Approved		Commercial credit card is approved and the zip code matches, if the zip code was sent.	G1 000
APP	011	Approved	Y	Bill-to number has an Admin. Override to automatically approve the transaction. (Admin. Reply)	G1 000
APP	012	Approved		Originating number (ANI) has an Admin. Override to automatically approve the transaction. (Admin. Reply)	G1 000
APP	013	Approved		Dialed number (DNI) has an Admin. Override to automatically approve the transaction. (Admin. Reply)	G1 000
APP	014	Approved		Group number has an Admin. Override to automatically approve the transaction. (Admin. Reply)	G1 000
APP	015	Approved		Commercial credit card is approved but the zip code check is unavailable.	CC 500
APP	016	Approved		Commercial credit card is approved but the zip code check is unavailable. Retry later.	CC 501
APP	017	Approved		Commercial credit card is approved but the zip code check is not supported.	CC 502
APP	018	Approved		Commercial credit card is approved and the address matches but the zip code does not match.	CC 503
APP	019	Approved		Commercial credit card is approved and the address and the zip code match.	CC 504
APP	020	Success		LNP Only Look-Up, number was found in the LNP GTT database as ported.	LNP 800
APP	021	Success		LNP Only Look-Up, number was not found in the LNP GTT database, not ported.	LNP 801
CON	050	Verify		Collect call number has no block.	o1 000
CON	051	Verify		Verify acceptance of the charge.	O1 000
CON	053	Denied		Third-party call number has no block.	S 999
CON	054	Denied	Y	Verify acceptance of the charge. Unable to authorize, Automatic Code Gapping is in effect at the LIDB. Every third query is dropped by the LIDB.	G3 000
CON	055	Denied	Y	Excessive Use - The bill-to number exceeded the high limit threshold in the Admin. fraud control system. (Admin. Reply)	O2 000
CON	060	Conditional	Y	Excessive Bad PIN Attempts - The threshold for bad PIN attempts for the calling card was exceeded in the Admin. fraud control system. (Admin. Reply) This is the same as reply code 309.	G3 000
CON	061	Conditional	Y	Low Limit Warning - The bill-to number exceeded the low limit threshold in the Admin. fraud control system. (Admin. Reply)	G3 000
CON	062	Denied	Y	Low Limit Warning - The dialed number exceeded the low limit threshold in the Admin. fraud control system. (Admin. Reply)	G3 000
CON	063	Conditional	Y	Excessive Use Dialed - The dialed number exceeded the high limit threshold in the Admin. fraud control system. (Admin. Reply)	G2 180
				No Host Still Billable - There is no LIDB check available, but the Customer has a billing agreement with this LEC. (Admin. Reply)	



US 7,848,500 B2

23

24

TABLE 3-continued

LIDB/LNP SOURCE TRANSLATIONS for ISP:						
Resp. Type In	Resp. Code In	ACTION	LIDB ADMIN?	Description	rtf type	Code Out
CON	064	Approved	Y	Commercial credit card is approved but the zip code and the address do not match.	CC	505
CON	065	Conditional	Y	Low Limit Warning - The ANI exceeded the low limit threshold in the Admin. fraud control system. (Admin. Reply)	G3	000
CON	066	Denied	Y	Excessive Use ANI - The ANI exceeded the high threshold in the Admin. fraud control system. (Admin. Reply)	G3	000
CON	070	Approved		Calling card has no service denial in the Card Service Denial Indicator field. Calling card calls may be billed to this card number.	G1	000
CON	071	Approved		Calling card has no service denial in the Pin Service Denial Indicator field. Calling card calls may be billed to this card number.	G1	000
CON	080	Verify		Collect calls - Accept intralata, Reject interlata collect calls. Recommend verify acceptance of the charge.	O1	000
CON	081	Verify		Third-party calls - Accept intralata, reject interlata third-party calls. Recommend verify acceptance of the charge.	O1	000
CON	082	Verify		Collect calls - Accept intralata, verify interlata collect calls. Recommend verify acceptance of the charge.	O1	000
CON	083	Verify		Third-party calls - Verify intralata, reject interlata third-party calls. Recommend Verify acceptance of the charge.	O1	000
CON	084	Verify		Collect call - Verify acceptance of the charge by an Operator.	O1	000
CON	085	Verify		Third-party call - Verify acceptance of the charge by an Operator.	O1	000
CON	086	Verify		Collect call - Accept intralata charge, verify interlata charge with Operator.	O1	000
CON	087	Verify		Third-party calls - Verify intralata charge with operator, reject interlata charge with Operator.	O1	000
CON	088	Verify		Collect Calls: POTS Line (Business/Residential)	G5	000
CON	089	Verify		Third-Party Calls: POTS Line (Business/Residential)	G5	000
CON	090	Verify		BNS: Centrex Line, Collect calls - Some LECs allow billing to this type of line, others do not. Verify Acceptance.	G4	000
CON	091	Verify		BNS: POTS Line - Residential - Message rate 1	G9	000
CON	092	Verify		BNS: POTS Line - Residential - Message rate 2	G9	000
CON	093	Verify		BNS: POTS Line - Business - flat rate	G9	000
CON	094	Verify		BNS: POTS Line - Business - message rate 1	G9	000
CON	095	Verify		BNS: POTS Line - Business - message rate 2	G9	000
CON	096	Verify		BNS: POTS Line - Residential - flat rate	G9	000
DENY	100	Denied		Message Format Error Message	S	994
DENY	100	Denied		Message Format Error- Date format	S	994
DENY	100	Denied		Message Format Error-Header Message Error	S	994
DENY	100	Denied		Message Format Error- Merchant ID Error	S	994
DENY	100	Denied		Message Format Error-No End of Header Indicator	S	994
DENY	100	Denied		Message Format Error-Header Data Indicator, did not contain data in each field of the message That was represented by the message text map field	S	994

US 7,848,500 B2

25

26

TABLE 3-continued

LIDB/LNP SOURCE TRANSLATIONS for ISP:						
Resp. Type In	Resp. Code In	ACTION	LIDB ADMIN?	Description	rfc type	Code Out
DENY	100	Denied		Message Format Error-PIN not numeric	S	994
DENY	100	Denied		Message Format Error-Terminating Error (commercial credit card only	S	994
DENY	100	Denied		Message Format Error-Terminating Number not numeric	S	994
DENY	100	Denied		Message Format Error-Originating Number not Numeric	S	994
DENY	100	Denied		Message Format Error-Charge Number not Numeric	S	994
DENY	100	Denied		Message Format Error-No End Header Indicator	S	994
DENY	101	Denied		Message Format Error Invalid Customer/Terminal ID Number	S	994
DENY	102	Denied		Message Format Error Invalid Message Type	S	994
DENY	103	Denied		Message Format Error Invalid Transaction Type	S	994
DENY	104	Denied		Message Format Error Invalid Sequence Number	S	994
DENY	105	Denied		Message Format Error Invalid Data Indicator	S	994
DENY	105	Denied		Message Format Error- Header Data Indicator	S	994
DENY	107	Denied		Bad PIN format. PINs must be equal to or higher than 2000.	S	994
DENY	200	Denied		Calling card blocked, missing customer record - There is no record of that calling card number in the database.	S	994
DENY	201	Denied		BNS, missing customer record - There is no record of that line number in the database.	S	994
DENY	202	Denied		Missing BNG - There is no record of that NPANXX in the database.	S	994
DENY	203	Denied		Non-billable NXX - DPC table failure. The NPANXX does not have routing or allow billing, e.g. cellular. (LIDB or Admin. Reply)	G2	180
DENY	204	Denied		Calling card blocked, screened data - A screening mechanism is in place at the LIDB that does not allow charges to this calling card.	O2	000
DENY	205	Denied		Protocol converter problem - There is a problem with the SS7 protocol converter.	S	999
DENY	206	Denied		BNS & No Calling Card Calls - No Host, Nonparticipating Group. This NPANXX exists but there is no LIDB host. (LIDB or Admin. Reply)	o2	180
DENY	207	Denied		LIDB Access Denied because no queries should be sent to this LIDB destination. (Admin. Reply)	S	999
DENY	208	Denied		Calling card blocked, Screened Data on PIN (Pin Service Denial Indicator) - A screening mechanism is in place at the LIDB that does not allow charges to this PIN.	O2	000
DENY	209	Denied		External SS7 Problem - There is a format problem in the SS7 network	S	999
DENY	210	Denied		Calling card blocked, screened data - A screening mechanism is in place at the LIDB that does not allow charges to this calling card.	O2	000
DENY	211	Denied		Calling card is blocked because it has a bad PIN or the PIN does not match database information.	O2	000
DENY	211	Denied		Unexpected Data Value, Calling card blocked, Bad PIN - This means a bad PIN was used or there is no PIN on file.	O2	000
DENY	212	Denied		Calling card blocked, PIN Excessive Use at LIDB Owner. - The PIN exceeded the high threshold in the LIDB fraud control system	G3	000

US 7,848,500 B2

27

28

TABLE 3-continued

LIDB/LNP SOURCE TRANSLATIONS for ISP:						
Resp. Type In	Resp. Code In	ACTION	LIDB ADMIN?	Description	rtfc type	Code Out
DENY	213	Denied		Vacant BNG - There are no working lines in the NPANXX.	G2	181
DENY	214	Denied		No Collect calls - Collect calls are not allowed to this line number.	O2	000
DENY	215	Denied		No Third-party calls - Third-party calls are not allowed to this line number	O2	000
DENY	216	Denied		BNS: LEC Public - Standard Interface (functions controlled by the network) - Postpay Overtime	G10	303
DENY	217	Denied		BNS: Coinless (non IPP fka COCOT)	G10	313
DENY	218	Denied		BNS: semi-public phone - No Collect or Third-party calls are allowed to this line number.	G10	309
DENY	219	Denied		Spare - This LIDB response is not in use at this time.	AV	180
DENY	220	Denied		Time-out, No response from Host - A response was not received from the host database within 4 seconds for a Telco query or 12 seconds for a Bank card query. (LIDB or Admin. Reply)	S	180
DENY	221	Denied		BNS Data unavailable, Error Message, No Host - No collect or third-party calls should be allowed to this line number.	S	180
DENY	222	Denied		Calling card Data unavailable, Error Message, No Host - No calling card calls should be allowed to this line number.	S	180
DENY	223	Denied		BNS & Calling card, screened response LIDB - A screening mechanism is in place at the LIDB that does not allow charges to this account number.	O2	000
DENY	224	Denied		LIDB Misroute - The query was routed to the wrong LIDB.	S	999
DENY	225	Denied		Reject, Reroute - The LIDB could not read the format of the query.	S	994
DENY	226	Denied		Unexpected Component - The LIDB cannot interpret the format of the query.	S	994
DENY	227	Denied		UDTS, SS7 Network problem - There is an SS7 network problem.	S	999
DENY	228	Denied		BNS: Personal Communication Service (PCS)	G8	231
DENY	229	Denied		BNS: Mobile	G8	231
DENY	230	Denied		Not Billable - The Customer does not have a billing arrangement with the LEC for this NPANXX (OCN On-Net Screening).	G2	180
DENY	231	Denied		BNS: LEC Prepaid Telecommunications Card Station	G10	310
DENY	232	Denied		Feature Group A (FGA)	G4	000
DENY	233	Denied		BNS: LEC Public - Alternate Interface (functions controlled by set)	G10	302
DENY	234	Denied		BNS: LEC Public - Special Billing - Postpay Overtime (functions controlled by the network)	G10	306
DENY	235	Denied		BNS: LEC Public - Special Billing - Prepay Overtime (functions controlled by the network)	G10	307
DENY	236	Denied		BNS: Public - Incompatible Network Interface (interface other than standard or alternate)	G10	300
DENY	237	Denied		BNS: IC Public - Alternate Interface	G10	304
DENY	238	Denied		BNS: IPP (fka COCOT) - Standard Interface		311
DENY	239	Denied		BNS: Pager	G8	230
DENY	241	Denied		General, Reject - The LIDB could not read the format of the query.	S	994
DENY	242	Denied		Invoke, Reject - The LIDB could not read the format of the query.	S	994
DENY	243	Denied		Return Result, Reject - The LIDB could not read the format of the query.	S	994
DENY	244	Denied		Return Error, Reject - The LIDB could not read the format of the query.	S	994

US 7,848,500 B2

29

30

TABLE 3-continued

LIDB/LNP SOURCE TRANSLATIONS for ISP:						
Resp. Type In	Resp. Code In	ACTION	LIDB ADMIN?	Description	rtfc type	Code Out
DENY	245	Denied		Transaction Portion, Reject - The LIDB could not read the format of the query.	S	994
DENY	246	Denied		BNS: Vacant Number - There is no line number assigned.	G2	180
DENY	247	Denied		BNS: Disconnected without referral - The line number was disconnected with no referral to a new line number.	G6	240
DENY	248	Denied		BNS: Changed to non-published number - The line number was changed to a non-published number.	o5	000
DENY	250	Denied		No Collect Calls, Screened Data - A screening mechanism is in place at the LIDB that does not allow charges to this line number.	O2	000
DENY	251	Denied		No Third-party calls, Screened Data - A screening mechanism is in place at the LIDB that does not allow charges to this line number.	O2	000
DENY	252	Denied		BNS: Screened Data - A screening mechanism is in place at the LIDB that does not allow charges to this line number.	G7	191
DENY	253	Denied		BNS: Screened Data - A screening mechanism is in place at the LIDB that does not allow charges to this line number.	G7	191
DENY	254	Denied		BNS & No Calling Card, Unavailable network resource - This line or card number is not in the database.	O2	411
DENY	255	Denied		BNS: Screened Data - A screening mechanism is in place at the LIDB that does not allow charges to this line number.	G7	191
DENY	256	Denied		BNS: Being changed - The line number is being changed; it may not yet be connected.	G6	241
DENY	257	Denied		BNS: May not yet be connected - The line number may be new; it may not yet be connected.	G6	243
DENY	258	Denied		BNS: Temporarily disconnected - The line number is temporarily disconnected.	G6	244
DENY	259	Denied		BNS: Disconnected, calls being taken by operator - The line number is temporarily disconnected, the operator is taking calls.	G6	245
DENY	260	Denied		BNS: Temporarily removed from service - The line number is temporarily removed from service.	G6	244
DENY	261	Denied		BNS: Not in service for incoming calls - This line number cannot accept incoming calls.	G2	182
DENY	262	Denied		BNS: Temporarily disconnected at customer request without referral - The line number is temporarily disconnected at the request of the customer without referral.	G6	245
DENY	263	Denied		BNS: Temporarily disconnected at customer request with referral - The line number is temporarily disconnected at the request of the customer with referral.	G6	246
DENY	264	Denied		BNS: Changed with referral to new number - The line number was changed. A referral to another line number is in place.	o5	000
DENY	265	Denied		Calling card blocked, PIN Nonpayment - The calling card is blocked because of nonpayment.	O2	000
DENY	266	Denied		Calling card blocked, Service Restriction on PIN - There is a service restriction on this PIN.	O2	000
DENY	267	Denied		Calling card blocked, no PINs assigned. There is no PIN assigned to this calling card/line number.	O2	000



US 7,848,500 B2

31

32

TABLE 3-continued

LIDB/LNP SOURCE TRANSLATIONS for ISP:						
Resp. Type In	Resp. Code In	ACTION	LIDB ADMIN?	Description	rfc type	Code Out
DENY	268	Denied		Calling card blocked, service denial - There is a service restriction on this calling card.	O2	000
DENY	269	Denied		Calling Card - The calling card is a CILD (proprietary card) for which there is no host.	O2	000
DENY	270	Denied		BNS: Unexpected Data Value - No Collect or Third-Party Calls are allowed.	S	994
DENY	272	Denied		LIDB/CCC Response Time-out - A response was not received from the host database within 4 seconds for a Telco query and 12 seconds for a Bank query.	S	180
DENY	273	Denied		No Collect Calls at Customer Request - The end user customer requested the block for collect calls to this line number.	O2	000
DENY	274	Denied		BNS & No Calling Card Calls: Screened data.	O2	000
DENY	275	Denied		BNS: Hotel/Motel Auto Quote - with tax	G4	000
DENY	276	Denied		BNS: Dormitory Line	G4	225
DENY	277	Denied		BNS: Hotel/Motel Auto Quote - without tax	G4	000
DENY	278	Denied		BNS: PBX Line	G4	221
DENY	279	Denied		BNS: Prison (IPP fka COCOT)	G10	316
DENY	280	Denied		BNS: WATS Line	G4	222
DENY	281	Denied		No Third-party calls at Customer Request - The end user customer requested the block for third-party calls to this line number.	O2	000
DENY	282	Denied		BNS: LEC Public - Standard interface - Prepay Overtime	G10	301
DENY	283	Denied		BNS: Coinless (IPP fka COCOT)	G10	314
DENY	284	Denied		BNS: IC Public - Standard Interface	G10	305
DENY	285	Denied		BNS: Voice Quote - without tax	o6	450
DENY	286	Denied		BNS: Voice Quote - with tax	o6	451
DENY	287	Denied		BNS: IPP (fka COCOT) - Alternate Interface	G10	312
DENY	288	Denied		BNS: Hospital	G4	226
DENY	289	Denied		BNS: Prison (non-IPP fka COCOT)	G10	315
DENY	290	Denied		BNS: LEC Semi-Public	G10	308
DENY	291	Denied		BNS: Subsystem Congestion	S	180
DENY	292	Denied		BNS: Subsystem Failure	S	180
DENY	293	Denied		BNS: No translation for address of such nature	S	180
DENY	294	Denied		BNS: Unequipped User	S	999
DENY	295	Denied		BNS: Network Failure	S	180
DENY	296	Denied		BNS: Network congestion	S	999
DENY	297	Denied		BNS: Cellular (cellular is distinct from mobile)	G8	231
DENY	298	Denied		BNS and Calling Card - Although the NPANXX belongs to SWBT the end-user account number is no longer is a SWBT customer. The line number now belongs to another local service provider.	G4	228
DENY	299	Failure		LNP Only Look-Up, the NPANXX is not a portable range.	LNP	000
DENY	301	Denied	Y	Denied Originating Number (ANI) - The ANI has an Admin. block to automatically decline all attempts from this line number. (Admin. Reply)	G2	183
DENY	302	Denied	Y	Terminating Number (DNI) has an Admin. block to automatically decline all attempts to this line number. (Admin. Reply)	G2	182
DENY	303	Denied	Y	Calling card has an Admin. block to automatically decline all attempts to this line number. (Admin. Reply)	G2	000
DENY	304	Denied	Y	Collect Number has an Admin. block to automatically decline all attempts to this line number. (Admin. Reply)	G2	000

US 7,848,500 B2

33

34

TABLE 3-continued

LIDB/LNP SOURCE TRANSLATIONS for ISP:						
Resp. Type In	Resp. Code In	ACTION	LIDB ADMIN?	Description	rtfc type	Code Out
DENY	305	Denied	Y	Third Party Number has an Admin. block to automatically decline all attempts to this line number. (Admin. Reply)	G2	000
DENY	306	Denied	Y	Commercial credit card has an Admin. block to automatically decline all attempts to this line number. (Admin. Reply)	G2	000
DENY	307	Denied	Y	Group Number has an Admin. block to automatically decline all attempts from this group. (Admin. Reply)	G2	000
DENY	308	Denied	Y	Global Negative Database Block - There is an Admin. block in the Global Negative Database to this line number for the Audiotext Industry. (Admin. Reply)	G2	000
DENY	309	Denied	Y	Excessive calling card PIN hits - The threshold for bad PIN attempts for a calling card was exceeded in the Admin. fraud control system (Admin. Reply). This is the same as reply code 055.	G2	000
DENY	400	Denied		Commercial credit card, Invalid Commercial credit card - This is not a valid commercial credit card account number. It failed the MOD 10 check. Also an invalid amount, invalid date or a format error may cause this response. (Host or Admin. Reply)		506
DENY	401	Denied		Commercial credit card, Call issuer - The authorization attempt triggered a flag in the fraud control system of the issuing bank, Banknet or VISAnet.		507
DENY	402	Denied		Commercial credit card, Confiscate card - No billing is allowed to this account number. If possible confiscate this card.		508
DENY	403	Denied		Commercial credit card, Authorization Declined - No billing is allowed to this account number.		509
DENY	404	Denied		Commercial credit card, Unable to Validate Account Number - There is problem in authorizing this account number.		510
DENY	405	Denied		Commercial credit card, Card expired - No billing is allowed to this account number because the card has expired		511
DENY	406	Denied		Commercial credit card - Invalid Merchant ID		512
DENY	408	Denied		Commercial credit card, Invalid card and Address (zip code) - Both the account number and the address or zip code are invalid. Do not allow billing to this account number.		513
DENY	409	Denied		Commercial credit card, System Problem - There is a technical problem with the authorization system of the issuing bank, Banknet or VISAnet.		514
DENY	420	Denied		Commercial credit card, Over withdrawal limit - This account has exceeded the withdrawal threshold in the authorization system of the issuing bank		515
DENY	421	Denied		Commercial credit card, Over credit limit - This account has exceeded the credit threshold in the authorization system of the issuing bank		516
DENY	422	Denied		Commercial credit card, Lost card, Confiscate - This account number was reported lost. No billing is allowed to this account number. If possible confiscate this card.		517

US 7,848,500 B2

35

36

TABLE 3-continued

LIDB/LNP SOURCE TRANSLATIONS for ISP:						
Resp. Type In	Resp. Code In	ACTION	LIDB ADMIN?	Description	rtfc type	Code Out
DENY	423	Denied		Commercial credit card, Stolen card, Confiscate card - This card was reported stolen. No billing is allowed to this account number. If possible confiscate this card.		518
DENY	424	Denied		Commercial credit card, Invalid Pin - This means a bad PIN was used.		519
DENY	425	Denied		Commercial credit card, Allowable Number of PIN Tries Exceeded - The threshold for bad PIN attempts for a calling card was exceeded in the authorization system of the issuing bank, Banknet or VISA.net.		520
DENY	426	Denied		Duplicate transaction. The Authorization host considers this a duplicate transaction.		521

In the embodiment of the invention depicted in the drawings, regardless of the type of service provider or the type of validation request, clients or vendors may need a profile so that the process or method carried out by the system 10 knows how to treat the request. The client or vendor profile may be set up in a database, which includes the indicators that are set

for the type and tests for each request, which will be subsequently received from the vendor.

The first table shows the operations in the BTN test descriptions process. In one exemplary embodiment, a set of core tests is run for each client. Additionally, clients may have some configuration options to identify the tests that best fit their program.

BILLABLE BTN TESTS		
PROCESS	TESTs	PURPOSE
VAL/Pre-bill	Client profile	Client profile for each id for BTN validation process test flags.
VAL only	ANI = BTN	Determines if originating number = BTN input by caller.
VAL/Pre-bill	Invalid #	Ids Invalid NPAs & NXXs
VAL/Pre-bill	OFFNET	
VAL/Pre-bill	Global OFFNET	Ids (NPA)NXX & OCN combinations where there is not a B&C agreement
VAL/Pre-bill	Product	Ids (NPA)NXX & OCN combinations where the traffic type is not approved to bill (Jul. 24, 2001: MRC only for NECA and Illuminet Only)
VAL/Pre-bill	OFFNET	
VAL/Pre-bill	Client OFFNET	Ids (NPA)NXX & OCN combinations where there the Client id (7###) is not approved to bill
VAL/Pre-bill	Special Calling Card OFFNET	Ids (NPA)NXX & OCN combinations of special calling card #s for non-calling card traffic that are unable to be billed
VAL/Pre-bill	Plan OFFNET	Ids (NPA)NXX & OCN combinations where a Client Plan is not approved to bill
VAL/Pre-bill	ONNET	Ids (NPA)NXX & OCN combinations where there are B&C agreements
VAL/Pre-bill	CLEC	Ids (NPA)NXX-xxxx's are not billable due to CLEC for all Clients.
VAL/Pre-bill	4250 BLOCK	Ids (NPA)NXX-xxxx's that have a 4250 billing block (for MRC only)
VAL/Pre-bill	UNBILL	Ids (NPA)NXX-xxxx's that have unbilled previously for all Clients
VAL/Pre-bill	Block & Cancel - GLOBAL	Ids (NPA)NXX-xxxx's that requested a Block and/or Cancel; usually institutional
VAL/Pre-bill	Block & Cancel - Client Specific	Ids (NPA)NXX-xxxx's that requested a Block and/or Cancel for a particular Client id
VAL/1 <sup>st</sup> + n Pre-bill	Val Code Cache	Ids (NPA)NXX-xxxx & Return Code combinations for previous request
VAL/1 <sup>st</sup> Pre-bill	LIDB Validity Test	To determine the billable status of the return code from the LIDB dip
VAL/1 <sup>st</sup> Pre-bill	LIDB CLEC	Ids RAOs that belong to CLECs
VAL/1 <sup>st</sup> Pre-bill	RAO	

US 7,848,500 B2

37

38

-continued

BILLABLE BTN TESTs		
PROCESS	TESTs	PURPOSE
VAL/1 <sup>st</sup> Pre-bill	LIDB CLEC OCN	Ids known CLEC OCNs
VAL/1 <sup>st</sup> Pre-bill	LIDB State Specific Conversion	To determine if the returned LIDB code is a state specific code and then a conversion to the billable OCN for the ONNET check
VAL/1 <sup>st</sup> Pre-bill	LIDB ONNET	Ids billable (NPA)NXX & returned OCN combinations
ALL	VAL Trans Log	Log of each validation request and response by Client ID

BTN CREDIT SCORING		
PROCESS	TESTs	PURPOSE
VAL/Pre- bill	AREA CODE Change indicator	Provides the new area code for the line number while in permissive dialing period.
Val	ZIP MATCH	ZIP matches zip codes for (NPA) NXX (not in production as of June 2001)
VAL/Pre- bill	ANI WATCH - CLIENT (SOURCE: all)	(NPA)NXX-xxxx's where there a refund/chargeback has been issued previously for this Client ID
VAL/Pre- bill	ANI WATCH - CLIENT (SOURCE: client)	(NPA)NXX-xxxx's where there a refund has been issued previously for this Client ID
VAL/Pre- bill	ANI WATCH - CLIENT (SOURCE: ebi/telco)	(NPA)NXX-xxxx's where there a chargeback/bad debt has been issued previously for this Client ID
VAL/Pre- bill	ANI WATCH - GLOBAL (SOURCE: all)	(NPA)NXX-xxxx's where there a refund/chargeback/bad debt has been issued previously from CLIENT, ebi or telco
VAL/Pre- bill	ANI WATCH - PRODUCT (SOURCE: all)	(NPA)NXX-xxxx's where there a refund/chargeback/bad debt has been issued previously for the same product
VAL	Address Verification	Not Available

TEST BEFORE FIRST BTN BILLING		
PROCESS	TESTs	PURPOSE
VAL/Pre- bill	LEC CARE FEED	Determines if the ILEC owns the Acct. for billing
VAL/Pre- bill	Biz vs Res	Determines the commercial or consumer status for credit score

Example TESTs		
PROCESS	TESTs	PURPOSE
VAL/Pre- bill	Threshold by Client	Determines whether the BTN has met a Client specific threshold
VAL/Pre- bill	LEC PROV feed	To determine if LEC owns Acct
VAL/Pre- bill	Credit Check	Credit header files check from Credit source
VAL/Pre- bill	New within 90 days	Determines if BTN is less than 90 days old; affects credit score

## ON/OFFNET Family Tables (Billing Coverage)

The OFFNET table family contains OCN & NPA\_NXX combinations where billing is not approved. If found, the BTN does not continue on the validation path.

The ONNET table determines if an NPA\_NXX & OCN combination can be found among the billable combinations. In this case a match allows the BTN to move further on the validation path. A no match will return a failure.

The CLEC table consists of CLECs that the proprietor, or user of the system 10, does not have billing contracts with. This table is specific to the line number. Sources dictate the fields that will be present for the record. A match here is considered a fail and does not continue.

The 4250 Block table consists of specific line numbers that cannot be billed for 4250-01 record types. A match in this table stops the validation movement.

## Bill Control Family Tables

The Unbills or unbillable table holds all the BTNs that have been sent to a subscribers' bill page but could not be placed on the bill page for various reasons. A match here halts the validation sequence for the subject BTN.

Block and cancel tables identify BTNs that have requested a permanent or a Client specific block for billing. A match sends a failed response.



US 7,848,500 B2

39

Validation Cache is a table that holds responses in order not to process duplicates (e.g. Submit pressed 10 times). A match here will return the code stored from a previous request.

#### LIDB Family Tables

LIDB is a third party that supplies information to the phone line number level. The goal is to test and store as many relevant fields as can be requested in a transaction.

The LIDB Validity Table translates the LIDB code into a billable or non-billable response according to predefined business rules. A fail here will halt the validation for the request.

The State specific table is a conversion from a true OCN to a known State Specific OCN that is billable. A match here will trigger the conversion, the BTN continues in the validation process.

The transaction log is the history of each transaction request and response that is processed through the validation system.

The TPM indicates that an NPA is in the permissive dialing period. A match here appends the record with the updated number for a record update.

The ANI Watch has BTNs that have been given an adjustment for charges by the Client, proprietor or user of the system 10 or the Telco. This is to help the client determine the credit score for the BTN.

Unlike the conventional use of the LIDB database that uses the LIDB data to obtain information on a destination/termination or recipient location or subscriber unit, the system 10, in one exemplary embodiment, uses the industry standard LIDB database to obtain relevant information on the initiating subscriber line. The subscriber line reference data obtained from the LIDB database is then processed to generate modified validity codes, which provide a vendor with data to facilitate deciding whether or not a transaction should be processed. The LIDB/LNP database may be queried as if a collect call event is occurring and a call is thus mimicked. The processing of the transaction, in one exemplary embodiment, involves communicating the relevant transaction data to a folder of the subscriber with a relevant Telco. The method of, and system 10 for, validating the billing account associated with the subscriber line allows, for example, a subscriber line to be used to validate and conclude a transaction instead of using a conventional payment techniques such as a credit card, debit card, bank account details or the like.

A current industry-wide problem is the lack of ability of a service provider to identify when a line subscriber has switched his service to a CLEC since the service provider may not have an existing billing arrangement with such a CLEC and may also not have a source for the BNA to allow for a direct billing solution. LNP databases were originally established for the purpose of directing call routing activities among facilities-based carriers and most telephone numbers ported to a CLEC do not involve a facility change (i.e. the CLEC is simply reselling the incumbent LEC's facilities). This means that, for billing decision purposes, LNP queries may provide an incorrect response.

In one embodiment of the present invention, the LNP queries have been enhanced by analyzing and interpreting other field elements included within the query response. Specifically, certain values or, in some cases, the absence of certain values, in the Operating Company Number ("OCN") and/or the Regional Accounting Office ("RAO") fields, allows further accuracy in the validation response. While the definitions of the OCN and RAO field elements can be obtained from industry sources, their interpreted use in the validation pro-

40

cess is unique to the present invention. Use of these additional data elements can improve the reliability of the validation event.

In addition, the present invention may include supplementing LNP results with CARE queries in LEC regions where LNP results are inadequate and CARE costs are not otherwise prohibitive based on the retail price of the underlying service. CARE may provide a reliable result on CLEC-ported numbers since its basic purpose is to provide subscriber account information (such as billing name and address). Once a number is ported to a CLEC, the incumbent LEC no longer has subscriber responsibility and will, therefore, return an "unavailable" response, even if the LEC's dial-tone facility is still being utilized. This negative response is then used to generate a "deny" status on the subscriber based on the current lack of CLEC billing support.

The exemplary embodiment of the present invention may supplement the validation process through the use of internal databases built from information gathered throughout the billing and collection process and process logic gleaned from previous billing experience.

It is important to appreciate that all of the operations in the method executed by the system 10 need not be executed in real-time. In one exemplary embodiment, after the approval code 000 has been generated by the system 10 at operation 134, the system 10 terminates its pre-validation check routine as shown at operation 136. At this point the system 10 may merely provide pre-validation data or verification data to indicate to the vendor 12 whether or not the subscriber line is billable. Thus the system 10 may, in a first interaction with the vendor 12 provide pre-validation data, and in a second interaction process billing information. During the processing of billing information the validation process may once again be executed. In certain embodiments, the first interaction may be in the form of a registration process during which the validation procedure is carried out to register a subscriber line. The vendor may then conduct numerous transactions with subscriber and subsequent validation checks on the subscriber line may then only be carried out on a periodic basis.

After the validation code has been sent to the vendor 12, and the pre-validation procedure has been completed, the system 10 then carries out the fraud checks on a non real-time basis (usually during the next 48 to 72 hours) as shown in operations 140 to 144. The information obtained during the fraud control check, if necessary, is used to update the various databases. In particular, after a BTN has been successfully validated but before a billing event takes place, the CARE investigation operations 140 to 144 may be executed. In the exemplary embodiment, the system 10 is arranged to interrogate off-site CARE databases and the results of the enquiry are stored in the CARE database 46. Checks on the data received from the CARE databases are then performed; whereafter one or more of the other databases may be updated with the results. For example, the CARE database may be updated with new within 90 days information, business indicator information, or the like. In the exemplary embodiment, CARE codes 2618 and 2619 indicate that the BNA is not available and that the LEC no longer owns the account.

The updating of the databases following the CARE investigation may allow enhanced future checks by the system 10 in a subsequent pre-validation procedure or subsequent registration validation event. The updated information may be provided to the vendor 12. However, if the BTN information returned from the CARE database does not meet predefined criteria, the other databases of the system 10 may not be updated.

US 7,848,500 B2

41

In the embodiment described above, information on the subscriber line 17 is forwarded by the service provider or vendor 12 to the system 10 for validation. However, in other embodiments of the invention, the consumer or customer 11 may call the system 10 directly, as shown by line 150 in FIG. 5, and the ANI may then be obtained by the system 10 directly from the customer 11 and not indirectly from the vendor 12. Further subscriber line data, e.g. BTN, address of the customer 11 and so on, may then also be obtained directly from the customer 11. For example, the customer 11 may have appropriate software installed on his/her PC which allows the customer 11 to dial into the system 10 in an automated fashion should he/she wish to charge any requested goods or services to his/her subscriber account. The system 10 would then validate the subscriber line number 17 using the method described above. The system 10 then typically communicates a validation code (e.g. corresponding to approval or non-approval) to the vendor 12 as shown by line 152. The vendor 12 would then conclude the transaction with the customer 11 if the subscriber line has been validated.

The proprietor or user of the system 10 may function as a type of clearing house. In particular, the proprietor or user of the system 10 may be responsible or accountable for payment for the goods or services for each transaction to the service provider or vendor 12 and, in turn, receive payment from the Telco 13. As mentioned above, the system 10 may update the telephone bill or account of the subscriber in an automated fashion (see line 154) and the account that the subscriber or customer 11 receives (see FIG. 6 and line 156 in FIG. 5) includes the charges for the goods and/or services provided by the vendor 12. The customer 11 may pay the Telco 13 (see line 155), the Telco 13 may pay the system 10 (see line 156), and the system 10 may pay the vendor 12 (see line 160). It is important to appreciate that these payments need not take place at the same time. In one exemplary embodiment, the payments between the Telco and the system 10, and the system 10 and vendor 12, take place periodically in a batch fashion.

FIG. 7 shows a diagrammatic representation of machine in the exemplary form of a computer system 600 within which a set of instructions, for causing the machine to perform any one of the methodologies discussed above, may be executed.

The computer system 600 includes a processor 602, a main memory 604 and a static memory 606, which communicate with each other via a bus 608. The computer system 600 may further include a video display unit 610 (e.g., a liquid crystal display (LCD) or a cathode ray tube (CRT)). The computer system 600 also includes an alpha-numeric input device 612 (e.g., a keyboard), a cursor control device 614 (e.g., a mouse), a disk drive unit 616, a signal generation device 618 (e.g., a speaker) and a network interface device 620.

The disk drive unit 616 includes a machine-readable medium 622 on which is stored a set of instructions (software) 624 embodying any one, or all, of the methodologies or functions described herein. The software 624 is also shown to reside, completely or at least partially, within the main memory 604 and/or within the processor 602. The software 624 may further be transmitted or received via the network interface device 620. For the purposes of this specification, the term "machine-readable medium" shall be taken to include any medium that is capable of storing, encoding or carrying a sequence of instructions for execution by the machine and that cause the machine to perform any one of the methodologies of the present invention. The term "machine-readable medium" shall accordingly be taken to include, but not be limited to, solid-state memories, optical and magnetic disks, and carrier wave signals.

42

Thus, a method and system to validate data associated with a subscriber line of a telecommunication network have been described. Although the present invention has been described with reference to specific exemplary embodiments, it will be evident that various modifications and changes may be made to these embodiments without departing from the broader spirit and scope of the invention. Accordingly, the specification and drawings are to be regarded in an illustrative rather than a restrictive sense.

The invention claimed is:

1. A computer-implemented method, the method comprising:

receiving a first request via the Internet for a first transaction for goods or services between a user and a vendor; obtaining a billing telephone number (BTN) of the user; automatically, utilizing an application programming interface, charging the first transaction to a subscriber account associated with the BTN;

detecting a second request via the Internet for a second transaction for goods or services between the user and a vendor;

automatically, using one or more processors, detecting that billing to the account associated with the BTN has been declined;

automatically detecting an event indicative of an option to charge the second transaction to the user using an alternative payment method, the detecting of the event being subsequent to the charging of the first transaction to the subscriber account associated with the BTN; and completing the second transaction using the alternative payment method and not debiting the subscriber account.

2. The method of claim 1, wherein the alternative payment method is a credit card payment method.

3. The method of claim 1, wherein the alternative payment method is a debit card payment method.

4. The method of claim 1, wherein the subscriber account is a telephone account.

5. The method of claim 4, wherein the billing is declined as the subscriber line has been blocked from further billing.

6. The method of claim 4, wherein the telephone number is associated with a wireless device.

7. The method of claim 4, wherein the telephone number is associated with a landline device.

8. The method of claim 1, wherein the first and second requests are received from a computer operatively connected to the Internet.

9. The method of claim 8, wherein the first transaction for goods or services is associated with an online game.

10. The method of claim 1, wherein the BTN is sourced from the user.

11. The method of claim 10, wherein the first transaction for goods or services is associated with an online game.

12. The method of claim 1, wherein the first transaction for goods or services is associated with an online game.

13. The method of claim 1, wherein:

the receiving of the first request is from a first vendor computer system, the first vendor computer system being controlled by a first vendor; and

the receiving of the second request is from a second vendor computer system, the second vendor computer system being controlled by a second vendor.

14. The method of claim 1, wherein the receiving of the second request is from a user computer system, the user computer system being controlled by the user.



US 7,848,500 B2

43

15. The method of claim 1, wherein the obtaining of the BTN of the user comprises utilizing an automatic number identification (ANI) service.

16. The method of claim 1, wherein the detecting that billing to the account associated with the BTN has been declined includes detecting a response code associated with telephone number associated with a wireless service provider.

17. A computer-implemented system comprising:

a receiving module configured to receive a first request via the Internet for a first transaction for goods or services between a user and a vendor and a second request via the Internet for a second transaction for goods or services between the user and a vendor;

a BTN module to obtain a billing telephone number (BTN) of the user;

a first charging module to charge, automatically, utilizing an application programming interface, the first transaction to a subscriber account associated with the BTN;

a first detector to detect, automatically, using one or more processors, that billing to the account associated with the BTN has been declined;

a second detector to detect, automatically, an event indicative of an option to charge the second transaction to the user using an alternative payment method, the event being subsequent to the charging of the first transaction to the account associated with the BTN; and

a second charging module to complete the second transaction using the alternative payment method and not debiting the subscriber account.

18. The system of claim 17, wherein the alternative payment method is a credit card payment method.

19. The system of claim 17, wherein the alternative payment method is a debit card payment method.

20. The system of claim 17, wherein the subscriber account is a telephone account.

21. The system of claim 20, wherein the billing is declined as the subscriber line has been blocked from further billing.

22. The system of claim 20, wherein the telephone number is associated with a wireless device.

23. The system of claim 20, wherein the telephone number is associated with a landline device.

24. The system of claim 17, wherein the first and second requests are received from a computer operatively connected to the Internet.

25. The system of claim 24, wherein the first transaction for goods or services is associated with an online game.

44

26. The system of claim 17, wherein the BTN is sourced from the user.

27. The system of claim 26, wherein the first transaction for goods or services is associated with an online game.

28. The system of claim 17, wherein the first transaction for goods or services is associated with an online game.

29. The system of claim 17, wherein:

the first request is from a first vendor computer system, the first vendor computer system being controlled by a first vendor; and

the second request is from a second vendor computer system, the second vendor computer system being controlled by a second vendor.

30. The system of claim 17, wherein the second request is from a user computer system, the user computer system being controlled by the user.

31. The system of claim 17, wherein the BTN of the user is obtained utilizing an automatic number identification (ANI) service.

32. The system of claim 17, wherein the detecting that billing to the account associated with the BTN has been declined includes detecting a response code associated with telephone number associated with a wireless service provider.

33. A machine-readable non-transitory medium having instruction data to cause a machine to:

receive a first request via the Internet for a first transaction for goods or services between a user and a vendor; obtain a billing telephone number (BTN) of the user; automatically, utilizing an application programming interface, charge the first transaction to a subscriber account associated with the BTN;

detect a second request via the Internet for a second transaction for goods or services between the user and a vendor;

automatically, using one or more processors, detect that billing to the account associated with the BTN has been declined;

automatically detect an event indicative of an option to charge the second transaction to the user using an alternative payment method, subsequent to the charging of the first transaction to the account associated with the BTN; and

complete the second transaction using the alternative payment method and not debiting the subscriber account.

\* \* \* \* \*

UNITED STATES PATENT AND TRADEMARK OFFICE  
**CERTIFICATE OF CORRECTION**

Page 1 of 2

PATENT NO. : 7,848,500 B2  
APPLICATION NO. : 11/836603  
DATED : December 7, 2010  
INVENTOR(S) : Joseph M. Lynam et al.

It is certified that error appears in the above-identified patent and that said Letters Patent is hereby corrected as shown below:

On Sheet 1 of 7, Reference Numeral 42, Figure 1, line 1, delete "ONET" and insert -- ONNET --, therefor.

On Sheet 1 of 7, Reference Numeral 44, Figure 1, lines 2-3, delete "VerifiCation" and insert -- Verification --, therefor.

On Sheet 3 of 7, Reference Numeral 94, Figure 3, line 1, delete "Responce" and insert -- Response --, therefor.

On Sheet 3 of 7, Reference Numeral 96, Figure 3, line 3, delete "Responce" and insert -- Response --, therefor.

On Sheet 4 of 7, Reference Numeral 142, Figure 4, line 3, delete "day?" and insert -- days? --, therefor.

On Sheet 6 of 7, Figure 6, after Total Monthly, line 14, delete "Chargers" and insert -- Charges --, therefor.

On Sheet 6 of 7, Figure 6, line 30, delete "Ammount" and insert -- Amount --, therefor.

In column 4, line 3, delete "NPA INXX" and insert -- NPA/NXX --, therefor.

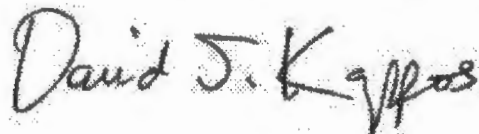
In column 8, line 17, delete "Telco's'" and insert -- Telco's --, therefor.

In column 15, line 50, delete "Bock" and insert -- Block --, therefor.

In column 23, line 58, delete "POTs" and insert -- POTS --, therefor.

In column 23, line 74, delete "That" and insert -- that --, therefor.

Signed and Sealed this  
First Day of March, 2011



David J. Kappos  
Director of the United States Patent and Trademark Office



**CERTIFICATE OF CORRECTION (continued)**

Page 2 of 2

**U.S. Pat. No. 7,848,500 B2**

In column 25, line 7, after “only” insert -- ) --.