



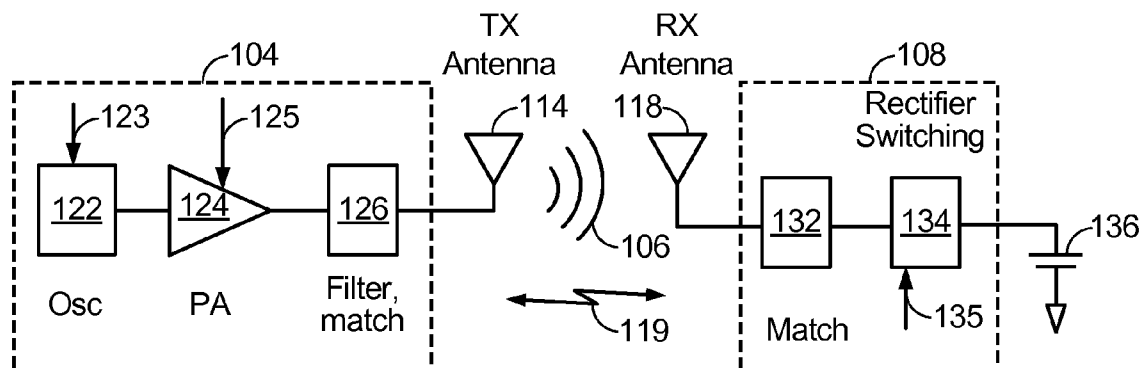
US 20100207572A1

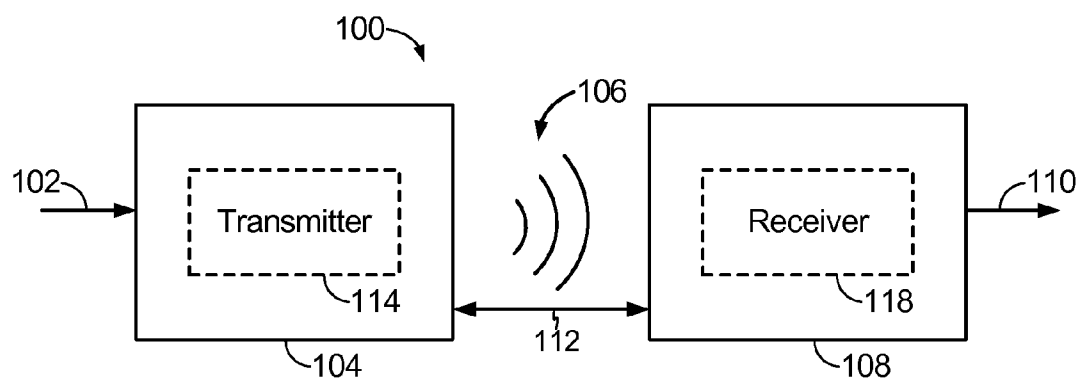
(19) **United States**(12) **Patent Application Publication**  
**Kirby et al.**(10) **Pub. No.: US 2010/0207572 A1**(43) **Pub. Date: Aug. 19, 2010**(54) **WIRELESS POWER FROM RENEWABLE  
ENERGY**(21) Appl. No.: **12/572,393**(22) Filed: **Oct. 2, 2009****Related U.S. Application Data**(75) Inventors: **Miles Alexander Lyell Kirby**, San  
Diego, CA (US); **Virginia Walker**  
**Keating**, San Diego, CA (US);  
**Matthew Stuart Grob**, La Jolla,  
CA (US); **Michael Mangan**, San  
Diego, CA (US); **Joel Bernarte**,  
San Diego, CA (US)(60) Provisional application No. 61/152,664, filed on Feb.  
13, 2009.**Publication Classification**(51) **Int. Cl.**  
**H02J 7/00** (2006.01)  
**H02J 17/00** (2006.01)  
**B60L 1/00** (2006.01)  
(52) **U.S. Cl.** ..... **320/101; 320/108; 307/9.1**  
(57) **ABSTRACT**

Correspondence Address:

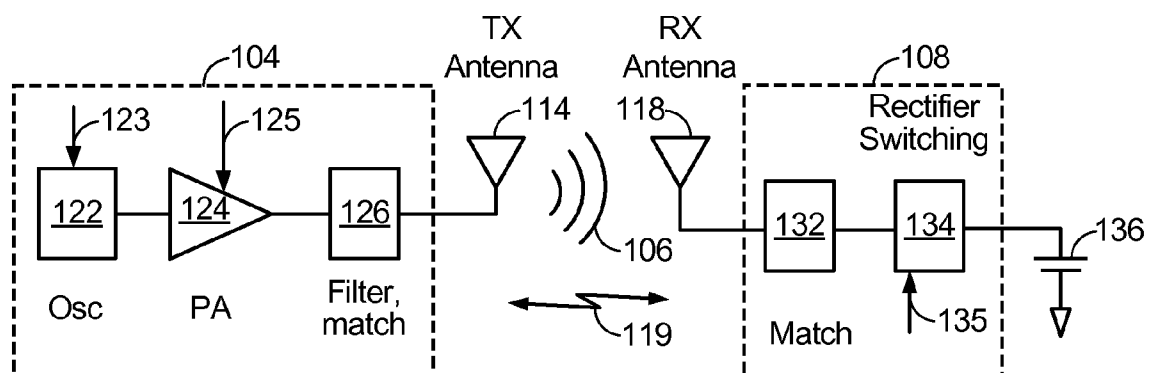
**QUALCOMM INCORPORATED**  
**5775 MOREHOUSE DR.**  
**SAN DIEGO, CA 92121 (US)**(73) Assignee: **QUALCOMM**  
**INCORPORATED**, San Diego,  
CA (US)

Exemplary embodiments are directed to wireless charging. A charging system may comprise at least one power generation system configured to convert renewable energy to another form of energy and convey the another form of energy. The charging system may further include at least one transmit antenna coupled to the at least one power generation system and configured to receive the another form of energy from the at least one power generation system. Further, the at least one transmit antenna is configured to wirelessly transmit energy to at least one other antenna positioned within an associated coupling-mode region.

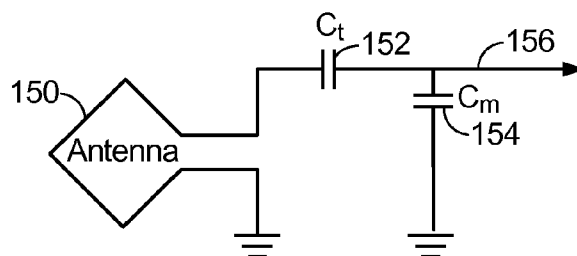




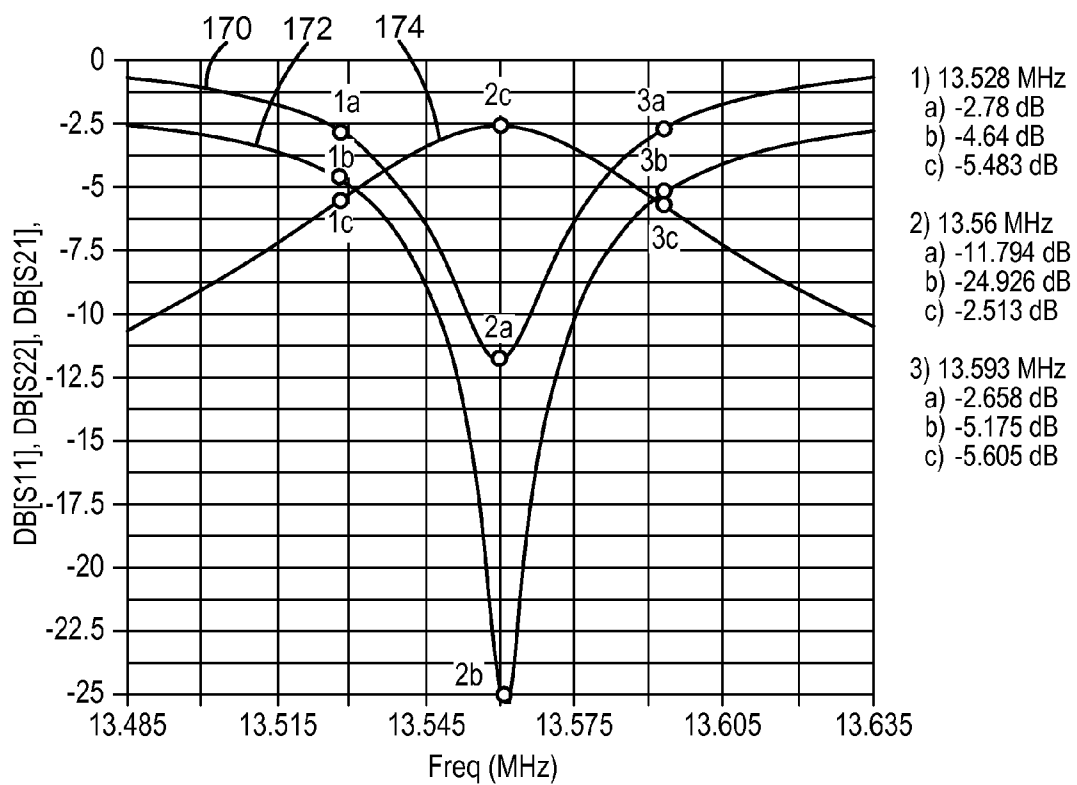
**FIG. 1**



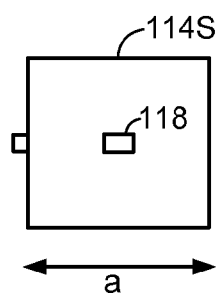
**FIG. 2**



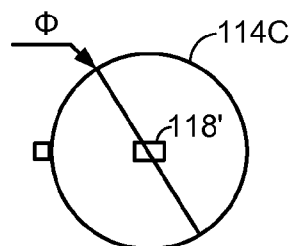
**FIG. 3**



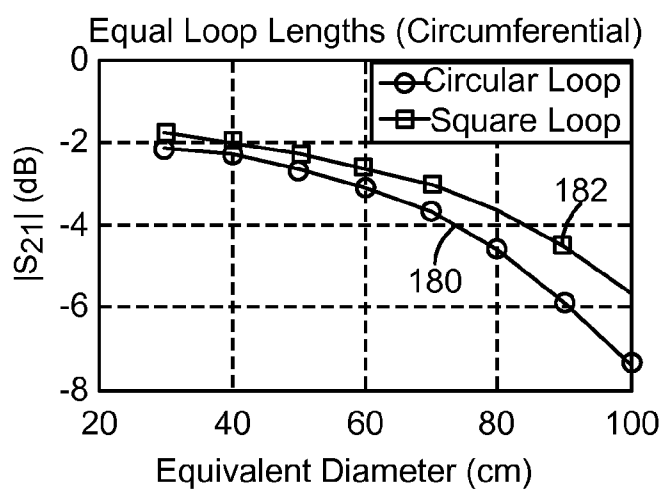
**FIG. 4**



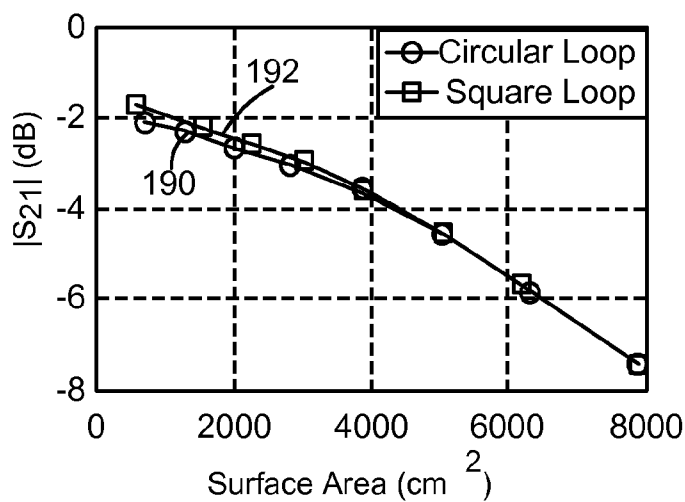
**FIG. 5A**



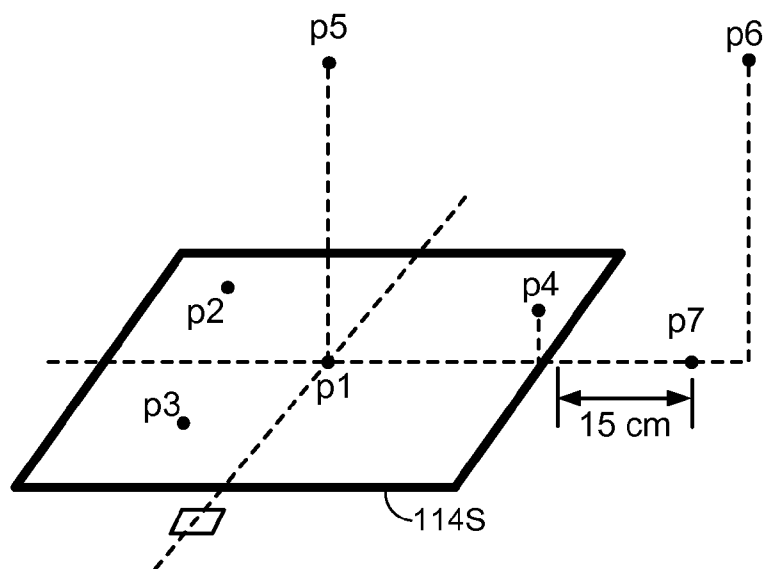
**FIG. 5B**



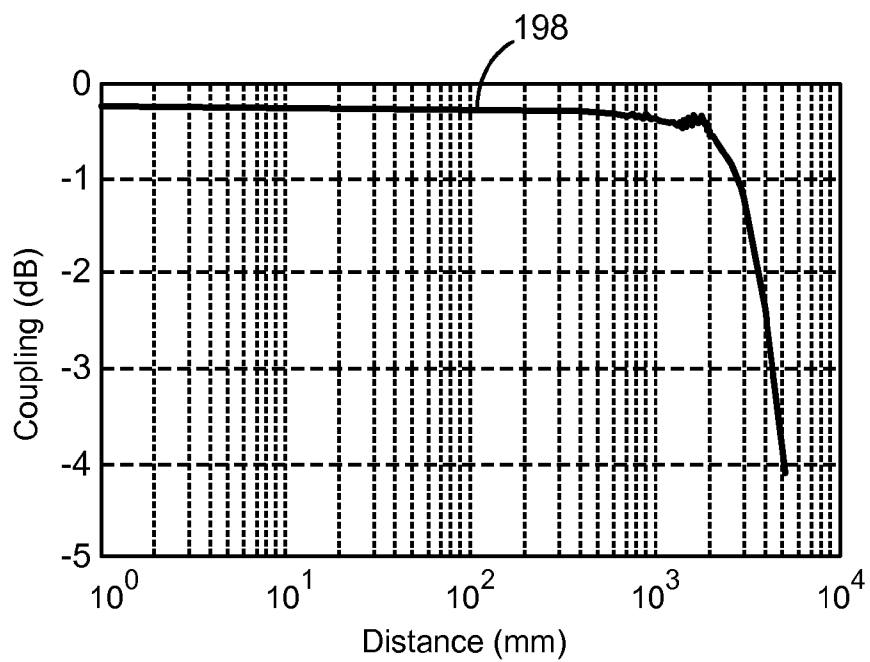
**FIG. 6**



**FIG. 7**



**FIG. 8**



**FIG. 9**

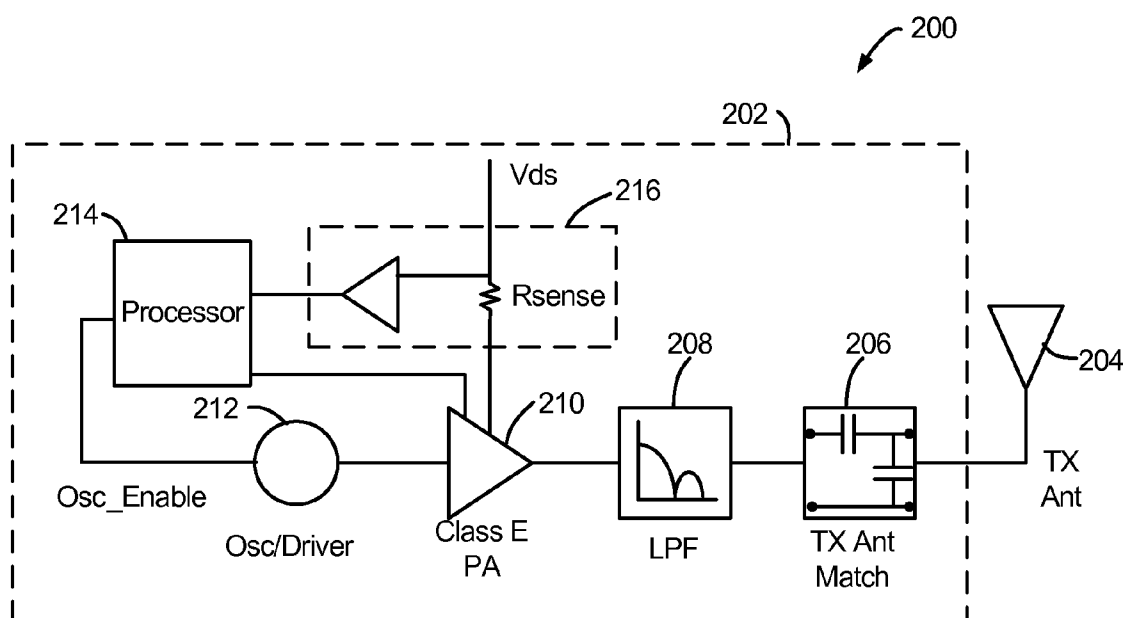


FIG. 10

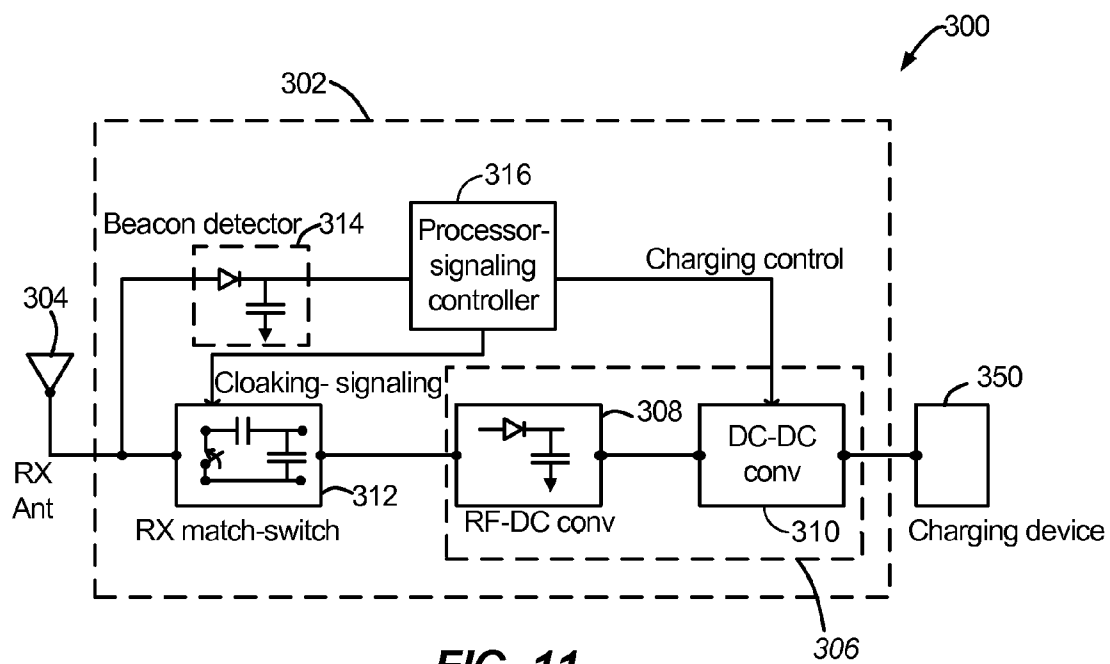
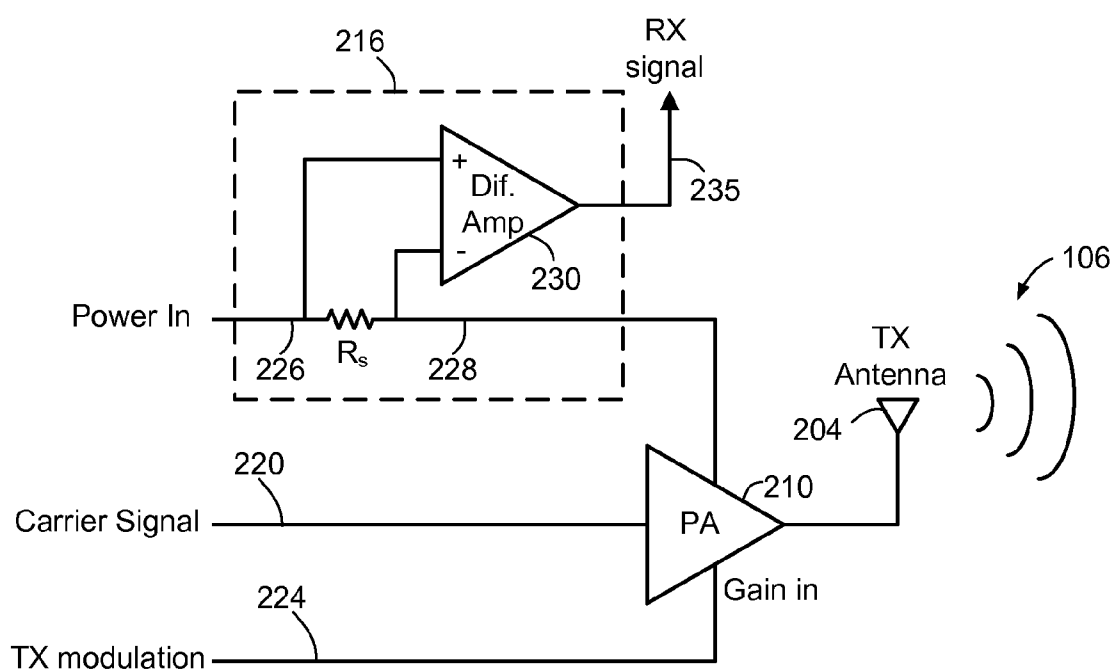
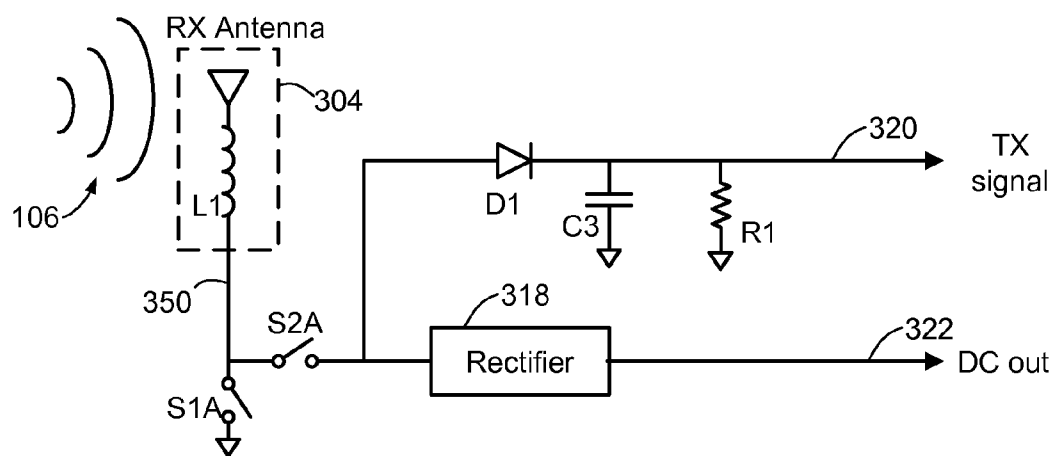


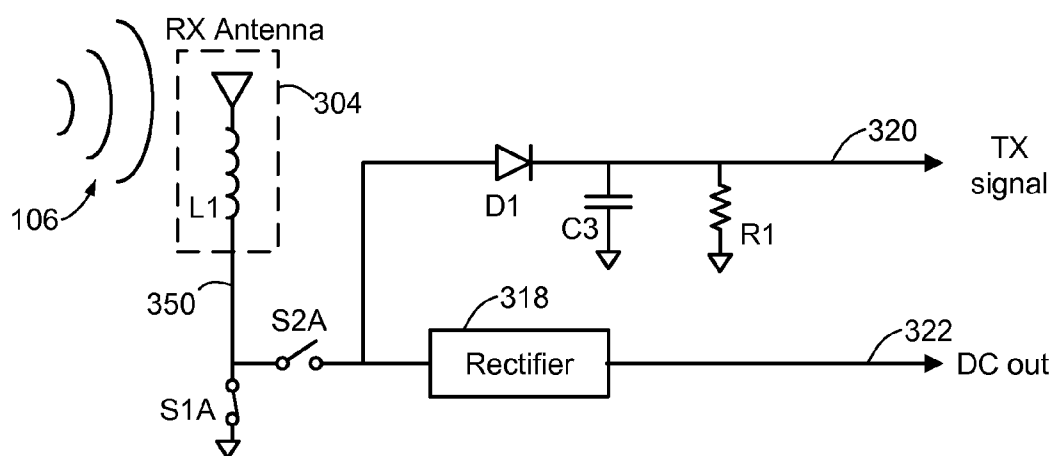
FIG. 11



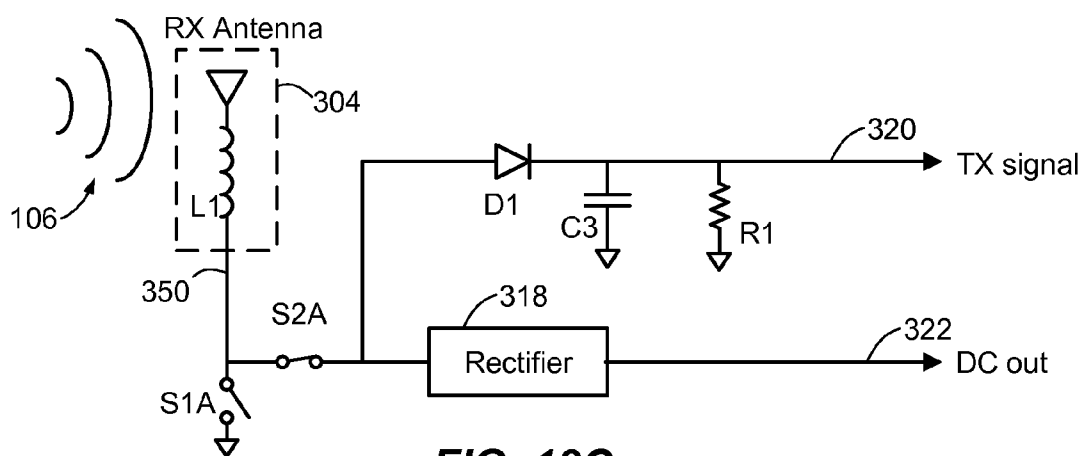
**FIG. 12**



**FIG. 13A**

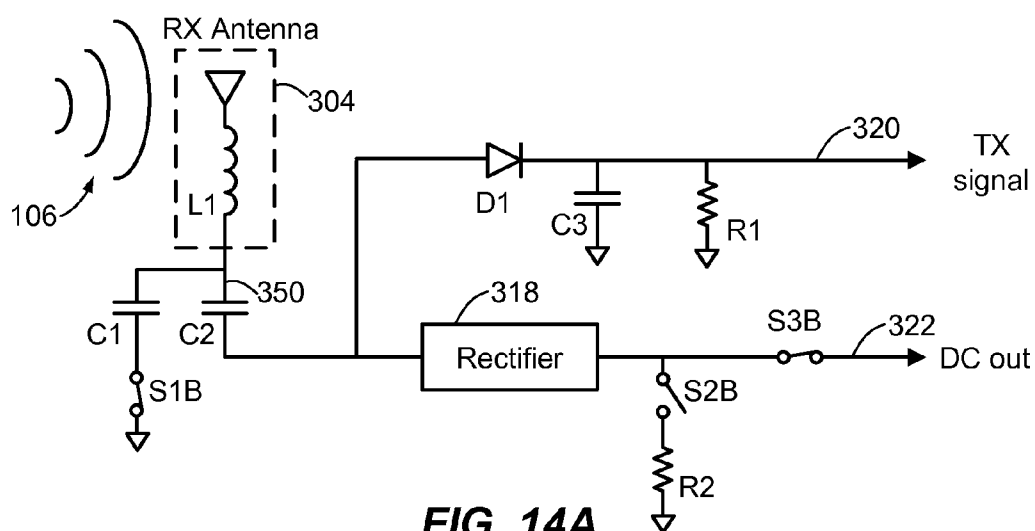


**FIG. 13B**

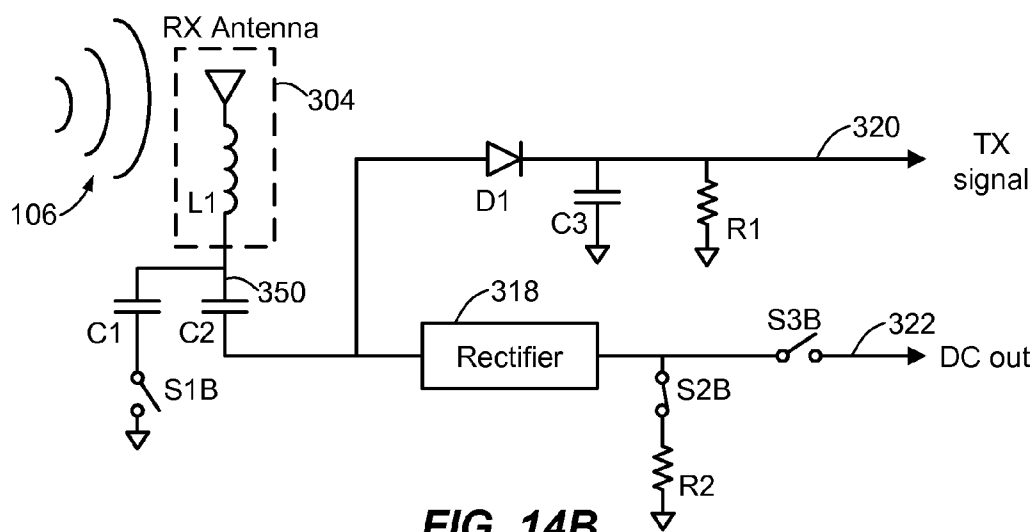


**FIG. 13C**

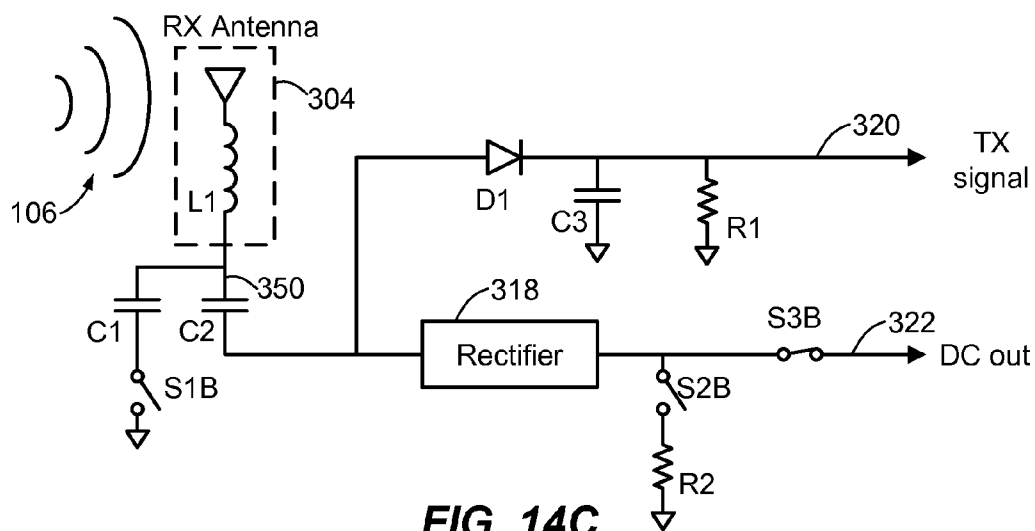




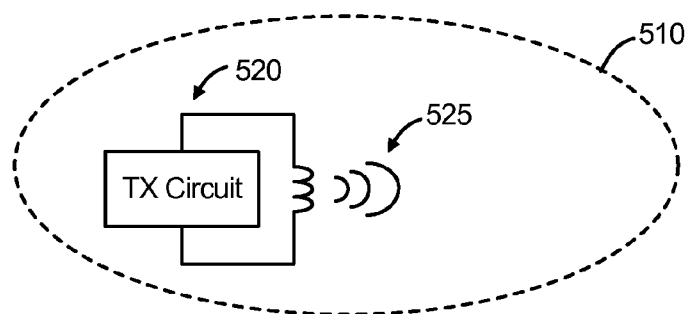
**FIG. 14A**



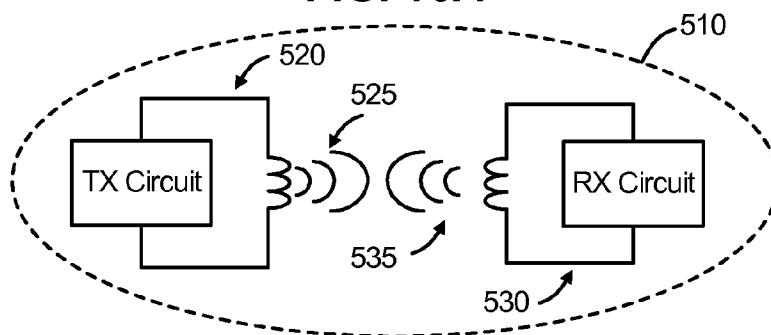
**FIG. 14B**



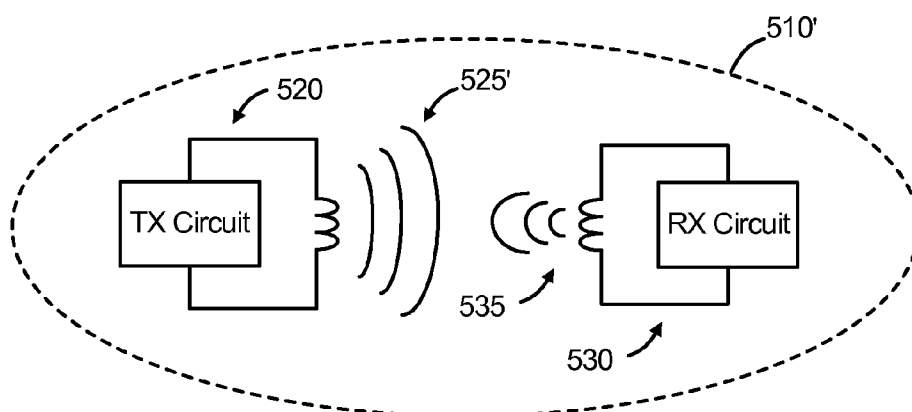
**FIG. 14C**



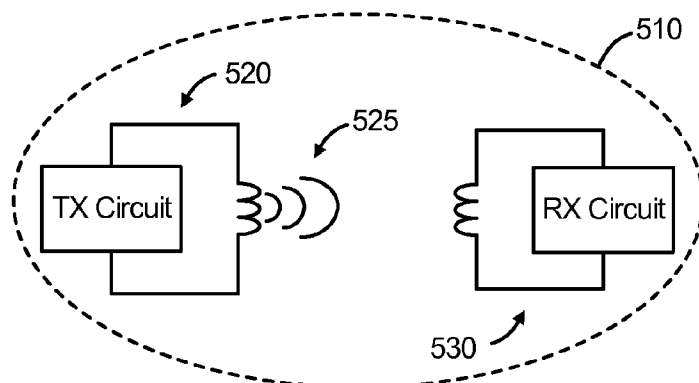
**FIG. 15A**



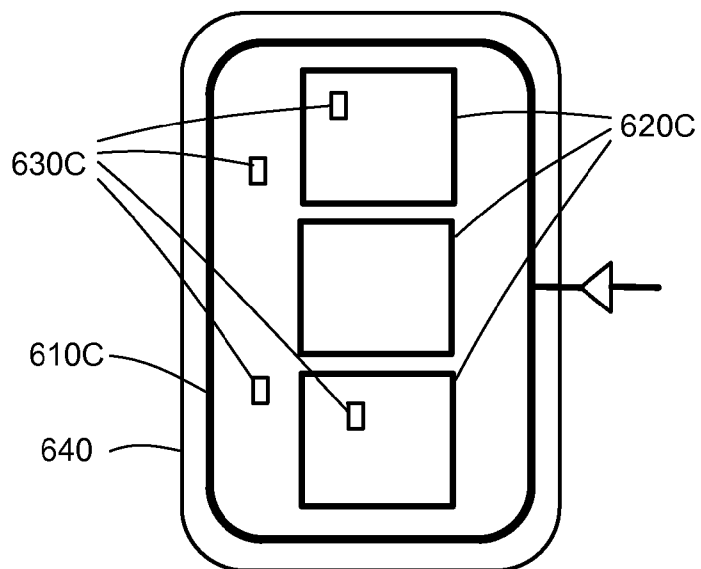
**FIG. 15B**



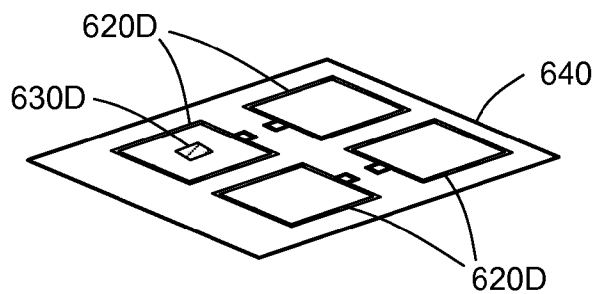
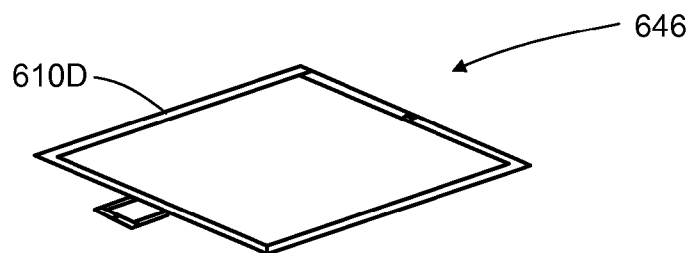
**FIG. 15C**



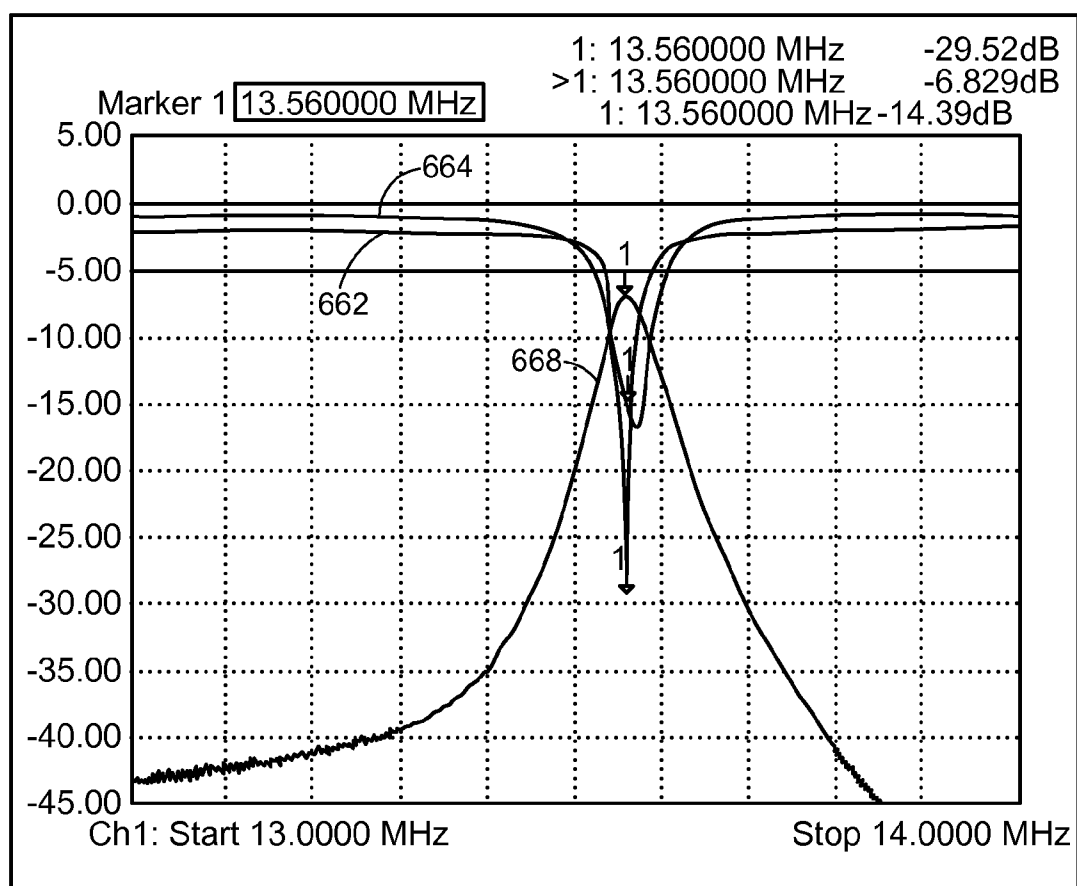
**FIG. 15D**

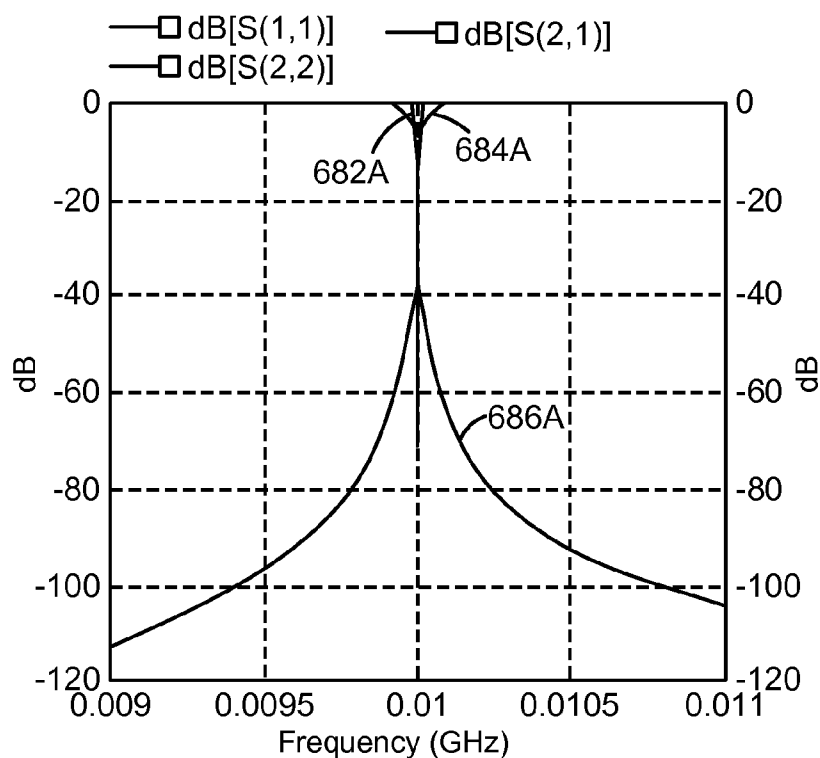


**FIG. 16A**

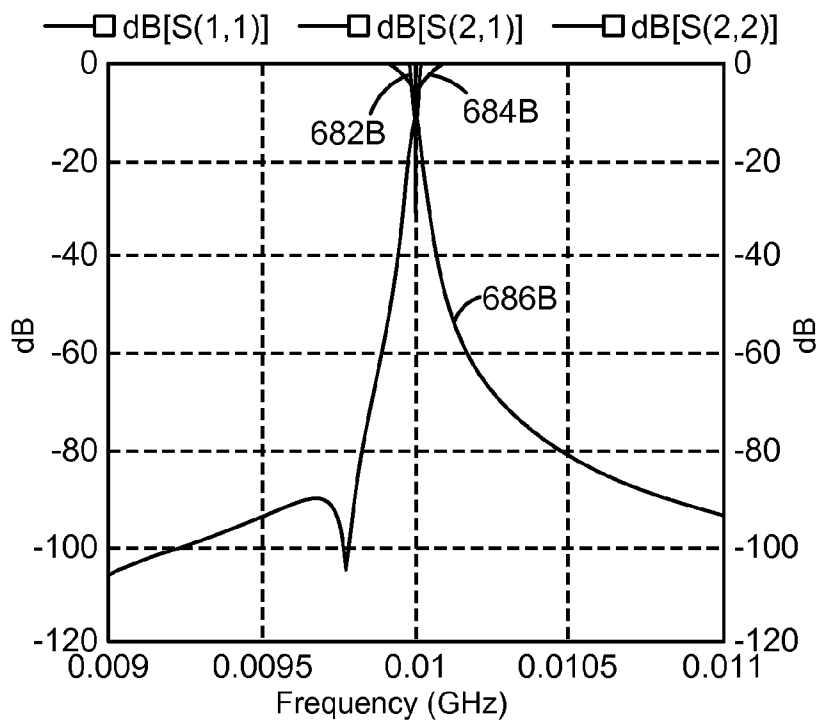


**FIG. 16B**

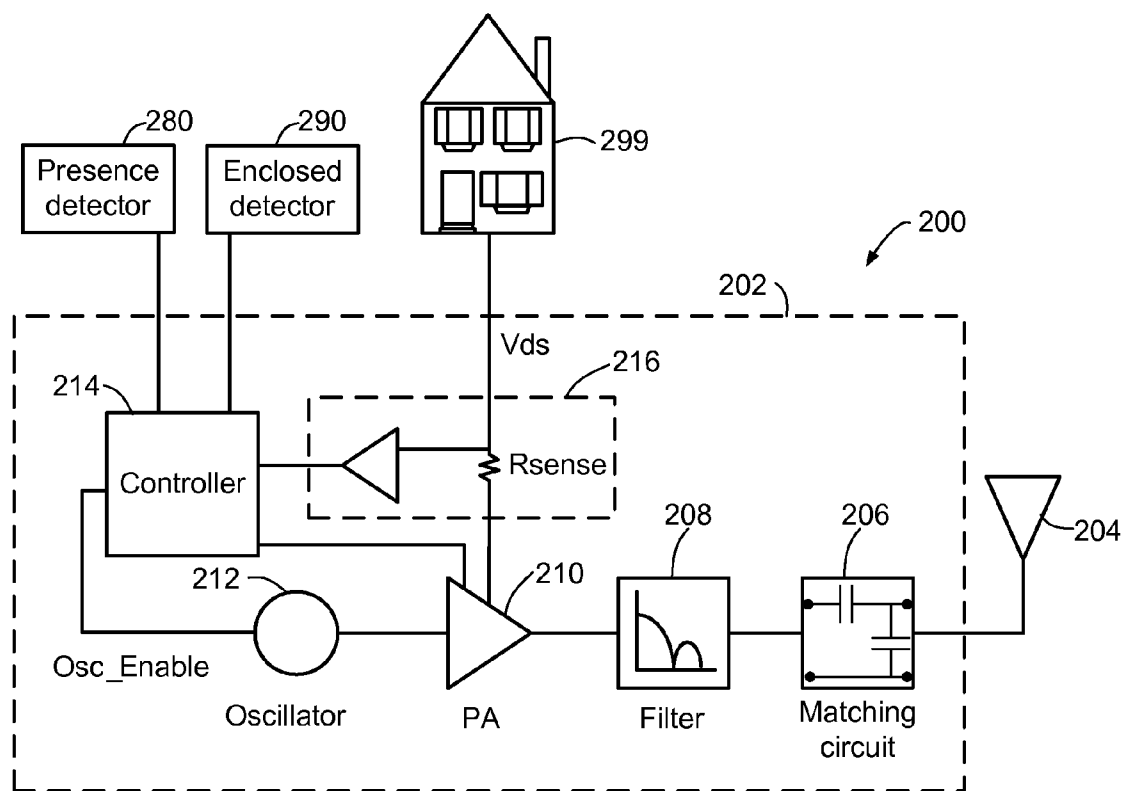
**FIG. 17**



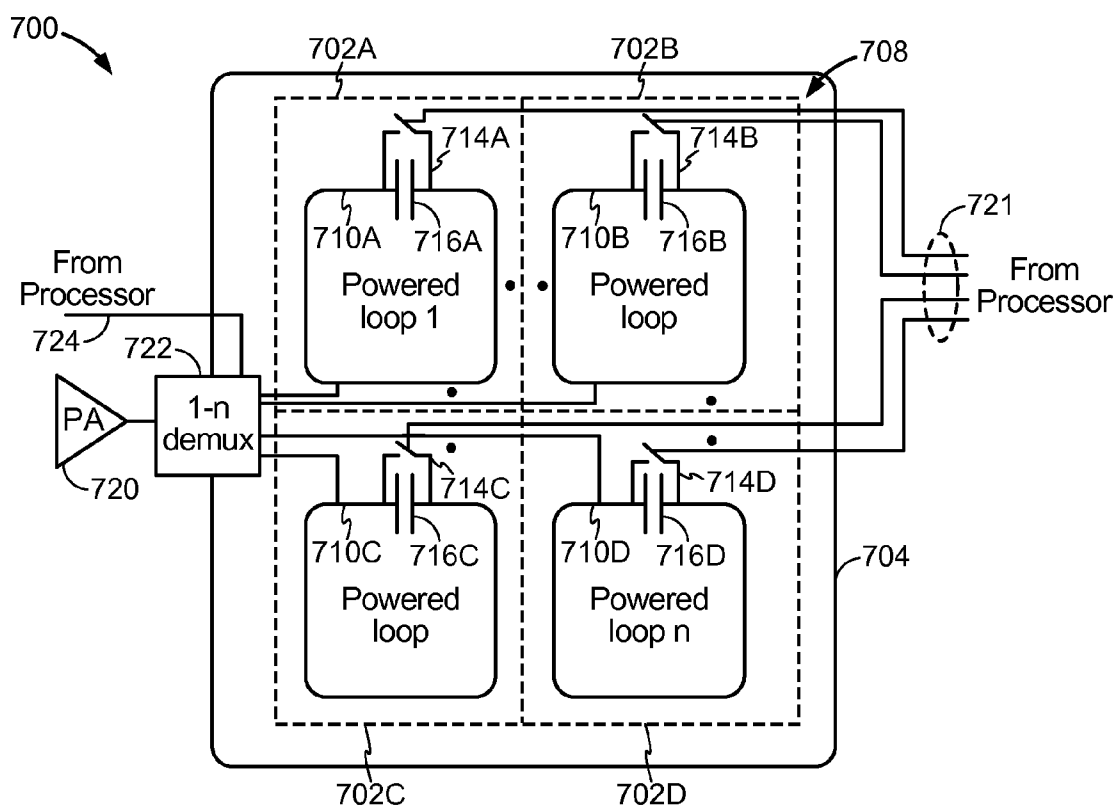
**FIG. 18A**



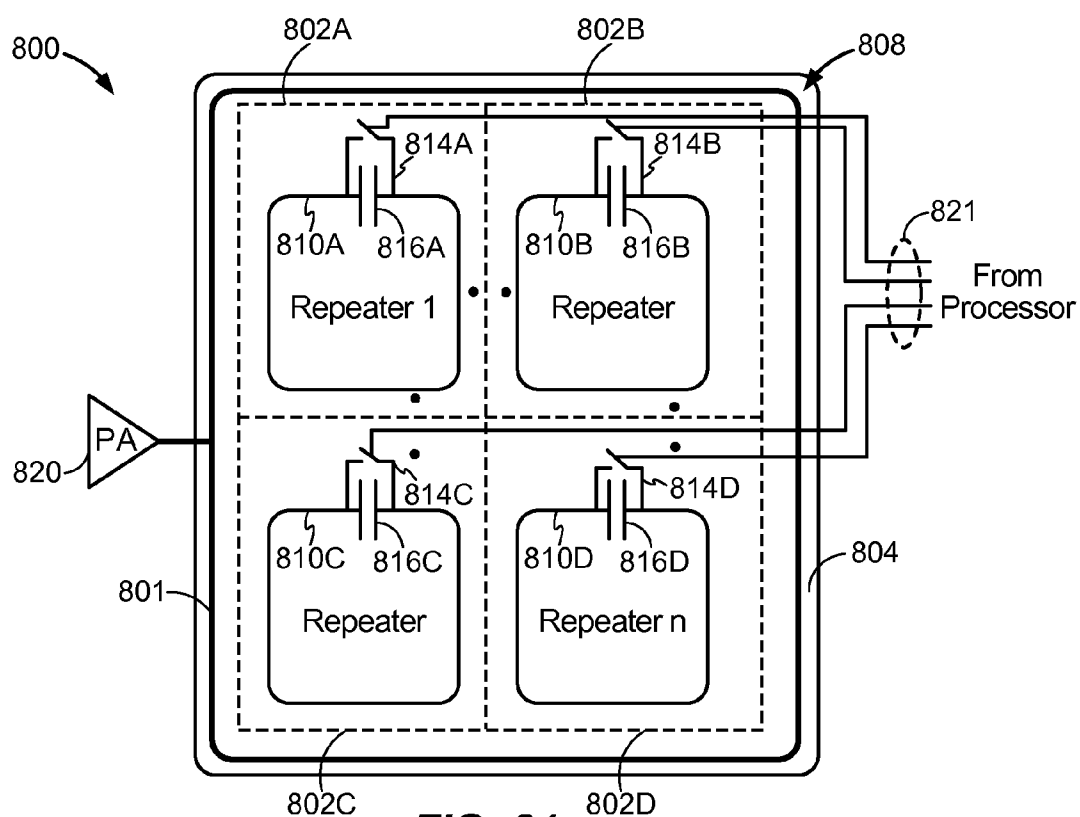
**FIG. 18B**



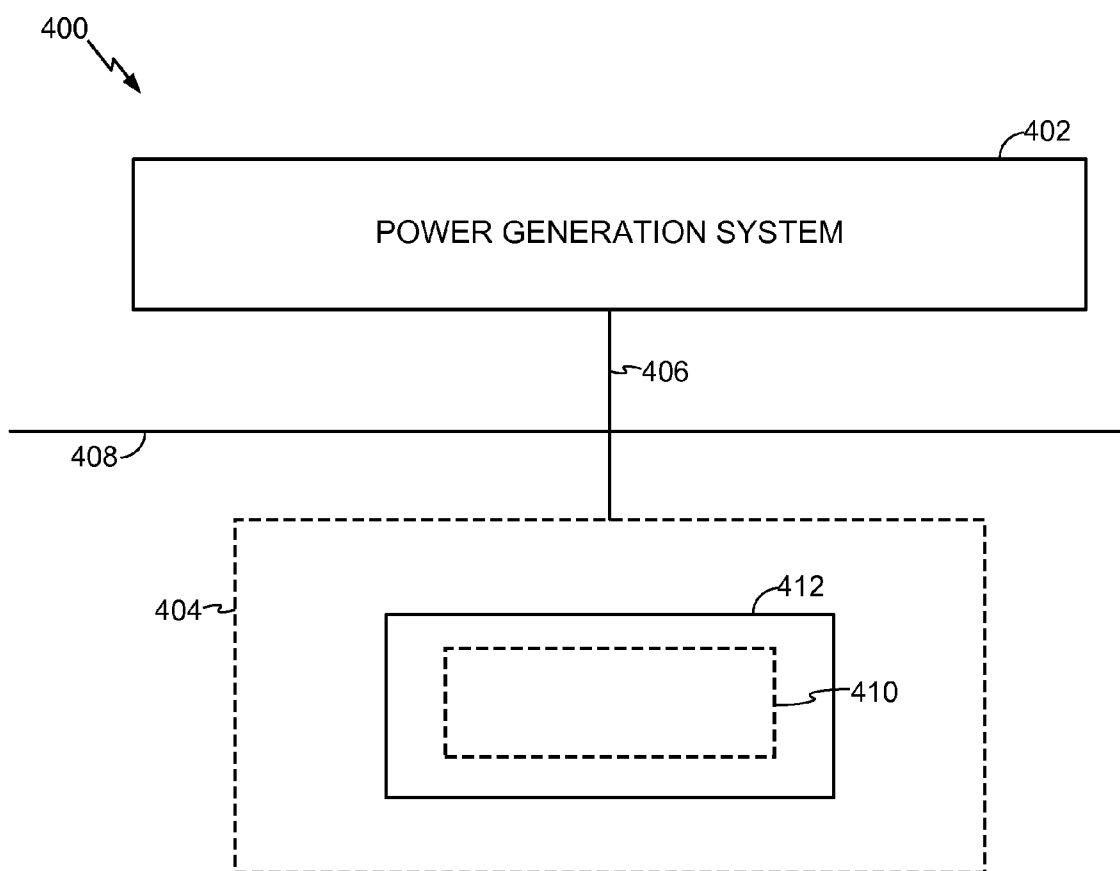
**FIG. 19**



**FIG. 20**

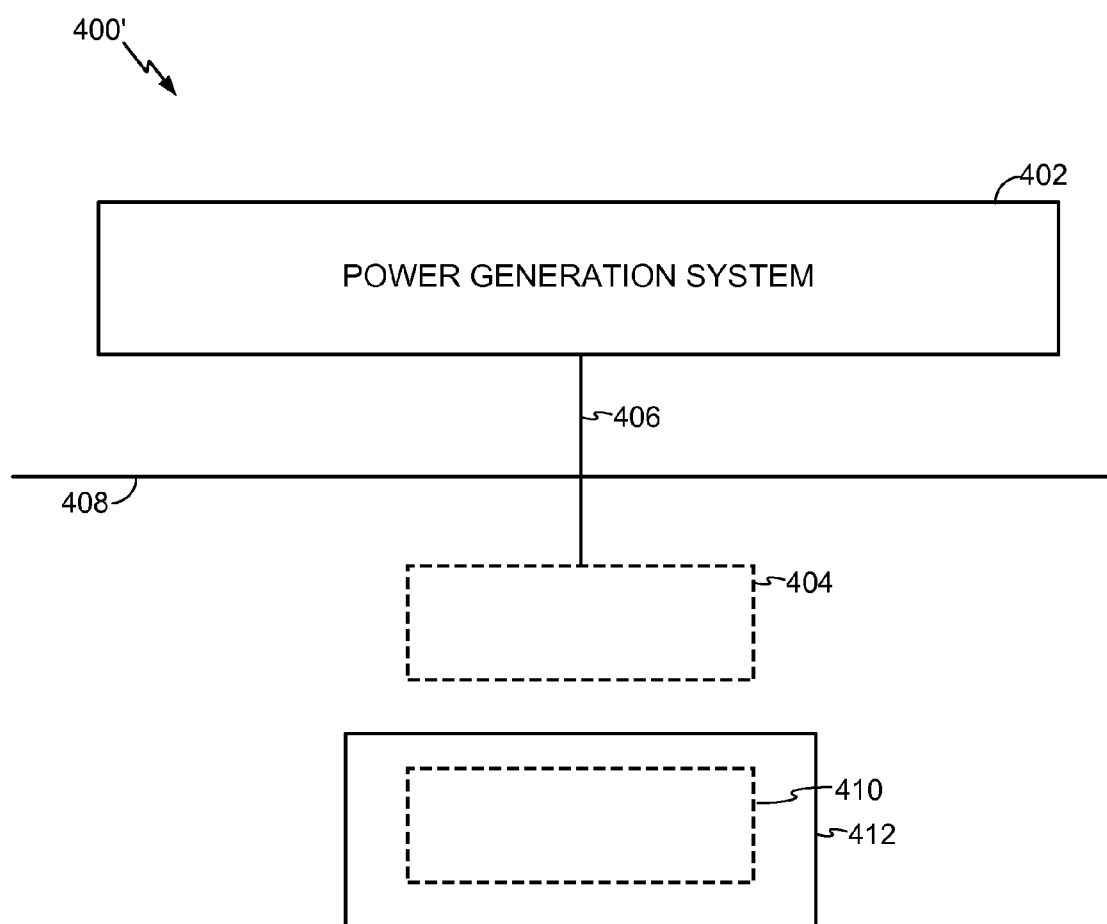


**FIG. 21**

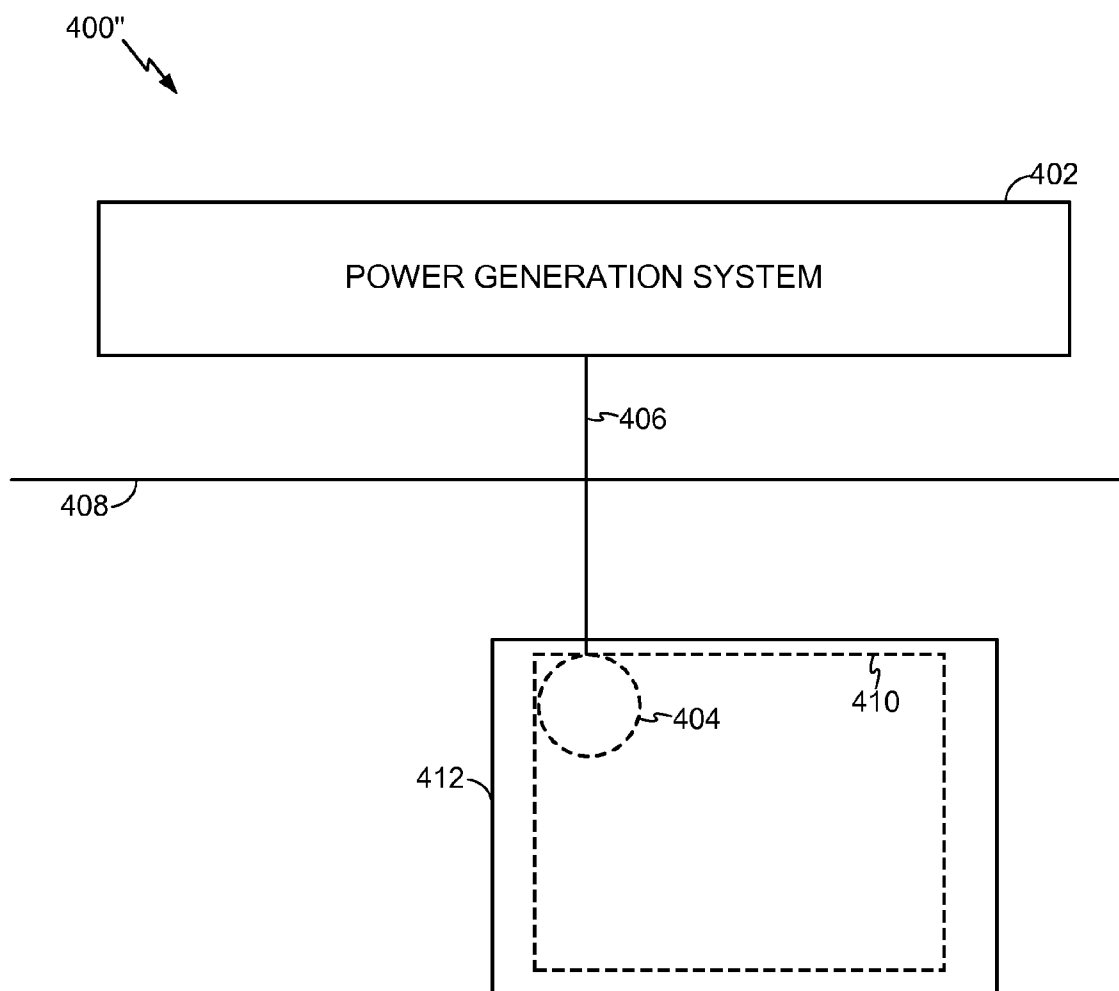


**FIG. 22**

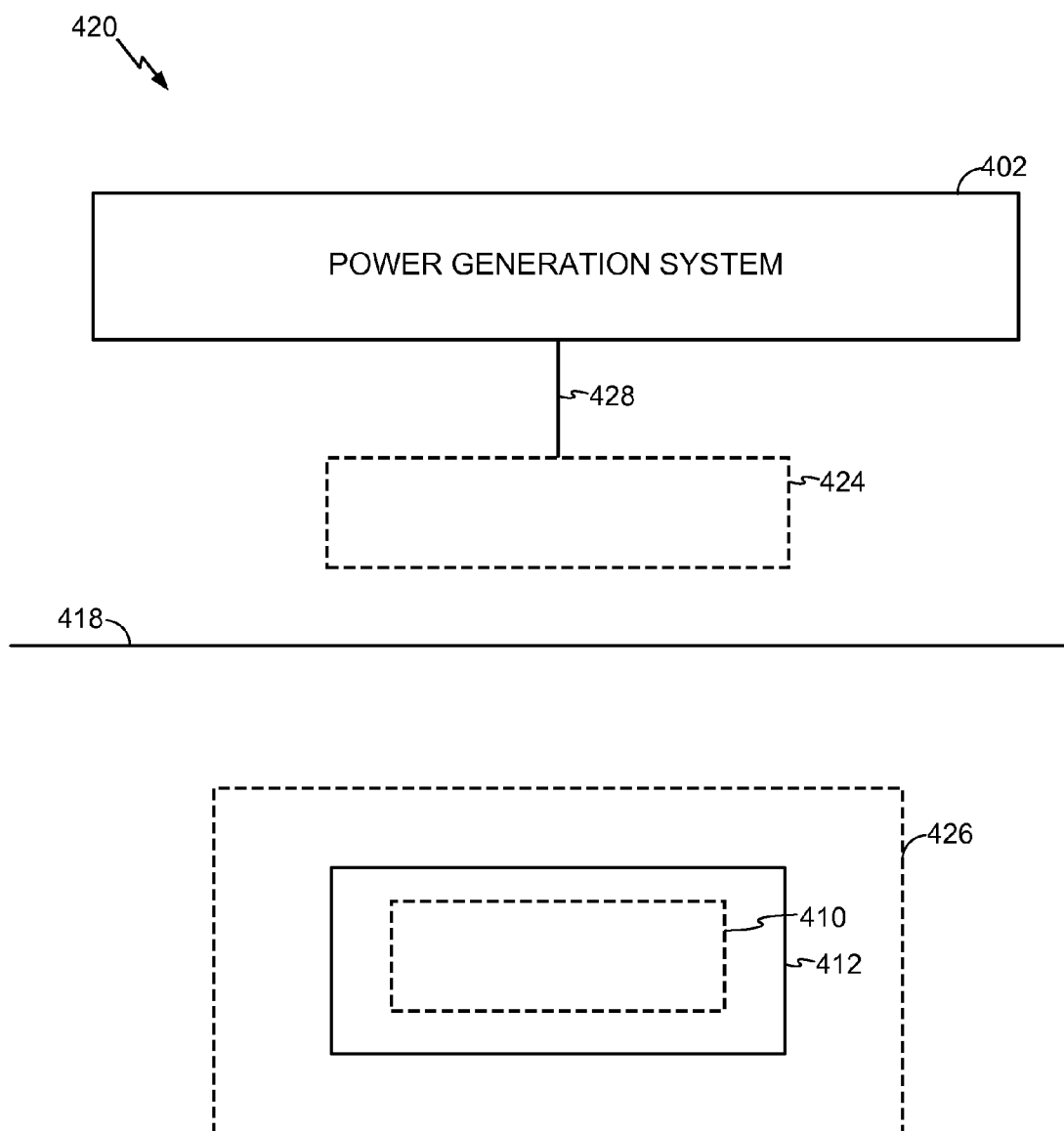




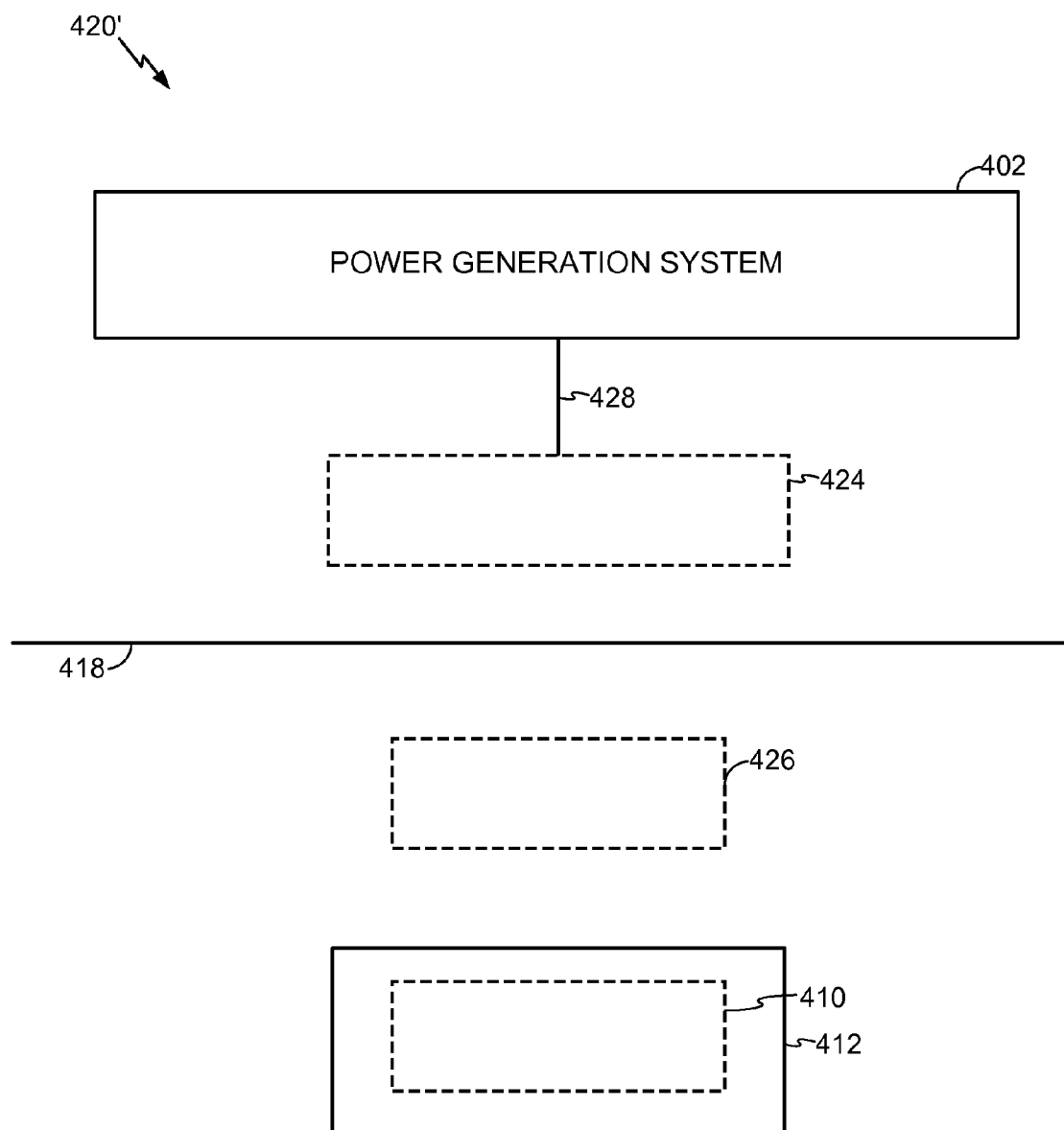
**FIG. 23**



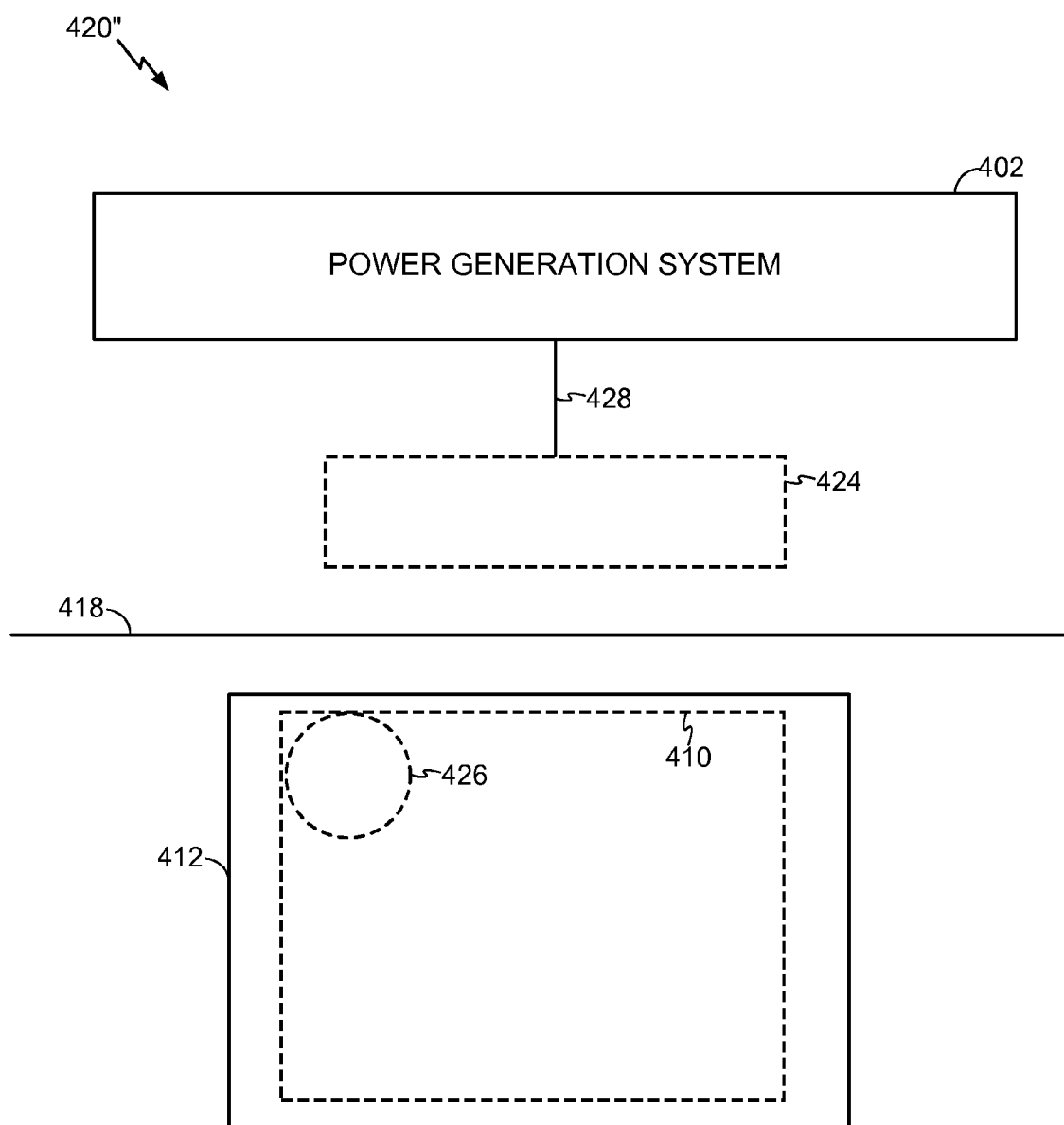
**FIG. 24**



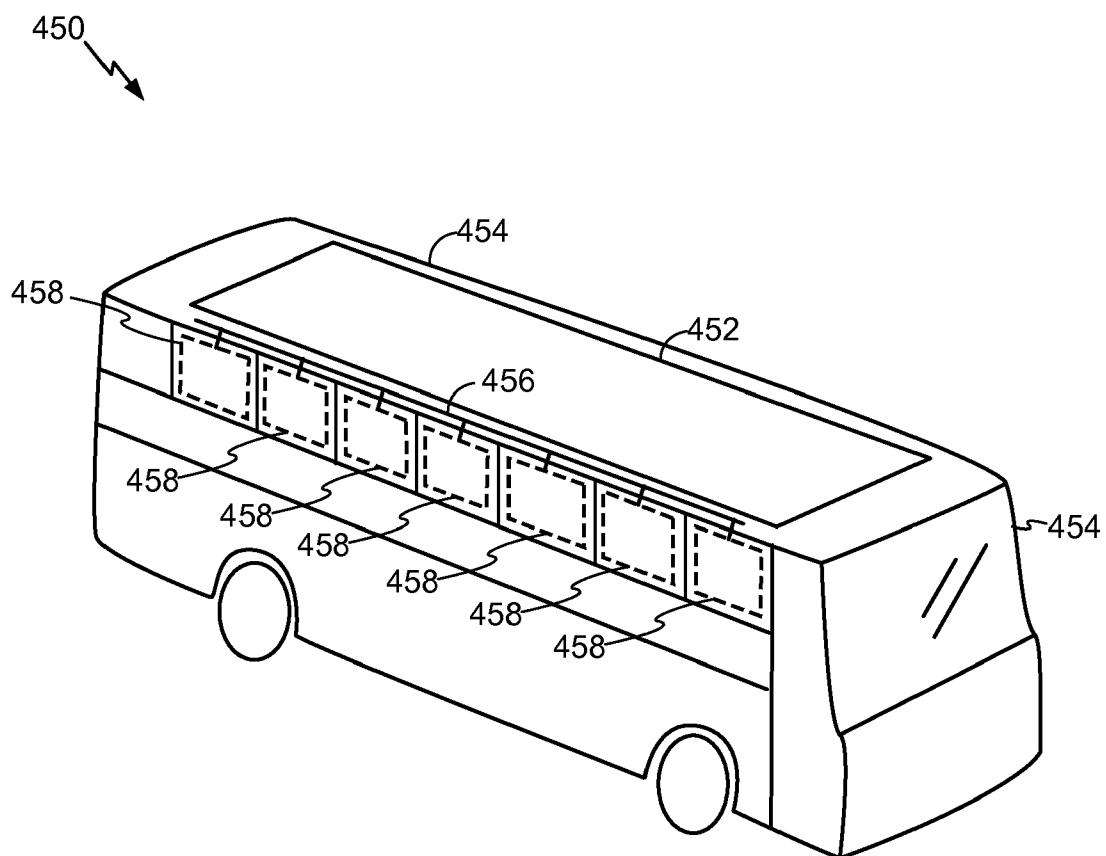
**FIG. 25**



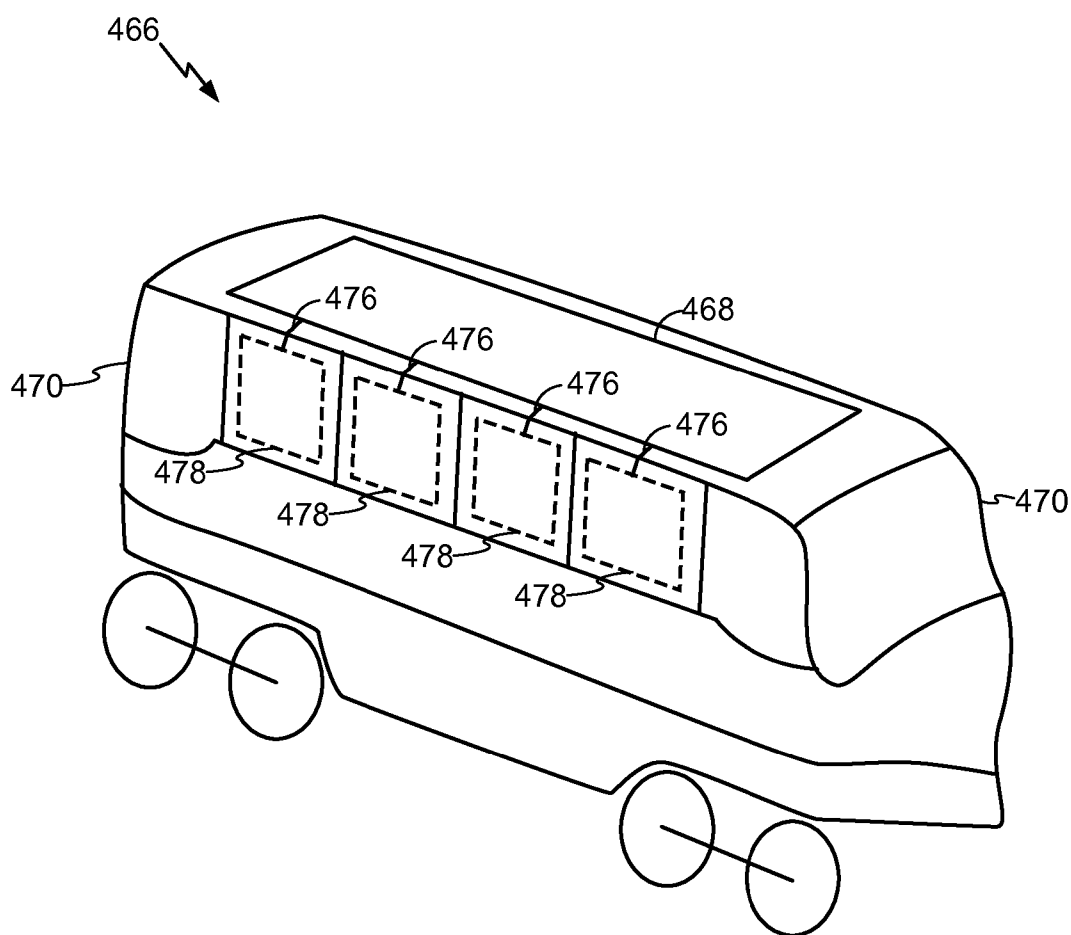
**FIG. 26**



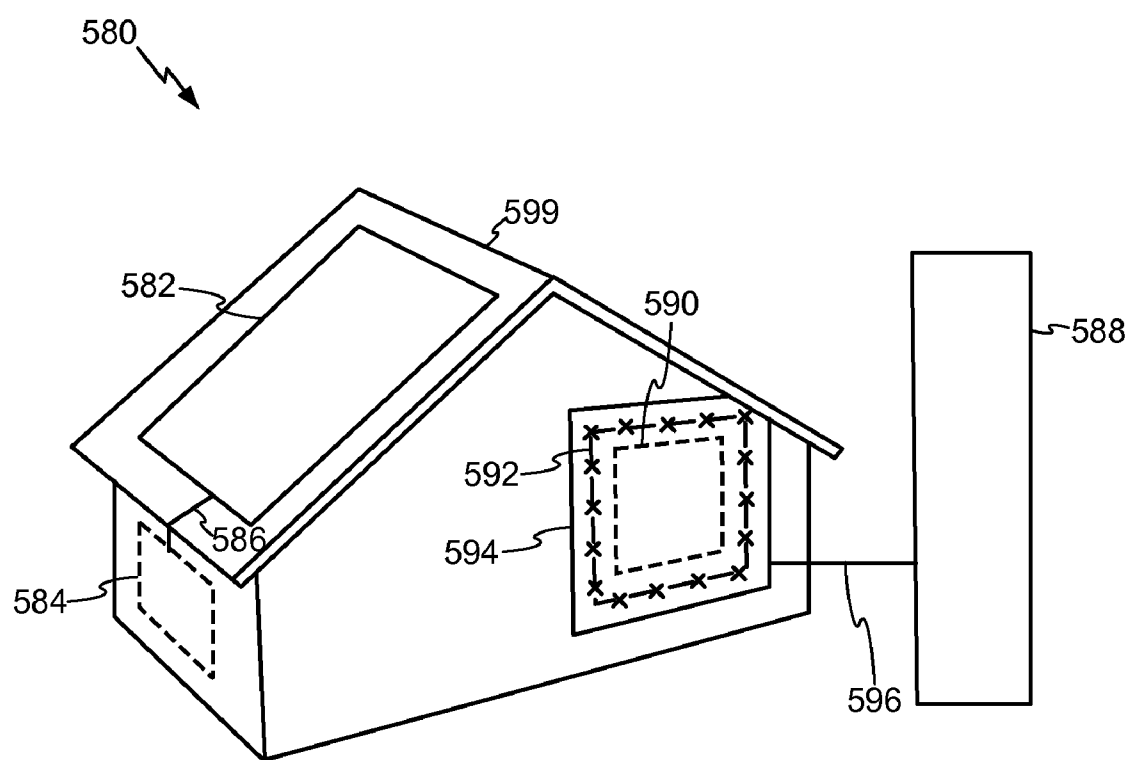
**FIG. 27**



**FIG. 28**

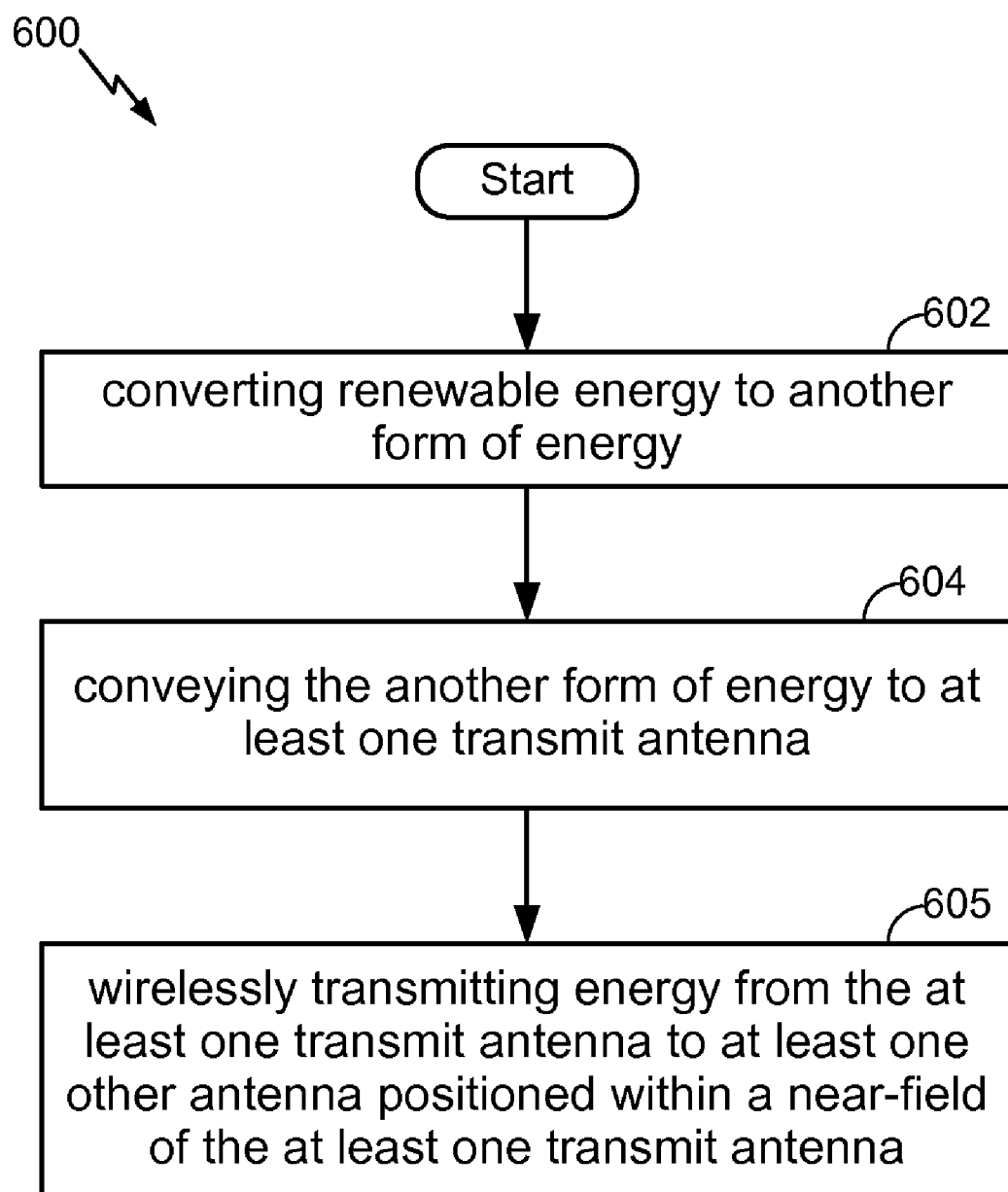


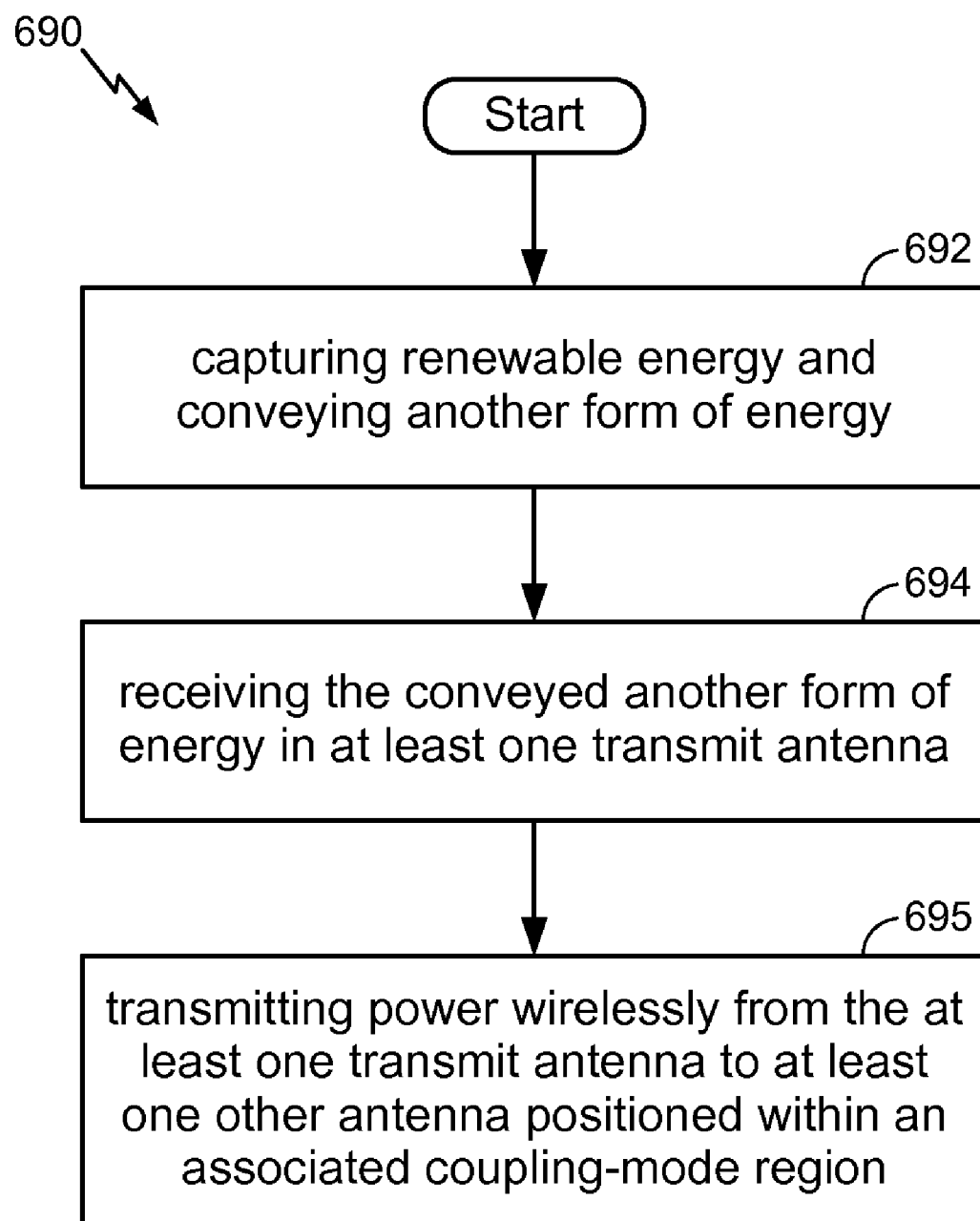
**FIG. 29**



**FIG. 30**



**FIG. 31**

**FIG. 32**

## WIRELESS POWER FROM RENEWABLE ENERGY

### CLAIM OF PRIORITY UNDER 35 U.S.C. §119

[0001] This application claims priority under 35 U.S.C. §119(e) to:

[0002] U.S. Provisional Patent Application 61/152,664 entitled “WIRELESS CHARGER POWERED USING SOLAR ENERGY” filed on Feb. 13, 2009, and assigned to the assignee hereof and hereby expressly incorporated by reference herein.

### BACKGROUND

#### [0003] 1. Field

[0004] The present invention relates generally to wireless charging, and more specifically to devices, systems, and methods related to wirelessly charging an electronic device.

#### [0005] 2. Background

[0006] Typically, each battery powered device requires its own charger and power source, which is usually an AC power outlet. This becomes unwieldy when many devices need charging.

[0007] Approaches are being developed that use over the air power transmission between a transmitter and the device to be charged. These generally fall into two categories. One is based on the coupling of plane wave radiation (also called far-field radiation) between a transmit antenna and receive antenna on the device to be charged which collects the radiated power and rectifies it for charging the battery. Antennas are generally of resonant length in order to improve the coupling efficiency. This approach suffers from the fact that the power coupling falls off quickly with distance between the antennas. So charging over reasonable distances (e.g., >1-2 m) becomes difficult. Additionally, since the system radiates plane waves, unintentional radiation can interfere with other systems if not properly controlled through filtering.

[0008] Other approaches are based on inductive coupling between a transmit antenna embedded, for example, in a “charging” mat or surface and a receive antenna plus rectifying circuit embedded in the host device to be charged. This approach has the disadvantage that the spacing between transmit and receive antennas must be very close (e.g. mms). Though this approach does have the capability to simultaneously charge multiple devices in the same area, this area is typically small, hence the user must locate the devices to a specific area. Therefore, there is a need to provide a wireless charging arrangement that accommodates flexible placement and orientation of transmit and receive antennas. Furthermore, it is desirable to have wireless power platforms configured to utilize sources of renewable energy to charge one or more electronic devices.

### BRIEF DESCRIPTION OF THE DRAWINGS

[0009] FIG. 1 shows a simplified block diagram of a wireless power transfer system.

[0010] FIG. 2 shows a simplified schematic diagram of a wireless power transfer system.

[0011] FIG. 3 shows a schematic diagram of a loop antenna for use in exemplary embodiments of the present invention.

[0012] FIG. 4 shows simulation results indicating coupling strength between transmit and receive antennas.

[0013] FIGS. 5A and 5B show layouts of loop antennas for transmit and receive antennas according to exemplary embodiments of the present invention.

[0014] FIG. 6 shows simulation results indicating coupling strength between transmit and receive antennas relative to various circumference sizes for the square and circular transmit antennas illustrated in FIGS. 5A and 5B.

[0015] FIG. 7 shows simulation results indicating coupling strength between transmit and receive antennas relative to various surface areas for the square and circular transmit antennas illustrated in FIGS. 5A and 5B.

[0016] FIG. 8 shows various placement points for a receive antenna relative to a transmit antenna to illustrate coupling strengths in coplanar and coaxial placements.

[0017] FIG. 9 shows simulation results indicating coupling strength for coaxial placement at various distances between the transmit and receive antennas.

[0018] FIG. 10 is a simplified block diagram of a transmitter, in accordance with an exemplary embodiment of the present invention.

[0019] FIG. 11 is a simplified block diagram of a receiver, in accordance with an exemplary embodiment of the present invention.

[0020] FIG. 12 shows a simplified schematic of a portion of transmit circuitry for carrying out messaging between a transmitter and a receiver.

[0021] FIGS. 13A-13C shows a simplified schematic of a portion of receive circuitry in various states to illustrate messaging between a receiver and a transmitter.

[0022] FIGS. 14A-14C shows a simplified schematic of a portion of alternative receive circuitry in various states to illustrate messaging between a receiver and a transmitter.

[0023] FIGS. 15A-15D are simplified block diagrams illustrating a beacon power mode for transmitting power between a transmitter and a receiver.

[0024] FIG. 16A illustrates a large transmit antenna with a three different smaller repeater antennas disposed coplanar with, and within a perimeter of, the transmit antenna.

[0025] FIG. 16B illustrates a large transmit antenna with smaller repeater antennas with offset coaxial placements and offset coplanar placements relative to the transmit antenna.

[0026] FIG. 17 shows simulation results indicating coupling strength between a transmit antenna, a repeater antenna and a receive antenna.

[0027] FIG. 18A shows simulation results indicating coupling strength between a transmit antenna and receive antenna with no repeater antennas.

[0028] FIG. 18B shows simulation results indicating coupling strength between a transmit antenna and receive antenna with a repeater antenna.

[0029] FIG. 19 is a simplified block diagram of a transmitter according to one or more exemplary embodiments of the present invention.

[0030] FIG. 20 is a simplified block diagram of an enlarged area wireless charging apparatus, in accordance with an exemplary embodiment of the present invention.

[0031] FIG. 21 is a simplified block diagram of an enlarged area wireless charging apparatus, in accordance with another exemplary embodiment of the present invention.

[0032] FIG. 22 is a block diagram of a charging system including a power generation system coupled to at least one transmit antenna with a barrier positioned therebetween, according to an exemplary embodiment of the present invention.

[0033] FIG. 23 is another block diagram of a charging system including a power generation system coupled to at least one transmit antenna with a barrier positioned therebetween, in accordance with an exemplary embodiment of the present invention.

[0034] FIG. 24 is yet another block diagram of a charging system including a power generation system coupled to at least one transmit antenna with a barrier positioned therebetween, according to an exemplary embodiment of the present invention.

[0035] FIG. 25 is a block diagram of a charging system including a power generation system coupled to at least one transmit positioned proximate a barrier, in accordance with an exemplary embodiment of the present invention.

[0036] FIG. 26 is another block diagram of a charging system including a power generation system coupled to at least one transmit positioned proximate a barrier, in accordance with an exemplary embodiment of the present invention.

[0037] FIG. 27 is yet another block diagram of a charging system including a power generation system coupled to at least one transmit positioned proximate a barrier, in accordance with an exemplary embodiment of the present invention.

[0038] FIG. 28 illustrates an example of a charging system including a solar cell attached to a top outer surface of a bus, in accordance with an exemplary embodiment of the present invention.

[0039] FIG. 29 illustrates another example of a charging system including a solar cell attached to a top outer surface of a train, according to an exemplary embodiment of the present invention.

[0040] FIG. 30 illustrates yet another example of a charging system including a solar cell attached to a top outer surface of a building, in accordance with an exemplary embodiment of the present invention.

[0041] FIG. 31 is a flowchart illustrating a method of operating a charging system, in accordance with an exemplary embodiment of the present invention.

[0042] FIG. 32 is a flowchart illustrating another method of operating a charging system, according to an exemplary embodiment of the present invention.

#### DETAILED DESCRIPTION

[0043] The word “exemplary” is used herein to mean “serving as an example, instance, or illustration.” Any embodiment described herein as “exemplary” is not necessarily to be construed as preferred or advantageous over other embodiments.

[0044] The detailed description set forth below in connection with the appended drawings is intended as a description of exemplary embodiments of the present invention and is not intended to represent the only embodiments in which the present invention can be practiced. The term “exemplary” used throughout this description means “serving as an example, instance, or illustration,” and should not necessarily be construed as preferred or advantageous over other exemplary embodiments. The detailed description includes specific details for the purpose of providing a thorough understanding of the exemplary embodiments of the invention. It will be apparent to those skilled in the art that the exemplary embodiments of the invention may be practiced without these specific details. In some instances, well-known structures and

devices are shown in block diagram form in order to avoid obscuring the novelty of the exemplary embodiments presented herein.

[0045] The words “wireless power” is used herein to mean any form of energy associated with electric fields, magnetic fields, electromagnetic fields, or otherwise that is transmitted between from a transmitter to a receiver without the use of physical electromagnetic conductors.

[0046] FIG. 1 illustrates wireless transmission or charging system 100, in accordance with various exemplary embodiments of the present invention. Input power 102 is provided to a transmitter 104 for generating a radiated field 106 for providing energy transfer. A receiver 108 couples to the radiated field 106 and generates an output power 110 for storing or consumption by a device (not shown) coupled to the output power 110. Both the transmitter 104 and the receiver 108 are separated by a distance 112. In one exemplary embodiment, transmitter 104 and receiver 108 are configured according to a mutual resonant relationship and when the resonant frequency of receiver 108 and the resonant frequency of transmitter 104 are exactly identical, transmission losses between the transmitter 104 and the receiver 108 are minimal when the receiver 108 is located in the “near-field” of the radiated field 106.

[0047] Transmitter 104 further includes a transmit antenna 114 for providing a means for energy transmission and receiver 108 further includes a receive antenna 118 for providing a means for energy reception. The transmit and receive antennas are sized according to applications and devices to be associated therewith. As stated, an efficient energy transfer occurs by coupling a large portion of the energy in the near-field of the transmitting antenna to a receiving antenna rather than propagating most of the energy in an electromagnetic wave to the far field. When in this near-field a coupling mode may be developed between the transmit antenna 114 and the receive antenna 118. The area around the antennas 114 and 118 where this near-field coupling may occur is referred to herein as a coupling-mode region.

[0048] FIG. 2 shows a simplified schematic diagram of a wireless power transfer system. The transmitter 104 includes an oscillator 122, a power amplifier 124 and a filter and matching circuit 126. The oscillator is configured to generate at a desired frequency, which may be adjusted in response to adjustment signal 123. The oscillator signal may be amplified by the power amplifier 124 with an amplification amount responsive to control signal 125. The filter and matching circuit 126 may be included to filter out harmonics or other unwanted frequencies and match the impedance of the transmitter 104 to the transmit antenna 114.

[0049] The receiver may include a matching circuit 132 and a rectifier and switching circuit to generate a DC power output to charge a battery 136 as shown in FIG. 2 or power a device coupled to the receiver (not shown). The matching circuit 132 may be included to match the impedance of the receiver 108 to the receive antenna 118.

[0050] As illustrated in FIG. 3, antennas used in exemplary embodiments may be configured as a “loop” antenna 150, which may also be referred to herein as a “magnetic” antenna. Loop antennas may be configured to include an air core or a physical core such as a ferrite core. Air core loop antennas may be more tolerable to extraneous physical devices placed in the vicinity of the core. Furthermore, an air core loop antenna allows the placement of other components within the core area. In addition, an air core loop may more readily

enable placement of the receive antenna **118** (FIG. 2) within a plane of the transmit antenna **114** (FIG. 2) where the coupled-mode region of the transmit antenna **114** (FIG. 2) may be more powerful.

**[0051]** As stated, efficient transfer of energy between the transmitter **104** and receiver **108** occurs during matched or nearly matched resonance between the transmitter **104** and the receiver **108**. However, even when resonance between the transmitter **104** and receiver **108** are not matched, energy may be transferred at a lower efficiency. Transfer of energy occurs by coupling energy from the near-field of the transmitting antenna to the receiving antenna residing in the neighborhood where this near-field is established rather than propagating the energy from the transmitting antenna into free space.

**[0052]** The resonant frequency of the loop or magnetic antennas is based on the inductance and capacitance. Inductance in a loop antenna is generally simply the inductance created by the loop, whereas, capacitance is generally added to the loop antenna's inductance to create a resonant structure at a desired resonant frequency. As a non-limiting example, capacitor **152** and capacitor **154** may be added to the antenna to create a resonant circuit that generates resonant signal **156**. Accordingly, for larger diameter loop antennas, the size of capacitance needed to induce resonance decreases as the diameter or inductance of the loop increases. Furthermore, as the diameter of the loop or magnetic antenna increases, the efficient energy transfer area of the near-field increases. Of course, other resonant circuits are possible. As another non-limiting example, a capacitor may be placed in parallel between the two terminals of the loop antenna. In addition, those of ordinary skill in the art will recognize that for transmit antennas the resonant signal **156** may be an input to the loop antenna **150**.

**[0053]** Exemplary embodiments of the invention include coupling power between two antennas that are in the near-fields of each other. As stated, the near-field is an area around the antenna in which electromagnetic fields exist but may not propagate or radiate away from the antenna. They are typically confined to a volume that is near the physical volume of the antenna. In the exemplary embodiments of the invention, magnetic type antennas such as single and multi-turn loop antennas are used for both transmit (Tx) and receive (Rx) antenna systems since magnetic near-field amplitudes tend to be higher for magnetic type antennas in comparison to the electric near-fields of an electric-type antenna (e.g., a small dipole). This allows for potentially higher coupling between the pair. Furthermore, "electric" antennas (e.g., dipoles and monopoles) or a combination of magnetic and electric antennas is also contemplated.

**[0054]** The Tx antenna can be operated at a frequency that is low enough and with an antenna size that is large enough to achieve good coupling (e.g.,  $>-4$  dB) to a small Rx antenna at significantly larger distances than allowed by far field and inductive approaches mentioned earlier. If the Tx antenna is sized correctly, high coupling levels (e.g.,  $-2$  to  $-4$  dB) can be achieved when the Rx antenna on a host device is placed within a coupling-mode region (i.e., in the near-field) of the driven Tx loop antenna.

**[0055]** FIG. 4 shows simulation results indicating coupling strength between transmit and receive antennas. Curves **170** and **172** indicate a measure of acceptance of power by the transmit and receive antennas, respectively. In other words, with a large negative number there is a very close impedance match and most of the power is accepted and, as a result,

radiated by the transmit antenna. Conversely, a small negative number indicates that much of the power is reflected back from the antenna because there is not a close impedance match at the given frequency. In FIG. 4, the transmit antenna and the receive antenna are tuned to have a resonant frequency of about 13.56 MHz.

**[0056]** Curve **170** illustrates the amount of power transmitted from the transmit antenna at various frequencies. Thus, at points **1a** and **3a**, corresponding to about 13.528 MHz and 13.593 MHz, much of the power is reflected and not transmitted out of the transmit antenna. However, at point **2a**, corresponding to about 13.56 MHz, it can be seen that a large amount of the power is accepted and transmitted out of the antenna.

**[0057]** Similarly, curve **172** illustrates the amount of power received by the receive antenna at various frequencies. Thus, at points **1b** and **3b**, corresponding to about 13.528 MHz and 13.593 MHz, much of the power is reflected and not conveyed through the receive antenna and into the receiver. However, at point **2b** corresponding to about 13.56 MHz, it can be seen that a large amount of the power is accepted by the receive antenna and conveyed into the receiver.

**[0058]** Curve **174** indicates the amount of power received at the receiver after being sent from the transmitter through the transmit antenna, received through the receive antenna and conveyed to the receiver. Thus, at points **1c** and **3c**, corresponding to about 13.528 MHz and 13.593 MHz, much of the power sent out of the transmitter is not available at the receiver because (1) the transmit antenna rejects much of the power sent to it from the transmitter and (2) the coupling between the transmit antenna and the receive antenna is less efficient as the frequencies move away from the resonant frequency. However, at point **2c** corresponding to about 13.56 MHz, it can be seen that a large amount of the power sent from the transmitter is available at the receiver, indicating a high degree of coupling between the transmit antenna and the receive antenna.

**[0059]** FIGS. 5A and 5B show layouts of loop antennas for transmit and receive antennas according to exemplary embodiments of the present invention. Loop antennas may be configured in a number of different ways, with single loops or multiple loops at wide variety of sizes. In addition, the loops may be a number of different shapes, such as, for example only, circular, elliptical, square, and rectangular. FIG. 5A illustrates a large square loop transmit antenna **114S** and a small square loop receive antenna **118** placed in the same plane as the transmit antenna **114S** and near the center of the transmit antenna **114S**. FIG. 5B illustrates a large circular loop transmit antenna **114C** and a small square loop receive antenna **118'** placed in the same plane as the transmit antenna **114C** and near the center of the transmit antenna **114C**. The square loop transmit antenna **114S** has side lengths of "a" while the circular loop transmit antenna **114C** has a diameter of "d". For a square loop, it can be shown that there is an equivalent circular loop whose diameter may be defined as:  $\Phi_{eq} = 4a/\pi$ .

**[0060]** FIG. 6 shows simulation results indicating coupling strength between transmit and receive antennas relative to various circumferences for the square and circular transmit antennas illustrated in FIGS. 4A and 4B. Thus, curve **180** shows coupling strength between the circular loop transmit antennas **114C** and the receive antenna **118** at various circumference sizes for the circular loop transmit antenna **114C**. Similarly, curve **182** shows coupling strength between the

square loop transmit antennas **114S** and the receive antenna **118'** at various equivalent circumference sizes for the transmit loop transmit antenna **114S**.

[0061] FIG. 7 shows simulation results indicating coupling strength between transmit and receive antennas relative to various surface areas for the square and circular transmit antennas illustrated in FIGS. 5A and 5B. Thus, curve **190** shows coupling strength between the circular loop transmit antennas **114C** and the receive antenna **118** at various surface areas for the circular loop transmit antenna **114C**. Similarly, curve **192** shows coupling strength between the square loop transmit antennas **114S** and the receive antenna **118'** at various surface areas for the transmit loop transmit antenna **114S**.

[0062] FIG. 8 shows various placement points for a receive antenna relative to a transmit antenna to illustrate coupling strengths in coplanar and coaxial placements. "Coplanar," as used herein, means that the transmit antenna and receive antenna have planes that are substantially aligned (i.e., have surface normals pointing in substantially the same direction) and with no distance (or a small distance) between the planes of the transmit antenna and the receive antenna. "Coaxial," as used herein, means that the transmit antenna and receive antenna have planes that are substantially aligned (i.e., have surface normals pointing in substantially the same direction) and the distance between the two planes is not trivial and furthermore, the surface normal of the transmit antenna and the receive antenna lie substantially along the same vector, or the two normals are in echelon.

[0063] As examples, points **p1**, **p2**, **p3**, and **p7** are all coplanar placement points for a receive antenna relative to a transmit antenna. As another example, point **p5** and **p6** are coaxial placement points for a receive antenna relative to a transmit antenna. The table below shows coupling strength (**S21**) and coupling efficiency (expressed as a percentage of power transmitted from the transmit antenna that reached the receive antenna) at the various placement points (**p1**-**p7**) illustrated in FIG. 8.

TABLE 1

Position	Distance from plane (cm)	S21 efficiency (%)	Efficiency (TX DC power in to RX DC power out)
p1	0	46.8	28
p2	0	55.0	36
p3	0	57.5	35
p4	2.5	49.0	30
p5	17.5	24.5	15
p6	17.5	0.3	0.2
p7	0	5.9	3.4

[0064] As can be seen, the coplanar placement points **p1**, **p2**, and **p3**, all show relatively high coupling efficiencies. Placement point **p7** is also a coplanar placement point, but is outside of the transmit loop antenna. While placement point **p7** does not have a high coupling efficiency, it is clear that there is some coupling and the coupling-mode region extends beyond the perimeter of the transmit loop antenna.

[0065] Placement point **p5** is coaxial with the transmit antenna and shows substantial coupling efficiency. The coupling efficiency for placement point **p5** is not as high as the coupling efficiencies for the coplanar placement points. However, the coupling efficiency for placement point **p5** is high

enough that substantial power can be conveyed between the transmit antenna and a receive antenna in a coaxial placement.

[0066] Placement point **p4** is within the circumference of the transmit antenna but at a slight distance above the plane of the transmit antenna in a position that may be referred to as an offset coaxial placement (i.e., with surface normals in substantially the same direction but at different locations) or offset coplanar (i.e., with surface normals in substantially the same direction but with planes that are offset relative to each other). From the table it can be seen that with an offset distance of 2.5 cm, placement point **p4** still has relatively good coupling efficiency.

[0067] Placement point **p6** illustrates a placement point outside the circumference of the transmit antenna and at a substantial distance above the plane of the transmit antenna. As can be seen from the table, placement point **p7** shows little coupling efficiency between the transmit and receive antennas.

[0068] FIG. 9 shows simulation results indicating coupling strength for coaxial placement at various distances between the transmit and receive antennas. The simulations for FIG. 9 are for square transmit and receive antennas in a coaxial placement, both with sides of about 1.2 meters and at a transmit frequency of 10 MHz. It can be seen that the coupling strength remains quite high and uniform at distances of less than about 0.5 meters.

[0069] FIG. 10 is a simplified block diagram of a transmitter, in accordance with an exemplary embodiment of the present invention. A transmitter **200** includes transmit circuitry **202** and a transmit antenna **204**. Generally, transmit circuitry **202** provides RF power to the transmit antenna **204** by providing an oscillating signal resulting in generation of near-field energy about the transmit antenna **204**. By way of example, transmitter **200** may operate at the 13.56 MHz ISM band.

[0070] Exemplary transmit circuitry **202** includes a fixed impedance matching circuit **206** for matching the impedance of the transmit circuitry **202** (e.g., 50 ohms) to the transmit antenna **204** and a low pass filter (LPF) **208** configured to reduce harmonic emissions to levels to prevent self-jamming of devices coupled to receivers **108** (FIG. 1). Other exemplary embodiments may include different filter topologies, including but not limited to, notch filters that attenuate specific frequencies while passing others and may include an adaptive impedance match, that can be varied based on measurable transmit metrics, such as output power to the antenna or DC current draw by the power amplifier. Transmit circuitry **202** further includes a power amplifier **210** configured to drive an RF signal as determined by an oscillator **212**. The transmit circuitry may be comprised of discrete devices or circuits, or alternately, may be comprised of an integrated assembly. An exemplary RF power output from transmit antenna **204** may be on the order of 2.5 Watts.

[0071] Transmit circuitry **202** further includes a processor **214** for enabling the oscillator **212** during transmit phases (or duty cycles) for specific receivers, for adjusting the frequency of the oscillator, and for adjusting the output power level for implementing a communication protocol for interacting with neighboring devices through their attached receivers.

[0072] The transmit circuitry **202** may further include a load sensing circuit **216** for detecting the presence or absence of active receivers in the vicinity of the near-field generated by transmit antenna **204**. By way of example, a load sensing

circuit 216 monitors the current flowing to the power amplifier 210, which is affected by the presence or absence of active receivers in the vicinity of the near-field generated by transmit antenna 204. Detection of changes to the loading on the power amplifier 210 are monitored by processor 214 for use in determining whether to enable the oscillator 212 for transmitting energy to communicate with an active receiver.

[0073] Transmit antenna 204 may be implemented as an antenna strip with the thickness, width and metal type selected to keep resistive losses low. In a conventional implementation, the transmit antenna 204 can generally be configured for association with a larger structure such as a table, mat, lamp or other less portable configuration. Accordingly, the transmit antenna 204 generally will not need “turns” in order to be of a practical dimension. An exemplary implementation of a transmit antenna 204 may be “electrically small” (i.e., fraction of the wavelength) and tuned to resonate at lower usable frequencies by using capacitors to define the resonant frequency. In an exemplary application where the transmit antenna 204 may be larger in diameter, or length of side if a square loop, (e.g., 0.50 meters) relative to the receive antenna, the transmit antenna 204 will not necessarily need a large number of turns to obtain a reasonable capacitance.

[0074] FIG. 11 is a block diagram of a receiver, in accordance with an exemplary embodiment of the present invention. A receiver 300 includes receive circuitry 302 and a receive antenna 304. Receiver 300 further couples to device 350 for providing received power thereto. It should be noted that receiver 300 is illustrated as being external to device 350 but may be integrated into device 350. Generally, energy is propagated wirelessly to receive antenna 304 and then coupled through receive circuitry 302 to device 350.

[0075] Receive antenna 304 is tuned to resonate at the same frequency, or near the same frequency, as transmit antenna 204 (FIG. 10). Receive antenna 304 may be similarly dimensioned with transmit antenna 204 or may be differently sized based upon the dimensions of an associated device 350. By way of example, device 350 may be a portable electronic device having diametric or length dimension smaller than the diameter or length of transmit antenna 204. In such an example, receive antenna 304 may be implemented as a multi-turn antenna in order to reduce the capacitance value of a tuning capacitor (not shown) and increase the receive antenna's impedance. By way of example, receive antenna 304 may be placed around the substantial circumference of device 350 in order to maximize the antenna diameter and reduce the number of loop turns (i.e., windings) of the receive antenna and the inter-winding capacitance.

[0076] Receive circuitry 302 provides an impedance match to the receive antenna 304. Receive circuitry 302 includes power conversion circuitry 306 for converting a received RF energy source into charging power for use by device 350. Power conversion circuitry 306 includes an RF-to-DC converter 308 and may also include a DC-to-DC converter 310. RF-to-DC converter 308 rectifies the RF energy signal received at receive antenna 304 into a non-alternating power while DC-to-DC converter 310 converts the rectified RF energy signal into an energy potential (e.g., voltage) that is compatible with device 350. Various RF-to-DC converters are contemplated including partial and full rectifiers, regulators, bridges, doublers, as well as linear and switching converters.

[0077] Receive circuitry 302 may further include switching circuitry 312 for connecting receive antenna 304 to the power conversion circuitry 306 or alternatively for disconnecting the

power conversion circuitry 306. Disconnecting receive antenna 304 from power conversion circuitry 306 not only suspends charging of device 350, but also changes the “load” as “seen” by the transmitter 200 (FIG. 2) as is explained more fully below. As disclosed above, transmitter 200 includes load sensing circuit 216 which detects fluctuations in the bias current provided to transmitter power amplifier 210. Accordingly, transmitter 200 has a mechanism for determining when receivers are present in the transmitter's near-field.

[0078] When multiple receivers 300 are present in a transmitter's near-field, it may be desirable to time-multiplex the loading and unloading of one or more receivers to enable other receivers to more efficiently couple to the transmitter. A receiver may also be cloaked in order to eliminate coupling to other nearby receivers or to reduce loading on nearby transmitters. This “unloading” of a receiver is also known herein as a “cloaking” Furthermore, this switching between unloading and loading controlled by receiver 300 and detected by transmitter 200 provides a communication mechanism from receiver 300 to transmitter 200 as is explained more fully below. Additionally, a protocol can be associated with the switching which enables the sending of a message from receiver 300 to transmitter 200. By way of example, a switching speed may be on the order of 100  $\mu$ sec.

[0079] In an exemplary embodiment, communication between the transmitter and the receiver refers to a Device Sensing and Charging Control Mechanism, rather than conventional two-way communication. In other words, the transmitter uses on/off keying of the transmitted signal to adjust whether energy is available in the near-field. The receivers interpret these changes in energy as a message from the transmitter. From the receiver side, the receiver uses tuning and de-tuning of the receive antenna to adjust how much power is being accepted from the near-field. The transmitter can detect this difference in power used from the near-field and interpret these changes as a message from the receiver.

[0080] Receive circuitry 302 may further include signaling detector and beacon circuitry 314 used to identify received energy fluctuations, which may correspond to informational signaling from the transmitter to the receiver. Furthermore, signaling and beacon circuitry 314 may also be used to detect the transmission of a reduced RF signal energy (i.e., a beacon signal) and to rectify the reduced RF signal energy into a nominal power for awakening either un-powered or power-depleted circuits within receive circuitry 302 in order to configure receive circuitry 302 for wireless charging.

[0081] Receive circuitry 302 further includes processor 316 for coordinating the processes of receiver 300 described herein including the control of switching circuitry 312 described herein. Cloaking of receiver 300 may also occur upon the occurrence of other events including detection of an external wired charging source (e.g., wall/USB power) providing charging power to device 350. Processor 316, in addition to controlling the cloaking of the receiver, may also monitor beacon circuitry 314 to determine a beacon state and extract messages sent from the transmitter. Processor 316 may also adjust DC-to-DC converter 310 for improved performance.

[0082] FIG. 12 shows a simplified schematic of a portion of transmit circuitry for carrying out messaging between a transmitter and a receiver. In some exemplary embodiments of the present invention, a means for communication may be enabled between the transmitter and the receiver. In FIG. 12 a power amplifier 210 drives the transmit antenna 204 to gen-

erate the radiated field. The power amplifier is driven by a carrier signal 220 that is oscillating at a desired frequency for the transmit antenna 204. A transmit modulation signal 224 is used to control the output of the power amplifier 210.

[0083] The transmit circuitry can send signals to receivers by using an ON/OFF keying process on the power amplifier 210. In other words, when the transmit modulation signal 224 is asserted, the power amplifier 210 will drive the frequency of the carrier signal 220 out on the transmit antenna 204. When the transmit modulation signal 224 is negated, the power amplifier will not drive out any frequency on the transmit antenna 204.

[0084] The transmit circuitry of FIG. 12 also includes a load sensing circuit 216 that supplies power to the power amplifier 210 and generates a receive signal 235 output. In the load sensing circuit 216 a voltage drop across resistor  $R_s$  develops between the power in signal 226 and the power supply 228 to the power amplifier 210. Any change in the power consumed by the power amplifier 210 will cause a change in the voltage drop that will be amplified by differential amplifier 230. When the transmit antenna is in coupled mode with a receive antenna in a receiver (not shown in FIG. 12) the amount of current drawn by the power amplifier 210 will change. In other words, if no coupled mode resonance exist for the transmit antenna 210, the power required to drive the radiated field will be first amount. If a coupled mode resonance exists, the amount of power consumed by the power amplifier 210 will go up because much of the power is being coupled into the receive antenna. Thus, the receive signal 235 can indicate the presence of a receive antenna coupled to the transmit antenna 235 and can also detect signals sent from the receive antenna, as explained below. Additionally, a change in receiver current draw will be observable in the transmitter's power amplifier current draw, and this change can be used to detect signals from the receive antennas, as explained below.

[0085] FIGS. 13A-13C shows a simplified schematic of a portion of receive circuitry in various states to illustrate messaging between a receiver and a transmitter. All of FIGS. 13A-13C show the same circuit elements with the difference being state of the various switches. A receive antenna 304 includes a characteristic inductance L1, which drives node 350. Node 350 is selectively coupled to ground through switch S1A. Node 350 is also selectively coupled to diode D1 and rectifier 318 through switch S1B. The rectifier 318 supplies a DC power signal 322 to a receive device (not shown) to power the receive device, charge a battery, or a combination thereof. The diode D1 is coupled to a transmit signal 320 which is filtered to remove harmonics and unwanted frequencies with capacitor C3 and resistor R1. Thus the combination of D1, C3, and R1 can generate a signal on the transmit signal 320 that mimics the transmit modulation generated by the transmit modulation signal 224 discussed above with reference to the transmitter in FIG. 12.

[0086] Exemplary embodiments of the invention includes modulation of the receive device's current draw and modulation of the receive antenna's impedance to accomplish reverse link signaling. With reference to both FIG. 13A and FIG. 12, as the power draw of the receive device changes, the load sensing circuit 216 detects the resulting power changes on the transmit antenna and from these changes can generate the receive signal 235.

[0087] In the exemplary embodiments of FIGS. 13A-13C, the current draw through the transmitter can be changed by

modifying the state of switches S1A and S2A. In FIG. 13A, switch S1A and switch S2A are both open creating a "DC open state" and essentially removing the load from the transmit antenna 204. This reduces the current seen by the transmitter.

[0088] In FIG. 13B, switch S1A is closed and switch S2A is open creating a "DC short state" for the receive antenna 304. Thus the state in FIG. 13B can be used to increase the current seen in the transmitter.

[0089] In FIG. 13C, switch S1A is open and switch S2A is closed creating a normal receive mode (also referred to herein as a "DC operating state") wherein power can be supplied by the DC out signal 322 and a transmit signal 320 can be detected. In the state shown in FIG. 13C the receiver receives a normal amount of power, thus consuming more or less power from the transmit antenna than the DC open state or the DC short state.

[0090] Reverse link signaling may be accomplished by switching between the DC operating state (FIG. 13C) and the DC short state (FIG. 13B). Reverse link signaling also may be accomplished by switching between the DC operating state (FIG. 13C) and the DC open state (FIG. 13A).

[0091] FIGS. 14A-14C shows a simplified schematic of a portion of alternative receive circuitry in various states to illustrate messaging between a receiver and a transmitter.

[0092] All of FIGS. 14A-14C show the same circuit elements with the difference being state of the various switches. A receive antenna 304 includes a characteristic inductance L1, which drives node 350. Node 350 is selectively coupled to ground through capacitor C1 and switch S1B. Node 350 is also AC coupled to diode D1 and rectifier 318 through capacitor C2. The diode D1 is coupled to a transmit signal 320 which is filtered to remove harmonics and unwanted frequencies with capacitor C3 and resistor R1. Thus the combination of D1, C3, and R1 can generate a signal on the transmit signal 320 that mimics the transmit modulation generated by the transmit modulation signal 224 discussed above with reference to the transmitter in FIG. 12.

[0093] The rectifier 318 is connected to switch S2B, which is connected in series with resistor R2 and ground. The rectifier 318 also is connected to switch S3B. The other side of switch S3B supplies a DC power signal 322 to a receive device (not shown) to power the receive device, charge a battery, or a combination thereof.

[0094] In FIGS. 13A-13C the DC impedance of the receive antenna 304 is changed by selectively coupling the receive antenna to ground through switch S1B. In contrast, in the exemplary embodiments of FIGS. 14A-14C, the impedance of the antenna can be modified to generate the reverse link signaling by modifying the state of switches S1B, S2B, and S3B to change the AC impedance of the receive antenna 304. In FIGS. 14A-14C the resonant frequency of the receive antenna 304 may be tuned with capacitor C2. Thus, the AC impedance of the receive antenna 304 may be changed by selectively coupling the receive antenna 304 through capacitor C1 using switch S1B, essentially changing the resonance circuit to a different frequency that will be outside of a range that will optimally couple with the transmit antenna. If the resonance frequency of the receive antenna 304 is near the resonant frequency of the transmit antenna, and the receive antenna 304 is in the near-field of the transmit antenna, a coupling mode may develop wherein the receiver can draw significant power from the radiated field 106.



[0095] In FIG. 14A, switch S1B is closed, which de-tunes the antenna and creates an “AC cloaking state,” essentially “cloaking” the receive antenna 304 from detection by the transmit antenna 204 because the receive antenna does not resonate at the transmit antenna’s frequency. Since the receive antenna will not be in a coupled mode, the state of switches S2B and S3B are not particularly important to the present discussion.

[0096] In FIG. 14B, switch S1B is open, switch S2B is closed, and switch S3B is open, creating a “tuned dummy-load state” for the receive antenna 304. Because switch S1B is open, capacitor C1 does not contribute to the resonance circuit and the receive antenna 304 in combination with capacitor C2 will be in a resonance frequency that may match with the resonant frequency of the transmit antenna. The combination of switch S3B open and switch S2B closed creates a relatively high current dummy load for the rectifier, which will draw more power through the receive antenna 304, which can be sensed by the transmit antenna. In addition, the transmit signal 320 can be detected since the receive antenna is in a state to receive power from the transmit antenna.

[0097] In FIG. 14C, switch S1B is open, switch S2B is open, and switch S3B is closed, creating a “tuned operating state” for the receive antenna 304. Because switch S1B is open, capacitor C1 does not contribute to the resonance circuit and the receive antenna 304 in combination with capacitor C2 will be in a resonance frequency that may match with the resonant frequency of the transmit antenna. The combination of switch S2B open and switch S3B closed creates a normal operating state wherein power can be supplied by the DC out signal 322 and a transmit signal 320 can be detected.

[0098] Reverse link signaling may be accomplished by switching between the tuned operating state (FIG. 14C) and the AC cloaking state (FIG. 14A). Reverse link signaling also may be accomplished by switching between the tuned dummy-load state (FIG. 14B) and the AC cloaking state (FIG. 14A). Reverse link signaling also may be accomplished by switching between the tuned operating state (FIG. 14C) and the tuned dummy-load state (FIG. 14B) because there will be a difference in the amount of power consumed by the receiver, which can be detected by the load sensing circuit in the transmitter.

[0099] Of course, those of ordinary skill in the art will recognize that other combinations of switches S1B, S2B, and S3B may be used to create cloaking, generate reverse link signaling and supplying power to the receive device. In addition, the switches S1A and S1B may be added to the circuits of FIGS. 14A-14C to create other possible combinations for cloaking, reverse link signaling, and supplying power to the receive device.

[0100] Thus, when in a coupled mode signals may be sent from the transmitter to the receiver, as discussed above with reference to FIG. 12. In addition, when in a coupled mode signals may be sent from the receiver to the transmitter, as discussed above with reference to FIGS. 13A-13C and 14A-14C.

[0101] FIGS. 15A-15D are simplified block diagrams illustrating a beacon power mode for transmitting power between a transmitter and a one or more receivers. FIG. 15A illustrates a transmitter 520 having a low power “beacon” signal 525 when there are no receive devices in the beacon coupling-mode region 510. The beacon signal 525 may be, as a non-limiting example, such as in the range of ~10 to ~20 mW RF.

This signal may be adequate to provide initial power to a device to be charged when it is placed in the coupling-mode region.

[0102] FIG. 15B illustrates a receive device 530 placed within the beacon coupling-mode region 510 of the transmitter 520 transmitting the beacon signal 525. If the receive device 530 is on and develops a coupling with the transmitter it will generate a reverse link coupling 535, which is really just the receiver accepting power from the beacon signal 525. This additional power, may be sensed by the load sensing circuit 216 (FIG. 12) of the transmitter. As a result, the transmitter may go into a high power mode.

[0103] FIG. 15C illustrates the transmitter 520 generating a high power signal 525' resulting in a high power coupling-mode region 510'. As long as the receive device 530 is accepting power and, as a result, generating the reverse link coupling 535, the transmitter will remain in the high power state. While only one receive device 530 is illustrated, multiple receive devices 530 may be present in the coupling-mode region 510. If there are multiple receive device 530 they will share the amount of power transmitted by the transmitter based on how well each receive device 530 is coupled. For example, the coupling efficiency may be different for each receive device 530 depending on where the device is placed within the coupling-mode region 510 as was explained above with reference to FIGS. 8 and 9.

[0104] FIG. 15D illustrates the transmitter 520 generating the beacon signal 525 even when a receive device 530 is in the beacon coupling-mode region 510. This state may occur when the receive device 530 is shut off, or the device cloaks itself, perhaps because it does not need any more power.

[0105] The receiver and transmitter may communicate on a separate communication channel (e.g., Bluetooth, zigbee, etc). With a separate communication channel, the transmitter may determine when to switch between beacon mode and high power mode, or create multiple power levels, based on the number of receive devices in the coupling-mode region 510 and their respective power requirements.

[0106] Exemplary embodiments of the invention include enhancing the coupling between a relatively large transmit antenna and a small receive antenna in the near-field power transfer between two antennas through introduction of additional antennas into the system of coupled antennas that will act as repeaters and will enhance the flow of power from the transmitting antenna toward the receiving antenna.

[0107] In exemplary embodiments, one or more extra antennas are used that couple to the transmit antenna and receive antenna in the system. These extra antennas comprise repeater antennas, such as active or passive antennas. A passive antenna may include simply the antenna loop and a capacitive element for tuning a resonant frequency of the antenna. An active element may include, in addition to the antenna loop and one or more tuning capacitors, an amplifier for increasing the strength of a repeated near-field radiation.

[0108] The combination of the transmit antenna and the repeater antennas in the power transfer system may be optimized such that coupling of power to very small receive antennas is enhanced based on factors such as termination loads, tuning components, resonant frequencies, and placement of the repeater antennas relative to the transmit antenna.

[0109] A single transmit antenna exhibits a finite near-field coupling mode region. Accordingly, a user of a device charging through a receiver in the transmit antenna’s near-field coupling mode region may require a considerable user access

space that would be prohibitive or at least inconvenient. Furthermore, the coupling mode region may diminish quickly as a receive antenna moves away from the transmit antenna.

[0110] A repeater antenna may refocus and reshape a coupling mode region from a transmit antenna to create a second coupling mode region around the repeater antenna, which may be better suited for coupling energy to a receive antenna. Discussed below in FIGS. 16A-18B are some non-limiting examples of embodiments including repeater antennas.

[0111] FIG. 16A illustrates a large transmit antenna 610C with three smaller repeater antennas 620C disposed coplanar with, and within a perimeter of, the transmit antenna 610C. The transmit antenna 610C and repeater antennas 620C are formed on a table 640. Various devices including receive antennas 630C are placed at various locations within the transmit antenna 610C and repeater antennas 620C. The exemplary embodiment of FIG. 16A may be able to refocus the coupling mode region generated by the transmit antenna 610C into smaller and stronger repeated coupling mode regions around each of the repeater antennas 620C. As a result, a relatively strong repeated near-field radiation is available for the receive antennas 630C. Some of the receive antennas are placed outside of any repeater antennas 620C. Recall that the coupled mode region may extend somewhat outside the perimeter of an antenna. Therefore, receive antennas 630C may be able to receive power from the near-field radiation of the transmit antenna 610C as well as any nearby repeater antennas 620C. As a result, receive antennas placed outside of any repeater antennas 620C, may be still be able to receive power from the near-field radiation of the transmit antenna 610C as well as any nearby repeater antennas 620C.

[0112] FIG. 16B illustrates a large transmit antenna 610D with smaller repeater antennas 620D with offset coaxial placements and offset coplanar placements relative to the transmit antenna 610D. A device including a receive antenna 630D is placed within the perimeter of one of the repeater antennas 620D. As a non-limiting example, the transmit antenna 610D may be disposed on a ceiling 646, while the repeater antennas 620D may be disposed on a table 640. The repeater antennas 620D in an offset coaxial placement may be able to reshape and enhance the near-field radiation from the transmitter antenna 610D to repeated near-field radiation around the repeater antennas 620D. As a result, a relatively strong repeated near-field radiation is available for the receive antenna 630D placed coplanar with the repeater antennas 620D.

[0113] FIG. 17 shows simulation results indicating coupling strength between a transmit antenna, a repeater antenna and a receive antenna. The transmit antenna, the repeater antenna, and the receive antenna are tuned to have a resonant frequency of about 13.56 MHz.

[0114] Curve 662 illustrates a measure for the amount of power transmitted from the transmit antenna out of the total power fed to the transmit antenna at various frequencies. Similarly, curve 664 illustrates a measure for the amount of power received by the receive antenna through the repeater antenna out of the total power available in the vicinity of its terminals at various frequencies. Finally, Curve 668 illustrates the amount of power actually coupled between the transmit antenna, through the repeater antenna and into the receive antenna at various frequencies.

[0115] At the peak of curve 668, corresponding to about 13.56 MHz, it can be seen that a large amount of the power sent from the transmitter is available at the receiver, indicat-

ing a high degree of coupling between the combination of the transmit antenna, the repeater antenna and the receive antenna.

[0116] FIG. 18A show simulation results indicating coupling strength between a transmit antenna and receive antenna disposed in a coaxial placement relative to the transmit antenna with no repeater antennas. The transmit antenna and the receive antenna are tuned to have a resonant frequency of about 10 MHz. The transmit antenna in this simulation is about 1.3 meters on a side and the receive antenna is a multi-loop antenna at about 30 mm on a side. The receive antenna is placed at about 2 meters away from the plane of the transmit antenna. Curve 682A illustrates a measure for the amount of power transmitted from the transmit antenna out of the total power fed to its terminals at various frequencies. Similarly, curve 684A illustrates a measure of the amount of power received by the receive antenna out of the total power available in the vicinity of its terminals at various frequencies. Finally, Curve 686A illustrates the amount of power actually coupled between the transmit antenna and the receive antenna at various frequencies.

[0117] FIG. 18B show simulation results indicating coupling strength between the transmit and receive antennas of FIG. 18A when a repeater antenna is included in the system. The transmit antenna and receive antenna are the same size and placement as in FIG. 18A. The repeater antenna is about 28 cm on a side and placed coplanar with the receive antenna (i.e., about 0.1 meters away from the plane of the transmit antenna). In FIG. 18B, Curve 682B illustrates a measure of the amount of power transmitted from the transmit antenna out of the total power fed to its terminals at various frequencies. Curve 684B illustrates the amount of power received by the receive antenna through the repeater antenna out of the total power available in the vicinity of its terminals at various frequencies. Finally, Curve 686B illustrates the amount of power actually coupled between the transmit antenna, through the repeater antenna and into the receive antenna at various frequencies.

[0118] When comparing the coupled power (686A and 686B) from FIGS. 18A and 18B it can be seen that without a repeater antenna the coupled power 686A peaks at about -36 dB. Whereas, with a repeater antenna the coupled power 686B peaks at about -5 dB. Thus, near the resonant frequency, there is a significant increase in the amount of power available to the receive antenna due to the inclusion of a repeater antenna.

[0119] Exemplary embodiments of the invention include low cost unobtrusive ways to properly manage how the transmitter radiates to single and multiple devices and device types in order to optimize the efficiency by which the transmitter conveys charging power to the individual devices.

[0120] FIG. 19 is a simplified block diagram of a transmitter 200 including a presence detector 280. The transmitter is similar to that of FIG. 10 and, therefore, does not need to be explained again. However, in FIG. 19 the transmitter 200 may include presence detector 280, and enclosed detector 290, or a combination thereof, connected to the controller 214 (also referred to as a processor herein). The controller 214 can adjust an amount of power delivered by the amplifier 210 in response to presence signals from the presence detector 280 and enclosed detector 290. The transmitter may receive power through an AC-DC converter (not shown) to convert conventional AC power 299.

[0121] As a non-limiting example, the presence detector **280** may be a motion detector utilized to sense the initial presence of a device to be charged that is inserted into the coverage area of the transmitter. After detection, the transmitter is turned on and the RF power received by the device is used to toggle a switch on the Rx device in a pre-determined manner, which in turn results in changes to the driving point impedance of the transmitter.

[0122] As another non-limiting example, the presence detector **280** may be a detector capable of detecting a human, for example, by infrared detection, motion detection, or other suitable means. In some exemplary embodiments, there may be regulations limiting the amount of power that a transmit antenna may transmit at a specific frequency. In some cases, these regulations are meant to protect humans from electromagnetic radiation. However, there may be environments where transmit antennas are placed in areas not occupied by humans, or occupied infrequently by humans, such as, for example, garages, factory floors, shops, and the like. If these environments are free from humans, it may be permissible to increase the power output of the transmit antennas above the normal power restrictions regulations. In other words, the controller **214** may adjust the power output of the transmit antenna **204** to a regulatory level or lower in response to human presence and adjust the power output of the transmit antenna **204** to a level above the regulatory level when a human is outside a regulatory distance from the electromagnetic field of the transmit antenna **204**.

[0123] In many of the examples below, only one guest device is shown being charged. In practice, a multiplicity of the devices can be charged from a near-field generated by each host.

[0124] In exemplary embodiments, a method by which the Tx circuit does not remain on indefinitely may be used. In this case, the Tx circuit may be programmed to shut off after a user-determined amount of time. This feature prevents the Tx circuit, notably the power amplifier, from running long after the wireless devices in its perimeter are fully charged. This event may be due to the failure of the circuit to detect the signal sent from either the repeater or the Rx coil that a device is fully charged. To prevent the Tx circuit from automatically shutting down if another device is placed in its perimeter, the Tx circuit automatic shut off feature may be activated only after a set period of lack of motion detected in its perimeter. The user may be able to determine the inactivity time interval, and change it as desired. As a non-limiting example, the time interval may be longer than that needed to fully charge a specific type of wireless device under the assumption of the device being initially fully discharged.

[0125] Exemplary embodiments of the invention include using surfaces as the charging stations or "hosts," housing totally, or partially, the transmit antenna and other circuitry necessary for wireless transfer of power to other often smaller devices, equipment, or machines referred to as "guests." As non-limiting examples, these charging stations or hosts could be a window, a wall, and so on. The charging system, which can be at least partially embedded in the aforementioned examples, may either be a retrofit to existing apparatus, or made as part of its initial design and manufacturing.

[0126] Electrically small antennas have low efficiency, often no more than a few percent as explained by the theory of small antennas. The smaller the electric size of an antenna, the lower is its efficiency. The wireless power transfer can become a viable technique replacing wired connection to the

electric grid in industrial, commercial, and household applications if power can be sent over meaningful distances to the devices that are in the receiving end of such power transfer system. While this distance is application dependent, a few tens of a centimeter to a few meters can be deemed a suitable range for most applications. Generally, this range reduces the effective frequency for the electric power in the interval between 5 MHz to 100 MHz.

[0127] FIGS. **20** and **21** are plan views of block diagrams of an enlarged area wireless charging apparatus, in accordance with exemplary embodiments. As stated, locating a receiver in a near-field coupling mode region of a transmitter for engaging the receiver in wireless charging may be unduly burdensome by requiring accurate positioning of the receiver in the transmit antenna's near-field coupling mode region. Furthermore, locating a receiver in the near-field coupling mode region of a fixed-location transmit antenna may also be inaccessible by a user of a device coupled to the receiver especially when multiple receivers are respectively coupled to multiple user accessible devices (e.g., laptops, PDAs, wireless devices) where users need concurrent physical access to the devices. For example, a single transmit antenna exhibits a finite near-field coupling mode region. Accordingly, a user of a device charging through a receiver in the transmit antenna's near-field coupling mode region may require a considerable user access space that would be prohibitive or at least inconvenient for another user of another device to also wirelessly charge within the same transmit antenna's near-field coupling mode region and also require separate user access space. For example, two adjacent users of wireless chargeable devices seated at a conference table configured with a single transmit antenna may be inconvenienced or prohibited from accessing their respective devices due to the local nature of the transmitters near-field coupling mode region and the considerable user access space required to interact with the respective devices. Additionally, requiring a specific wireless charging device and its user to be specifically located may also inconvenience a user of the device.

[0128] Referring to FIG. **20**, an exemplary embodiment of an enlarged area wireless charging apparatus **700** provides for placement of a plurality of adjacently located transmit antenna circuits **702A-702D** to define an enlarged wireless charging area **708**. By way of example and not limitation, a transmit antenna circuit includes a transmit antenna **710** having a diameter or side dimension, for example, of around 30-40 centimeters for providing uniform coupling to an receive antenna (not shown) that is associated with or fits in an electronic device (e.g., wireless device, handset, PDA, laptop, etc.). By considering the transmit antenna circuit **702** as a unit or cell of the enlarged area wireless charging apparatus **700**, stacking or adjacently tiling these transmit antenna circuits **702A-702D** next to each other on substantially a single planar surface **704** (e.g., on a table top) allows for increasing or enlarging the charging area. The enlarged wireless charging area **708** results in an increased charging region for one or more devices.

[0129] The enlarged area wireless charging apparatus **700** further includes a transmit power amplifier **720** for providing the driving signal to transmit antennas **710**. In configurations where the near-field coupling mode region of one transmit antenna **710** interferes with the near-field coupling mode regions of other transmit antennas **710**, the interfering adja-

cent transmit antennas **710** are “cloaked” to allow improved wireless charging efficiency of the activated transmit antenna **710**.

[0130] The sequencing of activation of transmit antennas **710** in enlarged area wireless charging apparatus **700** may occur according to a time-domain based sequence. The output of transmit power amplifier **720** is coupled to a multiplexer **722** which time-multiplexes, according to control signal **724** from the transmitter processor, the output signal from the transmit power amplifier **720** to each of the transmit antennas **710**.

[0131] In order to inhibit inducing resonance in adjacent inactive transmit antenna **710** when the power amplifier **720** is driving the active transmit antenna, the inactive antennas may be “cloaked” by altering the resonant frequency of that transmit antenna by, for example, activating the cloaking circuit **714**. By way of implementation, concurrent operation of directly or nearly adjacent transmit antenna circuits **702** may result in interfering effects between concurrently activated and physically nearby or adjacent other transmit antenna circuits **702**. Accordingly, transmit antenna circuit **702** may further include a transmitter cloaking circuit **714** for altering the resonant frequency of transmit antennas **710**.

[0132] The transmitter cloaking circuit may be configured as a switching means (e.g. a switch) for shorting-out or altering the value of reactive elements, for example capacitor **716**, of the transmit antenna **710**. The switching means may be controlled by control signals **721** from the transmitter's processor. In operation, one of the transmit antennas **710** is activated and allowed to resonate while other of transmit antennas **710** are inhibited from resonating, and therefore inhibited from adjacently interfering with the activated transmit antenna **710**. Accordingly, by shorting-out or altering the capacitance of a transmit antenna **710**, the resonant frequency of transmit antenna **710** is altered to prevent resonant coupling from other transmit antennas **710**. Other techniques for altering the resonant frequency are also contemplated.

[0133] In another exemplary embodiment, each of the transmit antenna circuits **702** can determine the presence or absence of receivers within their respective near-field coupling mode regions with the transmitter processor choosing to activate ones of the transmit antenna circuits **702** when receivers are present and ready for wireless charging or forego activating ones of the transmit antenna circuits **702** when receivers are not present or not ready for wireless charging in the respective near-field coupling mode regions. The detection of present or ready receivers may occur according to the receiver detection signaling protocol described herein or may occur according to physical sensing of receivers such as motion sensing, pressure sensing, image sensing or other sensing techniques for determining the presence of a receiver within a transmit antenna's near-field coupling mode region. Furthermore, preferential activation of one or more transmit antenna circuits by providing an enhanced proportional duty cycle to at least one of the plurality of antenna circuits is also contemplated to be within the scope of the present invention.

[0134] Referring to FIG. **21**, an exemplary embodiment of an enlarged area wireless charging apparatus **800** provides for placement of a plurality of adjacently located repeater antenna circuits **802A-802D** inside of a transmit antenna **801** defining an enlarged wireless charging area **808**. Transmit antenna **801**, when driven by transmit power amplifier **820**, induces resonant coupling to each of the repeater antennas **810A-810D**. By way of example and not limitation, a repeater

antenna **810** having a diameter or side dimension, for example, of around 30-40 centimeters provides uniform coupling to a receive antenna (not shown) that is associated with or affixed to an electronic device. By considering the repeater antenna circuit **802** as a unit or cell of the enlarged area wireless charging apparatus **800**, stacking or adjacently tiling these repeater antenna circuits **802A-802D** next to each other on substantially a single planar surface **804** (e.g., on a table top) allows for increasing or enlarging the charging area. The enlarged wireless charging area **808** results in an increased charging space for one or more devices.

[0135] The enlarged area wireless charging apparatus **800** includes transmit power amplifier **820** for providing the driving signal to transmit antenna **801**. In configurations where the near-field coupling mode region of one repeater antenna **810** interferes with the near-field coupling mode regions of other repeater antennas **810**, the interfering adjacent repeater antennas **810** are “cloaked” to allow improved wireless charging efficiency of the activated repeater antenna **810**.

[0136] The sequencing of activation of repeater antennas **810** in enlarged area wireless charging apparatus **800** may occur according to a time-domain based sequence. The output of transmit power amplifier **820** is generally constantly coupled (except during receiver signaling as described herein) to transmit antenna **801**. In the present exemplary embodiment, the repeater antennas **810** are time-multiplexed according to control signals **821** from the transmitter processor. By way of implementation, concurrent operation of directly or nearly adjacent repeater antenna circuits **802** may result in interfering effects between concurrently activated and physically nearby or adjacent other repeater antennas circuits **802**. Accordingly, repeater antenna circuit **802** may further include a repeater cloaking circuit **814** for altering the resonant frequency of repeater antennas **810**.

[0137] The repeater cloaking circuit may be configured as a switching means (e.g. a switch) for shorting-out or altering the value of reactive elements, for example capacitor **816**, of the repeater antenna **810**. The switching means may be controlled by control signals **821** from the transmitter's processor. In operation, one of the repeater antennas **810** is activated and allowed to resonate while other of repeater antennas **810** are inhibited from resonating, and therefore adjacently interfering with the activated repeater antenna **810**. Accordingly, by shorting-out or altering the capacitance of a repeater antenna **810**, the resonant frequency of repeater antenna **810** is altered to prevent resonant coupling from other repeater antennas **810**. Other techniques for altering the resonant frequency are also contemplated.

[0138] In another exemplary embodiment, each of the repeater antenna circuits **802** can determine the presence or absence of receivers within their respective near-field coupling mode regions with the transmitter processor choosing to activate ones of the repeater antenna circuits **802** when receivers are present and ready for wireless charging or forego activating ones of the repeater antenna circuits **802** when receivers are not present or not ready for wireless charging in the respective near-field coupling mode regions. The detection of present or ready receivers may occur according to the receiver detection signaling protocol described herein or may occur according to physical sensing of receivers such as motion sensing, pressure sensing, image sensing or other sensing techniques for determining a receiver to be within a repeater antenna's near-field coupling mode region.

[0139] The various exemplary embodiments of the enlarged area wireless charging apparatus 700 and 800 may further include time domain multiplexing of the input signal being coupled to transmit/repeater antennas 710, 810 based upon asymmetrically allocating activation time slots to the transmit/repeater antennas based upon factors such as priority charging of certain receivers, varying quantities of receivers in different antennas' near-field coupling mode regions, power requirements of specific devices coupled to the receivers as well as other factors.

[0140] It is known that electrically small antennas have low efficiency, often no more than a few percent as explained by the theory of small antennas, known by those of skill in the art. Generally, the smaller the electric size of an antenna, the lower is its efficiency. Accordingly, wireless power transfer can become a viable technique replacing wired connection to the electric grid in industrial, commercial, and household applications if power can be sent over meaningful distances to the devices that are in the receiving end of such power transfer system. While this distance is application dependent, a few tens of a centimeter to a few meters, for example, can be deemed a suitable range for most applications. Generally, this range reduces the effective frequency for the electric power in the interval, for example, between 5 MHz to 100 MHz.

[0141] As stated, efficient transfer of energy between the transmitter and receiver occurs during matched or nearly matched resonance between the transmitter and the receiver. However, even when resonance between the transmitter and receiver are not matched, energy may be transferred at a lower efficiency. Transfer of energy occurs by coupling energy from the near-field of the transmitting antenna to the receiving antenna residing in the neighborhood where this near-field is established rather than propagating the energy from the transmitting antenna into free space.

[0142] Exemplary embodiments of the invention include coupling power between two antennas that are in the near-fields of each other. As stated, the near-field is an area around the antenna in which electromagnetic fields exist but may not propagate or radiate away from the antenna. They are typically confined to a volume that is near the physical volume of the antenna. In the exemplary embodiments of the invention, magnetic type antennas such as single and multi-turn loop antennas are used for both transmit (Tx) and receive (Rx) antenna systems since magnetic near-field amplitudes tend to be higher for magnetic type antennas in comparison to the electric near-fields of an electric-type antenna (e.g., a small dipole). This allows for potentially higher coupling between the pair. Furthermore, "electric" antennas (e.g., dipoles and monopoles) or a combination of magnetic and electric antennas is also contemplated.

[0143] The Tx antenna can be operated at a frequency that is low enough and with an antenna size that is large enough to achieve good coupling (e.g.,  $>-4$  dB) to a small Rx antenna at significantly larger distances than allowed by far field and inductive approaches mentioned earlier. If the Tx antenna is sized correctly, high coupling levels (e.g.,  $-2$  to  $-4$  dB) can be achieved when the Rx antenna on a host device is placed within a coupling-mode region (i.e., in the near-field) of the driven Tx loop antenna.

[0144] FIGS. 20 and 21 illustrate multiple loops in a charging area that is substantially planar. However, exemplary embodiments of the present invention are not so limited. Three-dimensional spaces with multiple antennas may be used.

[0145] FIG. 22 is a block diagram of a charging system 400 including a power generation system 402 coupled to at least one transmit antenna 404, via transmit circuitry 202 (see FIG. 10), according to one or more exemplary embodiments of the present invention. Power generation system 402 may be positioned at an exterior or "outdoor" location with respect to barrier 408 and, as non-limiting examples, may comprise a solar cell, a wind turbine, a water turbine, or any other device configured to convert one form of energy (i.e., renewable energy) into another form of energy. Moreover, transmit antenna 404 may be positioned, for example, inside a building (e.g., a house or an office building), inside an automobile (e.g., a car or a bus), or inside a train. As more specific, non-limiting examples, and as described more fully below, transmit antenna 404 may be secured to an interior surface of a window, an interior surface of a wall, or a piece of furniture, such as a shelf or a table, positioned at an indoor location.

[0146] Additionally, charging system 400 may include a receive antenna 410 positioned coaxially with transmit antenna 404, coplanar with transmit antenna 404, positioned within a perimeter of transmit antenna 404, or any combination thereof. Furthermore, as illustrated in charging system 400' of FIG. 23, receive antenna 410 may be positioned coaxially with and outside of transmit antenna 404, coplanar with and outside of transmit antenna 404, or any combination thereof. In addition, as illustrated in charging system 400'' of FIG. 24, transmit antenna 404 may be positioned coaxially with receive antenna 410, coplanar with receive antenna 410, positioned within a perimeter of receive antenna 410, or any combination thereof.

[0147] Power generation system 402 may be coupled to transmit circuitry 202 (FIG. 10) and transmit antenna 404 via a wired connection 406 extending through barrier 408. Barrier 408 may comprise, for example only, a wall or a window. As will be understood by a person having ordinary skill in the art, power generation system 402 may be configured to capture renewable energy and convert the renewable energy to another form of energy. Moreover, power generation system 402 may be configured to convey energy, via wired connection 406, to transmit antenna 404 by way of associated transmit circuitry 202. Upon receipt of energy, transmit antenna 404 may be configured to wirelessly transmit power within an associated near-field.

[0148] Power wirelessly transmitted by transmit antenna 404 may be received by a receive antenna within an associated coupling mode-region. For example, power transmitted from transmit antenna 404 may be received by receive antenna 410 and a receiver (e.g., receiver 108 of FIG. 2) coupled to a battery (e.g., battery 136 of FIG. 2) of an associated chargeable device 412. Upon receipt of the transmitted power at receive antenna 410 and the receiver, power may be provided to chargeable device 412. As a non-limiting example, chargeable device 412 may comprise any known and suitable chargeable device such as, a cellular telephone, a portable media player, a camera, or any combination thereof. It is noted that transmit antenna 404 may be configured to simultaneously wirelessly transmit power to one or more receive antennas positioned within a near-field of transmit antenna 404. Further, according to one exemplary embodiment, transmit antenna 404 may be configured to wirelessly transmit power within its near-field only if at least one chargeable device is within the near-field and the at least one chargeable device is in need of a charge.

[0149] Although charging systems 400 only include one power generation system coupled to one transmit antenna, exemplary embodiments of the present invention are not so limited. For example, charging system 400 may include one power generation system coupled to a plurality of transmit antennas, a plurality of power generation systems coupled to one transmit antenna, or one or more power generation systems coupled to one or more transmit antennas.

[0150] FIG. 25 is a block diagram of another charging system 420 including power generation system 402 operably coupled to at least one transmit antenna 424, via transmit circuitry 202 (see FIG. 10), positioned proximate a barrier 418, according to one or more exemplary embodiments of the present invention. Power generation system 402, transmit circuitry 202, and transmit antenna 424 may each be positioned at an exterior or "outdoor" location with respect to barrier 418 and power generation system 402 may be coupled to transmit circuitry 202 and transmit antenna 424 via a wired connection 428. Furthermore, according to various exemplary embodiments of the present invention, transmit antenna 424 may be secured to an outer surface of barrier 418, which may comprise, for example only, a wall or a window. As described above, power generation system 402 may be configured to capture renewable energy and convert the renewable energy to another form of energy.

[0151] Charging system 420 may also include an antenna 426 positioned inside a building (e.g., a house or an office building), inside an automobile (e.g. a car or a bus), or inside a train. As more specific, non-limiting examples, and as described more fully below, antenna 426 may be secured to an interior surface of a window (e.g., a barrier 418), an interior surface of a wall (e.g., barrier 418), or a piece of furniture, such as a shelf or a table, positioned at an indoor location.

[0152] According to one exemplary embodiment of the present invention, antenna 426 may be configured as a repeater antenna and charging system 420 may include receive antenna 410 positioned coaxially with antenna 426, coplanar with antenna 426, positioned within a perimeter of antenna 426, or any combination thereof. Furthermore, as illustrated in charging system 420' of FIG. 26, receive antenna 410 may be positioned coaxially with and outside of antenna 426, coplanar with and outside of antenna 426, or any combination thereof. Furthermore, as illustrated in charging system 420" of FIG. 27, antenna 426 may be positioned coaxially with receive antenna 410, coplanar with receive antenna 410, positioned within a perimeter of receive antenna 410, or any combination thereof.

[0153] In this exemplary embodiment, power generation system 402 may be configured to transmit energy, by way of wired connection 428, to transmit antenna 424 via transmit circuitry 202 (see FIG. 10). Upon receipt of energy, transmit antenna 424 may be configured to wirelessly transmit power through barrier 418 and within an associated near-field. Further, power transmitted by transmit antenna 424 may be received by an antenna within an associated coupling mode-region. As an example, power wirelessly transmitted from transmit antenna 424 may be received by antenna 426 and, upon receipt of power, antenna 426 may, via associated circuitry, wirelessly transmit power with an associated near-field. Power transmitted by antenna 426 may be received by a receive antenna within an associated coupling mode-region. For example, power transmitted by antenna 426 may be received by receive antenna 410 and a receiver (e.g., receiver 108 of FIG. 2) coupled to a battery (e.g., battery 136 of FIG.

2) of associated chargeable device 412. Upon receipt of the transmitted power at receive antenna 410 and the receiver, power may be provided to chargeable device 412.

[0154] It is noted that transmit antenna 424 may be configured to simultaneously transmit power to one or more repeater antennas within respective near-fields. Additionally, antenna 426 may be configured to simultaneously transmit power to one or more receive antennas within respective near-fields. Further, according to one exemplary embodiment, antenna 426 may be configured to transmit power within its near-field only if at least one chargeable device is within the near-field and the at least one chargeable device is in need of a charge.

[0155] According to another exemplary embodiment of the present invention, antenna 426 may be configured as a receive antenna and may be coupled to a power distribution system (not shown) via a wired connection. For example only, the power distribution system may comprise a power distribution system implemented within a building or a vehicle. Accordingly, the power distribution system may comprise one or more electrical ports (e.g., a power outlet) configured for coupling to a power cord of a chargeable device. In this exemplary embodiment, power wirelessly transmitted from transmit antenna 424 may be received by antenna 426 and, upon receipt of power, antenna 426 may, via a wired connection, transmit power to the power distribution system. Furthermore, a chargeable device coupled to the power distribution system, via an electrical port and a power cord, may receive power from the power distribution system.

[0156] FIGS. 28-30 each illustrate exemplary implementations of one or more exemplary embodiments of the present invention, as described herein. With reference to FIG. 28, a charging system 450 includes a solar cell 452 attached to a top outer surface of a vehicle (e.g., car, bus, train) 454. Although solar cell 452 is illustrated as a single solar cell structure, solar cell 452 may comprise a plurality of solar cells. Charging system 450 further includes one or more transmit antennas 458, wherein each transmit antenna 458 may be secured to a barrier (e.g., window) of vehicle 454. In this example, charging system 450 may resemble charging system 400, as illustrated in FIGS. 22-24 and, therefore, each transmit antenna 458 may be positioned inside vehicle 454. As an example, each transmit antenna 458 may be secured to an inner surface of an associated window of bus 454. Furthermore, in this example, solar cell 452 may be coupled, by means of a wired connection 456 extending through one or more windows of vehicle 454, to each transmit antenna 458 via transmit circuitry 202 (see FIG. 10). Accordingly, a window of vehicle 454 may represent barrier 408, as described above with reference to FIGS. 22-24.

[0157] As will be understood by a person having ordinary skill in the art, solar cell 452 may be configured to capture solar power and convert the solar power to another form of energy. Moreover, solar cell 452 may be configured to transmit energy to transmit circuitry 202 and transmit antenna 458 via wired connection 456 and, upon receipt of energy, transmit antenna 458 may be configured to transmit power within an associated near-field. Power transmitted by transmit antenna 458 may be received by a receive antenna within an associated coupling mode-region. More specifically, for example, power transmitted from transmit antenna 458 may be received by a receive antenna and a receiver (e.g., receiver 108 of FIG. 2) coupled to a battery (e.g., battery 136 of FIG. 2) of an associated chargeable device positioned inside bus

**454** and within a near-field of transmit antenna **458**. Upon receipt of the transmitted power at the receive antenna and the receiver, power may be provided to the chargeable device.

**[0158]** FIG. 29 illustrates another charging system **466** including a solar cell **468** attached to a top outer surface of a vehicle (e.g., car, bus, train) **470**. Although solar cell **468** is illustrated as a single solar cell structure, solar cell **468** may comprise a plurality of solar cells. In this example, charging system **466** may resemble charging system **420**, as illustrated in FIGS. 25-27 and, therefore, each transmit antenna **478** may be positioned outside of vehicle **470**. As an example, each transmit antenna **478** may be secured to an outer surface of an associated window. Furthermore, in this example, solar cell **468** may be coupled, via a wired connection **476**, to transmit antenna **458** via transmit circuitry **202** (see FIG. 10). Accordingly, a window of vehicle **470** may represent barrier **418**, as described above with reference to FIGS. 25-27.

**[0159]** As will be understood by a person having ordinary skill in the art, solar cell **468** may be configured to capture solar power and convert the solar power to another form of energy. Moreover, solar cell **468** may be configured to transmit energy to transmit circuitry **202** and transmit antenna **478** via wired connection **476**. Upon receipt of energy, transmit antenna **478** may be configured to transmit power within an associated near-field. Power transmitted by transmit antenna **478** may be received by a repeater antenna (not shown) positioned inside vehicle **470** and within an associated coupling mode-region. More specifically, for example, power transmitted from transmit antenna **478** (e.g., a transmit antenna secured to an outer surface of an associated window) may be received by an associated repeater antenna (not shown) (e.g., a repeater antenna secured to an inner surface of an associated window). Upon receipt of power, the repeater antenna may, via associated circuitry, transmit power with an associated near-field. Power transmitted by the repeater antenna may be received by a receive antenna within an associated coupling mode-region. For example, power transmitted from the repeater antenna may be received by a receive antenna and an associated receiver (e.g., receiver **108** of FIG. 2) coupled to a battery (e.g., battery **136** of FIG. 2) of an associated chargeable device positioned inside vehicle **470** and within a near-field of the repeater antenna. Upon receipt of the transmitted power at the receive antenna and the receiver, power may be provided to the chargeable device.

**[0160]** Although FIG. 28 illustrates a charging system resembling charging system **400** (see FIGS. 23-25) implemented within a bus, and FIG. 30 illustrates a charging system resembling charging system **450** (see FIGS. 25-27) implemented within a train, charging system **400** may be similarly implemented within any vehicle (e.g., a train or a car) or building and charging system **450** may be similarly implemented within any vehicle (e.g., a bus or a car) or building.

**[0161]** FIG. 30 illustrates yet another example of a charging system **580** including a solar cell **582** attached to a top outer surface of a building **599**. Although building **599** is illustrated as a house, building **599** may comprise any suitable building, such as an office building, a library, or a school. Furthermore, although solar cell **582** is illustrated as a single solar cell structure, solar cell **582** may comprise a plurality of solar cells. Charging system **580** further includes a transmit antenna **584** attached to surface of building **599**. In one example implementing the exemplary embodiments of FIGS. 22-24, transmit antenna **584** may be positioned inside building **599**. Furthermore, in this example, solar cell **582** may be

coupled, via a wired connection **586** extending through a surface (e.g., a wall) of building **599**, to transmit antenna **584** via transmit circuitry **202** (see FIG. 10). Accordingly, in this example, a surface of building **599** represents barrier **408**, as described above with reference to FIGS. 22-24.

**[0162]** Solar cell **582** may be configured to transmit energy to transmit circuitry **202** and transmit antenna **584** via wired connection **586** and, upon receipt of energy, transmit antenna **584** may be configured to transmit power within an associated near-field. Power transmitted by transmit antenna **584** may be received by a receive antenna within an associated coupling mode-region. More specifically, for example, power transmitted from transmit antenna **584** may be received by a receive antenna and a receiver coupled to a battery of an associated chargeable device positioned inside of building **599** and within a near-field of transmit antenna **584**. Upon receipt of the transmitted power at the receive antenna and the receiver, power may be provided to the chargeable device.

**[0163]** In another separate example implementing the exemplary embodiments of FIGS. 25-27, transmit antenna **584** may be secured to an outer surface of building **599**. In this example, upon receipt of energy, transmit antenna **584** may be configured to wirelessly transmit power through a surface of building **599**. The transmitted power may then be received by a repeater antenna (not shown) positioned inside building **599** and within an associated coupling mode-region. More specifically, for example, power wirelessly transmitted from transmit antenna **584** (e.g., a transmit antenna secured to an outer surface of a window) through a surface of building **599** may be received by an associated repeater antenna (not shown) (e.g., a repeater antenna secured to an inner surface of the window). Upon receipt of power, the repeater antenna may, via associated circuitry, transmit power that may be received by a receive antenna within an associated coupling mode-region. For example, power transmitted from the repeater antenna may be received by a receive antenna and a receiver coupled to a battery of associated chargeable device (not shown) positioned inside building **599** and within a near-field of the repeater antenna. Upon receipt of the transmitted power at the receive antenna and the receiver, power may be provided to the chargeable device.

**[0164]** Charging system **580** may further include a turbine **588**, which may comprise, for example, a wind turbine or a water turbine. In one example implementing the exemplary embodiments of FIGS. 25-27, turbine **588** may be connected, via wire connection **596**, to transmit circuitry **202** (see FIG. 10) and a transmit antenna **592**, each positioned outside of building **599**. More specifically, transmit antenna **592** may be secured to an outer surface of a window **594**. Turbine **588** may be configured to convey energy to transmit circuitry **202** and transmit antenna **592** via wired connection **596** and, upon receipt of energy, transmit antenna **592** may be configured to wirelessly transmit power within an associated near-field. Power wirelessly transmitted by transmit antenna **592** may be received by a repeater antenna **590** positioned inside building **599** and within an associated coupling mode-region. For example, power wirelessly transmitted by transmit antenna **592** may be received by a repeater antenna **590** secured to an inner surface of window **594** and within an associated coupling mode-region. Upon receipt of power, repeater antenna **590** may, via associated circuitry, wirelessly transmit power with an associated near-field. Power transmitted by repeater antenna **590** may be received by a receive antenna within an associated coupling mode-region. For example, power wire-



lessly transmitted from repeater antenna 590 may be received by a receive antenna and a receiver coupled to a battery of associated chargeable device (not shown) positioned inside building 599 and within a near-field of repeater antenna 590. Upon receipt of the transmitted power at the receive antenna and the receiver, power may be provided to the chargeable device.

[0165] It is noted that although turbine 588 and building 599 are described as being implemented together according to the exemplary embodiments described above with reference to FIGS. 25-27, a system including a turbine and a building implemented together according to the exemplary embodiments described above with reference to FIGS. 22-24 is also within the scope of the present invention.

[0166] FIG. 31 is a flowchart illustrating a method 600 of operating a charging system, in accordance with one or more exemplary embodiments. Method 600 may include converting renewable energy to another form of energy (depicted by numeral 602). Method 600 may further include conveying the another form of energy to at least one transmit antenna (depicted by numeral 604). Additionally, method 600 may include wirelessly transmitting energy from the at least one transmit antenna to at least one other antenna positioned within a near-field of the at least one transmit antenna (depicted by numeral 605).

[0167] FIG. 32 is a flowchart illustrating another method 690 of operating a charging system, according to one or more exemplary embodiments. Method 690 may include capturing renewable energy and conveying another form of energy (depicted by numeral 692). Furthermore, method 690 may include receiving the conveyed another form of energy in at least one transmit antenna (depicted by numeral 694). Method 690 may further include transmitting power wirelessly from the at least one transmit antenna to at least one other antenna positioned within an associated coupling-mode region (depicted by numeral 695).

[0168] Various exemplary embodiments of the present invention as described herein may enable one or more wireless chargers to operate independently of a power system of a device (e.g., a car, a train, or a bus) or a building (e.g., a house, a library, an office building) in which the one or more wireless charger is positioned in or proximate thereto. Accordingly, the one or more wireless chargers may operate regardless of whether a power system of an associated device or building is configured to provide power. Furthermore, in comparison to conventional charging systems, various exemplary embodiments of the present invention may reduce costs by utilizing renewable energy to charge electronic devices.

[0169] Those of skill in the art would understand that information and signals may be represented using any of a variety of different technologies and techniques. For example, data, instructions, commands, information, signals, bits, symbols, and chips that may be referenced throughout the above description may be represented by voltages, currents, electromagnetic waves, magnetic fields or particles, optical fields or particles, or any combination thereof.

[0170] Those of skill would further appreciate that the various illustrative logical blocks, modules, circuits, and algorithm steps described in connection with the exemplary embodiments disclosed herein may be implemented as electronic hardware, computer software, or combinations of both. To clearly illustrate this interchangeability of hardware and software, various illustrative components, blocks, modules, circuits, and steps have been described above generally in

terms of their functionality. Whether such functionality is implemented as hardware or software depends upon the particular application and design constraints imposed on the overall system. Skilled artisans may implement the described functionality in varying ways for each particular application, but such implementation decisions should not be interpreted as causing a departure from the scope of the exemplary embodiments of the invention.

[0171] The various illustrative logical blocks, modules, and circuits described in connection with the exemplary embodiments disclosed herein may be implemented or performed with a general purpose processor, a Digital Signal Processor (DSP), an Application Specific Integrated Circuit (ASIC), a Field Programmable Gate Array (FPGA) or other programmable logic device, discrete gate or transistor logic, discrete hardware components, or any combination thereof designed to perform the functions described herein. A general purpose processor may be a microprocessor, but in the alternative, the processor may be any conventional processor, controller, microcontroller, or state machine. A processor may also be implemented as a combination of computing devices, e.g., a combination of a DSP and a microprocessor, a plurality of microprocessors, one or more microprocessors in conjunction with a DSP core, or any other such configuration.

[0172] The steps of a method or algorithm described in connection with the exemplary embodiments disclosed herein may be embodied directly in hardware, in a software module executed by a processor, or in a combination of the two. A software module may reside in Random Access Memory (RAM), flash memory, Read Only Memory (ROM), Electrically Programmable ROM (EPROM), Electrically Erasable Programmable ROM (EEPROM), registers, hard disk, a removable disk, a CD-ROM, or any other form of storage medium known in the art. An exemplary storage medium is coupled to the processor such that the processor can read information from, and write information to, the storage medium. In the alternative, the storage medium may be integral to the processor. The processor and the storage medium may reside in an ASIC. The ASIC may reside in a user terminal. In the alternative, the processor and the storage medium may reside as discrete components in a user terminal.

[0173] In one or more exemplary embodiments, the functions described may be implemented in hardware, software, firmware, or any combination thereof. If implemented in software, the functions may be stored on or transmitted over as one or more instructions or code on a computer-readable medium. Computer-readable media includes both computer storage media and communication media including any medium that facilitates transfer of a computer program from one place to another. A storage media may be any available media that can be accessed by a computer. By way of example, and not limitation, such computer-readable media can comprise RAM, ROM, EEPROM, CD-ROM or other optical disk storage, magnetic disk storage or other magnetic storage devices, or any other medium that can be used to carry or store desired program code in the form of instructions or data structures and that can be accessed by a computer. Also, any connection is properly termed a computer-readable medium. For example, if the software is transmitted from a website, server, or other remote source using a coaxial cable, fiber optic cable, twisted pair, digital subscriber line (DSL), or wireless technologies such as infrared, radio, and microwave, then the coaxial cable, fiber optic cable, twisted pair, DSL, or wireless technologies such as infrared, radio, and microwave



are included in the definition of medium. Disk and disc, as used herein, includes compact disc (CD), laser disc, optical disc, digital versatile disc (DVD), floppy disk and blu-ray disc where disks usually reproduce data magnetically, while discs reproduce data optically with lasers. Combinations of the above should also be included within the scope of computer-readable media.

**[0174]** The previous description of the disclosed exemplary embodiments is provided to enable any person skilled in the art to make or use the present invention. Various modifications to these exemplary embodiments will be readily apparent to those skilled in the art, and the generic principles defined herein may be applied to other embodiments without departing from the spirit or scope of the invention. Thus, the present invention is not intended to be limited to the exemplary embodiments shown herein but is to be accorded the widest scope consistent with the principles and novel features disclosed herein.

What is claimed is:

1. A charging system, comprising:  
at least one transmit antenna coupled to a power generation system and configured to receive another form of energy conveyed from the power generation system configured to convert renewable energy to another form of energy and convey the another form of energy; and  
wherein the at least one transmit antenna is configured to wirelessly transmit energy to at least one other antenna positioned within an associated coupling-mode region.
2. The charging system of claim 1, wherein the at least one transmit antenna is coupled to the power generation system via a wired connection.
3. The charging system of claim 1, wherein the power generation system comprises one of a solar cell, a wind turbine, and a water turbine.
4. The charging system of claim 1, wherein the at least one transmit antenna is positioned at an outdoor location and coupled to the power generation system via a wired connection.
5. The charging system of claim 1, further comprising a barrier positioned between the at least one transmit antenna and the power generation system.
6. The charging system of claim 1, wherein the one other antenna comprises a receive antenna coupled to a chargeable device.
7. The charging system of claim 6, wherein the receive antenna is configured to receive wirelessly transmitted energy and charge the chargeable device coupled thereto.
8. The charging system of claim 1, wherein the at least one other antenna comprises a repeater antenna configured to receive energy wirelessly transmitted from that at least one transmit antenna.
9. The charging system of claim 8, further comprising a barrier positioned between the at least one transmit antenna and the at least one repeater antenna.
10. The charging system of claim 9, wherein that at least one transmit antenna is secured to an outer surface of the barrier and the at least one repeater is secured to an inner surface of the barrier.
11. The charging system of claim 8, wherein the repeater antenna is configured to wirelessly transmit energy to one or more other antennas positioned within an associated coupling-mode region.
12. The charging system of claim 11, wherein the one or more other antennas comprise one or more receive antennas,

wherein each receive antenna of the one or more is coupled to a battery of a chargeable device.

13. The charging system of claim 12, wherein each receive antenna is configured to receive wirelessly transmitted energy and charge the battery coupled thereto.

14. The charging system of claim 1, wherein the at least one transmit antenna is positioned within one of a bus, a train, and a building.

15. The charging system of claim 1, wherein the barrier comprises one of a wall and a window of one of a bus, a train, and a building.

16. The charging system of claim 1, further comprising at least one receive antenna configured to receive the energy wirelessly transmitted from the at least one transmit antenna, wherein each receive antenna of the at least one is coupled to a battery of a chargeable device.

17. The charging system of claim 1, wherein the power generation system is secured to a top outer surface of one of a bus, a building, and a train.

18. A charging system, comprising:

at least one transmit antenna positioned at an outdoor location and proximate a barrier and configured to receive power from a power generation system via a wired connection, wherein the power generation system is configured to convert renewable energy to another form of energy; and

at least one repeater antenna separated from the at least one transmit antenna by the barrier and configured to receive power wirelessly transmitted from the at least one transmit antenna, wherein the at least one repeater antenna is configured to wirelessly transmit energy to at least one other antenna positioned within an associated coupling-mode region.

19. The charging system of claim 18, wherein the at least one transmit antenna is secured to an outer surface of the barrier.

20. The charging system of claim 18, wherein the at least one repeater antenna is secured to an inner surface of the barrier.

21. The charging system of claim 18, wherein the at least one other antenna comprises at least one receive antenna, wherein each receive antenna of the at least one is coupled to a battery of a chargeable device.

22. A method of operating a charging system, comprising:  
converting renewable energy to another form of energy;  
conveying the another form of energy to at least one transmit antenna; and

wirelessly transmitting energy from the at least one transmit antenna to at least one other antenna positioned within a near-field of the at least one transmit antenna.

23. The method of claim 22, wherein conveying the another form of energy to at least one transmit antenna comprises conveying the another form of energy to at least one transmit antenna via a wired connection.

24. The method of claim 22, wherein conveying the another form of energy to at least one transmit antenna comprises conveying the another form of energy to at least one transmit antenna via a wired connection extending through a barrier.

25. The method of claim 22, wherein wirelessly transmitting power from the at least one transmit antenna to at least one other antenna comprises wirelessly transmitting power through a barrier positioned between the at least one transmit antenna and the at least one other antenna.

26. The method of claim 22, further comprising charging a chargeable device coupled to the at least one other antenna.

27. A system that facilitates operating a charging system, the device comprising:

means for converting renewable energy to another form of energy;

means for conveying the another form of energy to at least one transmit antenna; and

means for wirelessly transmitting energy from the at least one transmit antenna to at least one other antenna positioned within a near-field of the at least one antenna.

\* \* \* \* \*