



US007657868B2

(12) **United States Patent**
Shenfield et al.

(10) **Patent No.:** **US 7,657,868 B2**
(45) **Date of Patent:** **Feb. 2, 2010**

(54) **SYSTEM AND METHOD FOR APPLYING
DEVELOPMENT PATTERNS FOR
COMPONENT BASED APPLICATIONS**

(75) Inventors: **Michael Shenfield**, Richmond Hill
(CA); **Bryan R. Goring**, Milton (CA);
Daniel Mateescu, Toronto (CA)

(73) Assignee: **Research In Motion Limited**, Waterloo,
Ontario (CA)

(*) Notice: Subject to any disclaimer, the term of this
patent is extended or adjusted under 35
U.S.C. 154(b) by 463 days.

(21) Appl. No.: **11/078,430**

(22) Filed: **Mar. 14, 2005**

(65) **Prior Publication Data**

US 2006/0206864 A1 Sep. 14, 2006

(51) **Int. Cl.**
G06F 9/44 (2006.01)

(52) **U.S. Cl.** 717/107; 717/109; 717/121;
715/763; 715/764

(58) **Field of Classification Search** 717/107–109,
717/116, 121–122; 715/763, 764
See application file for complete search history.

(56) **References Cited**

U.S. PATENT DOCUMENTS

6,104,874 A * 8/2000 Branson et al. 717/108
(Continued)

FOREIGN PATENT DOCUMENTS

WO WO 98/30962 A 7/1998
(Continued)

OTHER PUBLICATIONS

International Search Report, Application No. EP 05 10 1958, dated
Aug. 19, 2005; "Deploying BlackBerry Desktop and Handheld Soft-
ware" 2003, XP002288590 *p. 3, line 24-p. 6, line 2*.

Primary Examiner—Wei Y Zhen

Assistant Examiner—Satish Rampuria

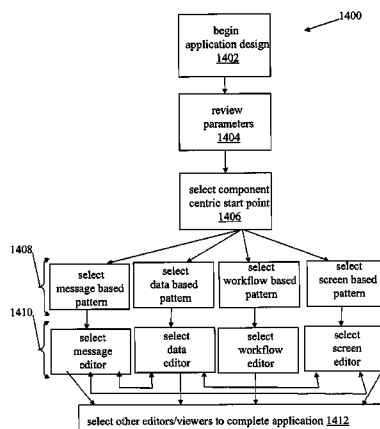
(74) *Attorney, Agent, or Firm*—Gowling Lafleur Henderson
LLP; Xiang Lu; Mark Sprigings

(57) **ABSTRACT**

A computing device and method for coordinating the devel-
opment of a client application including application compo-
nents comprising one or more of at least one of a data compo-
nent, a message component or a screen component, having
corresponding component definitions, or a workflow compo-
nent comprising a series of instructions. A first development
pattern module configured for interaction with a development
environment is provided by a computer user interface, the first
development pattern module configured for selecting a first
pattern from a plurality of patterns based on an application
component type central to the client application, the develop-
ing definitions of at least one of the application components
through interaction with a data model of the development
environment providing a persistent state of the application
components . . . the first pattern is selected from the group
consisting of: a pattern for generating a suitable application
based on an available backend data source messaging
description; a pattern for developing the suitable application
based on an available backend data source messaging
description such that the entire application is developed
including data components and screen components; a pattern
for developing the application based on an existing database
schema; a pattern for developing a standard set of data compo-
nents that model a particular business domain for the appli-
cation, a screen pattern for coordinating the development of a
screen component as the first component; a message pattern
for coordinating a development of a message component as
the first component; and a script pattern for coordinating a
development of a workflow component as a second compo-
nent as recited in a manner in the independent claims 1 and 21.

Any comments considered necessary by applicant must be
submitted no later than the payment of the issue fee and, to
avoid processing delays, should preferably accompany the
issue fee. Such submissions should be clearly labeled "Com-
ments on Statement of Reasons for Allowance."

36 Claims, 18 Drawing Sheets



U.S. PATENT DOCUMENTS

6,226,788	B1 *	5/2001	Schoening et al.	717/107
6,993,743	B2 *	1/2006	Crupi et al.	717/102
7,000,219	B2 *	2/2006	Barrett et al.	717/107
7,047,518	B2 *	5/2006	Little et al.	717/108
7,178,129	B2 *	2/2007	Katz	717/108
7,219,327	B1 *	5/2007	Jacobs et al.	717/104
7,266,806	B2 *	9/2007	Choi et al.	717/108
7,272,819	B2 *	9/2007	Seto et al.	717/109
7,296,263	B1 *	11/2007	Jacob	717/143
7,493,594	B2	2/2009	Shenfield et al.	
2002/0026474	A1	2/2002	Wang et al.	
2004/0003400	A1	1/2004	Carney et al.	
2004/0172555	A1	9/2004	Beringer et al.	
2004/0177335	A1	9/2004	Beisiegel et al.	
2005/0257190	A1 *	11/2005	Shaburov et al.	717/106
2006/0206861	A1	9/2006	Shenfield et al.	
2006/0206890	A1	9/2006	Shenfield et al.	

FOREIGN PATENT DOCUMENTS

WO	WO 01/46802	*	6/2001
WO	WO 01/46802	A	6/2001

WO WO 2004/059938 A 7/2004

OTHER PUBLICATIONS

Abrams M et al: "UIML: an appliance-independent XML user interface language" Computer Networks, Elsevier Science Publishers B.V., Amsterdam, NL. vol. 31, No. 11-16, May 17, 1999, pp. 1695-1708, XP004304584 ISSN: 1389-1289 *abstract* *p. 1699, left-hand column, line 22—p. 1701, right-hand column, last line*.

European Search Report issued by the European Patent Office dated Sep. 6, 2005 for corresponding European Patent Application No. 05101956.

European Search Report issued by the European Patent Office dated Nov. 5, 2005 for corresponding European Patent Application No. 05101955.2.

Xiulan, Yu et al., "WSCE: a flexible web service composition environment." XP010708875, the whole document.

European Search Report issued by the European Patent Office dated Aug. 29, 2005 for corresponding European Patent Application No. 05101890.1.

Tatsubori, M. et al., "Best-practice patterns and tool support for configuring secure web services messaging" XP010708861, the whole document.

* cited by examiner

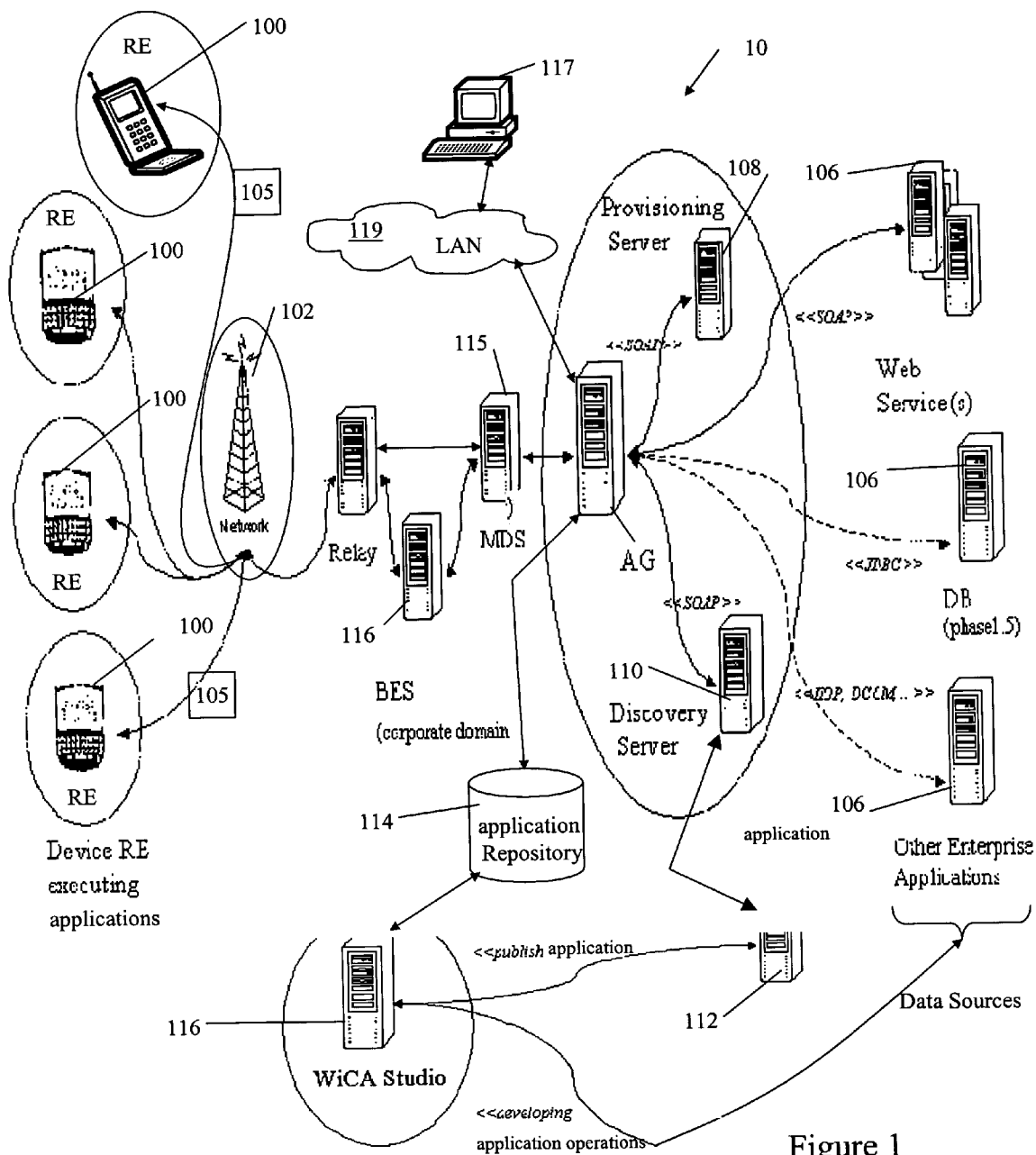
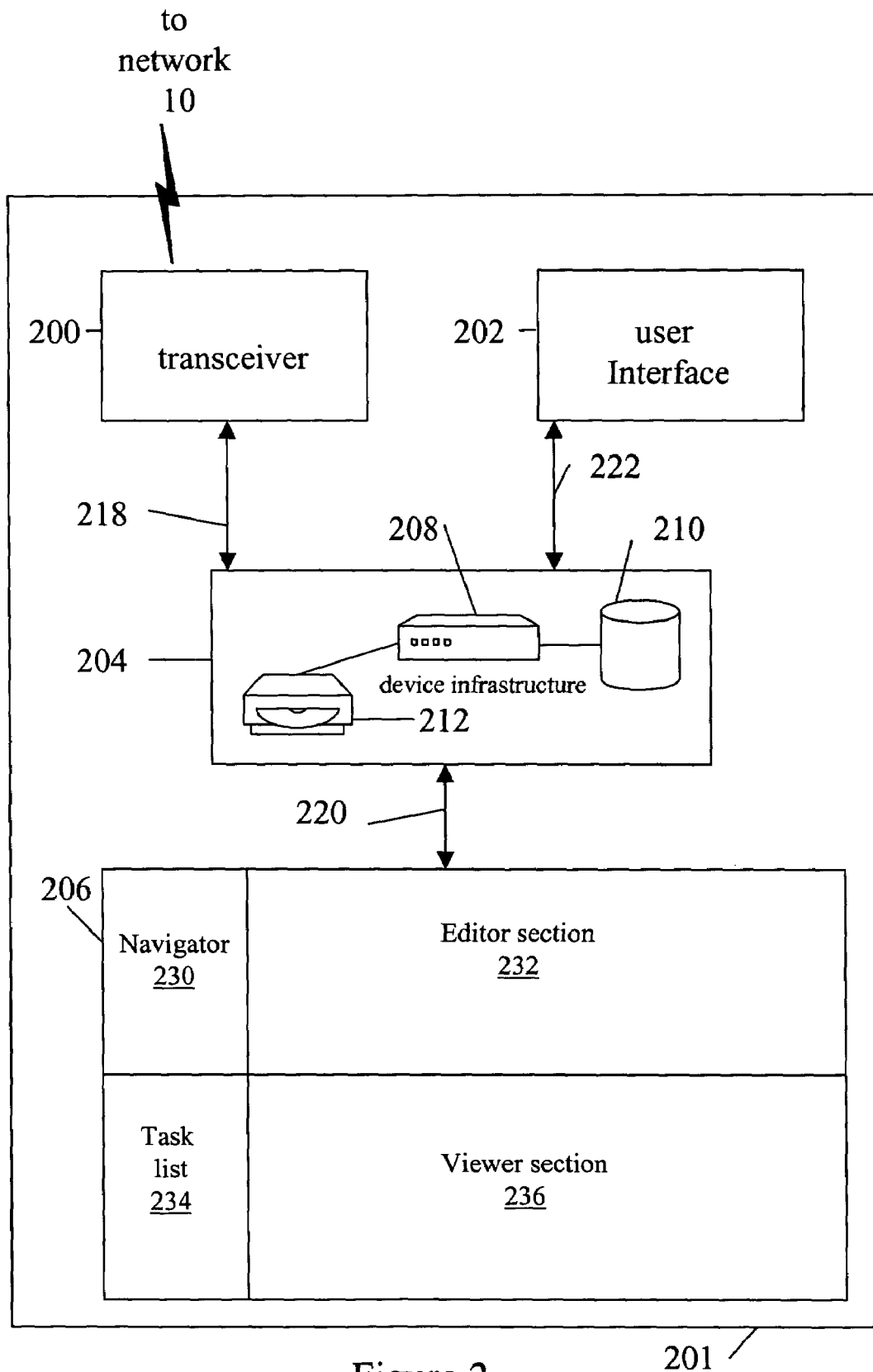


Figure 1

Figure 2

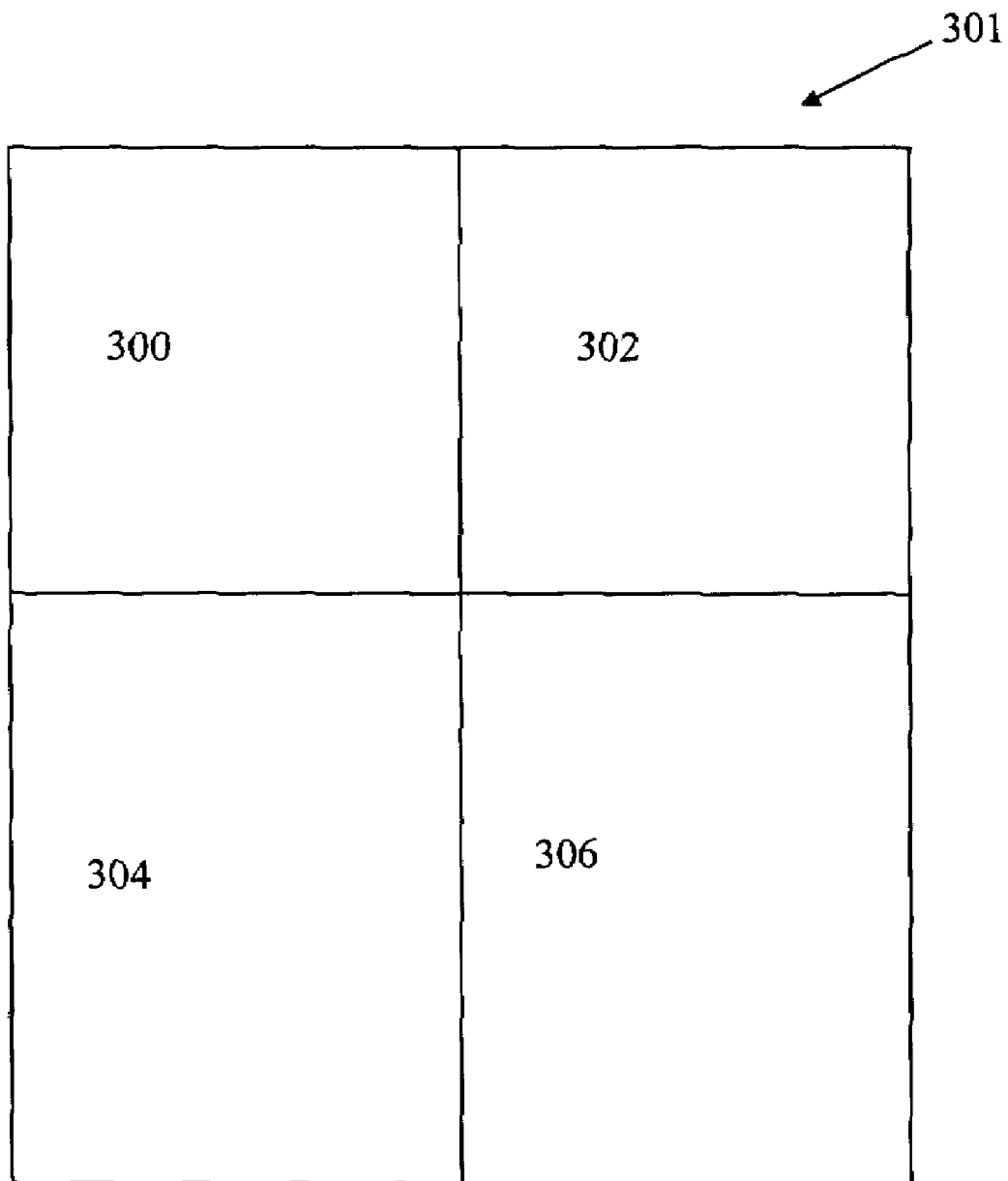
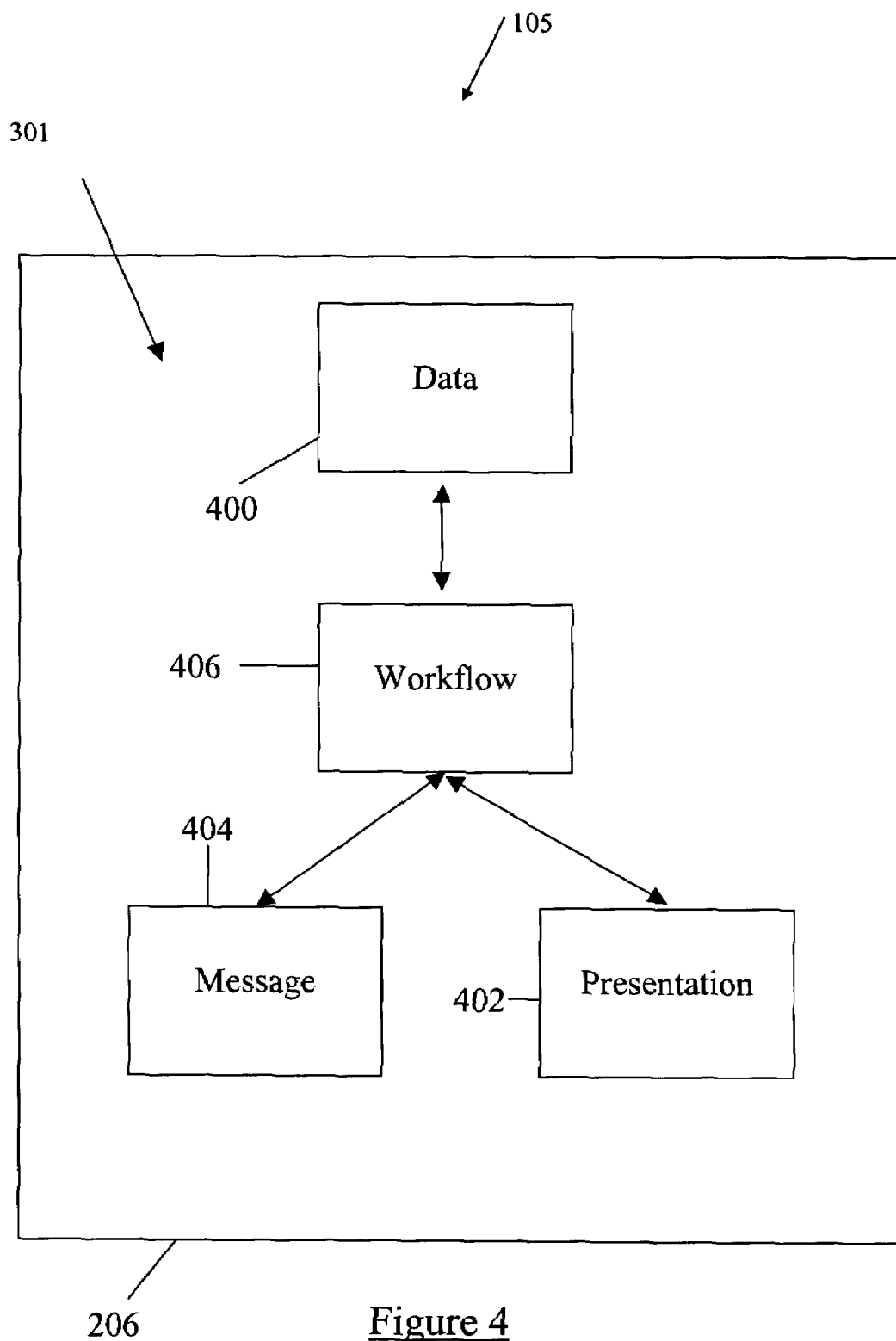


Figure 3



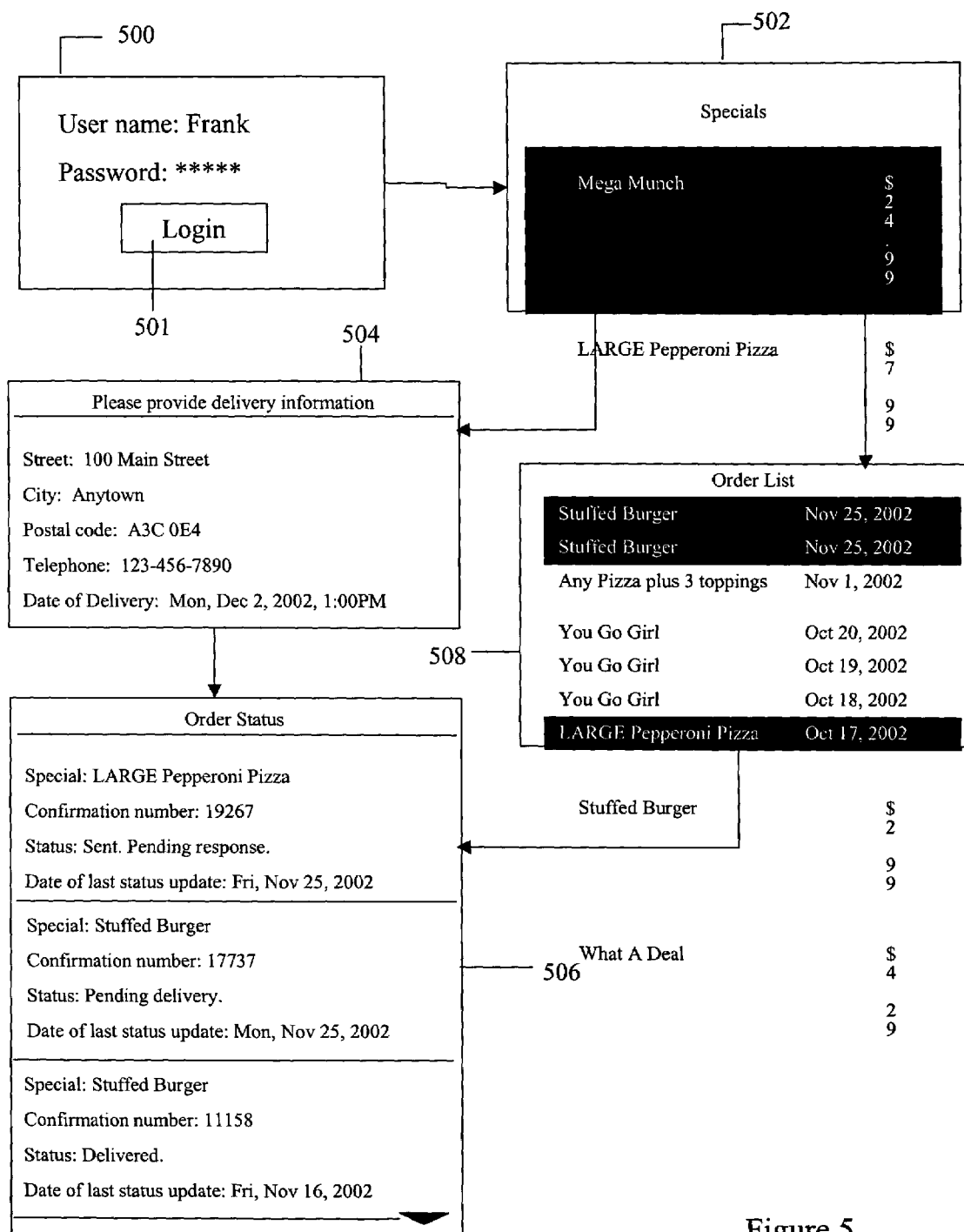


Figure 5

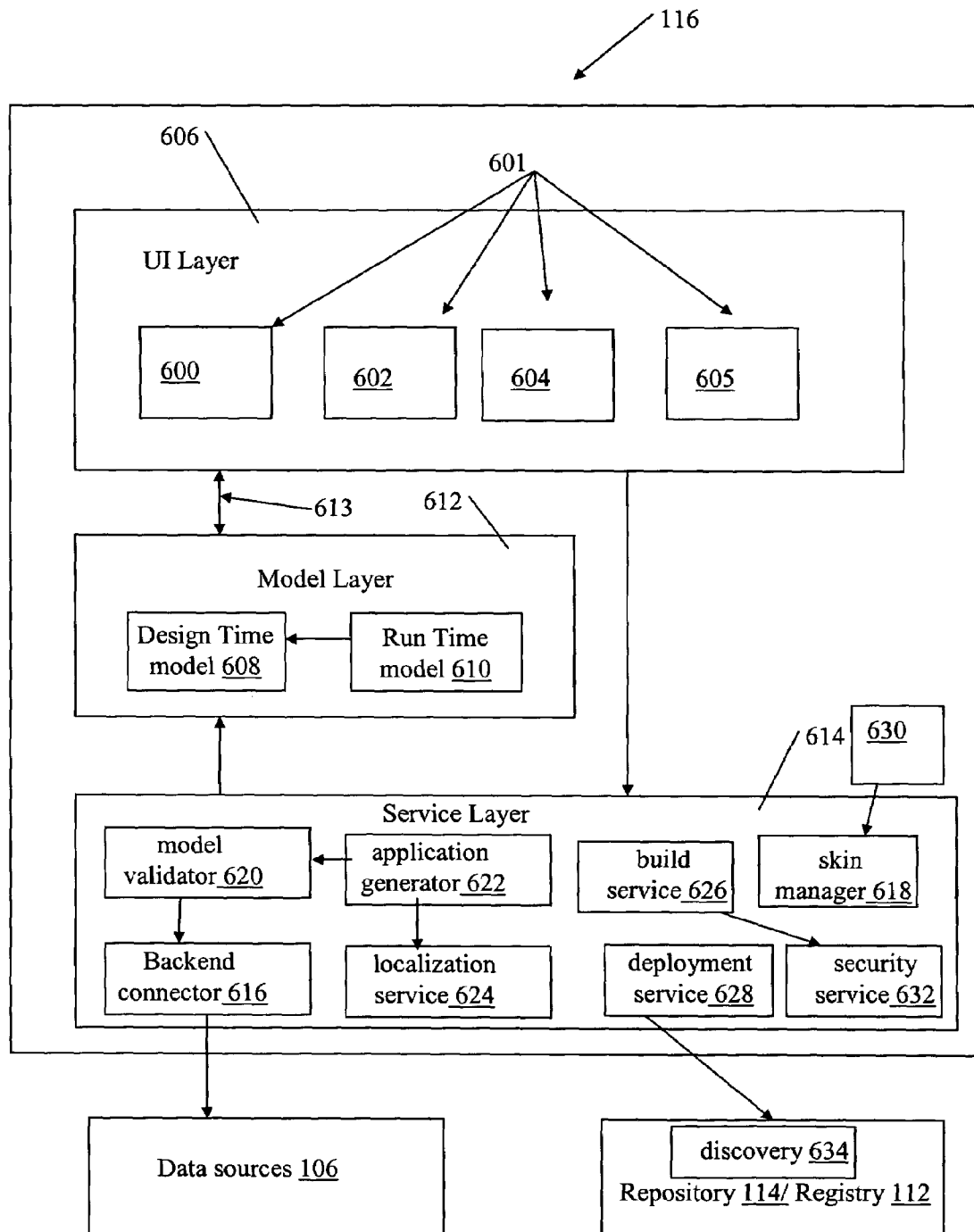
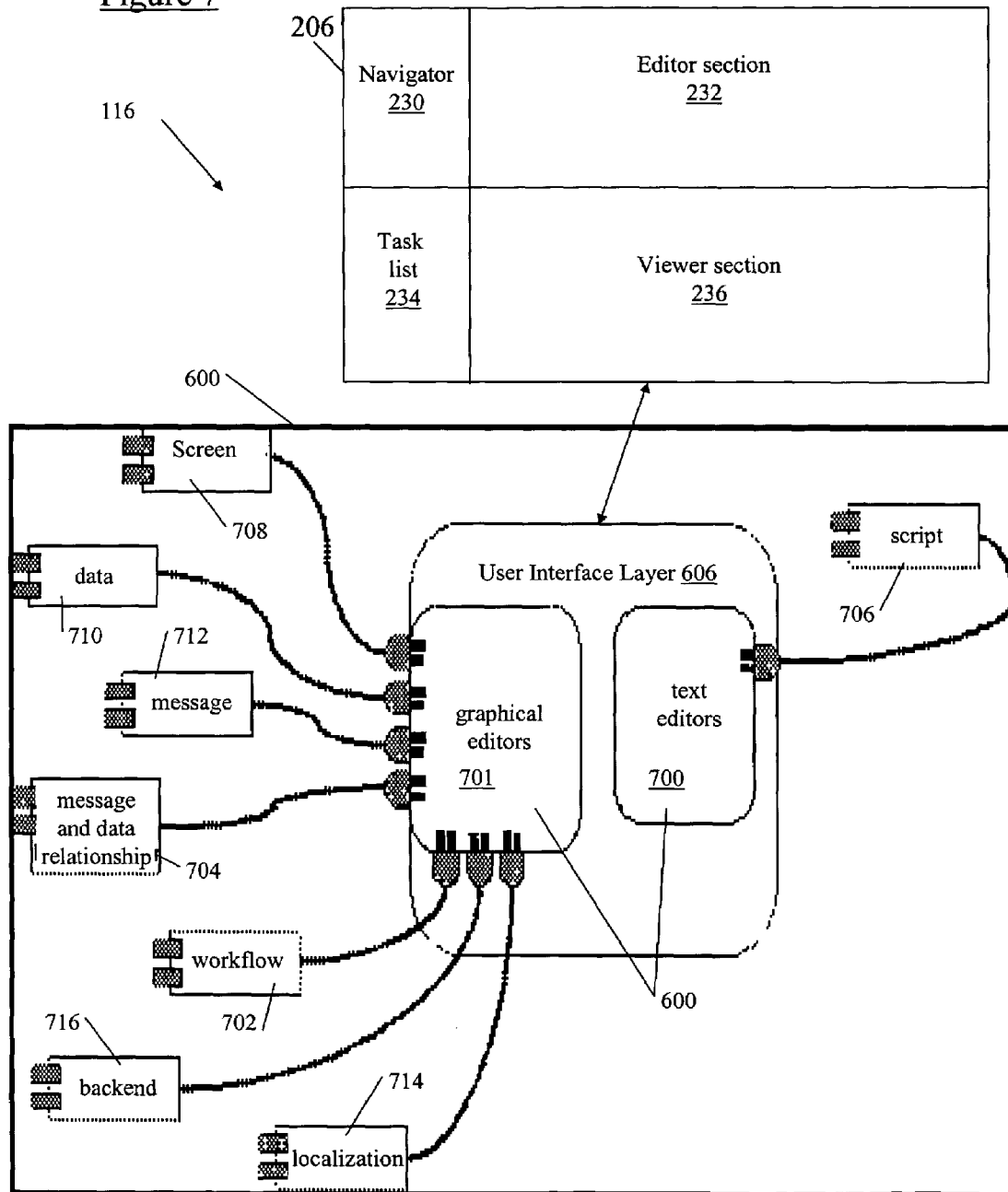
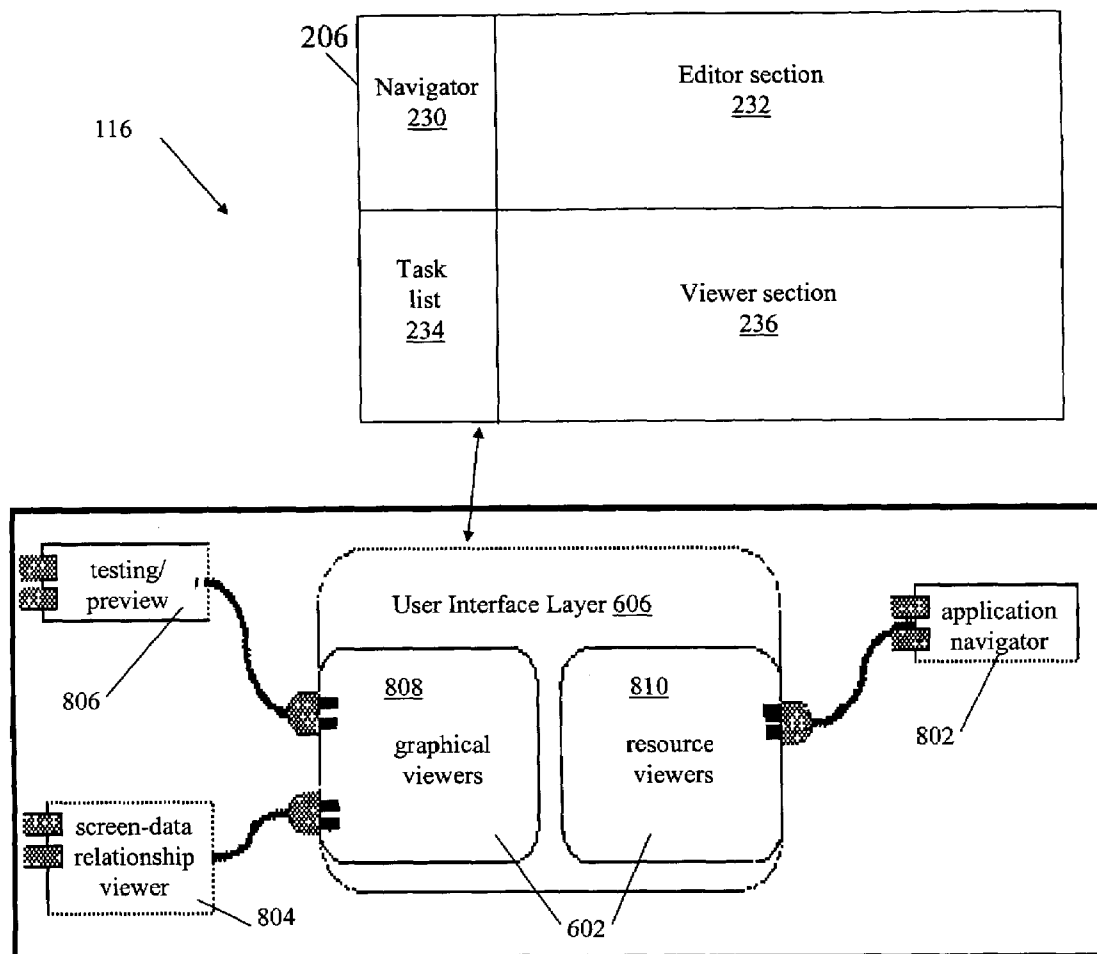
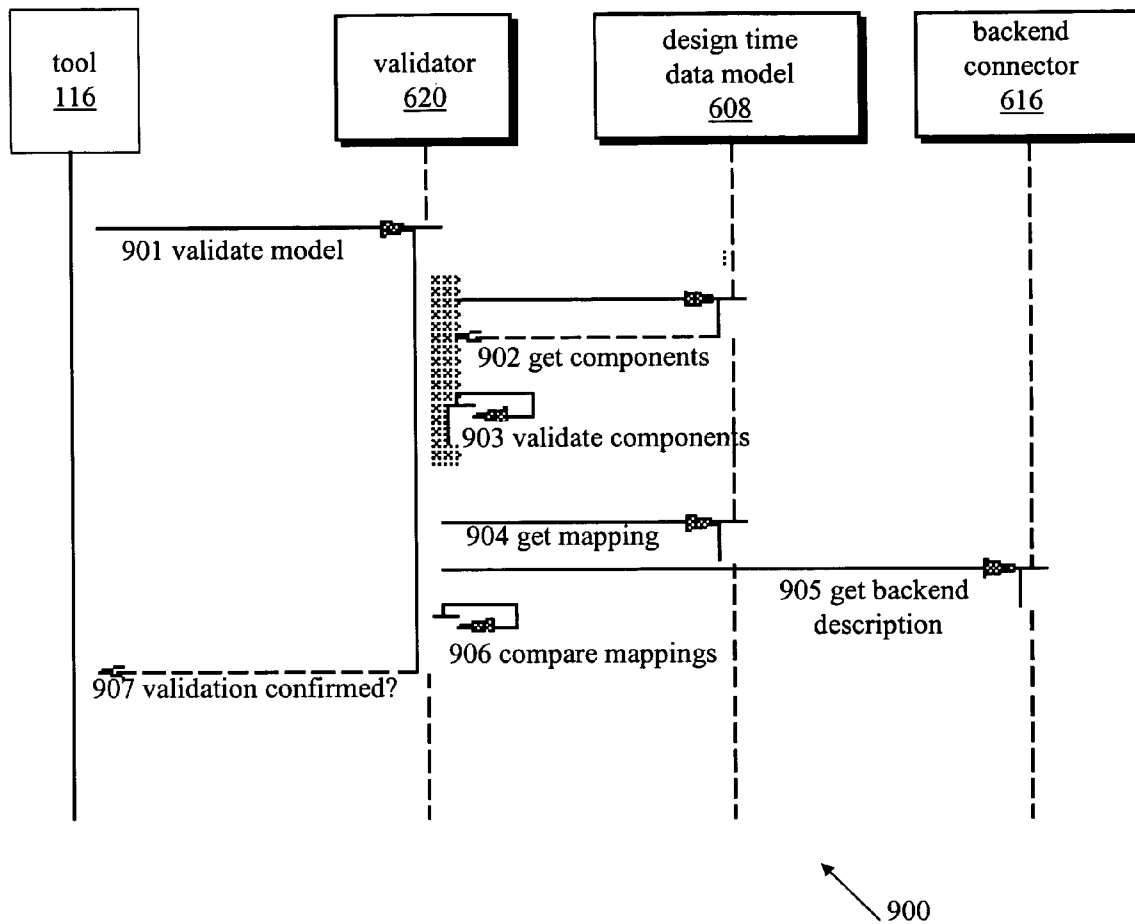


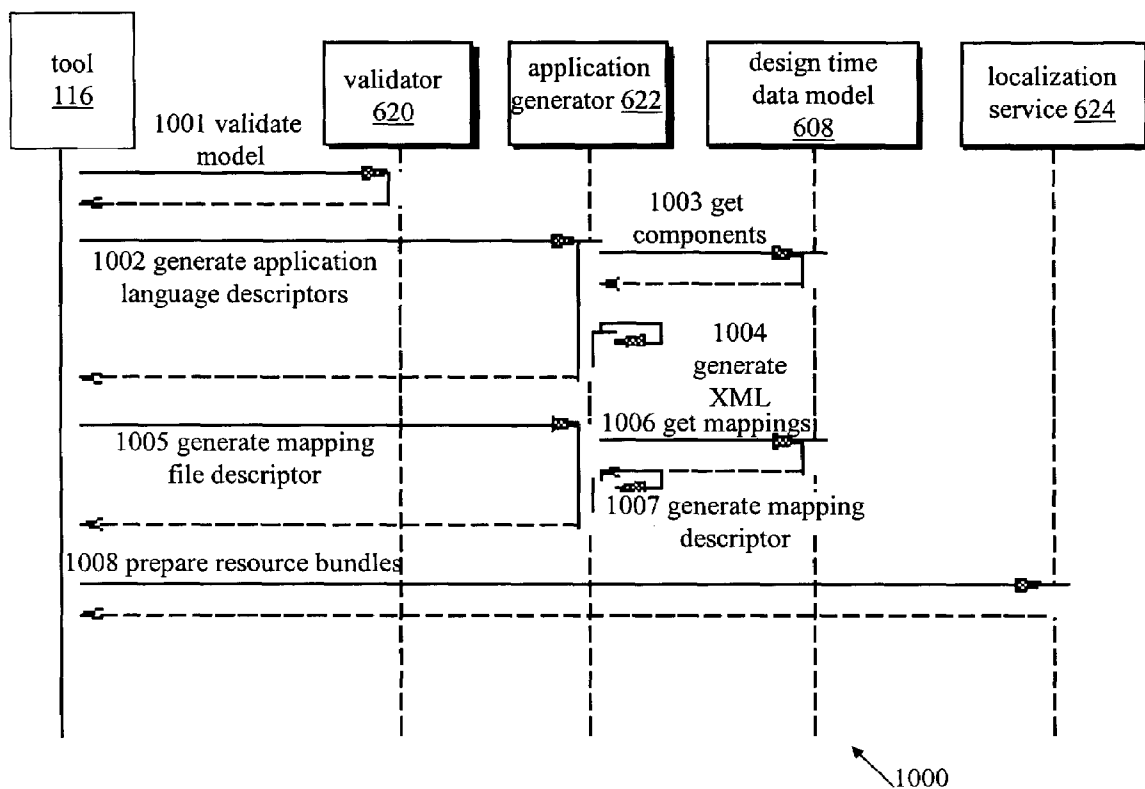
Figure 6

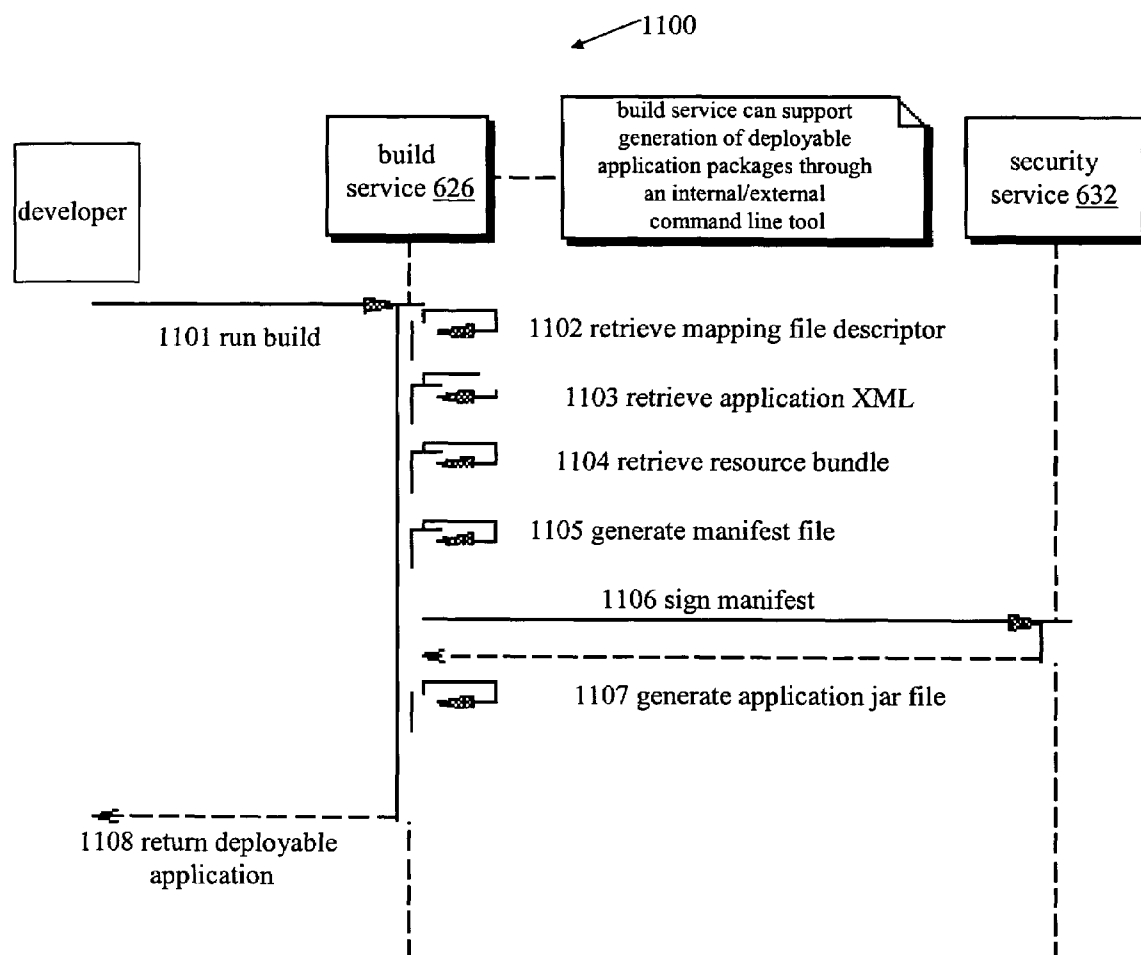
Figure 7

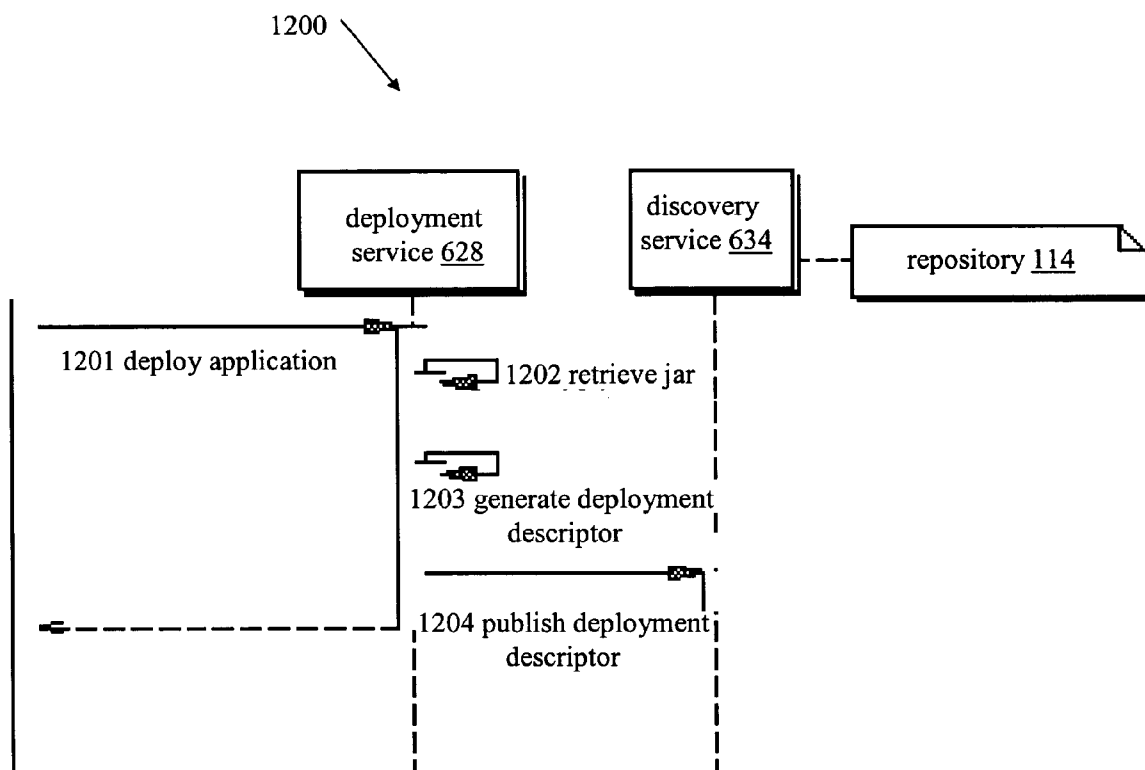


Figure 8

Figure 9

Figure 10

Figure 11

Figure 12

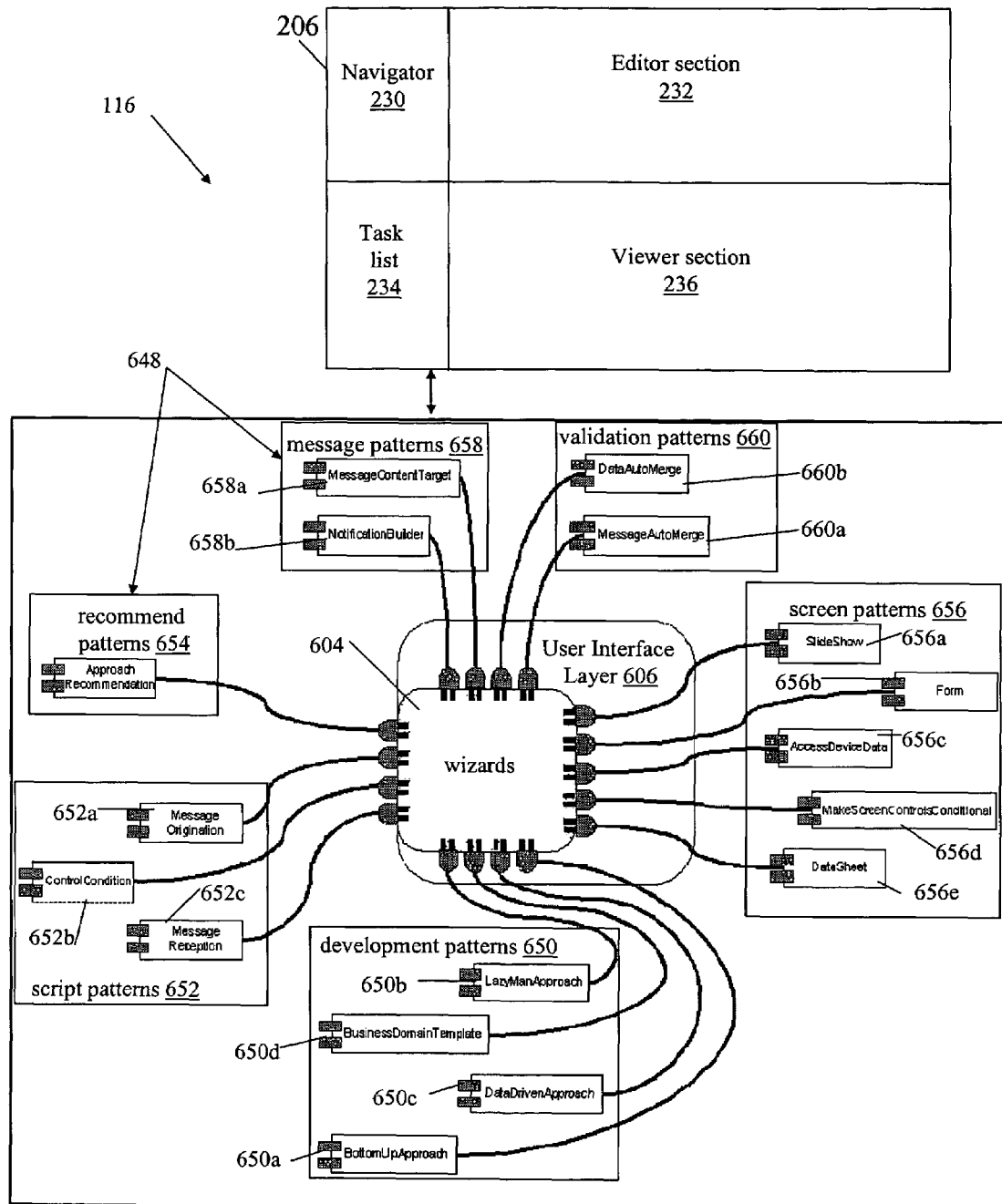
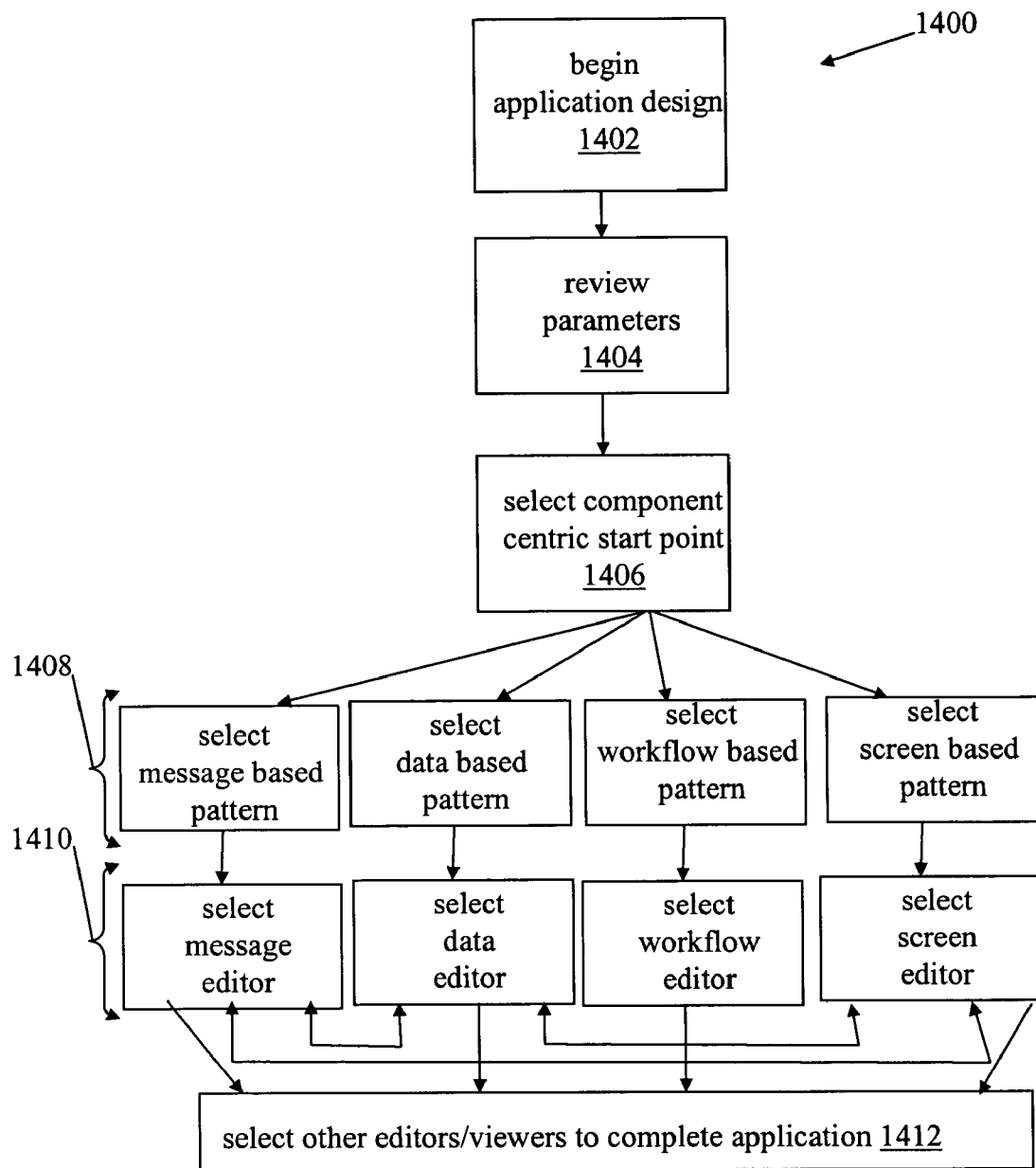


Figure 13

Figure 14

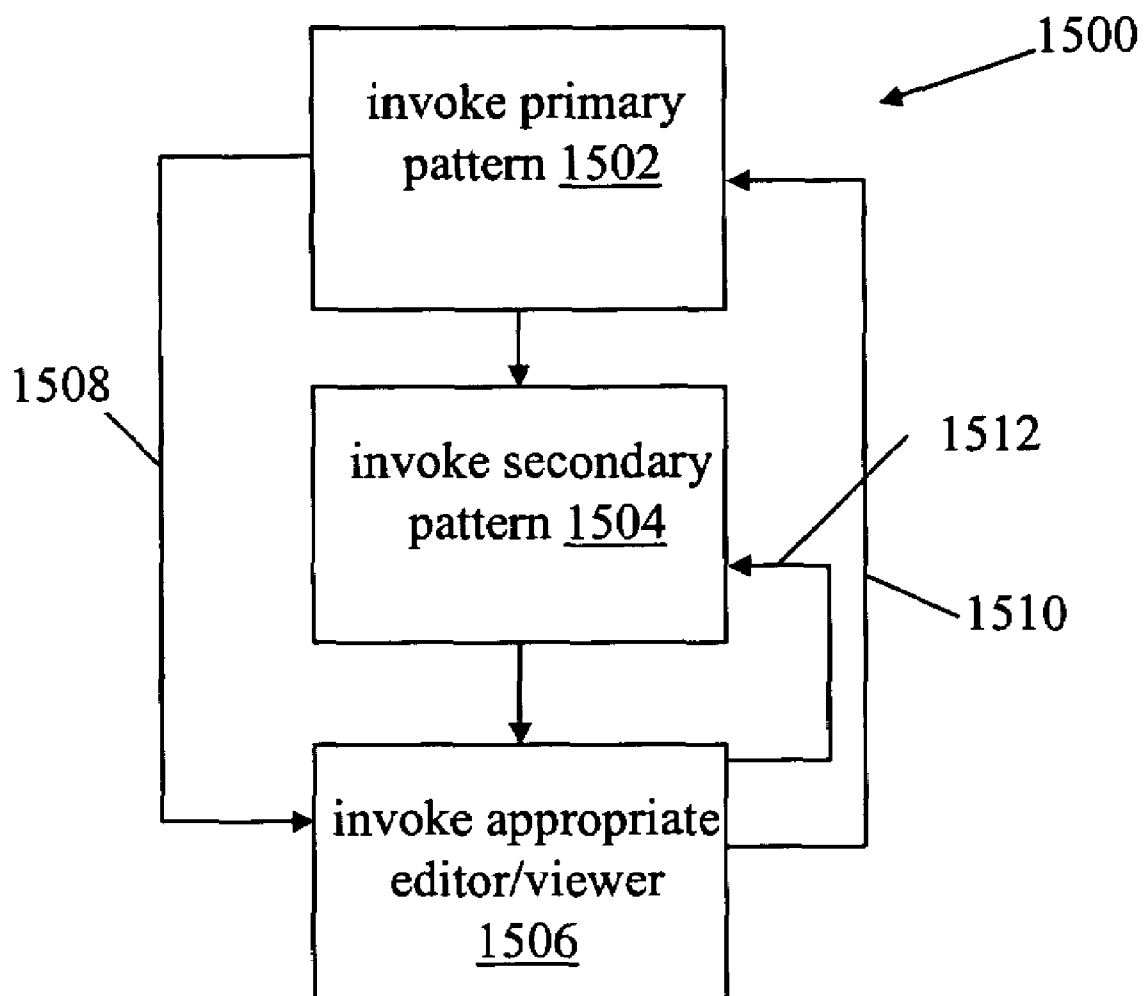


Figure 15

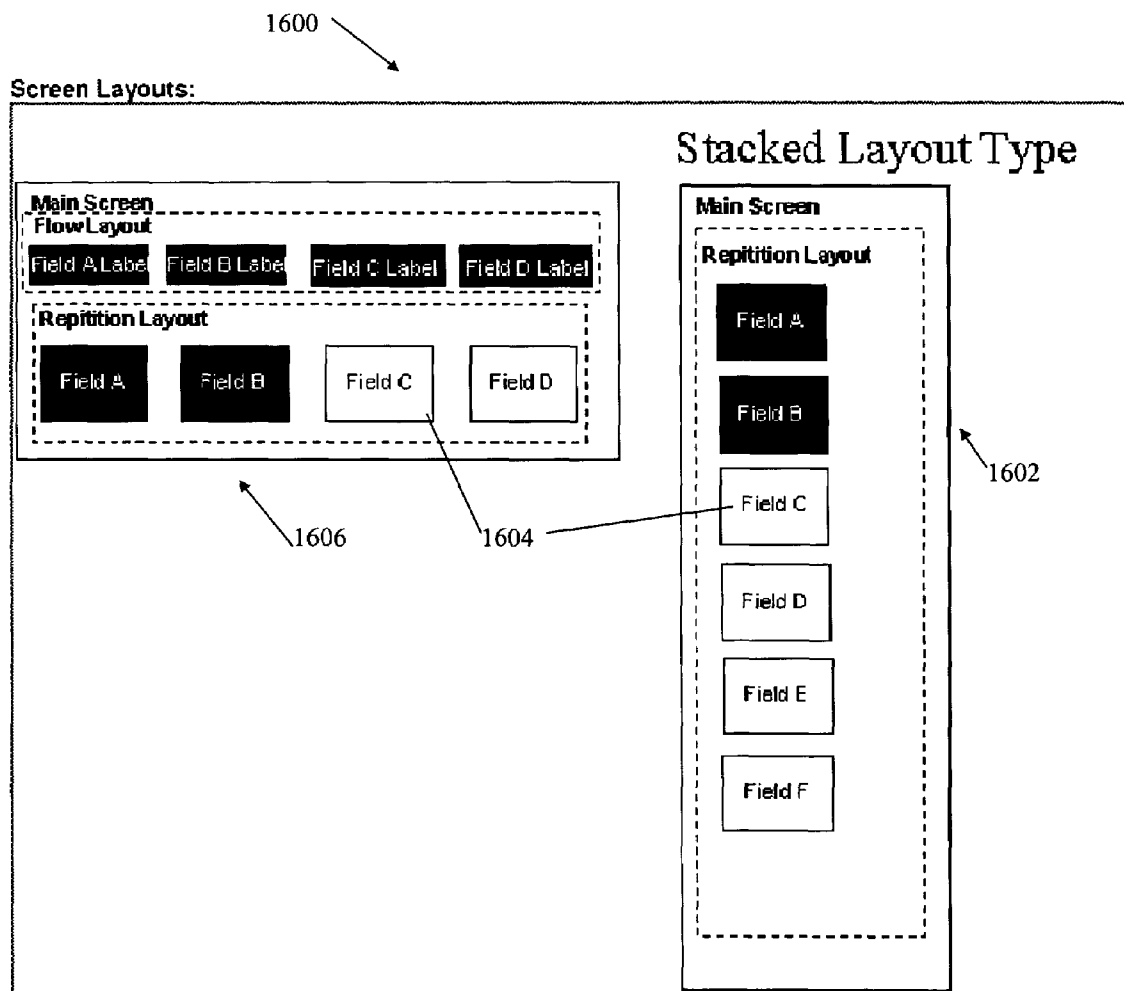


Figure 16

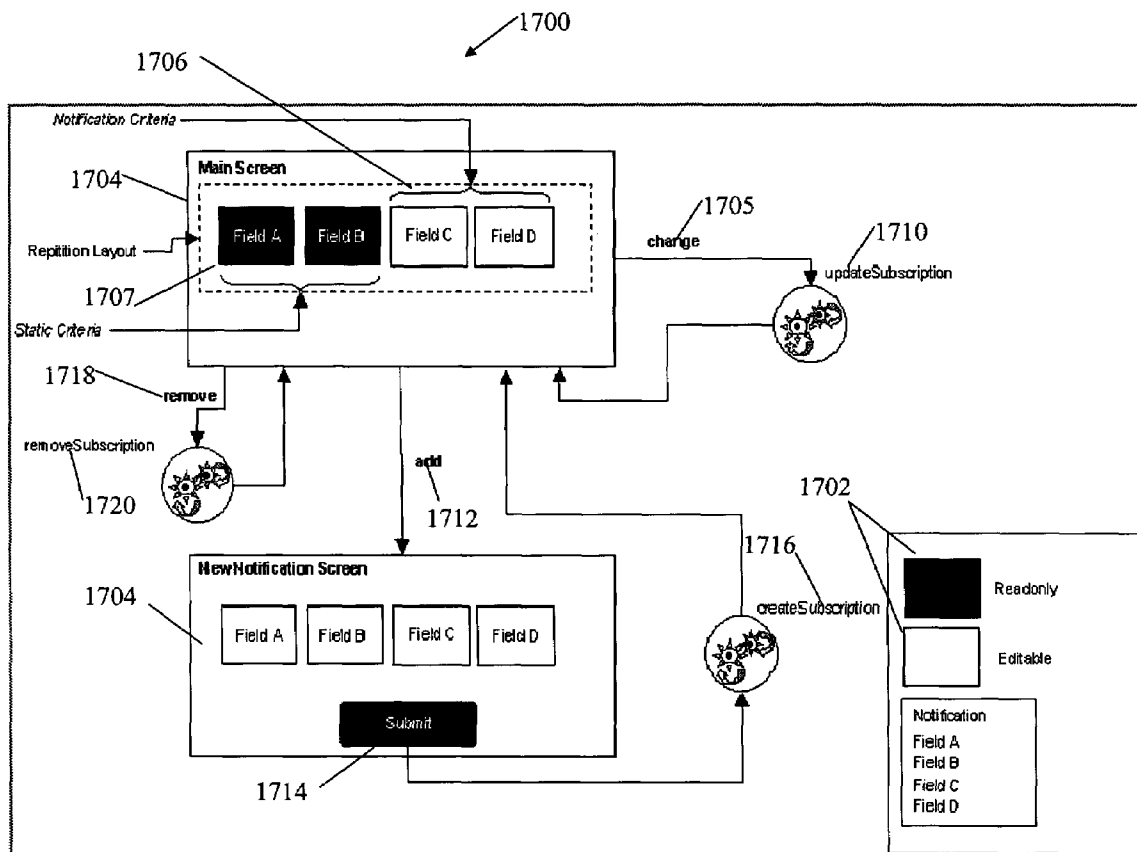


Figure 17

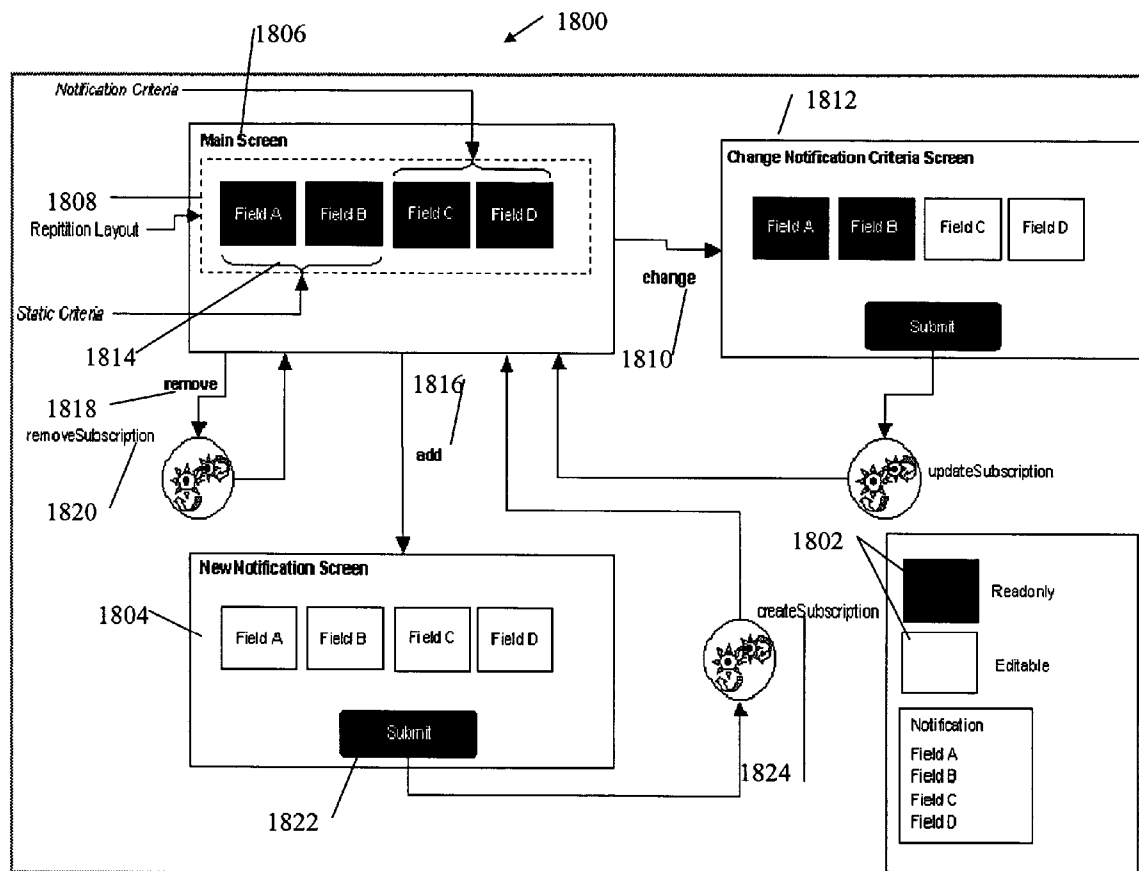


Figure 18

SYSTEM AND METHOD FOR APPLYING DEVELOPMENT PATTERNS FOR COMPONENT BASED APPLICATIONS

REFERENCE TO A COMPUTER PROGRAM LISTING APPENDIX

A computer program listing appendix is filed herewith submitted on a single compact disc (Copy 1) and a duplicate copy (Copy 2) of the compact disc. The contents of the compact disk, and its duplicate copy, include five (5) ASCII files entitled, "11078430_1.txt", "11078430_2.txt", "11078430_3.txt", "11078430_4.txt", and "11078430_5.txt". The contents of this computer program listing appendix, filed on compact disk, are incorporated herein by reference.

BACKGROUND

This application relates generally to development of component based applications and their availability over a network.

There is a continually increasing number of terminals and mobile devices in use today, such as smart phones, PDAs with wireless communication capabilities, personal computers, self service kiosks and two-way pagers/communication devices. Software applications which run on these devices increase their utility. For example, a smart phone may include an application which retrieves the weather for a range of cities, or a PDA may include an application that allows a user to shop for groceries. These software applications take advantage of the connectivity to a network in order to provide timely and useful services to users. However, due to the restricted resources of some devices, and the complexity of delivering large amounts of data to the devices, developing and maintaining software applications tailored for a variety of devices remains a difficult and time-consuming task.

Currently, mobile communication devices are configured to communicate with Web Services through Internet based Browsers and/or native applications. Browsers have the advantage of being adaptable to operate on a cross-platform basis for a variety of different devices, but have a disadvantage of requesting pages (screen definitions in HTML) from the Web Service, which hinders the persistence of data contained in the screens. A further disadvantage of Browsers is that the screens are rendered at runtime, which can be resource intensive. Native applications have the advantage of being developed specifically for the type of mobile device, thereby providing a relatively optimized application program for each runtime environment. However, native applications have a disadvantage of not being platform independent, thereby necessitating the development of multiple versions of the same application, as well as being relatively large in size, thereby taxing the memory resources of the mobile device. Further, application developers need experience with programming languages such as Java™ and C++ to construct these hard coded native applications. There is a need for application development environments that can assist in the development of applications for selected devices and terminals with their respective runtime environment, as well as being capable of selecting from a variety of back-end data sources.

Systems and methods disclosed herein provide a component based application development environment to obviate or mitigate at least some of the above presented disadvantages.

SUMMARY

Current software applications take advantage of the connectivity to a network in order to provide timely and useful services to users. However, due to the restricted resources of some devices, and the complexity of delivering large amounts of data to the devices, developing and maintaining software applications tailored for a variety of devices remains a difficult and time-consuming task. Current application generation environments are not based on component application architecture, which facilitates generation of an application for running on clients having a wide variety of runtime environments. Native applications are an example of current applications which have disadvantages of not being platform independent, thereby necessitating the development and subsequent generation of multiple versions of the same application, as well as being relatively large in size, thereby taxing the memory resources of the mobile device.

Contrary to current application generation environments a system and method is provided for coordinating the development of an application including a first component having definitions expressed in a structured definition language and a second component having a series of instructions. The components define the processing on a device runtime environment of messages communicated over a network between the device and a datasource. The system and method comprise a first development pattern configured for interaction with a development environment provided by a computer user interface, the first pattern for guiding a user of the user interface with a plurality of predefined steps to coordinate the development of the application components through user input events via the user interface. The first pattern is configured for selecting from a plurality of patterns based on a component type central to the first development pattern such that he component type is selected from a plurality of types including at least one of data, message, screen, and workflow. The system and method also include a first module corresponding to the selected component type and configured for coupling to the first pattern. The first module is for developing the definitions of at least one of the components through interaction with a data model of the development environment providing a persistent state of the application. The operation of the first module is coordinated using the plurality of the predefined steps communicated to the user through the user interface; wherein the developed components are subsequently assembled as the application.

Accordingly, a system is provided for coordinating the development of an application including a first component having definitions expressed in a structured definition language and a second component having a series of instructions, the components for defining the processing on a device runtime environment of messages communicated over a network between the device and a datasource, the system comprising: a first development pattern module configured for interaction with a development environment provided by a computer user interface, the first pattern for guiding a user of the user interface with a plurality of predefined steps to coordinate the development of the application components through user input events via the user interface, the first pattern configured for selecting from a plurality of patterns based on a component type central to the first development pattern, the component type for selecting from a plurality of types including at least one of data, message, screen, and workflow; and a first module corresponding to the selected component type and configured for coupling to the first pattern, the first module for developing the definitions of at least one of the components through interaction with a data model

of the development environment providing a persistent state of the application, the operation of the first module being coordinated using the plurality of the predefined steps communicated to the user through the user interface; wherein the developed components are subsequently assembled as the application.

Also disclosed is a method for coordinating the development of an application including a first component having definitions expressed in a structured definition language and a second component having a series of instructions, the components for defining the processing on a device runtime environment of messages communicated over a network between the device and a datasource, the method comprising the steps of: selecting a first development pattern module configured for interaction with a development environment provided by a computer user interface; guiding a user of the user interface through the first pattern with a plurality of predefined steps to coordinate the development of the application components through user input events via the user interface, the first pattern configured for selecting from a plurality of patterns based on a component type central to the first development pattern, the component type for selecting from a plurality of types including at least one of data, message, screen, and workflow; selecting a first module corresponding to the selected component type and configured for coupling to the first pattern; and developing by the first module the definitions of at least one of the components through interaction with a data model of the development environment providing a persistent state of the application, the operation of the first module being coordinated using the plurality of the predefined steps communicated to the user through the user interface; wherein the developed components are subsequently assembled as the application.

Also disclosed is a computer program product for coordinating the development of an application including a first component having definitions expressed in a structured definition language and a second component having a series of instructions, the components for defining the processing on a device runtime environment of messages communicated over a network between the device and a datasource, computer program product comprising: a computer readable medium; a first development pattern module stored on the computer readable medium configured for interaction with a development environment provided by a computer user interface, the first pattern for guiding a user of the user interface with a plurality of predefined steps to coordinate the development of the application components through user input events via the user interface, the first pattern configured for selecting from a plurality of patterns based on a component type central to the first development pattern, the component type for selecting from a plurality of types including at least one of data, message, screen, and workflow; and a first module stored on the computer readable medium corresponding to the selected component type and configured for coupling to the first pattern, the first module for developing the definitions of at least one of the components through interaction with a data model of the development environment providing a persistent state of the application, the operation of the first module being coordinated using the plurality of the predefined steps communicated to the user through the user interface; wherein the developed components are subsequently assembled as the application.

BRIEF DESCRIPTION OF THE DRAWINGS

These and other features will become more apparent in the following detailed description in which reference is made to the appended drawings wherein:

FIG. 1 is a block diagram of a communication network system;

FIG. 2 is a block diagram of a tool for developing and generating the applications of FIG. 1;

FIG. 3 is a block diagram of a component application package of FIG. 1;

FIG. 4 is a block diagram illustrating example components of the application of FIG. 3;

FIG. 5 shows example screens and workflow for a sample component application of FIG. 3;

FIG. 6 is a block diagram of the tool architecture of FIG. 2;

FIG. 7 shows editors of the tool of FIG. 6;

FIG. 8 shows viewers of the tool of FIG. 6;

FIG. 9 shows a method of application validation using the tool of FIG. 6;

FIG. 10 shows a method of application generation using the tool of FIG. 6;

FIG. 11 shows a method of building a deployable application using application of FIG. 10;

FIG. 12 shows a method of deploying the application of FIG. 11;

FIG. 13 shows wizards of the tool of FIG. 6;

FIG. 14 shows an example operation of the wizard patterns of FIG. 13;

FIG. 15 is a further embodiment of the operation of FIG. 14;

FIG. 16 is an example screen of a pattern of FIG. 13;

FIG. 17 is a further embodiment of the screen of FIG. 16; and

FIG. 18 is a further embodiment of the screen of FIG. 16

DESCRIPTION

Network System

Referring to FIG. 1, a network system 10 comprises mobile communication devices 100 for interacting with one or more backend data sources 106 (e.g. a schema based service such as web service or database that provides enterprise services used by an application 105) via a wireless network 102 coupled to an application gateway AG. The devices 100 are devices such as but not limited to mobile telephones, PDAs, two-way pagers, dual-mode communication devices. The network 10 can also have desktop computers 117 coupled through a local area network 119. The devices 100 and desktop computers 117 of the network 10 are hereafter referred to as the devices 100 for the sake of simplicity. It is recognised that the application gateway AG and data sources 106 can be linked via extranets (e.g. the Internet) and/or intranets as is known in the art. The application gateway AG handles request/response messages initiated by the application 105 as well as subscription notifications pushed to the device 100 from the data sources 106. The Application Gateway AG can function as a Data Mapping Server for mediating messaging between a client runtime RE on the device 100 and a backend server of the data sources 106. The Runtime Environment RE is an intelligent container that executes application 105 components and provides common services as needed for execution of the applications 105.

5

The gateway AG can provide for asynchronous messaging for the applications **105** and can integrate and communicate with legacy back-end data sources **106**. The devices **100** transmit and receive the Wireless Component Applications technology or wireless component applications **105**, as further described below, when in communication with the data sources **106**, as well as transmit/receive messaging associated with operation of the applications **105**. The devices **100** can operate as web clients of the data sources **106** through execution of the applications **105** when provisioned on respective runtime environments RE of the devices **100**.

For satisfying the appropriate messaging associated with the applications **105**, the application gateway AG communicates with the data sources **106** through various protocols (such as but not limited to HTTP, SQL, and component API) for exposing relevant business logic (methods) to the applications **105** once provisioned on the devices **100**. The applications **105** can use the business logic of the data sources **106** similarly to calling a method on an object (or a function). It is recognized that the applications **105** can be downloaded/uploaded in relation to data sources **106** via the network **102** and application gateway AG directly to the devices **100**. For example, the application gateway AG is coupled to a provisioning server **108** and a discovery server **110** for providing a mechanism for optimized over-the-air provisioning of the applications **105**, including capabilities for application **105** discovery from the device **100** as listed in a UDDI (for example) registry **112**. The Registry **112** can be part of the Discovery Service implemented by the server **110**, and the registry **112** is used for publishing the applications **105**. The application **105** information in the registry **112** can contain such as but not limited to a Deployment Descriptor DD (contains information such as application **105** name, version, and description) as well as the location of this application **105** in an application repository **114**.

Referring again to FIG. 1, for initialization of the runtime environment RE, the RE receives the gateway AG URL and the gateway AG public key in a MDS **115** service book. The runtime environment RE uses this information to connect to the gateway AG for initial handshaking. Device **100** provisioning or BES **116**, depending on the domain, pushes the MDS **115** service book to the device **100**. It is recognised there could be more than one gateway AG in the network **10**, as desired. Once initialized, access to the applications **105** by the devices **100**, as downloaded/uploaded, can be communicated via the gateway AG directly from the application repository **114**, and/or in association with data source **106** direct access (not shown) to the repository **114**.

Application Design User Interface or Tool **116**

Referring to FIG. 1, the applications **105** can be stored in the repository **114** as a series of packages that can be created by a Studio developer tool **116**, which is employed by developers of the applications **105**. The developer design tool **116** can be a RAD tool used to develop the Wired and/or Wireless Component Application **105** packages (or "applications"). The tool **116** can provide support for a drag-and drop graphical approach for the visual design of application **105** components (see FIG. 4) such as but not limited to screens **402**, data elements **400**, messages **404** and application workflow logic **406**, as further defined below. The application **105** packages are represented as metadata (XML) that can be generated automatically by the tool **116** through an automatic code generation process. This tool **116** can provide for the automatic generated code to include or be otherwise augmented by an industry standard scripting language (e.g. JavaScript™) or other scripting/programming languages known in the art.

6

The availability of the application **105** packages of the repository **114** are published via the discovery service of the server **110** in the registry **112**. It is recognized that there can be more than one repository **114** and associated registries **112** as utilized by the particular network **10** configuration of the application gateway AG and associated data sources **106**.

Referring to FIG. 2, the tool **116** is operated on a computer **201** that can be connected to the network **10** via a network connection interface such as a transceiver **200** coupled via connection **218** to a device infrastructure **204**. The transceiver **200** can be used to upload completed application programs **105** to the repository **114** (see FIG. 1), as well as access the registry **112** and selected data sources **106**. Referring again to FIG. 2, the developer design tool **116** also has a user interface **202**, coupled to the device infrastructure **204** by connection **222**, to interact with a user (not shown). The user interface **202** includes one or more user input devices such as but not limited to a keyboard, a keypad, a trackwheel, a stylus, a mouse, a microphone, and is coupled to a user output device such as a speaker (not shown) and a screen display **206**. If the display **206** is touch sensitive, then the display **206** can also be used as the user input device as controlled by the device infrastructure **204**. The user interface **202** is employed by the user of the tool **116** to coordinate the design of applications **105** using a series of editors **600** and viewers **602** (see FIG. 6), using a plurality of wizards **604** to assist/drive in the workflow of the development process.

Referring again to FIG. 2, operation of the tool computer **201** is enabled by the device infrastructure **204**. The device infrastructure **204** includes a computer processor **208** and the associated memory module **210**. The computer processor **208** manipulates the operation of the network interface **200**, the user interface **202** and the display **206** of the tool **116** by executing related instructions, which are provided by an operating system and application **105** design editors **600**, wizards **604**, dialogs **605** and viewers **602** resident in the memory module **210**. Further, it is recognized that the device infrastructure **204** can include a computer readable storage medium **212** coupled to the processor **208** for providing instructions to the processor **208** and/or to load/design the applications **105** also resident (for example) in the memory module **210**. The computer readable medium **212** can include hardware and/or software such as, by way of example only, magnetic disks, magnetic tape, optically readable medium such as CD/DVD ROMS, and memory cards. In each case, the computer readable medium **212** may take the form of a small disk, floppy diskette, cassette, hard disk drive, solid state memory card, or RAM provided in the memory module **210**. It should be noted that the above listed example computer readable mediums **212** can be used either alone or in combination.

Referring again to FIG. 2, the design tool **116** is operated on the computer **201** as an application development environment for developing the applications **105**. The development methodology of the tool **116** can be based on a visual "drag and drop" system of building the application visual, data, messaging behaviour, and runtime navigation model. The tool **116** can be structured as a set of plug-ins to a generic integrated design environment (IDE) framework, such as but not limited to the Eclipse framework, or the tool **116** can be configured as a complete design framework without using plug-in architecture. For exemplary purposes only, the tool **116** will now be described as a plug-in design environment using the Eclipse framework.

Referring to FIGS. 2 and 6, Eclipse makes provisions for a basic, generic tool **116** environment that can be extended to provide custom editors, wizards, project management and a

host of other functionality. The Eclipse Platform is designed for building integrated development environments (IDEs) that can be used to create applications as diverse as web sites, embedded Java™ programs, C++ programs, and Enterprise JavaBeans™. The navigator view **230** shows files in a user's (e.g. developer) workspace; a text editor section **232** shows the content of a file being worked on by the user of the tool **116** to develop the application **105** and associated components **400,402,404,406** (see FIG. 4) in question; the tasks view section **234** shows a list of to-dos for the user of the tool **116**; and the outline viewer section **236** shows for example a content outline of the application **105** being designed/edited, and/or may augment other views by providing information about the currently selected object such as properties of the object selected in another view. It is recognised that the tool **116** aids the developer in creating and modifying the coded definition content of the components **400,402,404** in the structured definition language (e.g. in XML). Further, the tool **116** also aids the developer in creating, modifying, and validating the interdependencies of the definition content between the components **400,402,404**, such as but not limited to message/data and screen/data relationships. It is also recognised that presentation on the display of wizard **604** and dialog **605** content for use by the developer (during use of the editors **600** and viewers **602**) can be positioned in one of the sections **230,232,234,236** and/or in a dedicated wizard section (not shown), as desired.

The Eclipse Platform is built on a mechanism for discovering, integrating, and running modules called plug-ins (i.e. editors **600** and viewers **602**). When the Eclipse Platform is launched via the UI **202** of the computer **201**, the user is presented with an integrated development environment (IDE) on the display **206** composed of the set of available plug-ins, such as editors **600** and viewers **602**. The various plug-ins to the Eclipse Platform operate on regular files in the user's workspace indicated on the display **206**. The workspace consists of one or more top-level projects, where each project maps to a corresponding user-specified directory in the file system, as stored in the memory **210** (and/or accessible on the network **10**), which is navigated using the navigator **230**. The Eclipse Platform UI paradigm is based on editors, views, and perspectives. From the user's standpoint, a workbench display **206** consists visually of views **602** and editors **600**. Perspectives manifest themselves in the selection and arrangements of editors **600** and views **602** visible on the display **206**. Editors **600** allow the user to open, edit, and save objects. The editors **600** follow an open-save-close lifecycle much like file system based tools. When active, a selected editor **600** can contribute actions to a workbench menu and tool bar. Views **602** provide information about some object that the user is working with in the workbench. A viewer **602** may assist the editor **600** by providing information about the document being edited. For example, viewers **602** can have a simpler lifecycle than editors **600**, whereby modifications made in using a viewer **602** (such as changing a property value) are generally saved immediately, and the changes are reflected immediately in other related parts of the display **206**. It is also recognised that a workbench window of the display **206** can have several separate perspectives, only one of which is visible at any given moment. Each perspective has its own viewers **602** and editors **600** that are arranged (tiled, stacked, or detached) for presentation on the display **206**.

Component Applications **105**

Referring to FIG. 3, the application **105** packages have application elements or artifacts **301** such as but not limited to XML definitions **300**, mappings **302**, application resources

304, and optionally resource bundle(s) **306** for localization support. XML definitions **300** are XML coding of application data **400**, messages **404**, screens **402** components and workflow **406**, part of the raw application **105**. It is recognised that XML syntax is used only as an example of any structured definition language applicable to coding of the applications **105**. Application mapping **302** defines the relationship of content in the application messaging to backend operation of the data sources **106**. The application developer creates the mappings **302** using the tool **116**, whereby the gateway AG utilizes this mapping **302** information during communication of the application **105** request/response messages between the runtime RE, of the devices **100**, and the data sources **106**. The resources **304** are one or more resources (images, sound-bytes, media, etc . . .) that are packaged with the application **105** as static dependencies. For example, resources **304** can be located relative to a resources folder (not shown) such that a particular resource may contain its own relative path to the main folder (e.g. resources/icon.gif, resources/screens/clipart_1.0/happyface.gif, and resources/soundbytes/midi/inthemood.midi). The resource bundles **306** can contain localization information for each language supported by the application **105**. These bundles can be located in a locale folder, for example, and can be named according to the language supported (e.g. locale/lang_en.properties and locale/lang_fr.properties). An example of the elements **301** are given below.

It is recognised that the runtime environment RE of the device **100** is the client-resident container within which the applications **105** are executed on the device **100**. The container manages the application **105** lifecycle on the device **100** (provisioning, execution, deletion, etc.) and is responsible for translating the metadata (XML) representing the application **105** into an efficient executable form on the device **100**. The application **105** metadata is the executable form of the XML definitions **300**, as described above, and is created and maintained by the runtime environment RE. The RE can provide a set of common services to the application **105**, as well as providing support for optional JavaScript™ or other scripting languages. These services include support for such as but not limited to UI control, data persistence and asynchronous client-server messaging. It is recognised that these services could also be incorporated as part of the application **105**, if desired.

Referring to FIG. 4, the component applications **105** are software applications which can have artifacts **301** written, for example, in eXtensible Markup Language (XML) and a subset of ECMAScript. XML and ECMAScript are standards-based languages which allow software developers to develop the component applications **105** in a portable and platform-independent way. A block diagram of the component application **105** comprises the data components **400**, the presentation components **402** and the message components **404**, which are coordinated by workflow components **406** through interaction with the client runtime environment RE of the device **100** (see FIG. 1) once provisioned thereon. The structured definition language (e.g. XML) can be used to construct the components **400, 402, 404** as a series of metadata records, which consist of a number of pre-defined elements representing specific attributes of a resource such that each element can have one or more values. Each metadata schema typically has defined characteristics such as but not limited to; a limited number of elements, a name of each element, and a meaning for each element. Example metadata schemas include such as but not limited to Dublin Core (DC), Anglo-American Cataloging Rules (AACR2), Government Information Locator Service (GILS), Encoded Archives

Description (EAD), IMS Global Learning Consortium (IMS), and Australian Government Locator Service (AGLS). Encoding syntax allows the metadata of the components **400**, **402**, **404** to be processed by the runtime environment RE (see FIG. 1), and encoding schemes include schemes such as but not limited to XML, HTML, XHTML, XSMIL, RDF, Machine Readable Cataloging (MARC), and Multipurpose Internet Mail Extensions (MIME). The client runtime environment RE of the device **100** operates on the metadata descriptors of the components **400**, **402**, **404** to provision an executable version of the application **105**.

Referring again to FIG. 4, the data components **400** define data entities which are used by the component application **105**. Data components **400** define what information is required to describe the data entities, and in what format the information is expressed. For example, the data component **400** may define information such as but not limited to an order which is comprised of a unique identifier for the order which is formatted as a number, a list of items which are formatted as strings, the time the order was created which has a date-time format, the status of the order which is formatted as a string, and a user who placed the order which is formatted according to the definition of another one of the data components **400**.

Referring again to FIG. 4, the message components **404** define the format of messages used by the component application **105** to communicate with external systems such as the web service. For example, one of the message components **404** may describe information such as but not limited to a message for placing an order which includes the unique identifier for the order, the status of the order, and notes associated with the order. It is recognised that data definition content of the components can be shared for data **400** and message **404** components that are linked or otherwise contain similar data definitions.

Referring again to FIG. 4, the presentation components **402** define the appearance and behavior of the component application **105** as it displayed by a user interface of the devices **100**. The presentation components **402** can specify GUI screens and controls, and actions to be executed when the user interacts with the component application **105** using the user interface. For example, the presentation components **402** may define screens, labels, edit boxes, buttons and menus, and actions to be taken when the user types in an edit box or pushes a button. It is recognised that data definition content of the components can be shared for data **400** and presentation **402** components that are linked or otherwise contain similar data definitions.

Referring to FIGS. 1 and 4, it is recognized that in the above described client component application **105** definitions hosting model, the presentation components **402** may vary depending on the client platform and environment of the device **100**. For example, in some cases Web Service consumers do not require a visual presentation. The application definition of the components **400**, **402**, **404**, **406** of the component application **105** can be hosted in the Web Service repository **114** as a package bundle of platform-neutral data **400**, message **404**, workflow **406** component descriptors with a set of platform-specific presentation component **402** descriptors for various predefined client runtimes RE. When the discovery or deployment request message for the application **105** is issued, the client type would be specified as a part of this request message. In order not to duplicate data, message, and workflow metadata while packaging component application **105** for different client platforms of the communication devices **100**, application definitions can be hosted as a bundle of platform-neutral component definitions linked with different

sets of presentation components **402**. For those Web Service consumers, the client application **105** would contain selected presentation components **402** linked with the data **400** and message **404** components through the workflow components **406**.

Referring again to FIG. 4, the workflow components **406** of the component application **105** define processing that occurs when an action is to be performed, such as an action specified by a presentation component **402** as described above, or an action to be performed when messages arrive from the application gateway AG (see FIG. 1). Presentation, workflow and message processing are defined by the workflow components **406**. The workflow components **406** are written as a series of instructions in a programming language (e.g. object oriented programming language) and/or a scripting language, such as but not limited to ECMAScript, and can be (for example) compiled into native code and executed by the runtime environment **206**, as described above. An example of the workflow components **406** may be to assign values to data, manipulate screens, or send the message **105**. As with presentation components, multiple workflow definitions can be created to support capabilities and features that vary among devices **100**. ECMA (European Computer Manufacturers Association) Script is a standard script language, wherein scripts can be referred to as a sequence of instructions that is interpreted or carried out by another program rather than by the computer processor. Some other example of script languages are Perl™, Rexx™, VBScript™, JavaScript™, and Tcl/Tk. The scripting languages, in general, are instructional languages that are used to manipulate, customize, and automate the facilities of an existing system, such as the devices **100**.

Referring to FIG. 4, the application **105** is structured using component architecture such that when the device **100** (see FIG. 1) receives a response message from the application gateway AG containing message data, the appropriate workflow component **406** interprets the data content of the message according to the appropriate message component **404** definitions. The workflow component **406** then processes the data content and inserts the data into the corresponding data component **400** for subsequent storage in the device **100**. Further, if needed, the workflow component **406** also inserts the data into the appropriate presentation component **402** for subsequent display on the display of the device **100**. A further example of the component architecture of the applications **105** is for data input by a user of the device **100**, such as pushing a button or selecting a menu item. The relevant workflow component **406** interprets the input data according to the appropriate presentation component **404** and creates data entities which are defined by the appropriate data components **400**. The workflow component **406** then populates the data components **400** with the input data provided by the user for subsequent storage in the device **100**. Further, the workflow component **406** also inserts the input data into the appropriate message component **404** for subsequent sending of the input data as data entities to the data source **106**, web service for example, as defined by the message component **404**.

The following example, referring to FIG. 4, shows how a Web Services client application **105** could be expressed using a structured definition language, such as but not limited to XML, and a platform neutral scripting/programming language, such as but not limited to ECMAScript, with defined components conforming with the following Document Type Definition (DTD):

```

<!ELEMENT wcApp (desc?, iconUrl?, res*, wcData*,
wcMsg*, style*, wcScr*, wcFlow)>
<!-- ATTLIST wcApp
  name CDATA #REQUIRED
  title CDATA #IMPLIED
  vendor CDATA #IMPLIED
  version CDATA #IMPLIED
  transportKey CDATA #IMPLIED
  installNotifURL CDATA #IMPLIED
  registerURL CDATA #IMPLIED
-->
<!-- ELEMENT desc (#PCDATA)>
<!-- ELEMENT iconUrl (#PCDATA)>
<!-- ELEMENT res (#PCDATA)>
<!-- ATTLIST res
  name CDATA #REQUIRED
  url CDATA #REQUIRED
  type (xml | image | sound | any) #REQUIRED
  deferred (true | false) "false"
-->
Example Data Component 400
<!-- ELEMENT wcData (dfield+)>
<!-- ATTLIST wcData
  name CDATA #REQUIRED
  persisted (true | false) "true"
-->
<!-- ELEMENT dfield (#PCDATA)>
<!-- ATTLIST dfield
  name CDATA #REQUIRED
  type (String | Number | Boolean | Date | Any) "Any"
  array (true | false) "false"
  cmp (true | false) "false"
  cmpName CDATA #IMPLIED
  key (0 | 1 | 2) "0"
-->
Example Message Component 404
<!-- ELEMENT wcMsg (mfield*)>
<!-- ATTLIST wcMsg
  name CDATA #REQUIRED
  mapping CDATA #IMPLIED
-->
<!-- ATTLIST wcMsg
  pblock CDATA #IMPLIED
-->
<!-- ELEMENT mfield (#PCDATA)>
<!-- ATTLIST mfield
  name CDATA #REQUIRED
  type (String | Number | Boolean | Date | Array | XML) #IMPLIED
  mapping CDATA #IMPLIED
-->

```

EXAMPLE PRESENTATION COMPONENTS 402

The example Presentation Components 402 has been submitting as a text file entitled "11078430₁₃.1.txt" in a computer program listing appendix on a compact disc. The information and/or data contained therein is incorporated by reference in its entirety.

Example Workflow Component 406

```

<!-- ELEMENT wcFlow (pblock+)>
<!-- ELEMENT pblock (#PCDATA)>
<!-- ATTLIST pblock
  id CDATA #REQUIRED
  param CDATA #IMPLIED
-->

```

The example component application program 105 displayed in FIG. 5 is represented in XML and mEScript as submitted as a text file entitled "11078430_2.txt" in a com-

puter program listing appendix on a compact disc, including data components 400 as "wcData", message components 404 as "wcMsg", presentation components 402 as "wcScr" and workflow components 406 as "wcFlow" for processing the other components 400, 402, 404. The information and/or data contained 11078430_2.txt is incorporated by reference in its entirety.

As given above, the XML elements define the example component application 105 including a wcApp element, a wcData element, a wcMsg element, a wcSrc element, and a wcFlow element. Referring to FIG. 4, the wcApp element is a top-level element which defines the component application 105. The wcData element defines the example data component 400, which is comprised of a group of named, typed fields. The wcMsg element defines the example message component 404, which similarly defines a group of named, typed fields. The wcSrc element defines the example presentation component 402. The example presentation component 402 is a label, a separator, an image, a button, an edit field, a text area, a single-selection list, a multi-selection list, a drop-list, a checkbox, a radio button, or a screen containing a group of other presentation components 402. The presentation components 402 included in the example component application 105 define a login screen 500, a specials screen 502, a delivery information screen 504, an order list screen 508, and an order status screen 506. These screens would be presented on the user interface of the device 100. The wcFlow element defines the example workflow components 406. The pblock attributes of the XML elements specify a pblock element nested in the wcFlow element. Each pblock element comprises script which defines part of the workflow of the component application 105. The script is written in ECMAScript by way of example only.

In order to define the behavior of the component application 105, the workflow components 406 use ECMAScript to reference and manipulate the data components 400, the presentation components 402, and the message components 404. Workflow components 406 can also reference external object types, which allow actions to be performed on the components defined in the component application 105. For example, a wcMsg type allows a message defined by a message component 404 to be evaluated to determine whether mandatory fields have been supplied, and to be sent to an external system such as the web service 106. A wcData type allows the size of collections of data entities defined by data components 400 to be determined, and allows data entities to be deleted. A wcScr type allows a presentation component 402 to be displayed to the user. Similarly, a special dialog external object allows a message to be displayed to the user on the user interface of the device 100. The message components 404 relay the required data for the input and output of the messages of the application 105. The corresponding data components 400 coordinate the storage of the data in memory of the device 100 for subsequent presentation on the user interface by the presentation components 402. The workflow components 406 coordinate the transfer of data between the data 400, presentation 402, and message 404 components. The workflow components 406 are written as a series of instructions, such as but not limited to ECMAScript, which is described above.

The above described component based application 105 architecture can result in component applications 105 in which the user-interface of the device 100 and the definition of the data are decoupled. This decoupling allows for modification of any component 400, 402, 404, 406 in the component application 105 while facilitating insubstantial changes to other components 400, 402, 404, 406 in the application 105, and thus can facilitate maintenance of the component

applications **105**, including modification and updating of the component applications **105** on the device **100**.

Designer Tool **116** Architecture

FIG. **6** illustrates the overall designer tool **116** structure for designing component applications **105**. The designer tool **116** interface (UI **202** and display **206**—see FIG. **2**) is primarily a user facing module **601** collection of graphical and text editors **600**, viewers **602**, dialogs **605** and wizards **604**. The large majority of external interactions are accomplished through one or more of these editors **600**, with the developer/user, using a system of drag and drop editing and wizard driven elaboration. The secondary and non-user facing system interface is that of the “Backend”, whereby the tool **116** connects to and digests datasource **106** services such as Web Services and SQL Databases. As described above, the tool **116** can be built on the Eclipse platform, whereby the user interface system components can be such as but not limited to components of editors **600**, viewers **602**, dialogs (not shown) and wizards **604**, which are plug-in modules **601** that extend Eclipse classes and utilize the Eclipse framework, for example. As shown, the tool **116** communicates with backend data sources **106** and UDDI repositories **114** and registries **112**. These external systems **106**, **112**, **114** may not be part of the tool **116** but are shown for completeness.

The tool **116** has a UI Layer **606** composed mainly of the editors **600** and viewers **602**, which are assisted through the workflow wizards **605**. The layer **606** has access to an extensive widget set and graphics library known as the Standard Widget Toolkit (SWT), for Eclipse. The UI layer **606** modules **601** can also make use of a higher-level toolkit called JFace that contains standard viewer classes such as lists, trees and tables and an action framework used to add commands to menus and toolbars. The tool **116** can also use a Graphical Editing Framework (GEF) to implement diagramming editors such as the Workflow Editor **702** and the Relationship Editor **704** (see FIG. **7**). The UI layer **606** modules **601** can follow the Model-View-Controller design pattern where each module **601** is both a view and a controller. Data models **608,610** represents the persistent state of the application **105** and are implemented in the data model layer **612** the tool **116** architecture. The separation of the layers **606**, **612** keeps presentation specific information in the various views and provides for multiple UI modules **601** (e.g. editors **600** and viewers **602**) to respond to data model **608,610** changes. Operation by the developer of the editors **600** and viewers **602** on the display **202** (see FIG. **2**) is assisted by the wizards **604** for guiding the development of the application **105**. The application development patterns or development guides **948** (see FIG. **13**). The patterns fall into one of the following general categories, such as but not limited to: Recommendation patterns **654**; Development approach patterns **650**; Validation patterns **660**; Messaging patterns **658**; Screen patterns **656**; and Script patterns **652** as further described below in relation to FIG. **13**.

The tool **116** data models **608,610** can be based on the Eclipse Modeling Framework (EMF). EMF is a framework and code generation facility. The framework provides model **608,610** change notification, persistence support and an efficient reflective API for manipulating EMF objects generically. The code generation facility is used to generate the model **608,610** implementation and create adapters to connect the model layer **612** with the user interface modules **601** of the UI layer **606**.

A tool **116** service layer **614** provides facilities for the UI layer **606** such as validation **620**, localization **624**, generation **622**, build **626** and deployment **628**, further described below.

The tool **116** can make use of the Eclipse extension point mechanism to load additional plug-ins for two types of services: backend connectors **616** and device skin managers **618** with associated presentation environments **630**.

The backend connector **616** defines an Eclipse extension point to provide for the tool **116** to communicate with or otherwise obtain information about different backend data sources **106**, in order to obtain the message format of the selected data source **106**. The backend connector **616** can be used as an interface to connect to and to investigate backend datasource **106** services such as Web Services and SQL Databases. The backend connector **616** facilitates building a suitable application message and data set to permit communication with these services from the application **105** when running on the device. The backend connector **616** can support the access to multiple different types of data sources **106**, such as but not limited to exposing respective direct communication interfaces through a communication connector based architecture. At runtime the tool **116** reads the plug-in registry to add contributed backend extensions to the set of backend connectors **616**, such as but not limited to connectors for Web Services.

The Backend Connector **616** can be responsible for such as but not limited to: connecting to a selected one (or more) of the backend data sources **106** (e.g. WebService, Database); providing an interface for accessing the description of the backend data source **106** (e.g. messages, operations, datatypes); and/or providing for the identification of Notification services (those which push notifications over the network **10** to the device **100**—see FIG. **1**). The Backend Connector **616** can provide an interface to the backend datasource **106** (e.g. a web service, SQL Database or other) for access of the data source description, and can provide a level of abstraction between implementation specific details of the backend messaging and generic messaging descriptions **302** maintained by the Design Time Data Model **608**. For example, the Backend Connector **616** can be used to generate appropriate messaging **404** and data **400** component sets for the application **105**, and is used by the Model Validator **620** as part of validation tasks to verify the sanity of existing message mapping **302** relationships in the application **105** under development. For example, the backend connector **616** can be implemented as an interface using an API call as the protocol to access the underlying backend data source **106** (e.g. using a WSDL Interface for WebServices).

The device skin manager **618** defines an Eclipse extension point, for example, to allow the tool **116** to emulate different devices **100** (see FIG. **1**), such that the look and feel of different target devices **100** (of the application **105**) can be specified. At runtime the tool **116** reads the plug-in registry to add contributed skin extensions or presentation environments **630** to the set of device environments **630** coordinated by the manager **618**, such as but not limited to environments **630** for a generic BlackBerry™ or other device **100**. The Skin Manager **618** is used by the Testing/Preview viewer **806** to load visual elements (as defined by the screen component **402** of the data model **608,610**) that look appropriate for the device **100** that is being emulated, i.e. elements that are compatible with the specified environment **630**. Different skins or presentation environments/formats **630** are “pluggable” into the manager **618** of the tool **116**, meaning that third parties can implement their own presentation environments **630** by creating new unique SkinIds (an Eclipse extension point), for example, and implementing an appropriate interface to create instances of the screen elements supported by the runtime environment RE of the emulated device **100**. In order to load a new presentation environment **630**, the Testing/Preview

viewer **806** first asks the Manager **618** for an instance of the specified environment **630**. The Manager **618** then instantiates the environment **630** and the Testing/Preview viewer **806** uses the specified environment **6320** to construct the screen elements according to the screen components **402** of the model **608,610**. For example, the presentation environments **630** (e.g. SkinPlugins) are identified to the SkinManager **618** through a custom Eclipse extension point using the Eclipse framework.

Referring to FIG. 6, the UI Layer **606** is comprised of the set of editors **600**, viewers **602**, wizards **604** and dialogs **605**. The UI Layer **606** uses the Model-View-Controller (MVC) pattern where each UI module **601** is both a View and a Controller. UI Layer modules **601** interact with the data models **608,610** with some related control logic as defined by the MVC pattern. The editors **600** are modules **601** that do not commit model **608,610** changes until the user of the tool **116** chooses to "Save" them. An example of an editor **600** is the Script Editor **706** (see FIG. 7), further described below. Viewers **602** are modules **601** that commit their changes to the model **608,612** immediately when the user makes them. An example of a viewer **602** is the Navigator (Project View) **802** (see FIG. 8). Wizards **604** are modules **601** that are step-driven by a series of one or more dialogs **605**, wherein each dialog **605** gathers certain information from the user of the tool **116** via the user interface **202** (see FIG. 2). No changes are applied to the design time model **608** using the wizards **604** until the user of the tool **116** selects a confirmation button like a "Finish". It is recognised in the example plug-in design tool **116** environment, modules **610** can extend two types of interfaces: Eclipse extension points and extension point interfaces. Extension points declare a unique package or plug-in already defined in the system as the entry point for functional extension, e.g. an editor **600**, wizard **604** or project. Extension point interfaces allow the tool **116** to define its own plugin interfaces, e.g. for skins **618** and backend **616** connectors.

Referring again to FIG. 6, modules **601** (primarily Editors **600** and Viewers **602**) in the tool **116** are observers of the data models **608,610** and are used to interact or otherwise test and modify the data models **608,610** of the application (e.g. components **400, 402, 404, 406**—see FIG. 4) in question. When the data model **608,610** changes, the models **608,610** are notified and respond by updating the presentation of the application **105**. The tool **116** uses the Eclipse Modeling Framework (EMF), for example, to connect the Eclipse UI framework to the tool **116** data model **608,610**, whereby the modules **601** can use the standard Eclipse interfaces to provide the information to display and edit an object on the display **206** (see FIG. 2). In general, the EMF framework implements these standard interfaces and adapt calls to these interfaces by calling on generated adapters that know how to access the data model **608,610** residing in memory **210**. The design time Data Model **608** is the current version of the application **105** in development and is accessed by the users employing the modules **601** to interact with the associated data of the model **608**. Modules **601** can also trigger validation actions on the Design Time Data Model **608**. Modules **601** can also cause some or all of the application **105** to be generated from the Design Time Data Model **608** resident in memory **210**. In general, the Design Time Data Model **608** accepts a set of commands via the UI **202** (see FIG. 2) that affect the state of the model **608**, and in response may generate a set of events. Each module **601** (editor **600** and viewer **602**) described includes the set of commands and the events that affect the module **601** and data model **608** pairing.

Referring to FIGS. 6 and 8, the Runtime Data Model **610** represents the state of an emulated application **105** under

development by the tool **116**, using as a basis the contents of the design time data model **608**. The runtime data model **610** stores values for the following major items, such as but not limited to: □Data Components **400** (see FIG. 4); □Global Variables; Message Components **404**; □Resources **304,306** (see FIG. 3); □Screen Components **402** and □Styles. The Runtime Data Model **610** collaborates with the Design Time Data Model **608** and a Testing/Preview viewer **806** during emulation of application **105** for testing and preview purposes (for example). The viewer **806** also collaborates with the skin manager **616** for emulating the runtime data model **610** for a specified device **100** type. The Runtime Data Model **610** also notifies, through a bridge **613**, the viewer **806** as well as any other modules **600** of the UI layer **606** associated with changes made to the model **610**. For example, an API call can be used as a notifier for the associated modules **601** when the state of the model **610** has changed.

Referring to FIGS. 6 and 4, the Design Time Data Model **608** represents the state of an application **105** development project and interacts with the modules **601** of the UI layer **606** by notifying modules **601** when the state of the model **608** has changed as well as saving and loading objects from storage **210**. The model's **608** primary responsibility is to define the applications **105** including such as but not limited to the following items: Data Component **400** Definitions; Global Variable Definitions; Message Component **404** Definitions; Resource **304,306** Definitions; Screen Component **402** Definitions; Scripts **406**; Style Definitions and Backend data source **106** Mapping **302** Descriptors. The Design Time Data Model **608** responds to commands of each editor **600**, viewer **602**. The Design Time Data Model **608** also fires events to modules **601** in response to changes in the model **608**, as well as collaborating/communicating with the other modules **601** (module **601**-module **601** interaction) by notifying respective modules **601** when the data model **608** has changed. The data model **608** depends on an interface in order to serialize model **608** content retrieval and storage to and from the memory **210**.

The following describes the mechanism used by the tool **116** editors **600** and viewers **602** to interact with the data model **608**. The EMF.Edit framework is an optional framework provided by the Eclipse framework. The tool **116** can use the EMF.Edit framework and generated code (for example) as a bridge or coupling **613** between the Eclipse UI framework and the tool data model **608**. Following the Model-View-Controller pattern, the editors **600** and viewers **602** do not know about the model **608** directly but rely on interfaces to provide the information needed to display and edit the data in the model **608**.

In general, for example a tree viewer uses a TreeContentProvider and LabelProvider interface to query the structure of the tree and get text and icons for each node in the tree respectively. Table viewers and list viewers work in a similar way but use the structured ContentProvider and LabelProvider interfaces. Each class in the data model **608** is a change notifier, that is, anytime an attribute or reference is changed an event is fired. In EMF, for example, a notification observer is called an adapter because not only does it observe state changes but it can extend the behaviour of the class it is attached to (without subclassing) by supporting additional interfaces. An adapter is attached to a model object by an adapter factory. An adapter factory is asked to adapt an object with an extension of a particular type. The adapter factory is responsible for creating the adapter or returning an existing one, the model object does not know about adapting itself. The tool **116** uses EMF to generate a set of adapters for the data model **608** called item providers. Each item provider is

an adapter that implements provider interfaces to extend the behaviour of the model object so it can be viewed and edited and at the same time is a notification observer that can pass on state changes to listening views. The tool 116 connects the editors 600 and viewers 602 to the data model 608 by configuring the editors 600 and viewers 602 with one or more EMF.Edit classes, for example. Each EMF.Edit class supports an Eclipse UI provider interface. The EMF.Edit class implements an interface call by delegating to an adapter factory. The adapter factory then returns a generated adapter (an item provider) that knows how to access the data model 608. When the state of the model 608 changes the same adapters are used to update the viewers 602 and editors 600.

The following commands are example commands that can affect other related modules 601 of the UI layer 606: ComponentAdded—a component (i.e. Screen, Data etc.) has been added to the application 105; ComponentRemoved—a component has been removed from the application 105; ComponentRenamed—a component has been renamed; NavigationControlChanged—a button or menu item has been added, removed or had its properties changed on a screen (e.g. component 402) of the application 105; DataBindingChanged—a data-bound control (of a message 404, data 400 and/or presentation 402 component) has been added, removed or had its properties changed on a screen; ScreenParameterListChanged—a parameter has been added or removed from one of the screen components 402; FieldMappingChanged—a message level, field level or prototype mapping has changed; MessageContainmentChanged—a containment relationship has changed; MessageFieldChanged—a message field has been added, removed or had its properties changed for a message 404 and/or a screen 402 component; DataFieldChanged—a data field has been added, removed or had its properties changed from a message 404, data 400 and/or presentation 402 component; NavigationChanged—a script that may contain navigation code has changed of a workflow component 406; LocalizedStringChanged—a literal string has been added, removed or changed and ExitCodeChanged—Exit code has been added or removed from a script of the workflow component 406.

The model validation 620 of the service layer 614 provides facilities for the UI layer 606 such as validating the design time data model 608. The ModelValidator 620 is used to check that the Design Time Data Model 608 representation of application 105 messages is in line with the backend data source 106 presentation of messaging operations. The Model Validator 620 can be responsible to validate the model 608 representation of the application 105 to be generated, for example such as but not limited to elements of: workflow sanity of the workflow component 406; consistency of parameters and field level mappings of the components 400, 402, 404, 406; screen control mappings and screen refresh messages of the screen components 402; message and/or data duplications inter and intra component 400, 402, 404, 406. Another function of the validation 620 can be to validate the model's 608 representation of backend data source 106 messaging relationships. In order to achieve its responsibilities, the validator collaborates with the Design Time Data Model 608, an application generator 622 and the backend connector 616. Requests to the Model Validator 620 to validate the model 608 (or a portion of the model 608—on demand) are made through the application generator 622, using the tool user interface 202 for example, via a Validate Model interface (not shown) connecting the generator 622 to the validator 620. The Model Validator 620 in turn utilizes as part of the validation task the Design Time Data Model 608, which con-

tains both the application 105 and mapping file meta model information, as well as the backend connector 616, which supports the interface to the backend data sources 106.

Referring to FIGS. 6 and 9, a model 608 validation sequence 900 is shown. First the validator 620 is requested 901 to validate the model 608. The validator obtains 902 all components 400, 402, 404, 406 from the data model 608 and in turn validates 903 the contents of each component 400, 402, 404, 406. The validator 620 then gets 904 the backend mappings 302 from the data model 608 and then obtains 905 mapping information of the backend data sources 106. A comparison is then made 906 in order to validate 907 the model 608.

Referring again to FIG. 6, the localization Service 624 has responsibilities such as but not limited to: supporting a build time localization of user visible strings; supporting additional localization settings (e.g. default time & date display format, default number display format, display currency format, etc); and creating the resource bundle files 306 (and resources 304) that can be used during preparation of the deployable application 105 (e.g. an application jar file) by a BuildService 626. For example, the localization service 624 can be implemented as a resource module for collecting resources 304, 306 that are resident in the design time data model 608 for inclusion in the deployable application 105. The JAR file can be a file that contains the class, image, and sound files for the application gathered into a single file and compressed for efficient downloading to the device 100. The Localization Service 624 is used by the application Generator 622 to produce the language specific resource bundles 306, for example. The BuildService 626 implements preparation of the resource bundles 306 and packaging the resource bundles 306 with the deployable application 105. The Localization Service 624 interacts (provides an interface) with the tool editors 600 and viewers 602 for setting or otherwise manipulating language strings and locale settings of the application 105.

Referring to FIG. 6, the application Generator 622 can be responsible for, such as but not limited to: generation of the application XML from the components 400, 402, 404; generation of mapping 302 descriptors; optimizing field ordering of the component 400, 402, 404 descriptors; and generation of dependencies and script transformation as desired for storage in the memory 210. The application Generator 622 collaborates with the Design Time Data Model 608 to obtain the content of the developed components 400, 402, 404 comprising the application 105. The application Generator 622 utilizes the Model Validator 620 to check that both the application 105 definitions (of the components 400, 402, 404, 406) and mapping 302 description information are correct. The application Generator 620 then produces the XML code, with inclusions and/or augmentations of the script of the workflow components 406, and mapping 302 file descriptor from relationships held in the Design Time Data Model 608. The application Generator 622 uses the Localization Service 624 to produce the language resource bundles 306, through for example a Resource Bundles interface (not shown). The application Generator 622 generation process is kicked off through a Generate application interface accessed by the developer using the UI 202 of the tool 116 (i.e. by user input events such as mouse clicks and/or key presses). It is recognised that the generator 622 can be configured as a collection of modules, such as but not limited to a code module for generating the XML 301 (which may include associated script) and a mappings module for generating the mapping 302 descriptors.

Referring to FIGS. 6 and 10, a sequence 1000 of generating the application artifacts 301 for the application 105, including

the generation of mapping 302 files is shown. At step 1001 validate model 608 is performed by the validator 620. At step 1002 the application language descriptors (e.g. XML) 300 (which may include associated script) are generated by the generator 622 by getting 1003 the components 400,402,404, 406 from the model 608 and generating 1004 the corresponding XML 300. At step 1005 the backend mapping 302 file descriptors are generated by the generator 622 by obtaining 1006 the mappings from the data model 608 and then generating 1007 the backend mapping descriptors. At step 1008 the resource bundles 306 (and resources 304) are prepared by the localization service 624 to add to the application 105, as described above with reference to FIG. 3. The generated artifacts 310 of the application 105 are stored in the memory 210.

Referring again to FIGS. 2 and 6, the tool 116 can be a utility that runs on a single desktop computer 201. The tool 116 provides the main developer capability, which encapsulates the development, preview, validation and generation functions for application 105 development. However, it is recognised that a Build service 626 and/or a security service 632 can be packaged as a separate entity to permit the “home-grown” developer to create applications manually, separate from the other application development of the tool 116, and still utilize the preparation and security aspects of the deployable application 105 package (e.g. jar). It is also recognised that a Deployment service 628 can also be packaged separately to permit the “home-grown” developer to generate and deploy the appropriate application descriptor file. Accordingly, the tool 116 can make use of external build 626 and deployment 628 service utilities, internal build 626 and deployment 628 services (as shown in FIG. 6), or other configurations thereof as evident to a person skilled in the art.

Referring to FIGS. 3 and 6, the Build Service 626 provides an interface for building deployable form of the application 105 and is responsible for, such as but not limited to: generating a manifest file and generating the deployable application 105 jar file. The Build Service 626 uses available application XML 300 (which may include associated script), mapping descriptor files 302 and resource bundles 306 (and resources 304) as described above. The availability of these application 105 elements may be done either through the tool 116 application Generator 622, or manually in the case of the homegrown development approach using an external Build Service 626. The Security Service 632 is used to sign the manifest that contains unique information about the application 105. Finally, the Build Service 626 produces the deployable application 105 jar unit, including all artifacts and the signed manifest file. As noted above, the Build Service 626 can be packaged as a separate utility to the tool 116 and used by the tool 116 for packaging of the deployable application jar file.

Referring to FIGS. 6 and 11, the sequence 1100 of running the build service 626 to generate a deployable application 105 (e.g. as an application jar file) is shown. At step 1101 the developer initiates the build service 626 as either an internal (to the tool 116) or external as a separate utility once the application elements/artifacts 301 (see FIG. 3) have been generated by the application generator 622. At step 1102 the service 626 retrieves the available mapping 302 file descriptor and at step 1103 retrieves the available application XML 300 (which may include associated script). At step 1104 the service 626 retrieves the resources 304,306 and then generates 1105 the manifest file. At step 1106 the manifest is signed and then the application jar file is generated 1107. The deployable

application 105 is then made available (e.g. stored in the memory 210) for eventual deployment by the deployment service 628.

Referring to FIG. 6, the Security Service 532 is employed to sign the manifest jar with a digest produced over the jar file contents and can have two main responsibilities, for example. First and foremost, the Security Service can be used to generate an IDE (integrated design environment) Tag that can be included in every application 105 jar file. Secondly, the Security Service 632 can provide a means to initialize a security infrastructure of the tool 116. The Build Service 626 interacts with the Security Service 632 at build time to produce the IDE Tag that can be part of every deployable application 105 jar manifest. The Security Service 632 can also interact with a build configuration element (not shown—potentially external to the service 632) for permitting configuration of the security service, such as but not limited to; initial setup of the signed certificate; for generation of new keys, generation of a key request, and installation of a signed certificate as is known in the art.

Referring again to FIG. 6, the Deployment Service 628 connects to the UDDI repository 114 to install/publish the generated application descriptor file, and can be responsible for generating the deployment descriptor of the application 105. The Deployment Service 628 uses the available application 105 jar file at deployment time. Although the Deployment Service 628 does not install the application 105 jar file, the service 628 introspects the jar file to determine what languages are supported (e.g. represented in the resource bundles 306). This information can be added to the descriptor file.

Referring to FIGS. 6 and 12, a sequence 1200 of deploying the application 105 to the UDDI (for example) repositories 114 is shown. At step 1201 the developer initiates the deployment service 628 as either an internal (to the tool 116) or external as a separate utility. At step 1202 the service 628 retrieves the available application jar. At step 1203 the service 628 generates the deployment descriptor of the application 105 and at step 1204 proceeds to publish the deployment descriptor through a discovery service 634 of the repository 114.

Referring to FIG. 7, the distribution of editors 600 in to Eclipse plug-ins (by way of example only) is shown. Tool editors 600 fall broadly into two categories, such as but not limited to the categories of: Text Editors 700 implement standard line based editing functionality and Graphical Editing Framework (GEF) Editors 701 that provide an edit space in which to draw objects. A GEF Editor 701 in the context of the tool 116 can contain a palette and a canvas, as is known in the art. The user can drop nodes (entities) from the palette onto the canvas and add connections (relationships) between them, so as to for example define the content and inter-relationships of the XML coding of the components 400, 402, 404, 406 (see FIG. 4). It is recognised that the editors 600 and viewers 602 are used to create and modify definitions contained in the components 400,402,404,406 s well as to create and modify the interdependencies of the definitions between the components (e.g. data-data, data-screen, message-data, screen-data, data-message) as further discussed below. It is recognised that the viewers 602 and editors 600 can be any combination of text based and/or graphical based modules 601, as desired.

Editors 600

For Editor 600 and Data Model 608 decoupling, the editor 600 does not know about the data model 608 directly. The editor 600 relies on a UI provider interface (of Eclipse) to get the information needed to render the object under edit. The

editor **600** can be configured with an EMF core object, for example when using the Eclipse platform) that implements a UI provider interface. e.g. ContentProvider, LabelProvider. The EMF provider object adapts UI calls by delegating to a generated adapter (ItemProvider) that knows how to access the data model **608**.

In general, the editor **600** creates a command to change the model **608** so that the change can be undone through an undo API (not shown). These changes can be assisted by an appropriate wizard **604** for the development task at hand. The editor **600** can be configured with an EMF core object called an editing domain that maintains a command stack. The editing domain uses the adapter factory to find an adapter that can create the command. The generated adapter class (an ItemProvider) creates the command. The editor **600** executes the command by using the command stack. Further, using the Eclipse framework as an example, EMF models **608** are change notifiers. Because the ItemProvider is a notification observer it is notified when the data model **608** changes. The ItemProvider in turn notifies the Provider. The Provider tells the Editor **600** and PropertySheet to refresh after a change notification.

Script Editor **706**

The script editor is a constrained text editor for writing the commands (e.g. JavaScript™) of the application **105** components, such as but not limited to the workflow component **406**—see FIG. 4. Some syntax such as creating functions can be restricted where it is not user-definable in the component application **105**. Example commands editable by the script editor **706** can include commands such as but not limited to SaveScript which is used when the user saves a script of the application **105**. SaveScript can trigger the data model **608** commands of NavigationChanged, LocalizedStringChanged and ExitCodeChanged, if successful. Example input events of the script editor **706** can include events such as but not limited to: ComponentRemoved whereby if the component (**400**, **402**, **404**, **406**) removed affects input parameters to the script or globals used by the script, the script editor **706** prompts the user of the tool **116** that the modified script is invalid; and ComponentRenamed which has the same interest as ComponentRemoved. An example interface of the script editor **706** extends the org.eclipse.ui.editors extension point of the Eclipse framework by implementing a subclass of the org.eclipse.ui.editors.texteditors hierarchy. The tool **116** coordinated the creation and/or modification of scripts in the (e.g. workflow **406**) components as well as the inter-relation of the created/modified script affecting other associated components of the application **105**.

Screen Editor **708**

The screen editor **708** is responsible for facilitating the user of the tool **116** to define and laying out the structured definition language code (e.g. XML) in the screen components **402** of the application **105** associated with display of data on the device **100**. The interaction of the Developer with the editor **708** can be assisted or otherwise driven by the screen patterns **656** (see FIG. 13), which can include patterns **656** such as but not limited to slide show **656a**, form **656b**, access device data **656c**, conditional screen controls **656d** and data sheet **656e**, as further described below. UI controls for inclusion in the screen components **402** can be dropped onto a form canvas (not shown) in the editor section **232** of the display (see FIG. 206). Control properties including event handlers can also be edited by the screen editor **708**.

Example commands editable by the screen editor **708** can include commands such as but not limited to: ButtonChange which is sent (to the data model **608**) when the developer

changes a button control, this command triggers NavigationControlChange of the data model **608** if successful; MenuItemChange which is sent when the developer changes a menu item, this command triggers NavigationControlChange of the data model **608** if successful; ChangeScript which is sent when the developer changes a script, this command triggers NavigationControlChanged of the data model **608** if successful; QueryMessages which is sent when the developer needs a list of available messages that screen of the application **105** may send or refresh on, and returns a list of available messages; QueryData which is sent when the developer needs a list of available data objects to bind controls to, and returns a list of available data; NonNavigationControlChange which is sent when a control that does not affect navigation (e.g. label, text field) has been modified; and DataBindingChange which is sent when a databinding has changed, this command triggers DataBindingChanged and ScreenParameterListChanged of the data model **608** if successful. Example input events of the screen editor **708** can include events such as but not limited to: ComponentRemoved whereby the screen developer (user of the tool **116**) checks to see if the component is a message the associated screen component **402** is using for navigation, a Data object that the screen component **402** has controls bound to or a script (e.g. workflow component **406**) that handles a screen event of the screen component **402**; ComponentRenamed has the same interest as ComponentRemoved; ScreenParameterListChanged modifies the screen component **402** such as if a parameter that was in use has been changed, the screen component **402** must either adjust that parameter or warn the developer that those dependencies are no longer valid and must be changed; MessageFieldChanged whereby the Screen developer checks to see if the field in question is in use by the screen component **402**; and DataFieldChanged whereby the Screen developer checks to see if any controls were bound to the field(s) that have changed and warns the developer appropriately.

An example interface of the screen editor **708** extends org.eclipse.ui.editors of the Eclipse framework using the GEF GraphicalEditor and/or a VE editor. The tool **116** coordinates the creation and/or modification of screen definitions in the (e.g. screen **402**) components as well as the inter-relation of the created/modified screen definitions (and associated data definitions) affecting other associated components of the application **105**.

Data Editor **710**

The data editor **710** is responsible for facilitating the user of the tool **116** to create and modify the structured definition language code (e.g. XML) in the data components **400** (and possibly screen **402** and message **404** components) of the application **105** by providing the developer the ability to edit a Data Component **400** fields and properties. The interaction of the Developer with the editor **710** can be assisted or otherwise driven in connection with patterns **684** (see FIG. 13) that include a data component **400** aspect, as further described below. New Data objects can be created from scratch, by prototyping existing Data objects or based on data definition mappings to Message objects in message components **404**.

Example commands editable by the data editor **710** can include commands such as but not limited to: AddRemoveFields which is sent when the developer adds or removes a field from a Data object definition, this command triggers DataFieldChanged of the data model **608** if successful; LinkToExternalData which is sent when the developer links a data object definition to an external (to the application **105**) Data

23

object, such as but not limited to a Calendar or Contacts data object, this command triggers DataFieldChanged of the data model **608** if successful.

Example input events of the data editor **710** can include events such as but not limited to: ComponentRemoved whereby the screen developer (user of the tool **116**) checks to see if the object that was removed was related to the message through prototyping or containment, then the developer can adjust the fields contained in the Data object affected; and ComponentRenamed has the same interest as in ComponentRemoved.

An example interface of the screen editor **708** extends org.eclipse.ui.editors using the GEF GraphicalEditor. The tool **116** coordinates the creation and/or modification of data definitions in the (e.g. data **400**) components as well as the inter-relation of the created/modified data definitions (and associated screen/message definitions) affecting other associated components of the application **105**.

Message Editor **712**

The message editor **712** is responsible for facilitating the user of the tool **116** to create and modify the structured definition language code (e.g. XML) in the message components **404** of the application **105**. The interaction of the Developer with the editor **712** can be assisted or otherwise driven by the screen patterns **658** (see FIG. **13**), which can include patterns **658** such as but not limited to message content target **658a** and notification builder **658b**, as further described below. The message designer provides for the developer to create and edit component messages that are sent to and arrive from the backend data sources **106** (in relation to the device **100**). These messages can include both request/response pairs as well as subscribe/notify/unsubscribe notification messages. Message definitions can be created by prototyping existing messages or by templating based on back-end services of the data sources **106** such as WSDL and JDBC/SQL.

Example commands editable by the message editor **712** can include commands such as but not limited to: AddRemoveFields which is sent when the developer adds or removes field from a message in a message component **404**. Example input events of the message editor **712** can include events such as but not limited to: ComponentRemoved whereby the screen developer (user of the tool **116**) checks to see if a message that this message definition prototypes or contains has been removed, then the view must be updated; ComponentRenamed has the same interest as ComponentRemoved; and FieldMappingChanged whereby the screen developer (user of the tool **116**) checks to see if the field mapping effects the message definitions being edited, then the Message developer checks to see if any message fields have been added/removed/renamed by the change in the mapping.

An example interface of the screen editor **708** extends org.eclipse.ui.editors using the GEF GraphicalEditor. The tool **116** coordinates the creation and/or modification of message definitions in the (e.g. message **404**) components as well as the inter-relation of the created/modified message affecting other associated components of the application **105**.

Workflow Editor **702**

The workflow editor **702** is responsible for facilitating the user of the tool **116** to create and modify the command code (e.g. ECMA Script) in the workflow components **406** of the application **105**. The interaction of the Developer with the editor **702** can be assisted or otherwise driven by the patterns **648** (see FIG. **13**) that are associated with application workflow configuration, as further described below. The workflow editor **702** defines the screen-to-screen transitions that form

24

the core of the visual part of the component application **105**. Screens and transitions between screens due to user/script events are rendered visually.

Example commands editable by the workflow editor **702** can include commands such as but not limited to: QueryScreens which is sent when the developer wants a list of screens to select from, such as when adding a new screen to the workflow; QueryScripts which is sent when the developer wants a list of scripts to call on a screen navigation event; QueryArrivingMessages which is sent when the developer wants a list of response messages (including notifications) on which to key screen transitions; AddComponent which is sent when the developer wants to add a new screen, message or script to the workflow that doesn't already exist in the workflow, this command triggers ComponentAdded of the data model **608** if successful; and ChangeNavigation which is sent when the developer adds a new navigation to the workflow, this command triggers NavigationChanged of the data model **608** if successful.

Example input events of the workflow editor **702** can include events such as but not limited to: ComponentRemoved whereby the workflow developer (user of the tool **116**) checks to see if the component is a workflow object (Screen, Script, Arriving Message), then the Workflow updates itself by deleting all relationships with this object definition; ComponentRenamed whereby the workflow developer (user of the tool **116**) checks to see if the component is a workflow object, then the workflow updates its visual with the new name of the component; NavigationControlChanged whereby the workflow developer (user of the tool **116**) checks to see if the workflow must update its view of the navigation based on the control change, if for example a button has been added to a screen in the workflow, then the view is updated to show the availability of a new navigation node on that screen; ScreenParameterListChanged whereby the workflow developer (user of the tool **116**) checks to see if a screen's parameter list has changed and that screen is in the workflow, then the developer updates the view of any navigation involving that screen; NavigationChanged whereby the workflow developer (user of the tool **116**) checks to see if a possible navigation change has occurred, the developer finds and parses the change and makes any necessary updates to the view; and ExitCodeChanged whereby the workflow developer (user of the tool **116**) checks to see if an exit point has been added/removed, then editor view is updated to reflect this visually. An example interface of the screen editor **708** extends org.eclipse.ui.editors using the GEF GraphicalEditor.

Message-Data Relationship Editor **704**

The message editor **704** is responsible for facilitating the user of the tool **116** to create and modify the structured definition language code (e.g. XML) in the inter-related message **404** and data **400** components of the application **105**. The interaction of the Developer with the editor **704** can be assisted or otherwise driven by the patterns **648** (see FIG. **13**) that are associated with message-data relationship configuration, as further described below. The message/data relationship editor **704** creates and edits relationships between Message Components **404** and Data Components **400**. These mappings effect how a Data Component **400** is populated on Message arrival to the device **100** when running the application **105**. For example, data object definitions common between data **400** and message **404** components can be such that the data object definitions can be resident in the data component **400**, while a only data mapping definition (stating where the data object definition(s) can be found) linking the message component **404** to the data object definition in the

data component **400** can be resident in the message component **404**, or vice versa. A similar configuration can be employed for data object definitions common between screen **402** and data **400** components, whereby the data object definition is resident in one of the components and the data mapping definition is resident in the other associated component, as further described below in relation to the screen-data relationship viewer **804** (see FIG. 8).

Example commands editable by the editor **704** can include commands such as but not limited to: AddComponent which is sent when the user adds a new Data or Message to the relationship diagram with the effect of also adding that component to the application **105** being developed, this command triggers ComponentAdded of the data model **608** if successful; QueryMessages which is sent when the developer needs a list of Messages to map; QueryData which is sent when the developer needs a list of Data to map; ChangeMessageLevelMapping which is sent when the developer changes a message level mapping, this command triggers FieldMappingChanged of the data model **608** if successful; ChangeFieldLevelMapping which is sent when the developer changes a field level mapping, this command triggers FieldMappingChanged of the data model **608** if successful; ChangePrototype which is sent when the developer changes (adds/removes) a prototype relationship between Data objects, this command triggers FieldMappingChanged of the data model **608** if successful; and ChangeContainment which is sent when the developer changes a containment relationship between Data objects, this command triggers MessageContainmentChanged of the data model **608** if successful.

Example input events of the editor **704** can include events such as but not limited to: ComponentRemoved whereby the developer (user of the tool **116**) checks to see if the object removed was a Message or Data, the relationship mapper deletes any relationships involving the removed object; ComponentRenamed whereby the developer (user of the tool **116**) checks to see if the renamed object is involved in any mapping relationships, the visual representation of the mapped object is updated with the new name; MessageFieldChanged whereby the developer (user of the tool **116**) checks to see if the message concerned is present in the relationship editor, then field change is reflected in the visual representation of the message, if the field in question is involved in a mapping, then changes are reflected and the developer may need to be warned of broken mappings (if for example, a field has been removed); and DataFieldChanged has the same interest as MessageFieldChanged except with Data instead of Messages.

An example interface of the editor **704** extends org.eclipse.ui.editors using the GEF GraphicalEditor. The tool **116** coordinates the creation and/or modification of message/data definitions in the (e.g. message/data **404/400**) components as well as the inter-relation of the created/modified message/data definitions affecting other associated components of the application **105**.

Localization Editor **714**

The localization editor **714** provides for the developer to collect all strings that will be visible to the application **105** end-user (of the device **100**) and edit them in one place. The editor **714** also provides for the developer to create multiple resource mappings for each string into different languages. Example commands editable by the editor **714** can include a command such as but not limited to: ChangeLocalizedString which is sent when the developer adds, deletes or modifies a localized string. An example input event of the editor **714** can include an event such as but not limited to: Localized-

StringChanged which is used to determine when a string literal has been changed in the script editor or a label has changed in the screen editor **708**. The Localization Editor **714** can extend the org.eclipse.ui.editors interface by extending an EditorPart.

Backend Visualizer Editor **716**

The backend visualizer **716** shows the developer the relationships between Message Components **404** and the backend data sources **106** (web services, SQL etc.—see FIG. 1) that drive the components **404**. The interaction of the Developer with the editor **716** can be assisted or otherwise driven by the patterns **648** (see FIG. 13) that are associated with message and/or data relationship configuration between the device runtime RE (see FIG. 1) and the backend data sources **106**, as further described below. The editor **716** also provides for the developer to add new sources **106** to the list of those supported by the application **105** in development. In addition to interaction with the design time data model **608**, as is described for other modules **601** using commands and events received, the Backend Visualizer editor **716** collaborates with the Backend Connector **616** (see FIG. 6). The Backend Connector **616** provides for the visualizer to request a Services-Interface from a registry of known service types (e.g. Web Services, SQL Databases). A list of Services of this type is returned that can queried by name or by iteration.

Example commands editable by the editor **716** can include commands such as but not limited to: AddComponent which is sent when the developer adds a new message, this command triggers ComponentAdded of the data model **608** if successful; and SpecifyMapping which is sent when the developer connects a message to a selected backend data source **106**. Example input events of the editor **716** can include events such as but not limited to: ComponentRemoved whereby the developer (user of the tool **116**) checks to see if the component is a message, the backend visualizer adjusts its mappings for that message; ComponentRenamed has the same interest as ComponentRemoved; and MessageFieldChanged whereby the developer (user of the tool **116**) validates the message field against what exists on the backend and visually notifies of any broken mappings. Backend data sources **106** are accessed through direct calls to the service layers. Optionally, background processing may be used to keep network processing from blocking UI threads. The Editor **716** can extend the org.eclipse.ui.editors using the GEF GraphicalEditor.

Viewers **602**

Referring to FIGS. 6 and 8, viewers **602** are modules **601** that commit their changes to the data model **608** as soon as the developer makes them. Referring to FIG. 8, the distribution of viewers **602** in to Eclipse plug-ins (by way of example only) is shown. Tool viewers **602** fall broadly into two categories, such as but not limited to the categories of: Resource viewers **810** and Graphical Editing Framework (GEF) viewers **808**, which provide an edit space in which to view objects. The user can view nodes (entities) and connections (relationships) between them, so as to for example define the content and inter-relationships of the XML coding of the components **400**, **402**, **404**, **406** (see FIG. 4). It is recognised that the viewers **602** are used to create and modify definitions contained in the components **400, 402, 404, 406** as well as to create and modify the interdependencies of the definitions between the components (e.g. data-data, data-screen, message-data, screen-data, data-message) as further discussed below. The Eclipse viewers are modules **601** that commit changes to the data model **608** as soon as the user makes one. The Viewers **602** include: the Navigator **802** which shows a hierarchical

view of the application **105** projects in the workspace of the display **206** (see FIG. 2) realized by a tree view (for example); a Testing/Preview viewer **806** that emulates the runtime behaviour of the application **105** and the Screen-Data Relationship viewer **804** that can be a read-only view of the relationships between a screen **402** and the data **400** components that are bound to the respective screens. Each viewer **602** can create an extension point at `org.eclipse.ui.views` and can implement the `IViewPart` interface of the Eclipse platform, usually through a selected default super-class.

Navigator Viewer **802**

The Navigator **802** provides the developer with a hierarchical tree view (for example) of all the project applications **105**, folders and files in the workspace of the display **206**. The developer can browse and manipulate the objects definitions associated with the selected application **105** project from the Navigator **802**.

Example commands by the viewer **802** can include commands such as but not limited to: `AddComponent` which is sent when a new component is added to the application **105** project through a New menu on a navigator context menu (not shown), this command triggers `ComponentAdded` of the data model **608** if successful; `RemoveComponent` which is sent when a component is removed by deleting it from the navigator context menu, this command triggers `ComponentRemoved` of the data model **608** if successful and `RenameComponent` which is sent when a component is renamed by selecting it in the navigator, this command triggers `ComponentRenamed` of the data model **608** if successful.

Example input events of the viewer **802** can include events such as but not limited to: `ComponentAdded` for when a component is added, the navigator **802** refreshes its view of the project application **105** and `ComponentRemoved` has the same interest as `ComponentAdded`. Example interfaces for the navigator viewer **802** is such that the viewer **802** extends the `org.eclipse.ui.views` extension by sub-classing `org.eclipse.ui.views.navigator.ResourceNavigator`, by example for the Eclipse framework.

Screen Data Relationship Viewer **804**

The Screen/Data viewer **804** provides for the developer to view the relationships between a given screen definition and the Data definition that is bound to it. The interface can be read-only and is constructed from design time data contributed by the associated Screen **404** and Data **400** components. For a read only viewer **804**, the viewer **804** does not have any commands that affect the data model **608**. Example input events of the viewer **804** can include events such as but not limited to: `ComponentRemoved` whereby the developer (user of the tool **116**) checks to see if the component removed is a Screen **402** or Data **400** component, the developer removes any relationships with the removed component; `DataBindingChanged` whereby the developer (user of the tool **116**) checks to see if the component is a Screen **402** or a Data **400** component and is currently open in the viewer **804**, then the name of the component is updated and `ComponentRenamed` whereby the developer (user of the tool **116**) checks to see if the `DataBinding` involves a Screen **402** and/or Data **400** components that are currently open, then any new relationships are depicted in the view of the display **206** (see FIG. 2). The viewer **804** can extend `org.eclipse.ui.editors` using the `GEF GraphicalEditor`, but as a “read-only” editor view.

Testing/Preview Viewer **806**

The Testing/Preview viewer **806** emulates the runtime behavior of the application **105** outside of the device **100** (on the designer's computer **201**—see FIG. 2). The viewer **806**

interacts with: the `ISkin Manager` **618** of the service layer **614** (see FIG. 6) such that a collection of skin plug-ins are managed for the emulated device **100**; the Runtime Data Model **610** that models the properties and state of the emulated application **105** and the `Design Time Data Model` **608** that provides the metadata for the emulated application **105**, such as what visual elements exist on a screen and how they are to be laid out.

Referring to FIGS. 1 and 9, a method **900** is shown for developing the application **105** having component **2** **400,402,404** with descriptors expressed in a structured definition language and component **406** expressed as a series of instructions. It is recognised that individual components **400,402,404,406** interact for processing messages on the runtime environment RE of the device **100** that are received from the datasource **106** over the network **10**. In constructing the application **105**, the definitions of the components **400,402,404** are developed **902** through interaction with the data model **608**, the model **608** for providing a persistent state of the application. The instructions of the second component are developed **904** through interaction with the data model **608**. Message mapping information of the data source **106** selected for the application **105** is obtained **906** for assisting in the generation of the definitions based on the mapping information. Once completed, the components **400,402,404,406** are assembled **908** into the application **105**.

Application Development Patterns **648**

Recommendation Patterns **654**

Referring to FIGS. 13 and 14, the tool **116** can use the Approach Recommendation pattern **654** presented on the display **206** (see FIG. 2) as a wizard **604** in order to guide the developer to determine which of the available development approach patterns **650** are best suited to the current development activity. As noted above, the wizard **604** operation is guided through the dialogs **605** accessed through the user interface **202** of the tool **116**. For example, the developer is faced with the initial problem of how to decide which approach pattern **650** to take when developing the application **105**. Referring to FIG. 14, the developer starts **1402**, or otherwise continues an existing application **105** project, by considering some issues that may effect the pattern **650** selected, issues such as but not limited to: limitation to a framework of existing elements such as web services, prior applications, current database configuration or some combination of these elements. The developer then reviews **1404** design parameters that may factor in to the approach pattern **650** selection, which can include parameters such as but not limited to: there is an existing application operation with well understood workflow and/or screens that are required to be emulated by the application **105**; there may be a specific datasource **106** that will be connected on the backend, and it is desired to model the application **105** based on this specific datasource **106** schema; there may be an existing web service (datasource **106**) that the application should interact with and accordingly no changes may be made to the behaviour of that web service (datasource **106**); and the application **105** may be a simple test of the web service or may generate a simple form based interface. These design parameters can be suggested by the pattern **654** to the developer via the display **206** as desired.

Based on a decision **1404** of which component(s) **400,402,404,406** are central to the development approach patterns **650**, the recommendation pattern **654** can select **1406** automatically (communicated to the developer via the display **206**) which of the patterns such as but not limited to: a bottom-up pattern **650a** that is message component **404** centric; a lazy man pattern **650b** that is message component **404** centric; a

data driven approach **650c** that is data component **400** centric; and a business domain template pattern **650d** that is data component **400** centric, as further described below. It is also recognised that the developer could not use the recommendation pattern **654** and instead manually select **1406** which of the development approach patterns **650** to start with. Further, it is recognised that other development patterns **650** could be screen component **402** and/or workflow component **406** centric, as desired. Further, it is recognised that there may be situations in which more than one component **400,402,404,406** can be selected as a starting point for application development purposes, based on the step **1404**. However, in this case, a specific editor **600** or viewer **602** associated with one of the selected components **400,402,404,406** could be selected (either manually or automatically) as a module **601** to start the development process.

Referring again to FIG. 14, if the pattern **650** decision at step **1406** is, for example, that there is an existing web service (data source **106**) that is available, and the application **105** is restricted to employ the corresponding Web Services interface, then a message component **404** centric approach can be taken at step **1408**, referred to as the "Bottom Up Approach" pattern **650a**. An extreme case of this situation, in which the developer cares little about how the application looks, may allow the use of the Lazy Man Approach pattern **650c** which is also message component **404** centric. On the other hand, if at step **1406** the developer has the application **105** development task that closely mirrors an existing datasource schema, the Data Driven Approach pattern **650c** can be selected **1408** which is data component **400** centric. Similarly, a standard set of data components **400** that model a particular business domain may be the reason for selecting **1408** the business domain template pattern **650d**, also data component **400** centric. Accordingly, the particular development patterns **650**, either the above described or others as desired, can be selected according to component **400,402,404,406** centric reasoning.

Development Patterns **650**

BottomUpApproach Pattern **650a**

Referring to FIGS. 13 and 14, the Bottom Up Approach pattern **650a** takes the approach of generating the suitable application **105** based on available backend datasource **106** messaging description (e.g. SQL and WSDL). Included in this pattern selection **650a** are the issues of: how you do intelligently and efficiently build the application **105** that works to an existing Web Service or other datasource **106** service; and are one or more existing backend datasource **106** services that the developed application **105** must address or otherwise communicate with. Example design parameters for consideration are: a typical corporation has its legacy set of available services of the datasource **106** and a set of public Web Services available via the internet may be the framework for the application **105**. Accordingly, the above details and decisions could be displayed to the developer via the display **206** or could be decided upon manually by the developer. Based on the above, the pattern **650a** could direct the developer (via the display **206** or other means of the user interface **202**) to:

1. Select the message editor **712** (and associated message related wizards **604** at step **1408**) (see FIG. 7) at step **1410** for assembling a message component **404**;
2. Enter the URL of the target Web Service;
3. Pick operation to generate messages of the message editor **712**;
4. Select field default values;

5. Acknowledge recommendations for message duplication generated by the MessageAutomerge pattern **660b** (further discussed below), for example using the model validator **602** (see FIG. 6);

6. The MessageContentTarget pattern **658a** (further discussed below) may be applied if the developer wants to generate a suitable data component **400** to persist the message data of the message component **404**, or link the message of the message component **404** to a screen defined in a screen component **402**; and

8. The development of the application can be completed **1412** by specifying any additional data **400**, screens **402**, and workflow **406** (e.g. navigation) components using associated editors **600** and viewers **602** with related wizards **604** as further described below. This can be accomplished by going directly to step **1412** or by crossing the paths of step **1408** under direction of the appropriate wizard **604** (indicated symbolically by reference numerals **1409**).

Lazy Man Approach Pattern **650b**

Referring to FIGS. 13 and 14, the Lazy Man Approach pattern **650b** can be an extension of the Bottom Up Approach pattern **650a**, whereby the entire application **6105** is generated including data components **400** and screen components **402**. Included in this pattern selection **650b** are the issues of: how do you efficiently generate the application **105** to be able to test an existing Web Service data source **106**; and you are in the early stages of development and your target Web Service datasource **106** is changing the messaging schema frequently, for example you want to be able to quickly generate the application **105** to test the interface and are not really concerned about the presentation of the application **105**. Example design parameters for consideration are: the UI appearance of the application **105** may have little effect on ability to interact with the Web Service datasource **106**; and the developer may be most concerned with testing and debugging of the backend datasource **106**. Based on the above, the pattern **650b** could direct the developer (via the display **206** or other means of the user interface **202**) to:

1. start with the Bottom Up Approach pattern **650a**, which is applied at step **1408** and extended;
2. in conjunction with the data editor **710** (and potentially editor **704**) at step **1410** and if desirable **1409** the pattern **650b** provides a set of suggested data components **400** to model data passed or returned from message invocations of the message components **404**;
3. a set of default screens to present or enter data passed to the Web Service is generated by the screen editor **708** and potentially viewer **804**) and accepted; and
4. The development of the application **105** can be completed **1412** by specifying any additional data **400**, screens **402**, and workflow **406** (e.g. navigation) components using associated editors **600** and viewers **602** with related wizards **604** as further described below. This can be accomplished by going directly to step **1412** or by crossing the paths of step **1408** under direction of the appropriate wizard **604** (indicated symbolically by reference numerals **1409**).

Data Driven Approach Pattern **650c**

Referring to FIGS. 13 and 14, the Data Driven Approach pattern **650c** assists the developer to create the application **105** using the tool **116** that closely resembles or is otherwise similar to an existing database schema. Included in this pattern selection **650c** are the issues of: how do you produce the application **105** that takes its structure primarily from an existing datasource **106** model; the target application data structure is to closely/identically resemble a portion of the datasource **106** schema; and the application **105** is used pri-

marily to view or update information being stored in the backend datasource **106**. Example design parameters for consideration are: the application **105** is data centric and the functionality of the application **105** behaves in a simple view/update/delete mode. Based on the above, the pattern **650c** could direct the developer (via the display **206** or other means of the user interface **202**) to, by way of example only:

1. Select the data editor **710** at step **1410** (and associated data related wizards **604**) at step **1408**;
2. Select to generate the data components **400** according to the database schema using the editor **712** (and potentially editor **704**);
3. Provide the location of the database schema (e.g. may be expressed through a ddl file);
4. Suggesting matching data components **400** to “cache” data expressed through the tables as per the previous step;
5. The developer may select a subset of the available tables such that the tool **116** maintains the minimum (or other predefined criteria) dependent relation set for associated required tables;
6. The user may specify how the table is accessed, e.g. select/update/delete, and suggested messages may be generated by the message editor **712** to support these functions; and
7. The application is completed **1412** by providing the messaging components **400** to perform interaction with the datasource **106** using the message editor **712** (assuming step 6. was skipped), and providing screen components **402** to visualize and manipulate the data components **400** by employing at step **1412** appropriate screen editors **708** and viewers **804** with related wizards **604** where provided by the tool **116**.

BusinessDomainTemplate Pattern **650d**

Referring to FIGS. **13** and **14**, the BusinessDomainTemplate pattern **650d** may be used to assist the developer as part of the primary approaches to generate a standard set of data components **400** that model a particular business domain for the application **105**. Included in this pattern selection **650d** are the issues of: how do you produce the application **105** that is best suited for a particular vertical market place; and you are developing the application **105** for a particular domain of business applications, e.g. insurance, health sector, real estate, auto industry etc. Example design parameters for consideration are: business sectors typically have their own well defined entities and relationships; the developer wants to make sure that the application **105** is familiar to the domain user; desire to avoid “reinventing the wheel”; and desire to make sure the application **105** adheres to accepted conventions. Based on the above, the pattern **650d** could direct the developer (via the display **206** or other means of the user interface **202**) to, by way of example only:

1. The business domain template pattern **650d** (e.g. wizard) is invoked **1408** on the display **206** by the developer using the UI **202**, and the schema (XSD) location for the business domain is provided;
2. the tool **116** generates a set of data components **400** matching the business domain through using the data editor **710** at step **1410**;
3. the developer may select the objects of the schema that are of interest, discard those that are not used (typical domain schemas are quite large);
4. the tool **116** maintains relationships between connected data expressions in the schema to make sure that all dependent components **400** are included; and
5. the application **105** is completed **1412** by providing the messaging components **400** to perform interaction with the datasource **106** using the message editor and providing screen

components **402** to visualize and manipulate the data components **400** by employing at step **1412** appropriate screen editors **708** and viewers **804** with related wizards **604** where provided by the tool **116**.

It is recognised that use of other editors **600** and viewers **602**, other than those described above by way of example only, may be directed by the wizard **604** for the respective pattern **650a,b,c,d** as required. This includes interaction between wizards **604** and associated patterns **648** as preferably directed through the wizard **604** for the respective pattern **650a,b,c,d** as displayed to the developer on the display **206** (or otherwise through the user interface **202**).

Validation Patterns **660**

Message Automerge Pattern **660a**

An MessageAutomerge pattern **660a** is a refinement pattern that may reduce duplication in definition of messages of message components **404** exchanged with the backend datasource **106**. This pattern **660a** can be implemented on the display **206** when the validator **620** (see FIG. 6) is invoked for validation purposes of the application **105**, as a consequence of developer input events on the UI **202**. Included in this pattern selection **660a** are the issues of: how do you generate the most efficient set of messages to interact with the backend Web Service; and you are developing the application **105** using the Bottom Up Approach pattern **650a** and have generated a set of messages for a particular web service (data source **106**). Example design parameters for consideration are: some interfaces may exchange similar or duplicate sets of parameters; and every duplicate specification has an associated (and unnecessary) cost in terms of application **105** size, over the air transmission overhead, on device runtime RE requirements. Based on the above, the pattern **660a** could direct the developer (via the display **206** or other means of the user interface **202**) to, by way of example only:

1. the set of generated messages (of the message component **404** by the message editor **712** for example) is provided by (for example) by the Bottom Up Approach pattern **650a** as described above;
2. the messages are analyzed to see if there is commonality in terms of the messages, e.g. one message is a subset of another (comparison if field numbers & types) and/or any duplicate message definitions;
3. the tool **116** makes recommendations where prototyping may be used to define similar messages by inheritance, or where duplicate messages may be eliminated.

DataAutomerge Pattern **660b**

This pattern **660b** is capable of providing the same sorts of optimizations and steps discussed for messages in the MessageAutomerge pattern **660a** when applied to the set of Data component **400** specifications (by the data editor **710** for example) of the developed application **105**.

Screen Patterns **656**

Referring to FIG. **14**, the screen patterns **656** can be applied at steps **1410** and/or **1412** as secondary patterns **648** to assist in generation of the screen components **402** according to the primary pattern **650** direction/coordination, i.e. pattern **650** drives pattern **656** that drives the operation of the screen editor/viewer **704,804** in assisting the developer in generation of the screen components **402** of the application **105**. The coordination **1500** of primary and secondary patterns is shown in FIG. **15**, where the primary pattern (for example pattern **650**) is first invoked **1502** (for example by patterns **654**). The primary pattern then invokes or otherwise selects **1504** the secondary pattern (for example patterns **652,656,658,660**) which in turn assist or otherwise invoke **1506** the

33

appropriate editors **600** and viewers **602** for development of the components **400,402,404,406** as desired by the developer or otherwise directed by the patterns **652,656,658,660** (i.e. wizards **604**). It is also recognised that the primary patterns could invoke **1508** directly the appropriate editors/viewers **600, 602** as desired. Also, once the secondary pattern has completed its direction of the associated editors/viewers **600, 602** in developing the corresponding components **400,402, 404,406** (i.e. the editor **712** being directed by the pattern **658** to construct the message component **404**), direction can be handed back **1510** to the original primary pattern or to a different primary pattern or handed **1512** to other secondary pattern to continue the application **105** development.

Form Pattern **656b**

The Form pattern **656b** provides a way for the developer to efficiently generate a screen (as screen component(s)), using the screen editor **704** and viewer **804**, that collects and submits some values. Included in this pattern selection **656b** are the issues of: how do you efficiently produce a form to collect and submit some information; and the screen to be produced has a structured, such as a table based format. Example design parameters for consideration are: forms are frequently used to collect standard sets of information e.g. user details, preferences etc. Based on the above, the pattern **656b** could direct the developer (via the display **206** or other means of the user interface **202**) to, by way of example only:

1. the developer is prompted by the pattern **656b** using the screen editor/viewer **704,804** for the number of columns that will appear in the form;
2. or each row that is to appear in the form;
 - a. the developer identifies what type of control appears in each column e.g. label, editbox, image, etc such that the developer enters required text for any labels and identifies data mappings where appropriate;
3. the developer identifies how screen transition takes place via submission, e.g. submit by button, submit by menu item and applies MessageOrigination pattern **652a** where appropriate; and
4. the screen component **402** development is completed (either in whole or in part) and subsequent editors/viewers **600,602** are either invoked directly or through subsequent wizards **604**.

DataSheet Pattern **656e**

The DataSheet pattern **656e** provides a way to generate a screen that is based on a data definition of a data component **400**, for example. Included in this pattern selection **656e** are the issues of: how do you generate a screen that is based on an existing data definition; and when using this pattern **656e**, the screen becomes a visual means to represent the data structure itself. Example design parameters for consideration are: some screens are generated just for the purpose of modifying a data component **400**. Based on the above, the pattern **656e** could direct the developer (via the display **206** or other means of the user interface **202**) to, for example only:

1. using the screen editor/viewer **704,804** the developer provides the data component **400** definition from which the screen is to be generated;
2. the tool **116** generates a screen (using a screen component **402** and associated editor/viewer **600,602**) having two columns; one column for the field names, another column for the field values, such that
 - a. the control names may be automatically generated based on the data component **400** definition field names,
 - b. the control type will be generated based on the data type where,

34

- i. simple fields are mapped to edit boxes, and
- ii. nested data fields produce an “Add”, “Edit” and “Remove” buttons. The DataSheet pattern **656e** is reapplied to generate the screen (screen component **402**) that visualizes the nested data component **400** such that,
 - I. presentation of the “Add”, “Edit” and “Remove” buttons depend on runtime conditions (ie. Whether the nested component is null or not),
- iii. Nested array type fields generate a choice list such that,
 - I. arrays of simple values can be represented directly by the choice list,
 - II. arrays of components use the DataSheet pattern **656e** to be reapplied for the contained datatype, and
 - III. “Add”, “Edit” and “Remove” buttons may be displayed based on runtime conditions,
 - a. Add is always displayed,
 - i. At runtime the “Add” button may open the dialog **605** to collect a simple value, or may transition the application **105** to a sub page to create the data component **400**,
 - b. Edit is displayed when a choice is made,
 - c. Remove is displayed when a choice is made,
 - i. Removal of data component **400** may prompt the user if they want to remove all nested data instances,
 - iv. Fields having resource designation result in image field,
- c. The field labels should be entered by the developer,
- d. Any particular field may be skipped at the discretion of the developer,
3. the tool **116** generates a submit button that applies the values, and
4. the screen component **402** development is completed (either in whole or in part) and subsequent editors/viewers **600,602** are either invoked directly or through subsequent wizards **604**.

SlideShow Pattern **656a**

The SlideShow pattern **656a** generates a screen (i.e screen component **402**) that visualizes a dynamic set of images. Included in this pattern selection **656a** are the issues of: how do you effectively show a series of images where the number of images is dynamic so cannot be determined at design time; and the application **105** relies on a dynamic set of URLs that may point to different images based on some prior conditions. Example design parameters for consideration are: it is difficult and time consuming to produce the screen and script that allows for this behaviour. Based on the above, the pattern **656a** could direct the developer (via the display **206** or other means of the user interface **202**) to, by way of example only:

1. using the screen editor/viewer **704,804** the developer identifies the source of the URLs (from array)
 - a. May be an array field on the data component **400**,
 - b. May be an array field on a received message;
2. the tool **116** generates a basic screen (component **402**) having an image control mapped to a global variable
 - a. the tool **116** generates the global variable;
3. the tool **116** generates a “next” button
 - a. an attached script component **406** is generated that loads the global variable of 2.a with the next image URL from 1;
4. the tool generates a “done” button; and
5. the screen component **402** development is completed (either in whole or in part) and subsequent editors/viewers **600,602** are either invoked directly or through subsequent wizards **604**.

35

Access Device Data Pattern **656c**

The Access Device Data pattern **656c** provides intelligent handling of access to “built-in” collections based on device access (e.g. Calendar appointments, Addressbook entries etc.). The pattern **656c** provides a means to distinguish between the entire collection of components as managed by the device **100**, and a subset of components created and managed by the application **105**. Included in this pattern selection **656c** are the issues of: how do you easily distinguish between use of the entire device **100** managed collection of external components, versus just the subset of components on which the application **100** operates; and you are developing the screen component **402** that makes reference to an external collection such as calendar appointments. Example design parameters for consideration are: some applications **105** may want to operate on all the external collection entities managed by the external application; some applications **105** may want to show only external application components that are created and managed by the itself. Based on the above, the pattern **656c** could direct the developer (via the display **206** or other means of the user interface **202**) to, by way of example only:

1. using the screen editor/viewer **704,804** the developer links a control to a “built-in” collection such as Calendar or Addressbook;
2. the developer indicates the containment relationship for the built-in collection
 - a. the collection can include all references created and managed externally by the accessed application
 - b. the collection can include only those components created or referenced explicitly by the application;
3. the tool **116** generates the data component **400** for the situation indicated in 2
 - a. For standard collection of components, the application **105** data component **400** simply uses the built-in component by name e.g. “Address”;
 - b. For the application **105** managed collection, the application data component **400** extends the built-in component and adds a UID key field,
- i. The extended data component **400** is given a hidden name, possibly by pre-pending the application **105** name to the collection name,
- ii. the tool **116** then uses this hidden name when generation of the screen occurs, but continues to use the built-in collection name in the design views of the tool **116**,
- iii. the tool **116** maintains relationship to the correct underlying type when data is passed to a script or another screen component **406,402**; and
4. the screen component **402** development is completed (either in whole or in part) and subsequent editors/viewers **600,602** are either invoked directly or through subsequent wizards **604**.

Supporting Code:

The built-in collection may be extended as follows to allow application **105** managed collections:

```
<data name="[wicketName]Address" prototype="[UIDpkg]"
pkey="UID">
<dfield name="UID" type="..." />
</data>
```

36

do you specify that a particular control may only be shown under certain circumstances; how can you write the application **105** in such a way that as little navigation logic as possible is embedded into the script components **406**, and is rather expressed in the screen definition; and you are developing the application **105** that has navigation or message sending that is conditional on some testable criteria. Example design parameters for consideration are: it is desirable to shift conditional logic for navigation from the scripts into the definitions of the screen component **402**; and you want to take full advantage of other helper patterns such as the Message-Origination pattern **652a** (for example). Based on the above, the pattern **656d** could direct the developer (via the display **206** or other means of the user interface **202**) to, by way of example only:

1. using the screen editor/viewer **704,804** the developer indicates that a particular control is subject to conditional logic;
2. the tool **116** presents an area whereby the condition may be stated
 - a. prior conditions generated are displayed for reuse;
3. the tool **116** associates the condition to the control and prompts whether other patterns such as Message Origination **652a** are to be applied; and
4. the screen component **402** development is completed (either in whole or in part) and subsequent editors/viewers **600,602** are either invoked directly or through subsequent wizards **604**.

Supporting Code:

Consider the following two examples:

Example A: (Correct Approach):

```
<screen name="fromScreen">
<button name="submitToScreenA"
condition="return User.selection == "A">
<event script="sendMsgAGotoA" param="aType"/>
</button>
<button name="submitToScreenB"
condition="return !User.selection == "A">
<event script="sendMsgBGotoB" param="bType"/>
</button>
</screen>
```

```
<script name="sendMsgAGotoA" params="a">
A.send(a);
ScrA.display( );
</script>
```

```
<script name="sendMsgBGotoB" params="b">
B.send(b);
ScrB.display( );
</script>
```

Example B: (Incorrect Approach)

```
<screen name="fromScreen">
<button name="submitToScreenAOrB">
<event script="sendAndBranchAOrB" param="aType, bType"/>
</button>
</screen>
<script name=" sendAndBranchAOrB" params="a,b">
if(User.selection == "A") {
A.send(a);
ScrA.display( );
} else {
B.send(b);
ScrB.display( );
}
</script>
```

Make Screen Controls Conditional Pattern **656d**

The Make ScreenControls Conditional pattern **656d** allows the developer to attach a condition to a screen control that specifies the criteria by which visibility is determined. Included in this pattern selection **656d** are the issues of: how

Example A illustrates the correct approach whereby the conditional navigation is embedded into the screen via a condition script. The script performing the screen transition and message send is gated by the current state of User.selection. Example B illustrates the less desirable approach

whereby the conditional logic is evaluated within a single script. By using the approach of Example A, the Message-Origination pattern **652a** may be more readily applied.

Script Patterns **652**

MessageOrigination Pattern **652a**

The MessageOrigination pattern **652a** provides an intelligent means of generating script required to send a message of a message component **404**. The pattern **652a** applies some rules to determine where the content of the message should come from. Included in this pattern selection **652a** are the issues of: you are developing a screen component **402** that will collect or manipulate some information and then send a message; how can you easily produce the script required to send the message; the screen component **402** has an associated data type for processing that may have been supplied as a parameter, constructed in the screen, or referenced as part of a collection. Example design parameters for consideration are: the ability to generate scripts for common usage scenarios can reduce the complexity of developing applications **105**; and Message, screen, data definitions or respective components and their inter-relationships adhering to application **105** development best practices typically may be subject to a set of recognized processing rules. Based on the above, the pattern **652a** could direct the developer (via the display **206** or other means of the user interface **202**) to, by way of example only:

1. using the workflow/script editor **702,706** when developing a workflow component **406** that may branch conditionally to other screens (components **402**), or send different messages, the conditional logic should be captured in the screen component **402** design rather than shifted to the workflow component **406** (observe the Make Screen Controls Conditional **656d** approach), such that the effect of using this approach is that there need not be conditional logic embedded into the script generated by the MessageOrigination pattern **652a**;
2. as part of definition of a button or menu item, the user may attach a script to do custom processing. One typical processing is to send a message, and transition to another screen
 - a. the user is prompted if the script is to send a message, and identifies the message type (M) to be sent,
 - i. a subset of most likely messages to be sent can be extracted by observing mappings in use for data types that have been used in the screen definition of the component **402** (parameter or linked data),
 - ii. any other message previously defined may be chosen,
 - b. the user is prompted for the screen to which the application will transition;
3. the mappings rules for message type M are determined,
 - a. mapping in place to one or more data types (message mapping or field mapping),
 - i. the source of mapped data types must be indicated,
 - I. may be a data parameter that was passed to the screen component **402**,
 - II. may be a data type linked to a control used elsewhere in the screen component **402**,
 - III. may be the base data type of a collection (e.g. Data),
 - IV. may be the base data type of a collection type field on another data type (e.g. Data1.Data2),
 - ii. a script is generated that sends a message using data identified,
 - iii. a field mapped message generates a script of the component **406** that uses the data instances passed to the script to initialize the fields prior to sending,

- iv. a field mapped message that contains extended fields causes the tool **116** to prompt for values of these fields (may be from a screen control for instance, or just a literal value),
- v. the script that sends the message using specified data, and accepts appropriate parameters is generated. Message field sets are generated as required and the next screen is requested,
- b. There are no mappings for message type M,
 - i. the tool **116** prompts the user to identify where each of the field values come from
 1. may be from other screen fields,
 2. may be simple literal values,
 3. may be ignored,
 - ii. the tool **116** generates the script that accepts required parameters, sets the fields and sends the message, followed by transition to the next screen of the screen component **402**,
- c. mapping in place but the mapped data type is not passed to or used within the screen,
 - i. generates an error message, this message cannot be sent from this screen;
4. as an alternative to enforcing mappings for an existing message, the option to create a new message is offered
 - a. initial definition of the message can be suggested based on fields that are currently used within the screen, or linked data types that may be candidates for message mappings; and
5. the workflow component **406** development is completed (either in whole or in part) and subsequent editors/viewers **600,602** are either invoked directly or through subsequent wizards **604**.

MessageReception **652c**

The MessageReception pattern **652c** provides a means to utilize common processing at the reception of a message. Included in this pattern selection **652c** are the issues of: how do you simplify the specification of effect of application **105** through script when a message is received; you are writing the application **105** that receives messages; the messages of interest contain field level mappings which indicates that additional processing through script of the workflow component **406** may be required. Example design parameters for consideration are: there are some common scenarios that may be applied to reception of a field level mapped message; and there are primary key field mappings in the message that do not update other mapped data fields. Based on the above, the pattern **652c** could direct the developer (via the display **206** or other means of the user interface **202**) to, by way of example only:

1. using the workflow/script editor **702,706** the message specification of a message M is analyzed,
 - a. a message mapping in place indicates low likelihood of need for additional processing where there is no need for the tool **116** to prompt the developer to attach a script,
 - b. Field mapping relationships in place indicate a greater likelihood for additional processing through script, particularly,
 - i. a message that has primary key field mappings to data types that are not referenced on other message fields is an immediate trigger to prompt through the tool **116** the need for additional processing;
2. primary key field mappings are detected,
 - a. in the case that there is one isolated primary key field mapping (i.e. create) the tool **116** may prompt the developer if it is desired to attach additional process-

- ing through the script, the created script of the workflow component **406** would be empty in this case,
- b. in the case that there are two or more such isolated mappings as indicated above:
 - i. if one mapped data type is a nested field of the other data type: Data1.x, type of x is Data2,
 - I. the tool **116** recommends to set the instance of Data2 onto Data1 field x.
 - II. a script of the workflow component **406** is generated that performs the set operation
 - ii. if one mapped data type is the base type of a nested collection on the other data type: Data1.x, type of x is Data2
 - I. the tool **116** recommends that either an add, or remove may be performed,
 - II. the developer chooses the preferred option and the associated script of the workflow component **406** is generated;
 3. in the case that a field mapping is specified to a data type is that not correlated by a primary key mapping
 - a. the tool **116** may prompt the developer if every instance in the collection of this data type should be updated with that field value,
 - i. A subset of the entire collection may be specified via a where clause,
 - I. tool **116** prompts for condition field of data type,
 - II. tool **116** prompts for comparison operator,
 - III. tool **116** prompts for comparison value,
 - a. may be specified as coming from another field of the message that is not mapped; and
 4. the workflow component **406** development is completed (either in whole or in part) and subsequent editors/viewers **600,602** are either invoked directly or through subsequent wizards **604**.

Control Condition Pattern **652b**

The Control Condition pattern **652b** provides guidelines necessary to generate a condition affecting the display of a particular screen control through a script that could be contained in a workflow component **406**. A Control Condition always evaluates to a boolean result. Included in this pattern selection **652b** are the issues of: how do you specify that display of a screen control is dependent upon satisfying a set of conditions; how do you easily generate a script to implement this conditional behaviour; you are developing the application **105** that has branching or dynamic screen behaviour based on the current state of an element of data, the state of a screen control, or value in a passed parameter. Example design parameters for consideration are: the developer may have little scripting knowledge; and writing script is error prone. Based on the above, the pattern **652b** could direct the developer (via the display **206** or other means of the user interface **202**) to, by way of example only:

1. using the workflow/script editor **702,706** and or screen editors the developer is presented with a list of available
 - a. Data collections,
 - b. Current screen control names (edit boxes and list controls),
 - c. Available parameters that were passed to the screen,
2. the developer chooses one of the available entities provided in 1.
 - a. For collections,
 - i. the developer may test that there is at least one element (size()>0),
 - ii. the developer may test that a particular field is contained,

- I. "contains field" text is displayed for collections,
- II. "field value is" is displayed for keyless (singleton) collections,
- III. the developer may enter the field name,
- IV. the developer may specify the field value,
 - a. could be a literal (design time),
 - b. could be a runtime value,
 - i. field of data instance created or passed to the screen,
 - ii. control field of current screen,
- b. for screen parameters,
 - i. Parameter itself,
 - I. developer may test if the instance is undefined (ie null),
 - ii. single instance parameter fields,
 - I. developer may test that single instance is undefined (ie null),
 - II. developer may test that field of parameter has particular value (same as 2.a.ii.3 & 4),
 - iii. array parameter fields,
 - I. developer may test if there is at least one element (size()>0),
 - II. developer may test if a particular field is contained (same as 2.a.ii)
 - Options for test are controlled by what type of element is selected,
- c. for screen control fields,
 - i. for a selected edit or text area control,
 - I. developer may test if value is empty,
 - II. developer may compare value to a literal which the developer enters,
 - III. developer may test the value with a mask,
 - ii. for a selected choice control,
 - I. developer may test if the choice control is empty (true or false),
 - II. developer may test if a particular index is selected,
 - III. developer may compare to a literal which is provided,
 - IV. developer may test the value with a mask;
3. the developer may combine another condition by selecting "more" and choosing the appropriate operator (e.g. AND/OR);
4. the developer may elect to edit the condition in script form if other advanced behaviour is required; and
5. the workflow component **406** development is completed (either in whole or in part) and subsequent editors/viewers **600,602** are either invoked directly or through subsequent wizards **604**.

Messaging Patterns **658**

NotificationBuilder Pattern **658b**

The NotificationBuilder pattern **658b** provides a means to generate notification and subscription support from a notification datasource **106**. Included in this pattern selection **652c** are the issues of: how do you easily generate screens and messages to support a notification interface at the backend; how do you generate filters for screening of notifications; and you are working to a notification interface that is expressed through a WSDL file, as an example backend schema. Example design parameters for consideration are: notification Web Services are anticipated as becoming more widespread; notification interfaces and supporting subscription and filtering is a complex area; the developer must at least know the types of notifications supported by the datasource **106** through documentation or some other source and/or the pattern **658b** cannot distinguish between complex types used for notifications and those that are exchanged as part of regular synchronous request/response. Based on the above, the

41

pattern **658b** could direct the developer (via the display **206** or other means of the user interface **202**) to, by way of example only:

1. using the message editor **712** the developer points the tool **116** to the datasource WSDL (i.e. schema),
 - a. the tool **116** presents a list of available complex types from the WSDL,
 - b. the tool **116** presents a list of available operations from the WSDL,
 - c. the developer can select from the presented notifications based on a-priori knowledge of the service being exposed;
2. the tool **116** asks the developer whether they want to receive alerts for certain notifications (building the notification criteria)
 - a. the tool **116** asks the developer if they want to specify a separate criteria (ie filter) for the alerts
 - i. if no then the alerts will be a simple checkbox
 - ii. if yes then the alert will have a separate filter criteria;
3. the tool **116** collects the filter requirements for notifications and alerts as a set of filter parts
 - a. the developer can select from a field of the notification complex type
 - b. the developer can select a comparison operator
 - i. =, != for Strings,
 - ii. =, !=, >, <, >=, <= for Numbers,
 - iii. Other types,
 - c. the developer can select a comparator field
 - i. another field of the notification (no widget) or a single literal value,
 - I. the developer can indicate that this filter part is conditional,
 - a. a checkbox is used to represent it at the screen,
 - ii. a freeform entry field,
 - I. an editbox is used to represent this filter part at the screen,
 - II. The developer provides a text label,
 - iii. an enumeration of values,
 - I. a dropdown or radio button array is used to represent this filter part at the screen,
 - d. the developer names the filter part (this is used for display purposes on the screen),
 - e. The developer can indicate to add another filter part (boolean expression), joining with either && or || operator;
 4. the tool **116** makes note of all referenced notification fields, the remaining fields are candidates for static notification criteria, i.e. information the user provides when setting up the notification
 - a. the developer is asked if any of the remaining fields are to be combined as part of elemental filter criteria,
 - b. if so, the additional filter parts are built using approach of step 3, whereby only edit boxes and dropdown fields are permitted for input (no conditional filter parts here) such that this criteria becomes a static criteria;
 5. the tool **116** generates required components using appropriate editors **600** and viewers **602**
 - a. a data component **400** containing all the fields of the notification+an additional primary key field (id),
 - b. Notification message components **404**
 - i. a subscribe message component **404** for each notification type supported,
 - ii. An unsubscribe message component **404** for each notification type supported,
 - iii. a notification message mapped to data notification component **404**,

42

- c. alert message components **404** (if selected),
 - i. an alert subscribe message component **404** for each notification type supported,
 - ii. an alert unsubscribe message component **404** for each notification type supported,
 - iii. an alert notification message component **404** with suitable alert tag,
- d. a mapping file containing a filter for each notification and alert
 - i. filters containing conditional elements (ie dynamic filters) arising when filter parts are mapped to checkbox controls generate combinations of filters parts (only one such filter part supported for first phase, i.e. max **2** filters),
 - I. the subscription message for notification or alert includes a boolean field to indicate whether this flag has been selected such that the application gateway AG applies the correct filter based on the state of the flag;
6. the tool **116** generates support screens (components **402**)
 - a. the tool **116** decides on notification basic layout **1600** best approach (see FIG. **16** described below),
 - i. for greater than 4 visible notification information fields **1604**, recommend a stacked (vertical) layout **1602** of fields **1604**,
 - ii. for less than 4 visible notification information fields **1604**, recommend a line (flow) layout **1606** of fields,
 - b. the developer indicates whether the user will
 - i. view results and modify filters on the same page,
 - I. advantage: less page traversals,
 - II. disadvantage: focus visits every editable filter field,
 - III. see Consolidated Screen discussion below with reference to FIG. **17**,
 - ii. view results and modify filters on a separate page,
 - I. advantage: quick scrolling of notifications,
 - II. disadvantage: have to go to another screen to edit filter,
 - III. see SeparatedScreen discussion below with reference to FIG. **18**,
 - c. the developer may attach additional fields **1604** to the presentation that are not part of the notification filter criteria, but may be part of the notification result (i.e. mapped to the notification data type generated in 5.a.; and
7. the message component **404** development is completed (either in whole or in part) and subsequent editors/viewers **600,602** are either invoked directly or through subsequent wizards **604**.

ConsolidatedScreen

For example, generated screens **1700** for the consolidated visualization of notification result and filter are shown in FIG. **17**. The line layout is depicted here but is of no consequence to the behaviour of the screens. Black and white boxes **1702** are mapped to fields of the notification (fields A through D). Black boxes **1702** are considered readonly, whereas white boxes **1702** may be modified. The main screen displays static criteria **1707** as readonly. The user is able to modify notification and alert criteria **1706** which triggers a change action **1705** (this may not be a result of menuitem, rather default behaviour of changing a field). An updateSubscription script **1710** takes care of sending the appropriate notification and/or alert messages. The add **1712** menuitem transitions the user to the New Notification Screen **1704**, where both the notification and alert filters and the static criteria **1707** of the subscription may be specified. A submit button **1714** calls a

43

createSubscription script **1716** that sends the appropriate subscription messages. Finally a remove **1718** menuitem runs a script **1720** that removes the current notification and related subscription.

SeparatedScreen:

The generated screens **1800** for separate result and filter modification screens are depicted in FIG. **18**. The line layout is depicted here but is of no consequence to the behaviour of the screens. Black and white boxes **1802** are mapped to fields of the notification (fields A through D). Black boxes **1802** are considered readonly, whereas white boxes **1802** may be modified. A main screen **1806** displays all notification results previously setup in a repetition layout **1808**. There is no ability to modify the filter from this screen **1806**. A change **1810** menuitem transitions the user to a screen **1812** where a single notification is displayed. A static criteria **1814** is not modified at this screen **1812**, but the notification fields may be updated to generate a resubscription. An updateSubscription script **1814** would take care of sending the appropriate subscription messages including if both alert and notification filters are modified. An add **1818** menuitem transitions the user to the screen **1814** where both the notification and alert filters and the static criteria **1814** of the subscription may be specified. A submit button **1822** calls a createSubscription script **1824** that sends the appropriate subscription messages. Finally a remove **1818** menuitem runs a script **1820** that removes the current notification and related subscription.

EXAMPLE

The weather notification example from the "AG, RE, IDE Notifications" document will be used to illustrate this pattern **658b**.

1. The developer points to the weather notification Web Service,
2. The developer chooses the notification complex object as notification object,
3. The developer indicates that they will be receiving both alerts and notifications,
 - a. The developer indicates that the alert will not specify its own criteria, just allow it to be turned on and off: a checkbox is generated,
4. The tool **116** begins to build the notification criteria,
 - a. The developer indicates field type from the notification,
 - b. The developer indicates operator ==,
 - c. The developer indicates comparison to an enumerated type of values "alert", "forecast", "report": a dropdown is generated,
 - d. The developer names the filter part: Alert Type,
 - e. The developer indicates to add another filter part with operator &&.
 - f. The developer indicates field temperatureDiff from the notification,
 - g. The developer indicates operator ==,
 - h. The developer indicates comparison to an enumerated range of numerals 5, 10, 15, 20, 25, 30, 25, 40: a dropdown is generated,
 - i. The developer names the filter part: Temperature Diff,
 - j. The developer indicates to add a final filter part with operator &&.
 - k. The developer indicates field weatherOriginal from the notification,
 - l. The developer indicates operator !=,
 - m. The developer indicates field weatherNew from the notification

44

- i. The tool asks the developer if this is to be a conditional field
- ii. The developer indicates yes: a checkbox is generated
- n. The developer names the filter part: Weather Changes
5. The tool **116** recognizes a set of notification fields that are not included in the notification criteria,
6. The developer indicates that there are additional fields that are to be included in the subscription. They are not dynamically changeable by the user, only specified when a new subscription is set up (static criteria),
7. The developer adds to the filter of part 4 by specifying a freeform entry box for each of the Location, County and State fields of the notification. The mechanism of part 4 is reapplied for logical operators: Editboxes are generated for each,
8. The tool **116** recommends a stacked layout based on the number of fields in static and notification criteria,
9. The developer chooses from the consolidated screen or separate screen approach for modifying notification criteria,
10. The tool **116** generates
 - a. Required subscription messages for alerts+notifications,
 - i. Generates a boolean flag indicating whether the Weather Changes checkbox is selected,
 - b. Required mapping files including all filters,
 - i. A separate filter for the Weather Changes filter part,
 - c. Required unsubscription messages,
 - d. Screens using the stacked layout,
 - i. static criteria fields are labels in all but the add notification screen
 - ii. notification criteria fields are editable in the add notification screen and change notification screen and main screen if using consolidated screens,
 - iii. Labels provided for each filter part are attached to the corresponding editboxes, checkboxes or drop-downs.

MessageContentTarget Pattern **658a**

This pattern **658a** is used to determine what element is affected by a message. The target of a message is typically a screen **402** or data **400** component. Included in this pattern selection **658a** are the issues of: with the definition of a message in hand, how do you specify the effect on the application of receiving a message; you are using the Bottom Up Approach pattern **650a**, or defining your own set of messages; and you want to connect these messages to some element of the application **105** to specify how message reception affects application **105** behaviour. Example design parameters for consideration are: message reception affects the operation of the application **105** in some way; there is a set of standard effects that message reception can have. Based on the above, the pattern **658a** could direct the developer (via the display **206** or other means of the user interface **202**) to, by way of example only:

1. using the message editor **712** with the message definition in hand, the developer may specify that a message:
 - a. generates a data component **400** instance
 - b. is linked to a screen template such that reception of the message updates the screen component **402** with new values and the message is immediately discarded; and
2. the message component **404** development is completed (either in whole or in part) and subsequent editors/viewers **600,602** are either invoked directly or though subsequent wizards **604**.

Example Elements 301

The following are example elements 301 for the deployable application 105 jar file that has been generated by the tool 116 for a Weather Web Service as an example of the data-source 106.

Weather.mapping

The submitted as a text file entitled "11078430_3.txt" in a computer program listing appendix on a compact disc defines example mappings 302 to be used by application gateway AG to tie application messaging over the network 10 with Web Service SOAP messages defined in WSDL. The information and/or data contained 11078430_3.txt is incorporated by reference in its entirety.

Weather.xml

The submitted as a text file entitled "11078430_4.txt" in a computer program listing appendix on a compact disc defines example XML definitions 300 (e.g. representing components 400, 402, 404) for inclusion in the deployable application 105 jar file (to be provisioned to the device 100). The information and/or data contained 11078430_4.txt is incorporated by reference in its entirety.

Weather.script

The following defines example application 105 workflow scripts (e.g. workflow component 406) which can augment the XML definition 300 given above when provisioned to the device 100.

1 0.dtd (DTD (Document Type Definition))

The submitted as a text file entitled "11078430_5.txt" in a computer program listing appendix on a compact disc defines an example document structure for the applications 105. The information and/or data contained 11078430_5.txt is incorporated by reference in its entirety.

Although the disclosure herein has been drawn to one or more exemplary systems and methods, many variations will be apparent to those knowledgeable in the field, including substitution of other appropriate editors 600 and viewers 602 than those used for exemplary purposes in the description of the patterns 648, and such variations are within the scope of the application. Further, it is recognised that the user interface 202 and the display 206 could be defined together as the user interface of the tool 116. Although XML and a subset of ECMAScript are used in the examples provided, other languages and language variants may be used to define component applications. The proposed E4X standard scripting languages could be used in place of ECMAScript, for example. Further, other structured definition languages, than XML described above, can include such as but not limited to Resource Description Framework (RDF), XSLT, and XHTML.

The embodiments of the invention in which an exclusive property or privilege is claimed are defined as the follows:

1. A computing device for coordinating a development of a client application including application components comprising one or more of at least one of a data component, a message component or a screen component, having corresponding component definitions, or a workflow component comprising a series of instructions, the computing device comprising memory for storing instructions and a processor for executing the instructions such that when the instructions are executed the computing device provides:

a first development pattern module configured for interaction with a development environment provided by a computer user interface, the first development pattern module configured for selecting a first pattern from a

plurality of patterns based on an application component type central to the client application, the first development pattern module for guiding a user interface with a plurality of predefined steps to coordinate a development of the application components through user input events via the user interface in accordance with the first pattern; and

at least one first module corresponding to application component types associated with the first pattern, the at least one first module for developing definitions of at least one of the application components through interaction with a data model of the development environment providing a persistent state of the application components, the operation of the first module being coordinated using the plurality of predefined steps communicated through the user interface;

wherein the developed definitions of the at least one of the application components are subsequently coded and assembled as the client application;

wherein the first pattern is selected from the group consisting of: a pattern for generating a suitable application based on an available backend data source messaging description; a pattern for developing the suitable application based on an available backend data source messaging description such that the entire application is developed including data components and screen components; a pattern for developing the application based on an existing database schema; a pattern for developing a standard set of data components that model a particular business domain for the application, a screen pattern for coordinating the development of a screen component as the first component; a message pattern for coordinating a development of a message component as the first component; and a script pattern for coordinating a development of a workflow component as a second component.

2. The computing device of claim 1, wherein the first development pattern module is further configured for selecting a second pattern for guiding a user of the user interface with a portion of the plurality of predefined steps to coordinate the development of the application components through user input events via the user interface, the second pattern chosen from the plurality of patterns based on a further application component type central to the client application.

3. The computing device of claim 2, wherein the first pattern is a primary pattern configured for either directly selecting the module or for indirectly selecting the module through cooperation with the second pattern as a secondary pattern.

4. The computing device of claim 2, wherein the second pattern is a secondary pattern configured for returning coordination of the development of the application components to the first pattern being a primary pattern.

5. The computing device of claim 4, wherein the primary pattern employs the plurality of predefined steps to aid in selecting a second module corresponding to the selected component type different from that of the first module.

6. The computing device of claim 4, wherein the secondary pattern returns the coordination of the development of the application components to another primary pattern different to the primary pattern.

7. The computing device of claim 2, wherein the second pattern is selected from the group consisting of: a screen pattern for coordinating a development of a screen component as the first component; a message pattern for coordinating a development of a message component as the first component; and a script pattern for coordinating a development of a workflow component as the second component.

47

8. The computing device of claim 7, wherein a data component as the first component is developed through applying the second pattern selected from the group consisting of: a screen pattern and a message pattern.

9. The computing device of claim 2, wherein the second pattern is a validator pattern for confirming the data model representation of application messages is consistent with the datasource presentation of messaging operations.

10. The computing device of claim 9, wherein the validator pattern coordinates the operation of the module as a validator module having functionality selected from the group consisting of: workflow integrity of a workflow component; consistency of parameters and field level mappings of the components; consistency of screen control mappings of a screen component; consistency of screen refresh messages of a screen component; confirming a presence of message duplications in a message component; confirming a presence of data duplications in components; and validating a data model representation of datasource messaging relationships.

11. The computing device of claim 2 further comprising a third pattern module for guiding a developer in selection of the first pattern being best suited to a current application development activity, the first pattern selected from the group consisting of: a pattern for generating the suitable application based on an available backend datasource messaging description, a pattern for developing the suitable application based on an available backend datasource messaging description such that the entire application is developed including data components and screen components; a pattern for developing the application based on an existing database schema; and a pattern for developing a standard set of data components that model a particular business domain for the application.

12. The computing device of claim 1, wherein a data component as the first component is developed through applying a first pattern selected from the group consisting of: a screen pattern and a message pattern.

13. The computing device of claim 1, wherein the at least one first module further comprises a command configured for accessing and changing the state of the data model.

14. The computing device of claim 13, wherein the at least one first module is configured for being affected by an event notification from the data model in response to the command.

15. The computing device of claim 1, wherein the at least one first module is selected from the group consisting of: editors and viewers.

16. The computing device of claim 15, wherein the at least one first module is selected from the group consisting of: a screen module; a data module; a message module; a workflow module; a message and data relationship module; a backend visualizer module; a localization module; a script editor module; a testing module, a data and screen relationship module; and a navigation module.

17. The computing device of claim 1, wherein the components are selected from the group consisting of: data components for defining data entities used by the application; screen components for defining the appearance and behavior of the application as displayed on the computing device; message components for defining a format of messages used by the application to communicate with the datasource; and workflow components for defining application processing that occurs when an action is to be performed.

18. The computing device of claim 1, wherein the data model contains model constituents selected from the group consisting of: Data Component Definitions; Global Variable Definitions; Message Component Definitions; Resource Definitions; Screen Component Definitions; Scripts; Style Definitions; and Mapping Descriptors of the data source.

48

19. A computer readable medium storing computer instructions, which when executed by a processor on a computing device cause the computing device to coordinate a development of a client application including application components comprising one or more of at least one of a data component, a message component or a screen component, having corresponding component definitions, or a workflow component comprising a series of instructions, the computer instructions for implementing the steps of:

interacting with a development environment provided by a user interface;

selecting a first pattern from a plurality of patterns based on an application component type central to the client application;

providing guidance on the user interface through the first pattern with a plurality of predefined steps in accordance with the first pattern to coordinate the development of a application components through user input events via the user interface;

selecting a first module corresponding to application component types associated with the first pattern; and

developing by the first module definitions of at least one of the application components through interaction with a data model of a development environment providing a persistent state of the application components, the operation of the first module being coordinated using the plurality of the predefined steps;

wherein the developed definitions of the at least one of the application components are subsequently coded and assembled as the client application;

wherein the first pattern is selected from the group consisting of: a pattern for generating a suitable application based on an available backend data source messaging description; a pattern for developing the suitable application based on an available backend data source messaging description such that the entire application is developed including data components and screen components; a pattern for developing the application based on an existing database schema; a pattern for developing a standard set of data components that model a particular business domain for the application, a screen pattern for coordinating the development of a screen component as the first component; a message pattern for coordinating a development of a message component as the first component; and a script pattern for coordinating a development of a workflow component as a second component.

20. The computer readable medium of claim 19, wherein the first development pattern module is further configured for selecting a second pattern for guiding a user of the user interface with a portion of the plurality of predefined steps to coordinate the development of the application components through user input events via the user interface, the second pattern chosen from the plurality of patterns based on a further application component type central to the client application.

21. The computer readable medium of claim 20, further comprising computer instructions for implementing the step of either selecting directly the first module by the first pattern as a primary pattern or selecting indirectly the module through cooperation with the second pattern as a secondary pattern.

22. The computer readable medium of claim 20, further comprising computer instructions for implementing the step of returning by the second pattern being a secondary pattern coordination of the development of the application components to the first pattern being a primary pattern.

49

23. The computer readable medium of claim 22, wherein the primary pattern employs the plurality of predefined steps to aid in selecting a second module corresponding to the selected component type different from that of the first module.

24. The computer readable medium of claim 22, wherein the secondary pattern returns the coordination of the development of the application components to another primary pattern different to the primary pattern.

25. The computer readable medium of claim 20, wherein the second pattern is selected from the group consisting of: a screen pattern for coordinating a development of a screen component as the first component; a message pattern for coordinating a development of a message component as the first component; and a script pattern for coordinating a development of a workflow component as the second component.

26. The computer readable medium of claim 25, wherein a data component as the first component is developed through applying the second pattern selected from the group consisting of: a screen pattern and a message pattern.

27. The computer readable medium of claim 26 further comprising computer instructions for implementing the step of generating a command by the at least one first module for accessing and changing the state of the data model.

28. The computer readable medium of claim 27 further comprising computer instructions for implementing the step of affecting the at least one first module by an event notification from the data model in response to the command.

29. The computer readable medium of claim 20, wherein the second pattern is a validator pattern for confirming the data model representation of application messages is consistent with the datasource presentation of messaging operations.

30. The computer readable medium of claim 29, wherein the validator pattern coordinates the operation of the module as a validator module having functionality selected from the group consisting of: workflow integrity of a workflow component; consistency of parameters and field level mappings of the components; consistency of screen control mappings of a screen component; consistency of screen refresh messages of a screen component; confirming a presence of message duplications in a message component; confirming a presence of data duplications in components; and validating a data model representation of datasource messaging relationships.

50

31. The computer readable medium of claim 20 further comprising computer instructions for implementing the step of guiding a developer by a third pattern in selection of the first pattern being best suited to the current application development activity, the first pattern selected from the group consisting of: a pattern for generating the suitable application based on an available backend datasource messaging description, a pattern for developing the suitable application based on an available backend datasource messaging description such that the entire application is developed including data components and screen components; a pattern for developing the application based on an existing database schema; and a pattern for developing a standard set of data components that model a particular business domain for the application.

32. The computer readable medium of claim 19, wherein a data component as the first component is developed through applying a first pattern selected from the group consisting of: a screen pattern and a message pattern.

33. The computer readable medium of claim 19, wherein the at least one first module is selected from the group consisting of: editors and viewers.

34. The computer readable medium of claim 33, wherein the at least one first module is selected from the group consisting of: a screen module; a data module; a message module; a workflow module; a message and data relationship module; a backend visualizer module; a localization module; a script editor module; a testing module, a data and screen relationship module; and a navigation module.

35. The computer readable medium of claim 19, wherein the components are selected from the group consisting of: data components for defining data entities used by the application; screen components for defining the appearance and behavior of the application as displayed on the computing device; message components for defining a format of messages used by the application to communicate with the datasource; and workflow components for defining application processing that occurs when an action is to be performed.

36. The computer readable medium of claim 19, wherein the data model contains model constituents selected from the group consisting of: Data Component Definitions; Global Variable Definitions; Message Component Definitions; Resource Definitions; Screen Component Definitions; Scripts; Style Definitions; and Mapping Descriptors of the data source.

* * * * *

UNITED STATES PATENT AND TRADEMARK OFFICE
CERTIFICATE OF CORRECTION

PATENT NO. : 7,657,868 B2
APPLICATION NO. : 11/078430
DATED : February 2, 2010
INVENTOR(S) : Shenfield et al.

Page 1 of 1

It is certified that error appears in the above-identified patent and that said Letters Patent is hereby corrected as shown below:

On the Title Page:

The first or sole Notice should read --

Subject to any disclaimer, the term of this patent is extended or adjusted under 35 U.S.C. 154(b)
by 774 days.

Signed and Sealed this

Twenty-eighth Day of December, 2010

A handwritten signature in black ink that reads "David J. Kappos". The signature is written in a cursive, flowing style.

David J. Kappos
Director of the United States Patent and Trademark Office