



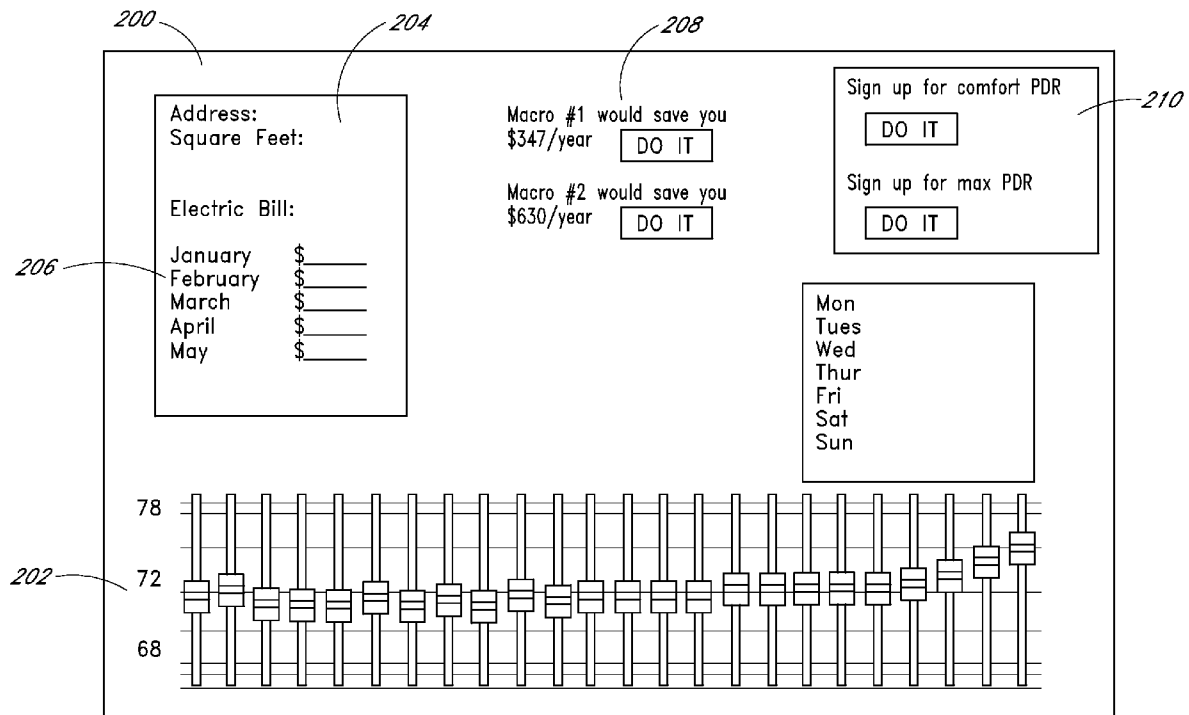
US 20100262299A1

(19) **United States**(12) **Patent Application Publication**
Cheung et al.(10) **Pub. No.: US 2010/0262299 A1**(43) **Pub. Date: Oct. 14, 2010**(54) **SYSTEM AND METHOD FOR USING
RAMPED SETPOINT TEMPERATURE
VARIATION WITH NETWORKED
THERMOSTATS TO IMPROVE EFFICIENCY****Publication Classification**(51) **Int. Cl.**
G05B 15/00 (2006.01)
G05D 23/00 (2006.01)
(52) **U.S. Cl.** **700/278; 236/51**(76) Inventors: **Leo Cheung**, Sunnyvale, CA (US);
Scott Douglas Hublou, Redwood
City, CA (US); **John Douglas**
Steinberg, Millbrae, CA (US)

Correspondence Address:

KNOBBE MARTENS OLSON & BEAR LLP
2040 MAIN STREET, FOURTEENTH FLOOR
IRVINE, CA 92614 (US)(21) Appl. No.: **12/498,142**(22) Filed: **Jul. 6, 2009****Related U.S. Application Data**(60) Provisional application No. 61/133,994, filed on Jul. 7,
2008.(57) **ABSTRACT**

The invention comprises systems and methods for ramping setpoints on thermostats controlling HVAC systems. At least one thermostat is located inside a structure and is used to control an HVAC system in the structure. At least one remote processor is in communication with said thermostat and at least one database stores data reported by the thermostat. At least one processor compares the outside temperature at least one location and at least one point in time to information reported to the remote processor from the thermostat. The remote processor ramps the setpoint on the thermostat so as to reduce the average spread between inside temperature and outside temperature in order to reduce energy consumption with affecting comfort. The remote processor takes into account the effect of weather conditions and occupant preferences in determining whether and when to ramp setpoints.



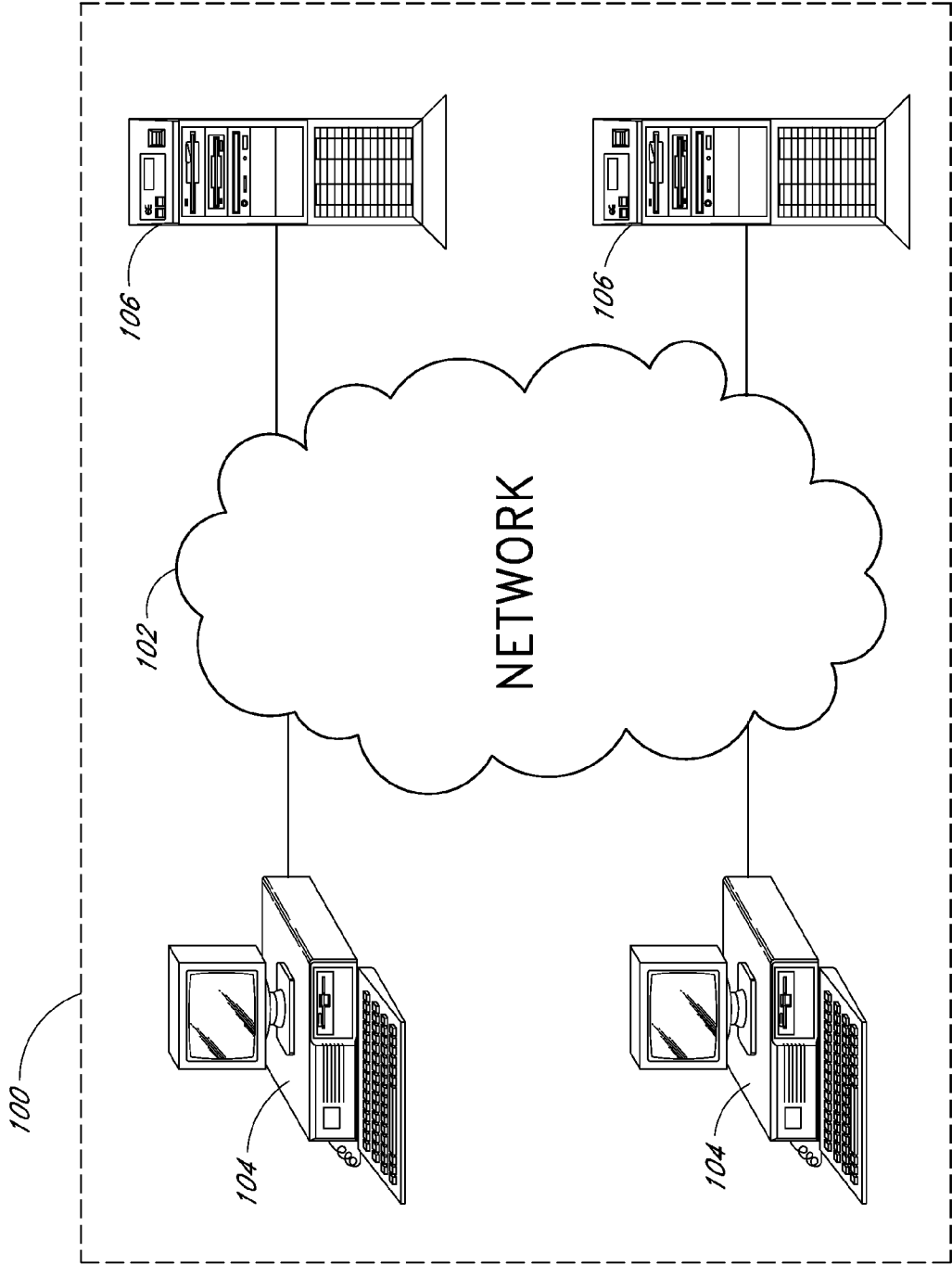


FIG. 1

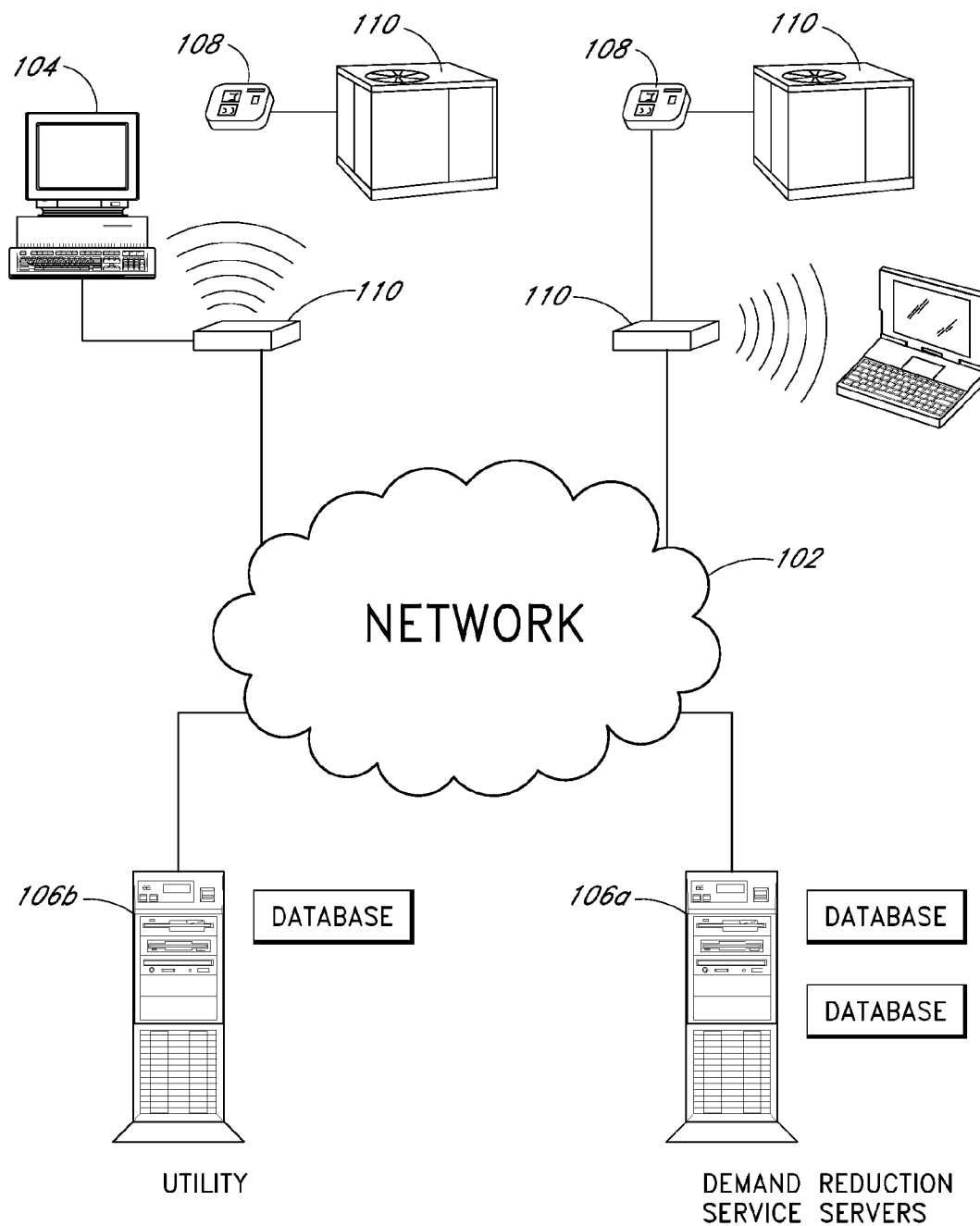


FIG. 2

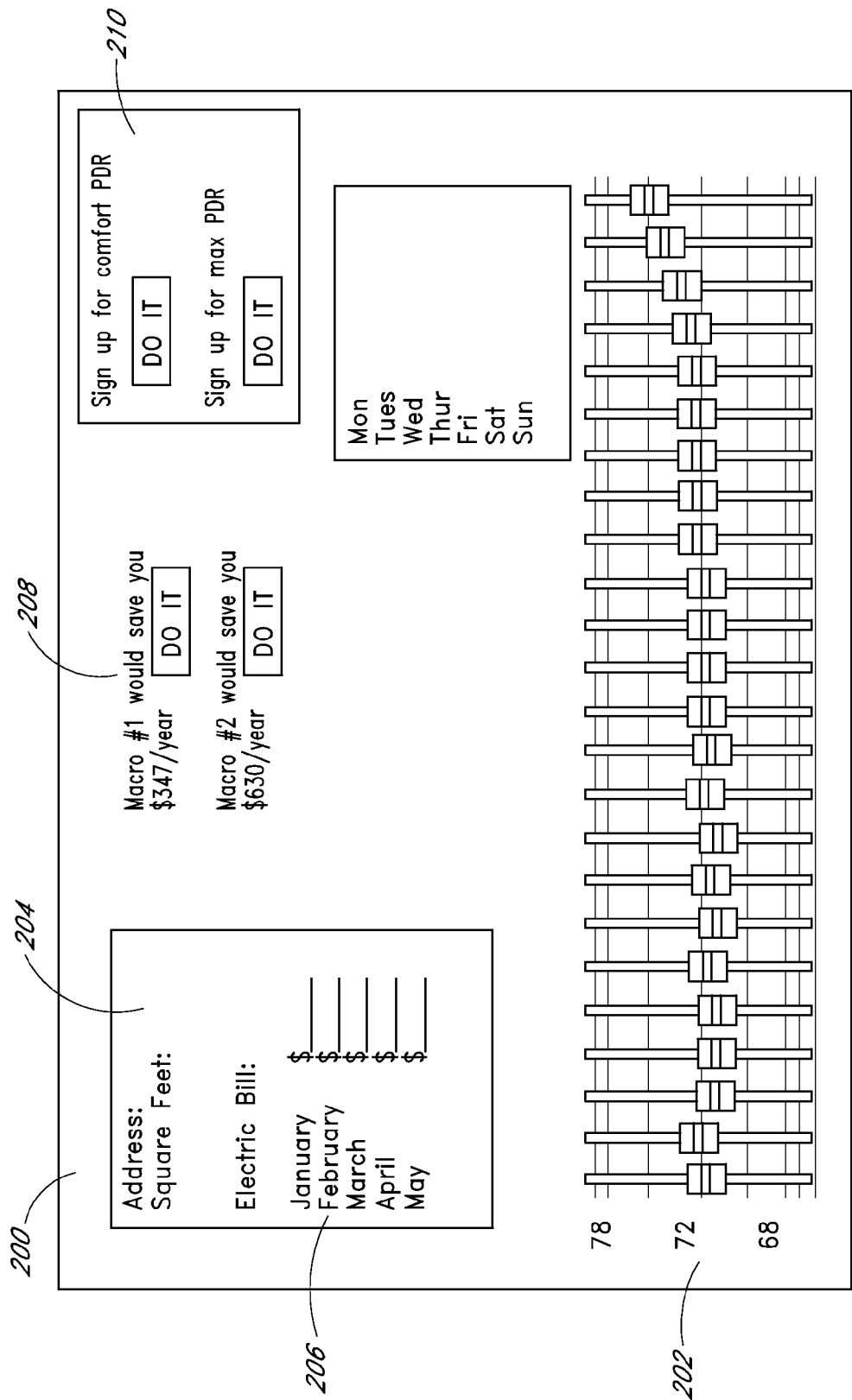


FIG. 3

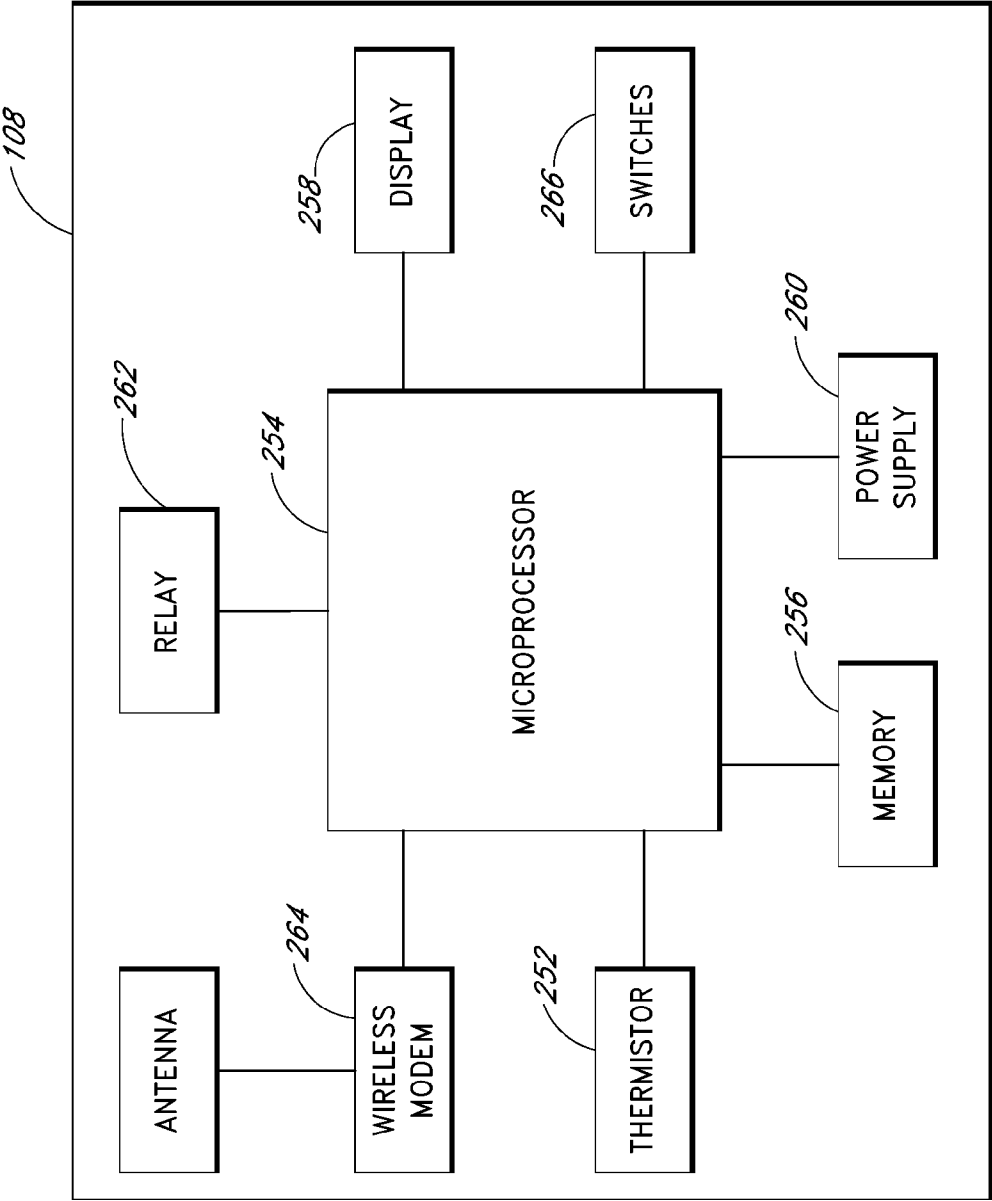
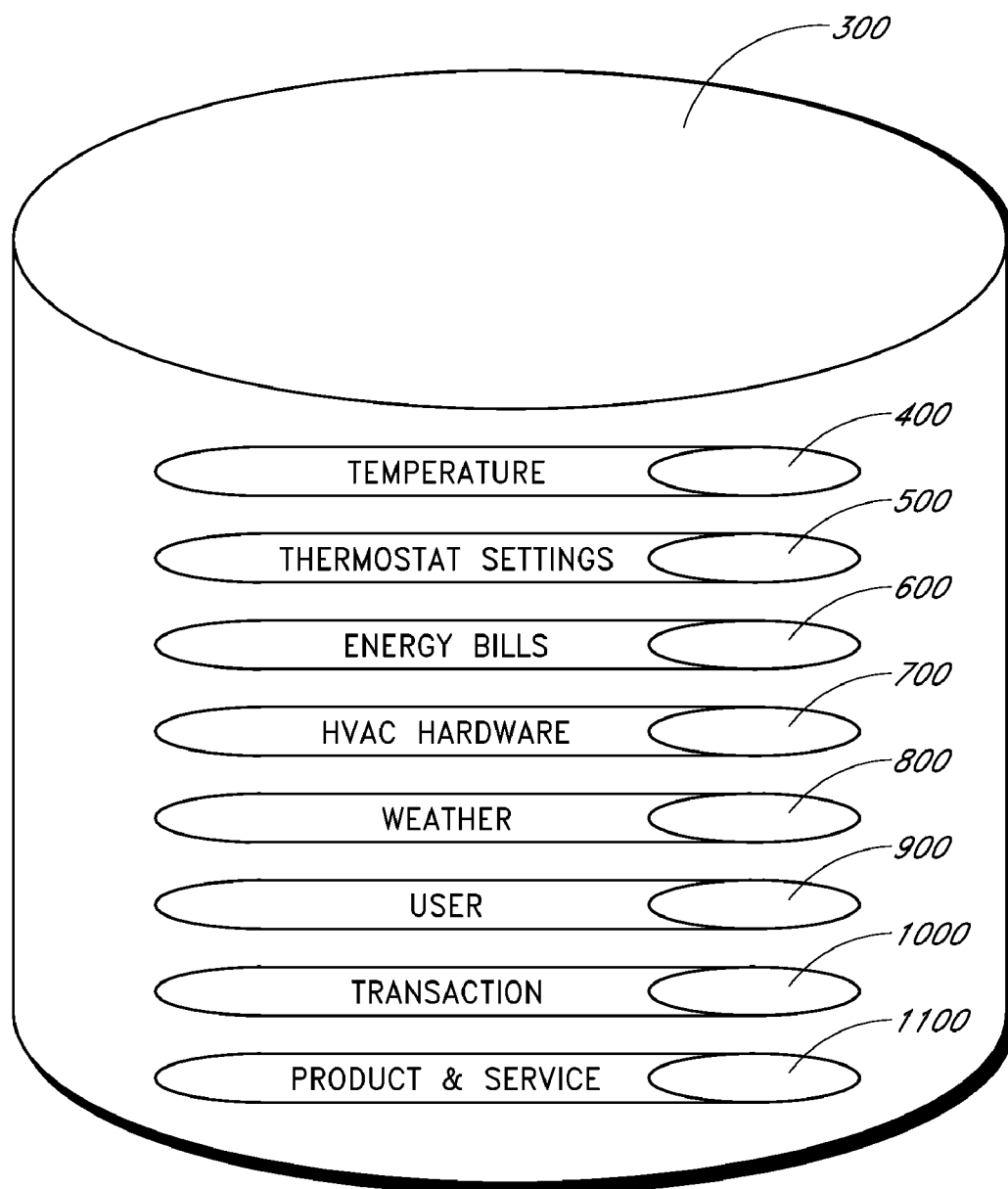


FIG. 4

*FIG. 5*

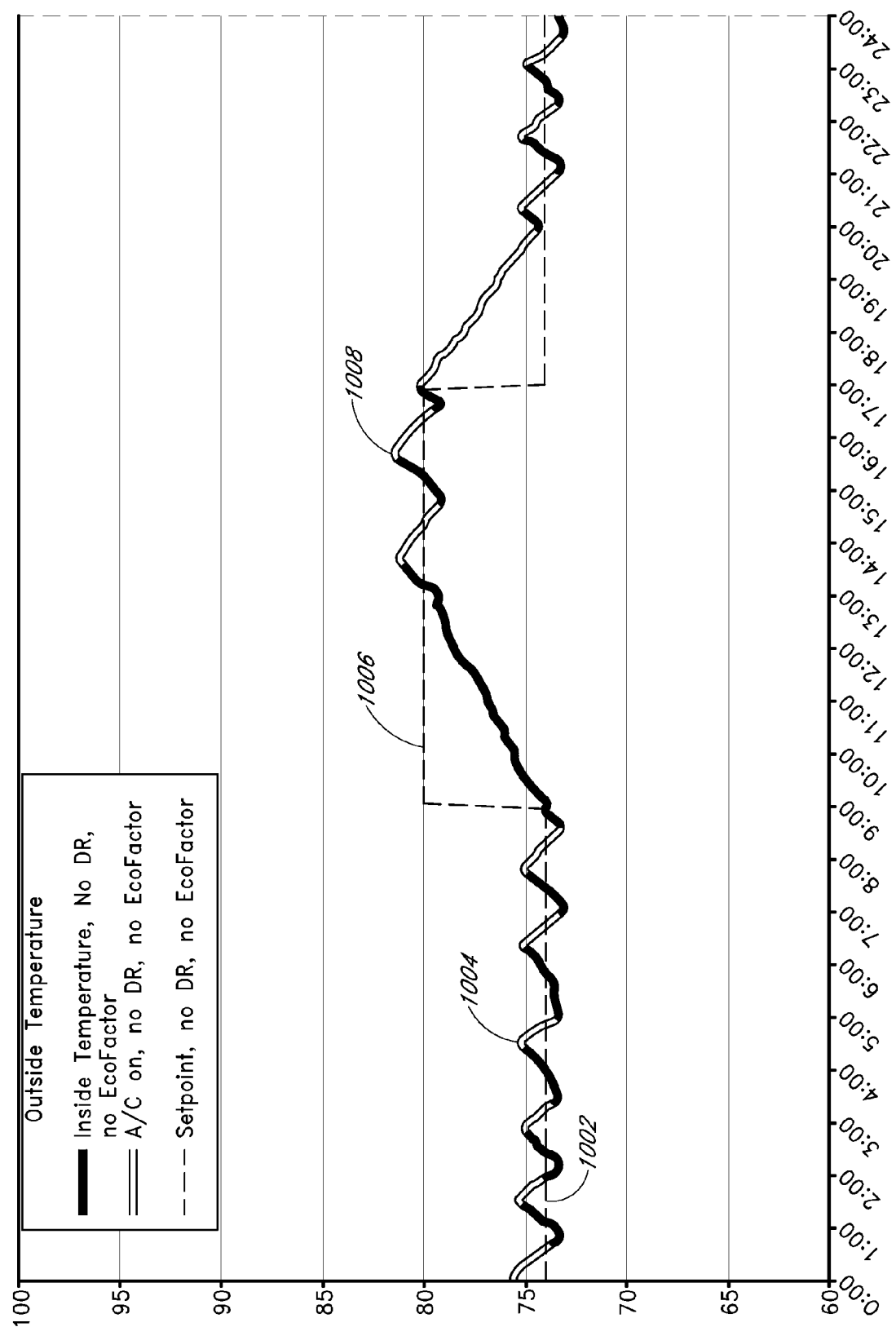
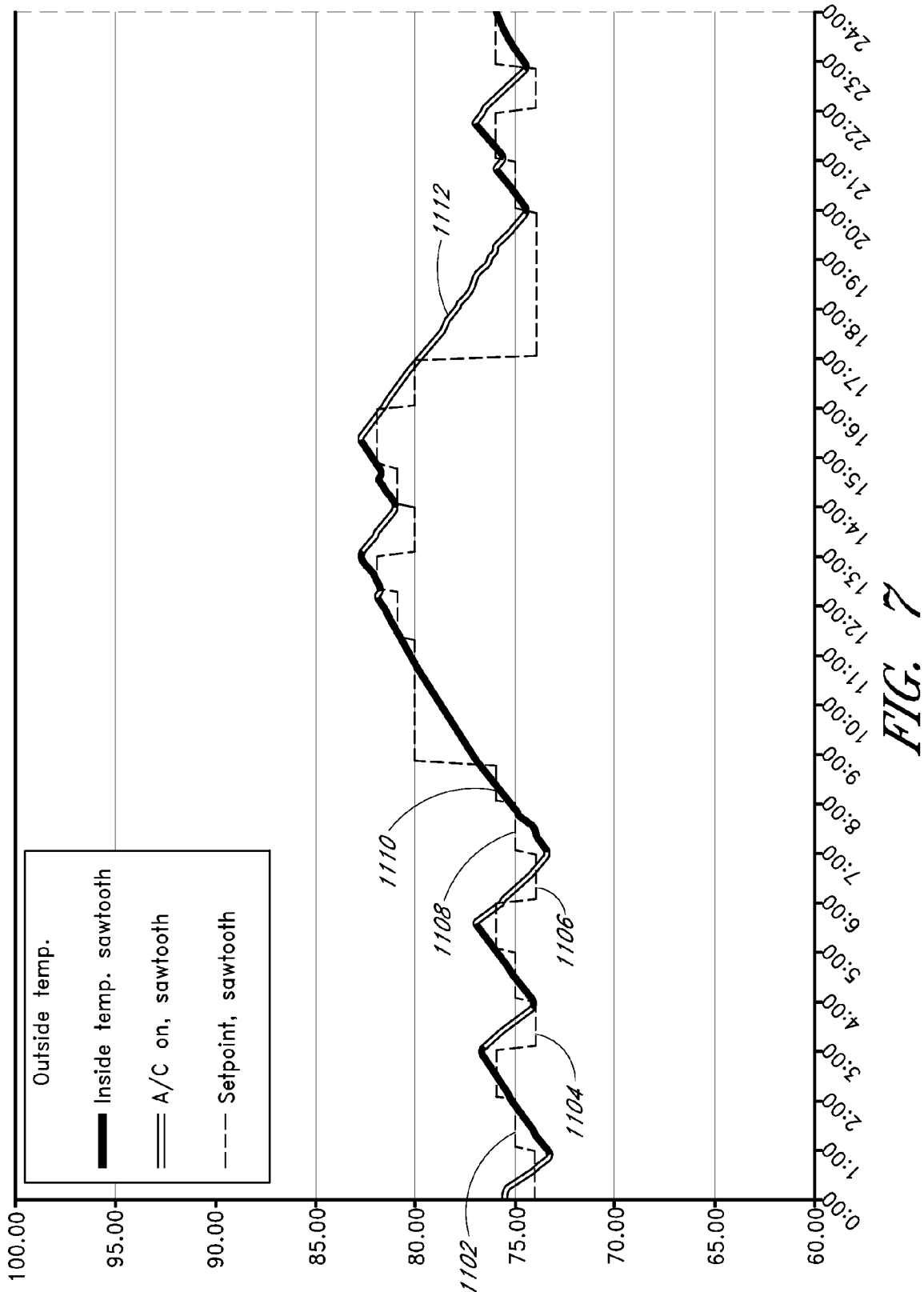


FIG. 6



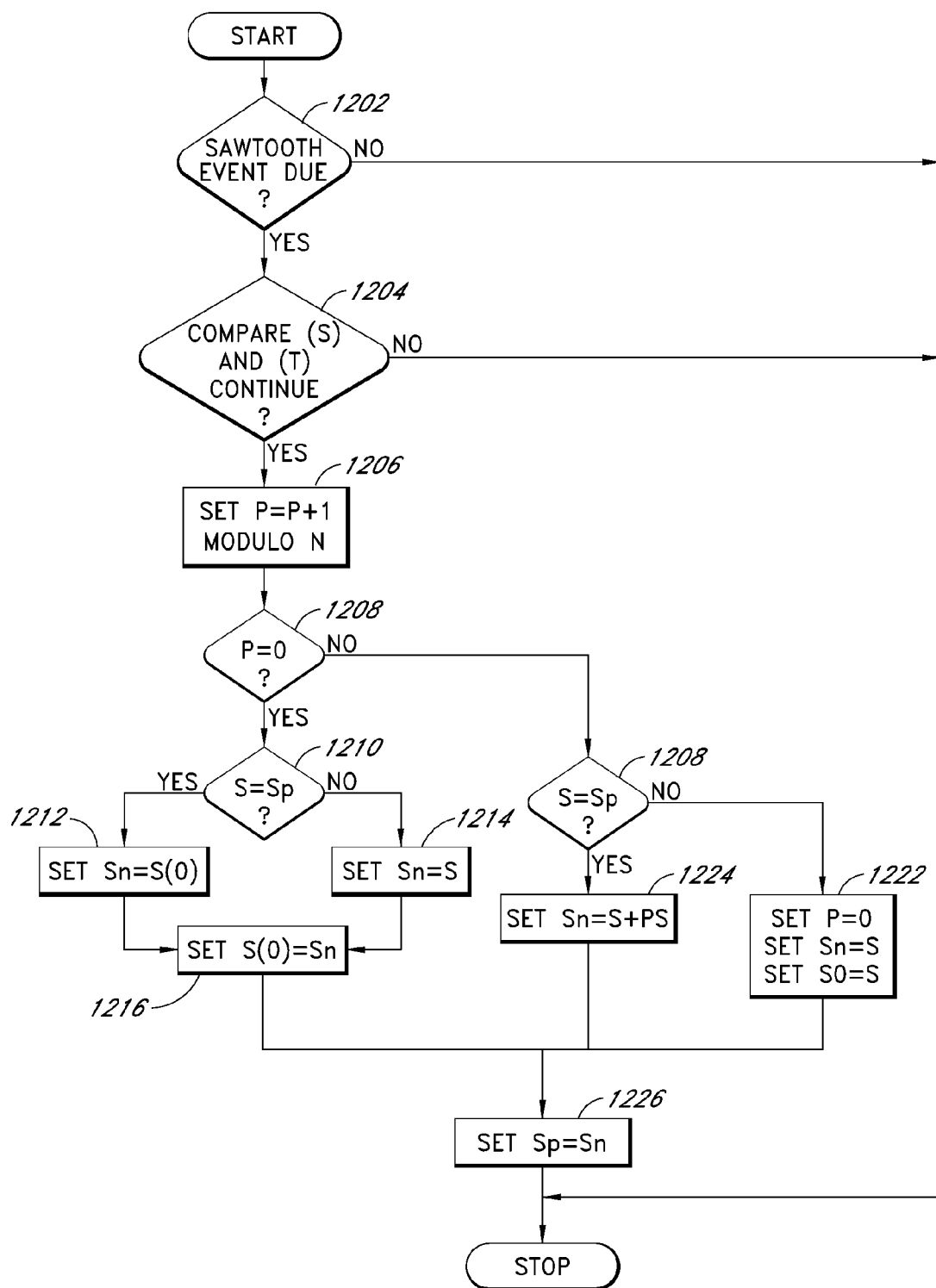


FIG. 8

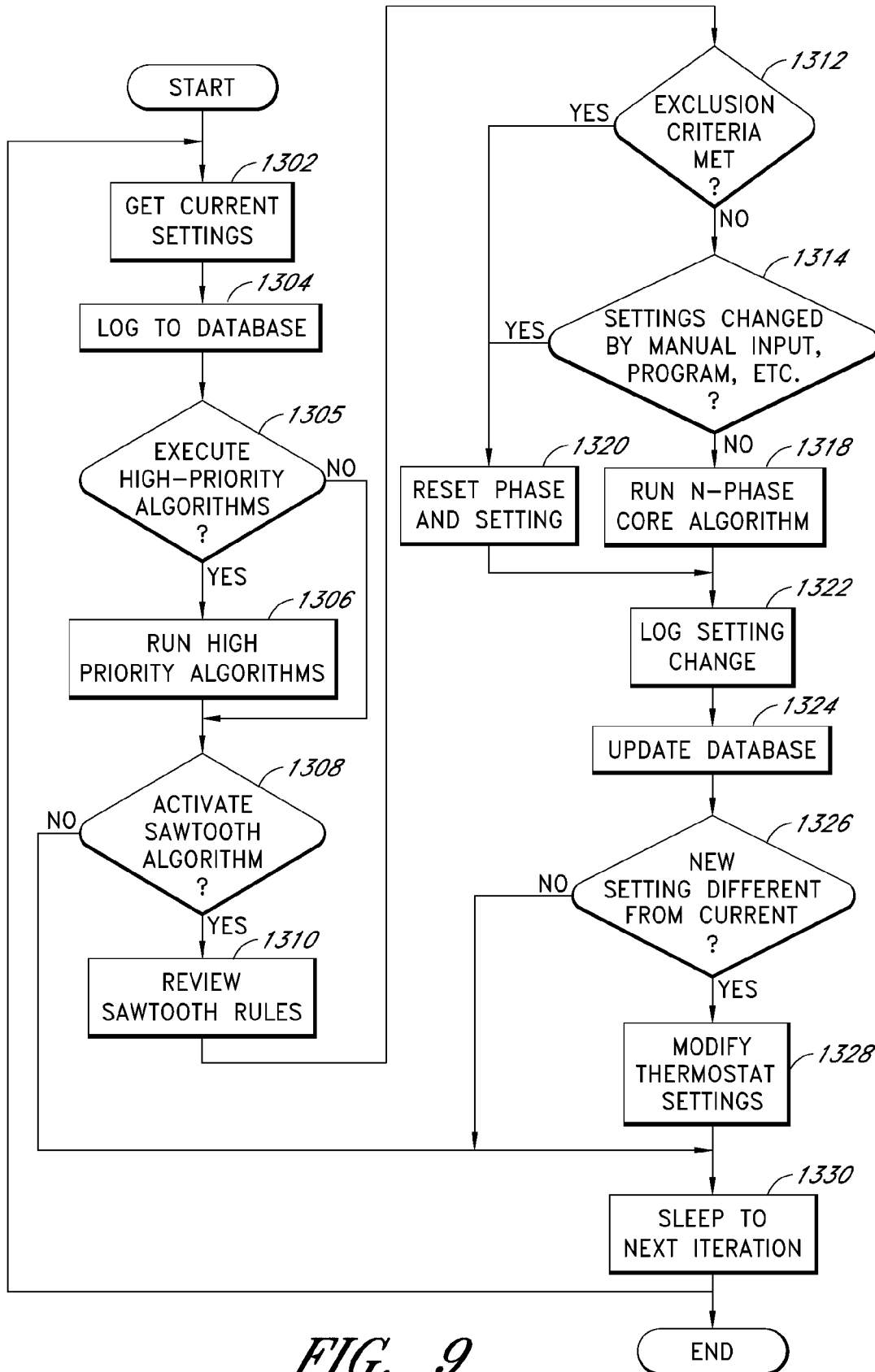


FIG. 9

SYSTEM AND METHOD FOR USING RAMPED SETPOINT TEMPERATURE VARIATION WITH NETWORKED THERMOSTATS TO IMPROVE EFFICIENCY

CROSS-REFERENCE TO RELATED APPLICATIONS

[0001] This application claims priority to U.S. Provisional Application No. 61/133,994, filed Jul. 7, 2008, the entirety of which is incorporated herein by reference and is to be considered part of this specification.

BACKGROUND OF THE INVENTION

[0002] 1. Field of the Invention

[0003] This invention relates to the use of thermostatic HVAC controls that are connected to a computer network. More specifically, the present invention pertains to application of specific adaptive waveforms to the setpoints programmed into thermostats in order to reduce energy consumption without a subjective loss of comfort.

[0004] 2. Background

[0005] Heating and cooling systems for buildings (heating, ventilation and cooling, or HVAC systems) have been controlled for decades by thermostats. At the most basic level, a thermostat includes a means to allow a user to set a desired temperature, a means to sense actual temperature, and a means to signal the heating and/or cooling devices to turn on or off in order to try to change the actual temperature to equal the desired temperature. The most basic versions of thermostats use components such as a coiled bi-metallic spring to measure actual temperature and a mercury switch that opens or completes a circuit when the spring coils or uncoils with temperature changes. More recently, electronic digital thermostats have become prevalent. These thermostats use solid-state devices such as thermistors or thermal diodes to measure temperature, and microprocessor-based circuitry to control the switch and to store and operate based upon user-determined protocols for temperature vs. time.

[0006] These programmable thermostats generally offer a very restrictive user interface, limited by the cost of the devices, the limited real estate of the small wall-mounted boxes, and the inability to take into account more than two variables: the desired temperature set by the user, and the ambient temperature sensed by the thermostat. Users can generally only set one series of commands per day, and in order to change one parameter (e.g., to change the late-night temperature) the user often has to cycle through several other parameters by repeatedly pressing one or two buttons.

[0007] Because the interface of programmable thermostats is so poor, the significant theoretical savings that are possible with them (sometimes cited as 25% of heating and cooling costs) are rarely realized. In practice, studies have found that more than 50% of users never program their thermostats at all. Significant percentages of the thermostats that are programmed are programmed sub-optimally, in part because, once programmed, people tend not to re-invest the time needed to change the settings very often.

[0008] A second problem with standard programmable thermostats is that they represent only a small evolutionary step beyond the first, purely mechanical thermostats. Like the first thermostats, they only have two input signals—ambient temperature and the preset desired temperature. The entire advance with programmable thermostats is that they can shift

between multiple present temperatures at different times without real-time involvement of a human being.

[0009] Because most thermostats control HVAC systems that do not offer infinitely variable output, traditional thermostats are designed to permit the temperature as seen by the thermostat to vary above and below the setpoint to prevent the HVAC system from constantly and rapidly cycling on and off, which is inefficient and harmful to the HVAC system. The temperature range in which the thermostat allows the controlled environment to drift is known as both the dead zone and, more formally, the hysteresis zone. The hysteresis zone is frequently set at ± 1 degree Fahrenheit. Thus if the setpoint is 68 degrees, in the heating context the thermostat will allow the inside temperature to fall to 67 degrees before turning the heating system on, and will allow it to rise to 69 degrees before turning it off again.

[0010] Standard programmable thermostats are all designed with the same basic underlying premise: that the comfort of building occupants is maximized by maintaining a relatively constant temperature, at least for the duration of a given setpoint, and with the variations inherent in using a hysteresis band to trade comfort off against efficient operation and durability. That is, if a programmable thermostat has been programmed to maintain a temperature of 68 degrees Fahrenheit for 8 hours, it will cycle the HVAC system as needed to maintain that temperature.

[0011] However, academic research has shown that humans tend not to notice changes in temperature if (a) they are below a certain magnitude and (b) if the rate of change is sufficiently slow. For example a 1978 study found that people did not notice ramps less than 0.5° C./h (0.9° F./h). A 2004 study found that and that ramps up to 1.5° C./h (2.7° F./h) are unlikely to cause discomfort.

[0012] Because energy consumption is directly proportional to setpoint—that is, the further a given setpoint diverges from the balance point (the inside temperature assuming no HVAC activity) in a given house under given conditions, the higher energy consumption will be to maintain temperature at that setpoint), energy will be saved by any strategy that over a given time frame lowers the average heating setpoint or raises the cooling setpoint. It is therefore possible to save energy by adopting a strategy that takes advantage of human insensitivity to slow temperature ramping by incorporating a user's desired setpoint within the range of the ramp, but setting the average target temperature below the desired setpoint in the case of heating, and above it in the case of cooling. For example, a ramped summer setpoint that consisted of a repeated pattern of three phases of equal length set at 72° F., 73° F., and 74° F. would create an effective average setpoint of 73° F., but would generally be experienced by occupants as yielding equivalent comfort as in a room set at a constant 72° F. Energy savings resulting from this approach have been shown to be in the range of 4-6%.

[0013] It would be advantageous to create a temperature control system that would automatically generate optimized ramped setpoints that could save energy without compromising the comfort of the occupants. It would also be advantageous to create a temperature control system that could incorporate adaptive algorithms that could automatically determine when the ramped setpoints should not be applied due to a variety of exogenous conditions that make application of such ramped setpoints undesirable.

SUMMARY OF THE INVENTION

[0014] In one embodiment, the invention comprises a thermostat attached to an HVAC system, a local network connect-

ing the thermostat to a larger network such as the Internet, and one or more additional thermostats attached to the network, and a server in bi-directional communication with a plurality of such thermostats. The server logs the ambient temperature sensed by each thermostat vs. time and the signals sent by the thermostats to their HVAC systems. The server preferably also logs outside temperature and humidity data for the geographic locations for the buildings served by the connected HVAC systems. Such information is widely available from various sources that publish detailed weather information based on geographic areas such as by ZIP code. The server uses this data to determine optimum application of an n-phase ramped setpoint algorithm in order to change the actual average setpoint over time without affecting the perceived temperature.

[0015] At least one embodiment of the invention comprises the steps of measuring the temperature inside a conditioned space; comparing said inside temperature to the desired setpoint for such conditioned space; evaluating the schedule for setpoint changes; determining whether the scheduled setpoint has been changed; setting the actual setpoint to the desired setpoint; determining the number of phases for actual setpoints; setting actual setpoints to increments away from the desired setpoint as additional phases, where each successive setpoint is further from said desired setpoint than the previous setpoint; and returning to the desired setpoint after said determined number of setpoints has been reached.

[0016] At least one embodiment of the invention comprises the steps of evaluating the temperature inside a conditioned environment; evaluating weather conditions outside the conditioned environment; setting a first target inside temperature for a specified time interval; setting at least a second target inside temperature for a specified time interval, where said second target temperature differs from said first target temperature by a specified amount; determining whether said variation of temperature setpoints is appropriate given said outside weather conditions; and cycling through said two or more target temperatures.

BRIEF DESCRIPTION OF THE DRAWINGS

[0017] FIG. 1 shows an example of an overall environment in which an embodiment of the invention may be used.

[0018] FIG. 2 shows a high-level illustration of the architecture of a network showing the relationship between the major elements of one embodiment of the subject invention.

[0019] FIG. 3 shows an embodiment of the website to be used as part of the subject invention.

[0020] FIG. 4 shows a high-level schematic of the thermostat used as part of the subject invention.

[0021] FIG. 5 shows one embodiment of the database structure used as part of the subject invention.

[0022] FIG. 6 shows the conventional programming of a programmable thermostat over a 24-hour period.

[0023] FIG. 7 shows the programming of a programmable thermostat over a 24-hour period using ramped setpoints.

[0024] FIG. 8 shows the steps required for the core function of the ramped setpoint algorithm.

[0025] FIG. 9 shows a flowchart listing steps in the process of deciding whether to implement the ramped setpoint algorithm.

DETAILED DESCRIPTION OF THE PREFERRED EMBODIMENT

[0026] FIG. 1 shows an example of an overall environment 100 in which an embodiment of the invention may be used.

The environment 100 includes an interactive communication network 102 with computers 104 connected thereto. Also connected to network 102 are one or more server computers 106, which store information and make the information available to computers 104. The network 102 allows communication between and among the computers 104 and 106.

[0027] Presently preferred network 102 comprises a collection of interconnected public and/or private networks that are linked to together by a set of standard protocols to form a distributed network. While network 102 is intended to refer to what is now commonly referred to as the Internet, it is also intended to encompass variations which may be made in the future, including changes additions to existing standard protocols.

[0028] When a user of the subject invention wishes to access information on network 102, the user initiates connection from his computer 104. For example, the user invokes a browser, which executes on computer 104. The browser, in turn, establishes a communication link with network 102. Once connected to network 102, the user can direct the browser to access information on server 106.

[0029] One popular part of the Internet is the World Wide Web. The World Wide Web contains a large number of computers 104 and servers 106, which store HyperText Markup Language (HTML) documents capable of displaying graphical and textual information. HTML is a standard coding convention and set of codes for attaching presentation and linking attributes to informational content within documents.

[0030] The servers 106 that provide offerings on the World Wide Web are typically called websites. A website is often defined by an Internet address that has an associated electronic page. Generally, an electronic page is a document that organizes the presentation of text graphical images, audio and video. Servers 106 also provide a variety of services other than serving websites. These services, such as communicating with and controlling remote devices as described below, may be delivered via Internet Protocol or other means for communicating across a network.

[0031] In addition to the Internet, the network 102 can comprise a wide variety of interactive communication media. For example, network 102 can include local area networks, interactive television networks, telephone networks, wireless data systems, two-way cable systems, and the like.

[0032] In one embodiment, computers 104 and servers 106 are conventional computers that are equipped with communications hardware such as modem or a network interface card. The computers include processors such as those sold by Intel and AMD. Other processors may also be used, including general-purpose processors, multi-chip processors, embedded processors and the like.

[0033] Computers 104 can also be handheld and wireless devices such as personal digital assistants (PDAs), cellular telephones and other devices capable of accessing the network.

[0034] Computers 104 utilize a browser configured to interact with the World Wide Web. Such browsers may include Microsoft Explorer, Mozilla, Firefox, Opera or Safari. They may also include browsers used on handheld and wireless devices.

[0035] The storage medium may comprise any method of storing information. It may comprise random access memory (RAM), electronically erasable programmable read only

memory (EEPROM), read only memory (ROM), hard disk, floppy disk, CD-ROM, optical memory, or other method of storing data.

[0036] Computers **104** and **106** may use an operating system such as Microsoft Windows, Apple Mac OS, Linux, Unix or the like.

[0037] Computers **106** may include a range of devices that provide information, sound, graphics and text, and may use a variety of operating systems and software optimized for distribution of content via networks.

[0038] FIG. 2 illustrates in further detail the architecture of the specific components connected to network **102** showing the relationship between the major elements of one embodiment of the subject invention. Attached to the network are thermostats **108** and computers **104** of various users. Connected to thermostats **108** are HVAC units **110**. The HVAC units may be conventional air conditioners, heat pumps, or other devices for transferring heat into or out of a building. Each user is connected to the server **106** via wired or wireless connection such as Ethernet or a wireless protocol such as IEEE 802.11, a gateway **110** that connects the computer and thermostat to the Internet via a broadband connection such as a digital subscriber line (DSL) or other form of broadband connection to the World Wide Web. Server **106** contains the content to be served as web pages and viewed by computers **104**, as well as databases containing information used by the servers.

[0039] In the currently preferred embodiment, the website **200** includes a number of components accessible to the user, as shown in FIG. 3. Those components may include a means to enter temperature settings **202**, a means to enter information about the user's home **204**, a means to enter the user's electricity bills **206**, means to calculate energy savings that could result from various thermostat-setting strategies **208**, and means to enable and choose between various arrangements **210** for demand reduction with their electric utility provider as intermediated by the demand reduction service provider.

[0040] FIG. 4 shows a high-level block diagram of thermostat **108** used as part of the subject invention. Thermostat **108** includes temperature sensing means **252**, which may be a thermistor, thermal diode or other means commonly used in the design of electronic thermostats. It includes a microprocessor **254**, memory **256**, a display **258**, a power source **260**, a relay **262**, which turns the HVAC system on and off in response to a signal from the microprocessor, and contacts by which the relay is connected to the wires that lead to the HVAC system. To allow the thermostat to communicate bi-directionally with the computer network, the thermostat also includes means **264** to connect the thermostat to a local computer or to a wireless network. Such means could be in the form of Ethernet, wireless protocols such as IEEE 802.11, IEEE 802.15.4, Bluetooth, cellular systems such as CDMA, GSM and GPRS, or other wireless protocols. The thermostat **250** may also include controls **266** allowing users to change settings directly at the thermostat, but such controls are not necessary to allow the thermostat to function.

[0041] The data used to generate the content delivered in the form of the website is stored on one or more servers **106** within one or more databases. As shown in FIG. 5, the overall database structure **300** may include temperature database **400**, thermostat settings database **500**, energy bill database **600**, HVAC hardware database **700**, weather database **800**, user database **900**, transaction database **1000**, product and

service database **1100** and such other databases as may be needed to support these and additional features.

[0042] The website **200** will allow users of connected thermostats **250** to create personal accounts. Each user's account will store information in database **900**, which tracks various attributes relative to users of the site. Such attributes may include the make and model of the specific HVAC equipment in the user's home; the age and square footage of the home, the solar orientation of the home, the location of the thermostat in the home, the user's preferred temperature settings, whether the user is a participant in a demand reduction program, etc.

[0043] As shown in FIG. 3, the website **200** will permit thermostat users to perform through the web browser substantially all of the programming functions traditionally performed directly at the physical thermostat, such as temperature set points, the time at which the thermostat should be at each set point, etc. Preferably the website will also allow users to accomplish more advanced tasks such as allow users to program in vacation settings for times when the HVAC system may be turned off or run at more economical settings, and set macros that will allow changing the settings of the temperature for all periods with a single gesture such as a mouse click.

[0044] In addition to using the system to allow better signaling and control of the HVAC system, which relies primarily on communication running from the server to the thermostat, the bi-directional communication will also allow the thermostat **108** to regularly measure and send to the server information about the temperature in the building. By comparing outside temperature, inside temperature, thermostat settings, cycling behavior of the HVAC system, and other variables, the system will be capable of numerous diagnostic and controlling functions beyond those of a standard thermostat.

[0045] The system installed in a subscriber's home may optionally include additional temperature sensors at different locations within the building. These additional sensors may be connected to the rest of the system via a wireless system such as 802.11 or 802.15.4, or may be connected via wires. Additional temperature and/or humidity sensors may allow increased accuracy of the system, which can in turn increase user comfort or energy savings.

[0046] FIG. 6 represents the conventional programming of a thermostat and the resulting behavior of a home's HVAC system in the air conditioning context. The morning setpoint of 74 degrees **1002** remains constant from midnight until 9:00 AM, and the inside temperature **1004** varies more or less within the limits of the hysteresis band during that entire period. When the setpoint changes to 80 degrees **1006**, the inside temperature **1008** varies within the hysteresis band around the new setpoint, and so on. Whether the average temperature is equal to, greater or less than the nominal setpoint will depend on weather conditions, the dynamic signature of the structure, and the efficiency and size of the HVAC system. But in most cases the average temperature will be at least roughly equivalent to the nominal setpoint.

[0047] FIG. 7 represents implementation of three-phase ramped setpoint **1102** derived from the same user preferences as manifested by the settings shown in FIG. 6. Because 74 degrees, the setpoint requested by the user **1104** is the lowest of the three discrete steps **1106**, **1108**, **1110**, rather than the middle step, the average inside temperature **1112** will be

roughly one degree warmer than the average temperature without use of the ramped setpoints.

[0048] In order to implement such ramped setpoints automatically, algorithms may be created. These algorithms may be generated on remote server **106** and the setpoint changes can be transmitted to a given thermostat on a just-in-time basis or, if the thermostat **108** is capable of storing future settings, they may be transferred in batch mode to such thermostats. Basic parameters used to generate such algorithms include:

[0049] the number of discrete phases to be used;

[0050] the temperature differential associated with each phase; and

[0051] the duration of each phase

[0052] In order to increase user comfort and thus maximize consumer acceptance, additional parameters may be considered, including:

[0053] time of day

[0054] outside weather conditions

[0055] recent history of manual inputs

[0056] recent pre-programmed setpoint changes.

[0057] Time of day may be relevant because, for example, if the home is typically unoccupied at a given time, there is no need for perceptual programming. Outside weather is relevant because comfort is dependent not just on temperature as sensed by a thermostat, but also includes radiant differentials. On extremely cold days, even if the inside dry-bulb temperature is within normal comfort range, radiant losses due to cold surfaces such as single-glazed windows can cause subjective discomfort; thus on such days occupants may be more sensitive to ramping. Recent manual inputs (e.g., programming overrides) may create situations in which exceptions should be taken; depending on the context, recent manual inputs may either suspend the ramping of setpoints or simply alter the baseline temperature from which the ramping takes place.

[0058] FIG. 8 shows the steps used in the core ramped setpoint algorithm into the context of a remotely managed thermostat system. In step **1202** the application determines whether to instantiate the algorithm based upon external scheduling criteria. In step **1204** the application running on a remote server retrieves from the thermostat the data generated by or entered into the thermostat, including current temperature settings, HVAC status and inside temperature. The algorithm performs preliminary logical tests at that point to determine whether further processing is required. For example, in the heating context, if the inside temperature as reported by the thermostat **108** is more than 1 degree higher than the current setpoint, the algorithm may determine that running the ramped setpoint program will have no effect and therefore terminate. In step **1206** the algorithm advances to the next phase from the most recent phase; i.e., if the algorithm is just starting, the phase changes from “0” to “1”; if it has just completed the third phase of a three-phase ramp, the phase will change from “2” to “0”. In step **1208** the application determines if the current phase is “0”. If it is, then in step **1210** the algorithm determines whether current setpoint equals the setpoint in the previous phase. If so, which implies no manual overrides or other setpoint adjustments have occurred during the most recent phase, then in step **1212** the algorithm sets the new setpoint back to the previous phase “0” setpoint. If not, then in step **1214**, the algorithm keeps the current temperature setting as setpoint for this new phase. In step **1216**, the algorithm logs the resulting new setpoint as the new phase “0” setpoint for use in subsequent phases.

[0059] Returning to the branch after step **1208**, if the current phase at that point is not phase “0”, then in step **1220**, the algorithm determines whether the current setpoint is equal to the setpoint temperature in the previous phase. If not, which implies setpoints have been adjusted by the house occupants, thermostat schedules, or other events, then in step **1222**, the application resets the phase to “0”, resets the new setpoint associated with phase “0” to equal the current temperature setting, and sets the current setting to that temperature. Alternatively, if the current temperature setting as determined in step **1220** is equal to the setpoint in the previous phase, then in step **1224** new setpoint is made to equal current setpoint plus the differential associated with each phase change. In step **1226** the “previous-phase setpoint” variable is reset to equal the new setpoint in anticipation of its use during a subsequent iteration.

[0060] FIG. 9 shows one embodiment of the overall control application implementing the algorithm described in FIG. 8. In step **1302**, the control application retrieves the current setting from the thermostat. In step **1304**, the setting is logged in database **300**. In step **1305**, the control program determines whether other algorithms that have higher precedence than the ramped setpoint algorithm are to be run. If another algorithm is to be run prior to the ramped setpoint algorithm, then the other program is executed in step **1306**. If there are no alternate algorithms that should precede the ramped setpoint application then in step **1308**, the control program determines whether the thermostat has been assigned to execute the ramped setpoint program. If not, the control program skips the remaining actions in the current iteration. If the program is set to run, then in step **1310** the algorithm retrieves from database **300** the rules and parameters governing the implementation of the algorithm for the current application of the program. In step **1312**, the algorithm determines whether one or more conditions that preclude application of the algorithm, such as extreme outside weather conditions, whether the home is likely to be occupied, etc. If any of the exclusionary conditions apply, the application skips execution of the ramped setpoint algorithm for the current iteration. If not, the application proceeds to step **1314** in which the application determines whether the setpoint has been altered by manual overrides, thermostat setback schedule changes, or other algorithms as compared to the previous value as stored in database **300**. If setpoint has been altered, the application proceeds to step **1320** discussed below. In step **1318**, the program described in FIG. 8, is executed. In step **1320**, the application resets the phase to “0”. Certain temperature setting variables are reset in anticipation of their use in subsequent phases. These variables include the new phase 0 temperature setting which is anchored to the current actual temperature setting, and the new previous-phase setpoint which will be used for identifying setpoint overrides in the subsequent phase.

[0061] In step **1322**, the system records the changes to the thermostat settings to database **300**. In step **1324**, the system records the changes to the phase status of the algorithm to database **300**. In step **1326**, the application determines whether the new temperature setting differs from the current setting. If they are the same, the application skips applying changes to the thermostat. If they are different, then in step **1328**, the application transmits revised settings to the thermostat. In step **1330**, the application then hibernates for the specified duration until it is invoked again by beginning at step **1302** again.

1. A method for controlling a thermostat for energy savings comprising:

measuring the temperature inside a conditioned space;
 comparing said inside temperature to the desired setpoint for such conditioned space;
 evaluating the schedule for setpoint changes;
 determining whether the scheduled setpoint has been changed;
 setting the actual setpoint to the desired setpoint;
 determining the number of phases for actual setpoints;
 setting actual setpoints to increments away from the desired setpoint as additional phases, where each successive setpoint is further from said desired setpoint than the previous setpoint;
 returning to the desired setpoint after said determined number of setpoints has been reached.

2. A method as in claim 1 in which said variation of temperature setpoints is logged to a database.

3. A method as in claim 1 in which said system varies the inside temperature between three setpoints.

4. A method as in claim 1 in which said variation of temperature setpoints is initiated by a remote computer.

5. A method as in claim 1 in which said setpoints vary by one degree fahrenheit.

6. A method as in claim 1 in which said system varies the inside temperature between three or more setpoints, and each setpoint after the first setpoint is higher than said first setpoint.

7. A method as in claim 1 in which said system varies the inside temperature between three or more setpoints, and each setpoint after the first setpoint is higher than said first setpoint, and said system returns to said first setpoint after reach the last of said three or more setpoints.

8. A method as in claim 1 in which said system varies the inside temperature between three or more setpoints, and each setpoint after the first setpoint is lower than said first setpoint.

9. A method as in claim 1 in which said system varies the inside temperature between three or more setpoints, and each setpoint after the first setpoint is lower than said first setpoint, and said system returns to said first setpoint after reach the last of said three or more setpoints.

10. A method as in claim 1 in which said inside temperature returns directly to the original desired setpoint in the event a manual input to the system is detected.

11. A method as in claim 1 in which said system returns to said first target temperature in response to an override by an occupant.

12. A system for automatically varying temperature setpoints for an HVAC system comprising:

evaluating the temperature inside a conditioned environment;
 evaluating weather conditions outside the conditioned environment;
 setting a first target inside temperature for a specified time interval;
 setting at least a second target inside temperature for a specified time interval, where said second target temperature differs from said first target temperature by a specified amount;
 determining whether said variation of temperature setpoints is appropriate given said outside weather conditions; and
 cycling through said two or more target temperatures.

13. A system as in claim 12 in which said variation of temperature setpoints is logged to a database.

14. A system as in claim 12 in which said system varies the inside temperature between three setpoints.

15. A system as in claim 12 in which said variation of temperature setpoints is initiated by a remote computer.

16. A system as in claim 12 in which said setpoints vary by one degree fahrenheit.

17. A system as in claim 12 in which said system varies the inside temperature between three or more setpoints, and each setpoint after the first setpoint is higher than said first setpoint.

18. A system as in claim 12 in which said system varies the inside temperature between three or more setpoints, and each setpoint after the first setpoint is higher than said first setpoint, and said system returns to said first setpoint after reach the last of said three or more setpoints.

19. A system as in claim 12 in which said system varies the inside temperature between three or more setpoints, and each setpoint after the first setpoint is lower than said first setpoint.

20. A system as in claim 12 in which said system varies the inside temperature between three or more setpoints, and each setpoint after the first setpoint is lower than said first setpoint, and said system returns to said first setpoint after reach the last of said three or more setpoints.

21. (canceled)

22. (canceled)

23. (canceled)

* * * * *