



US 20190309794A1

(19) **United States**

(12) **Patent Application Publication**
Wolfe et al.

(10) **Pub. No.: US 2019/0309794 A1**

(43) **Pub. Date: Oct. 10, 2019**

(54) **MACHINE THRUST BEARING ASSEMBLY**

(71) Applicant: **General Electric Company**,
Schenectady, NY (US)

(72) Inventors: **Christopher Edward Wolfe**,
Niskayuna, NY (US); **Adolfo Delgado**,
College Station, TX (US); **Nathan**
Gibson, Cincinnati, OH (US); **Deepak**
Trivedi, Niskayuna, NY (US); **Bugra**
Ertas, Niskayuna, NY (US)

(21) Appl. No.: **15/944,844**

(22) Filed: **Apr. 4, 2018**

Publication Classification

(51) **Int. Cl.**
F16C 17/04 (2006.01)
F16C 33/16 (2006.01)

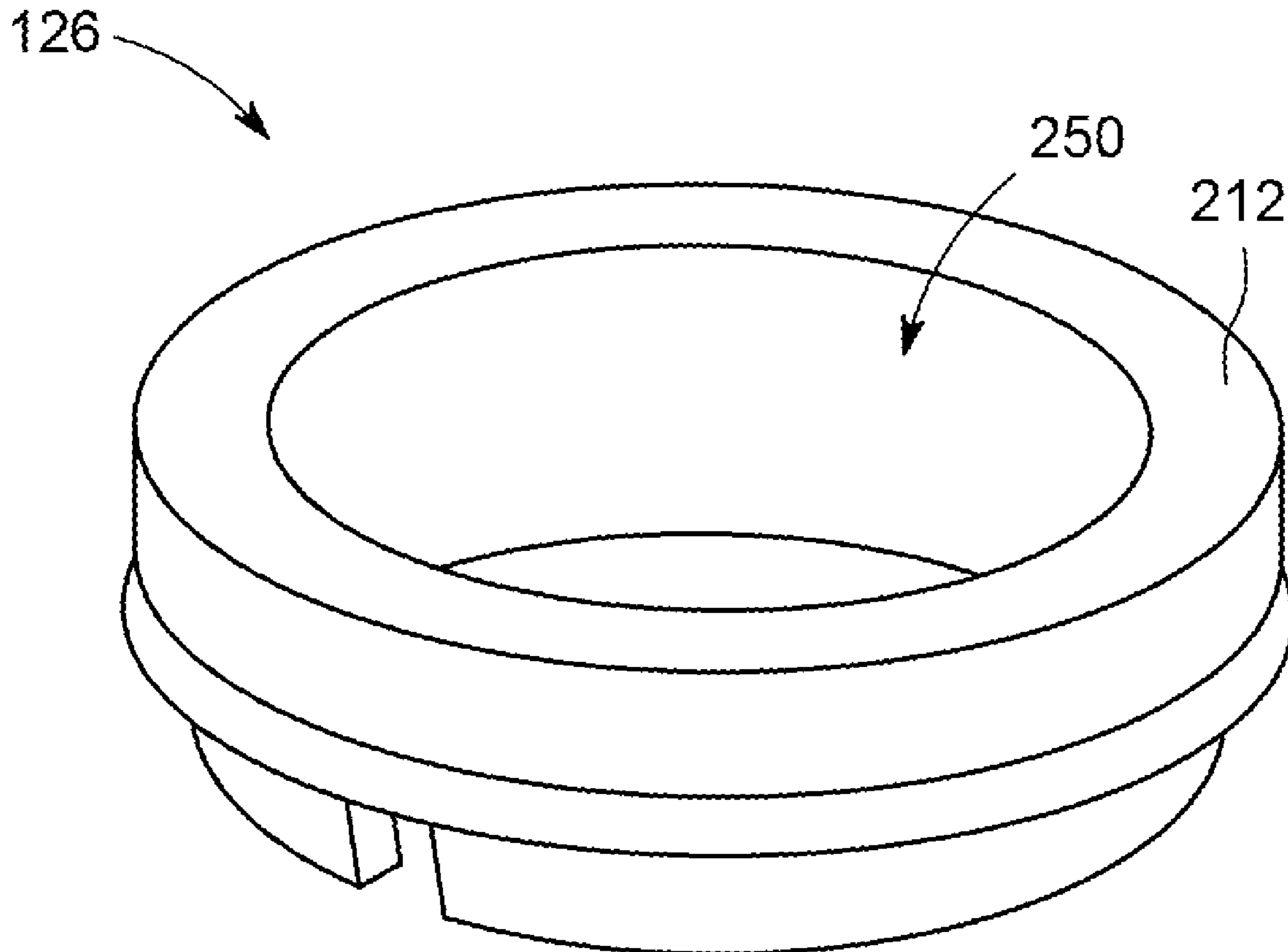
(52) **U.S. Cl.**

CPC **F16C 17/047** (2013.01); **F16C 2380/26**
(2013.01); **F16C 33/16** (2013.01)

(57)

ABSTRACT

A thrust bearing assembly for a machine includes a stator housing, a fluid film thrust bearing, and a ring bearing. The stator housing surrounds at least a segment of a rotor shaft and one or more runners on the rotor shaft that include a first runner surface and a second runner surface facing in opposite axial directions along the rotor shaft. The fluid film thrust bearing is axially held between a first stator surface of the stator housing and the first runner surface. The fluid film thrust bearing is configured to generate a fluid cushion that blocks the first runner surface from engaging the fluid film thrust bearing. The ring bearing is axially held between a second stator surface of the stator housing and the second runner surface. The ring bearing has an annular contact surface that engages the second runner surface to axially support the rotor shaft.



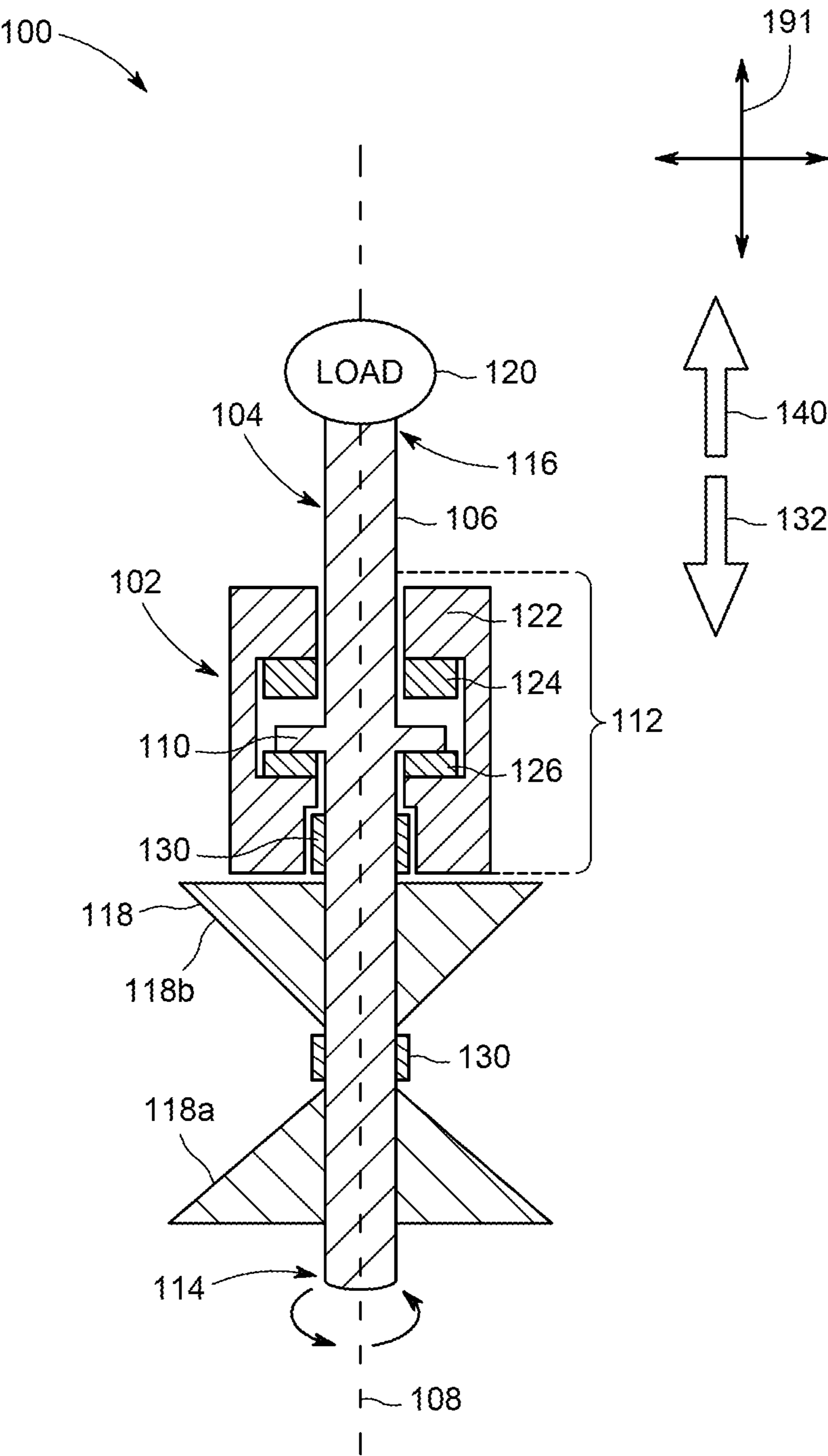


FIG. 1

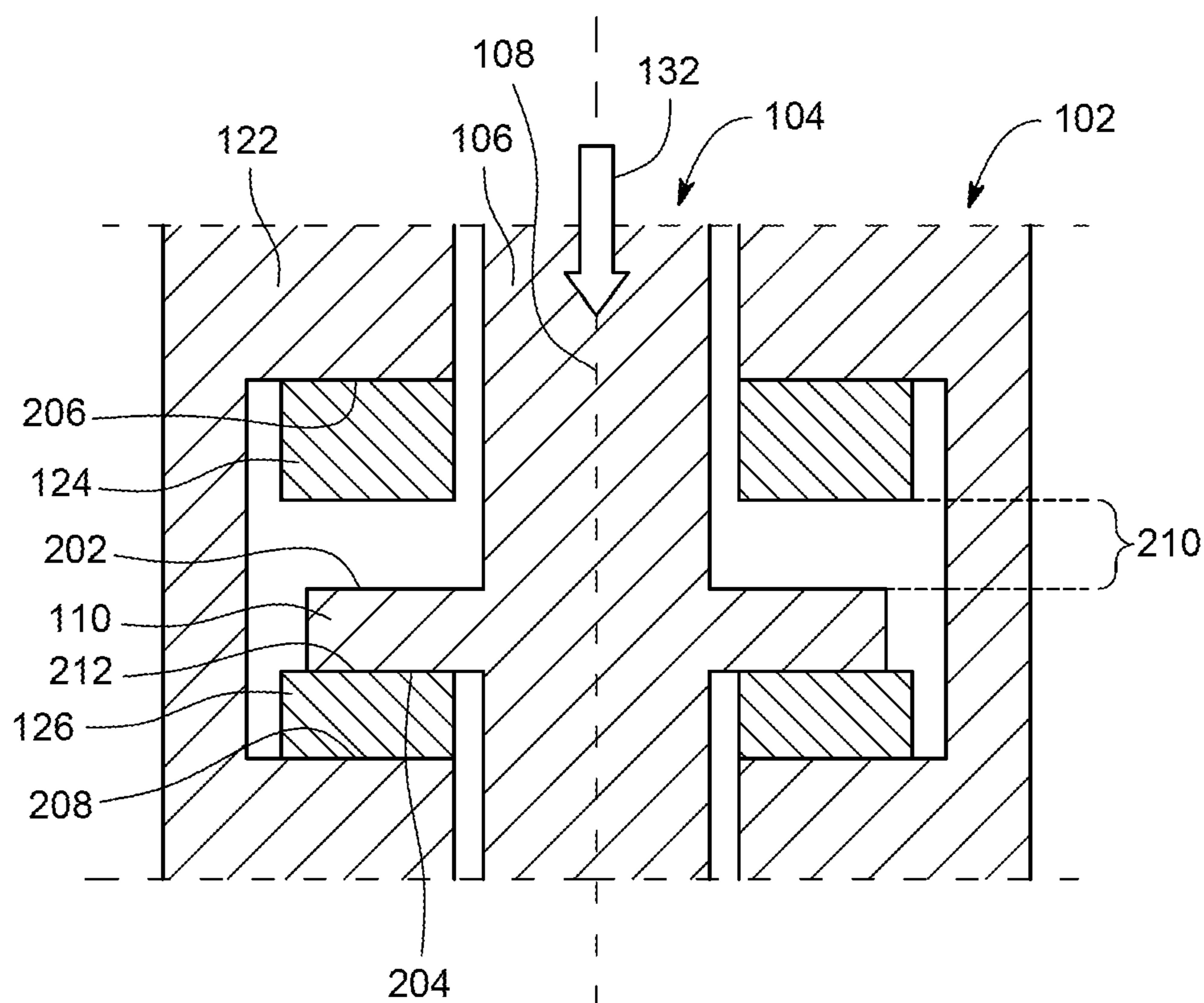


FIG. 2

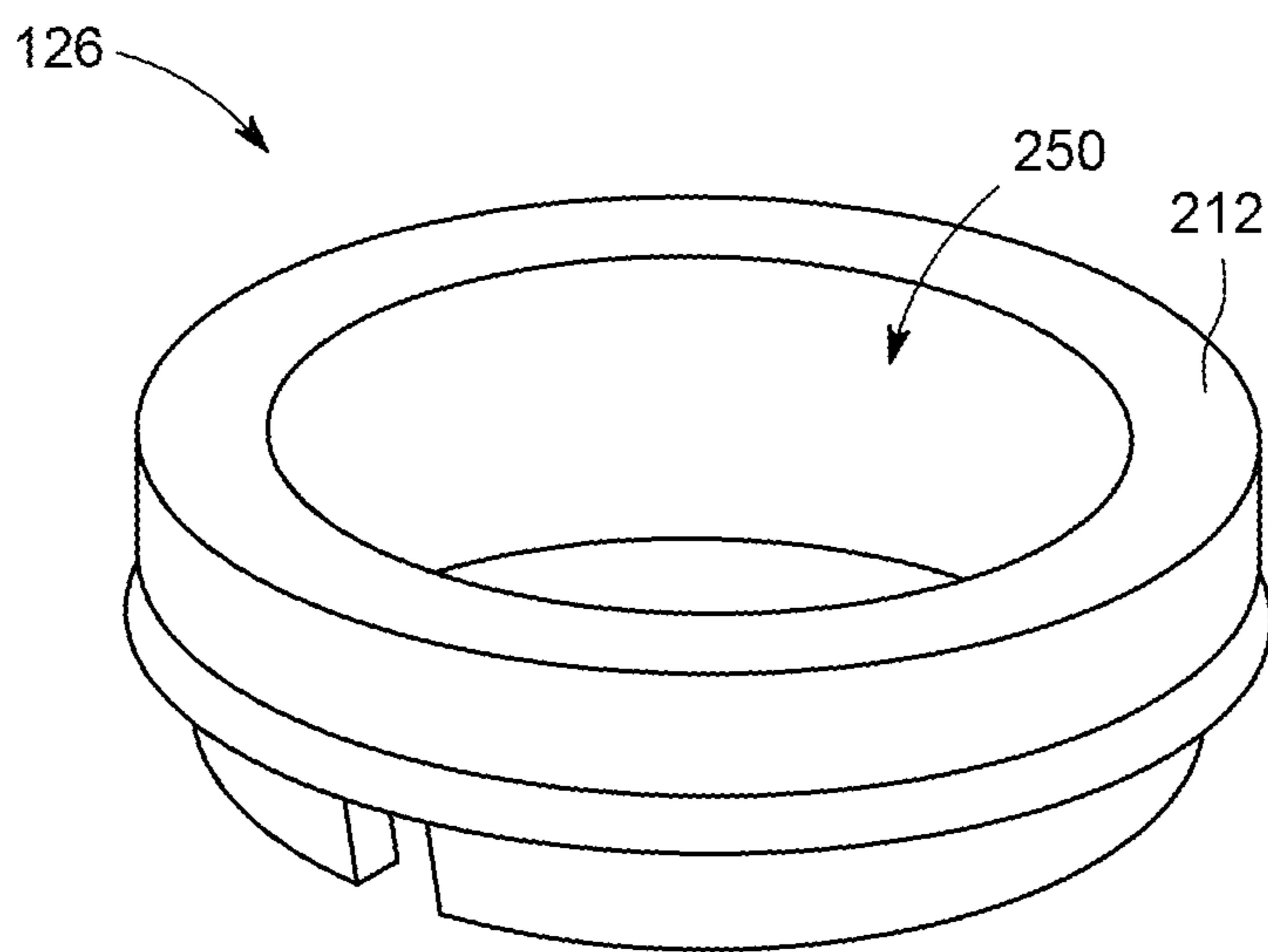


FIG. 3

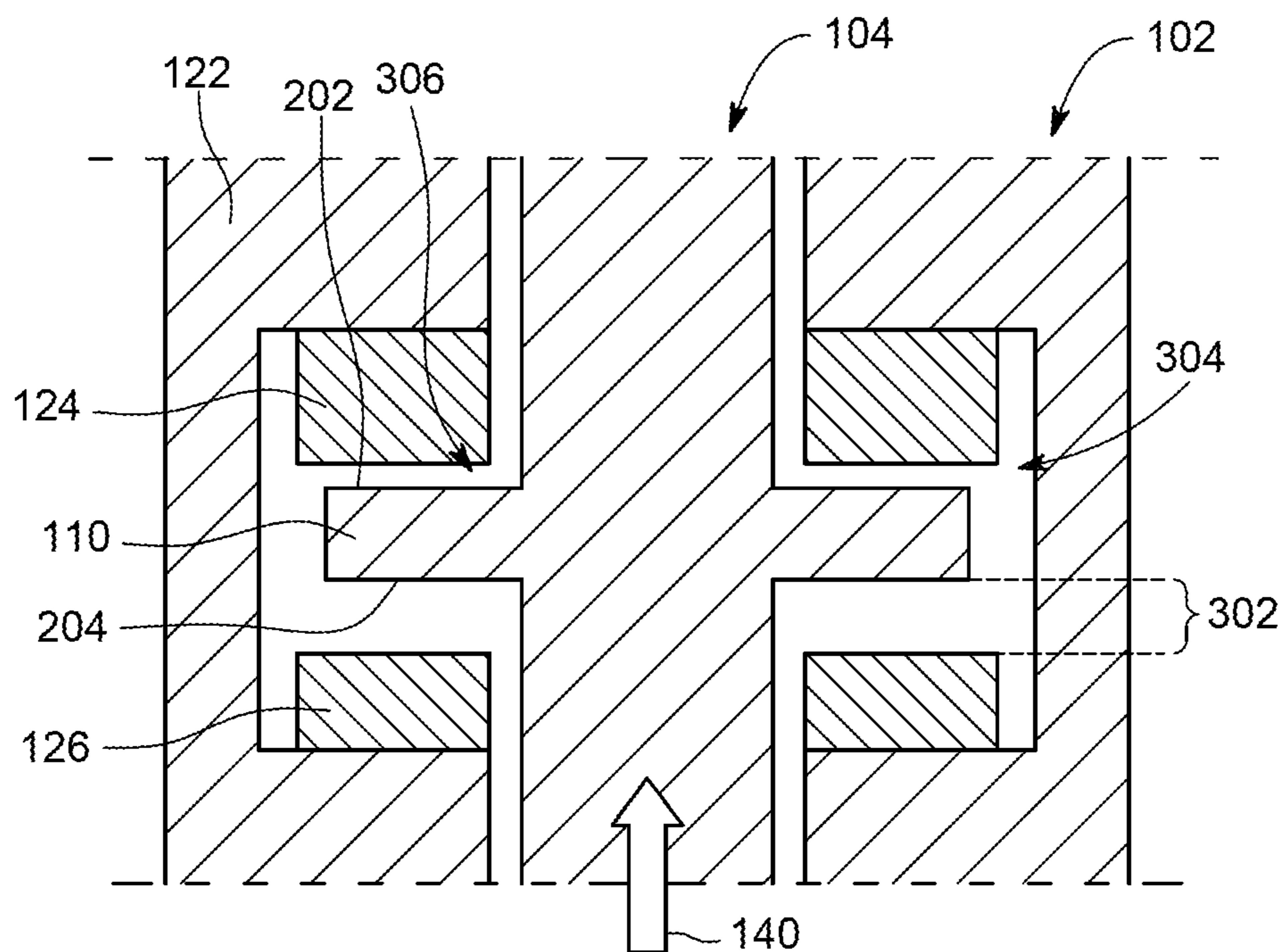


FIG. 4

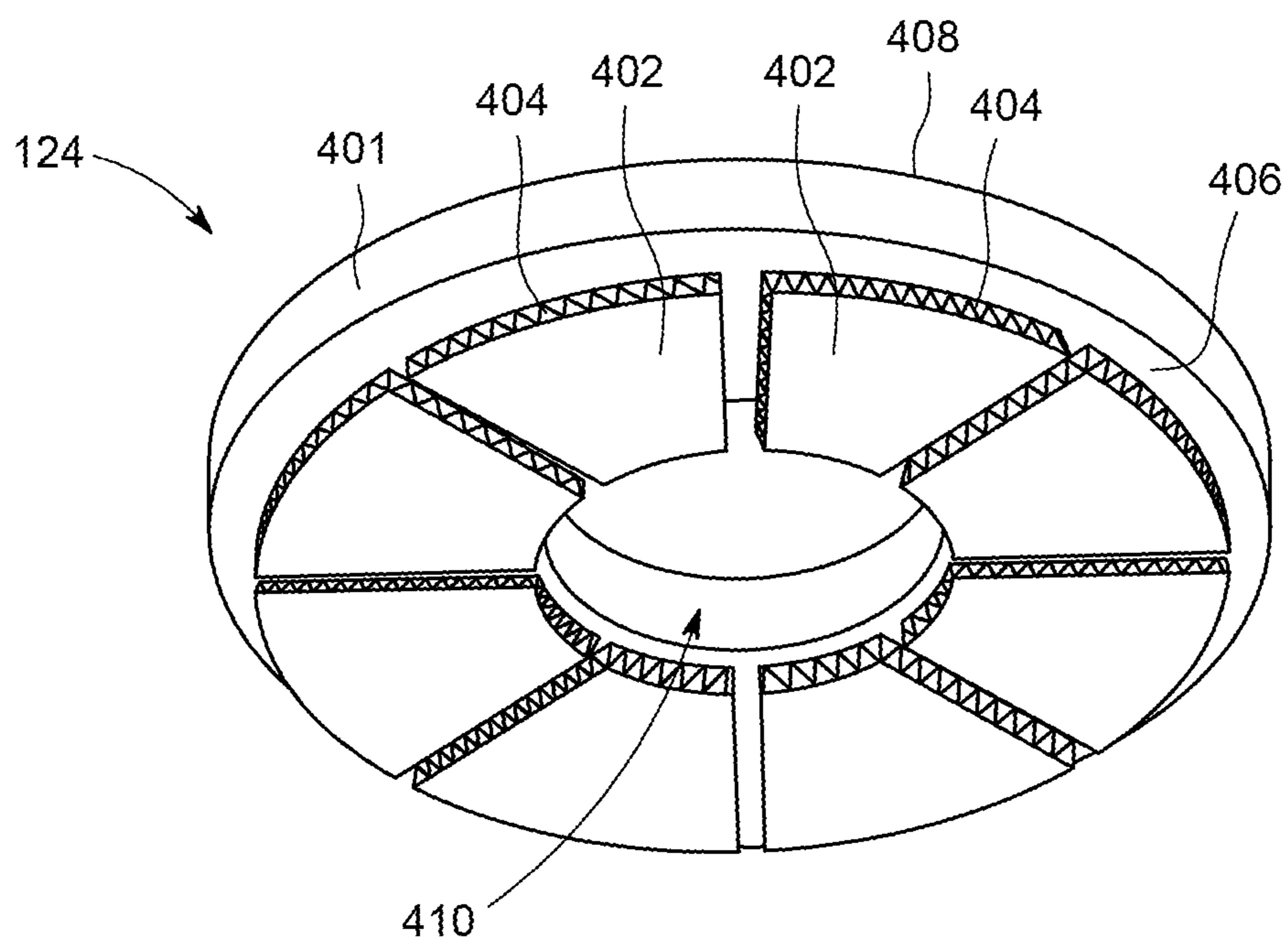


FIG. 5

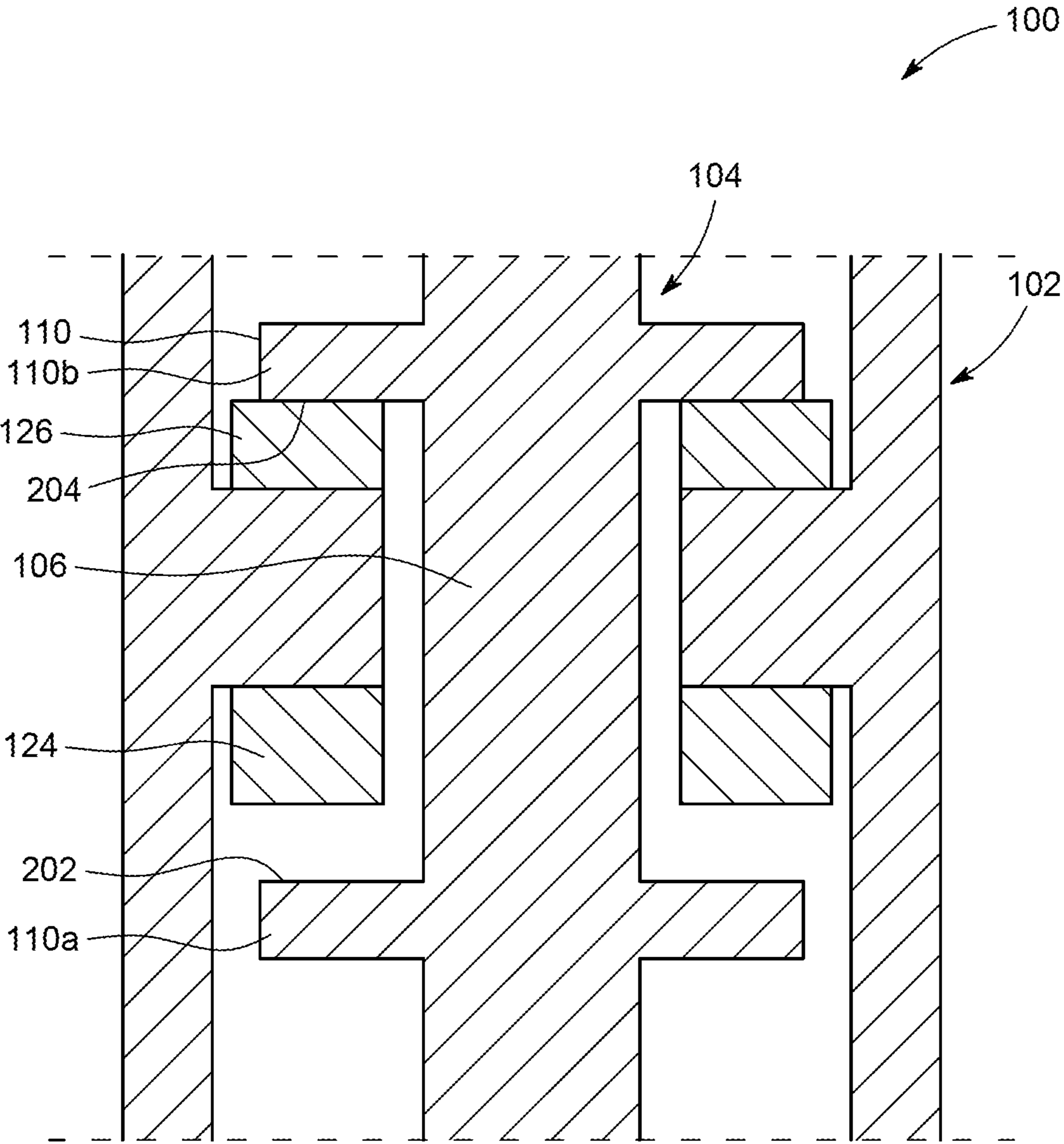


FIG. 6

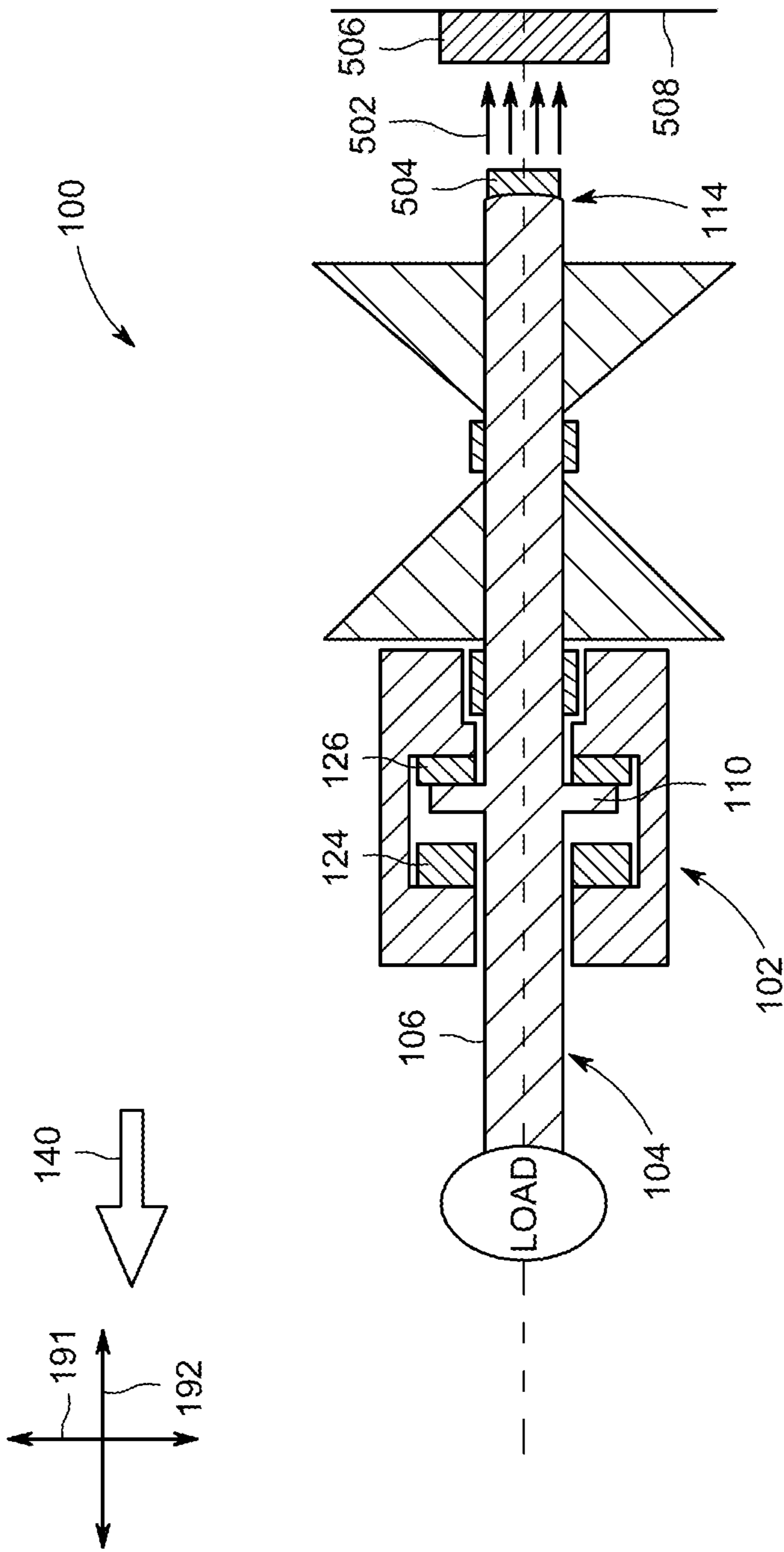


FIG. 7

MACHINE THRUST BEARING ASSEMBLY

FIELD

[0001] The subject matter described herein relates to machinery including rotating shafts, and more particularly, to thrust bearing assemblies that axially support the rotating shafts within the machinery.

BACKGROUND

[0002] Some machines include rotating shafts that are supported by bearing assemblies. For example, turbo machines such as gas turbine engines can operate by axial flow of a working fluid along a rotating shaft. The rotating shafts may be subjected to axial thrust forces exerted by the working fluid in opposite directions. The rotating shaft typically includes one or more runners or thrust plates extending therefrom that exert axial force against a thrust bearing assembly to maintain the axial position of the rotating shaft when exposed to the bi-directional thrust forces. Typical thrust bearing assemblies include two identical or at least similar types of thrust bearings that bear against opposite faces of the one or more runners. The thrust bearings are configured to absorb the full thrust forces in both directions to maintain the axial position of the rotating shaft.

[0003] The thrust bearings in typical thrust bearing assemblies can be relatively complex, including specially manufactured and assembled structures. Some thrust bearing assemblies utilize oil for lubrication between the thrust bearings and the runners. The oil may be relatively messy and may risk leakage from the thrust bearing assembly. Other thrust bearing assemblies are configured to utilize gas for lubrication by pumping a gas such as air through the thrust bearings and/or by specially-forming the thrust bearings to control gas flow. Additionally, the thrust bearing assemblies may be configured such that the runners mechanically engage the thrust bearings under certain conditions, such as during start-up and shut-down of the machine while the shaft rotates at speeds less than a designated operating speed. Some known thrust bearings and/or runners of the shafts are treated to include low friction coatings to reduce the frictional effects on the contacting surfaces and extend the lifetime of the thrust bearings. Due to the designs and features described above, typical thrust bearing assemblies may be relatively costly to produce and maintain.

SUMMARY

[0004] In an embodiment, a thrust bearing assembly for a machine is provided. The thrust bearing assembly includes a stator housing, a fluid film thrust bearing, and a ring bearing. The stator housing is configured to surround at least a segment of a rotor shaft and one or more runners on the rotor shaft. The one or more runners include a first runner surface and a second runner surface that face in opposite axial directions along the rotor shaft. The fluid film thrust bearing is axially held between a first stator surface of the stator housing and the first runner surface. The fluid film thrust bearing is configured to generate a fluid cushion that blocks the first runner surface from engaging the fluid film thrust bearing. The ring bearing is axially held between a second stator surface of the stator housing and the second

runner surface. The ring bearing has an annular contact surface that engages the second runner surface to axially support the rotor shaft.

[0005] In an embodiment, a machine is provided that includes a rotor, a stator housing, and a fluid film thrust bearing. The rotor includes a shaft and one or more runners on the shaft. The shaft is elongated along a shaft axis oriented parallel to gravity between a top end and a bottom end of the shaft. The stator housing surrounds at least a segment of the shaft including the one or more runners. The fluid film thrust bearing is axially held between an upper surface of the one or more runners and the stator housing. The upper surface faces towards the top end of the shaft. The rotor is configured to axially move relative to the stator housing towards the fluid film thrust bearing from a rest position to a lifted position responsive to a rotational speed of the rotor exceeding a threshold speed. The fluid film thrust bearing is configured to generate a fluid cushion that blocks axial movement of the rotor beyond the lifted position.

[0006] In an embodiment, a machine is provided that includes a rotor and a thrust bearing assembly. The rotor includes a shaft and one or more runners on the shaft. The shaft is elongated along a shaft axis. The one or more runners include a first runner surface and a second runner surface that face in opposite directions along the shaft axis. The thrust bearing assembly includes a fluid film thrust bearing and a ring bearing. The fluid film thrust bearing is axially located between the first runner surface and a first stator surface of a stator housing. The ring bearing is axially located between the second runner surface and a second stator surface of the stator housing. The rotor is configured to axially move relative to the thrust bearing assembly from a rest position to a lifted position responsive to a rotational speed of the rotor exceeding a threshold speed. The rotor is biased towards the rest position by a biasing force. The ring bearing has an annular contact surface that engages the second runner surface when the rotor is in the rest position to axially support the rotor.

BRIEF DESCRIPTION OF THE DRAWINGS

[0007] The present inventive subject matter will be better understood from reading the following description of non-limiting embodiments, with reference to the attached drawings, wherein below:

[0008] FIG. 1 is a cross-sectional illustration of one embodiment of a machine;

[0009] FIG. 2 is an enlarged view of a portion of the machine shown in FIG. 1 with a resting rotor and a thrust bearing assembly;

[0010] FIG. 3 is a perspective view of one embodiment of a ring bearing of the thrust bearing assembly shown in FIG. 2;

[0011] FIG. 4 is an enlarged view of a portion of the machine shown in FIG. 1 with the rotor in a lifted position;

[0012] FIG. 5 is a perspective view of one embodiment of a fluid film thrust bearing of the thrust bearing assembly shown in FIG. 1;

[0013] FIG. 6 is an enlarged view of a portion of another embodiment of the machine shown in FIG. 1 with the rotor and the thrust bearing assembly; and

[0014] FIG. 7 is a cross-sectional illustration of another embodiment of the machine shown in FIG. 1.

DETAILED DESCRIPTION

[0015] One or more embodiments described herein provide a thrust bearing assembly and a machine having the same. The thrust bearing assembly may have a reduced complexity and/or cost relative to some known thrust bearing assemblies. The thrust bearing assembly may be asymmetric, such that one type of thrust bearing blocks axial movement of the rotating shaft in a first axial direction, and a different, second type of thrust bearing blocks axial movement of the rotating shaft in the opposite axial direction. In one or more embodiments, the second type of bearing is a ring bearing that has a continuous annular contact surface. The ring bearing may be less complex and cheaper to produce than the first thrust bearing, which may be a fluid film thrust bearing. Due to the design of the machine and the thrust bearing assembly therein, additional cost savings may be achieved by omitting low friction coatings that are typically applied on the runners of the rotor shaft and/or on the thrust bearings. One or more embodiments of the thrust bearing assembly and machine described herein may conserve monetary resources and reduce maintenance without compromising design robustness and efficiency relative to known machines with thrust bearing assemblies.

[0016] FIG. 1 is a cross-sectional illustration of one embodiment of a machine 100. The machine 100 includes a thrust bearing assembly 102 and a rotor 104. In the illustrated embodiment, the machine 100 is a turbo-machine, such as a gas turbine engine, a steam turbine engine, a turbocharger, a generator, an induction motor, or the like. It is understood, however, that the thrust bearing assembly 102 may be installed on any machine that includes a rotating shaft subject to axial forces along an axis of the rotating shaft. Thus, the machine 100 shown in FIG. 1 is a non-limiting example embodiment.

[0017] The rotor 104 of the machine 100 includes a rotor shaft 106 that is elongated along a shaft axis 108. The rotor 104 is configured to rotate about the shaft axis 108. The rotor 104 includes one or more runners 110 on the rotor shaft 106, which is also referred to herein as shaft 106. Each runner 110 extends radially from the shaft 106. The one or more runners 110 may be integral protrusions of a unitary, one-piece shaft 106, or alternatively may be discrete components coupled to the shaft 106. The rotor 104 in the illustrated embodiment includes a single runner 110, but may include multiple runners 110 that are axially spaced apart from each other in an alternative embodiment. The runner 110 is located at an intermediate segment 112 of the shaft 106 that is spaced apart from first and second ends 114, 116 of the shaft 106. The rotor 104 also includes one or more rotor wheels 118 on the shaft 106. The rotor wheels 118 are axially spaced apart from the runner 110. Each rotor wheel 118 includes a plurality of blades (not shown) that are disposed circumferentially around the shaft 106 and rotate with the shaft 106. Although not shown, the machine 100 includes a plurality of stationary vanes that extend towards the rotor 104 between adjacent rows of the blades in each rotor wheel 118. The stationary vanes cooperate with the blades to form a plurality of stages. In the illustrated embodiment, the rotor 104 includes two rotor wheels 118a, 118b. The machine 100 may be configured such that one of the rotor wheels 118a is a compressor, and the other rotor wheel 118b is a turbine, or vice-versa. For example, in an embodiment in which the machine 100 is a gas turbine engine, such as an auxiliary

power unit on an aircraft, the rotor wheel 118a may be a compressor, the rotor wheel 118b may be a turbine, and the machine 100 may include a combustion chamber (not shown) axially between the compressor 118a and the turbine 118b. The rotor 104 may include more or less than two rotor wheels 118 in an alternative embodiment.

[0018] In the illustrated embodiment, the second end 116 of the shaft 106 is operatively coupled to a load 120. The rotation of the shaft 106 may be used to power the load 120. The load 120 according to some non-limiting examples may include or represent a generator, an alternator, another turbine or fan, or another machine.

[0019] In operation of the machine 100, a working fluid such as air, steam, or another gas may be channeled through an inlet conduit and directed axially through the rotor wheels 118. For example, in a turbine (e.g., the wheel 118b), the working fluid passes through the stages of the blades and vanes, imparting a rotational force on the blades causing the shaft 106 to rotate. The shaft 106 also receives thrust forces in the first axial direction and/or the second axial direction due to the axial flow of the working fluid and various pressure drops across the stages. The thrust bearing assembly 102 can withstand the thrust forces imparted on the shaft 106 to maintain the axial position of the rotor 104 relative to the thrust bearing assembly 102 and other components of the machine 100.

[0020] The thrust bearing assembly 102 includes a stator housing 122, a fluid film thrust bearing 124, and a ring bearing 126. The stator housing 122 circumferentially surrounds the intermediate segment 112 of the shaft 106, and optionally may surround additional segments of the shaft 106. As such, the stator housing 122 circumferentially surrounds the runner 110. The rotor 104 is configured to rotate relative to the stator housing 122, which may remain static as the rotor 104 rotates.

[0021] Although shown in cross-section, the fluid film thrust bearing 124 and the ring bearing 126 may have annular shapes that circumferentially surround the shaft 106. Optionally, the stator housing 122 circumferentially surrounds the fluid film thrust bearing 124 and the ring bearing 126, such that the bearings 124, 126 are radially disposed between the shaft 106 and at least a portion of the stator housing 122. The fluid film thrust bearing 124 is a different type of bearing than the ring bearing 126. Both the fluid film thrust bearing 124 and the ring bearing 126 are held between the stator housing 122 and the runner 110. The fluid film thrust bearing 124 and the ring bearing 126 are configured to block or restrict axial movement of the rotor 104 relative to the stator housing 122. For example, the fluid film thrust bearing 124 blocks movement of the rotor 104 in a first axial direction, and the ring bearing 126 blocks movement of the rotor 104 in a second axial direction that is opposite the first axial direction.

[0022] As described in more detail herein, the fluid film thrust bearing 124 blocks the movement of the rotor 104 in the first axial direction by generating a fluid cushion between the fluid film thrust bearing 124 and the runner 110. The fluid cushion may be an air cushion or an oil film. For example, the fluid cushion may prevent the runner 110 from engaging the fluid film thrust bearing 124. As used herein, the term “engage” refers to direct mechanical contact. In one or more embodiments, the ring bearing 126 blocks the movement of the rotor 104 in the second axial direction by engaging the runner 110. For example, the runner 110 may

rotate relative to the thrust bearing assembly **102** while in engagement with the ring bearing **126** during at least some rotational speeds of the rotor **104**. In at least one embodiment, the rotor **104** is configured to move axially (e.g., parallel to the shaft axis **108**) relative to the thrust bearing assembly **102** based on the rotational speed of the rotor **104**.

[0023] The machine **100** may include one or more journal bearings **130** or other types of radial bearings that are configured to support and maintain the radial position of the shaft **106**, such as by preventing the shaft **106** from tilting and/or translating radially. Two journal bearings **130** are shown in the illustrated embodiment, but the machine **100** may have any number of journal bearings **130**. The journal bearings **130** may be held by the stator housing **122** and/or by another base structure.

[0024] In the illustrated embodiment, the shaft **106** is oriented along a vertical axis **191**, such that the shaft axis **108** is approximately parallel (e.g., within 2 degrees, within 5 degrees, within 10 degrees, or the like) to the vertical axis **191**. The vertical axis **191** is parallel to the direction of gravitational force **132** exerted on the machine **100**. The first end **114** of the shaft **106** is a bottom end, and the second end **116** of the shaft **106** is a top end (relative to gravity). The fluid film thrust bearing **124** is configured to block movement of the rotor **104** in the upward direction, which represents the first axial direction. The ring bearing **126** is configured to block movement of the rotor **104** in the downward direction, which represents the second axial direction.

[0025] The rotor **104** is configured to move vertically relative to the thrust bearing assembly **102** based on the rotational speed of the rotor **104**. For example, FIG. 1 shows the rotor **104** in a rest or lowered position, which is achieved when the rotor **104** is static and when the rotor **104** is rotating at speeds lower than a threshold rotational speed. The rotor **104** may be static while the machine **100** is off. The rotor **104** may rotate at speeds below the threshold speed during start-up and shut-down periods of the machine **100**. In response to the rotational speed of the rotor **104** exceeding the threshold speed, the rotor **104** moves vertically upward from the rest position to a lifted or raised position. In the lifted position, a gap between the runner **110** and the fluid film thrust bearing **124** is reduced relative to the height of the gap in the rest position. The rotor **104** may rise vertically upward in response to a magnitude of a thrust force **140** in the upward direction that is exerted by the working fluid on the rotor **104** exceeding downward forces. For example, the upward thrust force **140** may exceed the sum of the downward gravitational force **132**, and any other biasing forces acting on the rotor **104** towards the rest position (e.g., downward thrust forces, spring forces, magnetic forces, or the like). The machine **100** may be intentionally tuned to achieve a net upward force on the rotor **104** when the rotor **104** rotates at speeds at or exceeding the threshold speed. The threshold speed may be lower than an operating speed of the rotor **104**, such that the rotor **104** is in the lifted position during general operation of the machine **100**.

[0026] Although the rotor **104** is oriented vertically in the illustrated embodiment, the rotor **104** may be oriented horizontally with respect to gravity or at other angular orientations in one or more other embodiments. In cases where the rotor is not oriented vertically, the biasing force of gravity may be replaced by a magnetic force or a spring

force that biases the rotor **104** in one direction (e.g., towards the ring bearing **126** in the rest position), as described herein with reference to FIG. 6. Furthermore, the illustrated arrangement of the components of the machine **100** in FIG. 1 represents a non-limiting example arrangement, and other arrangements are possible in other embodiments. For example, the rotor wheels **118** may be disposed axially between the load **120** and the thrust bearing assembly **102** in an alternative embodiment (instead of the thrust bearing assembly **102** between the load **120** and the rotor wheels **118**).

[0027] FIG. 2 is an enlarged view of a portion of the machine **100** shown in FIG. 1 with the rotor **104** and the thrust bearing assembly **102**. The rotor **104** is in the rest position relative to the thrust bearing assembly **102** in FIG. 2. The runner **110** includes a first runner surface **202** and a second runner surface **204** that face in opposite axial directions along the shaft **106**. In the illustrated embodiment, the runner **110** defines both the first and second runner surfaces **202**, **204**, but in an alternative embodiment one runner **110** defines the first runner surface **202** and another runner **110** defines the second runner surface **204**, as shown and described with reference to FIG. 6. The fluid film thrust bearing **124** is held axially (e.g., along the shaft axis **108**) between the first runner surface **202** and a first stator surface **206** of the stator housing **122** that faces the first runner surface **202**. In the illustrated embodiment, the fluid film thrust bearing **124** is mounted to the stator housing **122** on the first stator surface **206**. For example, the fluid film thrust bearing **124** may be affixed to the first stator surface **206** via an adhesive, a fastener, an interference or friction fit, or the like.

[0028] The ring bearing **126** is located axially between the second runner surface **204** and a second stator surface **208** of the stator housing **122** that faces the second runner surface **204**. The ring bearing **126** may be mounted to the stator housing **122** on the second stator surface **208**. The ring bearing **126** may be affixed to the second stator surface **208** via an adhesive, a fastener, an interference or friction fit, or the like. For example, the ring bearing **126** may be at least partially embedded in the second stator surface **208** within a slot or groove (not shown) of the stator housing **122**, and held in the slot via an interference fit. The runner **110** is axially located between the fluid film thrust bearing **124** and the ring bearing **126**.

[0029] In the illustrated embodiment in which the shaft **106** of the rotor **104** is oriented vertically, the first runner surface **202** of the runner **110** faces vertically upward and is referred to herein as an upper surface **202**. The second runner surface **204** of the runner **110** faces vertically downward and is referred to herein as a lower surface **204**. The fluid film thrust bearing **124** is located above the runner **110** (and the upper surface **202** thereof). The ring bearing **126** is located below the runner **110** (and the lower surface **204** thereof). The fluid film thrust bearing **124** is configured to block upward movement of the rotor **104** beyond the designated lifted position of the rotor **104**, and the ring bearing **126** blocks downward movement of the rotor **104** beyond the rest position.

[0030] The rotor **104** is in the rest position in FIG. 2. In the rest position, the ring bearing **126** engages the lower surface **204** of the runner **110**. The fluid film thrust bearing **124** is vertically spaced apart from the upper surface **202** of the runner **110** by a gap **210**. The rotor **104** may be rotationally

static or rotating at a speed below the threshold speed. In either condition, the downward gravitational force **132** on the rotor **104** (e.g., the weight of the rotor **104**) exceeds any upward thrust force exerted by a working fluid on the rotor **104**, such that the runner **110** rests on the ring bearing **126**. The ring bearing **126** vertically supports the rotor **104**. The ring bearing **126** may have a continuous annular contact surface **212** that is configured to engage the lower surface **204** of the runner **110**. The ring bearing **126** may have a composition that allows sliding contact with the runner **110** with limited friction and limited deterioration of the contact surface **212**. For example, the ring bearing **126** may be a carbon ring that is at least partially composed of carbon.

[0031] FIG. 3 is a perspective view of one embodiment of the ring bearing **126** of the thrust bearing assembly **102** shown in FIG. 2. The ring bearing **126** includes the annular contact surface **212** that extends continuously and uniformly along an entire circumference of the ring bearing **126**. The annular contact surface **212** may be flat or planar. The ring bearing **126** defines a central cavity **250** that receives the shaft **106** (shown in FIG. 1) therethrough. The diameter of the central cavity **250** is less than an outer diameter of the runner **110** (FIG. 2), such that the runner **110** cannot pass through the central cavity **250** due to engagement with the annular contact surface **212**. The ring bearing **126** in the illustrated embodiment is a carbon ring that is at least partially composed of carbon. For example, the annular contact surface **212** may be at least partially composed of carbon, which may enable the annular contact surface **212** to have a relatively low coefficient of friction.

[0032] FIG. 4 is an enlarged view of a portion of the machine **100** shown in FIG. 1 with the rotor **104** in the lifted position relative to the thrust bearing assembly **102**. The rotor **104** is configured to move vertically upward relative to the stator housing **122** from the rest position to the lifted position responsive to the rotational speed of the rotor **104** exceeding the threshold speed. Upon the rotational speed reaching the threshold speed, the upward thrust force **140** exerted on the rotor **104** by the working fluid, as described with reference to FIG. 1, exceeds the downward gravitational force (e.g., the weight of the rotor **104**) and any downward thrust forces, resulting in a net upward force. The net upward force causes the rotor **104** to rise, which lifts the runner **110** off of the ring bearing **126**. Thus, at speeds at or above the threshold speed, the ring bearing **126** is mechanically separate from the rotor **104**. For example, the lower surface **204** of the runner **110** is vertically spaced apart from the ring bearing **126** by a gap **302**.

[0033] As described above, the machine **100** (shown in FIG. 1) may be tuned such that the threshold speed is below the operating speed or range of speeds of the rotor **104**. The operating speed or range represents the speed(s) achieved while the machine **100** is actively functioning, such as to power the load **120** (FIG. 1). For example, the operating speeds of the rotor **104** may be 50,000 RPMs, and the machine **100** may be tuned such that the rotor **104** rises from the rest position to the lifted position at 10,000 RPMs. Since the rotor **104** is in the lifted position at the operating speed, the rotor **104** does not engage the ring bearing **126** while rotating at the operating speeds. In at least one embodiment, the rotor **104** may only rotate in physical contact with the ring bearing **126** during start-up and shut-down while the rotor **104** spins at relatively low speeds. Avoiding mechanical contact between the rotor **104** and the ring bearing **126**

at the operating speeds and allowing mechanical contact only at slower rotating speeds for limited durations may beneficially reduce frictional energy loss and may extend the life of the components (relative to the rotor **104** engaging the ring bearing **126** at the higher speeds and/or for longer durations).

[0034] The stator housing **122** is sized and shaped to allow the rotor **104** to float axially (e.g., vertically) relative to the stator housing **122** a given distance to allow the rotor **104** to translate between the rest and lifted positions. For example, the stator housing **122** defines a recess **304** that provides clearance to allow the runner **110** to float vertically between the fluid film thrust bearing **124** above and the ring bearing **126** below responsive to forces (e.g., gravitational, thrust, and the like) exerted on the rotor **104**.

[0035] The fluid film thrust bearing **124** is configured to generate a fluid cushion that blocks upward movement of the rotor beyond the lifted position. Due to the fluid cushion, the fluid film thrust bearing **124** is mechanically separate and vertically spaced apart from the upper surface **202** of the runner **110**. For example, the fluid cushion causes a narrow gap **306** between the fluid film thrust bearing **124** and the upper surface **202**. The narrow gap **306** has a smaller height than the gap **210** that is present when the rotor **104** is in the rest position, as shown in FIG. 2, due to the runner **110** moving towards the fluid film thrust bearing **124** during the transition from the rest position to the lifted position. In an embodiment, the fluid film thrust bearing **124** does not engage the upper surface **202** of the runner **110** in either the rest position or the lifted position.

[0036] Since the fluid film thrust bearing **124** does not engage the runner **110**, there may be very limited frictional energy loss as the runner **110** rotates along the fluid cushion. Furthermore, the lack of mechanical engagement between the fluid film thrust bearing **124** and the upper surface **202** of the runner **110** may extend the life of the components by reducing deterioration and damage (relative to allowing engagement between the runner **110** and the fluid film thrust bearing **124** or another type of thrust bearing). In one or more embodiments, both the upper surface **202** of the runner **110** and the fluid film thrust bearing **124** are void of (e.g., lack) low friction coatings since there is no physical contact. The omission of the low friction coating may reduce manufacturing costs and increase production efficiency of the thrust bearing assembly **102**.

[0037] The fluid cushion generated by the fluid film thrust bearing **124** may be composed of oil, gas (e.g., air), or another fluid. In at least one embodiment, the fluid film thrust bearing **124** is an air bearing such that the fluid cushion is an air cushion. The fluid film thrust bearing **124** may be hydrostatic or hydrodynamic. For example, in an embodiment in which the fluid film thrust bearing **124** is hydrostatic, the fluid film thrust bearing **124** may generate the fluid cushion by directing or channeling fluid provided by an external fluid source into the narrow gap **306**. The external fluid source may be an air or oil pump or the like that pressurizes the fluid, or a portion of the machine's working fluid. In the case of the fluid source being external, the formation of the fluid cushion may not be tied to the shaft's rotation but rather by the operation of the fluid source itself. The fluid film thrust bearing **124** may define small apertures that direction the fluid through the thrust bearing **124** to the narrow gap **306**. In a different embodiment in which the fluid film thrust bearing **124** is hydrodynamic, the

fluid film thrust bearing **124** may generate the fluid cushion based on the relative rotation between the runner **110** and the thrust bearing **124**. For example, the hydrodynamic fluid film thrust bearing **124** may be sized and shaped such that the relative rotation pulls the fluid into the narrow gap **306** via viscosity effects.

[0038] FIG. 5 is a perspective view of one embodiment of the fluid film thrust bearing **124** of the thrust bearing assembly **102** shown in FIG. 1. In the illustrated embodiment, the fluid film thrust bearing **124** is a hydrodynamic air thrust bearing that is configured to generate the air cushion based on the rotational movement of the rotor **104** (FIG. 1). More specifically, the fluid film thrust bearing **124** in the illustrated embodiment is a foil thrust bearing. The foil thrust bearing **124** includes a main body **401** and multiple pads **402** that are disposed on and supported by the main body **401**. The multiple pads **402** are annularly arranged side by side along a working side **406** of the main body **401**. The working side **406** is opposite a mounting side **408** of the main body **401**, which is configured to be mounted to the stator housing **122**. The pads **402** may be angled or tilted relative to the working side **406** of the main body **401**. The tilt of the pads **402** in combination with the rotation of the rotor **104** may provide the viscosity effects that generate the air cushion. The pads **402** may be supported on a spring base **404**, which may be a bump foil spring. The bump foil spring is optionally corrugated. The foil thrust bearing **124** defines a central cavity **410** that receives the shaft **106** (FIG. 1) of the rotor **104** therethrough.

[0039] In other embodiments, the fluid film thrust bearing **124** may be other types of thrust bearings other than a hydrodynamic foil thrust bearing. For example, the fluid film thrust bearing **124** may be a tilting pad thrust bearing, a tapered land thrust bearing, a flat land thrust bearing, or the like. The fluid cushion may be provided by oil or another fluid that is injected into the narrow gap **306** (shown in FIG. 4) or that coats and/or floods the thrust bearing.

[0040] FIG. 6 is an enlarged view of a portion of another embodiment of the machine **100** shown in FIG. 1 with the rotor **104** and the thrust bearing assembly **102**. Unlike the embodiment of the rotor **104** shown in FIGS. 1, 2, and 4, the rotor **104** in the illustrated embodiment includes multiple runners **110** that are axially spaced apart along the shaft **106**. A first runner **110a** of the runners **110** defines the upper surface **202**. The fluid film thrust bearing **124** is disposed above the first runner **110a**. A second runner **110b** of the runners **110** defines the lower surface **204**. The ring bearing **126** is disposed below the second runner **110b**. In the illustrated embodiment the second runner **110b** is located above the first runner **110a**, but in an alternative embodiment the second runner **110b** may be below the first runner **110a**.

[0041] In the illustrated embodiment, the machine **100** functions in the same way as the embodiment shown in FIGS. 1, 2, and 4. For example, while the rotor **104** is static or rotating less than the threshold speed, gravity (e.g., weight) forces the rotor **104** into the rest position, which is shown in FIG. 6. In the rest position, the lower surface **204** of the runner **110b** engages the ring bearing **126** to vertically support the rotor **104**. Upon the rotational speed of the rotor **104** exceeding the threshold speed, the tuned upward thrust force exerted by the working fluid on the rotor **104** overcomes the downward gravitational and thrust forces, causing the rotor **104** to rise vertically to the lifted position. As the rotor **104** rises, the runner **110a** moves toward the fluid film

thrust bearing **124**, but the fluid cushion prevents the upper surface **202** from engaging the fluid film thrust bearing **124**.

[0042] FIG. 7 is a cross-sectional illustration of another embodiment of the machine **100** shown in FIG. 1. Unlike in FIG. 1, the shaft **106** of the rotor **104** in the illustrated embodiment is not oriented parallel to the vertical axis **191** and is not parallel to gravity. The shaft **106** of the rotor **104** in FIG. 7 is oriented parallel to a lateral axis **192** that is perpendicular to the vertical axis **191** and to gravity. The machine **100** in FIG. 7 functions similarly to the machine **100** in FIG. 1 because the rotor **104** in FIG. 7 is still biased towards the rest position. In the illustrated embodiment, the biasing force is not gravitational force, but rather is a magnetic force **502** exerted on the rotor **104**. The magnetic force **502** pushes and/or pulls the rotor **104** towards the rest position, such that the runner **110** is biased towards the ring bearing **126** of the thrust bearing assembly **102**. In the illustrated embodiment, the magnetic force **502** is provided by the attraction between a first magnet unit **504** (e.g., including one or more magnets) mounted to the first end **114** of the shaft **106** and a second magnet unit **506** mounted to an external structure **508**. The machine **100** and the magnets **504**, **506** may be tuned and designed such that, upon the rotational speed of the rotor **104** exceeding the designated threshold speed, the thrust force **140** exerted on the rotor **104** along the lateral axis **192** towards the fluid film thrust bearing **124** exceeds the magnetic force **502** in the opposite direction, causing the rotor **104** to axially move towards the lifted position.

[0043] Although the shaft **106** is oriented perpendicularly to the vertical axis **191** (and to gravity) in the illustrated embodiment, it is recognized that the shaft **106** may have other orientations relative to the axes **191**, **192** in other embodiments. Furthermore, other biasing mechanisms may be used to exert a biasing force on the rotor **104** towards the rest position in other embodiments, such as springs.

[0044] Certain embodiments of the present disclosure provide a machine and a thrust bearing assembly thereof that includes a vertical rotor shaft orientation, a designed thrust load in the upward axial direction, a fluid film thrust bearing mating with an upper runner surface, and a carbon ring mating with a lower runner surface. The machine is designed such that the lower runner surface rubs against the carbon ring at relatively low speeds (compared to the operating speeds) during start-up and shut-down due to gravity. The carbon ring bearing may provide a good wear couple that is inexpensive (e.g., relative to the fluid film thrust bearing and conventional thrust bearings). The machine is further designed such that the upper runner surface does not engage the fluid film thrust bearing at any time, including during start-up, full operation, shut-down, idling, and static (e.g., off). Due to the lack of contact, the machine may omit low friction wear coatings on the upper runner surface and the fluid film thrust bearing, further reducing cost.

[0045] The machine according to the described herein may be a relatively small turbo-machine. For example, the machine may be a small gas turbine engine, such as an auxiliary power unit (APU) of an aircraft or ground-based unit. The machine may be operated in predictable, set orientations. For example, in an embodiment in which the machine is an APU of an aircraft, the APU may be operated only, or primarily, when the aircraft is on the ground.

[0046] Certain embodiments of the present disclosure provide a thrust bearing assembly for a machine. The thrust

bearing assembly includes a stator housing, a fluid film thrust bearing, and a ring bearing. In at least one embodiment, neither the fluid film thrust bearing nor the ring bearing is a rolling element bearing. The stator housing is configured to surround at least a segment of a rotor shaft and one or more runners on the rotor shaft. The one or more runners include a first runner surface and a second runner surface that face in opposite axial directions along the shaft. The fluid film thrust bearing is axially held between a first stator surface of the stator housing and the first runner surface. The fluid film thrust bearing is configured to generate a fluid cushion that blocks the first runner surface from engaging the fluid film thrust bearing. The ring bearing is axially held between a second stator surface of the stator housing and the second runner surface. The ring bearing has an annular contact surface that engages the second runner surface to axially support the rotor shaft.

[0047] Optionally, the stator housing is sized and shaped to allow the rotor shaft and the one or more runners to float axially relative to the fluid film thrust bearing and the ring bearing.

[0048] Optionally, the rotor is configured to axially move relative to the stator housing from a rest position in which the second runner surface engages the annular contact surface of the ring bearing towards the fluid film thrust bearing responsive to a rotational speed of the rotor exceeding a threshold speed. Optionally, the ring bearing disengages the second runner surface responsive to the rotor axially moving from the rest position towards the fluid film thrust bearing. Optionally, the fluid film thrust bearing is axially spaced apart from the first runner surface by a gap when the rotor is in the rest position, and is axially spaced apart from the first runner surface by the fluid cushion responsive to the rotor axially moving into the gap towards the fluid film thrust bearing.

[0049] Optionally, the one or more runners include one runner that defines both the first runner surface and the second runner surface such that the one runner is disposed axially between the fluid film thrust bearing and the ring bearing.

[0050] Optionally, the one or more runners include a first runner and a second runner that are axially spaced apart along the rotor shaft. The first runner defines the first runner surface, and the second runner defines the second runner surface.

[0051] Optionally, the fluid film thrust bearing is a hydrodynamic air thrust bearing configured to generate an air cushion based on rotational movement of the rotor shaft.

[0052] Optionally, the fluid film thrust bearing is a hydrostatic air thrust bearing configured to generate the fluid cushion by directing fluid from an external fluid source between the fluid film thrust bearing and the first runner surface.

[0053] Optionally, the first runner surface faces vertically upward relative to gravity and the second runner surface faces vertically downward relative to gravity. The fluid film thrust bearing is located above the first runner surface relative to gravity, and the ring bearing is located below the second runner surface relative to gravity.

[0054] Optionally, the fluid film thrust bearing is a foil thrust bearing. Optionally, the ring bearing is a carbon ring.

[0055] Certain embodiments of the present disclosure provide a machine that includes a rotor, a stator housing, and a fluid film thrust bearing. The rotor includes a shaft and one or more runners on the shaft. The shaft is elongated along a shaft axis oriented parallel to gravity between a top end and a bottom end of the shaft. The stator housing surrounds at

least a segment of the shaft including the one or more runners. The fluid film thrust bearing is axially held between an upper surface of the one or more runners and the stator housing. The upper surface faces towards the top end of the shaft. The rotor is configured to axially move relative to the stator housing towards the fluid film thrust bearing from a rest position to a lifted position responsive to a rotational speed of the rotor exceeding a threshold speed. The fluid film thrust bearing is configured to generate a fluid cushion that blocks axial movement of the rotor beyond the lifted position.

[0056] Optionally, the fluid film thrust bearing is mounted to the stator housing and is axially spaced apart from the upper surface at both the rest position and the lifted position of the rotor.

[0057] Optionally, the rotor is biased towards the ring bearing due to the force of gravity and is disposed in the rest position at rotational speeds of the rotor that are slower than the threshold speed.

[0058] Optionally, the machine further includes a ring bearing axially held between a lower surface of the one or more runners and the stator housing. The lower surface faces towards the bottom end of the shaft. The ring bearing has an annular contact surface that engages the lower surface when the rotor is in the rest position to axially support the rotor. Optionally, the ring bearing is axially spaced apart from the lower surface of the one or more runners when the rotor is in the lifted position. Optionally, the one or more runners include a first runner that defines both the upper surface and the lower surface such that the first runner is disposed axially between the fluid film thrust bearing and the ring bearing.

[0059] Certain embodiments of the present disclosure provide a machine that includes a rotor and a thrust bearing assembly. The rotor includes a shaft and one or more runners on the shaft. The shaft is elongated along a shaft axis. The one or more runners include a first runner surface and a second runner surface that face in opposite directions along the shaft axis. The thrust bearing assembly includes a fluid film thrust bearing and a ring bearing. The fluid film thrust bearing is axially located between the first runner surface and a first stator surface of a stator housing. The ring bearing is axially located between the second runner surface and a second stator surface of the stator housing. The rotor is configured to axially move relative to the thrust bearing assembly from a rest position to a lifted position responsive to a rotational speed of the rotor exceeding a threshold speed. The rotor is biased towards the rest position by a biasing force. The ring bearing has an annular contact surface that engages the second runner surface when the rotor is in the rest position to axially support the rotor.

[0060] Optionally, the fluid film thrust bearing generates a fluid cushion that blocks axial movement of the rotor beyond the lifted position without the first runner surface engaging the fluid film thrust bearing.

[0061] Optionally, the biasing force on the rotor towards the rest position is provided by one or more of gravity, a spring, or a magnet.

[0062] Optionally, the ring bearing is axially spaced apart from the second runner surface of the one or more runners when the rotor is in the lifted position.

[0063] Optionally, the ring bearing is a carbon ring.

[0064] As used herein, an element or step recited in the singular and proceeded with the word “a” or “an” should be understood as not excluding plural of said elements or steps, unless such exclusion is explicitly stated. Furthermore, references to “one embodiment” of the presently described subject matter are not intended to be interpreted as excluding

the existence of additional embodiments that also incorporate the recited features. Moreover, unless explicitly stated to the contrary, embodiments “comprising” or “having” an element or a plurality of elements having a particular property may include additional such elements not having that property.

[0065] It is to be understood that the above description is intended to be illustrative, and not restrictive. For example, the above-described embodiments (and/or aspects thereof) may be used in combination with each other. In addition, many modifications may be made to adapt a particular situation or material to the teachings of the subject matter set forth herein without departing from its scope. While the dimensions and types of materials described herein are intended to define the parameters of the disclosed subject matter, they are by no means limiting and are example embodiments. Many other embodiments will be apparent to those of ordinary skill in the art upon reviewing the above description. The scope of the subject matter described herein should, therefore, be determined with reference to the appended claims, along with the full scope of equivalents to which such claims are entitled. In the appended claims, the terms “including” and “in which” are used as the plain-English equivalents of the respective terms “comprising” and “wherein.” Moreover, in the following claims, the terms “first,” “second,” and “third,” etc. are used merely as labels, and are not intended to impose numerical requirements on their objects. Further, the limitations of the following claims are not written in means-plus-function format and are not intended to be interpreted based on 35 U.S.C. § 112(f), unless and until such claim limitations expressly use the phrase “means for” followed by a statement of function void of further structure.

[0066] This written description uses examples to disclose several embodiments of the subject matter set forth herein, including the best mode, and also to enable a person of ordinary skill in the art to practice the embodiments of disclosed subject matter, including making and using the devices or systems and performing the methods. The patentable scope of the subject matter described herein is defined by the claims, and may include other examples that occur to those of ordinary skill in the art. Such other examples are intended to be within the scope of the claims if they have structural elements that do not differ from the literal language of the claims, or if they include equivalent structural elements with insubstantial differences from the literal languages of the claims.

1. A thrust bearing assembly for a machine, the thrust bearing assembly comprising:

- a stator housing configured to surround at least a segment of a rotor shaft and one or more runners on the rotor shaft, the one or more runners including a first runner surface and a second runner surface that face in opposite axial directions along the rotor shaft;
- a fluid film thrust bearing axially held between a first stator surface of the stator housing and the first runner surface, the fluid film thrust bearing configured to generate a fluid cushion that blocks the first runner surface from engaging the fluid film thrust bearing; and
- a ring bearing axially held between a second stator surface of the stator housing and the second runner surface, the ring bearing having an annular contact surface that engages the second runner surface to axially support the rotor shaft.

2. The thrust bearing assembly of claim 1, wherein the stator housing is sized and shaped to allow the rotor shaft and the one or more runners to float axially relative to the fluid film thrust bearing and the ring bearing.

3. The thrust bearing assembly of claim 1, wherein the rotor shaft is configured to axially move relative to the stator housing from a rest position in which the second runner surface engages the annular contact surface of the ring bearing towards the fluid film thrust bearing responsive to a rotational speed of the rotor shaft exceeding a threshold speed.

4. The thrust bearing assembly of claim 3, wherein the ring bearing disengages the second runner surface responsive to the rotor shaft axially moving from the rest position towards the fluid film thrust bearing.

5. The thrust bearing assembly of claim 3, wherein the fluid film thrust bearing is axially spaced apart from the first runner surface by a gap when the rotor shaft is in the rest position, and is axially spaced apart from the first runner surface by the fluid cushion responsive to the rotor shaft axially moving into the gap towards the fluid film thrust bearing.

6. The thrust bearing assembly of claim 1, wherein the one or more runners include one runner that defines both the first runner surface and the second runner surface such that the one runner is disposed axially between the fluid film thrust bearing and the ring bearing.

7. The thrust bearing assembly of claim 1, wherein the one or more runners include a first runner and a second runner that are axially spaced apart along the rotor shaft, the first runner defining the first runner surface, the second runner defining the second runner surface.

8. The thrust bearing assembly of claim 1, wherein the fluid film thrust bearing is a hydrodynamic air thrust bearing configured to generate an air cushion that represents the fluid cushion based on rotational movement of the rotor shaft.

9. The thrust bearing assembly of claim 1, wherein the fluid film thrust bearing is a hydrostatic air thrust bearing configured to generate the fluid cushion by directing fluid from an external fluid source between the fluid film thrust bearing and the first runner surface.

10. The thrust bearing assembly of claim 1, wherein the first runner surface faces vertically upward relative to gravity and the second runner surface faces vertically downward relative to gravity, wherein the fluid film thrust bearing is located above the first runner surface relative to gravity, and the ring bearing is located below the second runner surface relative to gravity.

11. The thrust bearing assembly of claim 1, wherein the fluid film thrust bearing is a foil thrust bearing.

12. The thrust bearing assembly of claim 1, wherein the ring bearing is a carbon ring.

13. A machine comprising:

- a rotor including a shaft and one or more runners on the shaft, the shaft elongated along a shaft axis oriented parallel to gravity between a top end and a bottom end of the shaft;
- a stator housing surrounding at least a segment of the shaft including the one or more runners;
- a fluid film thrust bearing axially held between an upper surface of the one or more runners and the stator housing, the upper surface facing towards the top end of the shaft, and

a ring bearing axially held between a lower surface of the one or more runners and the stator housing, the lower surface facing towards the bottom end of the shaft, the ring bearing having an annular contact surface that engages the lower surface when the rotor is in a rest position to axially support the rotor,

wherein the rotor is configured to axially move relative to the stator housing towards the fluid film thrust bearing from the rest position to a lifted position responsive to a rotational speed of the rotor exceeding a threshold speed, and wherein the fluid film thrust bearing is configured to generate a fluid cushion that blocks axial movement of the rotor beyond the lifted position.

14. The machine of claim **13**, wherein the fluid film thrust bearing is mounted to the stator housing and is axially spaced apart from the upper surface at both the rest position and the lifted position of the rotor.

15. The machine of claim **13**, wherein the rotor is biased towards the ring bearing due to the force of gravity and is disposed in the rest position at rotational speeds of the rotor that are slower than the threshold speed.

16. (canceled)

17. The machine of claim **13**, wherein the ring bearing is axially spaced apart from the lower surface of the one or more runners when the rotor is in the lifted position.

18. The machine of claim **13**, wherein the one or more runners include a first runner that defines both the upper surface and the lower surface such that the first runner is disposed axially between the fluid film thrust bearing and the ring bearing.

19. A machine comprising:

a rotor including a shaft and one or more runners on the shaft, the shaft elongated along a shaft axis, the one or

more runners including a first runner surface and a second runner surface that face in opposite directions along the shaft axis; and

a thrust bearing assembly including a fluid film thrust bearing and a ring bearing, the fluid film thrust bearing axially located between the first runner surface and a first stator surface of a stator housing, the ring bearing axially located between the second runner surface and a second stator surface of the stator housing,

wherein the rotor is configured to axially move relative to the thrust bearing assembly from a rest position to a lifted position responsive to a rotational speed of the rotor exceeding a threshold speed, the rotor biased towards the rest position by a biasing force, wherein the ring bearing has an annular contact surface that engages the second runner surface when the rotor is in the rest position to axially support the rotor.

20. The machine of claim **19**, wherein the fluid film thrust bearing generates a fluid cushion that blocks axial movement of the rotor beyond the lifted position without the first runner surface engaging the fluid film thrust bearing.

21. The machine of claim **19**, wherein the biasing force on the rotor towards the rest position is provided by one or more of gravity, a spring, or a magnet.

22. The machine of claim **19**, wherein the ring bearing is axially spaced apart from the second runner surface of the one or more runners when the rotor is in the lifted position.

23. The machine of claim **19**, wherein the ring bearing is a carbon ring.

24. The thrust bearing assembly of claim **1**, wherein the annular contact surface of the ring bearing extends continuously and uniformly along an entire circumference of the ring bearing.

* * * * *