

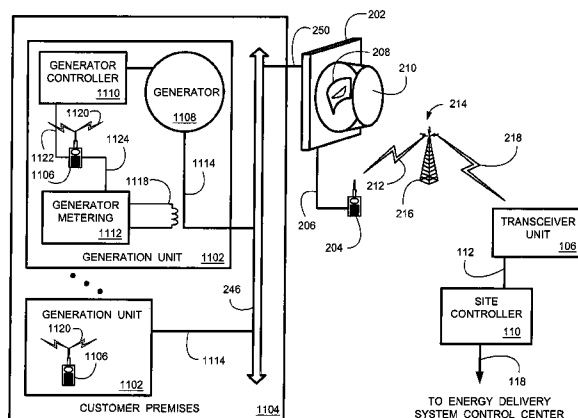
(10) **Patent No.:** US 7,184,861 B2  
(45) **Date of Patent:** Feb. 27, 2007

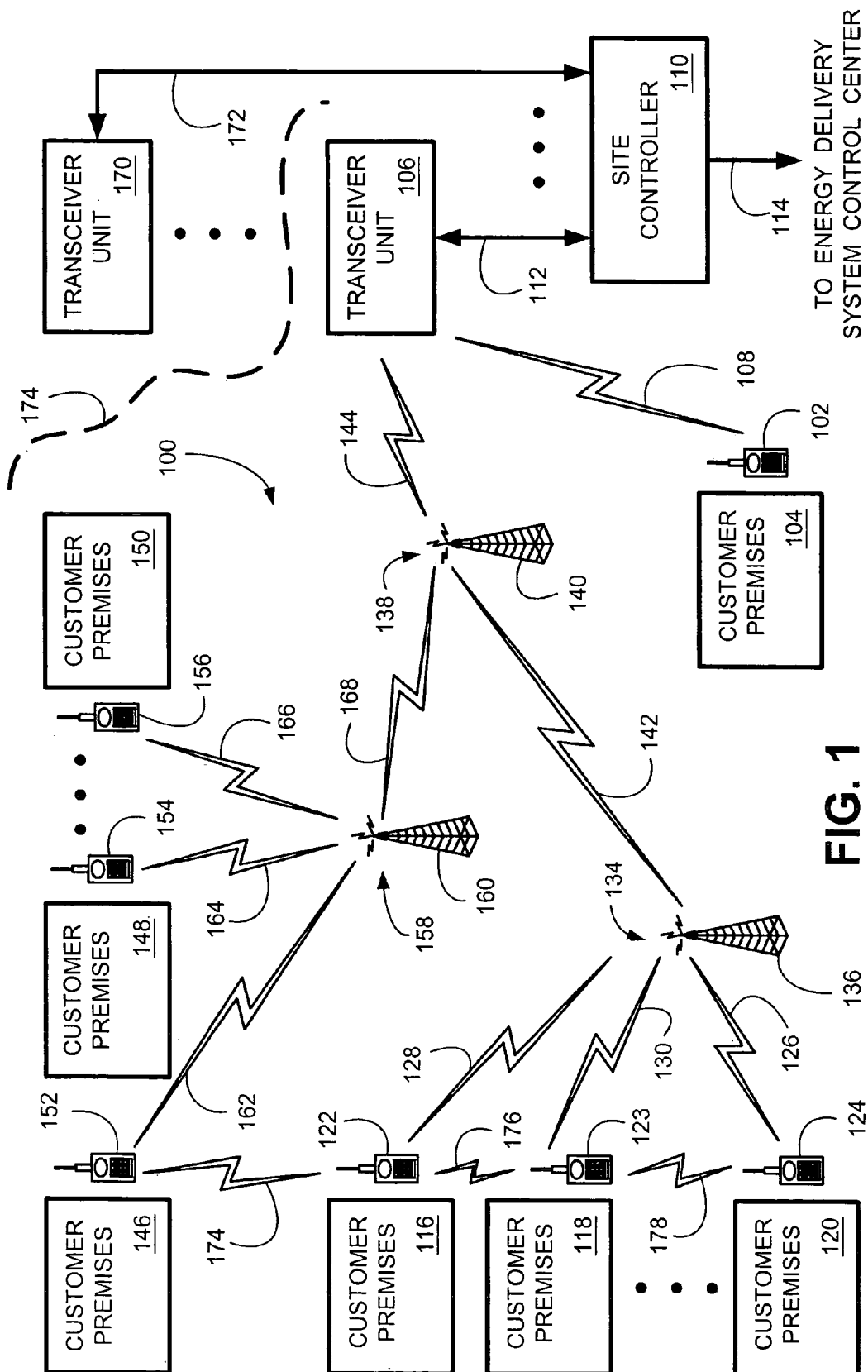
- |           |   |         |                    |            |
|-----------|---|---------|--------------------|------------|
| 4,190,800 | A | 2/1980  | Kelly et al. ....  | 340/310.02 |
| 4,977,515 | A | 12/1990 | Rudden et al. .... | 700/296    |
| 5,576,700 | A | 11/1996 | Davis et al. ....  | 340/3.31   |
| 5,696,695 | A | 12/1997 | Ehlers et al. .... | 700/286    |
| 5,714,931 | A | 2/1998  | Petite et al. .... | 340/539    |

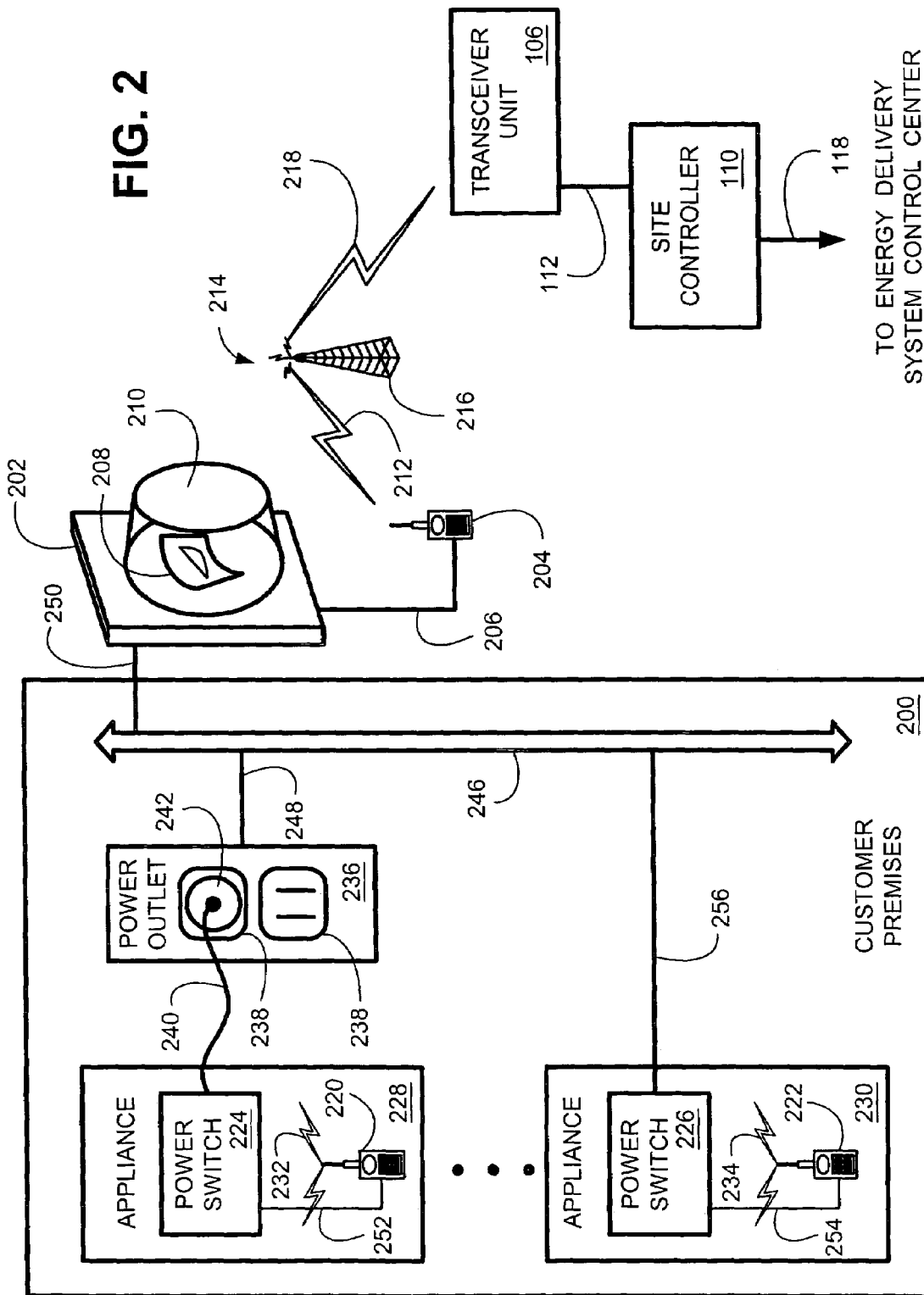
5,926,103	A	7/1999	Petite .....	340/825.19
6,181,985	B1	1/2001	O'Donnell et al. ....	700/295
6,233,327	B1	5/2001	Petite .....	379/155
6,327,541	B1 *	12/2001	Pitchford et al. ....	702/62
6,519,509	B1	2/2003	Nierlich et al. ....	700/286
6,553,418	B1	4/2003	Collins et al. ....	709/224
6,624,532	B1 *	9/2003	Davidow et al. ....	307/39
6,633,823	B2	10/2003	Bartone et al. ....	702/57
6,681,154	B2 *	1/2004	Nierlich et al. ....	700/286
6,747,368	B2 *	6/2004	Jarrett, Jr. ....	307/31
2002/0138176	A1	9/2002	Davis et al. ....	700/286

An intelligent network demand control system provides a system and method for controlling demand in an energy delivery system. The intelligent network demand control system employs a transceiver network with a plurality of transceivers coupled to meters and appliances residing at a plurality of customer premises. Control room operators instruct a customer premises (CP) energy management controller to implement a reduction in system demand. A demand reduction control signal is relayed out to a predefined group of transceivers to bring their respective controlled generators on line. The predefined transceivers, identified by their identification codes, are specified in the demand reduction control signal. When the transceivers bring the generators on line in response to a broadcasted demand reduction control signal, the actual demand reduction is metered and relayed back to the CP energy management controller. The total demand reduction is aggregated into a single number and then communicated to the operators.

## 41 Claims, 15 Drawing Sheets







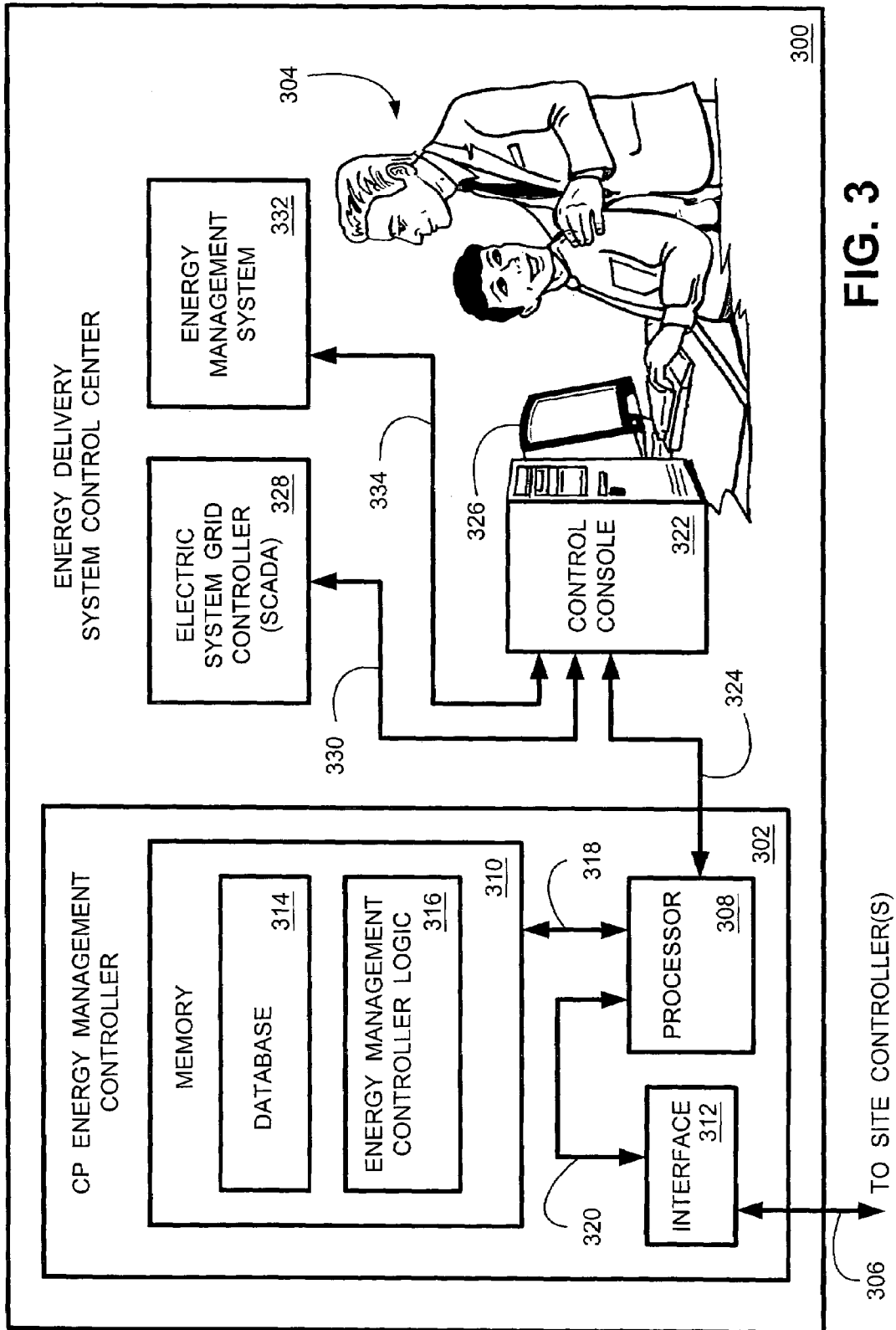


FIG. 3

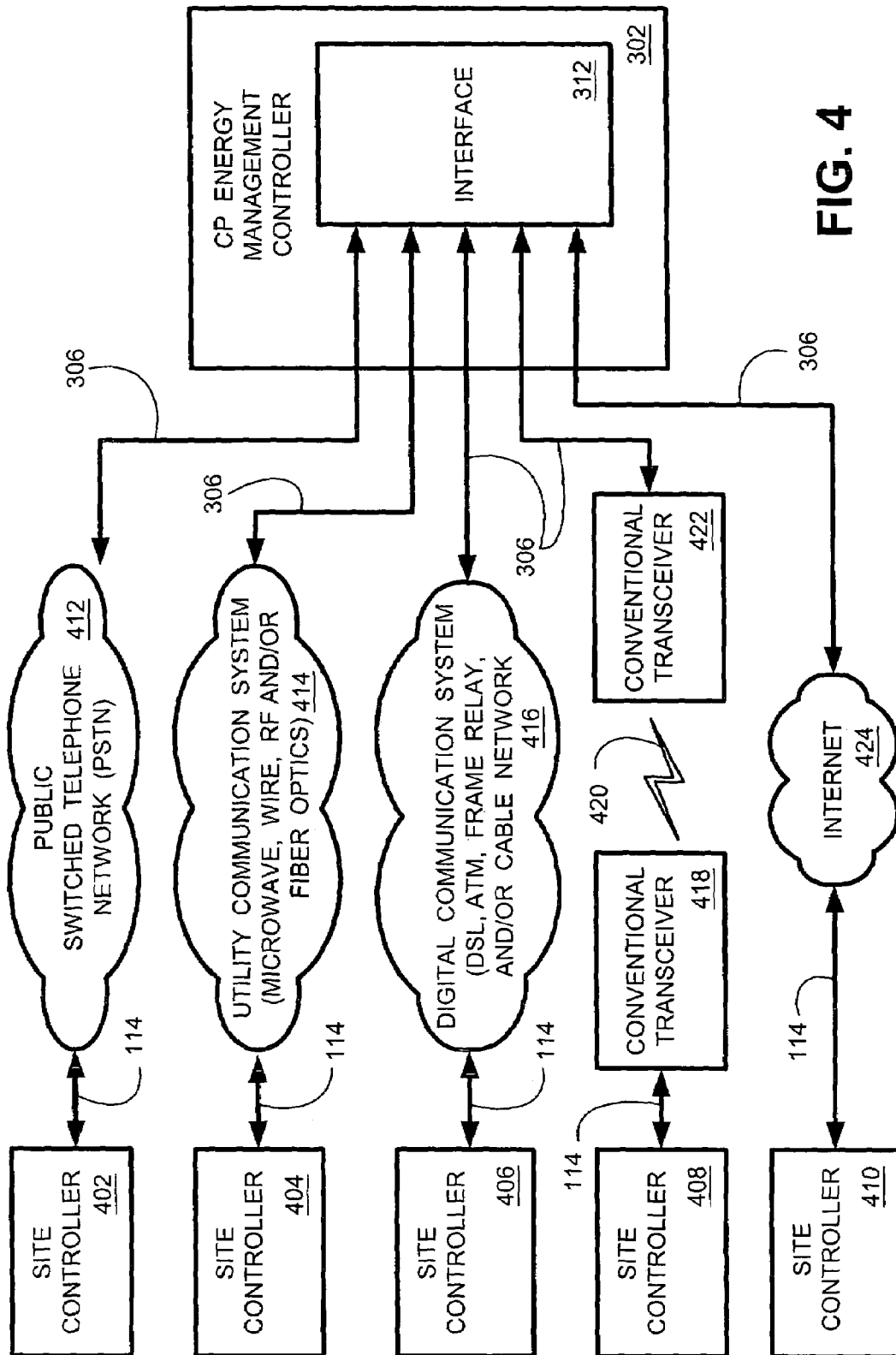
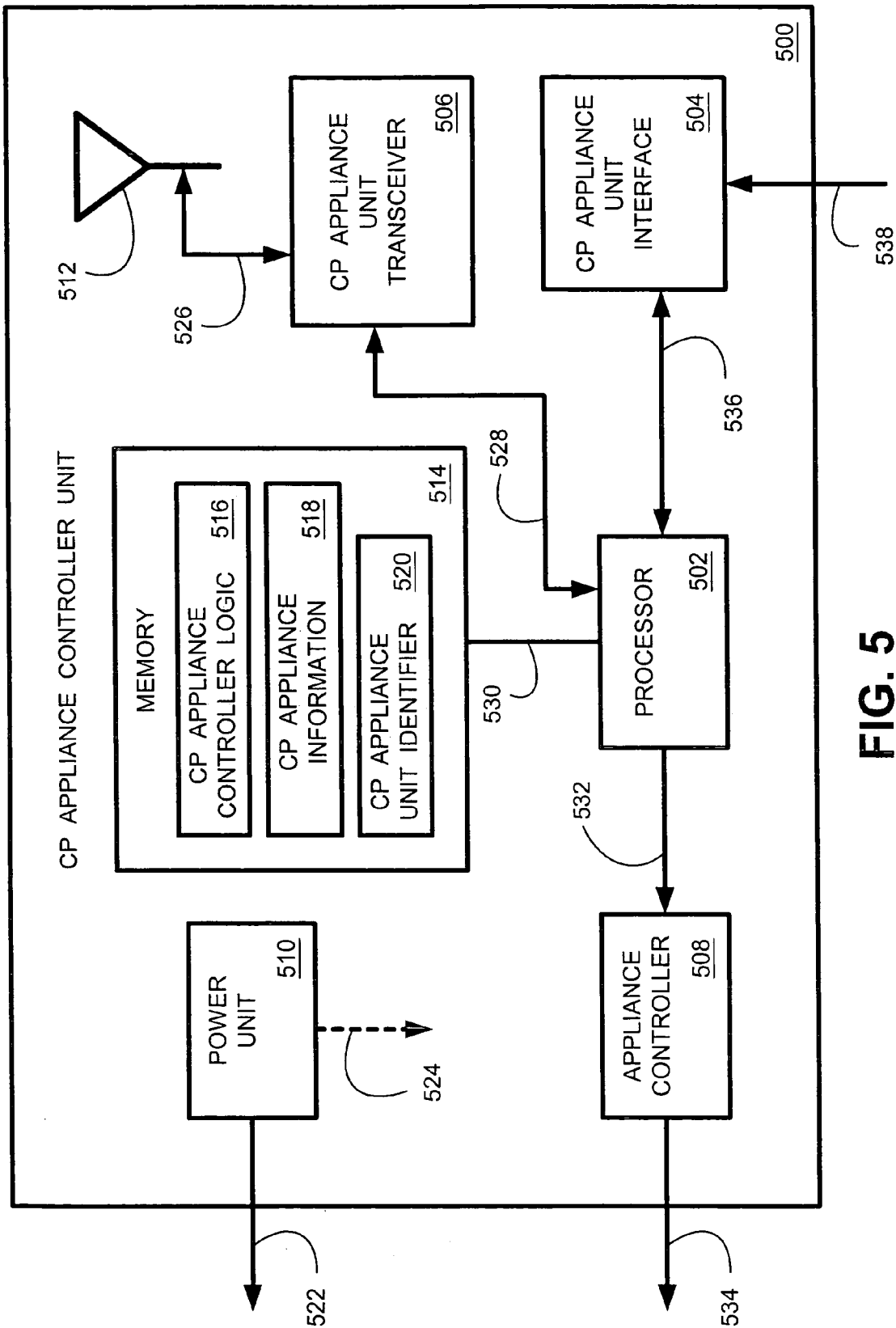


FIG. 4



**FIG. 5**

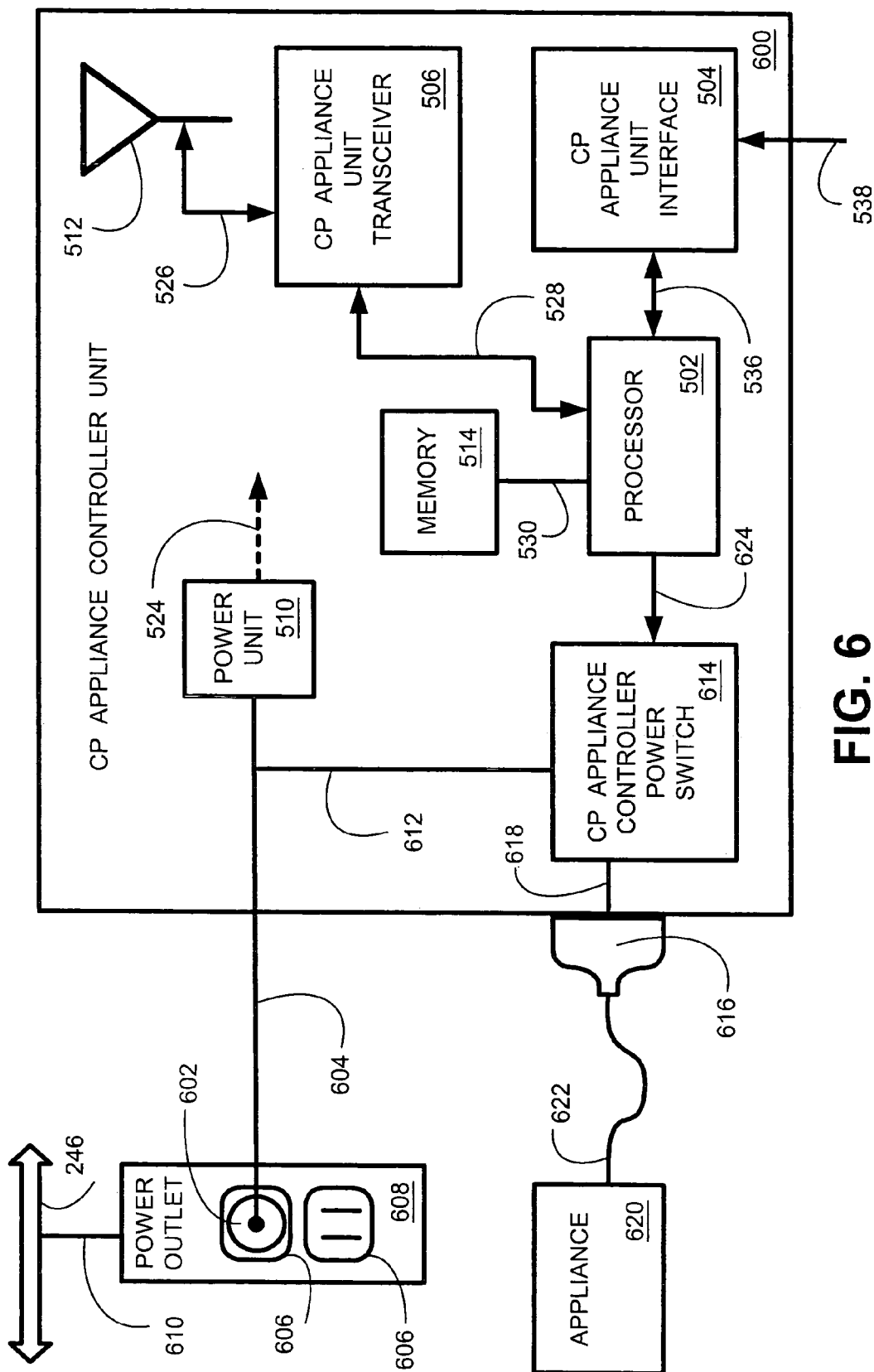
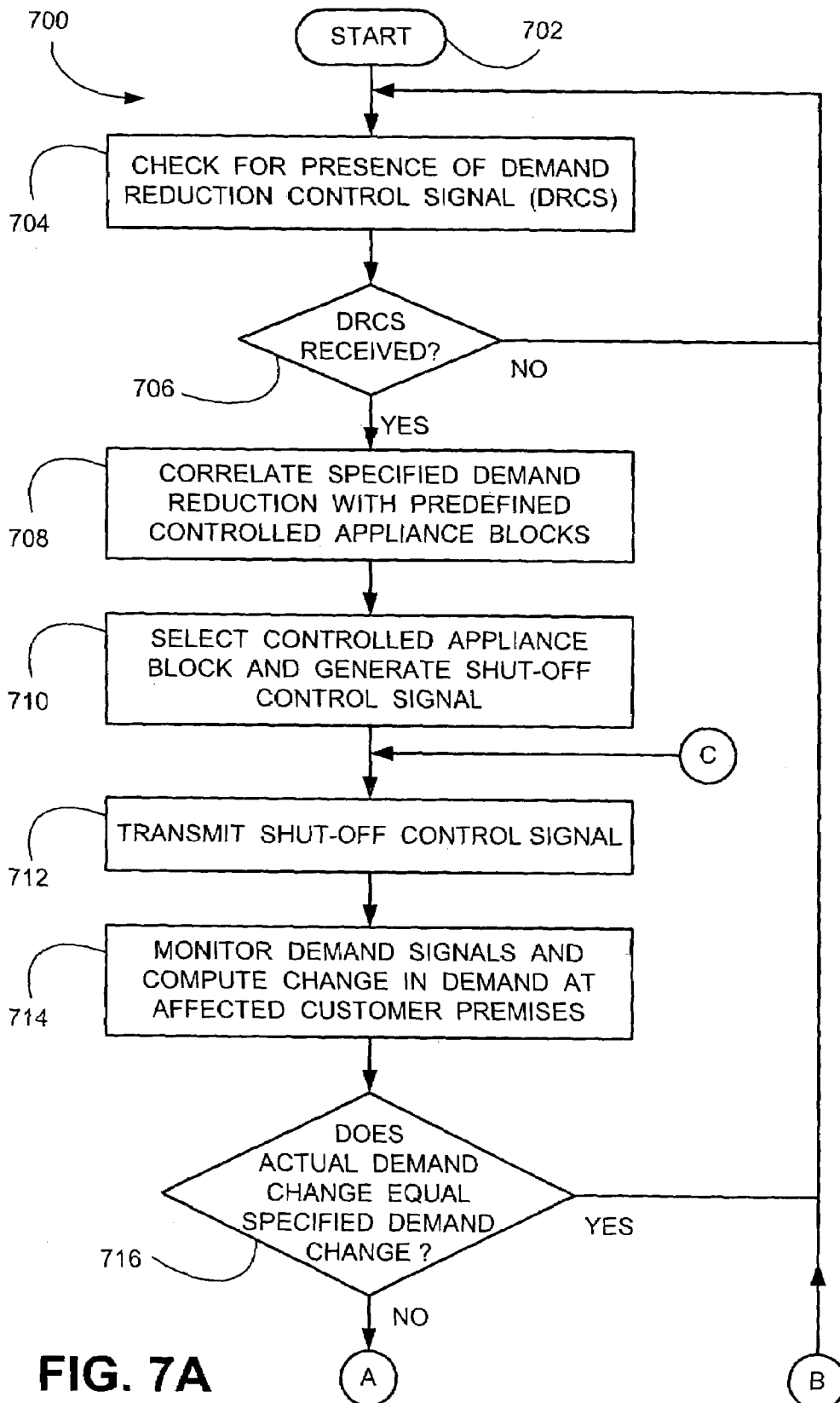
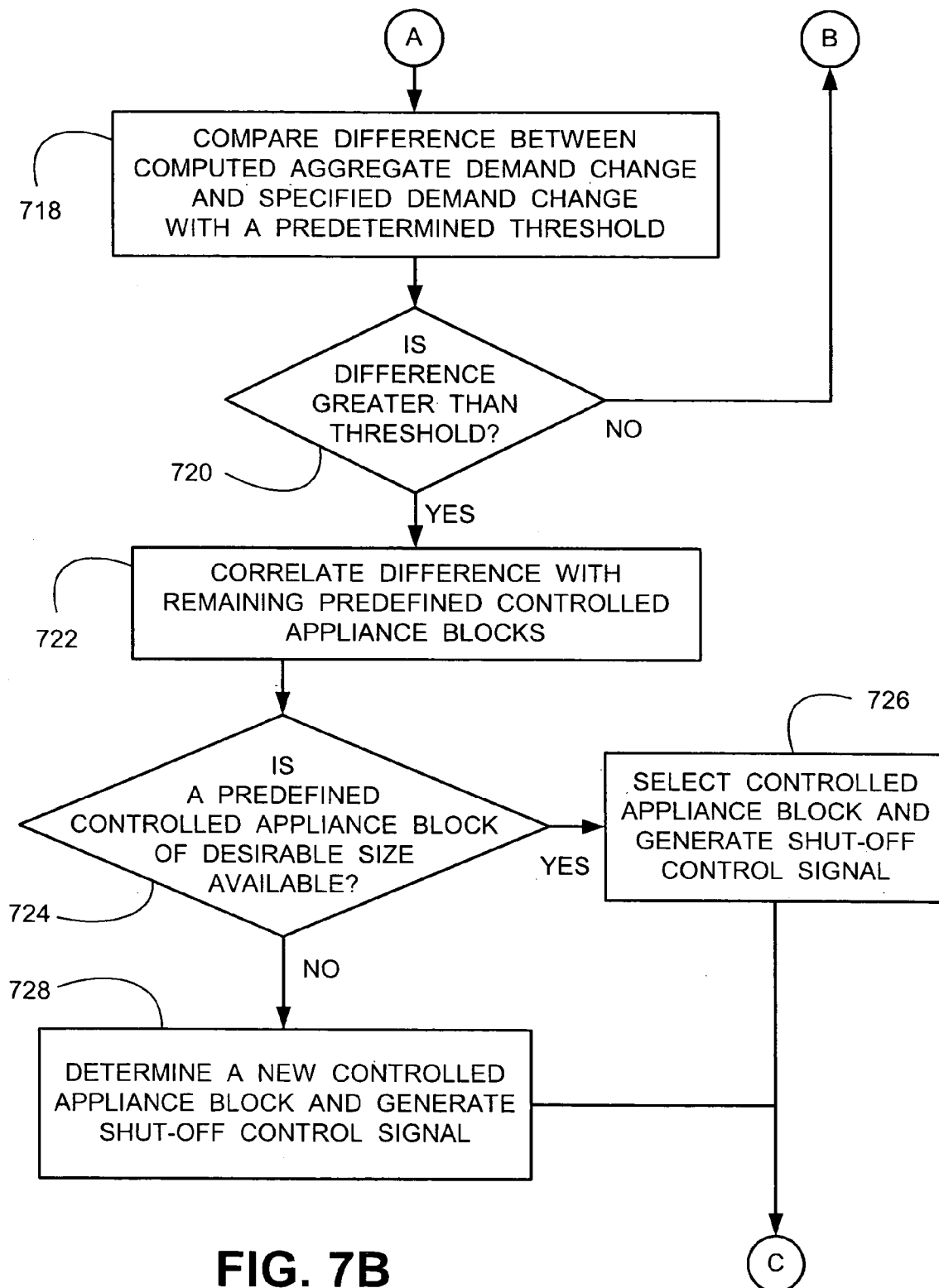
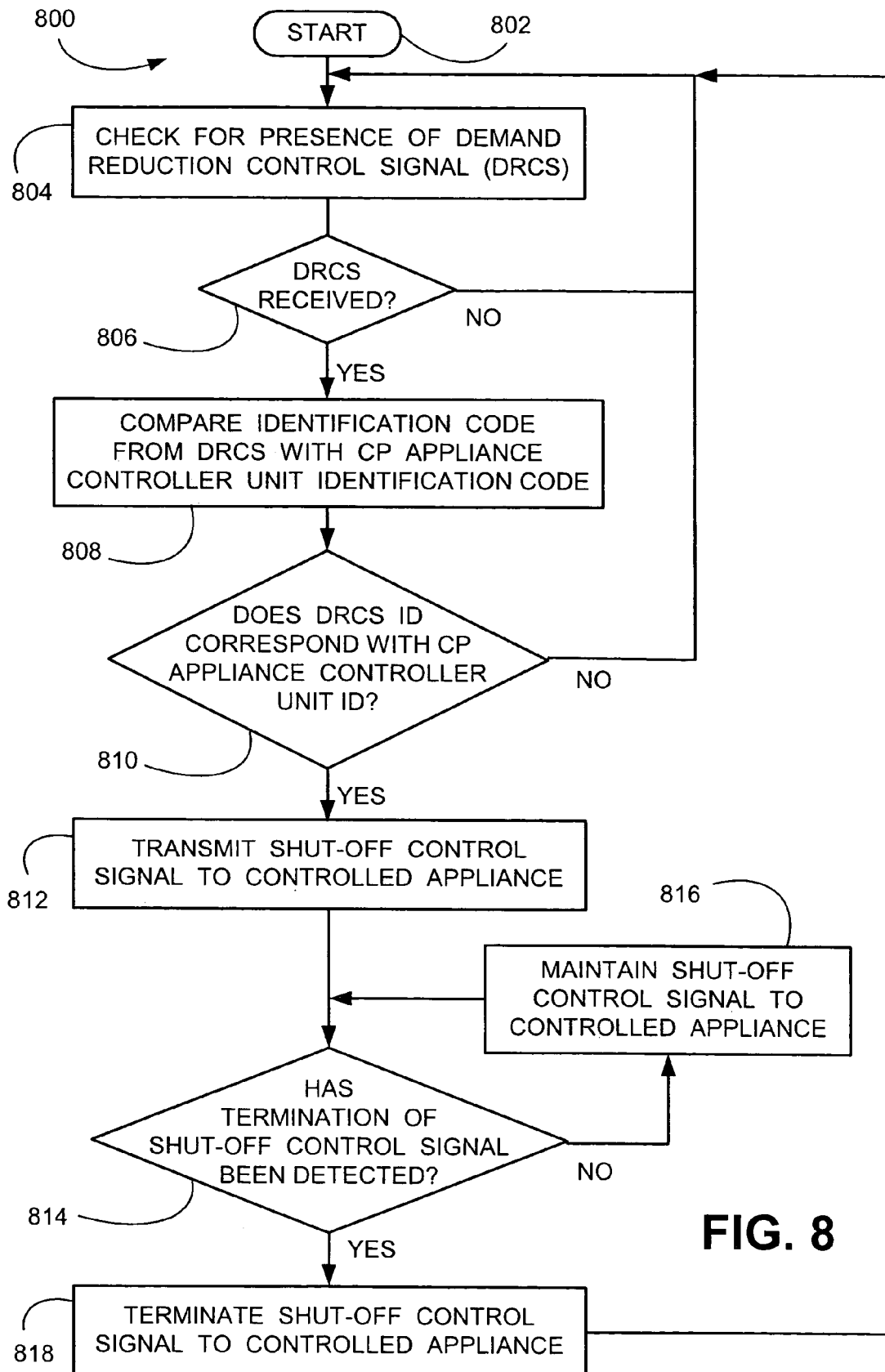


FIG. 6



**FIG. 7B**

**FIG. 8**

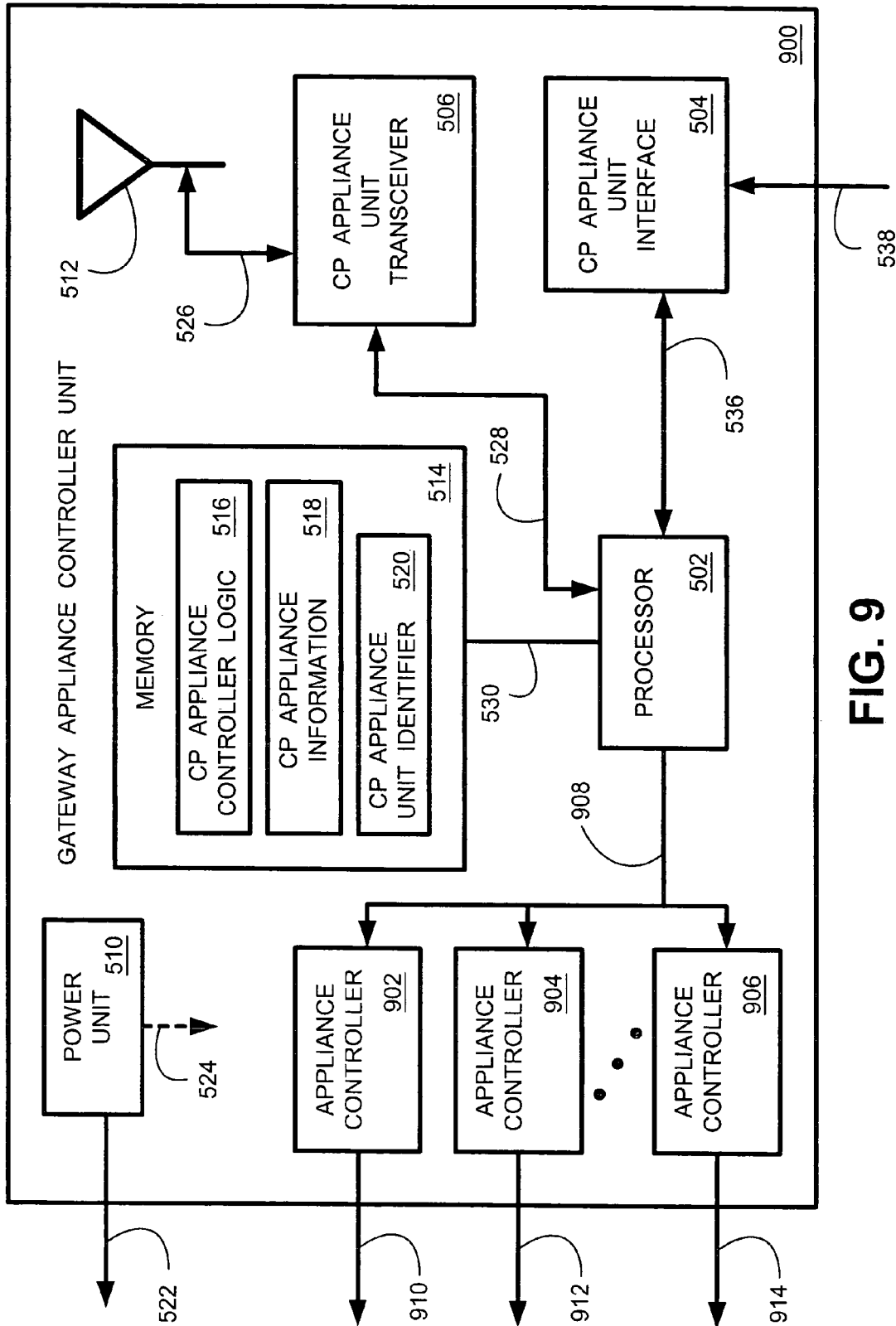


FIG. 9

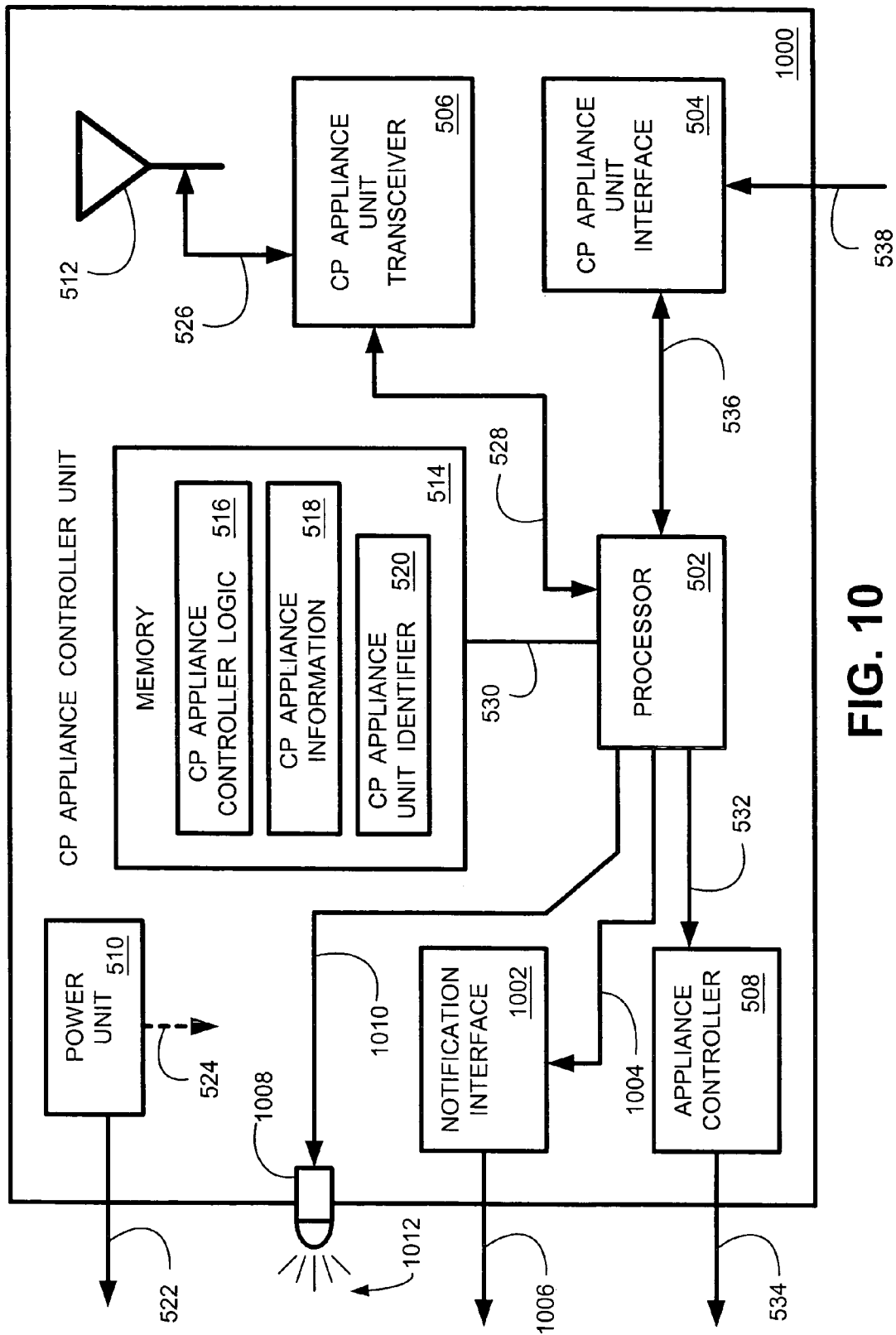
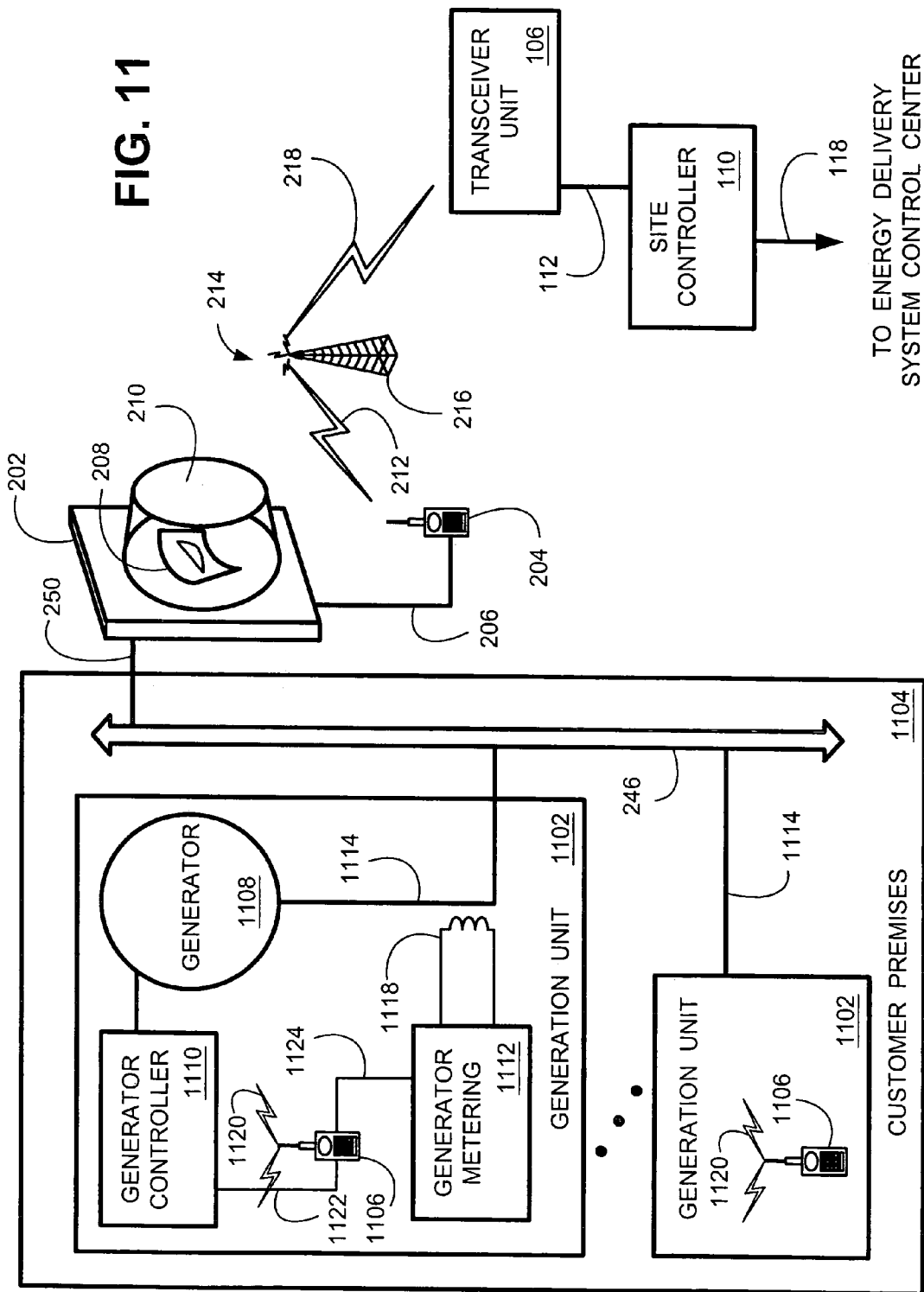
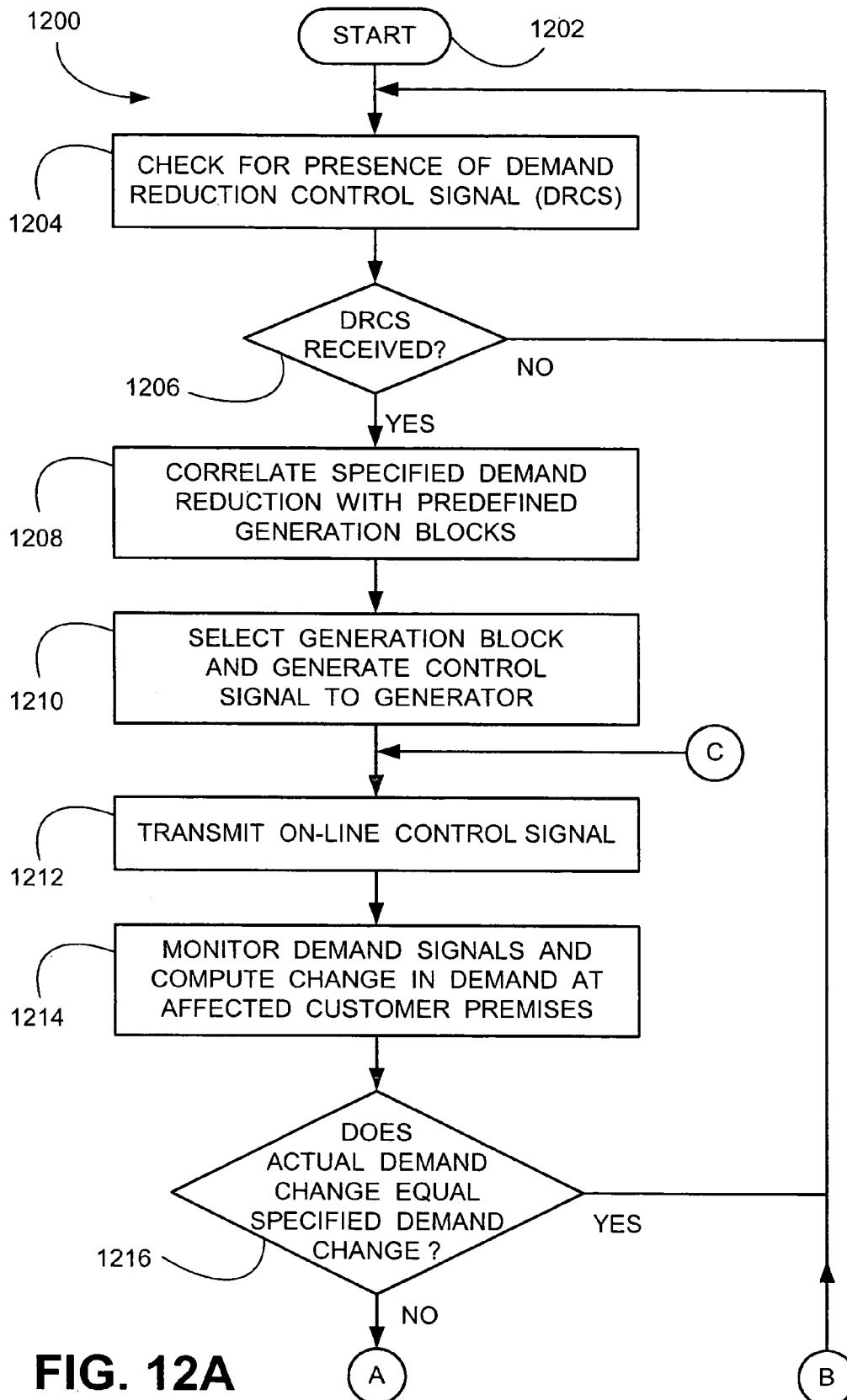
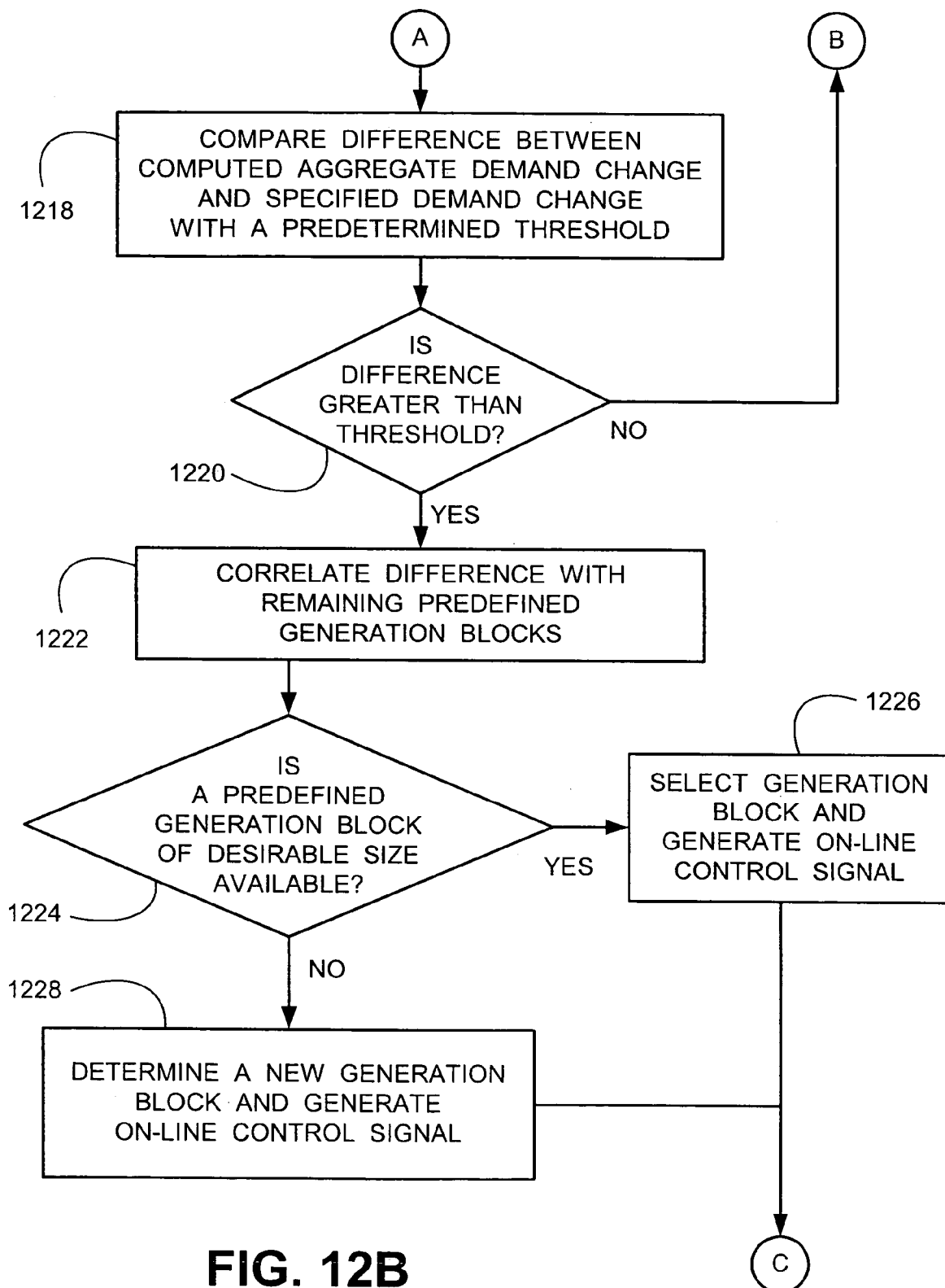


FIG. 10





**FIG. 12B**

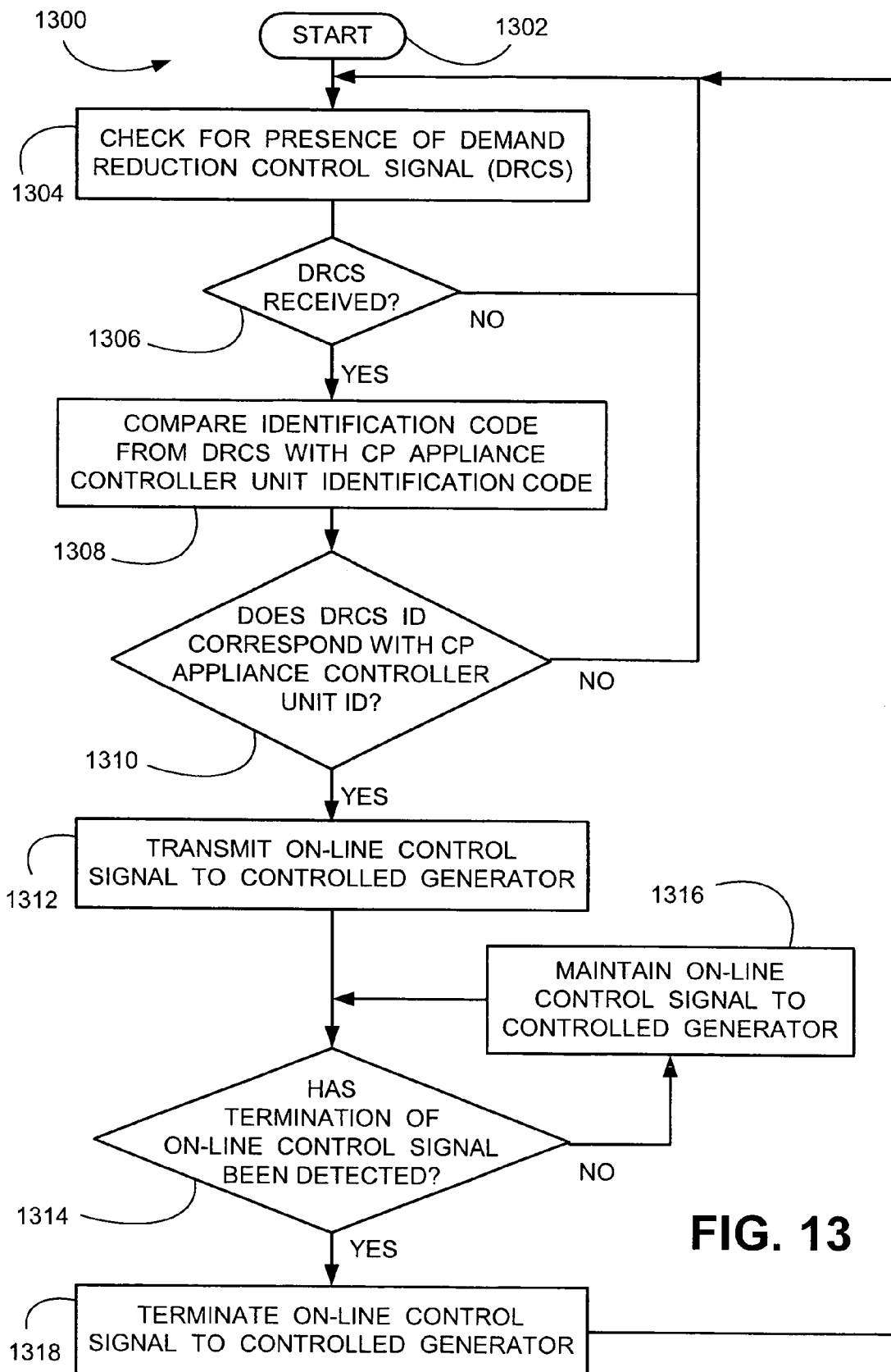


FIG. 13

1

# SYSTEM AND METHOD FOR CONTROLLING GENERATION OVER AN INTEGRATED WIRELESS NETWORK

## CLAIM OF PRIORITY

This application is a divisional of U.S. utility application entitled, "SYSTEM AND METHOD FOR CONTROLLING GENERATION OVER AN INTEGRATED WIRELESS NETWORK," having Ser. No. 10/128,824, filed Apr. 24, 2002 now abandoned, which is a continuation-in-part of, and claims priority to and the benefit of the filing date of Aug. 15, 2001, U.S. patent application Ser. No. 09/929,926 entitled, "SYSTEM AND METHOD FOR CONTROLLING POWER DEMAND OVER AN INTEGRATED WIRELESS NETWORK," having U.S. Pat. No. 6,671,586, issue date of Dec. 30, 2003, which is incorporated herein by reference in its entirety.

## BACKGROUND OF THE INVENTION

### 1. Field of the Invention

The present invention generally relates to controlling power demand in an electric power distribution system and, in particular, to a system and method for generators at customer premises through an integrated wireless communication network.

### 2. Related Art

Electric utilities and other organizations are responsible for supplying an economic, reliable and safe source of electricity to customers. The electric utility or other responsible organization, through its energy delivery system, provides to its customers electricity at a suitable voltage and frequency. This electricity is provided on an instantaneous basis. That is, when the customer turns on the light switch to light a room, the electric utility or other responsible organization provides the electricity to the customer's light bulb the instant that the customer flips the light switch on.

One of the well known difficulties in providing electricity to customers is precisely matching the aggregate amount of electricity consumed by all of the customers on an instantaneous basis with the amount of electricity generated and/or purchased by the providing electric utility or other responsible organization. That is, at any instant in time, the electric utility or other responsible organization must provide exactly the amount of electricity used by all of the customers (plus the associated transmission system losses). The total amount of electricity used by all of the customers at any given instant in time is commonly referred to as demand. Demand typically is measured in units of watts, kilo-watts (kW), mega-watts (MW) or the like. For example, a conventional light bulb may have a demand of 60 watts. One thousand of these light bulbs has a demand of 6 kW. If all one thousand of these light bulbs are all turned on at the same instant in time, the electric utility or other responsible organization must instantly provide an additional 6 kW of electricity (in addition to any associated increases in transmission system losses) by increasing generation or purchases.

Failure by the electric utility or other responsible organization to exactly match the electric demand of their customers with the supply (generation and purchases), during every instant in time, may have very undesirable consequences should the mismatch become significant. When significant mismatches between demand and supply occur, distortions in the electric system frequency occurs. Although the electric system components are designed to operate when the

2

electric frequency is slightly distorted, protective devices coupled to selected components in the electric system are designed to operate to automatically reduce or eliminate significant mismatches between demand and supply. Furthermore, other electricity characteristics may be undesirably distorted, such as voltage, such that other types of protective relays begin to operate.

For example, if the electric utility or other responsible organization loses a generator in an unplanned manner, the electric system demand will exceed supply (because the supply decreases when the generator shuts down). If the mismatch is sufficiently large, the electric frequency will decrease from its nominal value of 60 hertz (Hz). If the frequency drops to below 59.8 Hz, relays sense the frequency decay and operate to selectively disconnect predefined groups of customers from the energy delivery system. That is, power is shut off to some customers. Thus, demand is reduced, hopefully to the point where demand again approximately equals supply such that the frequency recovers back to its nominal 60 Hz value. Disconnecting customer loads to arrest frequency decay is known as load shedding.

Although the action of the frequency sensitive relays effectively arrests the undesirable frequency decay, thereby saving the energy delivery system from a more severe decay in frequency and other undesirable associated problems, those customers that were disconnected are impacted in an undesirable manner. That is, the customers who were selected to participate in the load shedding scheme had their power shut off. The affected customers are inconvenienced when they are disconnected from the energy delivery system, and the affected customers did not volunteer to be selected as participants in the load shedding scheme. Furthermore, the electric utility or other responsible organization loses the associated sales to the affected customers, thereby negatively impacting the electric utility's or other responsible organization's revenue stream.

Electric utilities and the other responsible organizations have implemented a variety of techniques to decrease the frequency of occurrence of these undesirable mismatches between energy demand and supply. One well known technique is to couple selected energy consuming appliances to radio frequency (RF) controlled receivers. Then, when a mismatch in demand and supply occurs, or when the electric utility or other responsible organization anticipates that a mismatch occurrence is eminent, the electric utility or other responsible organization orders the shut off of the selected energy consuming appliances by transmitting a shut-off signal via a RF signal to the RF receivers. Typically, a group of appliances are coordinated to respond to a single RF frequency or a single command delivered to the RF receivers. Such a group of aggregated appliances is commonly referred to as a load block. Thus, by issuing a single shut-off command, appliances in the entire load block can be shut off such that a meaningful decrease in demand occurs.

Participation in such a load block is typically voluntary. Often, customers are offered incentives to participate. For example, a customer can be given a decrease in rate and/or a rebate to voluntarily allow the utility or other responsible organization to couple an RF receiver to their appliance.

For example, a load block can be formed by coupling each one of the above described one thousand light bulbs to RF receivers such that a 6 kW demand reduction is realized (assuming that all of the light bulbs were on prior to sending the shut-off command). However, this is not a very effective technique for reducing demand. The 6 kW decrease in demand does not provide a meaningful demand reduction

because the demand decrease is too small to be of practical help in matching demand of the entire system with supply. Also, the cost of the RF receivers is not likely justifiable for so little of a demand reduction.

On the other hand, forming a load block by connecting one hundred air conditioning units may provide a meaningful technique of reducing demand in a controlled manner. For example, if each air conditioning unit, when on, consumes approximately 10 kW, the electric utility or other responsible organization can reduce demand by as much as 1.0 MW. A 1.0 MW demand reduction is sufficiently large to make a meaningful reduction in system demand. Even if only a portion of the air conditioning units were on at the time the shut-off command was transmitted to the RF receivers, the demand reduction may still be sufficiently large to be meaningful.

Typically, electric utilities or other responsible organizations having such RF controlled energy demand reduction schemes will have a plurality of load blocks that can be selectively shut off depending upon the particular needs at hand. For example, a load block may be designed to provide an expected demand reduction of 5 MW. The system may have eight such blocks. At some point in time, the electric utility or other responsible organization may determine that a 5 MW demand reduction is needed for a two hour period. The eight load blocks would be sequentially shut off for fifteen minute intervals over the two hour period. Such an approach is desirable in that the negative impact to the customers will be minimized since the temperature of the customers' premises is not likely to become noticeably uncomfortable during the 15 minute period that their air conditioners are shut off.

Similarly, the electric utility or other responsible organization may determine that a 40 MW demand reduction is required for fifteen minutes, thereby providing sufficient time to increase generation or purchase additional power. All eight load blocks could be simultaneously shut off, thereby achieving a 40 MW demand reduction. One skilled in the art will appreciate the significant flexibility provided to the electric utility or other responsible organization having access to an energy demand reduction system employing a plurality of RF controlled load blocks.

However, such energy demand reduction systems employing a plurality of RF controlled load blocks have numerous problems and deficiencies. Once a load block is established by configuring an RF communication network to provide a unique shut-off signal, and after a sufficient number of selected appliances are fitted with RF receivers responsive to the shut-off signal, it is difficult to revise, update and/or modify the load block. If the shut-off signal is modified or changed, each individual appliance RF receiver may have to be manually reconfigured. If the amount of the load in the load block is to be changed, individual appliances and/or their RF receivers would have to be added, removed and/or reconfigured on an individual basis. Such changes require the time of a trained technician. Technician time directly equates to an expense to the electric utility or other responsible organization. Furthermore, making significant changes to an established load block will take a considerable amount of time to implement.

Furthermore, there is no way to ascertain the failure of an RF receiver or the associated appliance control equipment. Thus, the shut-off signal sent out to the RF receivers would not have an effect on a failed RF receiver. Only during a manual inspection would the failed RF receiver be detected and fixed.

Another problem associated with conventional RF controlled load blocks arises from the statistical nature of loads serviced by an electric power distribution system. Consider the above described scenario where each one hundred air conditioning units are each in a different residence. During a hot summer day, it is not probable that all one hundred of the air conditioning units will be on all at the same time. An air conditioning unit cycles on and off as needed to maintain temperature of the house according to a temperature range specified by the thermostat in the house. Thus, at any given moment, some of the air conditioners will likely be on and some of the air conditioners will likely be off. Furthermore, the thermostat settings will not be the same for all of the residences. Statistics are used by the electric utility or other responsible organization to estimate, with a reasonable degree of accuracy, how many of the air conditioning units will likely be on at any give instant for an ambient temperature. Thus, the amount of load consumed by the aggregation of the one hundred air conditioners can be estimated. However, an estimate is not an exact number. The electric utility or other responsible organization cannot know with certainty exactly how much load is shut off when the shut-off signal is sent out to the RF receivers.

Another related problem arises from the nature in which the loads are metered (measured). Typically, aggregate customer loads are metered on a real-time basis by monitoring meters residing in the distribution substations. Thus, if the load block is serviced from a single substation (which is not very likely), the electric utility or other responsible organization may get a good approximation of the effect of shutting off the load block by closely monitoring the substation meters. However, other loads are coming on, and going off, at precisely the same time that the shut-off signal is communicated to the load block. So, the meter will, to some degree, falsely imply that shutting off the load block had more, or had less, of an impact than what was in fact achieved by shutting off the load block. For example, the shut-off signal may shut off seventy-five of the one hundred air conditioning units in the load block (twenty five units are not running at the instant that the shut-off signal is sent). However, five air conditioning units not part of the load block may cycle on at substantially the same time that the shut-off signal is transmitted to the load block (a probable event if the substation is providing service to a large number of homes on a hot day). The substation meter would incorrectly imply that only seventy air conditioning units were shut off, when in fact, seventy-five air conditioning units were shut off. Thus, the electric utility or other responsible organization may at best have a good approximation of the effectiveness of shutting off a load block. But, the electric utility or other responsible organization will not know the exact amount of demand reduction realized when the load block is shut off.

Yet another problem with demand reduction systems employing fixed-size load blocks is that it is difficult to readjust changes made in demand, or to fine-tune the demand changes actually realized. A load block is pre-configured to affect a predetermined number of customer appliances (which may or may not actually be operating at any given instant in time). Thus, a load block designed to statistically provide a 10 MW demand reduction cannot be easily reconfigured to provide a 12 MW demand reduction. Furthermore, if a 10 MW demand reduction is desired, the load block designed to statistically provide a 10 MW demand reduction will probably never provide exactly a 10 MW demand reduction. If, for example, the load block provides an actual load reduction of 9 MW, there is no

5

convenient and effective mechanism to fine tune the energy demand reduction system or the load block such that an additional 1 MW demand reduction can be ordered.

Additionally, blocks of generation may be considered as part of a load block, or as a generation block. Generation is tantamount to a negative load (loads consume electricity, generators provide electricity). Accordingly, addition of generation into the system will offset load, thereby reducing demand from the perspective of the electric utility or other responsible organization. For example, a customer may have one or more generator units installed at their customer premises. Often, such generators employ oil, gas or another fuel source such that the generator may be quickly started and brought on-line during emergency conditions. These generators are sometimes referred to as stand-by generators. For example, hospitals often include stand-by generators. When a power service interruption occurs the stand-by generators are quickly brought on line, typically in a matter of seconds, so that critical loads are maintained.

Generally, stand-by generator fuel costs and operating costs are sufficiently high that the customer prefers to purchase electricity from the electric utility or other responsible organization. Accordingly, stand-by generators are typically off-line (out of service). Furthermore, since the electric utility or other responsible organization does not own or control the stand-by generator(s), the stand-by generator(s) can not be conveniently and quickly brought on line by the electric utility or other responsible organization when needed to reduce demand. Even when such stand-by generation is incorporated into a load control scheme or an energy demand reduction scheme, the electric utility or other responsible organization will typically place a manual request for the customer to start up the stand-by generator(s). Such a request, for example, may be made by a telephone call to the customer. However, there is no guarantee that the stand-by generator(s) will be brought on line in a timely manner, nor at a desirable generation level, since the electric utility or other responsible organization is not in direct control of the generator.

Thus, a heretofore unaddressed need exists in the industry for providing a demand reduction and control system that accurately indicates the true amount of demand reduction realized when a shut-off signal is transmitted. Also, there is a heretofore unaddressed need in the industry to provide a demand reduction and control system that provides for real time adjustment of demand on an appliance-by-appliance basis. There is also a heretofore unaddressed need in the industry to automatically detect failure of RF receivers so that repairs can be initiated. Furthermore, there is an unaddressed need to control stand-by generators.

#### SUMMARY OF THE INVENTION

The present invention overcomes the inadequacies and deficiencies of the prior art as discussed hereinabove. One embodiment of the present invention, an intelligent network demand control system, provides a system and method for providing an electric utility or other responsible organization direct control over selected individual customer generators such that the controlled generators may be selectively brought on line (started) during periods of time when the electric utility or other responsible organization desires to reduce system demand. The intelligent network demand control system employs a transceiver network with a plurality of transceivers residing at a plurality of customer premises. A transceiver is coupled to each meter at a plurality of customer premises. Customer premises (CP)

6

appliance controller units, each having a transceiver, are coupled to appliances residing in the plurality of customer premises. The transceivers and CP appliance controller units each have unique identification codes. In one embodiment, transceivers broadcast to and receive radio frequency (RF) signals. A site controller provides communications between the plurality of transceiver units and a CP energy management controller residing in an energy delivery system control center.

Transceivers coupled to the meters provide metered demand information to the site controllers such that the metered demand information is relayed onto the energy delivery system control center. Metered demand information from all customer premises transmitted into the transceiver network are aggregated and then communicated to the control room operators. When the control room operators determine that a reduction in system demand is required, the control room operators instruct the CP energy management controller to implement a demand reduction. The CP energy management controller provides control signals to the site controller specifying a plurality of generators that are to be brought on line, thereby effecting a demand reduction.

The demand reduction control signal issued by the CP energy management controller is relayed to the site controllers out to the plurality of transceiver units coupled to the appliances. In one embodiment, the transceivers are coupled to the generator controller such that when the transceivers receive the demand reduction control signal, the generator is brought on line. That is, when the control room operators instruct the CP energy management controller to implement a reduction in system demand, the CP energy management controller generates a demand reduction control signal which is relayed out to a plurality of predefined transceivers residing in the transceiver network that are configured to start their respective controlled generators. The predefined transceivers are identified by their identification codes which are specified in the demand reduction control signal.

When the transceivers cause the generators to be brought on line, a change in demand is metered by the meters. In one embodiment, transceivers coupled to the meters detect the change in metered demand and transmit the information to the CP energy management controller. Thus, when a plurality of generators are brought on line in response to a broadcasted demand reduction control signal over the transceiver network, the demand reduction occurring at each customer premises is metered and the metered demand change is determined by the CP energy management controller on a real-time basis such that the total demand reduction is aggregated into a single number and then provided to the control room operators.

In one embodiment, the control room operators may review the total demand reduction realized and may then, if desired, instruct the CP energy management controller to implement a second round of demand reduction by issuing a second demand reduction control signal out to another generation block (plurality of pre-defined generators).

In another embodiment, the CP energy management controller may compare the initial total metered demand reduction with a specified demand reduction, and if the initial demand reduction is less than the specified demand reduction, the CP energy management controller automatically initiates a second round of demand reductions. With this alternative embodiment, if the initial demand reduction exceeds the specified demand reduction, the CP energy management controller would issue a control signal out to selected transceivers allowing their generators to adjust power output, thereby fine tuning the actual demand reduc-

7

tion to be substantially equal to the specified demand reduction requested by the control room operators.

The present invention can also be viewed as providing a method for controlling demand in an energy delivery system. In one embodiment, the method includes the steps of generating a demand reduction control signal by an energy management controller; transmitting the demand reduction control signal from the energy management controller to at least one of a plurality of appliance control units, each one of the plurality of appliance control units coupled to at least one generator; starting the generator coupled to the appliance control unit in response to receiving the demand reduction control signal; metering a first change in demand at a plurality of meters, each one of the meters configured to detect an output from the generators; and determining a first aggregate change in demand.

Other features and advantages of the present invention will become apparent to one skilled in the art upon examination of the following detailed description, when read in conjunction with the accompanying drawings. It is intended that all such features and advantages be included herein within the scope of the present invention and protected by the claims.

#### BRIEF DESCRIPTION OF THE DRAWINGS

The invention can be better understood with reference to the following drawings. The elements of the drawings are not necessarily to scale relative to each other, emphasis instead being placed upon clearly illustrating the principles of the invention. Furthermore, like reference numerals designate corresponding parts throughout the several views.

FIG. 1 is a block diagram illustrating a portion of a plurality of transceivers residing at a plurality of customer premises.

FIG. 2 is a block diagram illustrating selected transceivers residing in one of the exemplary customer premises of FIG. 1.

FIG. 3 is a block diagram illustrating selected components of an energy delivery system control center in communication with the transceiver network of FIG. 1.

FIG. 4 is a block diagram illustrating alternative communication systems employed by the intelligent network demand control system of FIGS. 1-3.

FIG. 5 is a block diagram illustrating an embodiment of a customer premises (CP) appliance controller unit residing in the customer premises appliance controller unit of FIG. 2.

FIG. 6 is a block diagram illustrating an alternative embodiment of CP appliance controller unit of FIG. 2.

FIGS. 7A and 7B are flow charts illustrating a process for issuing a demand reduction control signal by the CP energy management controller of FIG. 3.

FIG. 8 is a flow chart illustrating a process for receiving a demand reduction control signal by the CP appliance controller unit of FIGS. 5 and 6.

FIG. 9 is a block diagram illustrating an alternative embodiment of a gateway appliance controller unit.

FIG. 10 is a block diagram illustrating an alternative embodiment of a CP appliance controller unit configured to provide notification that the CP appliance controller unit has received and implemented a demand reduction control signal to its controlled appliances.

FIG. 11 is a block diagram illustrating an exemplary customer premises of FIG. 1 having generators controlled by transceivers according to the present invention.

8

FIGS. 12A and 12B are flow charts illustrating a process for issuing a demand reduction control signal by the CP energy management controller of FIG. 3 to a generation unit.

FIG. 13 is a flow chart illustrating a process for receiving a demand reduction control signal by a CP appliance controller unit of FIG. 5 such that a controlled generator is brought on line.

#### DETAILED DESCRIPTION

##### a. Overview of the Intelligent Network Demand Control System

In general, the present invention relates to a system and method for providing an electric utility or other responsible organization direct control over selected customer loads such that the controlled loads are selectively shut off during periods of time when the electric utility or other responsible organization desires to reduce system demand. System demand is defined herein to be the instantaneous amount of electricity, including customer loads and electric system transmission losses, that the electric utility or other responsible organization either generates or purchases to provide service to its customers. Customers are defined herein to include residential customers (individuals or families living in homes, apartments, condominiums or the like), retail customers (such as retail stores, shopping malls, small businesses or the like) and wholesale customers (such as manufacturers, producers or the like). Although the characteristics of residential customers, retail customers and wholesale customers are very different from each other, the intelligent network demand control system is designed to apply equally well to any customer class.

FIG. 1 is a block diagram illustrating a portion of a transceiver network 100 having a plurality of transceivers residing at a plurality of customer premises. A transceiver 102, described in detail below, is coupled to a meter (not shown) of the customer premises 104. Transceiver 102 broadcasts to and receives from the transceiver unit 106 radio frequency (RF) signals 108. The site controller 110 provides communications between the transceiver unit 106, via connection 112, and the energy delivery system control center 300 (FIG. 3), via connection 114.

FIG. 2 is a block diagram illustrating selected transceivers residing in one of the exemplary customer premises of FIG. 1. The meter customer premises 200 includes a meter 202 that is coupled to the transceiver 204, via the connection 206. The meter 202, in one embodiment, is a conventional utility grade residential customer meter having a face plate 208 that is visible through the cover 210. However, transceiver 204 may be configured to couple to any meter type.

Transceiver 204 detects actual instantaneous electrical usage (hereinafter defined as metered demand) that is metered by the meter 202. Transceiver 204 broadcasts RF signals 212 to a transceiver station 214 that would typically reside at a suitably elevated location, such as on tower 216. Transceiver station 214 transmits an RF signal 218 to the transceiver unit 106. The transceiver unit 106 provides the metered demand information to the site controller 110 such that the metered demand information is relayed on to the energy delivery system control center 300 (FIG. 3).

FIG. 3 is a block diagram illustrating selected components of an energy delivery system control center 300 in communication with the transceiver network 100 (FIG. 1). The customer premises (CP) energy management controller 302 receives the metered demand information from the site controller 110 (FIGS. 1 and 2), via connection 306. Then

metered demand information from all of the customer premises is aggregated and, in one embodiment, is then communicated to at least one of the control room operators **304**.

The control room operators **304** are responsible for operation of the energy delivery system that is controlled by the electric utility or other responsible organization. When the control room operators **304** determine that a reduction in system demand is required, the control room operators **304** instruct the CP energy management controller **302** to implement a demand reduction. The CP energy management controller **302**, in a manner described in detail below, provides control signals to the site controller **110** (FIGS. 1 and 2) specifying a plurality of appliances (a load block) that are to be shut off, thereby effecting a demand reduction.

A demand reduction control signal issued by the CP energy management controller **302** (FIG. 3) is relayed to the site controller **110** out to a plurality of transceiver units, such as the transceiver unit **106** (FIGS. 1 and 2). Transceiver unit **106**, in a manner described in detail below, broadcasts an RF signal **218** to the transceiver station **214** (FIG. 2). In one embodiment, the transceiver station **214** relays the demand reduction control signal to the transceiver **204**, which further relays the demand reduction control signal to the transceivers **220** and **222** that are coupled to the power switches **224** and **226** of the appliances **228** and **230**, respectively. Alternatively, the transceiver station may be configured to relay the demand reduction control signal directly to the transceivers **220** and/or **222**.

When the transceivers **220** and **222** receive the demand reduction control signal, via the RF signals **232** and **234**, respectively, the appliances **228** and **230** are shut off. That is, when the control room operators **304** instruct the CP energy management controller **302** (FIG. 3) to implement a reduction in system demand, the CP energy management controller **302** generates a demand reduction control signal which is relayed out to a plurality of transceivers residing in the transceiver network **100** (FIG. 1) that are configured to shut off their respective controlled appliances.

When the transceivers **220** and **222** shut off the appliances **228** and **230**, respectively, demand is detected by the meter **202** (FIG. 2). Transceiver **204** detects the new metered demand and relays the new metered demand to the CP energy management controller **302** (FIG. 3) via the transceiver station **214**, the transceiver unit **106** and the site controller **110**. When a large number of appliances are shut off in response to a broadcasted demand reduction control signal over the transceiver network **100** (FIG. 1), the actual demand reduction occurring at each customer premises is metered and the metered demand is relayed back to the CP energy management controller **302** such that the total demand reduction is aggregated into a single number and then provided to the control room operators **304** on a real-time basis. In one embodiment, the control room operators **304** review the total demand reduction realized and may then, if desired, instruct the CP energy management controller **302** to implement a second round of demand reduction by issuing a second demand reduction control signal out to a second load block (a plurality of pre-defined appliances).

In another embodiment, the CP energy management controller **302** compares the total metered demand reduction with a specified demand reduction, and if a demand reduction is less than the specified demand reduction, the CP energy management controller **302** automatically initiates a second round of demand reductions. With this alternative embodiment, if the total demand reduction exceeded the specified demand reduction, the CP energy management

controller **302** issues a control signal to selected appliances allowing those appliances to re-power, thereby fine tuning the actual demand reduction to substantially equal the specified demand reduction requested by the control room operators **304** (FIG. 3).

#### b. Intelligent Network Command Control System Environment

FIG. 1 is a block diagram illustrating a portion of a transceiver network **100** in communication with a plurality of transceivers residing at a plurality of customer premises. For convenience of illustration, and for convenience of explaining the operation and functionality of the intelligent network demand control system, only a few customer premises are illustrated on FIG. 1. An intelligent network demand control system is configured to provide control, in a manner described below, to many hundreds of appliances, even many thousands of appliances, depending upon the particular demand reduction requirements of the electric utility or other responsible organization in which the intelligent network demand control system is implemented in. Therefore, the explanation of the operation and functionality of the intelligent network demand control system described below is for only a small segment of the transceiver network **100**.

A first group of customer premises **116**, **118** and **120**, each having a meter (not shown) coupled to a transceiver **122**, **123** and **124**, respectively. The metered demand from each of the customer premises **116**, **118** and **120** is relayed to the CP energy management controller **302** (FIG. 3) by the transceivers **122**, **123** and **124**, respectively. Each of the transceivers **122**, **123** and **124** broadcasts an RF signal **128**, **130** and **126**, respectively, to the transceiver station **134** that resides on the tower **136**. Metered demand information from the transceivers **122**, **123** and **124** is relayed by the transceiver station **134** to the transceiver station **138** residing on tower **140** via the RF signal **142**. The metered demand signals are then relayed from the transceiver station **138** to the transceiver unit **106** via RF-signal **144**.

One embodiment of the intelligent network demand control system employs transceivers that use standardized digital communication formats such that the information is communicated as packetized units of digital data. Other embodiments employ other suitable communication formats.

The transceiver unit **106** converts received signals, such as the received RF signal **144**, into a suitable communication signal formatted for communication over a hardwire connection **112**. In one embodiment, the transceiver unit **106** formats the received broadcasted RF signals into a standardized RF 232 signal. Another embodiment converts the received broadcasted metered demand information into a standardized RS 485 signal. One skilled in the art will appreciate that transceiver unit **106** may be configured to convert the received RF broadcast signals from the transceivers and/or transceiver stations of the transceiver network **100** into any suitable signal for transmission over a hardwire interconnection, such as, but not limited to, a metallic conductor, a coaxial cable, an optical fiber cable or the like.

Similarly, a second grouping of customer premises **146**, **148** and **150** are illustrated. Meters (not shown) residing at each of the customer premises **146**, **148** and **150** are coupled to the transceivers **152**, **154** and **156**, respectively. Transceivers **152**, **154** and **156** are in communication with the transceiver station **158**, located on the top of tower **160**. Metered demand information from each of the customer premises is relayed by the transceivers **152**, **154** and **156** via

11

broadcasted RF signals **162**, **164** and **166**, respectively. The transceiver station **158** relays the metered demand information to transceiver **138** via a broadcasted RF signal **168**. The metered demand signals broadcasted by the transceivers **152**, **154** and **156** are relayed to the CP energy management controller **302** (FIG. 3) in a manner described above.

When many additional customer premises are added to the first grouping of customer premises **116**, **118** and **120**, such that when the meters of the many additional customer premises are coupled to transceivers and integrated into the transceiver network **100**, one skilled in the art will appreciate that a large network of transceivers will be communicating metered demand information to the CP energy management controller **302**, via transceiver stations **134** and **138**. Similarly, many other customer premises may be integrated into the second grouping of customer premises **146**, **148** and **150**. For convenience of illustration, only two groupings of customer premises are illustrated in FIG. 1. Many other groupings of customer premises may be incorporated into the transceiver network **100** such that all of the transceivers of the customer premises are communicating to the CP energy management controller **302** via the transceiver network **100**.

One skilled in the art will appreciate that the portion of the transceiver network **100** illustrated in FIG. 1 is configured according to the strength of the broadcasted signal from the plurality of transceivers, and the strength of the broadcasted signal from the plurality of transceiver stations. Thus, many more customer premises can be configured to communicate with any number of a plurality of transceiver units located out in the service territory of the electric utility or other responsible organization. For example, a transceiver unit **170** is illustrated coupled to the site controller **110** via connection **172**. Transceiver unit **170** is configured to communicate with another transceiver network (not shown). Thus, transceiver unit **170** may serve one geographic region and transceiver unit **106** may service a different geographic region. Cut-away line **174** indicates separation of the geographic regions. However, the geographic regions are, in reality, artificial in that any transceiver may communicate with any other transceiver unit so long as its broadcast signal strength is sufficient to be detected by the transceiver unit. Thus, any boundary associated with a geographic region is easily redefined or changed by simply reconfiguring the defined communication path for a transceiver, as described in greater detail below.

Site controller **110** is configured to output to and communicate with any desired number of transceiver units. Furthermore, a plurality of site controllers can be deployed within the service territory of the electric utility or other responsible organization, thereby increasing the area of coverage of the transceiver network **100**. There are no known limitations that would limit the number of transceivers in communication with the energy delivery system control center **300** (FIG. 3) when a suitable number of transceiver units and site controllers are implemented with a plurality of transceivers to form a transceiver network **100**.

Site controller **110**, in another embodiment, is configured to include other functionalities. Such functionalities may be implemented in a site controller without departing substantially from the operation and functionality of the invention. For example, a site controller may continuously monitor or periodically monitor metered demand at each of the transceiver monitored meters. The monitored demand information may further be aggregated and stored for transmission to the CP energy management controller **302** (FIG. 3) at predefined periodic intervals. Such an embodiment is par-

12

ticularly advantageous in providing demand information such that load demand curves for monitored meters may be established. Thus, such a site controller would include other components, such as a memory and a processor. Such alternative embodiments of a site controller including additional functionality and additional components are intended to be included within the scope of this disclosure and to be protected by the accompanying claims.

Furthermore, for convenience of illustration, the site controller **110** and the transceiver unit **106** are illustrated as separate components coupled together via connection **112**. In another embodiment, the transceiver unit **106** and the site controller **110** are incorporated into a single unit that performs substantially the same functionality of the transceiver unit **106** and the site controller **110**. Alternatively, the transceiver unit **106** and site controller **110** may be conveniently included in the same housing. Such an alternative embodiment is particularly advantageous when it is desirable to centrally locate components to provide easy access and/or when it is desirable to enclose the devices in a single environmentally protective enclosure.

Each one of the transceivers, transceiver stations and transceiver units, have a unique identification code, such as a unique alpha-numeric identification code, a hexa-decimal code, or a like identification code. For example, transceiver **102** may have the unique identification code "102". When demand information from the customer premises **104** is relayed by the transceiver **102** to the CP energy management controller **302**, the metered demand information is tagged or otherwise identified with the unique identity code "102". Thus, CP energy management controller **302** receives actual metered demand information from customer premises **104** whenever the transceiver **102** broadcasts the information. Furthermore, the CP energy management controller **302** may specifically poll the transceiver **102** to provide metered demand information by broadcasting a signal, using the unique identification code "102", such that the transceiver **102** recognizes that it is instructed to broadcast the metered demand information back to the CP energy management controller **302**. Thus, the CP energy management controller **302** is in communication with all of the individual transceivers of FIG. 1 such that the received metered demand information is associated with specific customer premises. Furthermore, the CP energy management controller **302** may request a reading of the metered demand information from any desired customer premises integrated into the intelligent network demand control system by polling customer premises meter transceivers of interest.

FIG. 2 is a block diagram illustrating selected customer premises (CP) appliance controller units **220** and **222** residing in one of the exemplary customer premises **200**. The exemplary customer premises **200** is a simplified representation of any customer premises which is integrated into the transceiver network **100** (FIG. 1). Thus, the customer premises **200** may be a residential type customer, an industrial type customer, wholesale type customer or other suitable customer.

Residing in the customer premises **200** are a plurality of appliances. Many appliances (not shown) residing in the customer premises **200** are not suitable for integrating into the intelligent network demand control system. For example, if the customer premises **200** is a residential type customer, appliances such as televisions, light fixtures or hair dryers are not suitable for integrating into an intelligent network demand control system. Appliances such as a television or the like are not suitable because the customer will not tolerate demand reductions at unpredictable times since the

13

customer does not desire to be interrupted in the middle of a TV program or at times when the appliance is being operated. Electric light fixtures may not be suitable for integrating into the intelligent network demand control system because the demand reduction actually realized when the lights are shut off would typically not be significant enough to justify the expense of installing a CP appliance controller unit. Furthermore, if a demand reduction is required during a time when the customer is not home, or during the day time, the lights would most probably be shut off such that a demand reduction control signal would have no meaningful impact in reducing metered demand at the customer premises. Also, shutting off lights during the nighttime when the customer is home may present a safety hazard. Small appliances such as the portable, hand-held hair dryer are not particularly suitable for implementing into an intelligent network demand control system because such appliances would not provide any significant demand reduction that would justify the expenditure of a CP appliance controller unit, and the probability that the hair dryer would actually be operating at the time a demand reduction is needed would be very low. Furthermore, a customer using the hair dryer would not tolerate the shutting off of the hair dryer when a demand reduction control signal is issued by the CP energy management controller 302 (FIG. 3). Thus, one skilled in the art will appreciate that many of the appliances (not shown) residing in a customer premises are not suitable for integration into an intelligent network demand control system.

However, many appliances are suitable for integration into an intelligent network demand control system. For example, but not limited to, an air conditioning unit may be particularly well suited for implementing into an intelligent network demand control system. An air conditioning unit may likely be operating at times when the control room operators 304 (FIG. 3) instruct the CP energy management controller 302 to implement a demand reduction. If the air conditioning unit is shut off by the CP energy management controller 302 for a reasonably limited period of time, the temperature within the customer premises is not likely to increase to an unacceptable temperature. Thus, the customer would not be unduly inconvenienced by the shutting off of the air conditioning unit.

Other appliances may be similarly suitable for integration into an intelligent network demand control system. For example, if the customer premises is an industrial manufacturing facility, the manufacturing machines at the customer premises may be integrated into the intelligent demand control system. When the control room operators 304 instruct the CP energy management controller 302 to reduce demand, the manufacturing production line would be shut down, thereby resulting in a considerable reduction in system demand. Here, shutting down an entire production line may greatly inconvenience the customer. However, the electric utility or the other responsible organization may have provided special pricing incentives to induce the customer to participate in an energy control plan such that the customer voluntarily agrees to integrate the appliances into the intelligent network demand control system. One embodiment provides a pre-notification signal to the customer such that the customer has time to prepare for an impending demand reduction.

Appliance 228 includes a power switch 224 that is coupled to a power outlet 236. Power outlet 236 includes a plurality of receptacles 238 such that the appliance power cord 240 is coupled to a receptacle 238 via the plug 242. The receptacles 238 of the power outlet 236 are coupled to the

14

customer premises electrical system network 246 via connection 248. The customer premises electrical system network 246 is coupled to the meter 202 via connection 250. The meter 202 is coupled to the electric utility or the other responsible organization electric distribution system (not shown) via a connection known as a distribution service drop (not shown).

The CP appliance controller unit 220 is coupled to the power switch 224 of the appliance 228 via connection 252. When the CP energy management controller 302 (FIG. 3) issues a demand reduction control signal specifically to the transceiver 220, a broadcasted RF signal 232 is received from the transceiver network 100 (FIG. 1) such that the CP appliance controller unit 220 recognizes that the CP energy management controller 302 has instructed it to shut off the appliance 228. CP transceiver controller unit 220 then actuates the power switch 224 such that the appliance is shut off.

When the control room operators 304 (FIG. 3) determine that the reduction in system demand is no longer required, the control room operators 304 instruct the CP energy management controller 302 to terminate the demand reduction. An end of the demand reduction control signal is then broadcasted out to the CP transceiver controller unit 220 such that the power switch 224 is enabled. Depending on the nature of the appliance 228, the appliance may then automatically turn itself on. For example, if appliance 228 is an air conditioning unit, the house temperature may have increased to a point such that the thermostat (not shown) may be instructing the appliance 228 to turn on. However, the temperature in the customer premises may be such that the thermostat may not be instructing the air conditioning appliance 228 to turn on to provide cooling to the customer premises 200. Thus, when the CP appliance controller unit 220 enables the power switch 224, the air conditioning appliance 228 would not turn on because the controlling thermostat would not be instructing the air conditioning appliance 228 to be on.

Another appliance 230 residing in the customer premises 200 is illustrated as being integrated into the intelligent network demand control system. Here, a CP appliance controller unit 222 is coupled to the power switch 226 of the appliance 230 via connection 254. The appliance 230 is coupled directly to the electrical system network 246 via a connection 256.

Summarizing, the control room operators 304 (FIG. 3) determine that a reduction in system demand is desirable. The control room operators 304 instruct the CP energy management controller 302 (FIG. 3) to issue a demand reduction control signal to the CP appliance controller unit 220 and/or the CP appliance controller unit 222. Upon receiving the demand reduction control signal over the transceiver network 100 (FIG. 1), the CP appliance controller unit 220 and/or the CP appliance controller unit 222 disable the power switch 224 and/or the power switch 226 of the appliances 228 and 230, respectively. The transceiver 204 coupled to meter 202 detects the new metered demand at the meter 202, and then transmits the metered demand information through the transceiver network 100 to the CP energy management controller 302.

The CP energy management controller 302 aggregates the metered demand information received from all of the appliances, including the appliance 228 and/or appliance 230, that were instructed to be shut off in accordance with the demand reduction control signal. By comparing the metered demand information before the demand reduction with metered information after the demand reduction, an aggreg-

15

gate change in metered demand may be determined. The aggregated metered demand information is then provided to the control room operators **304** so that the control room operators **304** can determine the effectiveness of the requested reduction in system demand.

In an alternative embodiment, the transceiver **204** monitoring metered demand compares the metered demand information before the demand reduction control signal is received by transceivers **228** and/or **230** with the metered demand after the transceivers **228** and/or **230** have shut off their respectively controlled appliances. Transceiver **204** then transmits the change in metered demand back to the CP energy management controller **302** (FIG. 3). Such an alternative embodiment is desirable when transceivers monitoring the meters include processing capabilities that are readily adaptable to computing a change in metered demand and when it is desirable to transmit the change in metered demand, thereby reducing the computational requirements at the CP energy management controller **302**.

#### c. Integrating the Intelligent Network Demand Control System Into An Energy Delivery System Control Center

FIG. 3 is a block diagram illustrating selective components of an energy delivery system control center **300** in communication with the transceiver network **100**. Included as an integral component of the intelligent network demand control system is the customer premises (CP) energy management controller **302**. The CP energy management controller **302** is coupled to at least one of the previously described site controllers **110** via connection **306**. Connection **306** is coupled to connection **114** (FIGS. 1 and 2) through an intermediary communication system, described in detail below.

CP energy management controller **302** includes at least a processor **308**, a memory **310** and an interface **312**. Memory **310** includes at least a database **314** and the energy management controller logic **316**. Processor **308** is coupled to the memory **310** via connection **318** and is coupled to the interface **312** via connection **320**.

When the plurality of transceivers coupled to the customer premises meters relay metered demand information through the intelligent network demand control system, the CP energy management controller **302** receives the metered demand information and stores the received demand information into database **314**. Processor **308** executes the energy management controller logic **316** to appropriately store the received metered demand information into the database **314**. In one embodiment, database **314** employs a look up table.

The database **314** includes information of interest such as the identification code of each the transceivers coupled to the meters, the time that the metered demand was received from the meter, the location of the transceiver, and the magnitude of the metered demand. Other information of interest may also be included in the database **314**. For example, information identifying the specific customer, customers address and/or attributes of the customer's load may be included within database **314**. The nature of the appliance that is controlled by the controlling transceiver may also be included within the database **314**. One skilled in the art will appreciate that any type of information of interest may be included within the database **314**. Furthermore, information regarding attributes of transceiver stations, transceiver units and site controllers, such as identification codes and locations, may be included in database **314**.

In one embodiment, the database **314** is configured to store metered demand information over predefined periods of time. The energy management controller logic **316** is

16

configured to analyze the meter demand information such that customer load profiles may be determined for various periods of time and/or for various operating conditions. Such an embodiment is desirable when the CP energy management controller **302** is used as a predictive tool by the control room operators **304** when ascertaining reductions in demand that may be realized when the CP energy management controller **302** is requested to initiate a reduction in demand. Furthermore, such an embodiment may be employed to more accurately define a second plurality of CP appliance controller units that will be instructed to shut off their controlled appliances when the CP energy management controller **302** initiates a second round of demand reduction, described in greater detail below.

The CP energy management controller **302** is illustrated as being coupled to the control console **322**, via connection **324**. Typically, the control room operators **304** interface with the various components residing in the energy delivery system control center **300** via one or more control consoles **322**. Thus, a control room operator **304**, after determining that a reduction in system demand is desirable, instructs the CP energy management controller **302** to issue a demand reduction control system out to a predefined group of transceivers via the control console **322**.

Once the demand reduction control signal has been transmitted through the transceiver network **100** out to the plurality of transceivers controlling appliances such that the appliances are shut off, transceivers coupled to the customer premises meters relay the new metered demand information and/or the change in demand information back to the CP energy management controller **302**. The metered demand information received from the plurality of transceivers coupled to the customer premises meters are stored into the database **314**. Processor **308** then continues execution of the energy management controller logic **316** such that the aggregate metered demand change is determined. The aggregate metered demand change is then indicated to the control room operators **304** by providing the information to the control console **322**. A processing unit (not shown) residing in the control console **322** would format and display the aggregate metered demand change and/or a change in system demand to the control room operators **304** on the display screen **326**.

The energy delivery system control center **300** (FIG. 3) illustrates two additional components of interest typically residing in a conventional energy delivery system control center **300**. An electric system grid controller **328** is coupled to the control console **322** via connection **330**. Such electric system grid controllers **328** are often referred to as a system control and data acquisition (SCADA) system **328**. The SCADA system **328** is configured to enable the control room operators **304** to determine and control the status of the various electrical system transmission components (not shown) that reside in the electrical distribution system. For example, the control room operators **304** may determine whether or not a transmission line segment is energized and operating properly by reviewing information provided by the SCADA system **328** on the display screen **326**. Furthermore, the control room operators **304** typically have direct control over the status of many of the components of the electric transmission system. For example, the control room operators **304** may determine that the above-described transmission line segment is not operating properly, and may instruct control devices (not shown) to electrically decouple the transmission line segment from the electric transmission system by entering the appropriate control commands through the control console **322**.

17

Another component typically residing in an energy delivery system control center **300** is the energy management system **332**. The energy management system **332** typically provides information to the control console **322**, via connection **334**, relating to the energy supply and energy demand aspects of the system. For example, the energy management system **332** may provide information regarding the output of each of the generators under the control of the electric utility or the other responsible organization. The energy management system **332** may also provide information regarding the system purchases. Such information from the energy management system **332** includes amounts of available unused generation resources or possible amounts of energy and/or demand that may be purchased. Furthermore, the cost of obtaining the available generation and/or purchases will be provided to the control room operators **304**. Thus, the control room operators **304** may make decisions effecting the control of the electric system, and the mix of generation resources, based upon economic factors and other considerations. At certain times, the control room operators **304** may determine, based upon information provided by the SCADA system **328** and/or the energy management system **332**, that an anticipated increase in system demand cannot be met either because generation resources and/or purchased resources are not available, or because any available generation resources and/or purchased resources are too expensive to obtain. If so, the control room operators **304** may determine that it is desirable to instruct the CP management controller **302** to issue a demand reduction control signal to offset the anticipated increase in system demand. Thus, the anticipated increase in system demand may be substantially offset by the requested decrease in metered demand under the control of the intelligent network demand control system, thereby minimizing the potential and undesirable mismatch between energy demand and energy supply.

Another scenario in which it may be desirable to instruct the CP energy management controller **302** to issue a demand reduction control signal to reduce metered demand is the situation where an amount of generation capacity and/or purchase capacity is suddenly and unexpectedly lost. For example, a generating unit may suddenly and unexpectedly shut down. Or, a purchase may suddenly and unexpectedly be terminated. Or, a portion of the electric transmission system, such as a transmission line or a transformer, may fail such that energy available from the generation resources and/or the purchased resources cannot be delivered to the customer premises. In these situations, the control room operators **304** may determine that a demand reduction control signal should be issued by the CP energy management controller **302** such that metered demand is reduced out on the electrical system.

#### d. Communication Between Site Controllers and the CP Energy Management Controller

As described above with reference to FIGS. 1–3, a site controller **110** (FIGS. 1 and 2) is in communication with the interface **312** residing in the CP energy management controller **302** (FIGS. 3 and 4). FIG. 4 is a block diagram illustrating alternative communication systems employed by the intelligent network demand control system. Five exemplary site controllers **402**, **404**, **406**, **408** and **410** are illustrated as being coupled to the interface **312** residing in the CP energy management controller **302** via five conventional communication systems. These exemplary communication systems are intended to illustrate some possible communication systems through which the connections **114** (FIGS.

18

1–2) and **306** (FIG. 3) may be coupled to such that the intelligent network demand control system enables communication between the site controllers and the CP energy management controller **302**.

Site controller **402** is communicating to interface **312** via a conventional public switched telephone network (PSTN) **412**, via connections **114** and **306**. Thus, site controller **402** is configured to provide a suitable signal having metered demand information that is provided to the PSTN **412**. PSTN **412** receives the suitably configured metered demand information from the site controller **402** and relays the information to the interface **312**. Interface **312** converts the received metered demand information from the PSTN **412** and reformats the metered demand information into a suitable communication signal that is provided to processor **308** (FIG. 3) such that the metered demand information is stored in the database **314** (FIG. 3) in a manner described above.

When the CP energy management controller **302** issues a demand reduction control signal instructing preselected transceivers to shut off selected appliances, the interface **312** converts the demand reduction control signal into a suitable signal formatted for communication over the PSTN **412**. The suitably formatted demand reduction control signal is then communicated through the PSTN **412** and is transmitted to the site controller **402**. The site controller **402** then converts the received demand reduction control signal from the PSTN **412** into a suitably formatted signal for transmission out to the appliance controlling transceivers as described above.

The components (not shown) residing in the interface **312** and the site controller **402** that are configured to transmit, receive and convert signals from the PSTN **412** are well known in the art and, therefore, are not described in detail herein other than to the extent necessary to understand the operation and functioning of these components when employed as part of the interface **312** and the site controller **402**. One skilled in the art will realize that such well known components are too numerous to describe in detail herein, and that any configuration of such well known components having the above-described functionality may be implemented in the interface **312** and the site controller **402** without departing substantially from the intelligent network demand control system. Any such implementation of components configured to receive and convert communication signals from PSTN **412** are intended to be within the scope of this disclosure and to be protected by the accompanying claims.

Site controller **404** is communicating to interface **312** via the legacy utility communication system **414**, via connections **114** and **306**. Thus, site controller **404** is configured to provide a suitable signal having metered demand information that is provided to the legacy utility communication system **414**. The legacy utility communication system **414** is a well known communication system employed by the electric utility or other responsible organization for the monitoring and/or control of the electric energy distribution system.

The legacy utility communication system **414** is a conventional integrated network of communication technologies that may include microwave communication systems, conventional wire based communication systems, RF communications or fiber optics networks. Furthermore, these various communication systems are integrated into a composite communication system. Thus site controller **404** is configured to interface at convenient locations on the legacy utility communication system **414** such that the site controller **404** provides the appropriately formatted information to the legacy utility communication system.

19

For example, site controller **404** may integrate into an existing fiber optics portion of the legacy utility communication system **414**. In one embodiment, site controller **404** would be configured to interface with a suitably configured fiber optics connector to provide interconnectivity directly to the fiber optics networks, or alternatively, is configured to communicate with various communication components that are associated with the communication of optical signals over the fiber optics network. Another embodiment of site controller **404** is configured to communicate with the microwave portions, the conventional wire portions, or the RF portions of the legacy utility communication system **414**.

The legacy utility communication system **414** receives the suitably configured metered demand information from the site controller **410** and relays the information to the interface **312**. Interface **312** converts the received metered demand information from the legacy utility communication system **414** and reformats the metered demand information into a suitable communication signal that is provided to processor **308** (FIG. 3) such that the metered demand information is stored in the database **314** (FIG. 3) in a manner described above.

When the CP energy management controller **302** issues a demand reduction control signal instructing preselected transceiver to shut off selected appliances, the interface **312** converts the demand reduction control signal into a suitable signal formatted for communication over the legacy utility communication system **414**. The suitable formatted demand reduction control signal is then communicated through the legacy utility communication system **414** and is transmitted to the site controller **404**, via connections **306** and **114**. The site controller **404** then converts the received demand reduction control signal from the legacy utility communication system into a suitably formatted signal for transmission out to the appliance-controlling transceivers as described above.

The components (not shown) residing in the interface **312** and the site controller **404** that are configured to transmit, receive and convert signals from the legacy utility communication system are well known in the art and, therefore, are not described in detail herein other than to the extent necessary to understand the operation and functioning of these components when employed as part of the interface **312** and the site controller **404**. One skilled in the art will realize that such well known components are too numerous to describe in detail herein and that any configuration of such well known components having the above-described functionality may be implemented in the interface **312** and the site controller **404** without departing substantially from the intelligent network demand control system. Any such implementation of the components configured to receive and convert communication signals from the legacy utility communication system **414** are intended to be within the scope of this disclosure and to be protected by the accompanying claims.

Site controller **406** is communicating to interface **312** via a conventional digital communication system **416**, via connections **114** and **306**. Thus, site controller **406** is configured to provide a suitable signal having metered demand information that is provided to the digital communication system **416**. The digital communication system **416** is a conventional based communication system configured to communicate information in a digital format. Non-limiting examples of such digitally based communications systems include digital subscriber loops (DSL), X.25, Internet protocol, (IP), Ethernet, Integrated services digital network (ISDN) and asynchronous transfer mode (ATM). Such digital communication systems may employ a PSTN, a frame

20

relay based network and/or cable network. Furthermore, such digital communication systems may employ combinations of the above-described systems having a plurality of segments employing different technologies on each segment.

The digital communication system **416** receives the suitably configured demand information from the site controller **406** and relays the information to the interface **312**. Interface **312** converts the received metered demand information from the digital communication system **416** and reformats the metered demand information into a suitable communication signal that is provided to processor **308** (FIG. 3) such that the metered demand information is stored in the database **314** (FIG. 3) in a manner described above.

When the CP energy management controller **302** issues a demand reduction control signal instructing preselected transceivers to shut off selected appliances, the interface **312** converts the demand reduction control signal into a suitable signal formatted for communication over the digital communication system **416**. The suitably formatted demand reduction control signal is then communicated to the digital communication system **416** and is transmitted to site controller **406**, via connections **306** and **114**. The site controller **406** then converts the received demand reduction control signal from the digital communication system **416** into a suitably formatted signal for transmission out to the appliance controlling transceivers as described above.

The components (not shown) residing in the interface **312** and site controller **406** that are configured to receive and convert signals from the digital communication system **416** are well known in the art and, therefore, are not described in detail herein other than to the extent necessary to understand the operation and functioning of these components when employed as part of the interface **312** and the site controller **406**. One skilled in the art will realize that such well known components are too numerous to describe in detail herein, and that any configuration of such well known components having the above-described functionality may be implemented in the interface **312** and the site controller **406** without departing substantially from the intelligent network demand control system. Any such implementation of the components configured to receive and convert communication signals from the digital communication system are intended to be within the scope of this disclosure and to be protected by the accompanying claims.

Site controller **408** is communicating to interface **312** via a conventional radio frequency (RF) communication system having at least a first conventional transceiver **418** configured to broadcast RF signals **420** to conventional transceiver **422**. An alternative embodiment employs other mediums of broadcast signals, such as, but not limited to, microwave and/or another suitable power line carrier communication system. Thus, site controller **408** is configured to provide a suitable signal having metered demand information that is provided to the conventional transceiver **418**. The conventional transceiver **418** receives the suitably configured metered demand information from the site controller **408** and relays the information to conventional transceiver **422**. The conventional transceiver **422** relays the information to the interface **312**. Interface **312** converts the received metered demand information from the conventional transceiver **422** and reformats the metered demand information into a suitable communication signal that is provided to processor **308** (FIG. 3) such that the metered demand information is stored in the database **314** in a manner described above.

21

When the CP energy management controller **302** issues a demand reduction control signal instructing the preselected transceivers to shut off selected appliances, the interface **312** converts the demand reduction control signal into a suitable signal formatted for communication by the conventional transceivers **418** and **422**. The suitably formatted demand reduction control signal is then communicated through the conventional transceiver **422** to the conventional transceiver **418**, and then to the site controller **408**. The site controller **408** then converts the received demand reduction control signal from conventional transceiver **416** into a suitably formatted signal for transmission out to the appliance controlling transceivers as described above.

The components (not shown) residing in the interface **312** and the site controller **408** that are configured to transmit, receive and convert signals from the conventional transceivers **418** and **422** are well known in the art and, therefore, are not described in detail herein other than to the extent necessary to understand the operation and functioning of these components when employed as part of the interface **312** and the site controller **408**. One skilled in the art will realize that such well known components are too numerous to describe in detail herein, and that any configuration of such well known components having the above-described functionality may be implemented in the interface **312** and the site controller **408** without departing substantially from the intelligent network demand control system. Any such implementation of the components configured to receive and convert communication signals from the conventional transceivers **418** and **422** are intended to be within the scope of this disclosure and to be protected by the accompanying claims.

Site controller **410** is communicating to interface **312** via a conventional Internet system **424**, via connections **114** and **306**. Thus, site controller **410** is configured to provide a suitable signal having meter demand information that is provided to the Internet system **424**. Internet system **424** receives the suitably configured meter demand information from the site controller **410** and relays the information to the interface **312**. Interface **312** converts the received meter demand information from the Internet system **424** and reformats the meter demand information into a suitable communication signal that is provided to processor **308** (FIG. 3) such that the meter demand information is stored in the database **314** (FIG. 3) in a manner described above.

When the CP energy management controller **302** issues a demand reduction control signal instructing preselected transceivers to shut off selected appliances, the interface **312** converts the demand reduction control signal into a suitable signal formatted for communication over the Internet system **424**. The suitably formatted demand reduction control signal is then communicated through the Internet system **424** and is transmitted to the site controller **410**. The site controller **410** then converts the received demand reduction control signal from the Internet system **424** into a suitably formatted signal for transmission out to the appliance controlling transceivers as described above.

The components (not shown) residing in the interface **312** and the site controller **410** that are configured to transmit, receive and convert signals from the Internet system **424** are well known in the art and, therefore, are not described in detail herein other than to the extent necessary to understand the operation and functioning of those components when employed as part of the interface **312** and the site controller **410**. One skilled in the art will realize that such well known components are too numerous to describe in detail herein, and that any configuration of such well known components

22

having the above-described functionality may be implemented in the interface **312** and the site controller **410** without departing substantially from the intelligent network demand control system. Any such implementation of components configured to receive and convert communication signals from the Internet system **424** are intended to be within the scope of this disclosure and to be protected by the accompanying claims.

Other embodiments of the site controllers and the interface **312** are configured to communicate with other conventional communication networks or combination networks having a plurality of segments employing different communication technologies on each segment. For example, a site controller and an interface could be configured to communicate over satellite-based communication systems. Another example includes a combination system that employs the utility communication system **414** and the Internet system **424**. Such a combination system would include an interface device to interface the utility communication system **414** with the Internet system **424**. One skilled in the art will appreciate that there are no intended limitations with respect to the interfacing communication technology through which a site controller and an interface **312** (FIG. 3) communicate. Any such implementation of a site controller and an interface **312** configured to communicate through a conventional communication technology in accordance with the operation and functionality of the intelligent network demand control system described herein is intended to be within the scope of this disclosure and to be protected by the accompanying claims.

One embodiment of the site controller employs a plurality of standardized components, and is configured to receive an interface card. The interface card is configured to provide connectivity to the communication system that is used by the intelligent network demand control system to communicate over. Such an embodiment is particularly suited to implementing a mass produced intelligent network demand control system.

#### e. Embodiment of a Customer Premises Appliance Controller Unit

FIG. 5 is a block diagram illustrating selected components residing in the customer premises (CP) appliance controller units **220** and **222** (FIG. 2). The CP appliance controller unit **500** includes at least a processor **502**, a CP appliance unit interface **504**, a CP appliance unit transceiver **506**, an appliance controller **508**, a power unit **510**, an antenna **512** and a memory **514**. Memory **514** includes at least the CP appliance controller logic **516**, the CP appliance information **518** and the CP appliance unit identifier **520**.

Power requirements of the CP appliance controller unit **500** are provided by the power unit **510**. The power unit **510** is coupled to a convenient power source, such as the CP electrical system network (not shown) **246** (FIG. 2) or a receptacle of a power outlet (not shown), via connection **522**. Power unit **510**, if necessary, converts the voltage received over connection **522** to a suitable voltage for the components residing in the CP appliance controller unit **500**. Connection **524**, illustrated as a dashed line, is coupled as necessary (not shown) to the various components residing in the CP appliance controller unit **500**. This embodiment of the CP appliance controller unit **500** is particularly suited for application wherein the person installing the CP appliance controller unit has easy access to the customer premises electric system network **246** (FIG. 2).

The components (not shown) residing in the power unit **510** that are configured to convert and transmit power to the

components of the CP appliance controller unit **500** are well known in the art and, therefore, are not described in detail herein other than to the extent necessary to understand the operation and functioning of these components when employed as part of the CP appliance controller unit **500**. One skilled in the art will realize that such well known components are too numerous to describe in detail herein, and that any configuration of such well known power supply components may be implemented in the CP appliance controller unit **500** without departing substantially from the operation and functionality of the CP appliance controller unit **500** as described below. Any such implementation of the components configured to provide power to the components of the CP appliance controller unit **500** are intended to be within the scope of this disclosure and to be protected by the accompanying claims.

When the CP energy management controller **302** (FIG. 3) issues a demand reduction control signal, the demand reduction control signal is broadcasted out into the transceiver network **100** (FIG. 1) via a plurality of transceiver units. The demand reduction control signal, which includes identification numbers for preselected CP appliance controller units, is detected by the antenna **512**. Antenna **512** transmits the received demand reduction control signal to the CP appliance unit transceiver **506**, via connection **526**. The CP appliance unit transceiver **506** is configured to receive RF signals from antenna **512** and is further configured to transmit a suitably formatted demand reduction signal to processor **502**, via connection **528**.

When processor **502** senses an incoming demand reduction control signal, processor **502** retrieves and executes the CP appliance controller logic **516** residing in memory **514**, via connection **530**. The processor **502** also retrieves an identification number residing in the CP appliance unit identifier **520** portion of the memory **514**. Processor **502**, executes the CP appliance controller logic **516** to compare the CP appliance controller unit **500** identification number with the received demand reduction control signal. If the CP appliance controller unit **500** identification number corresponds to an identification number associated with the demand reduction control signal, processor **502** provides a shut-off control signal, via connection **532**, to the appliance controller **508**. Appliance controller **508** is configured to provide an appliance shut-off control signal, via connection **534**, to the appliance coupled to the CP appliance controller unit **500** such that the appliance is shut off.

However, if the CP appliance controller unit **500** identification number does not correspond to the identification number associated with the demand reduction control signal, processor **502** does not send a shut-off control signal to the appliance controller **508**. That is, if the identification number of the CP appliance controller unit **500** does not correspond to information associated with the demand reduction control signal, processor **502** understands that its appliance is not to be shut off.

An alternative embodiment of the CP appliance controller unit **500** employs a load block identification number that is associated with the CP appliance controller unit **500**. The load block identification number resides in the CP appliance unit identifier **520**. The load block identification number is used to associate a predefined number of CP appliance controller units into a single load block. Thus, a plurality of different CP appliance controller units can be aggregated into a plurality of different load blocks such that the demand reduction control signal may be simplified to include only the load block identification number. Thus, the CP appliance controller units shut off their respective controlled appli-

ances when a received load block identification number (residing in a detected demand reduction control signal) matches with the load block identification number of the CP appliance controller units. Such an embodiment is particularly suitable in providing control over an electric distribution system having many customer premises. Furthermore, the amount of demand reduction associated with each load block identification number can be statistically estimated. A statistically estimated demand reduction associated with each load block identification number is used in one embodiment, described in greater detail below, to select a plurality of CP appliance controller units such that the reduction in demand substantially equals a specified demand reduction from the control operators **304** (FIG. 3).

For operating convenience, one embodiment of the CP appliance controller unit **500** includes an optional CP appliance unit interface **504**. The CP appliance unit interface **504** is coupled to processor **502** via connection **536**. CP appliance interface **504** provides an interface, via connection **538**, such that a person installing and/or maintaining the CP appliance controller unit **500** may input desired information into the memory **514** of the CP appliance controller unit **500**. For example, the person may specify an identification number for the CP appliance controller unit **500**. Or, the person may specify information regarding the nature of the appliance that is controlled by the CP appliance controller unit **500**. For example, the appliance may be an air conditioning unit (not shown). This information, and other associated information, may be input into the CP appliance controller unit **500** and stored in the CP appliance information **518** portion of memory **514**. Additionally, the CP appliance unit interface **504** allows for the updating of the CP appliance controller logic **516**.

In one embodiment, the CP appliance unit transceiver **506** is configured to broadcast information out into the transceiver network **100** (FIG. 1) by generating a suitable RF communication signal for broadcast over the antenna **512**. For example, when the CP appliance controller unit **500** shuts off the appliance to which it is coupled to, the CP appliance controller unit **500** may be configured to transmit an acknowledgment signal such that the acknowledgment signal is relayed back to the CP energy management controller **302** (FIG. 3), thereby indicating to the CP energy management controller **302** that the CP appliance controller unit **500** has successfully shut off the appliance.

The CP appliance controller unit **500**, in another embodiment, is configured to include with the broadcasted RF acknowledgment signal additional information residing in the CP appliance information **518** portion of memory **514**, and/or the identification number of the CP appliance controller unit **500** residing in the CP appliance unit identifier **520** portion of memory **514**. Also, information may be broadcasted in response to an information request from the CP energy management controller **302**, may be included with a confirmation broadcast from the CP appliance controller unit **500** and/or may be transmitted on a periodic basis to the CP energy management controller **302** for maintenance purposes described below.

Appliance controller **508**, as described above, is configured to generate and transmit a control signal to the appliance that the CP appliance controller unit **500** is coupled to. Appliance controller **508** is configured to generate an appropriate control signal that is based upon the particular appliance to which the CP appliance controller unit **500** is coupled to. For example, if the CP appliance controller unit **500** is coupled to an air conditioning unit, the appliance controller **508** is configured to generate a suitable command

into the air conditioner appliance control unit such that the air conditioner will shut off upon receiving appliance shut-off control signal from the appliance controller 508. The components (not shown) residing in the appliance controller 508 that are configured to transmit an appliance shut-off control signal to the appliance are well known in the art and, therefore, are not described in detail herein other than to the extent necessary to understand the operation and functioning of the appliance controller 508 when employed as part of the CP appliance controller unit 500. One skilled in the art will realize that such well known components are too numerous to describe in detail herein, and that any configuration of such well known components having the above-described functionality may be implemented in the appliance controller 508 without departing substantially from the operation and functionality of the CP appliance controller unit 500 as described above. Any such implementation of the components of an appliance controller 508 are intended to be within the scope of this disclosure and to be protected by the accompanying claims.

FIG. 6 is a block diagram illustrating an alternative embodiment of a CP appliance controller unit 600. Components residing in the CP appliance controller unit 600 that are similar to, or identical to, the components residing in the CP appliance controller unit 500 (FIG. 5) employ the same reference number and are not described again in detail herein. That is, the CP appliance controller unit 600 is configured substantially similar to the CP appliance controller unit 500 and has substantially similar operational and functionality characteristics as the CP appliance controller unit 500. However, the CP appliance controller unit 600 is configured for conveniently controlling types of appliances that employ conventional plug-in connections for coupling to a conventional power outlet.

The CP appliance controller unit 600 includes a conventional plug 602 coupled to a connection 604 such that the plug 602 may be conveniently coupled to the receptacles 606 of the conventional power outlet 608. The receptacles 606 are coupled to the CP electrical system network 246 (see also FIG. 2), via connection 610. Connection 604 is coupled to the power unit 510 such that power is provided to the components residing within the CP appliance controller unit 600. Connection 604 is further coupled to connection 612. Connection 612 is coupled to the CP appliance controller power switch 614.

The CP appliance controller unit 600 is simply installed by coupling the plug 602 into the power outlet, and then coupling the appliance plug 616 to connection 618. Thus the appliance 620 receives power from the receptacle 606 via the connection 604, the connection 612, the CP appliance controller power switch 614, the connection 618 and the connection 622.

When the CP appliance controller unit 600 receives a demand reduction control signal instructing the CP appliance controller unit 600 to shut off the appliance 620, the processor 502, via connection 624, provides a shut-off control signal to CP appliance controller switch 614 such that electrical connectivity between connection 612 and 618 is broken. That is, when processor 502 determines that it is to shut off the appliance 620, the processor 502 actuates a switch residing in the CP appliance controller power switch 614 such that power is disconnected from appliance 620. The CP appliance controller unit 600 is particularly suited for controlling appliances such as refrigerators, freezers and other types of appliances that are configured to receive power from conventional power outlets.

The components (not shown) residing in the CP appliance controller power switch 614 that are configured to provide electrical connectivity between connections 612 and 618 are well known in the art and, therefore, are not described in detail herein other than to the extent necessary to understand the operation and functioning of these components when employed as part of the CP appliance controller unit 600. One skilled in the art will realize that such well known components are too numerous to describe in detail herein, and that any configuration of such well known components having the above-described functionality may be implemented in the CP appliance controller power switch 614 without departing substantially from the operation and functionality of the CP appliance controller unit 600. Any such implementation of the components configured to control electrical power between connection 612 and 618 are intended to be within the scope of this disclosure and to be protected by the accompanying claims.

#### f. Operation of the CP Energy Manager Controller

FIGS. 7A and 7B are flow charts illustrating a process for issuing a demand reduction control signal by the CP energy management controller 302 (FIG. 3). The flow charts of FIGS. 7A and 7B show the architecture, functionality, and operation of a possible implementation of the software for energy management controller logic 316 (FIG. 3). In this regard, each block may represent a module, segment, or portion of code, which comprises one or more executable instructions for implementing the specified logical function(s). It should also be noted that in some alternative implementations, the functions noted in the blocks may occur out of the order noted in FIGS. 7A and/or 7B, or may include additional functions, without departing significantly from the functionality of the process whereby the CP energy management controller 302 generates a demand reduction control signal. For example, two blocks shown in succession in FIGS. 7A and/or 7B may in fact be executed substantially concurrently, the blocks may sometimes be executed in the reverse order, or some of the blocks may not be executed in all instances, depending upon the functionality involved, as will be further clarified herein below. All such modifications and variations are intended to be included herein within the scope of this disclosure and to be protected by the accompanying claims.

The process starts at block 702. At block 704, processor 308 executes the energy management controller logic 316 residing in memory 310 (FIG. 3) to determine if the control room operators 304 have initiated a request for the CP energy management controller 302 to initiate a demand reduction control signal for transmission out onto the transmitter network 100 (FIG. 1). At block 706, if no demand reduction control signal (DRCS) has been received (the NO condition) the process returns back to block 704. One embodiment of the CP energy management controller 302 is configured to periodically perform a system check to determine if a demand reduction control signal has been requested by the control room operators 304. Another embodiment of the CP energy management controller 302 continually monitors for an incoming demand reduction control signal request from the operators on a real time basis. Yet another embodiment is responsive to an incoming demand reduction control signal request for the control room operators 304.

At block 706, once an incoming demand reduction control signal from the control room operators 304 has been detected (the YES condition), the process proceeds to block 708. In one embodiment, the demand reduction control

signal includes information indicating the desired magnitude of demand reduction that is to be effected by the CP energy management controller **302**. At block **708**, the CP energy management controller **302** correlates the specific demand reduction with a plurality of predefined control appliance blocks. That is, the CP energy management controller **310** compares the specified demand reduction from the control room operators **304** against a plurality of predefined controlled appliance blocks having an estimated energy demand decrease, thereby determining which particular predefined controlled appliance block best corresponds to the magnitude of the specified demand reduction.

At block **710**, the identified controlled appliance block is selected and the CP energy management controller **302** generates a shut-off control signal. The generated demand reduction control signal includes sufficient information such that all appliances associated with the selected controlled appliance block are identified. In one embodiment, the generated demand reduction control signal includes an individual listing of all identification numbers of the CP appliance controller units that are to shut off their controlled appliances. In another embodiment, a block identifier is included in the generated demand reduction control signal. The block identifier, in this embodiment, has been pre-specified into a plurality of CP appliance controller units by storing the block identifier in the CP appliance unit identifier **520** portion of memory **514** (FIGS. **5** and **6**). A block identifier signal is particularly suitable for embodiments in which a large number of appliance are associated with a single predefined control appliance block and when the generated demand reduction control signal is of a short duration.

At block **712**, the CP energy management controller **302** transmits the generated demand reduction control signal through the interface **312** over connection **306** (FIG. **3**) for transmission out to the site controller(s). As described above, the demand reduction control signal is received by the designated CP appliance controller units such that the controlled appliances are shut off.

In one embodiment, a change in demand is detected by the transceivers that are coupled to the customer premises meters. This demand change is relayed back through the transceiver network **100** (FIG. **1**) and is received by the CP energy management controller **302**. That is, at block **714**, the CP energy management controller **302** is monitoring return signals indicating the change in demand at the effected customer premises. In an alternative embodiment, additional information is provided back to the CP energy management controller **302** for analysis. For example, that CP appliance controller units that successfully implemented the specified shut off of its appliance may respond with an acknowledgment signal. Likewise, CP appliance controller units failing to complete the specified shut off of their respective appliance may indicate the failure to the CP energy management controller **302**.

At block **714**, once all of the transceivers monitoring the meters of the customer premises having CP appliance controller units designated as part of the selected controlled appliance block have responded with the metered demand change, a total change in metered demand is computed. That is, all of the individual metered demand changes are added together to determine an aggregate change in metered demand.

At block **716**, the aggregate change in metered demand is compared with the specified demand reduction from the control room operators **304**. If the aggregated metered demand change substantially equals the specified demand

change from the control room operators **304** (the YES condition), the CP energy management controller **302** determined that a successful demand reduction has been implemented and that no further action is required. That is, the process proceeds back to block **704** to await for another incoming demand reduction request from the control room operators **304**.

However, if at block **716**, the actual demand change does not equal the specified demand change (the NO condition), the process proceeds to block **718**. At block **718**, a difference is determined between the computed aggregate demand change and the specified demand change from the control room operators **304**. This difference is compared with a predetermined threshold. At block **720**, if the difference is less than or equal to the threshold (the NO condition) the process returns back to block **704** to await another incoming demand reduction signal from the control room operators **304**. That is, when the difference between the aggregate demand change and the specified demand change is less than a predefined threshold, the CP energy management controller **302** recognizes that an adequate demand reduction has been implemented. However, if the difference between the aggregate demand change and the specified change is greater than the predefined threshold (the YES condition) the process proceeds to block **722**.

At block **722** the difference between the aggregate demand change and the specified demand change is compared with the remaining predefined controlled appliance blocks. At block **724** a determination is made whether or not there is another predefined controlled appliance block that has a desirable size (estimated demand reduction) available for initiating a further demand reduction. If another predefined controlled appliance block having a desirable size is identified (the YES condition), the controlled appliance block is selected and the CP energy management controller generates a demand reduction control signal for the selected second controlled appliance block. That is, the CP energy management controller **302** determines the effectiveness of the first implemented demand reduction and if the first implemented demand reduction is insufficient to meet the request of control room operators **304**, the CP energy management controller **302** identifies a second controlled appliance block substantially equal to the deficit in the desired demand reduction and automatically initiates a demand reduction control signal for the second controlled appliance block.

In one embodiment, if no second controlled appliance block having a desirable size has been identified at block **724** (the NO condition), the process proceeds to block **728**. At block **728** the CP energy management controller **302** selects a group of CP appliance controller units that, as a group, substantially equals the deficit in the desired demand reduction. Once identified, a new controlled appliance block is defined and the CP energy management controller **302** generates a demand reduction controlled signal to the newly defined controlled appliance block. In one embodiment, database **314** (FIG. **3**) includes a list of CP appliance controller units that have not been assigned to a predefined controller appliance block. Thus, the CP energy management controller **302** merely selects from the group of unassigned CP appliance controller units to determine the newly controlled appliance block. In another embodiment, CP appliance controller units are reassigned from existing predefined controlled appliance blocks.

Once the second controlled appliance block, as determined at block **726** or block **728** is selected and the CP energy management controller **302** generates the appropriate

29

demand reduction control signal, the process proceeds back to block 704 to await the next request for a system demand reduction from the control room operators 304. The above-described process is particularly advantageous in applications where a plurality of predefined controlled appliance blocks are available, and where it is desirable to provide flexibility to the control room operators 304 in implementing a reduction in system demand. That is, the control room operators 304 may iteratively request a series of incremental reductions in energy demand, thereby providing a great degree of control over demand reductions.

In another alternative embodiment, predefined controlled appliance blocks are not used. The database 314 residing in memory 310 of the CP energy management controller 302 (FIG. 3) includes a listing of all available CP appliance controller units and the amount of demand reduction that may be expected to be realized when the CP appliance controller unit shuts off its respective appliance. Here, the control room operators 304 specify a desired reduction in system demand. The CP energy management controller selects a sufficient number of CP appliance controller units from the database 314 and issues a demand reduction control signal to instruct the selected CP appliance controller units to shut off their respective appliances. The metered demand is relayed back through the transceiver network 100 to the CP energy management controller 302. Thus, the CP energy management controller 302 can determine the effectiveness of the initial demand reduction. The CP energy management controller 302 then evaluates the actual change in metered demand with the specified reduction in demand from the control room operators 304, and selects additional CP appliance controller units from the database 314 for a second round of demand reduction. The iterative process of issuing additional demand reductions is implemented by the CP energy management controller 302 until the actual reduction in metered demand substantially equals the specified reduction in system demand from the control room operators 304.

In another embodiment, the CP energy management controller 302, after determining the aggregate reduction in metered demand from the initial demand reduction control signal, determines whether or not the aggregate reduction in metered demand exceeds the predefined reduction in system demand requested by the control room operators 304. If the aggregate reduction in metered demand exceeded the amount requested by the control room operators 304, the CP energy management controller 302 would determine the amount that the aggregate metered demand exceeded the specified demand reduction, and then selects a number of CP appliance controller units that will be instructed to turn on their respective appliances. That is, if the magnitude of the demand reduction effected by the CP energy management controller 302 exceeds the requested reduction in demand, the CP energy management controller 302 simply selects a group of CP appliance controller units and instructs those selected CP appliance controller units to re-power their respective appliances.

Another alternative embodiment is configured to automatically rotate the controlled appliance blocks in a sequential manner such that any individually controlled appliance block is not maintained in the shut off state for an unreasonable amount of time. For example, the control room operators 304 may request the CP energy management controller 302 to implement a 100 MW reduction in demand for one hour. The CP energy management controller 302 would identify four controlled appliance blocks of approximately 100 MW each, and then sequentially generate a demand reduction control signal to each one of the identified

30

four controlled appliance blocks. Any one individual controlled appliance block is shut off for only fifteen minutes. One skilled in the art will appreciate that CP energy management controller 302 can be configured to provide any degree of flexibility in rotating predefined controlled appliance blocks to prevent any one individual controlled appliance block from being shut off for an unreasonable amount of time. Another embodiment of the CP energy management controller rotates individual CP appliance controller units in accordance with information residing in database 314 as needed.

One skilled in the art will appreciate that the CP energy management controller may be configured in an infinite number of operating modes to provide the control room operators 304 any desired degree of control and flexibility. The control room operators 304 simply communicate their request to the CP energy management controller 302 through the control console 322. The CP energy management controller executes the energy management controller logic 316 to implement the specified demand reduction.

When the energy management controller logic 316 is implemented as software and stored in memory 310 (FIG. 3), one skilled in the art will appreciate that the energy management controller logic 316 can be stored on any computer-readable medium for use by or in connection with any computer and/or processor related system or method. In the context of this document, a memory 310 is a computer-readable medium that is an electronic, magnetic, optical, or other another physical device or means that contains or stores a computer and/or processor program. The energy management controller logic 316 can be embodied in any computer-readable medium for use by or in connection with an instruction execution system, apparatus, or device, such as a computer-based system, processor-containing system, or other system that can fetch the instructions from the instruction execution system, apparatus, or device and execute the instructions associated with the energy management controller logic 316. In the context of this specification, a "computer-readable medium" can be any means that can store, communicate, propagate, or transport the program associated the energy management controller logic 316 for use by or in connection with the instruction execution system, apparatus, and/or device. The computer-readable medium can be, for example, but not limited to, an electronic, magnetic, optical, electromagnetic, infrared, or semiconductor system, apparatus, device, or propagation medium. More specific examples (a nonexhaustive list) of the computer-readable medium would include the following: an electrical connection having one or more wires, a portable computer diskette, a random access memory (RAM), a read-only memory (ROM), an erasable program-mable read-only memory (EPROM, EEPROM, or Flash memory), an optical fiber, and a portable compact disc read-only memory (CDROM). Note that the computer-readable medium, could even be paper or another suitable medium upon which the program associated with the energy management controller logic 316 is printed, as the program can be electronically captured, via for instance, optical scanning of the paper or other medium, then compiled, interpreted or otherwise processed in a suitable manner if necessary, and then stored in memory 310.

g. Termination of the Demand Reduction Control Signal

When the operators have determined that the demand reduction is no longer required, the CP energy management controller 302 generates and transmits a termination command of the demand reduction control signal out to the

31

effected CP appliance controller units. That is, once the control room operators **304** have determined that a reduction in system demand is no longer required. Thus, the CP energy management controller **302** releases control of all of the effected appliances such that the effected appliances then operate in accordance with their normal operating procedures.

When the operators have determined that the reduction in system demand is no longer required, or have determined that the magnitude of the previously specified reduction in system demand may be decreased, one embodiment of the CP management controller **302** is configured to implement a "soft termination" of the demand reduction control signal. While the other embodiments described above, due to the statistical nature of appliances controlled by the CP appliance controller units, a termination of the demand reduction control signal may result in an increase in system demand exceeded the initial system demand reduction. For example, consider a hypothetical scenario wherein one hundred air conditioning units were defined in a first controlled appliance block. The demand reduction control signal would shut off each of the one hundred individually controlled air conditioning units. However, at the time of the initiation of the demand reduction control signal, only eighty of the air conditioning units may have been in actual operation due to the statistical nature of an air conditioning load which cycles on and off in accordance with a variety of parameters such as compressor pressure and/or thermostat settings. However, during the duration of time that the demand reduction control signal was in effect, the temperature inside the customer premises cooled by the one hundred air conditioning units may have all increased such that the thermostat to each air conditioning unit is requesting the air conditioning units to be on to provide cool conditioned air. Thus, when the demand reduction control signal is terminated by the CP energy management controller **302**, all one hundred of the air conditioning units would turn on. That is, only eighty air conditioning units were initially shut off, yet all one hundred air conditioning units turned on when the demand reduction control signal was terminated. Thus, in previously described embodiments, the increase in system demand may be greater than anticipated when the demand reduction control signal is terminated.

In one embodiment, the CP energy management controller **302** is configured to incrementally terminate the demand reduction control signal to the effected CP appliance controller units such that any unexpected overshoot in demand increases are avoided. For the above-described example, the CP energy management controller **302** would terminate the demand reduction control signal to only approximately eighty of the one hundred air conditioning units. The shut-off control signal to the remaining twenty air conditioning units would be postponed for some predefined period of time before those twenty air conditioning units are allowed to turn back on. That is, a soft termination of the demand reduction control signal is effected.

#### h. Operation of the CP Appliance Controller Unit

FIG. **8** is a flow chart **800** illustrating a process for receiving a demand reduction control signal by the CP appliance controller units **500** and **600** (FIGS. **5** and **6**, respectively). The flow chart of FIG. **8** shows the architecture, functionality, and operation of a possible implementation of the software for implementing the CP appliance controller logic **516** (FIG. **5**). In this regard, each block may represent a module, segment, or portion of code, which comprises one or more executable instructions for imple-

32

menting the specified logical function(s). It should also be noted that in some alternative implementations, the functions noted in the blocks may occur out of the order noted in FIG. **8** or may include additional functions without departing significantly from the functionality of the CP appliance controller units **500** and **600**. For example, two blocks shown in succession in FIG. **8** may in fact be executed substantially concurrently, the blocks may sometimes be executed in the reverse order, or some of the blocks may not be executed in all instances, depending upon the functionality involved, as will be further clarified herein below. All such modifications and variations are intended to be included herein with the scope of this disclosure and to be protected by the accompanying claims.

The process starts at block **802**. At block **804** the CP appliance controller units **500** and **600** check for the presence of a demand reduction control signal (DRCS). That is, processor **502** is monitoring signals received from the CP appliance unit transceiver **506** for the detection of demand reduction control signals on the antenna **512** (FIG. **5**).

At block **806**, a determination is made whether or not a DRCS has been received. If not (the NO condition), the process proceeds back to block **804**. If a DRCS has been received at block **806** (the YES), the process proceeds to block **808**.

At block **808** the identification code associated with the CP appliance controller unit **500** or **600** is compared with identification code information included as part of the received demand reduction control signal. That is, the demand reduction control signal will include an identification code designating which CP appliance controller units are to be actuated to shut off their respective controlled appliances. This received information is compared with the CP appliance controller unit identification code. At block **810**, a determination is made whether or not the identification code of the CP appliance controller unit **500** or **600** corresponds with the demand reduction control signal identification code. If the identification codes do not match (the NO condition), the process proceeds back to block **804**. That is, if the identification code of the received demand reduction control signal does not match with the identification code of the CP appliance controller unit the processor **502** recognizes that its controlled appliance is not to be shut off. Then the CP appliance controller unit continues to wait for another incoming demand reduction control signal which will be analyzed according to the process described above.

If at block **810** the identification code contained in the received demand reduction control signal matches with the identification code of the CP appliance controller unit **500** or **600**, (the YES condition) the process proceeds to block **812**. At block **812**, processor **502** generates a shut-off control signal such that the controlled appliance is shut off. Thus, the CP appliance controller unit **500** or **600** monitors incoming demand reduction control signals, and if the identification codes in the demand reduction control signal and the CP appliance controller match, the processor **502** recognizes that it is to shut off its respective controlled appliance.

At block **814** the CP appliance controller unit **500** or **600** awaits reception of a control signal generated by the CP energy management controller **302** to determine whether or not the shut-off control signal is to be terminated. Similar to the process described in blocks **806**, **808** and **810**, at block **814** the identification codes contained in any received termination signals are compared with the identification codes of the CP appliance controller unit **500** or **600** to determine if the termination signal is intended to be implemented by that CP appliance controller unit **500** or **600**. For conve-

nience of illustration, and because such a process is readily apparent to one skilled in the art, blocks describing this functionality in detail are not illustrated in FIG. 8 for convenience.

If at block 814 a determination is made that the received termination signal does not apply to the CP appliance controller unit 500 or 600 (the NO condition) the process proceeds to block 816. At block 816 the CP appliance controller unit 500 or 600 maintains the shut-off control signal to the controlled appliance such that the controlled appliance remains shut off. However, if the received termination signal indicates that the CP appliance controller unit 500 or 600 is to terminate the shut off, processor 502 provides a control signal such that the CP appliance controller unit 500 or 600 no longer imposes a shut-off control signal to the controlled appliance. That is, the CP appliance controller unit recognizes that the need for a demand reduction from the controlled appliance is no longer required, and therefore allows the controlled appliance to operate in its normal mode of operation.

After the appliance shut-off control signal to the controlled appliance has been terminated at block 818, the process proceeds back to block 804. Thus, the CP appliance controller unit 500 or 600 awaits their next incoming demand reduction control signal to determine if the CP appliance controller unit 500 or 600 should shut off its controlled appliance.

When the CP appliance controller logic 520 is implemented as software and stored in memory 514 (FIGS. 5 and 6), one skilled in the art will appreciate that the CP appliance controller logic 520 can be stored on any computer-readable medium for use by or in connection with any computer and/or processor related system or method. In the context of this document, a memory 514 is a computer-readable medium that is an electronic, magnetic, optical, or other another physical device or means that contains or stores a computer and/or processor program. CP appliance controller logic 520 can be embodied in any computer-readable medium for use by or in connection with an instruction execution system, apparatus, or device, such as a computer-based system, processor-containing system, or other system that can fetch the instructions from the instruction execution system, apparatus, or device and execute the instructions associated with the CP appliance controller logic 520. In the context of this specification, a "computer-readable medium" can be any means that can store, communicate, propagate, or transport the program associated the CP appliance controller logic 520 for use by or in connection with the instruction execution system, apparatus, and/or device. The computer-readable medium can be, for example, but not limited to, an electronic, magnetic, optical, electromagnetic, infrared, or semiconductor system, apparatus, device, or propagation medium. More specific examples (a nonexhaustive list) of the computer-readable medium would include the following: an electrical connection having one or more wires, a portable computer diskette, a random access memory (RAM), a read-only memory (ROM), an erasable programable read-only memory (EPROM, EEPROM, or Flash memory), an optical fiber, and a portable compact disc read-only memory (CDROM). Note that the computer-readable medium could even be paper or another suitable medium upon which the program associated with the CP appliance controller logic 520 is printed, as the program can be electronically captured, via for instance, optical scanning of the paper or other medium, then compiled, interpreted or otherwise processed in a suitable manner if necessary, and then stored in memory 514.

#### i. Transceiver Maintenance Feature

One embodiment described above employs transceivers configured to transmit information back to the CP energy management controller 302 (FIG. 3). Location information for each transceiver in a CP appliance controller unit, and/or each transceiver coupled to a meter, resides in database 314 (FIG. 3). Transceivers configured to transmit information back to the CP energy management controller 302, in one embodiment, are configured to include logic that indicates the operational status of the CP appliance controller unit and/or its associated components back to the CP energy management controller 302. The energy management controller logic 316 (FIG. 3) includes a transceiver maintenance function that evaluates received status and information from the signals transmitted by the transceivers such that the operational integrity of the CP appliance controller unit is accessed. That is, if a component in the CP appliance controller unit fails, the status information indicates failure of that component. The energy management controller logic 316 provides the appropriate indication to the control room operators 304 such that maintenance personnel are dispatched out to the CP appliance controller unit to effect a repair of the non-functioning or improperly functioning component.

One embodiment employing the above-described maintenance feature employs transceivers configured to periodically transmit status information to the CP energy management controller 302 at predefined time intervals. Another embodiment employs transceivers configured to respond to a status information request generated by the CP energy management controller 302. Here, logic residing in the energy management controller logic 316 would perform a maintenance function wherein pre-selected transceivers are requested to provide status information. Another embodiment employs transceivers configured to generate periodic status reports to the CP energy management controller 302 and are configured to respond to requests for status information from the CP energy management controller 302. In yet another embodiment, all three types of the above-described transceivers are employed to communicate status information to the CP energy management controller 302.

When the transceiver components that broadcast the status information fails, such as, but not limited to, the CP appliance unit transceiver 506, antenna 512, connection 526 and/or connection 528, the failure is detected by a loss of signal. Thus, in an embodiment employing a transceiver that is to provide an acknowledgement signal, or provide a status signal in response to a status information request, or is to provide periodic status information reports, the failure of the transceiver to respond or provide information at scheduled times and/or in response to a status inquiry indicates a component failure.

Summarizing, the above-described embodiment includes a maintenance functionality such that the operational status of the transceivers residing in the transceiver network 100 (FIG. 1) are monitored to ensure continuous operational functionality. Other components of the above-described communication network, such as the transceiver units and the site controllers, may be also monitored. Thus, a detected failure in a transceiver or a transceiver component may be quickly detected such that maintenance personnel are dispatched to repair the failed components or transceiver. This embodiment is particularly advantageous in providing an intelligent network demand control system having a high degree of operational reliability and integrity.

## j. Defining Transceiver Communication Paths

For convenience describing the operation and functionality of the transceiver network 100 (FIG. 1), a simplified description of the communication paths employed by the plurality of transceivers is described above. In one embodiment, all transceivers employed in the transceiver network have both capability to receive broadcasted signals and to transmit broadcast signals. However, many of the transceivers have a limited transmit signal range as the strength of the broadcasted signal is relatively low. This embodiment is particularly suited in transceiver network 100 configurations employing a large number of transceivers located in close proximity to other transceivers.

The communication path that a transceiver employs for broadcasting signals is predefined. For example, transceiver 122 in FIG. 1 was described above as transmitting, and receiving, broadcast signals with transceiver unit 106 over the path defined by signal 128, 142 and 144. That is, when the transceiver unit 106 transmits a demand reduction control signal to transceiver 122, transceiver stations 138 and 134 are configured to relay the signal to transceiver 122. Here, if the transceiver station 158 detects the demand reduction control signal to transceiver 122, transceiver station 158 simply ignores the detected signal and does not relay the signal.

In one embodiment, transmission paths for all receivers are predetermined by the CP energy management controller 302 (FIG. 3). Path information is broadcasted out to all components of the transceiver network 100, transceiver stations, transceiver units and site controllers. Each component then configures itself to react only to those signals for which it is part of the predefined path. Thus, when the transceiver unit 106 transmits a demand reduction control signal to transceiver 122, transceiver unit 170 recognizes that it is not part of the path to transceiver 122, and simply takes no action.

In one embodiment, the communication paths are defined by using the identification codes associated with each transceiver, and identification codes assigned to the transceiver stations, transceiver units and site controllers. For example, if site controller 110 is defined by the identification code 110, transceiver unit 106 is defined by the identification code 106, transceiver station 138 is defined by the identification code 138, transceiver station 134 is defined by the identification code 134, and transceiver 122 is defined by the identification code 122, the path between the site controller 110 and transceiver 122 is simply defined by a code such as 110.106.138.134.122 (where each number corresponds to the component identification code). One skilled in the art will appreciate that other suitable codes are easily defined.

Such a system is described in detail in the commonly assigned patent entitled "MULTI-FUNCTION GENERAL PURPOSE TRANSCEIVER," filed Mar. 18, 1999, and accorded Ser. No. 6,233,327B1, issued on May 15, 2001 and incorporated herein by reference in its entirety.

In one embodiment of the intelligent network demand control system, failure of a transceiver or a transceiver component is detected in a manner described above. When such a failure is detected, communications with other transceivers may be disrupted if the failed transceiver or transceiver component is in the communication path of other transceivers. In such a situation, upon the detection of the failed transceiver or transceiver component, the CP energy management controller redefines communication paths for affected transceivers, and transmits the redefined paths out to the transceivers, transceiver stations, transceiver units and site controllers such that the paths are redefined. For

example, transceiver station 134 (FIG. 1) may fail. Thus, transceivers 122, 124 and 126 (FIG. 1) will not be in communication with the CP energy management controller 302 (FIG. 3). The communication path for transceiver 122 would then be redefined such that transceiver 122 is communicating with transceiver 152 (assuming that transceiver 152 is sufficiently close to transceiver 122 to detect signals broadcasted from transceiver 122). Thus, transceiver 122 would be in communication with the transceiver unit 106 (FIG. 1) through a newly defined path indicated by the signals 174, 162, 168 and 144 (FIG. 1).

Similarly, the communication path for transceiver 124 would then be redefined such that transceiver 124 is communicating with transceiver 122 (assuming that transceiver 122 is sufficiently close to transceiver 124 to detect signals broadcasted from transceiver 124). Thus, transceiver 124 would be in communication with the transceiver unit 106 through a newly defined path indicated by the signals 176, 174, 162, 168 and 144 (FIG. 1).

Similarly, the communication path for transceiver 126 would then be redefined such that transceiver 126 is communicating with transceiver 124 (assuming that transceiver 124 is sufficiently close to transceiver 126 to detect signals broadcasted from transceiver 126). Thus, transceiver 126 would be in communication with the transceiver unit 106 through a newly defined path indicated by the signals 178, 176, 174, 162, 168 and 144 (FIG. 1).

One skilled in the art will appreciate that the possible communication paths in a transceiver network 100 are nearly limitless, and that such communication paths are easily redefined by the CP energy management controller 302. The above described examples are intended to illustrate some of the alternative redefined communication paths to explain the operation and functionality of the maintenance feature of one embodiment of the intelligent network demand control system.

## k. Alternative Embodiments of the Intelligent Network Demand Control System

For convenience of describing the operation and functionality of the CP energy management controller 302 (FIG. 3), an integral part of the intelligent network demand control system, the CP energy management controller 302 was illustrated as a stand-alone unit. The CP energy management controller 302, in an alternative embodiment, may be implemented as an integral component of an energy management system and/or a SCADA system without departing substantially from the operation and functionality of the intelligent network demand control system.

Furthermore, the components illustrated as residing in the CP energy management controller 302 may reside in alternative convenient locations outside of the CP energy management controller 302 without adversely affecting the operation and functionality of the intelligent network demand control system. Such components may even be integrated with other existing components residing in the energy delivery system control center, thereby minimizing the cost of implementing an intelligent network demand control system.

For example, the database 314 residing in the memory 310 (FIG. 3) may be implemented in a memory unit residing in an alternative location, such as the control console 322, the energy management system 332, or the SCADA system 328 (FIG. 3). Thus, metered demand information provided by the intelligent network demand control system could simply be transferred to a database residing in the alternative location.

Similarly, the energy management controller logic **316** (FIG. **3**) could reside in a convenient alternative location and be executed by a different processor that resides in a convenient alternative location. Also, the interface **312** may be implemented as a stand-alone interface unit residing in a convenient location. For example, interface **312** may be implemented as a stand-alone PC, a network PC, a dedicated intra-network interface or the like that performs the functionality of receiving information through a communication network from the site controller **110** (FIGS. **1** and **2**).

For convenience of describing the operation and functionality of the CP energy management controller **302** (FIG. **3**), an integral part of the intelligent network demand control system, the CP energy management controller **302** was illustrated as a stand-alone unit residing within the energy delivery system control center. Another embodiment of the CP energy management controller **302** resides in an alternative convenient location outside of the energy delivery system control center. In such an embodiment, connection **324** may be a connection of suitable length to provide connectivity between processor **308** and the control console **322**. In other embodiments, connection **324** may include a plurality of components that provides connectivity over a special purpose network or an existing, general purpose network. For example, the CP energy management controller **302** could be in communication with the control center energy delivery system over any one of the communication systems described above and illustrated in FIG. **4**. Such a configuration is easily implemented using appropriate interface components. Such interface components residing in a CP energy management controller **302** and an energy delivery system that are configured to transmit, receive and convert signals are well known in the art and, therefore, are not described in detail herein other than to the extent necessary to understand the operation and functioning of these components when employed as part of the intelligent network demand control system that is remote from the energy delivery system control center. One skilled in the art will realize that such well known components are too numerous to describe in detail herein, and that any configuration of such well known components having the above-described functionality may be implemented without departing substantially from the intelligent network demand control system.

An alternative embodiment of the CP appliance controller unit, configured substantially in accordance with the CP appliance controller unit **500** (FIG. **5**), is further configured to provide a plurality of output control signals to a plurality of appliances to which the CP appliance controller unit **500** is coupled to. For example, CP appliance controller unit may be coupled to three appliances. The appliance controller would provide three output connections, or the single output connection would be coupled to all three appliances, such that a single shut-off signal generated by the processor would concurrently shut off all three appliances. Alternatively, the plurality of appliances coupled to the CP appliance controller unit, in another embodiment, each have an associated unique identification code such that a single CP appliance controller unit may determine which individual appliances are to be shut off when the demand reduction control signal is received from the CP energy management controller **302** (FIG. **3**). Here, the demand reduction control signal received from the CP energy management controller **302** contains appliance identification codes such that the CP appliance controller unit determines which appliances to shut off. Furthermore, an embodiment of a CP appliance controller unit may be easily configured substantially in

accordance with the CP appliance controller unit **600** (FIG. **6**) by simply providing a plurality of receptacles to which the controlled appliances will be plugged into to receive electrical power through the CP appliance controller unit. Such an embodiment having a plurality of receptacles may be configured to shut all appliances off as a group, or may be configured to select individual appliances for shutting off in the manner described above.

The embodiment of the intelligent network demand control system was described herein to include a plurality of transceiver units configured to communicate based upon a predefined communication path specified by the CP energy management controller **302**. An alternative embodiment is configured to communicate with other special purpose systems that employ compatible transceivers. For example, a system for monitoring emergency, alarm, climate, or other conditions in a defined territory is disclosed in the co-pending commonly assigned non-provisional application entitled "SYSTEM FOR MONITORING CONDITIONS IN A RESIDENTIAL LIVING COMMUNITY," filed Mar. 18, 1999, and accorded Ser. No. 09/271,517, incorporated herein by reference in its entirety. The above application describes a computerized system for monitoring emergency, alarm, climate and/or other conditions in a defined territory using a network of transceivers communicating back to a remote facility via a plurality of repeaters and a central system (such as a site controller). The plurality of transceivers configured for monitoring emergency, alarm, climate and/or other conditions in a defined territory are integrated with a plurality of transceivers for controlling customer premises appliances, thereby reducing overall facility, maintenance and installation costs by employing common units. For example, a transceiver controlling an air conditioning unit, a transceiver monitoring metered demand and a transceiver monitoring an alarm (in accordance with the Ser. No. 09/271,517 Application) may be integrated to communicate through same transceiver stations, transceiver units and/or site controllers. The integrated system would simply recognize the device that is monitored or controlled by any particular transceiver and appropriately route communications to and/or from that transceiver to the appropriate remote facility. One skilled in the art will appreciate that an intelligent network demand control system described herein is interpretable into any other special purpose system or a multipurpose system based upon a network of similarly configured transceivers that communicate through common components.

An alternative embodiment of the CP appliance controller unit, configured substantially in accordance with the CP appliance controller unit **500** (FIG. **5**), is further configured to provide a thermostat setting control signal to a thermostat controlling an air conditioning unit, heating unit, heat pump unit or the like. The thermostat control signal adjusts the setting of the thermostat such that the unit controlled by the thermostat shuts off when a demand reduction control signal is received by the CP appliance controller unit. In one embodiment, the thermostat control signal resets the thermostat's temperature setting to a predefined value. Such an embodiment may be particularly useful in shutting off a controlled unit while maintaining a temperature threshold at which the thermostat may override a shut-off signal provided by the CP appliance controller unit. For example, during the summer cooling season, the predefined thermostat setting that the thermostat is reset to when a demand reduction control signal is received may be selected to be 85 degrees Fahrenheit (° F.). When the demand reduction control signal is received by the CP appliance controller unit,

a thermostat setting control signal adjusts the thermostat setting to 85° F. Should the ambient temperature monitored by the thermostat exceed 85° F., then the demand reduction control signal is overridden such that the air conditioning unit is activated so that ambient temperature does not substantially exceed 85° F. During the winter heating season, the predefined thermostat setting may be selected to be, for example, 70 degrees Fahrenheit (° F.). When the demand reduction control signal is received by the CP appliance controller unit, a thermostat setting control signal adjusts the thermostat setting to 70° F. Should the ambient temperature monitored by the thermostat decrease below 70° F., then the demand reduction control signal is overridden such that the heating unit is activated so that ambient temperature does not substantially decrease below 70° F.

FIG. 9 is a block diagram illustrating an alternative embodiment of a gateway appliance controller unit 900. Components residing in the gateway appliance controller unit 900 that are similar to, or identical to, the components residing in the CP appliance controller unit 500 (FIG. 5) employ the same reference number and are not described again in detail herein. That is, the gateway appliance controller unit 900 is configured substantially similar to the CP appliance controller unit 500 and has substantially similar operational and functionality characteristics as the CP appliance controller unit 500. However, the gateway appliance controller unit 900 is configured for conveniently controlling a plurality of appliances that are coupled to a single gateway appliance controller unit 900.

The gateway appliance controller unit 900 includes a plurality of appliance controllers 902, 904 and 906. Processor 502 provides a shut-off control signal to the appliance controllers 902, 904 and 906, via connection 908. For convenience of illustration, connection 908 is shown as a single connection from processor 502 that branches out to the plurality of appliance controllers 902, 904 and 906. However, processor 502 could employ individual connections to each of the plurality of appliance controllers 902, 904 and 906. Appliance controllers 902, 904 and 906 are coupled to at least one appliance via connections 910, 912 and 914, respectively. The appliance controllers 902, 904 and 906 operate substantially in accordance with the above-described appliance controller 508 (FIG. 5). Alternatively, one or more of the plurality of appliance controllers 902, 904 and/or 906 may be configured to operate substantially in accordance with the CP appliance controller power switch 614 (FIG. 6). Furthermore, one or more of the plurality of appliance controller units 902, 904 and/or 906 may be configured to control a plurality of appliances, directly and/or indirectly.

When a demand reduction control signal is received by the gateway appliance controller unit 900, information is provided such that processor 502 determines which of the plurality of appliance controllers 902, 904 and/or 906 are to be operated such that their controlled appliance is shut off. For example, a demand reduction control signal may indicate that only appliance controllers 902 and 906 are to shut off their respective appliances. Thus, a later received incoming demand reduction control signal could include information such that appliance controller 904 is to shut off its controlled appliance. Alternatively, a received demand reduction control signal could specify any combination of identification information to identify selected appliance controllers that are to be instructed to shut off their controlled appliances. Similarly, incoming control signals requesting a

termination of the demand reduction control signal can be tailored to selectively be addressed to specified appliance controllers.

The gateway appliance controller unit 900 is particularly advantageous in applications where it is desirable to control a plurality of appliances from a single centralized location. For example, the gateway appliance controller unit 900 may be particularly applicable for controlling a single factory or a portion of a single factory, such as an assembly line.

FIG. 10 is a block diagram illustrating an alternative embodiment of a CP appliance controller unit 1000 configured to provide notification that the CP appliance controller unit 1000 has received and implemented a demand reduction control signal to its controlled appliances. Components residing in the CP appliance controller unit 1000 that are similar to, or identical to, the components residing in the CP appliance controller unit 500 (FIG. 5) employ the same reference number and are not described again in detail herein. That is, the CP appliance controller unit 1000 is configured substantially similar to the CP appliance controller unit 500 and has substantially similar operational and functionality characteristics as the CP appliance controller unit 500. However, the CP appliance controller unit 1000 is configured to notify the effected customer that the CP appliance controller unit 1000 has operated to shut off its controlled appliance.

When a demand reduction control signal is received by the CP appliance controller unit 1000 and a shut-off control signal is generated such that the appliance controller 508 shuts off its controlled appliance, processor 502 generates a notification signal. In one embodiment, the notification signal is provided to the notification interface 1002, via connection 1004. Notification interface 1002 is configured to provide a suitably formatted notification communication signal over connection 1006 such that the customer is notified that the controlled appliance has been shut off. One non-limiting example of the notification interface 1002 is an embodiment that provides a suitably formatted notification communication signal that is transmitted through a conventional public switched telephone network. Another non-limiting example of an embodiment of the notification interface 1002 is an embodiment that provides a suitably formatted notification communication signal in a digital format or the like that is transmitted to a PC or other similar processor. For example, such a notification communication signal could be provided directly to a PC or be provided into a networked system such as an Intranet or an Internet network. Yet another non-limiting example of an embodiment of the notification interface 1002 transmits a conventional radio frequency (RF) signal to a transceiver to provide the notification to the customer. A non-limiting example of a transceiver configured to receive a broadcasted notification communication signal is a conventional pager or a special purpose pager.

One skilled in the art will appreciate that the notification interface 1002 may be configured to provide a suitable notification communication signal to any conventional communication system. Therefore, the specific components (not shown) residing in the notification interface 1002 that are configured to transmit a suitable notification communication signal to any particular conventional communication system are well known in the art and, therefore, are not described in detail herein other than to the extent necessary to understand the operation and functioning of the notification interface 1002 when employed as part of the CP appliance controller unit 1000. One skilled in the art will realize that such well known components are too numerous to describe in detail

herein, and that any configuration of such well known components having the above-described functionality may be implemented in the notification interface **1002** without departing substantially from the operation and functionality of the CP appliance controller unit **1000** as described above. Any such implementation of the components of a notification interface **1002** are intended to be within the scope of this disclosure and to be protected by the accompanying claims.

Alternatively, processor **502** may provide a notification signal that actuates a light **1008**. For example, the notification signal may simply be a suitable voltage over connection **1010** such that the light **1008** turns on and emits light **1012** that is visible to a customer. That is, when the customer sees the light **1012** emanating from the light **1008**, the customer realizes that the controlled appliance has been shut off. Alternatively, a suitable audio signal may be provided over connection **1010** such that a conventional speaker (not shown) provides an audible notification signal to the customer.

For convenience of illustration, and for explaining the operation and functionality of the CP appliance controller unit **1000**, the notification interface **1002** and the light **1008** were described as residing together in the CP appliance controller unit **1000**. Alternative embodiments may employ a single notification device. For example, the CP appliance controller unit **1000** may be limited to the light **1008**. Such an embodiment is particularly advantageous in providing lower cost CP appliance controller units **1000**.

An alternative embodiment of the CP appliance controller unit **1000** is configured to receive a pre-notification demand reduction control signal that is generated by the CP energy management controller **302** (FIG. 3). The pre-notification demand reduction control signal is generated in a similar manner as the demand reduction control signal. However, the pre-notification demand reduction control signal does not include instructions directing the receiving CP appliance controller unit **1000** to shut off its controlled appliance. Such an embodiment is particularly advantageous when the control room operators **304** (FIG. 3) realize that at a known future time a demand reduction will be requested of the CP appliance controller units.

For example, the control room operators **304** may be notified that a generation unit will be coming off-line or that a purchase of energy from another entity will be terminated in approximately one hour. The control room operators **304** then request the CP energy management controller **302** (FIG. 3) to generate and transmit out onto the network a pre-notification demand reduction control signal to selected CP appliance controller units **1000**. Such a pre-notification demand reduction control signal could be provided at any convenient time such that when received by the effected customer, the effected customer becomes aware of the impending demand reduction control signal that will shut off the customer's appliance. Such an embodiment may be particularly advantageous to customers that desire pre-notification to prepare for the shutting down of controlled appliances. For example, a large petroleum processing facility may be operating a plurality of appliances that process crude oil into a variety of refined products. The pre-notification demand reduction control signal provides such a customer sufficient time to perform operations such that when the demand reduction control signal is received, the shutting off of controlled appliances will have a minimal negative impact to the customer.

# 1. Embodiments of the Intelligent Network Demand Control System Controlling Generation

Customers as defined above, include residential customers (individuals or families living in homes, apartments, condominiums or the like), retail customers (such as retail stores, shopping malls, small businesses or the like) and wholesale customers (such as manufacturers, producers or the like). Each of these types of customers may have generator units at their customer premises. Although the characteristics of residential customers, retail customers and wholesale customers are very different from each other, the intelligent network demand control system is designed to apply equally well to any customer class. For convenience, the above-described generators residing at a customer premises is interchangeably referred to herein in as a generator, as a stand-by generator and/or as an appliance.

For example, but not limited to, a retail customer such as, but not limited to, a hospital, may have a stand-by generator that maintains critical loads during times when electric service is not provided by the electric utility or other responsible organization. Similarly, a residential customer may have a stand-by generator at their residence, particularly if the residence is located in a remote part of the electric utility or other responsible organization electric service system where power outages occur frequently. Similarly, a whole sale customer such as, but not limited to, a petroleum refinery, may have a stand-by generator to maintain critical processes during times when service is not provided by the electric utility or other responsible organization. If the customer premises encompasses a facility having a large load served by stand-by generation, a plurality of stand-by generators may be installed at the customer premises.

FIG. 11 is a block diagram illustrating generator units **1102** at a customer premises **1104** controlled by transceivers **1106** according to the present invention. Each generator unit **1102** has a generator **1108**, a generator controller **1110** and generator metering **1112**. For convenience, the transceiver **1106** is illustrated and described as a simplified transceiver device. As described herein, one embodiment of the transceiver **1106** is implemented as a CP appliance controller **500** (FIG. 5).

Generator unit **1108** is coupled to the customer premises electrical system network **246** (see also FIG. 2) via connection **1114**. The customer premises electrical system network **246** is coupled to the meter **202** via connection **250**. The meter **202**, described above, is coupled to the electric utility or the other responsible organization energy delivery system (not shown). As described above, transceiver **204** communicates information detected by the meter **202** back to the CP Energy management controller **302** (FIG. 3). The customer premises electrical system network **246** may also be coupled to customer loads. For example, but not limited to, appliances **228** and **230** described above and controlled by the intelligent network demand control system, may be coupled to the customer premises electrical system network **246**.

Generator controller **1110** provides control signals controlling the operation of generator **1108**, via connection **1116**. Control of generator **1108** by the generator controller **1110** is known in the art of controlling power generators, and is not described herein in detail. Generation metering **1112** meters the output of generator **1108**, via connection **1118**. Metering of generator **1108** by generator metering **1112** is known in the art of metering power generators, and is not described herein in detail. Furthermore, the generator metering **1112** is in communication with, or may be incorporated as part of, the generation controller **1110** such that the

generator **1108** is operated in a controlled and stable manner, as is known in the art of controlling power generators.

The control room operators **304** (FIG. 3) are responsible for operation of the energy delivery system that is controlled by the electric utility or other responsible organization. When the control room operators **304** determine that a reduction in system demand is required, as described above, the control room operators **304** instruct the CP energy management controller **302** to implement a demand reduction. In an embodiment controlling one or more generation units **1102**, the CP energy management controller **302**, in a manner described below, provides a demand reduction control signal to the site controller **110** specifying selected generation units **1102** (a load block) that are to be brought on line, thereby effecting a demand reduction by adding an increment of generation into the electric system. For convenience, the phrase “on-line” refers to a generator **1108** that is powered such that the generator rotor is rotated at synchronous speed and such that the generator terminals are synchronously connected into the electric system network. Generator **1108** outputs electrical power when torque is applied to the generator rotor. For convenience, the phrase “starting the generator” or an equivalent phrase refers to the process of bringing the generator **1108** on line and continuous the application of torque to the generator rotor such that the generator **1108** outputs electrical power while the generator **1108** is on line.

An increase in generation, realized by bringing on line one of more stand-by generators in accordance with the present invention, is tantamount to a demand reduction in that the power resources that must supplied by the electric utility or other responsible organization are reduced. Accordingly, electrical power output of the generator rotor is referred to herein for convenience as a reduction in demand.

When the CP energy management controller **302** (FIG. 3) issues a demand reduction control signal over the above-described transceiver network **100** to the transceiver **1106**, a broadcasted RF signal **1120** is received by transceiver **1106**. The transceiver **1106**, identified by a unique alpha-numeric identification code, as described above, recognizes that the corresponding generator is to be brought on line since the received demand reduction control signal includes its identification code. Furthermore, the transceiver **1106** may be configured to recognize an identification signal associated with a generation block comprised of a plurality of generator units, and/or a combination load/generation block (having both load components that are shut off and generation components that are brought on line). Accordingly, a suitable control signal is communicated from transceiver **1106**, via connection **1122**, to generation controller **1110** such that the generator **1108** is brought on line.

In another embodiment, transceiver **1106** is coupled to generator metering **1112**, via connection **1124**, such that the detected electrical generation output from generator **1108** is communicated back to the CP energy management controller **302**. Accordingly, the actual amount of generation output from generator **1108** can be considered by the CP energy management controller **302** in determining if the desired amount of demand reduction has been realized. That is, the amount of generation output, when viewed as an amount of demand reduction, can be incorporated into a coordinated energy demand reduction plan that incorporates the above-described load appliances and generation units **1102**. Also, the actual amount of generation output from generator **1108** can be communicated to the control room operators **304**, as described above.

In yet another embodiment, transceiver **204** communicates the demand change detected by meter **202** back to the CP energy management controller **302**. Such a detected demand change will include the net effect of the output from generator **1108**, including any electrical losses between the generator **1108** and the meter **202**. Accordingly, the net generation output from generator **1108** can be considered by the CP energy management controller **302** in determining if the desired amount of demand reduction has been realized. That is, the amount of net generation output, when viewed as an amount of demand reduction, can be incorporated into a coordinated energy demand reduction plan that incorporates the above-described load appliances and generation units **1102**.

A plurality of generation units **1102** may be integrated into and controlled by the intelligent network demand control system of the present invention. Individual generation units **1102** may be considered as a load block by themselves. Or, a plurality of generation units **1102** may be grouped together into a load block. Furthermore, one or more generation units **1102** may be grouped with one or more of the above-described controlled appliances into a load block. Accordingly, a generation unit **1102** may be integrated into an intelligent network demand control system and controlled in accordance with any one of the above-described methods of effecting a demand reduction by the CP energy management controller **302**.

Returning to FIG. 5, one embodiment of a CP appliance controller unit **500** configured to start up a customer's generator when a demand reduction control signal is received by the a CP appliance controller unit **500** is illustrated. Accordingly, the CP appliance unit interface **504** is configured to communicate a suitable control signal, also referred to herein for convenience as an on-line control signal, to the generator controller **1110** such that the generator **1108** is brought on line (started). In the case of many simplified stand-by generator controllers **1110** that are configured to automatically start up and control the operation of the generator **1108**, the CP appliance interface unit **504** need only provide the appropriate on-line control signal recognized by the generator controller **1110**.

In other embodiments, the generator controller **1110** may be configured to receive more complex control signals. For example, but not limited to, generator power output, generator reactive output and/or generator terminal voltage may be specifiable parameters recognized by the generator controller **1110**. Accordingly, the CP appliance controller unit **500** may be configured to receive a specification of selected ones of such parameters from the CP energy management controller **302**, and may be configured to communicate the appropriate control signals for the selected parameters from the CP appliance interface unit **504**.

In another embodiment, the CP appliance controller unit controls a plurality of generators. Accordingly, the CP appliance interface unit **504** is configured to generate a plurality of suitable on-line control signals.

In yet another embodiment, the CP appliance interface unit **504** is configured to additionally couple to the generator metering **1112**. Accordingly, generator output information detected by the generation metering **1112** may be communicated to the CP energy management controller **302**. Alternatively, a separate CP appliance controller unit **500** may be coupled to the generator metering unit **1112** so that generator output information is communicated to the CP energy management controller **302**.

FIGS. 12A and 12B are flow charts illustrating a process for issuing a demand reduction control signal by the CP

45

energy management controller **302** (FIG. 3) to a generation unit **1102**. The flow charts of FIGS. **12A** and **12B** show the architecture, functionality, and operation of a possible implementation of the software for energy management controller logic **316** (FIG. 3). In this regard, each block may represent a module, segment, or portion of code, which comprises one or more executable instructions for implementing the specified logical function(s). It should also be noted that in some alternative implementations, the functions noted in the blocks may occur out of the order noted in FIGS. **12A** and/or **12B**, or may include additional functions, without departing significantly from the functionality of the process whereby the CP energy management controller **302** generates a demand reduction control signal. For example, two blocks shown in succession in FIGS. **12A** and/or **12B** may in fact be executed substantially concurrently, the blocks may sometimes be executed in the reverse order, or some of the blocks may not be executed in all instances, depending upon the functionality involved, as will be further clarified herein below. All such modifications and variations are intended to be included herein within the scope of this disclosure and to be protected by the accompanying claims.

The process starts at block **1202**. At block **1204**, processor **308** executes the energy management controller logic **316** residing in memory **310** (FIG. 3) to determine if the control room operators **304** have initiated a request for the CP energy management controller **302** to initiate a demand reduction control signal for transmission out onto the transceiver network **100** (FIG. 1). At block **1206**, if no demand reduction control signal (DRCS) has been received (the NO condition) the process returns back to block **1204**. One embodiment of the CP energy management controller **302** is configured to periodically perform a system check to determine if a demand reduction control signal has been requested by the control room operators **304**. Another embodiment of the CP energy management controller **302** continually monitors for an incoming demand reduction control signal request from the operators on a real time basis. Yet another embodiment is responsive to an incoming demand reduction control signal request for the control room operators **304**.

At block **1206**, once an incoming demand reduction control signal from the control room operators **304** has been detected (the YES condition), the process proceeds to block **1208**. In one embodiment, the demand reduction control signal includes information indicating the desired magnitude of demand reduction (corresponding to an amount of generation that is to be brought on line) that is to be effected by the CP energy management controller **302**. At block **1208**, the CP energy management controller **302** correlates the specific demand reduction with a plurality of predefined generation blocks. That is, the CP energy management controller **310** compares the specified demand reduction from the control room operators **304** against a plurality of predefined generation blocks having an estimated energy demand decrease, thereby determining which particular predefined generation block best corresponds to the magnitude of the specified demand reduction.

At block **1210**, the identified generation block is selected and the CP energy management controller **302** generates a demand reduction control signal. The generated demand reduction control signal includes sufficient information such that all generators associated with the selected generation block are identified. In one embodiment, the generated demand reduction control signal includes an individual listing of all identification numbers of the CP appliance

46

controller units that are to turn on their controlled generators. In another embodiment, a block identifier is included in the generated demand reduction control signal. The block identifier, in this embodiment, has been pre-specified into a plurality of CP appliance controller units by storing the block identifier in the CP appliance unit identifier **520** portion of memory **514** (FIG. 5). A block identifier signal is particularly suitable for embodiments in which a plurality of generators are associated with a single predefined generation block.

At block **1212**, the CP energy management controller **302** transmits the generated demand reduction control signal through the interface **312** over connection **306** (FIG. 3) for transmission out to the site controller(s). As described above, the demand reduction control signal is received by the designated CP appliance controller units such that the controlled generator is brought on line.

In one embodiment, a change in demand is detected by the transceivers that are coupled to the customer premises meters and/or the generator **1108**. This demand change is relayed back through the transceiver network **100** (FIG. 1) and is received by the CP energy management controller **302**. That is, at block **1214**, the CP energy management controller **302** is monitoring return signals indicating the change in demand at the effected customer premises. In an alternative embodiment, additional information is provided back to the CP energy management controller **302** for analysis. For example, the CP appliance controller units that successfully brought on line their specified generator may respond with an acknowledgment signal. Likewise, CP appliance controller units failing to complete bringing on line of their respective generator may indicate the failure to the CP energy management controller **302**.

At block **1214**, once all of the transceivers monitoring the meters of the customer premises and/or generators **1108** having CP appliance controller units designated as part of the selected generation block have responded with the metered demand change, a total change in metered demand is computed. That is, all of the individual metered demand changes are added together to determine an aggregate change in metered demand.

At block **1216**, the aggregate change in metered demand is compared with the specified demand reduction from the control room operators **304**. If the aggregated metered demand change substantially equals the specified demand change from the control room operators **304** (the YES condition), the CP energy management controller **302** determined that a successful demand reduction has been implemented and that no further action is required. That is, the process proceeds back to block **1204** to await for another incoming demand reduction request from the control room operators **304**.

However, if at block **1216**, the actual demand change does not equal the specified demand change (the NO condition), the process proceeds to block **1218**. At block **1218**, a difference is determined between the computed aggregate demand change and the specified demand change from the control room operators **304**. This difference is compared with a predetermined threshold. At block **1220**, if the difference is less than or equal to the threshold (the NO condition) the process returns back to block **1204** to await another incoming demand reduction signal from the control room operators **304**. That is, when the difference between the aggregate demand change and the specified demand change is less than a predefined threshold, the CP energy management controller **302** recognizes that an adequate demand reduction has been implemented. However, if the

difference between the aggregate demand change and the specified change is greater than the predefined threshold (the YES condition) the process proceeds to block 1222.

At block 1222 the difference between the aggregate demand change and the specified demand change is compared with the remaining predefined generation blocks. At block 1224 a determination is made whether or not there is another predefined generation block that has a desirable size (estimated demand reduction) available for initiating a further demand reduction. If another predefined generation block having a desirable size is identified (the YES condition), the generation block is selected and the CP energy management controller generates a demand reduction control signal for the selected second generation block. That is, the CP energy management controller 302 determines the effectiveness of the first implemented demand reduction and if the first implemented demand reduction is insufficient to meet the request of control room operators 304, the CP energy management controller 302 identifies a second generation block substantially equal to the deficit in the desired demand reduction and automatically initiates a demand reduction control signal for the second generation block.

In one embodiment, if no second generation block having a desirable size has been identified at block 1224 (the NO condition), the process proceeds to block 1228. At block 1228 the CP energy management controller 302 selects a groups of CP appliance controller units that, as a group, substantially equals the deficit in the desired demand reduction. Once identified, a new generation block is defined and the CP energy management controller 302 generates a demand reduction controlled signal to the newly defined generation block. In one embodiment, database 314 (FIG. 3) includes a list of CP appliance controller units that have not been assigned to a predefined generation block. Thus, the CP energy management controller 302 merely selects from the group of unassigned CP appliance controller units to determine the newly generation block. In another embodiment, CP appliance controller units are reassigned from existing predefined generation blocks.

Once the second generation block, as determined at block 1226 or block 1228 is selected and the CP energy management controller 302 generates the appropriate demand reduction control signal, the process proceeds back to block 1204 to await the next request for a system demand reduction from the control room operators 304. The above-described process is particularly advantageous in applications where a plurality of predefined generation blocks are available, and where it is desirable to provide flexibility to the control room operators 304 in implementing a reduction in system demand. That is, the control room operators 304 may iteratively request a series of incremental reductions in energy demand, thereby providing a great degree of control over demand reductions.

In another alternative embodiment, predefined generation blocks are not used. The database 314 residing in memory 310 of the CP energy management controller 302 (FIG. 3) includes a listing of all available CP appliance controller units and the amount of demand reduction that may be expected to be realized when the CP appliance controller unit brings on line its respective generator(s). Here, the control room operators 304 specify a desired reduction in system demand. The CP energy management controller selects a sufficient number of CP appliance controller units from the database 314 and issues a demand reduction control signal to instruct the selected CP appliance controller units to bring on line its respective generator. The metered demand is relayed back through the transceiver network 100

to the CP energy management controller 302. Thus, the CP energy management controller 302 can determine the effectiveness of the initial demand reduction. The CP energy management controller 302 then evaluates the actual change in metered demand with the specified reduction in demand from the control room operators 304, and selects additional CP appliance controller units from the data base 314 for a second round of demand reduction. The iterative process of issuing additional demand reductions is implemented by the CP energy management controller 302 until the actual reduction in metered demand substantially equals the specified reduction in system demand from the control room operators 304.

In another embodiment, the CP energy management controller 302, after determining the aggregate reduction in metered demand from the initial demand reduction control signal, determines whether or not the aggregate reduction in metered demand exceed the predefined reduction in system demand requested by the control room operators 304. If the aggregate reduction in metered demand exceeded the amount requested by the control room operators 304, the CP energy management controller 302 would determine the amount that the aggregate metered demand exceeded the specified demand reduction, and then selects a number of CP appliance controller units that will be instructed to shut off their respective generators, or alternatively, the amount of generation that the on-line generators will be reduced by. That is, if the magnitude of the demand reduction effected by the CP energy management controller 302 exceeds the requested reduction in demand, the CP energy management controller 302 simply selects a group of CP appliance controller units and instructs those selected CP appliance controller units to shut off and/or adjust the generation output of their respective generators.

In another embodiment, the process of FIGS. 12A and 12B, whereby generation is controlled, is combined with the process of FIGS. 7A and 7B, whereby controlled appliance loads are shut off in coordination with bringing controlled generators on line. Accordingly, the CP energy management controller may selectively turn on generation and/or shut off loads to achieve a desired reduction in demand. Such an embodiment provides a great degree of operational flexibility and control to the control room operators 304.

FIG. 13 is a flow chart illustrating a process for receiving a demand reduction control signal by a CP appliance controller unit 500 (FIG. 5) such that a controlled generator 1108 is brought on line. The flow chart of FIG. 13 shows the architecture, functionality, and operation of a possible implementation of the software for implementing the CP appliance controller logic 516 (FIG. 5). In this regard, each block may represent a module, segment, or portion of code, which comprises one or more executable instructions for implementing the specified logical function(s). It should also be noted that in some alternative implementations, the functions noted in the blocks may occur out of the order noted in FIG. 13 or may include additional functions without departing significantly from the functionality of the CP appliance controller unit 500. For example, two blocks shown in succession in FIG. 13 may in fact be executed substantially concurrently, the blocks may sometimes be executed in the reverse order, or some of the blocks may not be executed in all instances, depending upon the functionality involved, as will be further clarified herein below. All such modifications and variations are intended to be included herein with the scope of this disclosure and to be protected by the accompanying claims.

49

The process starts at block 1302. At block 1304 the CP appliance controller unit 500 checks for the presence of a demand reduction control signal (DRCS). That is, processor 502 is monitoring signals received from the CP appliance unit transceiver 506 for the detection of demand reduction control signals on the antenna 512 (FIG. 5).

At block 1306, a determination is made whether or not a demand reduction control signal has been received. If not (the NO condition), the process proceeds back to block 1304. If a demand reduction control signal has been received at block 1306 (the YES), the process proceeds to block 1308.

At block 1308 the identification code associated with the CP appliance controller unit 500 is compared with identification code information included as part of the received demand reduction control signal. That is, the demand reduction control signal will include an identification code designating which CP appliance controller units are to be actuated to bring on line their respective controlled generators. This received information is compared with the CP appliance controller unit identification code. At block 1310, a determination is made whether or not the identification code of CP appliance controller unit 500 corresponds with the demand reduction control signal identification code. If the identification code does not match (the NO condition), the process proceeds back to block 1304. That is, if the identification code of the received demand reduction control signal does not match with the identification code of the CP appliance controller unit 500, the processor 502 recognizes that its controlled generator is not to be started. Then the CP appliance controller unit 500 continues to wait for another incoming demand reduction control signal which will be analyzed according to the process described above.

If at block 1310 the identification code contained in the received demand reduction control signal matches with the identification code of the CP appliance controller unit 500, (the YES condition) the process proceeds to block 1312. At block 1312, processor 502 generates an on-line control signal such that the controlled generator is brought on line. Thus, the CP appliance controller unit 500 monitors incoming demand reduction control signals, and if the identification codes in the demand reduction control signal and the CP appliance controller match, the processor 502 recognizes that it is to start its respective controlled generator.

At block 1314 the CP appliance controller unit 500 awaits reception of a control signal generated by the CP energy management controller 302 to determine whether or not the on-line control signal is to be terminated. Similar to the process described in blocks 1306, 1308 and 1310, at block 1314 the identification codes contained in any received termination signals are compared with the identification codes of the CP appliance controller unit 500 to determine if the termination signal is intended to be implemented by that CP appliance controller unit 500. For convenience of illustration, and because such a process is readily apparent to one skilled in the art, blocks describing this functionality in detail are not illustrated in FIG. 8 for convenience.

If at block 1314 a determination is made that the received termination signal does not apply to the CP appliance controller unit 500 (the NO condition) the process proceeds to block 1316. At block 1316 the CP appliance controller unit 500 maintains the on-line control signal to the controlled generator such that the controlled generator continues to generate power. However, if the received termination signal indicates that the CP appliance controller unit 500 is to shut off the controlled generator, processor 502 provides a control signal such that the CP appliance controller unit 500 no longer imposes a on-line control signal to the

50

controlled generator. That is, the CP appliance controller unit 500 recognizes that the need for a demand reduction from the controlled generator is no longer required, and therefore allows the controlled generator to operate in its normal mode of operation (presumably in an off-line condition).

After the generator on-line control signal to the controlled generator has been terminated at block 1318, the processors proceed back to block 1304. Thus, the CP appliance controller unit 500 awaits their next incoming demand reduction control signal to determine if the CP appliance controller unit 500 should bring its controlled generator back on line.

An alternative embodiment of the CP appliance controller unit 500 is configured to receive a pre-notification demand reduction control signal that is generated by the CP energy management controller 302 (FIG. 3). The pre-notification demand reduction control signal is generated in a similar manner as the demand reduction control signal. However, the pre-notification demand reduction control signal does not include instructions directing the receiving CP appliance controller unit 1000 to start its controlled generator. Such an embodiment is particularly advantageous when the control room operators 304 (FIG. 3) realize that at a known future time a demand reduction will be requested of the CP appliance controller units.

Such a pre-notification demand reduction control signal could be provided at any convenient time such that when received by the effected customer, the effected customer becomes aware of the impending demand reduction control signal that will shut off the customer's appliance. Such an embodiment may be particularly advantageous to customers that desire pre-notification to prepare for the starting of controlled generators. The pre-notification demand reduction control signal provides such a customer sufficient time to perform operations such that when the demand reduction control signal is received, the starting of controlled generators will have a minimal negative impact to the customer.

It should be emphasized that the above-described embodiments of the present invention, particularly, any "preferred" embodiments, are merely possible examples of implementations, merely set forth for a clear understanding of the principles of the invention. Many variations and modifications may be made to the above-described embodiment(s) of the invention without departing substantially from the spirit and principles of the invention. All such modifications and variations are intended to be included herein within the scope of this disclosure and the present invention and protected by the following claims.

Now, therefore, the following is claimed:

1. A method for controlling demand in an energy delivery system, the method comprising the steps of:
  - generating a demand reduction control signal by an energy management controller;
  - transmitting the demand reduction control signal from the energy management controller to at least one of a plurality of appliance control units, each one of the plurality of appliance control units coupled to at least one generator;
  - starting the generator coupled to the appliance control unit in response to receiving the demand reduction control signal;
  - metering a first change in demand at a plurality of meters configured to detect an output from the generators;
  - determining a first aggregate change in demand, the first aggregate change in demand equaling a sum of the metered first change in demand at the plurality of meters; and

51

iteratively generating an additional demand reduction control signal and metering an actual demand reduction until the metered actual demand reduction substantially equals a specified reduction in system demand.

2. The method of claim 1, further comprising the steps of: assigning a unique identification code to each one of the plurality of appliance control units;

selecting a plurality of identification codes such that selected ones of the plurality of appliance control units are selected; and

receiving the generated demand reduction control signal by the selected ones of the plurality of appliance control units and performing the step of starting each one of the generators coupled to the selected ones of the plurality of appliance control units.

3. The method of claim 1, further comprising the step of communicating the demand reduction control signal from the energy management controller to the at least one of a plurality of appliance control units through a communication network.

4. The method of claim 3, wherein the communication network is a public switched telephone network.

5. The method of claim 3, wherein the communication network is a utility legacy communication system.

6. The method of claim 3, wherein the communication network is a digital communication system.

7. The method of claim 3, wherein the communication network is a radio frequency (RF) communication system.

8. The method of claim 3, wherein the communication network is an Internet network.

9. The method of claim 1, further comprising the step of receiving by the energy management controller a demand reduction instruction from operators of the energy delivery system such that the step of generating the demand reduction control signal is made in response to the received demand reduction instruction.

10. The method of claim 1, further comprising the steps of:

receiving a demand reduction instruction;  
determining a difference between the determined first aggregate change in demand with the demand reduction instruction;

generating a second demand reduction control signal;  
transmitting the second demand reduction control signal to a second plurality of appliance control units, each one of the second plurality of appliance control units coupled to at least one generator;

starting at least one of the generators coupled to the second plurality of appliance control units in response to receiving the second demand reduction control signal;

metering a second change in demand at the plurality of meters; and determining a second aggregate change in demand, the second aggregate change in demand equaling the sum of the metered second change in demand at the plurality of meters.

11. The method of claim 10, further comprising the step of selecting a number of appliance control units to be members of the second plurality of appliance control units such that the second aggregate change in demand substantially equals the difference between the first aggregate change in demand and the demand reduction instruction.

12. The method of claim 1, further comprising the steps of:

selecting at least one of the plurality of appliance control units; and transmitting the generated demand reduction control signal to the selected appliance control units

52

such that the generators coupled to the selected appliance control units are started.

13. The method of claim 1, further comprising the steps of:

generating a terminating signal; and  
transmitting the terminating signal from the energy management controller to the plurality of appliance control units such that the demand reduction control signal is ended.

14. The method of claim 13, further comprising the steps of:

metering a second change in demand at each one of the plurality of meters after the demand reduction control signal is ended;

determining a second aggregate change in demand, the second aggregate change in demand equaling the sum of the metered second change in demand at each one of the plurality of meters; and

comparing the second aggregate change of demand with an aggregate metered demand determined before the demand reduction control signal is ended.

15. The method of claim 1, further comprising the steps of:

selecting a number of appliance control units to be members of a second plurality of appliance control units;

generating a second demand reduction control signal;

transmitting the second demand reduction control signal to the second plurality of appliance control units, each one of the second plurality of appliance control units coupled to at least one generator; and

starting each one of the generators coupled to the second plurality of appliance control units in response to receiving the second demand reduction control signal such that a third aggregate change in demand substantially equals a difference between the second aggregate change of demand and the aggregate metered demand determined before the demand reduction control signal is ended.

16. The method of claim 1, further comprising the steps of:

assigning a unique identification code to each one of the plurality of appliance control units;

selecting a plurality of identification codes to define a first demand reduction load block; and

associating the selected identification codes with the generated demand reduction control signal such that when the demand reduction control signal is transmitted, only the appliance control units having their identification code selected perform the step of starting at least one of the generators coupled to the appliance control unit.

17. The method of claim 16, further comprising the steps of:

defining a generation block identification code such that the generation block identification code corresponds to the selected unique identification codes; and

associating the generation block identification code with the generated demand reduction control signal such that when the demand reduction control signal is transmitted, only the appliance control units having their identification code associated with the load block identification code perform the step of starting each one of the generators coupled to the appliance control unit.

53

18. The method of claim 17, further comprising the steps of:

defining a plurality of generation block identification codes, each one of the generation block identification codes corresponding to the selected unique group of identification codes, such that a plurality of demand reduction generation blocks are defined;

estimating an aggregate amount of demand reduction for each of the plurality of demand reduction generation blocks;

receiving a demand reduction instruction specifying a desired aggregate demand reduction; and

selecting at least one of the plurality of demand reduction generation blocks such that the estimated amount of demand reduction for the selected demand reduction generation blocks approximately equals the desired aggregate demand reduction specified by the demand reduction control signal.

19. The method of claim 18, further comprising the steps of:

metering an aggregate change in demand after the demand reduction control signal is transmitted to the plurality of appliance control units;

determining a difference between the aggregate metered change in demand and the specified desired aggregate demand reduction;

selecting at least one second demand reduction generation block such that the sum of the estimated aggregate amount of demand reduction associated with the selected second demand reduction load block substantially equals the determined difference; and generating a second demand reduction control signal such that when the second demand reduction control signal is transmitted, only the appliance control units having their identification code associated with the second demand reduction generation block perform the step of starting each one of the generators coupled to the appliance control unit.

20. The method of claim 1, further comprising the step of transmitting to the energy management controller an acknowledgment signal from each one of the appliance control units that successfully started its respective generator.

21. The method of claim 1, further comprising the steps of:

generating a notification control signal by the energy management controller, the generation of the notification control signal occurring before the step of generating the demand reduction control signal by a predefined amount of time;

transmitting the notification control signal from the energy management controller to at least one of the plurality of appliance control units;

receiving the notification control signal by the at least one appliance control unit; and

generating a notification communication signal by the at least one appliance control unit such that a customer understands that the step of starting the generator will occur at a future time, the future time substantially corresponding to the predefined amount of time.

22. A system for controlling demand in an energy delivery system, comprising:

means for generating a demand reduction control signal by an energy management controller;

means for transmitting the demand reduction control signal from the energy management controller to at

54

least one of a plurality of appliance control units, each one of the plurality of appliance control units coupled to at least one generator;

means for generating an on-line control signal in response to receiving the demand reduction control signal;

means for starting the generator coupled to the appliance control unit in response to receiving the on-line control signal;

means for metering a first change in an output of the generators;

means for determining a first aggregate change in demand, the first aggregate change in demand equaling a sum of the metered first change in output of the plurality of generators; and

means for iteratively generating an additional demand reduction control signal and metering an actual demand reduction until the metered actual demand reduction substantially equals a specified reduction in system demand.

23. The system of claim 22, further comprising:

means for assigning a unique identification code to each one of the plurality of appliance control units; and

means for selecting a plurality of identification codes such that selected ones of the plurality of appliance control units are selected.

24. The system of claim 22, further comprising means for communicating the demand reduction control signal from the energy management controller to the at least one of a plurality of appliance control units through a communication network.

25. The system of claim 22, further comprising means for receiving by the energy management controller a demand reduction instruction from operators of an energy delivery system such that the step of generating the demand reduction control signal is made in response to the received demand reduction instruction.

26. The system of claim 22, further comprising:

means for receiving a demand reduction instruction, the demand reduction instruction having at least a requested amount of demand reduction;

means for determining a difference between the determined first aggregate change in demand with the requested amount of demand reduction;

means for generating a second demand reduction control signal; means for transmitting the second demand reduction control signal to a second plurality of appliance control units, each one of the second plurality of appliance control units coupled to at least one generator;

means for starting at least one of the generators coupled to the second plurality of appliance control units in response to receiving the second demand reduction control signal;

means for metering a second change in demand corresponding to the output of the generators; and

means for determining a second aggregate change in demand, the second aggregate change in demand equaling the sum of the metered second change in demand.

27. The system of claim 26, further comprising means for selecting a number of appliance control units to be members of the second plurality of appliance control units such that the second aggregate change in demand substantially equals the difference between the first aggregate change in demand and the demand reduction instruction selecting the number of appliance control units to be members of the second plurality of appliance control units such that the second aggregate change in demand substantially equals the differ-

55

ence between the first aggregate change in demand and the requested amount of demand reduction.

28. The system of claim 22, further comprising:

means for selecting at least one of the plurality of appliance control units; and

means for transmitting the generated demand reduction control signal to the selected appliance control units such that the generators coupled to the selected appliance control units are started.

29. The system of claim 22, further comprising:

means for generating a terminating signal; and

means for transmitting the terminating signal from the energy management controller to the plurality of appliance control units such that the on-line control signal is ended.

30. The system of claim 22, further comprising:

means for assigning a unique identification code to each one of the plurality of appliance control units;

means for selecting a plurality of identification codes to define a first generation block; and means for associating the selected identification codes with the generated demand reduction control signal such that when the demand reduction control signal is transmitted, only the appliance control units having their identification code selected perform the step of starting at least one of the generators coupled to the appliance control unit.

31. The system of claim 30, further comprising:

means for defining a generation identification code such that the generation block identification code corresponds to the selected unique identification codes; and means for associating the generation block identification code with the generated demand reduction control signal such that when the demand reduction control signal is transmitted, only the appliance control units having their identification code associated with the generation block identification code perform the step of starting each one of the generators coupled to the appliance control unit.

32. The system of claim 31, further comprising:

means for defining a plurality of generation block identification codes, each one of the generation block identification codes corresponding to the selected unique group of identification codes, such that a plurality of generation load blocks are defined;

means for estimating an aggregate amount of demand reduction for each of the plurality of generation load blocks;

means for receiving a demand reduction instruction specifying a desired aggregate demand reduction; and

means for selecting at least one of the plurality of generation load blocks such that the estimated aggregate amount of demand reduction for the selected generation load blocks approximately equals the desired aggregate demand reduction specified by the demand reduction control signal.

33. The system of claim 32, further comprising:

means for metering an aggregate change in demand after the demand reduction control signal is transmitted to the plurality of appliance control units;

means for determining a difference between the aggregate metered change in demand and the specified desired aggregate demand reduction;

means for selecting at least one second generation load block such that the sum of the estimated aggregate amount of demand reduction associated with the selected second generation load block substantially equals the determined difference; and

56

means for generating a second demand reduction control signal such that when the second demand reduction control signal is transmitted, only the appliance control units having their identification code associated with the second generation load block perform the step of starting each one of the generators coupled to the appliance control unit.

34. The system of claim 22, further comprising means for transmitting to the energy management controller an acknowledgment signal from each one of the appliance control units that successfully started its respective generator.

35. A computer-readable medium having a program for controlling demand in an energy delivery system, the program comprising logic configured to perform the steps of:

generating a demand reduction control signal by an energy management controller so that the demand reduction control signal is transmitted from the energy management controller to at least one of a plurality of appliance control units, each one of the plurality of appliance control units coupled to at least one generator and configured to start the generator coupled to the appliance control unit in response to receiving the demand reduction control signal, and so that a first metered change in demand is received from a plurality of meters, each one of the meters coupled to the generator;

determining a first aggregate change in demand, the first aggregate change in demand equaling a sum of the metered first change in demand at the plurality of meters; and

iteratively generating an additional demand reduction control signal and metering an actual demand reduction until the metered actual demand reduction substantially equals a specified reduction in system demand.

36. The computer-readable medium of claim 35, the program further comprising logic configured to perform the steps of receiving a demand reduction instruction from operators of the energy delivery system such that the step of generating the demand reduction control signal is made in response to the received demand reduction instruction.

37. The computer readable medium of claim 35, the program further comprising logic configured to perform the steps of:

determining a difference between the determined first aggregate change in demand with a requested amount of demand reduction;

generating a second demand reduction control signal so that the second demand reduction control signal is transmitted to a second plurality of appliance control units, each one of the second plurality of appliance control units coupled to at least one generator so that the generators coupled to the second plurality of appliance control units are started in response to receiving the second demand reduction control signal, and so that a second metered change in demand is received from a plurality of second meters, each one of the second meters coupled to started generators; and determining a second aggregate change in demand, the second aggregate change in demand equaling the sum of the metered second change in demand at the plurality of second meters.

38. The computer-readable medium of claim 37, the program further comprising logic configured to perform the steps of selecting a number of appliance control units to be members of the second plurality of appliance control units such that the second aggregate change in demand substan-

57

tially equals the difference between the first aggregate change in demand and the requested amount of demand reduction.

**39.** The computer-readable medium of claim **35**, the program further comprising logic configured to perform the steps of:

assigning a unique identification code to each one of the plurality of appliance control units;

selecting a plurality of identification codes to define a first generation load block; and

associating the selected identification codes with the generated demand reduction control signal such that when the demand reduction control signal is transmitted, only the appliance control units having their identification code selected start the generator coupled to the appliance control unit.

**40.** The computer-readable medium of claim **39**, the program further comprising logic configured to perform the steps of:

defining a generation block identification code such that the generation block identification code corresponds to the selected unique identification codes; and

associating the generation block identification code with the generated demand reduction control signal such that

58

when the demand reduction control signal is transmitted, only the appliance control units having their identification code associated with the generation block identification code start the generator coupled to the appliance control unit.

**41.** The computer-readable medium of claim **40**, the program further comprising logic configured to perform the steps of:

defining a plurality of generation block identification codes, each one of the generation block identification codes corresponding to the selected unique group of identification codes, such that a plurality of demand reduction generation blocks are defined;

estimating an aggregate amount of demand reduction for each of the plurality of generation load blocks; and

selecting at least one of the plurality of generation blocks such that an estimated amount of demand reduction for the selected demand reduction generation blocks approximately equals a desired aggregate demand reduction specified by the demand reduction control signal.

\* \* \* \* \*