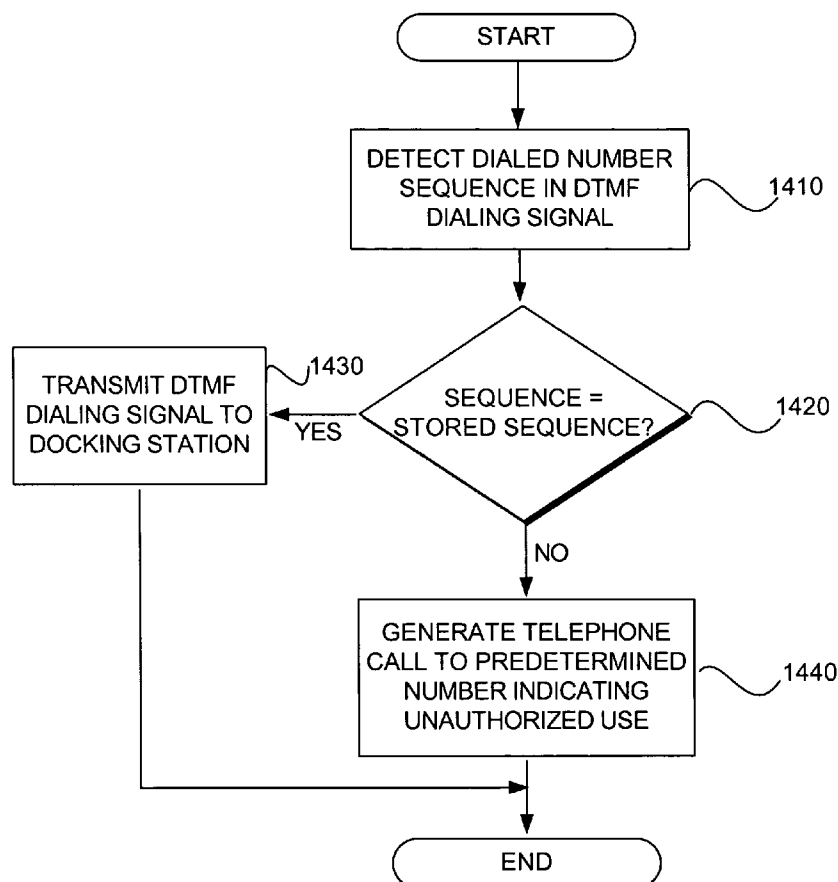




US 20050025299A1

(19) **United States**(12) **Patent Application Publication****Tischer et al.**(10) **Pub. No.: US 2005/0025299 A1**(43) **Pub. Date:****Feb. 3, 2005**(54) **SYSTEMS AND METHODS FOR
RESTRICTING THE USE AND MOVEMENT
OF TELEPHONY DEVICES**(75) Inventors: **Steven Tischer**, Atlanta, GA (US);
Kevin Kleinfelter, Atlanta, GA (US)Correspondence Address:
Merchant & Gould P.C.
P.O. Box 2903
Minneapolis, MN 55402-0903 (US)(73) Assignee: **BellSouth Intellectual Property Corpo-
ration**(21) Appl. No.: **10/929,711**(22) Filed: **Aug. 30, 2004****Related U.S. Application Data**(63) Continuation-in-part of application No. 10/195,197,
filed on Jul. 15, 2002.**Publication Classification**(51) **Int. Cl.⁷** **H04M 1/66; H04M 1/68;**
H04M 1/00; H04M 3/16(52) **U.S. Cl.** **379/199; 455/410; 379/200**(57) **ABSTRACT**

Systems and methods for restricting the use and movement of plain old telephone system (POTS) devices and cellular telephones are presented. In a broad sense, the system includes an interface configured to only allow telephone calls to a limited set of telephone numbers or area codes. The interface may be configured to detect a telephone number during a call attempt and compare the number to a stored sequence list of allowed telephone numbers or area codes. If the detected number matches one of the allowed telephone numbers or area codes, the call attempt is allowed to continue. However, if the detected number does not match a number in the stored sequence list, the call attempt is blocked by the interface. The interface may also be configured to restrict the movement of a cellular telephone based on received location data indicating a current position of the cellular telephone. An alert, such as an audible alarm, is automatically generated when the location of the cellular telephone is greater than a predetermined distance from the interface to deter unauthorized movement. The interface may also be configured with a physical lock to prevent the cellular telephone from being removed from a docking station. The interface may also be configured to generate a locking signal to inhibit the use of the cellular telephone after it has been moved greater than the predetermined distance.



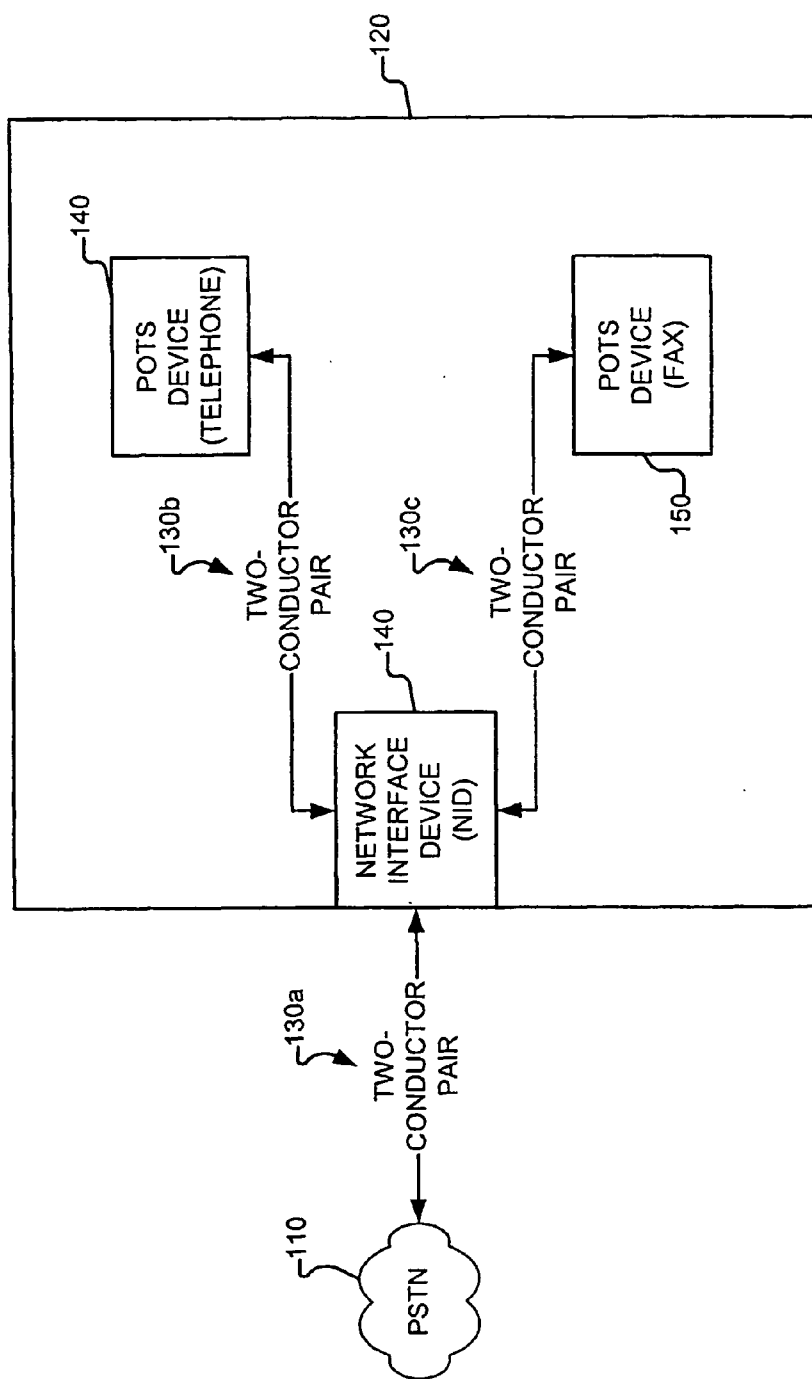


FIG. 1
(PRIOR ART)

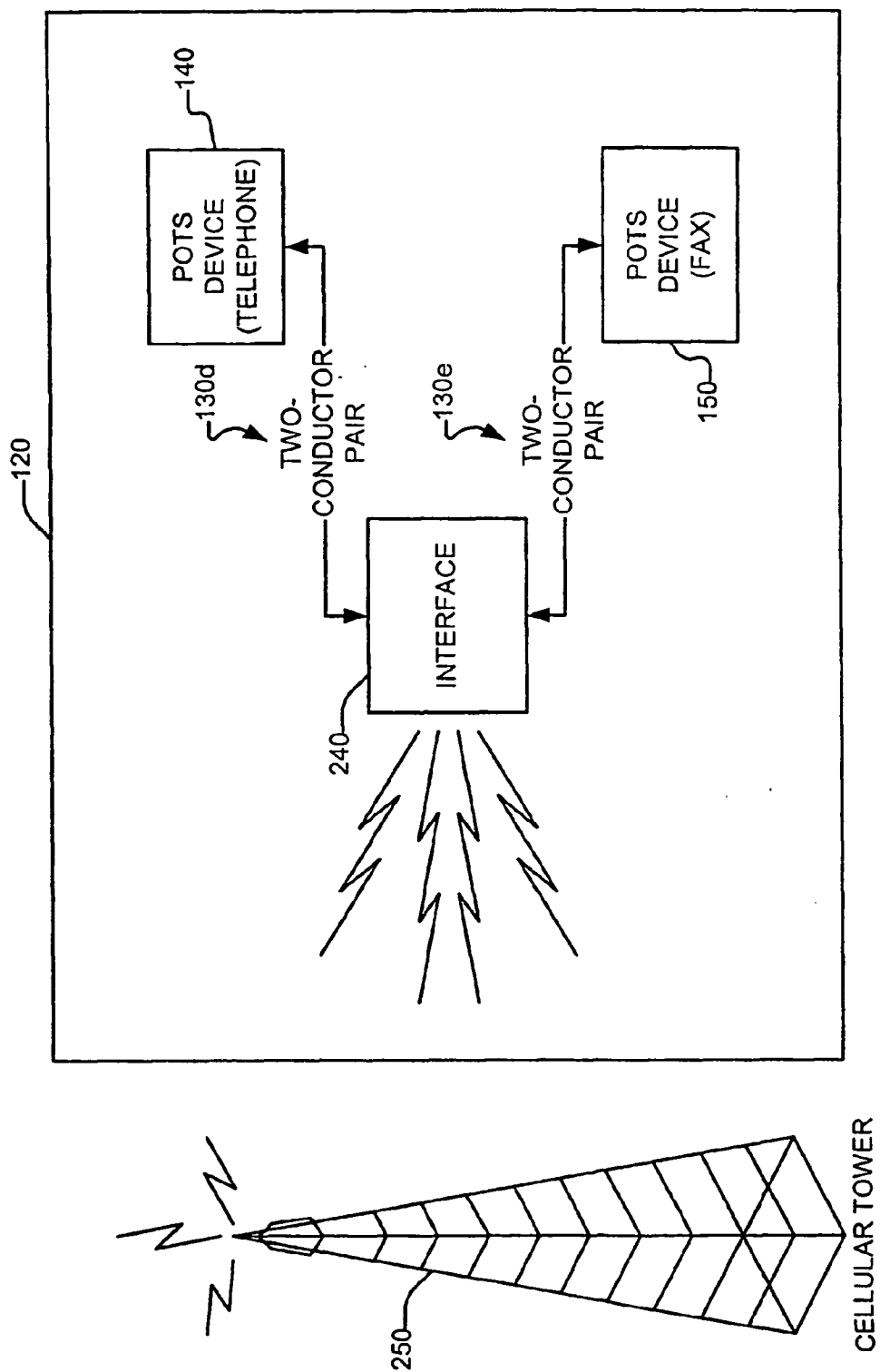


FIG. 2

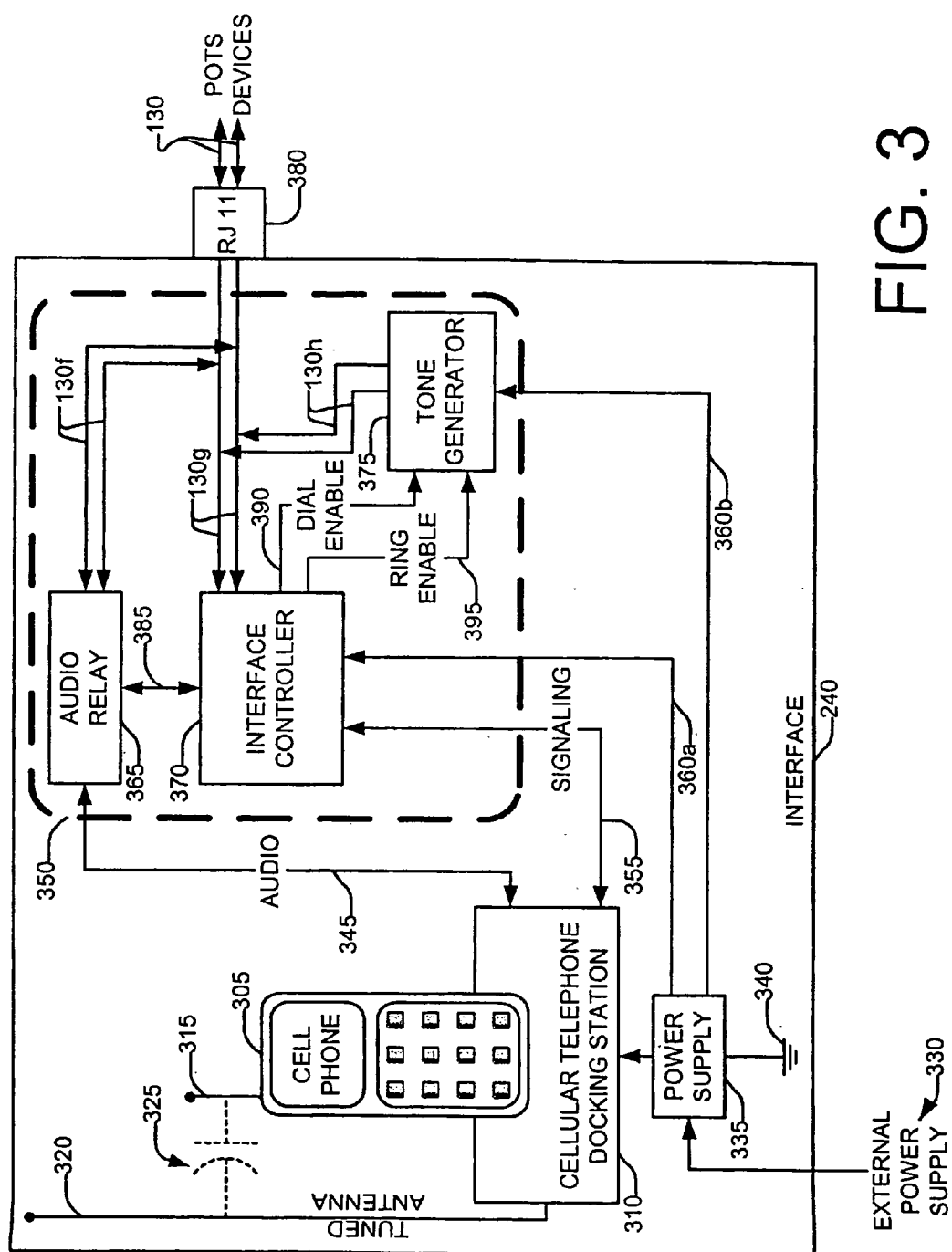


FIG. 3

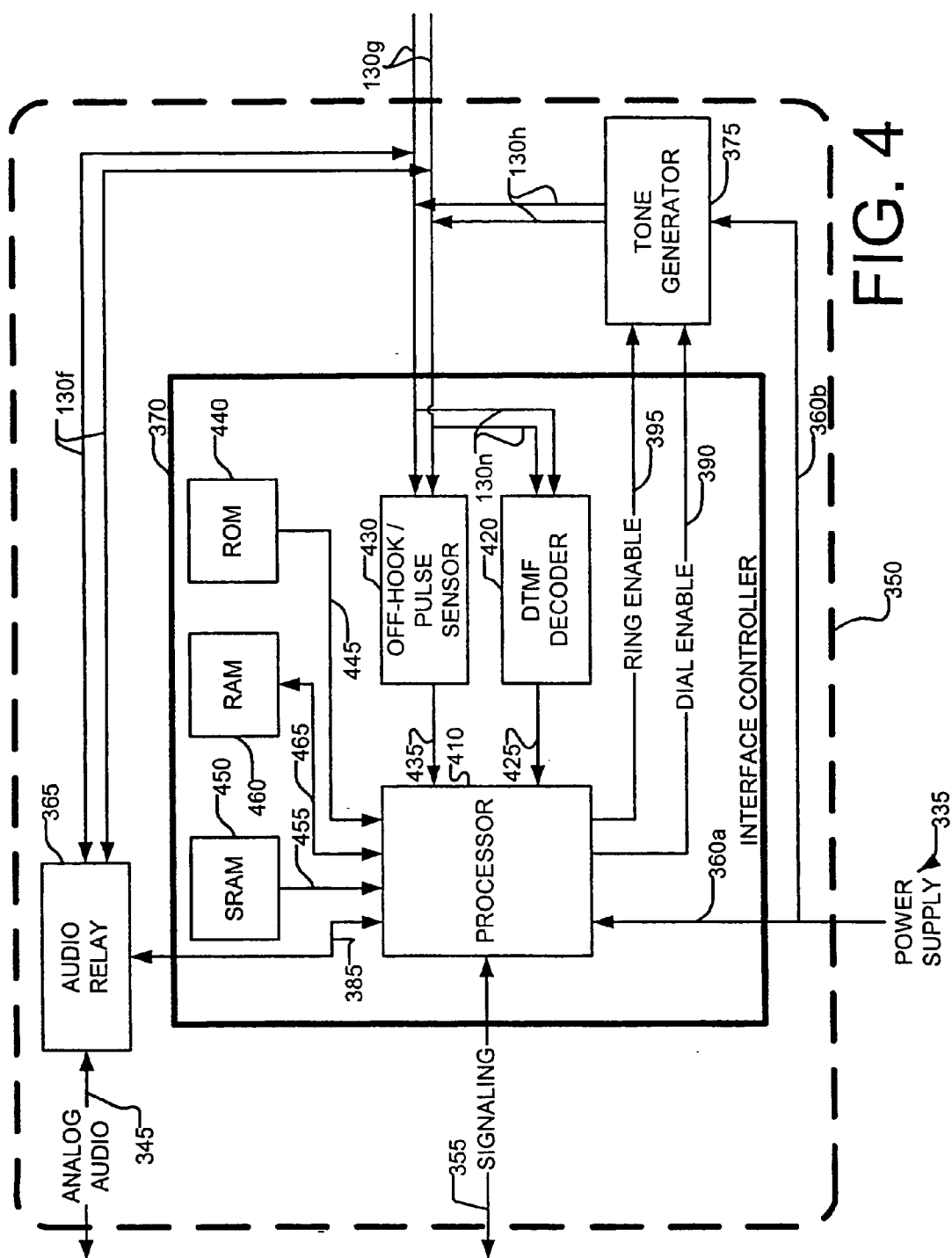


FIG. 4

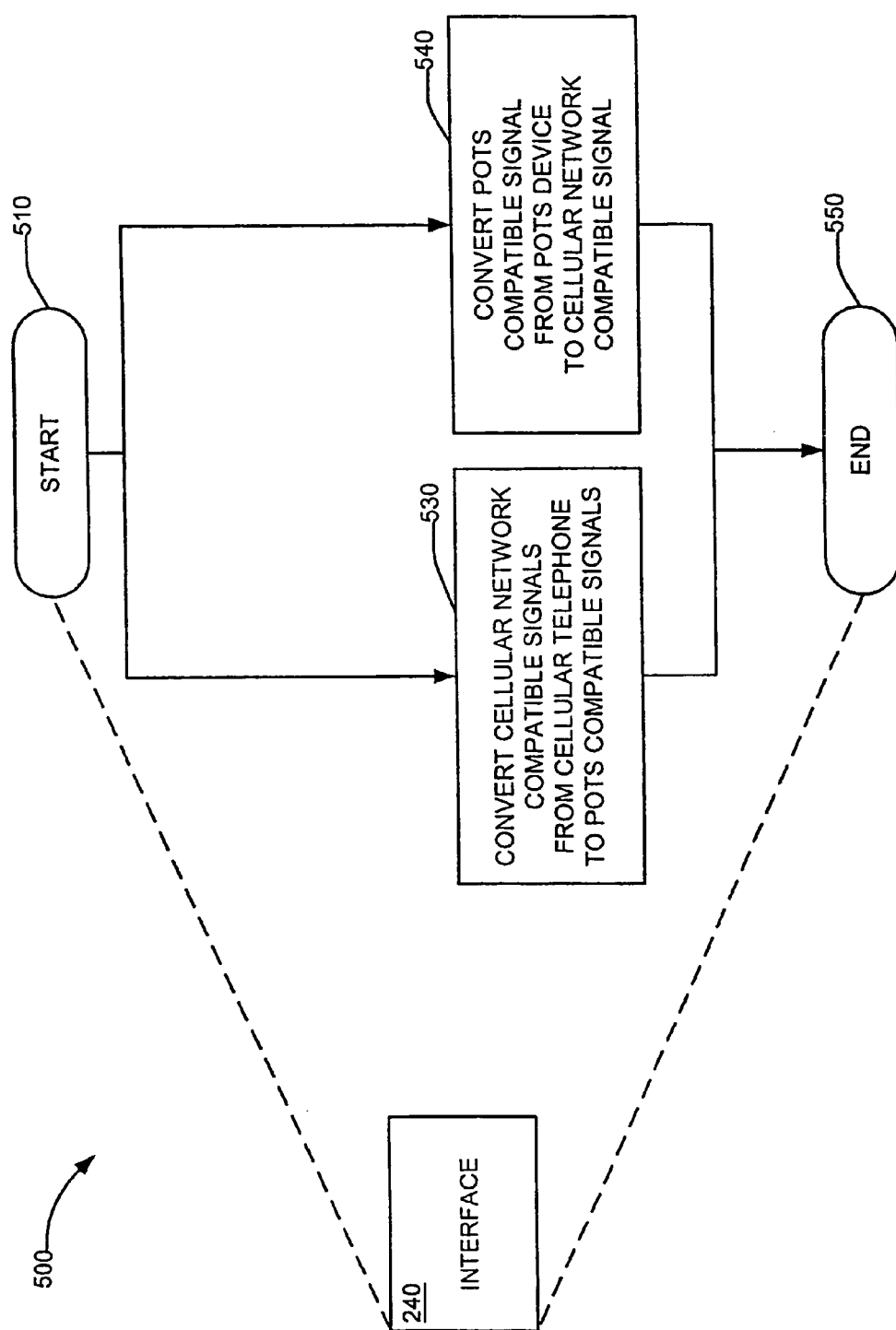


FIG. 5

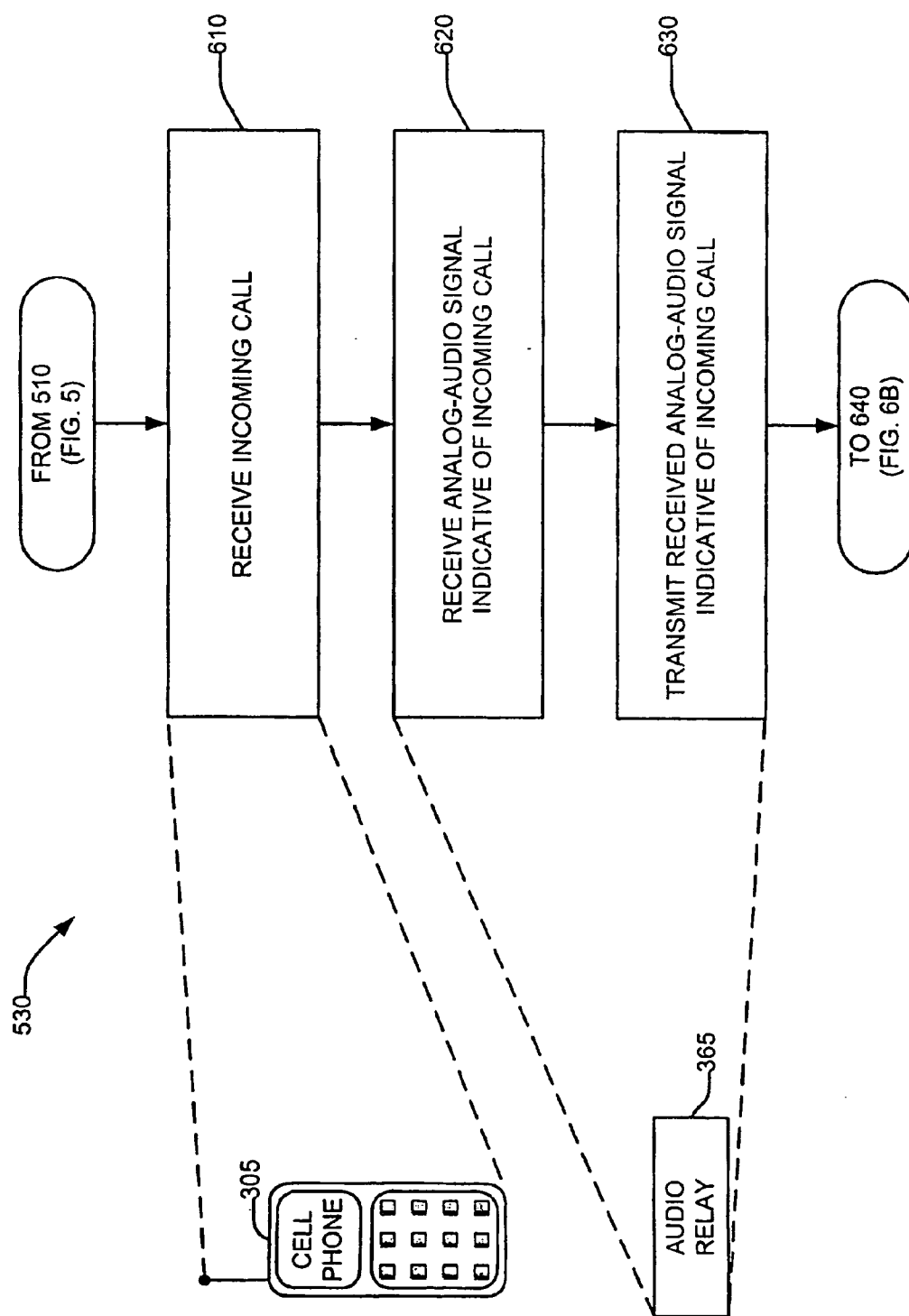


FIG. 6A

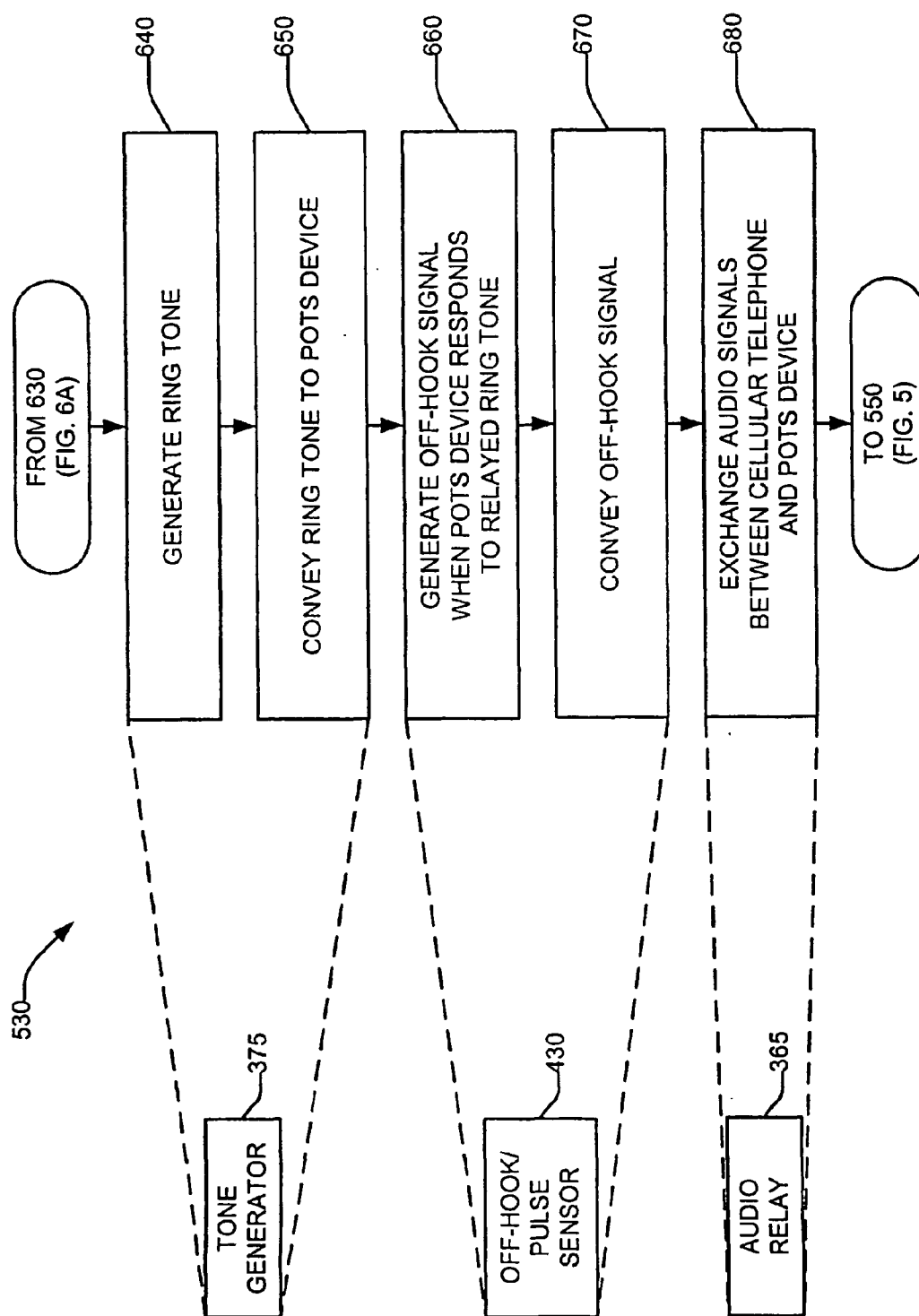


FIG. 6B

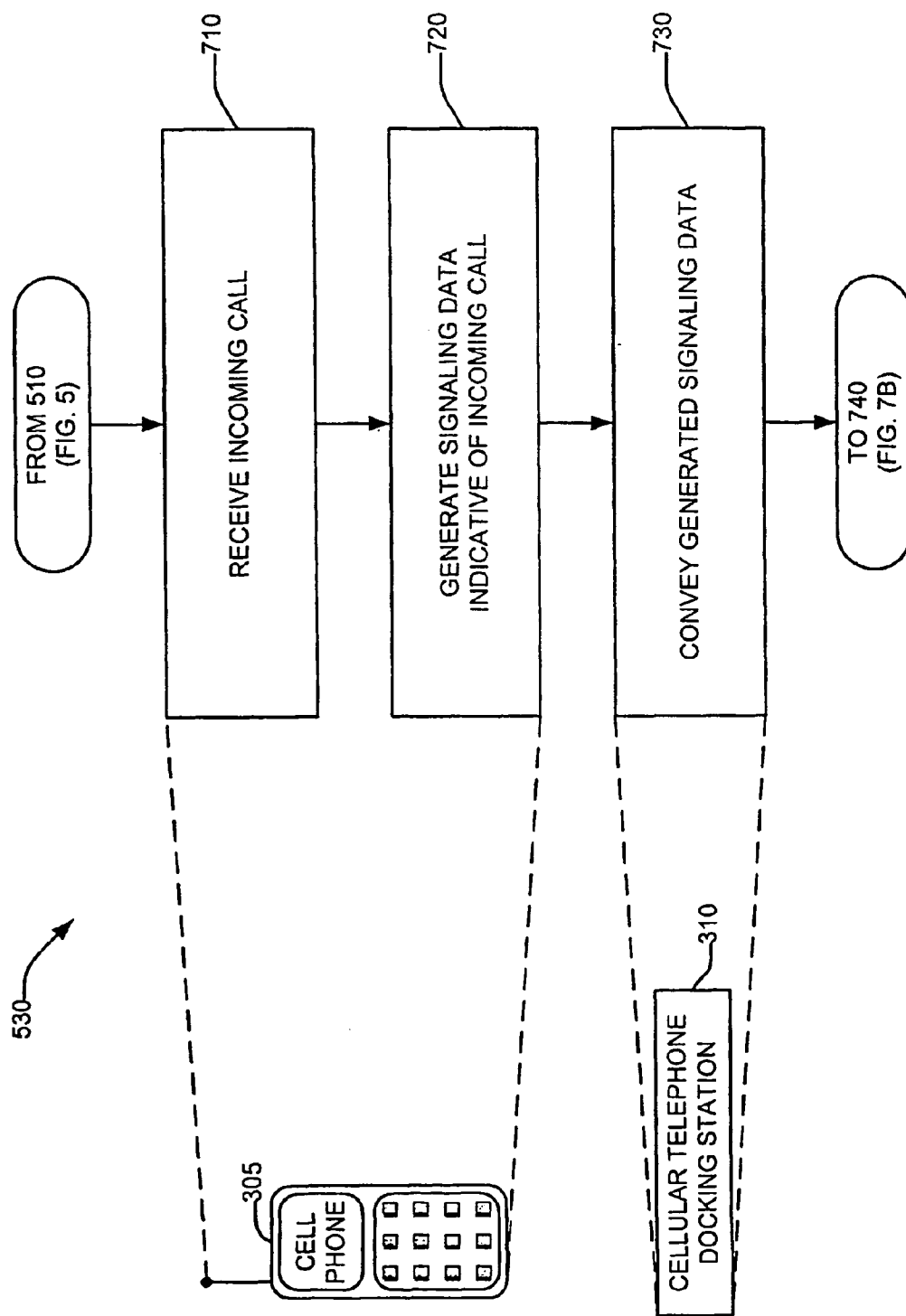


FIG. 7A

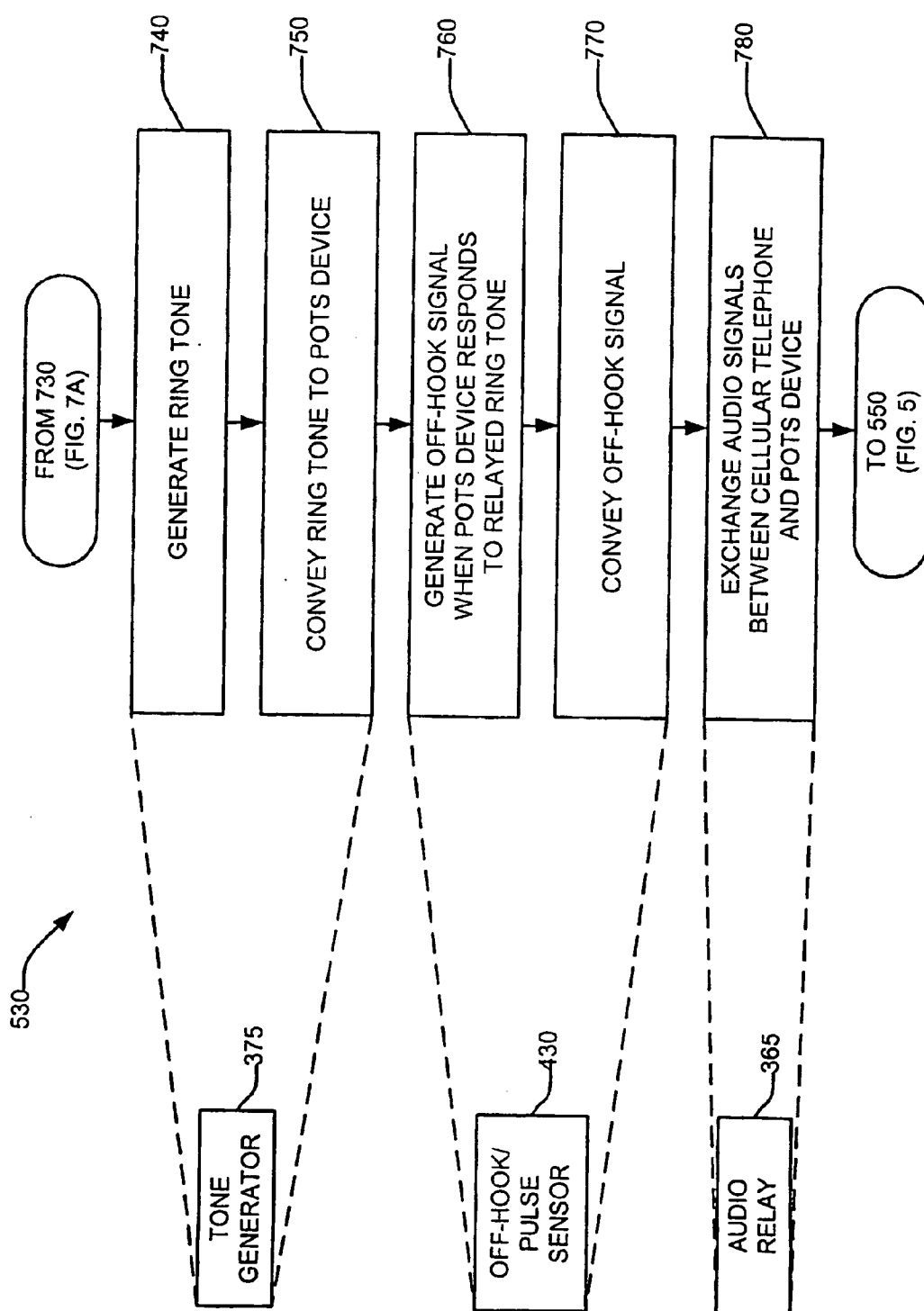


FIG. 7B

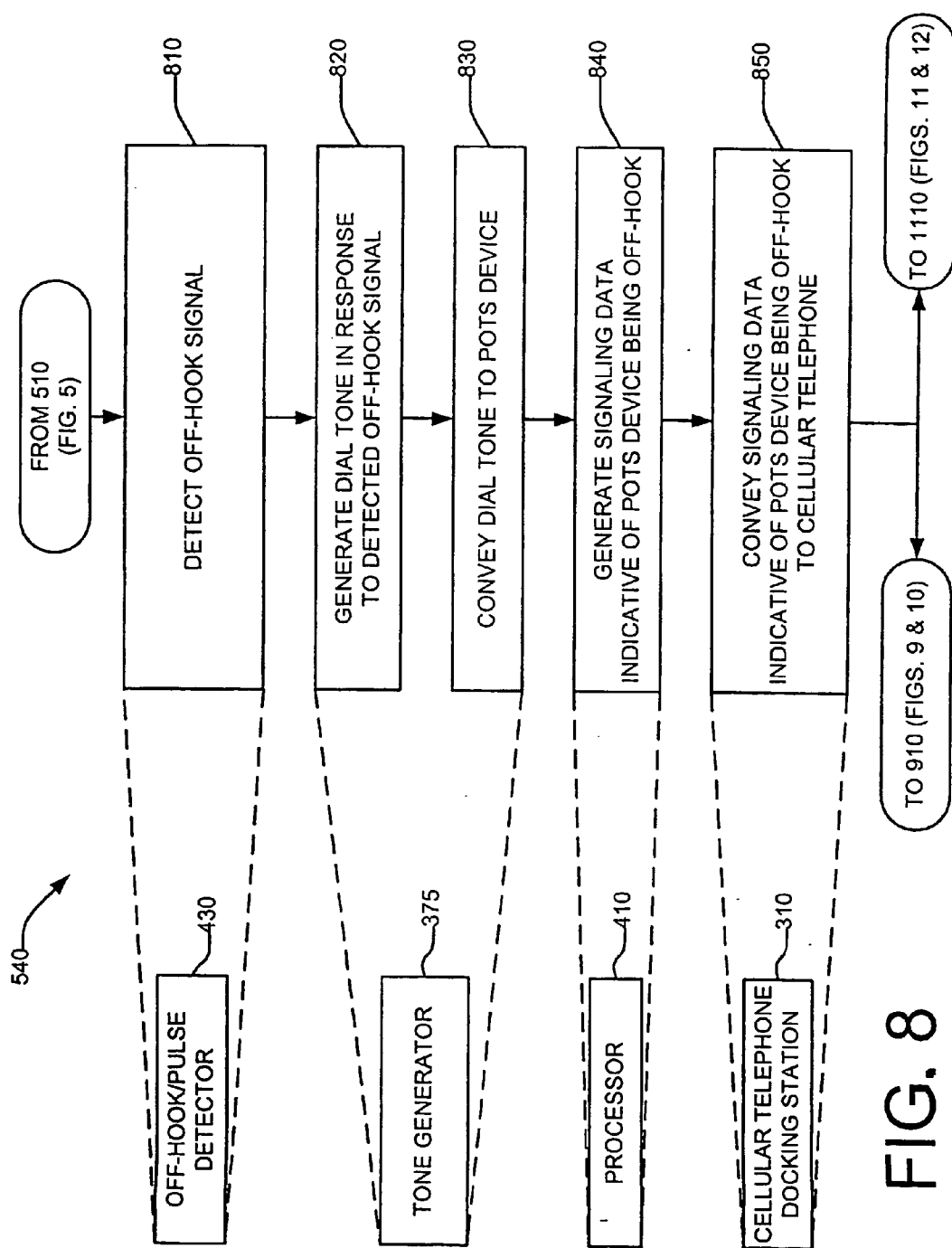


FIG. 8

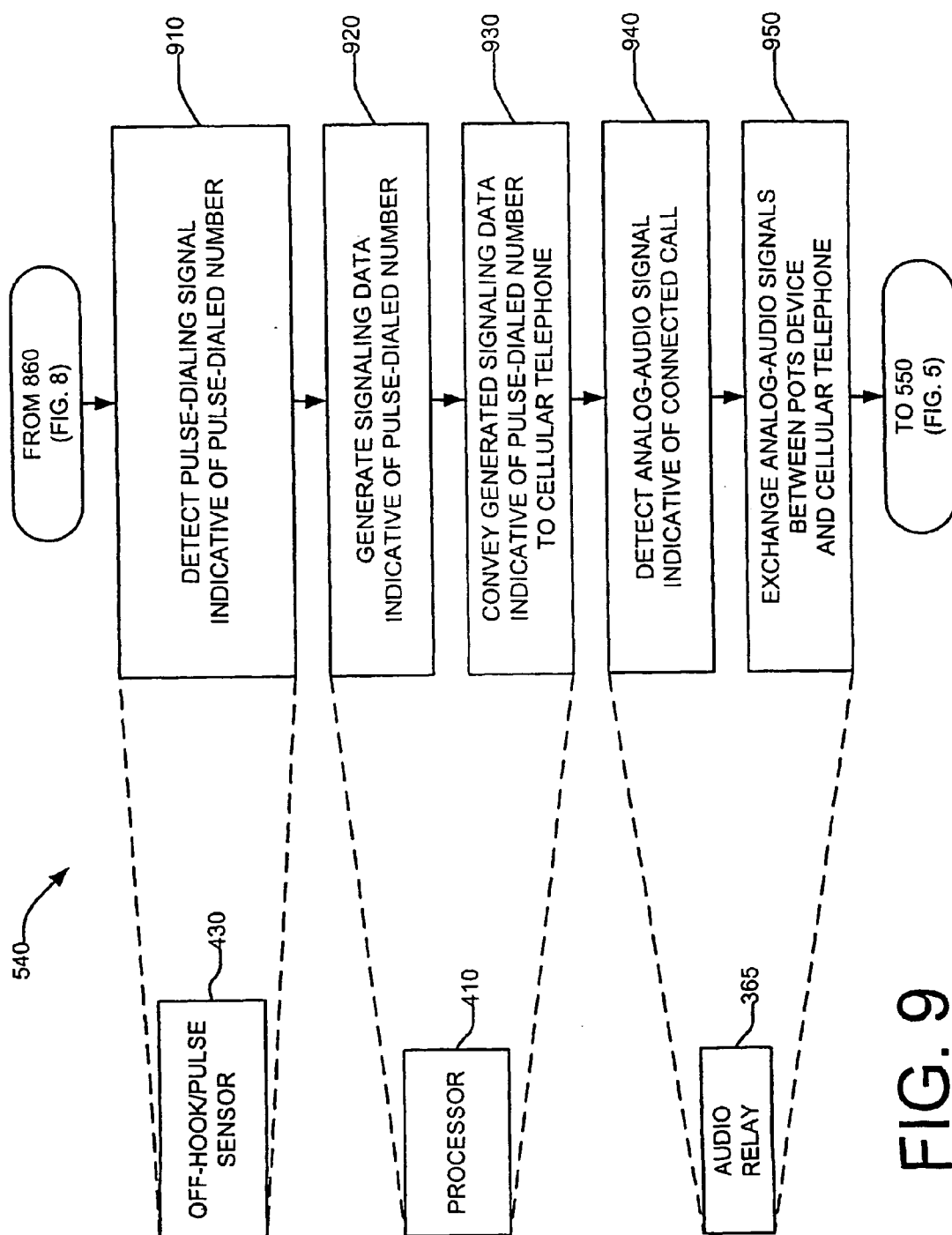


FIG. 9

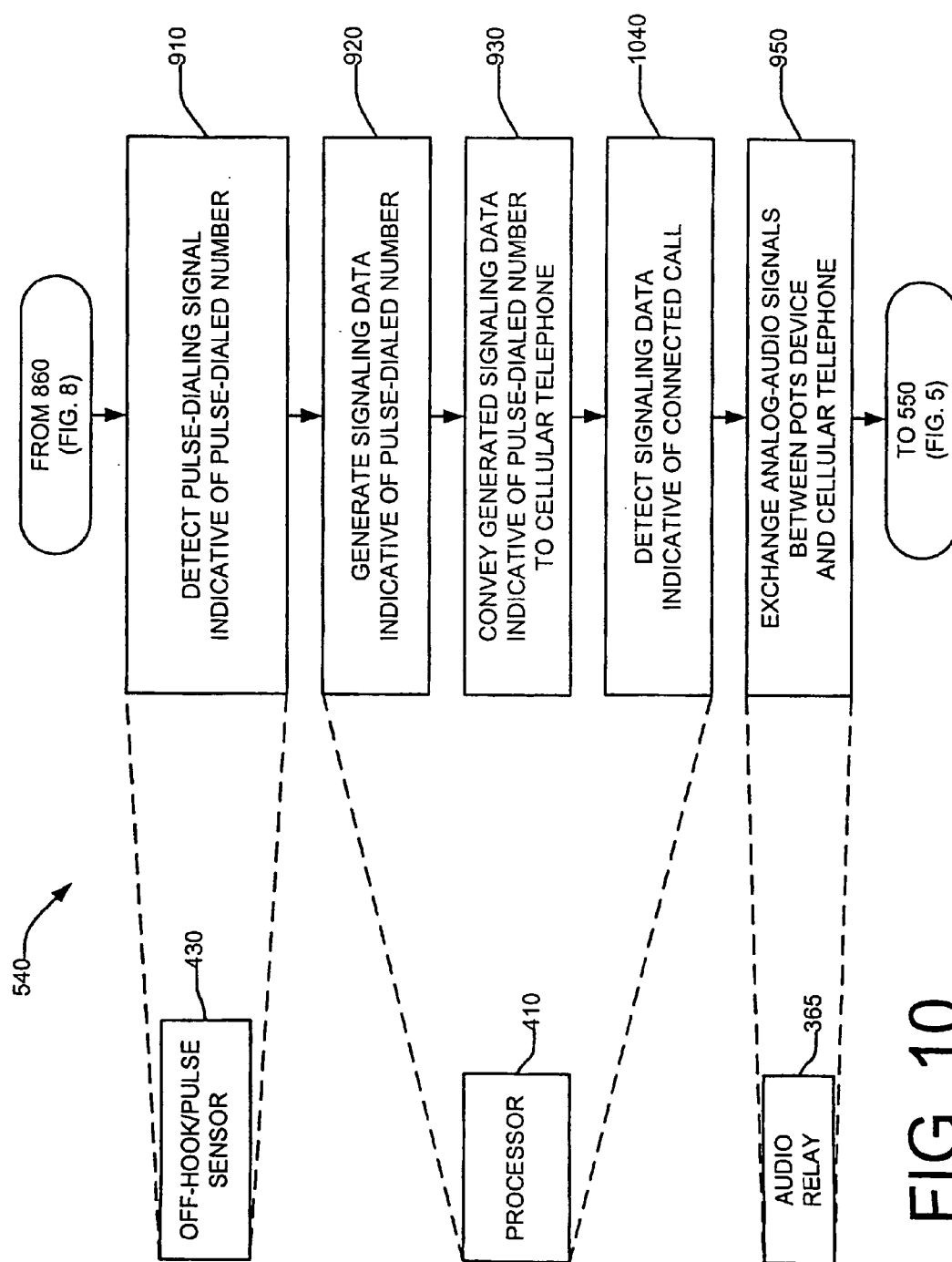


FIG. 10

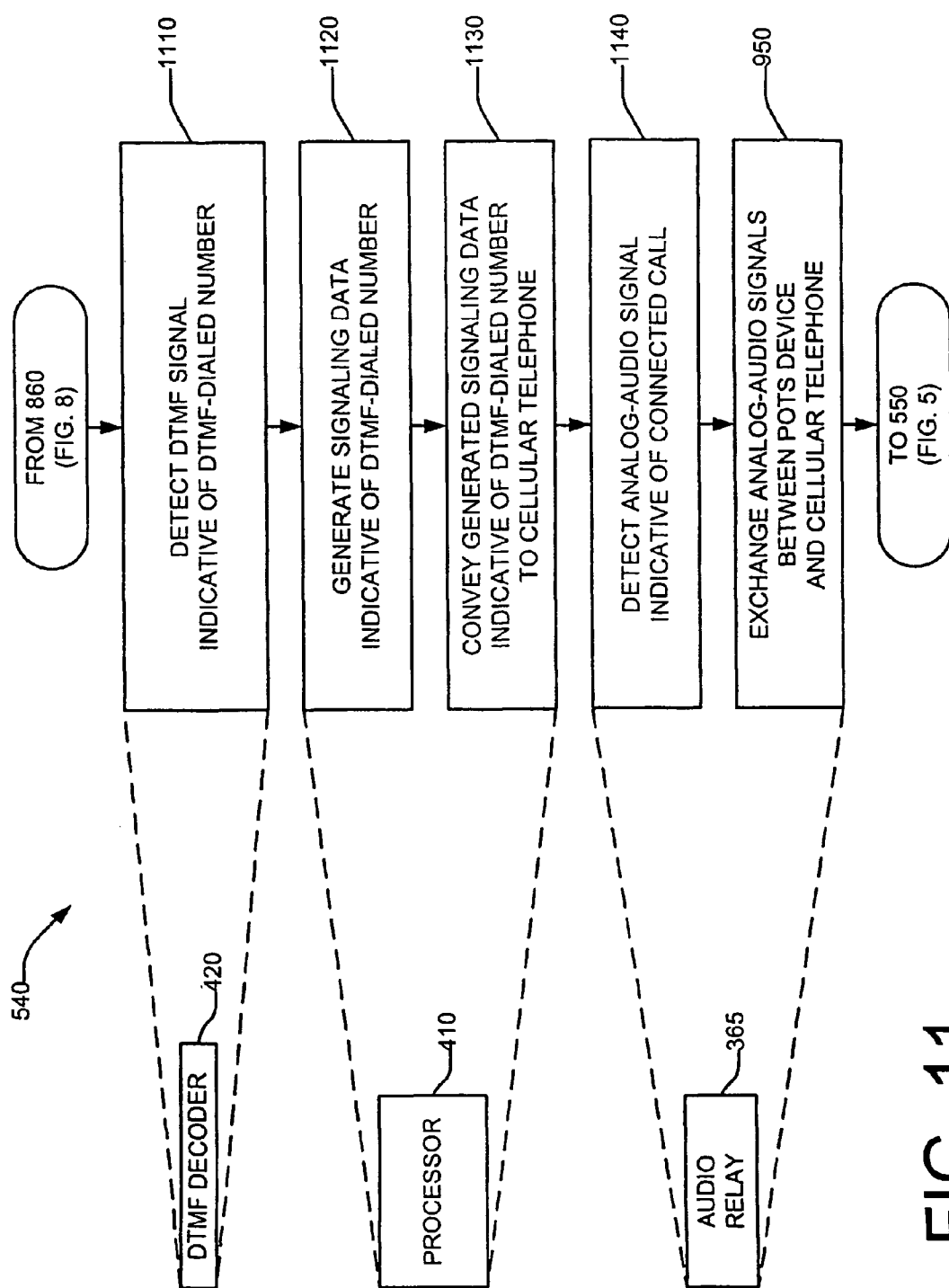
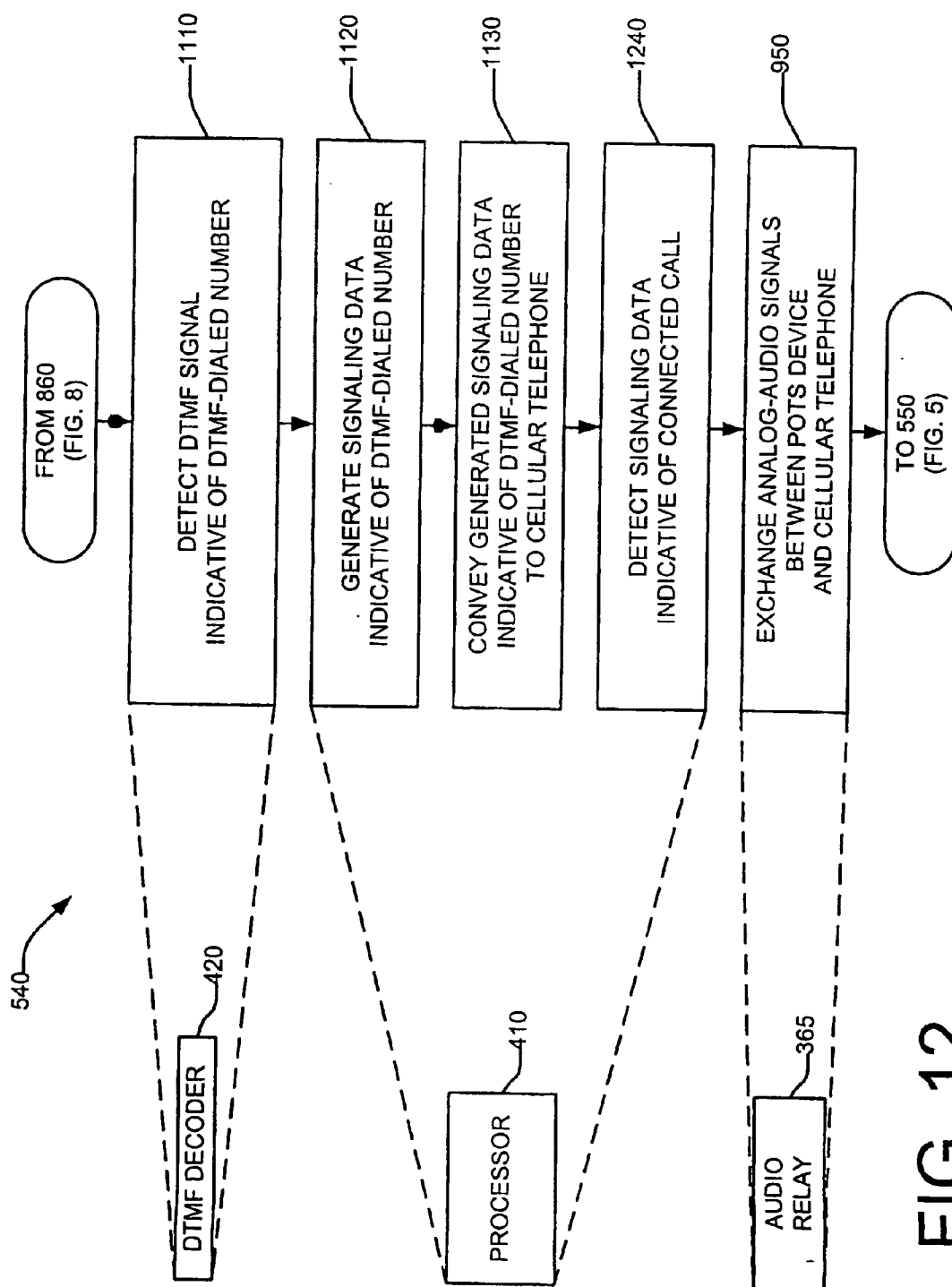


FIG. 11



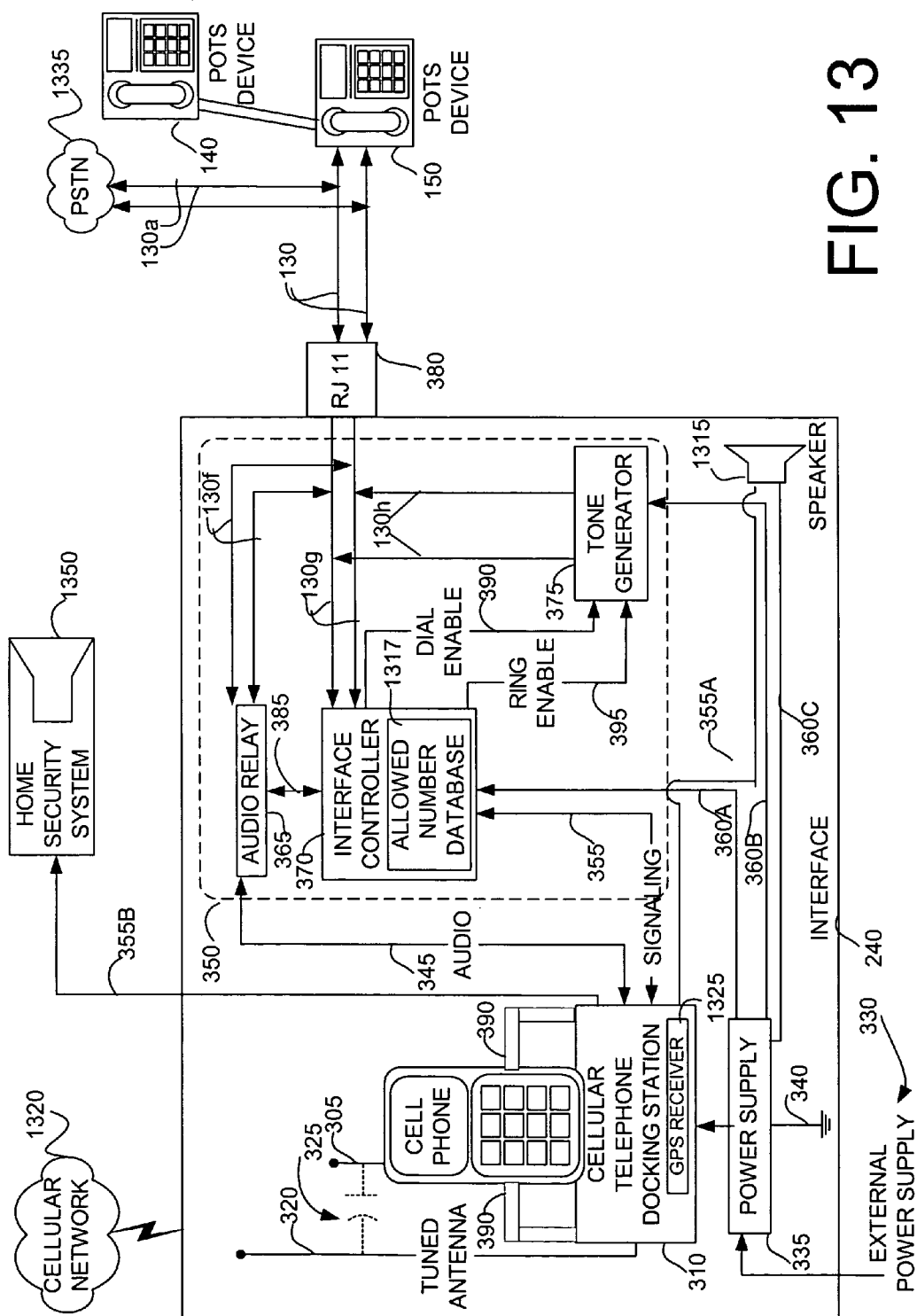


FIG. 13

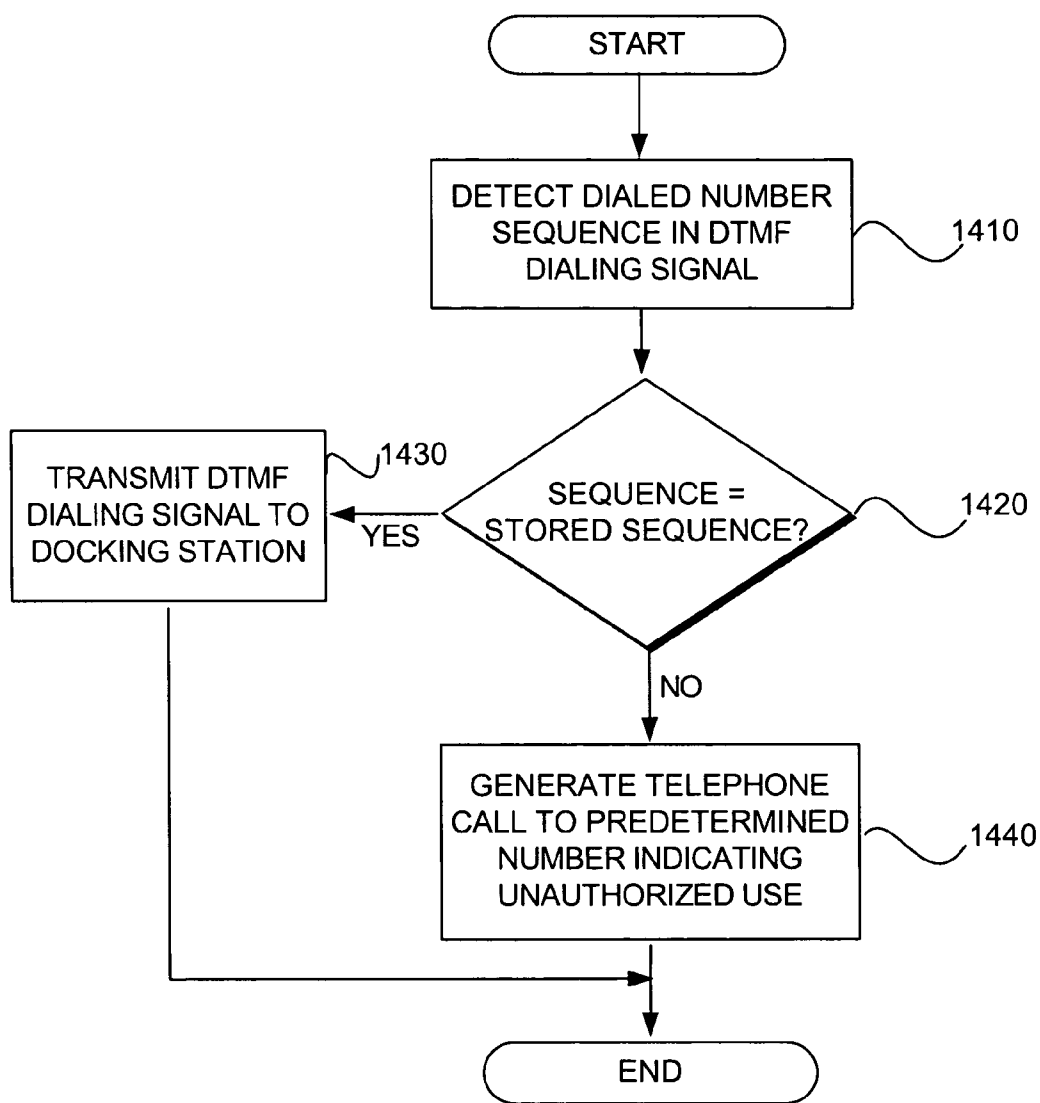
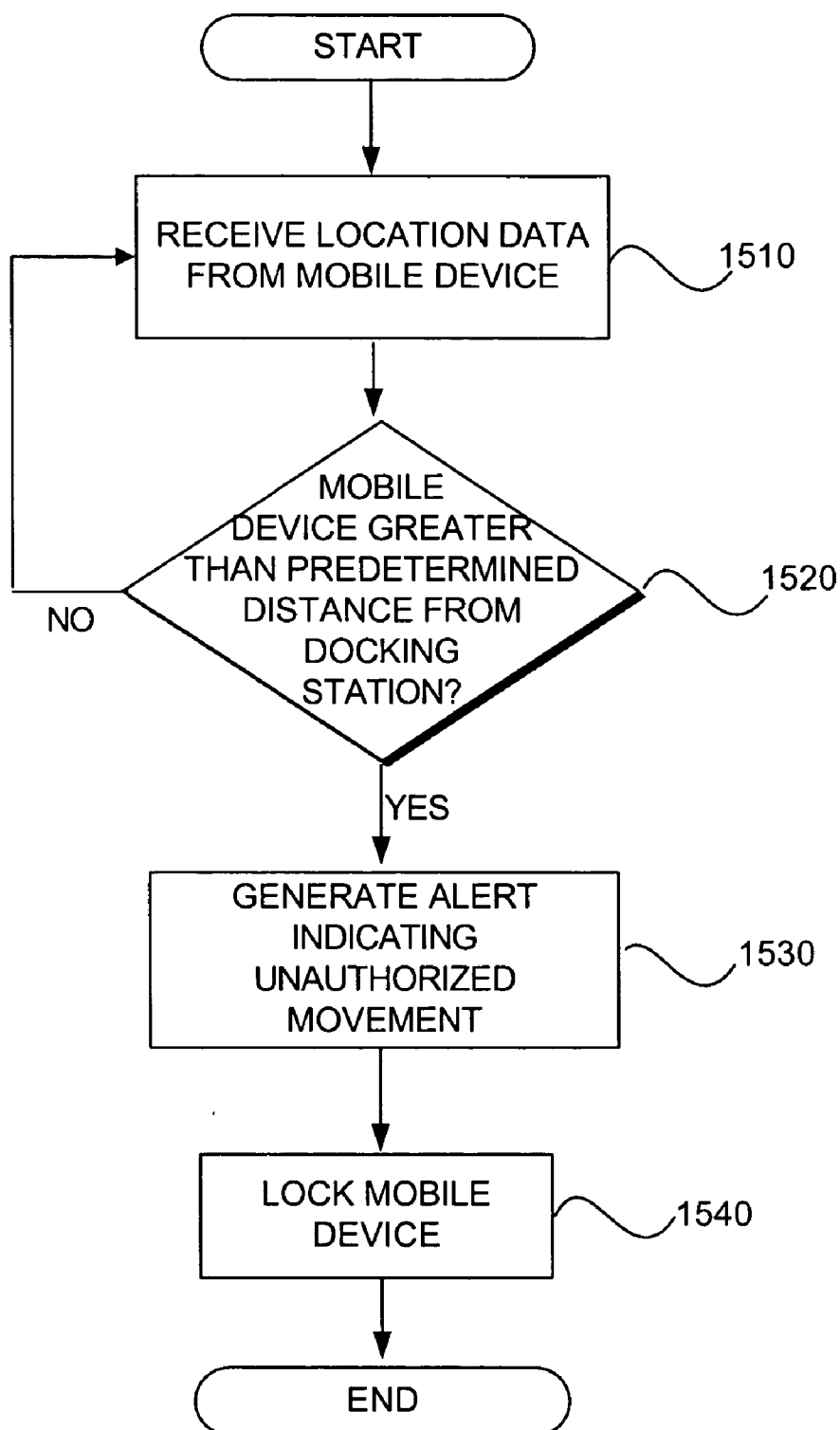


FIG. 14

**FIG. 15**

SYSTEMS AND METHODS FOR RESTRICTING THE USE AND MOVEMENT OF TELEPHONY DEVICES

CROSS REFERENCE TO RELATED APPLICATIONS

[0001] This patent application is a continuation-in-part of copending U.S. patent application Ser. No. 10/195,197, entitled "System and Method for Interfacing Plain Old Telephone System (POTS) Devices With Cellular Networks," filed on Jul. 15, 2002 and assigned to the same assignee as this application.

FIELD OF INVENTION

[0002] The present invention relates generally to telecommunications and, more particularly, to a system and method for restricting the use and movement of plain old telephone system (POTS) devices and cellular telephones.

BACKGROUND

[0003] The telephone has greatly facilitated communications between parties, especially when great distances separate the parties. Metropolitan cities and suburbs typically have sufficient access to a public switched telecommunications/telephone network (PSTN), as well as cellular networks. As access to PSTN and cellular networks has increased, a single subscriber may have several telephony devices, including plain old telephone system (POTS) devices and cellular telephones, available for use by any number of persons in the home. As a result of having multiple telephony devices in the home, many subscribers now find it difficult to simultaneously monitor the use and or location of each telephony device, especially when the subscriber is outside of the home. For example, a babysitter may often find it easy to access one or more telephony devices when the subscriber is away from the home. Thus, subscribers without the ability to restrict the use and access to telephony devices are often confronted with the undesired movement and/or the unauthorized use of these devices.

SUMMARY

[0004] A system and method are provided for interfacing plain old telephone system (POTS) devices with cellular networks.

[0005] Briefly described, in architecture, one illustrative embodiment, among others, may be seen as a system including an interface configured to only allow telephone calls to a limited set of telephone numbers or area codes. The interface is configured to detect a telephone number during a call and compare the number to a stored sequence list of allowed telephone numbers or area codes. If the detected number matches one of the allowed telephone numbers or area codes, the call attempt is allowed to continue. However, if the detected number does not match a number in the stored sequence list, the call attempt is blocked by the interface.

[0006] Another illustrative embodiment, among others, may be seen as a system including an interface configured to restrict the movement of a mobile telephony device. The interface is configured to receive location data, such as global positioning system (GPS data), from the mobile telephony device and generate an alert when the location of the mobile telephony device is greater than a predetermined

distance from the interface. The alert may be an audible alarm or, alternatively, the interface may be configured to dial a predetermined telephone number to indicate the unauthorized movement of the mobile telephony device. The interface may also be configured to lock the mobile telephony device to prevent its use upon the device being moved greater than the predetermined distance.

[0007] Other systems, methods, features, and advantages will be or become apparent to one with skill in the art upon examination of the following drawings and detailed description. It is intended that all such additional systems, methods, features, and advantages be included within this description, and be within the scope of the present invention.

BRIEF DESCRIPTION OF THE DRAWINGS

[0008] Many aspects of the invention can be better understood with reference to the following drawings. The components in the drawings are not necessarily to scale, emphasis instead being placed upon clearly illustrating the principles of the present invention. Moreover, in the drawings, like reference numerals designate corresponding parts throughout the several views.

[0009] FIG. 1 is a block diagram showing a conventional plain old telephone system (POTS) connection to a telephone company through a network interface device.

[0010] FIG. 2 is a block diagram showing one illustrative embodiment of the system for interfacing POTS devices with cellular networks.

[0011] FIG. 3 is a block diagram showing one illustrative embodiment of the interface of FIG. 2.

[0012] FIG. 4 is a block diagram showing one illustrative embodiment of the hardware within the interface of FIG. 3.

[0013] FIG. 5 is a flowchart showing one illustrative embodiment of the method for interfacing POTS devices with cellular networks.

[0014] FIGS. 6A and 6B are flowcharts showing one illustrative embodiment of the method associated with the conversion of cellular network compatible signals to POTS compatible signals.

[0015] FIGS. 7A and 7B are flowcharts showing another illustrative embodiment of the method associated with the conversion of cellular network compatible signals to POTS compatible signals.

[0016] FIG. 8 is a flowchart showing several steps associated with the conversion of POTS compatible signals to cellular network compatible signals.

[0017] FIGS. 9 through 12 are flowcharts showing several illustrative embodiments of the method associated with the conversion of POTS compatible signals to cellular network compatible signals.

[0018] FIG. 13 is a block diagram showing an alternative illustrative embodiment of the interface 240 of FIG. 2.

[0019] FIGS. 14 through 15 are flowcharts showing several illustrative embodiments of the method associated with the restriction and use of POTS devices and cellular telephones.

DETAILED DESCRIPTION OF THE ILLUSTRATIVE EMBODIMENTS

[0020] Reference will now be made in detail to the description. While several illustrative embodiments of the invention will be described in connection with these drawings, there is no intent to limit it to the illustrative embodiment or illustrative embodiments disclosed therein. On the contrary, the intent is to cover all alternatives, modifications, and equivalents included within the spirit and scope of the invention as defined by the claims.

[0021] FIG. 1 is a block diagram showing a conventional plain old telephone system (POTS) connection to a public switched telephone network (PSTN) 110 through a network interface device (NID) 140. Since such connections are well known, only a cursory discussion is presented here. As shown in FIG. 1, several POTS devices 140, 150 occupy a location 120 (e.g., home, business, etc.). Each POTS device 140, 150 is connected to the NID 140 by two-conductor pair wires 130b, 130c, also known as POTS pairs, or twisted pairs. The NID 140 serves as the interface between the POTS devices 140, 150 and the PSTN 110, wherein the NID 140 is connected to the PSTN 110 through at least a two-conductor pair 130a or landline 130a. As evident from FIG. 1, if the landline 130a is severed, or if the landline 130a is unavailable due to geographical limitations, then the POTS devices 140, 150 within the location 120 have no connection to the PSTN 110.

[0022] FIG. 2 is a block diagram showing one illustrative embodiment of a system for interfacing POTS devices 140, 150 with cellular networks. As shown in FIG. 2, one or more POTS devices 140, 150 occupy a location 120. However, unlike FIG. 1, the POTS devices 140, 150 in FIG. 2 are configured to communicate with at least one cellular tower 250 through an interface 240, thereby permitting connection between the POTS devices 140, 150 and a cellular network. In this sense, the POTS devices 140, 150 are connected to the interface 240, rather than an NID 140 (FIG. 1), by two-conductor pair wires 130d, 130e. Since the interface 240 is a bridge between the POTS devices 140, 150 and the cellular network, the interface 240 is configured to receive POTS compatible signals from the POTS devices 140, 150 and convert the POTS compatible signals to cellular network compatible signals, which are transmitted from the interface 240 to the cellular tower 250. Additionally, the interface 240 is configured to receive cellular network compatible signals from the cellular tower 250 and convert the cellular network compatible signals to POTS compatible signals, which are then forwarded to the POTS devices 140, 150 for use within the location 120. While a specific PSTN network is now shown in FIG. 2, it will be clear to one of ordinary skill in the art that the cellular tower 250 may be connected to a PSTN network, thereby permitting communication with other PSTN devices.

[0023] FIG. 3 is a block diagram showing, in greater detail, a preferred illustrative embodiment of the interface 240 of FIG. 2. In the preferred illustrative embodiment, the cellular network compatible signals are transmitted and received at the interface 240 by a cellular telephone 305 while the POTS compatible signals are transmitted and received at the interface 240 through a POTS connector 380, such as an RJ11 connector 380. Thus, in the preferred illustrative embodiment, the interface 240 comprises a cel-

lular phone docking station 310 that is configured to interface with the cellular telephone 305, thereby establishing a communications link with the cellular telephone 305. The cellular phone docking station 310 may also have a tuned antenna 320 that is configured to improve transmission and reception by the cellular telephone 305, thereby providing a more robust connection to the cellular network through the cellular tower 250 (FIG. 2). The tuned antenna 320 may be coupled to a cellular telephone antenna 315 in a non-destructive, non-contact, or capacitive manner, for example, using capacitive coupling 325, as shown in FIG. 3. In addition to interfacing with a cellular telephone 305 through one of a variety of conventional connectors (not shown), the cellular phone docking station 310 is configured to receive signaling data through signaling line 355, which may include commands associated with outgoing telephone calls. Thus, in one illustrative embodiment, the signaling data on signaling line 355 may be indicative of a telephone number. The received signaling data on signaling line 355 is conveyed to the cellular telephone 305 by the cellular phone docking station 310, thereby permitting control over certain operations of the cellular telephone 305 using the signaling data on signaling line 355. In conveying the signaling data on signaling line 355, the cellular phone docking station 305 may modify the signaling data on signaling line 355 appropriately (e.g., amplify, attenuate, reformat, etc.), or, alternatively, the cellular phone docking station 305 may relay the signaling data on signaling line 355 without modification. Regardless of whether or not the signaling data on signaling line 355 is modified, several aspects of the conveyed signal are discussed below, in greater detail, with reference to other components 350 associated with the interface 240.

[0024] In addition to the cellular phone docking station 310, the interface 240 comprises an interface controller 370, an audio relay 365, a tone generator 375, and a power supply 335. The audio relay 365 is configured to exchange analog-audio signals 345 between the POTS devices 140, 150 (FIG. 2) and the cellular phone docking station 310. In this sense, for incoming analog-audio signals 345 (i.e., audio from the cellular telephone 305 to the POTS devices 140, 150 (FIG. 2)), the audio relay 365 receives analog-audio signals 345 from the cellular phone docking station 310 and transmits the analog-audio signals 345 to the POTS devices 140, 150 (FIG. 2) through the POTS connector (e.g., RJ11 connector) 380. Similarly, for outgoing analog-audio signals 345 (i.e., audio from the POTS devices 140, 150 (FIG. 2) to the cellular telephone 305), the analog audio signals 345 are received by the audio relay 365 through the POTS connector 380 and transmitted to the cellular phone docking station 310. Thus, the audio relay 365 provides a bi-directional communication link for the analog-audio signals 345 between the POTS devices 140, 150 (FIG. 2) and the cellular phone docking station 310. In a preferred illustrative embodiment, the audio relay 365 is also configured to either amplify or attenuate the analog-audio signals 345 in response to audio-control signals 385 generated by the interface controller 370. Thus, the behavior of the audio relay 365 is governed by the interface controller 370, which is discussed in greater detail below.

[0025] The tone generator 375 is configured to generate certain tones that are used by the POTS devices 140, 150 (FIG. 2). For example, when there is an incoming telephone call, the POTS devices 140, 150 (FIG. 2) "ring" to indicate the presence of the incoming telephone call. The tone

generator 375, in such instances, is configured to generate a ring tone, which is then transmitted to the POTS devices 140, 150 (FIG. 2) through the POTS connector 380. The transmitted ring tone indicates to the POTS devices 140, 150 (FIG. 2) that they should “ring,” thereby notifying the user of the incoming telephone call. The ring tone is generated in response to a ring enable signal on ring enable line 395, which is discussed below with reference to the interface controller 370.

[0026] In another example, when a user picks up a POTS telephone 140 (FIG. 2), a dial-tone is produced at the POTS telephone 140 (FIG. 2). The tone generator 375 is configured to generate the dial tone and transmit the generated dial tone to the POTS telephone 140 (FIG. 2). The dial tone is generated in response to a dial enable signal on dial enable line 390, which is also discussed below with reference to the interface controller 370.

[0027] The power supply 335 is configured to provide the components of the interface 240 with the requisite power. In this sense, the power supply 335 is connected to an external power supply 330 from which it receives external power. The external power is converted by the power supply 335 to a DC voltage, which is used to power the cellular phone docking station 310, the tone generator 375, the interface controller 370, and any other device in the interface 240 that may be powered by a DC source.

[0028] The interface controller 370 is configured to control the behavior of the audio relay 365, the tone generator 375, and the cellular phone docking station 310 during the conversion of POTS compatible signals to cellular network compatible signals, and vice versa. Thus, when an outgoing telephone call is placed by one of the POTS devices 140, 150 (FIG. 2), the interface controller 370 receives the dialed numbers and converts the dialed numbers to a digital command. The digital command is transmitted as signaling data on signaling line 355 from the interface controller 370 to the cellular phone docking station 310, which, in turn, transmits the signaling data on signaling line 355 to the cellular telephone 305. The signaling data, therefore, 355 instructs the cellular telephone 305 to dial the number. In one illustrative embodiment, when the number has been dialed and the called party picks up the phone, the cellular telephone 305 detects the connection and conveys an analog-audio signal 345 to the audio relay 365. In this illustrative embodiment, the audio relay 365 subsequently indicates to the interface controller 370 that the call is connected, and the interface controller 370 generates an audio-control signal 385, thereby enabling bi-directional audio communication of analog-audio signals 345 (i.e., talking between the connected parties) through the audio relay 365. If the party on the POTS telephone 140 (FIG. 2) disconnects (i.e., hangs up the phone), then the disconnect is detected by the interface controller 370 through the POTS connector 380. In this illustrative embodiment, the interface controller 370 generates another audio-control signal 385 in response to the disconnect, thereby disabling the audio relay 365 and terminating the bi-directional audio communication between the POTS telephone 140 (FIG. 2) and the cellular telephone 305. The interface controller 370 further generates, in response to the disconnect, signaling data on signaling line 355, which instructs the cellular telephone 305 to stop transmission and reception. If, on the other hand, the cellular telephone 305 disconnects, then this is detected by the audio

relay 365 in one illustrative embodiment. The audio relay 365, in turn, transmits the disconnect information to the interface controller 370, and the interface controller 370 subsequently generates the audio-control signal 385 to disable the audio relay 365.

[0029] In another illustrative embodiment, information relating to the connected call is transmitted to the interface controller 370 as signaling data on signaling line 355, rather than as an analog-audio signal 345. In this illustrative embodiment, the cellular telephone 305 generates signaling data on signaling line 355 when the connection is established. The signaling data on signaling line 355 is received by the interface controller 370, which generates an audio-control signal 385 in response to the received signaling data on signaling line 355. The audio-control signal 385 enables the audio relay 365, thereby permitting bi-directional audio communication between the POTS telephone 140 (FIG. 2) and the cellular telephone 305. If the party on the POTS telephone 140 (FIG. 2) disconnects (i.e., hangs up the phone), then the disconnect is detected by the interface controller 370 through the POTS connector 380. The interface controller 370 subsequently generates an audio-control signal 385 to disable the audio relay 365, thereby terminating the bi-directional audio communication between the POTS telephone 140 (FIG. 2) and the cellular telephone 305. If, however, the cellular telephone 305 disconnects, then the cellular telephone 305, in this illustrative embodiment, generates signaling data on signaling line 355 indicative of the disconnected call. The generated signaling data on signaling line 355 is transmitted to the interface controller 370, which subsequently generates an audio-control signal 385 to disable the audio relay 365.

[0030] In the case of an incoming telephone call, the cellular telephone 305 detects the incoming telephone call and conveys this information to the interface controller 370. In one illustrative embodiment, the information is conveyed to the interface controller 370 through the audio relay 365. Thus, in this illustrative embodiment, the incoming telephone call generates an analog-audio signal 345 at the cellular telephone 305. The analog-audio signal 345 is transmitted from the cellular telephone 305 to the audio relay 365 through the cellular phone docking station 310, and the audio relay 365 then indicates to the interface controller 370 that there is an incoming call. The interface controller 370 receives this information and generates a ring enable signal on ring enable line 395. The ring enable signal on ring enable line 395 is received by the tone generator 375, which generates the ring tone in response to the ring enable signal on ring enable line 395. The ring tone makes the POTS devices 140, 150 (FIG. 2) “ring.” When one of the POTS device 140, 150 (FIG. 2) is picked up and a connection is established, the interface controller 370 detects the established call and generates signaling data on signaling line 355, which indicates to the cellular telephone 305 that the connection is established. Additionally, the interface controller 370 generates an audio-control signal 385, which enables the audio relay 365 for bi-directional audio communication between the POTS device 140, 150 (FIG. 2) and the cellular telephone 305. When the call ends, the system disconnects as described above.

[0031] In another illustrative embodiment, the information is conveyed to the interface controller 370 through signaling data on signaling line 355. Thus, in this illustrative embodi-

ment, when the cellular telephone 305 detects an incoming telephone call, it generates signaling data on signaling line 355. The signaling data on signaling line 355 is transmitted to the interface controller 370, thereby indicating that there is an incoming call. The interface controller 370 receives this information and generates a ring enable signal on ring enable line 395. The ring enable signal on ring enable line 395 is received by the tone generator 375, which generates the ring tone in response to the ring enable signal on ring enable line 395. The tone makes the POTS devices 140, 150 (FIG. 2) "ring." When one of the POTS devices 140, 150 (FIG. 2) is picked up and a connection is established, the interface controller 370 detects the established call and generates signaling data on signaling line 355, which indicates to the cellular telephone 305 that the connection is established. Additionally, the interface controller 370 generates an audio-control signal 385, which enables the audio relay 365 for bi-directional audio communication between the POTS device 140, 150 (FIG. 2) and the cellular telephone 305. When the call ends, the system disconnects as described above.

[0032] FIG. 4 is a block diagram showing the interface controller 370 of FIG. 3 in greater detail. The interface controller 370 is shown in FIG. 4 as comprising a processor 410, random-access memory (RAM) 460, read-only memory (ROM) 440, static-random-access memory (SRAM) 450, an off-hook/pulse sensor 430, and a dual-tone multi-frequency (DTMF) decoder 420. The ROM 440 is configured to store the instructions that run the interface controller 370. In this sense, the ROM 440 is configured to store the program that controls the behavior of the interface controller 370, thereby allowing the interface controller 370 to convert POTS compatible signals to cellular network compatible signals, and vice versa. The SRAM 450 is adapted to store configuration information, such as whether the system is amenable to 1 0-digit dialing or 7-digit dialing, international calling protocols, etc. Thus, the SRAM 450 may be adapted differently for systems that are used in different geographical areas, or systems that use different calling protocols. The RAM 460 is configured to store temporary data during the running of the program by the processor 410. The processor is configured to control the operation of the off-hook/pulse sensor 430, the DTMF decoder 420, the tone generator 375, and the audio relay 365 in accordance with the instructions stored in ROM 440. Additionally, the processor 410 is configured to generate signaling data on signaling line 355, which may instruct the cellular telephone 305 (FIG. 3) to dial a number, disconnect a call, etc. Several of these functions are discussed in detail below with reference to the off-hook/pulse sensor 430 and the DTMF decoder 420.

[0033] The off-hook/pulse sensor 430 is configured to detect when any of the POTS devices 140, 150 (FIG. 2) are off-hook and generate an off-hook signal 435 when a POTS device 140, 150 (FIG. 2) is detected as being off-hook. In this sense, the off-hook/pulse sensor 430 is connected to the POTS connector 380 (FIG. 3) through the two-conductor pair wires 130g. Thus, when any of the POTS devices 140, 150 (FIG. 2) connected to the two-conductor pair 130 go off-hook, the off-hook is detected by the off-hook/pulse sensor 430, which is also connected to the two-conductor pair 130. The off-hook/pulse sensor 430 generates an off-hook signal 435 after detecting that a POTS device 140, 150 (FIG. 2) is off-hook, and subsequently transmits the off-

hook signal 435 to the processor 410. If the POTS device 140, 150 (FIG. 2) is receiving an incoming call, then the off-hook signal 435 indicates that the POTS device 140, 150 (FIG. 2) has "picked up" the incoming call, thereby alerting the processor 410 that the processor 410 should establish a bi-directional audio connection between the cellular telephone 305 (FIG. 3) and the POTS device 140, 150 (FIG. 2). If, on the other hand, the POTS device 140, 150 (FIG. 2) is placing an outgoing call, then the off-hook signal 435 alerts the processor 410 that a phone number will soon follow. In either event, the off-hook/pulse sensor 430 transmits the off-hook signal 435 to the processor 410, which, in turn, generates signaling data on signaling line 355 indicative of the POTS device 140, 150 (FIG. 2) being off-hook. The signaling data on signaling line 355 is then conveyed, either with or without modification, to the cellular telephone 305 through the cellular phone docking station 310.

[0034] The off-hook/pulse sensor 430 is further configured to detect dialing from POTS devices 140, 150 (FIG. 2) that are configured for pulse dialing. Since pulse dialing emulates rapid sequential off-hook signals, the off-hook/pulse sensor 430 receives pulses (i.e., the rapid sequential off-hook signals) and produces a sequence of off-hook signals 435 or pulse-dialing signals. The sequence of off-hook signals 435 is relayed to the processor 410, which converts the sequence of off-hook signals into signaling data on signaling line 355 that is indicative of the dialed number. The signaling data on signaling line 355 is transmitted from the processor 410 to the cellular telephone 305 through the cellular phone docking station 310. The cellular telephone 305, after receiving the signaling data on signaling line 355, dials the number indicated by the signaling data on signaling line 355, thereby permitting phone calls by the POTS devices 140, 150 (FIG. 2) through the cellular network. In one illustrative embodiment, the numbers dialed by the POTS devices 140, 150 (FIG. 2) are stored in RAM 460, and, once a predetermined number of dialed numbers has been stored, the processor 410 conveys the stored numbers and a "send" command to the cellular telephone. In other words, upon receiving enough digits to dial a telephone number, as indicated by the configuration information in SRAM 450, the processor 410 commands the cellular telephone 305 to dial the outgoing number, thereby connecting a call from the POTS device 140, 150 (FIG. 2) through the cellular network. In another illustrative embodiment, the RAM stores numbers as they are dialed by the POTS devices 140, 150 (FIG. 2). If, during dialing, the processor 410 detects a delay or a pause, then the processor 410 presumes that all of the digits of the telephone number have been dialed. Thus, the processor 410 commands the cellular telephone 305 to dial the outgoing number, thereby connecting the call from the POTS device 140, 150 (FIG. 2) through the cellular network.

[0035] The DTMF decoder 420 is configured to detect dialing from POTS devices 140, 150 (FIG. 2) that are configured for DTMF or "tone" dialing. The DTMF decoder 420 receives a tone, which represent a number, through the two-conductor pair 130n. After receiving the tone, the DTMF decoder 420 generates a DTMF-dialing signal 425 that is indicative of the number that was dialed. The DTMF-dialing signal 425 is then transmitted to the processor 410, which converts the DTMF-dialing signal 425 into signaling data on signaling line 355 that is indicative of the number that was dialed. The signaling data on signaling line 355 is transmitted from the processor 410 to the cellular telephone

305 through the cellular phone docking station **310**. The cellular telephone **305** subsequently dials the number indicated by the signaling data on signaling line **355**, thereby allowing the POTS device **140, 150 (FIG. 2)** to make a call using the cellular network.

[0036] It can be seen, from **FIGS. 2 through 4**, that the various illustrative embodiments of the system will permit the interfacing of POTS devices **140, 150 (FIG. 2)** with a cellular network. Specifically, in one illustrative embodiment, POTS devices **140, 150 (FIG. 2)** are interfaced with the cellular network through a cellular telephone **305 (FIG. 3)**, which is attached to the interface **240** at a cellular phone docking station **310**. In addition to the various systems, as described above, another illustrative embodiment of the invention may be seen as a method for interfacing POTS devices **140, 150 (FIG. 2)** with cellular networks. Several illustrative embodiments of the method are described with reference to **FIGS. 5 through 12** below.

[0037] **FIG. 5** is a flowchart showing one illustrative embodiment of the method for interfacing POTS devices with cellular networks. In a broad sense, once a POTS device **140, 150 (FIG. 2)** has been coupled to a cellular telephone **305 (FIG. 3)** through an interface **240 (FIG. 2)**, this illustrative embodiment may be seen as converting, in step **530**, cellular network compatible signals from the cellular telephone **305 (FIG. 3)** to POTS compatible signals, and converting, in step **540**, POTS compatible signals from the POTS devices **140, 150 (FIG. 2)** to cellular network compatible signals. In a preferred illustrative embodiment, the converting steps **530, 540** are performed at the interface **240**.

[0038] **FIGS. 6A and 6B** are flowcharts showing one illustrative embodiment of the method associated with the conversion **530** of cellular network compatible signals to POTS compatible signals. As an initial matter, the cellular network compatible signals are received through the cellular telephone **305 (FIG. 3)**. Thus, in step **610**, the system receives an incoming call through the cellular telephone **305 (FIG. 3)**. Once the incoming call is received **610**, the system further receives, in step **620**, an analog-audio signal **345 (FIG. 3)** indicative of the incoming call from the cellular telephone **305 (FIG. 3)**. The received analog-audio signal **345 (FIG. 3)** is then transmitted, in step **630**, to an interface controller **370 (FIG. 3)**. The interface controller **370 (FIG. 3)** generates, in step **640**, a ring tone in response to receiving the analog-audio signal **345 (FIG. 3)**. In a preferred illustrative embodiment, the ring tone is generated **640** by a tone generator **375 (FIG. 3)**. The generated **640** ring tone is conveyed, in step **650**, to the POTS devices **140, 150 (FIG. 2)**, and, when the POTS device **140, 150 (FIG. 2)** is "picked up," an off-hook signal is generated, in step **660**, and conveyed, in step **670**, to the interface controller **370 (FIG. 3)**. This triggers the interface controller **370 (FIG. 3)** to activate the audio relay **365 (FIG. 3)**, and analog-audio signals **345 (FIG. 3)** are exchanged, in step **680**, between the POTS devices **140, 150 (FIG. 2)** and the cellular telephone **305 (FIG. 3)** through the audio relay **365 (FIG. 3)**. Thus, in this illustrative embodiment, once the incoming call is connected between the cellular telephone **305 (FIG. 3)** and the POTS device **140, 150 (FIG. 2)**, the POTS device **140, 150 (FIG. 2)** freely communicates through the cellular network.

[0039] **FIGS. 7A and 7B** are flowcharts showing another illustrative embodiment of the method associated with the conversion **530** of cellular network compatible signals to POTS compatible signals. Similar to **FIGS. 7A and 7B**, the cellular network compatible signals here are received through the cellular telephone **305 (FIG. 3)**. Thus, in step **710**, the system receives an incoming call through the cellular telephone **305 (FIG. 3)**. However, unlike the illustrative embodiment of **FIGS. 6A and 6B**, once the incoming call is received **710**, the system generates, in step **720**, signaling data on signaling line **355 (FIG. 3)** indicative of the incoming call from the cellular telephone **305 (FIG. 3)**. The generated **720** signaling data on signaling line **355 (FIG. 3)** is then conveyed, in step **730**, to an interface controller **370 (FIG. 3)**. The interface controller **370 (FIG. 3)** generates, in step **740**, a ring tone in response to signaling data on signaling line **355 (FIG. 3)**. In a preferred illustrative embodiment, the ring tone is generated **740** by a tone generator **375 (FIG. 3)**. The generated **740** ring tone is conveyed, in step **750**, to the POTS devices **140, 150 (FIG. 2)**, and, when the POTS device **140, 150 (FIG. 2)** is "picked up," an off-hook signal is generated, in step **760**, and conveyed, in step **770**, to the interface controller **370 (FIG. 3)**. This triggers the interface controller **370 (FIG. 3)** to activate the audio relay **365 (FIG. 3)**, and analog-audio signals **345 (FIG. 3)** are exchanged, in step **780**, between the POTS devices **140, 150 (FIG. 2)** and the cellular telephone **305 (FIG. 3)** through the audio relay **365 (FIG. 3)**. Thus, in this illustrative embodiment, once the incoming call is connected between the cellular telephone **305 (FIG. 3)** and the POTS device **140, 150 (FIG. 2)**, the POTS device **140, 150 (FIG. 2)** freely communicates through the cellular network.

[0040] **FIG. 8** is a flowchart showing several steps associated with the conversion **540** of POTS compatible signals to cellular network compatible signals. As described above, the interface **240 (FIG. 2)** is configured to allow outgoing calls using either pulse-dialing or "tone" dialing. The method steps associated with pulse-dialing are different from the method steps associated with "tone" dialing. However, regardless of which type of dialing is employed, both methods share several of the initial steps. **FIG. 8** describes the shared initial steps associated with an outgoing call from a POTS device **140, 150 (FIG. 2)** through the cellular network. When a user "picks up" the phone **140 (FIG. 2)** to place an outgoing call, the system detects, in step **810**, an off-hook signal at the off-hook/pulse detector **430 (FIG. 4)**. The system then generates, in step **820**, a dial tone in response to the detected off-hook signal. In an illustrative embodiment, the dial tone is generated **820** by the tone generator **375 (FIG. 3)**. The generated **820** dial tone is conveyed, in step **830**, to the POTS device **140, 150 (FIG. 2)** (i.e., to the person that is placing the outgoing call) to indicate that the system is ready for dialing. In addition to generating **820** the dial tone, the system further generates, in step **840**, signaling data on signaling line **355 (FIG. 3)** that is indicative of the POTS device **140, 150 (FIG. 2)** being off-hook. The generated **840** signaling data on signaling line **355 (FIG. 3)** is then conveyed, in step **850**, to the cellular telephone **305 (FIG. 3)**, either with or without modification, through the cellular phone docking station **310 (FIG. 3)**, thereby indicating to the cellular telephone **305 (FIG. 3)** that a user has "picked up" the phone **140 (FIG. 2)**, and that an outgoing call may be initiated. Thus, in one illustrative

embodiment, once the cellular phone **305** (FIG. 3) receives the indication that the user has “picked up” the phone **140** (FIG. 2), the cellular telephone **305** (FIG. 3) blocks incoming calls. Hence, at this point, the system is ready for either pulse dialing or “tone” dialing. In another illustrative embodiment, the step of generating **840** signaling data on signaling line **355** (FIG. 3) may be completely.

[0041] FIGS. 9 and 10 are flowcharts showing several illustrative embodiments of the method associated with pulse dialing. As shown in FIG. 9, in one illustrative embodiment, the off-hook/pulse sensor **430** (FIG. 4) detects, in step **910**, a pulse-dialing signal that is indicative of a pulse-dialed number. In response to the pulse-dialing signal, the processor **410** (FIG. 4) generates, in step **920**, signaling data on signaling line **355** (FIG. 3) that is indicative of the pulse-dialed number and a “send” command. The signaling data on signaling line **355** (FIG. 3) is conveyed, in step **930**, to the cellular telephone **305** (FIG. 3), either with or without modification (e.g., amplification or attenuation), by the processor **410** (FIG. 4) through the cellular phone docking station **310** (FIG. 3).

[0042] In one illustrative embodiment, the numbers dialed by the POTS devices **140, 150** (FIG. 2) are stored in RAM **460**, and, once a predetermined number of dialed numbers has been stored, the processor **410** (FIG. 4) conveys the stored numbers and a “send” command to the cellular telephone **305** (FIG. 3). In other words, upon receiving enough digits to dial a telephone number, as indicated by the configuration information in SRAM **450** (FIG. 4), the processor **410** (FIG. 4) commands the cellular telephone **305** (FIG. 3) to dial the outgoing number, thereby connecting a call from the POTS device **140, 150** (FIG. 2) through the cellular network. In another illustrative embodiment, the RAM **460** (FIG. 4) stores numbers as they are dialed by the POTS devices **140, 150** (FIG. 2). If, during dialing, the processor **410** (FIG. 4) detects a delay or a pause, then the processor **410** (FIG. 4) presumes that all of the digits of the telephone number have been dialed. Thus, the processor **410** (FIG. 4) commands the cellular telephone **305** to dial the outgoing number, thereby connecting the call from the POTS device **140, 150** (FIG. 2) through the cellular network. The command instructs the cellular telephone **305** (FIG. 3) to call the number that has been conveyed to the cellular telephone **305** (FIG. 3) by the signaling data on signaling line **355** (FIG. 3).

[0043] When the called party “picks up” the phone, the system detects, in step **940**, an analog-audio signal **345** (FIG. 3) that is indicative of the connected call. At this point, the processor **410** (FIG. 4) enables the audio relay **365** (FIG. 3), and analog-audio signals **345** (FIG. 3) are exchanged, in step **950**, between the POTS device **140, 150** (FIG. 2) and the cellular telephone **305** (FIG. 3). Thus, once the outgoing call is connected between the cellular telephone **305** (FIG. 3) and the POTS device **140, 150** (FIG. 2), the POTS device **140, 150** (FIG. 2) freely communicates through the cellular network.

[0044] In another illustrative embodiment, rather than waiting for the called party to “pick up” the phone, the system detects an analog-audio signal **345** (FIG. 3) that is indicative of a called-party telephone ringing or a called-party telephone being “busy.” At this point, the processor **410** (FIG. 4) enables the audio relay **365** (FIG. 3), and

analog-audio signals **345** (FIG. 3) are exchanged between the POTS device **140, 150** (FIG. 2) and the cellular telephone **305** (FIG. 3). Thus, once a called-party telephone ringing or a called-party telephone “busy” signal is detected, the cellular telephone **305** (FIG. 3) and the POTS device **140, 150** (FIG. 2) are connected through the cellular network.

[0045] FIG. 10 is a flowchart showing, in greater detail, another illustrative embodiment of the method associated with pulse dialing. As shown in FIG. 10, the off-hook/pulse sensor **430** (FIG. 4) detects, in step **910**, a pulse-dialing signal that is indicative of a pulse-dialed number. In response to the pulse-dialing signal, the processor **410** (FIG. 4) generates, in step **920**, signaling data on signaling line **355** (FIG. 3) that is indicative of the pulse-dialed number. The signaling data on signaling line **355** (FIG. 3) is conveyed, in step **930**, to the cellular telephone **305** (FIG. 3), either with or without modification, by the processor **410** (FIG. 4) through the cellular phone docking station **310** (FIG. 3). This instructs the cellular telephone **305** (FIG. 3) to call the number that has been conveyed to the cellular telephone **305** (FIG. 3) by the signaling data on signaling line **355** (FIG. 3). When the called party “picks up” the phone, the cellular telephone **305** (FIG. 3) generates signaling data on signaling line **355** (FIG. 3) that is indicative of the connected call, and the processor detects, in step **1040**, the signaling data on signaling line **355** (FIG. 3). At this point, the processor **410** (FIG. 4) enables the audio relay **365** (FIG. 3), and analog-audio signals **345** (FIG. 3) are exchanged, in step **950**, between the POTS device **140, 150** (FIG. 2) and the cellular telephone **305** (FIG. 3). Thus, again, the POTS device **140, 150** (FIG. 2) freely communicates through the cellular network.

[0046] In another illustrative embodiment, rather than waiting for the called party to “pick up” the phone, the system detects an analog-audio signal **345** (FIG. 3) that is indicative of a called-party telephone ringing or a called-party telephone being “busy.” At this point, the processor **410** (FIG. 4) enables the audio relay **365** (FIG. 3), and analog-audio signals **345** (FIG. 3) are exchanged between the POTS device **140, 150** (FIG. 2) and the cellular telephone **305** (FIG. 3). Thus, once a called-party telephone ringing or a called-party telephone “busy” signal is detected, the cellular telephone **305** (FIG. 3) and the POTS device **140, 150** (FIG. 2) are connected through the cellular network.

[0047] FIGS. 11 and 12 are flowcharts showing several illustrative embodiments of the method associated with “tone” dialing. As shown in FIG. 11, in one illustrative embodiment, the DTMF decoder **420** (FIG. 4) detects, in step **1110**, a DTMF signal that is indicative of a DTMF-dialed number. In response to the DTMF signal, the processor **410** (FIG. 4) generates, in step **1120**, signaling data on signaling line **355** (FIG. 3) that is indicative of the DTMF-dialed number. The signaling data on signaling line **355** (FIG. 3) is conveyed, in step **1130**, to the cellular telephone **305** (FIG. 3), either with or without modification, by the processor **410** (FIG. 4) through the cellular phone docking station **310** (FIG. 3). This instructs the cellular telephone **305** (FIG. 3) to call the number that has been conveyed to the cellular telephone **305** (FIG. 3) by the signaling data on signaling line **355** (FIG. 3). When the called party “picks up” the phone, the system detects, in step **1140**, an analog-

audio signal **345** (**FIG. 3**) that is indicative of the connected call. At this point, the processor **410** (**FIG. 4**) enables the audio relay **365** (**FIG. 3**), and analog-audio signals **345** (**FIG. 3**) are exchanged, in step **1150**, between the POTS device **140, 150** (**FIG. 2**) and the cellular telephone **305** (**FIG. 3**). Thus, once the incoming call is connected between the cellular telephone **305** (**FIG. 3**) and the POTS device **140, 150** (**FIG. 2**), the POTS device **140, 150** (**FIG. 2**) freely communicates through the cellular network.

[**0048**] **FIG. 12** is a flowchart showing another illustrative embodiment of the method associated with “tone” dialing. As shown in **FIG. 12**, the DTMF decoder **420** (**FIG. 4**) detects, in step **1110**, a DTMF signal that is indicative of a DTMF-dialed number. In response to the DTMF signal, the processor **410** (**FIG. 4**) generates, in step **1120**, signaling data on signaling line **355** (**FIG. 3**) that is indicative of the DTMF-dialed number. The signaling data on signaling line **355** (**FIG. 3**) is conveyed, in step **1130**, to the cellular telephone **305** (**FIG. 3**), either with or without modification, by the processor **410** (**FIG. 4**) through the cellular phone docking station **310** (**FIG. 3**). This instructs the cellular telephone **305** (**FIG. 3**) to call the number that has been conveyed to the cellular telephone **305** (**FIG. 3**) by the signaling data on signaling line **355** (**FIG. 3**). When the called party “picks up” the phone, the cellular telephone **305** (**FIG. 3**) generates signaling data on signaling line **355** (**FIG. 3**) that is indicative of the connected call, and the processor detects, in step **1240**, the signaling data on signaling line **355** (**FIG. 3**). At this point, the processor **410** (**FIG. 4**) enables the audio relay **365** (**FIG. 3**), and analog-audio signals **345** (**FIG. 3**) are exchanged, in step **1150**, between the POTS device **140, 150** (**FIG. 2**) and the cellular telephone **305** (**FIG. 3**). Thus, again, the POTS device **140, 150** (**FIG. 2**) freely communicates through the cellular network.

[**0049**] While several hardware components are shown with reference to **FIGS. 3 and 4** to describe the interface controller **370**, it will be clear to one of ordinary skill in the art that the interface controller **370** may be implemented in hardware, software, firmware, or a combination thereof. In one illustrative embodiment, the interface controller **370** (**FIG. 3**) is implemented in software or firmware that is stored in a memory and that is executed by a suitable instruction execution system. If implemented in hardware, as in **FIGS. 3 and 4**, the interface controller may be implemented with any or a combination of the following technologies: a discrete logic circuit having logic gates for implementing logic functions upon data signals, an application specific integrated circuit (ASIC) having appropriate combinational logic gates, a programmable gate array (PGA), a field programmable gate array (FPGA), etc.

[**0050**] **FIG. 13** is a block diagram showing an alternative illustrative embodiment of the interface **240** of **FIG. 3**. As described above in the discussion of the illustrative embodiment of **FIG. 3**, the cellular network compatible signals are transmitted and received at the interface **240** by a cellular telephone **305** while the POTS compatible signals are transmitted and received at the interface **240** through a POTS connector **380**, such as an RJ11 connector **380**. As described above with respect to **FIG. 3**, the interface **240** in this illustrative embodiment comprises a cellular telephone docking station **310**, including locking arms **390**, that is configured to interface with the cellular telephone **305**, an

interface controller **370**, a power supply **335**, a speaker **1315**, and a home security system **1350**.

[**0051**] The cellular telephone docking station **310** is configured to convey signaling data, received from the interface controller **370** over the signaling line **355**, to the cellular telephone **305**. In the presently described illustrative embodiment, the signaling data on the signaling line **355** may include a DTMF-dialing signal indicative of a dialed number sequence, such as a telephone number from the POTS devices **140, 150**. The cellular telephone docking station **310** also includes a location device, such as global positioning system (GPS) receiver **1325**, for receiving location data from the cellular telephone **305**. It will be appreciated that in the presently described illustrative embodiment, the cellular telephone **305** may be configured with a GPS or other location receiver which continuously or at predetermined intervals, transmits the current location of the cellular telephone **305**. Those of ordinary skill in the art will appreciate that the cellular telephone docking station **310** may also be outfitted with a physical or electronic lock for preventing the removal of the cellular telephone **305**.

[**0052**] The current location of the cellular telephone **305** may be obtained through communication with, for example, a GPS satellite or a land based navigation system. The cellular telephone **305** may also be capable of determining its location utilizing a cellular triangulation method well known to those of ordinary skill in the art. The cellular telephone **305** may also include a transmitter capable of transmitting its current location data or position information to the receiver **1325** in the cellular telephone docking station **310**. The cellular telephone **305** may be programmed to execute various algorithms for determining, storing, and communicating the position information. Illustrative methods detailing the aforementioned algorithms, and others, for locating and tracking wireless devices is presented in U.S. Patent Application Publication No. US2003/0117316, entitled “Systems and Methods for Locating and Tracking a Wireless Device,” published on Jun. 26, 2003, and assigned to the same assignee as this application, which is expressly incorporated herein, in its entirety, by reference.

[**0053**] The cellular telephone docking station **310** is also connected to the speaker **1315** and is capable of generating signaling over signaling line **355A** for sounding an audible alarm when the cellular telephone has been moved outside of a predetermined range. For instance, when the cellular telephone docking station **310** detects, based on received location data at the receiver **1325**, that the cellular telephone **305** is more than three feet away from its position in the docking station **310**, the docking station **310** may be configured to generate an audio signal over the signaling line **355A** to sound an audible alarm over the speaker **1315**. Persons of ordinary skill in the art will appreciate that the cellular telephone docking station **310** may be configured to incorporate Ultra Wide Band (UWB) wireless communications technology to actively determine and monitor the distance the cellular telephone **305** is away from the docking station **310**. Persons of ordinary skill in the art will further appreciate that the docking station **310** may also be configured with a memory and a processor for executing programmed instructions for setting the predetermined range of the cellular telephone **305** and generating the signaling necessary to sound the audible alarm over the speaker **1315**. The cellular telephone docking station **310** may also be

connected to the home security system **1350** over a signaling line **355B**. The cellular telephone docking station **310** may be configured to generate signaling over the signaling line **355B** to the home security system **1350** indicating that the cellular telephone **305** has been moved out of the predetermined range. An illustrative method detailing the restriction of the movement of the cellular telephone **305** from the docking station **310** will be discussed in greater detail with respect to **FIG. 15**, below.

[**0054**] The interface controller **370** is configured to convey signaling data indicative of a dialed number sequence to the cellular telephone **305** through the cellular telephone docking station **310**. The interface controller **370** includes the DTMF decoder **420**, the ROM **440**, the RAM **460**, and the processor **410** discussed above with respect to **FIG. 4**. The DTMF decoder **420** (**FIG. 4**) generates a dialing signal corresponding to a dialed number sequence initiated from the POTS devices **140**, **150**.

[**0055**] As discussed above with respect to **FIG. 4**, the DTMF decoder **420** is configured to detect dialing from POTS devices **140**, **150** that are configured for DTMF or "tone" dialing. The DTMF decoder **420** (**FIG. 4**) generates a DTMF-dialing signal of the number that was dialed and transmits the signal to the processor **410** (**FIG. 4**), which converts the DTMF-dialing signal into signaling data on the signaling line **355** that is indicative of the number that was dialed. During normal operation, the signaling data on the signaling line **355** is transmitted from the processor **410** (**FIG. 4**) to the cellular telephone **305** through the cellular phone docking station **310**. The cellular telephone **305** subsequently dials the number indicated by the signaling data on the signaling line **355**, thereby allowing the POTS device **140**, **150** to make a call using the cellular network **1320**.

[**0056**] The interface controller **370** also includes an allowed number database **1317** which may be stored in the ROM **440** (**FIG. 4**). The allowed number database **1317** includes a sequence list which may include telephone numbers or area codes. The numbers in the sequence list may be used to restrict the dialing of telephone numbers from the POTS devices **140**, **150** when using the cellular telephone **305** as a bridge for making telephone calls using the cellular network **1320**, as discussed in the description of **FIGS. 5-12**, above. For example, the sequence list may only include local area codes to prevent the dialing of long distance numbers from the POTS devices **140**, **150**. An illustrative method detailing the restriction of the use of the cellular telephone **305** and the POTS devices **140**, **150** will be discussed in greater detail with respect to **FIG. 14**, below.

[**0057**] The power supply **335** is configured to provide the components of the interface **240** with the requisite power. In this sense, the power supply **335** is connected to an external power supply **330** from which it receives external power. The external power is converted by the power supply **335** to a DC voltage, which is used to power the cellular phone docking station **310**, the tone generator **375**, the interface controller **370**, the speaker **1315**, and any other device in the interface **240** that may be powered by a DC source.

[**0058**] The locking arms **390** may be configured to function as a lock to hold the cellular telephone **305** in the docking station **310** such that the cellular telephone **305** may not be removed. Those skilled in the art will appreciate that

the locking arms **390** may comprise electromagnetically-actuated bars for holding the sides of the cellular telephone **305** when the lock is actuated. It will be appreciated that the docking station **310** may also comprise a lockable box (not shown) with a cover for physically locking the cellular telephone **305**. It will be appreciated that other means for locking the cellular telephone **305** to the docking station **310** will be readily apparent to those skilled in the art.

[**0059**] **FIG. 14** is a flowchart showing an illustrative embodiment of a method for restricting the use of the POTS devices **140**, **150** over the cellular network **1320**. As shown in **FIG. 14**, the processor **410** (**FIG. 4**) in the interface controller **370** detects, at step **1410**, a dialed telephone number in the DTMF-dialing signal received from the DTMF decoder **420** (**FIG. 4**). The processor **410** then, at step **1420**, compares the numerical sequence in the telephone number to the list of numbers in the allowed number database **1317**. In particular, the telephone number or a portion thereof (such as the area code) is compared to a list of allowed telephone numbers or area codes specified by a user in the list.

[**0060**] If, at step **1420**, the telephone number (or portion thereof such as the area code) in the received DTMF-dialing signal matches a numerical sequence in the database **1317**, then the processor **410** transmits, at step **1430**, the DTMF-dialing signal to the cellular telephone docking station **310** for dialing on the cellular telephone **305**. If however, at step **1420**, the telephone number (or portion thereof such as the area code) in the received DTMF-dialing signal does not match a numerical sequence in the database **1317**, then the processor **410** does not transmit the DTMF-dialing signal to the cellular telephone docking station **310** (thereby preventing the call from being made) and generates, at step **1440**, a telephone call to a predetermined telephone number indicating an attempt was made to dial an unauthorized telephone number. In particular, the interface controller **370** may be configured generate a dialing signal indicative of the predetermined telephone number utilizing the processor **410** (**FIG. 4**) and the tone generator **375** (**FIG. 4**) to place a telephone call, utilizing the POTS lines **130** and **130a** connected to the RJ11 connector **380**, over the PSTN **1335**. It will be appreciated that the processor **410** (**FIG. 4**) may be programmed to only access the allowed number database during a predetermined time period. For instance, the allowed number database may only be accessed during working hours on weekdays when the subscriber is away from home and unable to actively monitor unauthorized calls.

[**0061**] **FIG. 15** is a flowchart showing an illustrative embodiment of a method for restricting the movement of the cellular telephone **305** from the cellular telephone docking station **310**. As shown in **FIG. 15**, the docking station **310** receives, at step **1510**, current location data from the cellular telephone **305** at the receiver **1325**. The docking station **310** then determines, at step **1520**, if the cellular telephone **305** is greater than a predetermined distance from the docking station **310**.

[**0062**] If, at step **1520**, the location data indicates that the cellular telephone **305** is located within the predetermined distance, then the method returns to step **1510** where the docking station continues to receive location data from the cellular telephone **305**. If however, at step **1520**, the location

data indicates that the cellular telephone **305** is located outside of the predetermined distance, then the docking station **310** generates, at step **1530**, an alert indicating unauthorized movement of the cellular telephone **305**. In particular, the docking station **310** may generate an alarm signal on the signaling line **355A** to emit an audible alert over the connected speaker **1315**. Alternatively, the docking station **310** may generate a signal on the signaling line **355B** to the home security system **1350** which could also emit an alarm.

[0063] The docking station **310** may also lock, at **1540**, the cellular telephone **305** once it has been detected outside of the predetermined range. In particular, the interface controller **370** may be configured to generate a jamming signal over the signaling line **355** thereby causing the tuned antenna **320** connected to the docking station **310** to send out an interference signal, such as a 900 Mhz/1900 Mhz signal, to the cellular telephone **305**, thereby jamming communication between the cellular telephone **305** and the cellular network **1320**. Various jamming methods which may be utilized in illustrative embodiments of the invention are well known to those skilled in the art.

[0064] While illustrative embodiments of the present invention have been shown and described, it will be apparent to those of ordinary skill in the art that a number of changes, modifications, or alterations to the invention as described may be made, none of which depart from the spirit of the present invention. For example, while a cellular telephone **305** (FIG. 13) is used as the bridge between the POTS devices **140**, **150** and the cellular network, it will be clear to one of ordinary skill in the art that any cellular device may be used as the bridge, such as a cellular compatible personal digital assistant (PDA), cellular modem, or any other cellular device that is configured to transmit and receive data from a cellular network. Furthermore, while the flowcharts of FIGS. 14-15 show several illustrative embodiments of the method as being performed in sequential order, it will be clear to one of ordinary skill in the art that several of the method steps may be taken out of order without adverse effect to the invention. For example, the step of locking the cellular telephone in FIG. 15 may be performed prior to the step of generating the alert indicating unauthorized movement or the step may be completely removed without detriment to the invention. These and other such changes, modifications, and alterations should therefore be seen as within the scope of the present invention.

We claim:

1. A system for restricting the use of a telephony device with a communications network, comprising:

an interface configured to detect a dialed sequence of numbers entered into the telephony device, wherein the interface is further configured to prevent the telephony device from communicating with the communications network when the dialed sequence matches a restricted sequence of numbers stored in the interface; and

at least one device connector configured to couple the telephony device to the interface.

2. The system of claim 1, wherein the interface comprises an interface controller configured to convey signaling to the telephony device and receive signaling from the telephony device.

3. The system of claim 2, wherein the interface comprises a DTMF decoder, wherein the DTMF decoder is configured to detect the dialed sequence and wherein the DTMF decoder is further configured to generate a DTMF-dialing signal indicative of the dialed sequence.

4. The system of claim 3, wherein the interface further comprises a docking station configured to convey the DTMF-dialing signal indicative of the dialed sequence generated by the DTMF decoder.

5. The system of claim 4, wherein the interface controller further comprises a processor, wherein the processor is configured:

to receive the DTMF-dialing signal indicative of the dialed sequence from the DTMF decoder;

compare the sequence to a stored sequence list in the interface controller; and

transmit the DTMF-dialing signal indicative of the dialed sequence to the docking station.

6. The system of claim 5, wherein the processor transmits the DTMF-dialing signal indicative of the dialed sequence to the docking station if the dialed sequence matches a stored sequence in the stored sequence list.

7. The system of claim 5, wherein the processor does not transmit the DTMF-dialing signal indicative of the dialed sequence to the docking station if the dialed sequence does not match a stored sequence in the stored sequence list.

8. The system of claim 7, wherein the interface controller is further configured to generate a telephone call over the communications network if the dialed sequence does not match a stored sequence in the stored sequence list.

9. The system of claim 4, wherein the interface further comprises a cellular telephone configured to receive the DTMF-dialing signal from the docking station.

10. The system of claim 1, wherein the dialed sequence comprises a telephone number.

11. The system of claim 1, wherein the stored sequence comprises an area code.

12. The system of claim 1, wherein the stored sequence comprises at least one telephone number.

13. The system of claim 1, wherein the telephony device is a plain old telephone system (POTS) telephone.

14. A method for restricting the use of a telephony device with a communications network, comprising:

detecting a dialed sequence of numbers entered into the telephony device; and preventing the telephony device from communicating with the communications network when the dialed sequence does not match an allowed sequence of numbers stored in an interface.

15. The method of claim 14 wherein detecting a dialed sequence of numbers entered into a telephony device comprises detecting a DTMF-dialing signal indicative of the dialed sequence.

16. The method of claim 15 further comprising enabling the telephony device to communicate with the communications network when the dialed sequence matches the allowed sequence of numbers stored in the interface.

17. The method of claim 15, wherein preventing the telephony device from communicating with the communications network when the dialed sequence does not match an allowed sequence of numbers stored in an interface comprises:

comparing the dialed sequence to a stored sequence list in the interface, the stored sequence list comprising the allowed sequence of numbers; and

if the dialed sequence does not match a sequence of numbers in the sequence list, then preventing the transmission of the DTMF-dialing signal indicative of the dialed sequence.

18. The method of claim 16, wherein preventing the telephony device from communicating with the communications network when the dialed sequence matches the allowed sequence of numbers stored in the interface comprises:

comparing the dialed sequence to a stored sequence list in the interface, the stored sequence list comprising the allowed sequence of numbers; and

if the dialed sequence matches the sequence of numbers in the sequence list, then transmitting the DTMF-dialing signal indicative of the dialed sequence.

19. The method of claim 17, further comprising generating a telephone call over the communications network if the dialed sequence does not match a stored sequence in the stored sequence list.

20. The method of claim 14, wherein the dialed sequence comprises a telephone number.

21. The method of claim 14, wherein the stored sequence comprises an area code.

22. The method of claim 14, wherein the stored sequence comprises at least one telephone number.

23. The method of claim 1, wherein the telephony device is a plain old telephone system (POTS) telephone.

24. A system for restricting the movement of a mobile telephony device, comprising:

a mobile telephony device configured for communication with a communications network; and

an interface configured to receive location data indicative of a current location of the mobile telephony device, wherein the interface is further configured to generate an alert when the current location of the mobile telephony device is greater than a predetermined distance from the interface.

25. The system of claim 24, wherein the interface comprises a docking station and wherein the docking station comprises a receiver configured to receive the location data indicative of a current location of the telephony device.

26. The system of claim 25, wherein the alert is an audible alarm emitted from the interface.

27. The system of claim 24, wherein the alert is a telephone call over the communications network to a predetermined telephone number.

28. The system of claim 25, wherein the docking station is configured to lock the mobile telephony device when the current location of the mobile telephony device is greater than a predetermined distance from the docking station.

29. The system of claim 24 wherein the location data is Global Positioning System data.

30. A method for restricting the movement of a mobile telephony device, comprising:

receiving location data indicative of a current location of the mobile telephony device; and

generating an alert when the current location of the mobile telephony device is greater than a predetermined distance from an interface.

31. The method of claim 30 further comprising locking the mobile telephony device when the current location of the mobile telephony device is greater than the predetermined distance from the interface.

32. The method of claim 30, wherein the alert is an audible alarm emitted from the interface.

33. The method of claim 30, wherein the alert is a telephone call over the communications network to a predetermined telephone number.

34. The method of claim 30 wherein the location data is Global Positioning System data.

35. A computer-readable medium having computer-executable instructions stored thereon which, when executed by a computer, will cause the computer to perform a method for restricting the use of a telephony device with a communications network, the method comprising:

detecting a dialed sequence of numbers entered into the telephony device; and

preventing the telephony device from communicating with the communications network when the dialed sequence does not match an allowed sequence of numbers stored in an interface.

36. The computer-readable medium of claim 35 wherein detecting a dialed sequence of numbers entered into a telephony device comprises detecting a DTMF-dialing signal indicative of the dialed sequence.

37. The computer-readable medium of claim 36 further comprising enabling the telephony device to communicate with the communications network when the dialed sequence matches the allowed sequence of numbers stored in the interface.

38. The computer-readable medium of claim 36, wherein preventing the telephony device from communicating with the communications network when the dialed sequence does not match an allowed sequence of numbers stored in an interface comprises:

comparing the dialed sequence to a stored sequence list in the interface, the stored sequence list comprising the allowed sequence of numbers; and

if the dialed sequence does not match a sequence of numbers in the sequence list, then preventing the transmission of the DTMF-dialing signal indicative of the dialed sequence.

39. The computer-readable medium of claim 37, wherein preventing the telephony device from communicating with the communications network when the dialed sequence matches the allowed sequence of numbers stored in the interface comprises:

comparing the dialed sequence to a stored sequence list in the interface, the stored sequence list comprising the allowed sequence of numbers; and

if the dialed sequence matches the sequence of numbers in the sequence list, then transmitting the DTMF-dialing signal indicative of the dialed sequence.

40. The computer-readable medium of claim 38 further comprising generating a telephone call over the communications network if the dialed sequence does not match a stored sequence in the stored sequence list.

41. A computer-readable medium having computer-executable instructions stored thereon which, when executed by a computer, will cause the computer to perform a method for restricting the movement of a mobile telephony device, comprising:

receiving location data indicative of a current location of the mobile telephony device; and

generating an alert when the current location of the mobile telephony device is greater than a predetermined distance from an interface.

42. The computer-readable medium of claim 41 further comprising locking the mobile telephony device when the current location of the mobile telephony device is greater than the predetermined distance from the interface.

* * * * *