

[54] DROP AXLE FOR TOWED VEHICLES SUCH AS BOAT AND UTILITY TRAILERS

[76] Inventor: Millford F. Marti, 4001 Devon, Huntsville, Ala. 35802

[\*\*] Term: 14 Years

[21] Appl. No.: 832,278

[22] Filed: Sep. 12, 1977

[51] Int. Cl. .... D12—16

[52] U.S. Cl. .... D12/160

[58] Field of Search ..... D12/160; 301/124 R, 301/127, 129

[56] References Cited

U.S. PATENT DOCUMENTS

1,226,867 5/1917 Dempsey ..... 301/127

FOREIGN PATENT DOCUMENTS

2361009 6/1975 Fed. Rep. of Germany ..... 301/127

Primary Examiner—James M. Gandy  
Attorney, Agent, or Firm—C. A. Phillips

[57] CLAIM

The ornamental design for a drop axle for towed vehicles such as boat and utility trailers, substantially as shown and described.

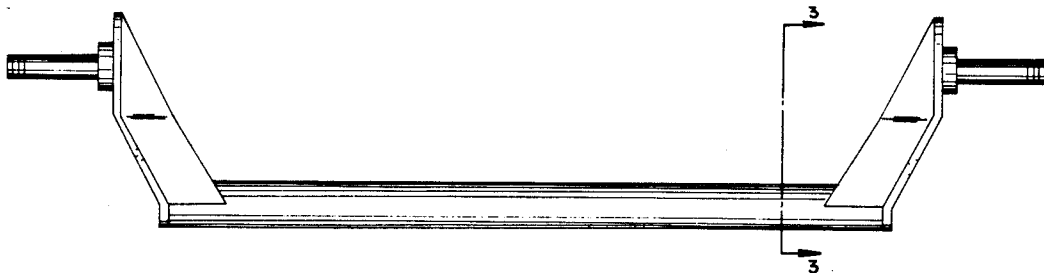
DESCRIPTION

FIG. 1 is a side elevational view of a drop axle for towed vehicles such as boat and utility trailers showing my new design, the opposite side being a mirror image thereof.

FIG. 2 is an enlarged fragmentary bottom perspective view of one end thereof.

FIG. 3 is an enlarged sectional view thereof taken along line 3—3 of FIG. 1.

FIG. 4 is an enlarged fragmentary top plan view of one end thereof.



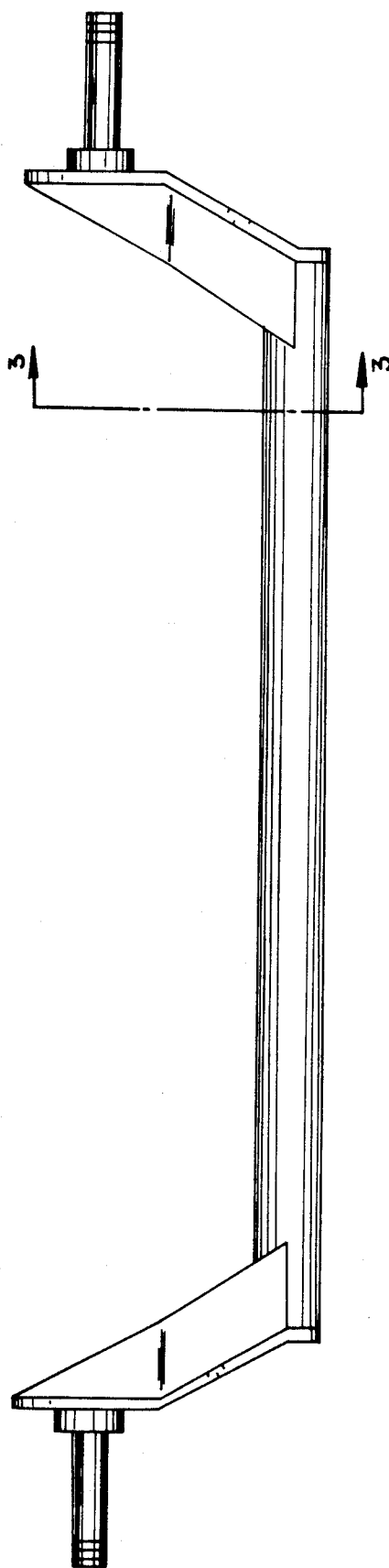


FIG. 1

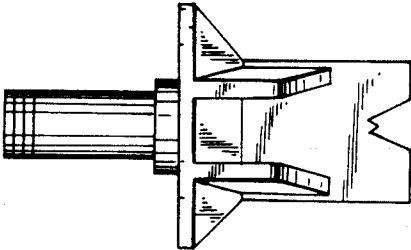


FIG. 4

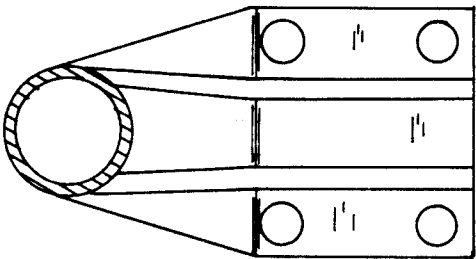


FIG. 3

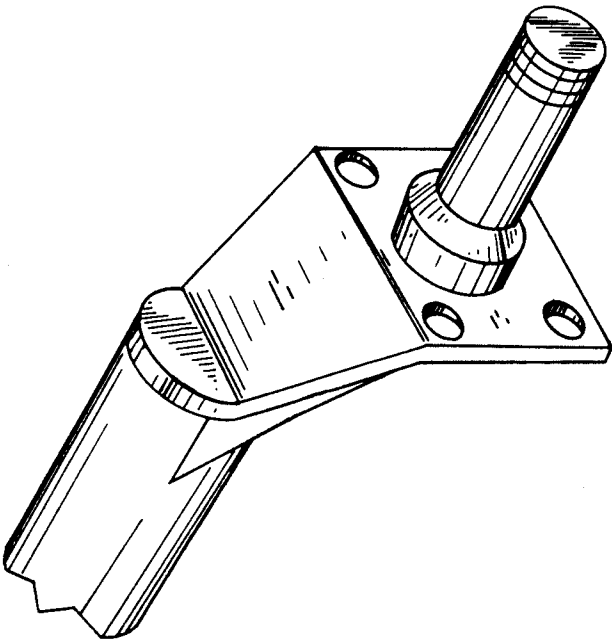


FIG. 2