



US 20120104868A1

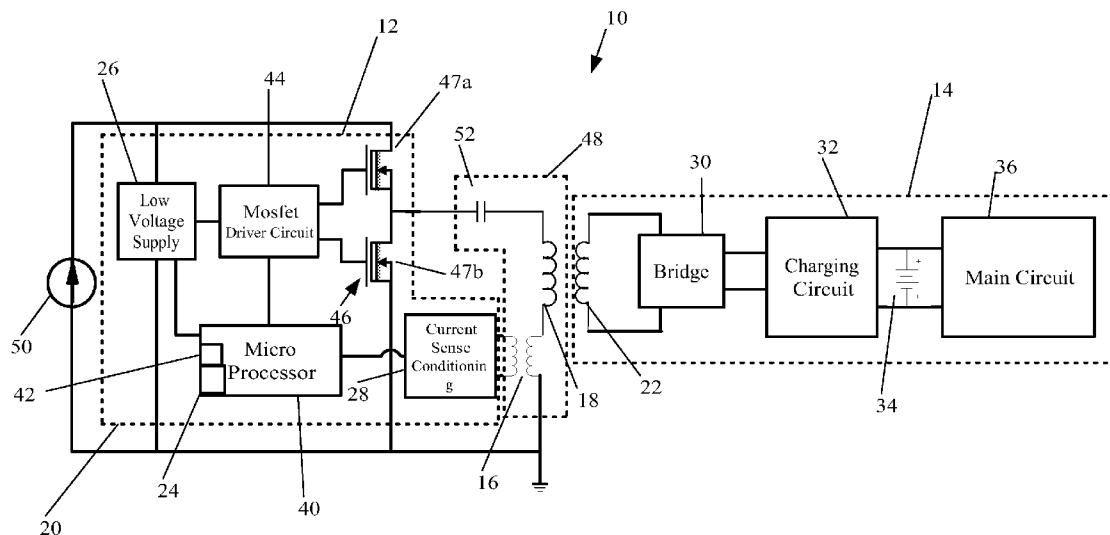
(19) **United States**(12) **Patent Application Publication**  
**Baarman et al.**(10) **Pub. No.: US 2012/0104868 A1**(43) **Pub. Date: May 3, 2012**(54) **INDUCTIVE POWER SUPPLY WITH DEVICE IDENTIFICATION****Publication Classification**(75) Inventors: **David W. Baarman**, Fennville, MI (US); **Scott A. Mollema**, Rockford, MI (US)(51) **Int. Cl.**  
**H02J 17/00** (2006.01)(73) Assignee: **ACCESS BUSINESS GROUP INTERNATIONAL LLC**, Ada, MI (US)(52) **U.S. Cl.** ..... **307/104**(21) Appl. No.: **13/323,126**(57) **ABSTRACT**(22) Filed: **Dec. 12, 2011**

An inductive power supply system to identify remote devices using unique identification frequencies. The system can inductively provide power to a remote device at different frequencies, and can sense reflected impedance of the remote device. The system further includes a plurality of different remote devices, each having a unique resonance frequency. In operation, the AIPS is capable of identifying the type of remote device present in the inductive field by applying power to a remote device at a plurality of unique identification frequencies until the remote device establishes resonance in response to one of the identification frequencies. The AIPS can recognize when resonance has been established by evaluating sensor data, which is representative of the reflected impedance of the remote device. The AIPS may pull operating parameters for the remote device from memory to ensure efficient operation and to assist in recognizing fault conditions.

**Related U.S. Application Data**

(63) Continuation of application No. 13/166,187, filed on Jun. 22, 2011, now Pat. No. 8,097,984, which is a continuation of application No. 11/965,085, filed on Dec. 27, 2007, now Pat. No. 7,989,986, which is a continuation-in-part of application No. 11/388,142, filed on Mar. 23, 2006, now Pat. No. 7,355,150.

(60) Provisional application No. 60/883,127, filed on Jan. 2, 2007.



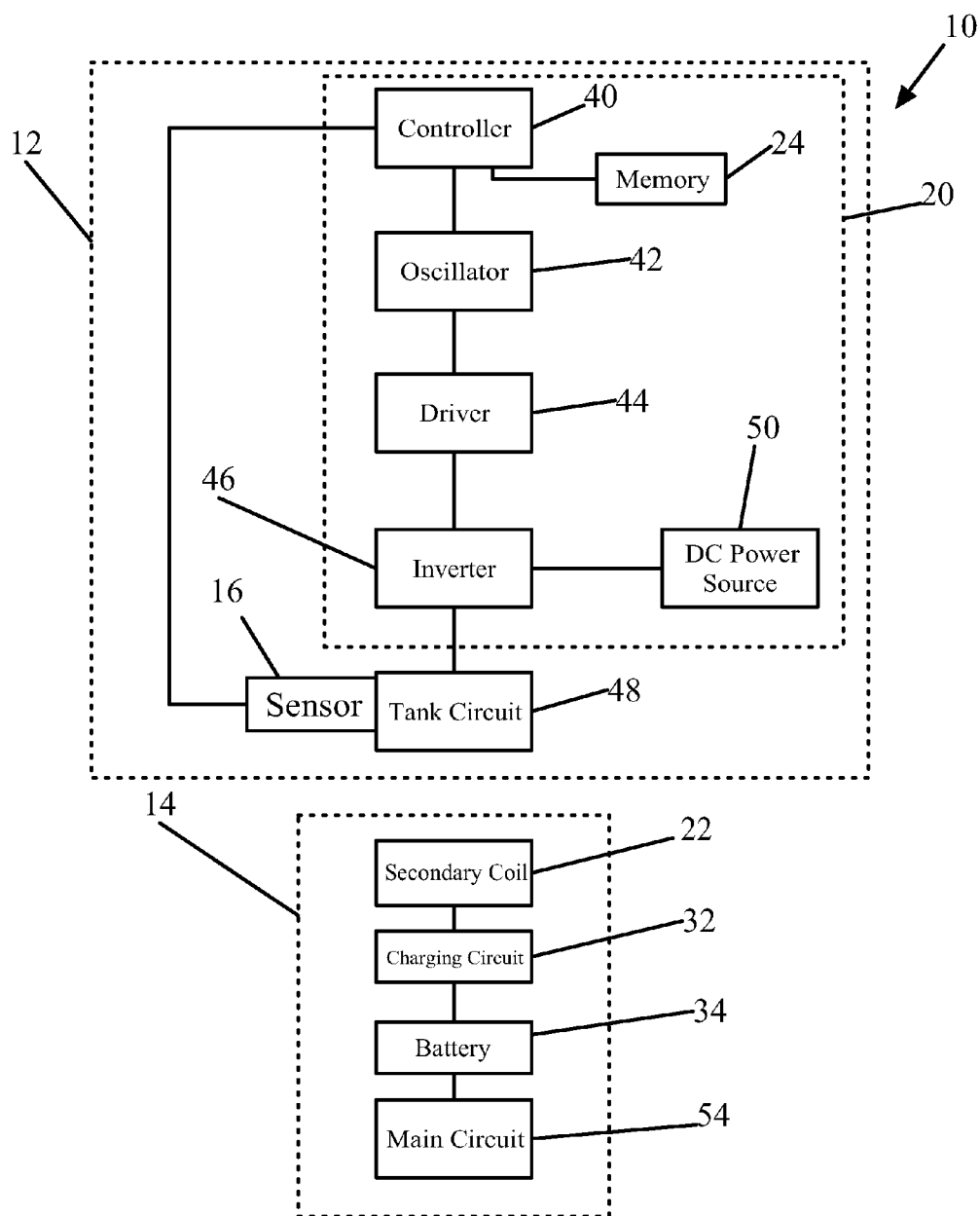


Fig. 1

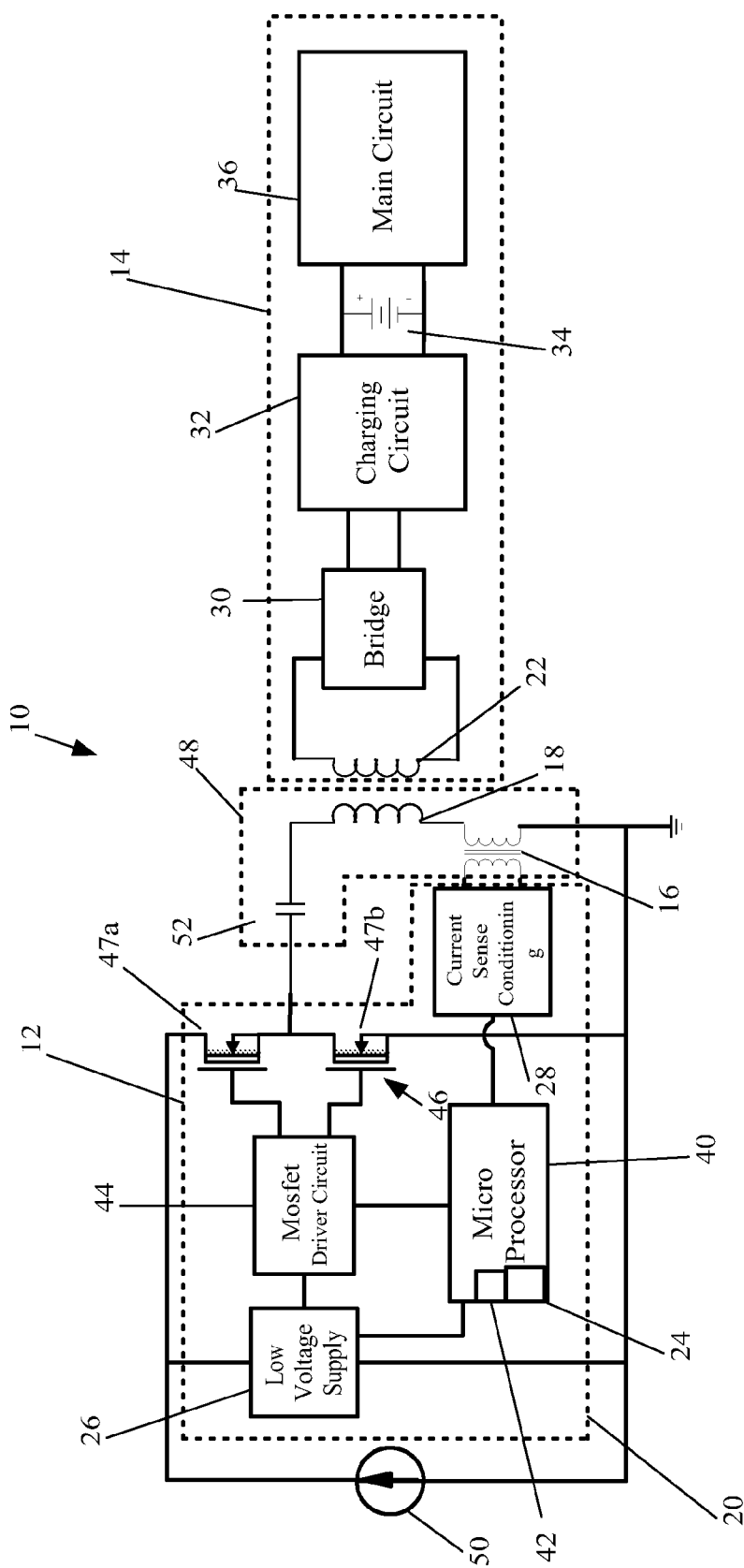


Fig. 2

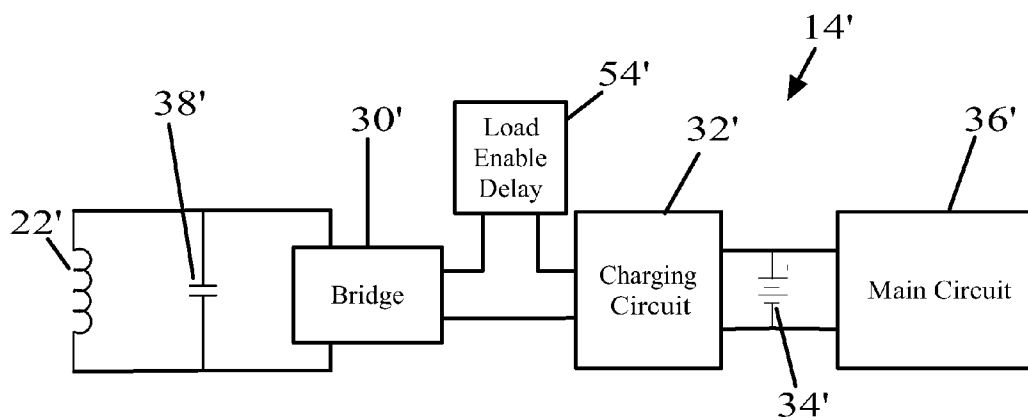


Fig.3A

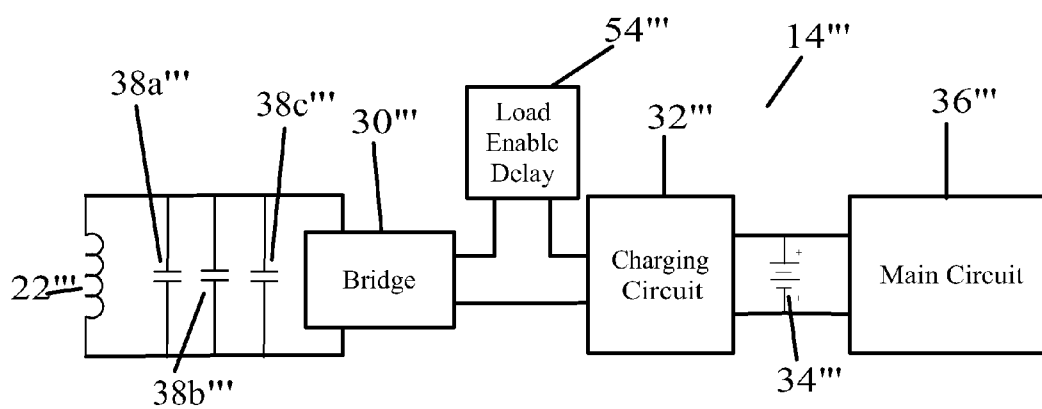


Fig.3B

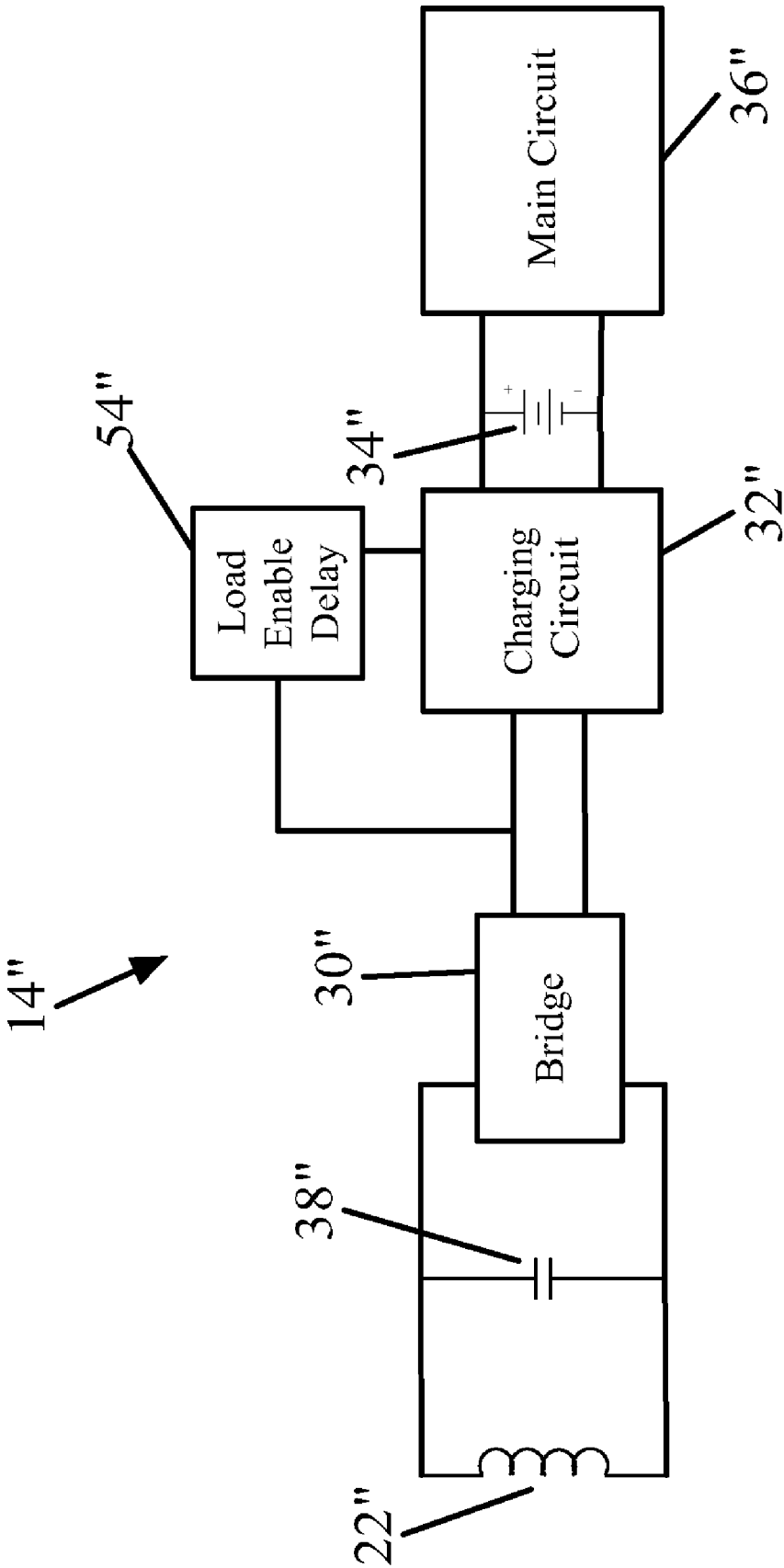


Fig. 4

C1	C2	C3	C4	C1	C2	C3	C4	Capacitance	Frequency	Inductance
8.2	6.8	3.3	2.2	0	0	0	0	0.0000	0	0.000000309
8.2	6.8	3.3	2.2	1	1	0	0	8.2000	100.03551	0.000000309
8.2	6.8	3.3	2.2	0	0	1	0	6.8000	109.85167	0.000000309
8.2	6.8	3.3	2.2	1	1	0	0	3.7173	148.57487	0.000000309
8.2	6.8	3.3	2.2	0	0	1	0	3.3000	157.69	0.000000309
8.2	6.8	3.3	2.2	1	1	0	0	2.3530	186.74378	0.000000309
8.2	6.8	3.3	2.2	0	0	1	0	2.2218	192.18097	0.000000309
8.2	6.8	3.3	2.2	1	1	1	0	1.7481	216.65786	0.000000309
8.2	6.8	3.3	2.2	0	0	0	1	2.2000	193.13002	0.000000309
8.2	6.8	3.3	2.2	1	1	0	1	1.7346	217.50013	0.000000309
8.2	6.8	3.3	2.2	0	1	0	1	1.6622	222.18594	0.000000309
8.2	6.8	3.3	2.2	1	1	0	1	1.3821	243.66718	0.000000309
8.2	6.8	3.3	2.2	0	0	1	1	1.3200	249.32978	0.000000309
8.2	6.8	3.3	2.2	1	0	1	1	1.1370	268.64929	0.000000309
8.2	6.8	3.3	2.2	0	1	1	1	1.1054	272.45684	0.000000309
8.2	6.8	3.3	2.2	1	1	1	1	0.9741	290.24099	0.000000309

FIG. 5

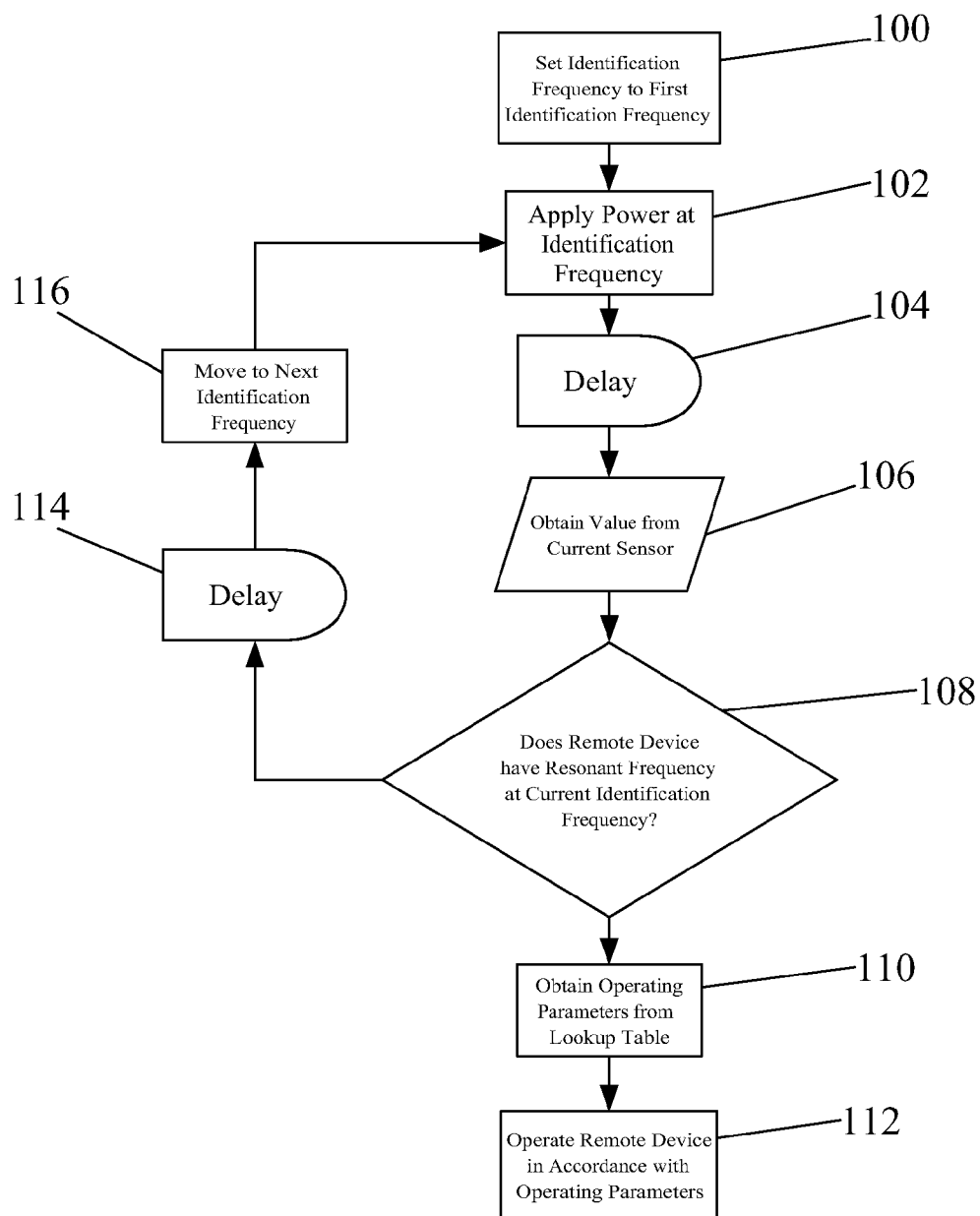


Fig. 6

## INDUCTIVE POWER SUPPLY WITH DEVICE IDENTIFICATION

[0001] The present invention relates to inductive power supply systems, and more particularly to an apparatus and method for inductive powering a variety of alternative remote devices.

[0002] There is a significant and continually increasing interest in wireless power supply systems, particularly in the field of consumer and business electronics, such as cell phones, music players, personal digital assistants and other remote devices. Wireless power supply systems provide a variety of benefits over conventional wired connections. Most notably, they eliminate the need for various charging cords and the need to repeatedly plug in and unplug electronic devices for recharging, thereby reducing cost and improving ease and convenience of use.

[0003] Systems for providing wireless power using the principles of electromagnetic inductive have been available for many years. Conventional systems have met with limited success as a result of practical limitations on pre-existing inductive technology. For example, to provide reasonably efficient operation, conventional inductive systems typically require close and precise alignment between the primary coil and the secondary coil, as well as a high degree of coordinated tuning between the electronics in the inductive power supply and the electronics in the remote device. These problems are complicated by the fact that different remote devices typically operate within different parameters. For example, one cell phone model is likely to have a different set of operating parameters than a different cell phone model, and even greater differences are likely to exist between remote devices of different types, such as a cell phone and a music player.

[0004] U.S. Pat. No. 6,825,620 to Kuennen et al discloses an inductive power supply system that has the ability to adjust its operation to correspond with the operating parameters of various loads. U.S. Pat. No. 6,825,620 to Kuennen et al, which is entitled "Inductively Coupled Ballast Circuit" and was issued on Nov. 30, 2004, is incorporated herein by reference. This inductive power supply system is capable of efficiently powering a wide variety of loads. Although a marked improvement over pre-existing systems, there is, in some applications, a desire for even greater efficiency over a broader range of products using a single inductive power supply system. In some applications, there exists a desire for a single inductive power supply that is capable of making a distinction between different loads, based upon various operating parameters of those loads. In other applications, there also exists a desire for a single inductive power supply system capable of more readily recognizing fault conditions over a broad range of remote devices.

## SUMMARY OF THE INVENTION

[0005] The present invention provides an inductive power supply system and associated method in which an adaptive inductive power supply ("AIPS") identifies the remote device through reflected impedance, and controls operation as a function of the identity of the remote device. The present invention also provides the AIPS with the ability to assess fault conditions by recognizing when the secondary circuit is operating outside of normal operating conditions for the identified device.

[0006] In one embodiment, the present invention includes an AIPS having a controller capable of supplying power to the secondary circuit at various frequencies and a current sensor capable of directly or indirectly sensing the current in the tank circuit. In this embodiment, each remote device or type of remote device includes one or more resonant frequencies that individually or collectively provide a signature that is unique to that device or type of remote device. For example, the identification frequency(ies) may uniquely identify a specific model of cell phone or a specific model of personal digital assistant. The system may also include a look-up table or other data collection containing operating information for one or more recognizable remote devices. This information can be used to establish operating parameters and recognize fault conditions.

[0007] In operation, the AIPS applies a short pulse of power to the secondary circuit at a frequency that is uniquely associated with a specific remote device. If the remote device has a resonant frequency at the frequency of the pulse, the remote device will draw a material amount of current, which will be reflected back into the tank circuit through reflected impedance. The controller will recognize the presence of the remote device when input from the current sensor shows the increased power draw. This permits the AIPS to recognize that a specific remote device is present and to obtain its operating parameters from the look-up table. Once the operating parameters have been retrieved, the AIPS can use the retrieved parameters to more efficiently power the device and to recognize that a fault condition has occurred when actual operating conditions fall outside the retrieved operating parameters.

[0008] In some applications, the remote device may inherently include a resonant frequency (or plurality of resonant frequencies) that is sufficiently unique to permit it to function as an identification frequency. In such application, the remote device will operate at resonance when the corresponding identification frequency is applied, thereby uniquely identifying the remote device.

[0009] In other applications, the remote device may not inherently have a resonant frequency at a frequency that will uniquely identify the remote device. With remote devices of this nature, the remote device can be provided with an identification capacitor that is selected to provide the remote device with a unique resonant frequency (or pattern of frequencies) that can be identified using an identification ping. In some applications, the main circuitry of the remote device may mask the identification capacitor. Accordingly, in some applications, the remote device may include a load delay circuit that isolates the main circuit of the remote device from the secondary coil and the identification capacitor for a sufficient period of time to allow resonance to be established by the identification capacitor and reflected back to the tank circuit.

[0010] In applications where the number of potential remote devices is large, a plurality of capacitors may be used to provide the remote devices with a plurality of resonant frequencies that collectively provide each remote device with a unique resonant "signature" in response to pings at different frequencies. For example, the use of two different capacitors can be used to provide three separate resonant frequencies—one for each capacitor individually and a third for the combination of the two capacitors. In one embodiment, the presence or absence of resonance at select frequencies can be used



as the bits in a binary code that can unique identify a large number of remote devices with only a limited number of frequencies.

**[0011]** In one embodiment, the method generally includes the steps of applying a short pulse of power to the secondary circuit at an identification frequency, waiting a period of time and sensing the current in the tank circuit to determine if a remote device is present that has a resonant frequency at the frequency of the short pulse of power. If so, the remote device is identified and the operating parameters can be pulled from a lookup table or other memory device. If not, the AIPS can move to the next identification frequency and repeat the process. In some applications, a small delay may be implemented between each identification ping to allow the circuit to settle so that residual energy from one identification ping does not impact the remote device's response to the next identification ping. The system may repeatedly cycle through all of the possible identification frequencies until a remote device is positively identified.

**[0012]** In another embodiment, each remote device capable of being powered by an inductive power supply is provided with a capacitor with the same common resonant frequency. The inductive power supply is programmed to send a short power pulse at that single common resonant frequency. A response from the device, as described above, indicates that the device is capable of receiving power from the power supply.

**[0013]** In another embodiment, each device capable of being powered by an inductive power supply is equipped with a capacitor with a common resonant frequency, and one or more additional capacitors with unique secondary and/or tertiary resonant frequencies. According to this embodiment, the inductive power supply is programmed to send a short power pulse at the single common resonant frequency. When the supply senses a response at that frequency, the inductive power supply sends out additional short pulses at different frequencies, or over a range of frequencies. Depending on the responses at the various frequencies, the power supply is able to distinguish the type of device, and the specific device model.

**[0014]** Once a remote device has been identified, the AIPS can provide power to the remote device in accordance with the operating parameters pulled from memory. Additionally, the AIPS can use information from the lookup table to help identify fault conditions. For example, the lookup table can include minimum and maximum operating frequencies, as well as minimum and maximum current usage. If the current draw on the primary exceeds the maximum current retrieved from the lookup table, the AIPS will recognize a fault condition and take appropriate action, such as powering down the primary.

**[0015]** The present invention provides a simple and effective method and apparatus for identifying remote devices. The lookup table permits the AIPS to retrieve information regarding the remote devices, such as normal operating parameters. This allows the AIPS to more efficiently power the remote device and to more readily identify fault conditions. In applications where a single resonant frequency does not provide a sufficient number of unique identifications, each device may be provided with a pattern of identification frequencies. In applications where a remote device inherently includes a uniquely identifying resonant frequencies (or frequency pattern), the present invention requires no modification to the remote device. In applications where a remote

device does not include an inherent uniquely identifying resonant frequency, the remote device may be provide with one or more identification capacitors that provide the remote device with an identification frequency or an identification frequency pattern. In another aspect, the present invention provides a set of standards from which a class of remote devices may be identified by predetermined identification frequencies. This permits intelligent operation of the AIPS for an essentially unlimited numbers of remote devices that fit within one of the predetermined classes of remote devices.

**[0016]** These and other objects, advantages, and features of the invention will be readily understood and appreciated by reference to the detailed description of the current embodiment and the drawings.

#### BRIEF DESCRIPTION OF THE DRAWINGS

**[0017]** FIG. 1 is a schematic diagram of an inductive power supply system in accordance with an embodiment of the present invention.

**[0018]** FIG. 2 is a circuit diagram of the inductive power supply system of one embodiment.

**[0019]** FIG. 3A is a circuit diagram of an alternative remote device having an identification capacitor.

**[0020]** FIG. 3B is a circuit diagram of an alternative remote device having a plurality of identification capacitors.

**[0021]** FIG. 4 is a circuit diagram of a second alternative remote device.

**[0022]** FIG. 5 is a table showing various capacitor values and associated resonant frequencies available from select capacitor combinations.

**[0023]** FIG. 6 is a flow chart showing the general steps of a method for identifying a remote device.

#### DESCRIPTION OF THE CURRENT EMBODIMENT

**[0024]** An inductive power supply system in accordance with an embodiment of the present invention is shown in FIG. 1. The inductive power supply system 10 generally includes an adaptive inductive power supply ("AIPS") 12 and one of a plurality of remote devices 14. The AIPS 12 generally includes a tank circuit 48 with a primary coil 18 (See FIG. 2) capable of inductively transmitting power. The AIPS also includes a controller 20 for selectively controlling the frequency at which power is generated by the primary coil 18, and a sensor 16 capable of sensing reflected impedance from a remote device 14. The AIPS 12 is intended for use with one or more remote devices 14, each of which has a unique resonant frequency or unique pattern of resonant frequencies. In operation, the AIPS 12 applies power to the primary 18 at an identification frequency and then evaluates the reflected impedance of the remote device 14 using the current sensor 16. If the remote device 14 has a resonant frequency at the identification frequency, then the AIPS 12 knows what type of remote device is inductively coupled to AIPS 12 and the AIPS 12 can recover operating parameters from a look-up table or other memory device. The recovered information can be used by the AIPS to provide efficient operation of the remote device and to identify fault conditions.

#### I. Adaptive Inductive Power Supply.

**[0025]** The present invention is suitable for use with a wide variety of adaptive inductive power supplies. As used herein, the term "adaptive inductive power supply" is intended to

broadly include any inductive power supply capable of providing power at a plurality of different frequencies. For purposes of disclosure, the present invention is described in connection with a particular AIPS 12. The illustrated AIPS 12 is merely exemplary, however, and the present invention may be implemented with essentially any AIPS capable of providing inductive power at varying frequencies.

[0026] In the illustrated embodiment, the AIPS 12 generally includes a frequency controller 20 and a tank circuit 48. In operation, the frequency controller 20 applies power to the tank circuit 48 to generate a source of electromagnetic inductive power. The frequency controller 20 of the illustrated embodiment generally includes a microcontroller 40, an oscillator 42, a driver 44 and an inverter 46. The microcontroller 40 may be a microcontroller, such as a PIC18LF1320, or a more general purpose microprocessor. The oscillator 42 and driver 44 may be discrete components or they may be incorporated into the microcontroller 40, for example, in the embodiment illustrated in FIG. 2, the oscillator 42 is a module within the microcontroller 40. The frequency controller 20 may also include a low voltage power supply 26 for supplying low voltage power to the microprocessor 40 and the driver 44. In this embodiment, the various components of the frequency controller 20 collectively drive the tank circuit 48 at a frequency dictated by the microcontroller 40. More specifically, the microcontroller 40 sets the timing of the oscillator 42. In certain modes of operation, the microprocessor 40 may establish the operating frequency as a function of input from the current sensor 16. The oscillator 42, in turn, operates the driver 44 at the frequency established by the microcontroller 40. The driver 44 provides the signals necessary to operate the switches 47a-b within the inverter 46. As a result, the inverter 46 provides AC (alternating current) power to the tank circuit 48 from a source of DC (direct current) power 50.

[0027] In the illustrated embodiment, the current sensor 16 is a current transformer having its primary coil disposed in the tank circuit 48 and its secondary coil connected to the microcontroller 40. The AIPS may include conditioning circuitry 28 for conditioning the current transformer output before it is supplied to the microcontroller 40. Although the illustrated embodiment includes a current transformer for sensing the reflected impedance of the remote device, the AIPS 12 may include essentially any alternative type of sensor capable of providing information regarding reflected impedance from the remote device 14. Further, although the current sensor 16 of the illustrated embodiment is located in the tank circuit, the current sensor (or other reflected impedance sensor) can be located in essentially any location where it is capable of providing readings indicative of the presence or absence of resonance in the remote device.

[0028] In the illustrated embodiment, the AIPS further includes a lookup table 24 or other memory device capable of storing information relating to the operating parameters of a plurality of remote devices 14. The stored information may be used to permit the AIPS 12 to more efficiently power the remote device 14 and more readily recognize fault conditions. In some applications, the AIPS 12 may be intended for use with a specific set of remote devices 14. In these applications, the lookup table 24 includes the unique resonant frequency (or pattern of frequencies) for each remote device 14, along with the desired collection of associated information, such as maximum and minimum operating frequencies and current usage. The lookup table 24 may, however, include essentially any information that may be useful to the AIPS 12 in operat-

ing the remote device 14. For example, in applications where it is desirable to establish wireless communications with the remote device 14, the lookup table 24 may include information regarding the wireless communication protocol of the remote device 14.

[0029] The tank circuit 48 generally includes the primary coil 18 and a capacitor 52. The capacitance of capacitor 52 may be selected to balance the impedance of the primary coil 18 at anticipated operating parameters. The tank circuit 48 may be either a series resonant tank circuit (as shown) or a parallel resonant tank circuit (not shown). The present invention may be incorporated into the AIPS shown in U.S. Pat. No. 6,825,620, which as noted above is incorporated herein by reference. As another example, the present invention may be incorporated into the AIPS shown in U.S. Patent Application Publication US 2004/130916A1 to Baarman, which is entitled "Adapted Inductive Power Supply" and was published on Jul. 8, 2004 (U.S. Ser. No. 10/689,499, filed on Oct. 20, 2003), which is also incorporated herein by reference. Further, it may be desirable to use the present invention in connection with an AIPS capable of establishing wireless communications with the remote device, such as the AIPS shown in U.S. Patent Application Publication US 2004/130915A1 to Baarman, which is entitled "Adapted Inductive Power Supply with Communication" and was published on Jul. 8, 2004 (U.S. Ser. No. 10/689,148, filed on Oct. 20, 2003), which is incorporated herein by reference.

## II. Remote Devices.

[0030] The present invention is intended for use with a wide variety of remote devices of varying designs and constructions. It is anticipated that these various remote devices will require power at varying frequency and will have different current requirements.

[0031] In some applications, the remote device may inherently include a unique resonant frequency or pattern of resonant frequencies. For example, a specific type of remote device may include a resonant frequency at 195 kHz. If none of the other remote devices to be identified by the AIPS include a resonant frequency at 195 kHz, then 195 kHz can operate as the identification frequency for this type of remote device. On the other hand, if the remote device does not include a resonant frequency that is unique among the set of remote devices that may need to be identified, then it may be possible to use the presence of a unique pattern of resonant frequencies to identify the remote device. For example, a remote device may have one resonant frequency at 195 kHz and another resonant frequency at 215 kHz. Even if other remote devices have a resonant frequency at 195 kHz or at 215 kHz, the combination of the two resonant frequencies in a single type of remote device may be sufficient to uniquely identify the type of remote device. If two resonant frequencies are not sufficient to uniquely identify a type of remote devices, then even more resonant frequencies may be considered until a unique pattern of identification frequencies emerges.

[0032] For purposes of disclosure, one embodiment of a remote device 14 having an inherent identification frequency is shown in FIG. 2. In the embodiment of FIG. 2, the remote device 14 generally includes a secondary 22 for receiving power from the AIPS 12, a bridge 30 (or other rectifier for converting AC power to DC), a charging circuit 32, a battery 34 and a main circuit 36. In operation, the bridge 30 converts the AC power generated in the secondary 22 to DC power,

which is required for operation of charging circuit 32 in this embodiment. Charging circuits are well-known and are widely used with a variety of rechargeable electronic devices. If desired, the charging circuit 32 may be configured to both charge the battery 34 and/or power the remote device 14 (if the remote device 14 is powered on). Charge circuits capable of charging and/or powering an electronic device are well-known and therefore will not be described in detail. In some applications, the charging circuit 32 will be a part of the main circuit 36. In other applications, the charging circuit 32 will be a separate circuit, and may even be controlled by the AIPS 12, if desired. The term “main circuit” is used loosely to refer to the operating circuitry for the remote device 14.

[0033] Although the illustrated embodiment is described in connection with a battery-powered remote device, the present invention may alternatively be used to directly power a remote device by eliminating the battery 34 and charging circuit 32 and connecting the secondary 22 to the main circuit 36, for example, through appropriate power conditioning circuitry, which may include a transformer or rectifier (such as bridge 30).

[0034] In another embodiment, a remote device may be provided with one or more identification capacitors that provide resonance at desired identification frequencies. Although useable with all remote devices, this embodiment is perhaps most useful with remote devices that do not have an inherent identification frequency or inherent identification pattern of frequencies. FIG. 3A shows a circuit diagram of an exemplary remote device 14' having an identification capacitor 38'. As shown in FIG. 3A, an identification capacitor 38' is connected in parallel across the secondary 22'. The identification capacitor 38' has a capacitance selected to establish resonance at the identification frequency. In this embodiment, it is possible that the charging circuit 32' and/or the main circuit 36' will mask the identification capacitor 38' making it difficult or impossible for the AIPS 12 to recognize the presence of the identification capacitor 38'. Accordingly, in this embodiment, the remote device 14' includes a load enable delay circuit 54' that prevents the charging circuit 32' and/or the main circuit 36' from receiving power for a period of time sufficient for the identification capacitor 38' to establish resonance and for that resonance to be conveyed to the AIPS 12 through reflected impedance. The load enable delay circuit 54' may include a simple timed switching circuit that connects the bridge 30' to the charging circuit 32' only after a sufficient period of time has lapsed. This embodiment is particularly well-suited for incorporating the present invention into remote devices already including a charging circuit. FIG. 4 shows an alternative embodiment intended primarily for use in incorporating the present invention into remote devices not already including charging circuitry or that include charging circuitry having a microprocessor with an enable input. In this embodiment, the load enable delay 54''' is connected to the “enable” input of the microprocessor in the charging circuitry 32'''. In this embodiment, the load enable delay 54''' does not enable the charging circuitry 32''' until a sufficient amount of time has passed for the AIPS 12 to recognize whether or not the identification capacitor 38''' has established resonance. Although described in connection with two specific embodiments, the load enable delay circuit may be essentially any circuitry capable of preventing the charging circuit and/or main circuit from masking the identification capacitor long enough for the AIPS 12 to recognize whether resonance has been established.

[0035] In the embodiment of FIG. 3A, the remote device 14' includes only a single identification capacitor 38'. In the embodiment shown in FIG. 3B, the remote device 14'' is provided with three identification capacitors 38a-c'' connected in parallel to the load each providing resonance at a different frequency. In a similar manner, additional identification capacitors can be provided to establish even more additional resonant frequencies, if desired. For example, FIG. 5 is a table showing the resonance frequencies that may be provided using different combinations of four capacitors. The first four columns labeled C1-C4 list the capacitance (in microfarads) of four different capacitors. In this example, the capacitors are 8.2, 6.8, 3.3, and 2.2 microfarad capacitors. The capacitors used in this table are merely exemplary and are not intended to limit the scope of the present invention. The second four columns labeled C1-C4 identify the capacitors included that particular combination, using a “1” to represent the presence of a capacitor and a “0” to represent the absence of a capacitor. The column labeled “Capacitance” provides the combined capacitance of the capacitors in that particular combination. The column labeled “Frequency” provides the resonant frequency of the capacitor combination when the inductance is 0.000000309 as specified in the last column. For example, row four includes a “1” in the C1 and C2 columns to indicate that an 8.2 microfarad capacitor and a 6.8 microfarad capacitor are combined to provide a combined capacitance of 3.7173 microfarad, which will have a resonant frequency of roughly 148.5 kHz. In addition to the resonant frequency created by the combined capacitance of the two capacitors, the identification capacitors will also establish resonance at the individual capacitances of each capacitor in that combination. So, continuing with the row 4 example, the combined capacitors will also have a resonant frequency at roughly 100 kHz (the resonance frequency of the 8.2 microfarad capacitor) and at roughly 109.9 kHz (the resonance frequency of the 6.8 microfarad capacitor). As can be seen, the combination of 8.2 and 6.8 microfarad capacitors provides an identification frequency pattern with resonance at roughly 100 kHz, 109.9 kHz and 148.5 kHz.

[0036] The particular remote devices described above are merely exemplary as the present invention is well-suited for use with essentially any remote device having an identification frequency and capable of inductively receiving power within the limits of the AIPS.

### III. Operation.

[0037] General operation of the system 10 is described in connection with FIG. 6. In this embodiment, the system 10 is configured to recognize one of a plurality of remote devices. Each remote device includes a single resonant frequency that is unique among the remote devices. Accordingly, the AIPS 12 can uniquely identify a remote device by cycling through each of the potential identification frequencies until a remote device is present that establishes resonance at one of the potential identification frequencies.

[0038] In the illustrated embodiment, the AIPS 12 is provided with data defining a plurality of potential identification frequencies. For example, a list or table of potential identification frequencies may be stored in onboard memory on the microcontroller 40. The identification process begins by setting 100 the identification frequency to the first frequency in the list. The AIPS 12 then applies 102 power to the tank circuit 48 at the identification frequency. The AIPS 12 continues to apply power to the tank circuit 48 for a period of delay 104.

The delay period is selected to provide sufficient time for the remote device **14** to establish resonance and to generate sufficient reflected impedance in the tank circuit **48**. The delay period may be a fixed period of time that remains constant throughout the identification process. The delay period may vary from application to application, but in the illustrated embodiment is approximately 6 microseconds. In some applications, a sufficient delay may be inherent in the system and therefore may not require the implementation of a separate deliberate delay step. If the remote device **14** includes a resonant frequency at the identification frequency, the remote device **14** will draw current and this increase in current draw will be reflected back into the tank circuit **48** by reflected impedance. After the delay **104** is complete, the microprocessor **40** obtains **106** input from the current sensor **16**. As noted above, the output of the current sensor **16** may be conditioned using conditioning circuitry **28**. The microprocessor **40** evaluates the input from the current sensor **16** to determine whether the remote device **14** has a resonant frequency at the current identification frequency. In this embodiment, the microprocessor **40** will conclude that a resonant frequency exists if the current sensor reading is above a threshold value. Typically, the threshold value for a specific application will be a value above the noise floor of that application plus an additional deadband. The amount of the deadband may vary from application to application.

**[0039]** If the microprocessor **40** determines that the remote device **14** does not include a resonant frequency at the current identification frequency, then the controller **20** prepares to apply to the next identification frequency to the tank circuit **48**. More specifically, the microprocessor **40** enters a delay **114** for a relatively short period of time. The delay period is selected to provide sufficient time for the remote device **14** to settle and for the energy in the remote device **14** to sufficiently dissipate. The delay period may be a fixed period of time that remains constant from throughout the identification process. The settle delay period may vary from application to application, but in the illustrated embodiment is approximately 5 microseconds. In some applications, a sufficient delay may be inherent in the system and therefore may not require the implementation of a separate deliberate settle delay step. After the delay, the microprocessor **40** sets the identification frequency as the next frequency in the list of potential identification frequencies. The process then repeats beginning with the step of applying **102** power to the tank circuit **48** at the new identification frequency.

**[0040]** If the microprocessor **40** determines that the remote device **14** includes a resonant frequency at the current identification frequency, the microprocessor **40** will retrieve **110** the operating parameters from the lookup table **24** and will exit the remote device identification process. The microprocessor **40** may then operate **112** the remote device **14** using the operating parameters retrieved from lookup table **24**. The lookup table **24** may include an anticipated operating frequency and may begin operation by applying power to the tank circuit **48** at the recalled operating frequency. The microprocessor **40** may also use maximum and minimum current draws values obtained from the lookup table to determine the presence of a fault condition. For example, if during operation the actual current draw sensed by the current sensor exceeds the maximum current draw or falls below the minimum current draw, the microprocessor **40** will conclude that a fault condition exists. The microprocessor **40** may be programmed to take remedial action if a fault condition is encountered. For

example, the microprocessor **40** may be programmed to shut down the system if a fault condition arises. Alternatively, the microprocessor **40** may restart the identification process to determine if a different remote device **40** has been placed near the primary **18**.

**[0041]** In the embodiment described above, the microprocessor **40** cycles through a list of potential identification frequencies in an effort to identify a remote device. As an alternative to cycling through a list, the AIPS **12** may be programmed to simply cycle through a range of frequencies using a specified step value. For example, by stepping from 100 kHz to 300 kHz in 5 kHz increments.

**[0042]** In another aspect, the present invention provides a mechanism for establishing standards for using frequency identification for remote devices. In this embodiment, unique identification frequencies can be specified for each type of remote device and for other identifying features. For example, the standards may specify a different identification frequency for each type of device (e.g. cell phone, personal digital assistant, may digital music player) and/or for each manufacturer (e.g. company name). In applications where a unique identification frequency is assigned to each manufacturer, the manufacturer may be permitted to add additional identification frequencies to specify model numbers and product types.

**[0043]** In an alternative method for establishing standards, identification frequencies can be established by the class of the remote device rather than the specific model type. For example, all devices operating within a given set of operating parameters can be assigned the same identification frequency (or identification frequency pattern). This alternative method is particularly well-suited for use in application where a plurality of remote devices of different types are capable of operating under the operating parameters set forth in a single record in the lookup table.

**[0044]** According to another embodiment, each device capable of being inductively powered or charged by an inductive power supply is provided with at least one common resonant frequency, and at least one unique frequency. For example, referring to the above embodiments and the figures, each device capable of being charged by AIPS **12** is provided with an 8.2 microfarad capacitor, providing the device with a primary identification resonant frequency of 100 kHz. AIPS **12** repeatedly sends out a pulse at approximately 100 kHz. If a device **14** with a resonant frequency of 100 kHz is placed within the field generated by AIPS **12**, then AIPS proceeds with a sweep of additional frequencies to identify the type of device **14**. According to one embodiment, the charging circuit of each individual battery type is provided with a second unique resonant frequency, or secondary identification frequency. For example, each lithium ion battery is further comprised of a capacitor or other circuitry to provide a secondary resonant frequency at 109.4 kHz; each nickel cadmium battery is provided with a capacitor or other circuitry to provide a secondary resonant frequency at 148.5 kHz. According to another embodiment, each battery may further be equipped with a capacitor or other circuitry to provide a tertiary resonant frequency used to identify the individual manufacturer or supplier of that battery. For example, each inductively charged lithium ion battery manufactured or sold by vendor X is provided with one or more capacitors or other circuitry to provide a primary identification resonant frequency of 100 kHz, a secondary identification resonant frequency of 109.4 kHz, and a tertiary identification resonant frequency of 130

kHz. Each lithium ion battery manufactured or sold by vendor Y is provided with one or more capacitors or other circuitry to provide a primary identification resonant frequency of 100 kHz, a secondary identification resonant frequency of 109.4 kHz, and a tertiary identification resonant frequency of 140 kHz. According to another embodiment, an additional identification resonant frequency may be added to distinguish, for example, different types of inductively charged lithium ion batteries sold by vendor X or vendor Y. Such identification could allow AIPS to adjust the charging or power control not only according to the requirements of various load types as discussed above, but according to specific requirements of individual manufacturers or suppliers of those load types. It would be obvious that such identification strategies and protocols could be used to identify inductive loads that are not only powered by a rechargeable battery, but also to identify those loads that are directly inductively powered.

**[0045]** The standards discussed above rely on the assignment of a range of identification frequencies. The spacing between identification frequencies may vary from application to application depending of the resolution of the AIPS sensing the present of resonance during the identification process. For example, an AIPS with sufficient resolution to accurately recognize frequency differences of 5 kHz can use a separation of 5 kHz between identification frequencies (e.g. 250 kHz and 255 kHz). An AIPS with lower resolution may require greater separation between identification frequencies (e.g. 250 kHz and 260 kHz).

**[0046]** The above description is that of current embodiments of the invention. Various alterations and changes can be made without departing from the spirit and broader aspects of the invention as defined in the appended claims, which are to be interpreted in accordance with the principles of patent law including the doctrine of equivalents. Any reference to claim elements in the singular, for example, using the articles “a,” “an,” “the” or “said,” is not to be construed as limiting the element to the singular.

The embodiments of the invention in which an exclusive property or privilege is claimed are defined as follows:

1. An inductive power supply to supply operating wireless power to a remote device, said inductive power supply comprising:

- inductive field generating circuitry;
- frequency control circuitry electrically connected to said inductive field generating circuitry, said frequency control circuitry capable of operating said inductive field generating circuitry at an operating frequency;
- reflected impedance sensing circuitry to sense a characteristic of power in said inductive power supply; said characteristic being indicative of a reflected impedance of said remote device;
- identification circuitry to determine an identification profile of said remote device as a function of said sensed characteristic of said reflected impedance sensing circuitry, said identification profile including one or more resonant frequencies;
- a memory storing a common identification profile of a plurality of known remote devices, wherein said common identification profile includes one or more resonant frequencies; and
- power supply control circuitry for supplying operating wireless power to said remote device if said remote device has an identification profile corresponding with said common identification profile.

2. The inductive power supply of claim 1 wherein said inductive field generating circuitry includes a tank circuit having a primary.

3. The inductive power supply of claim 2 wherein said frequency control circuitry includes an oscillator and a driver.

4. The inductive power supply of claim 3 wherein said reflected impedance sensing circuitry includes a current sense transformer coupled to said tank circuit.

5. The inductive power supply of claim 1 wherein said frequency control circuitry is capable of controlling an operating frequency of said inductive field generating circuitry as a function of said output of said reflected impedance sensing circuitry.

6. The inductive power supply of claim 1 wherein said power supply control circuitry manages supply of said operating wireless power to said remote device in order to charge a battery included in said remote device.

7. The inductive power supply of claim 1 wherein said power supply control circuitry manages supply of said operating wireless power to directly power said remote device.

8. The inductive power supply of claim 1 wherein said inductive power supply is capable of supplying operating wireless power to a plurality of said remote devices, and wherein said identification circuitry is capable of determining a plurality of identification profiles of each of said plurality of said remote devices.

9. The inductive power supply of claim 1 wherein said remote device includes an identification capacitor to provide said remote device with an identification profile corresponding to said common identification profile.

10. A method for controlling an inductive power supply to supply operating wireless power to a remote device, comprising the steps of:

- determining a common identification profile for a plurality of known remote devices capable of being powered by the inductive power supply, the common identification profile including one or more resonant frequencies;
- providing the remote device having device circuitry and a secondary configured for receiving the operating wireless power, wherein the operating wireless power is used to operate the device circuitry;
- applying an inductive field to the remote device at the one or more resonant frequencies of the common identification profile;
- determining whether the remote device has a resonant frequency profile corresponding with the common identification profile; and
- operating the inductive power supply to supply operating wireless power to the remote device if the remote device has a resonant frequency profile corresponding to the common identification profile.

11. The method of claim 10 wherein said providing step includes providing the remote device with an identification capacitor to provide the remote device with a resonant frequency profile corresponding to the common identification profile.

- 12. The method of claim 10 further including the steps of:
  - providing the remote device to be powered by the inductive power supply with a unique identification profile;
  - storing the unique identification profile and an associated operating parameter in a memory associated with the inductive power supply;
  - once it is determined that the remote device has a resonant frequency profile corresponding with the common iden-

tification profile, applying an inductive field to the remote device at one or more resonant frequencies corresponding to one or more of the unique identification profiles;

determining whether the remote device has a resonant frequency profile corresponding with one of the unique identification profiles;

retrieving the associated operating parameter from the memory upon determining that the remote device corresponds with one of the unique identification profiles; and following said retrieving step, operating the inductive power supply in accordance with the retrieved operating parameter to supply the operating wireless power to the remote device.

**13.** A method for operating an inductive power supply to supply power to a remote device comprising the steps of:

providing the remote device having device circuitry and a secondary configured for receiving operating wireless power, wherein the operating wireless power is used to operate the device circuitry;

storing at least one known identification profile in a memory associated with the inductive power supply;

applying inductive power to the remote device at one or more frequencies to determine an identification profile of the remote device contained within the inductive field;

comparing the determined identification profile with the at least one stored known identification profile to determine if the determined identification profile corresponds to one or more of the at least one stored identification profile; and

operating the inductive power supply to supply the operating wireless power to the remote device based on the determination that said determined identification profile corresponds to one or more of the at least one stored identification profile.

**14.** The method of claim **13** further including the step of providing the remote device with an identification capacitor to provide the remote device with an identification profile corresponding to one or more of the at least one stored identification profile.

**15.** The method of claim **13** further including the step of retrieving an operating parameter for the inductive power supply from the memory based on the determination that the determined identification profile corresponds to one or more of the at least one stored identification profile, wherein the

operating parameter includes an operating frequency that is different from the one or more frequencies of said applying inductive power step.

**16.** The method of claim **15** wherein the remote device has identification circuitry connected to the secondary for providing at least one resonant identification frequency corresponding to at least one of the one or more frequencies applied in said applying inductive power step; and

wherein the operating parameter includes an operating frequency other than the at least one resonant identification frequency provided by the identification circuitry.

**17.** The method of claim **13** wherein the determined identification profile includes an inherent resonant frequency of the remote device at least in part defined by receiving circuitry of the remote device, wherein the receiving circuitry includes the secondary.

**18.** The method of claim **13** wherein each of the at least one known identification profiles includes one or more resonant frequencies.

**19.** The method of claim **18** wherein said applying step includes the steps of:

applying a pulse of power at the one or more resonant frequencies associated with the known identification profile; and

sensing current in a tank circuit of the inductive power supply to determine whether the remote device has a resonant frequency at the one or more applied frequencies.

**20.** An inductive power supply for supplying operating wireless power to a remote device comprising:

a driver;

a primary circuit having a primary;

a sensor in said primary circuit adapted to sense a characteristic of power in said primary circuit indicative of a reflected impedance of said remote device;

identification circuitry to determine an identification profile of said remote device as a function of output of said sensor;

a memory storing at least one known identification profile; and

control circuitry for controlling operation of said inductive power supply to supply said operating wireless power to said remote device if said remote device has an identification profile corresponding with at least one known identification profile.

\* \* \* \* \*