



US008224346B2

(12) **United States Patent**
Himmelstein

(10) **Patent No.:** **US 8,224,346 B2**
(45) **Date of Patent:** **Jul. 17, 2012**

(54) **SYSTEM AND METHOD FOR MATCHING
USERS IN A WIRELESS COMMUNICATION
SYSTEM**

(76) Inventor: **Richard B. Himmelstein**, Kure Beach,
NC (US)

(*) Notice: Subject to any disclaimer, the term of this
patent is extended or adjusted under 35
U.S.C. 154(b) by 321 days.

(21) Appl. No.: **12/036,732**

(22) Filed: **Feb. 25, 2008**

(65) **Prior Publication Data**

US 2008/0248785 A1 Oct. 9, 2008

(51) **Int. Cl.**
H04W 24/00 (2009.01)

(52) **U.S. Cl.** **455/456.1; 455/456.2; 455/456.3**

(58) **Field of Classification Search** **455/456.1-457**
See application file for complete search history.

(56) **References Cited**

U.S. PATENT DOCUMENTS

4,591,823 A	5/1986	Horvat	
5,086,394 A *	2/1992	Shapira	705/1.1
5,170,499 A	12/1992	Grothause	
5,389,824 A	2/1995	Moroto et al.	
5,418,836 A	5/1995	Yazaki	
5,420,794 A	5/1995	James	
5,422,816 A	6/1995	Sprague et al.	
5,423,066 A *	6/1995	Sasuta	455/509
5,425,058 A	6/1995	Mui	
5,451,964 A	9/1995	Babu	
5,459,304 A	10/1995	Eisenmann	
5,473,602 A	12/1995	McKenna et al.	
5,483,692 A	1/1996	Person et al.	
5,495,609 A	2/1996	Scott	
5,539,398 A	7/1996	Hall et al.	

5,572,201 A	11/1996	Graham et al.
5,663,734 A	9/1997	Krasner
5,668,880 A	9/1997	Alajajian
5,731,785 A	3/1998	Lemelson et al.
5,731,788 A	3/1998	Reeds
5,732,074 A	3/1998	Spaur et al.
5,740,532 A	4/1998	Fernandez et al.
5,801,616 A	9/1998	Ghazarian et al.
5,805,082 A	9/1998	Hassett
5,847,661 A	12/1998	Ricci
5,875,183 A	2/1999	Nitadori
5,900,825 A	5/1999	Pressel et al.
5,907,793 A	5/1999	Reams
5,908,454 A	6/1999	Zyburn et al.
5,917,408 A	6/1999	Cardillo et al.

(Continued)

OTHER PUBLICATIONS

Auerbach, Mitchell J., Emergency Management Communications
System, U.S. Appl. No. 60/111,281, filed Dec. 7, 1998.

(Continued)

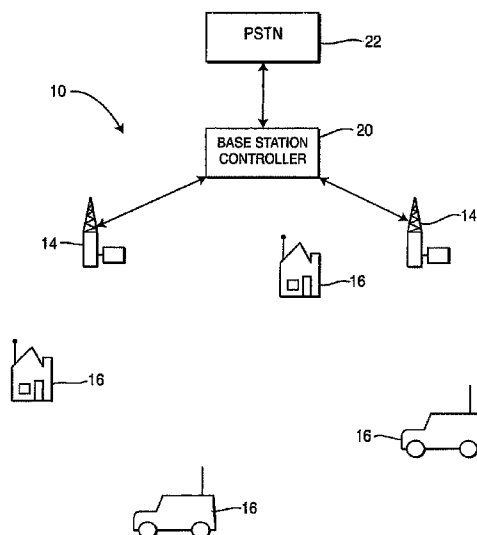
Primary Examiner — Marisol Figueroa

(74) *Attorney, Agent, or Firm* — Lech Law, LLC; Robert R.
Lech

(57) **ABSTRACT**

A system for matching users in a wireless communication
system based on proximity of the users and user-defined
profiles includes at least two mobile units. The mobile units
include a requesting unit and at least one target unit, and each
mobile unit is capable of operating as both a requesting unit
and a target unit. The system also includes profile means for
storing a user profile on each of the mobile units and search
means for searching for at least one target user by a requesting
user. The search means compares the user profiles of each
target user with the user profile of the requesting user. The
search means can also indicate a match when a target unit is
within a predetermined distance of the requesting unit.

30 Claims, 7 Drawing Sheets



U.S. PATENT DOCUMENTS

5,952,941 A	9/1999	Mardirossian	6,647,270 B1	11/2003	Himmelstein
5,974,368 A	10/1999	Schepps et al.	6,654,689 B1	11/2003	Kelly et al.
5,982,281 A	11/1999	Layson	6,678,516 B2	1/2004	Nordman et al.
5,983,161 A	11/1999	Lemelson et al.	6,690,681 B1	2/2004	Preston et al.
6,009,323 A	12/1999	Heffield et al.	6,700,482 B2	3/2004	Ververs et al.
6,014,090 A	1/2000	Rosen et al.	6,711,474 B1	3/2004	Treyz et al.
6,018,659 A	1/2000	Ayyagari et al.	6,728,323 B1	4/2004	Chen et al.
6,018,699 A	1/2000	Baron et al.	6,728,528 B1	4/2004	Loke
6,026,162 A	2/2000	Palett et al.	6,745,021 B1	6/2004	Stevens
6,028,537 A	2/2000	Suman et al.	6,748,318 B1	6/2004	Jones
6,032,054 A	2/2000	Schwinke	6,751,452 B1	6/2004	Kupczyk et al.
6,041,410 A	3/2000	Hsu et al.	6,754,485 B1	6/2004	Obradovich et al.
6,052,598 A	4/2000	Rudrapatna et al.	6,754,585 B2	6/2004	Root et al.
6,060,995 A	5/2000	Wicks et al.	6,772,331 B1	8/2004	Hind
6,064,893 A	5/2000	O'Brien	6,812,860 B1	11/2004	Schwarzwalder
6,084,512 A	7/2000	Elberty et al.	6,816,878 B1	11/2004	Zimmers et al.
6,084,870 A	7/2000	Wooten et al.	6,819,919 B1	11/2004	Tanaka
6,097,313 A	8/2000	Takahashi et al.	6,842,774 B1	1/2005	Piccioni
6,097,974 A	8/2000	Camp et al.	6,853,849 B1 *	2/2005	Tognazzini 455/457
612,251 A	9/2000	Spaur et al.	6,915,126 B2	7/2005	Mazzara, Jr.
6,119,095 A	9/2000	Morita	6,952,155 B2	10/2005	Himmelstein
6,140,939 A	10/2000	Flick	7,062,379 B2	6/2006	Videtich
615,465 A	11/2000	Caci	7,092,723 B2	8/2006	Himmelstein
6,150,937 A	11/2000	Rackman	7,123,926 B2	10/2006	Himmelstein
616,725 A	12/2000	Kennedy, III et al.	7,155,335 B2	12/2006	Rennels
6,157,317 A	12/2000	Walker et al.	7,174,253 B2	2/2007	Videtich
6,161,005 A	12/2000	Pinzon	7,216,145 B2	5/2007	Collings, III
6,172,641 B1	1/2001	Millington	7,257,426 B1	8/2007	Witkowski et al.
6,175,922 B1	1/2001	Wang	7,327,226 B2	2/2008	Turnbull et al.
6,177,873 B1	1/2001	Cragun	7,330,693 B1	2/2008	Goss
6,189,105 B1	2/2001	Lopes	7,450,955 B2	11/2008	Himmelstein
6,195,542 B1	2/2001	Griffith	7,463,896 B2	12/2008	Himmelstein
6,199,045 B1	3/2001	Giniger et al.	7,505,772 B2	3/2009	Himmelstein
6,208,844 B1	3/2001	Abdelgany	7,536,189 B2	5/2009	Himmelstein
6,208,862 B1	3/2001	Lee	7,596,391 B2	9/2009	Himmelstein
6,225,890 B1	5/2001	Murphy	7,599,715 B2	10/2009	Himmelstein
6,252,539 B1	6/2001	Phillips et al.	7,747,291 B2	6/2010	Himmelstein
6,252,544 B1	6/2001	Hoffberg	7,783,304 B2	8/2010	Himmelstein
6,255,953 B1	7/2001	Barber	7,885,685 B2	2/2011	Himmelstein
6,275,231 B1	8/2001	Obradovich et al.	7,907,976 B2	3/2011	Himmelstein
6,275,774 B1	8/2001	Baron, Sr. et al.	2001/0044309 A1	11/2001	Bar et al.
6,282,464 B1	8/2001	Obradovich	2001/0052847 A1	12/2001	Auerbach
6,295,001 B1	9/2001	Barber	2002/0016171 A1	2/2002	Doganata et al.
6,295,346 B1	9/2001	Markowitz et al.	2002/0147766 A1	10/2002	Vanska et al.
6,295,492 B1	9/2001	Lang et al.	2002/0174073 A1	11/2002	Nordman et al.
6,304,816 B1	10/2001	Berstis	2003/0169181 A1	9/2003	Taylor
6,311,060 B1	10/2001	Evans et al.	2003/0169185 A1	9/2003	Taylor
6,323,803 B1	11/2001	Jolley et al.	2004/0002348 A1 *	1/2004	Fraccaroli 455/456.3
6,330,499 B1	12/2001	Chou et al.	2004/0010591 A1	1/2004	Sinn et al.
6,366,893 B2	4/2002	Hannula et al.	2004/0014457 A1	1/2004	Stevens
6,377,825 B1	4/2002	Kennedy et al.	2004/0067752 A1	4/2004	Himmelstein
6,405,033 B1	6/2002	Kennedy, III et al.	2004/0145459 A1	7/2004	Himmelstein
6,424,912 B1	7/2002	Correia et al.	2004/0162064 A1	8/2004	Himmelstein
6,463,462 B1	10/2002	Smith et al.	2004/0203931 A1	10/2004	Karaoguz
6,466,796 B1	10/2002	Jacobson et al.	2004/0248569 A1	12/2004	Kondou et al.
6,480,699 B1	11/2002	Lovoi	2005/0021666 A1	1/2005	Dinnage et al.
6,490,525 B2	12/2002	Baron, Sr. et al.	2005/0233741 A1	10/2005	Zamani et al.
6,493,633 B2	12/2002	Baron, Sr. et al.	2007/0054677 A1	3/2007	Himmelstein
6,496,107 B1	12/2002	Himmelstein	2007/0082678 A1	4/2007	Himmelstein
6,498,987 B1	12/2002	Kelly et al.	2008/0119212 A1	5/2008	Himmelstein
6,498,989 B1	12/2002	Pisetski et al.	2008/0146248 A1	6/2008	Himmelstein
6,505,123 B1	1/2003	Root et al.	2009/0156125 A1	6/2009	Himmelstein
6,522,875 B1	2/2003	Dowling et al.	2009/0156203 A1	6/2009	Himmelstein
6,522,977 B2	2/2003	Corrigan et al.	2009/0311994 A1	12/2009	Himmelstein
6,526,268 B1	2/2003	Marrah et al.	2009/0311995 A1	12/2009	Himmelstein
6,535,743 B1	3/2003	Kennedy, III et al.	2010/0291874 A1	11/2010	Himmelstein
6,539,232 B2	3/2003	Hendrey et al.	2010/0323660 A1	12/2010	Himmelstein
6,542,748 B2	4/2003	Hendrey et al.	2010/0323661 A1	12/2010	Himmelstein
6,542,749 B2	4/2003	Tanaka et al.			
6,542,750 B2	4/2003	Hendrey et al.			
6,542,758 B1	4/2003	Chennakeshu et al.			
6,549,130 B1	4/2003	Joao			
6,590,529 B2	7/2003	Schwoegler			
6,603,405 B2	8/2003	Smith			
6,611,201 B1	8/2003	Bishop et al.			
6,618,593 B1	9/2003	Drutman et al.			
6,628,928 B1	9/2003	Crosby et al.			
6,646,559 B2	11/2003	Smith			

OTHER PUBLICATIONS

Auerbach, Mitchell J., Emergency Management Communications System, U.S. Appl. No. 60/120, 096, filed Feb. 16, 1999.

"Match.com Launches Match Mobile with AT&T Wireless," Match.com Corporate, Dec. 2003, (2 pgs).

"Match.com's Wireless Dating Service MatchMobile Launches Photo Profiles", Match.com Corporate, Dec. 2003, (2 pgs).

"Our Biggest Store: Organization Find People Nearby", AT&T Wireless, <http://www.attwireless.com/personal/features/organization/findfriends.jhtml>, Feb. 2004, (2 pgs).

AT&T Wireless, "Features and Services User Guide, How to Use Your AT&T Wireless Features and Services" (Feb. 6, 2004) (2 pgs).

Selinger, "Protecting the Cellphone User's Right to Hide", The New York Times, nytimes.com, Feb. 5, 2004.

Yahoo Finance, "Private Inventor Files Patent Application for Telematics-Based Public and Emergency First Responders Safety Advisory System", Feb. 2004, <http://biz.yahoo.com/p>.

Wireless Services from AccuWeather.com, <http://www.accuweather.com/iwxpage/adc/mobile/messenger.htm>. Sep. 9, 2004 (2 pgs).

Press Release, "GM's OnStar Subsidiary Brings Location-Based, Real-Time Traffic and Road Condition Information Into The Vehicle," pp. 1-2, Nov. 13, 2000.

Specification of the Bluetooth System; Specification vol. 1; Wireless connections made easy; Core; v1.0 B; Dec. 1, 1999, (1082 pgs).

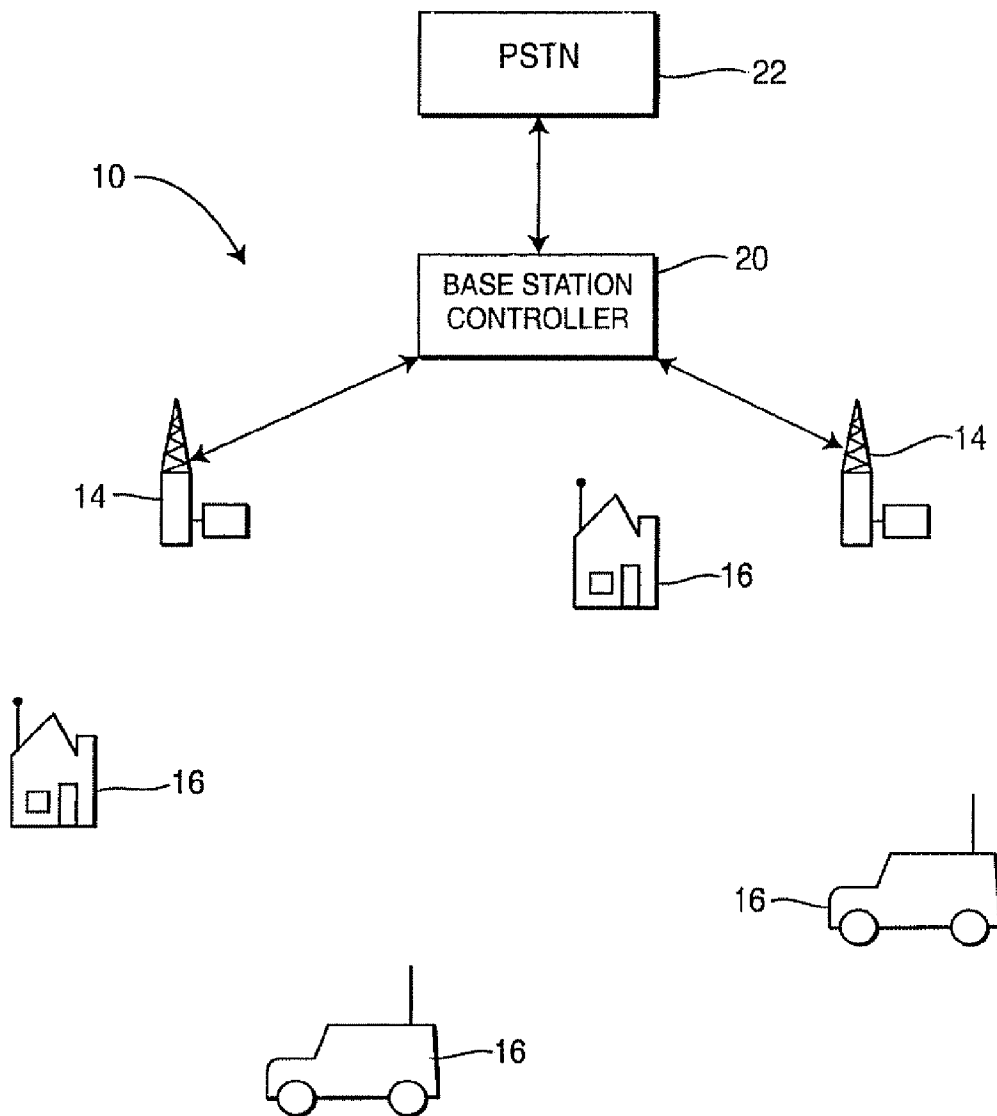
IEEE Std 802.11b-1999 (R2003); (Supplement to ANSI/IEEE Std 802.11, 1999 Edition), (96 pgs).

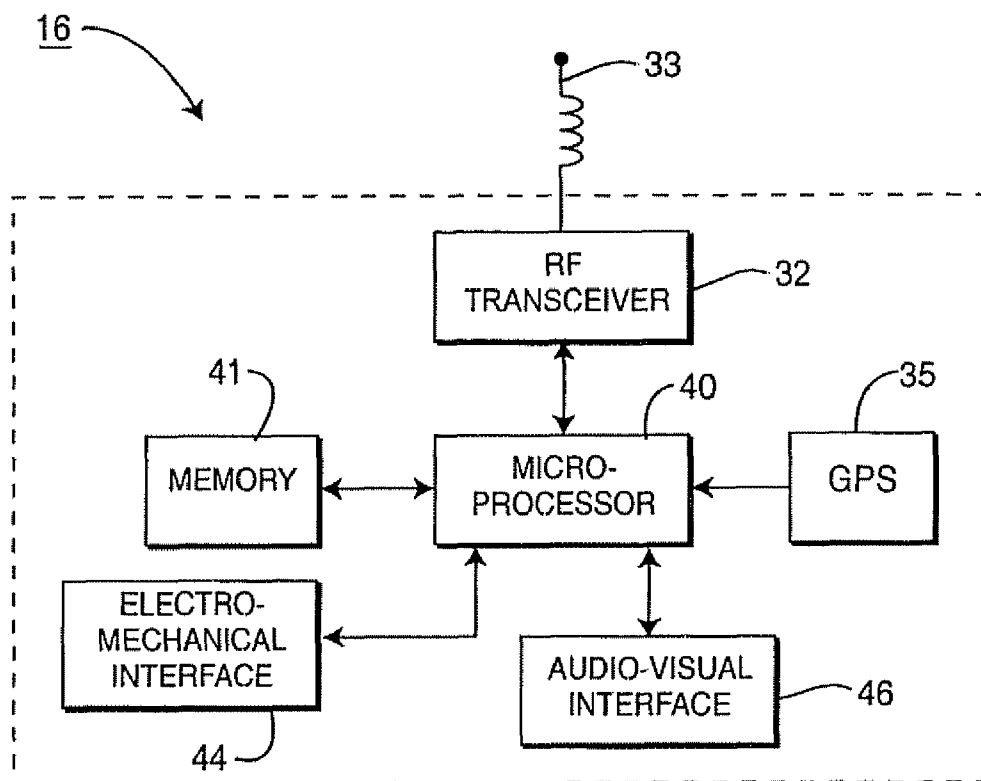
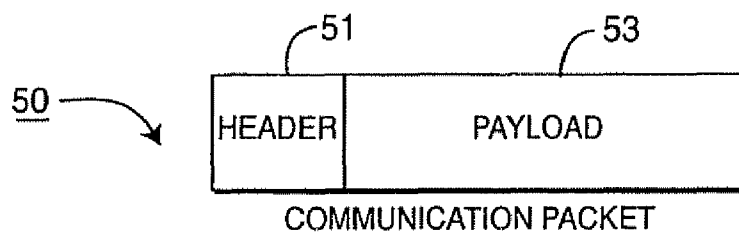
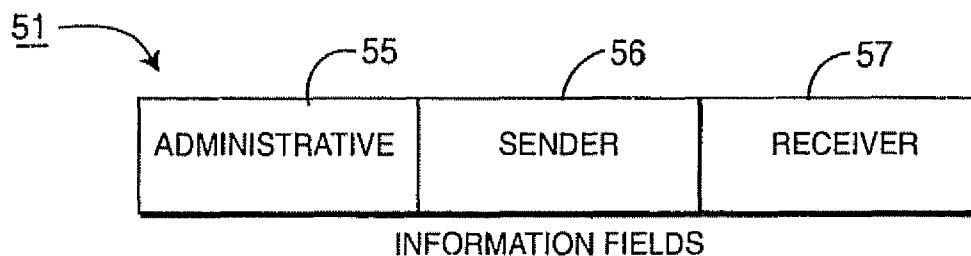
Ratliff, "The Telematics Options", Wired, Issue 7.07, <http://www.wired.com/wired/archive/7.07/options.html>, (4 pgs).

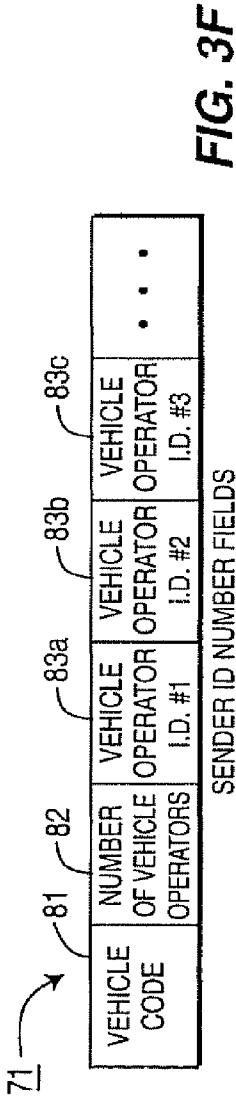
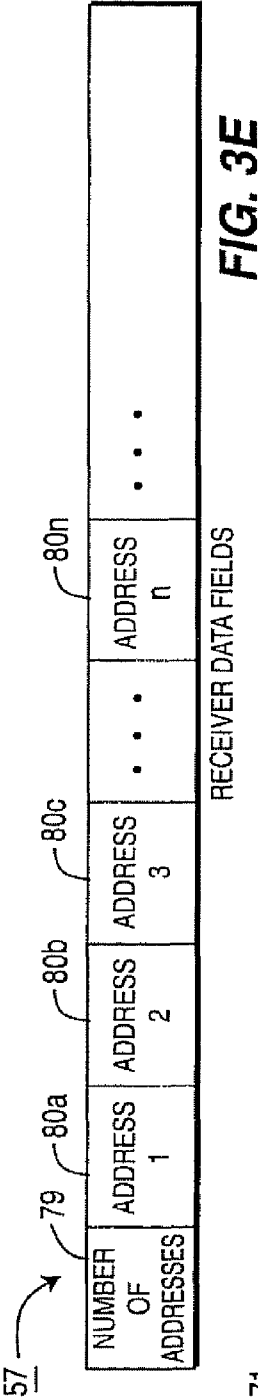
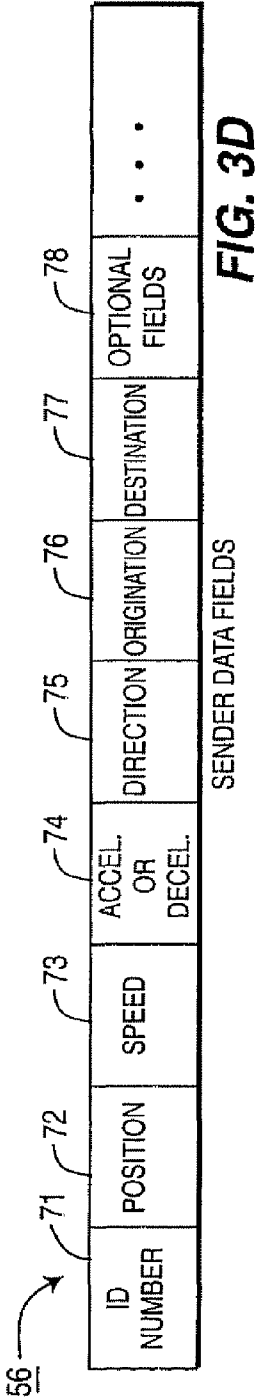
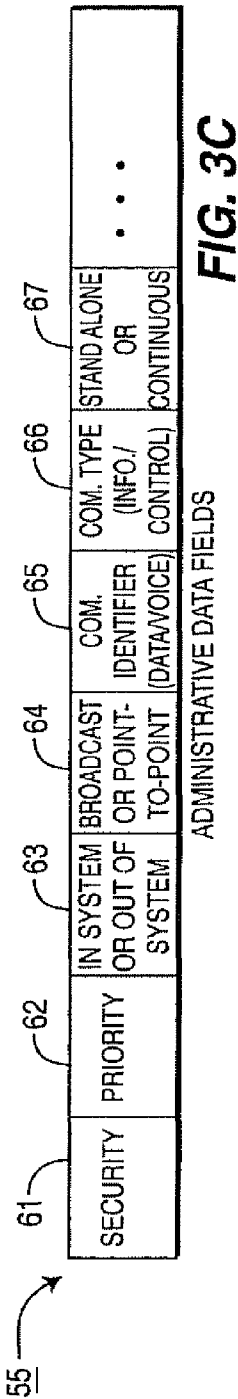
IEEE Std 802.11p; May 25, 2006, (4 pgs).

US 6,731,928, 05/2004, Tanaka (withdrawn)

* cited by examiner

**FIG. 1**

**FIG. 2****FIG. 3A****FIG. 3B**



90

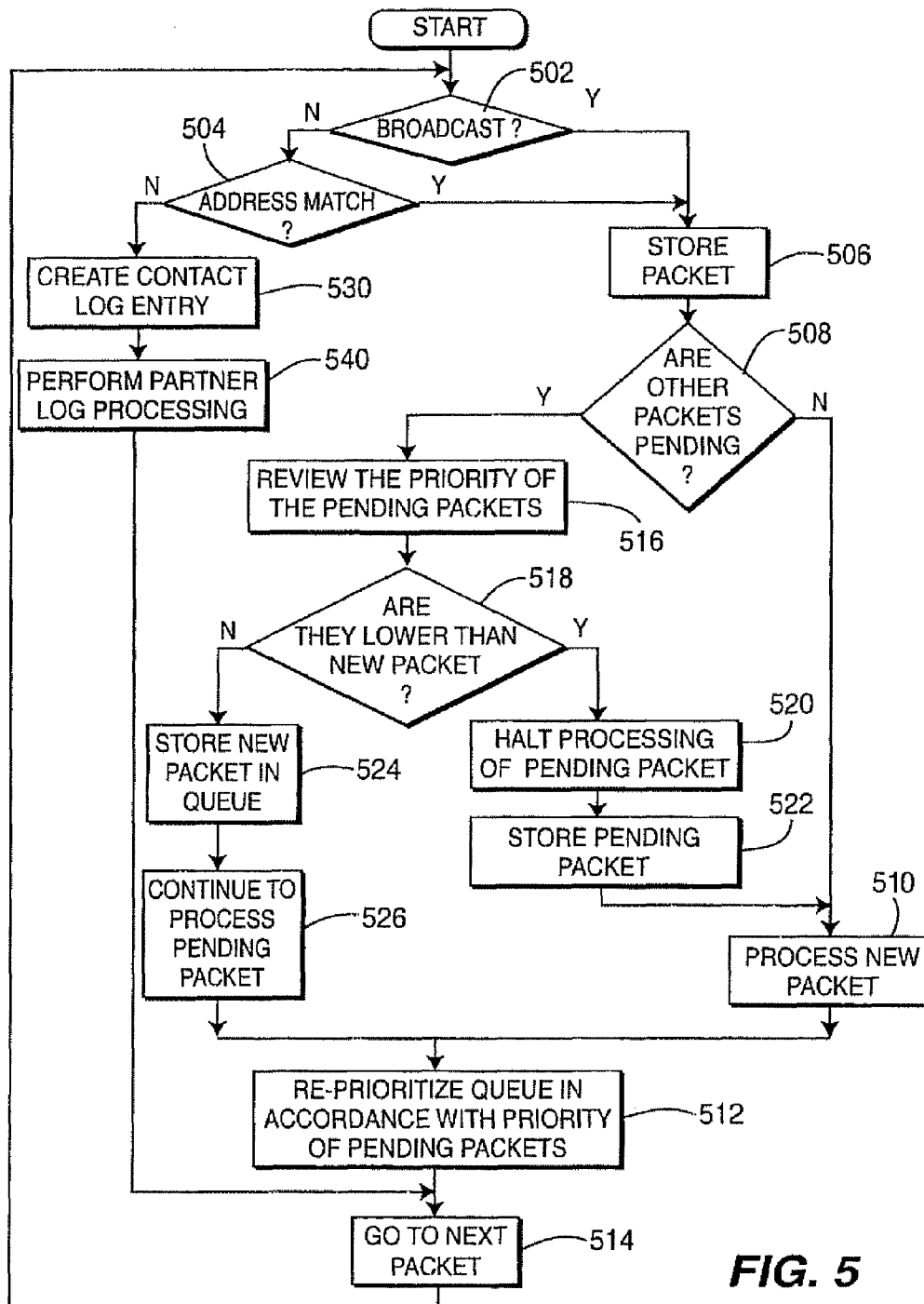
90a	90b	90c	90d	90e	90f
TIME	DATE	POSITION	SPEED	ACC./DECEL.	DIRECTION
08:50	09/01/2000	42°34,18'31	65	A	NNW

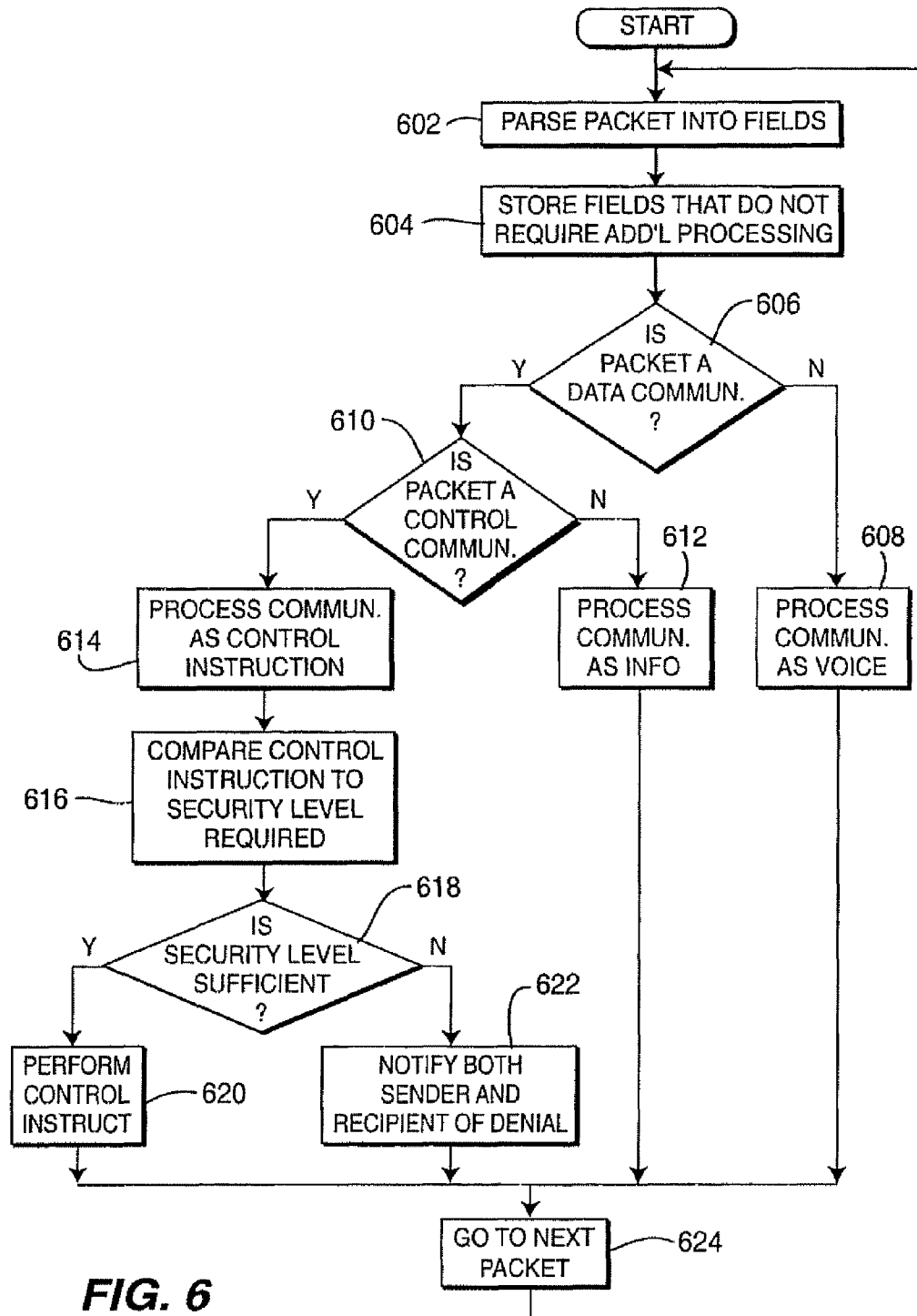
FIG. 4A

92

92a	92b	92c	92d	92e	92f	92g	92h	92i	92j	92k
TIME	DATE	INCOMING/ OUTGOING	ADDRESSES	PRIORITY	BROADCAST/ POINT-TO-POINT	IN/OUT OF SYSTEM	SECURITY	DATA/ VOICE	INFO/ CONTROL	CONTENTS
08:52	09/01/2000	1	432967185	4	B	1	5	V	I	TRAFFIC MESSAGE
12:08	09/01/2000	1	458341788	1	P	1	1	D	C	REDUCE SPEED CONTROL INSTRUCTION

FIG. 4B

**FIG. 5**

**FIG. 6**

1

SYSTEM AND METHOD FOR MATCHING USERS IN A WIRELESS COMMUNICATION SYSTEM

CROSS REFERENCE TO RELATED APPLICATION(S)

This application claims priority from U.S. application Ser. No. 10/705,065 filed Nov. 10, 2003, which is a continuation-in-part of U.S. patent application Ser. No. 09/659,074, filed Sep. 11, 2000, issued as U.S. Pat. No. 6,647,270 on Nov. 11, 2003, which in turn claims priority from U.S. Provisional Application No. 60/153,424, filed Sep. 10, 1999, which are incorporated by reference as if fully set forth herein.

BACKGROUND

The present invention generally relates to communication systems. More particularly, the invention relates to a mobile communication system which allows mobile vehicles to communicate with neighboring vehicles and roadside communication networks.

Various communication systems have been used by automobile drivers to communicate with other vehicles while the vehicle is in motion. While many advances have been made in vehicle to vehicle communication, numerous disadvantages still remain in using conventional communication systems.

Conventional mobile communication systems include cellular telephones and CB or two-way radio. When using a cell phone as a means of mobile communication, there is no practical way of discovering whether a neighboring vehicle operator possesses a cell phone. Additionally, there is no process for determining the phone number of the targeted cell phone. Accordingly, the cell phone as a communication medium is severely limited.

CB radio is a widely broadcast public medium where mobile users may talk to other mobile or stationary users in their vicinity. However, since there is no ability to prevent others from listening, there is no privacy between mobile communicators.

Automobile accidents are one of the greatest causes of serious injury and fatalities in society. Accordingly, the development of improved control and warning systems to minimize personal and financial losses resulting from automobile accidents is of utmost importance. The limitations of present forms of communication are even more severe when considering the extent to which a communication link can improve both the driving experience and the safety statistics of modern vehicles.

SUMMARY

The present invention provides a communication link among vehicles which eliminates these pitfalls. The system comprises a broadband RF transceiver with antenna, a position determining means (such as a GPS receiver), an audio-visual interface, an electro-mechanical interface, and a microprocessor with associated memory. These components are incorporated into a mobile unit located within each vehicle.

The GPS receiver receives signals from GPS satellites and calculates the position of the vehicle. The microprocessor carries out overall control of the system. The memory includes identification information that is unique to each vehicle. In response to input from the GPS receiver, information received by the transceiver and instructions input by the

2

vehicle operator via the audio-visual interface, the microprocessor determines the necessary subsequent actions.

The transmission from a vehicle may include information describing the status of the vehicle for use by the receiving vehicle. For example, the transmission may provide information regarding the speed, direction, and position of the transmitting vehicle. This information is received and processed by the receiving vehicle to provide a visual or audible display of the position, direction, and speed of the transmitting vehicle.

According to one aspect of the present invention, there is provided a communication system for transmitting information between a mobile unit within a vehicle traveling on a road and a fixed communication network installed on a roadside. The fixed communication network includes a base station having a transceiver for communicating with the vehicle by transmitting and receiving a plurality of communication packets. This communication can include payment instructions, security instructions, and/or access codes which can be transmitted with or without intervention by the vehicle operator.

A system for matching users in a wireless communication system based on proximity of the users and/or user-defined profiles includes at least two mobile units. The mobile units include a requesting unit and at least one target unit, and each mobile unit is capable of operating as both a requesting unit and a target unit. The system also includes profile means for storing a user profile on each of the mobile units and search means for searching for at least one target user by a requesting user. The user profile can also be stored in the system; it need not be stored in the mobile unit. The search means compares the user profiles of each target user with the user profile of the requesting user. The search means can also indicate a match when a target unit is within a predetermined distance of the requesting unit.

A method for matching users in a wireless communication system based on proximity of the users and user-defined profiles begins by providing each user with a mobile unit, including a requesting unit and at least one target unit. Each mobile unit is capable of operating as both a requesting unit and a target unit, and a user profile is stored in each mobile unit. The user profile can also be stored in the system; it need not be stored in the mobile unit. The user profile of each detected target unit is compared with the user profile of the requesting unit. The users are notified when the user profile of the requesting unit matches the user profile of at least one target unit. Lastly, a communication is initiated between the requesting unit and each of the matching target units. The method can also detect target units when they are within a predetermined distance of the requesting unit.

BRIEF DESCRIPTION OF THE DRAWINGS

FIG. 1 shows a vehicle communication system embodying the present invention.

FIG. 2 is a block diagram showing a mobile unit in accordance with the preferred embodiment.

FIG. 3A is a diagram illustrating the contents of a communication packet transmitted by the mobile unit shown in FIG. 2.

FIG. 3B illustrates the header of the communication packet.

FIG. 3C illustrates the information fields of the header's transmission administration.

FIG. 3D illustrates the information fields of the header's sender portion.

FIG. 3E illustrates the information fields of the header's receiver portion.

FIG. 3F illustrates the sub fields contained in the identification number field.

FIG. 4A illustrates the memory of a typical mobile unit shown in FIG. 2.

FIG. 4B is a diagram of a vehicle communication log.

FIG. 4C is a diagram of a vehicle user log.

FIG. 4D is a diagram of a vehicle contact log.

FIG. 5 is a flow diagram of the procedure utilized by the microprocessor upon receipt of a communication packet.

FIG. 6 is a flow diagram of the procedure for processing communication packets.

DETAILED DESCRIPTION OF THE PREFERRED EMBODIMENTS

The preferred embodiment will be described with reference to the drawing figures where identical numerals represent similar elements throughout.

A vehicle communication system embodying the present invention is shown in FIG. 1. The vehicle communication system 10 generally includes one or more base stations 14, each of which is in wireless communication with a plurality of remote units 16. Although the remote units 16 may be fixed or mobile, they will be referred to hereinafter for simplicity as mobile units 16. Each mobile unit 16 can communicate with another mobile unit 16, the closest base station 14, or the base station 14 which provides the strongest communication signal. The base stations 14 communicate with a base station controller 20, which coordinates communications among base stations 14 and mobile units 16. The communication system 10 may be connected to a public switched telephone network (PSTN) 22, wherein the base station controller 20 also coordinates communications between the base stations 14 and the PSTN 22. Preferably, each base station 14 communicates with the base station controller 20 over a wireless link, although a land line may also be provided. A land line is particularly applicable when a base station 14 is in close proximity to the base station controller 20. The fixed remote units 16 may also communicate with a base station 14 over a land line.

The base station controller 20 performs several functions. Primarily, the base station controller 20 provides all of the operations, administrative, and maintenance (OA&M) signaling associated with establishing and maintaining all of the wireless communications between the mobile units 16, the base stations 14, and the base station controller 20. The base station controller 20 can provide the routing of all communications between mobile units 16, and between the mobile units 16 and the PSTN 22. The base station controller 20 also provides an interface between the mobile units 16 and the PSTN 22. This interface includes multiplexing and demultiplexing of the communication signals that enter and leave the system 10 via the base station controller 20. Although the vehicle communication system 10 is shown employing antennas to transmit RF signals, one skilled in the art should recognize that communications may be accomplished via microwave or satellite uplinks. Additionally, the functions of the base station controller 20 may be combined with a base station 14 to form a "master base station".

A preferred embodiment of the mobile unit 16 is shown in FIG. 2. Each mobile unit includes a radio frequency (RF) transceiver 32 with an antenna 33 capable of transmitting and receiving a plurality of RF signals, a global positioning system (GPS) receiver 35, a microprocessor 40 with associated

memory 41, an interface to the vehicle's electromechanical systems 44, and an audio-visual interface 46.

The RF transceiver 32 transmits and receives RF signals at a plurality of RF frequencies to one or more vehicles which include a mobile unit 16. Received signals are downloaded to baseband and forwarded to the microprocessor 40 for further processing. Transmitted signals are forwarded from the microprocessor 40 to the RF transceiver 32 for upconversion and transmission over one of the plurality of RF frequencies.

The vehicle communication system 10 also provides for the option of transmitting a communication over currently licensed radio station channels, for example 105.9 FM. This can permit a mobile unit operator to broadcast to non-mobile unit operators. It also can provide a "scanning channel", such that non-mobile unit operators can listen to broadcast communications.

The GPS receiver 35 is configured to receive signals from GPS satellites and compute the position of the mobile unit 16. There are many commercially available GPS receivers 35 that can perform such a function. GPS readings which are provided to the microprocessor 40 permit the microprocessor 40 to accurately calculate the speed, direction, and acceleration or deceleration rate of the vehicle.

The microprocessor 40 provides central control of the mobile unit 16. As will be explained in greater detail hereinafter, the microprocessor 40 also performs packet handling, including packet assembling for outgoing communication packets 50 and packet disassembling for incoming communication packets 50 received from the RF transceiver 32. Communication packets 50 received by the microprocessor 40 are stored in memory 41. The memory 41 is also used to store identification information that is unique to each vehicle and/or vehicle operator. For example, license and registration for each vehicle can be read if positioned with a bar code or magnetic strip in a specific location of the vehicle. Optionally, the system may have a card reader where the operator must place their card prior to the vehicle starting. This card can be a license with a magnetic strip or a smartcard that identifies the driver and the vehicle. This unique information regarding the vehicle may also include the position of the vehicle, speed of the vehicle, and rate of acceleration or deceleration as calculated by data obtained from the GPS receiver 35.

The audio-visual interface (AVI) 46 preferably includes a microphone, speakers, and graphic display along with alphanumeric and directional keypads. However, those of skill in the art should realize that the AVI 46 may encompass other input devices which are known, such as a voice activated input unit, an infrared remote control, a full keyboard, or any other type of electronic or manual data input means. Additionally, the output portion of the AVI 46 may include any type of output means such as a stereo system or a heads-up display.

The electro-mechanical interface 44 provides an electrical coupling to the electro-mechanical systems of the vehicle over which the mobile unit 16 has control. These systems may include the radio, lights, horn, windows, locks, steering, breaking, and any other electro-mechanical systems of the vehicle.

Communications between mobile units 16 using the vehicle communication system 10 are accomplished through a stream of transmitted communication packets 50. As shown in FIG. 3A, each communication packet 50 includes a header 51 and a payload 53. The header 51 includes a plurality of predefined information fields which provide information regarding the particular communication, the sender which originated the communication, and the receiver to which the communication is destined. It should be recognized that a

5

voice or data communication may be segmented or “pack-
etized” and transmitted using a plurality of packets **50**. The
present invention is not restricted to transmitting a commu-
nication having a predefined length. Accordingly, the payload
53 may include only a portion of the communication that is
sent between mobile units **16**, and a single communication
may be sent using a plurality of packets **50**. Communications
may include data transmissions, such as uploads from or
downloads to the mobile unit **16**, or may include voice com-
munications.

Referring to FIG. 3B, the header **51** includes a plurality of
information fields which can be generally categorized by
three different functional groups: 1) transmission administra-
tive information **55**; 2) sender information **56**; and 3) receiver
information **57**. These fields will be explained in greater detail
hereinafter.

Referring to FIG. 3C, the information fields associated
with the transmission administration **55** are shown. These
fields provide information that defines the particular commu-
nication being transmitted. Although the number of fields
may vary, the type of fields described may change depending
on the particular communication and the requirements of the
system **10**. In one embodiment of the present invention, the
fields associated with transmission administration **55** include
the following fields; security **61**; priority **62**; in system/out of
system **63**; broadcast/point-to-point **64**; communication
identifier (data/voice) **65**; communication type (information/
control) **66**; and communication length (standalone or con-
tinuous) **67**.

Since the vehicle communication system **10** in accordance
with the present invention permits control of a vehicle and
overall control of the communication system **10** by law
enforcement authorities via a “security instruction”, the sys-
tem **10** has a plurality of security levels to ensure that unau-
thorized individuals will not use the system **10** for subversive
purposes. Optionally, driver may override law enforcement.
The system **10** may ask for permission for law enforcement to
control vehicle. The security field **61** is defined as follows:

0—Access to all functions of the vehicle communication
system **10**, including the physical control of the vehicle and
all of the information stored within the memory **41**.

1—Access only to the physical control of the vehicle.

2—Access only to the information stored within the
memory **41**.

3—Access for transmitting and receiving communi-
cations.

4—Access only to receiving communications.

The security field **61** may also include a security code,
which permits authentication of the entity sending the secu-
rity instruction. As aforementioned, it should be understood
by those skilled in the art that additional fields may be added
or defined as desired to increase the functionality of the sys-
tem **10** or the security layers. Additionally, it should be rec-
ognized that although the system **10** is capable of a broad
range of functionality, there are legal implications to imple-
menting all of the functionality. For example, a court order
would most likely be necessary before permitting law
enforcement officials access to information in, or control of,
the mobile unit **16**.

The priority field **62** is an indicator of the urgency of the
transmitted communication. The priority field **62** can be a
numeric priority from one to ten; with urgent communica-
tions having the highest priority of one (erg., communications
from law enforcement officials) and non-urgent communica-
tions having the lowest priority of ten (e.g., advertisements).

The in system/out of system field **63** indicates whether the
communication is destined for, or originated from another

6

mobile unit **16** or an entity located outside of the vehicle
communication system **10**. Communications with entities
outside the vehicle communication system **10** can be routed
between the mobile unit **16** and the outside entity over the
PSTN **22**.

The broadcast/point-to-point field **64** identifies whether
the message is intended for broadcast to all mobile units **16** or
whether it is intended to be routed to a particular mobile unit
16. As will be explained in detail hereinafter, the receiver field
57 will specify the particular address, or multiple addresses,
of the mobile units **16** to which the communication will be
transmitted.

The communication identifier field **65** identifies whether
the communication is a voice or data transmission since each
transmission may be encoded and processed differently by
the receiving microprocessor **40**.

The communication type field **66** identifies whether the
communication comprises information for output to the user
via the AVI **46**, or whether the information is a control instruc-
tion that will permit electro-mechanical control of the
vehicle.

The communication length field **67** indicates whether the
entire communication is included within the current packet
50, or whether the packet **50** is part of a multi-packet com-
munication.

Referring to FIG. 3D, the fields associated with the sender
portion **56** of the header **51** include identification number **71**,
position **72**, speed **73**, acceleration or deceleration **74**, direc-
tion **75**, origination **76**, and destination **77**, and may include
additional optional fields **78** as specified by the vehicle opera-
tor.

The identification number **71** provides a unique identifica-
tion for the sending mobile unit **16**. The identification number
may be the vehicle license number with two additional letters
representing the state where the license plate was issued, such
as PA for Pennsylvania. Depending upon system administra-
tion, the identification number **71** may further relate to one or
more individual operators of the vehicle. As shown in FIG. 3F,
the identification number field **71** may include a plurality of
subfields including vehicle code **81**, number of authorized
vehicle operators **82**, and a vehicle operator identification
number **83a, b . . . n** for each operator. This feature is particu-
larly useful if the vehicle is part of a commercial fleet of
vehicles with multiple drivers. Upon turning on the vehicle,
the vehicle operator inputs their identification number **71**.
This number **71** is compared to the list of authorized operators
previously stored in memory **41**. If the input operator identi-
fication number **71** matches favorably with one of the autho-
rized operators previously stored in memory **41**, operation of
the vehicle is permitted; if not, operation is denied. Option-
ally, license plate, registration, insurance information, and
driver's license information can be additional fields stored
with the identification number **71**.

Use of a vehicle operator identification number **71**, such as
a driver's license, also permits different operators to use the
vehicle while retaining their distinct identity and storing
information particular to that vehicle operator, similar to a
screen name for Internet use such as the America Online
(AOL) system.

Referring back to FIG. 3D, the next four fields associated
with the sender portion **56** of the header **51** include position
72, speed **73**, acceleration or deceleration **74**, and direction
75, which are automatically created from the information
obtained from the sender's GPS receiver **35**.

The origination field **76** includes the location of the vehicle
when the vehicle was turned on. The destination field **77**
includes the destination of the vehicle. This, of course,

requires that the destination be input into the mobile unit **16**, such as when a destination is input into a navigation system. It should be understood that the mobile unit operator may override certain fields to ensure that this information is not obtained by other mobile unit operators. For example, the origination **76** and destination fields **77**, which may include personal information that the mobile unit operator does not desire other mobile unit operators to have access to, may include null data such that the sender's destination and origination will be listed as "not available" to the receiver. The vehicle operator configures their mobile unit **16** as desired to specify which fields should be transmitted with null data.

Referring to FIG. 3E, the fields associated with the receiver portion **56** of the header **51** are shown in greater detail. As discussed with reference to FIG. 3C, the broadcast or point-to-point field **64** indicates whether the communication is destined for one, multiple, or all operators. If the communication is to be broadcast to all mobile unit operators, the number of addressees field **79** is designated as zero, indicating that all operators will receive the communication. For point-to-point or point-to-multipoint communications, (whereby a plurality of operators may be included within a conversation or communication), the number of addressees field **79** includes the number of operators which will be receiving the communication. For example, if a point-to-point communication is desired, the number of addressees field **79** will include the number one (1) and address field number one **80a** will be the only field which includes an address. If a point-to-multipoint communication is desired between, for example four additional mobile unit operators, the number of addressees field **79** will include the number four (4) and address fields one through four **80a-d** will include the addresses of the four receivers to be sent the communication.

Once all of the aforementioned fields have been populated with the information, the microprocessor **40** builds each communication packet **50** and forwards the packet **50** to the transceiver **32** for transmission. The packets **50** are preferably transmitted to the base station **14**, and then forwarded to the base station controller **20**. The base station controller **20** routes all of the communication packets **50** to the specified addresses, either to one or more mobile unit operators, one or more outside entities, or both. This routing function is the same as an Internet router, whereby the destination address or addresses are read by the router and the communication packet **50** is forwarded to those addresses. If the communication packet **50** is to be forwarded to multiple addresses or broadcast to all addresses, the base station controller **20** provides such a routing function.

The base station controller **20** may also confirm to sender whether or not a signal has been received by the recipient. In an alternative embodiment, each communication may require a confirmation packet be sent from the recipient to the sender to provide the confirmation. Using such an embodiment, the sending mobile unit operator will know whether or not the communication packet **50** has reached its destination.

Although the present invention has been explained with reference to a plurality of base stations **14** and a base station controller **20**, the system **10** can also use technology similar to Bluetooth wireless technology. Using technology such as Bluetooth allows mobile units and base stations to communicate through other mobile units and base units (i.e., repeaters). This permits a wireless interconnect between mobile devices, and between mobile devices and their peripherals. The mobile devices can form a secure piconet and communicate among the connected devices. Accordingly, using this

technology, mobile units **16** can talk directly to other mobile units **16** without the intervention of the base stations **14** and the base station controller **20**.

It is intended that the present invention be used with any type of wireless communication standard including Bluetooth or other wireless or data transmission standard. The particular standard used in transmitting the data is not critical since there are many types of wireless technologies and standards that can be used to transfer information between mobile units **16**. It should be recognized that any of the communications could be encrypted by currently known technologies so that only certain authorized mobile units can communicate with each other. For example, if two users were communicating with one another and either requested a private conversation, the system can immediately encrypt their communication.

As should be understood by those of skill in the art, if the address of the receiver is outside of the system **10** and must be routed via the PSTN **22**, the base station controller **20** formats the communication packet **50** in a format that may be handled by the PSTN **22**. Although the present invention has been explained using a general packet **50** "structure" as illustrated by FIGS. 3A-3F, this structure is intended to serve as an example of the information to be transmitted by the system **10** in each communication. It is not the intention herein to specify a new communication standard, since the present invention may be utilized with any current or future wireless communication standard. For example, the packets **50** transmitted over the vehicle communication system **10** may use the Internet protocol (IP) format, such that they may be transmitted seamlessly to any communication system which uses the IP format. The discussion of the particular format and/or conversion to another format form forwarding over the PSTN **22** is outside the scope of the present invention.

As shown in FIGS. 4A and 4B, the memory **41** is used to store information which populates the aforementioned fields. As will be described in greater detail hereinafter with reference to FIG. 4C, the memory **41** is also used to store other detailed information which may be helpful to the mobile unit operator, other mobile unit operators, the base station controller **20**, or law enforcement agencies. The information stored in memory **41** may originate from a received communication, or may be input into the mobile unit via the AVI **46**. For example, information that is specific to a particular operator, such as those fields illustrated in FIG. 4C, may be input by the mobile unit operator via the AVI **46**.

Referring to FIG. 4A, one of the uses of the memory **41** is to automatically store a current vehicle activity log **90** and previously entered logs. The vehicle activity log **90** includes a plurality of fields including the time **90a**, date **90b**, position **90c**, speed **90d**, acceleration/deceleration **90e**, and direction **90f** of the vehicle. This log **90** is updated on a periodic basis as determined by the mobile unit operator or can be automatically updated by the system. For example, private individuals may desire the log **90** to be updated every 15 minutes whereas commercial businesses may require the log **90** to be updated every 15 seconds or even less. It should be realized that the vehicle activity log **90**, if updated on the order of fractions of a second, would be useful during accident reconstruction.

Referring to FIG. 4B, a vehicle communication log **92** is shown. The communication log **92** includes the following fields: the time of the communication **92a**; the date of the communication **92b**; an indication of whether the communication was incoming or outgoing **92c**; the address(es) of the communicating entity **92d**; the priority of the communication **92e**; an indication of whether the communication is broadcast or point-to-point **92f**; an indication of whether the communi-

9

cating entity is within the system or outside the system **92_g**; the security level of the communicating entity **92_h**; an indication of whether the communication is data or voice **92_i**; an indication of whether the communication is information or control **92_j**; and the actual contents of the communication **92_k**. The vehicle communication log **92** continually tracks each ongoing communication and stores the contents of the communication in the contents field **92_k** and all of the related information in the remaining fields **92_{a-j}**.

Referring to FIG. 4C, a mobile unit operator may input via the AVI **46** a plurality of fields related to the specific user and/or vehicle in a user log **105**. One example of a user log **105** is shown in FIG. 4C which includes the following fields: registration number **105_a**; insurance company **105_b**; insurance policy number **105_c**; vehicle make **105_d**; vehicle model **105_e**; vehicle color; **105_f**; other identifying information **105_g**; vehicle model year **105_h**; EZpass number **105_i**; garage parking account number **105_j**; garage door access code driving record **105_k**; and credit card information **105_m**. There is no limit to the number of fields which may be stored in the user log **105**, and all fields can be defined by the mobile unit operator. Since many of these fields include sensitive information, the mobile unit operator may decide not to send any information from the user log **105** and the microprocessor **40**, when constructing the data packets, will place null data in those fields.

The procedure utilized by the microprocessor **40** upon receipt of a communication packet **50** is shown in FIG. 5. The microprocessor **40** first determines whether the incoming packet **50** is addressed to the specific mobile unit **16**. Accordingly, at step **502**, the microprocessor determines whether the incoming packet is a broadcast, and at step **504**, the microprocessor determines whether the specific address matches the mobile unit address. If either of these determinations is affirmative, the new packet is stored (step **506**). The microprocessor then determines if there are other communication packets pending for processing (step **508**). If no other packets are pending, the new packet is processed (step **510**). If applicable, any packets in the queue are reprioritized in accordance with the priority of each packet (step **512**) which, in the case where no other packets are pending, would not be necessary. The microprocessor then goes on to reviewing the next packet step (**514**).

If it has been determined in step **508** that other packets are pending, the priority of all of the pending packets are reviewed (step **516**) and a determination is made (step **518**) whether the pending packets have a lower priority than the new packet. If the new packet has a higher priority than the pending packets, the microprocessor halts processing of the pending packet currently being processed (step **520**), re-stores the pending packet into memory (step **522**), and proceeds with processing the new packet (step **510**).

If, however, the pending packets do not have a lower priority than the new packet, the microprocessor stores the new packet in a queue with all other pending packets (step **524**) and continues to process the pending packet (step **526**). In this manner, the microprocessor **40** is able to process higher priority packets first, and delay processing of lower priority packets to a more appropriate time when the microprocessor has the proper resources.

Optionally, even if the microprocessor determines in steps **502** and **504** that the communication is not addressed to the particular mobile unit **16**, either as point-to-point communication or as part of a broadcast communication, the microprocessor may still undertake minimal processing of such packets. This is performed in step **530** whereby a contact log is created.

10

As shown in FIG. 4D, the contact log **110** may include a minimum number of fields such as the time **110_a**, date **110_b**, address **110_c**, color **110_d**, make **110_e**, and model **110_f** of the vehicle related to the incoming communication packet **50**. The number and type of fields is determined by the mobile unit operator. The payload of the packet may not be stored. The contact log **110** is used by the microprocessor **40** to search for "matches" with other mobile unit operators. Upon request by the mobile unit operator, the microprocessor **40** searches the contact log **110** for any addresses (i.e., sending addresses) that have multiple entries in the log **110**. Once the microprocessor **40** searches the contact log **110** and outputs the addresses which show up on the contact log **110** greater than a certain frequency threshold as set by the mobile unit operator, the operator can determine whether those addresses should be placed in a "commuter" log; which is a list of mobile unit operators as identified by their addresses.

This information is provided to the mobile unit operator via the AVI **46**. This permits the operator to identify, either graphically as located on a real-time map or via a list, other mobile unit operators which may be in the vicinity during a certain portion of the day. For example, during a commute to work if other mobile unit operators are typically within the vicinity of the present mobile unit operator during a certain time of day, a "partner log" may be created by each mobile unit operator to permit mobile unit operators to identify, contact and establish a rapport with other mobile unit operators.

Since the communication packet headers **51** include very detailed information about other mobile units **16**, the system **10** can provide extreme flexibility in contacting other mobile unit operators in the vicinity. For example, if a mobile unit operator observes a vehicle that they would like to establish a private conversation with, the operator may command the mobile unit **16** to "talk" to the blue car. If more than one mobile unit **16** is in a blue car in the vicinity, the microprocessor **40** can filter the commuter log to vehicles having the color blue. If more than one blue car was in the vicinity, the microprocessor **40** presents the make and model of each blue car and requests further instructions.

Since all of the detailed information is available in the packet header **51**, the system **10** can provide the speed, direction, and location of the other vehicle in relation to the present vehicle. This information is also important in order to evaluate whether another mobile unit **16** will be available for a conversation having a duration of a minimum length. For example, if a mobile unit operator notes that one of the mobile unit operators on his partner log is currently traveling in the vicinity, and the mobile unit operator would like to establish communications with the other mobile unit operator, the system **10** can calculate the duration of a potential conversation based upon the speed and direction of both vehicles and their ultimate destinations, if available. The system **10** can combine that information and advise both mobile unit operators by an audible alarm or a voice message that there is a certain amount of time left in the conversation. The microprocessor **40** can also filter out any mobile units **16** that will not be in the range long enough to establish a reasonable conversation.

At step **540**, the microprocessor **40** reviews all incoming communication packets **50** to determine if a particular communication packet **50** originates from an address that is on the operator's partner log. As the communication packets **50** are reviewed at step **540**, the mobile unit operator is notified and can decide whether or not they want to establish a communication with the particular mobile unit operator having the address that has compared favorably with the partner log. It should be noted that mobile unit operators can block out transmissions being received from particular individuals or

cancel conversations at anytime. Further, mobile unit operators can require information such as drivers license, license plate, and registration to be provided before they allow any other transmissions to be received.

Referring to FIG. 6, the procedure for processing communication packets 50 by the microprocessor 40 is shown. The microprocessor first parses the packets into separate fields (step 602) and stores all of the fields that do not require additional processing (step 604). The microprocessor then determines whether a packet includes a data communication by viewing the communication identifier field (step 606). If the microprocessor determines that the packet is not carrying a data communication, then it is a voice communication and the microprocessor processes the communication as such (step 608).

If the packet includes a data communication, the microprocessor must make a determination whether the data communication is a control communication (step 610). If it is not a control communication, the data communication is an information communication and it is processed as such (step 612). Examples of packets which include information communications include audio, video, and text files that are downloaded over the Internet, facsimile transmissions, and transmissions from peripheral devices such as laptop computers, handheld devices, and the like.

If it has been determined that the packet includes a control communication, the communication is processed as such (step 614). The microprocessor compares the control instruction to the security level required (step 616). This includes reviewing the security field, including the optional security access code. If the security access code is proper (i.e., authorized), the security level is reviewed and the microprocessor makes a determination of whether the security level is sufficient (step 618). If so, the microprocessor performs the control instruction (step 620). If not, the microprocessor generates a transmission to the sender of the control instruction that they are not authorized to control the particular mobile unit (step 622). The microprocessor 40 also notifies the particular mobile unit operator that a control attempt was made and was unsuccessful. This will alert the mobile unit operator that someone may be utilizing the system for subversive purposes. Optionally, the system may require the mobile unit operator to authorize their vehicle to accept a control instruction, prior to undertaking any control instructions. Once the processing of the packet is performed, the microprocessor goes to the next packet (step 624).

With respect to the step of performing a control instruction (step 620), this may include instructions-for the microprocessor to exert electromechanical control over certain aspects of the vehicle's operation, or may simply include a request for the microprocessor to upload data to the recipient. For example, if the control instruction is a request for the microprocessor to upload information, the microprocessor may upload one or a plurality of the fields shown in FIG. 4C.

In a first example relating to a request for information, if the vehicle is entering a toll booth which utilizes the EZpass system, the control instruction from the transmitting toll booth may request that the EZpass number be transmitted. The microprocessor 40 will transmit the number in the EZpass number field shown in FIG. 4C in response thereto.

In a second example relating to a request for information, a request for information may occur in a parking garage, gas station, or any other establishment which requires payment from the vehicle operator, such as a drive-in fast-food restaurant. In this example, the vehicle operator will drive up to an ordering kiosk and order the desired food. After the food has been ordered, the driver pulls up to the window whereby the

proper food order is presented to the driver. Meanwhile, the restaurant's communication system sends a communication requesting the credit card information for billing purposes. The information shown in the credit card information field 105m of FIG. 4C can then be presented to the communication system of the restaurant for payment. Optionally, the vehicle operator may require that they must first approve of any information being released. Moreover, the communication log for both the fast-food restaurant and the vehicle may store the communication noting the charge amount. For the vehicle it can be a "virtual receipt".

With respect to an instruction which exerts electromechanical control over the vehicle, as shown in FIG. 2, the electromechanical interface 44 will interface with those systems of the vehicle over which the mobile unit 16 has control. These systems may include the radio, lights, horn, steering, breaking, and any other electromechanical systems of the vehicle. For example, if a mobile unit operator is listening to their favorite radio station and a point-to-point or broadcast communication is received by the mobile unit 16, the microprocessor 40 through the electromechanical interface 44 will stop the radio, or turn down the volume of the radio, so that a conversation can commence.

It should be understood that due to the amount of information set forth in the header 51 of each communication packet 50, the system 10 provides flexibility in, processing and filtering communications. For example, the microprocessor 40 can be programmed to accept only communications from certain makes and models of vehicles. As such, the system 10 set up as part of a Mercedes can be programmed by the manufacturer to be able to talk to only other Mercedes operators.

The present invention has the ability to increase safety to drivers and can be a valuable resource for emergency services personnel and a law enforcement personnel. For example, emergency vehicles can automatically send signals to warn motorists that an emergency vehicle is approaching. This may supplement the emergency light and siren which are standard on emergency vehicles. Since the packets 50 are prioritized, a communication sent from an emergency vehicle in transit may have the highest priority and can override all other signals having a lower priority. At the scene of an accident, the signal output from an emergency vehicle may) at a slightly lower priority, transmit instructions for avoiding the accident scene and may provide detour instructions.

With respect to motor vehicle code enforcement, law enforcement agencies can automatically review the status of a driver, vehicle registration, and insurance and may provide warnings for expired or soon to be expired license, registrations, or insurance policies.

If an unauthorized operator has gained access to the vehicle and has not input the proper operator identification number, the microprocessor 40 can transmit an emergency instruction to alert law enforcement agencies that the vehicle has been stolen. The signal sent from the vehicle can automatically include the vehicle's position, speed, acceleration or deceleration rate, and direction. Law enforcement officials may send an instruction in response to limit the vehicle speed to no greater than 30 miles per hour until the unauthorized operator of the vehicle is apprehended. It should be noted that various fixed units may be strategically placed along highways, major intersections, toll booths, and bridges to monitor traffic and to relay messages back to law enforcement agencies.

Another law enforcement use can be to limit speeding of vehicles by notifying law enforcement agencies when a vehicle has exceeded a certain speed limit, e.g., 20% over the speed limit. A law enforcement official, in response, may send

13

an instruction for the vehicle to slow down or risk a traffic citation. This can eliminate the need for "speed traps" and high speed police chases.

For public safety applications, specifically located fixed units can warn drivers as the vehicle approaches a traffic light at an intersection that the vehicle must slow down or stop because it will not "make" the green light. The traffic light can make this determination based upon the speed and direction of the mobile unit and the cycle of the traffic light. Other selectively placed fixed units can warn drivers that an intersection or roadway is dangerous for various reasons, such as an accident, a sharp bend, or heavy traffic. The signals output by these locations can be periodically updated as weather and traffic conditions change. In the same manner, vehicles may be warned that a particular vehicle is driving in an erratic manner or that law enforcement officials are currently involved in a pursuit of the vehicle. The warnings to drivers are output through the AVI 46 and may include an audible warning, or may include a status light such as red, yellow, and green being located on the graphical operator interface of the AVI 46. In extreme circumstances, selectively placed fixed units may automatically overtake control of a vehicle, for example, during extremely icy conditions to slow the vehicle prior to the danger zone.

It should be noted that although the mobile units 16 were described hereinbefore as being located in a vehicle or in a fixed location, they can be incorporated as part of a cellular phone or other portable communication device.

When the mobile unit 16 is incorporated into a portable communication device to be used outside a vehicle, the electromechanical interface 44 can be eliminated

Non-vehicle related information can be entered into the user log 105. This information can include personal information such as the user's name, age, sex, occupation, hobbies, interests, and picture and is used to create a user profile. The user profile can be expanded to include any additional personal information desired by the user; the foregoing list is meant to be exemplary and not limiting.

The user profile is utilized to search for other users having a predefined set of characteristics, similar to a matchmaking process. In one embodiment of the present invention, the search can be initiated based upon the physical proximity of one user to another (a requesting user and one or more target users). It is noted that a single mobile unit can be both a requesting unit and a target unit at the same time. When two or more mobile units are within a predetermined distance (which is set by the requesting user), the requesting user's mobile unit polls the other mobile units in the area to determine if there is a match. The match based upon distance can also be set to locate target units that are beyond a predetermined distance.

If a match exists, both the requesting user and the target user are notified via their respective mobile units and can then begin a conversation. It is noted that a "conversation" is not limited to a voice communication, and can include text messages and the like. The amount of information initially exchanged between the mobile units can be set by each user. For example, only limited information can be sent during the initial exchange, and the users can then disclose additional information as the conversation between the users progresses. The users can designate groups of information items to facilitate disclosure during a conversation. For example, an initial exchange could include a first group of information, such as the user's name, age, and sex. Subsequent exchanges could include additional groups of information, such as contact information (telephone number, e-mail address, and home address).

14

Additional criteria for a match to occur can also be set. For example, a requesting user can require that a target user disclose a minimum amount of information to be considered for a match. If that minimum amount of information is not disclosed, then no match will occur even if it otherwise would. The same criteria can be used in reverse; a target user can select to not match with a requesting user if the requesting user does not disclose a minimum amount of information.

In addition to the more "permanent" type of information entered into a user's profile, temporary items can also be entered, such as "having a bad day, looking for sympathy", "let's dance the night away", etc.

Another example of a use of the system of the present invention is in connection with yard sales. A user having a yard sale can provide categories of items for sale. The categories can be selected from predefined categories stored on the mobile unit or can be created by the user. A potential purchaser can designate certain categories in their user profile, and when within a certain distance of a yard sale containing a designated category of items, the purchaser can receive information regarding the yard sale and be directed to the yard sale. Optionally, if the mobile unit is interfaced to a navigation system, the mobile unit can display the location of the yard sale and the user can be provided with directions to the yard sale.

The present invention is particularly adaptable for interfacing with the Internet and providing a wealth of information for all mobile unit operators. In one Internet-related embodiment such as vehicletalk.com, the Web site permits storage of information and system administration through the Internet. A system administrator operating at the Web site or the base station controller 20 monitors and tracks all mobile units 16. Through the system administrator, the fixed locations are provided with weather and traffic updates or advertisements which are specifically geared to the immediate vicinity of the fixed unit. In this manner, advertisers advertise both on the vehicletalk.com Web site and advertise their companies and products as vehicles approach or pass certain properties, stores, or business locations. This also permits stores, to provide information to vehicles arriving or leaving the place of business, such as directions for parking or thanking them for their patronage.

The system administrator also provides centralized house-keeping functions in order to track all different types of information that are typically a nuisance to vehicle operators, such as the date their registration and insurance policy expire. The system administrator also tracks general vehicle maintenance information and traffic violation records. The tracking of vehicle maintenance can be particularly useful when a recall notification is issued from a manufacturer or even when regularly scheduled maintenance is required.

In a second Internet-related embodiment, the system 10 is used to aid law enforcement officials and insurance companies to determine when a traffic accident has occurred and to collect all of the detailed information regarding the traffic accident. This function is centralized in a Web site such as vehicleaccident.com. When an accident occurs, a signal is automatically sent to all vehicles involved (or in the vicinity) to transmit all pertinent information to vehicleaccident.com. This can include time, speed, direction, acceleration and deceleration, duration of trip, and other pertinent information such as the vehicle maintenance records, traffic citation records, insurance, and registration information. The system 10 permits all of this information to be stored in a centralized location at vehicleaccident.com for later review by law enforcement officials. The system 10 also stores law enforcement official reports regarding the accident.

15

The insurance industry should benefit by having mobile unit operators agree in advance to accept a fact finding by an officer utilizing all of the information from the mobile units 16. This avoids costly litigation and subrogation. A mobile unit operator accepting these terms may be permitted special insurance discounts for agreeing to such.

In another embodiment, the system can provide mobile units that do not include a GPS unit. It can be similar to portable phone(s) operating on the same frequency(s). If a user tunes their radio to a particular station, they can receive a transmission through their car stereo system. The mobile unit, in this instance, can have the microphone inside of it so a user can speak "hands free". This embodiment allows the mobile unit to beep (or voice activate) if another user comes within range, advising both mobile units that they have someone they can talk to. The mobile unit detects another mobile unit by actually receiving the signal of the other mobile unit. Accordingly, positioning of either mobile unit is not required.

Numerous other variations and modifications can be made to the present invention. For example, the profile searching capability may be turned on and off via a voice command, a graphical user interface, or other means. The profile search can also be automatically set up to be turned on or off on specific days or at a specific time of day. The user profile can be stored in the mobile unit, at an Internet site (either a server or a client site), at a base station, at a base station controller, or at an entity located through the PSTN.

The system may display all potential matches for the requesting user to review, and let the requesting user select the target user to contact. An additional option is to display the target user's physical location on the mobile unit, determined relative to the requesting user's location, or vice versa. The format for entering the profile information can be predefined, to ensure consistency in the formatting of the information entered, which can lead to a higher matching percentage. The user profile can include a specific time frame in which the user is available for contact, and some of the profile information can be available based upon certain times; for example, a contact number can change depending on whether the user is at home or at work. If a match is attempted to be made outside the time frame, some of the information can be blocked from disclosure.

The system can also validate or otherwise verify the information in a user's profile, to provide a layer of security to potential contacts. The system may charge a fee for the verification, and certain information can be locked to prevent changes once verified.

The system can provide multi-party conversations, either with or without a moderator.

Although the invention has been described in part by making detailed reference to preferred embodiments, such detail is intended to be instructive rather than restrictive. It will be appreciated by those skilled in the art that many variations may be made in the structure and mode of operation without departing from the scope of the invention as disclosed in the teachings herein.

What is claimed is:

1. A method of matching users in a wireless communication system, comprising:

storing identifying information for at least two mobile units, comprising a requesting unit and a target unit;
searching at least one target user by a requesting user, the searching comprising comparing the identifying information with information provided by the requesting unit;

16

filtering the target unit based on a speed, a direction and a location of the target unit in relation to the requesting unit;

calculating in real time during a communication an amount of time left in the communication based on the speed, the direction and the location of the target unit in relation to the present location of the requesting unit; and
exchanging communication packets between the requesting unit and the target unit, each communication packet comprising a header and a payload, the header comprising the identifying information.

2. The method according to claim 1, further comprising notifying the users when the information provided by the requesting unit matches the identifying information of the target unit.

3. The method according to claim 1, further comprising initiating a communication between the requesting unit and the target unit.

4. The method according to claim 1, wherein each mobile unit functions as the requesting unit and the target unit.

5. The method according to claim 1, wherein the storing comprises entering the identifying information, the identifying information comprising temporary identifying information.

6. The method according to claim 1, wherein the storing comprises storing the identifying information on a mobile unit.

7. The method according to claim 1, wherein the storing comprises storing the identifying information on the wireless communication system.

8. The method according to claim 1, wherein the searching comprises comparing the identifying information associated with the at least one target user located within a predetermined distance of the requesting unit.

9. A method for matching users in a wireless communication system, comprising:

providing each user with a mobile unit, comprising a requesting unit and at least one target unit;
storing identifying information;
receiving information provided by an operator of the requesting unit;

comparing the identifying information of each target unit with the information provided by the operator of the requesting unit;

determining a group of at least one target unit having identifying information that matches the information provided by the operator of the requesting unit and which is filtered according to a speed, a direction and a location of the target unit in relation to the requesting unit;

notifying users of matching target units in the group of at least one target unit when the information provided by the operator of the requesting unit matches the identifying information of at least one target unit;

initiating a communication between the requesting unit and the matching target units using at least one communication packet comprising a header and a payload; and
calculating in real time during the communication an amount of time left in the communication based on the speed, the direction and the location of the target unit in relation to the present location of the requesting unit.

10. The method according to claim 9, wherein mobile unit functions as the requesting unit and one of the at least one target unit.

11. The method according to claim 9, wherein the storing comprises storing temporary identifying information.

17

12. The method according to claim 9, wherein the storing comprises storing the identifying information on a mobile unit.

13. The method according to claim 9, wherein the storing comprises storing the identifying information on the wireless communication system.

14. The method according to claim 9, wherein the comparing comprises matching a predetermined number of items of the identifying information of each of the at least one target unit with the information provided by the operator of the requesting unit.

15. The method according to claim 9, wherein the notifying comprises providing a visual indicator to each user.

16. The method according to claim 9, wherein the notifying comprises an audio indicator to each user.

17. The method according to claim 9, further comprising detecting each at least one target unit within a predetermined distance of the requesting unit.

18. The method according to claim 17, wherein the detecting is performed by a global positioning system device contained in each mobile unit.

19. A mobile unit for matching users in a wireless communication system, comprising:

a memory storing identifying information relating to a user of the mobile unit; and

a microprocessor operatively cooperating with the memory; the microprocessor operative with control instructions stored in the memory to perform:

searching at least one target user by a requesting user, the searching comprising comparing the identifying information with information provided by the requesting user;

filtering a target unit based on a speed, a direction and a location of the target unit in relation to the requesting user;

calculating in real time during a communication an amount of time left in the communication based on the speed, the direction and the location of the target user in relation to the present location of the requesting user; and

18

exchanging communication packets between a requesting unit and the target unit, each communication packet comprising a header and a payload, the header comprising identifying information.

20. The mobile unit according to claim 19, wherein the processor is further operative with the control instructions stored in the memory to notify the users when the information provided by the requesting user matches the identifying information.

21. The mobile unit according to claim 19, wherein the mobile unit functions as the requesting unit and the target unit.

22. The mobile unit according to claim 19, wherein the processor is further operative with the control instructions stored in the memory to initiate a communication between the requesting user and the target user.

23. The mobile unit according to claim 19, wherein the storing comprises entering the identifying information, the identifying information comprising temporary identifying information.

24. The mobile unit according to claim 19, wherein the storing comprises storing the identifying information on a mobile unit.

25. The mobile unit according to claim 19, wherein the storing comprises storing the identifying information on the wireless communication system.

26. The mobile unit according to claim 19, wherein the searching comprises comparing the identifying information associated with the at least one target user located within a predetermined distance of the requesting user.

27. The mobile unit according to claim 19, wherein the mobile unit comprises a motor vehicle.

28. The mobile unit according to claim 19, wherein the mobile unit comprises a cellular telephone.

29. The mobile unit according to claim 19, wherein the mobile unit comprises a personal digital assistant.

30. The mobile unit according to claim 19, wherein the mobile unit comprises a wireless communication device.

* * * * *

UNITED STATES PATENT AND TRADEMARK OFFICE
CERTIFICATE OF CORRECTION

PATENT NO. : 8,224,346 B2
APPLICATION NO. : 12/036732
DATED : July 17, 2012
INVENTOR(S) : Richard B. Himmelstein

Page 1 of 1

It is certified that error appears in the above-identified patent and that said Letters Patent is hereby corrected as shown below:

ON THE TITLE PAGE

Item (65) Prior Publication Data, after “US 2008/0248785 A1 Oct. 9, 2008”, insert the following:

--Related U.S. Application Data

Continuation of application No. 10/705,065, filed on Nov. 10, 2003, now abandoned, which is a continuation-in-part of application No. 09/659,074, filed on Sep. 11, 2000, now Pat. No. 6,647,270.

Provisional application No. 60/153,424, filed Sep. 10, 1999.--.

IN THE SPECIFICATION

At column 1, line 8, after “This application”, delete “claims priority from” and insert therefor

--is a continuation of--.

At column 1, line 12, after the word “turn”, delete “claims priority from” and insert therefor

--claims the benefit of--.

Signed and Sealed this
Twenty-fifth Day of June, 2013



Teresa Stanek Rea
Acting Director of the United States Patent and Trademark Office