



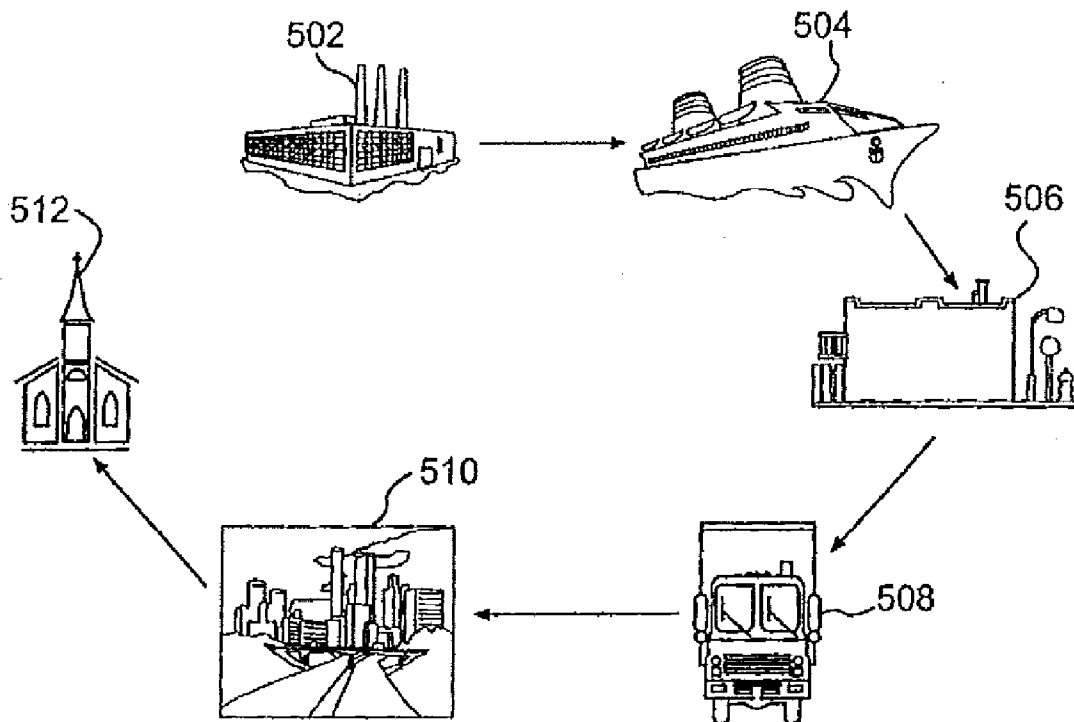
US 20120289251A1

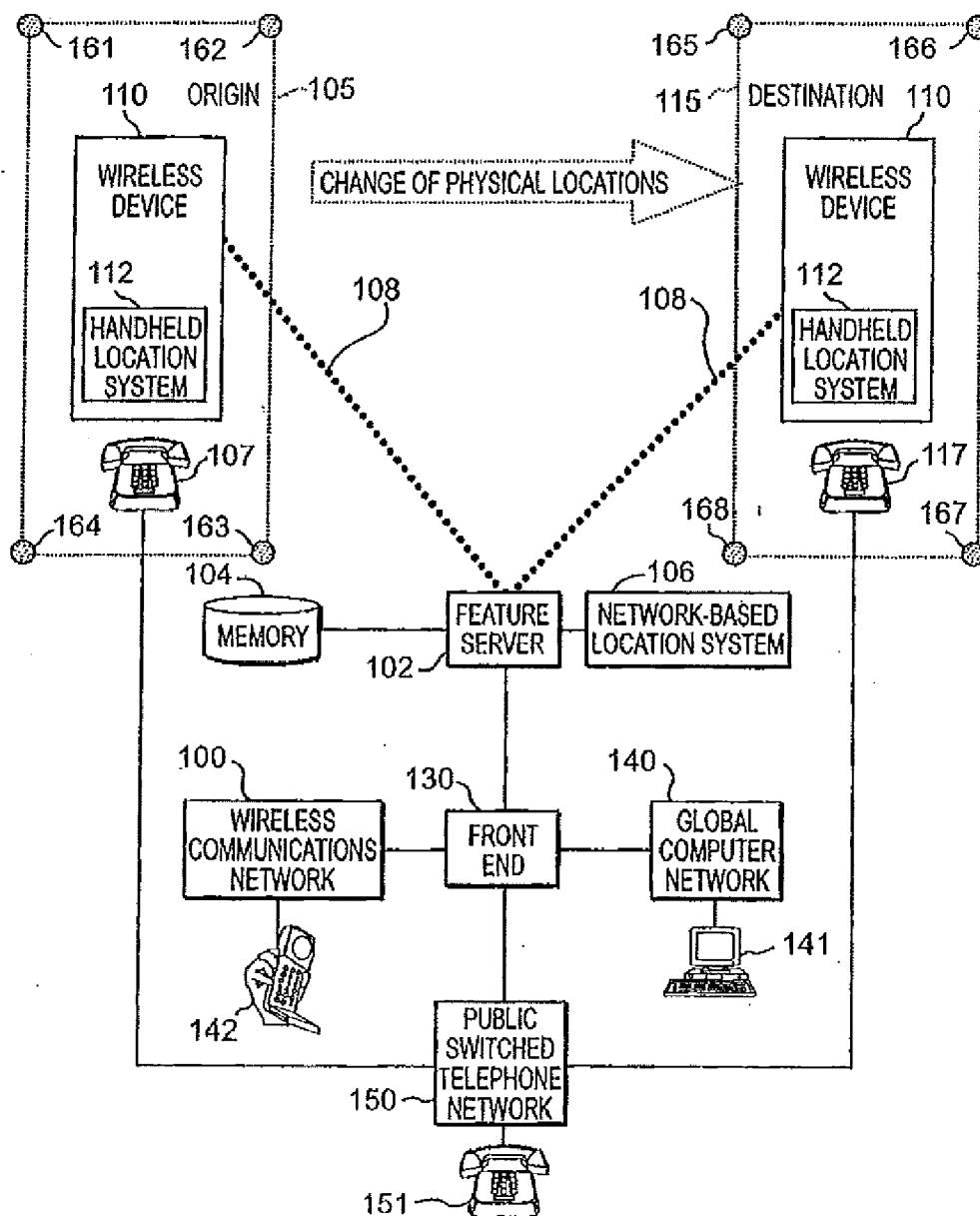
(19) **United States**(12) **Patent Application Publication****Moton, JR. et al.**(10) **Pub. No.: US 2012/0289251 A1**(43) **Pub. Date: Nov. 15, 2012**(54) **SYSTEM AND METHOD FOR USING  
LOCATION INFORMATION TO EXECUTE AN  
ACTION****Publication Classification**(51) **Int. Cl.**  
**H04W 24/00** (2009.01)(52) **U.S. Cl.** ..... **455/456.1**(57) **ABSTRACT**

A system and method is provided for using location information associated with wireless devices. The system includes a wireless device, a location system, and a feature server. The wireless device includes any wireless apparatus having wireless communications capabilities. The location system can generate location information pinpointing the location of the wireless device. The feature server can use the location information to determine whether to execute an action in accordance with subscriber rules. A large number of applications may be implemented to execute the action via a number of communication channels, including without limitation, a wireless communications network, a computer network, and a public switched telephone system, for example.

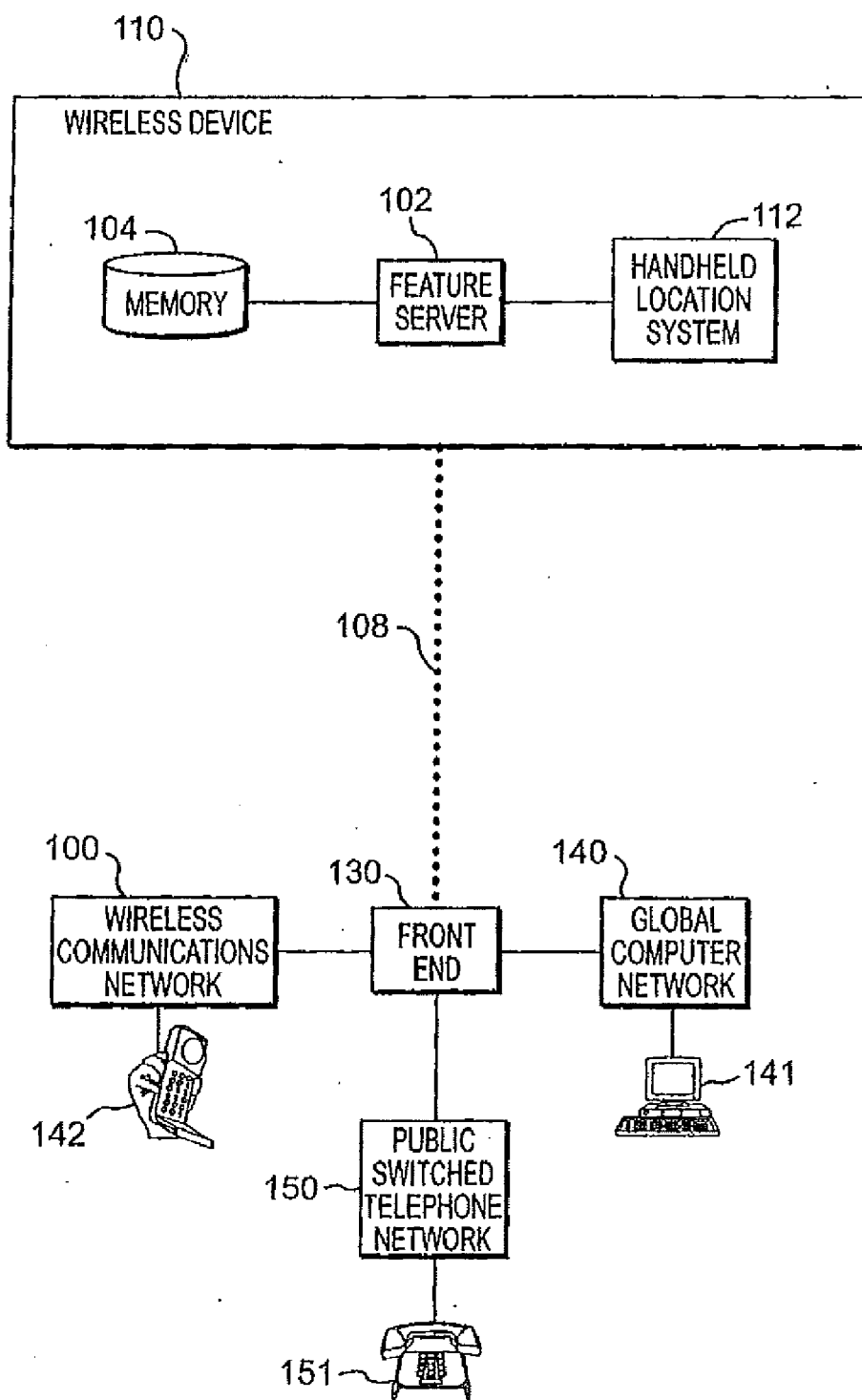
(76) Inventors: **Robert T. Moton, JR.**, Alpharetta, GA (US); **Mark J. Enzmann**, Roswell, GA (US); **Samuel N. Zellner**, Dunwoody, GA (US)(21) Appl. No.: **13/555,239**(22) Filed: **Jul. 23, 2012****Related U.S. Application Data**

(60) Continuation of application No. 12/132,104, filed on Jun. 3, 2008, now Pat. No. 8,260,239, which is a continuation of application No. 11/298,149, filed on Dec. 9, 2005, now Pat. No. 7,383,052, which is a division of application No. 09/739,340, filed on Dec. 19, 2000, now Pat. No. 7,116,977.

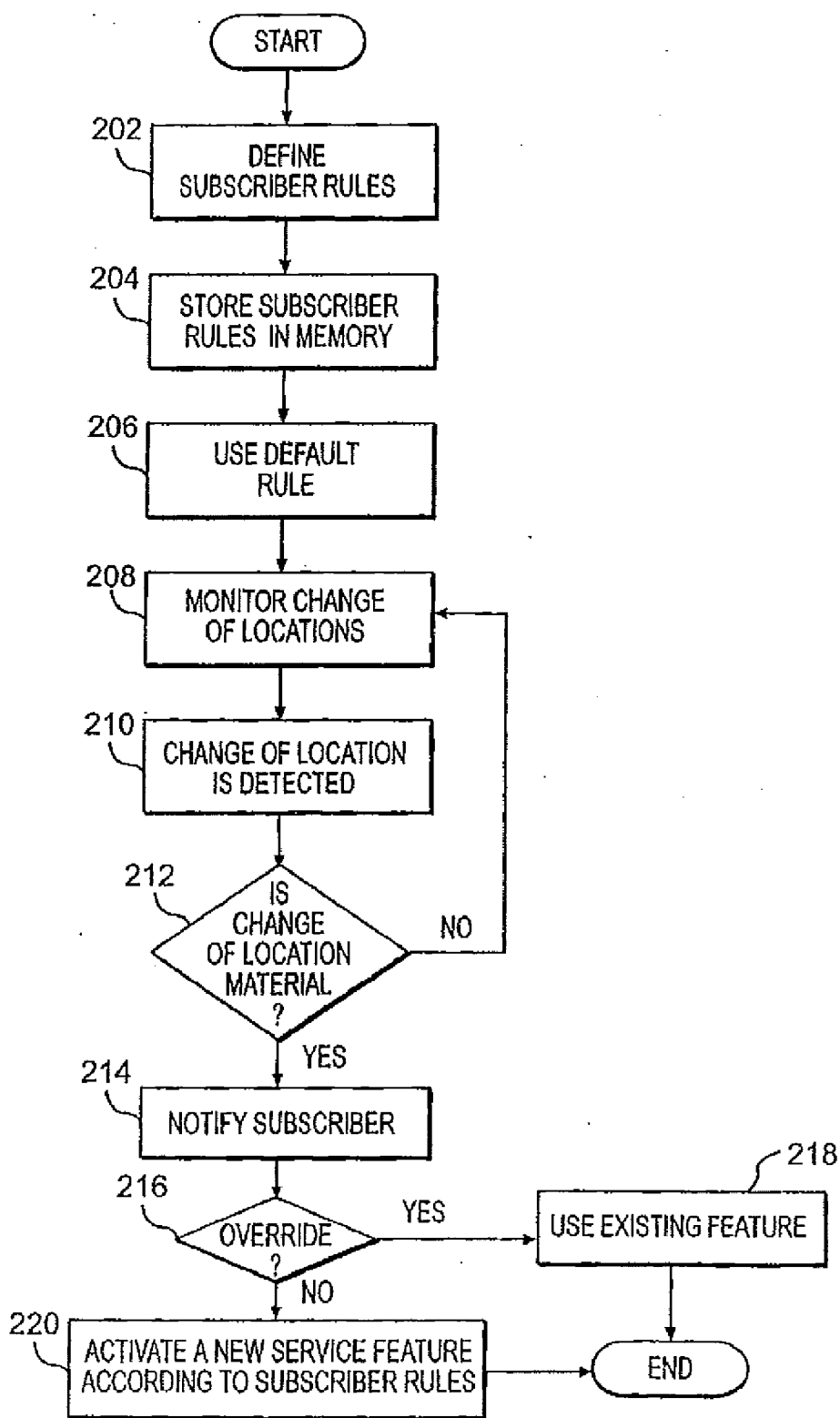




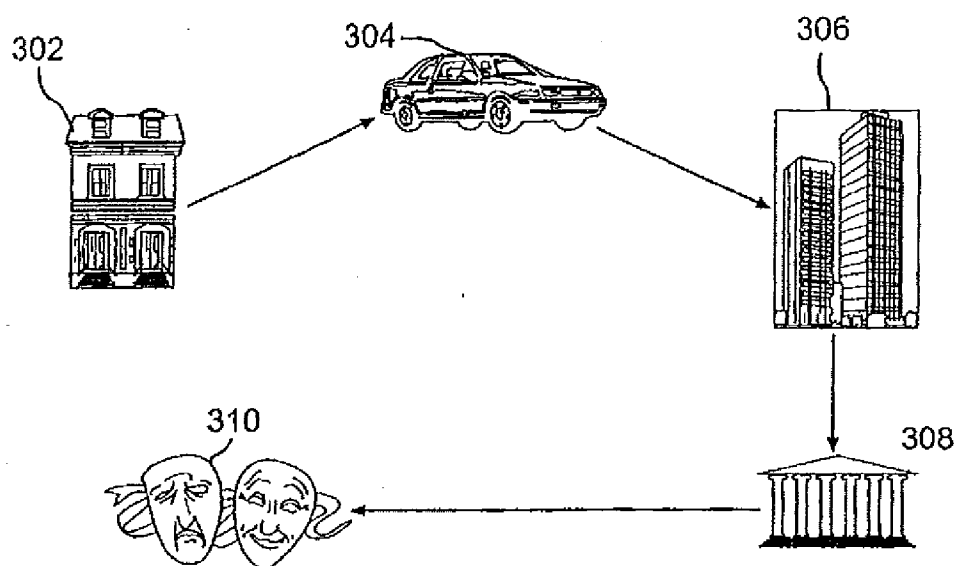
**FIG. 1**



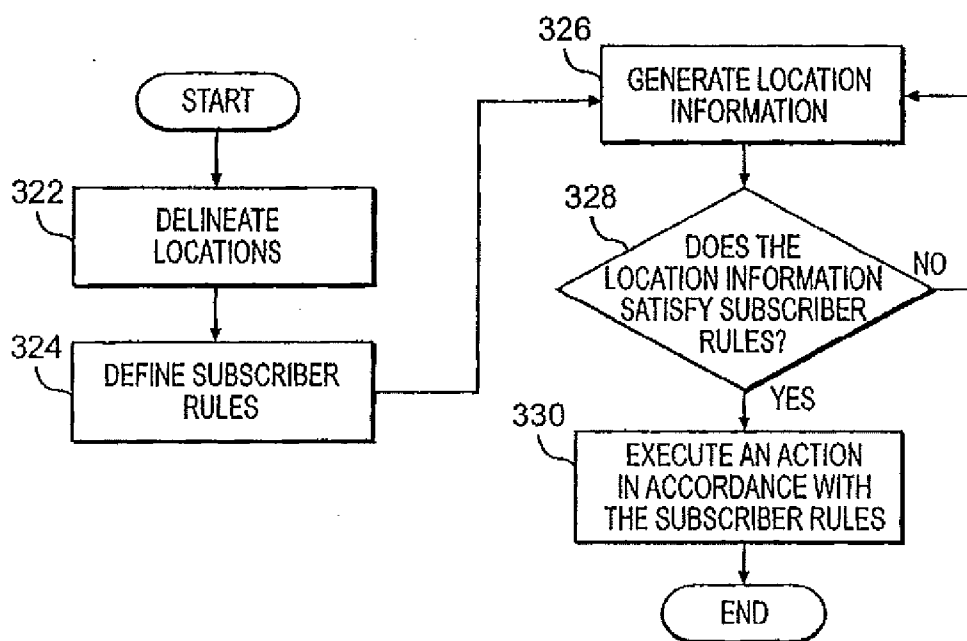
**FIG. 2**



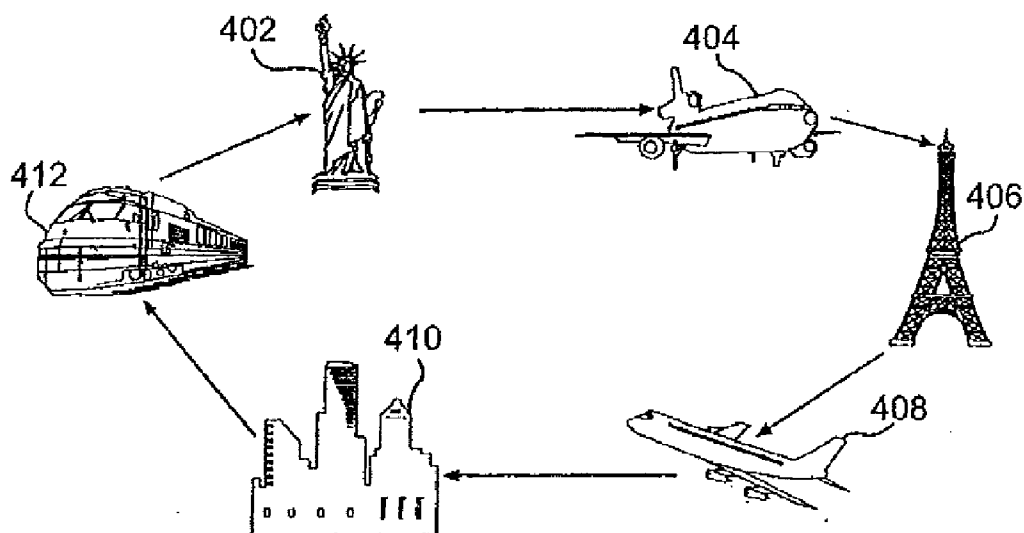
**FIG. 3**



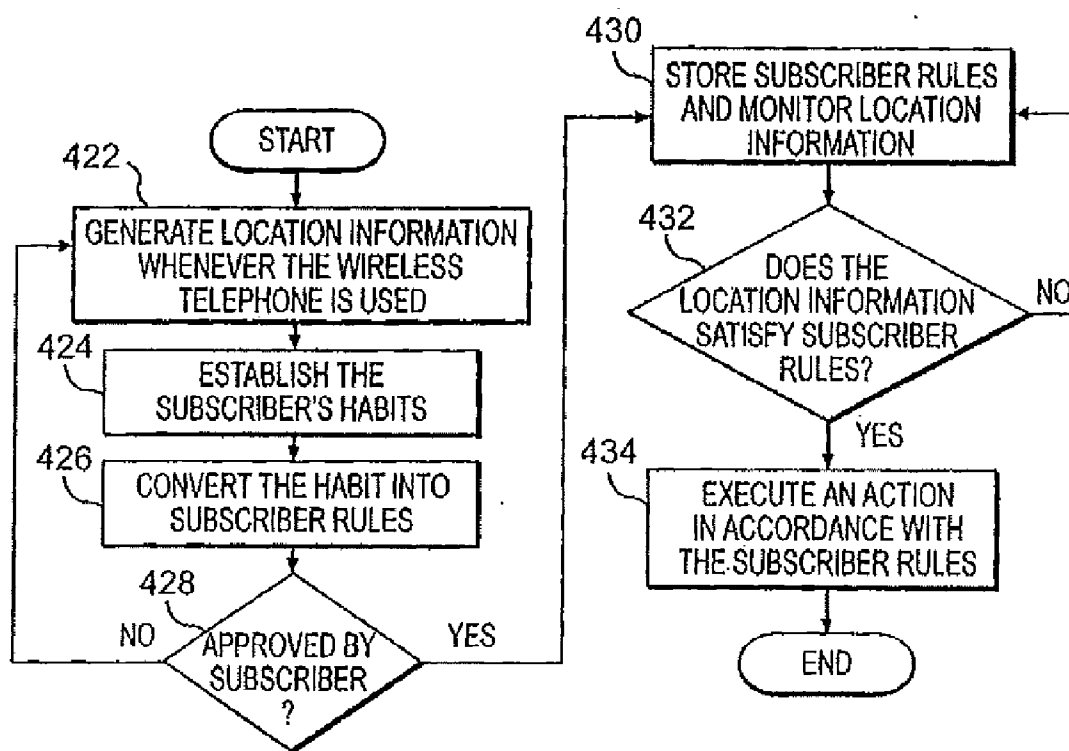
**FIG. 4**



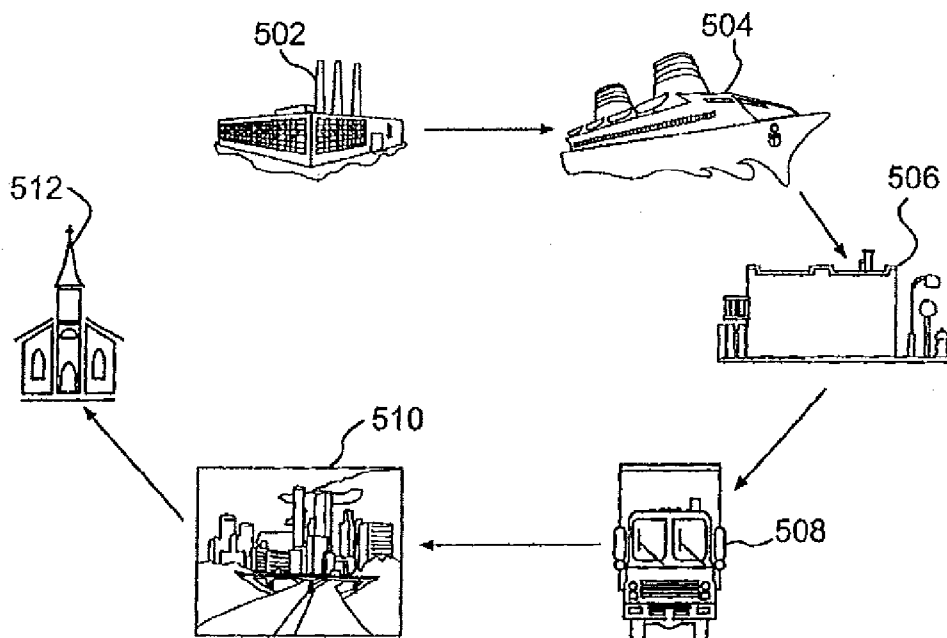
**FIG. 5**



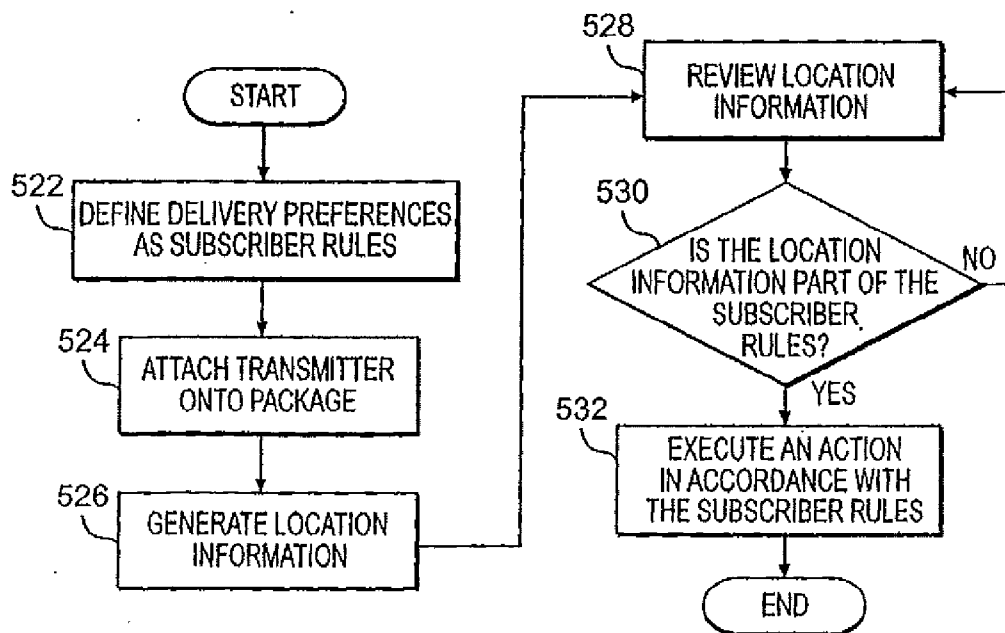
**FIG. 6**



**FIG. 7**



**FIG. 8**



**FIG. 9**

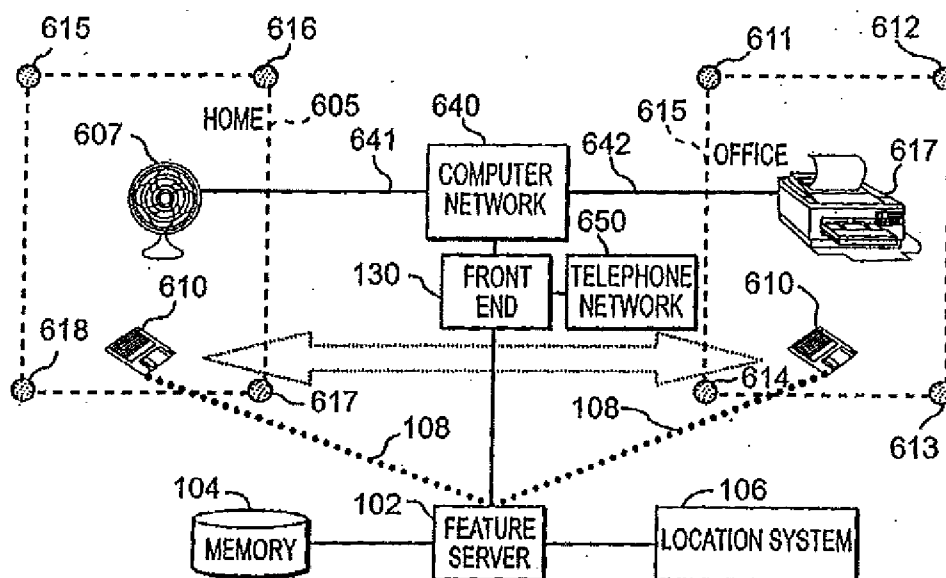


FIG. 10

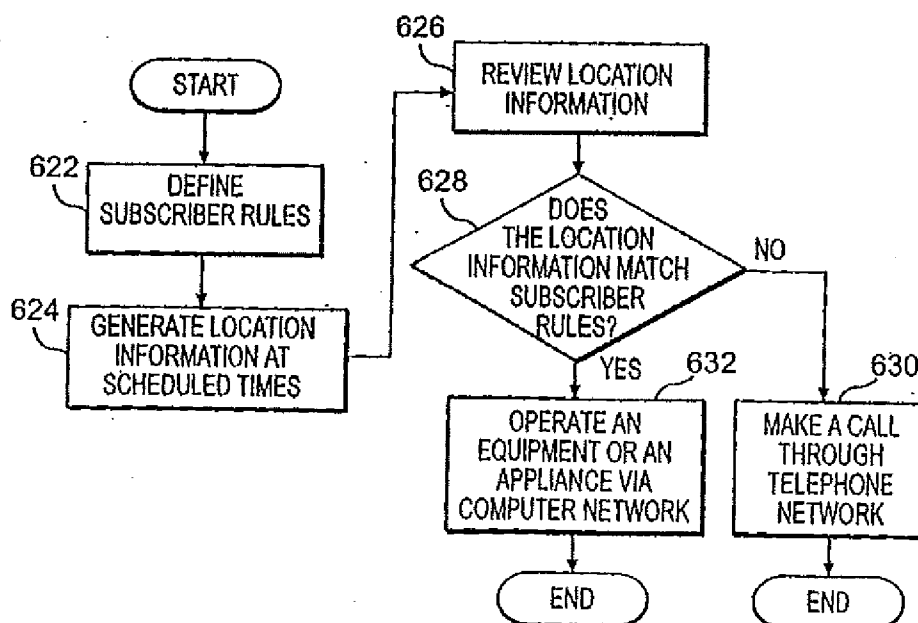


FIG. 11



## SYSTEM AND METHOD FOR USING LOCATION INFORMATION TO EXECUTE AN ACTION

### CROSS REFERENCE TO RELATED APPLICATION

**[0001]** This application is a continuation of U.S. application Ser. No. 12/132,104, filed Jun. 3, 2008, which is a continuation of U.S. patent application Ser. No. 11/298,149 filed Dec. 9, 2005 (now U.S. Pat. No. 7,383,052) which is a divisional of U.S. patent application Ser. No. 09/739,340, filed Dec. 19, 2000 (now U.S. Pat. No. 7,116,977), which are incorporated herein by reference.

### FIELD OF THE INVENTION

**[0002]** The present invention relates generally to consumer electronics and telecommunication systems, and in particular, to a system and method for using location information associated with wireless devices.

### BACKGROUND OF THE INVENTION

**[0003]** The use of wireless devices is increasing at a rapid rate. A majority of the people living in large metropolitan areas use one or more wireless devices on a daily basis. These people communicate with each other or access information on the Internet using, among other devices, wireless telephones, interactive pagers, personal digital assistants, and handheld computers. As technology continues to improve, wireless devices will become more useful: at the same time, they will decrease in size and weight, making them more portable than ever. Consequently, consumers may carry their wireless devices wherever they go. For some people, their wireless device will become indispensable.

**[0004]** The widespread use of the wireless telephones in the United States has prompted the Federal Communications Commission (FCC) to promulgate new rules related to emergency call processing. The FCC's wireless Enhanced 911 (E911) rules require certain Commercial Mobile Radio Services (CMRS) carriers to begin transmission of enhanced location and identity information in two phases. The first phase started on Apr. 1, 1998, required wireless service providers to transmit a 911 caller's number and section of the cell site from which the call is originated to a public safety answering point (PSAP). The second phase, starting on Oct. 31, 2001, requires all wireless service providers to locate two-thirds of all 911 callers within 125 meters of their physical locations. In other words, for all 911 calls received, a PSAP must be able to pinpoint 67% of the callers within 125 meters.

**[0005]** Under the FCC rules, wireless communication-networks and wireless telephones (or any wireless devices that can be used to call 911), must provide both the identity and location of the caller to a 911 dispatcher. To provide a caller's identity, the wireless device will furnish a device identification, e.g., a mobile identification number (MIN), indicating in most instances the telephone number of the device. To provide a caller's location, the wireless communication networks and wireless devices will use a network-based location system or a handheld location system installed within the wireless devices, or a combination of the two systems. An example of a handheld location system is a Global Positioning System (GPS) receiver. U.S. Pat. No. 5,663,734, which is incorpo-

rated herein by reference, discloses a GPS receiver and a method for processing GPS signals.

**[0006]** The E911 mandate has accelerated technological advances in technology. Many new innovations have been achieved to provide solutions to a wide range of problems. Although technological improvements bring unprecedented convenience to the world, they also come with some undesirable side effects. For example, the discourteous use of wireless telephones in public places such as on commuter trains or at movie theaters. In some places, such as in most courtrooms, all wireless device users must have their devices turned off to prevent distracting ringing and beeping noises. Users who forget to turn their wireless devices back on after they leave these places may miss important calls.

**[0007]** The use of wireless communications services is also expensive. For example, payment to wireless service providers for the use of wireless telephones is usually based on the amount of "airtime" consumed. The longer a user is on the telephone, the more expensive the conversation will be. Charges for use of the wireless telephone call could be significantly higher when the user is beyond his or her home market, at a location where the wireless telephone roams in a different market served by a different wireless service provider. Currently, to avoid expensive roaming charges for answering incoming calls, the user must remember to turn off the telephone when he or she leaves the home market. Alternatively, the user must remember not to answer an incoming call when the telephone rings while it is roaming.

**[0008]** The existing wireless communications technology does not allow the wireless device users (the subscribers) to activate one of more service features based on the user's physical location, i.e., without the user's manual activation of the features. For example, a wireless telephone user must manually activate a call forwarding feature subscribed to by him or her if the user wants to have all calls forwarded to his or her voice mailbox each time the user enters a public place such as a movie theater, a concert hall, or a courtroom. Once the user leaves the public place, the user must remember to deactivate the call forwarding feature. To reduce the amount of airtime used, the user must also activate a call forwarding feature to route all incoming calls intended for the wireless telephone to a home wireline telephone when the user is at home where the wireline telephone is located. Similarly, if the user wishes to accept calls intended for the wireless telephone using a wireline telephone at work, the user must manually activate the call forwarding feature to route calls to his or her office when the user is at work. In short, there is a need for a system and method to execute an action, such as routing telephone calls, based on location information pinpointing the location of a wireless device.

### SUMMARY OF THE INVENTION

**[0009]** The present invention is a system and method for using location information associated with wireless devices. The location information may be used to execute an action. The action may be executed via a number of networks, including a wireless communications network, a public switched telephone network (PSTN), a local area network (LAN), and a global computer network. The wireless device may be any wireless apparatus. For example, the wireless device may be a wireless telephone, a personal digital assistant, a handheld computer, or an interactive pager. Furthermore, a system of the present invention may be incorporated as part of a wrist-watch, an attaché case, or an automobile.

**[0010]** The present invention comprises a location system that can generate the location information pinpointing the physical location of the wireless device. In preferred embodiments of the present invention, the location information comprises point coordinates such as a longitude and a latitude. The location system can be a network-based component or it can be a handheld unit provisioned at the wireless device. A network-based location system can generate the location information using a plurality of methods. In an exemplary embodiment of the present invention, the network-based location system can generate the location information using triangulation across cell sites. An example of a handheld location system is a GPS receiver that is in communication with a constellation of GPS satellites. In preferred embodiments, both network-based and handheld location systems can be used to provide redundancy, reliability, and increased accuracy.

**[0011]** The present invention further comprises a feature server that uses the location information to execute an action through a network such as a wireless communications network, a PSTN, a LAN, or a global computer network. The feature server comprises a memory, as an integral or separate component, for storing data that includes, among other things, the location information, identity information of the wireless device, and subscriber rules. In preferred embodiments, the identity information comprises a unique identification number of the wireless device. For example, the mobile identification number (MIN) of a wireless telephone could be used as the identity information. For other wireless devices, each device's serial number may be used as the identity information. The subscriber rules may be call routing instructions, preferences for implementing a service, or other subscriber defined rules. The feature server is preferably a Wireless Application Protocol (WAP) compatible component having a wide range of wireless communication capabilities. For example, the feature server can communicate with various networks to process telephone calls and to operate a wide range of machines including office equipment and home appliances.

**[0012]** Preferred embodiments of the present invention comprise a front end through which the feature server communicates with the networks. In preferred embodiments, a user of the present invention (the subscriber) can manage his or her service profile through the front end. For example, the subscriber may access the front end, via a global computer network or a PSTN, to define the subscriber rules for using the present invention.

**[0013]** The present invention can have a large number of applications. One embodiment of the present invention is suitable for wireless telephony. In this embodiment, the wireless device can be a wireless telephone. The feature server can activate one or more wireless telephone service features using the location information generated by the location system. In other words, when the wireless telephone is in a first location, a first service feature can be activated. Similarly, when the wireless telephone is in a second location, a different service feature may be used. For example, a wireless telephone service subscriber to the present invention may have all calls intended for his or her wireless telephone automatically routed to a wireline telephone when the subscriber enters the premises within which the wireline telephone is located.

**[0014]** In another embodiment, the present invention can enable a subscriber to track the location of a package during delivery. In this embodiment, the wireless device can be an

electronic transmitter that is attached to the package. As the package is being delivered, the location system generates location information pinpointing the location of the package. Based on the location information, the feature server can execute one or more tasks, including informing the subscriber of the status of the delivery and providing the recipient of the package an estimated time of arrival.

**[0015]** In still another embodiment of the present invention, the wireless device is a handheld computer. Using the location information pinpointing the location of the handheld computer, the subscriber, through the feature server, can communicate with a computer system, such as a LAN or the Internet, to operate a machine. The machine may be, for example, an electrical fan at the subscriber's home or a fax machine in the subscriber's office.

**[0016]** Accordingly, it is an object of the present invention to provide new uses of location information that indicates the location of the wireless device.

**[0017]** It is another object of the present invention to provide wireless telephone users additional flexibility to manage their telephone calls.

**[0018]** It is another object of the present invention to keep the sender and the receiver of a package well informed of the status of the delivery.

**[0019]** It is another object of the present invention to use location information to remotely operate a machine such as office equipment or a home appliance.

**[0020]** These and other objects of the present invention are described in greater detail in the detailed description of the invention, the appended drawings, and the attached claims.

## BRIEF DESCRIPTION OF THE DRAWINGS

**[0021]** FIG. 1 is a schematic diagram showing the system architecture of an embodiment of the present invention, and illustrating a wireless device in motion, moving from an origin to a destination.

**[0022]** FIG. 2 is a schematic diagram showing an alternative embodiment of the system architecture of the present invention.

**[0023]** FIG. 3 is a flowchart illustrating general steps involved in using an embodiment of the present invention.

**[0024]** FIG. 4 is a schematic diagram illustrating a specific example of a subscriber using a first specific embodiment of the present invention within a wireless communication network.

**[0025]** FIG. 5 is a flowchart illustrating the steps involved in using the first specific embodiment shown in FIG. 4.

**[0026]** FIG. 6 is a schematic diagram illustrating a specific example of a subscriber using a second specific embodiment of the present invention in areas served by more than one wireless communication network.

**[0027]** FIG. 7 is a flowchart illustrating the steps involved in using the second specific embodiment shown in FIG. 6.

**[0028]** FIG. 8 is a schematic diagram illustrating a specific example of using a third specific embodiment of the present invention to track the delivery of a package.

**[0029]** FIG. 9 is a flowchart illustrating the steps involved in using the third specific embodiment shown in FIG. 8.

**[0030]** FIG. 10 is a schematic diagram illustrating a specific example of using a fourth specific embodiment of the present invention to remotely operate various office equipment and home appliances controlled by one or more computer networks.

[0031] FIG. 11 is a flowchart illustrating the steps involved in using the fourth specific embodiment shown in FIG. 10.

#### DETAILED DESCRIPTION OF THE INVENTION

[0032] FIG. 1 is a schematic diagram showing the system architecture of an embodiment of the present invention, and illustrating wireless device 110 moving from origin 105 to destination 115. Wireless device 110 may be any wireless apparatus. For example, wireless device 110 may be a wireless telephone, a handheld computer, an interactive pager, or a personal digital assistant. Wireless device 110 may also be incorporated as a component of among other things, a wrist watch, an attache case, or an automobile. Preferably, wireless device 110 is a WAP-compatible thin client having a thin browser adapted to communicate with wireless communication network 100 and global computer network 140.

[0033] To track where wireless device 110 is located, the system architecture can include one or both of network-based location system 106 and handheld location system 112. Network-based location system 106 may be a component of a wireless communication network 100. Handheld location system 112 can be incorporated as part of wireless device 110. One or both of network-based location system 106 and handheld location system 112 can generate location information pinpointing the location of wireless device 110. In preferred embodiments, both location systems are compatible with the Geographic Information System (GIS) and the Global Positioning System (GPS). Handheld location system 112 is preferably a GPS receiver that is in wireless communication with a constellation of GPS satellites. In preferred embodiments, both location systems can be used to provide redundancy, accuracy, and reliability. The location information comprises point coordinates of wireless device 110. The point coordinates comprise an X component and a Y component of a coordinate system. In an exemplary embodiment of the present invention, the location information comprises a longitude and a latitude. For increased accuracy and granularity, the location information can further comprise an altitude. In preferred embodiments, the location information can pinpoint the location of wireless device 110 to within 125 meters, as required by the E911 mandate. Both location systems are preferably WAP compatible components.

[0034] In preferred embodiments, feature server 102 is GIS, GPS, and WAP compatible. Feature server 102 can receive the location information from location systems 106 and 112. Feature server 102 can also receive identity information of wireless device 110. The identity information may comprise, for example, a serial number of wireless device 110. The identity information may also be a mobile identification number of a wireless telephone. Like the location systems, feature server 102 may be a component separate from wireless device 110, as shown in FIG. 1. In other embodiments, feature server 102 may be a portable unit that is part of wireless device 110 as shown in FIG. 2. In still other embodiments, only one of feature server 102 and location system 112 is provisioned at wireless device 110.

[0035] Using the location information and the identity information of wireless device 110, feature server 102 can be adapted to execute a large number of actions according to subscriber rules, instructions, or preferences provided by a subscriber. For example, in an embodiment involving wireless telephony in which wireless device 110 is a wireless telephone, feature server 102 could use the location information and the identity information to activate one or more

service features subscribed to by the subscriber who uses the wireless telephone. Any service features available in wireless communications may be activated or deactivated by the present invention. These service features can include call forwarding, call placing or initiating, and voicemail greeting recording. In an embodiment involving a global computer network, feature server 102 could use the information to, for example, send an e-mail or operate a machine over the global computer network.

[0036] The subscriber rules, instructions, or preferences may be specified by the subscriber or created by feature server 102 based on the subscriber's habits for using wireless device 110. The subscriber rules may be provided to feature server 102 via a number of channels. For example, the subscriber rules may be keyed in by the subscriber or other persons using a keypad on wireless device 110. Alternatively, the subscriber rules may be provided via wireless communications network 100, global computer network 140, and PSTN 150.

[0037] As discussed above, in preferred embodiments of the present invention, location systems 106 and 112, and feature server 102 are WAP compatible. WAP is an application environment and set of communication protocols for wireless devices designed to enable manufacturer-, vendor-, and technology-independent access to global computer network 140 and advanced wireless telephony services provided by wireless communication network 100. An example of global computer network 140 is the Internet. WAP provides wireless Internet access through digital cellular networks, giving network users a menu driven method for downloading information, such as flight schedules and bank account balances, to wireless devices from the Internet. WAP is described in WAP version 1.1, which is herein incorporated by reference in its entirety.

[0038] Although shown as a separate component in FIGS. 1 and 2, memory 104 could be an integrated component of feature server 102. Memory 104 can store, for example, the location information, the identity information, and the subscriber rules. In addition, memory 104 may be populated with, among other things, a database that contains point coordinates of locations or areas likely to be encountered or visited by wireless device 110. In addition, memory 104 may contain a database relating or associating popular places with their location information including longitudes and latitudes. Preferably, information contained in memory 104 is in the GIS or GPS format, or in both formats.

[0039] Origin 105 shown in FIG. 1 is an area delineated by nodes 161, 162, 163 and 164. Destination 115 is defined by nodes 165, 166, 167, and 168. Each of nodes 161 through 168 can be characterized by point coordinates. The point coordinates comprise an X component and a Y component of the same coordinate system that defines the location information. Preferably, the point coordinates comprise a longitude and a latitude. Wireline telephones 107 and 117 are located at origin 105 and destination 115, respectively.

[0040] In preferred embodiments, the present invention further comprises front end 130, which is an intermediary component that connects feature server 102 to wireless communications network 100, global computer network 140, and public PSTN 150. As indicated in FIGS. 1 and 2, wireless communications network 100, global computer network 140, and PSTN 150 are accessible by various machines, including computer 141, wireless telephone 142, and wireline telephone 151.

[0041] Front end 130 comprises a profile management system. Through front end 130, a subscriber of the present invention may supply, modify, or otherwise manipulate service features controlled by feature server 102. For example, the subscriber may change the subscriber rules using front end 130. The subscriber may access front end 130 using computer 141, wireless telephone 142, or wireline telephone 151, in addition to wireless device 110 itself.

[0042] Interactions among the various components described above have a large number of applications in wireless communications and consumer electronics. For the purposes of demonstration, some specific embodiments or examples of how the present invention may be implemented are discussed below. Although the examples best illustrate the present invention, one of ordinary skill in the art would appreciate that other embodiments are possible in light of the disclosure. In addition, while the system operation described herein and illustrated in the diagrams and flowcharts contains many specific details, these specific details should not be construed as limitations on the scope of the invention, but rather as examples of preferred embodiments thereof. As would be apparent to one of ordinary skill in the art, many other variations on the system operation are possible, including differently grouped and ordered method steps. Accordingly, the scope of the invention should be determined not by the embodiments illustrated, but by the appended claims and their equivalents.

[0043] FIG. 3 is a flowchart illustrating general steps involved in using an embodiment of the present invention. For clarity, references are made to components shown in FIGS. 1 and 2. In specific embodiments of the present invention, one or more of these general steps may be used. Furthermore, each of the general steps may include one or more sub-steps. Although these general steps and sub-steps are discussed herein sequentially, the steps may be implemented in any combination and in any logical order to accomplish a specific purpose. Furthermore, specific embodiments of the present invention may include additional steps not discussed herein.

[0044] In step 202, a subscriber to the service of the present invention, e.g., the user of wireless device 110 can define a set of subscriber rules, instructions, or preferences. The subscriber rules relate or associate location information with the execution of an action. Referring to FIGS. 1 and 2, assuming wireless device 110 is a wireless telephone, specific examples of the subscriber rules may include:

[0045] (1) When the wireless telephone is in origin 105, i.e., within the boundaries delineated by nodes 161, 162, 163 and 164, feature server 102 routes all calls intended for the wireless telephone to wireline telephone 107.

[0046] (2) When the wireless telephone is in destination 115, i.e., within the boundaries delineated by nodes 165, 166, 167, and 168, feature server 102 routes all calls intended for the wireless telephone to wireline telephone 117.

[0047] (3) When the wireless telephone is in neither origin 105 nor destination 115, use a default rule, e.g., feature server 102 allows the wireless telephone to accept calls.

[0048] In step 204, the subscriber rules can be stored in memory 104. The subscriber rules may be stored using a number of channels, including via an input device on wireless device 110, other components of wireless communications network 100, global computer network 140, and PSTN 150 that are shown in FIGS. 1 and 2. The subscriber rules may be stored in memory 104 using any known format. In preferred embodiments, the subscriber rules can be contained in a data-

base that relates a specific location with a specific action to be executed when wireless device 110 is in the specific location.

[0049] Feature server 102 can operate under a default rule in step 206, e.g., allowing wireless device 110 to accept all calls, unless wireless device 110 is at origin 105 or destination 115. In step 208, feature server 102 can monitor location information to determine whether wireless device 110 has changed locations. As mentioned above, the location information may be generated by either handheld location system 112 or network-based location system 106, or by a combination of both location systems. The location systems can generate the location information as specified in the subscriber rules. For example, the location information may be generated at regular intervals. Furthermore, the location systems may generate the location information at designated or scheduled times specified by the subscriber rules.

[0050] In preferred embodiments, handheld location system 112 is a GPS receiver that can generate the location information using information received from a constellation of GPS satellites. Network-based location system 106 can generate the location system using triangulation across cell sites based on signal strength experienced by wireless device 110. In other embodiments, the location information may be generated using designation of cell sites. For example, if origin 105 and destination 115 are within wireless coverage of two distinct and separate cell sites of a wireless communications network in which wireless device 110 operates, the location information pinpointing the location of wireless device 110 may be determined based on which cell site is exchanging wireless signals with wireless device 110.

[0051] For discussion purposes, it is assumed that wireless device 110 is initially located in origin 105, i.e., within the area delineated by nodes 161, 162, 163, and 164. The location system can generate initial location information and provide feature server 102 with the initial location information. Feature server 102 can store the initial location information in memory 104, and route all calls intended for wireless device 110 to wireline telephone 107. Assuming further that wireless device 110 is then moved from origin 105 to destination 115, crossing a first boundary defined by nodes 162 and 163 and a second boundary defined by nodes 165 and 168. One or both location systems 106 and 112 can generate a first subsequent location information after wireless device 110 crosses the first boundary. The first subsequent location information can then be provided to feature server 102. In step 210, feature server 102 can detect a change of location because the first subsequent location information is different from the initial location information.

[0052] In step 212, a determination can be made on whether the change of location is material. The materiality depends on whether wireless device 110 has been moved to a different location in which a different action should be executed by feature server 102. In the example, a change is considered not material unless wireless device 110 crosses the first or the second boundaries. Here, since the first subsequent location information indicates that wireless device 110 has crossed the first boundary, the change is considered material.

[0053] In step 214, the subscriber can be notified that a material or actionable change of location has been detected, and the subscriber can be given an opportunity to override the subscriber rules. In preferred embodiments, a notification provided to the subscriber may be executed using any known method. For example, a vibration on, or a ringing tone from, wireless device 110 could be used to alert the subscriber that,

unless the subscriber otherwise overrides, a new service feature will be activated. The subscriber may then see or hear a message, e.g., “You have left origin 105, unless you press the Cancel key, all incoming calls will be accepted.”

**[0054]** If in step 216 the subscriber chooses to override, she can press a key that is responsive to the notification, e.g., the “Cancel” key, on wireless device 110. The process then goes to step 218, in which the existing service feature will continue to operate, i.e., feature server 102 will continue to forward all calls intended for wireless device 110 to wireline telephone 107. Otherwise, the process goes to step 220, and a new service feature is activated according to the subscriber rules, i.e., stop forwarding calls to wireline telephone 107, and begin accepting calls using wireless device 110.

**[0055]** If in step 208 a second subsequent location information is generated before wireless device 110 crosses the second boundary, then in step 210, when feature server 102 compares the second subsequent location information with the first subsequent location information, feature server 102 detects a change of location. In step 212, this new change of location is considered not material because wireless device 110 did not cross either the first or the second boundaries. In this case, the process returns to step 208.

**[0056]** If in step 208 a third subsequent location information is generated after wireless device 110 crossed the second boundary defined by nodes 165 and 168, a comparison of the second and the third subsequent location information by feature server 102 in step 210 then indicates that another change of location has been detected. In step 212, feature server 102 may determine that the change is material. In step 214, a notification, e.g., “You have entered destination 115, unless you press the Cancel key, all incoming calls will be forwarded to wireline telephone 117.” The subscriber may then decide in step 216 whether to override the subscriber rules.

**[0057]** Instead of defining the subscriber rules ahead of time in step 202 for feature server 102 to follow, feature server 102 may be programmed to define the subscriber rules based on the subscriber’s habits for using wireless device 110. For example, if all location information generated by the location system and all actions executed by the subscriber are stored in memory 104 by feature server 102, after a definite period of time, sufficient data would be collected to establish what the subscriber’s habits were for using wireless telephone 110. The subscriber may then decide whether to adopt the habits as the subscriber rules.

**[0058]** There are numerous applications and embodiments for the present invention. Set forth below are four specific examples of how the present invention may be used. Although these examples best illustrate the present invention, one of ordinary skill in the art would appreciate that these specific examples contain many specific details, and these specific details should not be construed as limitations on the scope of the invention. Accordingly, the scope of the invention should be determined not by the embodiments and the examples illustrated, but by the appended claims and their equivalents.

**[0059]** FIG. 4 is a schematic diagram illustrating a specific example of the use of a first specific embodiment of the present invention by a subscriber who travels within a wireless communication network operated by a wireless service provider. Home 302, automobile 304, building 306, courthouse 308, and theater 310 are places that the subscriber spends some of his time most days, and each of these places are located within wireless coverage of the wireless service provider.

**[0060]** In this example, the subscriber has wireless device 110. The subscriber has a subscription to the service of the present invention. The subscriber also has a home wireline telephone and an office wireline telephone located at home 302 and the seventh floor of building 306, respectively. Although the subscriber does not want to miss any incoming calls to his wireless device 110, he does not want to receive all calls on his wireless device 110 all the time either. The subscriber wishes to use his wireless device 110 to receive calls only when he is not in one of four places: home 302, the seventh floor of building 306, courthouse 308, and theater 310. When at home 302, he wants all calls to be forwarded to his home wireline telephone. When on the seventh floor of building 306, he wants all calls to be forwarded to the office wireline telephone. When in courthouse 308, he wants to have his wireless device 110 temporarily disabled, and all calls are forwarded to his voice mailbox. When in theater 310, the subscriber wants to have an option to decide whether to receive an incoming call. In all other places, he is available to use his wireless device 110 to answer calls, receive voice mail messages, and using his wireless device 110 to access information on a global computer network.

**[0061]** Referring to both FIGS. 1 and 4, the subscriber’s wireless device 110 may be a wireless telephone without handheld location system 112. Wireless device 110, network-based location system 106, feature server 102, and memory 104 are all part of the wireless communication network operated by the wireless service provider of which the subscriber is a customer. In a different example, the system architecture shown in FIG. 2 may be used.

**[0062]** FIG. 5 is a flowchart illustrating the steps involved in using the first specific embodiment shown in FIG. 4. In step 322, each of home 302, the seventh floor of office 306, courthouse 308, and theater 310 is delineated. Delineation may be performed using a number of methods. One delineation method comprises the use of at least three corner nodes. Another delineation method may comprise the use of one center node and a radius. Each node can comprise point coordinates. Preferably, the point coordinates comprise an X component and a Y component of a coordinate system. For increased capability, the point coordinates can further comprise a Z component of the coordinate system. One coordinate system that is suitable for the present invention has longitude, latitude, and altitude as its X, Y, and Z components, respectively.

**[0063]** For example, home 302 could be delineated as a circular area with a 125-meter radius with a center node. Wireless device 110 can be considered to be within home 302 as long as location information generated by location system 106 indicates that wireless device 110 is within the 125-meter circle, regardless of the altitude. The seventh floor of building 306 could be defined as a block having eight nodes, each of which has X, Y, and Z components. Courthouse 308 and theater 310 may be similarly defined using the same or other geometrical shapes including an ellipse or a polygon with at least three nodes for two dimensional delineations.

**[0064]** In step 324, specific call routing instructions can be defined and stored in memory 104 shown in FIG. 1 or 2. Storage of the call routing instructions in memory 104 may be performed via different channels including wireless communications network 100, global computer network 140, and PSTN 150. Table 1 below contains call routing instructions for the subscriber.

TABLE 1

Call Routing Instructions	
Location of wireless device 110	Instructions
Home 302	Forward calls to home wireline telephone
Seventh Floor Building 306	Forward calls to office wireline telephone
Courthouse 308	Forward calls to voice mailbox
Theater 310	Turn off ringer, turn on vibrator, and provide call management options
All other places	Enable ringer and accept all incoming calls (the default rule)

[0065] The call routing instructions in Table 2 may be paraphrased as follows:

[0066] (1) When wireless device 110 is within 125 meters of the center node of home 302, all incoming calls are forwarded to the subscriber's home wireline telephone.

[0067] (2) When wireless device 110 is on the seventh floor of building 306, all incoming calls are forwarded to the subscriber's office wireline telephone.

[0068] (3) When wireless device 110 is in courthouse 308, all incoming calls are forwarded to the subscriber's voice mailbox.

[0069] (4) When wireless device 110 is in theater 310, the ringer feature of wireless device 110 is disabled and the vibration feature is enabled. In addition, a menu of call management options is presented to the subscriber on the display of wireless device 110.

[0070] (5) When wireless device 110 is not in any of the above four places, all incoming calls are alerted to the subscriber using the ringer feature (the default rule).

[0071] For convenience, both location delineations and call routing instructions can be collectively referred to herein as subscriber rules. The subscriber rules could be initially set up, or subsequently modified, by the subscriber via a representative of the wireless service provider, or through a "self-help" feature using, among other things, wireless device 110 itself, wireline telephone 151 through PSTN 150, computer 141 through global computer network 140, or wireless telephone 142 through wireless communications network 100. Wireless communications network 100 may be the same or a different network of which wireless device 110 is a part.

[0072] In step 326, a location system, such as network-based location system 106 shown in FIG. 1, can generate location information pinpointing the location of wireless device 110, and the location information is provided to a feature server, such as feature server 102 shown in FIG. 1. As discussed above, the location information most preferably comprises point coordinates having the X and Y, and possibly, Z, components of the coordinate system. The location information may be generated using a number of different methods. One method is by triangulation of signal strengths experienced by wireless device 110 when in communication with a plurality of antennas. The location information may be generated at regular intervals, e.g., every five minutes. In preferred embodiments, the location information can be generated according to a schedule prepared by the subscriber as part of the subscriber rules. For example, the subscriber may specify that the location information be generated every five minutes between 8 a.m. and 8 p.m. on Monday to Friday; and at all other times, every hour on the hour.

[0073] In step 328, feature server 102 can be adapted to review the location information and determines whether the location information fits within the parameters of the subscriber rules. If the determination is in the affirmative, the process goes to step 330. Otherwise, the process returns to step 326.

[0074] Referring to FIG. 4 and assuming the subscriber brings wireless device 110 to various locations in the following order: home 302, building 306, courthouse 308, and theater 310. When in transit from home 302 to building 306, the subscriber uses automobile 304. In step 328, when the location information indicates that wireless device 110 is at home 302, an incoming call intended for wireless device 110 is forwarded to the home wireline telephone in step 330. As soon as the subscriber leaves home 302, i.e., he is more than 125 meters away from the center node of home 302, feature server 102, in step 330, stops forwarding all calls intended for wireless device 110 to the home wireline telephone. Also in step 330, feature server 102 can operate under the default rule, i.e., it can allow wireless device 110 to accept all calls. Therefore, while the subscriber is in automobile 304 from home 302 to building 306, he receives calls intended for wireless device 110 using wireless device 110 itself.

[0075] Wireless device 110 can continue to receive calls even as the subscriber enters the parameter of building 306, i.e., the X and Y components of the location information are within the delineated boundaries of building 306. The call forwarding feature to his office wireline telephone is not activated until he reaches the seventh floor, i.e., when the Z component of the location information matches the value specified in the subscriber rules. If the subscriber goes to a different floor of building 306, e.g., the sixth floor or the tenth floor, wireless device 110 can return to use the default rule, i.e., it can receive all calls.

[0076] When the location information indicates that the subscriber has entered courthouse 308, feature server 102 immediately activates the voicemail feature of the subscriber rules. Once the feature is activated, all incoming calls are automatically forwarded to the subscriber's voice mailbox. In other words, wireless device 110 does not ring as long as it remains within the delineated boundaries of courthouse 308. If a voicemail was left in the voice mailbox while the subscriber was in courthouse 308, then as soon as he leaves courthouse 308, he is alerted to the voicemail message by feature server 102 through a ringing tone (or a vibration signal) from wireless device 110.

[0077] When the subscriber enters the delineated boundaries of theater 308, another service feature is activated. This time, the subscriber is alerted to an incoming call by the vibrator feature of wireless device 110 instead of the ringer feature. Through a display on wireless device 110, the subscriber is given a list of call management options outlining what he could do with the incoming call. For example, the subscriber is asked to select one option from the choices of "Answer," "Hold," "Reject," "Voice Mail," and "Forward to Office." If the subscriber decides to accept the call but at a few seconds later, he can simply choose "Hold," and the caller will hear a recorded voice of the subscriber, e.g., "I'm in the theater, please wait for a few more seconds as I find my way to a place where I can talk." The subscriber then excuses himself, finds a convenient place to talk, and presses another key on wireless device 110 so that he could start talking with the caller. Alternatively, if the subscriber does not want to take the call, he could choose one of the remaining options. As

soon as the subscriber leaves theater **310**, the default rule is in operation again unless the subscriber is in a location that is defined by the subscriber rules.

**[0078]** FIG. 6 is a schematic diagram illustrating a specific example of using a second specific embodiment of the present invention by a subscriber whose traveling covers areas served by more than one wireless communication network. In this example, the subscriber lives and works in home city **402** where she is a customer of a wireless service provider. She travels occasionally to foreign city **406** for vacation. She visits domestic city **410** regularly to conduct business. The wireless service provider has roaming agreements with other wireless service providers in domestic city **410** and foreign city **406**. As a result, the subscriber may use her wireless device **110** in home city **402**, domestic city **410**, and foreign city **406**. Airplanes **404** and **408** and train **412** are vehicles that transport the subscriber from a city to another city. In this embodiment, the subscriber rules are established based on the subscriber's habits for using wireless device **110**. In this example, wireless device **110** may be a wireless telephone. The location system can be a handheld unit such as handheld location system **112** shown in FIG. 2. Furthermore, feature server **102** and memory **104** can be part of wireless device **110** as shown in FIG. 2. Again, the system architecture shown in FIG. 1 may also be used.

**[0079]** FIG. 7 is a flowchart illustrating the steps involved in using the second specific embodiment shown in FIG. 6. In step **422**, the location system can generate location information pinpointing the location of wireless device **110** whenever wireless device **110** is used. The location information and the habits of the subscriber for using wireless device **110** can be stored, for example, in memory **104** that is in communication with feature server **102**. For example, feature server **102** can record in memory **104** frequently dialed telephone numbers and relates those frequently dialed numbers with the location information and the time at which the calls were made.

**[0080]** In step **424**, after feature server **102** has built up substantial experience with the subscriber's movements and habits, e.g., two months, the subscriber's habits for using wireless device **110** can be reduced to a finite number of repeated circumstances. In step **426**, feature server **102** can convert the habits into subscriber rules. In a specific example, the subscriber rules may contain the following call routing instructions and user preferences:

**[0081]** (1) When wireless device **110** is in home city **402**, accept all incoming calls.

**[0082]** (2) When wireless device **110** is in foreign city **406** where wireless device **110** was never used in the last two months, an incoming call is forwarded to his voice mailbox and an announcement: "I'm out of town, please leave a message," is played as a greeting.

**[0083]** (3) When wireless device **110** is in domestic city **410** where he uses wireless device **110** to accept calls from a selected list of callers, only incoming calls from those callers are acceptable. All other incoming calls are forwarded to his voice mailbox.

**[0084]** (4) When wireless device **110** is in an airport, notify the subscriber that he is in the airport, and wireless device **110** will be turned off in thirty minutes unless he overrides it or specify a time at which to turn off wireless device **110**.

**[0085]** (5) When wireless device **110** is approaching home city **402** on train **412** and train **412** is about 20 minutes away from a train station in home city **402**, call a driver to pick up the subscriber.

**[0086]** In step **428**, the subscriber rules can be presented to the subscriber for her approval. The subscriber rules may be displayed on the mini-browser on wireless device **110** or they may be played as voice recording. If the subscriber does not approve the subscriber rules, the process return to step **422**. If the subscriber rules are modified or otherwise approved by the subscriber, the process goes to step **430**.

**[0087]** Referring to FIG. 6 and assuming the subscriber is going through the following journey: arriving at a first airport in home city **402**; flying on airplane **404**; arriving at a second airport; staying in foreign city **406**, leaving the second airport; flying on airplane **408**; arriving at a third airport; staying in domestic city **410**; riding on train **412**; and arriving at a train station in home city **402**. Steps **430** through **434** of FIG. 7 may be described as follows.

**[0088]** In step **430**, location system **112** can generate the location information at regular intervals, e.g., every five minutes. When the subscriber and wireless device **110** arrives at the first airport in home city **402** and generate the location information there, feature server **102** can recognize the location information as a triggering event, i.e., wireless device **110** is in an airport that is identified in the subscriber rules. In step **432**, feature server **102** can review the subscriber rules, and determine that the appropriate action is to alert the subscriber that she is in the airport. In step **434**, feature server **102** can ring wireless device **110**, and display the message: "You are now at the airport. This telephone will be powered off in thirty minutes unless you enter a number greater than 30." Suppose the departure time is 60 minutes away from the time the message is displayed, and the subscriber wants to wait for an incoming call, the subscriber may use the keypad to enter "60," delaying the auto power off feature from 30 minutes to 60 minutes. When the 60 minutes duration expires, feature server **102** can power off wireless device **110**. This feature prevents the subscriber from forgetting to power off her wireless device **110** when she enters airplane **404**.

**[0089]** Steps **430** through **434** are then repeated as the subscriber continues her journey. When the subscriber powers on wireless device **110** in foreign city **406**, location system **112** can generate new location information in step **430**. When feature server **102** receives the new location information, it knows, based on the subscriber rules, that wireless device **110** is in a city where the subscriber does not accept incoming calls. Therefore, although the subscriber may use wireless device **110** to make outgoing calls, all incoming calls will be forwarded to her voice mailbox, thereby saving her roaming fees for answering the incoming calls. If a call is made by a caller to wireless device **110**, feature server **102**, in step **434**, can play the announcement to the caller "I'm out of town, please leave a message."

**[0090]** As the subscriber continues her journey from foreign city **406** to domestic city **410** using airplane **408**, similar steps are repeated. For example, the subscriber is reminded about the auto power off feature when she is in the second and third airports.

**[0091]** When the subscriber arrives in domestic city **410** that she visits frequently, feature server **102**, in step **432**, can review location information generated by location system **112** in step **430**, and accepts incoming calls from designated callers in accordance with the subscriber rules in step **434**.

**[0092]** When the subscriber is on train **412**, location system **112** can continue to generate location information, and feature server **102** can continue to review the location information. As soon as the train is estimated to arrive at the train



station in home city 402, feature server 102 can make a call to a taxi service. This feature is done even if the subscriber is sleeping. The taxi service would hear a voice recording, "This is Ms. Smith. I am 20 minutes away from the train station. Please come to pick me up."

[0093] FIG. 8 is a schematic diagram illustrating a specific example of using a third specific embodiment of the present invention to track the delivery of a piano from factory 502 to church 512 in city 510. Along the delivery route, the piano will be shipped using vessel 504, stored in warehouse 506, and delivered by truck 508. In this embodiment, a handheld location system, such as location systems 112 shown in FIG. 2 can be provisioned on wireless device 110. Wireless device 110 in this embodiment may be an electronic transmitter. The preferred location system 112 in this embodiment is a GPS receiver. Wireless device 110 can be easily attached to the piano. Location system 112 is in communication with a feature server, such as feature server 102 shown in either FIG. 1 or FIG. 2. Feature server 102 may be part of wireless device 110 or it may be residing at a local area network of the subscriber. In this example, the subscriber is the delivery company. As part of its delivery services, the subscriber provides its customer with a service of the present invention through which the piano manufacturer and the piano purchaser may specify before the delivery begins how they would like to be informed of the delivery status.

[0094] FIG. 9 is a flowchart illustrating the steps involved in using the third specific embodiment shown in FIG. 8. In step 522, delivery notification preferences (the subscriber rules) can be defined. The subscriber rules may contain inputs from the delivery company, the piano manufacturer, and the piano purchaser. The subscriber rules can be stored in a memory, such as memory 104 shown in FIGS. 1 and 2. Specific examples of the subscriber rules may include the

[0095] (1) When wireless device 110 is attached to the piano that is ready for delivery in factory 502, notify the piano purchaser that the piano has been packaged and is ready for delivery.

[0096] (2) While vessel 504 is carrying the piano, monitor the speed of the vessel, and periodically inform the subscriber of its status with an estimated time of arrival.

[0097] (3) When the piano is stored in warehouse 506, dispatch truck 508 to pick up the piano.

[0098] (4) While truck 508 is carrying the piano, periodically calculate the estimated time of arrival by monitoring the speed at which the truck is moving and the distance traveled.

[0099] (5) When truck 508 enters the city limits of city 510 where church 512 is located, notify the piano purchaser about the pending arrival.

[0100] (6) When the piano is delivered to the piano purchaser and wireless device 110 is detached, print a log documenting the delivery for the piano manufacturer and the delivery company.

[0101] Once these delivery preferences or subscriber rules are defined, they can be programmed into feature server 102 and memory 104. In step 524, wireless device 110 can be attached to the piano and activated.

[0102] Once activated, location system 112 can generate location information in step 526. The location information may be generated continuously or at regular intervals, and the location information can be provided to feature server 102. In other embodiments, the location information may be generated at specific times as programmed in the subscriber rules. In step 528, feature server 102 can review the location infor-

mation. If in step 530 feature server 102 receives location information that is defined in the subscriber rule, e.g., the piano is now somewhere in the Pacific Ocean on vessel 504, feature server 102 can execute an action in step 532. In these instances, the appropriate action is to review the location information and the speed at which the vessel is traveling, and estimate an arrival time. The appropriate action may further include sending a message to the headquarters of the subscriber informing the subscriber of the status of the status of the delivery. Steps 528 through 532 are repeated as the piano makes its way to the piano purchaser.

[0103] For example, when the piano is stored in warehouse 506, feature server 102 can execute another action. This time it may notify the subscriber that the piano has arrived in warehouse 506, and the subscriber can dispatch a truck to pick up the piano. When the piano is being carried by truck 508, location system 112 can continue to generate location information and feature server 102 can continue to monitor the location of the piano and estimate the time of arrival. As soon as truck 508 enters the city limits of city 510, feature server 102 can send a message to the piano purchaser. The message may be a voice recording stating: "The piano you ordered has entered the city limits. It should be arriving at the church momentarily." Once the piano purchaser accepts the piano, wireless device 110 can be removed. A log of the delivery can then be printed at the headquarters. The log may then be given to the piano manufacturer for its files.

[0104] FIG. 10 is a schematic diagram illustrating a specific example of using a fourth specific embodiment of the present invention by a fourth subscriber to activate a machine such as an office equipment and a home appliance controlled by one or more computer networks. In this embodiment, wireless device 110 of the present invention may be handheld computer 610. Appliance 607 and equipment 617 are located in home 605 and office 615, respectively. Feature server 102 is in communication with handheld computer 610 and front end 130. Although shown as separate components, feature server 102, memory 104, and location system 106 may be integrated into handheld computer 610. Front end 130 is in communication with one or more computer networks 640 and at least one telephone network 650. Home 605 is delineated by nodes 615, 616, 617, and 618. Office 615 is delineated by nodes 611, 612, 613, and 614. Communication link 641 connects appliance 607 to computer network 640, and communication link 642 connects equipment 617 to computer network 640. Computer network 640 may be a local area network. Computer network 640 may also be the global computer network known as the Internet. Feature server 102, memory 104, and location systems 106 and 112 communicate with handheld computer 610 via communication link 108. Each of feature server 102, memory 104, and location system 106 is preferably provisioned at handheld computer 610.

[0105] FIG. 11 is a flowchart illustrating the steps involved in using the fourth specific embodiment shown in FIG. 10. In this embodiment, the subscriber can define subscriber rules through an input device on handheld computer 610 in step 622. The subscriber rules may include a provision that activates the location system in step 624 to generate location information pinpointing the location of handheld computer 610 at specific times. For example, feature server 102 can be programmed with subscriber rules such that location system 106 can generate location information at 8:55 a.m. and 5:55 p.m. on Mondays through Fridays. Location system 106 can



be otherwise inactive. The subscriber rules in this specific example may include the following:

**[0106]** (1) Generate location information at 8:55 a.m. on Mondays through Fridays. If handheld computer **610** is more than ten minutes away from office **615**, call someone in office **615** to inform him that the subscriber is more than ten minutes away from office **615**. Otherwise, turn on equipment **617** via computer network **640**.

**[0107]** (2) Generate location information at 5:55 p.m. on Mondays through Fridays. If handheld computer **610** is more than 30 minutes from home **605**, call someone at home **605**. Otherwise, turn on appliance **607** via computer network **640**.

**[0108]** At 8:55 a.m. on a Monday, location system **106** can generate the first location information in step **624**. In step **626**, feature server **102** can review the location information. If in step **628** it is determined that handheld computer **610** is still more than ten minutes away from office **615**, feature server **102**, in step **630**, can make a call to a wireline telephone in office **615** through telephone network **650** to let someone know that the subscriber is more than ten minutes away from office **615**. Otherwise, if in step **628** it was determined that the subscriber is fewer than ten minutes away from office **615**, then feature server **102** in step **632** sends a message to computer network **640** to turn on equipment **617**.

**[0109]** Similarly, at 5:55 p.m., location system **106** can generate a second location information in step **624**. In step **626**, feature server **102** can review the location information. If in step **628** it is determined that the subscriber is not within 30 minutes from home **605**, feature server **102** can make a call, in step **630**, through telephone network **650** to a wireline telephone at home **605** that the subscriber is more than 30 minutes away from home **605**. Otherwise, feature server **102** can activate appliance **607** in step **632** via computer network **640**.

**[0110]** The foregoing disclosure of embodiments and specific examples of the present invention have been presented for purposes of illustration and description. It is not intended to be exhaustive or to limit the invention to the precise forms disclosed. Many variations and modifications of the embodiments described herein will be obvious to one of ordinary skill in the art in light of the above disclosure. The scope of the invention is to be defined only by the claims appended hereto, and by their equivalents.

1. A method, for affecting a remote machine of a user of a wireless communication service based on location information associated with a wireless communication device of the user, comprising:

determining, by a processor, using the location information, that a location rule has been satisfied, the location information relating to a location of the wireless communication device, the wireless communication device being remote from the remote machine of the user; and transmitting, by the processor, a signal to change operation of the remote machine of the user of the wireless communication service responsive to determining that the location rule has been satisfied.

2. The method of claim 1, wherein the location rule is pre-established by the user of the wireless communication service.

3. The method of claim 1, wherein transmitting, by the processor, the signal to change operation of the remote machine of the user of the wireless communication service comprises transmitting, by the processor, the signal to equipment selected from a group of equipment consisting of:

equipment in an office of the user of the wireless communication service; and

equipment in a home of the user of the wireless communication service.

4. The method of claim 1, wherein transmitting, by the processor, the signal to change operation of the remote machine of the user of the wireless communication service comprises transmitting, by the processor, the signal, according to a preference pre-established by the user, by way of at least one channel selected from a group of channels consisting of:

a cellular communication network; and

a global computer network.

5. The method of claim 1, wherein transmitting, by the processor, the signal to change operation of the remote machine of the user of the wireless communication service comprises transmitting, by the processor, the signal to a computer network controlling the remote machine.

6. The method of claim 5, wherein transmitting, by the processor, the signal to the computer network comprises transmitting, by the processor, the signal to a local area network.

7. The method of claim 5, wherein transmitting, by the processor, the signal to the computer network comprises transmitting, by the processor, the signal to a global computer network.

8. The method of claim 1, wherein:

determining, by the processor, that the location rule has been satisfied comprises determining, by the processor being a part of the wireless communication device, that the location rule has been satisfied; and

transmitting, by the processor, the signal to change operation of the remote machine comprises transmitting, by the processor of the wireless communication device, the signal to change operation of the remote machine.

9. The method of claim 1, wherein:

determining, by the processor, that the location rule has been satisfied comprises determining, by the processor being a part of a feature server, that the location rule has been satisfied; and

transmitting, by the processor, the signal to change operation of the remote machine comprises transmitting, by the processor of the feature server, the signal to change operation of the remote machine.

10. The method of claim 1, wherein:

transmitting, by the processor, the signal to change operation of the remote machine of the user of the wireless communication service comprises transmitting, by the processor, the signal to equipment selected from a group of equipment consisting of:

equipment in an office of the user of the wireless communication service; and

equipment in a home of the user of the wireless communication service;

determining, by the processor, that the location rule has been satisfied comprises determining, by the processor being a part of a feature server remote to the wireless communication device and to the equipment selected from the group, that the location rule has been satisfied; and

transmitting, by the processor, the signal to change operation of the equipment selected from the group comprises

transmitting, by the processor of the feature server, the signal to change operation of the equipment selected from the group.

**11.** The method of claim 1, wherein:

the location information associated with the wireless communication device of the user comprises an altitude of the wireless communication device; and

determining, by the processor, that the location rule has been satisfied is performed by the processor using the location information comprising the altitude of the wireless communication device.

**12.** The method of claim 1, wherein:

the location rule relates to an estimated time of arrival of the wireless communication device at a destination; and determining, by the processor, that the location rule has been satisfied comprises determining, by the processor, that the location rule has been satisfied based in part on the estimated time of arrival of the wireless communication device at the destination.

**13.** The method of claim 12, wherein:

the location rule relates to the estimated time of arrival of the wireless communication device at the destination being selected from a group of destinations consisting of:

an office of the user; and

a home of the user; and

determining, by the processor, that the location rule has been satisfied comprises determining, by the processor, that the location rule has been satisfied based in part on the estimated time of arrival of the wireless communication device at the destination selected from the group.

**14.** The method of claim 1, further comprising at least one of a group of operations consisting of:

generating, by the processor, at a predetermined time, the location information associated with the wireless communication device of the user;

receiving, by the processor, the location information associated with the wireless communication device of the user; and

monitoring, by the processor, the location information associated with the wireless communication device of the user.

**15.** A system, for affecting a remote machine of a user of a wireless communication service based on location information associated with a wireless communication device of the user, comprising:

a processor; and

a non-transitory computer-readable medium comprising instructions that, when executed by the processor, cause the processor to perform operations comprising:

determining, using the location information, that a location rule has been satisfied, the location information relating to a location of the wireless communication device, the wireless communication device being remote from the remote machine of the user; and

transmitting a signal to change operation of the remote machine of the user of the wireless communication service responsive to determining that the location rule has been satisfied.

**16.** The system of claim 15, wherein the instructions that, when executed by the processor, cause the processor to determine that the location rule has been satisfied, cause the processor to determine that the location rule has been satisfied wherein the location rule is pre-established by the user of the wireless communication service.

**17.** The system of claim 15, wherein:

the instructions that, when executed by the processor, cause the processor to determine that the location rule has been satisfied, cause the processor to determine that the location rule has been satisfied wherein the location rule relates to an estimated time of arrival of the wireless communication device at a destination; and

the instructions that, when executed by the processor, cause the processor to determine that the location rule has been satisfied, cause the processor to determine that the location rule has been satisfied based in part on the estimated time of arrival of the wireless communication device at the destination.

**18.** A tangible computer-readable medium comprising computer-executable instructions that, when executed by a processor, cause the processor to perform operations comprising:

determining, using the location information, that a location rule has been satisfied, the location information relating to a location of the wireless communication device of a user of a wireless communication service, the wireless device being remote from a remote machine of the user; and

transmitting a signal to change operation of the remote machine of the user of the wireless communication service responsive to determining that the location rule has been satisfied.

**19.** The tangible computer-readable medium of claim 18, wherein the instructions that, when executed by the processor, cause the processor to determine that the location rule has been satisfied, cause the processor to determine that the location rule has been satisfied wherein the location rule is pre-established by the user of the wireless communication service.

**20.** The tangible computer-readable medium of claim 18, wherein:

the instructions that, when executed by the processor, cause the processor to determine that the location rule has been satisfied, cause the processor to determine that the location rule has been satisfied wherein the location rule relates to an estimated time of arrival of the wireless communication device at a destination; and

the instructions that, when executed by the processor, cause the processor to determine that the location rule has been satisfied, cause the processor to determine that the location rule has been satisfied based in part on the estimated time of arrival of the wireless communication device at the destination.

\* \* \* \* \*