



US008373567B2

(12) **United States Patent**
Denson

(10) **Patent No.:** **US 8,373,567 B2**
(45) **Date of Patent:** **Feb. 12, 2013**

(54) **SYSTEM AND METHOD FOR IDENTIFYING
NON-EVENT PROFILES**

(75) Inventor: **Craig Denson**, San Diego, CA (US)

(73) Assignee: **DriveCam, Inc.**, San Diego, CA (US)

(*) Notice: Subject to any disclaimer, the term of this
patent is extended or adjusted under 35
U.S.C. 154(b) by 1026 days.

(21) Appl. No.: **11/467,694**

(22) Filed: **Aug. 28, 2006**

(65) **Prior Publication Data**

US 2007/0257781 A1 Nov. 8, 2007

Related U.S. Application Data

(63) Continuation-in-part of application No. 11/382,222,
filed on May 8, 2006, now Pat. No. 7,659,827, and a
continuation-in-part of application No. 11/382,239,
filed on May 8, 2006, now abandoned, and a
continuation-in-part of application No. 11/382,325,
filed on May 9, 2006, and a continuation-in-part of
application No. 11/382,328, filed on May 9, 2006, now
abandoned.

(51) **Int. Cl.**
G08B 23/00 (2006.01)

(52) **U.S. Cl.** **340/576; 701/35**

(58) **Field of Classification Search** 340/439,
340/576, 441, 669; 701/29, 35; 434/62;
348/148

See application file for complete search history.

(56) **References Cited**

U.S. PATENT DOCUMENTS

2,943,141 A 6/1960 Knight
3,634,866 A 1/1972 Meyer
3,781,824 A 12/1973 Caiati et al.
3,812,287 A 5/1974 Lemelson
3,885,090 A 5/1975 Rosenbaum

3,992,656 A 11/1976 Joy
4,054,752 A 10/1977 Dennis, Jr. et al.
4,271,358 A 6/1981 Schwarz
4,280,151 A 7/1981 Tsunekawa et al.
4,281,354 A 7/1981 Conte
4,401,976 A 8/1983 Stadelmayr
4,409,670 A 10/1983 Herndon et al.
4,420,773 A 12/1983 Toyoda et al.
4,425,097 A 1/1984 Owens
4,456,931 A 6/1984 Toyoda et al.
4,489,351 A 12/1984 d'Alayer de Costemore d'Arc
4,496,995 A 1/1985 Colles et al.
4,500,868 A 2/1985 Tokitsu et al.

(Continued)

FOREIGN PATENT DOCUMENTS

EP 1355278 10/2003
GB 2 268 608 1/1994

(Continued)

OTHER PUBLICATIONS

International Search Report and Written Opinion issued in PCT/
US07/68325 on Feb. 27, 2008.

(Continued)

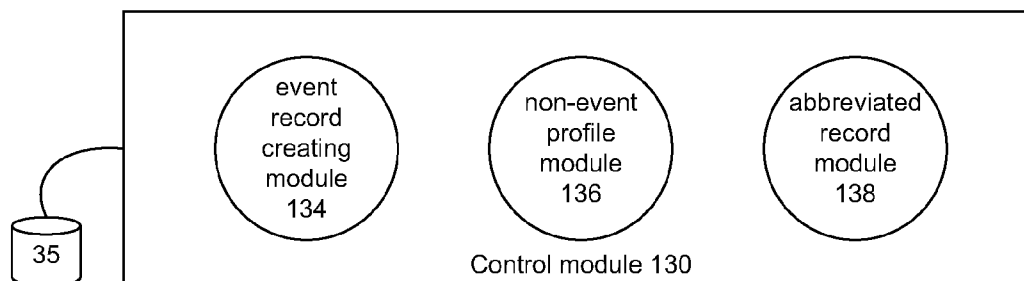
Primary Examiner — Thomas Mullen

(74) *Attorney, Agent, or Firm* — Van Pelt, Yi & James LLP

(57) **ABSTRACT**

Valid driving events and non-events are identified, and
detailed information is stored for valid events. Valid events
are those captured driving events that are essential to testing
of a driver's risky behavior. Remaining captured events which
are not identified as involving risky behavior are non-events.
At least one event capture device captures location, trigger
force, images, and other information that collectively com-
prise an event. An event detector compares the captured event
data to previously created non-event profiles and determines
whether the captured event is a non-event. An abbreviated
record is created for each identified non-event. For valid
driving events, detailed driving event records are created. The
records are stored at an evaluation server and are accessible to
an analysis station for scoring and review.

27 Claims, 10 Drawing Sheets



U.S. PATENT DOCUMENTS

4,533,962 A	8/1985	Decker et al.	5,521,633 A	5/1996	Nakajima et al.
4,558,379 A	12/1985	Hutter et al.	5,523,811 A	6/1996	Wada et al.
4,593,313 A	6/1986	Nagasaki et al.	5,526,269 A	6/1996	Ishibashi et al.
4,621,335 A	11/1986	Bluish et al.	5,530,420 A	6/1996	Tsuchiya et al.
4,625,210 A	11/1986	Sagl	5,537,156 A	7/1996	Katayama
4,630,110 A	12/1986	Cotton et al.	5,539,454 A	7/1996	Williams
4,632,348 A	12/1986	Keesling et al.	5,541,590 A	7/1996	Nishio
4,638,289 A	1/1987	Zottnik	5,544,060 A	8/1996	Fujii et al.
4,646,241 A	2/1987	Ratchford et al.	5,546,191 A	8/1996	Hibi et al.
4,651,143 A	3/1987	Yamanaka	5,546,305 A	8/1996	Kondo
4,758,888 A	7/1988	Lapidot	5,548,273 A	8/1996	Nicol et al.
4,763,745 A	8/1988	Eto et al.	5,552,990 A	9/1996	Ihara et al.
4,785,474 A	11/1988	Bernstein et al.	5,559,496 A	9/1996	Dubats
4,789,904 A	12/1988	Peterson	5,568,211 A	10/1996	Bamford
4,794,566 A	12/1988	Richards et al.	5,570,127 A	10/1996	Schmidt
4,804,937 A	2/1989	Barbiaux et al.	5,574,443 A	11/1996	Hsieh
4,806,931 A	2/1989	Nelson	D376,571 S	12/1996	Kokat
4,814,896 A	3/1989	Heitzman et al.	5,581,464 A	12/1996	Woll et al.
4,837,628 A	6/1989	Sasaki	5,590,948 A	1/1997	Moreno
4,839,631 A	6/1989	Tsuji	5,596,382 A	1/1997	Bamford
4,843,463 A	6/1989	Michetti	5,600,775 A	2/1997	King et al.
4,843,578 A	6/1989	Wade	5,610,580 A	3/1997	Lai
4,876,597 A	10/1989	Roy et al.	5,612,686 A	3/1997	Takano et al.
4,883,349 A	11/1989	Mittelhauser	5,631,638 A	5/1997	Kaspar et al.
4,896,855 A	1/1990	Furnish	5,638,273 A	6/1997	Coirer et al.
4,930,742 A	6/1990	Schofield et al.	5,642,106 A	6/1997	Hancock et al.
4,936,533 A	6/1990	Adams et al.	5,646,856 A	7/1997	Kaesser
4,939,652 A	7/1990	Steiner	5,652,706 A	7/1997	Morimoto et al.
4,942,464 A	7/1990	Milatz	RE35,590 E	8/1997	Bezos et al.
4,945,244 A	7/1990	Castleman	5,654,892 A	8/1997	Fujii et al.
4,949,186 A	8/1990	Peterson	5,659,355 A	8/1997	Barron et al.
4,980,913 A	12/1990	Skret	5,667,176 A	9/1997	Zamarripa et al.
4,987,541 A	1/1991	Levente et al.	5,669,698 A	9/1997	Veldman et al.
4,992,943 A	2/1991	McCracken	5,671,451 A	9/1997	Takahashi et al.
5,012,335 A	4/1991	Cohodar	5,677,979 A	10/1997	Squicciarini et al.
5,027,104 A	6/1991	Reid	5,680,117 A	10/1997	Arai et al.
5,056,056 A	10/1991	Gustin	5,680,123 A	10/1997	Lee
5,057,820 A	10/1991	Markson et al.	5,689,442 A	11/1997	Swanson et al.
5,096,287 A	3/1992	Kakinami et al.	5,696,705 A	12/1997	Zykan
5,100,095 A	3/1992	Haan et al.	5,706,362 A	1/1998	Yabe
5,111,289 A	5/1992	Lucas et al.	5,712,679 A	1/1998	Coles
5,140,434 A	8/1992	Van Blessinger et al.	5,717,456 A	2/1998	Rudt et al.
5,140,436 A	8/1992	Blessinger	5,719,554 A	2/1998	Gagnon
5,144,661 A	9/1992	Shamosh et al.	5,784,521 A	7/1998	Nakatani et al.
5,178,448 A	1/1993	Adams et al.	5,790,403 A	8/1998	Nakayama
5,196,938 A	3/1993	Blessinger	5,790,973 A	8/1998	Blaker et al.
5,223,844 A	6/1993	Mansell et al.	5,793,420 A	8/1998	Schmidt
5,262,813 A	11/1993	Scharton	5,794,165 A	8/1998	Minowa et al.
5,308,247 A	5/1994	Dyrdek	5,797,134 A	8/1998	McMillan et al.
5,309,485 A	5/1994	Chao	5,798,458 A	8/1998	Monroe
5,311,197 A	5/1994	Sorden et al.	5,800,040 A	9/1998	Santo
5,321,753 A	6/1994	Gritton	5,802,545 A	9/1998	Coverdill
5,327,288 A	7/1994	Wellington et al.	5,802,727 A	9/1998	Blank et al.
5,330,149 A	7/1994	Haan et al.	5,815,093 A	9/1998	Kikinis
5,343,527 A	8/1994	Moore	5,825,412 A	10/1998	Hobson et al.
5,353,023 A	10/1994	Mitsugi	5,844,505 A	12/1998	Van Ryzin
5,361,326 A	11/1994	Aparicio, IV et al.	5,896,167 A	4/1999	Omae et al.
5,387,926 A	2/1995	Bellan	5,897,606 A	4/1999	Miura et al.
5,388,045 A	2/1995	Kamiya et al.	5,899,956 A	5/1999	Chan
5,404,330 A	4/1995	Lee et al.	5,901,806 A	5/1999	Takahashi
5,408,330 A	4/1995	Squicciarini et al.	5,914,748 A	6/1999	Parulski et al.
5,422,543 A	6/1995	Weinberg	5,926,210 A	7/1999	Hackett et al.
5,430,431 A	7/1995	Nelson	5,946,404 A	8/1999	Bakshi et al.
5,430,432 A	7/1995	Camhi et al.	5,978,017 A	11/1999	Tino
5,435,184 A	7/1995	Pineroli et al.	6,002,326 A	12/1999	Turner
5,445,024 A	8/1995	Riley, Jr. et al.	6,006,148 A	12/1999	Strong
5,445,027 A	8/1995	Zorner	6,008,723 A	12/1999	Yassan
5,446,659 A	8/1995	Yamawaki	6,008,841 A	12/1999	Charlson
5,455,625 A	10/1995	Englander	6,009,370 A	12/1999	Minowa et al.
5,455,716 A	10/1995	Suman et al.	6,011,492 A	1/2000	Garesche
5,465,079 A	11/1995	Bouchard et al.	6,028,528 A	2/2000	Lorenzetti et al.
5,473,729 A	12/1995	Bryant et al.	6,037,860 A	3/2000	Zander et al.
5,477,141 A	12/1995	Nather et al.	6,037,977 A	3/2000	Peterson
5,495,242 A	2/1996	Kick et al.	6,064,792 A	5/2000	Fox et al.
5,497,419 A	3/1996	Hill	6,092,193 A	7/2000	Loomis et al.
5,499,182 A	3/1996	Ousborne	6,122,738 A	9/2000	Millard
5,504,482 A	4/1996	Schreder	6,141,611 A	10/2000	Mackey et al.
5,515,285 A	5/1996	Garrett, Sr. et al.	6,144,296 A	11/2000	Ishida et al.
			6,151,065 A	11/2000	Steed et al.

6,163,338	A	12/2000	Johnson et al.
6,167,186	A	12/2000	Kawasaki et al.
6,181,373	B1	1/2001	Coles
6,185,490	B1	2/2001	Ferguson
6,211,907	B1	4/2001	Seaman et al.
6,218,960	B1	4/2001	Ishikawa et al.
6,246,933	B1	6/2001	Bague
6,253,129	B1	6/2001	Jenkins et al.
6,337,622	B1	1/2002	Sugano
6,389,340	B1	5/2002	Rayner
6,405,112	B1	6/2002	Rayner
6,405,132	B1	6/2002	Breed et al.
6,408,232	B1	6/2002	Cannon et al.
6,449,540	B1	9/2002	Rayner
6,611,755	B1	8/2003	Coffee et al.
6,679,702	B1	1/2004	Rau
6,714,894	B1	3/2004	Tobey et al.
6,718,239	B2	4/2004	Rayner
6,895,248	B1	5/2005	Akyol et al.
7,100,190	B2	8/2006	Johnson et al.
2001/0005804	A1	6/2001	Rayner
2002/0035422	A1	3/2002	Sasaki
2002/0059453	A1	5/2002	Eriksson et al.
2002/0111725	A1	8/2002	Burge
2002/0163532	A1	11/2002	Thomas et al.
2002/0169529	A1	11/2002	Kim
2003/0080878	A1	5/2003	Kirmuss
2003/0125854	A1	7/2003	Kawasaki et al.
2003/0144775	A1	7/2003	Klausner
2003/0154009	A1	8/2003	Basir et al.
2003/0158638	A1	8/2003	Yakes et al.
2003/0187704	A1	10/2003	Hashiguchi et al.
2003/0191568	A1	10/2003	Breed
2003/0214585	A1	11/2003	Bakewell
2004/0039503	A1	2/2004	Doyle
2004/0103010	A1	5/2004	Wahlbin et al.
2004/0209594	A1	10/2004	Naboulsi
2005/0021199	A1	1/2005	Zimmerman et al.
2005/0159964	A1	7/2005	Sonnenrein et al.
2005/0166258	A1	7/2005	Vasilevsky et al.
2005/0171692	A1	8/2005	Hamblen et al.
2005/0185936	A9	8/2005	Lao et al.
2005/0258942	A1	11/2005	Manasseh et al.
2006/0007151	A1	1/2006	Ram
2006/0015233	A1	1/2006	Olsen et al.
2006/0025897	A1	2/2006	Shostak et al.
2006/0040239	A1	2/2006	Cummins et al.
2006/0053038	A1	3/2006	Warren et al.
2006/0055521	A1	3/2006	Blanco et al.
2006/0057543	A1	3/2006	Roald
2006/0078853	A1	4/2006	Lanktree
2006/0092043	A1	5/2006	Lagassey
2006/0095175	A1	5/2006	DeWaal et al.
2006/0095349	A1	5/2006	Morgan et al.
2006/0212195	A1	9/2006	Veith et al.
2006/0242680	A1	10/2006	Johnson et al.
2007/0001831	A1	1/2007	Raz et al.
2007/0124332	A1	5/2007	Ballesty et al.
2007/0135979	A1*	6/2007	Plante 701/35
2007/0136078	A1	6/2007	Plante
2007/0143499	A1	6/2007	Chang
2007/0150140	A1	6/2007	Seymour
2007/0241874	A1	10/2007	Okpysh et al.
2007/0260677	A1	11/2007	DeMarco et al.

FOREIGN PATENT DOCUMENTS

JP	5-137144	6/1993
JP	5-294188	11/1993
JP	8-124069	5/1996
JP	10-076880	3/1998
WO	WO 88/09023	11/1988
WO	WO 90/05076	5/1990
WO	WO 94/27844	12/1994
WO	WO 96/00957	1/1996
WO	WO 97/01246	1/1997
WO	WO 99/37503	7/1999
WO	WO 99/40545	8/1999
WO	WO 99/62741	12/1999
WO	WO00/07150	2/2000

WO	WO 00/48033	8/2000
WO	WO 00/77620	12/2000
WO	WO 01/25054	4/2001

OTHER PUBLICATIONS

DRIVECAM, Inc., User's Manual for DRIVECAM Video Systems' Hindsight 20/20 Software Version 4.0 (2003).

Gary and Sophia Rayner, Final Report for Innovations Deserving Exploratory Analysis (IDEA) Intelligent Transportation Systems (ITS) Programs' Project 84, I-Witness Black Box Recorder, San Diego, CA. Nov. 2001.

Panasonic Corporation, Video Cassette Recorder (VCR) Operating Instructions for Models No. PV-V4020/PV-V4520.

JVC Company of America, JVC Video Cassette Recorder HR-IP820U Instructions (1996).

Hans Fantel, Video; Search Methods Make a Difference in Picking VCR's, NY Times, Aug. 13, 1989.

Dan Carr, Flash Video template: Video Presentation with Navigation, Jan. 16, 2006.

I/O Port Racing Supplies' website discloses using Traqmate's Data Acquisition with Video Overlay system in conjunction with professional driver coaching sessions (available at http://www.ioportracing.com/Merchant2/merchant.mvc?Screen=CTGY&Category_Code=coaching), printed from site on Jan. 11, 2012.

GE published its VCR User's Guide for Model VG4255 in 1995.

Adaptec published and sold its VideoOh! DVD software USB 2.0 Edition in at least Jan. 24, 2003.

Traqmate GPS Data Acquisition's Traqmate Data Acquisition with Video Overlay system was used to create a video of a driving event on Oct. 2, 2005 (available at <http://www.trackvision.net/phpBB2/viewtopic.php?t=51&sid=1184fbbcb3be5c87ffa0f2ee6e2da76>), printed from site on Jan. 11, 2012.

David Vogeeler et al., Macromedia Flash Professional 8 UNLEASHED (Sams Oct. 12, 2005) d in Nov. 2005.

Jean (DriveCam vendor), "DriveCam brochure", Nov. 6, 2002.

"The DriveCam", Nov. 6, 2002.

Jean (DriveCam vendor), "DC Data Sheet", Nov. 6, 2002.

"Driver Feedback System", Jun. 12, 2001.

Jean (DriveCam vendor), "Feedback Data Sheet", Nov. 6, 2002.

"Interior Camera Data Sheet", Oct. 26, 2001.

Jean (DriveCam vendor), "HindSight 20-20 Data Sheet", Nov. 4, 2002.

"DriveCam Driving Feedback System", Mar. 15, 2004.

Glenn Oster, "HindSight 20/20 v4.0 Software Installation", 1 of 2, Jun. 20, 2003.

Glenn Oster, "HindSight 20/20 v4.0 Software Installation", 2 of 2, Jun. 20, 2003.

Julie Stevens, "DriveCam Services", Nov. 16, 2004.

Julie Stevens, "Program Support Roll-Out & Monitoring", Jul. 13, 2004.

Jessyca Wallace, "The DriveCam Driver Feedback System", Apr. 6, 2004.

Karen, "Managers Guide to the DriveCam Driving Feedback System", Jul. 30, 2002.

Jessyca Wallace, "Analyzing and Processing DriveCam Recorded Events", Oct. 6, 2003.

Del Lisk, "DriveCam Training Handout Ver4", Feb. 3, 2005.

Jessyca Wallace, "Overview of the DriveCam Program", Dec. 15, 2005.

"DriveCam—Illuminator Data Sheet", Oct. 2, 2004.

Karen, "Downloading Options to HindSight 20/20", Aug. 6, 2002.

Bill, "DriveCam—FAQ", Dec. 12, 2003.

David Maher, "DriveCam Brochure Folder", Jun. 6, 2005.

"Passanger Transportation Mode Brochure", May 2, 2005.

Quinn Maughan, "DriveCam Unit Installation", Jul. 21, 2005.

Glenn Oster, "Illuminator Installation", Oct. 3, 2004.

Quinn Maughan, "HindSight Installation Guide", Sep. 29, 2005.

Quinn Maughan, "HindSight Users Guide", Jun. 20, 2005.

"World News Tonight", CBS Television New Program discussing teen drivers using the DriveCam Program and DriveCam Technology, Oct. 10, 2005, On PC formatted CD-R, World News Tonight. wmv, 7.02 MB, Created Jan. 12, 2011.

"World News Tonight", PBS Television New Program discussing teen drivers using the DriveCam Program and DriveCam Technology, Oct. 10, 2005, on PC formatted CD-R, Teens Behind the Wheel. wmv, 236 MB, Created Jan. 12, 2011.

Quinn Maughan, "Enterprise Services", Apr. 17, 2006.

Quinn Maughan, "DriveCam Enterprise Services", Jan. 5, 2006.

Quinn Maughan, "DriveCam Managed Services", Jan. 5, 2006.

Quinn Maughan, "DriveCam Standard Edition", Jan. 5, 2006.

Kathy Latus (Latus Design), "Case Study—Time Warner Cable", Sep. 23, 2005.

Kathy Latus (Latus Design), "Case Study—Cloud 9 Shuttle", Sep. 23, 2005.

Kathy Latus (Latus Design), "Case Study—Lloyd Pest Control", Jul. 19, 2005.

Bill Siuru, "DriveCam Could Save You Big Bucks", Land Line Magazine, May-Jun. 2000.

J. Gallagher, "Lancer Recommends Tech Tool", Insurance and Technology Magazine, Feb. 2002.

"Ambulance Companies Use Video Technology to Improve Driving Behavior", Ambulance Industry Journal, Spring 2003.

Lisa McKenna, "A Fly on the Windshield?", Pest Control Technology Magazine, Apr. 2003.

Chris Woodyard, "Shuttles save with DriveCam", Dec. 9, 2003.

David Cullen, "Getting a real eyeful", Fleet Owner Magazine, Feb. 2002.

Ronnie Rittenberry, "Eyes on the Road", Jul. 2004.

U.S. Appl. No. 11/296,906, filed Dec. 8, 2005, File History.

U.S. Appl. No. 11/298,069, filed Dec. 9, 2005, File History.

U.S. Appl. No. 11/299,028, filed Dec. 9, 2005, File History.

U.S. Appl. No. 11/593,659, filed Nov. 7, 2006, File History.

U.S. Appl. No. 11/593,682, filed Nov. 7, 2006, File History.

U.S. Appl. No. 11/595,015, filed Nov. 9, 2006, File History.

U.S. Appl. No. 11/637,754, filed Dec. 13, 2006, File History.

U.S. Appl. No. 11/637,755, filed Dec. 13, 2006, File History.

U.S. Appl. No. 11/297,669, filed Dec. 8, 2005, File History.

"DriveCam, Inc.'s Disclosure of Proposed Constructions and Extrinsic Evidence Pursuant to Patent L.R. 4.1.a & 4.1.b" in *DriveCam, Inc. v. SmartDrive Systems, Inc.*, Case No. 3:11-CV-00997-H-RBB, for the Southern District of California. Nov. 8, 2011.

"Preliminary Claim Construction and Identification of Extrinsic Evidence of Defendant/Counterclaimant SmartDrive Systems, Inc." in *DriveCam, Inc. v. SmartDrive Systems, Inc.*, Case No. 3:11-CV-00997-H (RBB), for the Southern District of California. Nov. 8, 2011.

"DriveCam, Inc.'s Disclosure of Responsive Constructions and Extrinsic Evidence Pursuant to Patent L.R. 4.1.c & 4.1.d" in *DriveCam, Inc. v. SmartDrive Systems, Inc.*, Case No. 3:11-CV-00997-H-RBB, for the Southern District of California. Nov. 15, 2011.

"Responsive Claim Construction and Identification of Extrinsic Evidence of Defendant/Counterclaimant SmartDrive Systems, Inc." in *DriveCam, Inc. v. SmartDrive Systems, Inc.*, Case No. 3:11-CV-00997-H (RBB), for the Southern District of California. Nov. 15, 2011.

"Joint Claim Construction Chart" in *DriveCam, Inc. v. SmartDrive Systems, Inc.*, Case No. 11-CV-0997-H (RBB), for the Southern District of California, Document 43, filed Dec. 1, 2011, pp. 1-2.

Joint Claim Construction Chart, U.S. Patent No. 6,389,340, "Vehicle Data Recorder" for Case No. 3:11-CV-00997-H-RBB, Document 43-1, filed Dec. 1, 2011, pp. 1-33.

"Joint Claim Construction Worksheet" in *DriveCam, Inc. v. SmartDrive Systems, Inc.*, Case No. 3:11-CV-00997 H (RBB), for the Southern District of California, Document 44, filed Dec. 1, 2011, pp. 1-2.

Joint Claim Construction Worksheet, U.S. Patent No. 6,389,340, "Vehicle Data Reporter" for Case No. 3:11-CV-00997-H-RBB, Document 44-1, filed Dec. 1, 2011, pp. 1-10.

"Answer to Amended Complaint; Counterclaims; and Demand for Jury Trial" in *DriveCam, Inc. v. SmartDrive Systems, Inc.*, Case No. 3:11-CV-00997 H (RBB), for the Southern District of California, Document 47, filed Dec. 13, 2011, pp. 1-15.

"First Amended Answer to Amended Complaint and First Amended Counterclaims; and Demand for Jury Trial" in *DriveCam, Inc. v. SmartDrive Systems, Inc.*, Case No. 3:11-CV-00997 H (RBB), for the Southern District of California, Document 53, filed Dec. 20, 2011, pp. 1-48.

"First Amended Answer to Amended Complaint and First Amended Counterclaims; and Demand for Jury Trial" in *DriveCam, Inc. v. SmartDrive Systems, Inc.*, Case No. 3:11-CV-00997 H (RBB), for the Southern District of California, Document 55, filed Jan. 1, 2012, pp. 86-103.

DriveCam, User's Manual for DriveCam Video Systems', HindSight 20/20 Software Version 4.0, S002751-S002804 (2003).

SmartDrives Systems, Inc.'s Production, S014246-S014255, Nov. 16, 2011.

"HindSight v4.0 Users Guide", DriveCam Video Systems, Apr. 25, 2005.

"Supplement to DriveCam's Disclosure of Asserted Claims and Preliminary Infringement Contentions" in *DriveCam, Inc. v. SmartDrive Systems, Inc.*, Case No. 3:11-CV-00997-H-RBB, for the Southern District of California. Oct. 14, 2011.

"DriveCam's Disclosure of Asserted Claims and Preliminary Infringement Contentions" in *DriveCam, Inc. v. SmartDrive Systems, Inc.*, Case No. 3:11-CV-00997-H-RBB, for the Southern District of California. Aug. 19, 2011.

DriveCam, Inc.'s Infringement Contentions Exhibit A, U.S. Patent 6,389,340. Aug. 11, 2011.

DriveCam, Inc.'s Infringement Contentions Exhibit B, U.S. Patent 7,659,827. Aug. 19, 2011.

DriveCam, Inc.'s Infringement Contentions Exhibit C, U.S. Patent 7,804,426. Aug. 19, 2011.

DriveCam Extrinsic Evidence with Patent LR 4.1.a Disclosures, Nov. 8, 2011.

"Amended Complaint for Patent Infringement, Trade Secret Misappropriation, Unfair Competition and Conversion" in *DriveCam, Inc. v. SmartDrive Systems, Inc.*, Case No. 3:11-CV-00997-H-RBB, for the Southern District of California, Document 34, filed Oct. 20, 2011, pp. 1-15.

Panasonic Corporation, Video Cassette Recorder (VCR) Operating Instructions for Models No. PV-V4020/PV-V4520 (1998) (Exhibit 8) (hereinafter "Panasonic").

Drivecam.com as retrieved by the Internet Wayback Machine as of Mar. 5, 2005.

International Search Report and Written Opinion issued in PCT/US07/68332 on Mar. 3, 2008.

International Search Report and Written Opinion issued in PCT/US07/68333 on Mar. 5, 2008.

International Search Report and Written Opinion issued in PCT/US07/68334 on Mar. 5, 2008.

International Search Report issued in PCT/US07/68328 on Oct. 15, 2007.

Written Opinion issued in PCT/US07/68328 on Oct. 15, 2007.

International Search Report and Written Opinion issued in PCT/US07/68329 on Mar. 3, 2008.

* cited by examiner

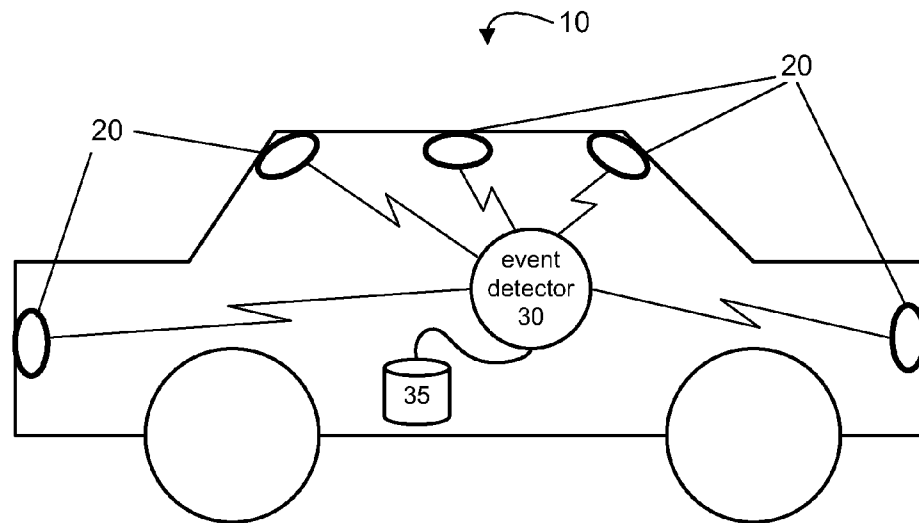


FIG. 1

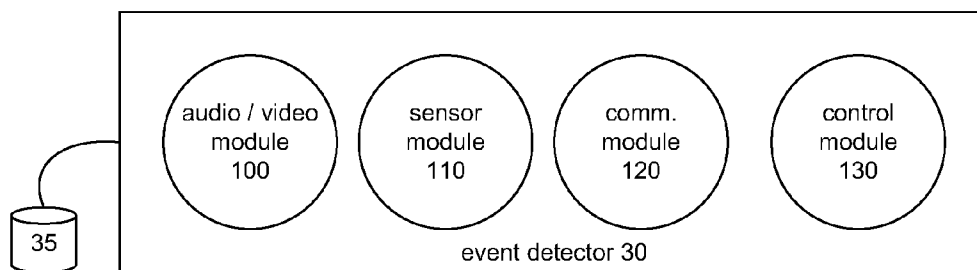


FIG. 2

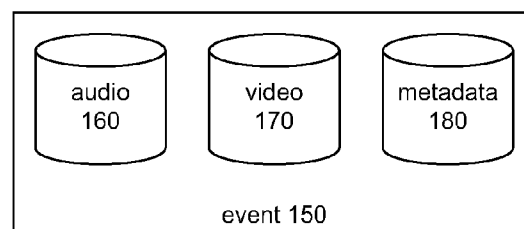


FIG. 3

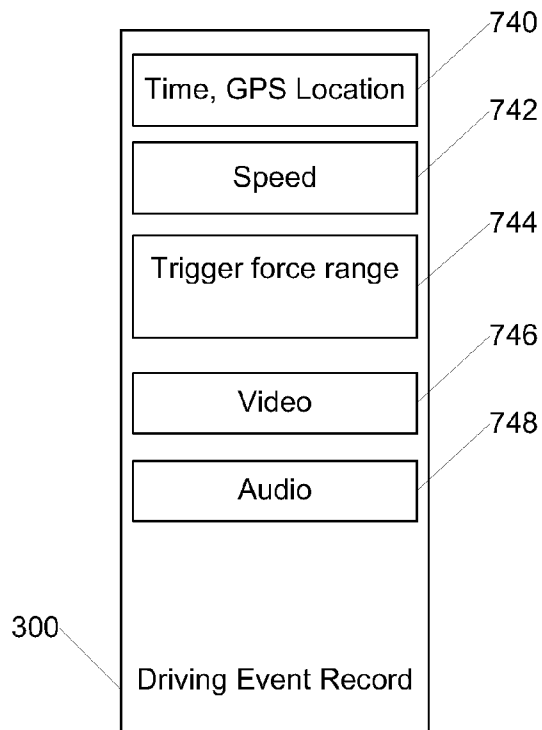


FIG. 4A

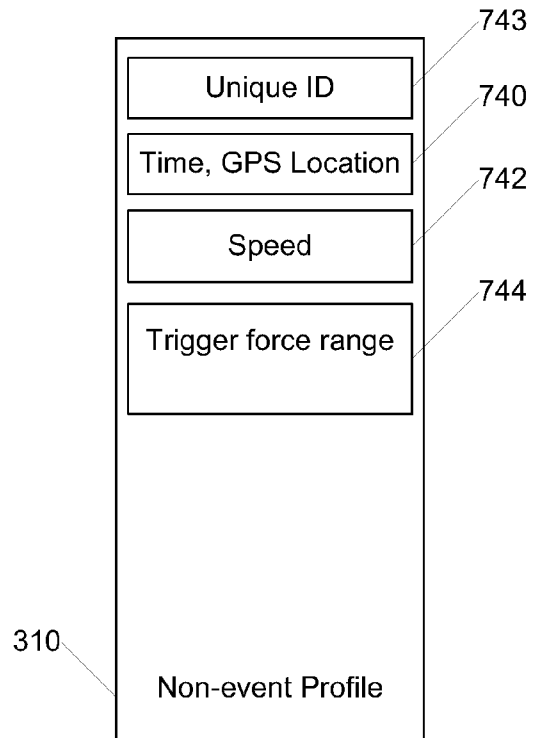


FIG. 4B

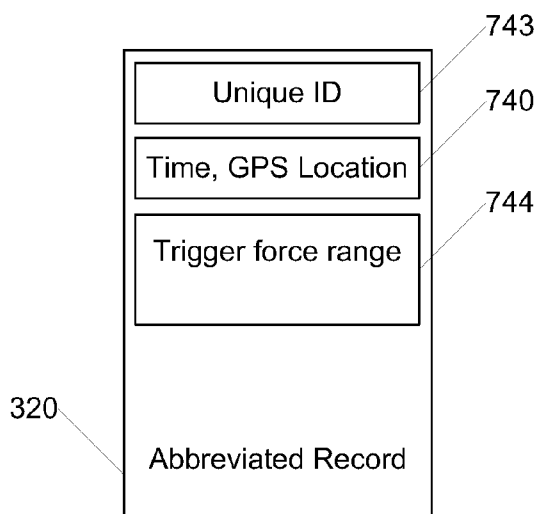


FIG. 4C

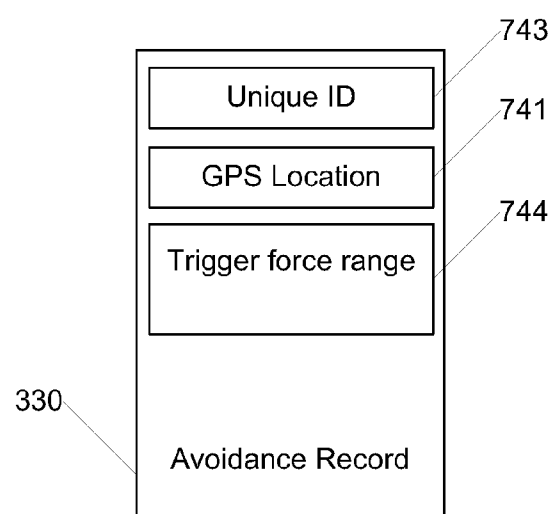


FIG. 4D

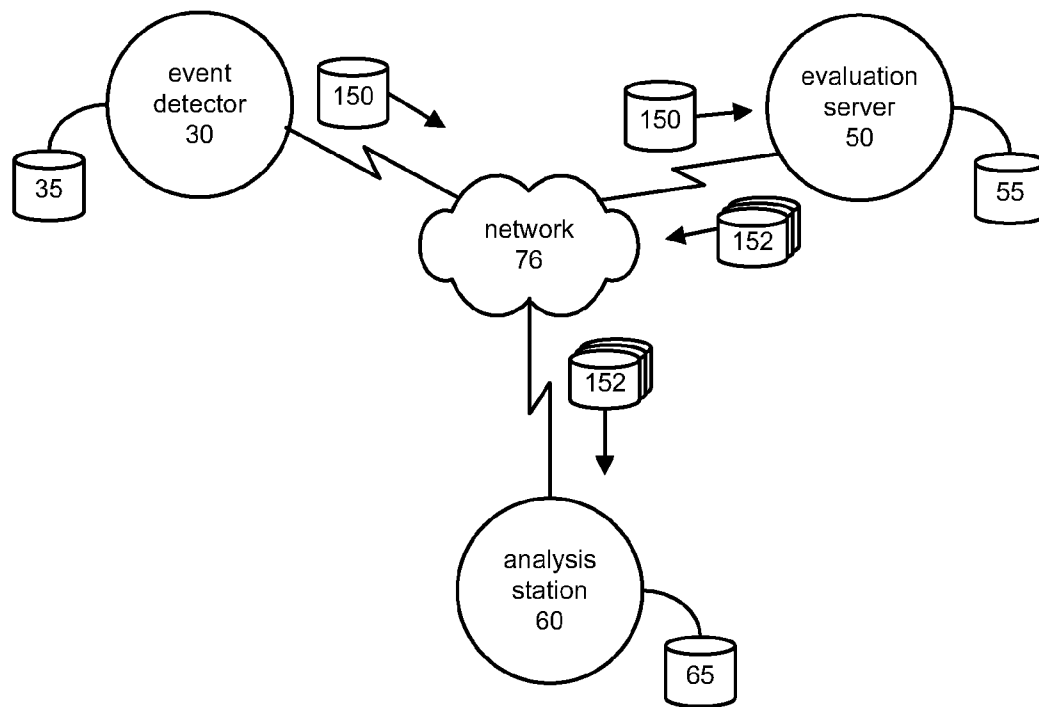


FIG. 5

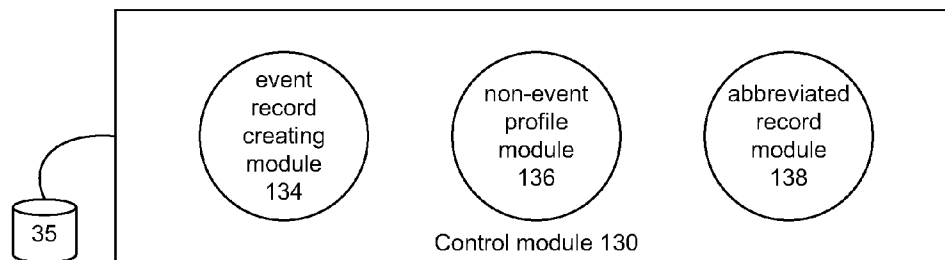


FIG. 6A

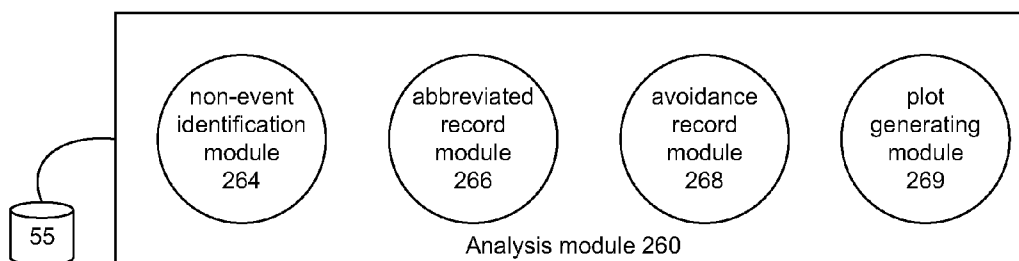


FIG. 6B

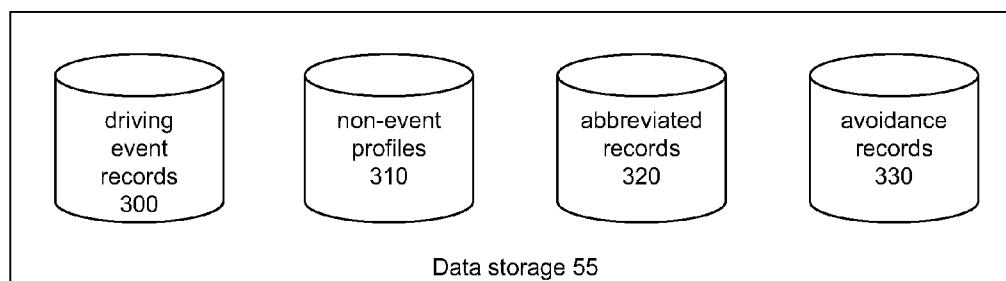


FIG. 6C

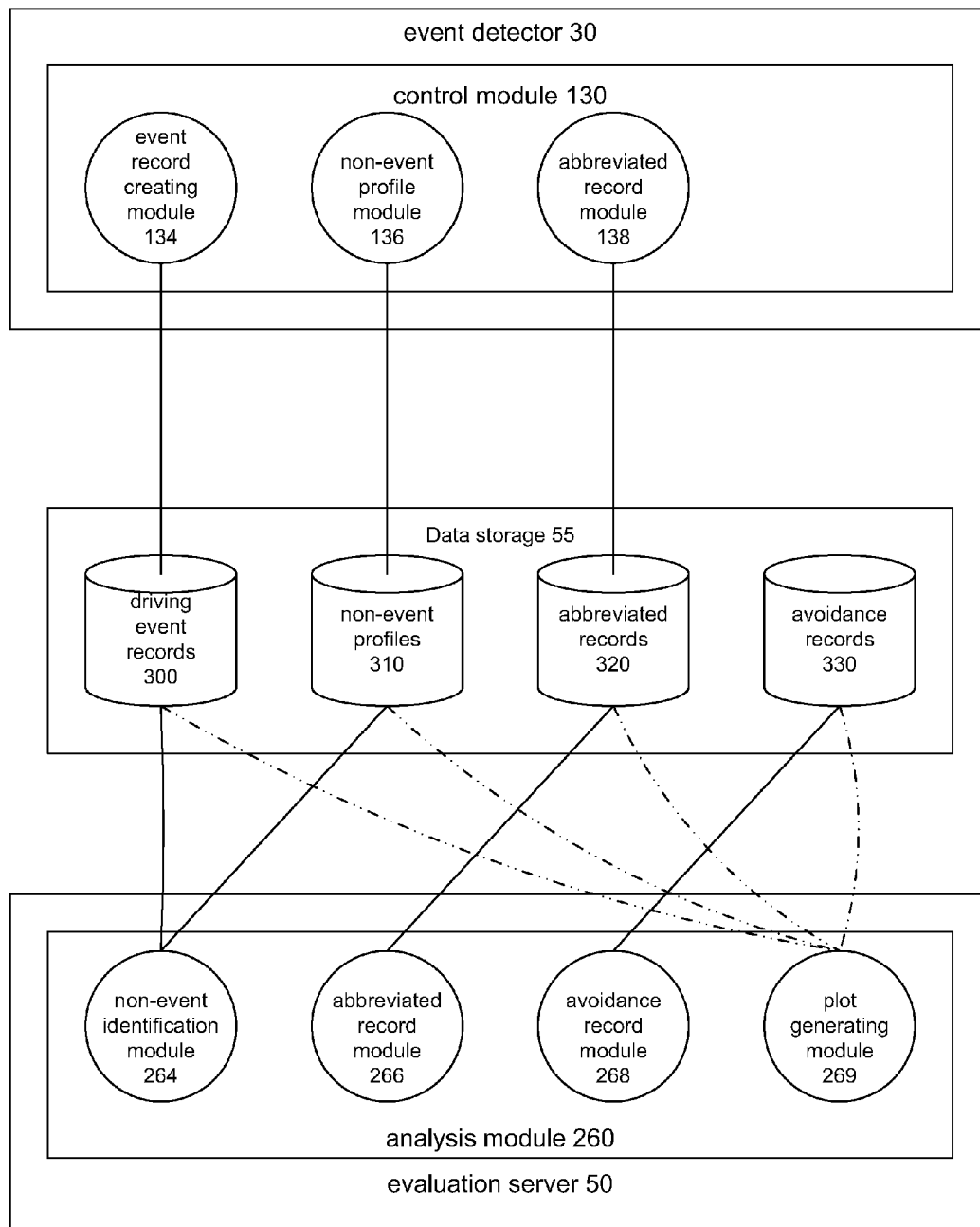


FIG. 7

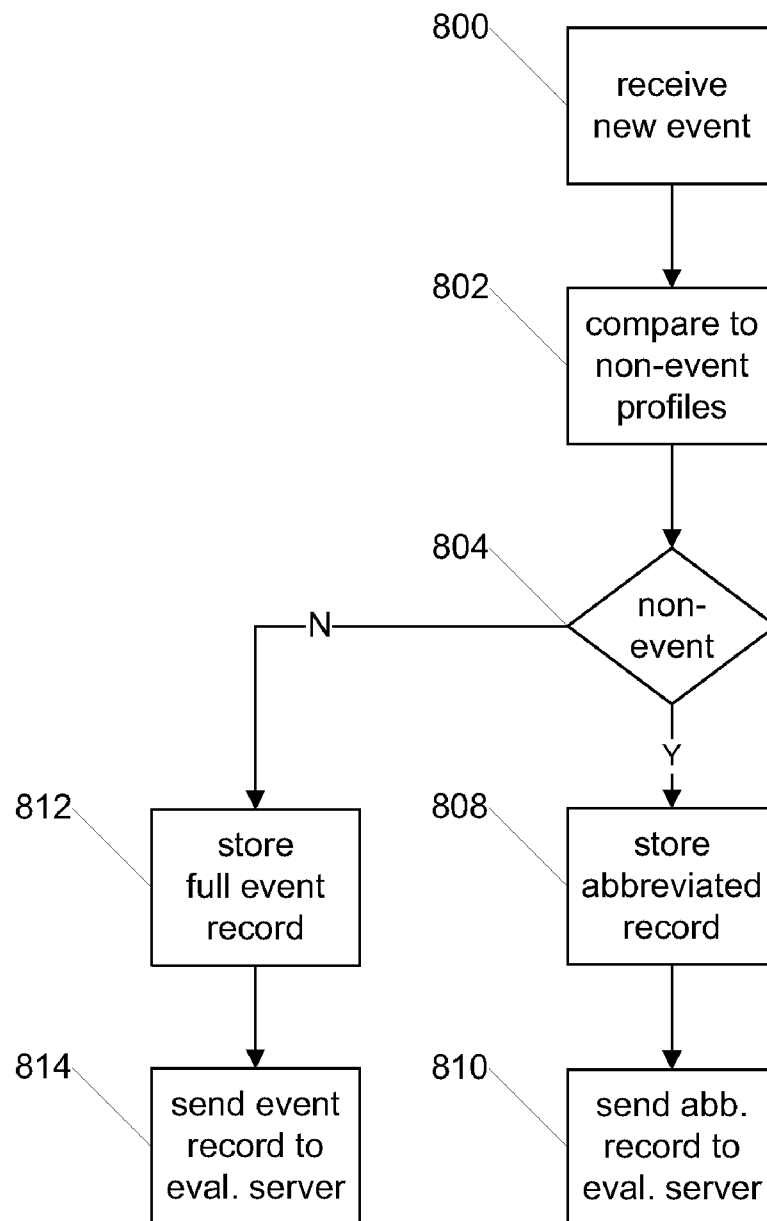


FIG. 8

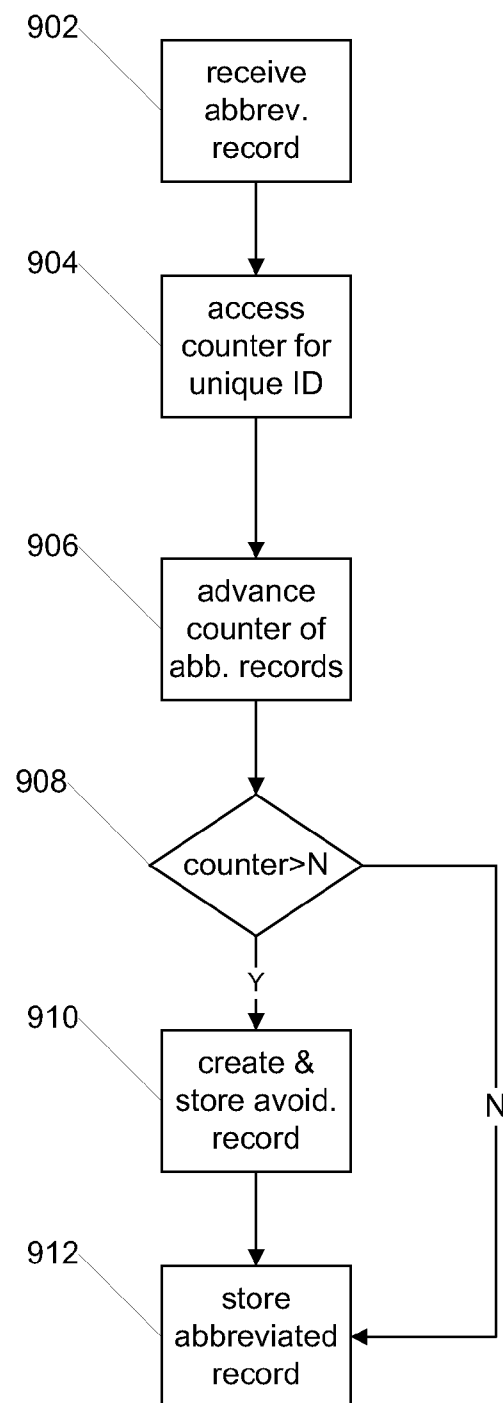
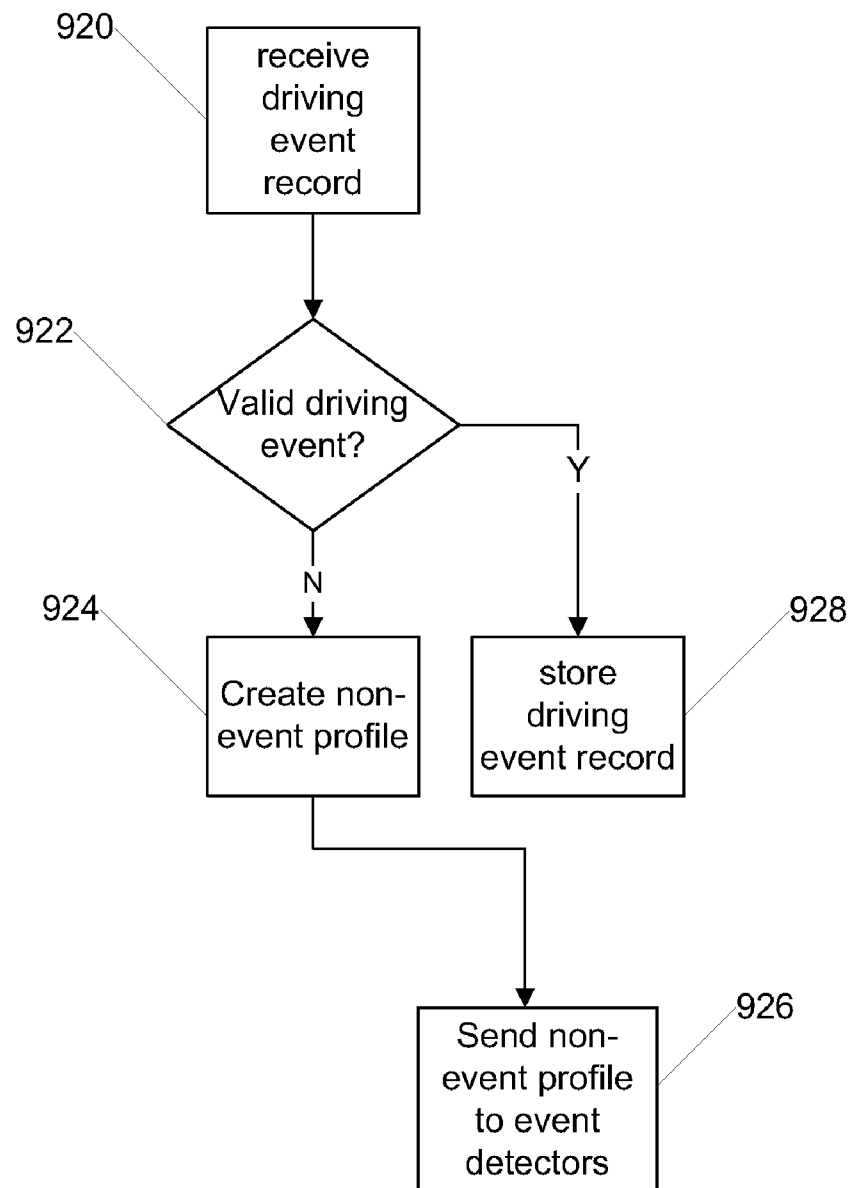


FIG. 9A

**FIG. 9B**

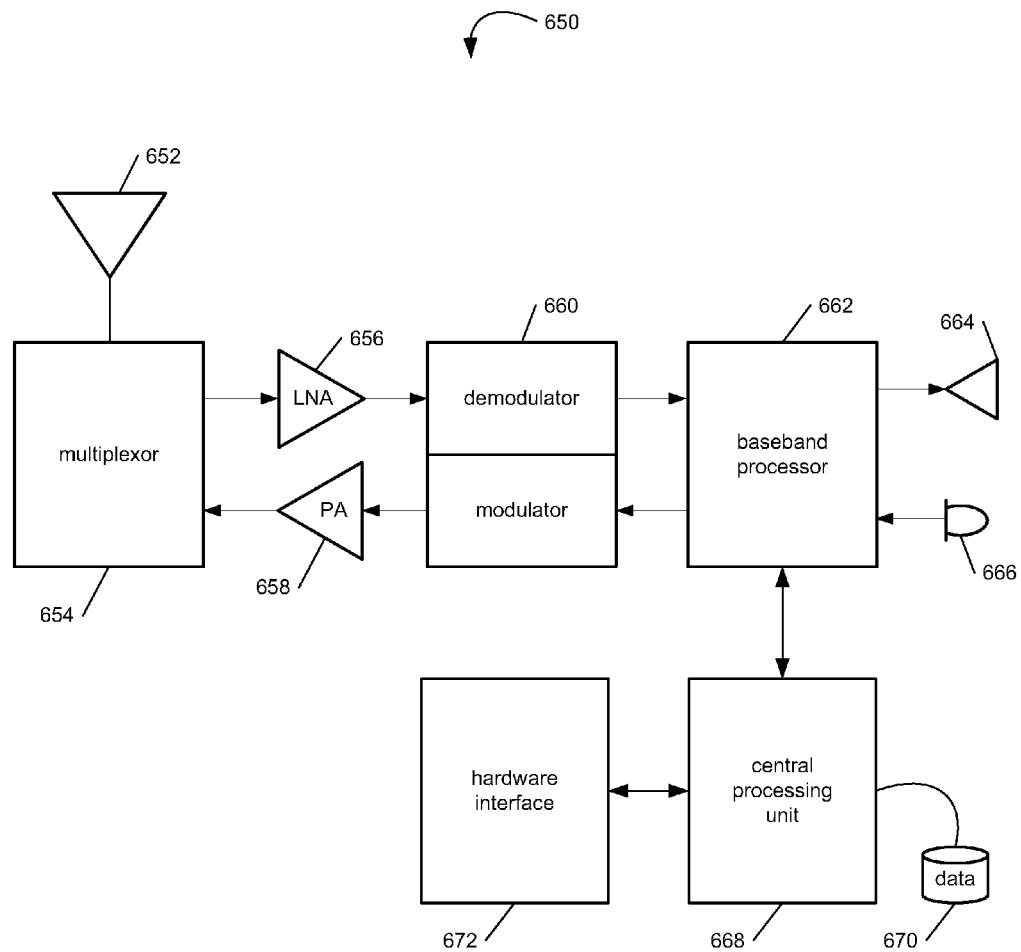


FIG. 10

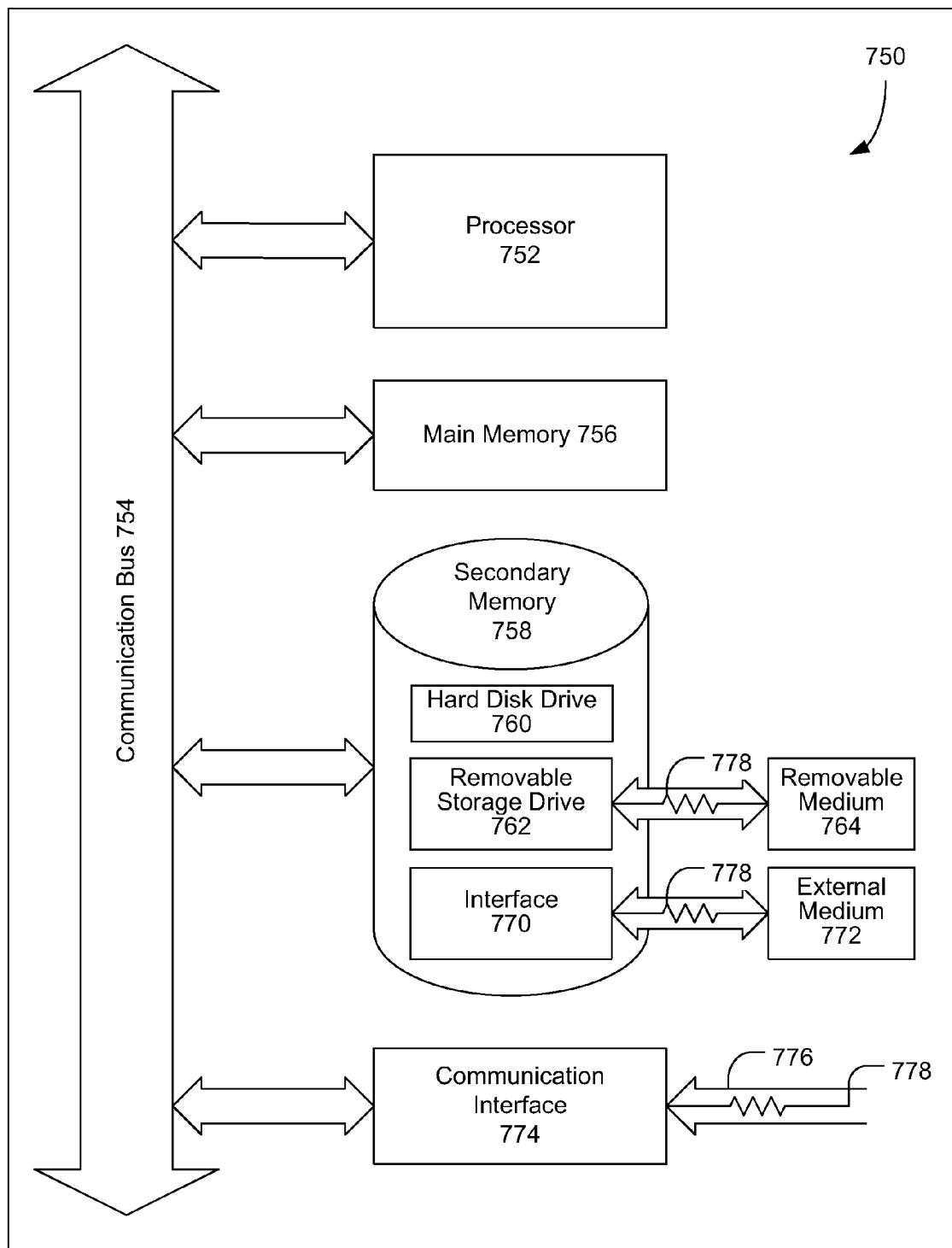


FIG. 11

SYSTEM AND METHOD FOR IDENTIFYING NON-EVENT PROFILES

RELATED APPLICATION

The present application is a continuation-in-part of U.S. patent application Ser. Nos. 11/382,222 (now U.S. Pat. No. 7,659,827) and 11/382,239 (now abandoned) filed May 8, 2006, and Ser. Nos. 11/382,325 (now pending) and 11/382,328 (now abandoned), filed May 9, 2006, of concurrent ownership, all of which are incorporated herein by reference in their entirety.

BACKGROUND

1. Field of the Invention

The present invention generally relates to computer assisted capture of driving events and more specifically relates to streamlining the event capture and review process by identifying driving events that are non-events and thus, do not require review or analysis.

2. Related Art

Conventional systems for identifying risky behavior by fleet drivers are usually cumbersome to manage because of the vast amount of information they collect. Those systems provide such an enormous amount of information because they usually collect more information than is actually required.

In many situations, conventional systems capture more driving information than is necessary. Quite often, event capture devices collect data continuously, and thus, some of the information is captured even though it does not relate to any risky driving behavior at all. For example, the capturing of information may be triggered by an incident that is beyond a driver's control, for example, by a pothole on a road, a railroad crossing, etc., and thus, the collection of the information in such a case is unnecessary.

Also quite often, the same driving event is captured by several event capture devices, and thus, some of the collected information is redundant. For these and several other reasons, the conventional systems usually provide a massive amount of information to be reviewed. Subsequently, the analysis of all collected data is time consuming because it requires identifying which information pertains to non-events and eliminating that information from further review.

Accordingly, what is needed is an efficient system and method for event capture and review that addresses the significant problems in the conventional systems described above.

SUMMARY

Accordingly, a system and method for identifying non-event profiles is provided which determines those driving events that are non-events, stores only a minimal amount of information for non-events and eliminates captured non-events from review and analysis. The non-events are initially identified during operator review. During that review, non-event profiles are created and provided to an event detector for future use in identifying future events matching a previously created non-event profile. For identified non-events, only abbreviated records are created and sent to the evaluation server.

In one aspect, the system for identifying non-event profiles comprises an event detector, an evaluation server, a non-event profile module and an event record module. The event detector is communicatively coupled with a vehicle and is config-

ured to capture driving events, store them and send them to the evaluation server. The evaluation server is communicatively coupled with the vehicle and is configured to receive, evaluate and store driving events (including non-events). The non-event profile module is configured to determine that a driving event is a non-event by comparing driving event data to non-event profiles for non-events. Finally, the event record module is configured to create an event record for any potentially valid driving event and send the event record from the event detector to the evaluation server.

In one aspect, the method for identifying non-event profiles comprises receiving a trigger from a sensing system coupled with an event detector and capturing a driving event at the event detector in response to the trigger. The method further comprises determining that the driving event is a non-event at the event detector, creating an abbreviated record for the non-event and sending the abbreviated record to an evaluation server for storage. The abbreviated record for the non-event can comprise a unique identifier, event time information, a GPS location and trigger force range information.

Other features and advantages of the present invention will become more readily apparent to those of ordinary skill in the art after reviewing the following detailed description and accompanying drawings.

BRIEF DESCRIPTION OF THE DRAWINGS

The details of the present invention, both as to its structure and operation, may be gleaned in part by study of the accompanying drawings, in which like reference numerals refer to like parts, and in which:

FIG. 1 is a block diagram illustrating an example event detector in control of a plurality of event capture devices deployed in a vehicle according to an embodiment of the present invention;

FIG. 2 is a block diagram illustrating an example event detector according to an embodiment of the present invention;

FIG. 3 is a block diagram illustrating an example captured event according to an embodiment of the present invention;

FIG. 4A is a block diagram illustrating an example driving-event record according to an embodiment of the present invention;

FIG. 4B is a block diagram illustrating an example non-event profile according to an embodiment of the present invention;

FIG. 4C is a block diagram illustrating an example abbreviated record according to an embodiment of the present invention;

FIG. 4D is a block diagram illustrating an example avoidance record according to an embodiment of the present invention;

FIG. 5 is a network diagram illustrating an example system for identifying non-event profiles according to an embodiment of the present invention;

FIG. 6A is a block diagram illustrating an example control module according to an embodiment of the present invention;

FIG. 6B is a block diagram illustrating an example analysis module according to an embodiment of the present invention;

FIG. 6C is a block diagram illustrating an example data storage module according to an embodiment of the present invention;

FIG. 7 is a block diagram illustrating an example event detector and an example evaluation server processing events according to an embodiment of the present invention;

3

FIG. 8 is a flow diagram illustrating an example process for the detection of non-events by an event detector according to an embodiment of the present invention;

FIG. 9A is a flow diagram illustrating an example process for the identification and processing of abbreviated records by an evaluation server according to an embodiment of the present invention;

FIG. 9B is a flow diagram illustrating an example process for the identification and processing of driving event records by an evaluation server according to an embodiment of the present invention;

FIG. 10 is a block diagram illustrating an exemplary wireless communication device that may be used in connection with the various embodiments described herein; and

FIG. 11 is a block diagram illustrating an exemplary computer system as may be used in connection with various embodiments described herein.

DETAILED DESCRIPTION

Certain embodiments as disclosed herein provide for systems and methods for identifying non-events, creating non-events profiles, storing only a minimal amount of information for non-events and storing detailed information for valid driving events. Valid events are those captured driving events that are essential to the testing of a driver's risky behavior. A driving event can be identified as a non-event if it involves circumstances not essential to the testing of a driver's risky behavior. For example, a driving event is a non-event if it involves instances beyond a driver's control such as driving over a pothole on the road, a railroad crossing, etc. For identified non-events, only abbreviated records are created and sent to the evaluation server. For all other events, full driving event records including audio, video, and other related information are created and stored for future evaluation and analyzing.

After reading this description, it will become apparent to one skilled in the art how to implement the invention in various alternative embodiments and alternative applications. However, although various embodiments of the present invention will be described herein, it is understood that these embodiments are presented by way of example only and not limitation. As such, this detailed description of various alternative embodiments should not be construed to limit the scope or breadth of the present invention as set forth in the appended claims.

FIG. 1 is a block diagram illustrating an example event detector 30 in control of a plurality of event capture devices 20 deployed in a vehicle 10 according to an embodiment of the present invention. In the illustrated embodiment, the event detector 30 is integrated with the vehicle 10 and is communicatively coupled with the event capture devices 20. The event detector 30 is also configured with data storage 35.

The event detector 30 can be any of a variety of types of computing devices with the ability to execute programmed instructions, receive input from various sensors, and communicate with one or more internal or external event capture devices 20 and other external devices (not shown). An example general purpose computing device that may be employed as all or a portion of the event detector 30 is later described with respect to FIG. 11. An example general purpose wireless communication device that may be employed as all or a portion of an event detector 30 is later described with respect to FIG. 10.

When the event detector 30 identifies a driving event particularly of interest for driving analysis purposes, the event detector 30 instructs one or more event capture devices 20 to

4

send "pre-event" data, "during-the-event" data, and "post-event" data to the event detector 30 to be stored in the data storage area 35. Events may comprise a variety of situations, including automobile accidents, reckless driving, rough driving, or any other type of stationary or moving occurrence that the owner of a vehicle 10 may desire to know about.

The vehicle 10 may have a plurality of event capture devices placed in various locations around the vehicle 10. An event capture device 20 may comprise a video camera, still camera, microphone, and other types of data capture devices. For example, the event capture device 20 may include an accelerometer that senses changes in speed or direction. Additional sensors and/or data capture devices may also be incorporated into the event capture device 20 in order to provide a rich set of information about a detected event.

The data storage area 35 can be any sort of internal or external, fixed or removable memory device and may include both persistent and volatile memories. The function of the data storage area 35 is to maintain data for long-term storage and also to provide efficient and fast access to instructions for applications or modules that are executed by the event capture device 20.

In one embodiment, the event detector 30 in combination with one or more event capture devices 20 identifies an event and stores certain audio and video data along with related information about the event. For example, related information may include the speed of the vehicle when the event occurred, the direction the vehicle was traveling, the location of the vehicle (e.g., from a global positioning system ("GPS") sensor), G-force data and other information from sensors located in and around the vehicle or from the vehicle itself (e.g., from a data bus integral to the vehicle such as a J-1850 vehicle bus). This combination of audio, video, and other data is compiled into an event that can be stored in the data storage 35 on board the vehicle for later delivery to an evaluation server.

FIG. 2 is a block diagram illustrating an example event detector 30 according to an embodiment of the present invention. In the illustrated embodiment, the event detector 30 comprises an audio/video ("AV") module 100, a sensor module 110, a communication module 120, and a control module 130. Additional modules may also be employed to carry out the various functions of the event detector 30, as will be understood by those having skill in the art.

The AV module 100 is configured to manage the audio and video input from one or more event capture devices and storage of the audio and video input. The sensor module 110 is configured to manage one or more sensors that can be integral to the event detector 30 or external from the event detector 30. For example, an accelerometer may be integral to the event detector 30 or it may be located elsewhere in the vehicle. The sensor module 110 may also manage other types of sensor devices such as a GPS sensor, temperature sensor, moisture sensor, or the like (all not shown).

The communication module 120 is configured to manage communications between the event detector 30 and other devices and modules. For example, the communication module 120 may handle communications between the event detector 30 and the various event capture devices. The communication module 120 may also handle communications between the event detector 30 and a memory device, a docking station, or a server such as an evaluation server. The communication module 120 is configured to communicate with these various types of devices and other types of devices via a direct wire link (e.g., USB cable, firewire cable), a direct wireless link (e.g., infrared, Bluetooth), or a wired or wireless network link such as a local area network ("LAN"), a wide

5

area network ("WAN"), a wireless wide area network ("WWAN"), or an IEEE 802 wireless network such as an IEEE 802.16 ("WiFi") network.

The control module **130** is configured to control the actions of remote devices such as event capture devices. For example, the control module **130** may be configured to receive a trigger from the sensor module **110** indicating a valid event and to instruct the event capture devices to send the event data to the event detector.

FIG. **3** is a block diagram illustrating the basic data structure of an example event **150** according to an embodiment of the present invention. In the illustrated embodiment, the event **150** comprises audio data **160**, video data **170**, and metadata **180**. Audio data **160** can be collected from inside the vehicle and/or outside the vehicle. Audio data **160** may also include information from an internal vehicle bus about the baseline noise level of the operating vehicle, if such information is available. Additional information about baseline noise level, radio noise level, conversation noise level, or external noise level may also be included in audio data **160**.

Video data **170** may include still images or moving video captured by one or more cameras mounted in various locations in and around the vehicle. Video data **170** may include images or video from inside the vehicle, outside the vehicle, or both. In one particularly advantageous embodiment, still images and moving video that illustrate the entire area inside the vehicle and the entire 360 degree area surrounding the vehicle are captured by a plurality of image capture devices and included in video data **170**.

Metadata **180** may include a variety of additional information that is available to the event detector **30** at the time of an event. Such additional data may include the velocity and direction of the vehicle, the GPS location of the vehicle, elevation, time, temperature, and vehicle engine and electrical component information captured from an internal vehicle bus, just to name a few. Additional information may also be included such as the number of occupants in the vehicle, whether seatbelts were fastened, whether airbags were deployed, whether evasive maneuvering was attempted as determined by the route of the vehicle prior to the event. As will be understood by those skilled in the art, metadata **180** may include an extremely rich variety of information limited only by the scope and type of information obtained prior to, during, and after an event.

FIG. **5** is a network diagram illustrating an example system for identifying non-events according to an embodiment of the present invention and for storing different types of event data depending on whether a captured driving event is a valid driving event requiring further evaluation, or a non-event. In this case, a non-event is an event which was out of the driver's control and did not involve any driver error or risky behavior. In the illustrated embodiment, the system includes an event detector **30**, an evaluation server **50**, and an analysis station **60**. The event detector **30**, the evaluation server **50** and the analysis station **60** communicate with each other via a network **76**, each of them coupled with a data storage area **35**, **55**, and **65**, respectively. Additional event detectors **30**, evaluation servers **50**, and analysis stations **60** may also be included. It will be understood that the analysis station **60** may be located at the same site as the evaluation server in alternative embodiments, and may be linked to the evaluation server via a local network or the like in that case.

The function of the event detector **30** is to identify and capture a plurality of events and send data structures representing the audio, video, and other related data (collectively called an "event") to the evaluation server **50**. The evaluation server maintains the captured events and provides them to the

6

analysis station **60** where the events are reviewed. The analysis station **60** may be configured with certain hardware and software modules that allow an operator to review and analyze event data (e.g., audio, video, and metadata), create summary reports and the like.

In one embodiment, the event detector **30** is configured to create metadata tags and assign them to a variety of points. A metadata tag correlates to a particular moment in time and can be linked to a corresponding portion of a video and/or audio buffer. For example, for a given event, one metadata tag can be assigned to the beginning of the event and another metadata tag can be assigned to the end of the event.

After an event is reviewed, it may be discarded, flagged for follow up, flagged for inclusion in one or more reports, or otherwise maintained for later reporting or analysis. In one embodiment, certain portions of one or more events may be incorporated into a report and then sent to the evaluation server **50** for storage.

In one embodiment, an event **150** is captured by an event detector **30** and stored until it is provided to the evaluation server **50**. The means by which an event **150** can be provided to the evaluation server **50** can vary. For example, an event **150** may be provided from event detector **30** to the evaluation server **50** by way of a portable media device, a direct wire link, a direct wireless link, an indirect wire link, an indirect wireless link, or any combination of these. Event **150** may be secured by encryption of the event-data structure and/or a secure channel between the event detector **30** and the evaluation server **50**.

For example, a portable media device may include a USB drive, compact disc, thumb drive, media card, or other similar type of device. A direct wire link may include a USB cable, a firewire cable, an RS-232 cable, or the like. A direct wireless link may include an infrared link, a Bluetooth link, or an IEEE 802.11 point-to-point link, just to name a few. An indirect wired link may include a packet switched or circuit switched network connection configured for conveyance of data traffic. An Ethernet network connection is an example of a packet switched indirect wired link and a dial-up modem connection is an example of a circuit switched indirect wired link; both of which may be configured for conveyance of data traffic.

In the illustrated embodiment, the event **150** travels from the event detector **30** to the evaluation server **50** over the network **76**. The network **76** may comprise any of a variety of network types and topologies and any combination of such types and topologies. For example, the network **76** may comprise a plurality of networks including private, public, circuit switched, packet switched, personal area networks ("PAN"), local area networks ("LAN"), wide area networks ("WAN"), metropolitan area networks ("MAN"), or any combination of these. The network **76** may also include that particular combination of networks universally known as the Internet.

In one embodiment, the event **150** travels to the wireless network **76** by way of an access point (not shown) and then on to the evaluation server **50** via the wireless network **76**. The access point may provide access via many different wireless network protocols as will be well understood by those having skill in the art. The wireless network may be a WWAN or a WiFi network.

The link between the event detector **30** and the access point may be a short range direct link or a wide range direct link. The access point may be a large radio tower device or a small in-home wireless appliance. The wireless network **76** may include over the air segments and also wired segments. For example, the last mile segments of wireless network may be over the air, while internal and back end segments may be wired segments. In one embodiment, the wireless network **76**

may provide a wireless interface to the event detector **30** and then have a wired interface on the back end to the Internet, which in turn connects to the evaluation server **50**.

In one embodiment, an event **150** may be provided from the event detector **30** to a docking station (not shown), then to the network **76**, and then to the evaluation server **50**. Providing the event **150** from the event detector **30** to the docking station can be accomplished via a variety of means as described above, including portable media, direct wired or wireless link, and indirect wired or wireless link. The event detector **30** may also be physically coupled with the docking station to convey the event **150** from the event detector **30** to the docking station. Once the event **150** is received by the docking station, the event **150** is sent over the network **76** to the evaluation server **50**.

The network **76** may be a wired or wireless or a combination of the two. The network **76** may also be private or public in whole or in part and may also include the Internet.

In one embodiment, the evaluation server **50** is configured to save the event data in a data buffer, create groups of events, and concatenate data from a number of data buffers.

In one embodiment, a group of events **152** traveling from the evaluation server **50** can be routed to the analysis station **60**. The means by which the group of events **152** can be provided to the analysis station **60** can vary. In various embodiments (or in a single embodiment), the group of events **152** can be provided by the evaluation server **50** to the analysis station **60** via the network **76**.

The group of events **152** may be identified, for example, by searching for all events that pertain to a particular driver. This may be accomplished by associating each event at the time it is captured with a particular driver. For example, the driver of a vehicle may have a unique identifier and that unique identifier may be included as part of the metadata for each event that is captured while that driver is operating the vehicle.

Groups of events **152** may also be identified by all events associated with a particular company, a particular shift, a particular supervisor, or other reporting structure or working structure combinations. Such a group of events **152**, once provided to the analysis station **60**, can then be analyzed by an operator who reviews each event and identifies those events that need to be reported or shown to the driver.

FIG. **4A** is a block diagram illustrating an example of the data structure of a driving event record **300** according to an embodiment of the present invention. In the illustrated embodiment, the driving event record **300** is created by an event detector **30** when the event detector receives a new event captured by one or more event capture devices which is identified as a potentially valid driving event. Valid events are those captured driving events that are essential to the testing of a driver's risky behavior. If the event is potentially a valid driving event, the event detector stores a substantial amount of information about the event in the driving event record **300**, and sends the driving event record to the evaluation server **50** for further review and data analysis. The driving event record **300** may comprise several types of information, including, but not limited to, time and GPS location data **740**, speed data **742**, trigger force range data **744**, video data **746**, audio data **748**, etc.

FIG. **4B** is a block diagram illustrating an example of the data structure of a non-event profile **310** according to an embodiment of the present invention. In the illustrated embodiment, the non-event profile **310** is created at the evaluation server **50** after an operator has identified a driving event as a non-event based on the contents of the driving event record, as described in more detail below in connection with FIGS. **7** and **9B**. The non-event profiles are stored on the

evaluation server and copies of non-event profiles are sent to the event detectors in the field. A typical non-event profile **310** contains less data than the driving event record **300**. The non-event profile should contain just enough information to identify the non-event if it recurs. For example, a non-event profile **710** can comprise a unique identifier **743** created by the evaluation server for that particular non-event, time and GPS location information **740**, speed information **742**, and trigger force range information **744**. In an alternative embodiment, time and/or speed information may be excluded from the non-event profile **710**. The unique identifier **743** is used by the event detector to identify and refer to the appropriate non-event profile. After the unique identifier is created for the non-event profile, the evaluation server also creates an occurrence counter. The occurrence counter is used to keep track of future occurrences of non-events having the same non-event profile, as will be described in more detail below.

FIG. **4C** is a block diagram illustrating an example of the data structure of an abbreviated record **320** according to an embodiment of the present invention. In the illustrated embodiment, the abbreviated records **320** are created by event detectors and sent to the evaluation server. If a captured event has a corresponding non-event profile, very little information about the event needs to be stored. In fact, the amount of information stored in the abbreviated record **320** can be even smaller than in the corresponding non-event profile **310**. A typical abbreviated record **320** may comprise a unique identifier **743**, time and GPS location information **740**, and trigger force range information **744**, although even less information than this may be required in other embodiments. The unique identifier assigned to the abbreviated record is the same as the unique identifier assigned to the corresponding non-event profile. The unique identifier **743** is used to identify and refer to the appropriate non-event profile.

FIG. **4D** is a block diagram illustrating an example of the data structure of an avoidance record **330** according to an embodiment of the present invention. In the illustrated embodiment, the avoidance record **330** is created at an evaluation server when the evaluation server receives an abbreviated record for a particular identified non-event a specified number of times. If an event has a corresponding non-event profile and it has been captured a specified number of times, the evaluation server determines that the event which has that non-event profile should be avoided by drivers in the future. To facilitate that, the avoidance record **330** is created.

The avoidance records **330** are stored on the evaluation server. The amount of information stored in the avoidance record **330** can be even smaller than in the corresponding abbreviated record **320**. A typical avoidance record **330** comprises a unique identifier **743**, GPS location information **741**, and trigger force range information **744**. The unique identifier **743** is used to identify and refer to the appropriate non-event profile.

Operation of the event detector and evaluation server in identifying and handling non-events will now be described in more detail with reference to FIGS. **6** to **9**. In the illustrated embodiment, captured events are provided to the event detector in response to detection of a trigger, which may be a force above a certain threshold, for example. Other triggers may be used to trigger transmission of captured events to the event detector in alternative embodiments. The event detector compares received events **150** to previously stored non-event profiles, creates a full driving event record **300** (FIG. **4A**) if the event data does not match any stored non-event profile, and creates an abbreviated record **320** (FIG. **4C**) if the event data matches a stored non-event profile. The evaluation server or analysis station receives driving event records and abbrevi-

ated records from the event detector, and determines whether the driving event records match the criteria for a valid driving event. If not, a new non-event profile **310** (FIG. 4B) is created and sent to all event detectors **30**. If the same identified non-event occurs more than a predetermined number of times, avoidance record **330** is created. The accumulated group of avoidance records **330** could optionally be sold to a third party.

FIG. 6A is a block diagram illustrating an example control module **130** residing in the event detector according to an embodiment of the present invention. In the illustrated embodiment, the control module **130** comprises an event record creating module **134**, a non-event profile module **136** and an abbreviated record module **138**. The non-event profile module **136** is configured to compare captured event data with previously stored non-event profiles. Non-event profiles are created by the evaluation server for those events that are irrelevant to the analysis of driving behavior and thus, require storing only a minimal amount information, and are stored by the event detectors for later comparison purposes. It will be understood that the evaluation server may alternatively be responsible for comparing captured event data with previously identified non-event profiles, and for creating abbreviated records **320** if appropriate.

Storage of unnecessary and/or redundant information may be expensive. But, even if the cost of data storage is not an issue, the processing of data containing both relevant and irrelevant information may be time consuming. To save data storage space and shorten data processing time, detailed information about the event is stored only if the event is a valid driving event. Driving events that are actually non-events require storing only a minimal amount of information. If a captured event may be a valid driving event, a full detailed event record is created, whereas for an identified non-event only some information about the event is saved.

In one embodiment, when the event detector receives captured event data, it identifies some information about the event, such as GPS location information of the vehicle at the time of the event, speed information, trigger signal information, and the like. The non-event profile module **136** then compares that information to the information saved in non-event profiles stored at data storage **35**. If the received event data matches information saved in any of the non-event profiles, the received event may be categorized as a non-event.

If the non-event profile module **136** determines that the received event matches a previously stored non-event profile, the abbreviated record module **138** creates an abbreviated record **320** (FIG. 4C) for that non-event and sends the abbreviated record to the evaluation server. But, if the non-event profile module **136** determines that the received event does not match any previously stored non-event profiles, and is therefore potentially a valid driving event, the event record creating module **134** creates a full driving event record **300** (FIG. 4A) for that event and sends it to the evaluation server.

FIG. 6B is a block diagram illustrating an example analysis module **260** at an evaluation server according to an embodiment of the present invention. In the illustrated embodiment, the analysis module **260** comprises a non-event identification module **264**, an abbreviated record module **266**, an avoidance record module **268** and a plot generating module **269**. The analysis module **260** is configured to identify non-events and to create a variety of records, including non-event profiles and avoidance records.

The main function of the non-event identification module **264** is to identify non-events and to create non-event profiles **310** for non-events. An event may be identified as a non-event if the event data are irrelevant to the analysis of driving

behavior. For example, an event may be a non-event if the event was related to the driving over a physical obstacle at a known location, such as driving over a pothole, a railroad crossing, etc., and the analysis does not focus on the driving over those obstacles. A non-event may be identified by checking if the event data contains a negative trigger force value along the "Z" axis. Such an event may represent a situation where the vehicle suddenly hit a pothole or ran over a railroad crossing.

In one embodiment, an operator identifies which events are non-events, flags those events as non-events and initiates the creating of non-event profiles with a unique identifier **743** associated with each non-event profile so that the later occurrence of the same set of data can be associated with the same unique identifier in a corresponding abbreviated record. The non-event identification module **264** creates non-event profiles for non-events, stores one copy of the non-event profiles in data storage **55** at the evaluation server and sends other copies of the non-event profiles to all event detectors in the system, or to those operating in an area which covers the location of the identified non-event.

An abbreviated record module **266** receives abbreviated records **320** for non events from event detectors, and maintains a non-event occurrence-counter associated with each non-event profile. Once the abbreviated record is received at the evaluation server, the abbreviated record module **266** advances a non-event occurrence-counter for the unique identifier associated with the abbreviated record, and determines whether that specific abbreviated record has been received at the evaluation server more than a predetermined number of times. If, so, the abbreviated record module **266** sends a signal to the avoidance record module **268**.

In one embodiment, the main function of the avoidance record module **268** is to create avoidance records **330** (FIG. 4D) for non-events. If a non-event was repeated certain number of times, the avoidance record module **268** creates an avoidance record **330** for that non-event and sends the avoidance record to event detectors.

The avoidance record module **268** can be invoked if a given non-event has been identified more than a predetermined number of times. An avoidance record is usually very short and contains a minimum amount of information about the non-event.

In one embodiment, the plot generating module **269** receives requests from an operator to produce data plots. After receiving the request, the plot generating module **269** analyzes the appropriate event records stored at the evaluation server and creates the requested plots using the data stored at the evaluation server. The plots may contain statistical information about valid-driving events, non-events, abbreviated records, avoidance records, etc. The plots may also represent a special relationship between non-events and a specified driving course or a specified location. Furthermore, the plots may represent statistical information about driving behavior of one driver or a group of drivers. A variety of other plots are also contemplated.

FIG. 6C is a block diagram illustrating an example evaluation server data storage **55** according to an embodiment of the present invention. In the illustrated embodiment, the data storage **55** comprises databases containing stored driving event records **300**, non-event profiles **310**, abbreviated records **320** and avoidance records **330**.

FIG. 7 is a block diagram illustrating an example event detector **30** and an example evaluation server **50** processing captured events according to an embodiment of the present invention.

In one embodiment, potentially valid driving event records **300** are sent from the event detector **30** to the non-event identification module **264** of the evaluation server **50** and then stored at data storage **55** if they are identified as valid events. The non-event identification module **264** can provide driving event records **300** received from event detectors in the field to an operator, who reviews the records and determines whether any of the records should be identified as a non-event. As described above in connection with FIG. 6A, non-events are driving events that are irrelevant to the testing of driving behaviors. Such circumstances may include driving through physical obstacles at known locations such as potholes, railroad crossings, and the like, if driving over those obstacles is irrelevant to the testing.

If the non-event identification module determines that the received event record corresponds to a valid driving event requiring further study, the record is sent to the driving event records section of the data storage module **55**. If the event is identified as a non-event, the operator initiates the creating of a non-event profile **310** for the non-event. A non-event profile **310** contains a smaller amount of information than the driving event record **300**, as described above, but it contains just enough information to identify the non-event and flag a recurrence of the non-event in the future. One of the fields in a non-event profile **310** comprises a unique identifier which can be used by the evaluation server **50** to keep track of similar non-events captured in the future. The non-event profiles **310** are stored in the non-event profile section of the data storage module **55** at the evaluation server **50**. Copies of non-event profiles **310** are also sent to event detectors and stored in the data storage modules **35** of event detectors in the field.

The event detectors **30** access non-event profiles in their data storage modules **35** to determine whether a newly captured event is a non-event. When the event detector **30** receives a new event, it passes the new event data to its non-event profile module **136**. The non-event profile module **136** compares the new event data (including GPS location information, speed information, trigger signal information, and the like) to the stored non-event profiles **310** to determine if the detected event matches a previously stored non-event profile. If the parameters in the new event data match the parameters in any of the previously stored non-event profiles, the non-event profile module **136** determines that the event is a non-event and thus, needs only an abbreviated record **320**. But, if the non-event profile module **136** does not find a "match" among the non-event profiles **310**, the event is potentially a valid driving event and a full driving event record **300** is created by module **134** and sent to the evaluation server at the appropriate time.

In one embodiment, the abbreviated record module **138** creates abbreviated records **320** for non-events. The abbreviated records **320** are created to save system storage space and thus, improve efficiency of the review process. An abbreviated record **320** contains a smaller amount of information than the corresponding driving event record **300**, and also contains the same unique identifier **743** as the non-event profile **310** matching the new driving event as identified by the non event profile matching module **136**. Once an abbreviated record **320** for the non-event is created, the event detector **30** sends the abbreviated record **320** to the evaluation server **50**. In the illustrated embodiment, abbreviated records are stored by the evaluation server **50** in the corresponding section of the data storage module **55**, and are also monitored by the abbreviated record module **266**.

In one embodiment, the abbreviated record module **266** residing in the evaluation server **50** monitors the receiving of each abbreviated record **320**. The abbreviated record module

266 counts how many times the same non-event has occurred, i.e. it counts the number of times an abbreviated record with the same unique identifier **743** is received. If the non-event recurs a specified number of times, the analysis module **260** invokes the avoidance record module **268**. The avoidance record module **268** creates an avoidance record **330** for that non-event, which is stored in the corresponding area of data storage module **55**.

In one embodiment, the plot generating module **269** generates a variety of plots based on the collected driving event data. The plots may contain statistical information about valid driving events, non-events, abbreviated records, avoidance records, and the like. The plots may also represent a special relationship between non-events and a specified driving course or a specified location. Furthermore, the plots may represent statistical information about driving behavior of one driver or a group of drivers. A variety of other plots are also contemplated.

FIG. 8 is a flow diagram illustrating an example process for the identification and processing of captured events by an event detector according to an embodiment of the present invention. In the illustrated embodiment, the event detector receives an event from one or more event capture devices, determines whether the captured event is potentially a valid-driving event or matches a previously stored non-event profile, and creates appropriate data records.

At a step **800**, the event detector receives new event data from an event capture device (or more than one such device). As described above in connection with FIG. 3, event capture devices may comprise audio, video and/or metadata sensing devices. Once the event detector receives an event trigger, the event detector selects one or more event capture devices, and passes the trigger to selected event capture devices. In response, each selected event capture device sends captured event data to the event detector.

At a step **802**, the event detector compares the event data received from the event capture devices (e.g., GPS location information, speed information, trigger signal information, etc.) to the previously stored non-event profiles to determine whether the received event is a non-event.

At a step **804**, the event detector checks if the received event corresponds to a previously stored non-event profile. If it does, then the event detector stores only a minimal amount of information for the event, along with the unique identifier **743** of the corresponding non-event profile **310**. But, if the received event does not correspond to the data in any previously stored non-event profile, the event is identified as a potentially valid driving event and thus, the event detector stores a full driving event record **300** (FIG. 4A) for the event (step **812**).

At a step **808**, the event detector creates and stores an abbreviated record for any received event corresponding to a non-event profile. Since the received event is a non-event (i.e., the event is not a valid-driving event), there is no need to store full driving event data for it. Thus a shorter, abbreviated record is sufficient for the received non-event. As described above in connection with FIG. 4C, a typical abbreviated record comprises a unique identifier **743** which is the same as the unique identifier of the non-event profile identified as matching that event, time and GPS location information **740**, and trigger force range information **744**. The unique identifier is used to identify and refer to future occurrences of the same non-event.

At a step **810**, the event detector sends the abbreviated record to the evaluation server where the abbreviated record is stored and used in further data processing.

13

At the step **812**, the event detector creates a full driving event record **300** for a received event which does not have data matching a previously stored non event profile **310**. As described above in connection with FIG. 4A, a typical driving event record **300** comprises detailed information about the event, including time and GPS location data, speed data, trigger force range data, video data, audio data, etc.

At a step **814**, the event detector sends the full driving record **300** to the evaluation server where the driving record is stored and used in further data processing.

FIG. 9A is a flow diagram illustrating an example process for the identification and processing of abbreviated records by an evaluation server according to an embodiment of the present invention. In the illustrated embodiment, the evaluation server receives abbreviated records for non-events and creates additional data records for the non-event if it is needed.

At a step **902**, the evaluation server receives an abbreviated record from the event detector. As described above in connection with FIG. 8, the event detector creates abbreviated records for those driving events that correspond to previously identified non-events. Each abbreviated record has a unique identifier which corresponds to the unique identifier included with the non-event profile for the non-event.

At a step **904**, the evaluation server retrieves from its database an occurrence-counter that has the same unique identifier as the unique identifier included in the abbreviated record. The evaluation server maintains an occurrence-counter for each non-event profile. An occurrence-counter is used to keep track of the number of occurrences of non-events that have the same non-event profile. Each time the non-event having a corresponding non-event profile is captured, the occurrence-counter is advanced until it reaches a predefined maximum number of occurrences for the non-event.

At a step **906**, the evaluation server advances the occurrence-counter for the abbreviated record having the same unique identifier as the occurrence-counter.

At a step **908**, the evaluation server checks whether the evaluation server has received more than "N" abbreviated records for a given non-event having the same unique identifier **743**. If not, the abbreviated record is stored (step **912**). If the non-event occurrence-counter has received more than N occurrences for the same unique non event identifier, the evaluation server determines that this non-event has to be "avoided" in the future.

At a step **910**, the evaluation server has determined that there have been more than "N" abbreviated records for a given non-event. At the step **910**, the evaluation server creates and stores an avoidance record **930** containing minimum information about the non-event.

As described above in connection with FIG. 4D, a typical avoidance record **930** comprises the unique identifier for that non-event, GPS location information, and trigger force range information. The unique identifier assigned to the avoidance record is the same as the unique identifier assigned to the abbreviated record and the corresponding non-event profile. At step **912**, the evaluation server stores the received abbreviated record.

In one embodiment, the evaluation server checks periodically to determine whether an operator has sent information that the non-event had expired (not shown in FIG. 9A). A non-event expires, for example, when the pothole is repaired, the obstacle on the road is removed, a specified amount of time has passed since a non-event profile was created for the non-event involving given obstacle, or the like. The information about an expired non-event can be entered by an operator who works at the evaluation server. Alternatively, the evaluation

14

server can periodically check the time-stamp information saved in the non-event profiles. Event detectors **30** may also be instructed to remove the corresponding non-event profile from their records.

If a non-event has expired, collecting further information about the non-event is unnecessary. Thus, in that situation, the evaluation server can remove the appropriate non-event profile, appropriate abbreviated records and all other records related to the expired non-event.

In one embodiment, the evaluation server checks periodically whether an operator had requested plotting of data (not shown in FIG. 9A). An operator can send a request during the driving experiment ("on-line processing") or during data analysis ("off-line post-processing"). As described above in connection with FIG. 6B, the evaluation server in one embodiment includes a plot generating module. The plot generating module analyzes the records stored on the evaluation server and, using that data, creates plots requested by an operator. The plots may contain statistical information about the number of valid-driving events, non-events, abbreviated records for given non-events, number of avoidance records, etc. In addition, the plots may represent a special relationship between non-events identified during a specified driving course or location. The plots may also represent statistical information about driving behavior of one driver, or a group of drivers.

FIG. 9B is a flow diagram illustrating an example process for the identification and processing of driving event records by an evaluation server according to an embodiment of the present invention. In the illustrated embodiment, the evaluation server receives driving event records for potentially valid driving events and creates additional data records for the event if it is needed.

At a step **920**, the evaluation server receives a full driving event record from the event detector. As described above in connection with FIG. 8, the event detector creates full driving records for those driving events that are potentially valid driving events (i.e., that are not identical to previously identified non-events). The evaluation server receives the full driving records from the event detector after the event detector receives the data from the selected event capture device or devices.

At a step **922**, the evaluation server determines whether the data corresponds to a valid driving event or may be an actual non-event. As described above in connection with FIG. 8, non-events are driving events that are connected to events that are irrelevant to the testing of driving behaviors. Examples of such irrelevant events include driving over physical obstacles at known driving locations, such as driving over potholes, railroad crossings, and the like. Such irrelevant events do not require storing full driving event records. For such irrelevant events only a minimal amount of information needs to be stored. The operator determines whether the event is a non-event by examining the data associated with the event. If the event is a valid driving event, the driving event record is stored (step **928**) and may be used in subsequent analysis of driver behavior.

If the evaluation server determines that the event was actually a non-event, a non-event profile is created (step **924**) and the non-event profile is sent to event detectors in the field (step **926**).

In the embodiment described above, non-events are initially identified by examining event data during operator review at the evaluation server and a non-event profile is created for each non-event and provided to the event detectors for future use. The event detector may identify an event corresponding to a non-event profile by comparison of the GPS

15

information, trigger force, and the like, and create a corresponding abbreviated event record for use in counting the number of times that particular event has occurred. Recurring events may be flagged through cumulative identification, for example by using the occurrence counter as described above. Information on such recurring non-events can be provided to government entities and the like to locate and identify necessary road repairs.

FIG. 10 is a block diagram illustrating an exemplary wireless communication device 650 that may be used in connection with the various embodiments described herein. For example, the wireless communication device 650 may be used in conjunction with an event detector or an evaluation server previously described with respect to FIG. 5. However, other wireless communication devices and/or architectures may also be used, as will be clear to those skilled in the art.

In the illustrated embodiment, wireless communication device 650 comprises an antenna 652, a multiplexor 654, a low noise amplifier ("LNA") 656, a power amplifier ("PA") 658, a modulation circuit 660, a baseband processor 662, a speaker 664, a microphone 666, a central processing unit ("CPU") 668, a data storage area 670, and a hardware interface 672. In the wireless communication device 650, radio frequency ("RF") signals are transmitted and received by antenna 652. Multiplexor 654 acts as a switch, coupling antenna 652 between the transmit and receive signal paths. In the receive path, received RF signals are coupled from a multiplexor 654 to LNA 656. LNA 656 amplifies the received RF signal and couples the amplified signal to a demodulation portion of the modulation circuit 660.

Typically, modulation circuit 660 will combine a demodulator and modulator in one integrated circuit ("IC"). The demodulator and modulator can also be separate components. The demodulator strips away the RF carrier signal, leaving a base-band receive audio signal, which is sent from the demodulator output to the base-band processor 662.

If the base-band receive audio signal contains audio information, then base-band processor 662 decodes the signal and converts it to an analog signal. Then the signal is amplified and sent to the speaker 664. The base-band processor 662 also receives analog audio signals from the microphone 666. These analog audio signals are converted to digital signals and encoded by the base-band processor 662. The base-band processor 662 also codes the digital signals for transmission and generates a base-band transmit audio signal that is routed to the modulator portion of modulation circuit 660. The modulator mixes the base-band transmit audio signal with an RF carrier signal, generating an RF transmit signal that is routed to the power amplifier 658. The power amplifier 658 amplifies the RF transmit signal and routes it to the multiplexor 654 where the signal is switched to the antenna port for transmission by antenna 652.

The baseband processor 662 is also communicatively coupled with the central processing unit 668. The central processing unit 668 has access to a data storage area 670. The central processing unit 668 is preferably configured to execute instructions (i.e., computer programs or software) that can be stored in the data storage area 670. Computer programs can also be received from the baseband processor 662 and stored in the data storage area 670 or executed upon receipt. Such computer programs, when executed, enable the wireless communication device 650 to perform the various functions of the present invention as previously described.

In this description, the term "computer readable medium" is used to refer to any media used to provide executable instructions (e.g., software and computer programs) to the wireless communication device 650 for execution by the cen-

16

tral processing unit 668. Examples of these media include the data storage area 670, microphone 666 (via the baseband processor 662), antenna 652 (also via the baseband processor 662), and hardware interface 672. These computer readable mediums are means for providing executable code, programming instructions, and software to the wireless communication device 650. The executable code, programming instructions and software, when executed by the central processing unit 668, preferably cause the central processing unit 668 to perform the inventive features and functions previously described herein.

The central processing unit is also preferably configured to receive notifications from the hardware interface 672 when new devices are detected by the hardware interface. Hardware interface 672 can be a combination electromechanical detector with controlling software that communicates with the CPU 668 and interacts with new devices.

FIG. 11 is a block diagram illustrating an exemplary computer system 750 that may be used in connection with the various embodiments described herein. For example, the computer system 750 may be used in conjunction with an event detector or an evaluation server previously described with respect to FIG. 5. However, other computer systems and/or architectures may be used, as will be clear to those skilled in the art.

The computer system 750 preferably includes one or more processors, such as processor 752. Additional processors may be provided, such as an auxiliary processor to manage input/output, an auxiliary processor to perform floating point mathematical operations, a special-purpose microprocessor having an architecture suitable for fast execution of signal processing algorithms (e.g., digital signal processor), a slave processor subordinate to the main processing system (e.g., back-end processor), an additional microprocessor or controller for dual or multiple processor systems, or a coprocessor. Such auxiliary processors may be discrete processors or may be integrated with the processor 752.

The processor 752 is preferably connected to a communication bus 754. The communication bus 754 may include a data channel for facilitating information transfer between storage and other peripheral components of the computer system 750. The communication bus 754 further may provide a set of signals used for communication with the processor 752, including a data bus, address bus, and control bus (not shown). The communication bus 754 may comprise any standard or non-standard bus architecture such as, for example, bus architectures compliant with industry standard architecture ("ISA"), extended industry standard architecture ("EISA"), Micro Channel Architecture ("MCA"), peripheral component interconnect ("PCI") local bus, or standards promulgated by the Institute of Electrical and Electronics Engineers ("IEEE") including IEEE 488 general-purpose interface bus ("GPIB"), IEEE 696/S-100, and the like.

Computer system 750 preferably includes a main memory 756 and may also include a secondary memory 758. The main memory 756 provides storage of instructions and data for programs executing on the processor 752. The main memory 756 is typically semiconductor-based memory such as dynamic random access memory ("DRAM") and/or static random access memory ("SRAM"). Other semiconductor-based memory types include, for example, synchronous dynamic random access memory ("SDRAM"), Rambus dynamic random access memory ("RDRAM"), ferroelectric random access memory ("FRAM") and the like, including read only memory ("ROM").

The secondary memory 758 may optionally include a hard disk drive 760 and/or a removable storage drive 762, for

example, a floppy disk drive, a magnetic tape drive, a compact disc ("CD") drive, a digital versatile disc ("DVD") drive, etc. The removable storage drive **762** reads from and/or writes to a removable storage medium **764** in a well-known manner. Removable storage medium **764** may be, for example, a floppy disk, magnetic tape, CD, DVD, etc.

The removable storage medium **764** is preferably a computer readable medium having stored thereon computer executable code (i.e., software) and/or data. The computer software or data stored on the removable storage medium **764** is read into the computer system **750** as electrical communication signals **778**.

In alternative embodiments, secondary memory **758** may include other similar means for allowing computer programs or other data or instructions to be loaded into the computer system **750**. Such means may include, for example, an external storage medium **772** and an interface **770**. Examples of external storage medium **772** may include an external hard disk drive or an external optical drive and/or external magneto-optical drive.

Other examples of secondary memory **758** may include semiconductor-based memory such as programmable read-only memory ("PROM"), erasable programmable read-only memory ("EPROM"), electrically erasable read-only memory ("EEPROM"), or flash memory (block oriented memory similar to EEPROM). Also included are any other removable storage units **772** and interfaces **770**, which allow software and data to be transferred from the removable storage unit **772** to the computer system **750**.

Computer system **750** may also include a communication interface **774**. The communication interface **774** allows software and data to be transferred between computer system **750** and external devices (e.g., printers), networks, or information sources. For example, computer software or executable code may be transferred to computer system **750** from a network server via communication interface **774**. Examples of communication interface **774** include a modem, a network interface card ("NIC"), a communications port, a PCMCIA slot and card, an infrared interface, and an IEEE 1394 fire-wire, just to name a few.

Communication interface **774** preferably implements industry promulgated protocol standards, such as Ethernet IEEE 802 standards, Fiber Channel, digital subscriber line ("DSL"), asynchronous digital subscriber line ("ADSL"), frame relay, asynchronous transfer mode ("ATM"), integrated digital services network ("ISDN"), personal communications services ("PCS"), transmission control protocol/Internet protocol ("TCP/IP"), serial line Internet protocol/point to point protocol ("SLIP/PPP"), and so on, but may also implement customized or non-standard interface protocols as well.

Software and data transferred via communication interface **774** are generally in the form of electrical communication signals **778**. These signals **778** are preferably provided to communication interface **774** via a communication channel **776**. Communication channel **776** carries signals **778** and can be implemented using a variety of wired or wireless communication means including wire or cable, fiber optics, conventional phone line, cellular phone link, wireless data communication link, radio frequency (RF) link, or infrared link, just to name a few.

Computer executable code (i.e., computer programs or software) is stored in the main memory **756** and/or the secondary memory **758**. Computer programs can also be received via communication interface **774** and stored in the main memory **756** and/or the secondary memory **758**. Such computer programs, when executed, enable the computer

system **750** to perform the various functions of the present invention as previously described.

In this description, the term "computer readable medium" is used to refer to any media used to provide computer executable code (e.g., software and computer programs) to the computer system **750**. Examples of these media include main memory **756**, secondary memory **758** (including hard disk drive **760**, removable storage medium **764**, and external storage medium **772**), and any peripheral device communicatively coupled with communication interface **774** (including a network information server or other network device). These computer readable mediums are means for providing executable code, programming instructions, and software to the computer system **750**.

In an embodiment that is implemented using software, the software may be stored on a computer readable medium and loaded into computer system **750** by way of removable storage drive **762**, interface **770**, or communication interface **774**. In such an embodiment, the software is loaded into the computer system **750** in the form of electrical communication signals **778**. The software, when executed by the processor **752**, preferably causes the processor **752** to perform the inventive features and functions previously described herein.

Various embodiments may also be implemented primarily in hardware using, for example, components such as application specific integrated circuits ("ASICs"), or field programmable gate arrays ("FPGAs"). Implementation of a hardware state machine capable of performing the functions described herein will also be apparent to those skilled in the relevant art. Various embodiments may also be implemented using a combination of both hardware and software.

Furthermore, those of skill in the art will appreciate that the various illustrative logical blocks, modules, circuits, and method steps described in connection with the above described figures and the embodiments disclosed herein can often be implemented as electronic hardware, computer software, or combinations of both. To clearly illustrate this interchangeability of hardware and software, various illustrative components, blocks, modules, circuits, and steps have been described above generally in terms of their functionality. Whether such functionality is implemented as hardware or software depends upon the particular application and design constraints imposed on the overall system. Skilled persons can implement the described functionality in varying ways for each particular application, but such implementation decisions should not be interpreted as causing a departure from the scope of the invention. In addition, the grouping of functions within a module, block, circuit or step is for ease of description. Specific functions or steps can be moved from one module, block or circuit to another without departing from the invention.

Moreover, the various illustrative logical blocks, modules, and methods described in connection with the embodiments disclosed herein can be implemented or performed with a general purpose processor, a digital signal processor ("DSP"), an ASIC, FPGA or other programmable logic device, discrete gate or transistor logic, discrete hardware components, or any combination thereof designed to perform the functions described herein. A general-purpose processor can be a microprocessor, but in the alternative, the processor can be any processor, controller, microcontroller, or state machine. A processor can also be implemented as a combination of computing devices, for example, a combination of a DSP and a microprocessor, a plurality of microprocessors, one or more microprocessors in conjunction with a DSP core, or any other such configuration.

19

Additionally, the steps of a method or algorithm described in connection with the embodiments disclosed herein can be embodied directly in hardware, in a software module executed by a processor, or in a combination of the two. A software module can reside in RAM memory, flash memory, ROM memory, EPROM memory, EEPROM memory, registers, hard disk, a removable disk, a CD-ROM, or any other form of storage medium including a network storage medium. An exemplary storage medium can be coupled to the processor such that the processor can read information from, and write information to, the storage medium. In the alternative, the storage medium can be integral to the processor. The processor and the storage medium can also reside in an ASIC.

The above description of the disclosed embodiments is provided to enable any person skilled in the art to make or use the invention. Various modifications to these embodiments will be readily apparent to those skilled in the art, and the generic principles described herein can be applied to other embodiments without departing from the spirit or scope of the invention. Thus, it is to be understood that the description and drawings presented herein represent a presently preferred embodiment of the invention and are, therefore, representative of the subject matter which is broadly contemplated by the present invention. It is further understood that the scope of the present invention fully encompasses other embodiments that may become obvious to those skilled in the art and that the scope of the present invention is accordingly limited by nothing other than the appended claims.

The invention claimed is:

1. A system for identifying non-event profiles, comprising:
 - an event detector communicatively coupled with a vehicle, configured to capture driving events, store captured driving event data and receive non-event profiles;
 - at least one event capture device associated with the event detector for capturing the driving events;
 - a non-event profile module configured to compare non-event profiles with captured driving event data and to determine when a captured driving event is a non-event corresponding to a non-event profile based on the comparison of said captured driving event data to the non-event profiles; and
 - an event record creating module for creating a driving event record for each captured driving event not identified as a non-event by the non-event profile module.
2. The system of claim 1, further comprising an abbreviated record module configured to create an abbreviated record for captured driving event data identified as a non-event.
3. The system of claim 1, further comprising an evaluation server configured to receive driving event records from the event detector and to identify when a driving event record corresponds to a non-event.
4. The system of claim 3, wherein the evaluation server is further configured to create a non-event profile in response to identification of a non-event, and to send non-event profiles to the event detector.
5. The system of claim 3, wherein the evaluation server identifies the driving event as a non-event when the driving event record indicates a predetermined vertical axis force is in a trigger force range.
6. The system of claim 3, wherein the evaluation server further comprises an abbreviated record module configured to receive abbreviated records from the event detector and to count the number of times an abbreviated record corresponding to each non-event profile is received.
7. The system of claim 6, wherein the evaluation server further comprises an avoidance record module configured to create an avoidance record for a non-event when the number

20

of abbreviated records corresponding to the non-event profile for the identified non-event exceeds a predetermined value.

8. The system of claim 7, wherein the avoidance record comprises at least location information.

9. The system of claim 7, wherein the evaluation server further comprises a plot generating module configured to generate frequency and location plots to indicate driving locations to be avoided, the plots being based on the driving event records, the non-event profiles, the avoidance records and the abbreviated records.

10. The system of claim 7, wherein the evaluation server is further configured to remove the non-event profile, the abbreviated records and the avoidance record for the non-event when the non-event has expired.

11. The system of claim 1, wherein the event capture device comprises a global positioning system unit.

12. The system of claim 1, wherein the event capture device comprises a g-force sensing system for sensing g-forces along perpendicular x, y and z axes, wherein a g-force trigger measured along a vertical axis is a negative trigger.

13. The system of claim 12, wherein the evaluation server is configured to identify a driving event as a non-event if the driving event data includes a negative trigger.

14. The system of claim 1, comprising a plurality of said event capture devices associated with the event detector, the event capture devices comprising at least a timer for capturing event time information, a location sensing unit for capturing location information, a speed detecting unit for capturing speed information, and a video camera for capturing video data.

15. The system of claim 14, wherein the event capture devices further comprise a g-force sensing system for capturing three axis g-force information.

16. A method for identifying non-event profiles, comprising:

- capturing driving event data at an event detector;
- determining whether captured driving event data corresponds to a non-event, by evaluating the driving event data and determining that there was no driver fault associated with the event to which said captured driving event data is related;
- creating a driving event record for any captured driving event data which is not determined to correspond to a non-event;
- creating an abbreviated record for any captured driving event data which is determined to be a non-event; and
- sending driving event records and abbreviated records from the event detector to an evaluation server.

17. The method of claim 16, wherein creating an abbreviated record for the non-event comprises saving at least location information and information identifying the range of trigger force equating to the non-event.

18. The method of claim 16, wherein creating a driving event record comprises saving at least event time information, speed information, location information, range of trigger force information, and video data for the driving event and storing the information in the driving event record.

19. The method of claim 16, further comprising creating and storing a non-event profile for any detected non-event, wherein the non-event profile comprises at least a unique identifier, location information and range of trigger force information.

20. The method of claim 19, wherein the step of determining whether captured driving event data corresponds to a non-event comprises comparing the captured driving event

21

data to stored non-event profiles and determining whether the captured driving event data corresponds to any stored non-event profile.

21. The method of claim **16**, further comprising evaluating driving event records received at the evaluation server and determining if a driving event record is a non-event, creating a non-event profile at the evaluation server for any non-event identified in said driving event records, sending each non-event profile to the event detector, and storing non-event profiles at the event detector, and the step of determining whether captured driving event data corresponds to a non-event comprises determining whether the captured driving event data corresponds to any stored non-event profile.

22. The method of claim **21**, wherein determining that driving event data corresponds to a non-event comprises determining whether a trigger force stored in the driving event record corresponds to a vertical trigger force exceeding a predetermined value.

23. The method of claim **21**, further comprising associating each abbreviated record with a unique identifier for the cor-

22

responding non-event profile, and counting the number of abbreviated records received for each unique identifier.

24. The method of claim **23**, further comprising creating an avoidance record for a non-event when the abbreviated record count for the unique identifier associated with the non-event exceeds a predetermined number, wherein the avoidance record comprises location information and trigger force range information.

25. The method of claim **24**, further comprising identifying a non-event that has expired; and removing a non-event profile, an avoidance record and abbreviated records for the expired non-event.

26. The method of claim **24**, further comprising generating frequency and location plots from the non-event profiles, the avoidance records and the abbreviated records, wherein the frequency and location plots indicate driving locations to be avoided.

27. The method of claim **24**, further comprising selling at least the avoidance records to a third party.

* * * * *