



US008737259B2

(12) **United States Patent**
Sicurello et al.

(10) **Patent No.:** **US 8,737,259 B2**
(45) **Date of Patent:** ***May 27, 2014**

(54) **CLOSE PROXIMITY COMMUNICATION
DEVICE AND METHODS**

(56) **References Cited**

U.S. PATENT DOCUMENTS

- (71) Applicant: **Abbott Diabetes Care Inc.**, Alameda,
CA (US)
- (72) Inventors: **Jeffery Mario Sicurello**, Union City,
CA (US); **Mark Kent Sloan**, Redwood
City, CA (US)
- (73) Assignee: **Abbott Diabetes Care Inc.**, Alameda,
CA (US)

3,581,062	A	5/1971	Aston
3,926,760	A	12/1975	Allen et al.
3,949,388	A	4/1976	Fuller
4,036,749	A	7/1977	Anderson
4,055,175	A	10/1977	Clemens et al.
4,129,128	A	12/1978	McFarlane
4,245,634	A	1/1981	Albisser et al.
4,327,725	A	5/1982	Cortese et al.
4,344,438	A	8/1982	Schultz
4,349,728	A	9/1982	Phillips et al.
4,373,527	A	2/1983	Fischell

(Continued)

- (*) Notice: Subject to any disclaimer, the term of this
patent is extended or adjusted under 35
U.S.C. 154(b) by 0 days.

This patent is subject to a terminal dis-
claimer.

FOREIGN PATENT DOCUMENTS

CA	2143172	7/2005
CA	2605530	11/2006

(Continued)

- (21) Appl. No.: **13/959,287**

- (22) Filed: **Aug. 5, 2013**

- (65) **Prior Publication Data**

US 2013/0314247 A1 Nov. 28, 2013

Related U.S. Application Data

- (63) Continuation of application No. 12/917,455, filed on
Nov. 1, 2010, now Pat. No. 8,509,107, which is a
continuation of application No. 12/130,995, filed on
May 30, 2008, now Pat. No. 7,826,382.

Primary Examiner — Chi Pham

Assistant Examiner — Shick Hom

(74) *Attorney, Agent, or Firm* — Jackson & Co., LLP

(Continued)

- (51) **Int. Cl.**
H04L 12/00 (2006.01)

- (52) **U.S. Cl.**
USPC **370/252**; 370/259; 370/310; 340/539.13;
340/572.1; 455/404.2

- (58) **Field of Classification Search**

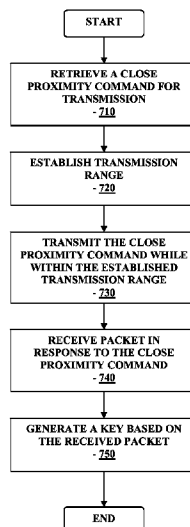
None

See application file for complete search history.

(57) **ABSTRACT**

Disclosed herein are methods and systems for receiving an
encoded data packet, one or more activation commands, and
a communication identifier, decoding the received data
packet, validating the decoded received data packet, and
executing one or more routines associated with the respective
one or more activation commands.

15 Claims, 13 Drawing Sheets



(56)

References Cited

U.S. PATENT DOCUMENTS

4,392,849 A	7/1983	Petre et al.	5,514,718 A	5/1996	Lewis et al.
4,425,920 A	1/1984	Bourland et al.	5,531,878 A	7/1996	Vadgama et al.
4,475,901 A	10/1984	Kraegen et al.	5,532,686 A	7/1996	Urbas et al.
4,478,976 A	10/1984	Goertz et al.	5,544,196 A	8/1996	Tiedmann, Jr. et al.
4,494,950 A	1/1985	Fischell	5,568,806 A	10/1996	Cheney, II et al.
4,509,531 A	4/1985	Ward	5,569,186 A	10/1996	Lord et al.
4,527,240 A	7/1985	Kvitash	5,581,206 A	12/1996	Chevallier et al.
4,538,616 A	9/1985	Rogoff	5,582,184 A	12/1996	Erickson et al.
4,619,793 A	10/1986	Lee	5,586,553 A	12/1996	Halili et al.
4,671,288 A	6/1987	Gough	5,593,852 A	1/1997	Heller et al.
4,703,324 A	10/1987	White	5,600,301 A	2/1997	Robinson, III
4,703,756 A	11/1987	Gough et al.	5,609,575 A	3/1997	Larson et al.
4,731,726 A	3/1988	Allen, III	5,628,310 A	5/1997	Rao et al.
4,749,985 A	6/1988	Corsberg	5,634,468 A	6/1997	Platt et al.
4,757,022 A	7/1988	Shults et al.	5,653,239 A	8/1997	Pompei et al.
4,777,953 A	10/1988	Ash et al.	5,659,454 A	8/1997	Vermesse
4,779,618 A	10/1988	Mund et al.	5,665,222 A	9/1997	Heller et al.
4,847,785 A	7/1989	Stephens	5,707,502 A	1/1998	McCaffrey et al.
4,854,322 A	8/1989	Ash et al.	5,711,001 A	1/1998	Bussan et al.
4,871,351 A	10/1989	Feingold	5,711,861 A	1/1998	Ward et al.
4,890,620 A	1/1990	Gough	5,724,030 A	3/1998	Urbas et al.
4,925,268 A	5/1990	Iyer et al.	5,726,646 A	3/1998	Bane et al. 340/870.03
4,953,552 A	9/1990	DeMarzo	5,733,259 A	3/1998	Valcke et al.
4,986,271 A	1/1991	Wilkins	5,748,103 A	5/1998	Flach et al.
4,995,402 A	2/1991	Smith et al.	5,749,907 A	5/1998	Mann
5,000,180 A	3/1991	Kuypers et al.	5,758,290 A	5/1998	Nealon et al.
5,002,054 A	3/1991	Ash et al.	5,772,586 A	6/1998	Heinonen et al.
5,019,974 A	5/1991	Beckers	5,791,344 A	8/1998	Schulman et al.
5,050,612 A	9/1991	Matsumura	5,804,047 A	9/1998	Karube et al.
5,051,688 A	9/1991	Murase et al.	5,833,603 A	11/1998	Kovacs et al.
5,055,171 A	10/1991	Peck	5,891,049 A	4/1999	Cyrus et al.
5,068,536 A	11/1991	Rosenthal	5,899,855 A	5/1999	Brown
5,082,550 A	1/1992	Rishpon et al.	5,925,021 A	7/1999	Castellano et al.
5,106,365 A	4/1992	Hernandez	5,935,099 A	8/1999	Petterson
5,122,925 A	6/1992	Inpyn	5,935,224 A	8/1999	Svancarek et al.
5,135,004 A	8/1992	Adams et al.	5,942,979 A	8/1999	Luppino
5,165,407 A	11/1992	Wilson et al.	5,951,485 A	9/1999	Cyrus et al.
5,231,988 A	8/1993	Wernicke et al.	5,957,854 A	9/1999	Besson et al.
5,245,314 A	9/1993	Kah et al.	5,964,993 A	10/1999	Blubaugh, Jr. et al.
5,246,867 A	9/1993	Lakowicz et al.	5,965,380 A	10/1999	Heller et al.
5,262,035 A	11/1993	Gregg et al.	5,971,922 A	10/1999	Arita et al.
5,262,305 A	11/1993	Heller et al.	5,995,860 A	11/1999	Sun et al.
5,264,104 A	11/1993	Gregg et al.	6,001,067 A	12/1999	Shults et al.
5,264,105 A	11/1993	Gregg et al.	6,024,699 A	2/2000	Surwit et al.
5,279,294 A	1/1994	Anderson et al.	6,049,727 A	4/2000	Crothall
5,285,792 A	2/1994	Sjoquist et al.	6,052,565 A	4/2000	Ishikura et al.
5,289,497 A	2/1994	Jackobson et al.	6,066,243 A	5/2000	Anderson et al.
5,293,877 A	3/1994	O'Hara et al.	6,083,710 A	7/2000	Heller et al.
5,299,571 A	4/1994	Mastrototaro	6,088,608 A	7/2000	Schulman et al.
5,320,725 A	6/1994	Gregg et al.	6,091,976 A	7/2000	Pfeiffer et al.
5,322,063 A	6/1994	Allen et al.	6,091,987 A	7/2000	Thompson
5,330,634 A	7/1994	Wong et al.	6,093,172 A	7/2000	Funderburk et al.
5,340,722 A	8/1994	Wolfbeis et al.	6,103,033 A	8/2000	Say et al.
5,342,789 A	8/1994	Chick et al.	6,117,290 A	9/2000	Say et al.
5,356,786 A	10/1994	Heller et al.	6,119,028 A	9/2000	Schulman et al.
5,360,404 A	11/1994	Novacek et al.	6,120,676 A	9/2000	Heller et al.
5,372,427 A	12/1994	Padovani et al.	6,121,009 A	9/2000	Heller et al.
5,379,238 A	1/1995	Stark	6,121,611 A	9/2000	Lindsay et al.
5,384,547 A	1/1995	Lynk et al.	6,122,351 A	9/2000	Schlueter, Jr. et al.
5,390,671 A	2/1995	Lord et al.	6,130,623 A	10/2000	MacLellan et al.
5,391,250 A	2/1995	Cheney, II et al.	6,134,461 A	10/2000	Say et al.
5,400,794 A	3/1995	Gorman	6,144,871 A	11/2000	Saito et al.
5,408,999 A	4/1995	Singh et al.	6,162,611 A	12/2000	Heller et al.
5,410,326 A	4/1995	Goldstein	6,175,752 B1	1/2001	Say et al.
5,411,647 A	5/1995	Johnson et al.	6,200,265 B1	3/2001	Walsh et al.
5,425,868 A	6/1995	Pedersen	6,212,416 B1	4/2001	Ward et al.
5,431,160 A	7/1995	Wilkins	6,219,574 B1	4/2001	Cormier et al.
5,431,921 A	7/1995	Thombre	6,233,471 B1	5/2001	Berner et al.
5,462,051 A	10/1995	Oka et al.	6,248,067 B1	6/2001	Causey, III et al.
5,462,645 A	10/1995	Albery et al.	6,275,717 B1	8/2001	Gross et al.
5,497,772 A	3/1996	Schulman et al.	6,284,478 B1	9/2001	Heller et al.
5,499,243 A	3/1996	Hall	6,291,200 B1	9/2001	LeJeune et al.
5,505,828 A	4/1996	Wong et al.	6,293,925 B1	9/2001	Safabash et al.
5,507,288 A	4/1996	Bocker et al.	6,294,997 B1	9/2001	Paratore et al.
5,509,410 A	4/1996	Hill et al.	6,295,506 B1	9/2001	Heinonen et al.
			6,306,104 B1	10/2001	Cunningham et al.
			6,309,884 B1	10/2001	Cooper et al.
			6,329,161 B1	12/2001	Heller et al.
			6,359,270 B1	3/2002	Bridson

(56)

References Cited

U.S. PATENT DOCUMENTS

6,360,888	B1	3/2002	McIvor et al.	6,811,534	B2	11/2004	Bowman, IV et al.
6,366,794	B1	4/2002	Moussy et al.	6,813,519	B2	11/2004	Lebel et al.
6,377,828	B1	4/2002	Chaiken et al.	6,850,790	B2	2/2005	Berner et al.
6,379,301	B1	4/2002	Worthington et al.	6,862,465	B2	3/2005	Shults et al.
6,387,048	B1	5/2002	Schulman et al.	6,873,268	B2	3/2005	Lebel et al.
6,400,974	B1	6/2002	Lesho	6,878,112	B2	4/2005	Linberg et al.
6,405,066	B1	6/2002	Essenpreis et al.	6,881,551	B2	4/2005	Heller et al.
6,413,393	B1	7/2002	Van Antwerp et al.	6,889,331	B2	5/2005	Soerensen et al.
6,416,471	B1	7/2002	Kumar et al.	6,892,085	B2	5/2005	McIvor et al.
6,418,346	B1	7/2002	Nelson et al.	6,895,263	B2	5/2005	Shin et al.
6,424,847	B1	7/2002	Mastrototaro et al.	6,895,265	B2	5/2005	Silver
6,427,088	B1	7/2002	Bowman, IV et al.	6,923,764	B2	8/2005	Aceti et al.
6,440,068	B1	8/2002	Brown et al.	6,931,327	B2	8/2005	Goode, Jr. et al.
6,442,672	B1	8/2002	Ganapathy	6,932,894	B2	8/2005	Mao et al.
6,478,736	B1	11/2002	Mault	6,936,006	B2	8/2005	Sabra
6,484,046	B1	11/2002	Say et al.	6,937,222	B2	8/2005	Numao
6,496,729	B2	12/2002	Thompson	6,940,403	B2	9/2005	Kail, IV
6,497,655	B1	12/2002	Linberg et al.	6,941,163	B2	9/2005	Ford et al.
6,514,718	B2	2/2003	Heller et al.	6,950,708	B2	9/2005	Bowman IV et al.
6,520,326	B2	2/2003	McIvor et al.	6,958,705	B2	10/2005	Lebel et al.
6,544,212	B2	4/2003	Galley et al.	6,968,294	B2	11/2005	Gutta et al.
6,549,796	B2	4/2003	Sohrab	6,971,274	B2	12/2005	Olin
6,551,494	B1	4/2003	Heller et al.	6,974,437	B2	12/2005	Lebel et al.
6,558,320	B1	5/2003	Causey, III et al.	6,990,366	B2	1/2006	Say et al.
6,558,321	B1	5/2003	Burd et al.	6,997,907	B2	2/2006	Safabash et al.
6,558,351	B1	5/2003	Steil et al.	6,998,247	B2	2/2006	Monfre et al.
6,560,471	B1	5/2003	Heller et al.	7,003,336	B2	2/2006	Holker et al.
6,561,975	B1	5/2003	Pool et al.	7,003,340	B2	2/2006	Say et al.
6,561,978	B1	5/2003	Conn et al.	7,003,341	B2	2/2006	Say et al.
6,562,001	B2	5/2003	Lebel et al.	7,009,511	B2	3/2006	Mazar et al.
6,564,105	B2	5/2003	Starkweather et al.	7,020,508	B2	3/2006	Stivoric et al.
6,565,509	B1	5/2003	Say et al.	7,022,072	B2	4/2006	Fox et al.
6,571,128	B2	5/2003	Lebel et al.	7,024,236	B2	4/2006	Ford et al.
6,574,510	B2	6/2003	Von Arx et al.	7,024,245	B2	4/2006	Lebel et al.
6,576,101	B1	6/2003	Heller et al.	7,029,444	B2	4/2006	Shin et al.
6,577,899	B2	6/2003	Lebel et al.	7,041,068	B2	5/2006	Freeman et al.
6,579,231	B1	6/2003	Phipps	7,043,305	B2	5/2006	KenKnight et al.
6,579,690	B1	6/2003	Bonnecaze et al.	7,052,483	B2	5/2006	Wojcik
6,585,644	B2	7/2003	Lebel et al.	7,056,302	B2	6/2006	Douglas
6,591,125	B1	7/2003	Buse et al.	7,058,453	B2	6/2006	Nelson et al.
6,595,919	B2	7/2003	Berner et al.	7,060,031	B2	6/2006	Webb et al.
6,605,200	B1	8/2003	Mao et al.	7,074,307	B2	7/2006	Simpson et al.
6,605,201	B1	8/2003	Mao et al.	7,081,195	B2	7/2006	Simpson et al.
6,607,509	B2	8/2003	Bobroff et al.	7,082,334	B2	7/2006	Boute et al.
6,610,012	B2	8/2003	Mault	7,098,803	B2	8/2006	Mann et al.
6,611,206	B2	8/2003	Eshelman et al.	7,108,778	B2	9/2006	Simpson et al.
6,627,154	B1	9/2003	Goodman et al.	7,110,803	B2	9/2006	Shults et al.
6,633,772	B2	10/2003	Ford et al.	7,113,821	B1	9/2006	Sun et al.
6,635,014	B2	10/2003	Starkweather et al.	7,118,667	B2	10/2006	Lee
6,635,167	B1	10/2003	Batman et al.	7,124,027	B1	10/2006	Ernst et al.
6,641,533	B2	11/2003	Causey, III et al.	7,125,382	B2	10/2006	Zhou et al.
6,648,821	B2	11/2003	Lebel et al.	7,134,999	B2	11/2006	Brauker et al.
6,654,625	B1	11/2003	Say et al.	7,136,689	B2	11/2006	Shults et al.
6,659,948	B2	12/2003	Lebel et al.	7,154,398	B2	12/2006	Chen et al.
6,668,196	B1	12/2003	Villegas et al.	7,155,290	B2	12/2006	Von Arx et al.
6,687,546	B2	2/2004	Lebel et al.	7,171,274	B2	1/2007	Starkweather et al.
6,689,056	B1	2/2004	Kilcoyne et al.	7,190,988	B2	3/2007	Say et al.
6,694,191	B2	2/2004	Starkweather et al.	7,192,450	B2	3/2007	Brauker et al.
6,695,860	B1	2/2004	Ward et al.	7,198,606	B2	4/2007	Boecker et al.
6,698,269	B2	3/2004	Baber et al.	7,203,549	B2	4/2007	Schommer et al.
6,702,857	B2	3/2004	Brauker et al.	7,207,974	B2	4/2007	Safabash et al.
6,731,976	B2	5/2004	Penn et al.	7,225,535	B2	6/2007	Feldman et al.
6,733,446	B2	5/2004	Lebel et al.	7,226,442	B2	6/2007	Sheppard et al.
6,735,183	B2	5/2004	O'Toole et al.	7,226,978	B2	6/2007	Tapsak et al.
6,735,479	B2	5/2004	Fabian et al.	7,228,162	B2	6/2007	Ward et al.
6,740,075	B2	5/2004	Lebel et al.	7,228,182	B2	6/2007	Healy et al.
6,741,877	B1	5/2004	Shults et al.	7,237,712	B2	7/2007	DeRocco et al.
6,746,582	B2	6/2004	Heller et al.	7,267,665	B2	9/2007	Steil et al.
6,758,810	B2	7/2004	Lebel et al.	7,276,029	B2	10/2007	Goode, Jr. et al.
6,770,030	B1	8/2004	Schaupp et al.	7,286,894	B1	10/2007	Grant et al.
6,790,178	B1	9/2004	Mault et al.	7,295,867	B2	11/2007	Berner et al.
6,804,558	B2	10/2004	Haller et al.	7,299,082	B2	11/2007	Feldman et al.
6,809,653	B1	10/2004	Mann et al.	7,310,544	B2	12/2007	Brister et al.
6,810,290	B2	10/2004	Lebel et al.	7,318,816	B2	1/2008	Bobroff et al.
6,811,533	B2	11/2004	Lebel et al.	7,324,850	B2	1/2008	Persen et al.
				7,335,294	B2	2/2008	Heller et al.
				7,347,819	B2	3/2008	Lebel et al.
				7,354,420	B2	4/2008	Steil et al.
				7,364,592	B2	4/2008	Carr-Brendel et al.

(56)

References Cited

U.S. PATENT DOCUMENTS

7,366,556 B2	4/2008	Brister et al.	8,098,208 B2	1/2012	Ficker et al.
7,379,765 B2	5/2008	Petisce et al.	8,102,021 B2	1/2012	Degani
7,384,397 B2	6/2008	Zhang et al.	8,102,154 B2	1/2012	Bishop et al.
7,387,010 B2	6/2008	Sunshine et al.	8,102,263 B2	1/2012	Yeo et al.
7,399,277 B2	7/2008	Saidara et al.	8,102,789 B2	1/2012	Rosar et al.
7,402,153 B2	7/2008	Steil et al.	8,103,241 B2	1/2012	Young et al.
7,408,132 B2	8/2008	Wambsganss et al.	8,103,325 B2	1/2012	Swedlow et al.
7,419,573 B2	9/2008	Gundel	8,111,042 B2	2/2012	Bennett
7,424,318 B2	9/2008	Brister et al.	8,115,488 B2	2/2012	McDowell
7,460,898 B2	12/2008	Brister et al.	8,116,681 B2	2/2012	Baarman
7,467,003 B2	12/2008	Brister et al.	8,116,683 B2	2/2012	Baarman
7,471,972 B2	12/2008	Rhodes et al.	8,117,481 B2	2/2012	Anselmi et al.
7,492,254 B2	2/2009	Bandy et al.	8,120,493 B2	2/2012	Burr
7,494,465 B2	2/2009	Brister et al.	8,124,452 B2	2/2012	Sheats
7,497,827 B2	3/2009	Brister et al.	8,130,093 B2	3/2012	Mazar et al.
7,519,408 B2	4/2009	Rasdal et al.	8,131,351 B2	3/2012	Kalgren et al.
7,547,281 B2	6/2009	Hayes et al.	8,131,365 B2	3/2012	Zhang et al.
7,565,197 B2	7/2009	Haubrich et al.	8,131,565 B2	3/2012	Dicks et al.
7,569,030 B2	8/2009	Lebel et al.	8,132,037 B2	3/2012	Fehr et al.
7,574,266 B2	8/2009	Dudding et al.	8,135,352 B2	3/2012	Langsweirdt et al.
7,583,990 B2	9/2009	Goode, Jr. et al.	8,136,735 B2	3/2012	Arai et al.
7,591,801 B2	9/2009	Brauker et al.	8,138,925 B2	3/2012	Downie et al.
7,599,726 B2	10/2009	Goode, Jr. et al.	8,140,160 B2	3/2012	Pless et al.
7,602,310 B2	10/2009	Mann et al.	8,140,168 B2	3/2012	Olson et al.
7,604,178 B2	10/2009	Stewart	8,140,299 B2	3/2012	Siess
7,613,491 B2	11/2009	Boock et al.	8,150,321 B2	4/2012	Winter et al.
7,615,007 B2	11/2009	Shults et al.	8,150,516 B2	4/2012	Levine et al.
7,618,369 B2	11/2009	Hayter et al.	8,179,266 B2	5/2012	Hermle
7,632,228 B2	12/2009	Brauker et al.	8,216,138 B1	7/2012	McGarraugh et al.
7,637,868 B2	12/2009	Saint et al.	8,509,107 B2 *	8/2013	Sicurello et al. 370/252
7,640,048 B2	12/2009	Dobbles et al.	2001/0037366 A1	11/2001	Webb et al.
7,651,596 B2	1/2010	Petisce et al.	2001/0047127 A1	11/2001	New et al.
7,654,956 B2	2/2010	Brister et al.	2002/0013522 A1	1/2002	Lav et al.
7,657,297 B2	2/2010	Simpson et al.	2002/0013538 A1	1/2002	Teller
7,659,823 B1	2/2010	Killian et al.	2002/0019022 A1	2/2002	Dunn et al.
7,668,596 B2	2/2010	Von Arx et al.	2002/0019584 A1	2/2002	Schulze et al.
7,699,775 B2	4/2010	Desai et al.	2002/0042090 A1	4/2002	Heller et al.
7,701,052 B2	4/2010	Borland et al.	2002/0049482 A1	4/2002	Fabian et al.
7,711,402 B2	5/2010	Shults et al.	2002/0072784 A1	6/2002	Sheppard et al.
7,713,574 B2	5/2010	Brister et al.	2002/0074162 A1	6/2002	Su et al.
7,715,893 B2	5/2010	Kamath et al.	2002/0084196 A1	7/2002	Liamos et al.
7,741,734 B2	6/2010	Joannopoulos et al.	2002/0091796 A1	7/2002	Higginson et al.
7,771,352 B2	8/2010	Shults et al.	2002/0093969 A1	7/2002	Lin et al.
7,774,145 B2	8/2010	Brauker et al.	2002/0103499 A1	8/2002	Perez et al.
7,779,332 B2	8/2010	Karr et al.	2002/0106709 A1	8/2002	Potts et al.
7,782,192 B2	8/2010	Jeckelmann et al.	2002/0118528 A1	8/2002	Su et al.
7,783,333 B2	8/2010	Brister et al.	2002/0128594 A1	9/2002	Das et al.
7,791,467 B2	9/2010	Mazar et al.	2002/0161288 A1	10/2002	Shin et al.
7,792,562 B2	9/2010	Shults et al.	2002/0169635 A1	11/2002	Shillingburg
7,813,809 B2	10/2010	Strother et al.	2003/0004403 A1	1/2003	Drinan et al.
7,826,382 B2 *	11/2010	Sicurello et al. 370/242	2003/0023317 A1	1/2003	Brauker et al.
7,826,981 B2	11/2010	Goode, Jr. et al.	2003/0032874 A1	2/2003	Rhodes et al.
7,831,310 B2	11/2010	Lebel et al.	2003/0042137 A1	3/2003	Mao et al.
7,860,574 B2	12/2010	Von Arx et al.	2003/0065308 A1	4/2003	Lebel et al.
7,882,611 B2	2/2011	Shah et al.	2003/0076792 A1	4/2003	Theimer
7,899,511 B2	3/2011	Shults et al.	2003/0100821 A1	5/2003	Heller et al.
7,905,833 B2	3/2011	Brister et al.	2003/0114897 A1	6/2003	Von Arx et al.
7,912,674 B2	3/2011	Killoren Clark et al.	2003/0125612 A1	7/2003	Fox et al.
7,914,450 B2	3/2011	Goode, Jr. et al.	2003/0130616 A1	7/2003	Steil et al.
7,916,013 B2	3/2011	Stevenson	2003/0134347 A1	7/2003	Heller et al.
7,948,369 B2	5/2011	Fennell et al.	2003/0144579 A1	7/2003	Buss
7,955,258 B2	6/2011	Goscha et al.	2003/0168338 A1	9/2003	Gao et al.
7,970,448 B2	6/2011	Shults et al.	2003/0176933 A1	9/2003	Lebel et al.
7,974,672 B2	7/2011	Shults et al.	2003/0187338 A1	10/2003	Say et al.
7,978,063 B2	7/2011	Baldus et al.	2003/0199790 A1	10/2003	Boecker et al.
7,999,674 B2	8/2011	Kamen	2003/0204290 A1	10/2003	Sadler et al.
8,010,256 B2 *	8/2011	Oowada 701/46	2003/0208113 A1	11/2003	Mault et al.
8,072,310 B1	12/2011	Everhart	2003/0208114 A1	11/2003	Ackerman
8,090,445 B2	1/2012	Ginggen	2003/0212317 A1	11/2003	Kovatchev et al.
8,093,991 B2	1/2012	Stevenson et al.	2003/0212379 A1	11/2003	Bylund et al.
8,094,009 B2	1/2012	Allen et al.	2003/0212579 A1	11/2003	Brown et al.
8,098,159 B2	1/2012	Batra et al.	2003/0216630 A1	11/2003	Jersey-Willuhn et al.
8,098,160 B2	1/2012	Howarth et al.	2003/0217966 A1	11/2003	Tapsak et al.
8,098,161 B2	1/2012	Lavedas	2004/0010207 A1	1/2004	Flaherty et al.
8,098,201 B2	1/2012	Choi et al.	2004/0011671 A1	1/2004	Shults et al.
			2004/0017300 A1	1/2004	Kotzin et al.
			2004/0030531 A1	2/2004	Miller et al.
			2004/0039298 A1	2/2004	Abreu
			2004/0040840 A1	3/2004	Mao et al.

(56)

References Cited

U.S. PATENT DOCUMENTS

2004/0041749 A1	3/2004	Dixon	2006/0031094 A1	2/2006	Cohen et al.
2004/0045879 A1	3/2004	Shults et al.	2006/0036139 A1	2/2006	Brister et al.
2004/0064068 A1	4/2004	DeNuzzio et al.	2006/0036140 A1	2/2006	Brister et al.
2004/0100376 A1	5/2004	Lye et al.	2006/0036141 A1	2/2006	Kamath et al.
2004/0105411 A1	6/2004	Boatwright et al.	2006/0036142 A1	2/2006	Brister et al.
2004/0106858 A1	6/2004	Say et al.	2006/0036143 A1	2/2006	Brister et al.
2004/0116786 A1	6/2004	Iijima et al.	2006/0036144 A1	2/2006	Brister et al.
2004/0122353 A1	6/2004	Shahmirian et al.	2006/0036145 A1	2/2006	Brister et al.
2004/0133164 A1	7/2004	Funderburk et al.	2006/0129733 A1	6/2006	Solbelman
2004/0138588 A1	7/2004	Saikley et al.	2006/0142651 A1	6/2006	Brister et al.
2004/0146909 A1	7/2004	Duong et al.	2006/0154642 A1	7/2006	Scannell
2004/0152622 A1	8/2004	Keith et al.	2006/0155180 A1	7/2006	Brister et al.
2004/0167801 A1	8/2004	Say et al.	2006/0166629 A1	7/2006	Reggiardo
2004/0171921 A1	9/2004	Say et al.	2006/0173260 A1	8/2006	Gaoni et al.
2004/0176672 A1	9/2004	Silver et al.	2006/0173406 A1	8/2006	Hayes et al.
2004/0186362 A1	9/2004	Brauker et al.	2006/0173444 A1	8/2006	Choy et al.
2004/0186365 A1	9/2004	Jin et al.	2006/0183985 A1	8/2006	Brister et al.
2004/0193025 A1	9/2004	Steil et al.	2006/0189863 A1	8/2006	Peyser et al.
2004/0193090 A1	9/2004	Lebel et al.	2006/0202805 A1	9/2006	Schulman et al.
2004/0197846 A1	10/2004	Hockersmith et al.	2006/0202859 A1	9/2006	Mastrototaro et al.
2004/0199059 A1	10/2004	Brauker et al.	2006/0222566 A1	10/2006	Brauker et al.
2004/0204687 A1	10/2004	Mogensen et al.	2006/0224109 A1	10/2006	Steil et al.
2004/0225338 A1	11/2004	Lebel et al.	2006/0224141 A1	10/2006	Rush et al.
2004/0236200 A1	11/2004	Say et al.	2006/0229512 A1	10/2006	Petisce et al.
2004/0254433 A1	12/2004	Bandis et al.	2006/0247508 A1	11/2006	Fennell
2004/0267300 A1	12/2004	Mace	2006/0247710 A1	11/2006	Goetz et al.
2005/0004439 A1	1/2005	Shin et al.	2006/0272652 A1	12/2006	Stocker et al.
2005/0004494 A1	1/2005	Perez et al.	2006/0287691 A1	12/2006	Drew
2005/0010269 A1	1/2005	Lebel et al.	2006/0290496 A1	12/2006	Peeters et al.
2005/0027177 A1	2/2005	Shin et al.	2006/0293607 A1	12/2006	Alt et al.
2005/0031689 A1	2/2005	Shults et al.	2007/0016381 A1	1/2007	Kamath et al.
2005/0038332 A1	2/2005	Saidara et al.	2007/0027381 A1	2/2007	Stafford
2005/0043598 A1	2/2005	Goode, Jr. et al.	2007/0032706 A1	2/2007	Kamath et al.
2005/0090607 A1	4/2005	Tapsak et al.	2007/0033074 A1	2/2007	Nitzan et al.
2005/0096511 A1	5/2005	Fox et al.	2007/0055799 A1	3/2007	Koehler et al.
2005/0096512 A1	5/2005	Fox et al.	2007/0060814 A1	3/2007	Stafford
2005/0112169 A1	5/2005	Brauker et al.	2007/0066873 A1	3/2007	Kamath et al.
2005/0113653 A1	5/2005	Fox et al.	2007/0071681 A1	3/2007	Gadkar et al.
2005/0113886 A1	5/2005	Fischell et al.	2007/0073129 A1	3/2007	Shah et al.
2005/0114068 A1	5/2005	Chey et al.	2007/0078320 A1	4/2007	Stafford
2005/0121322 A1	6/2005	Say et al.	2007/0078321 A1	4/2007	Mazza et al.
2005/0131346 A1	6/2005	Douglas	2007/0078322 A1	4/2007	Stafford
2005/0143635 A1	6/2005	Kamath et al.	2007/0078323 A1	4/2007	Reggiardo et al.
2005/0176136 A1	8/2005	Burd et al.	2007/0106135 A1	5/2007	Sloan et al.
2005/0177398 A1	8/2005	Watanabe et al.	2007/0124002 A1	5/2007	Estes et al.
2005/0182306 A1	8/2005	Sloan	2007/0149875 A1	6/2007	Ouyang et al.
2005/0187720 A1	8/2005	Goode, Jr. et al.	2007/0156033 A1	7/2007	Causey, III et al.
2005/0192494 A1	9/2005	Ginsberg	2007/0163880 A1	7/2007	Woo et al.
2005/0192557 A1	9/2005	Brauker et al.	2007/0168224 A1	7/2007	Letzt et al.
2005/0195930 A1	9/2005	Spital et al.	2007/0173706 A1	7/2007	Neinast et al.
2005/0199494 A1	9/2005	Say et al.	2007/0173761 A1	7/2007	Kanderian et al.
2005/0203360 A1	9/2005	Brauker et al.	2007/0179349 A1	8/2007	Hoyme et al.
2005/0204134 A1	9/2005	Von Arx et al.	2007/0179352 A1	8/2007	Randlov et al.
2005/0239154 A1	10/2005	Feldman et al.	2007/0191701 A1	8/2007	Feldman et al.
2005/0241957 A1	11/2005	Mao et al.	2007/0203407 A1	8/2007	Hoss et al.
2005/0245795 A1	11/2005	Goode, Jr. et al.	2007/0203966 A1	8/2007	Brauker et al.
2005/0245799 A1	11/2005	Brauker et al.	2007/0232880 A1	10/2007	Siddiqui et al.
2005/0245839 A1	11/2005	Stivorice et al.	2007/0235331 A1	10/2007	Simpson et al.
2005/0245904 A1	11/2005	Estes et al.	2007/0244383 A1	10/2007	Talbot et al.
2005/0251033 A1	11/2005	Scarantino et al.	2007/0249922 A1	10/2007	Peyser et al.
2005/0287620 A1	12/2005	Heller et al.	2007/0253021 A1	11/2007	Mehta et al.
2006/0001538 A1	1/2006	Kraft et al.	2007/0255348 A1	11/2007	Holtzclaw
2006/0004270 A1	1/2006	Bedard et al.	2007/0255531 A1	11/2007	Drew
2006/0015020 A1	1/2006	Neale et al.	2007/0258395 A1	11/2007	Jollota et al.
2006/0015024 A1	1/2006	Brister et al.	2007/0270672 A1	11/2007	Hayter
2006/0016700 A1	1/2006	Brister et al.	2007/0285238 A1	12/2007	Batra
2006/0019327 A1	1/2006	Brister et al.	2007/0299617 A1	12/2007	Willis
2006/0020186 A1	1/2006	Brister et al.	2008/0009304 A1	1/2008	Fry
2006/0020187 A1	1/2006	Brister et al.	2008/0009692 A1	1/2008	Stafford
2006/0020188 A1	1/2006	Kamath et al.	2008/0017522 A1	1/2008	Heller et al.
2006/0020189 A1	1/2006	Brister et al.	2008/0018433 A1	1/2008	Pitt-Pladdy
2006/0020190 A1	1/2006	Kamath et al.	2008/0021666 A1	1/2008	Goode, Jr. et al.
2006/0020191 A1	1/2006	Brister et al.	2008/0029391 A1	2/2008	Mao et al.
2006/0020192 A1	1/2006	Brister et al.	2008/0030369 A1	2/2008	Mann et al.
2006/0029177 A1	2/2006	Cranford, Jr. et al.	2008/0033254 A1	2/2008	Kamath et al.
			2008/0039702 A1	2/2008	Hayter et al.
			2008/0045161 A1	2/2008	Lee et al.
			2008/0045824 A1	2/2008	Tapsak et al.
			2008/0055070 A1	3/2008	Bange et al.

(56)

References Cited

U.S. PATENT DOCUMENTS

2008/0058625	A1	3/2008	McGarraugh et al.	2008/0312844	A1	12/2008	Hayter et al.
2008/0060955	A1	3/2008	Goodnow	2008/0312845	A1	12/2008	Hayter et al.
2008/0064937	A1	3/2008	McGarraugh et al.	2008/0314395	A1	12/2008	Kovatchev et al.
2008/0064943	A1	3/2008	Talbot et al.	2009/0005665	A1	1/2009	Hayter et al.
2008/0071156	A1	3/2008	Brister et al.	2009/0005666	A1	1/2009	Shin et al.
2008/0071157	A1	3/2008	McGarraugh et al.	2009/0006034	A1	1/2009	Hayter et al.
2008/0071158	A1	3/2008	McGarraugh et al.	2009/0012379	A1	1/2009	Goode et al.
2008/0071328	A1	3/2008	Haubrich et al.	2009/0018424	A1	1/2009	Kamath et al.
2008/0081977	A1	4/2008	Hayter et al.	2009/0018425	A1	1/2009	Ouyang et al.
2008/0083617	A1	4/2008	Simpson et al.	2009/0030294	A1	1/2009	Petisce et al.
2008/0086042	A1	4/2008	Brister et al.	2009/0033482	A1	2/2009	Hayter et al.
2008/0086044	A1	4/2008	Brister et al.	2009/0036747	A1	2/2009	Hayter et al.
2008/0086273	A1	4/2008	Shults et al.	2009/0036758	A1	2/2009	Brauker et al.
2008/0097289	A1	4/2008	Steil et al.	2009/0036760	A1	2/2009	Hayter
2008/0108942	A1	5/2008	Brister et al.	2009/0036763	A1	2/2009	Brauker et al.
2008/0119705	A1	5/2008	Patel et al.	2009/0043181	A1	2/2009	Brauker et al.
2008/0139910	A1	6/2008	Mastrototaro et al.	2009/0043182	A1	2/2009	Brauker et al.
2008/0154513	A1	6/2008	Kovatchev et al.	2009/0043525	A1	2/2009	Brauker et al.
2008/0167543	A1	7/2008	Say et al.	2009/0043541	A1	2/2009	Brauker et al.
2008/0167572	A1	7/2008	Stivoric et al.	2009/0043542	A1	2/2009	Brauker et al.
2008/0172205	A1	7/2008	Breton et al.	2009/0045055	A1	2/2009	Rhodes et al.
2008/0183060	A1	7/2008	Steil et al.	2009/0048503	A1	2/2009	Dalal et al.
2008/0183061	A1	7/2008	Goode et al.	2009/0055149	A1	2/2009	Hayter et al.
2008/0183399	A1	7/2008	Goode et al.	2009/0062633	A1	3/2009	Brauker et al.
2008/0188731	A1	8/2008	Brister et al.	2009/0062635	A1	3/2009	Brauker et al.
2008/0188796	A1	8/2008	Steil et al.	2009/0062767	A1	3/2009	VanAntwerp et al.
2008/0189051	A1	8/2008	Goode et al.	2009/0063402	A1	3/2009	Hayter
2008/0194934	A1	8/2008	Ray et al.	2009/0076356	A1	3/2009	Simpson et al.
2008/0194935	A1	8/2008	Brister et al.	2009/0076360	A1	3/2009	Brister et al.
2008/0194936	A1	8/2008	Goode et al.	2009/0076361	A1	3/2009	Kamath et al.
2008/0194937	A1	8/2008	Goode et al.	2009/0085768	A1	4/2009	Patel et al.
2008/0194938	A1	8/2008	Brister et al.	2009/0085873	A1	4/2009	Betts et al.
2008/0195232	A1	8/2008	Carr-Brendel et al.	2009/0099436	A1	4/2009	Brister et al.
2008/0195967	A1	8/2008	Goode et al.	2009/0105554	A1	4/2009	Stahmann et al.
2008/0197024	A1	8/2008	Simpson et al.	2009/0105636	A1	4/2009	Hayter et al.
2008/0200788	A1	8/2008	Brister et al.	2009/0112478	A1	4/2009	Mueller, Jr. et al.
2008/0200789	A1	8/2008	Brister et al.	2009/0124877	A1	5/2009	Goode et al.
2008/0200791	A1	8/2008	Simpson et al.	2009/0124878	A1	5/2009	Goode et al.
2008/0208025	A1	8/2008	Shults et al.	2009/0124879	A1	5/2009	Brister et al.
2008/0208113	A1	8/2008	Damiano et al.	2009/0124964	A1	5/2009	Leach et al.
2008/0214915	A1	9/2008	Brister et al.	2009/0131768	A1	5/2009	Simpson et al.
2008/0214918	A1	9/2008	Brister et al.	2009/0131769	A1	5/2009	Leach et al.
2008/0228051	A1	9/2008	Shults et al.	2009/0131776	A1	5/2009	Simpson et al.
2008/0228054	A1	9/2008	Shults et al.	2009/0131777	A1	5/2009	Simpson et al.
2008/0235469	A1	9/2008	Drew	2009/0137886	A1	5/2009	Shariati et al.
2008/0242961	A1	10/2008	Brister et al.	2009/0137887	A1	5/2009	Shariati et al.
2008/0255434	A1	10/2008	Hayter et al.	2009/0143659	A1	6/2009	Li et al.
2008/0255437	A1	10/2008	Hayter	2009/0143660	A1	6/2009	Brister et al.
2008/0255438	A1	10/2008	Saidara et al.	2009/0150186	A1	6/2009	Cohen et al.
2008/0255808	A1	10/2008	Hayter	2009/0156919	A1	6/2009	Brister et al.
2008/0256048	A1	10/2008	Hayter	2009/0156924	A1	6/2009	Shariati et al.
2008/0262469	A1	10/2008	Brister et al.	2009/0163790	A1	6/2009	Brister et al.
2008/0275313	A1	11/2008	Brister et al.	2009/0163791	A1	6/2009	Brister et al.
2008/0278331	A1	11/2008	Hayter et al.	2009/0164190	A1	6/2009	Hayter
2008/0278332	A1	11/2008	Fennell et al.	2009/0164239	A1	6/2009	Hayter et al.
2008/0278333	A1	11/2008	Fennell et al.	2009/0164251	A1	6/2009	Hayter
2008/0281171	A1	11/2008	Fennell et al.	2009/0178459	A1	7/2009	Li et al.
2008/0281179	A1	11/2008	Fennell et al.	2009/0182217	A1	7/2009	Li et al.
2008/0281840	A1	11/2008	Fennell et al.	2009/0189738	A1	7/2009	Hermle
2008/0287761	A1	11/2008	Hayter	2009/0192366	A1	7/2009	Mensinger et al.
2008/0287762	A1	11/2008	Hayter	2009/0192380	A1	7/2009	Shariati et al.
2008/0287763	A1	11/2008	Hayter	2009/0192722	A1	7/2009	Shariati et al.
2008/0287764	A1	11/2008	Rasdal et al.	2009/0192724	A1	7/2009	Brauker et al.
2008/0287765	A1	11/2008	Rasdal et al.	2009/0192745	A1	7/2009	Kamath et al.
2008/0287766	A1	11/2008	Rasdal et al.	2009/0192751	A1	7/2009	Kamath et al.
2008/0288180	A1	11/2008	Hayter	2009/0198118	A1	8/2009	Hayter et al.
2008/0288204	A1	11/2008	Hayter et al.	2009/0203981	A1	8/2009	Brauker et al.
2008/0296155	A1	12/2008	Shults et al.	2009/0204341	A1	8/2009	Brauker et al.
2008/0306368	A1	12/2008	Goode et al.	2009/0216100	A1	8/2009	Ebner et al.
2008/0306434	A1	12/2008	Dobbles et al.	2009/0216103	A1	8/2009	Brister et al.
2008/0306435	A1	12/2008	Kamath et al.	2009/0234200	A1	9/2009	Husheer
2008/0306444	A1	12/2008	Brister et al.	2009/0240120	A1	9/2009	Mensinger et al.
2008/0312518	A1	12/2008	Jina et al.	2009/0240128	A1	9/2009	Mensinger et al.
2008/0312841	A1	12/2008	Hayter	2009/0240193	A1	9/2009	Mensinger et al.
2008/0312842	A1	12/2008	Hayter	2009/0242425	A1	10/2009	Kamath et al.
				2009/0247855	A1	10/2009	Boock et al.
				2009/0247856	A1	10/2009	Boock et al.
				2009/0247857	A1	10/2009	Harper et al.

(56)

References Cited

U.S. PATENT DOCUMENTS

2009/0247931 A1 10/2009 Damgaard-Sorensen
 2009/0267765 A1 10/2009 Greene et al.
 2009/0287073 A1 11/2009 Boock et al.
 2009/0287074 A1 11/2009 Shults et al.
 2009/0289796 A1 11/2009 Blumberg
 2009/0298182 A1 12/2009 Schulat et al.
 2009/0299155 A1 12/2009 Yang et al.
 2009/0299156 A1 12/2009 Simpson et al.
 2009/0299162 A1 12/2009 Brauker et al.
 2009/0299276 A1 12/2009 Brauker et al.
 2010/0010324 A1 1/2010 Brauker et al.
 2010/0010331 A1 1/2010 Brauker et al.
 2010/0010332 A1 1/2010 Brauker et al.
 2010/0016687 A1 1/2010 Brauker et al.
 2010/0016698 A1 1/2010 Rasdal et al.
 2010/0022855 A1 1/2010 Brauker et al.
 2010/0030038 A1 2/2010 Brauker et al.
 2010/0030053 A1 2/2010 Goode, Jr. et al.
 2010/0030484 A1 2/2010 Brauker et al.
 2010/0030485 A1 2/2010 Brauker et al.
 2010/0036215 A1 2/2010 Goode, Jr. et al.
 2010/0036216 A1 2/2010 Goode, Jr. et al.
 2010/0036222 A1 2/2010 Goode, Jr. et al.
 2010/0036223 A1 2/2010 Goode, Jr. et al.
 2010/0036225 A1 2/2010 Goode, Jr. et al.
 2010/0041971 A1 2/2010 Goode, Jr. et al.
 2010/0045465 A1 2/2010 Brauker et al.
 2010/0049024 A1 2/2010 Saint et al.
 2010/0057040 A1 3/2010 Hayter
 2010/0057041 A1 3/2010 Hayter
 2010/0057042 A1 3/2010 Hayter
 2010/0057044 A1 3/2010 Hayter
 2010/0057057 A1 3/2010 Hayter et al.
 2010/0063373 A1 3/2010 Kamath et al.
 2010/0076283 A1 3/2010 Simpson et al.
 2010/0081906 A1 4/2010 Hayter et al.
 2010/0081908 A1 4/2010 Dobbles et al.
 2010/0081910 A1 4/2010 Brister et al.
 2010/0087724 A1 4/2010 Brauker et al.
 2010/0096259 A1 4/2010 Zhang et al.
 2010/0099970 A1 4/2010 Shults et al.
 2010/0099971 A1 4/2010 Shults et al.
 2010/0119693 A1 5/2010 Tapsak et al.
 2010/0121169 A1 5/2010 Petisce et al.
 2010/0160759 A1 6/2010 Celentano et al.
 2010/0168538 A1 7/2010 Keenan et al.
 2010/0190435 A1 7/2010 Cook et al.
 2011/0004276 A1 1/2011 Blair et al.
 2011/0148905 A1 6/2011 Simmons et al.
 2011/0152637 A1 6/2011 Kateraas et al.
 2011/0257895 A1 10/2011 Brauker et al.

FOREIGN PATENT DOCUMENTS

CA 2413148 8/2010
 DE 4401400 7/1995
 EP 0098592 1/1984
 EP 0127958 12/1984
 EP 0320109 6/1989
 EP 0353328 2/1990
 EP 0390390 10/1990
 EP 0396788 11/1990
 EP 0286118 1/1995
 EP 0724859 8/1996
 EP 0678308 5/2000
 EP 1048264 11/2000
 EP 1292218 3/2003
 EP 1077634 7/2003
 EP 1666091 6/2006
 EP 1703697 9/2006
 EP 1704893 9/2006
 EP 1897487 11/2009
 EP 1897492 11/2009
 EP 2113864 11/2009

EP 1897488 12/2009
 EP 1681992 4/2010
 EP 1448489 8/2010
 EP 1971396 8/2010
 EP 2201969 3/2011
 EP 2153382 2/2012
 EP 2284773 2/2012
 JP 2004/234622 8/2004
 JP 2007/516783 6/2007
 WO WO-93/06237 4/1993
 WO WO-96/25089 8/1996
 WO WO-96/35370 11/1996
 WO WO-97/33513 9/1997
 WO WO-98/35053 8/1998
 WO WO-99/56613 11/1999
 WO WO-00/49940 8/2000
 WO WO-00/59370 10/2000
 WO WO-00/74753 12/2000
 WO WO-00/78992 12/2000
 WO WO-01/52935 7/2001
 WO WO-01/54753 8/2001
 WO WO-02/16905 2/2002
 WO WO-02/058537 8/2002
 WO WO-03/076893 9/2003
 WO WO-03/082091 10/2003
 WO WO-03/085372 10/2003
 WO WO-2004/047445 6/2004
 WO WO-2004/061420 7/2004
 WO WO-2005/040404 5/2005
 WO WO-2005/041766 5/2005
 WO WO-2005/045744 5/2005
 WO WO-2005/089103 9/2005
 WO WO-2006/024671 3/2006
 WO WO-2006/032653 3/2006
 WO WO-2006/064397 6/2006
 WO WO-2006/124099 11/2006
 WO WO-2008/086541 7/2008
 WO WO-2008/138006 11/2008
 WO WO-2011/022418 2/2011

OTHER PUBLICATIONS

Lodwig, V., et al., "Continuous Glucose Monitoring with Glucose Sensors: Calibration and Assessment Criteria", *Diabetes Technology & Therapeutics*, vol. 5, No. 4, 2003, pp. 573-587.
 Rodriguez, N., et al., "Flexible Communication and Control Protocol for Injectable Neuromuscular Interfaces", *IEEE Transactions on Biomedical Circuits and Systems, IEEE*, vol. 1, No. 1, 2007, pp. 19-27.
 Tung, S., "Layers of Security Active RFID Tags", *RFID Handbook: Applications, Technology, Security, and Privacy*, Edited by Ehson, et al., Chapter 33, 2008, pp. 1-28.
 Isermann, R., "Supervision, Fault-Detection and Fault-Diagnosis Methods—An Introduction", *Control Engineering Practice*, vol. 5, No. 5, 1997, pp. 639-652.
 Isermann, R., et al., "Trends in the Application of Model-Based Fault Detection and Diagnosis of Technical Processes", *Control Engineering Practice*, vol. 5, No. 5, 1997, pp. 709-719.
 Kaplan, S. M., "Wiley Electrical and Electronics Engineering Dictionary", IEEE Press, 2004, pp. 141, 142, 548, 549.
 Lortz, J., et al., "What is Bluetooth? We Explain The Newest Short-Range Connectivity Technology", *Smart Computing Learning Series, Wireless Computing*, vol. 8, Issue 5, 2002, pp. 72-74.
 Chinese Patent Application No. 20090129741.7, Office Action mailed May 28, 2012.
 European Patent Application No. EP09755752.4, Extended European Search Report mailed Mar. 14, 2012.
 PCT Application No. PCT/US2009/045545, International Preliminary Report on Patentability mailed Dec. 9, 2010.
 PCT Application No. PCT/US2009/045545, International Search Report and Written Opinion of the International Searching Authority mailed Jul. 20, 2009.
 U.S. Appl. No. 12/130,995, Notice of Allowance mailed Aug. 27, 2010.
 U.S. Appl. No. 12/130,995, Office Action mailed Apr. 6, 2010.
 U.S. Appl. No. 12/130,995, Supplemental Notice of Allowance mailed Sep. 16, 2010.

(56)

References Cited

OTHER PUBLICATIONS

U.S. Appl. No. 12/917,455, Office Action mailed Mar. 27, 2013.
U.S. Appl. No. 12/917,455, Office Action mailed Nov. 23, 2012.

U.S. Appl. No. 12/917,455, Notice of Allowance mailed Jun. 5, 2013.
Japanese Application No. 2011-511834, Original Language and
English Translation of Office Action mailed Nov. 26, 2013.

* cited by examiner

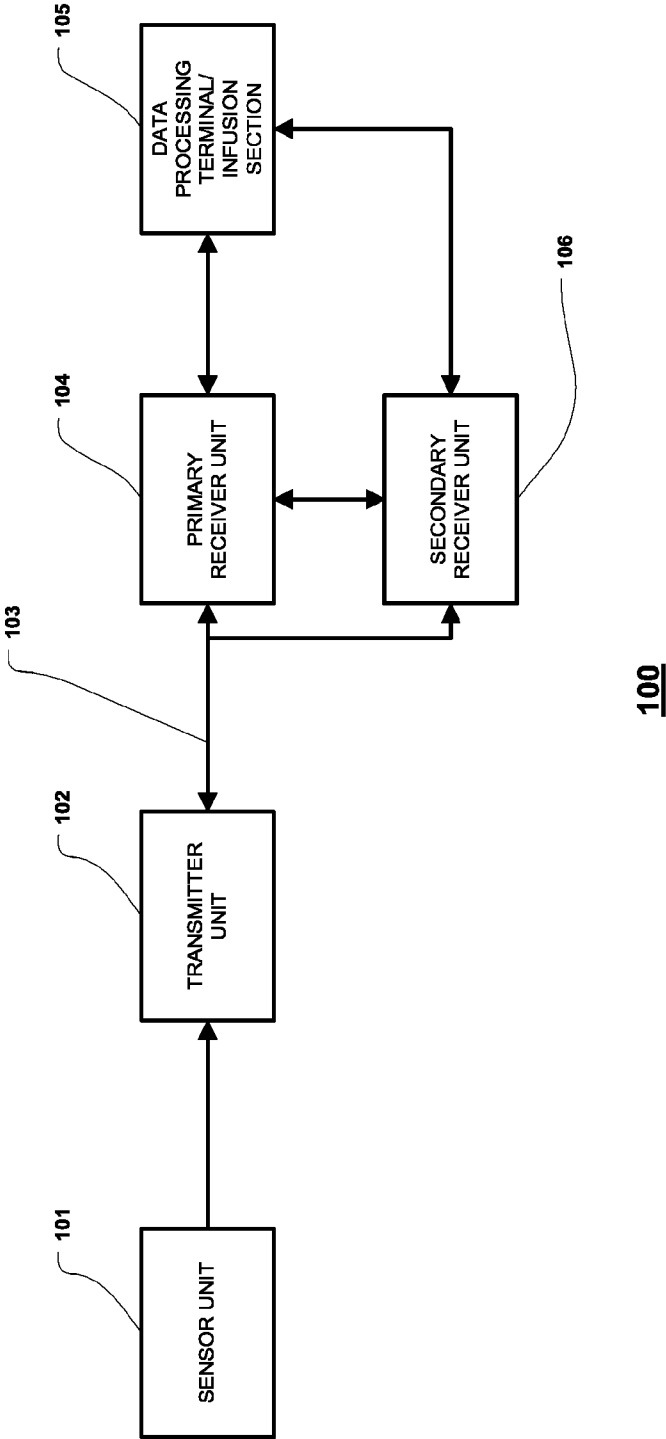


FIGURE 1

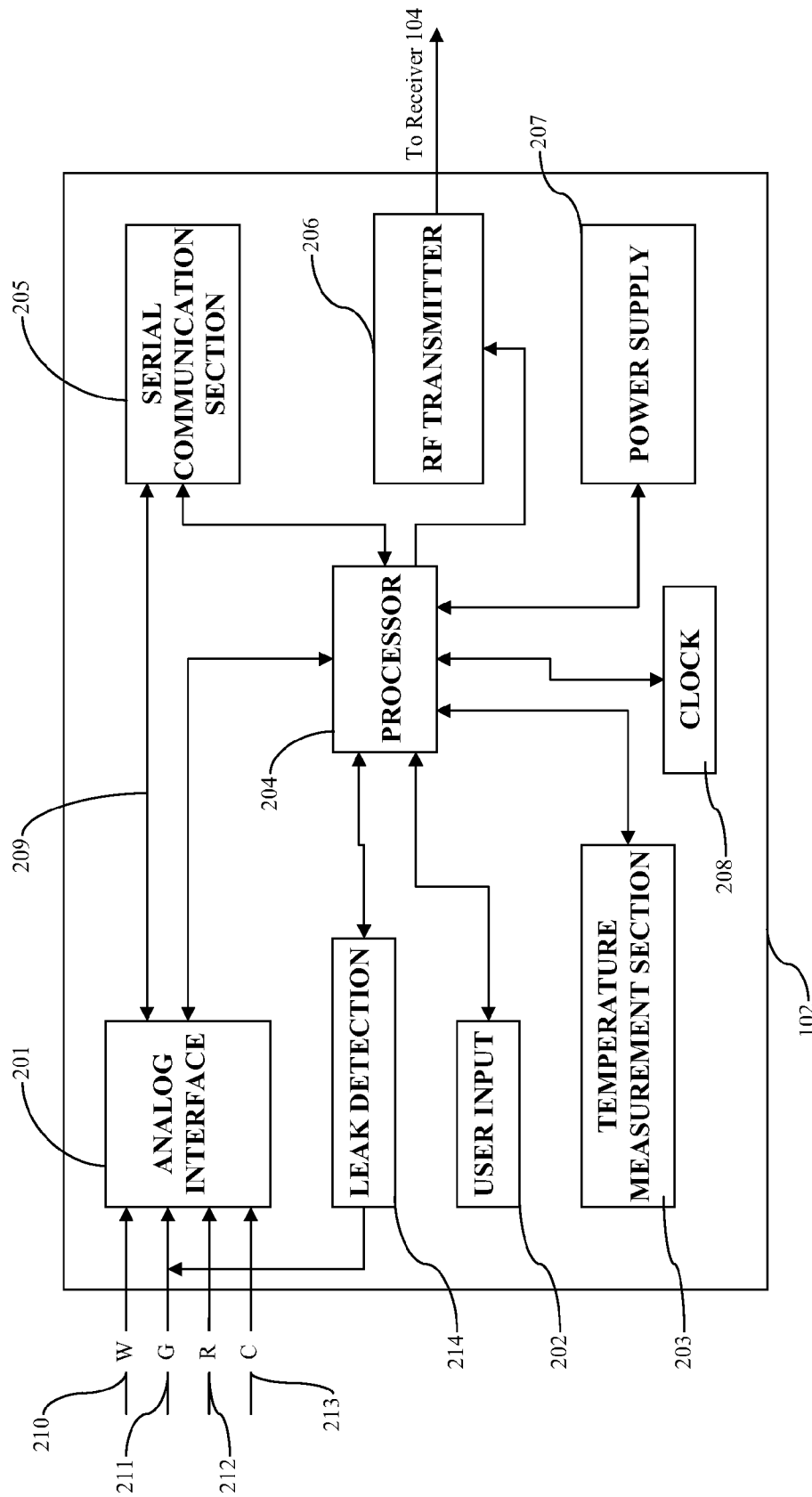


FIGURE 2

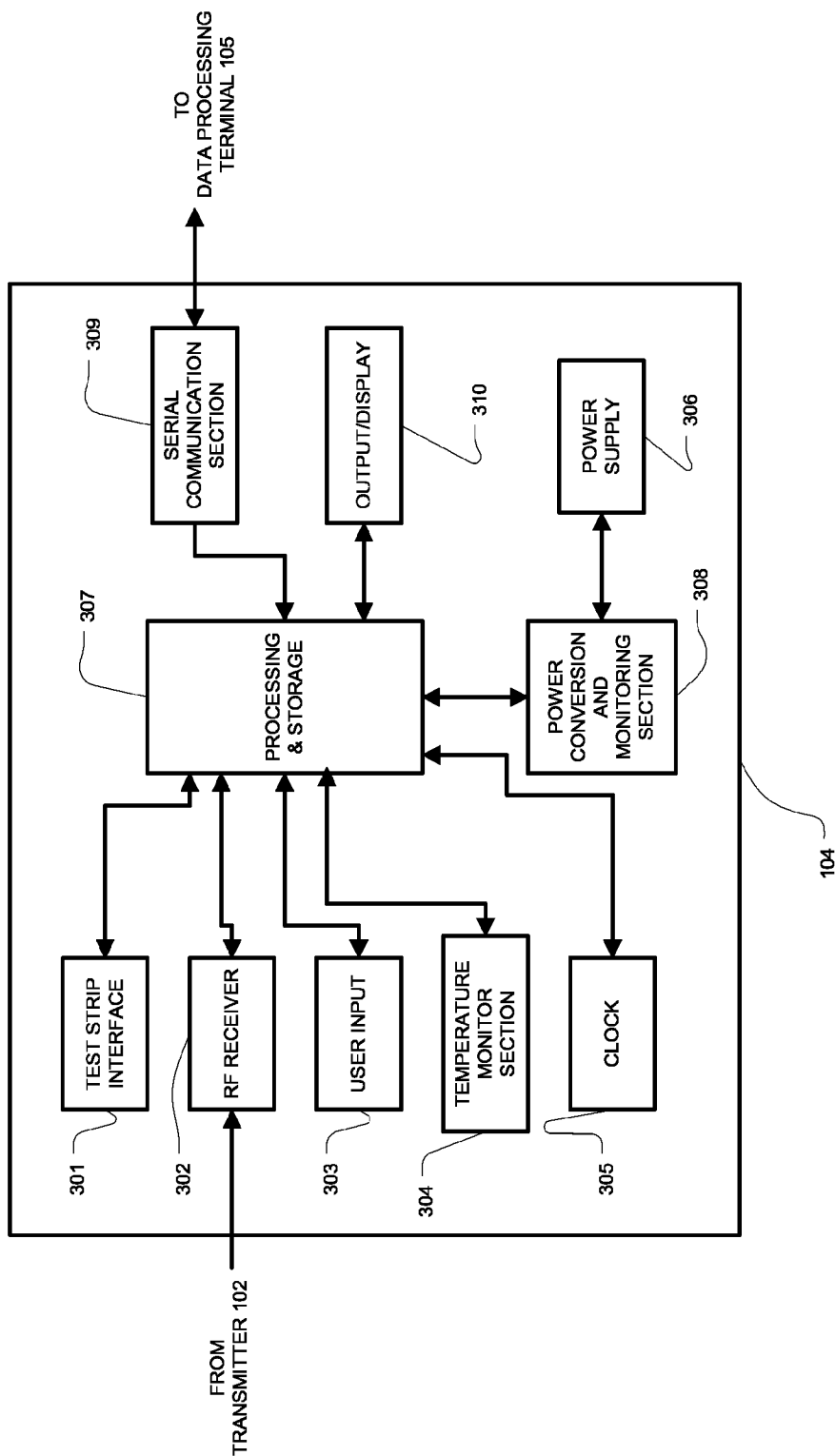
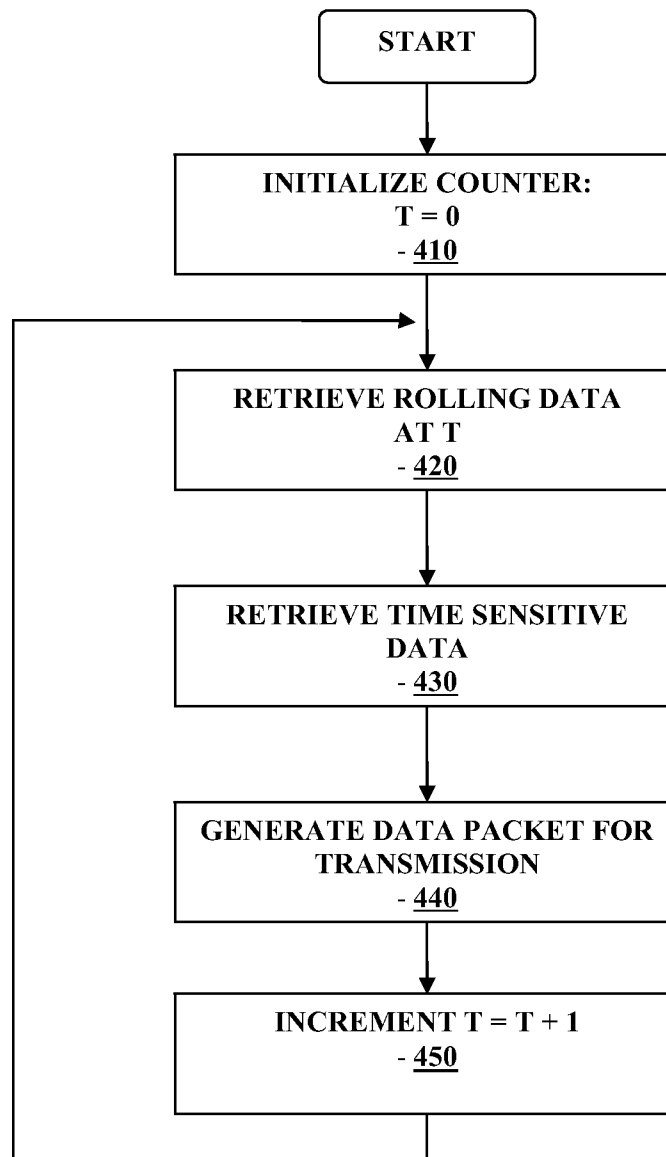
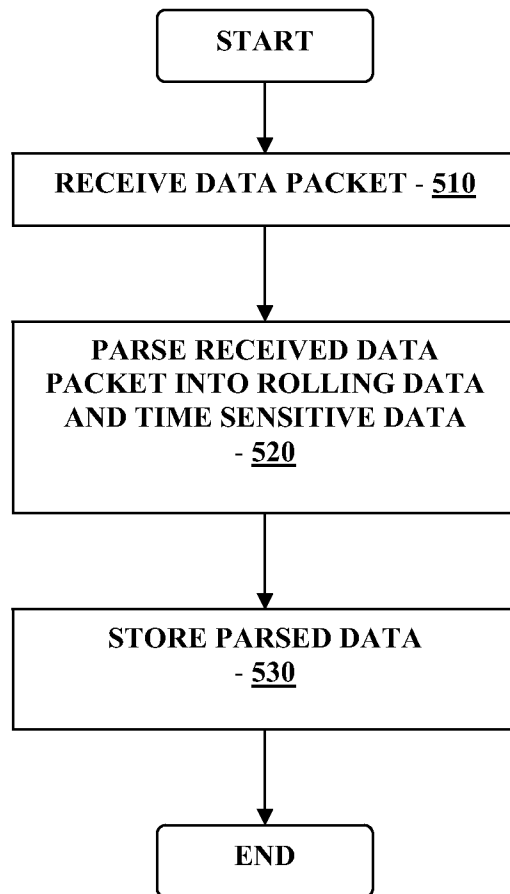


FIGURE 3

**FIGURE 4**

**FIGURE 5**

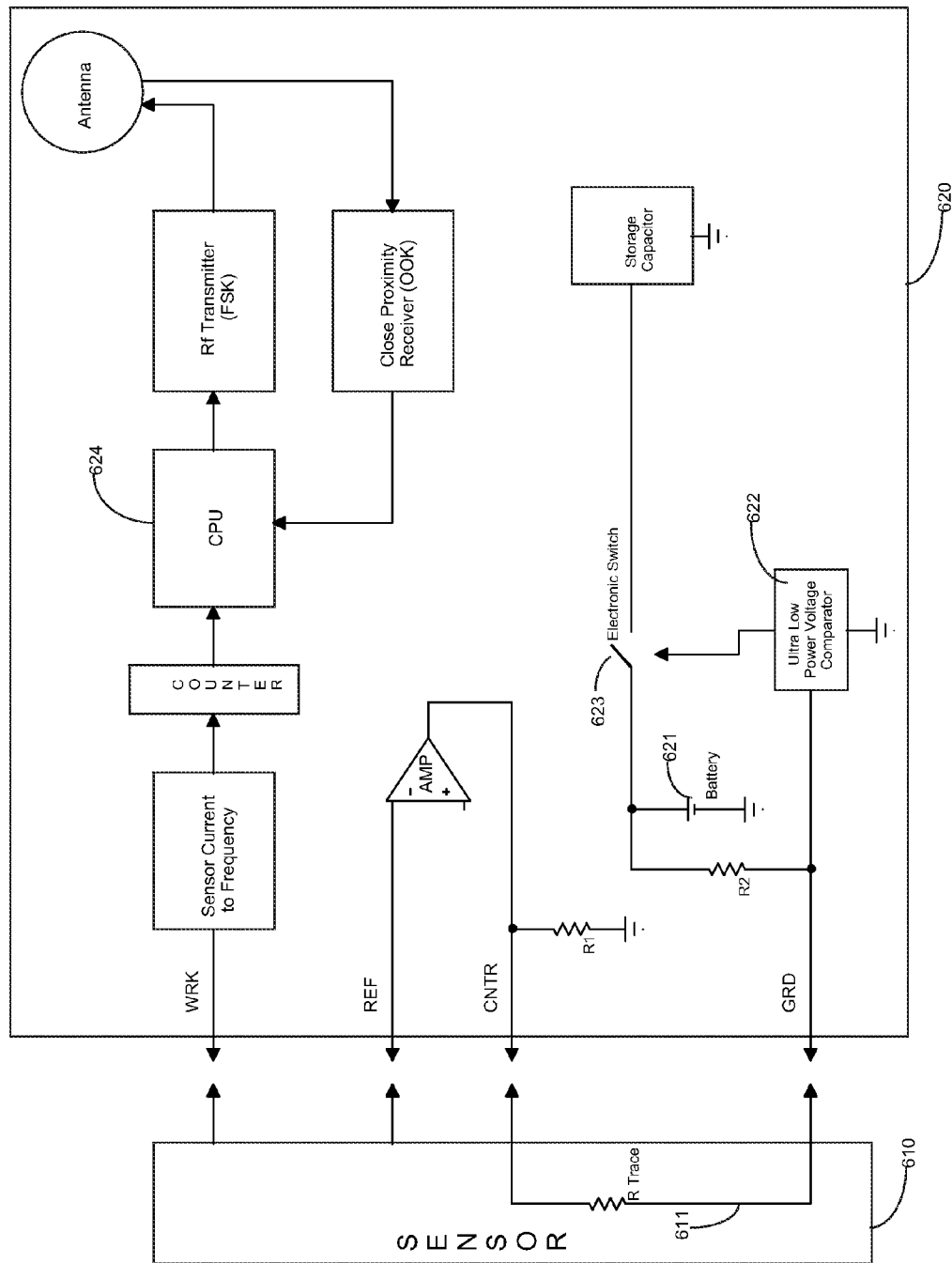
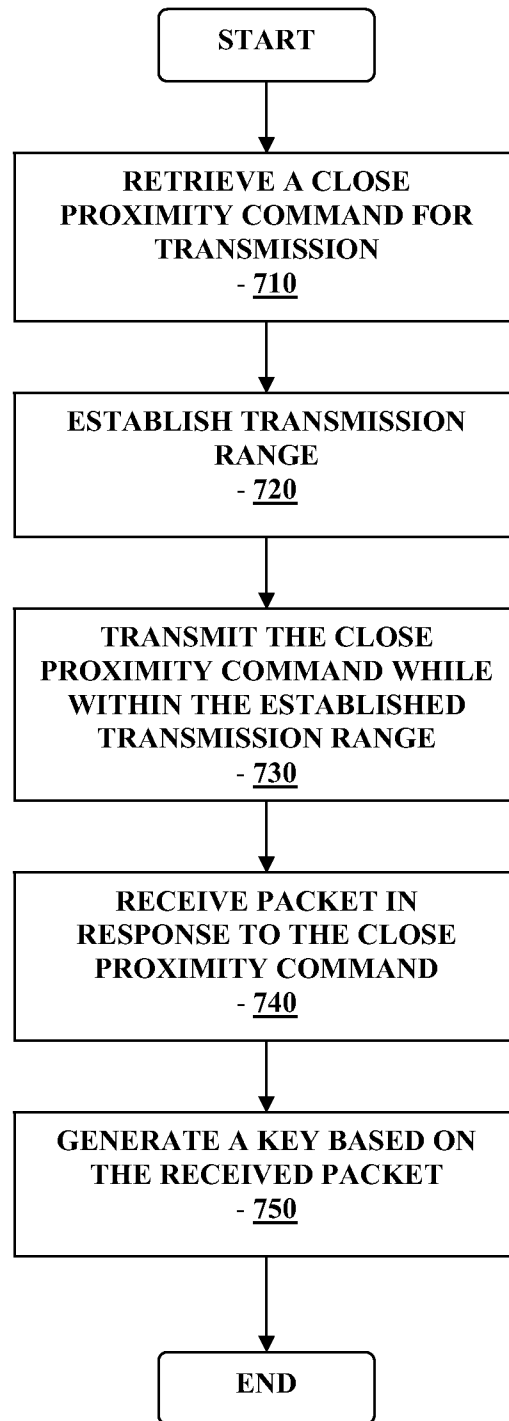
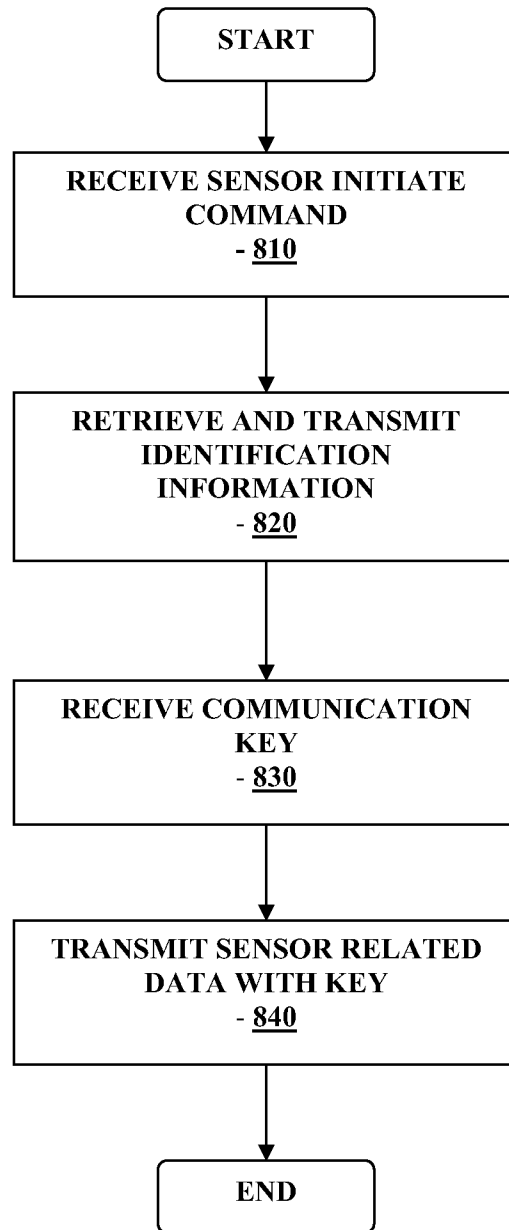
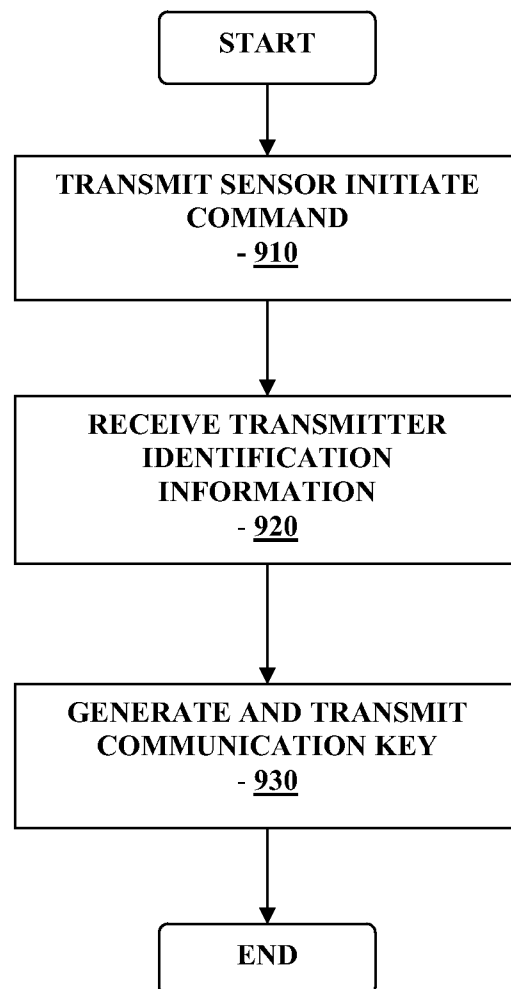
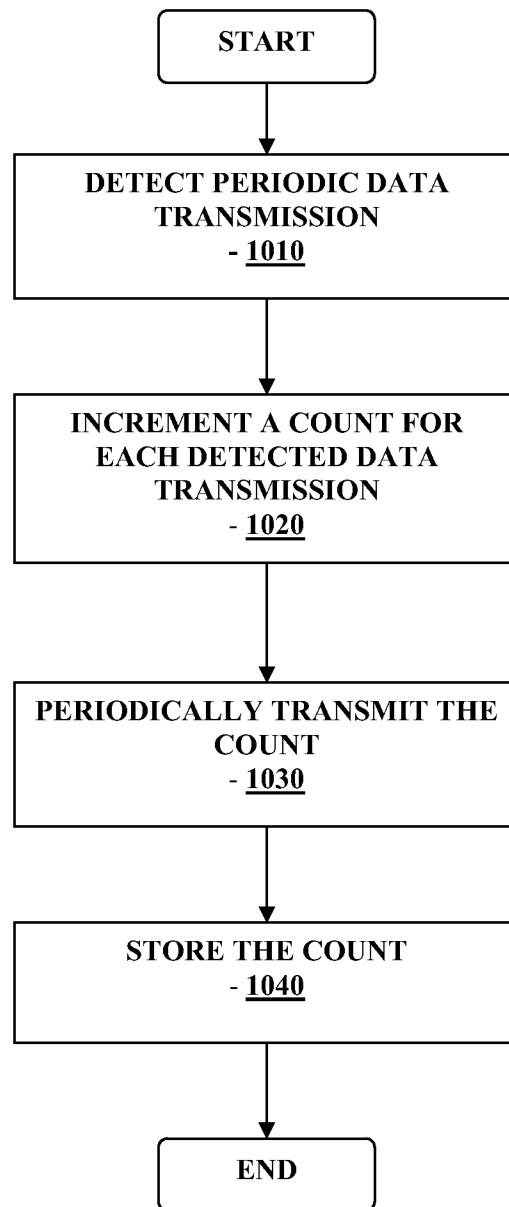


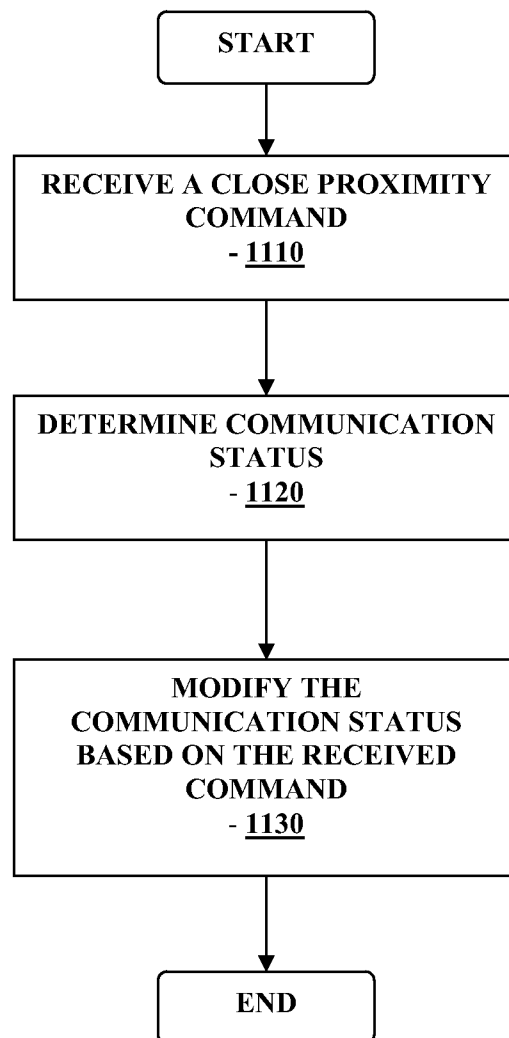
FIGURE 6

**FIGURE 7**

**FIGURE 8**

**FIGURE 9**

**FIGURE 10**

**FIGURE 11**

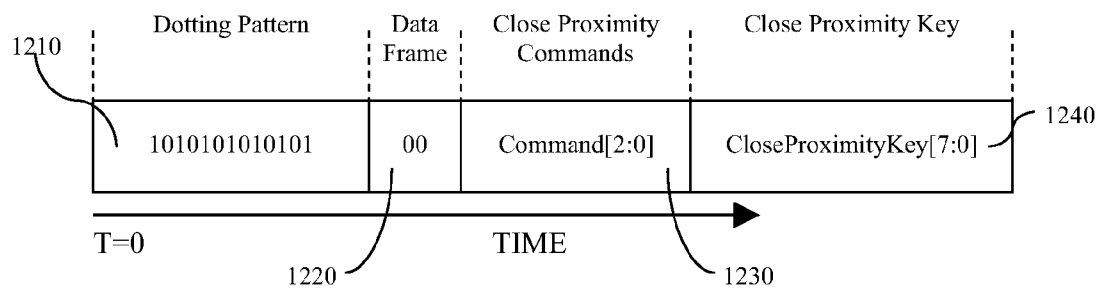


FIGURE 12

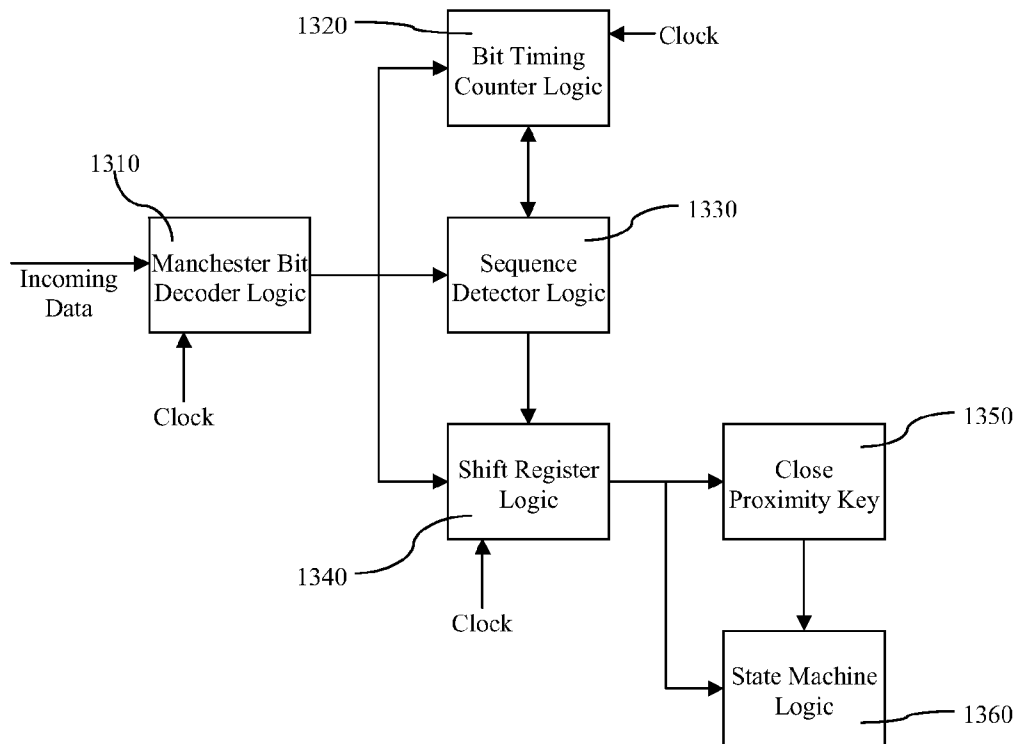
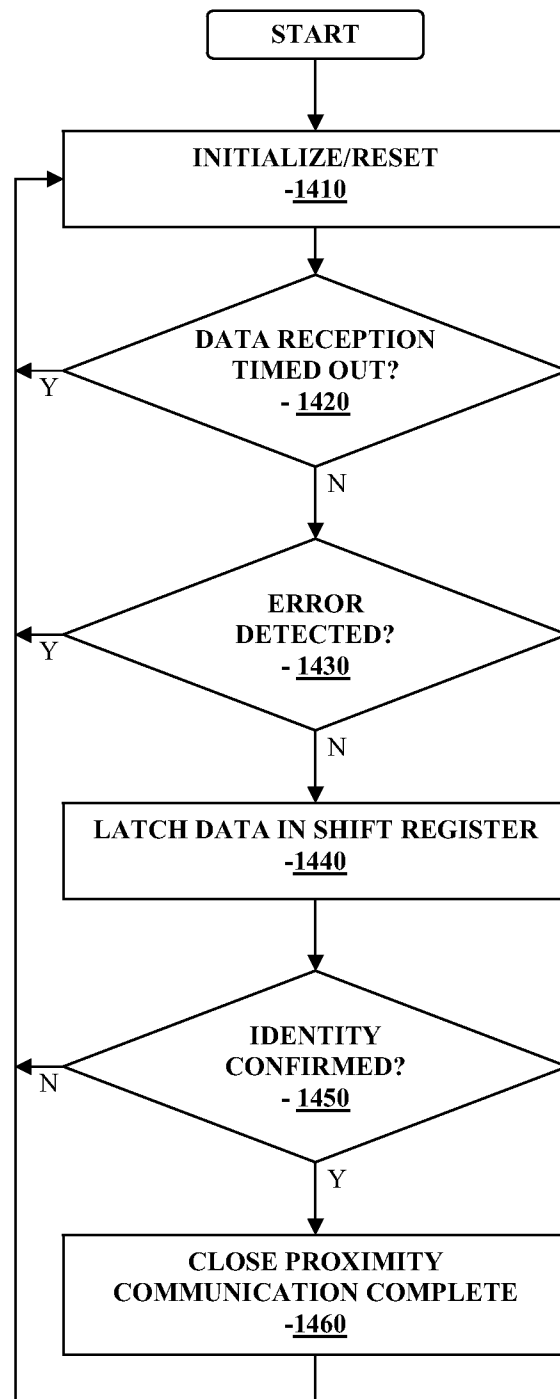


FIGURE 13

**FIGURE 14**

CLOSE PROXIMITY COMMUNICATION DEVICE AND METHODS

RELATED APPLICATIONS

The present application is a continuation of U.S. patent application Ser. No. 12/917,455 filed Nov. 1, 2010, now U.S. Pat. No. 8,509,107, which is a continuation of U.S. patent application Ser. No. 12/130,995 filed May 30, 2008, now U.S. Pat. No. 7,826,382, entitled "Close Proximity Communication Device and Methods", the disclosures of each of which are incorporated herein by reference for all purposes.

BACKGROUND

Analyte, e.g., glucose monitoring systems including continuous and discrete monitoring systems generally include a small, lightweight battery powered and microprocessor controlled system which is configured to detect signals proportional to the corresponding measured glucose levels using an electrometer. RF signals may be used to transmit the collected data. One aspect of certain analyte monitoring systems include a transcutaneous or subcutaneous analyte sensor configuration which is, for example, at least partially positioned through the skin layer of a subject whose analyte level is to be monitored. The sensor may use a two or three-electrode (work, reference and counter electrodes) configuration driven by a controlled potential (potentiostat) analog circuit connected through a contact system.

An analyte sensor may be configured so that a portion thereof is placed under the skin of the patient so as to contact analyte of the patient, and another portion or segment of the analyte sensor may be in communication with the transmitter unit. The transmitter unit may be configured to transmit the analyte levels detected by the sensor over a wireless communication link such as an RF (radio frequency) communication link to a receiver/monitor unit. The receiver/monitor unit may perform data analysis, among other functions, on the received analyte levels to generate information pertaining to the monitored analyte levels.

Transmission of control or command data over wireless communication link is often constrained to occur within a substantially short time duration. In turn, the time constraint in data communication imposes limits on the type and size of data that may be transmitted during the transmission time period.

In view of the foregoing, it would be desirable to have a method and apparatus for optimizing the RF communication link between two or more communication devices, for example, in a medical communication system.

SUMMARY

Devices and methods for analyte monitoring, e.g., glucose monitoring, and/or therapy management system including, for example, medication infusion device are provided. Embodiments include transmitting information from a first location to a second, e.g., using a telemetry system such as RF telemetry. Systems herein include continuous analyte monitoring systems, discrete analyte monitoring systems, and therapy management systems.

These and other objects, features and advantages of the present disclosure will become more fully apparent from the following detailed description of the embodiments, the appended claims and the accompanying drawings.

BRIEF DESCRIPTION OF THE DRAWINGS

FIG. 1 illustrates a block diagram of a data monitoring and management system for practicing one or more embodiments of the present disclosure;

FIG. 2 is a block diagram of the transmitter unit of the data monitoring and management system shown in FIG. 1 in accordance with one embodiment of the present disclosure;

FIG. 3 is a block diagram of the receiver/monitor unit of the data monitoring and management system shown in FIG. 1 in accordance with one embodiment of the present disclosure;

FIG. 4 is a flowchart illustrating data packet procedure including rolling data for transmission in accordance with one embodiment of the present disclosure;

FIG. 5 is a flowchart illustrating data processing of the received data packet including the rolling data in accordance with one embodiment of the present disclosure;

FIG. 6 is a block diagram illustrating the sensor unit and the transmitter unit of the data monitoring and management system of FIG. 1 in accordance with one embodiment of the present disclosure;

FIG. 7 is a flowchart illustrating data communication using close proximity commands in the data monitoring and management system of FIG. 1 in accordance with one embodiment of the present disclosure;

FIG. 8 is a flowchart illustrating the pairing or synchronization routine in the data monitoring and management system of FIG. 1 in accordance with one embodiment of the present disclosure;

FIG. 9 is a flowchart illustrating the pairing or synchronization routine in the data monitoring and management system of FIG. 1 in accordance with another embodiment of the present disclosure;

FIG. 10 is a flowchart illustrating the power supply determination in the data monitoring and management system of FIG. 1 in accordance with one embodiment of the present disclosure;

FIG. 11 is a flowchart illustrating close proximity command for RF communication control in the data monitoring and management system of FIG. 1 in accordance with one embodiment of the present disclosure;

FIG. 12 illustrates a data format of a close proximity data packet sent by a controller, for use in one or more embodiments of the present disclosure;

FIG. 13 is a block diagram representation of a close proximity detection logic of the transmitter unit 620 in one or more embodiments of the present disclosure; and

FIG. 14 is a flow chart illustrating close proximity detection logic in one or more embodiments of the present disclosure.

DETAILED DESCRIPTION

As summarized above and as described in further detail below, in accordance with the various embodiments of the present disclosure, there is provided a method and system for positioning a controller unit within a transmission range for close proximity communication, transmitting one or more predefined close proximity commands, and receiving a response packet in response to the transmitted one or more predefined close proximity commands.

FIG. 1 illustrates a data monitoring and management system such as, for example, analyte (e.g., glucose) monitoring system 100 in accordance with one embodiment of the present disclosure. The subject invention is further described primarily with respect to a glucose monitoring system for convenience and such description is in no way intended to

limit the scope of the invention. It is to be understood that the analyte monitoring system may be configured to monitor a variety of analytes, e.g., lactate, and the like.

Analytes that may be monitored include, for example, acetyl choline, amylase, bilirubin, cholesterol, chorionic gonadotropin, creatine kinase (e.g., CK-MB), creatine, DNA, fructosamine, glucose, glutamine, growth hormones, hormones, ketones, lactate, peroxide, prostate-specific antigen, prothrombin, RNA, thyroid stimulating hormone, and troponin. The concentration of drugs, such as, for example, antibiotics (e.g., gentamicin, vancomycin, and the like), digitoxin, digoxin, drugs of abuse, theophylline, and warfarin, may also be monitored. More than one analyte may be monitored by a single system, e.g. a single analyte sensor.

The analyte monitoring system **100** includes a sensor unit **101**, a transmitter unit **102** coupleable to the sensor unit **101**, and a primary receiver unit **104** which is configured to communicate with the transmitter unit **102** via a bi-directional communication link **103**. The primary receiver unit **104** may be further configured to transmit data to a data processing terminal **105** for evaluating the data received by the primary receiver unit **104**. Moreover, the data processing terminal **105** in one embodiment may be configured to receive data directly from the transmitter unit **102** via a communication link which may optionally be configured for bi-directional communication. Accordingly, transmitter unit **102** and/or receiver unit **104** may include a transceiver.

Also shown in FIG. 1 is an optional secondary receiver unit **106** which is operatively coupled to the communication link and configured to receive data transmitted from the transmitter unit **102**. Moreover, as shown in the Figure, the secondary receiver unit **106** is configured to communicate with the primary receiver unit **104** as well as the data processing terminal **105**. Indeed, the secondary receiver unit **106** may be configured for bi-directional wireless communication with each or one of the primary receiver unit **104** and the data processing terminal **105**. As discussed in further detail below, in one embodiment of the present disclosure, the secondary receiver unit **106** may be configured to include a limited number of functions and features as compared with the primary receiver unit **104**. As such, the secondary receiver unit **106** may be configured substantially in a smaller compact housing or embodied in a device such as a wrist watch, pager, mobile phone, PDA, for example. Alternatively, the secondary receiver unit **106** may be configured with the same or substantially similar functionality as the primary receiver unit **104**. The receiver unit may be configured to be used in conjunction with a docking cradle unit, for example for one or more of the following or other functions: placement by bedside, for re-charging, for data management, for night time monitoring, and/or bi-directional communication device.

In one aspect sensor unit **101** may include two or more sensors, each configured to communicate with transmitter unit **102**. Furthermore, while only one, transmitter unit **102**, communication link **103**, and data processing terminal **105** are shown in the embodiment of the analyte monitoring system **100** illustrated in FIG. 1, it will be appreciated by one of ordinary skill in the art that the analyte monitoring system **100** may include one or more sensors **101**, multiple transmitter units **102**, communication links **103**, and data processing terminals **105**. Moreover, within the scope of the present disclosure, the analyte monitoring system **100** may be a continuous monitoring system, or semi-continuous, or a discrete monitoring system. In a multi-component environment, each device is configured to be uniquely identified by each of the other devices in the system so that communication conflict is

readily resolved between the various components within the analyte monitoring system **100**.

In one embodiment of the present disclosure, the sensor unit **101** is physically positioned in or on the body of a user whose analyte level is being monitored. The sensor unit **101** may be configured to continuously sample the analyte level of the user and convert the sampled analyte level into a corresponding data signal for transmission by the transmitter unit **102**. In certain embodiments, the transmitter unit **102** may be physically coupled to the sensor unit **101** so that both devices are integrated in a single housing and positioned on the user's body. The transmitter unit **102** may perform data processing such as filtering and encoding on data signals and/or other functions, each of which corresponds to a sampled analyte level of the user, and in any event transmitter unit **102** transmits analyte information to the primary receiver unit **104** via the communication link **103**.

In one embodiment, the analyte monitoring system **100** is configured as a one-way RF communication path from the transmitter unit **102** to the primary receiver unit **104**. In such embodiment, the transmitter unit **102** transmits the sampled data signals received from the sensor unit **101** without acknowledgement from the primary receiver unit **104** that the transmitted sampled data signals have been received. For example, the transmitter unit **102** may be configured to transmit the encoded sampled data signals at a fixed rate (e.g., at one minute intervals) after the completion of the initial power on procedure. Likewise, the primary receiver unit **104** may be configured to detect such transmitted encoded sampled data signals at predetermined time intervals. Alternatively, the analyte monitoring system **100** may be configured with a bi-directional RF (or otherwise) communication between the transmitter unit **102** and the primary receiver unit **104**.

Additionally, in one aspect, the primary receiver unit **104** may include two sections. The first section is an analog interface section that is configured to communicate with the transmitter unit **102** via the communication link **103**. In one embodiment, the analog interface section may include an RF receiver and an antenna for receiving and amplifying the data signals from the transmitter unit **102**, which are thereafter, demodulated with a local oscillator and filtered through a band-pass filter. The second section of the primary receiver unit **104** is a data processing section which is configured to process the data signals received from the transmitter unit **102** such as by performing data decoding, error detection and correction, data clock generation, and data bit recovery.

In operation, upon completing the power-on procedure, the primary receiver unit **104** is configured to detect the presence of the transmitter unit **102** within its range based on, for example, the strength of the detected data signals received from the transmitter unit **102** and/or a predetermined transmitter identification information. Upon successful synchronization with the corresponding transmitter unit **102**, the primary receiver unit **104** is configured to begin receiving from the transmitter unit **102** data signals corresponding to the user's detected analyte level. More specifically, the primary receiver unit **104** in one embodiment is configured to perform synchronized time hopping with the corresponding synchronized transmitter unit **102** via the communication link **103** to obtain the user's detected analyte level.

Referring again to FIG. 1, the data processing terminal **105** may include a personal computer, a portable computer such as a laptop or a handheld device (e.g., personal digital assistants (PDAs)), and the like, each of which may be configured for data communication with the receiver via a wired or a wireless connection. Additionally, the data processing terminal **105** may further be connected to a data network (not shown)

5

for storing, retrieving and updating data corresponding to the detected analyte level of the user.

Within the scope of the present disclosure, the data processing terminal **105** may include an infusion device such as an insulin infusion pump (external or implantable) or the like, which may be configured to administer insulin to patients, and which may be configured to communicate with the receiver unit **104** for receiving, among others, the measured analyte level. Alternatively, the receiver unit **104** may be configured to integrate or otherwise couple to an infusion device therein so that the receiver unit **104** is configured to administer insulin therapy to patients, for example, for administering and modifying basal profiles, as well as for determining appropriate boluses for administration based on, among others, the detected analyte levels received from the transmitter unit **102**.

Additionally, the transmitter unit **102**, the primary receiver unit **104** and the data processing terminal **105** may each be configured for bi-directional wireless communication such that each of the transmitter unit **102**, the primary receiver unit **104** and the data processing terminal **105** may be configured to communicate (that is, transmit data to and receive data from) with each other via a wireless communication link. More specifically, the data processing terminal **105** may in one embodiment be configured to receive data directly from the transmitter unit **102** via a communication link, where the communication link, as described above, may be configured for bi-directional communication.

In this embodiment, the data processing terminal **105**, which may include an insulin pump, may be configured to receive the analyte signals from the transmitter unit **102**, and thus, incorporate the functions of the receiver **104** including data processing for managing the patient's insulin therapy and analyte monitoring. In one embodiment, the communication link **103** may include one or more of an RF communication protocol, an infrared communication protocol, a Bluetooth® enabled communication protocol, an 802.11x wireless communication protocol, or an equivalent wireless communication protocol which would allow secure, wireless communication of several units (for example, per HIPAA requirements) while avoiding potential data collision and interference.

FIG. 2 is a block diagram of the transmitter of the data monitoring and detection system shown in FIG. 1 in accordance with one embodiment of the present disclosure. Referring to the Figure, the transmitter unit **102** in one embodiment includes an analog interface **201** configured to communicate with the sensor unit **101** (FIG. 1), a user input **202**, and a temperature detection section **203**, each of which is operatively coupled to a transmitter processor **204** such as a central processing unit (CPU). As can be seen from FIG. 2, there are provided four contacts, three of which are electrodes—work electrode (W) **210**, guard contact (G) **211**, reference electrode (R) **212**, and counter electrode (C) **213**, each operatively coupled to the analog interface **201** of the transmitter unit **102** for connection to the sensor unit **101** (FIG. 1). In one embodiment, each of the work electrode (W) **210**, guard contact (G) **211**, reference electrode (R) **212**, and counter electrode (C) **213** may be made using a conductive material that is either printed or etched or ablated, for example, such as carbon which may be printed, or a metal such as a metal foil (e.g., gold) or the like, which may be etched or ablated or otherwise processed to provide one or more electrodes. Fewer or greater electrodes and/or contact may be provided in certain embodiments.

Further shown in FIG. 2 are a transmitter serial communication section **205** and an RF transmitter **206**, each of which is also operatively coupled to the transmitter processor **204**.

6

Moreover, a power supply **207** such as a battery is also provided in the transmitter unit **102** to provide the necessary power for the transmitter unit **102**. Additionally, as can be seen from the Figure, clock **208** is provided to, among others, supply real time information to the transmitter processor **204**.

In one embodiment, a unidirectional input path is established from the sensor unit **101** (FIG. 1) and/or manufacturing and testing equipment to the analog interface **201** of the transmitter unit **102**, while a unidirectional output is established from the output of the RF transmitter **206** of the transmitter unit **102** for transmission to the primary receiver unit **104**. In this manner, a data path is shown in FIG. 2 between the aforementioned unidirectional input and output via a dedicated link **209** from the analog interface **201** to serial communication section **205**, thereafter to the processor **204**, and then to the RF transmitter **206**. As such, in one embodiment, via the data path described above, the transmitter unit **102** is configured to transmit to the primary receiver unit **104** (FIG. 1), via the communication link **103** (FIG. 1), processed and encoded data signals received from the sensor unit **101** (FIG. 1). Additionally, the unidirectional communication data path between the analog interface **201** and the RF transmitter **206** discussed above allows for the configuration of the transmitter unit **102** for operation upon completion of the manufacturing process as well as for direct communication for diagnostic and testing purposes.

As discussed above, the transmitter processor **204** is configured to transmit control signals to the various sections of the transmitter unit **102** during the operation of the transmitter unit **102**. In one embodiment, the transmitter processor **204** also includes a memory (not shown) for storing data such as the identification information for the transmitter unit **102**, as well as the data signals received from the sensor unit **101**. The stored information may be retrieved and processed for transmission to the primary receiver unit **104** under the control of the transmitter processor **204**. Furthermore, the power supply **207** may include a commercially available battery, which may be a rechargeable battery.

In certain embodiments, the transmitter unit **102** is also configured such that the power supply section **207** is capable of providing power to the transmitter for a minimum of about three months of continuous operation, e.g., after having been stored for about eighteen months such as stored in a low-power (non-operating) mode. In one embodiment, this may be achieved by the transmitter processor **204** operating in low power modes in the non-operating state, for example, drawing no more than approximately 1 μ A of current. Indeed, in one embodiment, a step during the manufacturing process of the transmitter unit **102** may place the transmitter unit **102** in the lower power, non-operating state (i.e., post-manufacture sleep mode). In this manner, the shelf life of the transmitter unit **102** may be significantly improved. Moreover, as shown in FIG. 2, while the power supply unit **207** is shown as coupled to the processor **204**, and as such, the processor **204** is configured to provide control of the power supply unit **207**, it should be noted that within the scope of the present disclosure, the power supply unit **207** is configured to provide the necessary power to each of the components of the transmitter unit **102** shown in FIG. 2.

Referring back to FIG. 2, the power supply section **207** of the transmitter unit **102** in one embodiment may include a rechargeable battery unit that may be recharged by a separate power supply recharging unit (for example, provided in the receiver unit **104**) so that the transmitter unit **102** may be powered for a longer period of usage time. Moreover, in one embodiment, the transmitter unit **102** may be configured

7

without a battery in the power supply section 207, in which case the transmitter unit 102 may be configured to receive power from an external power supply source (for example, a battery) as discussed in further detail below.

Referring yet again to FIG. 2, the temperature detection section 203 of the transmitter unit 102 is configured to monitor the temperature of the skin near the sensor insertion site. The temperature reading is used to adjust the analyte readings obtained from the analog interface 201. In certain embodiments, the RF transmitter 206 of the transmitter unit 102 may be configured for operation in the frequency band of approximately 315 MHz to approximately 322 MHz, for example, in the United States. In certain embodiments, the RF transmitter 206 of the transmitter unit 102 may be configured for operation in the frequency band of approximately 400 MHz to approximately 470 MHz. Further, in one embodiment, the RF transmitter 206 is configured to modulate the carrier frequency by performing Frequency Shift Keying and Manchester encoding. In one embodiment, the data transmission rate is about 19,200 symbols per second, with a minimum transmission range for communication with the primary receiver unit 104.

Referring yet again to FIG. 2, also shown is a leak detection circuit 214 coupled to the guard contact (G) 211 and the processor 204 in the transmitter unit 102 of the data monitoring and management system 100. The leak detection circuit 214 in accordance with one embodiment of the present disclosure may be configured to detect leakage current in the sensor unit 101 to determine whether the measured sensor data is corrupt or whether the measured data from the sensor 101 is accurate. Exemplary analyte systems that may be employed are described in, for example, U.S. Pat. Nos. 6,134,461, 6,175,752, 6,121,611, 6,560,471, 6,746,582, and elsewhere, the disclosure of each of which are incorporated by reference for all purposes.

FIG. 3 is a block diagram of the receiver/monitor unit of the data monitoring and management system shown in FIG. 1 in accordance with one embodiment of the present disclosure. Referring to FIG. 3, the primary receiver unit 104 includes an analyte test strip, e.g., blood glucose test strip, interface 301, an RF receiver 302, an input 303, a temperature detection section 304, and a clock 305, each of which is operatively coupled to a receiver processor 307. As can be further seen from the Figure, the primary receiver unit 104 also includes a power supply 306 operatively coupled to a power conversion and monitoring section 308. Further, the power conversion and monitoring section 308 is also coupled to the receiver processor 307. Moreover, also shown are a receiver serial communication section 309, and an output 310, each operatively coupled to the receiver processor 307.

In one embodiment, the test strip interface 301 includes a glucose level testing portion to receive a manual insertion of a glucose test strip, and thereby determine and display the glucose level of the test strip on the output 310 of the primary receiver unit 104. This manual testing of glucose may be used to calibrate the sensor unit 101 or otherwise. The RF receiver 302 is configured to communicate, via the communication link 103 (FIG. 1) with the RF transmitter 206 of the transmitter unit 102, to receive encoded data signals from the transmitter unit 102 for, among others, signal mixing, demodulation, and other data processing. The input 303 of the primary receiver unit 104 is configured to allow the user to enter information into the primary receiver unit 104 as needed. In one aspect, the input 303 may include one or more keys of a keypad, a touch-sensitive screen, or a voice-activated input command unit. The temperature detection section 304 is configured to provide temperature information of the primary

8

receiver unit 104 to the receiver processor 307, while the clock 305 provides, among others, real time information to the receiver processor 307.

Each of the various components of the primary receiver unit 104 shown in FIG. 3 is powered by the power supply 306 which, in one embodiment, includes a battery. Furthermore, the power conversion and monitoring section 308 is configured to monitor the power usage by the various components in the primary receiver unit 104 for effective power management and to alert the user, for example, in the event of power usage which renders the primary receiver unit 104 in sub-optimal operating conditions. An example of such sub-optimal operating condition may include, for example, operating the vibration output mode (as discussed below) for a period of time thus substantially draining the power supply 306 while the processor 307 (thus, the primary receiver unit 104) is turned on. Moreover, the power conversion and monitoring section 308 may additionally be configured to include a reverse polarity protection circuit such as a field effect transistor (FET) configured as a battery activated switch.

The serial communication section 309 in the primary receiver unit 104 is configured to provide a bi-directional communication path from the testing and/or manufacturing equipment for, among others, initialization, testing, and configuration of the primary receiver unit 104. Serial communication section 309 can also be used to upload data to a computer, such as time-stamped blood glucose data. The communication link with an external device (not shown) can be made, for example, by cable, infrared (IR) or RF link. The output 310 of the primary receiver unit 104 is configured to provide, among others, a graphical user interface (GUI) such as a liquid crystal display (LCD) for displaying information. Additionally, the output 310 may also include an integrated speaker for outputting audible signals as well as to provide vibration output as commonly found in handheld electronic devices, such as mobile telephones presently available. In a further embodiment, the primary receiver unit 104 also includes an electro-luminescent lamp configured to provide backlighting to the output 310 for output visual display in dark ambient surroundings.

Referring back to FIG. 3, the primary receiver unit 104 in one embodiment may also include a storage section such as a programmable, non-volatile memory device as part of the processor 307, or provided separately in the primary receiver unit 104, operatively coupled to the processor 307. The processor 307 may be configured to synchronize with a transmitter, e.g., using Manchester decoding or the like, as well as error detection and correction upon the encoded data signals received from the transmitter unit 102 via the communication link 103.

Additional description of the RF communication between the transmitter 102 and the primary receiver 104 (or with the secondary receiver 106) that may be employed in embodiments of the subject invention is disclosed in pending application Ser. No. 11/060,365 filed Feb. 16, 2005 entitled "Method and System for Providing Data Communication in Continuous Glucose Monitoring and Management System" the disclosure of which is incorporated herein by reference for all purposes.

Referring to the Figures, in one embodiment, the transmitter 102 (FIG. 1) may be configured to generate data packets for periodic transmission to one or more of the receiver units 104, 106, where each data packet includes in one embodiment two categories of data—urgent data and non-urgent data. For example, urgent data such as for example glucose data from the sensor and/or temperature data associated with the sensor

may be packed in each data packet in addition to non-urgent data, where the non-urgent data is rolled or varied with each data packet transmission.

That is, the non-urgent data is transmitted at a timed interval so as to maintain the integrity of the analyte monitoring system without being transmitted over the RF communication link with each data transmission packet from the transmitter **102**. In this manner, the non-urgent data, for example that is not time sensitive, may be periodically transmitted (and not with each data packet transmission) or broken up into predetermined number of segments and sent or transmitted over multiple packets, while the urgent data is transmitted substantially in its entirety with each data transmission.

Referring again to the Figures, upon receiving the data packets from the transmitter **102**, the one or more receiver units **104**, **106** may be configured to parse the received data packet to separate the urgent data from the non-urgent data, and also, may be configured to store the urgent data and the non-urgent data, e.g., in a hierarchical manner. In accordance with the particular configuration of the data packet or the data transmission protocol, more or less data may be transmitted as part of the urgent data, or the non-urgent rolling data. That is, within the scope of the present disclosure, the specific data packet implementation such as the number of bits per packet, and the like, may vary based on, among others, the communication protocol, data transmission time window, and so on.

In an exemplary embodiment, different types of data packets may be identified accordingly. For example, identification in certain exemplary embodiments may include—(1) single sensor, one minute of data, (2) two or multiple sensors, (3) dual sensor, alternate one minute data, and (4) response packet. For single sensor one minute data packet, in one embodiment, the transmitter **102** may be configured to generate the data packet in the manner, or similar to the manner, shown in Table 1 below.

TABLE 1

Single sensor, one minute of data	
Number of Bits	Data Field
8	Transmit Time
14	Sensor1 Current Data
14	Sensor1 Historic Data
8	Transmit Status
12	AUX Counter
12	AUX Thermistor 1
12	AUX Thermistor 2
8	Rolling-Data-1

As shown in Table 1 above, the transmitter data packet in one embodiment may include 8 bits of transmit time data, 14 bits of current sensor data, 14 bits of preceding sensor data, 8 bits of transmitter status data, 12 bits of auxiliary counter data, 12 bits of auxiliary thermistor 1 data, 12 bits of auxiliary thermistor 2 data and 8 bits of rolling data. In one embodiment of the present disclosure, the data packet generated by the transmitter for transmission over the RF communication link may include all or some of the data shown above in Table 1.

Referring back, the 14 bits of the current sensor data provides the real time or current sensor data associated with the detected analyte level, while the 14 bits of the sensor historic or preceding sensor data includes the sensor data associated with the detected analyte level one minute ago. In this manner, in the case where the receiver unit **104**, **106** drops or fails to successfully receive the data packet from the transmitter **102** in the minute by minute transmission, the receiver unit

104, **106** may be able to capture the sensor data of a prior minute transmission from a subsequent minute transmission.

Referring again to Table 1, the Auxiliary data in one embodiment may include one or more of the patient's skin temperature data, a temperature gradient data, reference data, and counter electrode voltage. The transmitter status field may include status data that is configured to indicate corrupt data for the current transmission (for example, if shown as BAD status (as opposed to GOOD status which indicates that the data in the current transmission is not corrupt)). Furthermore, the rolling data field is configured to include the non-urgent data, and in one embodiment, may be associated with the time-hop sequence number. In addition, the Transmitter Time field in one embodiment includes a protocol value that is configured to start at zero and is incremented by one with each data packet. In one aspect, the transmitter time data may be used to synchronize the data transmission window with the receiver unit **104**, **106**, and also, provide an index for the Rolling data field.

In a further embodiment, the transmitter data packet may be configured to provide or transmit analyte sensor data from two or more independent analyte sensors. The sensors may relate to the same or different analyte or property. In such a case, the data packet from the transmitter **102** may be configured to include 14 bits of the current sensor data from both sensors in the embodiment in which 2 sensors are employed. In this case, the data packet does not include the immediately preceding sensor data in the current data packet transmission. Instead, a second analyte sensor data is transmitted with a first analyte sensor data.

TABLE 2

Dual sensor data		
	Number of Bits	Data Field
	8	Transmit Time
	14	Sensor1 Current Data
	14	Sensor2 Current Data
	8	Transmit Status
	12	AUX Counter
	12	AUX Thermistor 1
	12	AUX Thermistor 2
	8	Rolling-Data-1

In a further embodiment, the transmitter data packet may be alternated with each transmission between two analyte sensors, for example, alternating between the data packet shown in Table 3 and Table 4 below.

TABLE 3

Sensor Data Packet Alternate 1		
	Number of Bits	Data Field
	8	Transmitter Time
	14	Sensor1 Current Data
	14	Sensor1 Historic Data
	8	Transmit Status
	12	AUX Counter
	12	AUX Thermistor 1
	12	AUX Thermistor 2
	8	Rolling-Data-1

11

TABLE 4

Sensor Data Packet Alternate 2		
Number of Bits	Data Field	
8	Transmitter Time	
14	Sensor1 Current Data	
14	Sensor2 Current Data	
8	Transmit Status	
12	AUX Counter	
12	AUX Thermistor 1	
12	AUX Thermistor 2	
8	Rolling-Data-1	

As shown above in reference to Tables 3 and 4, the minute by minute data packet transmission from the transmitter **102** (FIG. 1) in one embodiment may alternate between the data packet shown in Table 3 and the data packet shown in Table 4. More specifically, the transmitter **102** may be configured in one embodiment to transmit the current sensor data of the first sensor and the preceding sensor data of the first sensor (Table 3), as well as the rolling data, and further, at the subsequent transmission, the transmitter **102** may be configured to transmit the current sensor data of the first and the second sensor in addition to the rolling data.

In one embodiment, the rolling data transmitted with each data packet may include a sequence of various predetermined types of data that are considered not-urgent or not time sensitive. That is, in one embodiment, the following list of data shown in Table 5 may be sequentially included in the 8 bits of transmitter data packet, and not transmitted with each data packet transmission of the transmitter (for example, with each 60 second data transmission from the transmitter **102**).

TABLE 5

Rolling Data		
Time Slot	Bits	Rolling-Data
0	8	Mode
1	8	Glucose1 Slope
2	8	Glucose2 Slope
3	8	Ref-R
4	8	Hobbs Counter, Ref-R
5	8	Hobbs Counter
6	8	Hobbs Counter
7	8	Sensor Count

As can be seen from Table 5 above, in one embodiment, a sequence of rolling data are appended or added to the transmitter data packet with each data transmission time slot. In one embodiment, there may be 256 time slots for data transmission by the transmitter **102** (FIG. 1), and where, each time slot is separated by approximately 60 second interval. For example, referring to the Table 5 above, the data packet in transmission time slot 0 (zero) may include operational mode data (Mode) as the rolling data that is appended to the transmitted data packet. At the subsequent data transmission time slot (for example, approximately 60 seconds after the initial time slot (0)), the transmitted data packet may include the analyte sensor 1 calibration factor information (Glucose1 slope) as the rolling data. In this manner, with each data transmission, the rolling data may be updated over the 256 time slot cycle.

Referring again to Table 5, each rolling data field is described in further detail for various embodiments. For example, the Mode data may include information related to the different operating modes such as, but not limited to, the data packet type, the type of battery used, diagnostic routines,

12

single sensor or multiple sensor input, or type of data transmission (RF communication link or other data link such as serial connection). Further, the Glucose1-slope data may include an 8-bit scaling factor or calibration data for first sensor (scaling factor for sensor 1 data), while Glucose2-slope data may include an 8-bit scaling factor or calibration data for the second analyte sensor (in the embodiment including more than one analyte sensors).

In addition, the Ref-R data may include 12 bits of on-board reference resistor used to calibrate our temperature measurement in the thermistor circuit (where 8 bits are transmitted in time slot 3, and the remaining 4 bits are transmitted in time slot 4), and the 20-bit Hobbs counter data may be separately transmitted in three time slots (for example, in time slot 4, time slot 5 and time slot 6) to add up to 20 bits. In one embodiment, the Hobbs counter may be configured to count each occurrence of the data transmission (for example, a packet transmission at approximately 60 second intervals) and may be incremented by a count of one (1).

In one aspect, the Hobbs counter is stored in a nonvolatile memory of the transmitter unit **102** (FIG. 1) and may be used to ascertain the power supply status information such as, for example, the estimated battery life remaining in the transmitter unit **102**. That is, with each sensor replacement, the Hobbs counter is not reset, but rather, continues the count with each replacement of the sensor unit **101** to establish contact with the transmitter unit **102** such that, over an extended usage time period of the transmitter unit **102**, it may be possible to determine, based on the Hobbs count information, the amount of consumed battery life in the transmitter unit **102**, and also, an estimated remaining life of the battery in the transmitter unit **102**.

That is, in one embodiment, the 20 bit Hobbs counter is incremented by one each time the transmitter unit **102** transmits a data packet (for example, approximately each 60 seconds), and based on the count information in the Hobbs counter, in one aspect, the battery life of the transmitter unit **102** may be estimated. In this manner, in configurations of the transmitter unit **620** (see FIG. 6) where the power supply is not a replaceable component but rather, embedded within the housing of the transmitter unit **620**, it is possible to estimate the remaining life of the embedded battery within the transmitter unit **620**. Moreover, the Hobbs counter is configured to remain persistent in the memory device of the transmitter unit **620** such that, even when the transmitter unit power is turned off or powered down (for example, during the periodic sensor unit replacement, RF transmission turned off period and the like), the Hobbs counter information is retained.

Referring to Table 5 above, the transmitted rolling data may also include 8 bits of sensor count information (for example, transmitted in time slot 7). The 8 bit sensor counter is incremented by one each time a new sensor unit is connected to the transmitter unit. The ASIC configuration of the transmitter unit (or a microprocessor based transmitter configuration or with discrete components) may be configured to store in a nonvolatile memory unit the sensor count information and transmit it to the primary receiver unit **104** (for example). In turn, the primary receiver unit **104** (and/or the secondary receiver unit **106**) may be configured to determine whether it is receiving data from the transmitter unit that is associated with the same sensor unit (based on the sensor count information), or from a new or replaced sensor unit (which will have a sensor count incremented by one from the prior sensor count). In this manner, in one aspect, the receiver unit (primary or secondary) may be configured to prevent reuse of the same sensor unit by the user based on verifying the sensor count information associated with the data trans-

13

mission received from the transmitter unit 102. In addition, in a further aspect, user notification may be associated with one or more of these parameters. Further, the receiver unit (primary or secondary) may be configured to detect when a new sensor has been inserted, and thus prevent erroneous application of one or more calibration parameters determined in conjunction with a prior sensor, that may potentially result in false or inaccurate analyte level determination based on the sensor data.

FIG. 4 is a flowchart illustrating a data packet procedure including rolling data for transmission in accordance with one embodiment of the present disclosure. Referring to FIG. 4, in one embodiment, a counter is initialized (for example, to T=0) (410). Thereafter the associated rolling data is retrieved from memory device, for example (420), and also, the time sensitive or urgent data is retrieved (430). In one embodiment, the retrieval of the rolling data (420) and the retrieval of the time sensitive data (430) may be retrieved at substantially the same time.

Referring back to FIG. 4, with the rolling data and the time sensitive data, for example, the data packet for transmission is generated (440), and upon transmission, the counter is incremented by one (450) and the routine returns to retrieval of the rolling data (420). In this manner, in one embodiment, the urgent time sensitive data as well as the non-urgent data may be incorporated in the same data packet and transmitted by the transmitter 102 (FIG. 1) to a remote device such as one or more of the receivers 104, 106. Furthermore, as discussed above, the rolling data may be updated at a predetermined time interval which is longer than the time interval for each data packet transmission from the transmitter 102 (FIG. 1).

FIG. 5 is a flowchart illustrating data processing of the received data packet including the rolling data in accordance with one embodiment of the present disclosure. Referring to FIG. 5, when the data packet is received (510) (for example, by one or more of the receivers 104, 106, in one embodiment) the received data packet is parsed so that the urgent data may be separated from the not-urgent data (stored in, for example, the rolling data field in the data packet) (520). Thereafter the parsed data is suitably stored in an appropriate memory or storage device (530).

In the manner described above, in accordance with one embodiment of the present disclosure, there is provided method and apparatus for separating non-urgent type data (for example, data associated with calibration) from urgent type data (for example, monitored analyte related data) to be transmitted over the communication link to minimize the potential burden or constraint on the available transmission time. More specifically, in one embodiment, non-urgent data may be separated from data that is required by the communication system to be transmitted immediately, and transmitted over the communication link together while maintaining a minimum transmission time window. In one embodiment, the non-urgent data may be parsed or broken up into a number of data segments, and transmitted over multiple data packets. The time sensitive immediate data (for example, the analyte sensor data, temperature data, etc.), may be transmitted over the communication link substantially in its entirety with each data packet or transmission.

FIG. 6 is a block diagram illustrating the sensor unit and the transmitter unit of the data monitoring and management system of FIG. 1 in accordance with one embodiment of the present disclosure. Referring to FIG. 6, in one aspect, a transmitter unit 620 is provided in a substantially water tight and sealed housing. The transmitter unit 620 includes respective contacts (wrk, ref, cntr, and grd) for respectively establishing electrical contact with one or more of the working electrode,

14

the reference electrode, the counter electrode and the ground terminal (or guard trace) of the sensor unit 610. Also shown in FIG. 6 is a conductivity bar/trace 611 provided on the sensor unit 610. For example, in one embodiment, the conductivity bar/trace 611 may comprise a carbon trace on a substrate layer of the sensor unit 610. In this manner, in one embodiment, when the sensor unit 610 is coupled to the transmitter unit 620, electrical contact is established, for example, via the conductivity bar/trace 611 between the contact pads or points of the transmitter unit 620 (for example, at the counter electrode contact (cntr) and the ground terminal contact (grd)) such that the transmitter unit 620 may be powered for data communication.

That is, during manufacturing of the transmitter unit 620, in one aspect, the transmitter unit 620 is configured to include a power supply such as battery 621. Further, during the initial non-use period (e.g., post manufacturing sleep mode), the transmitter unit 620 is configured such that it is not used and thus drained by the components of the transmitter unit 620. During the sleep mode, and prior to establishing electrical contact with the sensor unit 610 via the conductivity bar/trace 611, the transmitter unit 620 is provided with a low power signal from, for example, a low power voltage comparator 622, via an electronic switch 623 to maintain the low power state of, for example, the transmitter unit 620 components. Thereafter, upon connection with the sensor unit 610, and establishing electrical contact via the conductivity bar/trace 611, the embedded power supply 621 of the transmitter unit 620 is activated or powered up so that some or all of the components of the transmitter unit 620 are configured to receive the necessary power signals for operations related to, for example, data communication, processing and/or storage.

In one aspect, since the transmitter unit 620 is configured to a sealed housing without a separate replaceable battery compartment, in this manner, the power supply of the battery 621 is preserved during the post manufacturing sleep mode prior to use.

In a further aspect, the transmitter unit 620 may be disposed or positioned on a separate on-body mounting unit that may include, for example, an adhesive layer (on its bottom surface) to firmly retain the mounting unit on the skin of the user, and which is configured to receive or firmly position the transmitter unit 620 on the mounting unit during use. In one aspect, the mounting unit may be configured to at least partially retain the position of the sensor unit 610 in a transcutaneous manner so that at least a portion of the sensor unit is in fluid contact with the analyte of the user. Example embodiments of the mounting or base unit and its cooperation or coupling with the transmitter unit are provided, for example, in U.S. Pat. No. 6,175,752, incorporated herein by reference for all purposes.

In such a configuration, the power supply for the transmitter unit 620 may be provided within the housing of the mounting unit such that, the transmitter unit 620 may be configured to be powered on or activated upon placement of the transmitter unit 620 on the mounting unit and in electrical contact with the sensor unit 610. For example, the sensor unit 610 may be provided pre-configured or integrated with the mounting unit and the insertion device such that, the user may position the sensor unit 610 on the skin layer of the user using the insertion device coupled to the mounting unit. Thereafter, upon transcutaneous positioning of the sensor unit 610, the insertion device may be discarded or removed from the mounting unit, leaving behind the transcutaneously positioned sensor unit 610 and the mounting unit on the skin surface of the user.

15

Thereafter, when the transmitter unit **620** is positioned on, over or within the mounting unit, the battery or power supply provided within the mounting unit is configured to electrically couple to the transmitter unit **620** and/or the sensor unit **610**. Given that the sensor unit **610** and the mounting unit are provided as replaceable components for replacement every 3, 5, 7 days or other predetermined time periods, the user is conveniently not burdened with verifying the status of the power supply providing power to the transmitter unit **620** during use. That is, with the power supply or battery replaced with each replacement of the sensor unit **610**, a new power supply or battery will be provided with the new mounting unit for use with the transmitter unit **620**.

Referring to FIG. 6 again, in one aspect, when the sensor unit **610** is removed from the transmitter unit **620** (or vice versa), the electrical contact is broken and the conductivity bar/trace **611** returns to an open circuit. In this case, the transmitter unit **620** may be configured, to detect such condition and generate a last gasp transmission sent to the primary receiver unit **104** (and/or the secondary receiver unit **106**) indicating that the sensor unit **610** is disconnected from the transmitter unit **620**, and that the transmitter unit **620** is entering a powered down (or low power off) state. And the transmitter unit **620** is powered down into the sleep mode since the connection to the power supply (that is embedded within the transmitter unit **620** housing) is broken.

In this manner, in one aspect, the processor **624** of the transmitter unit **620** may be configured to generate the appropriate one or more data or signals associated with the detection of sensor unit **610** disconnection for transmission to the receiver unit **104** (FIG. 1), and also, to initiate the power down procedure of the transmitter unit **620**. In one aspect, the components of the transmitter unit **620** may be configured to include application specific integrated circuit (ASIC) design with one or more state machines and one or more nonvolatile and/or volatile memory units such as, for example, EEPROMs and the like.

Referring again to FIGS. 1 and 6, in one embodiment, the communication between the transmitter unit **620** (or **102** of FIG. 1) and the primary receiver unit **104** (and/or the secondary receiver unit **106**) may be based on close proximity communication where bi-directional (or uni-directional) wireless communication is established when the devices are physically located in close proximity to each other. That is, in one embodiment, the transmitter unit **620** may be configured to receive very short range commands from the primary receiver unit **104** (FIG. 1) and perform one or more specific operations based on the received commands from the receiver unit **104**.

In one embodiment, to maintain secure communication between the transmitter unit and the data receiver unit, the transmitter unit ASIC may be configured to generate a unique close proximity key at power on or initialization. In one aspect, the 4 or 8 bit key may be generated based on, for example, the transmitter unit identification information, and which may be used to prevent undesirable or unintended communication. In a further aspect, the close proximity key may be generated by the receiver unit based on, for example, the transmitter identification information received by the transmitter unit during the initial synchronization or pairing procedure of the transmitter and the receiver units.

Referring again to FIGS. 1 and 6, in one embodiment, the transmitter unit ASIC configuration may include a 32 KHz oscillator and a counter which may be configured to drive the state machine in the transmitter unit ASIC. The transmitter ASIC configuration may include a plurality of close proximity communication commands including, for example, new sensor initiation, pairing with the receiver unit, and RF com-

16

munication control, among others. For example, when a new sensor unit is positioned and coupled to the transmitter unit so that the transmitter unit is powered on, the transmitter unit is configured to detect or receive a command from the receiver unit positioned in close proximity to the transmitter unit. For example, the receiver unit may be positioned within a couple of inches from the on-body position of the transmitter unit, and when the user activates or initiates a command associated with the new sensor initiation from the receiver unit, the transmitter unit is configured to receive the command from the receiver and, in its response data packet, transmit, among others, its identification information back to the receiver unit.

In one embodiment, the initial sensor unit initiation command does not require the use of the close proximity key. However, other predefined or preconfigured close-proximity commands may be configured to require the use of the 8 bit key (or a key of a different number of bits). For example, in one embodiment, the receiver unit may be configured to transmit an RF on/off command to turn on/off the RF communication module or unit in the transmitter unit **102**. Such RF on/off command in one embodiment includes the close proximity key as part of the transmitted command for reception by the transmitter unit.

During the period that the RF communication module or unit is turned off based on the received close proximity command, the transmitter unit does not transmit any data, including any glucose related data. In one embodiment, the glucose related data from the sensor unit which is not transmitted by the transmitter unit during the time period when the RF communication module or unit of the transmitter unit is turned off may be stored in a memory or storage unit of the transmitter unit for subsequent transmission to the receiver unit when the transmitter unit RF communication module or unit is turned back on based on the RF-on command from the receiver unit. In this manner, in one embodiment, the transmitter unit may be powered down (temporarily, for example, during air travel) without removing the transmitter unit from the on-body position.

FIG. 7 is a flowchart illustrating data communication using close proximity commands in the data monitoring and management system of FIG. 1 in accordance with one embodiment of the present disclosure. Referring to FIG. 7, the primary receiver unit **104** (FIG. 1) in one aspect may be configured to retrieve or generate a close proximity command (**710**) for transmission to the transmitter unit **102**. To establish the transmission range (**720**), the primary receiver unit **104** may be positioned physically close to (that is, within a predetermined distance from) the transmitter unit **102**. For example, the transmission range for the close proximity communication may be established at approximately one foot distance or less between the transmitter unit **102** and the primary receiver unit **104**. When the transmitter unit **102** and the primary receiver unit **104** are within the transmission range, the close proximity command, upon initiation from the receiver unit **104** may be transmitted to the transmitter unit **102** (**730**).

Referring back to FIG. 7, in response to the transmitted close proximity command, a response data packet or other responsive communication may be received (**740**). In one aspect, the response data packet or other responsive communication may include identification information of the transmitter unit **102** transmitting the response data packet or other response communication to the receiver unit **104**. In one aspect, the receiver unit **104** may be configured to generate a key (for example, an 8 bit key or a key of a predetermined length) based on the transmitter identification information

17

(750), and which may be used in subsequent close proximity communication between the transmitter unit **102** and the receiver unit **104**.

In one aspect, the data communication including the generated key may allow the recipient of the data communication to recognize the sender of the data communication and confirm that the sender of the data communication is the intended data sending device, and thus, including data which is desired or anticipated by the recipient of the data communication. In this manner, in one embodiment, one or more close proximity commands may be configured to include the generated key as part of the transmitted data packet. Moreover, the generated key may be based on the transmitter ID or other suitable unique information so that the receiver unit **104** may use such information for purposes of generating the unique key for the bi-directional communication between the devices.

While the description above includes generating the key based on the transmitter unit **102** identification information, within the scope of the present disclosure, the key may be generated based on one or more other information associated with the transmitter unit **102**, and/or the receiver unit combination. In a further embodiment, the key may be encrypted and stored in a memory unit or storage device in the transmitter unit **102** for transmission to the receiver unit **104**.

FIG. **8** is a flowchart illustrating the pairing or synchronization routine in the data monitoring and management system of FIG. **1** in accordance with one embodiment of the present disclosure. Referring to FIG. **8**, in one embodiment, the transmitter unit **102** may be configured to receive a sensor initiate close proximity command (**810**) from the receiver unit **104** positioned within the close transmission range. Based on the received sensor initiate command, the transmitter unit identification information may be retrieved (for example, from a nonvolatile memory) and transmitted (**820**) to the receiver unit **104** or the sender of the sensor initiate command.

Referring back to FIG. **8**, a communication key (**830**) optionally encrypted is received in one embodiment, and thereafter, sensor related data is transmitted with the communication key on a periodic basis such as, every 60 seconds, five minutes, or any suitable predetermined time intervals (**840**).

Referring now to FIG. **9**, a flowchart illustrating the pairing or synchronization routine in the data monitoring and management system of FIG. **1** in accordance with another embodiment of the present disclosure is shown. That is, in one aspect, FIG. **9** illustrates the pairing or synchronization routine from the receiver unit **104**. Referring back to FIG. **9**, the sensor initiate command is transmitted to the transmitter unit **102** (**910**) when the receiver unit **104** is positioned within a close transmission range. Thereafter, in one aspect, the transmitter identification information is received (**920**) for example, from the transmitter unit that received the sensor initiate command. Thereafter, a communication key (optionally encrypted) may be generated and transmitted (**930**) to the transmitter unit.

In the manner described above, in one embodiment, a simplified pairing or synchronization between the transmitter unit **102** and the receiver unit **104** may be established using, for example, close proximity commands between the devices. As described above, in one aspect, upon pairing or synchronization, the transmitter unit **102** may be configured to periodically transmit analyte level information to the receiver unit for further processing.

FIG. **10** is a flowchart illustrating the power supply determination in the data monitoring and management system of FIG. **1** in accordance with one embodiment of the present disclosure. That is, in one embodiment, using a counter, the

18

receiver unit **104** may be configured to determine the power supply level of the transmitter unit **102** battery so as to determine a suitable time for replacement of the power supply or the transmitter unit **102** itself. Referring to FIG. **10**, periodic data transmission is detected (**1010**), and a corresponding count in the counter is incremented for example, by one with each detected data transmission (**1020**). In particular, a Hobbs counter may be used in the rolling data configuration described above to provide a count that is associated with the transmitter unit data transmission occurrence.

Referring to FIG. **10**, the updated or incremented count stored in the Hobbs counter is periodically transmitted in the data packet from the transmitter unit **102** to the receiver unit **104** (**1030**). Moreover, the incremented or updated count may be stored (**1040**) in a persistent nonvolatile memory unit of the transmitter unit **102**. Accordingly, based on the number of data transmission occurrences, the battery power supply level may be estimated, and in turn, which may provide an indication as to when the battery (and thus the transmitter unit in the embodiment where the power supply is manufactured to be embedded within the transmitter unit housing) needs to be replaced.

Moreover, in one aspect, the incremented count in the Hobbs counter is stored in a persistent nonvolatile memory such that, the counter is not reset or otherwise restarted with each sensor unit replacement.

FIG. **11** is a flowchart illustrating close proximity command for RF communication control in the data monitoring and management system of FIG. **1** in accordance with one embodiment of the present disclosure. Referring to FIG. **11**, a close proximity command associated with communication status, for example is received (**1110**). In one aspect, the command associated with the communication status may include, for example, a communication module turn on or turn off command for, for example, turning on or turning off the associated RF communication device of the transmitter unit **102**. Referring to FIG. **11**, the communication status is determined (**1120**), and thereafter, modified based on the received command (**1130**).

That is, in one aspect, using one or more close proximity commands, the receiver unit **104** may be configured to control the RF communication of the transmitter unit **102** to, for example, disable or turn off the RF communication functionality for a predetermined time period. This may be particularly useful when used in air travel or other locations such as hospital settings, where RF communication devices need to be disabled. In one aspect, the close proximity command may be used to either turn on or turn off the RF communication module of the transmitter unit **102**, such that, when the receiver unit **104** is positioned in close proximity to the transmitter unit **102**, and the RF command is transmitted, the transmitter unit **102** is configured, in one embodiment, to either turn off or turn on the RF communication capability of the transmitter unit **102**.

FIG. **12** illustrates a data format of a close proximity data packet sent by a controller such as the receiver unit **104/106** to the transmitter unit **620** (FIG. **6**) in the analyte monitoring system **100** (FIG. **1**). Referring to FIG. **12**, in one embodiment, a close proximity data packet sent by the controller may include 24 bits of data. In one aspect, the 24 bit data packet may include a dotting pattern **1210**, a data frame **1220**, one or more close proximity commands **1230**, and a close proximity key **1240**. As discussed in further detail below, in one embodiment, a sequence detector **1330** (FIG. **13**) in the transmitter unit **620** ASIC logic uses the dotting pattern **1210** and the data frame **1220** to determine whether the incoming data is a proper close proximity data packet. In one aspect, the close

proximity data packet as shown in FIG. 12 may include dotting pattern 1210 which may be used by the close proximity detector logic to detect and synchronize the received data, the data frame 1220 that includes bit pattern prior to the actual received data, the close proximity commands 1230, and close proximity key 1240 to validate the close proximity communication.

In one aspect, there may be five valid close proximity commands 1230 and the close proximity key 1240 may be used as a validation for the communication received from the controller (receiver unit 104/106) for example. While a 24 bit data packet for the close proximity command and five valid close proximity commands 1230 are described above, within the scope of the present disclosure, the data packet for the close proximity commands may include greater or less number of bits within the data packet, and further, the number of valid close proximity commands may be greater or fewer than five valid close proximity commands as described above.

FIG. 13 is a block diagram representation of a close proximity detection logic of the transmitter unit 620 in one or more embodiments of the present disclosure. Referring to FIG. 13, in one embodiment, incoming Manchester encoded data packet, for example, from the controller (receiver unit 104/106) is received at a rate of approximately 4.8 Kbits/second by the close proximity detector logic and decoded by a Manchester bit decoder logic 1310. The Manchester bit decoder logic 1310 detects the two data symbols and may be configured to convert the detected data to one data bit at 2.4 Kbits/sec.

In one aspect, the decoded data bit is sent to a bit timing counter logic 1320, a sequence detector logic 1330, and the shift register logic 1340. In one embodiment, the sequence detector logic 1330 looks for a predetermined data pattern showing the authenticity of the received data packet. In one aspect, the predetermined data pattern, for example '0100', includes an occurrence of a dotting pattern '01' and a data frame '00'. If only a partial sequence is detected followed by an incorrect data bit, the sequence detector logic 1330 may be configured to reset and wait for the next data packet. On the other hand, if the correct data packet is received with the expected or anticipated predetermined data pattern, for example, a '0100', then the sequence detector logic 1330 deems the data packet to be valid.

When the data packet is determined to have the correct dotting pattern and data frame, and is deemed to be valid, a reset signal is disabled and a shift register signal is enabled. With a shift register signal enabled, each incoming bit of validated data is latched into an 11 bit envelope detector shift register logic 1340. Once the 11th bit is latched into the register 1340, an on/off keying (OOK) signal indicates that close proximity communication has been completed. Once a close proximity command is sent and decoded, an envelope detect finite state machine (FSM) logic 1360 is configured to process the command. During the processing period, no further commands are accepted, and the close proximity state machine logic 1360 is locked in a final state. Once the command has been processed, the close proximity logic is reset by a logic reset signal. The close proximity logic then returns to its initial state and awaits further instructions.

Referring again to FIG. 13, a close proximity key 1350 may be used in conjunction with the close proximity command data packet to determine or confirm the identity of the close proximity command issuing device, such as, for example, the controller (receiver unit 104/106). For example, in one aspect, each transmitter unit 102, 620 (FIGS. 1, 6) may have a unique key based on, for example, the device serial or identification number. This value may be latched or stored, and provided to

the close proximity logic, and when a close proximity communication is completed, the received key value as part of the close proximity command data packet is compared to the latched unique key. If the two values match, a signal corresponding to a key match is set high, indicating that the close proximity command received is intended for the transmitter unit that received the command.

Referring again to FIG. 13, a time out signal in conjunction with a bit timing counter 1320 may be used to determine whether transmission errors may have occurred. For example, each time a valid data bit is received by the close proximity logic of the transmitter unit 102/620, a time out signal is generated by the bit timing counter logic 1320. In one aspect, the time period between each time out signal is compared by the bit timing counter logic 1320, and if it is determined that the time period is greater than a predetermined time period based on the data bit time (for example, approximately 1.75 times the data bit time), then it is determined that the data transmission is in error. If it is determined that the transmission is in error, the state machine logic 1360 may be configured to reset the shift register logic 1340, sequence detector logic 1330, and the bit timer logic 1320. On the other hand, when it is determined that the data transmission is not in error, that is, when the time period between each time out signal compared by the bit timing counter logic 1320 is below the predetermined time period, then the data bit associated with the current data communication is considered valid.

Referring still to FIG. 13, a clock signal is provided to the Manchester bit decoder logic 1310, the bit timing counter logic 1320 and the shift register logic 1340 to, among others, synchronize the operation of the various routines executed by the components of the close proximity detector logic in the transmitter unit of the analyte monitoring system. Additionally, in the manner described, the close proximity detector logic may be configured to use small logic blocks running at a relatively slower clock rate, resulting in, for example, reduction in the required ASIC resources and/or power consumption. Furthermore, the embodiments of the close proximity detector logic described above provides a standalone continuous OOK detection without the use of a microcontroller that requires relatively more power and ASIC resources (for example, ASIC area).

Indeed, in accordance with embodiments of the present disclosure, the transmitted OOK data packets from the receiver unit (104/106) may be decoded in conjunction with the received close proximity commands using, for example, one or more of a Manchester decode block logic, error detection logics and a command decoder logic. Furthermore, while Manchester decoder logic is described above, within the scope of the present disclosure, other data encoding/decoding techniques may be used, for example, other binary phase-shift keying (BPSK).

FIG. 14 is a flow chart illustrating close proximity detection logic in one or more embodiments of the present disclosure. Referring to FIGS. 13 and 14, when a close proximity communication mode is activated in a data communication system for example, in the analyte monitoring system 100 (FIG. 1), the close proximity detector logic may be configured to continuously monitor to detect an incoming command or data signal. When the close proximity logic activated, an initial initialization occurs (1410) to clear data bits to ensure no incorrect signals are sent to the close proximity logic. The close proximity detector logic waits to receive one or more data packet (1420). As discussed above, the Manchester encoded data packets may be received at a rate of 4.8 Kbits/sec. When data is not received, the logic may time out and return to the initialization state (1410).

On the other hand, when the data packet is received, error correction is performed to determine the validity of the received data packet (1430). For example, as discussed above, the sequence detection logic may be configured to analyze the dotting pattern and the data frame of the received data packet to determine whether the data packet is valid. If it is determined that the analyzed dotting pattern and the data frame results in the detection of a particular sequence in the data pattern, then in one aspect, the routine may return to the reset/initialization state (1410). However, when it is determined that the received data packet is valid, the data packet is latched (1440), for example, in the shift register as discussed above. Indeed, when the 11th bit in the data packet is received, in one aspect, it is determined that the close proximity communication is completed (1460).

Referring to FIGS. 13 and 14, the close proximity key is compared to confirm that the command received is intended for the transmitter device receiving the command (1450). For example, as discussed above in conjunction with FIG. 13, the data packet received may include a unique transmitter identification information (such as a serial number or other unique information). This information may be compared with a stored value to determine whether the information received matches the value stored. If it is determined that the close proximity key does not match, in one aspect, the routine returns to the initialization/reset state (1410), as the received data packet is not intended for the device that received the packet. On the other hand, if the closed proximity key matches the stored information or unique value, in one aspect, the state machine logic may be configured to generate the OOK signal confirming the receipt of the valid close proximity communication, and the state machine logic may be configured to perform the requested function or execute the one or more routines associated with the received close proximity command.

In this manner, embodiments of the present disclosure provide method and apparatus for optimizing power consumption and ASIC resources in communication devices such as transmitter unit 620 of the analyte monitoring system described above, or on-body patch pump for infusing medication such as insulin, or other therapeutic agents.

It is to be noted that while exemplary embodiments described above include configurations that have specific data packet size, transmission rate, size of the shift register, error correction techniques, and the like, within the scope of the present disclosure, other suitable variations are fully contemplated.

A method in one aspect includes receiving an encoded data packet including one or more error detection bits, one or more close proximity commands, and a communication identifier, decoding the received data packet, performing error detection based on the one or more error detection bits, validating the decoded received data packet, and executing one or more routines associated with the respective one or more close proximity commands when the decoded received data packet is validated, where the executed one or more routines includes transmitting analyte related data.

The received data packet may be Manchester encoded.

The one or more error detection bits may include a predetermined bit pattern such as a dotting pattern, for example.

In a further aspect, decoding the received data packet may include performing Manchester decoding.

Also, validating the decoded received data packet may include comparing the received communication identifier in the data packet with a stored value.

The communication identifier may include a device identification information.

The one or more routines may be associated with the operation of an analyte monitoring device.

The executed one or more routines may include a power on routine, a power off routine, data transfer initiation routine, or data transfer disable routine.

The analyte related data may include a monitored analyte level, such as glucose level.

In a further aspect, the method may include storing the received data packet.

A method in accordance with another embodiment includes receiving an encoded data packet including a close proximity command and a communication identifier, decoding the received data packet, validating the decoded received data packet, and executing one or more routines associated with the respective one or more close proximity commands when the decoded received data packet is validated.

In one aspect, validating the decoded received data packet may include comparing the received communication identifier in the data packet with a stored value.

Further, validating the decoded received data packet may include performing error detection on the data packet, including, for example, comparing one or more data pattern in the received data packet.

The communication identifier may include a device identification information.

The one or more routines may be associated with the operation of an analyte monitoring device.

The executed one or more routines may include a power on routine, a power off routine, data transfer initiation routine, or data transfer disable routine.

In still another aspect, the method may include receiving a signal associated with an analyte level, where the analyte includes glucose.

Also, the decoded received data packet may be stored in, for example, a memory, storage device, or the like.

An apparatus in accordance with still another embodiment includes a communication interface, one or more processors coupled to the communication interface, and a memory for storing instructions which, when executed by the one or more processors, causes the one or more processors to receive an encoded data packet including one or more error detection bits, one or more close proximity commands, and a communication identifier over the communication interface, decode the received data packet, perform error detection based on the one or more error detection bits, validate the decoded received data packet, and execute one or more routines associated with the respective one or more close proximity commands when the decoded received data packet is validated, wherein the executed one or more routines includes transmitting analyte related data.

The memory for storing instructions which, when executed by the one or more processors, may cause the one or more processors to Manchester decode the received data packet.

The one or more error detection bits may include a predetermined bit pattern including, for example, a dotting pattern.

The memory for storing instructions which, when executed by the one or more processors, may cause the one or more processors to Manchester decode the received data packet.

The memory for storing instructions which, when executed by the one or more processors, may cause the one or more processors to compare the received communication identifier in the data packet with a stored value to validate the received data packet.

The memory for storing instructions which, when executed by the one or more processors, may cause the one or more processors to store the received data packet in the memory.

23

The one or more processors may include an application specific integrated circuit (ASIC).

In the manner described, in accordance with embodiments of the present disclosure, the close proximity detector logic may be configured to use small logic blocks running at a relatively slower clock rate, resulting in, for example, reduction in the required ASIC area and power consumption. Furthermore, the embodiments of the close proximity detector logic described above provides a standalone continuous OOK detection without the use of a microcontroller that requires relatively more power and ASIC resources.

Various other modifications and alterations in the structure and method of operation of this invention will be apparent to those skilled in the art without departing from the scope and spirit of the invention. Although the invention has been described in connection with specific preferred embodiments, it should be understood that the invention as claimed should not be unduly limited to such specific embodiments. It is intended that the following claims define the scope of the present disclosure and that structures and methods within the scope of these claims and their equivalents be covered thereby.

What is claimed is:

1. A method, comprising:
 - establishing a communication range between a data processing unit and sensor electronics by positioning the data processing unit within a predetermined distance from the sensor electronics;
 - receiving an encoded data packet from the data processing unit when the communication range is established, wherein the received encoded data packet includes an activation command;
 - decoding the received data packet;
 - validating the decoded received data packet; and
 - executing one or more routines associated with the received activation command to control the communication or processing of analyte related data; wherein the executed one or more routines includes activating the sensor electronics.
2. The method of claim 1, including executing the one or more routines associated with the activation command when the decoded received data packet is validated.
3. The method of claim 1, wherein validating the decoded received data packet includes comparing a communication identifier in the data packet with a stored value.
4. The method of claim 1, wherein validating the decoded received data packet includes performing error detection on the data packet.

24

5. The method of claim 4, wherein performing error detection on the data packet includes comparing one or more data pattern in the received data packet.

6. The method of claim 4, wherein performing error detection on the data packet includes performing error detection based on one or more error detection bits.

7. The method of claim 6, wherein the received encoded data packet includes the one or more error detection bits.

8. The method of claim 6, wherein the one or more error detection bits includes a predetermined bit pattern.

9. The method of claim 1, wherein a communication identifier includes a device identification information.

10. The method of claim 1, wherein the one or more routines includes a power on routine, a power off routine, a data transfer initiation routine, or a data transfer disable routine.

11. An apparatus, comprising:

a communication interface;

one or more processing units coupled to the communication interface; and

a memory for storing instructions which, when executed by the one or more processing units, causes the one or more processing units to establish a communication range with sensor electronics when positioned within a predetermined distance from the sensor electronics, communicate a data packet to the sensor electronics when the communication range is established, wherein the communicated data packet includes an activation command such that when one or more routines associated with the activation command is executed, the executed one or more routines control the communication or processing of analyte related data, and further wherein the executed one or more routines includes activating the sensor electronics to communicate the analyte related data.

12. The apparatus of claim 11, wherein the one or more processing units processes a communication identifier including sensor electronics identification information received from the sensor electronics when the communication range is established.

13. The apparatus of claim 11, wherein the one or more routines includes a power on routine, a power off routine, a data transfer initiation routine, or a data transfer disable routine.

14. The apparatus of claim 11, wherein the one or more processing units include an application specific integrated circuit (ASIC).

15. The apparatus of claim 11, wherein the communication interface is configured to wirelessly communicate data over a radio frequency communication link.

* * * * *