



US00806665B2

(12) **United States Patent**
Rush et al.

(10) **Patent No.:** **US 8,066,665 B2**
(45) **Date of Patent:** **Nov. 29, 2011**

(54) **DEVICE AND METHOD EMPLOYING SHAPE MEMORY ALLOY**

(56) **References Cited**

(75) Inventors: **Benjamin M. Rush**, Oakland, CA (US);
Christopher V. Reggiardo, Castro
Valley, CA (US)

(73) Assignee: **Abbott Diabetes Care Inc.**, Alameda,
CA (US)

(*) Notice: Subject to any disclaimer, the term of this
patent is extended or adjusted under 35
U.S.C. 154(b) by 200 days.

(21) Appl. No.: **12/563,479**

(22) Filed: **Sep. 21, 2009**

(65) **Prior Publication Data**

US 2010/0076371 A1 Mar. 25, 2010

Related U.S. Application Data

(60) Division of application No. 12/163,944, filed on Jun.
27, 2008, which is a continuation of application No.
11/106,256, filed on Apr. 13, 2005, now Pat. No.
7,399,401, which is a continuation-in-part of
application No. 10/683,659, filed on Oct. 9, 2003, now
Pat. No. 6,916,159.

(60) Provisional application No. 60/424,613, filed on Nov.
6, 2002, provisional application No. 60/424,414, filed
on Nov. 6, 2002, provisional application No.
60/417,464, filed on Oct. 9, 2002.

(51) **Int. Cl.**
A61M 31/00 (2006.01)

(52) **U.S. Cl.** **604/95.05**; 604/890.1

(58) **Field of Classification Search** 604/890.1,
604/95.01, 95.05

See application file for complete search history.

U.S. PATENT DOCUMENTS

3,374,337 A	3/1968	Burley
3,606,592 A	9/1971	Madurski et al.
3,930,493 A	1/1976	Williamson
4,018,547 A	4/1977	Rogen
4,288,793 A	9/1981	Lotscher
4,362,052 A	12/1982	Heath et al.
4,439,197 A	3/1984	Honda et al.
4,472,113 A	9/1984	Rogen
4,524,343 A	6/1985	Morgan et al.
4,529,401 A	7/1985	Leslie et al.
4,984,581 A	1/1991	Stice
5,061,914 A	10/1991	Busch et al.
5,079,920 A	1/1992	Whitehead et al.
5,207,666 A	5/1993	Idriss et al.
5,211,371 A	5/1993	Coffee

(Continued)

FOREIGN PATENT DOCUMENTS

EP 0518524 A2 12/1992
(Continued)

Primary Examiner — Kevin C Sirmons

Assistant Examiner — Deanna K Hall

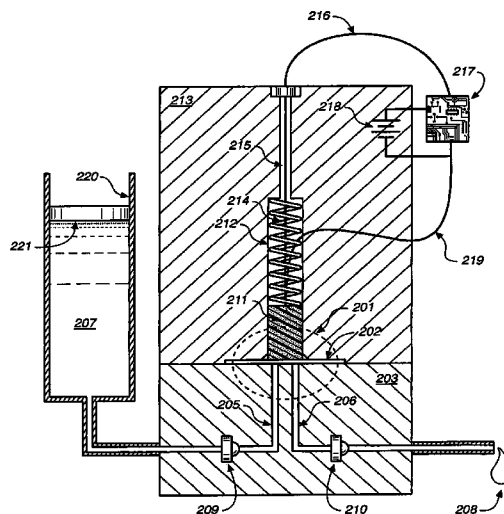
(74) *Attorney, Agent, or Firm* — Fulwider Patton LLP

(57)

ABSTRACT

A system for the metering and delivery of small discrete volumes of liquid is comprised of a small or minimal number of inexpensive components. One such component is a movable member, such as a miniature precision reciprocating displacement pump head, which is driven by an actuator that comprises a shape memory alloy material. The operating mechanism of the system is of little or minimal complexity. The system facilitates the precise metering and delivery of the small discrete volumes of liquid. Potential applications for the system include subcutaneous, long-term, automated drug delivery, for example, the delivery of insulin to a person with diabetes. In such an application, the small, simple and inexpensive nature of the invention would allow for its use as both a portable and a disposable system.

54 Claims, 10 Drawing Sheets



U.S. PATENT DOCUMENTS

5,211,626 A 5/1993 Frank et al.
 5,349,852 A 9/1994 Kamen et al.
 5,366,292 A 11/1994 Voss
 5,526,844 A 6/1996 Kamen et al.
 5,533,389 A 7/1996 Kamen et al.
 5,543,678 A 8/1996 Hoiberg
 5,575,770 A 11/1996 Melsky et al.
 5,576,535 A 11/1996 Oosterwijk et al.
 5,601,435 A 2/1997 Quay
 5,622,413 A 4/1997 Kim et al.
 5,848,990 A 12/1998 Cirelli et al.
 5,918,603 A 7/1999 Brown
 5,919,167 A 7/1999 Mulhauser et al.
 6,059,546 A 5/2000 Brenan et al.
 6,085,871 A 7/2000 Karamata
 6,162,202 A 12/2000 Sicurelli et al.
 6,368,274 B1 4/2002 Van Antwerp et al.
 6,375,638 B2 4/2002 Nason et al.
 6,379,301 B1 4/2002 Worthington et al.
 6,425,829 B1 7/2002 Julien
 6,471,980 B2 10/2002 Sirhan et al.
 6,485,461 B1 11/2002 Mason et al.
 6,582,393 B2 6/2003 Sage, Jr.
 6,633,095 B1 10/2003 Swope et al.
 6,656,158 B2 12/2003 Mahoney et al.
 6,656,159 B2 12/2003 Flaherty
 6,669,669 B2 12/2003 Flaherty et al.
 6,670,806 B2 12/2003 Wendt et al.
 6,692,457 B2 2/2004 Flaherty
 6,699,218 B2 3/2004 Flaherty et al.
 6,723,072 B2 4/2004 Flaherty et al.
 6,740,059 B2 5/2004 Flaherty
 6,749,587 B2 6/2004 Flaherty
 6,830,558 B2 12/2004 Flaherty et al.
 6,960,192 B1 11/2005 Flaherty et al.
 7,018,360 B2 3/2006 Flaherty et al.
 7,029,455 B2 4/2006 Flaherty
 7,052,251 B2 5/2006 Nason et al.
 7,137,964 B2 11/2006 Flaherty
 7,144,384 B2 12/2006 Gorman et al.
 7,167,818 B2 1/2007 Brown
 7,218,017 B1 5/2007 Chitayat et al.
 7,226,278 B2 6/2007 Nason et al.
 7,303,549 B2 12/2007 Flaherty
 2001/0016710 A1 8/2001 Nason et al.

2001/0034502 A1 10/2001 Moberg et al.
 2002/0118090 A1 8/2002 Park et al.
 2003/0009133 A1 1/2003 Ramey
 2003/0078560 A1 4/2003 Miller et al.
 2003/0198558 A1 10/2003 Nason et al.
 2003/0199825 A1 10/2003 Flaherty
 2004/0019321 A1 1/2004 Sage et al.
 2004/0064133 A1 4/2004 Miller et al.
 2005/0051580 A1 3/2005 Ramey
 2005/0171512 A1 8/2005 Flaherty
 2005/0182366 A1 8/2005 Vogt et al.
 2005/0203461 A1 9/2005 Flaherty et al.
 2005/0238503 A1 10/2005 Rush
 2005/0238507 A1 10/2005 Dilanni et al.
 2005/0249606 A1 11/2005 Rush
 2006/0041229 A1 2/2006 Garibotto et al.
 2006/0178633 A1 8/2006 Garibotto et al.
 2006/0282290 A1 12/2006 Flaherty et al.
 2007/0118405 A1 5/2007 Campbell et al.
 2007/0219480 A1 9/2007 Kamen et al.
 2007/0219597 A1* 9/2007 Kamen et al. 607/60

FOREIGN PATENT DOCUMENTS

EP 0455455 B1 7/1994
 EP 0878707 A1 11/1998
 EP 1130638 A2 5/2001
 EP 0543916 B1 7/2001
 JP 2001056673 2/2001
 JP 2001177423 6/2001
 WO 02084860 A1 10/2002
 WO 2004028337 A2 4/2004
 WO 2004032994 A2 4/2004
 WO 2004061420 A2 7/2004
 WO 2005089103 A2 9/2005
 WO 2005101994 A2 11/2005
 WO 2006079114 A2 7/2006
 WO 2006102412 A2 9/2006
 WO 2006110913 A2 10/2006
 WO 2006113408 A2 10/2006
 WO 2006113521 A2 10/2006
 WO 2006118947 A2 11/2006
 WO 2006132884 A2 12/2006
 WO 2007041072 A2 4/2007
 WO 2007090037 A2 8/2007

* cited by examiner

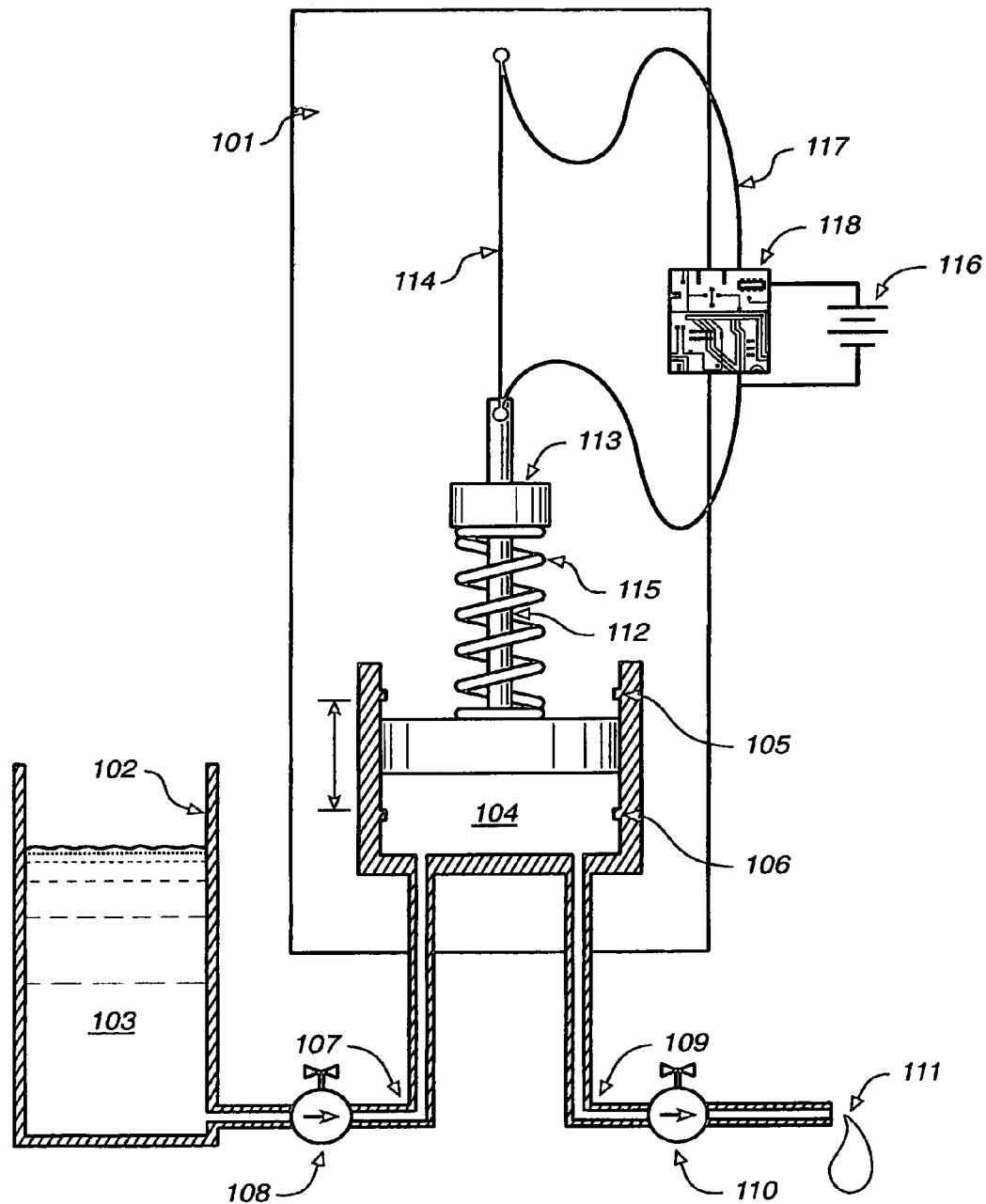


FIG. 1A

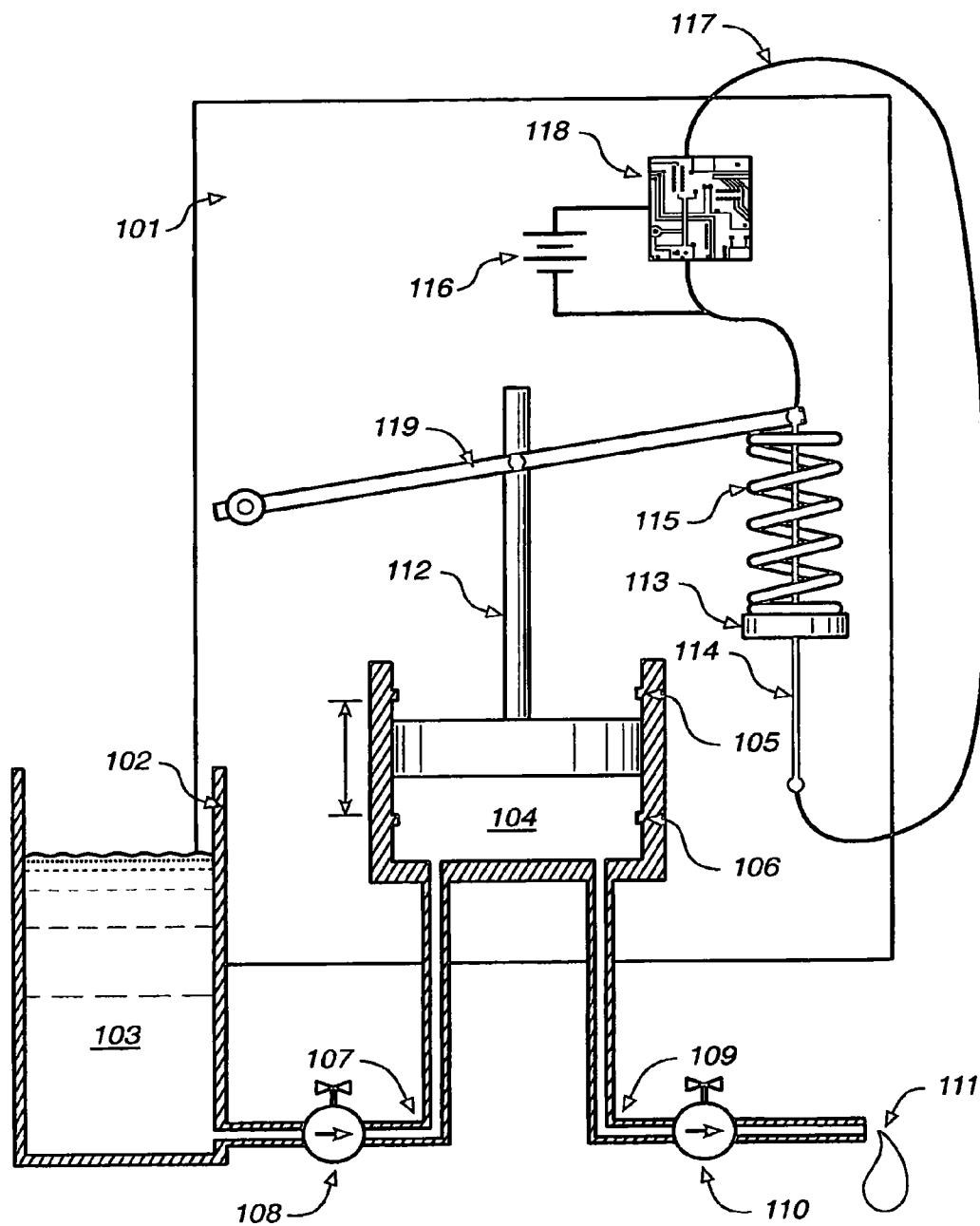


FIG. 1B

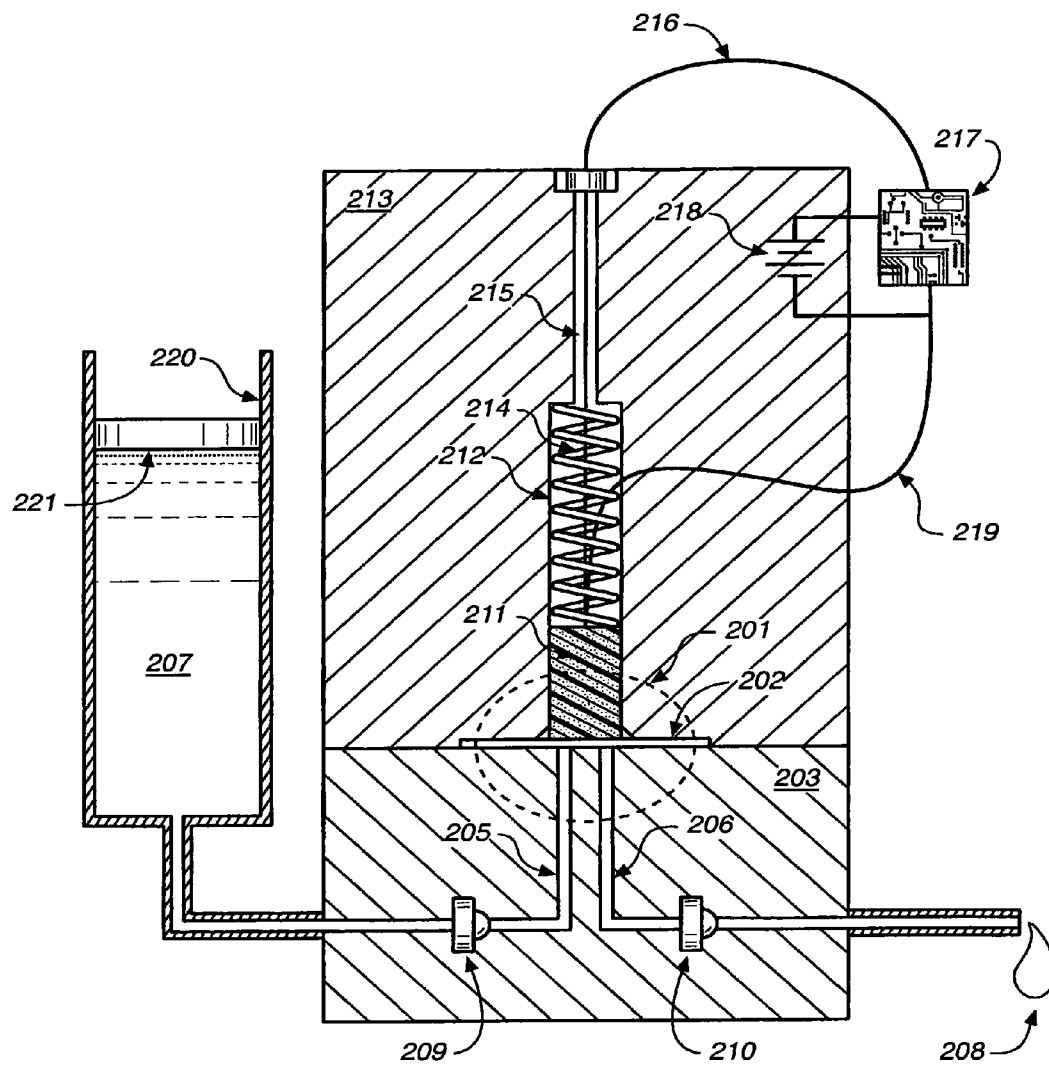


FIG. 2A

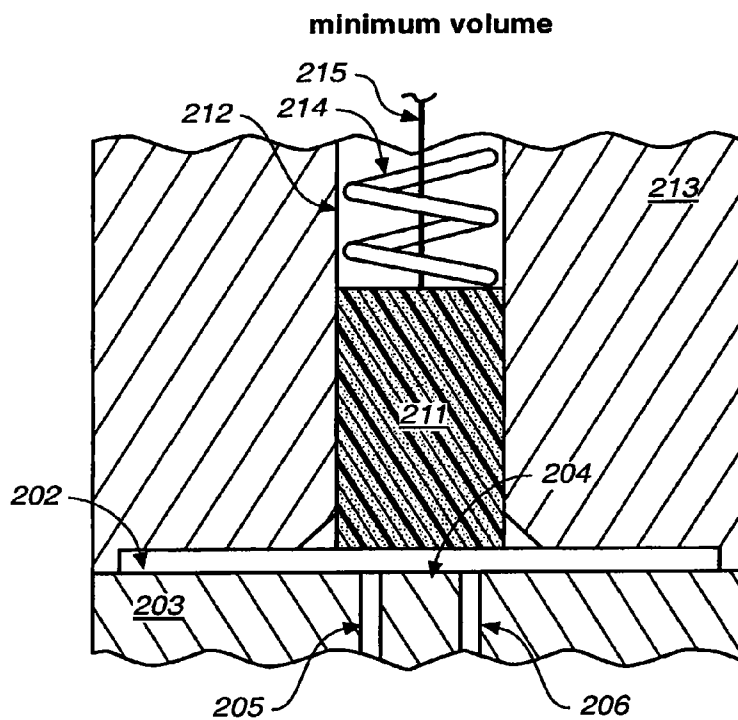


FIG._2B

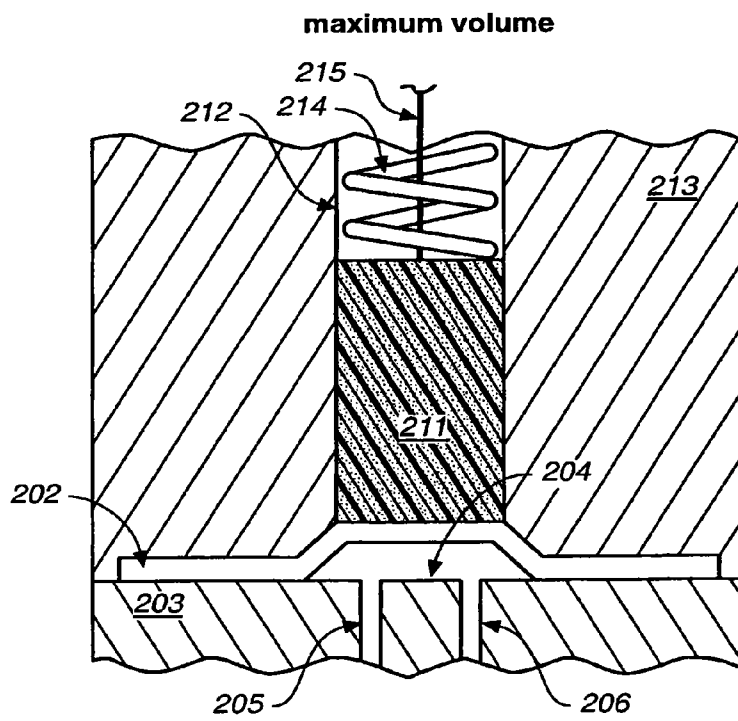


FIG._2C

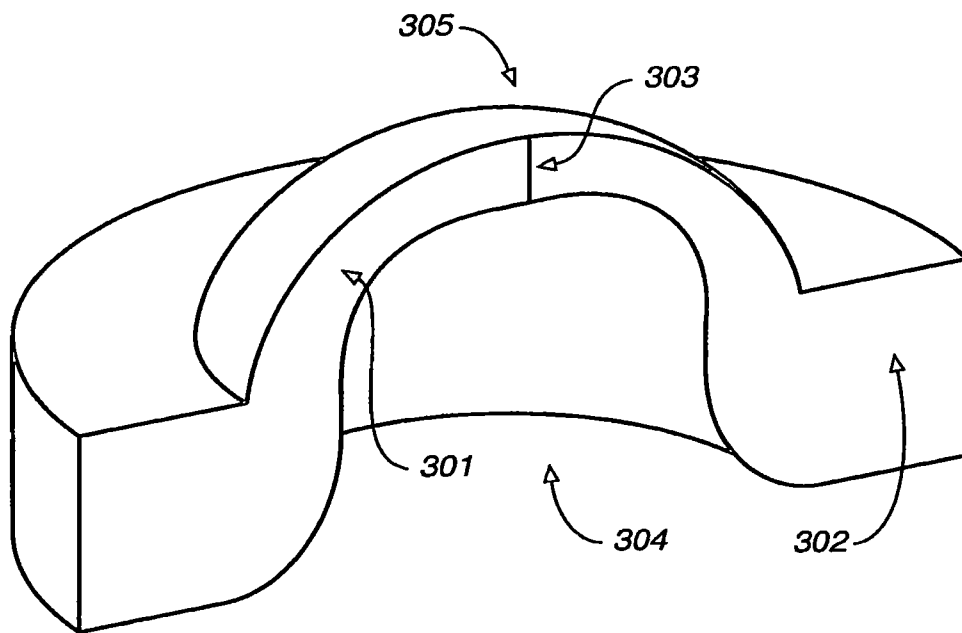


FIG.-3

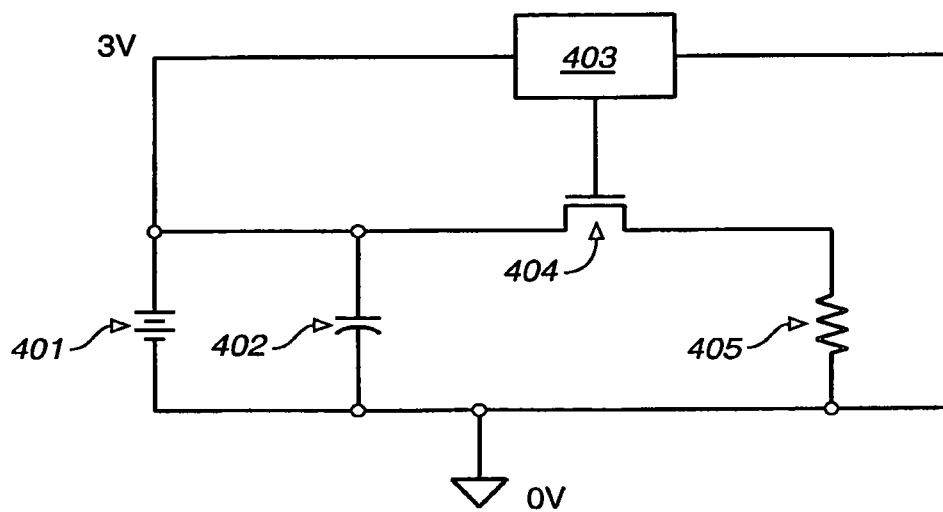
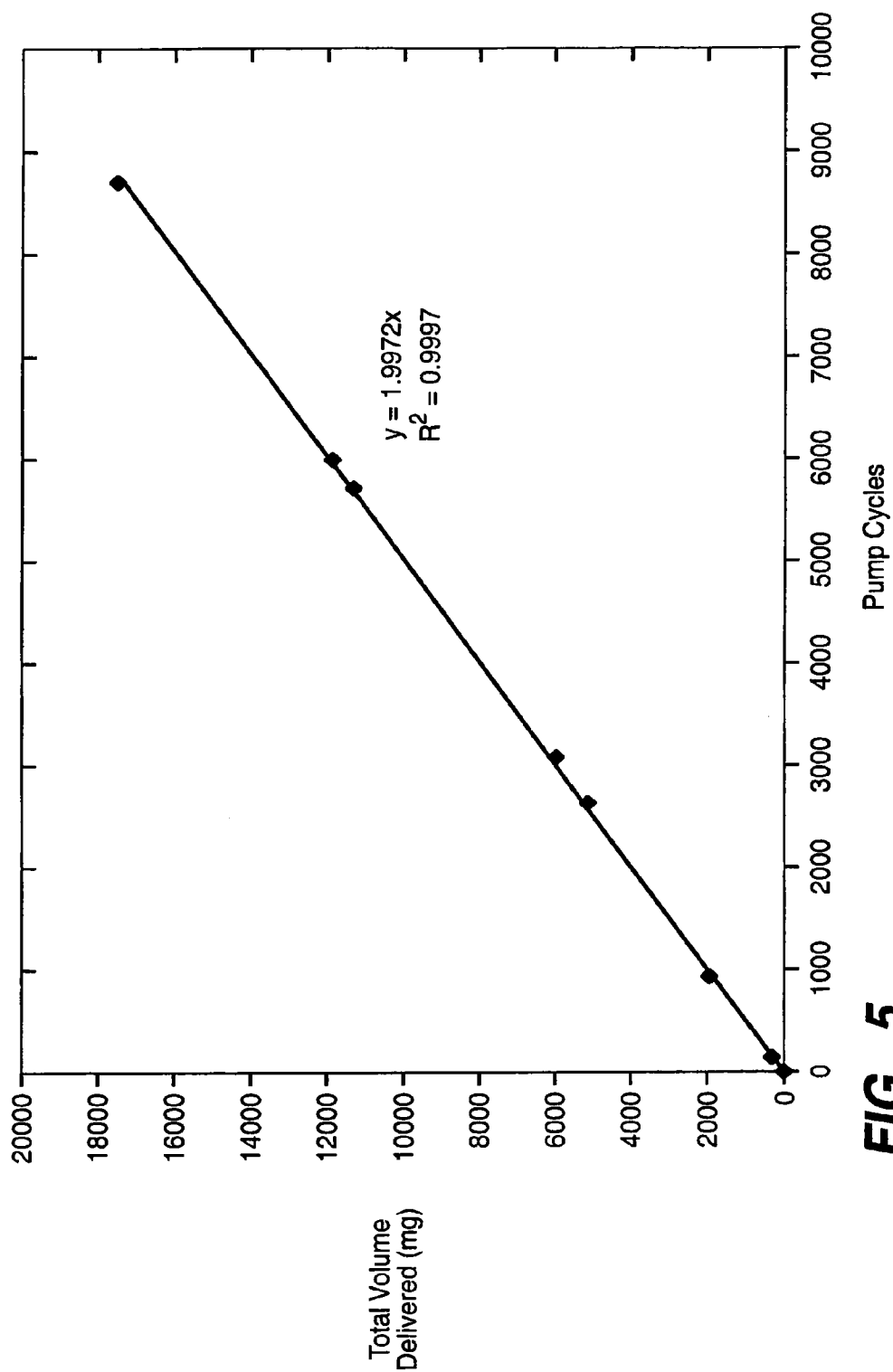


FIG.-4

**FIG. 5**

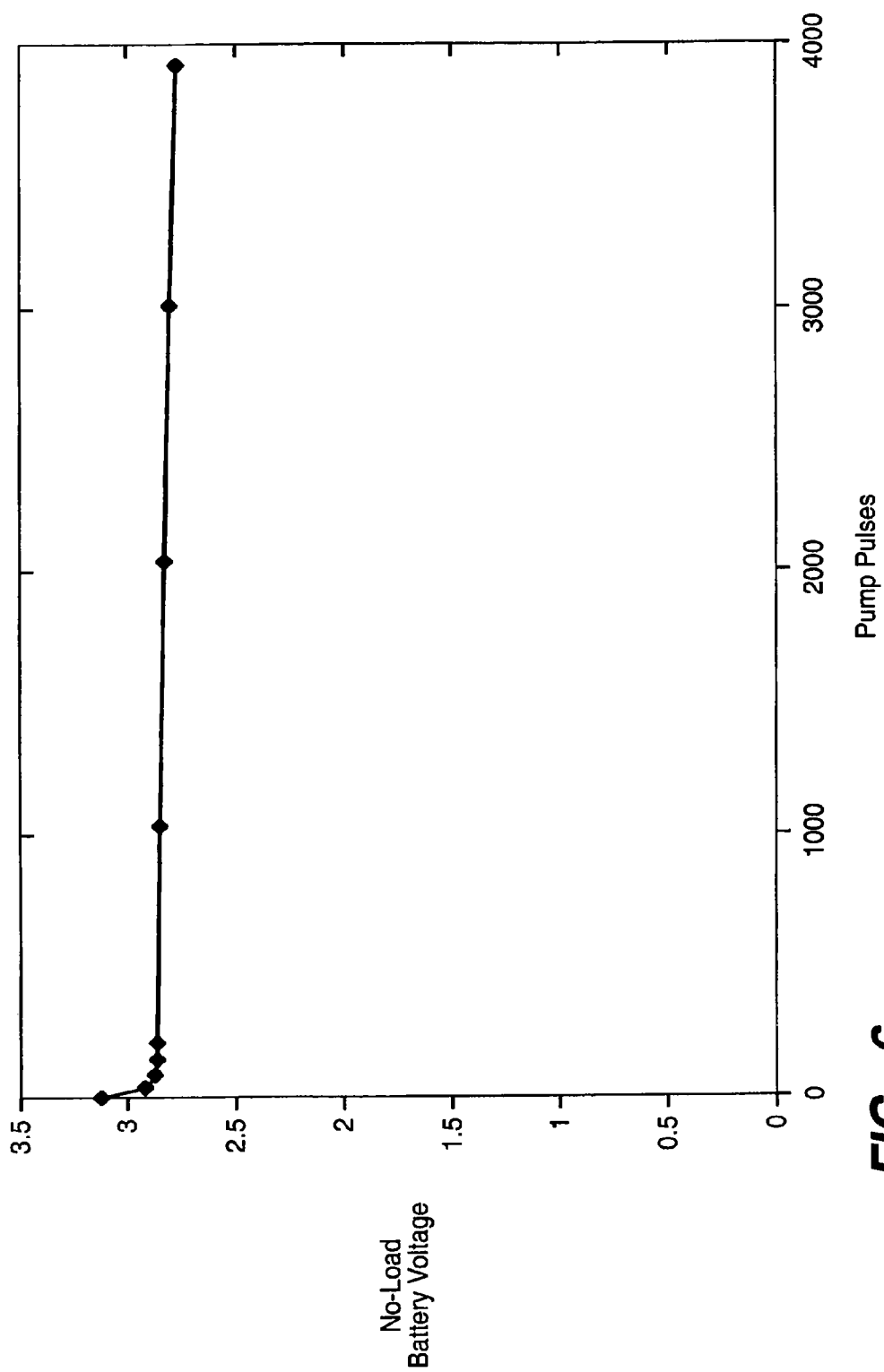


FIG._6

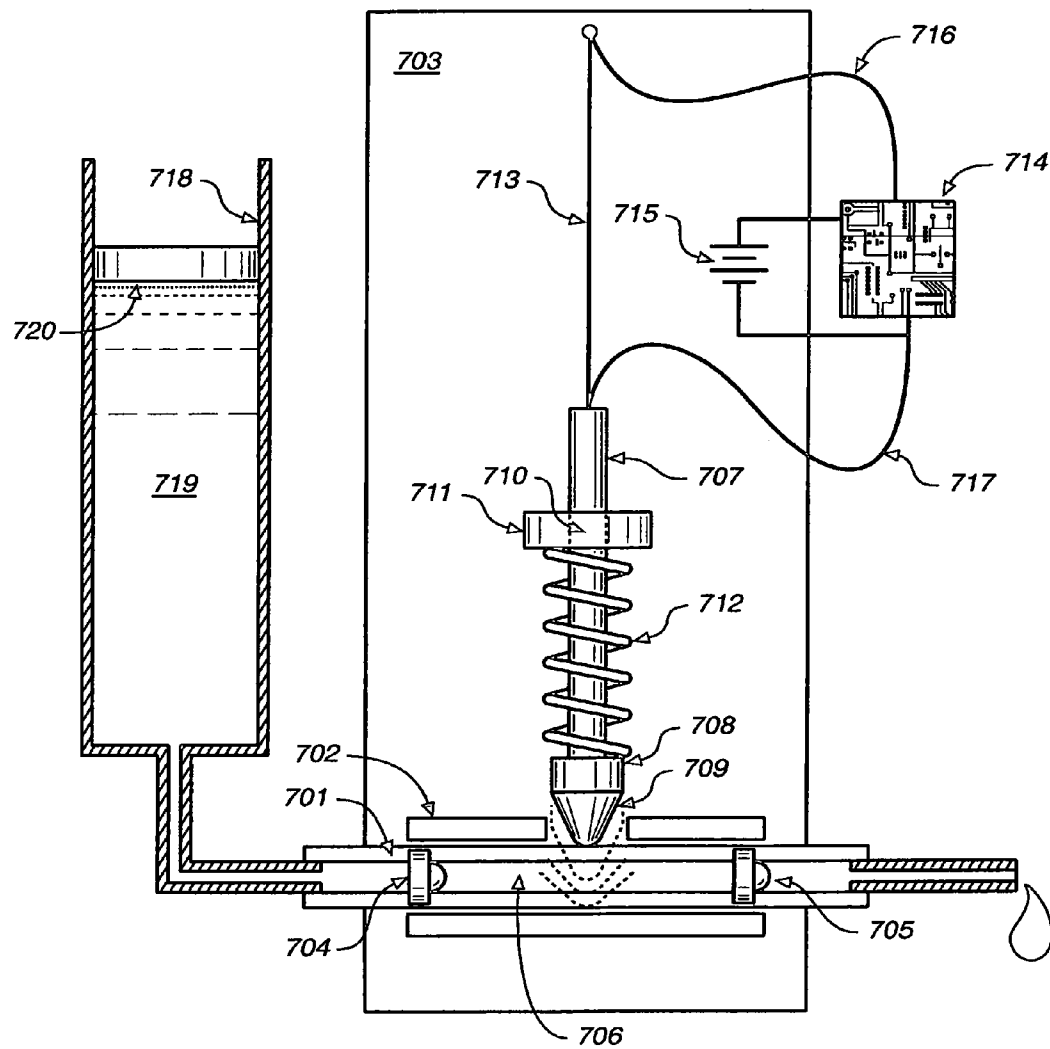


FIG. 7

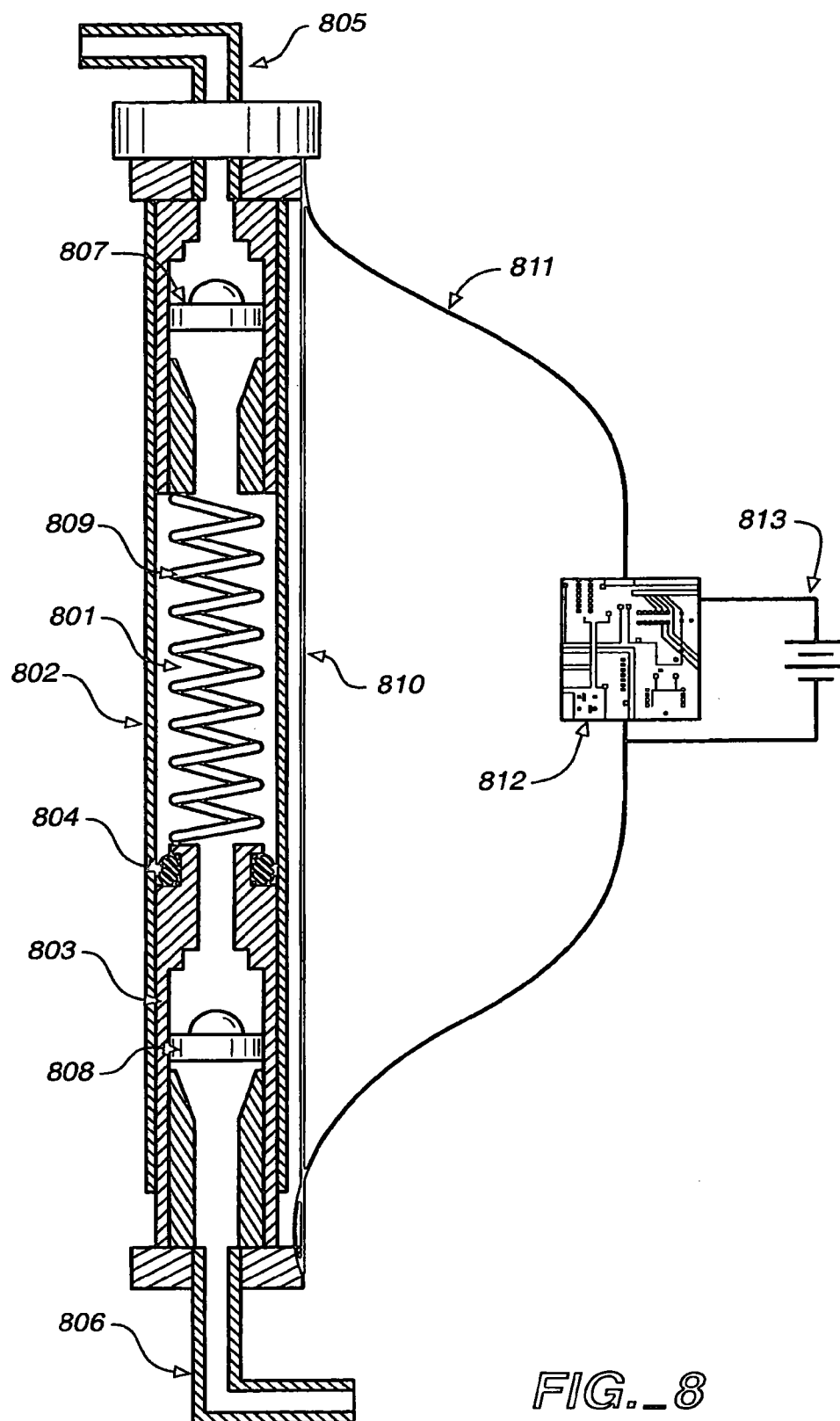
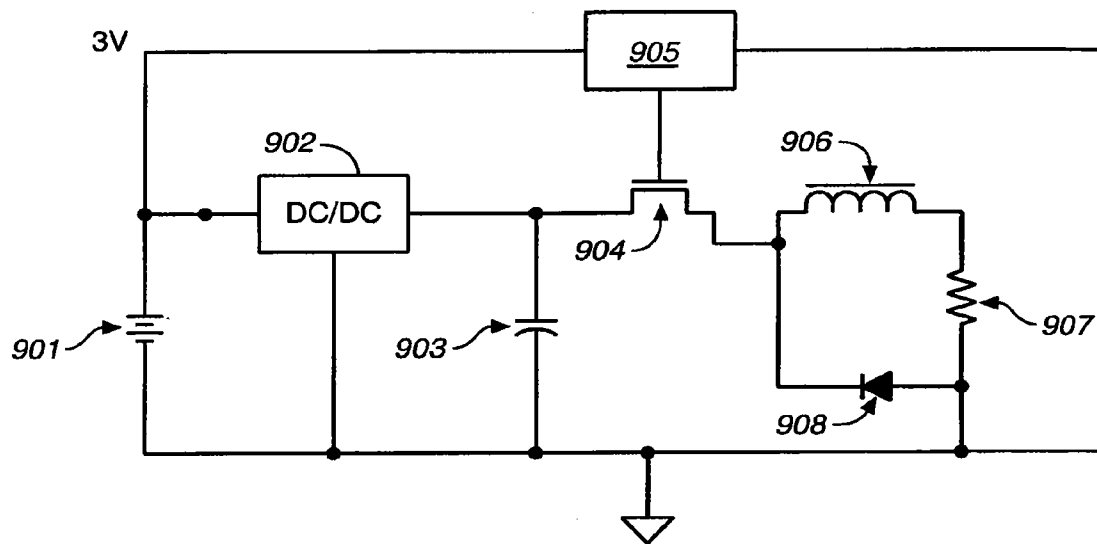


FIG. 8

**FIG._9**

1

DEVICE AND METHOD EMPLOYING SHAPE MEMORY ALLOY

CROSS-REFERENCE TO RELATED APPLICATIONS

This is a divisional application of co-pending parent application having U.S. application Ser. No. 12/163,944, filed Jun. 27, 2008, which is a continuation of U.S. application Ser. No. 11/106,256, filed Apr. 13, 2005, now U.S. Pat. No. 7,399,401, which is a continuation-in-part (CIP) of U.S. application Ser. No. 10/683,659, filed Oct. 9, 2003, now U.S. Pat. No. 6,916,159, which claims benefit and priority based on U.S. Provisional Application No. 60/417,464, entitled "Disposable Pump For Drug Delivery System," filed on Oct. 9, 2002, U.S. Provisional Application No. 60/424,613, entitled "Disposable Pump And Actuation Circuit For Drug Delivery System," filed on Nov. 6, 2002, and U.S. Provisional Application No. 60/424,414, entitled "Automatic Biological Analyte Testing Meter With Integrated Lancing Device And Methods Of Use," filed Nov. 6, 2002, each of which is incorporated herein in its entirety by this reference. This non-provisional application is also related to U.S. Pat. No. 6,560,471, entitled "Analyte Monitoring Device and Methods of Use," issued May 6, 2003, which is incorporated herein in its entirety by reference.

FIELD OF INVENTION

This invention generally relates to fluid delivery devices, systems, and methods. This invention further relates to small volume, disposable medical devices for the precision delivery of medicines or drugs such as insulin, and associated systems and methods.

BACKGROUND OF THE INVENTION

Insulin pumps are widely available and are used by diabetic people to automatically deliver insulin over extended periods of time. All currently available insulin pumps employ a common pumping technology, the syringe pump. In a syringe pump, the plunger of the syringe is advanced by a lead screw that is turned by a precision stepper motor. As the plunger advances, fluid is forced out of the syringe, through a catheter to the patient. The choice of the syringe pump as a pumping technology for insulin pumps is motivated by its ability to precisely deliver the relatively small volume of insulin required by a typical diabetic (about 0.1 to about 1.0 cm³ per day) in a nearly continuous manner. The delivery rate of a syringe pump can also be readily adjusted through a large range to accommodate changing insulin requirements of an individual (e.g., basal rates and bolus doses) by adjusting the stepping rate of the motor. While the syringe pump is unparalleled in its ability to precisely deliver a liquid over a wide range of flow rates and in a nearly continuous manner, such performance comes at a cost. Currently available insulin pumps are complicated and expensive pieces of equipment costing thousands of dollars. This high cost is due primarily to the complexity of the stepper motor and lead screw mechanism. These components also contribute significantly to the overall size and weight of the insulin pump. Additionally, because of their cost, currently available insulin pumps have an intended period of use of up to two years, which necessitates routine maintenance of the device such as recharging the power supply and refilling with insulin.

U.S. Pat. No. 6,375,638 of Clyde Nason and William H. Stutz, Jr., entitled "Incremental Motion Pump Mechanisms

2

Powered by Shape Memory Alloy Wire or the Like," issued Apr. 23, 2002, and naming Medtronic MiniMed, Inc. as the assignee, which patent is incorporated herein in its entirety by this reference, describes various ratchet type mechanisms for incrementally advancing the plunger of a syringe pump. The ratchet mechanisms are actuated by a shape memory alloy wire. The embodiments taught by Nason et al. involve a large number of moving parts, and are mechanically complex, which increases size, weight and cost, and can reduce reliability.

SUMMARY OF THE INVENTION

A fluid delivery system constructed according to the present invention can be utilized in a variety of applications. As described in detail below, it can be used to deliver medication to a person or animal. The invention can be applied in other medical fields, such as for implantable micro-pump applications, or in non-medical fields such as for small, low-power, precision lubricating pumps for precision self-lubricating machinery.

In its preferred embodiment, the present invention provides a mechanical insulin delivery device for diabetics that obviates the above-mentioned limitations of the syringe pump namely size, weight, cost and complexity. By overcoming these limitations, a precise and reliable insulin delivery system can be produced with sufficiently low cost to be marketed as a disposable product and of sufficiently small size and weight to be easily portable by the user. For example, it is envisioned that such a device can be worn discretely on the skin as an adhesive patch and contain a three-day supply of insulin after the use of which the device is disposed of and replaced.

The present invention relates to a miniature precision reciprocating displacement pump head driven by a shape memory alloy actuator. Shape memory alloys belong to a class of materials that undergo a temperature induced phase transition with an associated significant dimensional change. During this dimensional change, shape memory alloys can exert a significant force and can thus serve as effective actuators. The shape memory alloy actuator provides an energy efficiency about one thousand times greater than that of a conventional electromechanical actuator, such as a solenoid, and a force to mass ratio about ten thousand times greater. Additionally, the cost of shape memory alloy materials compares favorably to the cost of electromechanical devices with similar capabilities.

The device of the present invention is intended to be operated in a periodic dosing manner, i.e., liquid is delivered in periodic discrete doses of a small fixed volume rather than in a continuous flow manner. The overall liquid delivery rate for the device is controlled and adjusted by controlling and adjusting the dosing period. Thus the device employs a precision timing mechanism in conjunction with a relatively simple mechanical system, as opposed to a complex mechanical system, such as that embodied by the syringe pump.

A precision timing device is an inherently small, simple and inexpensive device. It is an underlying assumption of the invention (and a reasonable conclusion of process control theory) that in the treatment of diabetes, there is no clinical difference between administering insulin in periodic discrete small doses and administering insulin in a continuous flow, as long as the administration period of the discrete dose is small compared to the interval of time between which the blood glucose level is measured. For the present invention, a small dose size is regarded as on the order of 0.10 units of insulin (1 microliter) assuming a standard pharmaceutical insulin

3

preparation of 100 units of insulin per ml (U100). A typical insulin dependent diabetic person uses between 10 and 100 units of insulin per day, with the average diabetic person using 40 units of insulin. Thus the present invention would deliver the daily insulin requirements of the average diabetic person in 400 individual discrete doses of 1 μ l each with a dosing period that can be programmed by the user. A pump constructed according to the present invention can have a predetermined discrete dosage volume that is larger or smaller than 1 μ l, but preferably falls within the range of 0.5 to 5 μ l, and more preferably falls within the range of 1 to 3 μ l. The smaller the discrete dose is of a particular pump design, the more energy required by the device to deliver a given amount of fluid, since each pump cycle consumes roughly the same amount of energy regardless of discrete dosage size. On the other hand, the larger the discrete dosage is, the less precise the pump can mimic the human body in providing a smooth delivery rate. A device constructed according to the present invention is also suitable for delivery of other drugs that might be administered in a manner similar to insulin.

It is further intended that the present invention could be used as a disposable component of a larger diabetes management system comprised of additional disposable and non-disposable components. For example, the present invention could be coupled with a continuous blood glucose monitoring device and remote unit, such as a system described in U.S. Pat. No. 6,560,471, entitled "Analyte Monitoring Device and Methods of Use," issued May 6, 2003. In such an arrangement, the hand-held remote unit that controls the continuous blood glucose monitoring device could wirelessly communicate with and control both the blood glucose monitoring unit and the fluid delivery device of the present invention. The monitor and pump could be physically separate units, or could share one or more disposable and/or non-disposable components. For example, a disposable pump constructed according to the present invention and charged with a 3-day supply of insulin, a small battery and a disposable glucose sensor could be integrated into a single housing and releasably coupled with non-disposable components such as control electronics, a transmitter/receiver and a user interface to comprise a small insulin delivery device that could be worn on the skin as an adhesive patch. Alternatively, the battery (or batteries) and/or sensor could be replaced separately from the disposable pump. Such arrangements would have the advantage of lowering the fixed and recurring costs associated with use of the invention.

BRIEF DESCRIPTION OF THE DRAWINGS

A detailed description of various embodiments of the invention is provided herein with reference to the accompanying drawings, which are briefly described below.

FIG. 1A shows a schematic representation of a most general embodiment of the invention.

FIG. 1B shows a schematic representation of an alternative general embodiment of the invention.

FIG. 2A shows a schematic representation of a preferred embodiment of the invention.

FIGS. 2B and 2C show enlarged details of a preferred embodiment of the invention.

FIG. 3 shows a schematic representation of a preferred embodiment of a check valve to be used in the invention.

FIG. 4 shows a schematic representation of a preferred embodiment of a pulse generation circuit to be used with the invention.

FIG. 5 shows data from the experimental characterization of the reproducibility of a functional model of the invention.

4

FIG. 6 shows data from the experimental characterization of the energy utilization of a functional model of the invention.

FIG. 7 shows a schematic representation of a first alternative embodiment of the invention.

FIG. 8 shows a schematic representation of a second alternative embodiment of the invention.

FIG. 9 shows a schematic representation of a first alternative embodiment of a pulse generation circuit to be used with the invention.

DETAILED DESCRIPTION OF THE PREFERRED EMBODIMENTS

A device of the present invention includes a miniature precision reciprocating displacement pump driven by a shape memory alloy wire linear actuator and controlled by a programmable pulse generating circuit. For purposes of description, the device is divided into three subcomponents, a precision miniature reciprocating displacement pump head, a shape memory alloy linear actuator, and a programmable pulse generating circuit. Each subcomponent is comprised of multiple elements. A schematic representation of a most general embodiment of the invention is shown in FIG. 1A and is described below.

The miniature precision pump head is comprised of the following elements: a rigid substrate **101** to which other components may be attached so as to fix their orientation and position relative to one another, a fluid reservoir **102** for storing the fluid to be pumped **103** and a small cavity, henceforth referred to as the displacement cavity **104**, whose volume can be varied between precisely defined limits. The limit corresponding to a state of maximum volume for the displacement cavity **104** is defined as the first limit **105** and the limit corresponding to a state of minimum volume for the displacement cavity **104** is defined as the second limit **106**. An inlet conduit **107** connects the displacement cavity **104** to the fluid reservoir **102** and thus permits fluid flow between the two. An inlet check valve **108** is situated within the inlet conduit **107** such that fluid flow is restricted to flowing from the fluid reservoir **102** to the displacement cavity **104**. An outlet conduit **109** connects the displacement cavity **104** to some point **111** to which it is desired to deliver the fluid. An outlet check valve **110** is situated within the outlet conduit **109** such that fluid flow is restricted to flowing from the displacement cavity **104** to the point **111** to which it is desired to deliver the fluid.

The shape memory alloy actuator is comprised of a shape memory alloy material, such as a nickel-titanium alloy material, sometimes referred to as "nitinol." The shape memory alloy material is sensitive to temperature or heat. For example, the material temporarily shrinks at a certain temperature, or shrinkage temperature, such as about 70° C. above ambient temperature for nitinol, and expands at a relatively lower temperature to return to its original condition. In response to being heated to the above-described shrinkage temperature, the shape memory alloy undergoes a dimensional change, such as a change in its length. In this way, a wire composed of a material such as nitinol, can undergo a change in length and a return toward its original length one or more times via temperature treatment or repeated temperature cycling. It is contemplated that a material that expands by going through a phase transition at a certain temperature and shrinks at a different temperature to return toward its original condition could be used.

In the process of undergoing a dimensional change, as described above, the shape alloy material goes through a reversible phase transition or transformation, or a reversible

5

structural phase transition, upon a change in temperature. Generally, such a transition represents a change in the material from one solid phase of the material to another, for example, by virtue of a change in the crystal structure of the material or by virtue of a reordering of the material at a molecular level. In the case of nitinol, for example, the super-elastic alloy has a low temperature phase, or martensitic phase, and a high temperature phase, or austenitic phase. These phases can also be referred to in terms of a stiff phase and a soft and malleable phase, or responsive phase. The particular phase transition associated with a particular alloy material may vary.

The shape memory alloy actuator is also comprised of the following elements. A movable member is referred to as a plunger 112 and is fixed by a rigid restraint 113 such that it is constrained to a periodic motion of precisely fixed limits. The plunger 112 is situated in relation to and/or attached to the displacement cavity 104 such that movement of the plunger 112 within the limits of its constrained motion will cause the volume of the displacement cavity 104 to be varied between its limits 105, 106. A biasing spring 115 is situated relative to the rigid restraint 113 and the plunger 112 such that at equilibrium, the biasing spring 115 exerts a force on the plunger 112 whose direction is that which would induce the displacement cavity 104 toward a state of minimum volume, i.e., toward its second limit 106. A length of shape memory alloy wire 114 is connected at one end to the plunger 112 and at another end to the rigid substrate 101. The shape memory alloy wire 114 is situated such that its dimensional change will give rise to motion of the plunger 112. The shape memory alloy wire 114 and the biasing spring 115 are both of sufficient dimension such that when the shape memory alloy wire 114 is heated so as to induce phase transition and associated dimensional change, the wire will move the plunger 112 against the force of the biasing spring 115 "in one generally uninterrupted motion" to its second limit 105 so as to create a state of maximum volume within the displacement cavity 104, whereas when the shape memory alloy is allowed to cool to ambient temperature, the force imparted by the biasing spring 115 will stretch the shape memory alloy wire 114 until the point where the displacement cavity 104 is in a state of minimum volume.

The programmable pulse generating circuit is comprised of a source of electric power 116, an electrical connection 117 from the source of electric power 116 to each end of the shape memory alloy wire 114 and a programmable pulse generating circuit 118 situated along the electrical connection 117 such that pulses of electricity from the electric power source 116 may be applied to the shape memory alloy wire 114 automatically in a preset regular periodic manner.

Operation of the device proceeds in a cyclic manner. For purposes of description the beginning of the cycle is defined as the following state. All void space within the fluid reservoir 102, inlet 107 and outlet 109 conduit, inlet 108 and outlet 110 check valves and displacement cavity 104 are completely filled with the fluid 103 to be pumped. The shape memory alloy wire 114 is at ambient temperature and thus in a state of maximum length. Correspondingly, the position of the plunger 112 is such that the volume of the displacement chamber 104 is at its minimum value. The biasing spring 115 is in a compressed state such that it exerts a force on the plunger 112 consistent with a state of minimum volume of the displacement cavity 104. Operation of the device involves first a heating of the shape memory alloy wire 114 to a temperature and for a period of time sufficient to induce phase transition and an associated dimensional change. Heating of the shape memory alloy wire 114 is accomplished by passing

6

an electric current through it. The duration of the electric heating period is preset and is controlled by the timing and switching circuit 118. The dimensional change of the shape memory alloy wire 114 will result in the movement of the plunger 112 against the opposing force of biasing spring 115 so as to vary the volume of the displacement chamber 104 toward its first limit 105 and a state of maximum volume. As the volume of the displacement cavity 104 is increased, fluid 103 is drawn into the displacement cavity 104 from the fluid reservoir 102 through the inlet conduit 107 and inlet check valve 108. Fluid 103 is not drawn into the displacement cavity 104 through the outlet conduit 109 due to the one-way flow restriction of the outlet check valve 110. After the preset duration, the current is then switched off by the timing and switching circuit 118 allowing the shape memory alloy wire 114 to cool below its phase transition temperature. Cooling proceeds via natural convection to the ambient environment. When the shape memory alloy wire 114 cools below its phase transition temperature, the force exerted by the biasing spring 115 stretches the shape memory alloy wire 114 to its original maximum length. This allows the movement of the plunger 112 so as to vary the volume of the displacement cavity 104 toward its second limit 106 and a state of minimum volume. As the volume of the displacement cavity 104 is decreased, fluid 103 is pushed out of the displacement cavity 104 through the outlet conduit 109 and outlet check valve 110. Fluid 103 is not pushed out of the displacement cavity 104 through the inlet conduit 107 due to the one-way flow restriction of the inlet check valve 108. Thus one complete heating and cooling cycle of the shape memory alloy wire 114 results in the delivery of a volume of fluid 103 from the fluid reservoir 102 to the end of the outlet conduit 111. The volume of fluid delivered with each cycle is precisely equal to the difference between the maximum and minimum volumes of the displacement cavity 104 as determined by the precisely defined limits 105, 106. The overall rate of fluid delivery is controlled by varying the period of time between actuations of the shape memory alloy actuator 104.

An Alternative General Embodiment of the Invention

A schematic representation of an alternative general embodiment of the invention is shown in FIG. 1B. The alternative general embodiment includes all of the same components and elements as the general embodiment shown in FIG. 1A with the following exceptions. In this embodiment of the invention, heating of the shape memory alloy material 114 so as to cause a phase transition associated shortening of its length results in a minimum volume condition for the displacement cavity 104. This may be achieved, for example, through the use of a pivoting linkage assembly 119 connecting the biasing spring 115 to the plunger 112.

Detailed Description of a Preferred Embodiment of the Invention

As stated previously, it is an intention of the present invention that it be sufficiently small and sufficiently inexpensive to be practically used as both a portable device and as a disposable device. For example, a device that can be comfortably worn on the skin as an adhesive patch and can be disposed of and replaced after 3 days of use. A preferred embodiment of the invention includes specific embodiments of the various elements and components of the general embodiment that are consistent with this intention.

A preferred embodiment of the invention is diagrammed schematically in FIGS. 2A, 2B and 2C and is comprised of all

of the same elements and components of the general embodiment of the invention shown in FIGS. 1A and 1B with the following exceptions. In a preferred embodiment of the invention the displacement cavity is comprised of an elastomeric diaphragm pump head **201**. An enlarged view of the details of the diaphragm pump head **201** is shown by FIG. 2B with pump head **201** in a state of minimum volume and by FIG. 2C with pump head **201** in a state of maximum volume. The diaphragm pump head is comprised of an elastomeric diaphragm **202** set adjacent to a rigid substrate **203** and scaled about a perimeter of the elastomeric diaphragm **202**. The displacement cavity **204** is then comprised of the volume in between the adjacent surfaces of the rigid substrate **203** and the elastomeric diaphragm **202** within the sealed perimeter.

Separate inlet **205** and outlet **206** conduits within the rigid substrate **203** access the displacement volume of the elastomeric diaphragm pump head **201** with the inlet conduit **205** connecting the displacement cavity **204** with a fluid reservoir **207** and the outlet conduit **206** connecting the displacement cavity **204** to the point to which it is desired to deliver fluid **208**. An inlet check valve **209** and an outlet check valve **210** are situated within the inlet conduit **205** and outlet conduit **206** respectively, oriented such that the net direction of flow is from the fluid reservoir **207** to the point to which it is desired to deliver fluid **208**.

The plunger **211** is comprised of a cylindrical length of rigid dielectric material. The plunger **211** is situated within a cylindrical bore **212** of a rigid restraint **213** such that the axis of the plunger **211** is oriented normal to surface of the elastomeric diaphragm **202**. The flat head of the plunger **211** is functionally attached to the non-wetted surface of elastomeric diaphragm **202** opposite the displacement cavity **204** such that movement of the plunger **211** along a line of motion coincident with its axis will cause the concomitant variation in the volume of the displacement cavity **204**. The biasing spring **214** is situated within the cylindrical bore **212** of the rigid restraint **213**, coaxial with the plunger **211**. The relative positions and dimensions of the plunger **211**, the rigid restraint **213** and the biasing spring **214** are such that at equilibrium the biasing spring **214** exerts a force on the plunger **211** along a line coincident with its axis such that the displacement cavity **204** is in a state of minimum volume (FIG. 2A).

A straight length of shape memory alloy wire **215** is situated in a position coincident with the axis of the plunger **211**. One end of the shape memory alloy wire **215** is fixed to the rigid restraint **203** and electrically connected by connection **216** to the programmable pulse generating circuit **217** and the electric power source **218**. The other end of the shape memory alloy wire **215** along with an electrical connection **219** to that end is connected to the end of the plunger **211**. The shape memory alloy wire **215** and the biasing spring **214** are both of sufficient dimension such that when the shape memory alloy wire **215** is heated so as to induce phase transition and associated dimensional change, it will pull the plunger **211** against the force of the biasing spring **214** so as to create a state of maximum volume within the displacement cavity **204**, whereas when the shape memory alloy is allowed to cool to ambient temperature, the force imparted by biasing spring **214** will stretch the shape memory alloy wire **215** until the point where the displacement cavity **204** is in a state of minimum volume.

A preferred embodiment of an inlet and outlet check valve is shown in cross-section in FIG. 3 and is comprised of a molded one-piece elastomeric valve which can be press-fit into the inlet or outlet conduit. An important feature for a check valve appropriate for use in the present invention is that

it possesses a low cracking pressure and provides a tight seal in the absence of any back pressure. A preferred embodiment of such a check valve is comprised of a thin-walled elastomeric dome **301** situated on top of a thick elastomeric flange **302**. The top of the dome has a small slit **303** cut through it that is normally closed. A fluid pressure gradient directed toward the concave side **304** of the dome will induce an expansion of the dome **301** forcing the slit **303** open so as to allow fluid to flow through the valve in this direction. A fluid pressure gradient directed toward the convex side **305** of the dome will induce a contraction of the dome **301** forcing the slit **303** shut so as to prohibit fluid to flow through the valve in this direction.

A preferred embodiment of a pulse generating circuit is shown in FIG. 4 and is comprised of a 200 milliamp-hour, lithium-manganese oxide primary battery **401**, a high capacitance, low-equivalent series resistance (ESR) electrochemical capacitor **402**, a programmable digital timing circuit **403**, and a low-resistance field effect transistor switch **404**. The shape memory alloy wire is indicated in FIG. 4 symbolically as a resistor **405**. The battery **401** and electrochemical capacitor **402** are electrically connected to each other in parallel and are connected to the shape memory alloy wire **405** through the transistor switch **404**. The programmable timing circuit **403**, also powered by the battery **401**, sends a gating signal to the transistor switch **404**, as programmed by the user in accordance with the user's pumping requirements. During the period of time for which the transistor switch **404** is open, the battery **401** will keep the electrochemical capacitor **402** at a state of full charge. During the period of time for which the transistor switch **404** is closed, power will be delivered to the shape memory alloy wire **405**, primarily from the electrochemical capacitor **402** rather than from the battery **401**, owing to the substantially lower ESR associated with the electrochemical capacitor **402**. As such, the battery **401** is substantially isolated from the high current draw associated with the low resistance of the shape memory alloy wire **405** and the useful life of the battery **401** is significantly extended.

A preferred embodiment of a fluid reservoir **207** appropriate for use with the present invention is one for which the volume of the fluid reservoir diminishes concomitantly as fluid is withdrawn such that it is not necessary to replace the volume of the withdrawn fluid with air or any other substance. A preferred embodiment of a fluid reservoir **207** might comprise a cylindrical bore **220** fitted with a movable piston **221**, for example, a syringe, or a balloon constructed of a resilient material.

Operation of the preferred embodiment of the invention proceeds in a manner analogous to that described for the most general embodiment. In addition to its simplicity, the preferred embodiment has the advantage of physically blocking any fluid flow from the fluid reservoir to the point to which it is desired to deliver the fluid when there is no power being supplied to the system. This provides additional protection against an overdose caused by fluid expanding or being siphoned through the check valves when the system is inactive.

Detailed Description of a Functional Model of the Invention

A functional model of a preferred embodiment of the invention has been constructed and its performance has been characterized. The functional model is similar in appearance to the preferred embodiment of the invention shown in FIGS. 2, 3 and 4 and is described in more detail below. The fixed rigid components of the pump including the rigid restraint

and the rigid substrate of the diaphragm pump head are each machined from a monolithic block of acetal. Inlet and outlet conduits are additionally machined out of the same block. Check valves are commercially available one-piece elastomeric valves (for example, Check Valve, Part # VA4914, available from Vernay Laboratories Inc. of Yellow Springs, Ohio). A length of shape memory alloy actuator is 40 mm long and 125 μ m in diameter (for example, Shape Memory Alloy Wire, Flexinol 125 LT, available from Mondo-tronics, Inc. of San Rafael, Calif.). Electrical connections to the ends of the shape memory alloy actuator are made with 30 AWG copper wire. The copper wire is twisted to the shape memory alloy wire to effect a good electrical connection. A plunger is machined out of acetal and has an overall length of 10.0 mm and a shaft diameter of 3.2 mm. An elastomer diaphragm is comprised of 0.025 mm thick silicon rubber film (for example, Silicon Rubber Film, Cat. # 86435K31, available from McMaster Carr, of Los Angeles, Calif.). The flat head of the plunger is secured to the elastomer diaphragm with epoxy (for example, Epoxy, Stock #14250, available from ITW Devcon, of Danvers, Mass.). The ends of the shape memory alloy wire-copper conductor assembly are connected to the plunger and to the rigid restraint with epoxy. A stainless steel biasing spring has an overall length of 12.7 mm, an outside diameter of 3.0 mm, a wire diameter of 0.35 mm and a spring constant of 0.9 N/mm (for example, Biasing Spring, Cat. # C0120-014-0500, available from Associated Spring, of Dallas, Tex.).

A pulse generating circuit is comprised of an adjustable analog timing circuit based on a 556 dual timing integrated circuit (for example, 556 Dual Timing Circuit, Part # TS3V556, available from ST Microelectronics, of San Jose, Calif.). Power is supplied by a 3 V lithium-manganese dioxide primary cell (for example, Li/MgO₂ Battery, Part # DL2032, available from Duracell, of Bethel, Conn.). Power load leveling is facilitated by the use of an electrochemical supercapacitor (for example, Electrochemical Supercapacitor, Part # B0810, available from PowerStor Inc., of Dublin, Calif.) in parallel with the battery. High-power switching is achieved with a field effect transistor (for example, Field Effect Transistor Switch, Part # IRLZ24N, available from International Rectifier, of El Segundo, Calif.).

The functional model was characterized with respect to reproducibility, insulin stability and energy consumption. The model was operated by heating the shape memory alloy wire with a short pulse of current and then allowing the shape memory alloy wire to cool. Each heating pulse and subsequent cooling period comprised a single actuation cycle.

A device that is used to automatically deliver a drug to an individual over an extended period of time should do so with extreme precision. This is particularly critical when the drug being delivered is one that might have dangerous health consequences associated with an inappropriate dose. Insulin is one such drug. An excessive dose of insulin can result in dangerously low blood glucose level, which in turn can lead to coma and death. Thus any device to be used for automatically delivering insulin to a diabetic person must be able to demonstrate a very high level of precision. To characterize the precision with which the invention can deliver insulin, the functional model was repeatedly cycled at a constant period of actuation and the total quantity of liquid delivered was measured as a function of the number of actuation cycles. FIG. 5 shows typical results. The data in FIG. 5 were obtained with an actuation period of 28 seconds and a pulse duration of 0.15 seconds. In FIG. 5 markers show actual data points and the line represents a least squares fit of the data points. Data were collected over 8500 cycles at which point the measure-

ment was stopped. The fit to the data has a slope of 1.997 mg/cycle and a linear correlation coefficient of 0.999 indicating that the functional model delivered extremely consistent volumes of liquid with each actuation over the course of the measurement.

Another important requirement for any medical device that handles insulin is that the device does not damage the insulin. Insulin is a large and delicate biomolecule that can readily be damaged by the mechanical action (e.g., shear stress) of a pumping device. Three common modes of insulin destruction which result in a loss of bioactivity are aggregation, where individual insulin molecules bond together to form various polymer structures, degradation, where individual insulin molecules are broken apart, and denaturing, where individual molecules remain intact but lose their characteristic conformation. All three modes of insulin destruction are exacerbated by elevated temperatures. Thus, in the development of a practical insulin pumping device, preferably, it should be demonstrated that the device does not damage insulin. To characterize the insulin stability associated with the invention, a quantity of insulin (Insulin, Humalog U100, available from Eli Lilly, of Indianapolis, Ind.) was set up to recycle continuously through the functional model over the course of several days at 37° C. Samples of the insulin were collected each day for evaluation. This resulted in a series of pumped insulin samples with an increasing amount of pump stress. The insulin samples were then analyzed by reverse-phase high performance liquid chromatography. The chromatography indicated a 2% loss of insulin concentration after a single pass through the pump and a further loss of another 5% of the insulin concentration after 3 days of recycling.

It is desirable for a small and inexpensive insulin delivery device to be able to execute its maximum intended term of use with the energy from a single small inexpensive primary battery. Based on a 0.1 unit dose size and a maximum insulin consumption of 100 units per day for 3 days, a maximum term of use for the inventive device might be considered to be 3000 cycles. To characterize the energy consumption of the invention, the functional model was operated continuously for several days at an actuation period of 85 seconds while the voltage of a 200 milliamp-hour, 2032 lithium/manganese dioxide battery was monitored. FIG. 6 shows typical results. A typical voltage vs. capacity curve for the lithium/manganese dioxide battery is characterized by an initial drop in voltage from about 3.2 V to a plateau voltage of about 2.8 V. The voltage of the battery remains at this plateau level for the duration of its useful life. The battery voltage will then drop precipitously to a value below 2 V when its capacity expires. The data in FIG. 6 indicate that the battery is still at its plateau voltage after 4000 pump cycles and thus the 200 milliamp-hour, lithium/manganese dioxide battery is more than adequate to power the device of the present invention for its intended term of use.

Alternative Embodiments of the Invention

A first alternative embodiment of the invention is diagrammed schematically in FIG. 7 and is comprised of all of the same subcomponents and elements of the most general embodiment of the invention shown in FIG. 1 with the following exceptions. In a first alternative embodiment of the invention, the displacement cavity, as well as the inlet and outlet conduit, are all comprised of a single length of small-diameter flexible and resilient tubing **701**. The tubing **701** is situated within a restraining fixture **702** secured to a rigid base **703** so as to fix the position and orientation of the tubing **701** relative to the other elements of the device. Inlet **704** and

11

outlet 705 check valves are located within the bore of the tubing 701 such that they have a common orientation for flow direction and such that a length of empty tubing 701 exists in between the two check valves 704, 705. The volume within the inner diameter of the tubing 701 and in between the two check valves 704, 705 comprises a displacement cavity 706. The volume of the displacement cavity 706 is varied by compressing the resilient tubing 701 with a plunger 707 (described below) at a position midway between the two check valves 704, 705. The volume within the inner diameter of the tubing 701 and in between the two check valves 704, 705 when the tubing 701 is uncompressed defines the maximum volume of displacement cavity 706. The volume within the inner diameter of the tubing 701 and in between the two check valves 703, 704 when the tubing 701 is fully compressed by the plunger 707 defines the minimum volume of the displacement cavity 705.

The plunger 707 is comprised of a cylindrical length of rigid dielectric material and includes a flange 708 and a tapered end 709. The plunger 707 is situated within a cylindrical bore 710 of a rigid restraint 711 such that the axis of the plunger 707 is oriented normal to the axis of the resilient tubing 701 and such that the tapered head 709 of the plunger 707 may be alternately pressed against the resilient tubing 701 and removed from contact with the resilient tubing 701 with movement of the plunger 707 along a line of motion coincident with the its axis. A biasing spring 712 is fitted around the shaft of the plunger 707 in between the rigid restraint 711 and the plunger flange 708. The relative positions and dimensions of the plunger 707, the rigid restraint 711 and the biasing spring 712 are such that at equilibrium the biasing spring 712 exerts a force on the plunger 707 along a line coincident with its axis that is sufficient to fully collapse the resilient tubing 701 and thus create a state of minimum volume of the displacement cavity 706.

A straight length of shape memory alloy wire 713 is situated in a position coincident with the axis of the plunger 707. One end of the shape memory alloy wire 713 is attached to the rigid base 703 and electrically connected by connection 716 to the pulse generating circuit 714 and the electric power source 715. The other end of the shape memory alloy wire 713 along with an electrical connection 717 to that end is attached to the shaft of the plunger 707. The shape memory alloy wire 713 is of sufficient length and strength that when heated so as to induce phase transition and associated dimensional change it will pull the plunger 707 away from contact with the resilient tubing 701 against the opposing force of the biasing spring 713.

A second alternative embodiment of the invention is diagrammed schematically in FIG. 8 and is comprised of all of the same subcomponents and elements of the most general embodiment of the invention shown in FIG. 1 with the following exceptions. A displacement cavity 801 is comprised of a cylindrical shell 802 and tube 803 arrangement where the tube 803 is coaxial with the shell 802 and can move freely within the shell 802 along a line coincident with that axis. The volume of the displacement cavity 801 is varied by moving the tube 803 relative to the shell 802. Movement of the tube 803 into the shell 802 reduces the volume of the displacement cavity 801 whereas movement of the tube out of the shell increases the volume of the displacement cavity 801. A dynamic seal 804, for example and elastomer o-ring, seals the displacement cavity 801 while not interfering adversely with the relative motion of the shell 802 and tube 803. Outlet 805 and inlet 806 conduits access the displacement cavity 801 through the ends of the shell 802 and tube 803 respectively. Outlet 807 and inlet 808 check valves are situated within the

12

shell 802 and tube 803 respectively. A biasing spring 809 is situated within the displacement cavity 801 so as to resist the motion of the displacement cavity 801 toward a state of reduced volume. A shape memory alloy wire 810 is attached between the shell 802 and the tube 803 along the outside of the assembly such that when the shape memory alloy wire 810 is heated so as to induce phase transition and associated dimensional change it will incline the displacement cavity 801 toward a state of reduced volume. The shape memory alloy wire 810 is electrically connected by connector 811 to a programmable pulse generating circuit 812 and a source of electric power 813. Hard stops (not shown) on the limits of the relative positions of the shell 802 and tube 803 define the maximum and minimum volumes of the displacement volume 801.

Operation of both the first and second alternative embodiments of the invention proceed in a manner analogous to that described for the most general embodiment and preferred embodiment of the invention.

In all of the embodiments described above, a shape memory alloy wire acts as an actuator to drive a movable member to increase or decrease the fluid volume in the pump head, and once the wire cools a spring is used to return the movable member back to its original position. Those of reasonable skill in this field will appreciate that a multitude of other biasing means exist, one or more of which can be used in place of or in addition to the spring. In fact, a shape memory alloy can be constructed in such a way that it drives the movable member in both directions to act as both an actuator and a return biasing element. For example, the shape memory alloy can be coiled much like a spring to drive the movable member in one direction when heated and in the other direction when cooled.

A first alternative embodiment of a pulse generating circuit is diagrammed schematically in FIG. 9 and is comprised of a 200 milliamp-hour lithium-manganese dioxide primary battery 901, a DC to DC converter 902, a capacitor 903, a low-resistance field effect transistor switch 904, a programmable digital timing circuit 905, an inductor 906 and a diode 908. The shape memory alloy wire is indicated in FIG. 9 symbolically as a resistor 907. The objective of this embodiment of a pulse generating circuit is that the pulses of power delivered to the shape memory alloy wire 907 can be of a higher voltage, and thus higher current, than that associated with the preferred embodiment of a pulse generating circuit diagrammed in FIG. 4 and described previously. A high voltage, high current power pulse has the advantage that it can actuate the circuit in a shorter more efficient time period. Additionally, the alternative embodiment of a pulse generating circuit allows the useful life of the battery 901 to be extended to a lower voltage and can prevent other circuitry powered by the battery from resetting when the battery voltage droops as is likely to happen in the preferred embodiment. The battery 901 and capacitor 903 are electrically connected to each other in parallel through the DC to DC converter 902. The capacitor 903 is further connected to the shape memory alloy wire 907 through the transistor switch 904. The programmable timing circuit 905, also powered by the battery 901 sends a gating signal to the transistor switch 904 as programmed by the user in accordance with their pumping requirements. During the period for which the transistor switch 904 is open, the DC to DC converter 902 draws energy from the battery 901 and stores it in the capacitor 903. Use of the DC to DC converter 902 allows the voltage of the capacitor 903 to be charged to a significantly higher value than that associated with the battery 901 and to be charged to the same voltage throughout the life of the battery 901 regardless of the

13

battery voltage. It is intended that the transistor switch **904** may be modulated to send an overall energy pulse as a single pulse or as a sequence of discrete smaller pulses. It is intended that these smaller pulses may be sequenced so as to tailor a custom profile for the overall energy pulse. The custom profile would ensure optimal energy delivery to the shape memory alloy without exceeding its fusing characteristics. The inclusion of the inductor **906** and diode **908** allows current to continue to flow through the shape memory alloy wire **907** after the transistor switch **904** is opened when the pulse is modulated. This allows further control of the energy delivered to the shape memory alloy.

Various references, publications, provisional and non-provisional United States patent applications, and/or United States patents, have been identified herein, each of which is incorporated herein in its entirety by this reference. Various aspects and features of the present invention have been explained or described in relation to beliefs or theories or underlying assumptions, although it will be understood that the invention is not bound to any particular belief or theory or underlying assumption. Various modifications, processes, as well as numerous structures to which the present invention may be applicable will be readily apparent to those of skill in the art to which the present invention is directed, upon review of the specification. Although the various aspects and features of the present invention have been described with respect to various embodiments and specific examples herein, it will be understood that the invention is entitled to protection within the full scope of the appended claims.

The invention claimed is:

1. A diabetes management system for treating a patient, comprising:

an insulin pump having a plunger for reciprocating movement in a cavity, a shape memory alloy wire attached to the plunger to move the plunger in a first direction in the cavity and a biasing spring attached to the plunger to move the plunger in a second direction in the cavity opposite to the first direction;

a timing circuit and an electrical energy storage device for activating the shape memory alloy wire; and

a remote unit for wirelessly communicating with the insulin pump.

2. The diabetes management system of claim 1, wherein a blood glucose monitor wirelessly communicates with the remote unit and the insulin pump to coordinate delivery of insulin to the patient.

3. The diabetes management system of claim 2, wherein the blood glucose monitor and at least a portion of the insulin pump are disposable, and wherein the remote unit and timing circuit are reusable.

4. The diabetes management system of claim 2, wherein the insulin pump and the timing circuit are integrated into a single housing.

5. The diabetes management system of claim 4, wherein the insulin pump is disposable and the shape memory alloy wire, timing circuit, and electrical energy storage device are reusable.

6. The diabetes management system of claim 1, wherein the electrical energy storage device is a battery.

7. The diabetes management system of claim 6, wherein the battery is connected to an electrochemical capacitor having a high capacitance and low-equivalent series resistance.

8. The diabetes management system of claim 7, wherein the capacitor provides electrical energy to the shape memory alloy wire.

9. The diabetes management system of claim 1, wherein the cavity has a first limit and a second limit to limit the

14

distance the plunger moves within the cavity thereby providing a precise amount of insulin delivery per plunger stroke.

10. The diabetes management system of claim 8, wherein as the shape memory alloy wire is heated by electrical energy from the electrical energy storage device and the capacitor, the wire shortens and moves the plunger in the cavity to the first limit thereby pulling insulin into the cavity from an insulin reservoir.

11. The diabetes management system of claim 10, wherein the insulin reservoir is collapsible.

12. The diabetes management system of claim 9, wherein as the shape memory alloy wire cools, the biasing spring moves the plunger in the cavity to the second limit thereby pushing insulin out of the cavity and into the patient.

13. The diabetes management system of claim 11, wherein the electrical energy storage device is a replaceable battery.

14. The diabetes management system of claim 7, wherein the battery provides electrical energy to the capacitor.

15. The diabetes management system of claim 14, wherein the battery provides electrical energy to the timing circuit.

16. The diabetes management system of claim 15, wherein the timing circuit is a programmable digital timing circuit.

17. The diabetes management system of claim 16, wherein the timing circuit includes a transistor switch.

18. The diabetes management system of claim 17, wherein the battery and the capacitor are connected to each other in parallel and are connected to the shape memory alloy wire through the transistor switch.

19. The diabetes management system of claim 18, wherein the battery charges the capacitor with electrical energy when the transistor switch is open.

20. The diabetes management system of claim 19, wherein the capacitor provides electrical energy to the shape memory alloy wire when the transistor switch is closed.

21. The diabetes management system of claim 1, wherein the shape memory alloy wire is up to 40 mm long.

22. The diabetes management system of claim 1, wherein the shape memory alloy wire is 125 microns in diameter.

23. The diabetes management system of claim 1, wherein the plunger is attached to the shape memory alloy wire.

24. The diabetes management system of claim 1, wherein the plunger is attached to a pivoting linkage assembly.

25. The diabetes management system of claim 1, wherein the shape memory alloy wire and the biasing spring are attached to a pivoting linkage assembly for imparting reciprocating movement to the plunger.

26. The diabetes management system of claim 1, wherein the plunger pumps 0.1 microliter of insulin into the patient per each pump cycle.

27. The diabetes management system of claim 26, wherein the insulin pump has an effective maximum of 3000 cycles.

28. The diabetes management system of claim 1, wherein the timing circuit generates an electrical pulse duration lasting about 0.15 seconds.

29. A diabetes management system for treating a patient, comprising:

a blood of glucose monitor for collecting blood glucose levels in the patient; an insulin pump having a plunger for reciprocating movement in a cavity, a shape memory alloy wire attached to the plunger to move the plunger in a first direction in the cavity and a biasing spring attached to the plunger to move the plunger in a second direction in the cavity opposite to the first direction;

a timing circuit and a battery for providing electrical energy to the shape memory alloy wire; and

a remote unit for wirelessly communicating with the blood glucose monitor and the insulin pump.

15

30. The diabetes management system of claim 29, wherein the blood glucose monitor wirelessly communicates with the remote unit and the insulin pump to coordinate delivery of insulin to the patient.

31. The diabetes management system of claim 29, wherein the blood glucose monitor and at least a portion of the insulin pump are disposable, and wherein the remote unit and timing circuit are reusable.

32. The diabetes management system of claim 29, wherein the insulin pump and the timing circuit are integrated into a single housing.

33. The diabetes management system of claim 29, wherein the insulin pump is disposable and the shape memory alloy wire, timing circuit, and the battery are reusable.

34. The diabetes management system of claim 29, wherein the battery is connected to an electrochemical capacitor having a high capacitance and low-equivalent series resistance.

35. The diabetes management system of claim 34, wherein as the shape memory alloy wire is heated by electrical energy from the battery and/or the capacitor, the wire shortens and moves the plunger in the cavity to the first limit thereby drawing insulin into the cavity from an insulin reservoir.

36. The diabetes management system of claim 35, wherein the insulin reservoir is collapsible.

37. The diabetes management system of claim 36, wherein as the shape memory alloy wire cools, the biasing spring moves the plunger in the cavity to the second limit thereby pushing insulin out of the cavity and into the patient.

38. The diabetes management system of claim 29, wherein the battery is a replaceable battery.

39. The diabetes management system of claim 37, wherein the battery provides electrical energy to the capacitor.

40. The diabetes management system of claim 29, wherein the battery provides electrical energy to the timing circuit.

41. The diabetes management system of claim 40, wherein the timing circuit is a programmable digital timing circuit.

16

42. The diabetes management system of claim 41, wherein the timing circuit includes a transistor switch.

43. The diabetes management system of claim 35, wherein the battery and the capacitor are connected to each other in parallel and are connected to the shape memory alloy wire through the transistor switch.

44. The diabetes management system of claim 43, wherein the battery charges the capacitor with electrical energy when the transistor switch is open.

45. The diabetes management system of claim 44, wherein the capacitor provides electrical energy to the shape memory alloy wire when the transistor switch is closed.

46. The diabetes management system of claim 29, wherein the shape memory alloy wire is up to 40 mm long.

47. The diabetes management system of claim 29, wherein the shape memory alloy wire is 125 microns in diameter.

48. The diabetes management system of claim 29, wherein the plunger is attached to the shape memory alloy wire.

49. The diabetes management system of claim 29, wherein the cavity has a first limit and a second limit to limit the distance the plunger moves within the cavity thereby providing a precise amount of insulin delivery per plunger stroke.

50. The diabetes management system of claim 29, wherein the plunger is attached to a pivoting linkage assembly.

51. The diabetes management system of claim 29, wherein the shape memory alloy wire and the biasing spring are attached to a pivoting linkage assembly for imparting reciprocating movement to the plunger.

52. The diabetes management system of claim 29, wherein the plunger pumps 0.1 microliter of insulin into the patient per each pump cycle.

53. The diabetes management system of claim 29, wherein the insulin pump has an effective maximum of 3000 cycles.

54. The diabetes management system of claim 29, wherein the timing circuit generates an electrical pulse duration lasting about 0.15 seconds.

* * * * *