

US009082124B2

(12) **United States Patent**  
**Davis, Jr.**

(10) **Patent No.:** **US 9,082,124 B2**  
(45) **Date of Patent:** **Jul. 14, 2015**

(54) **SYSTEM AND METHOD FOR TRACKING AUTHENTICATED ITEMS**

(71) Applicant: **PROVA GROUP, INC.**, Dallas, TX (US)

(72) Inventor: **Tommy L. Davis, Jr.**, Florissant, MO (US)

(73) Assignee: **Prova Group, Inc.**, Dallas, TX (US)

(\*) Notice: Subject to any disclaimer, the term of this patent is extended or adjusted under 35 U.S.C. 154(b) by 0 days.

(21) Appl. No.: **14/553,930**

(22) Filed: **Nov. 25, 2014**

(65) **Prior Publication Data**

US 2015/0081475 A1 Mar. 19, 2015

**Related U.S. Application Data**

(63) Continuation of application No. 13/556,002, filed on Jul. 23, 2012, now Pat. No. 8,898,077, which is a continuation of application No. 10/694,311, filed on Oct. 27, 2003, now Pat. No. 8,234,185, which is a continuation-in-part of application No. 10/038,292, filed on Jan. 4, 2002, now abandoned.

(51) **Int. Cl.**

**G06G 1/14** (2006.01)

**G06Q 20/00** (2012.01)

**G06Q 10/00** (2012.01)

**G06Q 30/06** (2012.01)

**G06Q 20/32** (2012.01)

**G06Q 30/00** (2012.01)

(52) **U.S. Cl.**

CPC ..... **G06Q 30/012** (2013.01); **G06Q 20/3276** (2013.01); **G06Q 30/0609** (2013.01)

(58) **Field of Classification Search**

CPC ..... G06Q 10/06312; G06Q 10/06; G06Q 10/0635; G06Q 10/0833; G06Q 10/08

USPC ..... 705/28, 22, 333  
See application file for complete search history.

(56) **References Cited**

**U.S. PATENT DOCUMENTS**

4,636,950	A *	1/1987	Caswell et al.	705/28
4,686,515	A *	8/1987	Anderson et al.	340/5.8
4,688,026	A *	8/1987	Scribner et al.	235/385
4,816,824	A *	3/1989	Katz et al.	340/5.86
4,857,716	A *	8/1989	Gombrich et al.	235/375
5,050,031	A *	9/1991	Weiley	360/137
5,267,756	A *	12/1993	Molee et al.	283/86
5,288,980	A *	2/1994	Patel et al.	235/381
5,963,133	A *	10/1999	Monjo	340/572.1
5,963,134	A *	10/1999	Bowers et al.	340/572.1
5,963,919	A *	10/1999	Brinkley et al.	705/28
5,971,435	A *	10/1999	DiCesare et al.	283/70
6,002,344	A *	12/1999	Bandy et al.	340/10.2

(Continued)

*Primary Examiner* — Seye Iwarere

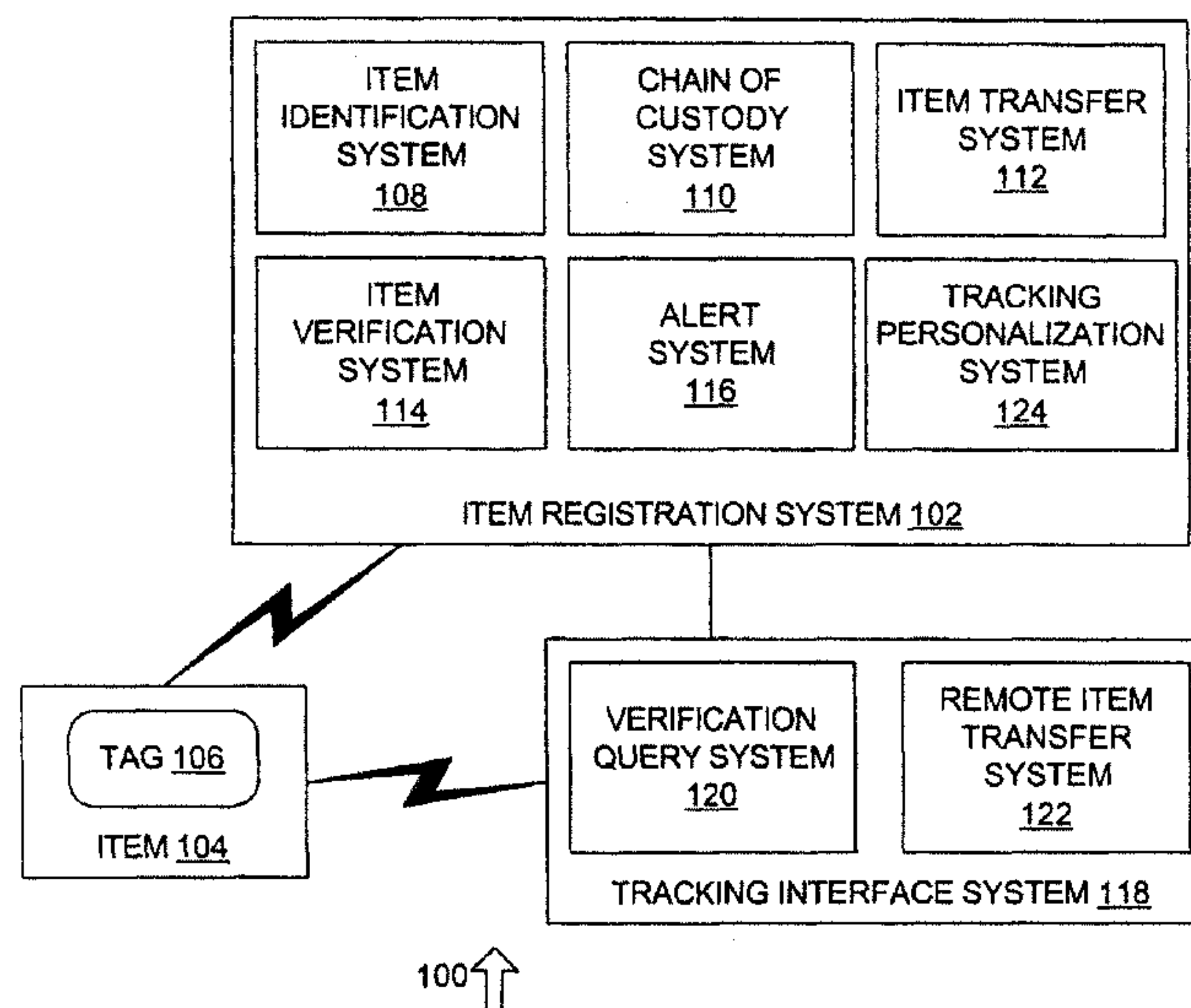
(74) *Attorney, Agent, or Firm* — Jackson Walker L.L.P.; Christopher J. Rourk

(57)

**ABSTRACT**

A system for tracking an authenticated item is provided. The system includes an authentication device affixed to the item. An item registration system receives authentication device data from the authentication device and associated item data and stores the authentication device data and the associated item data. An owner registration system receives owner registration data after a buyer has acquired the item. A buyer verification system receives the authentication device data, the associated item data and the owner registration data and stores buyer verified data if the associated item data correlates to the owner registration data, such as if the external tag number or event data entered by the owner matches external tag number or event data for the item.

**19 Claims, 6 Drawing Sheets**



(56)

References Cited

U.S. PATENT DOCUMENTS

6,026,378 A \*

2/2000

Onozaki

705/28

6,346,885 B1 \*

2/2002

Curkendall

340/572.4

2002/0005774 A1 \*

1/2002

Rudolph et al.

340/5.61

2003/0007464 A1 \*

1/2003

Balani

370/310

2003/0034390 A1 \*

2/2003

Linton et al.

235/382

2003/0069648 A1 \*

4/2003

Douglas et al.

700/2

2003/0105555 A1 \*

6/2003

Lunak et al.

700/237

2003/0220885 A1 \*

11/2003

Lucarelli et al.

705/64

2004/0088231 A1 \*

5/2004

Davis, Jr.

705/28

2004/0122735 A1 \*

6/2004

Meshkin

705/14

2004/0171381 A1 \*

9/2004

Inselberg

455/426.2

2005/0289061 A1 \*

12/2005

Kulakowski et al.

705/50

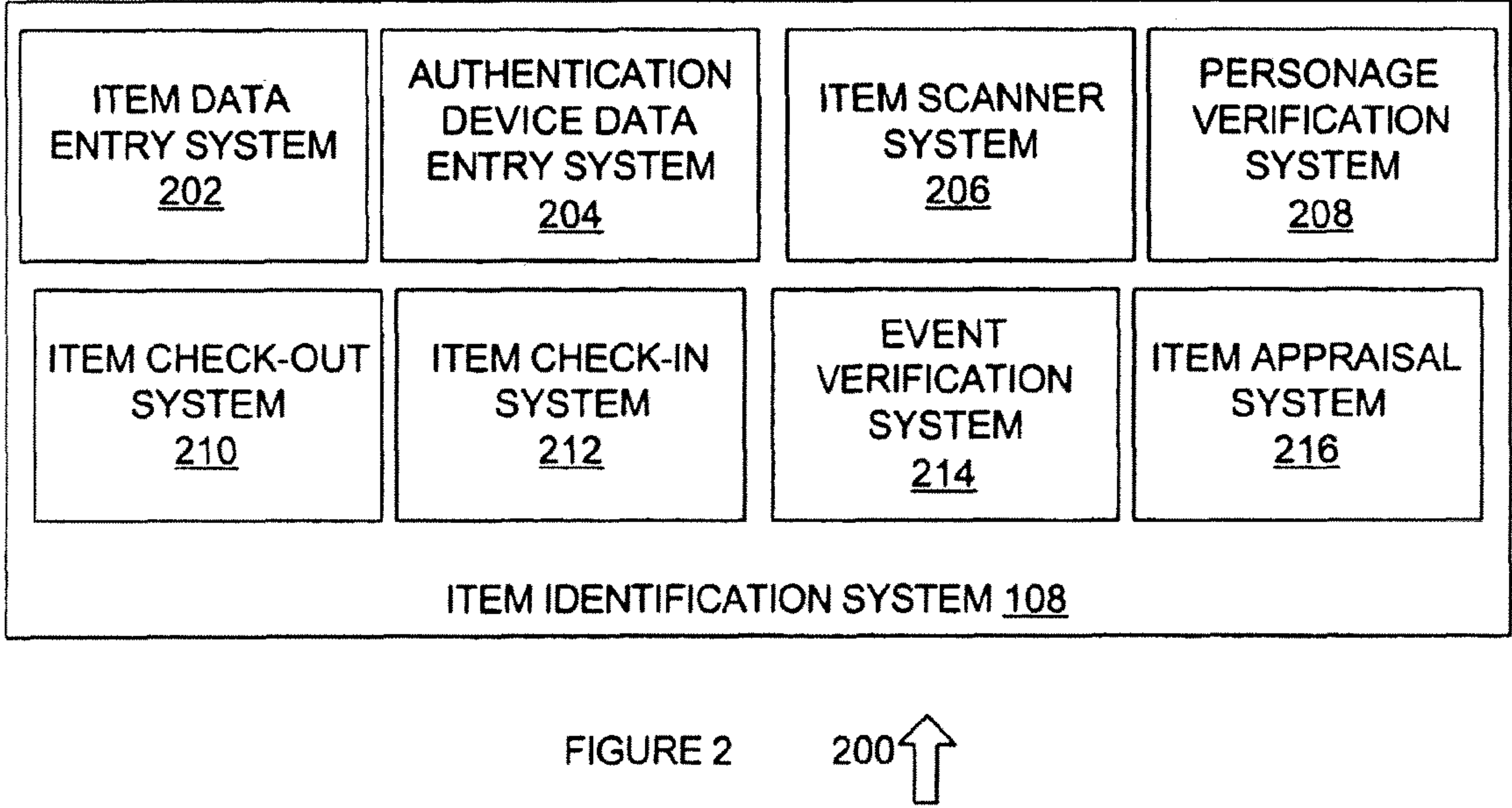
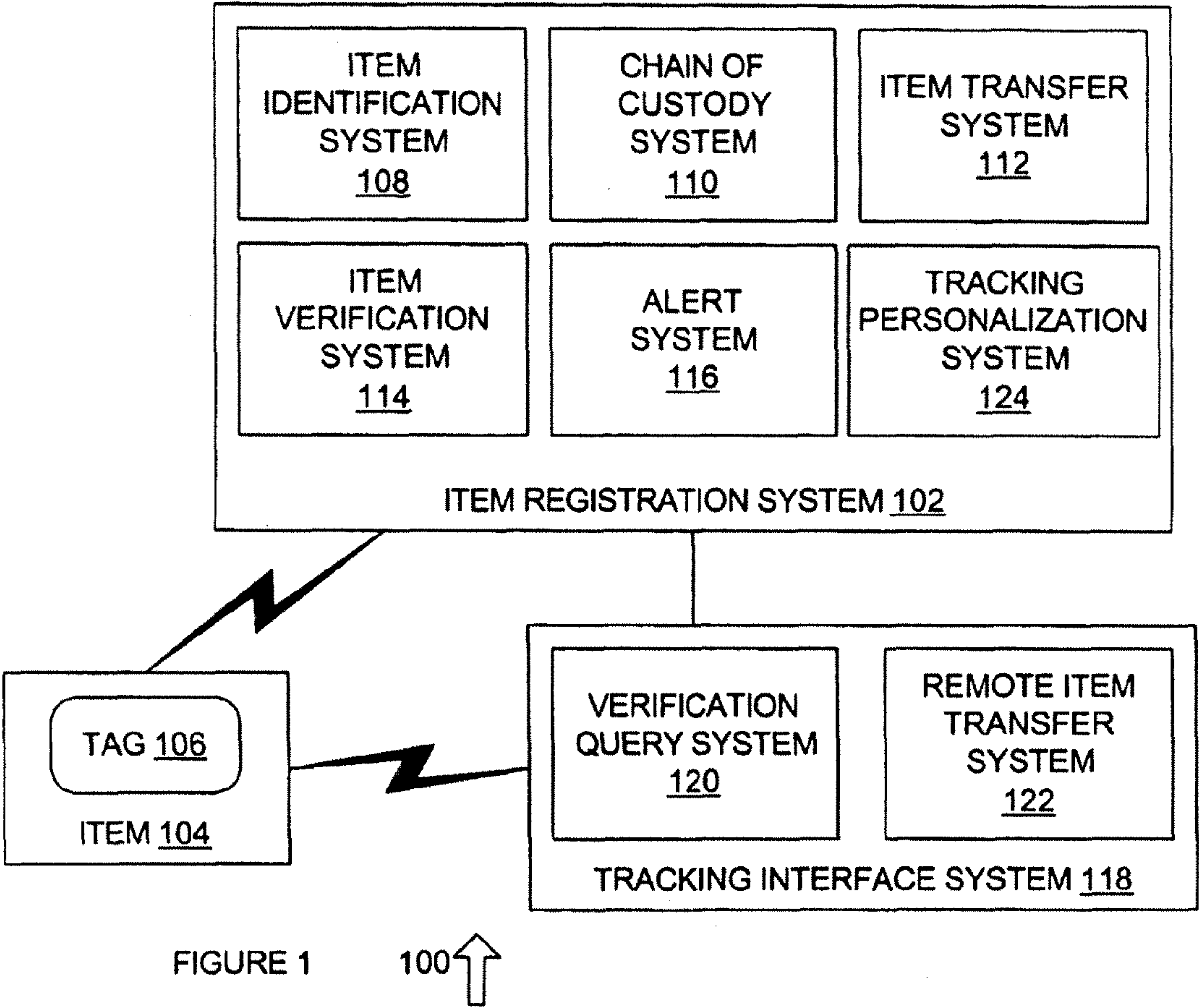
2006/0190384 A1 \*

8/2006

Gurley et al.

705/37

\* cited by examiner





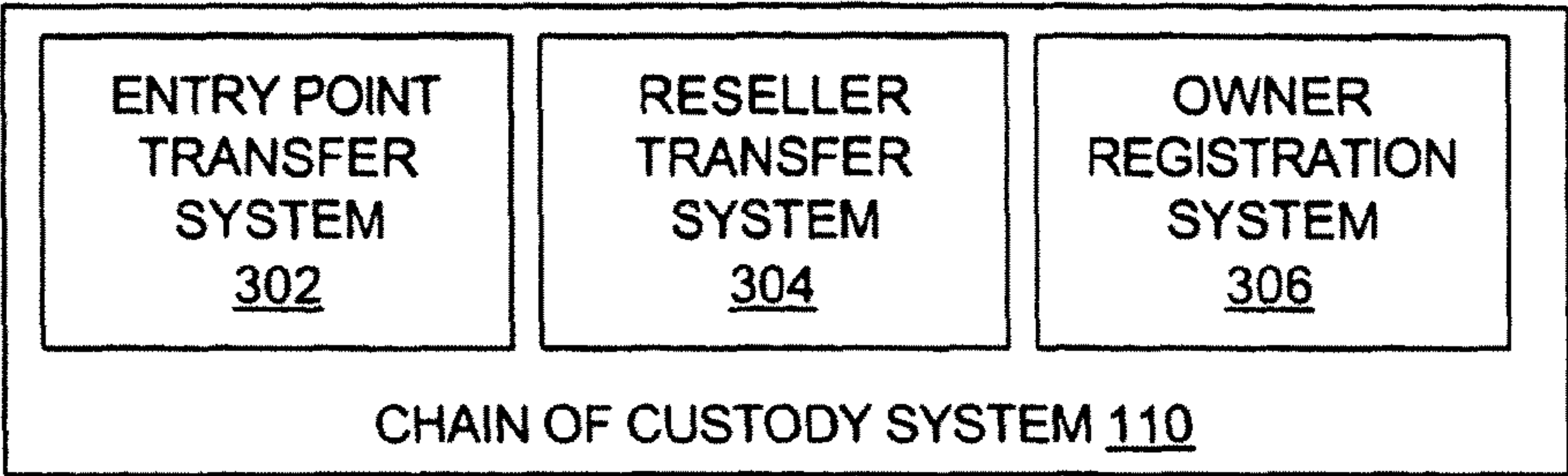


FIGURE 3      300↑

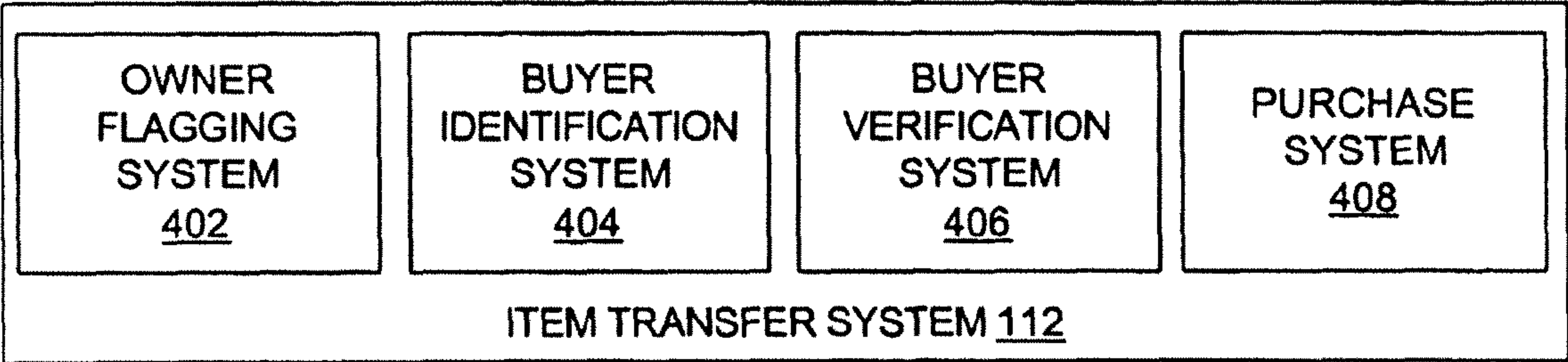


FIGURE 4      400↑

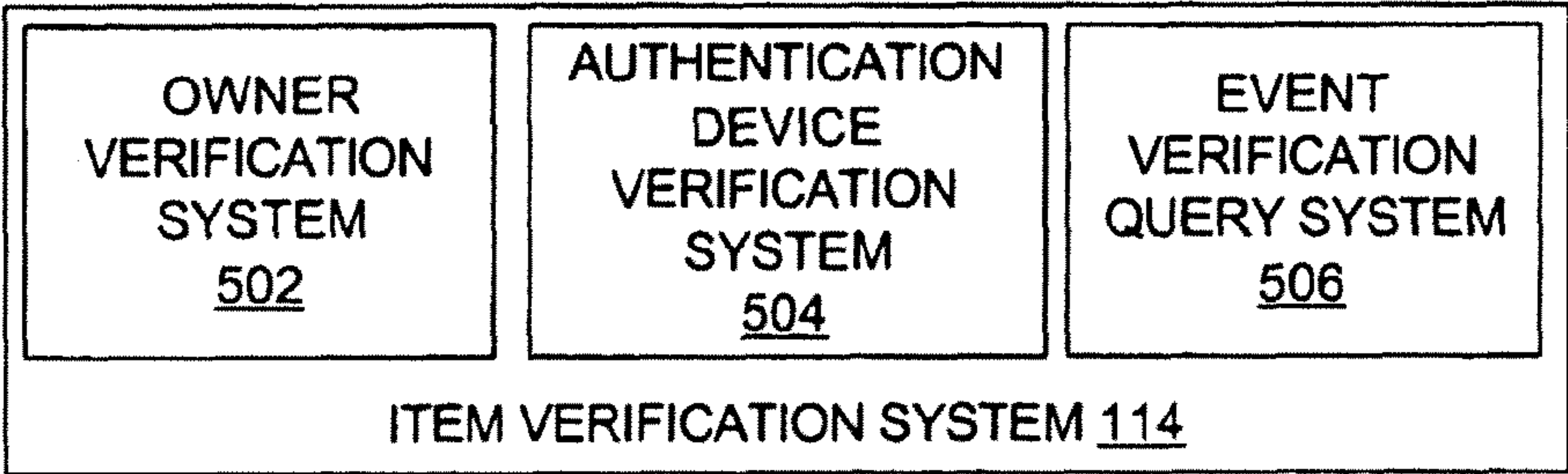


FIGURE 5      500↑

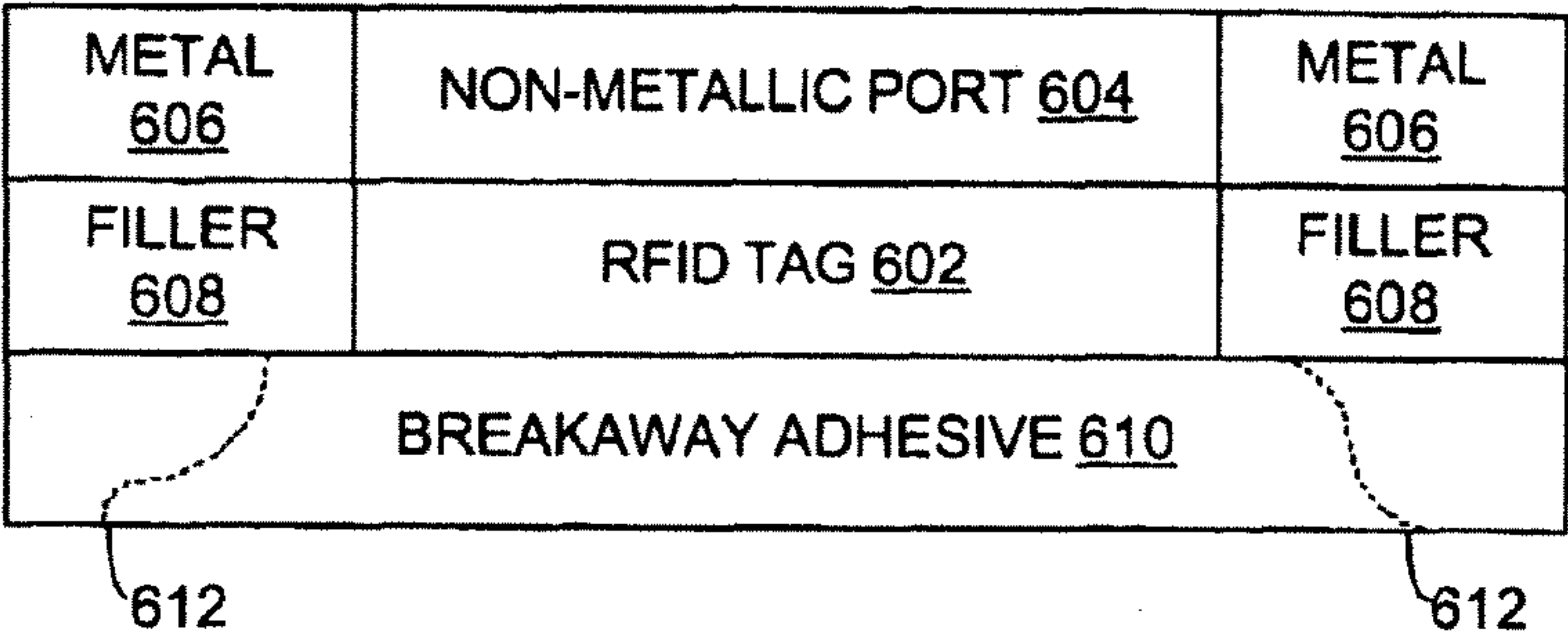


FIGURE 6 600

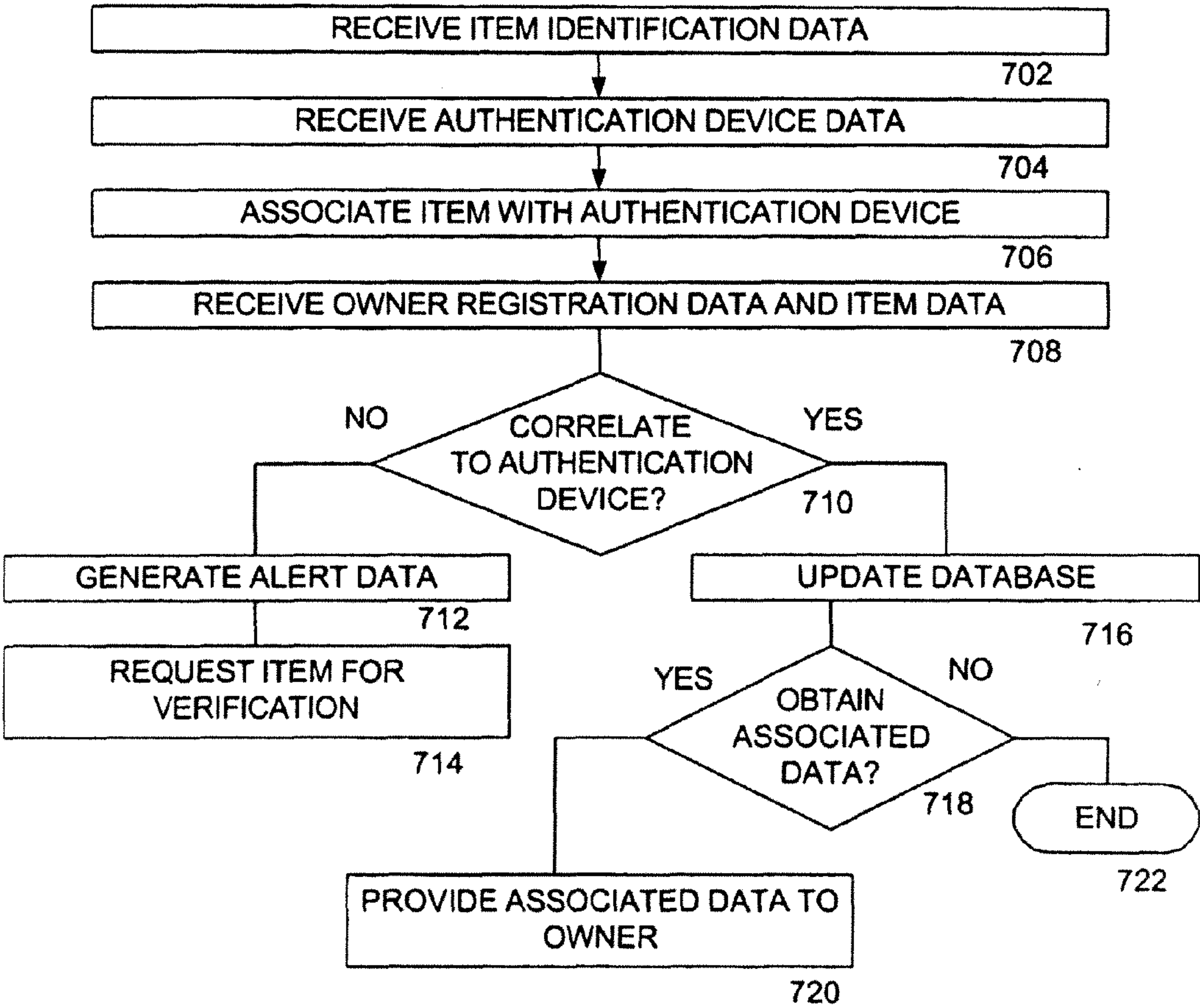
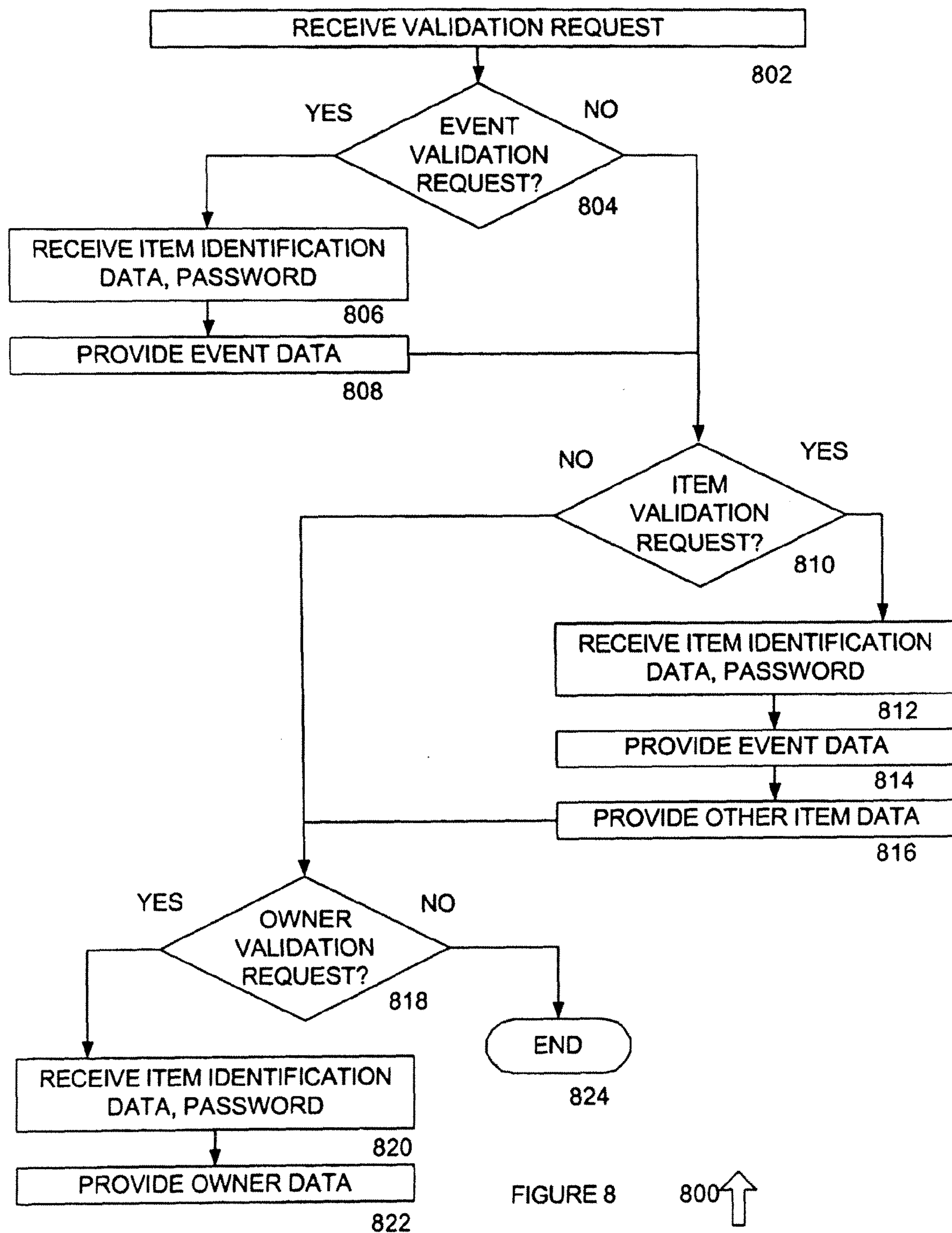


FIGURE 7 700





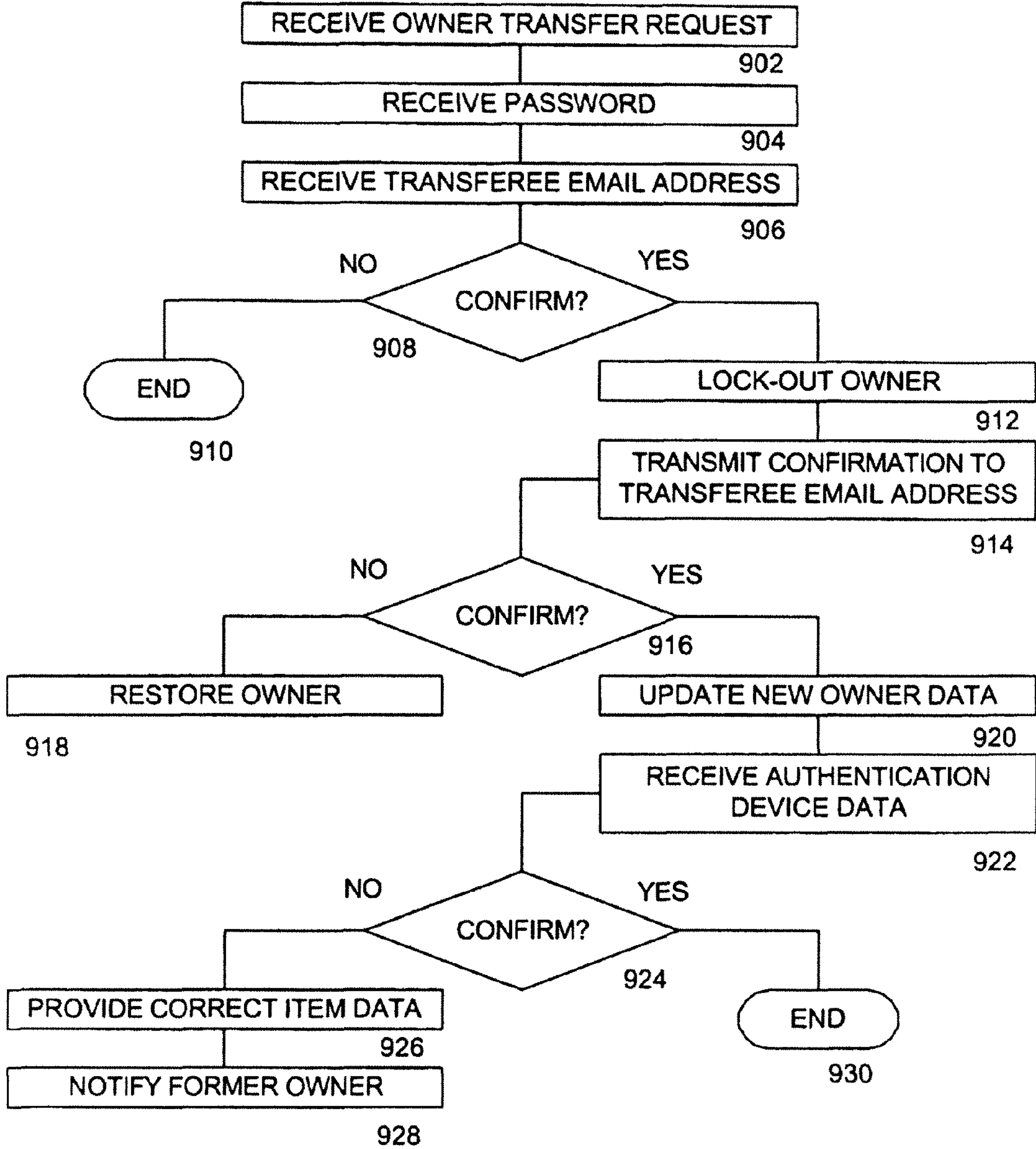
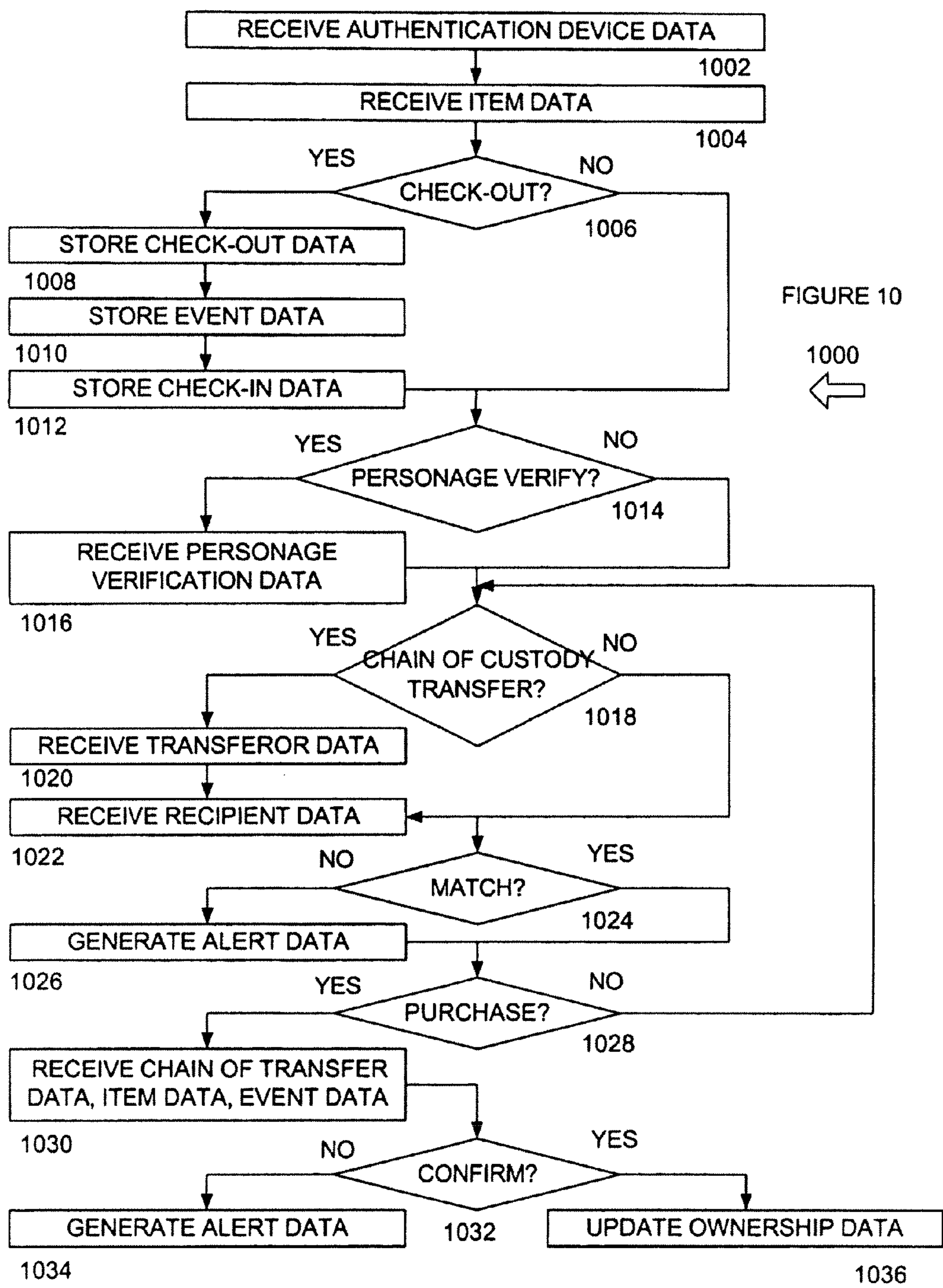


FIGURE 9

900 ↑





## 1

SYSTEM AND METHOD FOR TRACKING  
AUTHENTICATED ITEMSCROSS-REFERENCE TO RELATED  
APPLICATIONS

This application is a continuation of U.S. patent application Ser. No. 13/556,002, filed Jul. 23, 2012, now U.S. Pat. No. 8,898,077, which is a continuation of U.S. patent application Ser. No. 10/694,311, filed Oct. 27, 2003, now U.S. Pat. No. 8,234,185, which is a continuation-in-part of abandoned U.S. patent application Ser. No. 10/038,292, filed Jan. 4, 2002, which are hereby incorporated by reference for all purposes.

## FIELD OF THE INVENTION

The present invention pertains to the field of item tracking systems, and more particularly to a system and method for tracking authenticated items that allows items to be tracked after delivery to an ultimate consumer, such as sports memorabilia or other items that appreciate over time.

## BACKGROUND OF THE INVENTION

Inventory tracking systems are known in the art. Such inventory tracking systems allow inventory to be received and tracked to determine quantities on hand, when reordering is required, or to perform other suitable functions.

Although inventory tracking systems can be used to control inventory at one or several locations, such inventory tracking systems generally do not track the inventory once it has been purchased by the ultimate consumer. Thus, while an inventory tracking system may track the current state of an object, it does not track the state of an object as it changes over time after it has been delivered. Likewise, databases for tracking object ownership, such as warranty registration databases or other similar databases, generally do not track the change of state of the object. Likewise, such databases have limited functionality, and are only used to determine whether a product has been registered to receive warranty services, and to send notices to product owners when repairs that are covered under the warranty may be needed.

## SUMMARY OF THE INVENTION

In accordance with the present invention, a system and method for tracking and authenticating items are provided that overcome known problems with tracking and authenticating items.

In particular, a system and method for tracking and authenticating items are provided that allow items to be tracked over time after they are acquired by a consumer, such as items that appreciate in value.

In accordance with an exemplary embodiment of the present invention, a system for tracking an authenticated item is provided. The system includes an authentication and/or tracking device, such as a Radio Frequency Identification ("RFID") tag, affixed to the item. An item registration system receives authentication and/or tracking device data from the authentication and/or tracking device (such as an external and internal RFID tag number) and associated item data (such as a description of the item, the name of an athlete that used the item, or a sporting event that the item was used at) and stores the authentication and/or tracking device data and the associated item data. An owner registration system receives owner registration data (such as owner identification data and an

## 2

external tag number) after a buyer has acquired the item. A buyer verification system receives the authentication device data, the associated item data and the owner registration data and stores buyer verified data if the associated item data correlates to the owner registration data, such as if the external tag number or event data entered by the owner matches external tag number or event data for the item.

The present invention provides many important technical advantages. One important technical advantage of the present invention is a system and method for tracking and authenticating items that improve the ability to determine whether an item is authentic by tracking its history, such as prior to and after the occurrence of an event, the use of the item by a celebrity, or other suitable information.

Those skilled in the art will further appreciate the advantages and superior features of the invention together with other important aspects thereof on reading the detailed description that follows in conjunction with the drawings.

## BRIEF DESCRIPTION OF THE DRAWINGS

FIG. 1 is a diagram of a system for tracking an authenticated item in accordance with an exemplary embodiment of the present invention;

FIG. 2 is a diagram of system for providing item identification for item authentication in accordance with an exemplary embodiment of the present invention;

FIG. 3 is a diagram of a system for providing chain of custody control in accordance with an exemplary embodiment of the present invention;

FIG. 4 is a diagram of a system for allowing an item to be transferred from an owner to another purchaser in accordance with an exemplary embodiment of the present invention;

FIG. 5 is a diagram of a system for providing item verification data in accordance with an exemplary embodiment of the present invention;

FIG. 6 is a diagram of an authentication device in accordance with an exemplary embodiment of the present invention;

FIG. 7 is a flowchart of a method for providing authentication data for an item in accordance with an exemplary embodiment of the present invention;

FIG. 8 is a flowchart of a method for providing validation data in accordance with an exemplary embodiment of the present invention;

FIG. 9 is a flowchart of a method for allowing an item to be transferred in accordance with an exemplary embodiment of the present invention; and

FIG. 10 is a flowchart of a method for providing chain of custody control in accordance with an exemplary embodiment of the present invention.

DETAILED DESCRIPTION OF PREFERRED  
EMBODIMENTS

In the description that follows, like parts are marked throughout the specification and drawings with the same reference numerals, respectively. The drawing figures might not be to scale, and certain components can be shown in generalized or schematic form and identified by commercial designations in the interest of clarity and conciseness.

FIG. 1 is a diagram of a system **100** for tracking an authenticated item in accordance with an exemplary embodiment of the present invention. System **100** allows authenticated items to be tracked from the moment they are stored in an inventory system, after an event occurs which may cause the item to



increase in value, through a chain of custody, to a first purchaser, and to subsequent purchasers.

System **100** includes item registration system **102**, which can be implemented in hardware, software, or a suitable combination of hardware and software, and which can be one or more software systems operating on a general purpose server platform. As used herein, a hardware system can include discrete semiconductor devices, an application-specific integrated circuit, a field programmable gate array or other suitable devices. A software system can include one or more objects, agents, threads, lines of code, subroutines, separate software applications, user-readable (source) code, machine-readable (object) code, two or more lines of code in two or more corresponding software applications, databases, or other suitable software architectures. In one exemplary embodiment, a software system can include one or more lines of code in a general purpose software application, such as an operating system, and one or more lines of code in a specific purpose software application.

Item registration system **102** is coupled to item **104** and tag **106** by a suitable media, such as a radio frequency communications media. As used herein, the term “couple” and its cognate terms, such as “couples” and “coupled,” can include a physical connection (such as a copper conductor), a virtual connection (such as through randomly assigned memory locations of a data memory device), a logical connection (such as through logical gates of a semiconducting device), other suitable connections, or a suitable combination of such connections. In one exemplary embodiment, systems and components are coupled to other systems and components through intervening systems and components, such as through an operating system. Communications media can be a local area network, a wide area network, a public network such as the Internet, the public switched telephone network, wireless media, fiber optic media, other suitable media, or a suitable combination of such media.

In one exemplary embodiment, item registration system **102** receives item **104** data that is input by a scanner, a bar-code reader, operator input, or other suitable processes. Likewise, item registration system **102** receives data from tag **106**, which can be an RFID tag, a barcode, a hologram tag, or other suitable authentication devices that may be attached to an item, provided with an item, or otherwise included with item **104**. Item registration system **102** stores the tag data and the item data, and allows the item data to be tracked through inventory, distribution, and subsequently to a purchaser.

Item registration system **102** includes item identification system **108**, chain of custody system **110**, item transfer system **112**, item verification system **114**, alert system **116**, and tracking personalization system **124**, each of which can be implemented in hardware, software, or a suitable combination of hardware and software, and which can be one or more software systems operating on a general purpose server platform. Item identification system **108** receives authentication device data, item description data, or other suitable data, and stores the item identification data for use by other systems of item registration system **102** or tracking interface system **118**. In one exemplary embodiment, item identification system **108** can scan items, read RFID tag data, receive operator entered data, receive personage data, receive item check-out and check-in data, can receive event notification data, and can receive other suitable item identification data.

Chain of custody system **110** allows the chain of custody of an item to be controlled so as to prevent the misappropriation of the item or counterfeiting of the item. In one exemplary embodiment, chain of custody system **110** can allow an entry point for an item to start an item chain of custody, can allow

reseller systems to receive the item and can verify the chain of custody to an ultimate owner, can allow the owner to register the purchase of the item, and can verify that the owner has purchased the authentic item that initiated at the beginning of the chain of custody.

Item transfer system **112** allows an item to be transferred from an owner to a subsequent purchaser. In one exemplary embodiment, item transfer system **112** allows an owner to transfer the item to another purchaser by providing access control measures, confirmation procedures or other suitable processes to ensure that an item is not stolen or counterfeited.

Item verification system **114** receives query data and provides identification data for an item. In one exemplary embodiment, item verification system **114** allows the owner of an item to be identified, allows the item to be identified based on external identification data, provides item identification data in response to other suitable combinations of data, or otherwise allows an item to be verified based on entered data.

Alert system **116** generates alert data when an item transfer to an unauthorized person is attempted, when an item is received that does not match what item identification system **108** or other suitable systems indicate that the item is, or when other information is received that indicates that a fraudulent transfer or counterfeit may have occurred. Alert system **116** can generate alert data to an operator of item registration system **102**, to an owner, to a prospective buyer of an item, to a personage, or other suitable persons.

Tracking personalization system **124** allows a user to create a personalized tracking portal. In one exemplary embodiment, a user can use tracking personalization system **124** to track household items, such as by applying a tag **106** to items in the household or using other suitable data already affixed to the item such as a bar code or product registration number, and then providing additional item data that is associated with the tag **106** data or other suitable data. Additional item data, such as purchase dates, purchase price, purchase location, image data of receipts, product identification data, product registration data, or other suitable data can also be provided through tracking personalization system **124**.

Tracking interface system **118** includes verification query system **120** and remote item transfer system **122**, each of which can be implemented in hardware, software, or a suitable combination of hardware and software, and which can be one or more software systems operating on a general purpose processor platform. Verification query system **120** receives verification query data from a user and interfaces with item registration system **102** or other suitable systems to provide verification data of an item, an owner, or other suitable data. In one exemplary embodiment, verification query system **120** can receive authentication device data from tag **106**, item data from item **104** such as by scanning or in other suitable manners, operator entered data, or other suitable verification query data, and can interface with item registration system **102** to verify whether the information entered matches information stored by item registration system **102**, can provide additional information depending upon the information that was requested through verification query system **120**, or can perform other suitable functions.

Remote item transfer system **122** allows the owner of an item to transfer it to another owner by interfacing with item registration system **102**. In one exemplary embodiment, remote item transfer system **122** allows the owner to send a subsequent purchaser suitable data to initiate a transfer, and also allows the prospective purchaser to enter data to complete the transfer. Likewise, remote item transfer system **122** can receive alert data from alert system **116** and can alert the



## 5

prospective buyer, prospective seller, or other suitable persons that an inconsistency with item identification data has been detected or that other inconsistent data has been entered.

In operation, system **100** allows items to be tracked, such as items that appreciate in value due to an association of the item with some external event or personage. In one exemplary embodiment, an item can be a piece of sporting gear, musical gear, collectibles, antiques, art, or other suitable items that are used by personages in the sports or entertainment industries, such that system **100** is used to verify that the item was used at a certain event, by a certain personage, or in other suitable manners. Likewise, system **100** can be used in conjunction with memorabilia, household assets, consumer products, or other suitable items, such as to register ownership of an item, confirm that the item has not been stolen, misappropriated or counterfeited, and to otherwise ensure the authenticity of the item.

FIG. 2 is a diagram of system **200** for providing item identification for item tracking and authentication in accordance with an exemplary embodiment of the present invention. System **200** includes item identification system **108** and item data entry system **202**, authentication device data entry system **204**, item scanner system **206**, personage verification system **208**, item check-out system **210**, item check-in system **212**, event verification system **214**, and item appraisal system **216**, each of which can be implemented in hardware, software, or a suitable combination of hardware and software, and which can be one or more software systems operating on a general purpose server platform.

Item data entry system **202** allows an operator to enter item data. In one exemplary embodiment, item data entry system **202** can interface with inventory systems, can receive bar code data or other suitable data that correlates to a database that includes item data, can receive image data, or can otherwise receive item data for use in identifying an item.

Authentication device data entry system **204** receives authentication device data for one or more items. In one exemplary embodiment, authentication device data entry system **204** can receive data from RFID tags implanted in items, such as by scanning each item individually, on a crate, in a warehouse, or in other suitable manners. Likewise, hologram data, bar code data, or other suitable data can be used.

Item scanner system **206** receives item data from scanning devices such as optical scanners, infrared scanners, barcode scanners, or other suitable scanners. In one exemplary embodiment, item scanner system **206** can interface with item data entry system **202** and can provide item identification data from a database based on barcode data or other suitable data.

Personage verification system **208** receives personage verification data. In one exemplary embodiment, a personage can verify entry of one or more items, such as by being present when items are entered in through item data entry system **202**, authentication device data entry system **204**, item scanner system **206**, or in other suitable manners. Personage verification system **208** can include a password, a user ID for the personage, and other suitable data, such that the personage can track the total number of items that are allocated to that personage, the location of such items, or other suitable information. For example, personage verification system **208** can be used to allow a personage to keep track of a total number of items, such that the personage can readily determine whether an unauthorized number of items is being tracked, to provide royalties to a personage based on the number of items registered through system **100**, based on each time an item is transferred through system **100**, or in other suitable manners.

Item check-out system **210** receives item check-out data from an authentication device, a scanner, or other suitable

## 6

item check-out data, such as before an item is used at a sporting event, concert, or other suitable event. In one exemplary embodiment, an item can be checked out from an inventory control system prior to an event, such that item check-out system **210** can be used to authenticate an item that was used at the event. Image data of the item can also be generated and stored.

Item check-in system **212** receives item check-in data from an authentication device, a scanner, or other suitable item check-in data, such as after the completion of a sporting event, a concert, or other suitable event. In one exemplary embodiment, an item can be checked in from an inventory control system during or after an event, such that item check-in system **212** can be used to authenticate an item that was used at the event. Image data of the item can also be generated and stored. Alert data can also be generated if an item that has been checked out prior to an event is not returned within a predetermined period of time after the completion of the event.

Event verification system **214** receives event verification data, such as event time data, event audiovisual data, data that can only be obtained at an event venue (such as from a venue identification device), or other suitable data that can be used to identify an event or that is related to an event where an item was used. Event verification system **214** can interface with item check-out system **210** and item check-in system **212**, such as to provide event data to item check-out system **210** and item check-in system **212** to allow the event verification data to be provided, or in other suitable manners. In one exemplary embodiment, event verification system **214** can also be used to provide event data to a purchaser of an item that was used in the event, such as audiovisual data of the item being checked out, used, and then checked in, audiovisual data of the item in use (such as a musical instrument), or other suitable data.

Item appraisal system **216** receives appraisal data and associates the appraisal data with an item. In one exemplary embodiment, item appraisal system **216** can include an appraiser interface, such as to allow a predetermined appraiser to enter or modify appraisal values for items. In another exemplary embodiment, item appraisal system **216** can include a user interface that allows a user to provide appraisal data such as the identity of an appraiser, an appraised value, an appraisal date, an image of an appraisal certification, or other suitable data. Item appraisal system **216** can also include an insurance company interface that allows an insurance company to provide approved appraiser data, to obtain appraisal data for items, or to obtain other suitable data.

In operation, system **200** provides item identification data that allows items to be identified and tracked. System **200** thus allows the tracking and authentication of an item to be improved, such as by providing additional measures for tracking and authentication to allow the item to be identified.

FIG. 3 is a diagram of a system **300** for providing chain of custody control in accordance with an exemplary embodiment of the present invention. System **300** includes chain of custody system **110** and entry point transfer system **302**, reseller transfer system **304**, and owner registration system **306**, each of which can be implemented in hardware, software, or a suitable combination of hardware and software, and which can be one or more software systems operating on a general purpose server platform.

Entry point transfer system **302** receives item identification data, authentication device data, and other suitable data at an entry point of a chain of custody. In one exemplary embodiment, the entry point can be the operator of system **100**, an



inventory control system, or other suitable systems. Entry point transfer system **302** can also receive data identifying a reseller that is going to receive the item from entry point transfer system **302**, such as to match with data entered at the reseller transfer system **304** by the reseller.

Reseller transfer system **304** receives item authentication data, item data, entry point transfer data, reseller data from other resellers in a chain of custody, or other suitable data and compares that data to data previously entered by entry point transfer system **302**, reseller transfer system **304** by other resellers, or other suitable data. In this manner, reseller transfer system **304** can be used to track an item through a chain of custody. For example, if an operator of reseller transfer system **304** enters incorrect item identification data, authentication device data, entry point data, or other related data, an alert can be generated through alert system **116**, or in other suitable manners to indicate that the chain of custody for an item has been broken. Likewise, reseller transfer system **304** can be used to identify breaks in a chain of custody where counterfeit items are being introduced, where fraud is being committed, or other conditions or problems.

Owner registration system **306** receives item data, owner registration data and other suitable data and provides verification data of the acquisition of an item by an owner. In one exemplary embodiment, owner registration system **306** can be used to determine when an item has been improperly transferred, to generate alert data, or to perform other suitable functions.

In operation, system **300** allows a chain of custody to be established for items, so as to allow the item to be authenticated starting at the source of the item and continuing through all owners of the item. System **300** thus provides additional tracking and authentication capabilities for items that have been signed by personages, used at events, rare items, or even common consumer goods or other similar items.

FIG. **4** is a diagram of a system **400** for allowing an item to be transferred from an owner to another purchaser in accordance with an exemplary embodiment of the present invention. System **400** includes item transfer system **112** and owner flagging system **402**, buyer identification system **404**, buyer verification system **406**, and purchase system **408**, each of which can be implemented in hardware, software, or a suitable combination of hardware and software, and which can be one or more software systems operating on a general purpose server platform.

Owner flagging system **402** receives owner flagging data for transfer of an item. In one exemplary embodiment, an owner may have an account that includes a list of items, and can flag one or more items for transfer. Likewise, all items associated with an event or personage may be maintained on a list and items that are available for sale can be flagged in a manner that allows an owner to indicate that the item is for sale, provide an asking price, allow a prospective buyer to make an offer, or other suitable functions can be performed by owner flagging system **402**.

Buyer identification system **404** receives buyer identification data from an owner or in other suitable manners. In one exemplary embodiment, buyer identification system **404** can receive an e-mail address, an account identifier, or other suitable data that identifies a buyer, such that the buyer can be contacted and requested to confirm the transfer. Likewise, buyer identification system **404** generate lockout data, such as to lockout an owner from initiating another transfer prior to verification of the transfer by the buyer or other suitable data.

Buyer verification system **406** receives buyer verification data from a buyer or in other suitable manners. In one exemplary embodiment, buyer verification system **406** can provide

an e-mail message, a message to an account holder, or other suitable data that identifies a seller and an item, such that the buyer can confirm the transfer of an item. Likewise, buyer identification system **404** can generate lockout data, such as to lockout the buyer from initiating another transfer prior to verification of receipt of payment by the seller or other suitable data.

Purchase system **408** allows authentication data, purchase data, and other suitable data for an item to be verified before completing the transfer of an item from an owner to a buyer. In one exemplary embodiment, a seller and a buyer can both be required to approve a transaction before the transfer of an item from the seller to the buyer is completed, such as to allow the seller to confirm that they have received payment for the item, to allow the buyer to confirm the authenticity of the item, and for other suitable purposes. In another exemplary embodiment, purchase system **408** can include payment functionality, such as an ACH or credit card payment processing system that allows buyers or sellers to reverse a transaction if the item data of record (such as an RFID tag number) does not match the item data for the transferred item.

In operation, system **400** allows an item to be transferred from an owner to another purchaser, such as by parties that do not have authentication device readers or in other suitable circumstances. System **400** allows the transfer of an item to be confirmed by a seller and by a purchaser, such as to provide the purchaser with sufficient time to have the item authenticated at a location with an authentication device reader, to allow the seller to confirm that payment has been received, or for other suitable purposes.

FIG. **5** is a diagram of a system **500** for providing item verification data in accordance with an exemplary embodiment of the present invention. System **500** includes item verification system **114** and owner verification system **502**, authentication device verification system **504**, and event verification system **506**, each of which can be implemented in hardware, software, or a suitable combination of hardware and software, and which can be one or more software systems operating on a general purpose server platform.

Owner verification system **502** allows owner verification data to be generated in response to owner query data. In one exemplary embodiment, purported owner identification data can be provided and a list of items owned by the owner can be returned. In another exemplary embodiment, item identification data such as a tag number, item identifier, purported event or personage data, or other suitable data can be provided, and owners of such items can be identified, such as with an indication of whether the items are for sale, the price at which the items are offered, or other suitable data.

Authentication device verification system **504** receives authentication device data or other suitable data and provides verification of the item on which the authentication device has been provided. In one exemplary embodiment, authentication device verification system **504** receives authentication device data, such as RFID tag data, hologram data, bar code data, or other suitable data, and returns item description data, owner data, or other suitable data.

Event verification query system **506** receives item data, event data, owner data, or other suitable data, and provides event verification. In one exemplary embodiment, an owner of an item may wish to only provide identification of the event at which the item was used. Likewise, a user may desire to determine whether items from a given event are available for purchase. Event verification system **506** thus allows event data to be used to identify items, and can also verify whether an item was used at a given event, whether an owner owns any



items that were used at a given event, whether any such items are available for purchase, or other suitable data.

In operation, system **500** allows items to be verified, such as through an associated owner, by receiving item identification device, authentication device data, event data, or in other suitable manners.

FIG. **6** is a diagram of an authentication device **600** in accordance with an exemplary embodiment of the present invention. Authentication device **600** can be affixed to items, such that removal of the authentication device **600** can be detected to prevent forgery, fraud, or other problems from occurring.

Authentication device **600** includes RFID tag **602** or other suitable identification devices. Nonmetallic port **604** allows RFID tag **602** to be read without being obscured by metal **606**. Metal **606** can also include a hologram or other similar information that is etched into metal **606**, such that the information etched in the metal **606** can be read through an item scanner system **206**, or in other suitable manners. Filler material **608** can be affixed to metal **606**. RFID tag **602** can be affixed to nonmetallic port **604**, such as with an adhesive, or can be separate from a nonmetallic port **604** such that it breaks away and remains attached to the surface of an item if an attempt is made to remove authentication device **600** from the item. Breakaway adhesive **610** can be affixed to filler material **608**, RFID tag **602**, or other suitable parts of authentication device **600**, such that when an attempt is made to remove authentication device **600** from an item, breakaway adhesive **610** separates, such as at exemplary separation points **612**, and leaves identifying data on the item as well as identifying information on the authentication device **600**. In this manner, when an authentication device **600** is placed on an item, an attempt to remove the authentication device **600** can be detected, such as by lack of adhesion areas on the removed authentication device **600** that uniquely identify the authentication device **600**, by the indications left on the original item, or in other suitable manners.

In operation, authentication device **600** increases the ability of system **100** or other suitable systems to provide item tracking and authentication by providing additional indications for determining the authenticity of an item. Authentication device **600** can be readily attached to items, and can be configured to leave an indication when removed by unauthorized personnel.

FIG. **7** is a flowchart of a method **700** for providing tracking and authentication data for an item in accordance with an exemplary embodiment of the present invention. Method **700** begins at **702** where item verification data is received. In one exemplary embodiment, the item verification data can be entered by a user, received from a scanner that receives item data and correlates it to data in a database, or in other suitable manners. The method then proceeds to **704**.

At **704**, authentication device data is received. Authentication device data can include authentication device data from a device that is affixed to an item, that is included with an item during manufacture, or other suitable authentication devices. The method then proceeds to **706**.

At **706**, the item is associated with the authentication device. In one exemplary embodiment, a database can be created that stores authentication device data and associates it with item data. The method then proceeds to **708**.

At **708**, owner registration data and item data is received. In one exemplary embodiment, the owner registration data and item data can be received from an owner after a purchase has been made at a retail outlet, or in other suitable manners. The method then proceeds to **710**.

At **710**, it is determined whether to correlate the owner registration data and item data to the authentication device. In one exemplary embodiment, the owner registration data and item data can include purchase point data, event data, or other suitable data, such as where an owner purchases an item and has been told that it was used at a particular event, purchases an item from a particular location, or in other suitable manners. If it is determined that the information provided at **708** by the owner does not match stored information, the method proceeds to **712** and alert data is generated. In one exemplary embodiment, the owner can be notified that the information entered does not match the stored information for the device, that there is no information stored for the device, or other suitable data can be provided, such as actual data for the device. Likewise, alert data can be generated to an operator of system **100**, a personage, a store at which the authentication device item was purchased, or other suitable data. The method then proceeds to **714** where the item is requested for verification. In one exemplary embodiment, the alert data can be generated when an indication exists that the purchaser may have performed the fraudulent activities, and the item can be requested, such as in conjunction with an offer to purchase the item, an offer for additional items, a rebate, a reward, or other suitable processes can be used to request that the item be provided for verification.

If it is determined at **710** that the authentication device should be correlated to the owner registration data, the method proceeds to **716** where a database for tracking ownership of an item is updated. The method then proceeds to **718** where it is determined whether the owner wants to obtain associated data, such as audio data, video data, audiovisual data, or other suitable data pertaining to the item. In one exemplary embodiment, audiovisual data of the event at which the item was used by a personage can be provided, audio data of an event at which the item was used in a performance can be provided, or other suitable data can be sold or otherwise provided. If it is determined that the owner does not want to obtain the associated data, the method proceeds to **722** and terminates. Otherwise, the method proceed to **720** where the data is provided to the owner.

In operation, method **700** allows items to be authenticated and tracked, so as to provide an indicia of the authenticity of an item, to allow an item to be transferred by purchases of the item, and for other suitable purposes.

FIG. **8** is a flowchart of a method **800** for providing validation data in accordance with an exemplary embodiment of the present invention. Method **800** begins at **802** where a validation request is received. In one exemplary embodiment, the validation request can be received at a store, point of purchase, over the Internet, or in other suitable manners. The method then proceeds to **804**.

At **804**, it is determined whether an event validation request has been received. In one exemplary embodiment, an item owner may only wish to show that an item was used at a particular sporting event and may not want to provide additional data on the item. For example, an item owner can enable others to determine that the item was used at an event, such as by providing data that is used to correlate with items used at the event. Likewise, other suitable processes can be used. If it is determined at **804** that event verification data is not required, then the method proceeds to **810**. Otherwise, the method proceeds to **806** where item identification data, a password, or other suitable data is received. The method then proceeds to **808** where the event data is provided. In one exemplary embodiment, the event data can be provided to predetermined recipients of event data, can be posted on a



## 11

website, can be shown on a terminal, or other suitable processes can be used. The method then proceeds to **810**.

At **810**, it is determined whether an item validation request has been received. In one exemplary embodiment, an item validation request can be used to identify the item, the owner, the purchase point, an event, or other suitable data. For example, an item validation can be requested when an item is being purchased or in other suitable manners. If it is determined at **810** that an item validation request has not been received, the method proceeds to **818**. Otherwise, the method proceeds to **812** where item identification data, password data, or other suitable data is received. The method then proceeds to **814** where event data is provided, such as data identifying an associated event data, audiovisual data, or other suitable data. The method then proceeds to **816** where other item data is provided, such as item owner data, item description data, item origination data, item purchase price or purchase point data, or other suitable data. The method then proceeds to **818**.

At **818**, it is determined whether an owner validation request has been received. In one exemplary embodiment, an owner validation request can be received to determine whether an owner owns any items, the number of items owned, or other suitable information. If it is determined at **818** that an owner validation request has not been received, the method proceeds to **824** and terminates. Otherwise, the method proceeds to **820** where item identification data, password data, owner identification data, or other suitable data is received. The method then proceeds to **822** where owner data is provided, such as on a display, to one or more predetermined email addresses or accounts, or in other suitable manners. The method then proceeds to **824** and terminates.

In operation, method **800** is used to provide validation data, such as validation data to a potential purchaser of an item, validation data to viewers of the item to verify that the item is what it is alleged to be, validation data to determine the number of items available for a given event, or other suitable validation data.

FIG. 9 is a flowchart of a method **900** for allowing an item to be transferred in accordance with an exemplary embodiment of the present invention. Method **900** begins at **902** where an owner transfer request is received. In one exemplary embodiment, the owner transfer request can include a request to enter an owner transfer area of a website, or other suitable data. The method then proceeds to **904**.

At **904**, a password is received. In one exemplary embodiment, the password can be a password known only to the owner, a password that must be provided by the recipient in order to complete the transfer, or other suitable passwords. The method then proceeds to **906**.

At **906**, a transferee e-mail address is received. Likewise, other transferee data can be received, such as a transferee account identifier where the transferee already has an account with item registration system **102** or other suitable systems. The method then proceeds to **908**.

At **908**, it is determined whether the password data, owner transfer request data, transferee e-mail address or account identifier data, or other suitable data has been confirmed. For example, if an owner-entered password does not match a stored password, the transaction can be terminated, an alert can be generated, or other suitable processes can be performed. Likewise, if a transferee e-mail address is not correct, the transferee account is not correct, or if other errors are detected, the method proceeds to **910** and terminates. Otherwise, the method proceeds to **912** where the owner is locked out. In one exemplary embodiment, the owner can see that the item has been made available for transfer but can be prevented

## 12

from transferring the item or performing other related functions with the item. The method then proceeds to **914**.

At **914**, a confirmation e-mail or message is transmitted to the transferee's e-mail address, posted at the transferee's account, or other suitable processes can be performed. In one exemplary embodiment, a hypertext link to a transfer confirmation website, a payment website, or other suitable websites can be provided to a transferee by e-mail. In another exemplary embodiment, the transferee can access the transfer confirmation data at the transferee's account, at a website, or in other suitable manners. The method then proceeds to **916**.

At **916**, it is determined whether a confirmation of the transfer has been received. In one exemplary embodiment, a predetermined time can be allowed for a transfer to be completed by a transferee. If it is determined at **916** that confirmation has not been received, the method proceeds to **918** where the owner is restored to the item, such that the owner can control the subsequent transfer of the item or other suitable processes. Likewise, if it is determined at **916** that the transfer has been confirmed, the method proceeds to **920**.

At **920**, new owner data is updated. In one exemplary embodiment, owner data from an owner account can be used to populate the owner data in a database, owner data can be received from the owner by data entry, or other suitable processes can be performed. The method then proceeds to **922** where authentication device data is received. In one exemplary embodiment, the owner can send the item to an authentication device reader, can use the owner's own authentication device reader such as an RFID tag scanner or barcode scanner to read the authentication device data, or other suitable processes can be used. The method then proceeds to **924**.

At **924**, it is determined whether confirmation of the authentication device data has been received. In one exemplary embodiment, authentication device data and additional item identification data can be received, it can be determined whether the item identification data matches the authentication device data, such as item description data, item tag number data, event data, personage data, or other suitable processes can be performed. If it is determined at **924** that confirmation has not been received, the method proceeds to **926** where correct item data is provided, such as where the item that has been transferred may have been misrepresented, where an incorrect item has been transferred, or other suitable data. Likewise, if there is no correct item data, such as when a fraudulent device has been provided, the former owner is notified, such as when the item data is associated with an item for which an owner already owns the item, when authentication device data is associated with an item that is still registered to an owner, or other suitable processes can be performed. Likewise, if it is determined at **924** that the authentication device has been confirmed, the method proceeds to **930** and terminates.

In operation, method **900** allows a transfer to occur for a registered item between two purchasers that are not chain of custody recipients, such as resellers, or retailers. Method **900** allows owners to transfer ownership of items using commercially available computer terminals or other data reading equipment.

FIG. 10 is a flowchart of a method **1000** for providing chain of custody control in accordance with an exemplary embodiment of the present invention. Method **1000** begins at **1002** where authentication device data is received. In one exemplary embodiment, the authentication device data can be received by scanning the device or in other suitable manners. The method then proceeds to **1004**.

At **1004**, item data is received, such as by entering item data for a batch of items, for each individual item, by reading a



## 13

barcode and associating the barcode data with data stored in a database, or in other manners. The method then proceeds to **1006**.

At **1006**, it is determined whether the item has been checked out. In one exemplary embodiment, items such as jerseys, footballs, helmets, guitars, drumsticks, or other suitable items can be checked out for events, such as sporting events, rock concerts, or other suitable events. If it is determined at **1006** that an item has been checked out, the method proceeds to **1008** where check-out data is stored. In one exemplary embodiment, check-out can include reading the authentication device or otherwise associating the check-out data with a specific item, storing image data of the item, or performing other suitable processes. The method then proceeds to **1010**.

At **1010**, event data is stored. In one exemplary embodiment, the event data can include data associated with a specific location, such as data read at a device that is stored or installed at a location, audio visual data of the event, video data of the event, graphic data of the event, audio data of the event, or other suitable event data. The method then proceeds to **1012**.

At **1012**, check-in data is stored, such as by storing authentication device data, image data, or other suitable data. In one exemplary embodiment, if an item is not checked in within a predetermined period of time after an event, then alert data can be generated. Likewise, after an item has been checked in, the item can be referenced to the stored event data, so as to provide a purchaser of the item with additional audio visual data or other tracking and authenticating data, to allow the purchaser to purchase the audio visual data or other types of data for an extra cost, or for other suitable purposes. The method then proceeds to **1014**.

At **1014**, it is determined whether personage verification is to be received. If personage verification is not to be received, the method proceeds to **1018**. Otherwise, the method proceeds to **1016** where personage verification data is received. In one exemplary embodiment, a personage can have a password and user ID so that the personage can access a database and track the number of items that are associated with the personage, the types of items, the status of the items, can receive a royalty each time the items are transferred, or for other suitable purposes. The method then proceeds to **1018**.

At **1018**, it is determined whether a chain of custody transfer has occurred. If a chain of custody transfer has not occurred, the method proceeds to **1024**. Otherwise, the method proceeds to **1020** where transfer data is received. In one exemplary embodiment, the transfer data can include identification data of the transferor, identification data for the recipient, a date of transfer, location of transfer, or other suitable data. Likewise, purchase price data, sale price data, or other suitable data can be provided. The method then proceeds to **1022** where recipient data is received. In one exemplary embodiment, the recipient data can include data identifying the transferor, data identifying the recipient, data identifying the item, the event, the personage, or other suitable data. The method then proceeds to **1024**.

At **1024**, it is determined whether the information entered at **1016**, **1020**, **1022**, or other suitable data matches. In one exemplary embodiment, a check can be made at a point of transfer, a chain of custody test can be performed periodically as part of an audit, or other suitable processes can be performed. If it is determined that a match does not exist between two sets of data, the method proceeds to **1026** where alert data is generated. In one exemplary embodiment, a personage can be notified that a number of items being tracked exceeds the number of authorized items, a transferor can be notified that

## 14

an intended recipient has not received a transferred item, or other suitable alert data can be generated. The method then proceeds to **1028**.

At **1028**, it is determined whether a purchase has been performed. In one exemplary embodiment, a purchase can include a purchase by a buyer, end user, or other suitable purchasers other than intended resellers. If a purchase has not been performed, the method returns to **1018**, such as where the item remains in a chain of transfer to ultimate purchasers, such as transfer between a wholesaler and a retailer, between retailers who are presently selling the item (so that a status of the item can identify that the item is available for purchase from the retailer), or other suitable data. Otherwise, the method proceeds to **1030** where the chain of transfer data, item data, event data, and other suitable data is received. For example, a purchaser can purchase an item and can enter the item data that the item is purported to embody, such as an event at which the item is purported to have been used, the personage the item is purported to have been used by, or other suitable chain of transfer data, such as at the outlet at which the item is being purchased. The method then proceeds to **1032**.

At **1032**, it is determined whether a confirmation is received. In one exemplary embodiment, the data entered at **1030** can be checked against previously entered data to confirm that all of the data is correct. If it is determined at **1032** that all the information is correct, the method proceeds to **1026** where ownership data is updated. Otherwise, the method proceeds to **1034** where alert data is generated. In one exemplary embodiment, the alert data can be generated to an operator of system **100** or in other suitable locations and not provided to the seller and purchaser of the item, such as where a sting-type operation is being conducted to locate sellers of fraudulent items. Likewise, other suitable alert data can be generated.

In operation, method **1000** allows a chain of custody for an item to be tracked and controlled to allow the items to be authenticated and to be transferred between an entry point, various resellers, purchasers, or other suitable persons. Likewise, method **1000** allows a personage to control the number of items that are being transferred by the system, to determine if the number of items being transferred exceeds preset limits or other suitable information.

Although exemplary embodiments of a system and method of the present invention have been described in detail herein, those skilled in the art will also recognize that various substitutions and modifications can be made to the systems and methods without departing from the scope and spirit of the appended claims.

What is claimed is:

1. A system configured to maintain authentication information associated with an item, the system comprising:
  - a system including a radio frequency device reader and a bar code reader;
  - a master control unit that is operably coupled to the radio frequency device reader and the bar code reader, said master control unit configured to receive product identification data from the radio frequency device reader and the bar code reader;
  - a database system communicatively coupled to the master control unit, the database system configured to store authentication information associated with a plurality of items, the authentication information including information relating to a chain of custody of the items and, for each item, at least two of i) a location and date of origin, ii) a person associated with the item at the origin of the item, and iii) a previous owner;



## 15

a display unit operably coupled to the master control unit and disposed proximate to the support structure, said display unit configured to receive and display said authentication information to a user; and  
 an alert system operably connected to the master control unit that is configured to notify the user if the chain of custody information is incomplete, and to display a notification if the chain of custody is incomplete wherein, in response to the movement of the item proximate the radio frequency reader or the bar code reader, the master controller submits a query to the database system, receives the authentication information, and causes the display unit to display at least a portion of the authentication information to the user.

2. The system of claim 1, wherein the query includes at least a portion of product identification data associated with the item.

3. The system of claim 1, wherein the display unit includes a user interface adapted to control the master control unit.

4. The system of claim 1, wherein the barcode reader and the RFID reader is coupled to an authentication device data entry system to provide increased data processing efficiency.

5. The system of claim 1, further comprising:

a plurality of data processing systems at a corresponding plurality of item handling facilities, the data processing systems retrieving and storing the authentication information; and

a central system communicating with the plurality of data processing systems and the database system, the central system updating the chain of custody information stored in the database system according to input from the data processing systems.

6. The system of claim 1 wherein the alert data is transmitted to a current owner of the item.

7. The system of claim 1 wherein the alert data is transmitted to an operator of the database system.

8. The system of claim 1 further comprising a buyer verification system configured to generate a query to a current owner of the item and to authorize a transfer of the item in response to the query.

9. The system of claim 1 further comprising a buyer verification system configured to generate a query to a current owner that includes an identification of a prospective buyer of the item and to authorize a transfer of the item in response to the query.

10. A computer-implemented method of tracking items, the method comprising:

receiving an item at an item handling facility;

identifying the item using a scanning system having a radio frequency reader, a barcode reader, a computing device configured to electronically communicate with a database system, and a display, wherein identifying the item includes moving the item proximate the radio frequency reader or the bar code reader;

querying the database system to retrieve authentication information associated with the item, wherein said authentication includes information relating to a chain of custody of the item and at least two of i) a location and date of origination of the item, ii) a person associated with the location and date of origination of the item, and iii) a previous owner of the item;

displaying at least a portion of the authentication information on the display, wherein displaying at least a portion of the authentication information includes displaying a notification if the chain of custody is incomplete; and  
 updating the authentication information to reflect that the item has been received.

## 16

11. The method of claim 10, wherein querying the database system includes submitting, from the scanning system, at least a portion of identification information associated with the item.

12. The method of claim 10, wherein displaying at least a portion of the authentication information includes displaying a notification if the authentication information is unavailable.

13. The method of claim 10, further comprising generating alert data if the chain of custody is incomplete.

14. The method of claim 10, further comprising entering into the scanning system handling information associated with the item.

15. The method of claim 14, wherein the database system is updated to include the handling information at each transfer of ownership of the item.

16. The method of claim 14, wherein the handling information is entered by scanning the item.

17. The method of claim 10, further comprising transmitting alert data to an owner of the item if the chain of custody is incomplete.

18. The method of claim 10, further comprising transmitting alert data to an operator of the database system if the chain of custody is incomplete.

19. In a system configured to maintain authentication information associated with an item that includes a radio frequency device reader and a bar code reader, a master control unit that is operably coupled to the radio frequency device reader and the bar code reader, said master control unit configured to receive product identification data from the radio frequency device reader and the bar code reader, a database system communicatively coupled to the master control unit, the database system configured to store authentication information associated with a plurality of items, the authentication information including information relating to a chain of custody of the items and, for each item, at least two of i) a location and date of origin, ii) a person associated with the item at the origin of the item, and iii) a previous owner, a display unit operably coupled to the master control unit and disposed proximate to the support structure, said display unit configured to receive and display said authentication information to a user, an alert system operably connected to the master control unit that is configured to notify the user if the chain of custody information is incomplete, and to display a notification if the chain of custody is incomplete wherein, in response to the movement of the item proximate the radio frequency reader or the bar code reader, the master controller submits a query to the database system, receives the authentication information, and causes the display unit to display at least a portion of the authentication information to the user, wherein the query includes at least a portion of product identification data associated with the item, wherein the display unit includes a user interface adapted to control the master control unit, wherein the barcode reader and the RFID reader is coupled to an authentication device data entry system to provide increased data processing efficiency, a plurality of data processing systems at a corresponding plurality of item handling facilities, the data processing systems retrieving and storing the authentication information; a central system communicating with the plurality of data processing systems and the database system, the central system updating the chain of custody information stored in the database system according to input from the data processing systems, wherein the alert data is transmitted to a current owner of the item, wherein the alert data is transmitted to an operator of the database system and a buyer verification system configured to generate a query to a current owner that includes an identification of a prospec-



17

tive buyer of the item and to authorize a transfer of the item in response to the query, a method comprising:

receiving an item at an item handling facility;

identifying the item using a scanning system having a radio frequency reader, a barcode reader, a computing device 5 configured to electronically communicate with a database system, and a display, wherein identifying the item includes moving the item proximate the radio frequency reader or the bar code reader;

querying the database system to retrieve authentication 10 information associated with the item, wherein said authentication includes information relating to a chain of custody of the item and at least two of i) a location and date of origination of the item, ii) a person associated with the location and date of origination of the item, and 15 iii) a previous owner of the item;

displaying at least a portion of the authentication information on the display, wherein displaying at least a portion of the authentication information includes displaying a notification if the chain of custody is incomplete;

18

updating the authentication information to reflect that the item has been received;

wherein querying the database system includes submitting, from the scanning system, at least a portion of identification information associated with the item;

wherein displaying at least a portion of the authentication information includes displaying a notification if the authentication information is unavailable;

generating alert data if the chain of custody is incomplete;

entering into the scanning system handling information 10 associated with the item;

wherein the database system is updated to include the handling information at each transfer of ownership of the item;

wherein the handling information is entered by scanning 15 the item;

transmitting alert data to an owner of the item if the chain of custody is incomplete; and

transmitting alert data to an operator of the database system if the chain of custody is incomplete.

\* \* \* \* \*