



US007790212B2

(12) **United States Patent**
Chong

(10) **Patent No.:** **US 7,790,212 B2**
(45) **Date of Patent:** **Sep. 7, 2010**

(54) **METHOD OF PROCESSING PORKHIDE DOG CHEWS**

(75) Inventor: **Zhu Zhao Chong**, Nanyan Town,
Pingyang County (CN)

(73) Assignee: **Hacht Sales & Marketing**, Farmington
Hills, MI (US)

(*) Notice: Subject to any disclaimer, the term of this
patent is extended or adjusted under 35
U.S.C. 154(b) by 955 days.

(21) Appl. No.: **10/106,402**

(22) Filed: **Mar. 26, 2002**

(65) **Prior Publication Data**

US 2002/0142079 A1 Oct. 3, 2002

US 2007/0128321 A2 Jun. 7, 2007

(30) **Foreign Application Priority Data**

Apr. 2, 2001 (CN) 01 1 05819

(51) **Int. Cl.**
A23B 4/044 (2006.01)

(52) **U.S. Cl.** **426/314**; 426/315; 426/641;
426/513; 426/805; 119/710; 119/711

(58) **Field of Classification Search** 426/3,
426/104, 132, 272, 314-315, 641, 645, 513,
426/805; 44/605, 606, 628; 119/702, 707,
119/709-711

See application file for complete search history.

(56) **References Cited**

U.S. PATENT DOCUMENTS

1,149,170 A 8/1915 Allis
1,337,974 A 4/1920 Casey
1,534,867 A 4/1925 Peschke et al.
2,013,479 A 9/1935 Robinson
2,185,547 A 1/1940 Fowler
2,290,854 A 7/1942 Hoy
2,345,463 A 3/1944 Cox

2,721,142 A 10/1955 Shinn et al.

2,988,045 A 6/1961 Fisher

3,106,884 A 10/1963 Dalve et al.

3,107,651 A 10/1963 Beck

3,123,047 A 3/1964 Fisher

3,198,173 A 8/1965 Fisher

3,295,585 A 1/1967 Kovach, Jr. et al.

3,368,528 A 2/1968 Ganoe

(Continued)

FOREIGN PATENT DOCUMENTS

CA 674261 11/1963

(Continued)

OTHER PUBLICATIONS

A.D. Livingston, Cold-Smoking & Salt-Curing Meat, Fish, & Game,
Lyons & Burford, p. 43-47 & 83-112, 1995.*

(Continued)

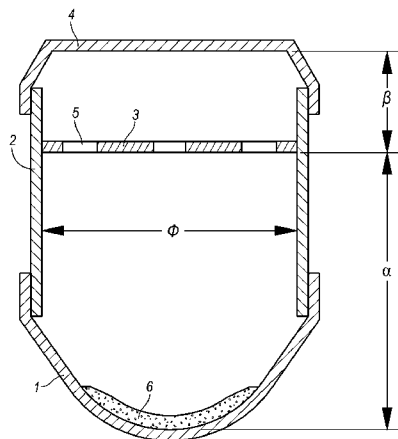
Primary Examiner—Drew E Becker

(74) *Attorney, Agent, or Firm*—Brooks Kushman P.C.

(57) **ABSTRACT**

The present invention provides a method of processing porkhide dog chews. The method includes the step of first subjecting pigskin rawhide to defatting and depilation treatment. Then the rawhide is split to obtain a first, a second, a third and a fourth layer of rawhide material. The rawhide material undergoes defatting, rinsing, and sun-drying to produce a finished hide product. The hide product is smoked to achieve objectives of dying and flavoring to result in a finished porkhide dog chew product.

14 Claims, 1 Drawing Sheet



US 7,790,212 B2

Page 2

U.S. PATENT DOCUMENTS

3,441,001 A	4/1969	Fisher	5,972,401 A	10/1999	Kowalski	
3,665,988 A	5/1972	Aceto et al.	6,000,319 A	12/1999	Treiber	
3,709,698 A	1/1973	Davis	6,014,950 A	1/2000	Rogers	
3,769,037 A	10/1973	Sholl	6,033,715 A *	3/2000	Lynch	426/641
3,805,686 A	4/1974	West	6,042,873 A	3/2000	Lawson	
4,095,957 A	6/1978	Orsing	6,060,100 A	5/2000	Koller	
4,145,447 A	3/1979	Fisher	6,142,066 A	11/2000	Anders et al.	
4,163,804 A *	8/1979	Meyer et al.	6,165,474 A	12/2000	Frudakis et al.	
4,260,635 A	4/1981	Fisher	6,223,693 B1	5/2001	Perlberg et al.	
4,344,973 A	8/1982	Blake	6,277,420 B1	8/2001	Andersen	
4,364,925 A	12/1982	Fisher	6,425,348 B1	7/2002	Twain	
4,511,583 A	4/1985	Olson et al.	6,444,243 B1	9/2002	Duensing et al.	
4,535,725 A	8/1985	Fisher	6,455,083 B1	9/2002	Wang	
4,690,045 A	9/1987	Badger	6,584,938 B2	7/2003	Sherrill et al.	
4,702,929 A	10/1987	Lehn	6,601,539 B1	8/2003	Snook	
4,724,756 A	2/1988	Sarparanta	6,705,213 B1	3/2004	Thomas	
4,779,525 A	10/1988	Gaines	6,827,041 B2 *	12/2004	Hague et al.	119/709
4,810,510 A	3/1989	Lever	6,886,497 B1 *	5/2005	Hague	119/710
4,869,163 A	9/1989	Haskins	2003/0138526 A1	7/2003	Hague	
4,880,642 A	11/1989	Berends	2003/0138528 A1 *	7/2003	Hague	426/104
4,892,748 A	1/1990	Andersen				
4,921,720 A	5/1990	Davis				
4,957,755 A	9/1990	Causey				
5,011,679 A	4/1991	Spanier et al.				
5,022,345 A	6/1991	Bolivar et al.				
5,026,572 A	6/1991	Neiberger				
5,046,514 A	9/1991	Bolt				
5,047,231 A	9/1991	Spanier				
D326,002 S	5/1992	Rodriguez				
D326,004 S	5/1992	Rodriguez				
5,149,550 A	9/1992	Mohilef				
5,290,584 A	3/1994	Ray				
5,397,582 A	3/1995	Underwood et al.				
D357,770 S	4/1995	Rodriguez				
5,476,069 A	12/1995	Axelrod				
5,512,312 A	4/1996	Forney et al.				
5,603,976 A	2/1997	Share et al.				
5,635,237 A	6/1997	Greenberg et al.				
5,673,653 A	10/1997	Sherrill				
5,786,382 A	7/1998	Childers-Zadah				
5,897,893 A	4/1999	Mohilef				

FOREIGN PATENT DOCUMENTS

CN	1063795 A	8/1992
CN	ZL 01311403.4	11/2001
CN	ZL 01311404.2	11/2001
CN	ZL 01311405.0	11/2001
CN	ZL 01238624.3	2/2002
CN	1369197 A *	9/2004
JP	03-292873	* 12/1991
JP	5192095	8/1993
JP	10-295331	* 8/1997
WO	WO 89/11799	12/1989

OTHER PUBLICATIONS

Wenzhou Huaheng plastic & Leather Co., Cattlehide Dog Chews, Feb. 2001, translated.*
Hickory Smoked Rawhide, Gimborn U.S., 1992.*
Q/NHH Jan. 2001, "Dog Chewing Bones," Feb. 16, 2001, 7 pgs.
Pork Treats, *Doctors Foster & Smith*, 1999, cover and p. 135, vol. 99-32

* cited by examiner

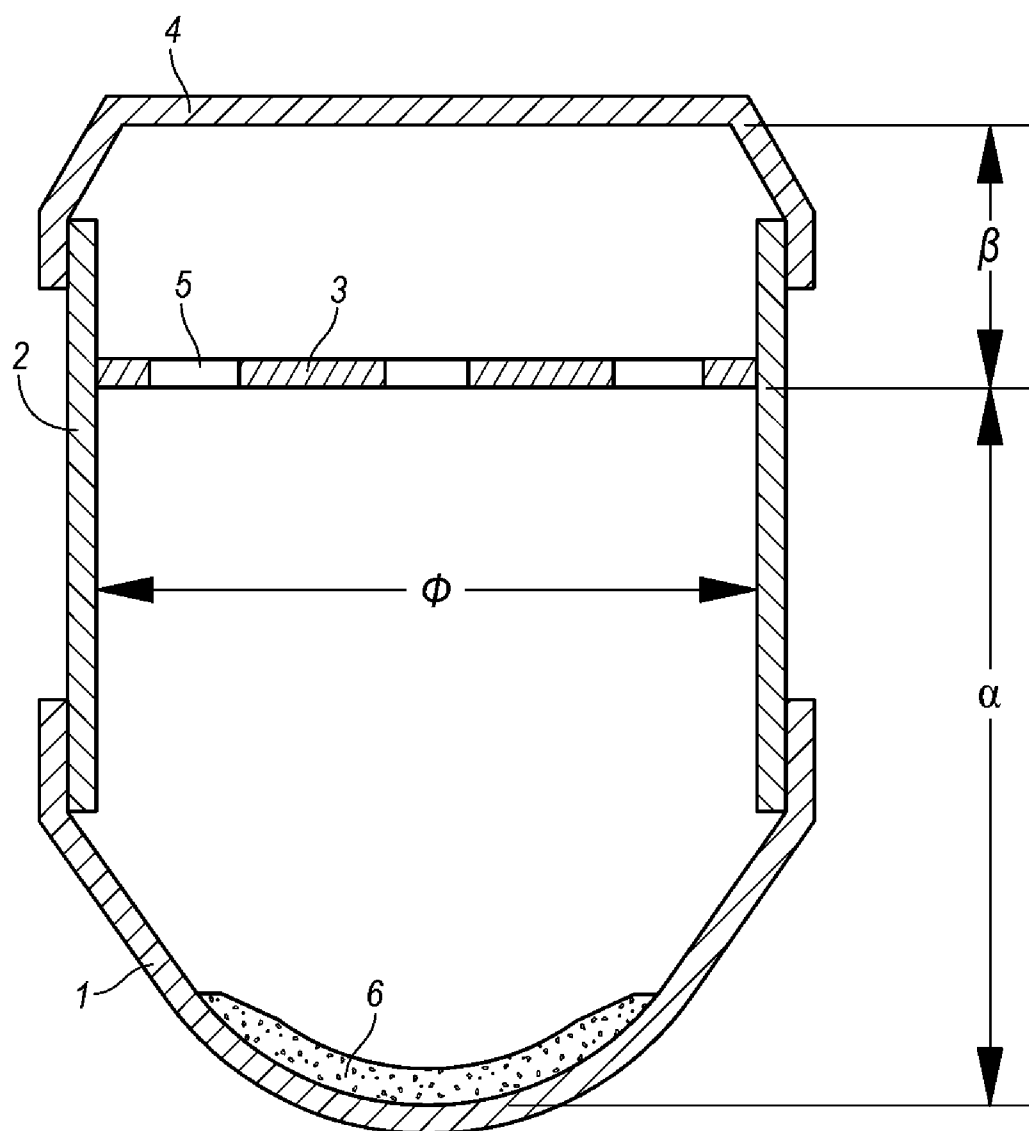


FIG. 1

METHOD OF PROCESSING PORKHIDE DOG CHEWS

CROSS-REFERENCE TO RELATED APPLICATIONS

This application claims foreign priority to State Intellectual Property Office of the People's Republic of China Application No. ZL 01105819.6, filed Mar. 31, 2001 and published Apr. 2, 2001, which subsequently issued on May 19, 2004, Patent Certificate No. 155117.

BACKGROUND OF THE INVENTION

1. Field of the Invention

The present invention relates to methods of processing pet food products made from animal hide.

2. Background Art

Pet chewing bones made from animal hide are a type of pet food product, called dog chews in the industry. There is enormous market demand for these products in advanced countries such as Japan, the United States, the United Kingdom, and Australia. Annual sales volumes may reach billions of US dollars. These products are primarily produced in Brazil, Thailand, and China and are exported to countries where there is demand. The dog chew manufacturers in China are primarily located around Shuitou Town, Pingyang County, Wenzhou. The reason for this is that Shuitou Town has the largest pig and cattle tannery centers in China and thus provides a sure supply of raw materials for dog chew production.

In the process of making dog chews, raw hide undergoes defatting and depilation treatment. It is then split into first, second, third, and fourth layers of rawhide material, which then undergo further defatting, rinsing, and sun-drying to become finished hide products. The finished hide product is then cut, soaked, plaited and shaped, dried, dyed, and flavored, and the result is animal hide dog chews. If the finished-product hide is shredded, mixed with adhesive, mould-pressed and formed, dried, dyed, and flavored, the result is an adhesive product dog chew. That is, dog chews can be classed either as animal hide dog chews or as adhesive product dog chews, depending on the processing steps. In addition, dog chews can also be classed according to the raw material as either cowhide dog chews or porkhide dog chews.

The fact that cowhide has small pores and less grease means that cowhide dog chews boast smooth and lustrous surfaces that can easily be dyed different colors and soaked to take on many delicious flavors. The aforementioned process of dyeing and flavoring consists of directly using food dyes and flavor essences on the surface of the finished product. This method is very well suited to cowhide dog chews. Because pork hides have large pores and high fat content, porkhide dog chews appear rough, plain, dull, and white. They smell of rawhide and uncooked oil. Moreover, there is no way to dye or flavor them, for their oily surface can hardly absorb any dyes or flavor essences. Therefore, although the raw material for porkhide dog chews enjoys a huge advantage in terms of availability and ease of purchase (relative to cowhide), it is difficult to change the unappealing color and odor of porkhide dog chews using the current, general dyeing and flavoring methods. As a result, cowhide dog chews have won most of the dog chew market, and porkhide dog chews have just a minor share of the market.

A goal of the present invention is to provide a porkhide dog chew processing method that can thoroughly change the original color and odor of porkhide dog chews.

SUMMARY OF THE INVENTION

In order to achieve the above-described objective, the technical solution of the present invention is thus: To use a smoking process on semi-finished porkhide chew products, i.e. shaped hide products or shaped adhesive products, to achieve the objectives of flavoring and dyeing.

The above-described technical solution can be: a method of processing porkhide dog chews, the primary processing procedures of which comprise subjecting rawhide to defatting and depilation treatment, then splitting the hide to obtain first, second, third, and fourth-layer rawhide materials, then defatting, rinsing, and sun-drying same to make a finished hide product, then cutting, soaking, pleating, shaping, and drying the finished hide product to form a shaped animal hide product, and then smoking the shaped animal hide product to achieve the objectives of dyeing and flavoring and thus to obtain finished porkhide dog chew products.

The above-described technical solution can also be: a method of processing porkhide dog chews, the primary processing procedures of which comprise subjecting rawhide to defatting and depilation treatment, then splitting the hide to obtain first, second, third, and fourth-layer rawhide materials, then defatting, rinsing, and sun-drying it to make a finished hide product, then shredding, mixing with adhesive, mould-pressing and forming, and drying the finished hide product to form a shaped adhesive product, and then smoking the shaped adhesive product to achieve the objectives of dyeing and flavoring and thus to obtain finished porkhide dog chew products.

BRIEF DESCRIPTION OF THE DRAWING

The present invention is described in greater detail below in the light of the embodiments and attached drawings:

FIG. 1 is a structural drawing of the smoking equipment provided by the present invention.

DETAILED DESCRIPTION OF THE PREFERRED EMBODIMENT

Hide material for shaped porkhide products has large pores, which are easily penetrated by smoke. It absorbs heat and absorbs smoke more readily than other hides such as cowhide. When combined with smoke the resulting odors are very pleasant. At the same time, the surface of shaped porkhide products is greasy. In situations where the general direct dyeing and flavoring methods prove ineffective, the surface grease is heated and melted, enabling the smoke to act on the shaped product while it is greasy so as to give it a bright luster while dyeing it.

Cowhide dog chews are suited to direct dyeing and flavoring because their hide materials have small pores and small amounts of grease, and for many years, the industry had a fixed way of thinking, or conceptual inertia: whenever one thought of changing the smell or color of a dog chew, one would think of directly dyeing and flavoring, i.e. of relying on the direct action of food dyes and flavor essences on finished product surfaces. Consequently, although porkhide dog chews enjoy a huge advantage in terms of raw materials and costs (especially in Shuitou Town, Wenzhou, Zhejiang, China), the fact that direct dyeing and flavoring are unable to improve its unappealing color and smell has meant that, for many years, porkhide dog chews have had a tiny market share.

The smoking process put forth by the present invention is simple and ingenious and effectively solves a difficulty involved in porkhide dog chew processing. It is as if a thin

3

layer of paper were laid between the natural characteristics of porkhide and the unique effects of the smoking process. After the inventor poked an opening with one finger, success was quickly attained on both sides. Therefore, the present invention will play a critical role in the successful acceptance of porkhide dog chews in the marketplace. In addition to having dyeing and flavoring effects, the smoking process provided by the present invention thoroughly solves a problem that formerly plagued this product, i.e. the fact that, being very greasy, it could not easily be processed and was vulnerable to mildewing and thus had difficulty meeting standards during border-crossing inspections.

In order to change the original unappealing color and smell of the porkhide dog chew, the shaped animal hide product or shaped adhesive product is placed on a box rack 3 in the smoking equipment. The smoking equipment, as shown in FIG. 1, comprises a smoke generator 1, a smoke box 2, the box rack 3, and a box cover 4. Smoke fuel 6 is placed in the smoke generator 1. The smoke generator 1 is heated such that the smoke fuel 6 produces smoke due to heating and oxygen-deficient carbonization. The hot smoke rises and passes through airflow holes 5 to the box cover 4 and subsequently falls slowly to the box rack 3, where it comes into contact and combines with the shaped product on the box rack 3, thereby achieving the objective of changing the color and smell of the porkhide dog chew. During the process of hot smoke rising and then falling, the temperature of the hot smoke gradually drops. As a result of the gap between the smoke generator 1 and the box rack 3 and between the rack 3 and the box cover 4, the temperature of the smoke rises and falls such that, while it is combining with the shaped product it will not be too high as to burn the product.

While the shaped porkhide dog chew product is being smoked, it must not be subjected to temperatures that are either too high or too low. Otherwise, it may very well burn, or the smoking may be ineffective due to insufficient heat. Therefore, the inventor deduced through several trials that the ideal dimensions for the smoke box include an internal diameter between 50 cm and 120 cm, and a height from the smoke generator to the box rack greater than 20 cm. These dimensions cause the smoke to rise at least 20 cm before reaching the smoked object for the first time, thereby preventing excessively high smoke temperatures and preventing burning of the smoked object. The result of a height from the box rack to the box cover of less than 25 cm provides that, after the smoke touches the top, the length of its descent is not much further. Thus, after the smoke falls back, the temperature will not be too low when the smoke touches the smoked object. This ensures the proper smoking effect. During the smoking process, the smoked object undergoes a full contact reaction with the smoke only after the smoke has risen and fallen back to the height where the smoked object lies. In FIG. 1, the internal diameter of the smoke box ϕ , the height from the smoke generator to the box rack α , and the height from the box rack to the box cover β are 78 cm, 30 cm, and 15 cm respectively. Therefore, the resulting smoking equipment can more effectively perform its smoking function.

The smoke fuel used in the smoking process primarily consists of a type of starch smoke fuel such as shredded sweet potato or bran coat or husked rice and a sugar smoke fuel such as dark brown sugar or raw sugar or light brown sugar or locally-produced rock sugar. Moreover, when the weight of the starch smoke fuel is from fifty-five to sixty-five percent of the total weight of the smoke fuel, and when the weight of the sugar smoke fuel is from forty-five percent to thirty-five percent of the total smoke fuel weight, the results of the smoking processing are quite good. The starch, sugar, and other main

4

ingredients in the smoking process carbonize due to excessive heat and lack of oxygen, producing a fragrant, sweet smoke of cooked sugar and starch. The rather high temperatures in the box also cause the surface layer of the shaped products to undergo partial cooking. The molecules of the surface layer move violently and combine very well with the smoke containing sugar and starch ingredients, thereby changing the color, smell, and taste of the shaped product and causing it to have a golden color and an appealing smell that is fragrant with a hint of sweetness. The inventor has found as a result of a long period of experimentation that quite satisfactory results are obtained from using a smoke fuel composed of shredded sweet potato and dark brown sugar, wherein the shredded sweet potato is sixty percent of total weight and dark brown sugar is forty percent of total weight.

While embodiments of the invention have been illustrated and described, it is not intended that these embodiments illustrate and describe all possible forms of the invention. Rather, the words used in the specification are words of description rather than limitation, and it is understood that various changes may be made without departing from the spirit and scope of the invention.

What is claimed is:

1. A method of processing porkhide dog chews, comprising the following steps:

subjecting pigskin rawhide to defatting and depilation treatment;
splitting the rawhide into a plurality of layers of split rawhide material;
subjecting the split rawhide material to shaping and drying to produce a dried shaped hide product; and
smoking the dried shaped hide product with gaseous smoke to dye and flavor the dried shaped hide product, resulting in a finished porkhide dog chew.

2. The method of processing porkhide dog chews described in claim 1, wherein the smoking step heats a smoke fuel composed of a starch smoke fuel and a sugar smoke fuel, such that the weight of the starch smoke fuel is from fifty-five to sixty-five percent of the total smoke fuel weight, and the weight of the sugar smoke fuel is from forty-five percent to thirty-five percent of the total smoke fuel weight.

3. The method of processing porkhide dog chews described in claim 2, wherein the starch smoke fuel is further defined as shredded sweet potato and the sugar smoke fuel is further defined as dark brown sugar, wherein the sweet potato is sixty percent of the total weight, and the dark brown sugar is forty percent of the total weight.

4. The method of processing porkhide dog chews described in claim 1, wherein the smoking process utilizes smoking equipment comprising:

a smoke generator (1) heated to cause smoking fuels, disposed in the smoke generator (1), to produce hot smoke due to heating and oxygen-deficient carbonization;
a smoke box (2), for containing the smoke;
a box rack (3) for supporting the dried shaped hide product in the smoke box (2), above the smoke generator (1); and
a box cover (4) for containing and redirecting the rising smoke such that the smoke falls back slowly to the box rack (3) and comes into contact with the dried shaped hide product on the box rack (3) to result in a finished porkhide dog chew product.

5. The method of processing porkhide dog chews described in claim 4, wherein the smoke box (2) internal diameter is greater than 50 cm and less than 120 cm, the height from the smoke generator (1) to the box rack (3) is no less than 20 cm and the height from the box rack (3) to the box cover (4) is no greater than 25 cm.

5

6. The method of claim 1, further comprising:
heating a smoke fuel to generate gaseous smoke; and
placing the dried shaped hide product in contact with the
gaseous smoke to dye and flavor the dried shaped hide
product.

7. The method of claim 6, further comprising heating the
dried shaped hide product to enhance absorption of the gas-
eous smoke.

8. A method of processing porkhide dog chews, compris-
ing the following steps:

subjecting pigskin rawhide to defatting and depilation
treatment;

splitting the rawhide into a plurality of layers of split raw-
hide material;

shredding the split rawhide material;

mixing the shredded rawhide material with adhesive;

subjecting the mixture to pressure-molding, shaping and
drying to form a dried shaped hide product; and

smoking the dried shaped hide product with gaseous
smoke to dye and flavor the dried shaped hide product,
resulting in a finished porkhide dog chew.

9. The method of processing porkhide dog chews described
in claim 8, wherein the smoking step heats a smoke fuel
composed of a starch smoke fuel and a sugar smoke fuel, such
that the weight of the starch smoke fuel is from fifty-five to
sixty-five percent of the total smoke fuel weight, and the
weight of the sugar smoke fuel is from forty-five percent to
thirty-five percent of the total smoke fuel weight.

10. The method of processing porkhide dog chews
described in claim 9, wherein the starch smoke fuel is further
defined as shredded sweet potato and the sugar smoke fuel is
further defined as dark brown sugar, wherein the sweet potato

6

is sixty percent of the total weight, and the dark brown sugar
is forty percent of the total weight.

11. The method of processing porkhide dog chews
described in claim 8, wherein the smoking process utilizes
smoking equipment comprising:

a smoke generator (1) heated to cause smoking fuels, dis-
posed in the smoke generator (1), to produce hot smoke
due to heating and oxygen-deficient carbonization;

a smoke box (2), for containing the smoke;

a box rack (3) for supporting the dried shaped hide product
in the smoke box (2), above the smoke generator (1); and

a box cover (4) for containing and redirecting the rising
smoke such that the smoke falls back slowly to the box
rack (3) and comes into contact with the dried shaped
hide product on the box rack (3) to result in a finished
porkhide dog chew product.

12. The method of processing porkhide dog chews
described in claim 11, wherein the smoke box (2) internal
diameter is greater than 50 cm and less than 120 cm, the
height from the smoke generator (1) to the box rack (3) is no
less than 20 cm and the height from the box rack (3) to the box
cover (4) is no greater than 25 cm.

13. The method of claim 8, further comprising:

heating a smoke fuel to generate gaseous smoke; and

placing the dried shaped hide product in contact with the
gaseous smoke to dye and flavor the dried shaped hide
product.

14. The method of claim 13, further comprising heating the
dried shaped hide product to enhance absorption of the gas-
eous smoke.

* * * * *