

US010200926B2

(12) **United States Patent**
Cho et al.

(10) **Patent No.:** **US 10,200,926 B2**
(45) **Date of Patent:** ***Feb. 5, 2019**

(54) **METHOD AND APPARATUS FOR VIDEO COMMUNICATION**

(71) Applicant: **Samsung Electronics Co., Ltd.**,
Suwon-si, Gyeonggi-do (KR)

(72) Inventors: **Hyung-Rae Cho**, Seoul (KR); **Sun-Ae Kim**, Seoul (KR); **Ji-Young Kwahk**,
Seongnam-si (KR); **Hyun-Joo Oh**,
Seoul (KR)

(73) Assignee: **Samsung Electronics Co., Ltd.**,
Suwon-si (KR)

(*) Notice: Subject to any disclaimer, the term of this
patent is extended or adjusted under 35
U.S.C. 154(b) by 0 days.

This patent is subject to a terminal dis-
claimer.

(21) Appl. No.: **15/917,129**

(22) Filed: **Mar. 9, 2018**

(65) **Prior Publication Data**

US 2018/0199253 A1 Jul. 12, 2018

Related U.S. Application Data

(63) Continuation of application No. 15/683,333, filed on
Aug. 22, 2017, now Pat. No. 9,961,602, which is a
(Continued)

(30) **Foreign Application Priority Data**

Oct. 30, 2009 (KR) 10-2009-0104523

(51) **Int. Cl.**
H04W 72/04 (2009.01)
H04W 36/14 (2009.01)
(Continued)

(52) **U.S. Cl.**
CPC **H04W 36/14** (2013.01); **H04B 17/318**
(2015.01); **H04L 43/16** (2013.01);
(Continued)

(58) **Field of Classification Search**
None
See application file for complete search history.

(56) **References Cited**

U.S. PATENT DOCUMENTS

6,751,204 B1 6/2004 Foti et al.
6,980,810 B1 12/2005 Gerakoulis et al.
(Continued)

FOREIGN PATENT DOCUMENTS

CN 1728692 A 2/2006
CN 101039236 A 9/2007
(Continued)

OTHER PUBLICATIONS

Chinese Office Action dated Feb. 2, 2018, issued in Chinese
Application No. 201510695079.9.

(Continued)

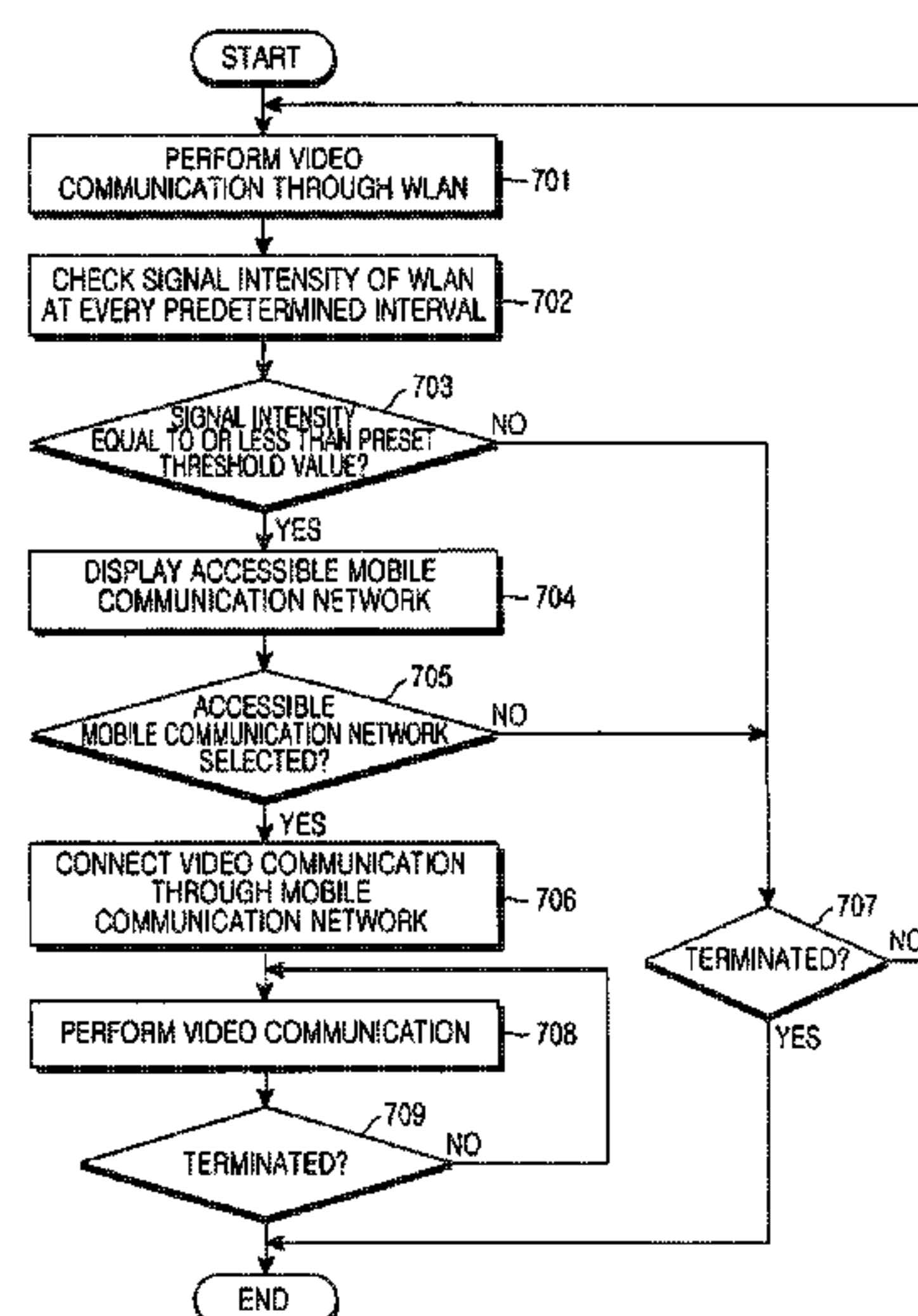
Primary Examiner — Jay P Patel

(74) *Attorney, Agent, or Firm* — Jefferson IP Law, LLP

(57) **ABSTRACT**

A method for changing a communication network for video communication is provided. The method includes performing, by a user equipment (UE), video communication through a mobile communication network; searching for whether there is a wireless local area network (WLAN) accessible by the UE; displaying, if a WLAN accessible by the UE is found, the accessible WLAN; and when the displayed WLAN is selected by a user, changing a communication network for the video communication to perform the video communication through the selected WLAN.

30 Claims, 7 Drawing Sheets



Related U.S. Application Data

continuation of application No. 15/493,974, filed on Apr. 21, 2017, now Pat. No. 9,820,202, which is a continuation of application No. 15/466,450, filed on Mar. 22, 2017, now Pat. No. 9,781,667, which is a continuation of application No. 15/331,244, filed on Oct. 21, 2016, now Pat. No. 9,769,724, which is a continuation of application No. 15/225,444, filed on Aug. 1, 2016, now Pat. No. 9,609,562, which is a continuation of application No. 14/808,371, filed on Jul. 24, 2015, now Pat. No. 9,413,800, which is a continuation of application No. 12/915,881, filed on Oct. 29, 2010, now Pat. No. 9,094,884.

(51) Int. Cl.

H04L 29/06 (2006.01)
H04W 72/08 (2009.01)
H04W 76/10 (2018.01)
H04W 76/25 (2018.01)
H04N 7/14 (2006.01)
H04W 4/02 (2018.01)
H04L 12/26 (2006.01)
H04L 29/12 (2006.01)
H04B 17/318 (2015.01)
H04M 1/725 (2006.01)
H04W 48/18 (2009.01)
H04W 84/12 (2009.01)
H04W 48/16 (2009.01)
H04W 88/06 (2009.01)
H04W 88/08 (2009.01)

(52) U.S. Cl.

CPC **H04L 61/2007** (2013.01); **H04L 65/60** (2013.01); **H04M 1/72563** (2013.01); **H04N 7/147** (2013.01); **H04N 7/148** (2013.01); **H04W 4/02** (2013.01); **H04W 48/18** (2013.01); **H04W 72/048** (2013.01); **H04W 72/085** (2013.01); **H04W 76/10** (2018.02); **H04W 76/25** (2018.02); **H04W 48/16** (2013.01); **H04W 84/12** (2013.01); **H04W 88/06** (2013.01); **H04W 88/08** (2013.01)

(56) References Cited**U.S. PATENT DOCUMENTS**

7,082,301 B2 7/2006 Jagadeensan et al.
7,310,527 B2 12/2007 Jagadeensan et al.
7,496,360 B2 2/2009 Sindhvani et al.
7,738,873 B2 6/2010 Jagadeensan et al.
7,751,818 B2 7/2010 Chaskar et al.
7,761,119 B2 7/2010 Patel
7,920,531 B2 4/2011 Gupta et al.
8,005,058 B2 8/2011 Pecen
8,064,911 B2 11/2011 Kim et al.
8,228,876 B2 7/2012 Lim
8,340,065 B2 12/2012 Gupta et al.
8,780,857 B2 7/2014 Balasubramanian et al.
9,936,387 B2 * 4/2018 Heredia H04W 12/06
2004/0044887 A1 3/2004 Park et al.
2004/0048612 A1 3/2004 Virtanen et al.
2004/0063426 A1 4/2004 Hunkeler
2004/0137902 A1 7/2004 Chaskar et al.

2004/0203732 A1 10/2004 Brusilovsky et al.
2005/0059400 A1 3/2005 Jagadeensan et al.
2005/0153736 A1 7/2005 Ganton
2005/0176420 A1 8/2005 Graves et al.
2005/0197156 A1 9/2005 Fourquin et al.
2005/0232247 A1 10/2005 Whitley et al.
2005/0288021 A1 12/2005 Hunkeler
2006/0002319 A1 1/2006 Lee et al.
2006/0105713 A1 5/2006 Zheng et al.
2006/0135150 A1 6/2006 Oh
2006/0187880 A1 8/2006 Choi
2006/0205407 A1 9/2006 Jagadeesan et al.
2006/0245408 A1 11/2006 Lee et al.
2007/0025297 A1 2/2007 Lee et al.
2007/0026866 A1 2/2007 Krishnamurthi et al.
2007/0049276 A1 3/2007 Rimoni et al.
2007/0140157 A1 6/2007 Fu et al.
2007/0165583 A1 7/2007 Pecen
2007/0218906 A1 9/2007 Melia et al.
2007/0253395 A1 11/2007 Graves et al.
2008/0076428 A1 3/2008 Jagadeesan et al.
2008/0132298 A1 6/2008 Roh et al.
2008/0159225 A1 7/2008 Kim et al.
2008/0232298 A1 9/2008 Kim et al.
2008/0307487 A1 12/2008 Choyi et al.
2008/0310612 A1 12/2008 Bloebaum et al.
2009/0135798 A1 5/2009 Pecen
2009/0137247 A1 5/2009 Mok
2009/0161579 A1 6/2009 Saaranen et al.
2009/0270090 A1 10/2009 Kawamura
2010/0061294 A1 * 3/2010 Proctor, Jr. H04W 4/029
370/328
2010/0068997 A1 3/2010 Dunko
2010/0113020 A1 5/2010 Subramanian et al.
2010/0220697 A1 9/2010 Liu et al.
2010/0291863 A1 11/2010 Hsu et al.
2010/0304738 A1 12/2010 Lim
2011/0078627 A1 3/2011 Zheng et al.
2011/0090982 A1 4/2011 Chen et al.
2011/0149937 A1 6/2011 Gupta et al.
2011/0302019 A1 12/2011 Proctor, Jr. et al.
2012/0224507 A1 9/2012 Nelson et al.
2013/0208700 A1 8/2013 Lim et al.
2013/0326356 A9 12/2013 Zheng et al.

FOREIGN PATENT DOCUMENTS

CN 101124788 A 2/2008
CN 101142565 A 3/2008
CN 101223811 A 7/2008
CN 101282264 A 10/2008
EP 1596564 A2 11/2005
GB 2410868 A 8/2005
JP 2006-229831 A 8/2006
JP 2008-206077 A 9/2008
KR 10-2006-0093216 A 8/2006
KR 10-2006-0114482 A 11/2006
KR 10-2007-0013444 A 1/2007
KR 10-2007-0024251 A 3/2007
KR 10-2008-0056914 A 6/2008
KR 10-2008-0095972 A 10/2008
KR 10-2009-0058777 A 6/2009
WO 2004012468 A1 2/2004

OTHER PUBLICATIONS

Korean Office Action dated May 10, 2018, issued in Korean Patent Application No. 10-2018-0019506.

* cited by examiner

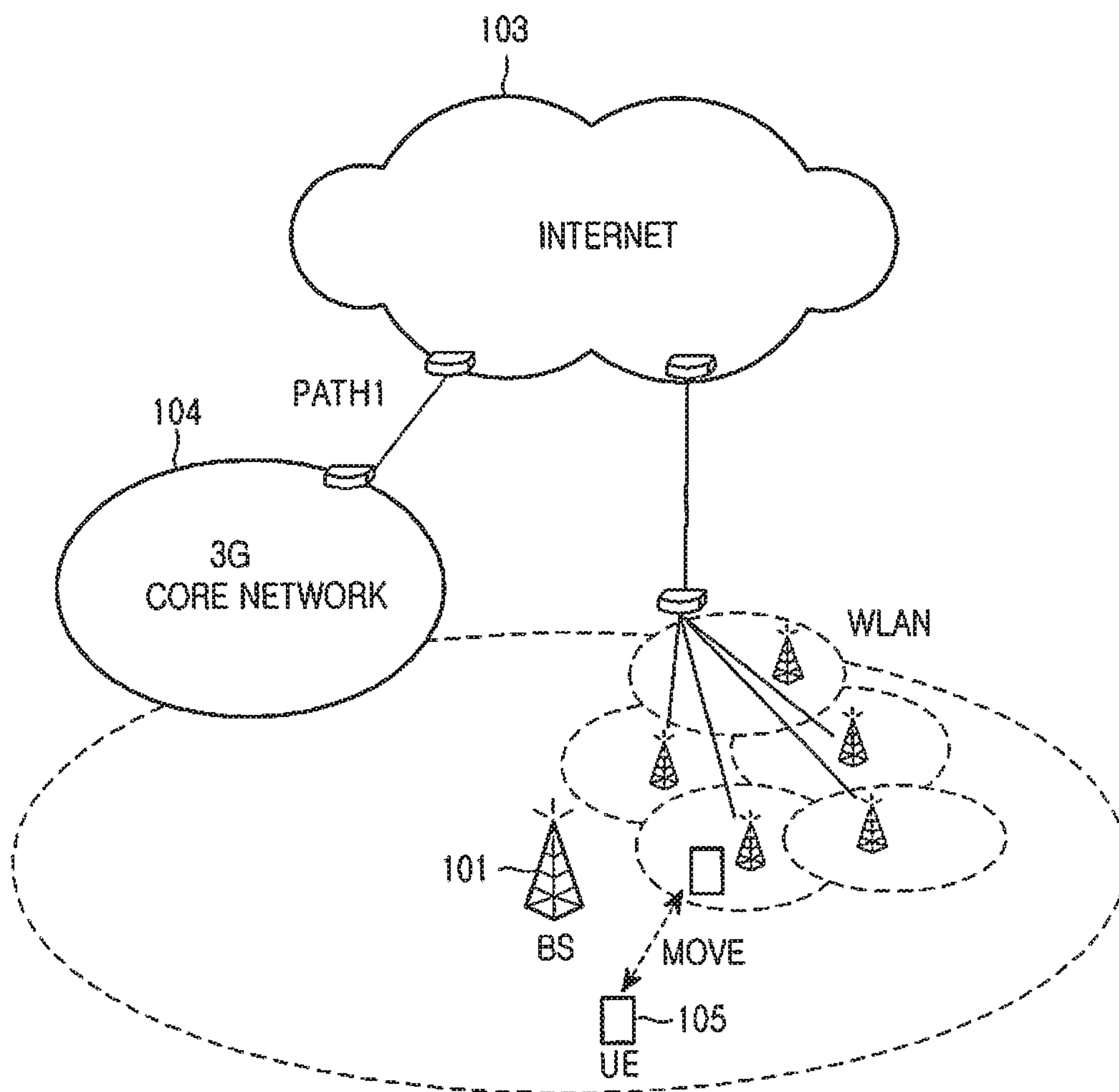


FIG.1

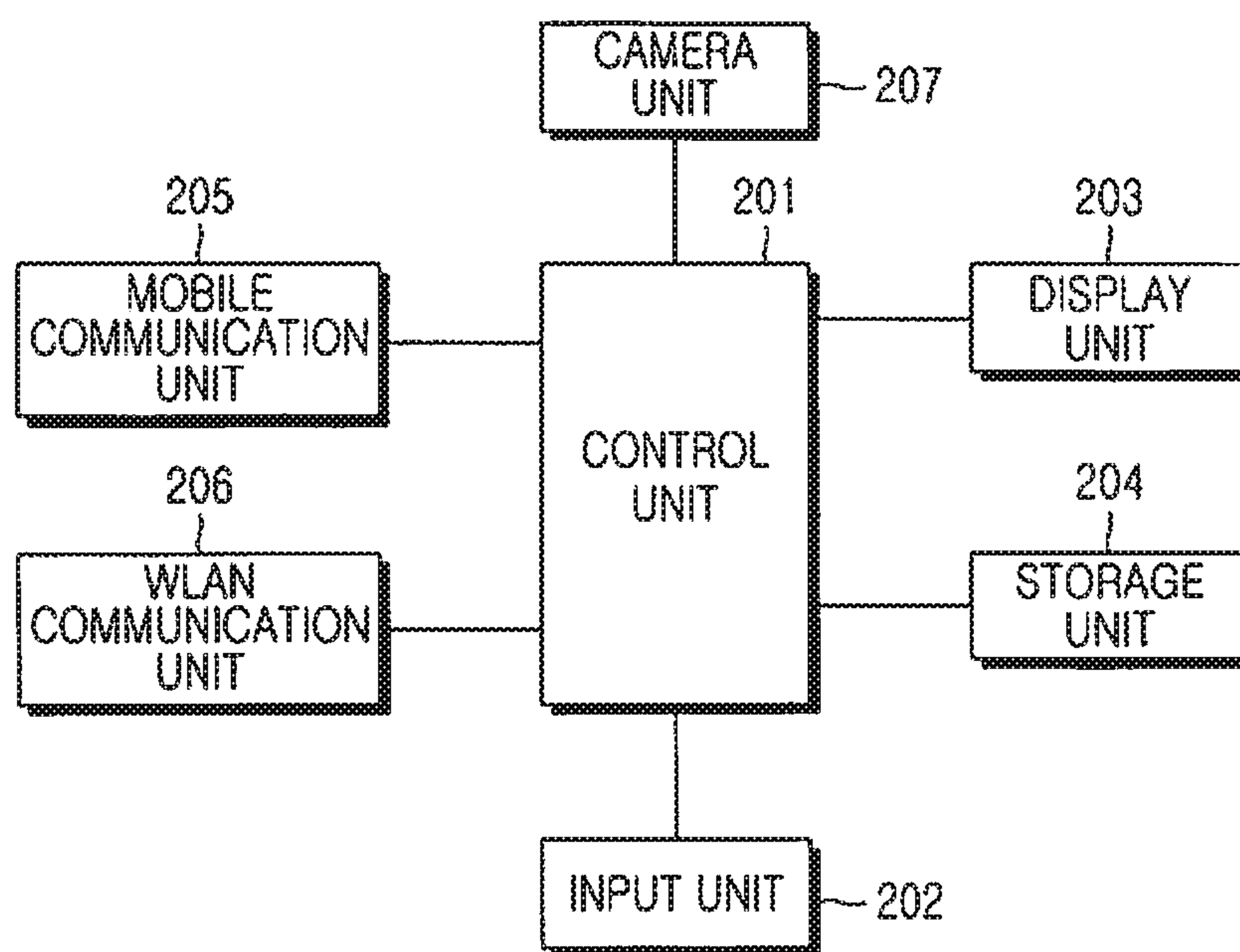


FIG.2

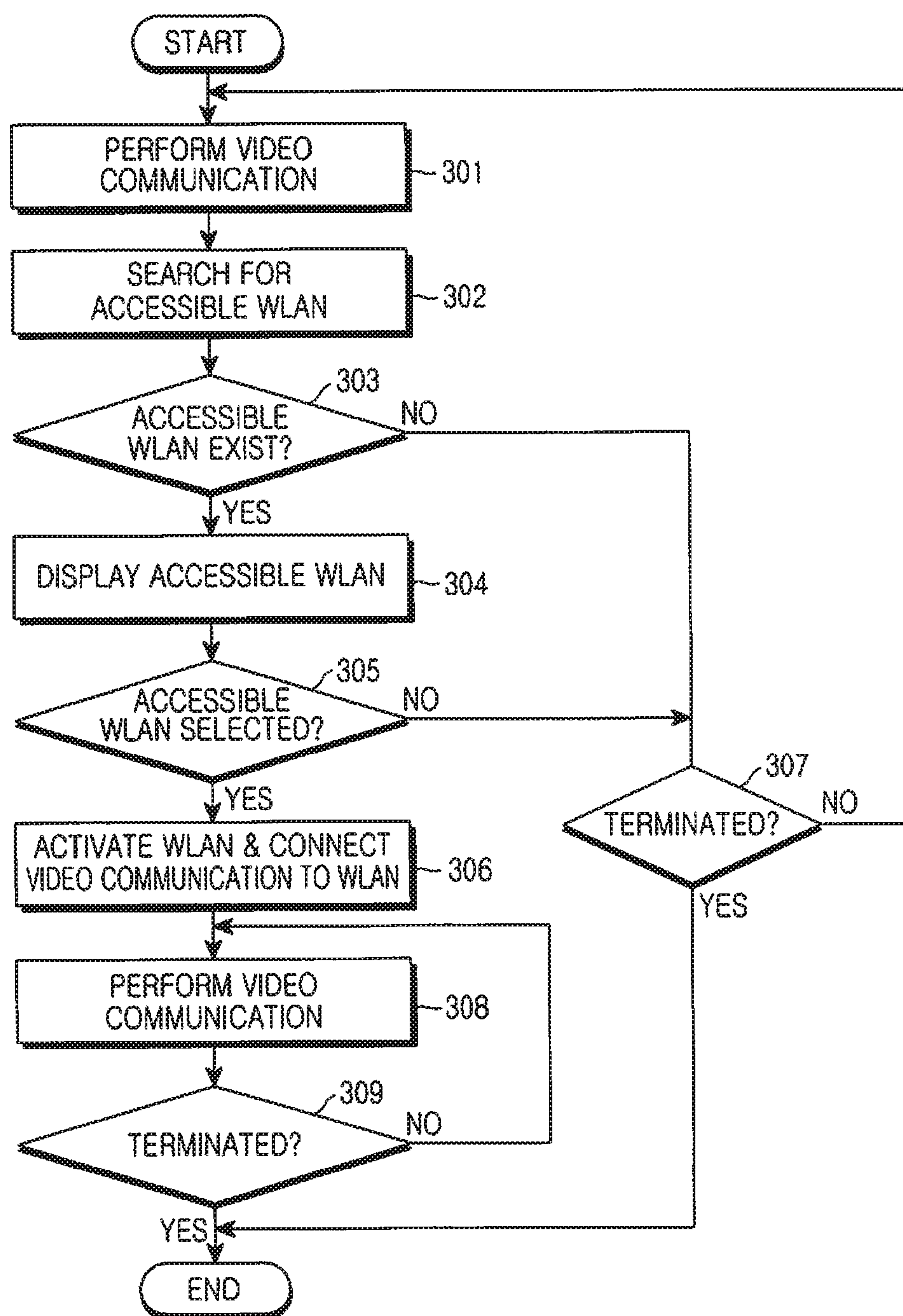


FIG.3

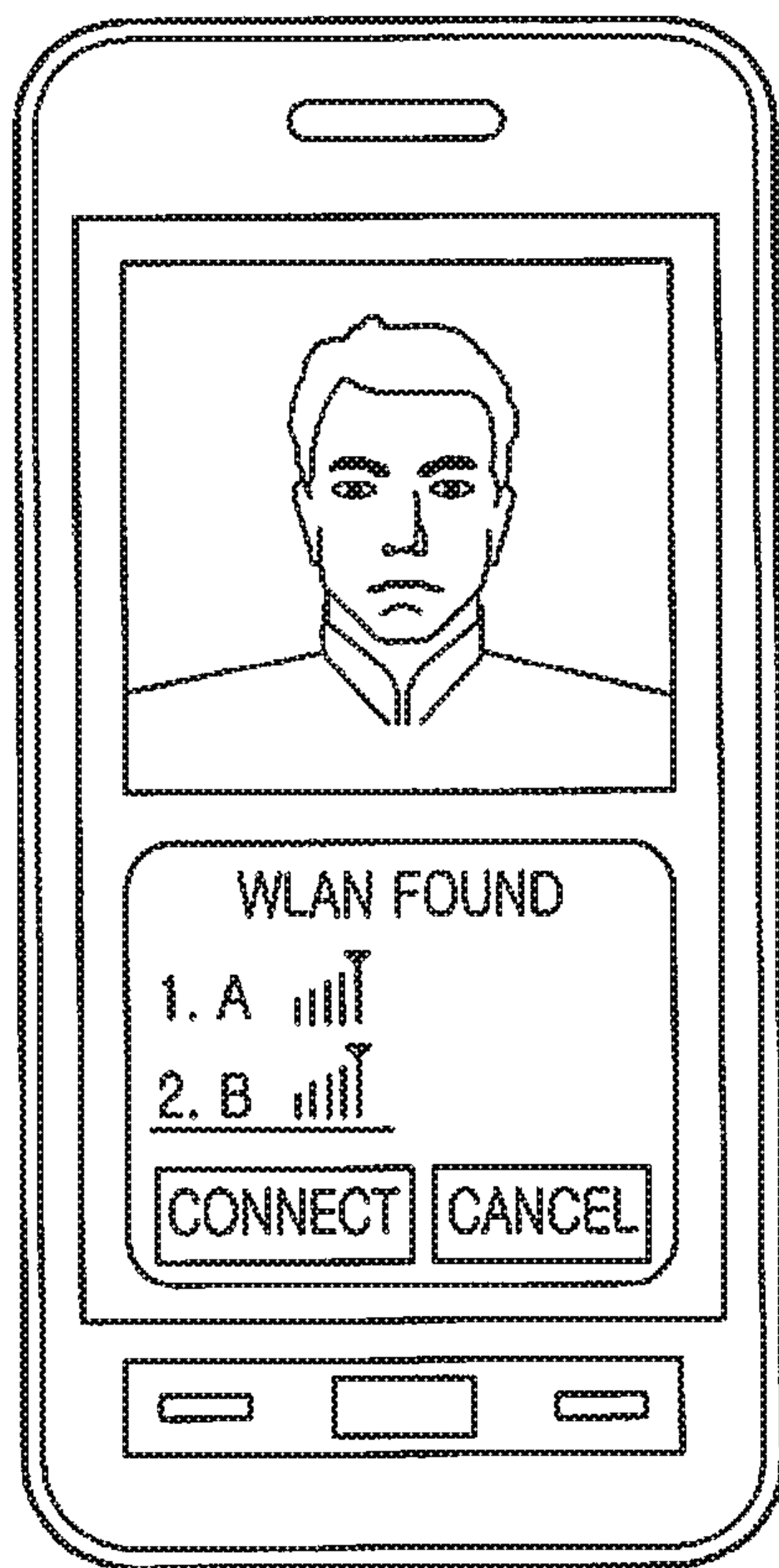


FIG.4

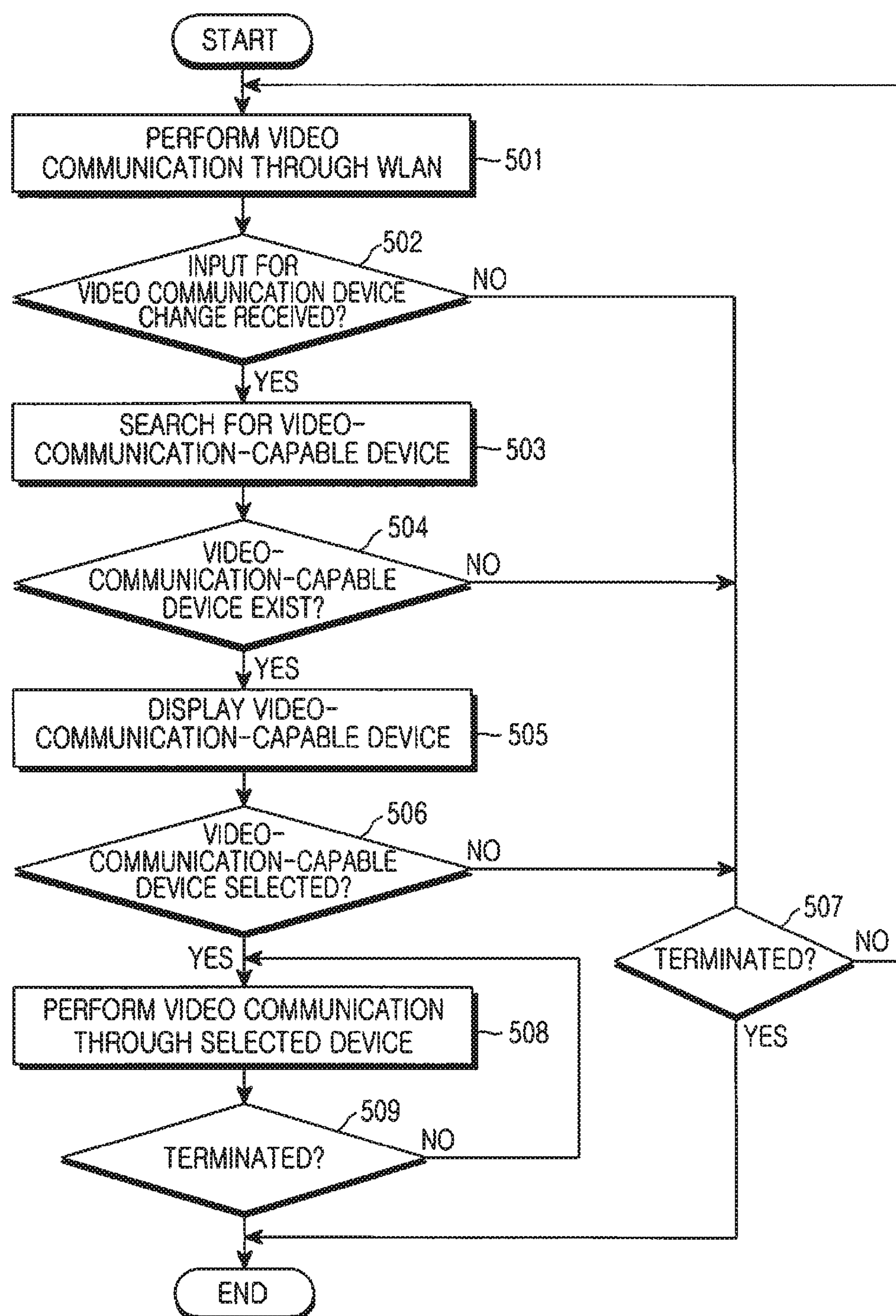


FIG.5

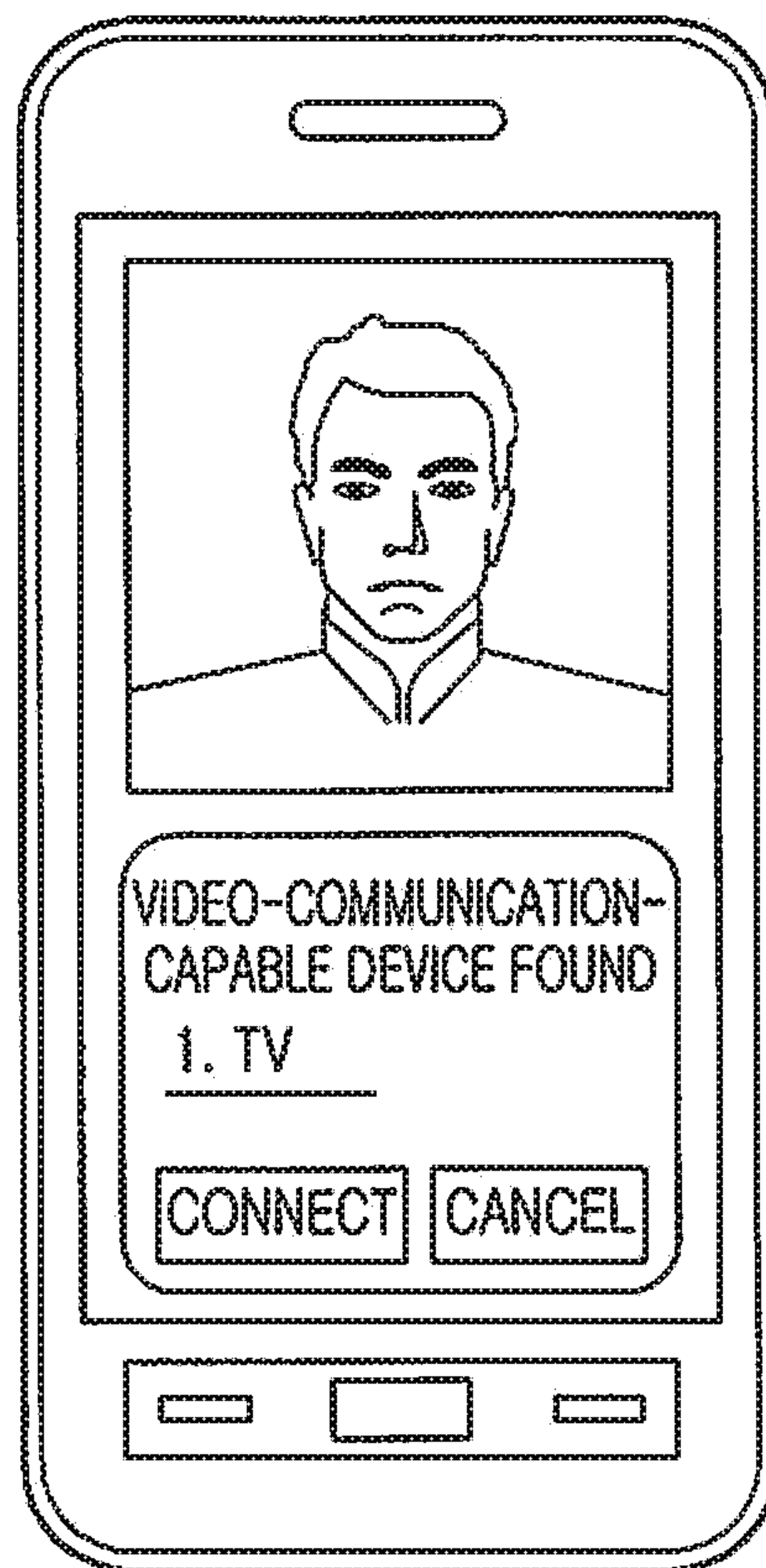


FIG.6

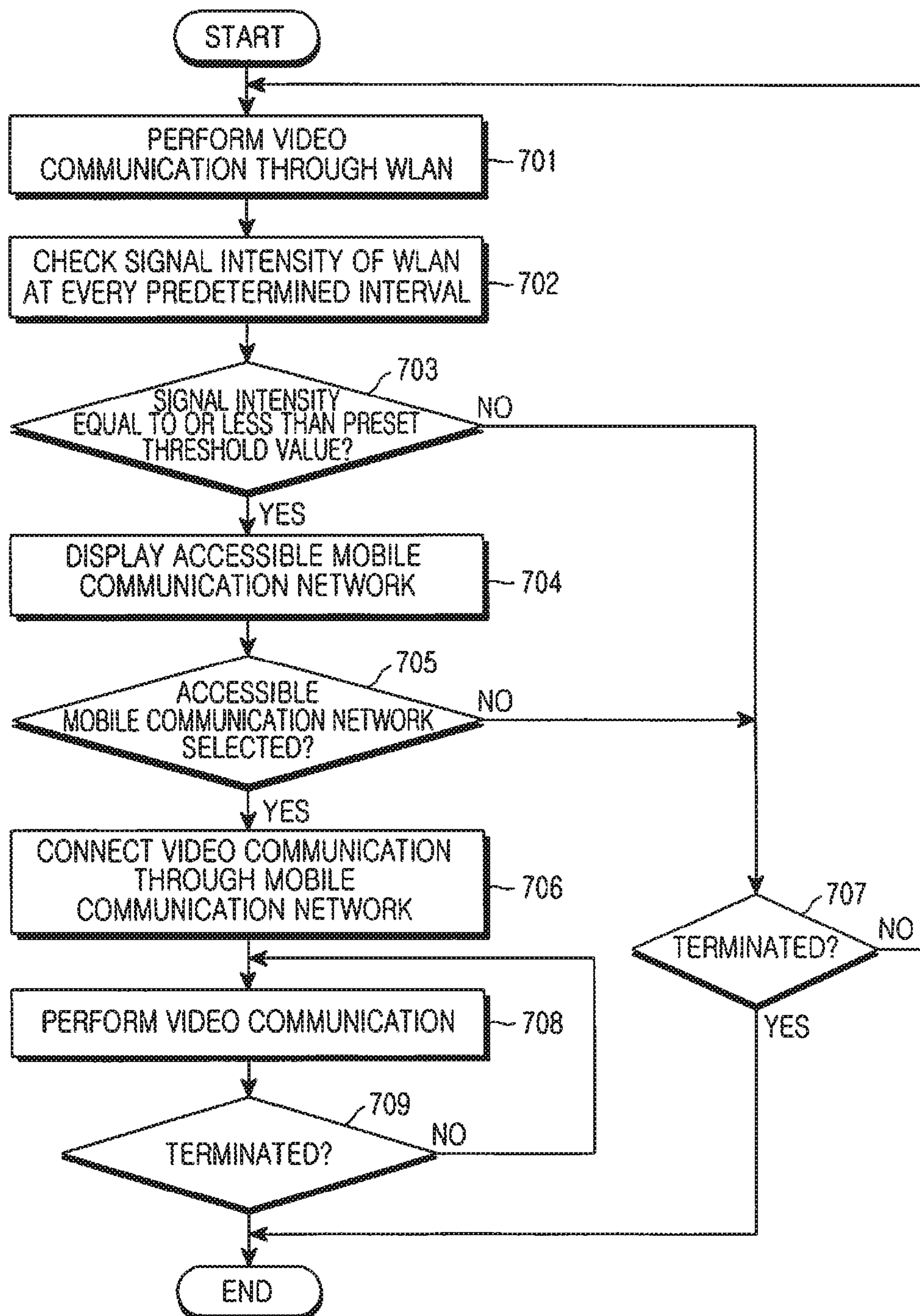


FIG. 7

METHOD AND APPARATUS FOR VIDEO COMMUNICATION

CROSS-REFERENCE TO RELATED APPLICATION(S)

This application is a continuation application of prior application Ser. No. 15/683,333, filed on Aug. 22, 2017, which is a continuation application of prior application Ser. No. 15/493,974, filed on Apr. 21, 2017, which issued as U.S. Pat. No. 9,820,202 on Nov. 14, 2017; which is a continuation application of prior application Ser. No. 15/466,450, filed on Mar. 22, 2017, which issued as U.S. Pat. No. 9,781,667 on Oct. 3, 2017; which is a continuation application of prior application Ser. No. 15/331,244, filed on Oct. 21, 2016; which issued as U.S. Pat. No. 9,769,724 on Sep. 19, 2017; which is a continuation application of prior application Ser. No. 15/225,444, filed on Aug. 1, 2016, which issued as U.S. Pat. No. 9,609,562 on Mar. 28, 2017; which is a continuation application of prior application Ser. No. 14/808,371, filed on Jul. 24, 2015, which issued as U.S. Pat. No. 9,413,800 on Aug. 9, 2016; which is a continuation application of prior application Ser. No. 12/915,881, filed on Oct. 29, 2010, which issued as U.S. Pat. No. 9,094,884 on Jul. 28, 2015; and claims the benefit under 35 U.S.C. § 119(a) of a Korean patent application filed on Oct. 30, 2009 in the Korean Intellectual Property Office and assigned Serial No. 10-2009-0104523, the entire disclosure of each of which is hereby incorporated by reference.

BACKGROUND OF THE INVENTION

1. Field of the Invention

The present invention generally relates to video communications, and, more particularly, to a method and apparatus of changing a communication network or a communication device for video communication during video communications in a user equipment (UE).

2. Description of the Related Art

Recently, with the rapid development of the information society, multi-purpose terminals including various functions in addition to merely transmitting voice, have been developed. Accordingly, a user equipment (UE) having both a function of transmitting/receiving image data and a function of transmitting/receiving voice has been developed. A representative multi-purpose UE is a camera phone.

When a user desires to take and keep a photograph of a certain scene or a subject required for business use, the camera phone allows the user to photograph and store a desired scene or subject in its internal memory. Additionally, the camera phone allows the photographed image to be wirelessly transmitted to another UE, and to be output onto the screen of a personal computer (PC) when the camera phone is connected to the PC. Recently, a technology that enables the user to photograph and transmit his/her own image in real-time to a counterpart through a wireless network to perform video communication has been developed and commercialized.

Generally, a base station (BS) in a wide-area mobile communication network has an advantage in that it has a wide service coverage from several kilometers to several tens of kilometers, and has a disadvantage in that the service fee is high. In contrast, an access point (AP) of a wireless local area network (WLAN) as described in the IEEE 802.11

protocol has advantages in that it provides a data rate higher than that of the wide-area mobile communication network, and low service fees. However, the WLAN has a disadvantage in that the service coverage of an AP is limited to several tens of meters.

Therefore, it is necessary to develop a method for performing video communication through the most appropriate communication network depending on the location of a UE when video communication is performed using the UE.

SUMMARY

Accordingly, the present invention has been made to solve the above-mentioned problems occurring in the prior art. The present invention provides a video communication method and apparatus for enabling a user equipment (UE) to perform video communication through a wireless local area network (WLAN) when the UE moves into an area in which the UE can access the WLAN during the video communication using the UE, and enabling the UE to perform video communication through a mobile communication network when the UE leaves the area of the WLAN during the video communication through the WLAN. Further, the present invention provides a video communication method and apparatus for enabling a communication device to be changed to another video-communication-capable device or enabling video communication to be performed through a device connected to a home network, during the video communication.

In accordance with an aspect of the present invention, a method for changing a communication network for video communication is provided. The method includes performing, by a UE, video communication through a mobile communication network; searching for whether there is a WLAN accessible by the UE; displaying, if a WLAN accessible by the UE is found, the accessible WLAN; and when the displayed WLAN is selected by a user, changing a communication network for the video communication to perform the video communication through the selected WLAN.

In accordance with another aspect of the present invention, a UE for changing a communication network for video communication is provided. The UE includes a mobile communication unit for performing wireless communication through a mobile communication network; a display unit for outputting various display data generated in the UE; an input unit for receiving an input from a user; a camera unit for photographing an image in real-time during the video communication, the camera unit including a camera; a storage unit for storing various information required for controlling an operation of the UE; and a control unit for controlling a general operation of the UE, searching for whether there is an accessible WLAN during communication through the mobile communication network, displaying, if an accessible WLAN is found, the accessible WLAN, and changing a communication network for the video communication, when the displayed WLAN is selected by the user, to perform the video communication through the selected WLAN.

BRIEF DESCRIPTION OF THE DRAWINGS

The above and other aspects, features and advantages of the present invention will be more apparent from the following detailed description taken in conjunction with the accompanying drawings, in which:

FIG. 1 is a view schematically illustrating a situation where a user equipment (UE) moves from a 3rd generation

(3G) mobile communication network to a wireless local area network (WLAN) according to an embodiment of the present invention;

FIG. 2 is a block diagram illustrating the configuration of a UE, according to an embodiment of the present invention;

FIG. 3 is a flowchart illustrating the steps of a communication network change operation from a 3G mobile communication network to a WLAN during video communication of a UE according to an embodiment of the present invention;

FIG. 4 is a view showing an example in which a UE displays WLANs on its screen when detecting the WLANs during video communication according to an embodiment of the present invention;

FIG. 5 is a flowchart illustrating the steps of a communication device change operation during video communication of a UE, according to an embodiment of the present invention;

FIG. 6 is a view showing an example in which a UE displays a video-communication-capable device on the screen thereof when detecting the video-communication-capable device during video communication according to an embodiment of the present invention; and

FIG. 7 is a flowchart illustrating the steps of a communication network change operation of a UE from a WLAN to a mobile communication network during video communication according to an embodiment of the present invention.

DETAILED DESCRIPTION

An apparatus and method according to an embodiment of the present invention will be described with reference to the accompanying drawings. Additionally, various specific definitions found in the following description, such as specific components and so on, are provided only to help with the general understanding of the present invention, and it is apparent to those skilled in the art that the present invention can be implemented without such definitions. Further, in the following description of the present invention, a detailed description of known functions and configurations incorporated herein will be omitted when it may make the subject matter of the present invention unclear.

The present invention provides a method for enabling a user equipment (UE) to use both a wide-area 3rd generation (3G) mobile communication network and a wireless local area network (WLAN) during video communication to compensate for the disadvantages of the wide-area communication network and WLAN and to provide advantages thereof. According to an embodiment of the present invention, when a UE in video communication moves to a WLAN service area (a "hotspot"), a vertical handover is performed from a base station (BS) of a wide-area mobile communication network to an access point (AP) of the hotspot, so that the UE can continuously perform the video communication in the hotspot. Also, when a UE is no longer within an area of a WLAN during video communication using the WLAN, the UE performs a handover to the mobile communication network to perform the video communication through the mobile communication network again.

Also, the present invention provides a method for changing a video communication device with another video communication device during video communication.

FIG. 1 is a view schematically illustrating a situation where a UE moves between a 3G mobile communication network and a WLAN, according to an embodiment of the present invention.

Referring to FIG. 1, when a UE 105 is located outside a hotspot coverage area, the UE 105 performs video communication with another UE through a BS 101 of a wide-area 3G mobile communication network (i.e., core network) 104, a radio network controller (RNC) (not shown), and a mobile switching center (MSC) (not shown). In contrast, when the UE 105 moves and is located within the hotspot coverage area, the UE 105 can perform video communication using a WLAN through an AP. That is, the UE 105 can perform video communication with another UE, which has been connected to the 3G mobile communication network, through paths PATH1, MSC, RNC, and BS of the 3G mobile communication network connected with the Internet 103 via a WLAN. Also, the UE 105 can transmit video communication data to an electronic device connected through a home network, which is based on the digital living network alliance (DLNA) standard, and perform video communication through the electronic device. That is, the user can perform video communication through an indoor electronic device which is connected with the UE 150 through a home network.

FIG. 2 is a block diagram illustrating the configuration of a UE according to an embodiment of the present invention.

Referring to FIG. 2, the UE 105 includes a mobile communication unit 205, an input unit 202, a storage unit 204, a camera unit 207, a display unit 203, a WLAN communication unit 206, and a control unit 201.

The mobile communication unit 205 enables the UE 105 to perform wireless communication through a mobile communication network. The mobile communication unit 205 includes an RF transmitter (not shown) for up-converting a frequency of a signal to be transmitted and amplifying the up-converted signal, and an RF receiver (not shown) for low-noise amplifying a received signal and down-converting a frequency of the low-noise amplified signal.

The display unit 203 may be constructed with a liquid crystal display (LCD), and displays various display data generated in the UE 105. When the LCD is implemented in a touch screen type, the display unit 230 may operate as an input means. According to an embodiment of the present invention, when a WLAN, which the UE 105 can access, is found during video communication through a mobile communication network, the display unit 203 may display information for notifying the user of the found WLAN. Additionally, the display unit 203 may display a mobile communication network accessible by the UE 105 when the signal strength of a WLAN becomes weak during video communication through the WLAN, or may display information for notifying the user of a device capable of performing video communication in response to the request of the user when there is a device capable of performing video communication.

The input unit 202 includes keys for inputting numeric and text information, and function keys for setting various functions, and senses an input by the user.

The camera unit 207 includes at least one camera, and photographs an image. According to an embodiment of the present invention, the camera unit 207 controls the camera and photographs an image in real-time when the UE enters a video communication mode under the control of the control unit 201 to be described later.

The storage unit 204 may be configured by a program memory and a data memory, and stores various information required for controlling the operation of the UE 105. According to an embodiment of the present invention, the storage unit 204 may store information, such as a time interval for searching for a WLAN during video communi-

5

cation through the 3G mobile communication network, and may store information on predetermined video-communication-capable devices.

The WLAN communication unit **206** performs WLAN communication through an AP by means of a WLAN.

The control unit **201** controls the general operation of the UE **105**. According to an embodiment of the present invention, the control unit **201** allows the UE to perform video communication through a mobile communication network, searches for whether or not there is a WLAN currently accessible by the UE at every predetermined interval, displays the accessible WLAN through the display unit **203** when one is found, and controls video communication to be performed through the displayed WLAN using the WLAN communication unit **206** when the displayed WLAN is selected by the user through the input unit **202**.

Also, the control unit **201** performs a control operation to perform video communication through a WLAN, to measure the received signal strength indication (RSSI) of a signal transmitted/received through the WLAN at every predetermined interval, to display one or more mobile communication networks accessible by the UE **105** through the display unit **203** when the RSSI becomes lower than a preset threshold value, and to perform the video communication through a selected mobile communication network using the mobile communication unit **205** when one of the displayed mobile communication networks is selected by the user.

FIG. **3** is a flowchart illustrating the steps of a communication network change operation from a 3G mobile communication network to a WLAN during video communication of a UE, according to an embodiment of the present invention. Referring to FIG. **3**, when the UE **105** performs video communication through a mobile communication network in step **301**, the UE **105** searches for a WLAN, which the UE **105** can access, at every predetermined interval in step **302**.

In step **302**, the UE **105** periodically performs a search for a WLAN. Explaining the WLAN search operation in more detail, the UE **105** may be set to perform the WLAN search operation, regardless of the location of the UE **105**. In this case, the UE **105** continuously searches for a WLAN signal at preset periods to perform a search for an accessible WLAN AP.

Also, the UE **105** may be set to perform a search for a WLAN AP only in a case in which the UE **105** is located in a preset position. In such a scheme, the location information of the UE **105** is to be continuously or periodically identified through either a GPS module installed in the UE **105** or through a base station which performs communication with the UE **105**, and to perform a WLAN search when the UE **105** enters a preset area. Meanwhile, the UE **105** may be set to perform a WLAN search at preset periods when the UE **105** continuously stays in the preset area.

Additionally, the UE **105** may store access information when the UE **105** accesses a WLAN, and may be set to perform an access to an AP included in previous access history of the UE **105** when a WLAN is searched and the AP included in the previous access history exists. Also, the UE **105** may be set to search for only an AP included in previous access history of the UE **105** when a WLAN is searched.

Generally, the WLAN hotspot area is smaller than the service coverage of the entire wide-area mobile communication network, which may vary depending on area characteristics. Accordingly, the WLAN search interval of the UE **105** may be set appropriately according to the circumstances and location of the UE **105**. Meanwhile, a BS **101** in a wide-area mobile communication network, which includes a

6

hotspot, may notify the UE **105** that a hotspot area usable by the UE **105** exists in the service coverage of the BS **101**. In this case, the UE **105** may be set to periodically perform a search for finding a hotspot only when the UE **105** has received information that a hotspot area usable by the UE **105** exists in the service coverage of the BS **101** from the BS **101**.

In step **303**, the UE **105** determines if there is a WLAN accessible by the UE **105** as a result of the search. When it is determined that there is no WLAN accessible by the UE **105** in step **303**, the UE **105** proceeds to step **307**. When the video communication is not terminated in step **307**, the UE **105** proceeds to step **301**, in which the UE **105** continues to perform the video communication through the 3G mobile communication network.

In contrast, when it is determined that there is a WLAN accessible by the UE **105** in step **303**, the UE **105** proceeds to step **304**, in which the UE **105** displays the WLAN accessible by the UE **105**. In this case, when a plurality of WLANs is detected, a user interface for enabling the user to select a desired WLAN (i.e., an AP) among the plurality of WLANs is displayed. FIG. **4** is a view showing an example in which a UE displays WLANs on the screen thereof when detecting the WLANs during video communication according to an embodiment of the present invention. As shown in FIG. **4**, when finding WLANs accessible by the UE **105** during video communication, the UE **105** may provide the types and signal intensities of the found WLANs through the screen thereof.

Next, in step **305**, the UE **105** determines if an accessible WLAN is selected by the user. When it is determined that no WLAN is selected by the user (e.g., when the user cancels the selection) in step **305**, the UE **105** proceeds to step **307**. When the UE **105** continues to be in communication in step **307**, the UE **105** proceeds to step **301**, in which the UE **105** continues to perform the video communication.

When the user selects a WLAN to access through a displayed screen, as shown in FIG. **4**, in step **305**, the UE **105** proceeds to step **306**, in which the UE **105** activates the selected WLAN and connects the video communication to the selected WLAN. In this case, when access to the WLAN requires an input of personal information, the personal information may be input in the form of a popup window on the video communication screen so that the UE **105** can access the WLAN. When a network change is generated to perform the video communication through the WLAN, as described above, the transmission path of video communication data of the user is changed such that the video communication data is transferred to the Internet through the WLAN and is transferred to an MSC and RNC of the mobile communication network through the Internet. In contrast, a network change is generated such that the video communication data of a counterpart UE is transferred to the Internet from the mobile communication network including the RNC and MSC and is then transferred to the corresponding WLAN through the Internet. In addition, the UE **105** is allocated an IP for performing communication through the WLAN, and performs a change operation such that the UE **105** can transmit/receive video communication data, which has been transmitted/received through the mobile communication network, through the WLAN.

In step **308**, the UE **105** performs video communication through the selected WLAN. If the video communication is terminated in step **309**, the operation ends, and, if not, the UE **105** continues to perform steps **308** and **309** of performing the video communication.

FIG. 5 is a flowchart illustrating the steps of a communication device change operation during video communication of a UE, according to an embodiment of the present invention. Specifically, FIG. 5 illustrates the steps of a communication device change operation to another device capable of performing video communication while video communication is being performed through either a WLAN or through a mobile communication network in an area, such as a home or office, where the WLAN is accessible. According to the present invention, while performing video communication, the UE can transmit video communication data to an electronic device connected through a home network, which is based on the DLNA standard so that the user can perform the video communication through the electronic device.

Additionally, there may be a separate server or controller connected to the WLAN for control operations, such as searching for information on video-communication-capable devices, changing an IP, etc. Additionally, when a home network is configured, the UE may perform operations, such as searching for information on devices capable of performing video communication through a server of the home network, storing the information, changing an IP, and the like.

Moreover, when a video communication device is changed to an another device connected to a mobile communication network, the video communication device may be changed to a preset other video-communication-capable device which has been set by the user in advance.

Referring to FIG. 5, first, when the UE 105 performs video communication in step 501, the UE 105 determines if the UE 105 receives an input for a video communication device change from the user in step 502. When it is determined that the UE 105 did not receive an input for a video communication device change in step 502, the UE 105 proceeds to step 507. When the video communication is not terminated in step 507, the UE 105 proceeds to step 501, in which the UE 105 continues to perform the video communication.

In contrast, when it is determined that the UE 105 receives an input for a video communication device change in step 502, the UE 105 proceeds to step 503, in which the UE 105 searches for a video-communication-capable device. In this case, the UE 105 may perform the search for a video-communication-capable device through the use of a separate server or controller in order to search for a device to perform video communication through a WLAN, as described above. Also, the server or the UE 105 may store information on video-communication-capable devices in advance, and search the stored devices for a connectable device currently connected to a WLAN AP. Also, in order to search for a device to perform video communication through a mobile communication network, the UE 105 determines if there is a device capable of video communication through a mobile communication network which is established by the user in advance.

In step 504, the UE 105 determines if there is a video-communication-capable device as a result of the search. When it is determined that there is no video-communication-capable device in step 504, the UE 105 proceeds to step 507. When the video communication is not terminated in step 507, the UE 105 proceeds to step 501, in which the UE 105 continues to perform the video communication.

In contrast, when it is determined that there is a video-communication-capable device in step 504, the UE 105 proceeds to step 505, in which the UE 105 displays the video-communication-capable device. FIG. 6 is a view

showing an example in which a UE displays a video-communication-capable device on its screen when detecting the video-communication-capable device during video communication. As shown in FIG. 6, when finding a video-communication-capable device, the UE 105 may provide basic information, such as the type and name of the found device, through the screen of the UE 105.

Next, in step 506, the UE 105 determines if the video-communication-capable device is selected by the user for switching of the video communication. When it is determined that the video-communication-capable device is not selected (e.g., when the user cancels the selection), the UE 105 proceeds to step 507. When the UE 105 continues to be in communication in step 507, the UE 105 proceeds to step 501, in which the UE 105 continues to perform the video communication.

In contrast, when it is determined that the user selects the video-communication-capable device through the screen shown in FIG. 6 in step 506, the UE 105 proceeds to step 508, in which the UE 105 performs a video communication device change operation so that the video communication can be performed through the selected device. Also, in the case of a UE connected with a home network, the original UE having performed video communication may transmit video communication data to another electronic device connected with the home network to perform the video communication using the other electronic device. In this case, the UE functions as a gateway for video communication.

If the video communication is terminated in step 509, the operation ends, and if not, the UE 105 continues to perform steps 508 of performing the video communication.

The operation of changing video communication devices as described above may be performed simultaneously with a change of communication network for video communication. For example, when the user enters a home while performing video communication through a mobile communication network using his/her own UE outside the house, the user can change the communication network for video communication to an indoor WLAN, and change the video communication device to another device, such as a TV, connected to the WLAN or home network, thereby continuously performing the video communication.

FIG. 7 is a flowchart illustrating the steps of a communication network change operation from a WLAN to a mobile communication network during video communication of a UE according to an embodiment of the present invention. Referring to FIG. 7, first, when the UE performs video communication through a WLAN in step 701, the UE measures a signal strength of the WLAN at every predetermined interval in step 702.

Next, in step 703, the UE determines if the signal strength measured in step 702 is less than a preset threshold value. Such a signal strength may be measured through the use of a signal-to-noise ratio (SNR) or RSSI. When the measured signal strength is not less than the preset threshold value as a result of the determination, the UE performs step 707, in which the UE determines if the video communication is terminated. When the video communication is not terminated, the UE performs step 701, in which the UE continuously performs the video communication through the 3G mobile communication network.

In contrast, when it is determined in step 703 that the measured signal strength is less than a preset threshold value, the UE performs step 704, in which the UE displays a mobile communication network which is currently accessible by the UE performing the video communication. In this

case, a user interface for checking an access to the accessible mobile communication network is displayed.

In step **705**, the UE determines if an accessible mobile communication network is selected by the user. When it is determined that the mobile communication network is not selected by the user (e.g., when the user cancels the selection) in step **705**, the UE performs step **707**. When it is determined in step **707** that the UE continues to be in communication, the UE performs step **701**, in which the UE continues to perform the video communication.

When the user selects a mobile communication network to be accessed by the UE in step **705**, the UE performs step **706**, in which the UE changes the communication network for the video communication to the selected mobile communication network. When the change to perform video communication through a mobile communication network, as described above, is made, the route of video communication data transmitted/received through the WLAN is changed to be transmitted/received through an MSC and RNC of the mobile communication network.

Next, in step **708**, the UE performs video communication through the selected mobile communication network. If the video communication is terminated in step **709**, the operation ends, and, if not, the UE continues to perform steps **708** of performing the video communication.

According to an embodiment of the present invention, when a UE moves into a WLAN-accessible area during video communication using the UE, the UE can perform the video communication through the WLAN, so that the user can perform video communication using the most appropriate communication network according to the location of the moving UE during the video communication.

Accordingly, in the course of performing video communication using a UE in the outside, when the user moves into a hotspot, such as a home or office, where a WLAN AP exists, the user can perform the video communication through a WLAN, which is lower-priced. Also, since the video communication can be switched to another video-communication-capable device (e.g., an internet protocol (IP) television (TV), a home telephone, etc.), it is possible to implement video communication regardless of place and device. In addition, conversely, even if the user moves to the outside in the course of performing video communication through a WLAN in the house, a communication network for the video communication is changed to the mobile communication network, and a communication device is changed to the UE, so that it is possible to continuously perform the video communication.

The operation and construction of the video communication method and apparatus according to an embodiment of the present invention, can be implemented as described above. While the invention has been shown and described with reference to certain embodiments thereof, it will be understood by those skilled in the art that various changes in form and details may be made therein without departing from the spirit and scope of the invention as defined by the appended claims.

What is claimed is:

1. A method for performing video communication by an electronic device, the method comprising:

performing the video communication with an external device using a mobile communication network by sending video communication data towards the external device through a mobile communication interface of the electronic device and by receiving video communication data originating from the external device through the mobile communication interface of the

electronic device, wherein video communication data sent towards the external device includes image data obtained through a camera of the electronic device;

displaying a video image of the video communication being performed with the external device using the mobile communication network on a touch screen of the electronic device;

while displaying the video image of the video communication being performed with the external device using the mobile communication network:

identifying, by the electronic device, one or more wireless local area networks (WLANs) available at a current location of the electronic device based on a signal received from each of the one or more WLANs,

selecting, by the electronic device, a WLAN from the identified one or more WLANs, and

initiating, by the electronic device, an operation to change a communication network for the video communication from the mobile communication network to the selected WLAN; and

performing, with the external device using the selected WLAN to which the communication network for the video communication is changed from the mobile communication network, the video communication by sending video communication data towards the external device through a WLAN communication interface of the electronic device and by receiving video communication data originating from the external device through the WLAN communication interface of the electronic device, wherein video communication data sent towards the external device includes image data obtained through the camera of the electronic device, wherein, while displaying the video image of the video communication being performed with the external device using the mobile communication network, the selecting of the WLAN from the identified one or more WLANs comprises:

based on access information stored in a memory of the electronic device, determining whether any of the identified one or more WLANs is previously accessed, the access information being stored when a WLAN is accessed by the electronic device,

based on determining that a WLAN of the identified one or more WLANs is previously accessed, automatically selecting the WLAN determined to be previously accessed, and

based on determining that none of the identified one or more WLANs is previously accessed, selecting a WLAN corresponding to a user interface item selected by a user touch input for the user interface item from one or more user interface items displayed on the touch screen, wherein the one or more user interface items respectively correspond to the identified one or more WLANs, and wherein each of the displayed one or more user interface items includes signal strength information for a corresponding WLAN.

2. The method of claim 1, wherein each of the displayed one or more user interface items further includes at least one of type information or an alphanumeric identifier for a corresponding WLAN.

3. The method of claim 1, wherein, when the WLAN corresponding to the user interface item selected by the user touch input is selected, the initiating is performed in response to receiving, through the touch screen, another user touch input for connecting to the selected WLAN.

11

4. The method of claim 3, further comprising:
while displaying the video image of the video communication being performed with the external device using the mobile communication network, displaying a user interface for obtaining information for connecting to the selected WLAN on the touch screen in response to receiving the other user touch input; and
connecting to the selected WLAN, through which to send and receive video communication data, using the obtained information through the displayed user interface.
5. The method of claim 1, wherein, while the user interface item selected by the user touch input is displayed, the selection of the WLAN corresponding to the user interface item is canceled based on an input being received.
6. The method of claim 1, further comprising:
displaying information indicating that at least one WLAN is identified along with the video image of the video communication being performed using the mobile communication network,
wherein the information indicating that at least one WLAN is identified is distinct from the one or more user interface items.
7. The method of claim 1, wherein the video communication is performed using the mobile communication network until the video communication is performed using the selected WLAN.
8. The method of claim 1, wherein the determining of whether any of the identified one or more WLANs is previously accessed comprises determining whether information regarding an access point (AP) of a corresponding WLAN is included in the access information.
9. An electronic device for performing video communication, the electronic device comprising:
a memory storing instructions; and
a processor configured to execute the instructions to at least:
control to perform the video communication with an external device using a mobile communication network by sending video communication data towards the external device through a mobile communication interface of the electronic device and by receiving video communication data originating from the external device through the mobile communication interface of the electronic device, wherein video communication data sent towards the external device includes image data obtained through a camera of the electronic device;
control to display a video image of the video communication being performed with the external device using the mobile communication network on a touch screen of the electronic device;
while displaying the video image of the video communication being performed using the mobile communication network, control to:
identify one or more wireless local area networks (WLANs) available at a current location of the electronic device based on a signal received from each of the one or more WLANs,
select a WLAN from the identified one or more WLANs, and
initiate an operation to change a communication network for the video communication from the mobile communication network to the selected WLAN; and

12

- control to perform, with the external device using the selected WLAN to which the communication network for the video communication is changed from the mobile communication network, the video communication by sending video communication data towards the external device through a WLAN communication interface of the electronic device and by receiving video communication data originating from the external device through the WLAN communication interface of the electronic device, wherein video communication data sent towards the external device includes image data obtained through the camera of the electronic device,
wherein, while displaying the video image of the video communication being performed with the external device using the mobile communication network, the processor is configured to execute the instructions to control to select the WLAN from the identified one or more WLANs by:
based on access information stored in a memory of the electronic device, controlling to determine whether any of the identified one or more WLANs is previously accessed, the access information being stored when a WLAN is accessed by the electronic device,
based on determining that a WLAN of the identified one or more WLANs is previously accessed, controlling to automatically select the WLAN determined to be previously accessed, and
based on determining that none of the identified one or more WLANs is previously accessed, controlling to select a WLAN corresponding to a user interface item selected by a user touch input for the user interface item from one or more user interface items displayed on the touch screen, wherein the one or more user interface items respectively correspond to the identified one or more WLANs, and wherein each of the displayed one or more user interface items includes signal strength information for a corresponding WLAN.
10. The electronic device of claim 9, wherein each of the displayed one or more user interface items further includes at least one of type information or an alphanumeric identifier for a corresponding WLAN.
11. The electronic device of claim 9, wherein, when the WLAN corresponding to the user interface item selected by the user touch input is selected, the processor is configured to execute the instructions to control to initiate the operation to change the communication network in response to receiving, through the touch screen, another user touch input for connecting to the selected WLAN.
12. The electronic device of claim 11, wherein the processor is configured to execute the instructions further to:
while displaying the video image of the video communication being performed with the external device using the mobile communication network, control to display a user interface for obtaining information for connecting to the selected WLAN on the touch screen in response to receiving the other user touch input; and
control to connect to the selected WLAN, through which to send and receive video communication data, using the obtained information through the displayed user interface.
13. The electronic device of claim 9, wherein, while the user interface item selected by the user touch input is displayed, the selection of the WLAN corresponding to the user interface item is canceled based on an input being received.

13

14. The electronic device of claim 9,
wherein the processor is configured to execute the instruc-
tions further to control to display information indicat-
ing that at least one WLAN is identified along with the
video image of the video communication being per- 5
formed using the mobile communication network, and
wherein the information indicating that at least one
WLAN is identified is distinct from the one or more
user interface items.

15. The electronic device of claim 9, wherein the video 10
communication is performed using the mobile communica-
tion network until the video communication is performed
using the selected WLAN.

16. The electronic device of claim 9, wherein the proces- 15
sor is configured to execute the instructions to control to
determine whether any of the identified one or more WLANs
is previously accessed by controlling to determine whether
information regarding an access point (AP) of a correspond-
ing WLAN is included in the access information. 20

17. A non-transitory computer readable storage medium
with instructions stored thereon, the instructions executable
by a processor of an electronic device for performing a video
communication to cause the processor to at least:

control to perform the video communication with an 25
external device using a mobile communication network
by sending video communication data towards the
external device through a mobile communication inter-
face of the electronic device and by receiving video
communication data originating from the external 30
device through the mobile communication interface of
the electronic device, wherein video communication
data sent towards the external device includes image
data obtained through a camera of the electronic
device;

control to display a video image of the video communi-
cation being performed with the external device using
the mobile communication network on a touch screen
of the electronic device;

while displaying the video image of the video communi- 40
cation being performed using the mobile communica-
tion network, control to:

identify one or more wireless local area networks
(WLANs) available at a current location of the
electronic device based on a signal received from 45
each of the one or more WLANs,

select a WLAN from the identified one or more
WLANs, and

initiate an operation to change a communication net- 50
work for the video communication from the mobile
communication network to the selected WLAN; and

control to perform, with the external device using the
selected WLAN to which the communication network
for the video communication is changed from the
mobile communication network, the video communi- 55
cation by sending video communication data towards
the external device through a WLAN communication
interface of the electronic device and by receiving
video communication data originating from the exter-
nal device through the WLAN communication inter- 60
face of the electronic device, wherein video commu-
nication data sent towards the external device includes
image data obtained through the camera of the elec-
tronic device,

wherein, while displaying the video image of the video 65
communication being performed with the external
device using the mobile communication network, the

14

instructions cause the processor to control to select the
WLAN from the identified one or more WLANs by:

based on access information stored in a memory of the
electronic device, controlling to determine whether
any of the identified one or more WLANs is previ-
ously accessed, the access information being stored
when a WLAN is accessed by the electronic device,
based on determining that a WLAN of the identified
one or more WLANs is previously accessed, con-
trolling to automatically select the WLAN deter-
mined to be previously accessed, and

based on determining that none of the identified one or
more WLANs is previously accessed, controlling to
select a WLAN corresponding to a user interface
item selected by a user touch input for the user
interface item from one or more user interface items
displayed on the touch screen, wherein the one or
more user interface items respectively correspond to
the identified one or more WLANs, and wherein
each of the displayed one or more user interface
items includes signal strength information for a
corresponding WLAN.

18. The non-transitory computer storage medium of claim
17, wherein each of the displayed one or more user interface
items further includes at least one of type information or an
alphanumeric identifier for a corresponding WLAN.

19. The non-transitory computer storage medium of claim
17, wherein, when the WLAN corresponding to the user
interface item selected by the user touch input is selected,
the instructions cause the processor to control to initiate the
operation to change the communication network in response
to receiving, through the touch screen, another user touch
input for connecting to the selected WLAN.

20. The non-transitory computer storage medium of claim
19, wherein the instructions cause the processor further to:
while displaying the video image of the video communi-
cation being performed with the external device using
the mobile communication network, control to display
a user interface for obtaining information for connect-
ing to the selected WLAN on the touch screen in
response to receiving the other user touch input; and
control to connect to the selected WLAN, through which
to send and receive video communication data, using
the obtained information through the displayed user
interface.

21. The non-transitory computer storage medium of claim
17, wherein, while the user interface item selected by the
user touch input is displayed, the selection of the WLAN
corresponding to the user interface item is canceled based on
an input being received.

22. The non-transitory computer storage medium of claim
17,

wherein the instructions cause the processor further to
control to display information indicating that at least
one WLAN is identified along with the video image of
the video communication being performed using the
mobile communication network, and

wherein the information indicating that at least one
WLAN is identified is distinct from the one or more
user interface items.

23. The non-transitory computer storage medium of claim
17, wherein the video communication is performed using the
mobile communication network until the video communi-
cation is performed using the selected WLAN.

24. The non-transitory computer storage medium of claim
17, wherein the instructions cause the processor to control to
determine whether any of the identified one or more WLANs

15

is previously accessed by controlling to determine whether information regarding an access point (AP) of a corresponding WLAN is included in the access information.

25. An electronic device for performing video communication, the electronic device comprising:

a memory storing instructions; and

a processor configured to execute the stored instructions to at least:

control to perform the video communication with an external device using a mobile communication network by sending video communication data towards the external device through a mobile communication interface of the electronic device and by receiving video communication data originating from the external device through the mobile communication interface of the electronic device, wherein video communication data sent towards the external device includes image data obtained through a camera of the electronic device;

control to display a video image of the video communication being performed with the external device using the mobile communication network on a touch screen of the electronic device;

while displaying the video image of the video communication the mobile communication network for the video communication, control to:

identify one or more wireless local area networks (WLANs) available at a current location of the electronic device based on a signal received from each of the one or more WLANs,

display, on the touch screen, information indicating that at least one WLAN is identified,

display, on the touch screen based on the identifying of the one or more WLANs, one or more user interface items that respectively correspond to the identified one or more WLANs, wherein each of the displayed one or more user interface items allows for selecting a corresponding WLAN through which to perform the video communication with the external device, wherein each of the one or more user interface items includes signal strength information for the corresponding WLAN,

in response to receiving, through the touch screen, a first touch input for a user interface item of the displayed one or more user interface items, select a WLAN corresponding to the user interface item, and

in response to receiving, through the touch screen, a second touch input for connecting to the selected WLAN, initiate an operation to change a commu-

16

nication network for the video communication from the mobile communication network to the selected WLAN; and

control to perform, with the external device using a wireless connection to the selected WLAN to which the communication network for the video communication is changed from the mobile communication network, the video communication by sending video communication data towards the external device through a WLAN communication interface of the electronic device and by receiving video communication data originating from the external device through the WLAN communication interface of the electronic device, wherein video communication data sent towards the external device includes image data obtained through the camera of the electronic device,

wherein the information indicating that at least one WLAN is identified is distinct from the one or more user interface items.

26. The electronic device of claim **25**, wherein each of the displayed one or more user interface items further comprises at least one of type information or an alphanumeric identifier for a corresponding WLAN.

27. The electronic device of claim **25**, wherein, when a plurality of user interface items is displayed, the plurality of user interface items is consecutively displayed one below another.

28. The electronic device of claim **25**, wherein, while the user interface item corresponding to the WLAN is displayed, the selection of the WLAN is canceled based on an input being received.

29. The electronic device of claim **25**, wherein the second touch input comprises a touch input, received through the touch screen, for a connect option displayed on the touch screen.

30. The electronic device of claim **25**, wherein the processor is configured to execute the stored instructions further to:

while displaying the video image of the video communication being performed with the external device using the mobile communication network, control to display, on the touch screen, a user interface for obtaining information for connecting to the selected WLAN in response to receiving the second touch input; and control to connect to the selected WLAN, through which to send and receive video communication data, using the information obtained through the displayed user interface.

* * * * *