



US006438585B2

(12) **United States Patent**
Mousseau et al.

(10) **Patent No.:** **US 6,438,585 B2**
(45) **Date of Patent:** **Aug. 20, 2002**

(54) **SYSTEM AND METHOD FOR
REDIRECTING MESSAGE ATTACHMENTS
BETWEEN A HOST SYSTEM AND A
MOBILE DATA COMMUNICATION DEVICE**

5,487,100 A 1/1996 Kane
5,493,692 A * 2/1996 Theimer et al. 455/26.1

(List continued on next page.)

FOREIGN PATENT DOCUMENTS

(75) Inventors: **Gary P. Mousseau; Mihal Lazaridis,**
both of Waterloo (CA)
(73) Assignee: **Research In Motion Limited,** Waterloo
(CA)

AU 7843498 5/1997
EP 0617373 9/1994

(List continued on next page.)

OTHER PUBLICATIONS

(*) Notice: Subject to any disclaimer, the term of this patent is extended or adjusted under 35 U.S.C. 154(b) by 0 days.

Battery Friendly Bulletin, Winter 1999 Newsletter, Socket Communications, from www.socketcom.com/nlwint9.htm, pp. 1-8.*
Comerford, Handhelds duke it out for the Internet, Aug. 2000, IEEE Spectrum, pp. 35-41.*

(21) Appl. No.: **09/761,480**
(22) Filed: **Jan. 16, 2001**

(List continued on next page.)

Related U.S. Application Data

(63) Continuation-in-part of application No. 09/545,963, filed on Apr. 10, 2000, and a continuation-in-part of application No. 09/087,632, filed on May 29, 1998.
(51) Int. Cl.⁷ **G06F 15/16**
(52) U.S. Cl. **709/206; 709/207; 709/245; 340/7.21; 340/7.29; 340/7.51; 455/556**
(58) Field of Search **709/253, 206, 709/207, 245; 340/10.1, 7.29, 7.43, 7.21, 7.51-7.57; 455/555-557**

Primary Examiner—Dung C. Dinh
Assistant Examiner—Bradley Edelman
(74) *Attorney, Agent, or Firm*—Jones, Day, Reavis & Pogue; Krishna K. Pathiyal, Esq.; Charles B. Meyer, Esq.

(57) **ABSTRACT**

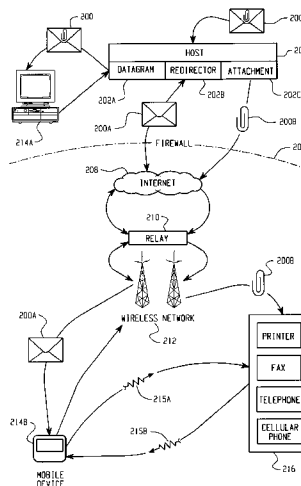
A system and method for pushing information from a host system to a mobile data communication device upon sensing a triggering event is disclosed. A redirector program operating at the host system enables a user to continuously redirect certain user-selected data items from the host system to the user's mobile data communication device upon detecting that one or more user-defined triggering events has occurred. The redirector program operates in connection with event generating applications and repackaging systems at the host system to configure and detect a particular user-defined event, and then to repackage the user-selected data items in an electronic wrapper prior to pushing the data items to the mobile device. The system includes attachment processing components for identifying one or more attachment displays in the vicinity of the mobile data communication device and then routing an attachment from the host system directly to a selected attachment display.

(56) **References Cited**

U.S. PATENT DOCUMENTS

5,086,502 A 2/1992 Malcolm
5,159,592 A 10/1992 Perkins
5,313,582 A 5/1994 Hendel et al.
5,392,390 A 2/1995 Crozier
5,410,543 A 4/1995 Seitz et al.
5,416,473 A 5/1995 Dulaney, III et al.
5,416,842 A 5/1995 Fleming, III
5,436,960 A 7/1995 Campana, Jr. et al.
5,438,011 A 8/1995 Campana, Jr. et al.
5,452,356 A 9/1995 Albert
5,479,472 A 12/1995 Campana, Jr. et al.

77 Claims, 9 Drawing Sheets



U.S. PATENT DOCUMENTS

5,495,484	A	2/1996	Self et al.	
5,572,528	A	11/1996	Shuen	
5,579,472	A	11/1996	Keyworth, II et al.	
5,588,009	A	12/1996	Will	
5,598,536	A	1/1997	Slaughter, III et al.	
5,603,054	A	2/1997	Theimer et al.	
5,604,788	A	2/1997	Tett	
5,625,670	A	4/1997	Campana, Jr. et al.	
5,627,829	A	5/1997	Gleeson et al.	
5,630,060	A	5/1997	Tang et al.	
5,633,810	A	5/1997	Mandal et al.	
5,638,450	A	6/1997	Robson	
5,641,946	A	6/1997	Campana, Jr. et al.	
5,666,530	A	9/1997	Clark et al.	
5,666,553	A	9/1997	Crozier	
5,673,322	A	9/1997	Pepe et al.	
5,706,211	A	1/1998	Beletic et al.	
5,727,202	A	3/1998	Kucala	
5,729,735	A	3/1998	Meyering	
5,737,531	A	4/1998	Ehley	
5,742,905	A	4/1998	Pepe et al.	
5,745,689	A	4/1998	Yeager et al.	
5,751,960	A	5/1998	Matsunaga	
5,751,971	A	5/1998	Dobbins et al.	
5,754,954	A	5/1998	Cannon et al.	
5,757,901	A	5/1998	Hiroshige	
5,761,416	A	6/1998	Mandal et al.	
5,764,639	A	6/1998	Staples et al.	
5,765,170	A	* 6/1998	Morikawa	707/200
5,781,614	A	7/1998	Brunson	
5,781,901	A	* 7/1998	Kuzuma	707/10
5,790,790	A	* 8/1998	Smith et al.	709/206
5,790,974	A	8/1998	Tognazzini	
5,812,819	A	9/1998	Rodwin et al.	
5,813,016	A	9/1998	Sumimoto	
5,819,172	A	10/1998	Campana, Jr. et al.	
5,819,284	A	10/1998	Farber et al.	
5,822,434	A	10/1998	Caronni et al.	
5,826,062	A	10/1998	Fake, Jr. et al.	
5,838,252	A	11/1998	Kikinis	
5,838,926	A	11/1998	Yamagishi	
5,844,969	A	12/1998	Goldman et al.	
5,850,219	A	12/1998	Kumomura	
5,867,660	A	2/1999	Schmidt et al.	
5,878,434	A	3/1999	Draper et al.	
5,889,845	A	3/1999	Staples et al.	
5,903,723	A	* 5/1999	Beck et al.	709/206
5,905,777	A	5/1999	Foladare et al.	
5,928,329	A	7/1999	Clark et al.	
5,937,161	A	8/1999	Mulligan et al.	
5,941,956	A	8/1999	Shirakihara et al.	
5,948,066	A	9/1999	Whalen et al.	
5,953,322	A	9/1999	Kimball	
5,961,590	A	10/1999	Mendez et al.	
5,964,833	A	10/1999	Kikinis	
5,973,612	A	10/1999	Deo et al.	
5,974,180	A	10/1999	Schwendeman	
5,974,238	A	10/1999	Chase, Jr.	
5,974,449	A	* 10/1999	Chang et al.	709/206
5,978,837	A	* 11/1999	Foladare et al.	709/207
5,983,073	A	11/1999	Ditzik	
5,987,508	A	11/1999	Agraharam et al.	
5,995,597	A	11/1999	Woltz et al.	
6,000,000	A	12/1999	Hawkins et al.	
6,006,274	A	12/1999	Hawkins et al.	
6,014,429	A	1/2000	LaPorta et al.	
6,018,762	A	1/2000	Brunson et al.	
6,023,700	A	2/2000	Owens et al.	
6,034,621	A	3/2000	Kaufman	
6,035,104	A	3/2000	Zahariev	
6,052,563	A	4/2000	Macko	
6,052,735	A	4/2000	Ulrich et al.	
6,058,431	A	5/2000	Srisuresh et al.	
6,073,165	A	6/2000	Narasimhan et al.	

6,084,969	A	7/2000	Wright et al.	
6,085,231	A	7/2000	Agraharam et al.	
6,085,232	A	* 7/2000	Kikinis	709/206
6,091,951	A	7/2000	Sturniolo et al.	
6,092,114	A	* 7/2000	Shaffer et al.	709/232
6,092,191	A	7/2000	Shimbo et al.	
6,101,531	A	8/2000	Eggleston et al.	
6,115,394	A	9/2000	Balachandran et al.	
6,115,736	A	9/2000	Devarakonda et al.	
6,125,281	A	9/2000	Wells et al.	
6,125,369	A	9/2000	Wu et al.	
6,128,739	A	10/2000	Fleming, III	
6,130,892	A	10/2000	Short et al.	
6,134,432	A	10/2000	Holmes et al.	
6,138,146	A	10/2000	Moon et al.	
6,141,690	A	10/2000	Wieman	
6,144,671	A	11/2000	Perinpanathan et al.	
6,154,839	A	11/2000	Arrow et al.	
6,157,950	A	12/2000	Krishman	
6,161,140	A	* 12/2000	Moriya	709/228
6,163,274	A	12/2000	Lldngren	
6,167,379	A	12/2000	Dean et al.	
6,185,603	B1	2/2001	Henderson et al.	
6,240,088	B1	* 5/2001	Gayton et al.	370/389
6,249,820	B1	6/2001	Dobbins et al.	
6,256,666	B1	* 7/2001	Singhal	709/217
6,272,545	B1	8/2001	Flanagin et al.	
6,275,848	B1	* 8/2001	Arnold	709/206
6,275,850	B1	* 8/2001	Beyda et al.	709/206
2001/0029531	A1	* 10/2001	Ohta	709/223
2001/0040693	A1	11/2001	Saito et al.	
2001/0042093	A1	11/2001	Shirai et al.	
2001/0054072	A1	12/2001	Discolo et al.	

FOREIGN PATENT DOCUMENTS

EP	0736989	10/1996
EP	0772327	5/1997
EP	0777394	6/1997
EP	0788287	6/1997
EP	09214556	8/1997
EP	0793387	9/1997
EP	0825788	2/1998
EP	0838774	4/1998
EP	0838934	4/1998
EP	0772327	2/1999
EP	0930766	7/1999
JP	11289346	10/1999
US	0001552	5/2001
WO	9619064	6/1996
WO	9726709	7/1997
WO	9727717	7/1997
WO	9732251	9/1997
WO	9733421	9/1997
WO	9741654	11/1997
WO	9744942	11/1997
WO	9800787	1/1998
WO	9821911	5/1998
WO	9823108	5/1998
WO	9848560	10/1998
WO	9917505	4/1999
WO	9945484	9/1999
WO	9963709	12/1999

OTHER PUBLICATIONS

Infrared Data Association Conference, San Francisco, Calif., Jan. 13, 2000, Extended Systems and Motorola Bring Short-range Wireless to the Paging E-volution, from wysiwyg://12/http://www.extendedsystems . . . +Events/PressDetail.htm?newsID=20000113.*
Wireless Symposium/Portable By Design, San Jose, Calif., Feb. 22, 2000, 3Com Corporation Licenses Bluetooth Technology from Extended Systems, from wysiwyg://19/http://www.extendedsystems . . . +Events/PressDetail.htm?newsID=20000222.*

- Hawaleshka, The Web in your pocket, May 15, 2000, Mcleans's, vol. 113, Issue 20, pp. 47-48.*
- Research In Motion, BlackBerry Technical White Paper, Version 1.0, 1999, from www.blackberry.net, pp. 1-15.*
- News Release, "Motorola Rings in 1995 with the Launch of the Marco® Wireless Communicator," Jan. 4, 1995 (4 pgs.).
- Timeline, "FLEX™ Technology Timeline," (3 pgs.).
- General Magic, Inc., Corporate Backgrounder, 2001 (2 pgs.).
- Pegasus Email Settings, ABSnet Internet Services, Inc. (4 pgs.).
- Motorola, Inc., emailVClient, 2001 (4 pages).
- News Release, "Motorola Announces Pagewriter 250, The World's Smallest Pager with Full Keyboard", Feb. 27, 1997 (2 pgs.).
- Dewey, Barney, "Communications Strategies for Newton 2.0," Newton Technology Journal, p. 10, Jun. 1996.
- Press Release, "Motorola Announces New Solutions to Provide Consumers with Wireless Access to Personal and Enterprise E-mail Accounts," Mar. 21, 2001 (4 pgs.).
- "Motorola's 'Marco' Wireless Communicator," <http://www.msu.edu/~luckie/gallery/marco.htm>, Jun. 14, 2001 (3 pgs.).
- News Release, "CE Software Announces MobileVision," Editorial Contacts, CE Software, Inc., 1995 (3 pgs.).
- News Release, "CE Software Ships MobileVision," Jun. 20, 1995 (3 pgs.).
- Newton Reference, Communications, 1996-1997 (4 pgs.).
- PC Pro Issue 31: Realworld Computing, PDA Column, Jul. 30, 1997 (7 pgs.).
- Enterprise Solutions for Email Overload, Founder Publications, <http://www.amikanow.com/corporte/publications.htm>, Aug. 6, 2001 (9 pgs.).
- "Motorola's 'Marco' Wireless Communicator," <http://www.msu.edu/~luckie/gallery/marco.htm>, Aug. 6, 2001 (2 pgs.).
- Press Release, "Apple Agrees to License Newton Technology to Schlumberger, Digital Ocean," Nov. 3, 1995 (3 pgs.).
- Frezza, Bill, "PDA, PDA, Wherefore Art Thou, PDA?", Freewire, Aug. 6, 2001 (6 pgs.).
- Black, Lauren, et al., "Personal Digital Assistants," Macworld Reviews, Aug. 6, 2001 (5 pgs.).
- Reference, "MobileVision Direct Wireless Connection to Your LAN-Based Electronic Mailbox," CE Software, Inc., pp. 1, 3, 5, 7, 9, 11, 13, 15, 17, 19, 21, 1995.
- User Manual, "MobileVision Direct Wireless Connection to Your LAN-Based Electronic Mailbox," CE Software, Inc. 1995.
- Johnson, David B., "Ubiquitous Mobile Host Internetworking," Fourth Workshop on Workstation Operating Systems, pp. 85-90, Oct. 14-15, 1993.
- Johnson, David B., "Mobile Host Internetworking Using IP Loose Source Routing," School of Computer Science, Carnegie Mellon University, pp. 1-14 Feb. 1993.
- Schoettle, Bob, "IP-Address Management on LANs," Byte, pp. 199-200, Feb. 1996.
- Cheshire, Stuart, et al., "Internet Mobility 4 x 4," Computer Science Department, Stanford University, pp. 1-12, Aug. 1996.
- Yeom, Hoen Y., et al., "IP Multiplexing by Transparent Port-Address Translator," Proceedings of the Tenth USENIX System Administration Conference, pp. 113-122, Sep. 29- Oct. 4, 1996.
- Johnson, David B., "Scalable and Robust Internetwork Routing for Mobile Hosts," IEEE Computer Society, pp. 2-11, 1994.
- Perkins, Charles, "IMHP: A Mobile Host Protocol for the Internet," Computer Networks and ISDN System, vol. 27, pp. 479-491, 1994.
- Proceedings of the IEEE 7th International Workshop on Network and Operating System Support for Digital Audio and Video, Innsbrook Estates Conference Center, May 19-21, 1997, pp. 135-146.
- Lucent Technologies, Bell Labs Technical Journal, vol. 2, No. 3, pp. 152-163, Summer 1997.
- Lavana, Hemang, et al., Internet-Based Workflows: A Paradigm for Dynamically Reconfigurable Desktop Environments, Group 97, pp. 204-213, 1997.
- Perkins, Charles E., et al., "Mobility Support in IPv6," Mobicom 96, pp. 27-37, 1996.
- Goldschmidt, German, et al., "ShockAbsorber: A TCP Connection Router," IEEE, vol. 3, pp. 1919-1923, 1997.
- Egevang, K. et al., "The IP Network Address Translator," Network Working Group, pp. 1-10, May 1994.
- Manual, "Server and BBS Software for the Packet Radio" by Jean Paul Roubelat, pp. 1-173.
- Book, "Internetwork Mobility The CDPD Approach," by Mark S. Taylor, William Waung, and Mohsen Banan, Jun. 11, 1996.
- Briere, Daniel, et al., "One Mailbox, Just Like Old Times," Network World, vol. 14, issue 16, p. 21 (Apr. 21, 1997).
- Feibus, "A Desktop in Your Palm", Informationweek, Aug. 25, 1997, pp. 65ff.
- Behr, "Handheld Solutions", Informationweek, Oct. 27, 1997, pp. 106-113.
- Moody's Investors Service, Socket Communications Inc.—History & Debt, Investex Report No. 3240276
- Newsletter, E-Mail Merges With Voice Through Infinite Technologies, Voice Technology & Services News, May 26, 1998.
- Newsletter, VODAPAGE: Vodapage demos increasing convergence of pagers and mobile communications at TMA 29, M2 Presswire, Nov. 28, 1996.
- Mosher, Microsoft Exchange User's Handbook, Duke Press, 1997, pp. 547-549.
- Copy of DTS Wireless Website located at D.R.L. <http://www.dtswireless.com>.
- "3Com PalmPilot Gets Wireless Link for E-Mail", Spooner, John G., PC Week, Dec. 8, 1997.
- "Have Your Pager Call My Pager", Sullivan, Kristina B., PC Week, Dec. 8, 1997.
- "BlackBerry Technical White Paper," Research in Motion Ltd., Version 1.0, 1998-1999.
- Newsletter, "Battery Friendly Bulletin," vol. 1, Issue 3, pp. 1-7 and unnumbered page, 1999.
- Article, Comerford, "Handhelds Duke It Out for the Internet," Wireless Internet, pp. 35-38 and 41, Aug. 2000.
- Press Detail, "Extended Systems and Motorola Bring Short-Range Wireless to the Paging E-volution," Jan. 13, 2000 (3 pages).
- Press Detail, "3Com Corporation Licenses Bluetooth Technology from Extended Systems," Feb. 22, 2000 (2 pages).
- Web site Article, Hawaleshka, "The Web in Your Pocket," Maclean's, May 15, 2000 (3 pages).
- Claxton, "Messaging API's for Voice Networks," Telecommunications, pp. 116-120, 1998.

* cited by examiner

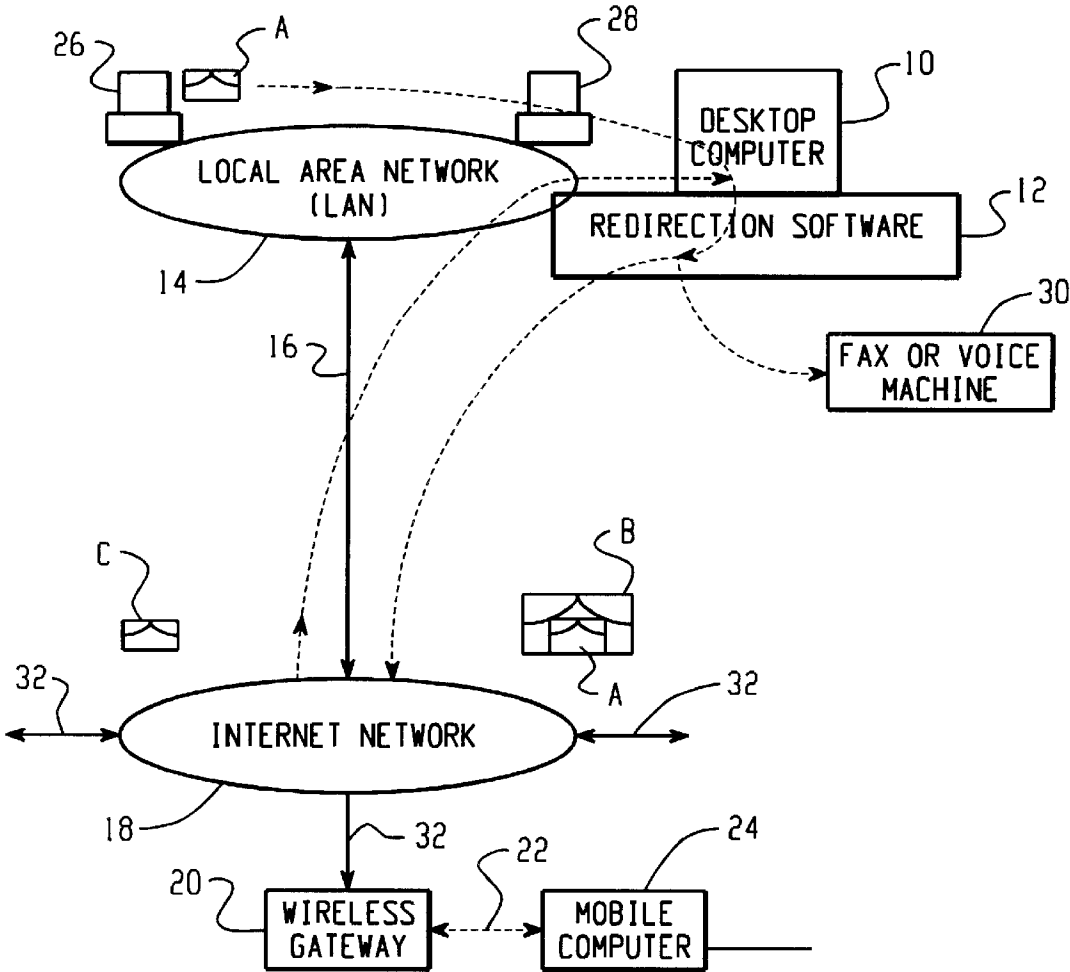


Fig. 1

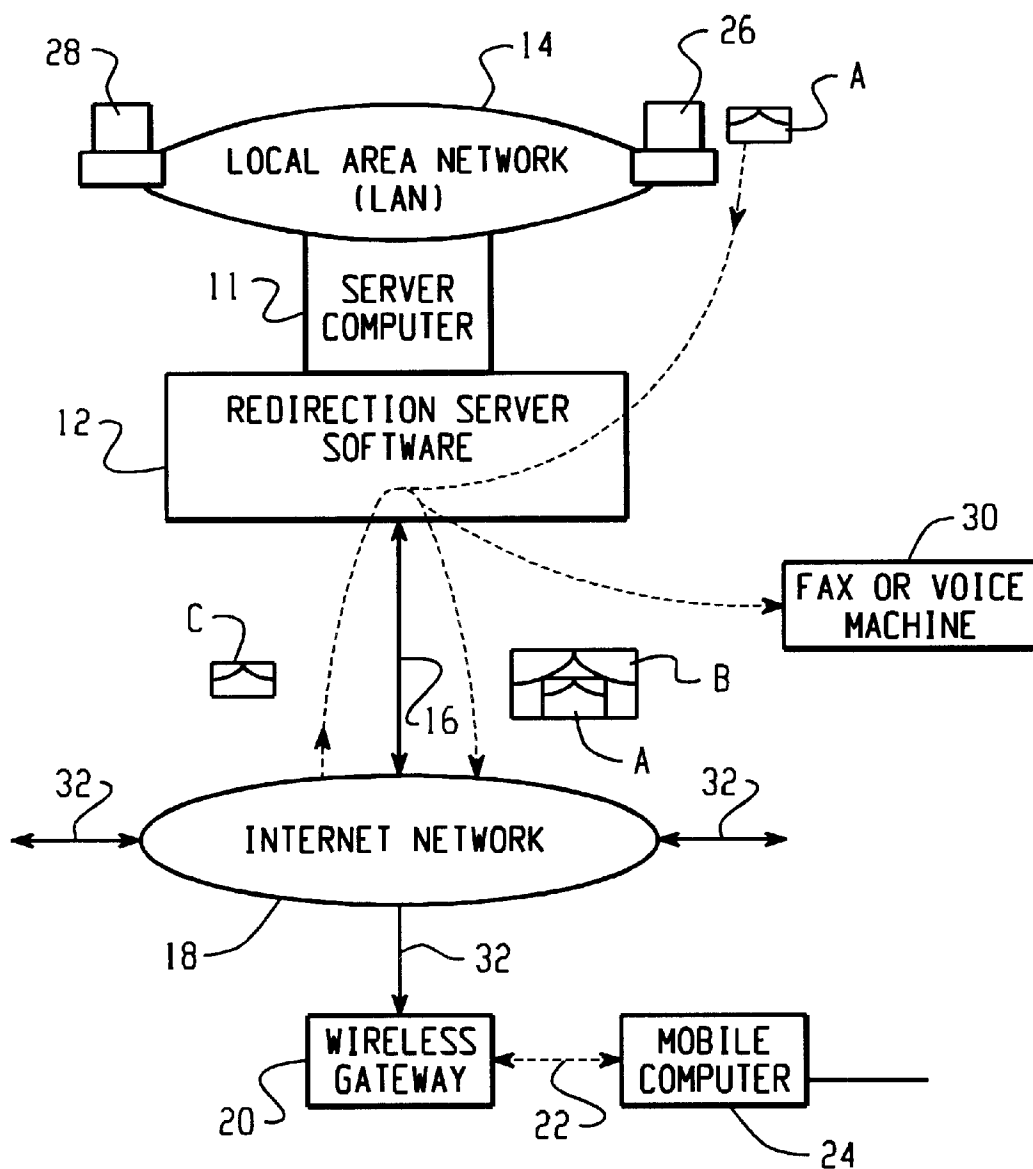
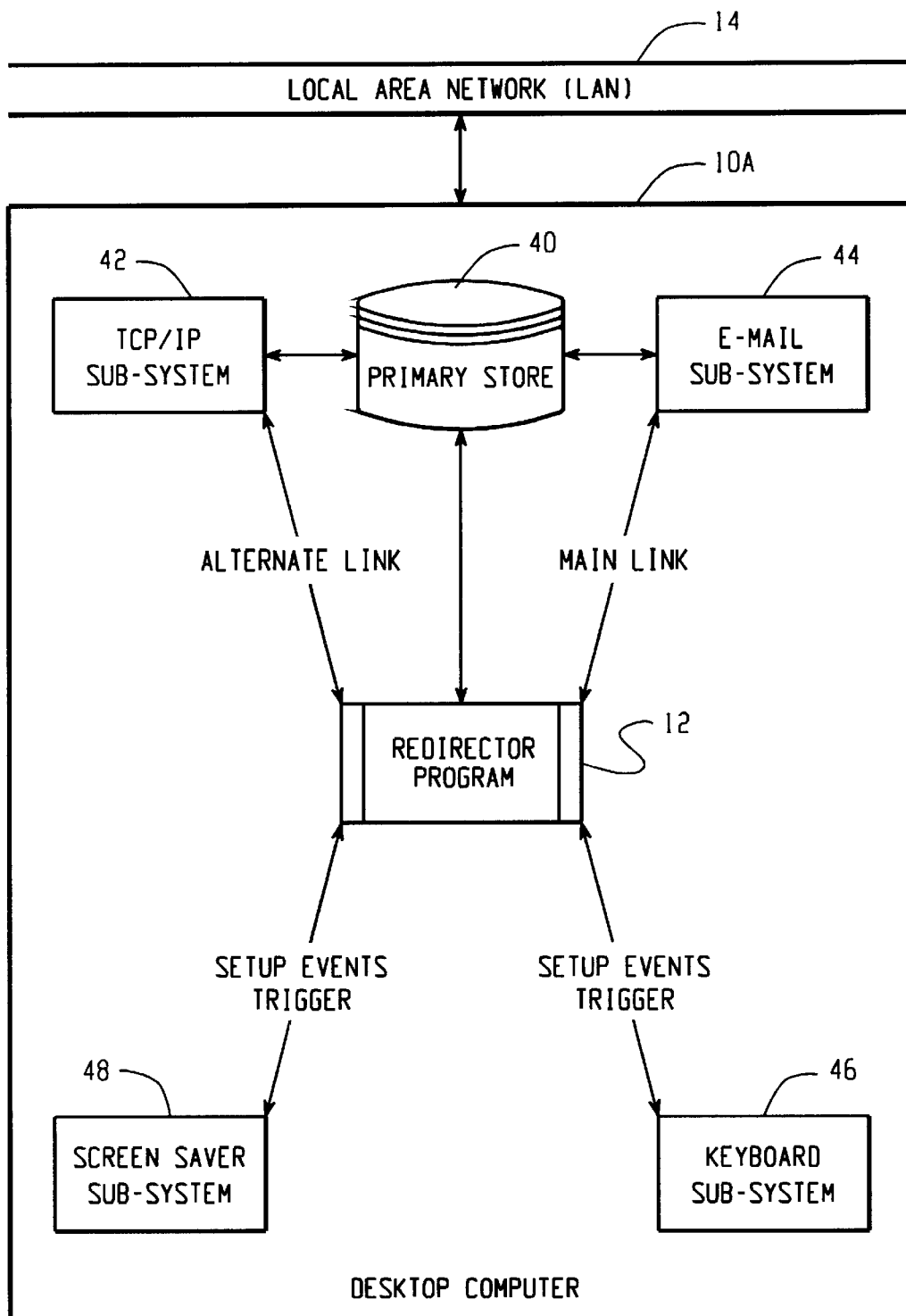


Fig. 2

*Fig. 3*

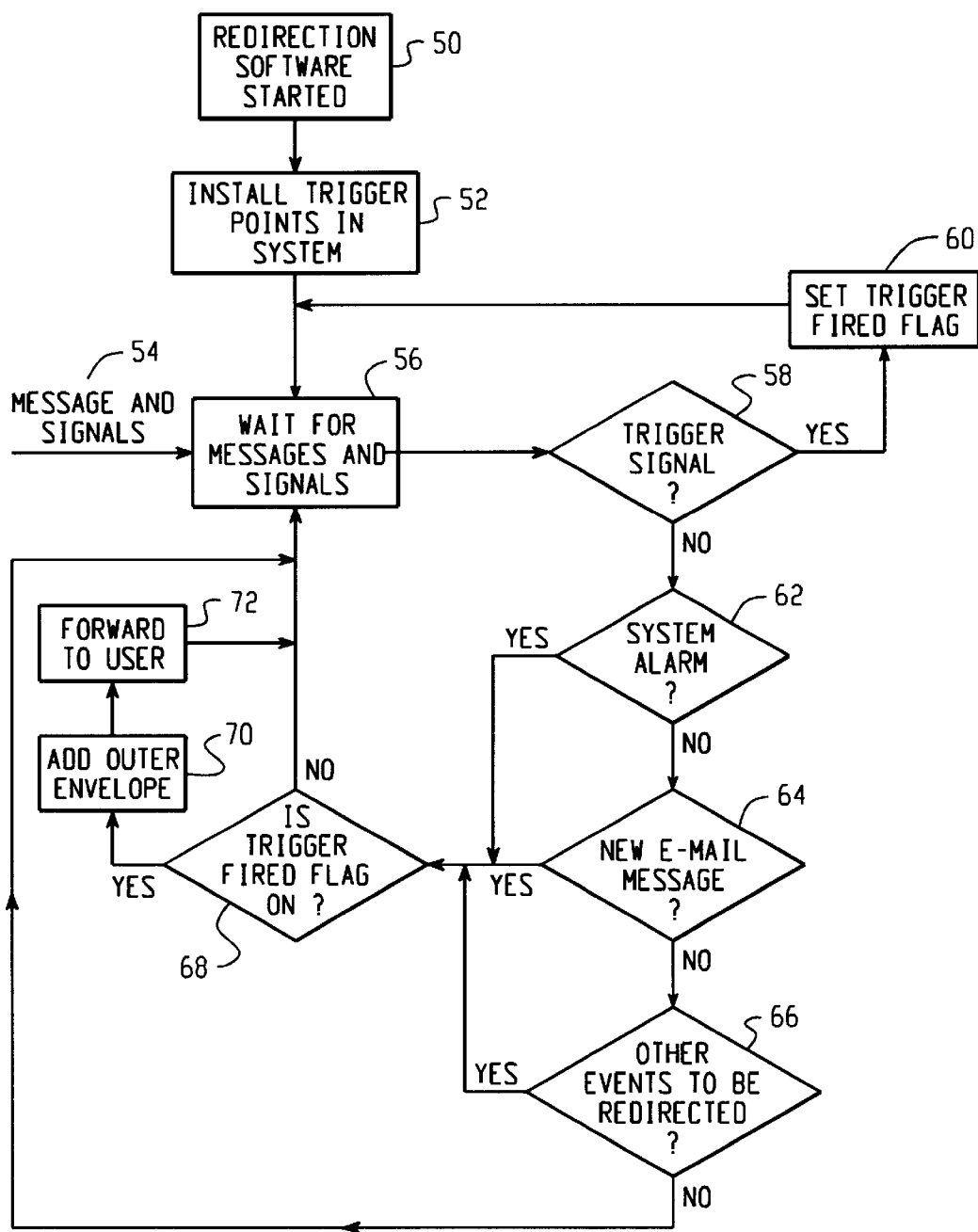


Fig. 4

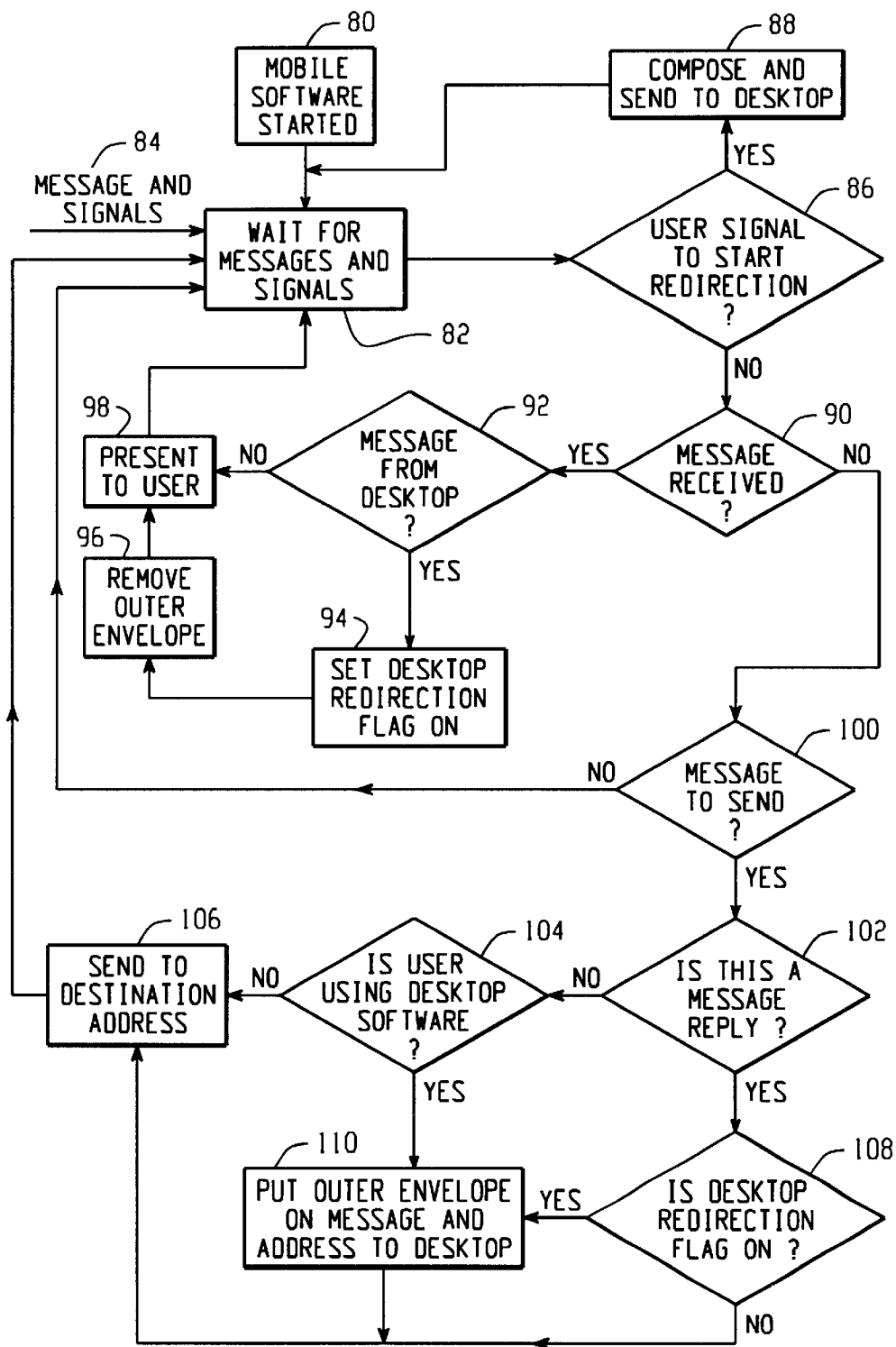


Fig. 5

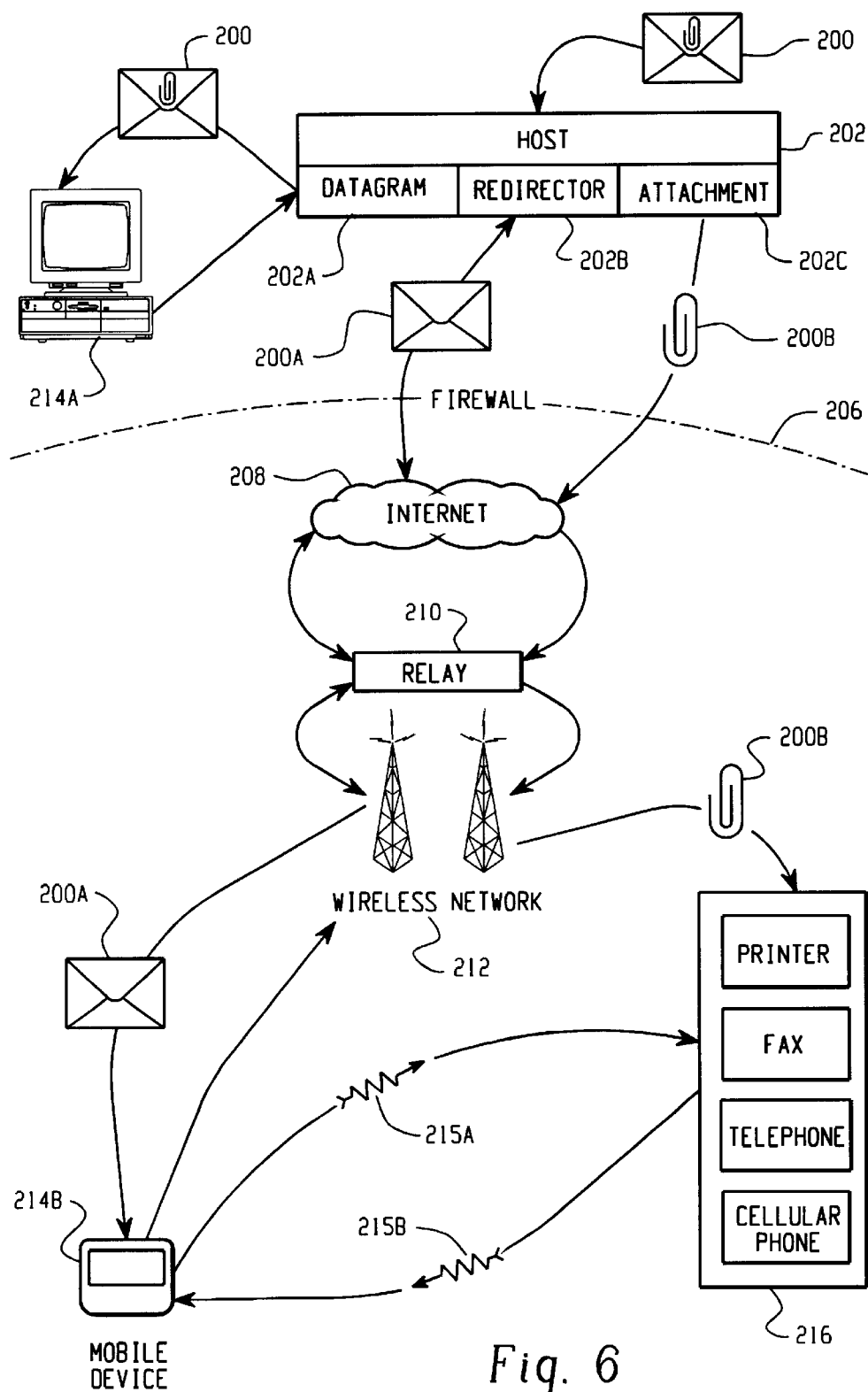


Fig. 6

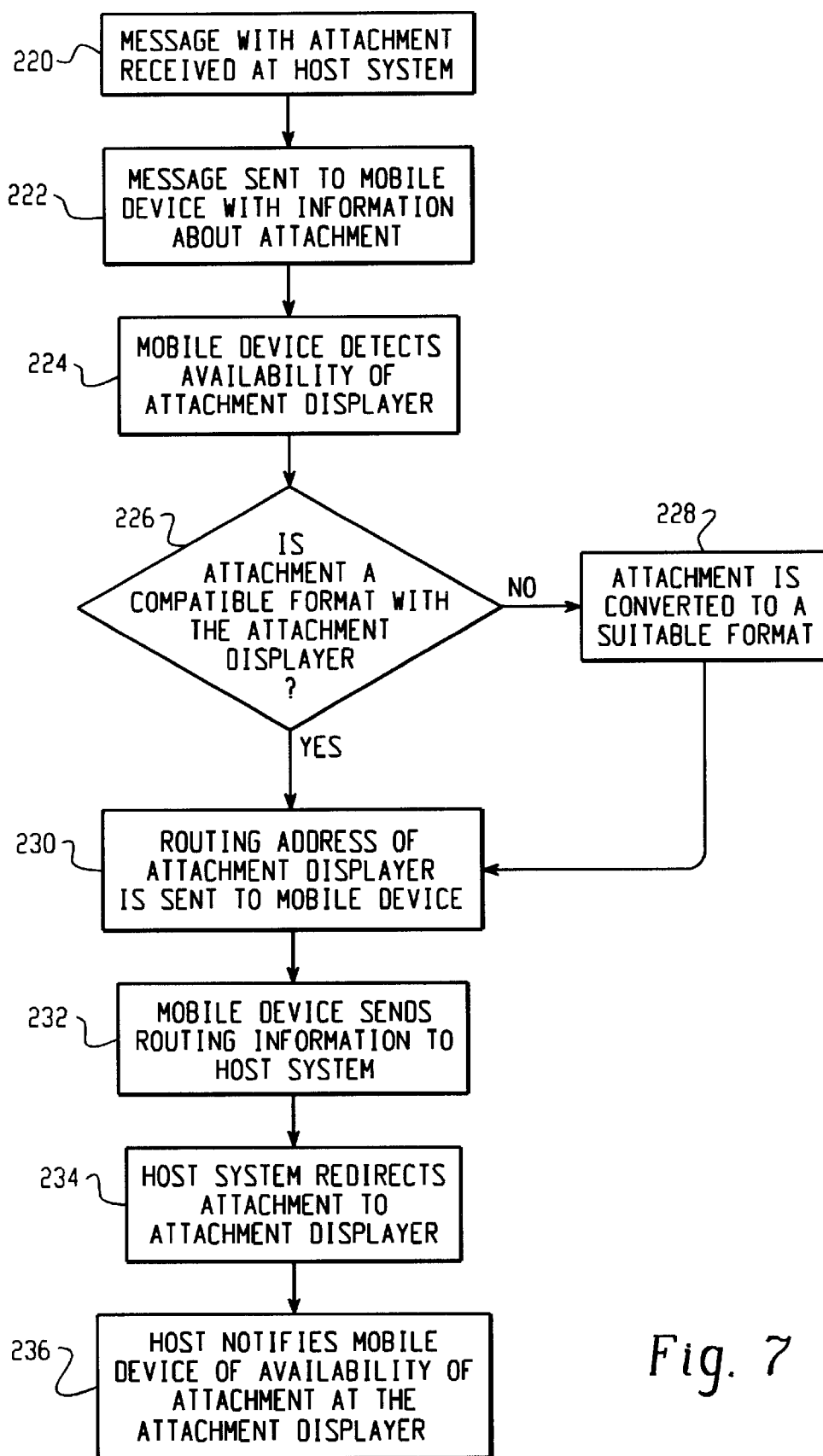


Fig. 7

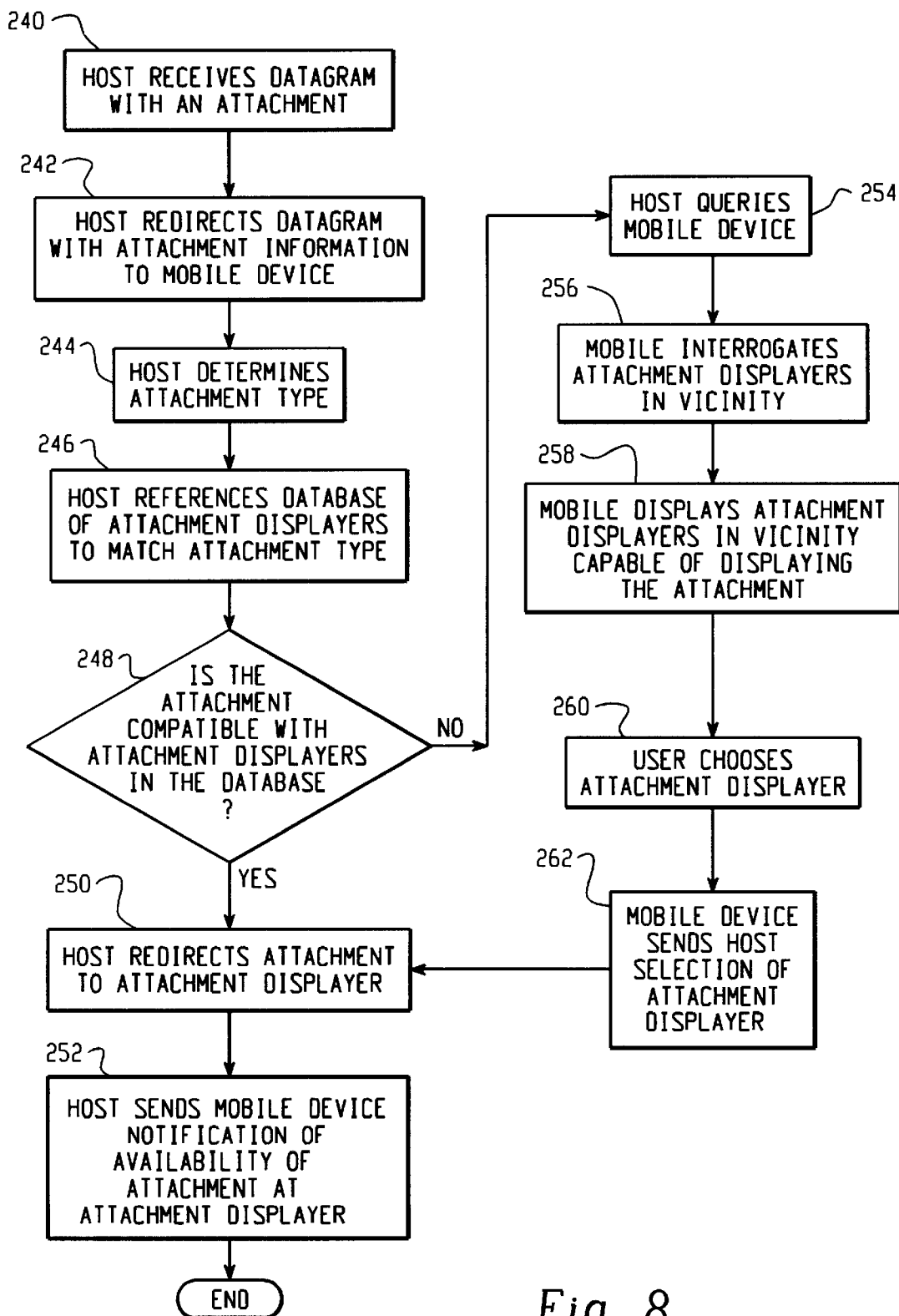
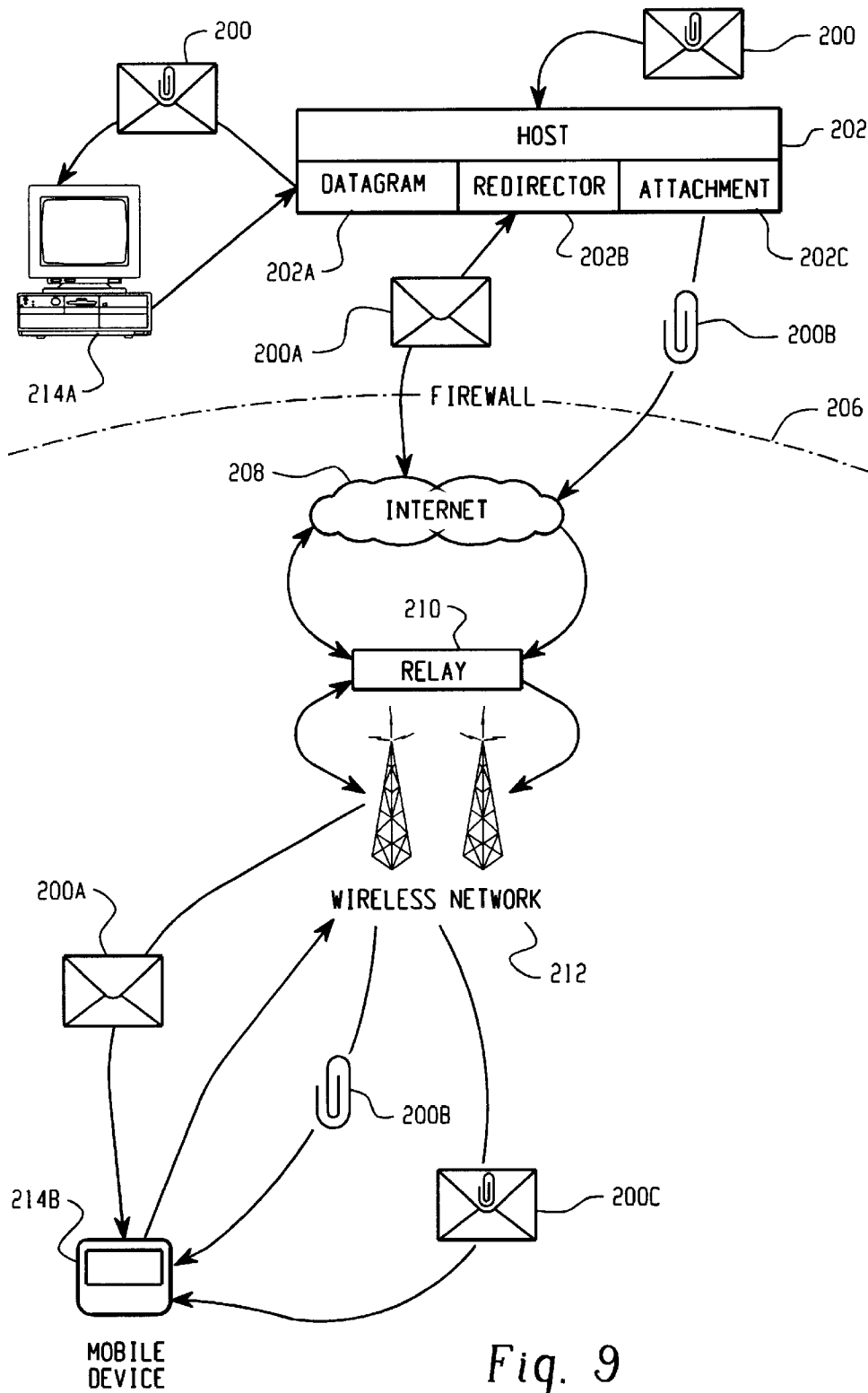


Fig. 8



1

SYSTEM AND METHOD FOR REDIRECTING MESSAGE ATTACHMENTS BETWEEN A HOST SYSTEM AND A MOBILE DATA COMMUNICATION DEVICE

CROSS-REFERENCE TO RELATED APPLICATIONS

This application is a continuation-in-part of U.S. patent application Ser. No. 09/087,632, titled "System and Method for Pushing Information from a Host System to a Mobile Data Communication Device," filed on May 29, 1998, and U.S. patent application Ser. No. 09/545,963 filed on Apr. 10, 2000. This application is also related to the following co-pending, and commonly-owned, United States patent applications, all of which are related to Ser. No. 09/087,632, U.S. patent applications Ser. No. 09/401,868, Ser. No. 09/528,495, Ser. No. 09/545,962, and Ser. No. 09/649,755, all of which are hereby incorporated into the present application by reference.

BACKGROUND

1. Field of the Invention

The present invention is directed toward the field of replicating and redirecting information from a host system where the information is normally stored to a mobile data communication device. In particular, the system and method of the present invention provide an event-driven redirection computer program ("redirector program") operating at the host system, which, upon sensing a particular user-defined event has occurred, redirects user-selected data items from the host system to the user's mobile data communication device. Upon sensing a second user-defined event has occurred, the redirector program may discontinue redirecting information. The mobile data communication device is preferably coupled to the host system via a wireless network and one or more landline networks. Due to the bandwidth limitations of wireless networks, only a portion of a user-selected data item is generally redirected to the user's mobile device, with the user given the option of then retrieving the entire data item (or some other portion of the data item) from the host system.

The invention also provides a system and method for redirecting message attachments between the host system and the mobile data communication device. This system and method are particularly useful for mobile devices, such as pagers, PDAs, cellular telephones, etc., that have limited memory capacity and thus may have difficulty processing attachment files.

2. Description of the Related Art

Present systems and methods for replicating (or redirecting) information from a host system to a user's mobile data communication device are typically "synchronization" systems in which the user's data items are warehoused (or stored) at the host system for an indefinite period of time and then transmitted in bulk to the mobile device only in response to a user request. In these types of systems and methods, when replication of the warehoused data items to the mobile device is desired, the user typically places the mobile device in an interface cradle that is electrically connected to the host system via some form of local, dedicated communication. Software executing on the mobile device then transmits commands via the local communications link to the host system to cause the host to begin transmitting the user's data items for storage in a memory bank of the mobile device.

In these known synchronization schemes, the mobile unit "pulls" the warehoused information from the host system in

2

a batch each time the user desires to replicate information between the two devices. Therefore, the two systems (host and mobile) only maintain the same data items after a user-initiated command sequence that causes the mobile device to download the data items from the host system. A general problem with these synchronization systems is that the only time that the user data items are replicated between the host system and the mobile data communication device is when the user commands the mobile device to download or pull the user data from the host system. Five minutes later a new message could be sent to the user, but the user would not receive that message until the next time the user fetches the user data items. Thus, a user may fail to respond to an emergency update or message because the user only periodically synchronizes the system, such as once per day. Other problems with these systems include: (1) the amount of data to be reconciled between the host and the mobile device can become large if the user does not "synchronize" on a daily or hourly basis, leading to bandwidth difficulties, particularly when the mobile device is communicating via a wireless packet-switched network; and (2) reconciling large amounts of data, as can accrue in these batch-mode synchronization systems, can require a great deal of communication between the host and the mobile device, thus leading to a more complex, costly and energy-inefficient system.

A more automated, continuous, efficient and reliable system of ensuring that user data items are replicated at the user's mobile device is therefore needed.

There remains an additional need for such a system and method that provides flexibility in the types and quantities of user data items that are pushed from the host system to the mobile data communication device and that also provides flexibility in the configuration and types of events that can serve to trigger the redirection of the user data items.

There remains yet an additional need for such a system and method that can operate locally on a user's desktop PC or at a distance via a network server.

There remains still another need for such a system and method that provides for secure, transparent delivery of the user-selected data items from the host system to the mobile device.

There remains an additional need for such a system and method in which the user is provided with a flexible means of processing message attachments that may be too large or incompatible with the configuration of the mobile device.

SUMMARY

The present invention overcomes the problems noted above and satisfies the needs in this field for a system and method of pushing user-selected data items from a host system to a user's mobile data communication device upon detecting the occurrence of one or more user-defined event triggers. As used in this application, the term host system refers to the computer where the redirector software is operating. In the preferred embodiment of the present invention, the host system is a user's desktop PC, although, alternatively, the host system could be a network server connected to the user's PC via a local-area network ("LAN"), or could be any other system that is in communication with the user's desktop PC.

A redirector program operating at the host system enables the user to redirect or mirror certain user-selected data items (or parts of data items) from the host system to the user's mobile data communication device upon detecting that one or more user-defined triggering events has occurred. (In this application the terms "information," "data items,"

“messages,” and “datagrams” are used interchangeably to mean an information object that is received at the host system and redirected to the mobile device.) Also operating at the host system are various sub-systems that can be configured to create triggering events, such as a screen saver sub-system or a keyboard sub-system, as well as sub-systems for repackaging the user’s data items for transparent delivery to the mobile data device, such as a TCP/IP sub-system or one or more E-Mail sub-systems. Other sub-systems for creating triggering events and repackaging the user’s data items could also be present at the host system. The host system also includes a primary memory store where the user’s data items are normally stored.

Using the redirector program, the user can select certain data items for redirection, such as E-mail messages, calendar events, meeting notifications, address entries, journal entries, personal reminders etc. Having selected the data items for redirection, the user can then configure one or more event triggers to be sensed by the redirector program to initiate redirection of the user data items. These user-defined trigger points (or event triggers) include external events, internal events and networked events. Examples of external events include: receiving a message from the user’s mobile data communication device to begin redirection; receiving a similar message from some external computer; sensing that the user is no longer in the vicinity of the host system; or any other event that is external to the host system. Internal events could be a calendar alarm, screen saver activation, keyboard timeout, programmable timer, or any other user-defined event that is internal to the host system. Networked events are user-defined messages that are transmitted to the host system from another computer coupled to the host system via a network to initiate redirection. These are just some of the examples of the types of user-defined events that can trigger the redirector program to push data items from the host to the mobile device. Although in the preferred embodiment it is anticipated that the configuration that specifies which data items will be redirected and in what form will be set at the host system, it is within the scope of this invention that such configuration may be set or modified through data sent from the mobile communications device.

In addition to the functionality noted above, the redirector program provides a set of software-implemented control functions for determining the type of mobile data communication device and its address, for programming a preferred list of message types that are to be redirected, and for determining whether the mobile device can receive and process certain types of message attachments, such as word processor or voice attachments. The determination of whether a particular mobile device can receive and process attachments is preferably initially configured by the user of that mobile device at the host system. This configuration can be altered on a global, per message basis or per device basis by transmitting a command message from the mobile device to the host system. If the redirector is configured so that the mobile data device cannot receive and process word processor or voice attachments, then the redirector routes these attachments to an external machine that is compatible with the particular attachment, such as an attached printer or networked fax machine or telephone. Other types of attachments could be redirected to other types of external machines in a similar fashion, depending upon the capabilities of the mobile device. For example, if a user is traveling and receives a message with an attachment that the user’s mobile device can process or display, the user may from a mobile communications device send a command message to the host system indicating that that attachment is to be sent

to a fax machine at a hotel where the user will be spending the evening. This enables the user to receive important E-mail attachments as long as the host system is provided with sufficient information about the destination where the attachment is to be forwarded.

Once an event has triggered redirection of the user data items, the host system then repackages these items in a manner that is transparent to the mobile data communication device, so that information on the mobile device appears similar to information on the user’s host system. The preferred repackaging method includes wrapping the user data items in an E-mail envelope that corresponds to the address of the mobile data communication device, although, alternatively, other repackaging methods could be used with the present invention, such as special-purpose TCP/IP wrapping techniques, or other methods of wrapping the user selected data items. The repackaging preferably results in E-mail messages generated by the user from the mobile device to be transmitted from the host system, thus enabling the user to appear to have a single E-mail address, such that the recipients of messages sent from the mobile communications device do not know where the user was physically located when the message was first sent. The repackaging also permits both messages to the mobile device and sent from the mobile device to be encrypted and decrypted as well as compressed and decompressed.

In an alternative system and method, the redirector program executes on a network server, and the server is programmed to detect numerous redirection event triggers over the network from multiple user desktop computers coupled to the server via a LAN. The server can receive internal event triggers from each of the user desktops via the network, and can also receive external event triggers, such as messages from the users’ mobile data communication devices. In response to receiving one of these triggers, the server redirects the user’s data items to the proper mobile data communication device. The user data items and addressing information for a particular mobile device can be stored at the server or at the user’s PC. Using this alternative configuration, one redirector program can serve a plurality of users. This alternative configuration could also include an internet- or intranet-based redirector program that could be accessible through a secure webpage or other user interface. The redirector program could be located on an Internet Service Provider’s system and accessible only through the Internet.

In another alternative configuration of the present invention, a redirector program operates at both the host system and at the user’s mobile data communication device. In this configuration, the user’s mobile device operates similarly to the host system described below, and is configured in a similar fashion to push certain user-selected data items from the mobile device to the user’s host system (or some other computer) upon detecting an event trigger at the mobile device. This configuration provides two-way pushing of information from the host to the mobile device and from the mobile device to the host.

The primary advantage of the present invention is that it provides a system and method for triggering the continuous and real-time redirection of user-selected data items from a host system to a mobile data communication device. Other advantages of the present invention include: (1) flexibility in defining the types of user data to redirect, and in defining a preferred list of message types that are to be redirected or preferred senders whose messages are to be redirected; (2) flexibility in configuring the system to respond to numerous internal, external and networked triggering events; (3) trans-

parent repackaging of the user data items in a variety of ways such that the mobile data communication device appears as though it were the host system; (4) integration with other host system components such as E-mail, TCP/IP, keyboard, screen saver, webpages and certain programs that can either create user data items or be configured to provide trigger points; (5) the ability to operate locally on a user's desktop system or at a distance via a network server; (6) the ability to receive, process, and manage attachment redirection; and (7) dynamically change and dynamically re-route attachment redirection.

These are just a few of the many advantages of the present invention, as described in more detail below. As will be appreciated, the invention is capable of other and different embodiments, and its several details are capable of modifications in various respects, all without departing from the spirit of the invention. Accordingly, the drawings and description of the preferred embodiments set forth below are to be regarded as illustrative in nature and not restrictive.

BRIEF DESCRIPTION OF THE DRAWINGS

The present invention satisfies the needs noted above as will become apparent from the following description when read in conjunction with the accompanying drawings wherein:

FIG. 1 is a system diagram showing the redirection of user data items from a user's desktop PC (host system) to the user's mobile data communication device, where the redirector software is operating at the user's desktop PC.

FIG. 2 is a system diagram showing the redirection of user data items from a network server (host system) to the user's mobile data communication device, where the redirector software is operating at the server.

FIG. 3 is a block diagram showing the interaction of the redirector software with other components of the host system in FIG. 1 (the user's desktop PC) to enable the pushing of information from the host system to the user's mobile data communication device.

FIG. 4 is a flow chart showing the steps carried out by the redirector software operating at the host system.

FIG. 5 is a flow chart showing the steps carried out by the mobile data communication device to interface with the redirector software operating at the host system.

FIG. 6 sets forth a system for redirecting messages having attachments between a host system and a mobile device.

FIG. 7 is a flow diagram setting forth a method of redirecting a message attachment to an attachment display that is identified by the mobile device.

FIG. 8 is a flow diagram setting forth a method of redirecting a message attachment to an attachment display that is identified by the host system.

FIG. 9 is alternative system configuration of FIG. 6.

DETAILED DESCRIPTION OF THE DRAWINGS

Referring now to the drawings, FIG. 1 is an example system diagram showing the redirection of user data items (such as message A or C) from a user's office PC (host system) 10 to the user's mobile data communication device 24, where the redirector software (program) 12 is operating at the user's PC. Message A in FIG. 1 represents an internal message sent from desktop 26 to the user's host system 10 via LAN 14. Message C in FIG. 1 represents an external message from a sender that is not directly connected to LAN 14, such as the user's mobile data communication device 24,

some other user's mobile device (not shown), or any user connected to the Internet 18. Message C also represents a command message from the user's mobile data communication device 24 to the host system 10. As described in more detail in FIG. 3, the host system 10 preferably includes, along with the typical hardware and software associated with a workstation or desktop computer, the redirector program 12, a TCP/IP sub-system 42, a primary message store 40, an E-mail sub-system 44, a screen saver sub-system 48, and a keyboard sub-system 46.

In FIG. 1, the host system 10 is the user's desktop system, typically located in the user's office. The host system 10 is connected to a LAN 14, which also connects to other computers 26, 28 that may be in the user's office or elsewhere. The LAN 14, in turn, is connected to a wide area network ("WAN") 18, preferably the Internet, which is defined by the use of the Transmission Control Protocol/Internet Protocol ("TCP/IP") to exchange information, but which, alternatively could be any other type of WAN. The connection of the LAN 14 to the WAN 18 is via high bandwidth link 16, typically a T1 or T3 connection. The WAN 18 in turn is connected to a variety of gateways 20, via connections 32. A gateway forms a connection or bridge between the WAN 18 and some other type of network, such as an RF wireless network, cellular network, satellite network, or other synchronous or asynchronous land-line connection.

In the example of FIG. 1, a wireless gateway 20 is connected to the Internet for communicating via wireless link 22 to a plurality of wireless mobile data communication devices 24. Also shown in FIG. 1 is machine 30, which could be a FAX machine, a printer, a system for displaying images (such as video), a cellular phone, or a machine capable of processing and playing audio files, such as a voice mail system. Machine 30 is also referred to herein as an attachment displayer. The present invention includes the ability to redirect certain message attachments to such an external machine 30 if the redirector program configuration data reflects that the mobile device 24 cannot receive and process the attachments, or if the user has specified that certain attachments are not to be forwarded to mobile device 24, even if such device can process those attachments.

For example, consider an E-mail sent to a user that includes three attachments—a word processing document, a video clip and an audio clip. The redirection program could be configured to send the text of the E-mail to the remote device, to send the word processing document to a networked printer located near the user, to send the video clip to a store accessible through a secure connection through the internet and to send the audio clip to the user's voice mail system. This example is not intended to limit the breadth and scope of the invention, but rather to illustrate the variety of possibilities embodied in the redirection concept. The attachment redirection capabilities of the present invention are further described below with reference to FIGS. 6–8.

The preferred mobile data communication device 24 is a hand-held two-way wireless paging computer, a wirelessly enabled palm-top computer, a mobile telephone with data messaging capabilities, or a wirelessly enabled laptop computer, but could, alternatively be other types of mobile data communication devices capable of sending and receiving messages via a network connection 22. Although it is preferable for the system to operate in a two-way communications mode, certain aspects of the invention could be beneficially used in a "one and one-half" or acknowledgment paging environment, or even with a one-way paging system. The mobile data communication device 24 includes

7

software program instructions that work in conjunction with the redirector program 12 to enable the seamless, transparent redirection of user-selected data items. FIG. 4 describes the basic method steps of the redirector program 12, and FIG. 5 describes the steps of the corresponding program operating at the mobile device 24.

In an alternative embodiment of the present invention, not explicitly shown in the drawings, the mobile device 24 also includes a redirector program. In this embodiment, user selected data items can be replicated from the host to the mobile device and vice versa. The configuration and operation of the mobile device 24 having a redirector program is similar to that described herein with respect to FIGS. 1-8.

A user of the present invention can configure the redirector program 12 to push certain user-selected data items to the user's mobile data communication device 24 when the redirector 12 detects that a particular user-defined event trigger (or trigger point) has taken place. When a secondary user-defined event trigger (or trigger point) occurs, which could be the same as the initial event trigger or could be a different event, the system may subsequently stop redirection. User-selected data items preferably include E-mail messages, calendar events, meeting notifications, address entries, journal entries, personal alerts, alarms, warnings, stock quotes, news bulletins, etc., but could, alternatively, include any other type of message that is transmitted to the host system 10, or that the host system 10 acquires through the use of intelligent agents, such as data that is received after the host system 10 initiates a search of a database or a website or a bulletin board. In some instances, only a portion of the data item is transmitted to the mobile device 24 in order to minimize the amount of data transmitted via the wireless network 22. In these instances, the mobile device 24 can optionally send a command message to the host system to receive more or all of the data item if the user desires to receive it.

User-defined event triggers that can be detected by the redirector program 12 in the preferred embodiment include external events, internal events and networked events. External events preferably include: (1) receiving a command message (such as message C) from the user's mobile data communication device to begin redirection, or to execute some other command at the host, such as a command to enable the preferred list mode, or to add or subtract a particular sender from the preferred list; (2) receiving a similar message from some external computer; and (3) sensing that the user is no longer in the vicinity of the host system; although, alternatively, an external event can be any other detectable occurrence that is external to the host system. Internal events could be a calendar alarm, screen saver activation, keyboard timeout, programmable timer, or any other user-defined event that is internal to the host system. Networked events are user-defined messages that are transmitted to the host system from another computer coupled to the host system via a network to initiate redirection. These are just some of the events that could be used with the present invention to initiate replication of the user-selected data items from the host system 10 to the mobile device 24.

FIG. 1 shows an E-mail message A being communicated over LAN 14 from computer 26 to the user's desktop system 10 (also shown in FIG. 1 is an external message C, which could be an E-mail message from an Internet user, or could be a command message from the user's mobile device 24). Once the message A (or C) reaches the primary message store of the host system 10, it can be detected and acted upon by the redirection software 12. The redirection software 12

8

can use many methods of detecting new messages. The preferred method of detecting new messages is using Microsoft's® Messaging API (MAPI), in which programs, such as the redirector program 12, register for notifications or 'advise syncs' when changes to a mailbox take place. Other methods of detecting new messages could also be used with the present invention.

Assuming that the redirector program 12 is activated, and has been configured by the user (either through the sensing of an internal, network or external event) to replicate certain user data items (including messages of type A or C) to the mobile device 24, when the message A is received at the host system 10, the redirector program 12 detects its presence and prepares the message for redirection to the mobile device 24. In preparing the message for redirection, the redirector program 12 could compress the original message A, could compress the message header, or could encrypt the entire message A to create a secure link to the mobile device 24.

Also programmed into the redirector 12 is the address of the user's mobile data communication device 24, the type of device, and whether the device 24 can accept certain types of attachments, such as word processing or voice attachments. If the user's type of mobile device cannot accept these types of attachments, then the redirector 12 can be programmed to route the attachments to a fax or voice number where the user is located using an attached fax or voice machine 30 or other type of attachment displayer.

The redirector may also be programmed with a preferred list mode that is configured by the user either at the host system 10, or remotely from the user's mobile data communication device by transmitting a command message C. The preferred list contains a list of senders (other users) whose messages are to be redirected or a list of message characteristics that determine whether a message is to be redirected. If activated, the preferred list mode causes the redirector program 12 to operate like a filter, only redirecting certain user data items based on whether the data item was sent from a sender on the preferred list or has certain message characteristics that if present will trigger or suppress redirection of the message. In the example of FIG. 1, if desktop system 26 was operated by a user on the preferred list of host system 10, and the preferred list option was activated, then message A would be redirected. If, however, desktop 26 was operated by a user not on the host system's preferred list, then message A would not be redirected, even if the user of the host system had configured the redirector to push messages of type A. The user of the host system 10 can configure the preferred list directly from the desktop system, or, alternatively, the user can then send a command message (such as C) from the mobile device 24 to the desktop system 10 to activate the preferred list mode, or to add or delete certain senders or message characteristics from the preferred list that was previously configured. It should be appreciated that a redirection program could combine message characteristics and preferred sender lists to result in a more finely-tuned filter. Messages marked as low priority or that are simple return receipts or message read receipts, for example, could always be suppressed from redirection while messages from a particular sender would always be redirected.

After the redirector has determined that a particular message should be redirected, and it has prepared the message for redirection, the redirector software 12 then sends the message A to a secondary memory store located in the mobile device 24, using whatever means are necessary. In the preferred embodiment this method is to send the message A back over the LAN 14, WAN 18, and through the

wireless gateway **20** to the mobile data communication device **24**. In doing so, the redirector preferably repackages message **A** as an E-mail with an outer envelope **B** that contains the addressing information of the mobile device **24**, although alternative repackaging techniques and protocols could be used, such as a TCP/IP repackaging and delivery method (most commonly used in the alternative server configuration shown in FIG. 2). The wireless gateway **20** requires this outer envelope information **B** in order to know where to send the redirected message **A**. Once the message (**A** in **B**) is received by the mobile device **24**, the outer envelope **B** is removed and the original message **A** is placed in the secondary memory store within the mobile device **24**. By repackaging and removing the outer envelope in this manner, the present invention causes the mobile computer **24** to appear to be at the same physical location as the host system **10**, thus creating a transparent system.

In the case where message **C** is representative of an external message from a computer on the Internet **18** to the host system **10**, and the host **10** has been configured to redirect messages of type **C**, then in a similar manner to message **A**, message **C** would be repackaged with an outer envelope **B** and transmitted to the user's mobile device **24**. In the case where message **C** is representative of a command message from the user's mobile device **24** to the host system **10**, the command message **C** is not redirected, but is acted upon by the host system **10**.

If the redirected user data item is an E-mail message, as described above, the user at the mobile device **24** sees the original subject, sender's address, destination address, carbon copy and blind carbon copy. When the user replies to this message, or when the user authors a new message, the software operating at the mobile device **24** adds a similar outer envelope to the reply message (or the new message) to cause the message to be routed first to the user's host system **10**, which then removes the outer envelope and redirects the message to the final destination, such as back to computer **26**. In the preferred embodiment, this results in the outgoing redirected message from the user's host system **10** being sent using the E-mail address of the host mailbox, rather than the address of the mobile device, so that it appears to the recipient of the message that the message originated from the user's desktop system **10** rather than the mobile data communication device. Any replies to the redirected message will then be sent to the desktop system **10**, which if it is still in redirector mode, will repackage the reply and re-send it to the user's mobile data device, as described above.

FIG. 2 is an alternative system diagram showing the redirection of user data items from a network server **11** to the user's mobile data communication device **24**, where the redirector software **12** is operating at the server **11**. This configuration is particularly advantageous for use with message servers such as Microsoft's® Exchange Server, which is normally operated so that all user messages are kept in one central location or mailbox store on the server instead of in a store within each user's desktop PC. This configuration has the additional advantage of allowing a single system administrator to configure and keep track of all users having messages redirected. If the system includes encryption keys, these too can be kept at one place for management and update purposes.

In this alternative configuration, server **11** preferably maintains a user profile for each user's desktop system **10**, **26**, **28**, including information such as whether a particular user can have data items redirected, which types of message and information to redirect, how to process various types of

message attachments, what events will trigger redirection, the address of the users' mobile data communication device **24**, the type of mobile device, and the user's preferred list, if any. The event triggers are preferably detected at the user's desktop system **10**, **26**, **28** and can be any of the external, internal or network events listed above. The desktop systems **10**, **26**, **28** preferably detect these events and then transmit a message to the server computer **11** via LAN **14** to initiate redirection, or to subsequent halt redirection. Although the user data items are preferably stored at the server computer **11** in this embodiment, they could, alternatively, be stored at each user's desktop system **10**, **26**, **28**, which would then transmit them to the server computer **11** after an event has triggered redirection.

As shown in FIG. 2, desktop system **26** generates a message **A** that is transmitted to and stored at the host system **11**, which is the network server operating the redirector program **12**. The message **A** is for desktop system **10**, but in this embodiment, user messages are stored at the network server **11**. When an event occurs at desktop system **10**, an event trigger is generated and transmitted to the network server **11**, which then determines who the trigger is from, whether that desktop has redirection capabilities, and if so, the server (operating the redirector program) uses the stored configuration information to redirect message **A** to the mobile computer **24** associated with the user of desktop system **10**.

As described above with reference to FIG. 1, message **C** could be either a command message from a user's mobile data communication device **24**, or it could be a message from an external computer, such as a computer connected to the Internet **18**. If the message **C** is from an Internet computer to the user's desktop system **10**, and the user has redirection capabilities, then the server **11** detects the message **C**, repackages it using electronic envelope **B**, and redirects the repackaged message (**C** in **B**) to the user's mobile device **24**. If the message **C** is a command message from the user's mobile device **24**, then the server **11** simply acts upon the command message.

Turning now to FIG. 3, a block diagram showing the interaction of the redirector software **12** with additional components of the host system **10** of FIG. 1 (the desktop PC) to enable more fully the pushing of information from the host system **10** to the user's mobile data communication device **24** is set forth. These additional components are illustrative of the type of event-generating systems that can be configured and used with the redirector software **12**, and of the type of repackaging systems that can be used to interface with the mobile communication device **24** to make it appear transparent to the user.

The desktop system **10** is connected to LAN **14**, and can send and receive data, messages, signals, event triggers, etc., to and from other systems connected to the LAN **14** and to external networks **18**, **22**, such as the Internet or a wireless data network, which are also coupled to the LAN **14**. In addition to the standard hardware, operating system, and application programs associated with a typical microcomputer or workstation, the desktop system **10** includes the redirector program **12**, a TCP/IP sub-system **42**, an E-mail sub-system **44**, a primary data storage device **40**, a screen saver sub-system **48**, and a keyboard sub-system **46**. The TCP/IP and E-mail sub-systems **42**, **44** are examples of repackaging systems that can be used to achieve the transparency of the present invention, and the screen saver and keyboard sub-systems **46**, **48** are examples of event generating systems that can be configured to generate event messages or signals that trigger redirection of the user selected data items.

The method steps carried out by the redirector program **12** are described in more detail in FIG. **4**. The basic functions of this program are: (1) configure and setup the user-defined event trigger points that will start redirection; (2) configure the types of user data items for redirection and optionally configure a preferred list of senders whose messages are to be redirected; (3) configure the type and capabilities of the user's mobile data communication device, including the configuration of attachment handling and type recognition; (4) receive messages and signals from the repackaging systems and the event generating systems; and (5) command and control the redirection of the user-selected data items to the mobile data communication device via the repackaging systems. Other functions not specifically enumerated could also be integrated into this program.

The E-Mail sub-system **44** is the preferred link to repackaging the user-selected data items for transmission to the mobile data communication device **24**, and preferably uses industry standard mail protocols, such as SMTP, POP, IMAP, MIME and RFC-822, to name but a few. The E-Mail sub-system **44** can receive messages A from external computers on the LAN **14**, or can receive messages C from some external network such as the Internet **18** or a wireless data communication network **22**, and stores these messages in the primary data store **40**. Assuming that the redirector **12** has been triggered to redirect messages of this type, the redirector detects the presence of any new messages and instructs the E-Mail system **44** to repackage the message by placing an outer wrapper B about the original message A (or C), and by providing the addressing information of the mobile data communication device **24** on the outer wrapper B. As noted above, this outer wrapper B is removed by the mobile device **24**, and the original message A (or C) is then recovered, thus making the mobile device **24** appear to be the desktop system **10**.

In addition, the E-Mail sub-system **44** receives messages back from the mobile device **24** having an outer wrapper with the addressing information of the desktop system **10**, and strips this information away so that the message can be routed to the proper sender of the original message A (or C). The E-Mail sub-system also receives command messages C from the mobile device **24** that are directed to the desktop system **10** to trigger redirection or to carry out some other function. The functionality of the E-Mail sub-system **44** is controlled by the redirector program **12**.

The TCP/IP sub-system **42** is an alternative repackaging system. It includes all of the functionality of the E-Mail sub-system **44**, but instead of repackaging the user-selected data items as standard E-mail messages, this system repackages the data items using special-purpose TCP/IP packaging techniques. This type of special-purpose sub-system is useful in situations where security and improved speed are important to the user. The provision of a special-purpose wrapper that can only be removed by special software on the mobile device **24** provides the added security, and the bypassing of E-mail store and forward systems can improve speed and real-time delivery.

As described previously, the present invention can be triggered to begin (or end) redirection upon detecting numerous external, internal and networked events, or trigger points. Examples of external events include: receiving a command message from the user's mobile data communication device **24** to begin redirection; receiving a similar message from some external computer; sensing that the user is no longer in the vicinity of the host system, such as by using the output of a digital camera, or by sensing the proximity of the user's mobile device using a wireless

connection; or any other event that is external to the host system. Internal events could be a calendar alarm, screen saver activation, keyboard timeout, programmable timer, or any other user-defined event that is internal to the host system. Networked events are user-defined messages that are transmitted to the host system from another computer (not the mobile device) that is connected to the host system via a network to initiate redirection.

The screen saver and keyboard sub-systems **46**, **48** are examples of systems that are capable of generating internal events. Functionally, the redirector program **12** provides the user with the ability to configure the screen saver and keyboard systems so that under certain conditions an event trigger will be generated that can be detected by the redirector **12** to start (or stop) the redirection process. For example, the screen saver system can be configured so that when the screen saver is activated, after, for example, **10** minutes of inactivity on the desktop system, an event trigger is transmitted to the redirector **12**, which starts redirecting the previously selected user data items. When the screen saver becomes activated, for whatever reason, a second event trigger is generated in order to halt redirection. In a similar manner the keyboard sub-system can be configured to generate event triggers when no key has been depressed for a particular period of time, thus indicating that redirection should commence, and then to subsequently generate another trigger when a key is depressed to stop redirection. These are just two examples of the numerous application programs and hardware systems internal to the host system **10** that can be used to generate internal event triggers.

FIGS. **4** and **5**, set forth, respectively, flow charts showing the steps carried out by the redirector software **12** operating at the host system **10**, and the steps carried out by the mobile data communication device **24** in order to interface with the host system. Turning first to FIG. **4**, at step **50**, the redirector program **12** is started and initially configured. The initial configuration of the redirector **12** includes: (1) defining the event triggers that the user has determined will trigger redirection; (2) selecting the user data items for redirection; (3) selecting the repackaging sub-system, either standard E-Mail, or special-purpose technique; (4) selecting the type of data communication device, indicating whether and what type of attachments the device is capable of receiving and processing, and inputting the address of the mobile device; and (5) configuring the preferred list of user selected senders whose messages are to be redirected.

FIG. **4** sets forth the basic steps of the redirector program **12** assuming it is operating at a desktop system **10**, such as shown in FIG. **1**. If the redirector **12** is operating at a network server **11**, as shown in FIG. **2**, then additional configuration steps may be necessary to enable redirection for a particular desktop system **10**, **26**, **28** connected to the server, including: (1) setting up a profile for the desktop system indicating its address, events that will trigger redirection, and the data items that are to be redirected upon detecting an event; (2) maintaining a storage area at the server for the data items; and (3) storing the type of data communication device to which the desktop system's data items are to be redirected, whether and what type of attachments the device is capable of receiving and processing, and the address of the mobile device.

Once the redirector program is configured **50**, the trigger points (or event triggers) are enabled at step **52**. The program **12** then waits **56** for messages and signals **54** to begin the redirection process. A message could be an E-Mail message or some other user data item than may have been selected for redirection, and a signal could be a trigger signal, or could

13

be some other type of signal that has not been configured as an event trigger. When a message or signal is detected, the program determines 58 whether it is one of the trigger events that has been configured by the user to signal redirection. If so, then at step 60 a trigger flag is set, indicating that subsequently received user data items (in the form of messages) that have been selected for redirection should be pushed to the user's mobile data communication device 24.

If the message or signal 54 is not a trigger event, the program then determines at steps 62, 68 and 66 whether the message is, respectively, a system alarm 62, an E-Mail message 64, or some other type of information that has been selected for redirection. If the message or signal is none of these three items, then control returns to step 56, where the redirector waits for additional messages 54 to act upon. If, however the message is one of these three types of information, then the program 12 determines, at step 68, whether the trigger flag has been set, indicating that the user wants these items redirected to the mobile device. If the trigger flag is set, then at step 70, the redirector 12 causes the repackaging system (E-Mail or TCP/IP) to add the outer envelope to the user data item, and at step 72 the repackaged data item is then redirected to the user's mobile data communication device 24 via LAN 14, WAN 18, wireless gateway 20 and wireless network 22. Control then returns to step 56 where the program waits for additional messages and signals to act upon. Although not shown explicitly in FIG. 4, after step 68, the program could, if operating in the preferred list mode, determine whether the sender of a particular data item is on the preferred list, and if not, then the program would skip over steps 70 and 72 and proceed directly back to step 56. If the sender was on the preferred list, then control would similarly pass to steps 70 and 72 for repackaging and transmission of the message from the preferred list sender.

FIG. 5 sets forth the method steps carried out by the user's mobile data communication device 24 in order to interface to the redirector program 12 of the present invention. At step 80 the mobile software is started and the mobile device 24 is configured to operate with the system of the present invention, including, for example, storing the address of the user's desktop system 10.

At step 82, the mobile device waits for messages and signals 84 to be generated or received. Assuming that the redirector software 12 operating at the user's desktop system 10 is configured to redirect upon receiving a message from the user's mobile device 24, at step 86 the user can decide to generate a command message that will start redirection. If the user does so, then at step 88 the redirection message is composed and sent to the desktop system 10 via the wireless network 22, through the wireless gateway 20, via the Internet 18 to the LAN 14, and is finally routed to the desktop machine 10. In this situation where the mobile device 24 is sending a message directly to the desktop system 10, no outer wrapper is added to the message (such as message C in FIGS. 1 and 2). In addition to the redirection signal, the mobile device 24 could transmit any number of other commands to control the operation of the host system, and in particular the redirector program 12.

For example, the mobile 24 could transmit a command to put the host system into the preferred list mode, and then could transmit additional commands to add or subtract certain senders from the preferred list. In this manner, the mobile device 24 can dynamically limit the amount of information being redirected to it by minimizing the number of senders on the preferred list. Other example commands include: (1) a message to change the configuration of the host system to enable the mobile device 24 to receive and

14

process certain attachments; and (2) a message to instruct the host system to redirect an entire data item to the mobile device in the situation where only a portion of a particular data item has been redirected.

Turning back to FIG. 5, if the user signal or message is not a direct message to the desktop system 10 to begin redirection (or some other command), then control is passed to step 90, which determines if a message has been received. If a message is received by the mobile, and it is a message from the user's desktop 10, as determined at step 92, then at step 94 a desktop redirection flag is set "on" for this message, and control passes to step 96 where the outer envelope is removed. Following step 96, or in the situation where the message is not from the user's desktop, as determined at step 92, control passes to step 98, which displays the message for the user on the mobile device's display. The mobile unit 24 then returns to step 82 and waits for additional messages or signals.

If the mobile device 24 determines that a message has not been received at step 90, then control passes to step 100, where the mobile determines whether there is a message to send. If not, then the mobile unit returns to step 82 and waits for additional messages or signals. If there is at least one message to send, then at step 102 the mobile determines whether it is a reply message to a message that was received by the mobile unit. If the message to send is a reply message, then at step 108, the mobile determines whether the desktop redirection flag is on for this message. If the redirection flag is not on, then at step 106 the reply message is simply transmitted from the mobile device to the destination address via the wireless network 22. If, however, the redirection flag is on, then at step 110 the reply message is repackaged with the outer envelope having the addressing information of the user's desktop system 10, and the repackaged message is then transmitted to the desktop system 10 at step 106. As described above, the redirector program 12 executing at the desktop system then strips the outer envelope and routes the reply message to the appropriate destination address using the address of the desktop system as the "from" field, so that to the recipient of the redirected message, it appears as though it originated from the user's desktop system rather than the mobile data communication device.

If, at step 102, the mobile determines that the message is not a reply message, but an original message, then control passes to step 104, where the mobile determines if the user is using the redirector software 12 at the desktop system 10, by checking the mobile unit's configuration. If the user is not using the redirector software 12, then the message is simply transmitted to the destination address at step 106. If, however, the mobile determines that the user is using the redirector software 12 at the desktop system 10, then control passes to step 110, where the outer envelope is added to the message. The repackaged original message is then transmitted to the desktop system 10 at step 106, which, as described previously, strips the outer envelope and routes the message to the correct destination. Following transmission of the message at step 106, control of the mobile returns to step 82 and waits for additional messages or signals.

FIG. 6 sets forth a system for redirecting messages having attachments 200, preferably using the redirector program discussed above. This system preferably includes a desktop system 214A, which is associated with a mobile data communication device 214B, a host system 402, a relay system 410, and a plurality of attachment displayers 416. The host system includes a datagram component 202A, a redirector program 202B, and an attachment processing component

202C. The datagram component 202A is used to communicate datagrams 200 (i.e., messages or other types of information) between the host system 202 and the desktop system 214A. The host system 202 could be similar to the server 11 shown above in FIG. 2, in which case the host 202 and the desktop 214A would be coupled via a LAN. Alternatively, however, the host 202 could be remote from the desktop 214A, and could be coupled to it via a LAN, WAN, the Internet 208, a wireless network (not shown), a cableTV network, a satellite network, or any other type of communication medium. The redirector program 202B is similar to the redirector software described above. The attachment processing component 202C provides the functionality described below with reference to FIGS. 7-8.

The host system 202 is separated from any external networks by a firewall system 206. Firewall systems 206 are known in this field, and provide a security function for protecting an internal corporate network from any external networks. The firewall 206 is, in turn, connected to an external network 208, such as the Internet, which is in turn connected to a relay system 210 and then to the wireless network 212. As noted above, the wireless network 212 could be any type of digital or analog wireless communication network, such as a packet data network, a cellular network, a digital cellular network, a satellite network, a microwave network, etc.

The mobile data communication device 214B is configured to operate on the wireless network 212. In addition, the mobile data communication device 214B is preferably configured to operate on one or more short-range wireless frequencies in order to wirelessly communicate information 215A, 215B between the mobile device 214B and the attachment displays 216. The mobile device 214B and the attachment displays 216 could be Bluetooth®-enabled devices for communicating at the short-range frequencies associated with the Bluetooth wireless standard. Other short-range wireless standards could also be utilized. The frequencies at which the short-range communication link operate could be RF, microwave, cellular, optical, or Infrared frequencies. The attachment displays 216 are used by the mobile device 214B to process the attachment element 200B of the datagram 200, and may be one or more of the following devices: printers, fax machines, telephones, cellular phones, copying machines, video display, or any other type of device capable of processing an attachment.

In the system shown in FIG. 6, a datagram with an attached file 200 is sent to the host system 202. The host system 202 then sends the datagram with the attachment 200 intact to the desktop 204A of the recipient of the datagram 200 via the datagram component 202A. The datagram component 202A recognizes the recipient address in the datagram 200 and subsequently forwards the datagram 200 on to the desktop system 214A. The redirector component 202B of the host system 202B also sends the datagram 200A, stripped of the attachment 200B, through the host firewall 206 to the relay 210 and then on to the mobile device 214B via the Internet 208 and the wireless network 212. In a preferred embodiment, the attachment 200B is not initially redirected by the host system 202 when the datagram 200A is redirected. Alternatively, it is possible that automatic forwarding of attachments is possible; especially if the attachment is in a format that can be handled by the mobile device. The datagram 200A contains the original message and also contains information about the attachment 200B, such as the file name, size, and file type.

In a preferred embodiment, after the datagram 200A (minus the attachment 200B) is received at the mobile

device 214B, the mobile device 214B will receive a command either from the host system 202 or from the user of the mobile device to find an attachment displayer 216 within its vicinity to process the attachment 200B. Alternatively, the mobile device 214B or user may automatically attempt to find an attachment displayer when the datagram 200A is received. Preferably through short range wireless communication 215A, 215B, the mobile device 214B will query 215A attachment displays 216 in the local area of the mobile device 214B to determine whether they can process the attachment 200B. The attachment displays 216 will then send back 215B to the mobile device 214B information pertaining to their location, electronic address, and the type of attachment files they can handle. The mobile device then processes this information regarding the attachment displays 216, and sends the host system 202 an attachment displayer choice to use with the attachment 200B. The attachment component 202C of the host system receives the attachment displayer choice from the mobile device 214B, and will then send the attachment 200B to the chosen attachment displayer either through the wireless network 212, directly through the Internet 208, via a LAN connection, via a telephone or cellular connection, or via any other type of connection as specified by the information provided from the chosen attachment displayer 216.

In an alternative embodiment of this system, the attachment component 202C of the host system 202 would contain a database of attachment displays 216 to which it sends attachments 200B by default depending on the file type. This database would include such information as displayer location, compatibility, and security. In this embodiment of the system, the mobile device does not choose attachment displayer 216 in real-time, although the user may configure the system in advance to use a particular attachment displayer 216 contained in the database. Alternatively, the host system 202 may prompt the user of the mobile device 214B to select from a list of potential attachment displays 216, or the host may actively determine the location of the mobile device 214B, and then present a list of potential attachment displays 216 for selection by the user based upon positioning information of the mobile device in relation to the potential attachment displays 216.

FIG. 7 is a flow diagram setting forth a method of redirecting a message attachment to an attachment displayer 216 that is identified by the mobile device 214B. In step 220, the datagram with an attachment 200 is received by the host system 202. The redirector component 202B of the host system 202 sends the datagram 200A to the mobile 214B with information about the attachment in step 222. Note that prior to this step, the attachment 200B is separated from the datagram 200, and is not directly transmitted to the mobile 214B along with the message portion of the datagram 200A. In step 224, the mobile device 214B is instructed to detect the availability of attachment displays 216 in its local area. This step could be accomplished automatically when the datagram 200A is received, or it could be initiated through a menu selection by the user of the mobile device 214B. Preferably, this step 224 is carried out using a short-range wireless exchange 215A, 215B between the mobile device 214B and nearby attachment displays 216.

Having obtained this information about the available attachment displays 216, the mobile device 214B in this step 224 then transmits the availability information to the host system 202. In step 226, the host 202 determines whether the attachment 200B is a compatible format for at least one of the attachment displays 216 that were discovered in step 224. If a compatible attachment displayer is

17

found, then this device is selected for processing the attachment **200B**. If a compatible device is not found, however, then in step **228** the attachment **200B** is converted into a suitable format by the host system **202** for one of the discovered attachment displayers **216**. In step **230**, the attachment **216** selected by the host system **202** then sends the mobile device **214B** its electronic routing address. This electronic address can be an IP address, a telephone number, or a machine address. The mobile device **214B** then sends the routing address of the attachment **216** back to the host system **202** in step **232**. In step **234**, the attachment component **202C** of the host system **202** uses the routing address to redirect the converted attachment **200B** to the selected attachment **216**. The host system **202** then notifies the mobile device **214B**, in step **236** that the attachment **200B** has been redirected to the attachment **216**.

Alternatively to the method described in FIG. 7, instead of the host system **202** selecting the appropriate attachment **216**, the selection could be made at the mobile device **214B**. For example, knowing the type of attachment at the mobile device **214B**, which could be provided in the datagram **200A**, and having discovered the available attachment displayers **216**, the mobile device **214B** could then select the appropriate attachment **216**, either automatically or based on input from the user of the mobile device **214B**. Electronic address information of the selected attachment **216** would then be routed to the host system **202**, which would then transmit the attachment **200B** directly to the selected attachment **216** by whatever network connection is appropriate.

FIG. 8 is a flow diagram setting forth a method of redirecting a message attachment to an attachment **216**, where the attachment **216** is identified by the host system **202**. In step **240**, the host system **202** receives a datagram **200** with an attachment. The redirector component **202B** sends the datagram (minus the attachment) **200A** to the mobile **214B** with information about the attachment in step **242**. In step **244**, the host system **202** determines the attachment format type. From a database of attachment displayers **216** coupled to the attachment component **202C** of the host system **202**, the host system **202** will match the attachment format type with a suitable attachment **216** in step **246**. In step **250**, the host **202** redirects the attachment **200B** to the selected attachment **216** based on the information in the attachment component database. In step **252**, the host sends a notification to the mobile device **214B** when the attachment has been redirected and at which attachment **216** the attachment will be available.

If the attachment is not compatible with any of the attachment displayers **216** in the attachment component database in step **248**, then the host **202** may query the mobile device **214B** in step **254**. In step **256** the mobile device **214B** interrogates attachment displayers **216** within the mobile device's vicinity, preferably via a short-range wireless communication exchange **215A**, **215B**. The mobile device **214B** then displays the information that the responsive attachment displayers **216** sent back to the device **214B** in step **258**. This information can include routing address, compatibility and physical location. The user of the mobile device **214B** may then make the selection of the attachment **216** in step **260**. In step **262**, the mobile device **214B** then sends the host system **202** the selection of the attachment **216** including the routing information for the selected device **216**.

Alternatively, the host system **202** may make the selection of the appropriate attachment **216** using location

18

information of the mobile device **214B**. This location information can be derived based upon communications between the mobile device **214B** and the wireless network **212**, or it can be based upon a query of the mobile device **214B** to transmit its location information to the host system **202**, which may be obtainable by a variety of methods, such as an internal GPS receive, a triangulation methodology with a plurality of base stations of the wireless network, etc. In any event, the host system **202** uses the mobile device's location information to select the most appropriate attachment **216** by first selecting the attachment displayers **216** in the database of displayers that are capable of processing the transaction and then by comparing location information of the selected displayers **216** with the location information of the mobile device **214B**.

An alternative embodiment to FIG. 6 is illustrated in FIG. 10. FIG. 10 sets forth a system for redirecting messages having attachments **200**, preferably using the redirector program discussed above. This system preferably includes an attachment processing component **202C** that provides the additional functionality described below. The attachment processing component **202C** converts attachments **200B** into one or more formats that are acceptable for the mobile device **214B**, prior to transmission to the mobile device **214B**, such that the mobile device **214B** can display the attachment **202B** to the user thereby not requiring the use of attachment displayers **216**. In this manner, the attachment displayers may be circumvented. However, in this case the wireless network **212** preferably is robust and has a large bandwidth to accommodate large attachment transmissions.

In one embodiment of the attachment processing component **202C**, attachments are "trimmed" in that only a portion of the attachment **200B** is sent to the mobile device **214B**. If the user after viewing the attachment desires to see the rest of the attachment, then the user may send a command to push the remaining portion of the attachment to the mobile device **214B**. Alternatively, the user may request the attachment to be sent to an attachment **216**. When the attachment processing component **202C** converts the attachments, the converted attachment is preferably compressed in size and may be encrypted. The packaging of the attachments, if needed, is accomplished as discussed above. Advantageously, the processing and overhead associated with conversions from a plurality of attachment formats to one or more common formats compatible with the mobile device **214B** is accomplished at the host system **202**.

Having described in detail the preferred embodiments of the present invention, including the preferred methods of operation, it is to be understood that this operation could be carried out with different elements and steps. This preferred embodiment is presented only by way of example and is not meant to limit the scope of the present invention which is defined by the following claims.

What is claimed:

1. A method of redirecting a message, comprising the steps of:

- receiving a message at a host system, the message having an attachment;
- separating the attachment from the message;
- redirecting the message from the host system to a mobile device;
- redirecting information regarding the attachment to the mobile device, the information including the type of attachment;
- detecting whether an attachment **216** that can process the type of attachment is located nearby the mobile

19

device, and if an attachment displayer is not detected, then converting the attachment to a new type of attachment that can be processed by an attachment displayer that was detected nearby the mobile device, and transmitting a command message from the mobile device to the host system to redirect the attachment to the attachment displayer that can process the new type of attachment,

redirecting the attachment from the host system to the attachment displayer detected by the mobile device.

2. The method of claim 1, wherein the attachment is converted to the new type of attachment at the host system.

3. The method of claim 1, further comprising the step of: prior to separating the attachment from the message, redirecting the message with the attachment from the host system to a desktop system associated with the mobile device.

4. The method of claim 1, wherein the detecting step further comprises the steps of:

transmitting an attachment displayer inquiry from the mobile device; and

receiving one or more attachment displayer responses at the mobile device from the one or more attachment displayers located nearby the mobile device.

5. The method of claim 4, wherein the transmitting and receiving steps are carried out using a short-range wireless communication.

6. The method of claim 5, wherein the mobile device and the one or more attachment displayers that communicate via the short-range wireless communication are Bluetooth-enabled devices.

7. The method of claim 1, further comprising the steps of: determining an electronic address of the attachment displayer that can process the type of attachment; and transmitting the electronic address to the host system.

8. The method of claim 1, further comprising the step of: transmitting an attachment redirection message from the host system to the mobile device indicating that the attachment has been redirected to the attachment displayer detected by the mobile device.

9. The method of claim 8, wherein the attachment redirection message includes the identity and location of the attachment displayer.

10. The method of claim 1, further comprising the steps of:

determining the type of attachment;

accessing an attachment displayer database to identify an attachment displayer that is compatible with the type of attachment; and

selecting the attachment displayer from the database that is compatible with the type of attachment.

11. The method of claim 10, further comprising the steps of:

transmitting a notification message from the host system to the mobile device indicating that the attachment has been redirected to the selected attachment displayer.

12. The method of claim 11, further comprising the steps of:

determining the location of the mobile device; and

selecting the attachment displayer from the database that is compatible with the type of attachment and which is nearby the location of the mobile device.

13. A method of redirecting a message, comprising the steps of:

receiving a message at a host system, the message having an attachment;

20

separating the attachment from the message;

redirecting the message from the host system to a mobile device;

transmitting information regarding the attachment to the mobile device;

the mobile device determining, via short-range wireless communication, whether a first attachment displayer that is compatible with the attachment is located nearby the mobile device; and

if the first attachment displayer is not located, then converting the attachment into a type that is compatible with a second attachment displayer that is located nearby the device, and selecting the second attachment displayer;

redirecting the attachment from the host system to the second attachment displayer.

14. The method of claim 13, further comprising the step of:

prior to separating the attachment from the message, redirecting the message with the attachment from the host system to a desktop system associated with the mobile device.

15. The method of claim 13, wherein the determining step further comprises the steps of:

transmitting an attachment displayer inquiry from the mobile device; and

receiving one or more attachment displayer responses at the mobile device from the one or more attachment displayers located nearby the mobile device.

16. The method of claim 15, wherein the transmitting and receiving steps are carried out using a short-range wireless communication.

17. The method of claim 16, wherein the mobile device and the one or more attachment displayers that communicate via the short-range wireless communication are Bluetooth-enabled devices.

18. The method of claim 13, further comprising the steps of:

determining an electronic address of the second attachment displayer that can process the type of attachment; and

transmitting the electronic address to the host system.

19. The method of claim 13, further comprising the step of:

transmitting an attachment redirection message from the host system to the mobile device indicating that the attachment has been redirected to the second attachment displayer.

20. The method of claim 19, wherein the attachment redirection message includes the identity and location of the second attachment displayer.

21. The method of claim 13, further comprising the steps of:

determining the type of attachment;

accessing an attachment displayer database to identify an attachment displayer that is compatible with the type of attachment; and

selecting the attachment displayer from the database that is compatible with the type of attachment.

22. The method of claim 21, further comprising the steps of:

transmitting a notification message from the host system to the mobile device indicating that the attachment has been redirected to the selected attachment displayer.

21

23. The method of claim 22, further comprising the steps of:

determining the location of the mobile device; and
selecting the attachment displayer from the database that is compatible with the type of attachment and which is nearby the location of the mobile device.

24. A method of redirecting an e-mail attachment from a server to an attachment processor located nearby a wireless mobile device having a short-range wireless transceiver, comprising the steps of:

receiving an e-mail at the server, the e-mail having at least one attachment;

separating the attachment from the e-mail and providing an attachment indicator referring to the attachment;

redirecting the e-mail with the attachment indicator from the server to the wireless mobile device;

the wireless mobile device detecting a nearby attachment processor capable of processing the attachment using a short-range wireless communication between the wireless mobile device and the nearby attachment processor;

transmitting information regarding the detected attachment processor from the wireless mobile device to the server; and

the server redirecting the attachment to the detected attachment processor.

25. The method of claim 24, wherein the server is an e-mail server.

26. The method of claim 24, further comprising the step of:

associating a desktop system with the wireless mobile device, wherein the desktop system is coupled to the server via a wired network; and

redirecting the e-mail with the attachment from the server to the desktop system.

27. The method of claim 26, wherein the desktop system is coupled to the server via a local area network, a wide area network, or a wireless network.

28. The method of claim 24, further comprising the step of:

providing a long-range wireless network for communicating information between the server and the wireless mobile device, wherein the wireless mobile device includes a long-range wireless transceiver.

29. The method of claim 28, further comprising the step of:

coupling the server to the long-range wireless network with a wide area network.

30. The method of claim 29, wherein the wide area network is the Internet.

31. The method of claim 30, further comprising the step of:

providing a firewall system between the server and the wide area network.

32. The method of claim 28, wherein the wireless network is a packet data network, and the server and the wireless mobile device include software for processing data packets.

33. The method of claim 24, wherein the nearby attachment processor includes a short-range wireless transceiver that is compatible with the short-range wireless transceiver on the wireless mobile device.

34. The method of claim 33, wherein the short-range wireless transceiver in the nearby attachment displayer and in the wireless mobile device are both Bluetooth transceivers.

22

35. The method of claim 24, wherein the short-range wireless transceiver is a radio frequency transceiver.

36. The method of claim 24, wherein the short-range wireless transceiver is an infrared transceiver.

37. The method of claim 24, wherein the short-range wireless transceiver is an optical transceiver.

38. The method of claim 24, wherein the nearby attachment processor is a printer.

39. The method of claim 24, wherein the nearby attachment processor is a fax machine.

40. The method of claim 24, wherein the nearby attachment processor is a phone.

41. The method of claim 24, further comprising the step of:

providing an electronic network address as the information regarding the detected attachment processor; and the server using the electronic network address of the detected attachment processor in order to redirect the attachment to the detected attachment processor.

42. The method of claim 41, wherein the electronic network address is an Internet address.

43. The method of claim 41, wherein the electronic network address is a wireless network address.

44. The method of claim 24, wherein the attachment indicator includes an attachment type indicator.

45. The method of claim 24, wherein the attachment indicator includes an attachment size indicator.

46. The method of claim 24, wherein the attachment indicator includes an attachment name indicator.

47. The method of claim 24, further comprising the step of:

receiving a command from the user of the wireless mobile device to begin the detecting step.

48. The method of claim 24, wherein the detecting step is executed automatically by the wireless mobile device when the e-mail with the attachment indicator is received from the server.

49. The method of claim 24, wherein the information regarding the detected attachment processor includes an electronic address and an indication of the types of attachments that the attachment processor can process.

50. A method of redirecting an attachment from a host system to an attachment processor, comprising the steps of:

transmitting an attachment indicator from the host system to a wireless mobile device;

the wireless mobile device detecting an attachment processor capable of processing the attachment using a short-range wireless communication between the wireless mobile device and the attachment processor;

transmitting information regarding the detected attachment processor from the wireless mobile device to the host system; and

the host system redirecting the attachment to the detected attachment processor.

51. The method of claim 50, wherein the attachment is attached to an e-mail, further comprising the steps of:

separating the attachment from the e-mail; and

redirecting the e-mail with the attachment indicator from the host system to the wireless mobile device.

52. An attachment handling system, comprising:

a server for receiving an e-mail having an attachment and for separating the attachment from the e-mail, wherein the server generates an attachment indicator referring to the attachment and transmits the e-mail with the attachment indicator to a wireless mobile device,

a wireless network for coupling the server to the wireless mobile device;

a plurality of attachment processors capable of processing the attachment, wherein the plurality of attachment processors include short-range wireless transceivers; and

wherein the wireless mobile device includes a short-range wireless transceiver for communicating with the plurality of attachment processors, and wherein the wireless mobile device detects one or more of the plurality of attachment processors via a short-range wireless communication when the e-mail with the attachment indicator is received from the server, and transmits information regarding the detected attachment processors to the server, the server redirecting the attachment to one of the detected attachment processors.

53. The system of claim 22, wherein the server is an e-mail server.

54. The system of claim 52, further comprising:

a desktop system associated with the wireless mobile device, wherein the desktop system is coupled to the server via a wired network; and

wherein the server redirects the e-mail with the attachment to the desktop system.

55. The system of claim 54, wherein the desktop system is coupled to the server via a local area network, a wide area network, or a wireless network.

56. The system of claim 54, wherein the wireless network is a long-range wireless network, and wherein the wireless mobile device further includes a long-range transceiver.

57. The system of claim 56, wherein the server is coupled to the long-range wireless network via a wide area network.

58. The system of claim 57, wherein the wide area network is the Internet.

59. The system of claim 58, further comprising:

a firewall system coupled between the server and the wide area network.

60. The system of claim 56, wherein the long-range network is a packet data network, and wherein the server and the wireless mobile device include software for processing data packets.

61. The system of claim 52, wherein the short-range wireless transceivers are Bluetooth transceivers.

62. The system of claim 52, wherein the short-range wireless transceivers are radio frequency transceivers.

63. The system of claim 52, wherein the short-range wireless transceivers are infrared transceivers.

64. The system of claim 52, wherein the short-range wireless transceivers are optical transceivers.

65. The system of claim 52, wherein at least one of the attachment processors is a printer.

66. The system of claim 52, wherein at least one of the attachment processors is a fax machine.

67. The system of claim 52, wherein at least one of the attachment processors is a phone.

68. The system of claim 52, wherein the information is an electronic address of the detected attachment processors.

69. The system of claim 68, wherein the electronic address is an Internet address.

70. The system of claim 68, wherein the electronic address is a wireless network address.

71. The system of claim 52, wherein the attachment indicator includes an attachment type indicator.

72. The system of claim 52, wherein the attachment indicator includes an attachment size indicator.

73. The system of claim 52, wherein the attachment indicator includes an attachment name indicator.

74. A wireless mobile device, comprising:

a long-range wireless transceiver for receiving an e-mail message from a host system, wherein the e-mail message includes an attachment indicator referring to an attachment that is associated with the e-mail message; and

a short-range wireless transceiver for detecting one or more attachment processors and for receiving information regarding the one or more attachment processors; wherein the wireless mobile device transmits the information regarding the detected attachment processors to the host system via the long-range wireless transceiver, the host system then redirecting the attachment to one of the detected attachment processors.

75. The wireless mobile device of claim 74, wherein the long-range wireless transceiver is a wireless packet data transceiver.

76. The wireless mobile device of claim 74, wherein the short-range wireless transceiver is a Bluetooth transceiver.

77. The wireless mobile device of claim 74, further comprising:

software for displaying the e-mail with the attachment indicator to a user of the wireless mobile device and for receiving a command from the user to detect the one or more attachment processors.

* * * * *

UNITED STATES PATENT AND TRADEMARK OFFICE
CERTIFICATE OF CORRECTION

PATENT NO. : 6,438,585 B2
DATED : August 20, 2002
INVENTOR(S) : Gary P. Mousseau and Mihal Lazaridis

Page 1 of 1

It is certified that error appears in the above-identified patent and that said Letters Patent is hereby corrected as shown below:

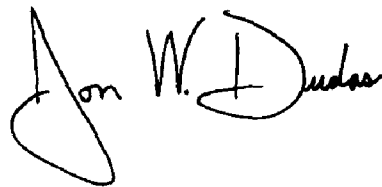
Column 21,
Line 8, change "art" to -- an --

Column 22,
Line 67, change ",", to -- ; --

Column 23,
Line 17, change "22" to -- 52 --
Line 29, change "54" to -- 52 --
Line 38, change "are a" to -- area --

Signed and Sealed this

Ninth Day of November, 2004

A handwritten signature in black ink, reading "Jon W. Dudas". The signature is stylized, with a large, looped initial "J" and a cursive "Dudas".

JON W. DUDAS
Director of the United States Patent and Trademark Office