



US006515378B2

(12) **United States Patent**
Drummond et al.

(10) **Patent No.:** **US 6,515,378 B2**
(45) **Date of Patent:** ***Feb. 4, 2003**

(54) **VEHICLE REARVIEW MIRROR SYSTEM**

5,659,423 A 8/1997 Schierbeek et al. 359/604
5,796,176 A 8/1998 Kramer et al. 307/10.1

(75) Inventors: **John P. Drummond**, Glenageary (IE);
Hassel J. Savard, Grand Rapids, MI
(US); **Kenneth Schofield**, Holland, MI
(US); **Sean J. Fletcher**, Ballinteer (IE);
Kenneth L. Schierbeek, Zeeland, MI
(US)

(List continued on next page.)

FOREIGN PATENT DOCUMENTS

WO WO9914619 3/1999

OTHER PUBLICATIONS

(73) Assignee: **Donnelly Mirrors Limited**, Naas (IE)

(*) Notice: Subject to any disclaimer, the term of this
patent is extended or adjusted under 35
U.S.C. 154(b) by 0 days.

This patent is subject to a terminal dis-
claimer.

Commonly assigned, co-pending U.S. patent application,
Ser. No. 10/173,479, filed Jun. 17, 2002 by Applicants Eric
J. Hoekstra and Kenneth L. Schierbeek, entitled Digital
Electrochromic Mirror System. (DON01 P-980).

Commonly assigned, co-pending U.S. patent application,
Ser. No. 09/952,693, filed Sep. 12, 2001 by Applicant
Kenneth L. Schierbeek, entitled Digital Electrochromic Mir-
ror System. (DON01 P-923).

(List continued on next page.)

(21) Appl. No.: **09/941,061**

(22) Filed: **Aug. 28, 2001**

(65) **Prior Publication Data**

US 2002/0024259 A1 Feb. 28, 2002

Related U.S. Application Data

(63) Continuation of application No. 09/341,450, filed as appli-
cation No. PCT/IE98/00001 on Jan. 9, 1998, now Pat. No.
6,291,905.

(30) **Foreign Application Priority Data**

Jan. 9, 1997 (IE) 970014
Mar. 21, 1997 (IE) 970223

(51) **Int. Cl.⁷** **G02B 5/08**

(52) **U.S. Cl.** **307/10.1; 359/602; 359/604;**
701/49

(58) **Field of Search** 307/10.1; 359/602,
359/604, 878, 60, 601; 701/49, 36; 340/425.72

(56) **References Cited**

U.S. PATENT DOCUMENTS

5,455,716 A 10/1995 Suman et al. 359/838

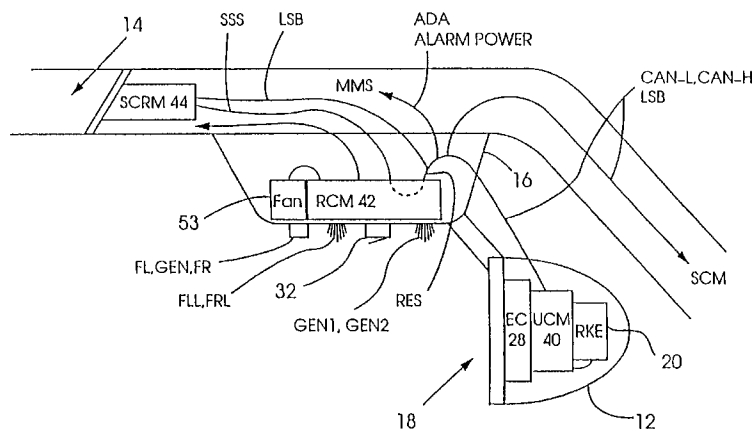
Primary Examiner—Albert W. Paladini

(74) *Attorney, Agent, or Firm*—Van Dyke, Gardner, Linn &
Burkhart, LLP

(57) **ABSTRACT**

A vehicle rearview mirror system suitable for use in a
vehicle comprises an interior rearview mirror assembly, at
least one control and, preferably, at least one exterior rear-
view mirror assembly. The interior rearview mirror assem-
bly includes an interior electro-optic reflective element
having an electrically variable reflectivity. The exterior
rearview mirror assembly includes an exterior electro-optic
reflective element having an electrically variable reflectivity.
The at least one control at least controls a reflectivity level
of the interior electro-optic reflective element, preferably in
accordance with a duty cycle of a pulse width modulated
signal. The at least one control may further control a
reflectivity level of the exterior electro-optic reflective ele-
ment via a bus system of the vehicle. The control or controls
may communicate and/or control an accessory of the vehicle
via the bus system of the vehicle. The controls may comprise
a control node of a vehicle control network.

81 Claims, 6 Drawing Sheets



U.S. PATENT DOCUMENTS

5,798,575	A	8/1998	O'Farrell et al.	307/10.1
5,877,897	A	3/1999	Schofield et al.	359/604
5,959,367	A	9/1999	O'Farrell et al.	307/10.1
6,056,410	A	5/2000	Hoekstra et al.	359/603
6,089,721	A	7/2000	Schierbeek	359/603
6,210,008	B1	4/2001	Hoekstra et al.	359/603
6,291,905	B1 *	9/2001	Drummond et al.	307/10.1
6,299,315	B2	10/2001	Hoekstra et al.	359/603
6,305,807	B1	10/2001	Schierbeek	359/603

6,406,152 B1 6/2002 Hoekstra et al. 359/603

OTHER PUBLICATIONS

Commonly assigned, co-pending U.S. patent application filed Mar. 20, 2000 by Kenneth L. Schierbeek for Digital Electrochromic Mirror System (Attorney Docket No. DON01 P-808).

* cited by examiner

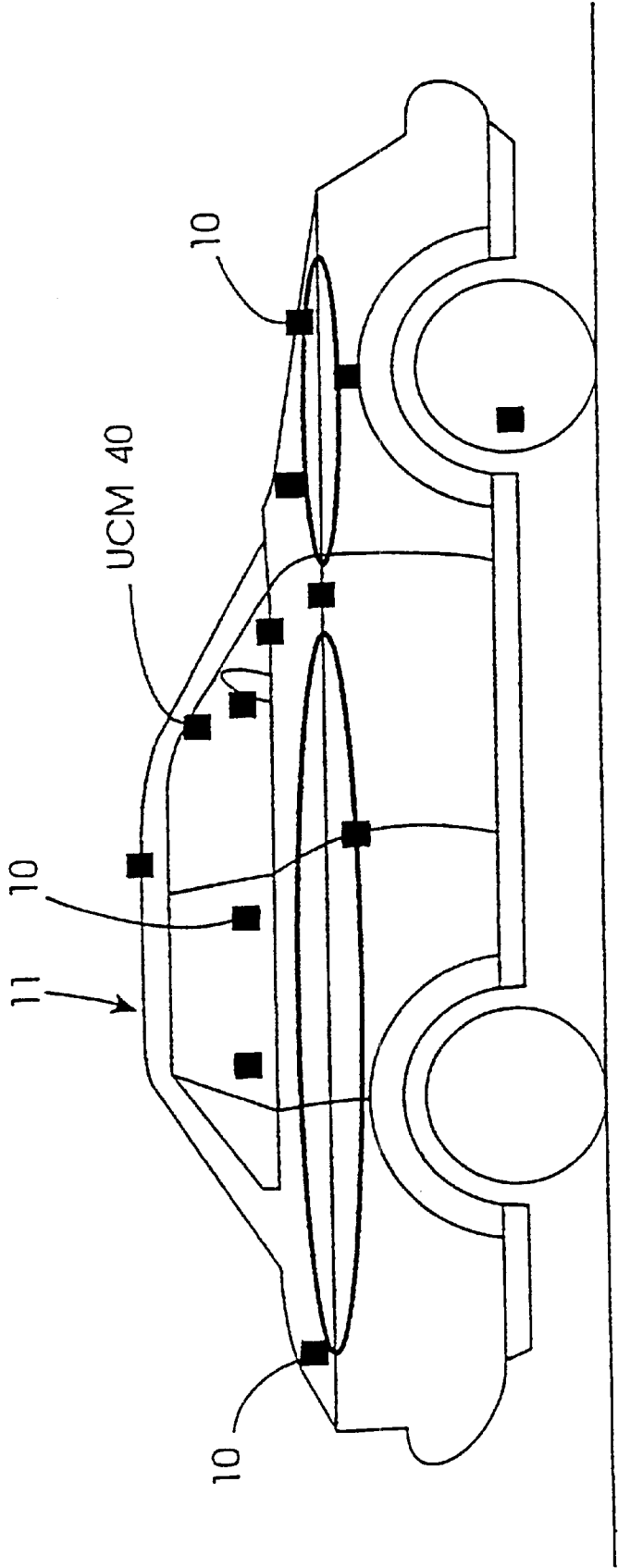


Figure 1

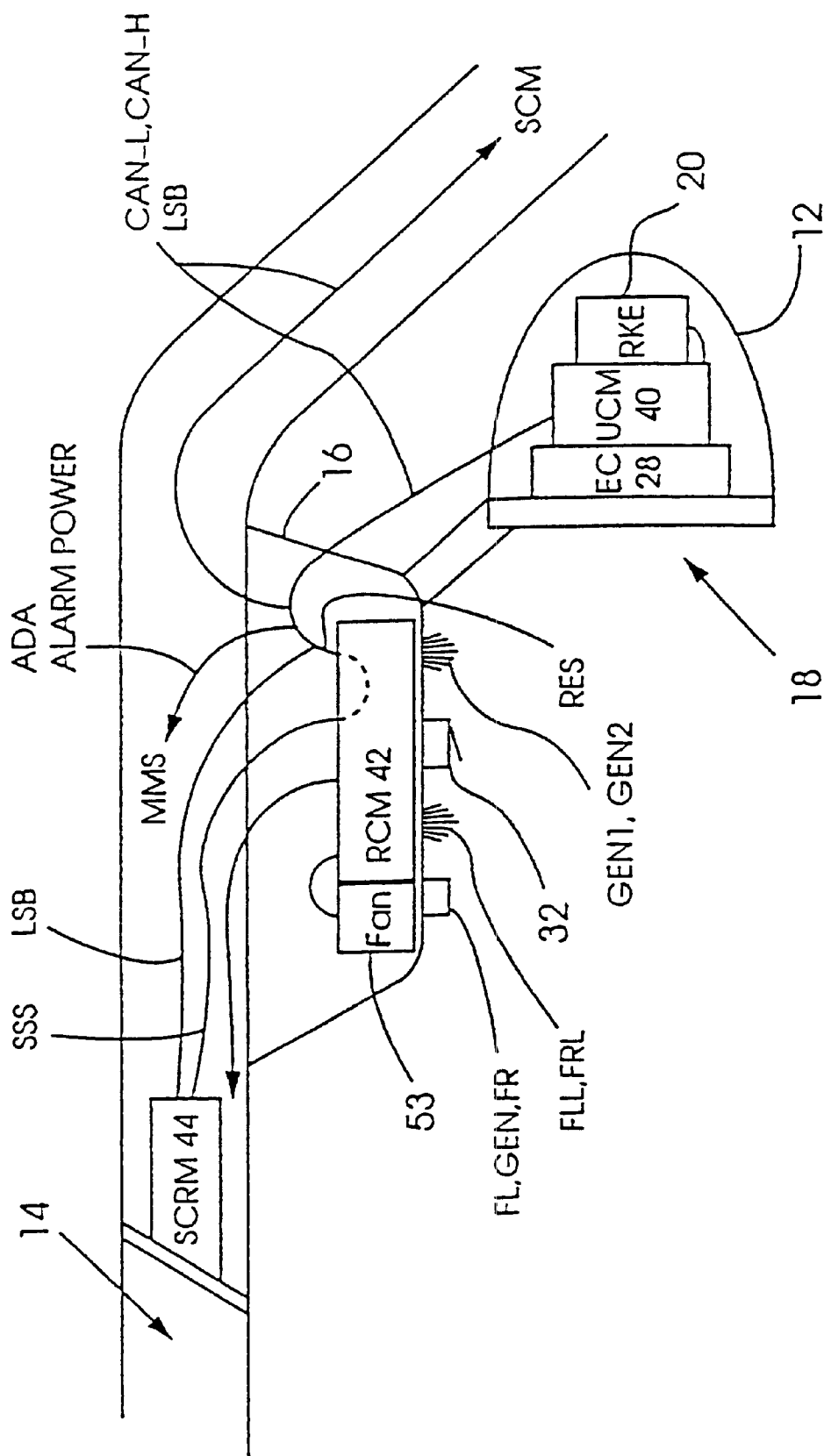


Figure 2

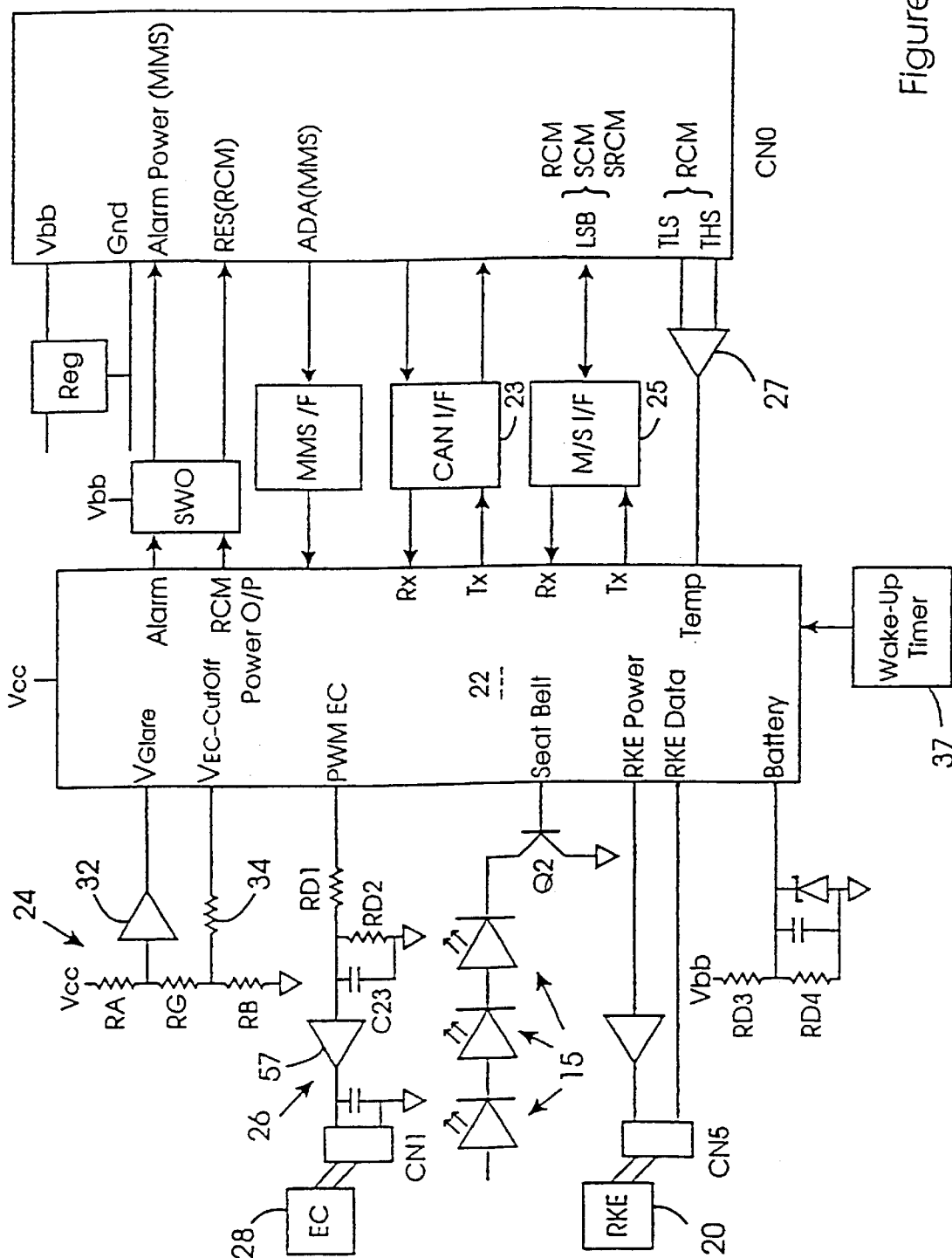


Figure 3

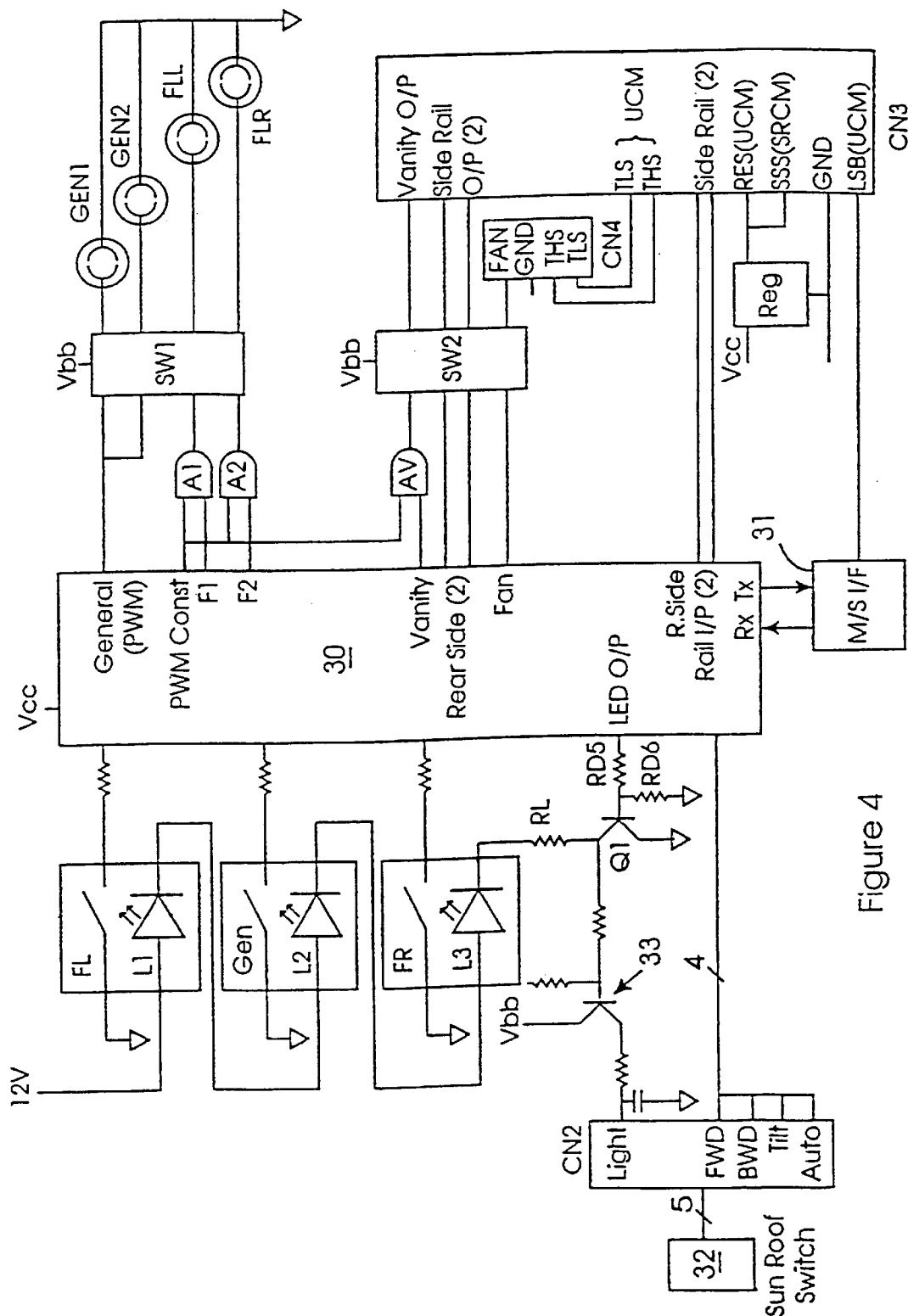


Figure 4

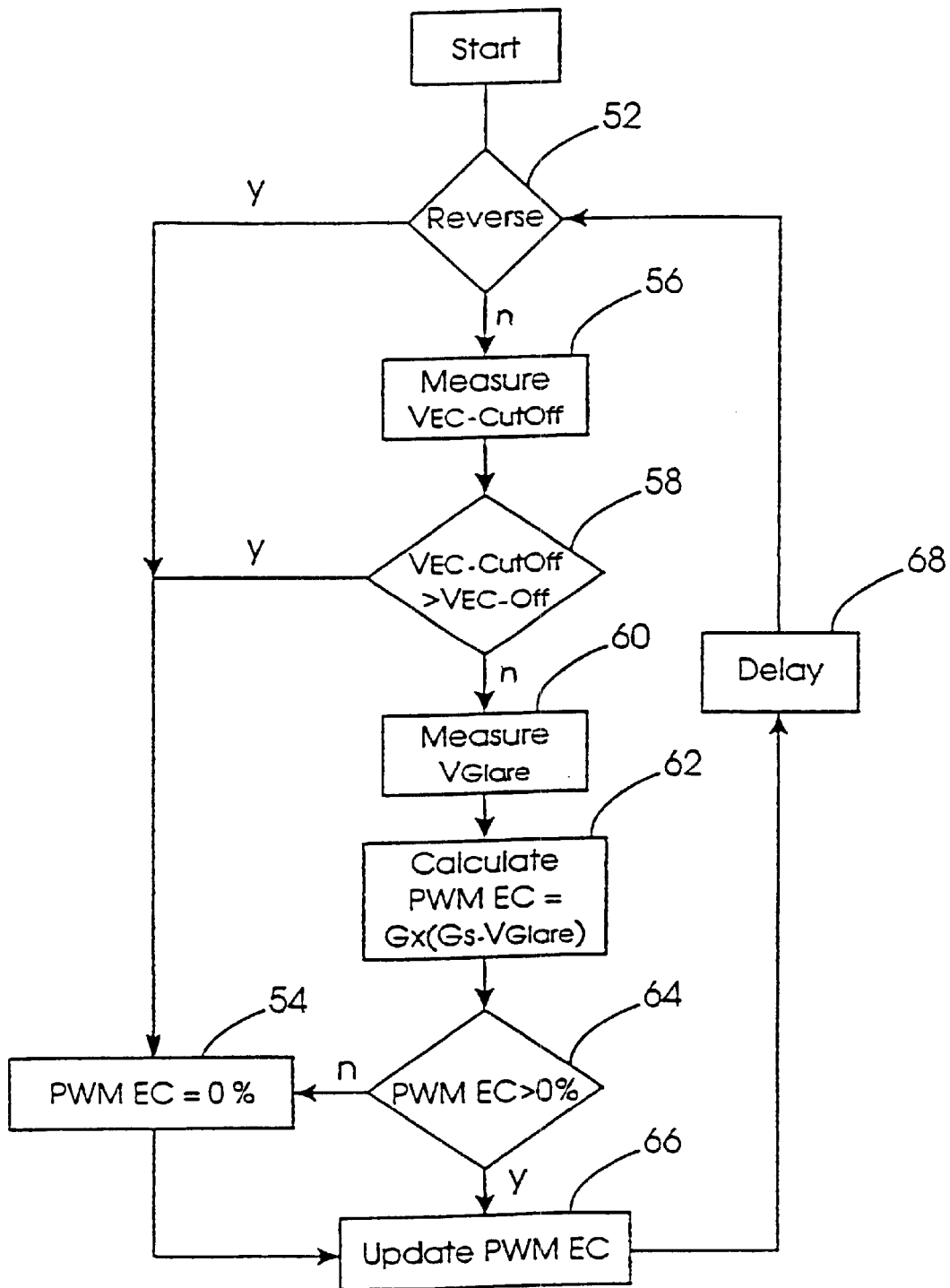


Figure 5

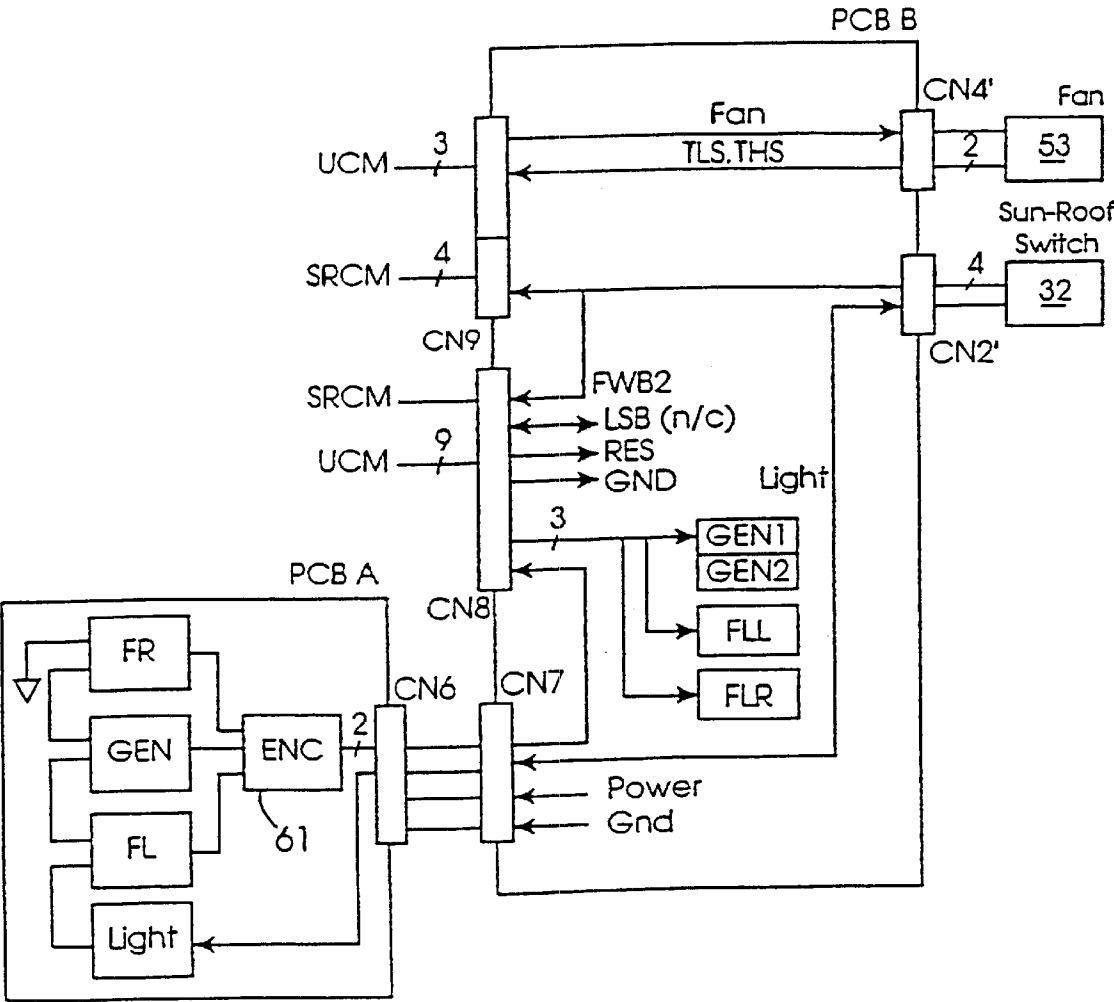


Figure 6

VEHICLE REARVIEW MIRROR SYSTEM

CROSS-REFERENCE TO RELATED APPLICATIONS

The present application is a continuation of U.S. patent application Ser. No. 09/341,450, filed Jul. 8, 1999 for VEHICLE REARVIEW MIRROR AND A VEHICLE CONTROL SYSTEM INCORPORATING SUCH MIRROR, now U.S. Pat. No. 6,291,905, which is the National Phase of and claims priority on International Application No. PCT/IE98/00001, filed Jan. 9, 1998, entitled VEHICLE REARVIEW MIRROR AND A VEHICLE CONTROL SYSTEM INCORPORATING SUCH MIRROR, which are hereby incorporated herein by reference.

The present invention relates to a vehicle rearview mirror and a vehicle control system incorporating such mirror.

According to the present invention there is provided a vehicle rearview mirror comprising a mirror housing containing a variable reflectivity mirror unit and a microcontroller for controlling the reflectivity of the mirror unit.

There is also provided, as a further independent invention, a vehicle control system comprising a rearview mirror housing, a variable reflectivity mirror unit mounted in the mirror housing, a master microcontroller mounted in the mirror housing for controlling the reflectivity of the mirror unit, a roof housing positioned on the interior roof of the vehicle, a slave microcontroller mounted in the roof housing and connected to the master microcontroller, and at least one input and/or output device connected to the slave microcontroller.

There is also provided, as a further independent invention, a vehicle control system comprising a network controlling a plurality of functions of the vehicle, the network having a node located in a rearview mirror housing of the vehicle, such node controlling at least one function of the mirror.

There is also provided, as a further independent invention, apparatus for controlling an optical characteristic of a vehicle component in accordance with the duty cycle of a pulse width modulated signal.

An embodiment of the invention will now be described, by way of example, with reference to the accompanying drawings, in which:

FIG. 1 is a schematic view of a vehicle including a control system according to the invention;

FIG. 2 is a schematic view of the upper windscreen and front roof area of the vehicle and control system of FIG. 1;

FIG. 3 is a block circuit diagram of the UCM 40 in the rearview mirror housing of FIG. 2 for use with a first embodiment of the RCM 42 in the roof housing of FIG. 2;

FIG. 4 is a block circuit diagram of the first embodiment of the RCM 42 in the roof housing of FIG. 2;

FIG. 5 is a flow diagram illustrating the method by which the node of FIG. 3 controls the reflectivity of an electro-optic mirror; and

FIG. 6 is a block circuit diagram of a second embodiment of the RCM 42 in the roof housing of FIG. 2.

Referring now to the drawings wherein similar numerals have been used to indicate like parts, a vehicle control system comprises a network of nodes 10 distributed about the vehicle 11. Each node 10 controls the operation of particular part of the vehicle, e.g. the engine, brakes, door locks, etc. In the embodiment of the invention, one of the nodes, identified as UCM 40 in FIG. 1, is located in the housing of the vehicle interior rear view mirror as will be described.

Each node 10 in the network communicates with each other node using an industry standard CAN (Controller Area Network) network protocol. A CAN network is a multi-master CSMA/CA (carrier sense multiple access collision avoidance) arbitrated bus, such as has been developed by Bosch specifically for use in the automotive industry where it is critical that messages be executed within a pre-determined time span; see, for example, PCT Application Nos. WO 90/01739 and WO 94/06081. Each node includes a controller having a back end and a front end. The back end of the controller is connected to sensors and actuators while the front end communicates with each of the other node front ends across a two-wire bus, CAN_H, CAN_L.

The front end of each node controller in a CAN network has a memory containing a table of node-specific message identifiers. Only messages with these identifiers can be transmitted or received by the node. There is a maximum of 2048 identifiers. For transmission, the back end of the controller writes a message to a message buffer in the front end controller and sets a flag. The transmission is then automatically executed by the front end of the controller. The front end decides whether to process a message placed on the network by any other node using an acceptance filter. The criterion for this decision is the identifier included in every message. Only messages, which pass the acceptance filter are stored in the receive buffer and transferred to the back end controllers memory.

There are a number of available microcontrollers incorporating CAN controllers, for example, a Motorola MC68HC08AZ0. Other examples of CAN controllers are Philips PCA 82C200 or Intel 82526. These controllers enable nodes to communicate with one another to transmit the status of sensors or actuators across the network. It will be seen that because only a two-wire bus is required to connect each of the nodes on the network together, significant weight savings can be made in the vehicle's electrical harness for the same level of functionality.

In the present embodiment, a CAN node 40 for controlling electronic equipment in the upper area of the vehicle, referred to as a UCM (upper control module), is located inside the housing 12 of an interior rearview mirror 18, FIG. 2. It is advantageous to place the UCM 40 in the mirror housing as it is less susceptible to noise and excess temperatures than if it were located in or adjacent the roof cavity of the vehicle. It is therefore possible to use a controller and associated electronics with a lower temperature rating than if the UCM 40 were placed in the roof cavity. If a higher rated controller is used, however, it can perform more reliably than if it were located in the roof cavity.

The mirror 18 contains an electro-optic mirror unit, that is, a mirror unit of a type whose reflectivity can be varied as a function of an applied voltage. In the present embodiment the mirror unit comprises an electro-optic cell (EC) 28. As is well known, an electro-optic cell comprises an electro-optic medium such as an electrochromic or liquid crystal material sandwiched between a pair of, usually, glass plates. When a voltage is applied across the layer its colours, or darkens, to decrease the transmissivity of the cell, the amount of darkening increasing with increasing voltage. Within the mirror housing 12 the cell 28 is located in front of a reflecting surface (or alternatively the reflecting surface may be formed directly on one of the glass plates) so that, as seen by the driver, the reflectivity of the mirror decreases with increasing voltage. The construction and operation of such mirrors is very well known in the art; see, for example, U.S. Pat. Nos. 5,140,455, 5,572,354 and 5,151,816, and European Application No. 92308022.0, or as described for

example in the following papers: N. R. Lynam, "Electrochromic Automotive Day/Mirrors", SAE Technical Paper Series, 870636 (1978); N. R. Lynam, "Smart Windows for Automobiles", SAE Technical Paper Series, 900419 (1990); N. R. Lynam and A. Agrawal, "Automotive Applications of Chromogenic Materials", Large Area Chromogenics: Materials & Devices for Transmittance Control, C. M. Lampert and C. G. Granquist, eds., Optical Eng'g Press, Washington (1990).

In the present embodiment, electronic equipment in the upper area of the vehicle is controlled by or communicates with the UCM 40 and includes the electro-optic cell (EC) 28 of the mirror 18, a remote keyless entry (RKE) unit 20, a vehicle sun-roof 14, an alarm siren (not shown), and various lamps, switches and other equipment contained in a roof housing 16 positioned on the interior roof of the vehicle. The UCM 40 controls, inter alia, the cell 28 and the RKE unit 20 directly, but controls the other equipment indirectly via respective slave controllers which communicate with the UCM 40 via a local sector network which, in the present embodiment, is a half-duplex master-slave network. These other controllers are a roof control module (RCM) 42 located in the roof housing 16, a siren control module (SCM, not shown) and a sun-roof control module (SRCM) 44. In the present embodiment, master-slave communication is implemented across a conventional single-wire interface complying with ISO9141 referred to hereafter as LSB.

Turning now to FIG. 3, the UCM 40 of the present embodiment includes a Motorola MC68H08 microcontroller 22 mounted on a printed circuit board (PCB) within the mirror housing 12. The controller is connected to the CAN bus via a CAN interface circuit 23 which includes a Philips PCA82C250 CAN transceiver. The transceiver complies with ISO/DIS 11898 and converts the two-wire CAN bus signal into separate Rx and Tx signal lines which connect to respective input and output pins on the controller 22.

The controller 22 is connected to an input circuit 24 and an output circuit 26 for controlling the transmissivity of the electro-optic cell 28 and hence the reflectivity of the mirror 18.

The input circuit 24 comprises a series of three resistors RA, RG and RB which are used to determine the ambient light levels around the vehicle. Both RA and RG are light dependent resistors whose resistance is inversely proportional to the level of light falling on them. RA and RB are incorporated in respective ambient light sensors facing forwardly and rearwardly of the vehicle respectively. Since the construction and operation of such sensors is well known only the electrically operative part, the resistors themselves, are shown in the drawings. The node between RG and RA is connected via buffer circuitry 32 to an analog input pin Vglare of the controller. In conditions where the vehicle is lit primarily from the rear by the headlights of another vehicle, the level of light falling on RG exceeds that falling on RA and the voltage drop across RG decreases. Vglare thus decreases which, as will be seen in FIG. 5 to be described, causes the controller 22 to decrease the transmissivity of EC 28 and hence decrease the reflectivity of the mirror 18.

It is desirable to assess the overall ambient light level in determining the mirror reflectivity so that the degree of control can be reduced in daylight or relatively bright ambient conditions. RB is a constant value resistor and the node between RB and RG is connected via a biasing resistor 34 to an analog input pin Vec_cutoff of the controller 22. Thus, in brightening conditions, as the aggregate light level

falling on resistors RA and RG increases and their resistance decreases, the voltage drop across RB also increases by a corresponding level. It will be seen that the increasing voltage drop across RB causes Vec_cutoff to rise gradually, and thus as the overall ambient light level increases the degree of control gradually decreases as also will be seen in FIG. 5.

The output circuit 26 drives the electro-optic cell 28 via a digital pulse width modulated (PWM) output pin PWM EC to control the mirror reflectivity. In the present case the output pin PWM EC provides a voltage level of 5 volts when it is on, and zero volts when it is off. PWM control obviates the need for either an internal or an externally addressed DAC. It will be seen that by separating the input circuit 24 and the output circuit 26 with the UCM microcontroller, the UCM is able to assert intelligent software control over the mirror reflectivity.

The cell 28 is connected to the controller 22 via a two pin connector CN1 on the UCM PCB or alternatively the connection may be made with soldered wires. A voltage difference of 1.4 V supplied to the cell 28 across the two pins of the connector is sufficient to drive the cell to minimum transmissivity and hence reduce the mirror reflectivity to a minimum, while the absence of a voltage difference between the two pins clears the cell. Therefore, a pair of resistors RD1 (100K) and RD2 (39K) are used to divide the 5 volts on the output pin PWM EC of the controller in the ratio 28:72, providing 1.4 V at the junction of the resistors RD1 and RD2 for a constant 5 volts at PWM EC.

The 5 volt output signal at PWM EC is modulated by the controller 22 under software control (FIG. 5) to have an on/off duty cycle between 0 and 100%. A capacitor C23, connected in parallel with resistor RD2, is used to smooth PWM EC signals with a duty cycle less than 100% to a substantially constant voltage between 0 and 1.4 V in proportion to the duty cycle. The value of the capacitor C23 is chosen as 1 uF so that the corner frequency of the filter comprising RD1, RD2 and C23 is significantly below the frequency of the PWM signal to provide a smooth DC signal. A buffer circuit 57 is connected between the voltage divided output signal and the connector pin to provide a high impedance quick clearing output to the cell 28.

Microprocessor control of the cell 28 enables parameters controlling the level of mirror reflectivity to be programmed. These parameters are:

1. A threshold ambient light level at which the mirror should be cleared, (Vec_off);
2. Gain (G); and
3. Start of colour (Cs)

These three programmable parameters are stored in reprogrammable, non-volatile memory and are updated from a computer which plugs into the CAN bus.

Once initiated, a software routine, FIG. 5, runs continually on the controller 22 and monitors Vec_cutoff and Vglare to determine the duty cycle of the 5 volt signal at the PWM EC output pin. The routine first checks at step 52 whether the vehicle is in reverse. If so, the mirror is cleared at step 54 by setting the desired value of the duty cycle of the PWM EC signal to 0% and updating the duty cycle accordingly at step 66. If not, Vec_cutoff is measured at step 56. The routine then checks at step 58 if Vec_cutoff is greater than the pre-programmed threshold level Vec_off. If so, the mirror is cleared as before at steps 54 and 66.

5

The routine continues by measuring Vglare at step 60 and the duty cycle of PWM EC is calculated at step 62 using the formula:

$$\text{Gain} \times (\text{Start of colour} - \text{Vglare})$$

If this formula procedures a negative value, as determined at step 64, which is possible if Cs is set low, then the cell is cleared at step 54. Otherwise the duty cycle of PWM EC is updated at step 66 to the value calculated at step 62, whereupon the routine waits for a pre-determined delay 66 before returning to step 52.

Returning to FIG. 3, the controller 22 communicates with each of the RCM, SCM and SRCM slave controllers via the single-wire bus LSB. The half-duplex signalling on LSB is converted by a conventional ISO 9141 compatible interface circuit 25 into separate Rx and Tx signal lines which connect to respective input and output pins on the controller.

The controller 22 communicates with respective controllers in the slave devices in a frame format comprising a plurality of words, each word comprising 1 start bit, 9 data bits and 1 stop bit. The controller 22 intermittently transmits a polling frame including a header word, a body comprising up to 8 words and a 1 word checksum onto the bus, LSB. The header word includes a four bit frame ID, a four bit negated frame ID, for error checking, with the 9th bit always set to 1. The nine bit format allows for a parity bit to be used for each word in the body although this is not necessary. The checksum is a modulo 256-sum of the data bytes.

If a slave controller sees a frame for which it is to respond, it replies by transmitting a frame including the relevant data back to the controller 22.

FIG. 4 is a schematic illustration of a first embodiment of the RCM 42 contained in the roof housing 16. In the first embodiment, the RCM 42 includes a Motorola MC68HC05D9 microcontroller 30 mounted on a PC3 in the roof housing 16. The RCM controller 30 communicates with the UCM controller 22 via the bus LSB, through connectors CN0 and CN3 on the UCM and RCM PCBs respectively. The half-duplex signalling on LSB is converted by an interface circuit 31 circuit corresponding to the interface circuit 25 of the UCM 40 which converts the LSB signal into separate Rx and Tx signal lines which connect to respective input and output pins on the controller 30. The RCM controller 30 is connected to three switches FL, Gen and FR mounted on the RCM PCB in the roof housing 16. Each switch includes switch contacts located behind respective buttons exposed at the surface of the roof housing 16 which are actuable from within the vehicle cabin to open and close the switch contacts. Each switch has an associated LED L1, L2, L3 which are wired in series and connected between a protected battery voltage 12 V nominal and via a current limiting resistor RL to the collector of a transistor Q1. The base of Q1 is connected to a digital output pin LED O/P via a resistor-divider network RD5, RD6. In low ambient light conditions, as determined by the controller 30 over the CAN network, LED O/P is switched high to turn on the transistor Q1 and light the LED's which in turn illuminate the buttons of their respective switches FL, Gen, FR.

The RCM controller 30 is further connected to a sun-roof switch 32 also mounted within the roof housing 16, FIG. 2, the switch 32 also having an LED for inbuilt illumination of the switch. A suitable switch is manufactured by Alps Electric Co. Ltd. Japan. The switch 32 is connected to the controller 30 via a multi-wire flexible cable to a connector CN2 on the RCM PCB. The collector of the transistor Q1 is connected via a driver circuit 33 to a pin. Light, on the connector CN2 so that when LED O/P is switched high, the sun-roof switch is also illuminated.

6

The sun-roof switch includes outputs indicating the direction a user wishes to move the sun-roof 14—forward (FWD), backward (BWD), tilt (Tilt) and automatic open (Auto). Each output is connected to a respective input pin on the controller 30 via the connector CN2. When any output changes state, the controller 30 waits to be polled by the UCM controller 22 before transmitting the information relating to the change of state of the switch 32.

The UCM controller 22 then polls the controller (not shown) in the SRCM 44 via LSB to communicate the position of the sun-roof switch to the SRCM. The sun-roof controller then moves the sun-roof, or not, in the appropriate direction. It will be seen that because the sun-roof switch 32 is not connected directly to the sun-roof 14, but via the UCM 40, the conditions under which the roof opens/closes or tilts can be user specified.

The technique whereby the RCM controller 30 communicates a change in state of an input to the UCM controller 22 which in turn instructs a slave node, for example the RCM 42 itself, to actuate an output, is also applied to the switching of lamps located around the vehicle.

A number of such lamps are mounted on the RCM PCB in the roof housing 16, that is, two general lamps GEN1, GEN2 and left and right front reading lamps FLL and FRL, FIGS. 2 and 4. Each lamp is switched by an output pin of the controller 30 via one channel of a quad high side driver SW1 to the battery voltage Vbb. The RCM controller 30 is further connected to vanity lamps (not shown) located above two front sun-visors and two rear side rail reading lamps (not shown) through a second quad high side driver SW2. These lamps and the respective switches (not shown) for the side rail reading lamps are connected to the RCM PCB via the connector CN3.

The RCM 42 uses PWM control to ramp the voltage supply when turning on the general lamps GEN1 and GEN2, and to control the final voltage supplied to the general lamps as well as the voltage supplied to the vanity lamp and to the front reading lamps FLL, FRL to prevent overdriving the lamps due to variations in the battery level Vbb.

The general lamps GEN1, GEN2 are both ramped on when a vehicle door is opened, or when the Gen switch is closed, in the following manner. In the former case the opening of a door is signalled across the CAN bus to the UCM controller 22 in known manner, while in the latter case the controller 30 reports the closure of the Gen switch to the UCM controller 22. In either case the controller 22 then instructs the RCM controller 30 across the bus LSB to turn on the general lamps GEN1, GEN2 by specifying a maximum PWM duty cycle of a 5 v PWM output pin, General. This specified maximum PWM duty cycle is inversely proportional to the battery voltage Vbb, which is determined by the UCM controller 22 via a resistor-divider network RD3, RD4, FIG. 3.

The General output pin is connected to two inputs on the quad high side driver SW1. When enabled by a 5 v signal from the General output pin, these inputs connect the battery voltage Vbb to the respective general lamps GEN1, GEN2; thus the battery voltage supplied to the lamps GEN1, GEN2 is pulse width modulated with the same instantaneous duty cycle as the voltage at the General output pin.

The RCM controller 30 steps the General output from 0% to the maximum PWM duty cycle specified by the UCM controller 22 over a pre-determined number of steps as a function of time. By matching the step increments to the increasing resistance value of the lamp filaments as they heat up, the power dissipated by the lamps is ramped approximately linearly and so the problem of lamp failure due to thermal shock is mitigated as well as providing an enhanced visual effect.

Similarly, the RCM controller **30** is instructed to turn on the front reading lamps FLL, FRL and the vanity lamp located in the sun visor by the UCM controller **22**. In the case of the front reading lamps, the RCM controller **30** detects the closing of switch FL or FR and reports this to the UCM controller **22**. The UCM controller **22** then instructs the RCM controller **30** to turn on the respective lamp FLL or FRL by enabling output F1 or F2 and specifying a constant PWM duty cycle of the voltage at an output, PWM Const, of the controller **30**. As before, the specified PWM duty cycle is inversely proportional to battery level.

In the case of the vanity lamp, the RCM controller **30** is instructed to switch the vanity lamp on by the UCM controller **22** when the latter sees across the CAN bus that the sun-visor has been pulled down. This is done by enabling the Vanity output of the controller **30** and again specifying a constant PWM duty cycle of the voltage at the output PWM Const inversely proportional to battery level.

Each of the outputs F1, F2 and Vanity is "anded" with the output PWM Const so that only that lamp whose output from the controller **30** is enabled will illuminate. It will be observed that in contrast to the general lamps, the reading and vanity lamps are not ramped up but are switched on immediately to the specified constant PWM duty cycle. This reduces the amount of software control that would have been required to produce three independent PWM signals.

It will be recognised that the conditions under which the any of the lamps connected to the RCM **42** are switched on and off can be customised by programming the UCM controller **22**. For example, the controller **22** could be programmed to ignore the opening of a door or the switching on of one of the switches FL, Gen or FR if it determined that the ambient light level were sufficiently high not to warrant turning on the corresponding lamp. The voltage at the junctions of the resistors RA, RG, RB which control the electro-optic cell **28** could be used for determining ambient light level for this purpose, or as in the present embodiment the ambient light level can be determined by the UCM controller **22** across the CAN bus from a separate light sensor.

The RCM **42** is also connected to a climate control unit **53** comprising a fan and a thermistor (not shown). Power is supplied to the fan from the RCM **42**. A Fan output of the controller **30** is connected to an input of the driver SW2. The corresponding output of the driver SW2 is connected to a pin FAN on a connector CN4. The thermistor has two terminals connected directly to respective pins THS, TLS on the connector CN4. These pins are connected to respective pins on the connector CN3 which are in turn connected via the vehicle harness to respective pins on the UCM connector CN0. The differential signal is passed through conditioning circuitry **27** and connected to an analog input Temp of the UCM controller **22**. The temperature of the vehicle cabin can thus be relayed by the UCM controller to any other nodes across the network.

For example, if the temperature of the cabin rose to dangerous levels while the vehicle were stationary and, if the presence of a person in the vehicle were detected by a seat occupancy detector (see below), the sun-roof could be instructed to open slightly by the SRCM. Similarly, if a rain sensor (see below) indicates rain, the SRCM may not open the sun-roof.

The UCM controller **22** also controls the remote keyless entry RKE unit **20** which is also mounted within the mirror housing **12**. The UCM **40** is connected to the RKE unit **20** via a multi pin connector CN5. Among other signals, 5 V power is supplied to the RKE unit **20** from the RKE Power

output pin on the controller **22** via one connector pin and data is returned by the RKE unit **20** to the RKE Data input pin on the controller **22** via the second connector pin.

It will be seen that it is not desirable for all of the vehicle electronics to be drawing battery power while the vehicle is stationary without its engine running for more than a pre-determined time. The CAN nodes of the network therefore enters a low power sleep mode.

In the present embodiment, a wake up timer has a frequency approximately 3 Hz and is connected to an input pin of the UCM controller **22**. When interrupted, the controller **22** interrogates the RKE unit **20** to determine if the vehicle is to be entered legitimately. During at least one of these interrupts, the controller **22** also sends a message to the SCM via LSB to tell the siren that the network is functioning normally and that an alarm is not to sound.

Battery power to the slave nodes RCM **42** and SRCM **44** as well as a mass motion sensor unit (MMS) is switched by the UCM **40**. An RCM power output pin (RCM Power O/P) is connected to an input channel of a quad high side driver SW0 on the UCM PCB. A signal on this pin connects the battery voltage Vbb to a line RES which connects to the connector CN3 on the RCM PCB via the connector CN0 on the UCM PCB. The RES signal is in turn channelled by the connector CN3 to the SRCM **44** on line SSS. Thus, when in sleep mode the UCM **40** can remove power from the RCM and SRCM slave nodes in the master-slave network.

An Alarm output of the UCM controller is independently connected to an input of the driver SW0. A corresponding output pin of the driver is connected to a pin (Alarm Power) on the connector CN0 which is connected via the vehicle harness to the MMS. Thus, the UCM **40** can remove power from the MMS when the vehicle has been legitimately entered, so that the ADA signal is not asserted.

The MMS supplies a sensor output signal ADA to the UCM controller **22** via a mass motion sensor interface (MMS I/F). The UCM controller **22** is therefore able to determine whether an alarm should sound. It should be understood that the ADA signal will be active as soon as someone enters the vehicle illegally.

The mirror housing **12** also includes seat belt warning lamps **15**, FIG. 3. These lamps are connected in series to the collector of a transistor Q2 whose base is connected to an output pin of the controller **22**. In the present embodiment, when the vehicle ignition is turned on, the UCM controller **22** flashes the seat belt warning lamps **15** for a pre-determined time or until the UCM is instructed over the CAN bus to stop. The lamps are displayed prominently on the mirror housing **12** where they are sure to be noticed by any occupants of the vehicle.

In a typical CAN network, vehicle parameter values are usually calculated at one node. If another node wishes to determine the value of the parameter, it monitors the value across the network. It will be seen, however, that due to the limitation in the number of message identifiers and bandwidth of the network, there is a cost in software in communicating sensor/actuator values across the network. For this reason, it is advantageous to hardwire certain signals within the vehicle control system.

In a second embodiment of the RCM **42**, FIG. 6, the microcontroller **30** is removed, and the roof housing electronics including the lights and switches are controlled directly by the UCM controller **22** across the vehicle harness via hard wire connections. The required changes are described with reference to the RCM **42** only, with changes being made mutatis mutandi to the UCM **40**.

For ease of mounting within the roof housing **16**, the RCM **42** comprises two separate PCB's, PCB A and PCB B,

linked together via a multi-wire cable. In the second embodiment, the three switches FL, Gen and FR of the first embodiment are mounted on PCB A, and their respective outputs are encoded into a two wire output by encoding circuitry 61. The two wire output is connected via a connector CN6 across the multi-wire cable to a connector CN7 on PCB B. The two wires are then further connected via another connector CN8 to the vehicle harness which in turn connects the two wire output to the UCM 40. The two wire output is decoded either by dedicated decoding circuitry or within the UCM controller 22 to determine the status of the switches.

A light output-corresponding to the LED O/P from the controller 30 of the first embodiment is directly connected between the UCM controller 22 and the switches FL, Gen and FR in the second embodiment. The light output is connected via the connectors CN8, CN6 and CN7 and the three wire cable to power the switches as before.

In both the first and second embodiments, placing of the sun-roof switch 32 is optional. In the second embodiment, the switch 32 is connected to the PCB B via multi-wire cable and a connector CN2' corresponding to CN2 of the first embodiment. When placed, the four switch outputs FWD, BWD, Tilt and Auto are further connected to the sun-roof control module SRCM 44 via a connector CN9. This obviates the need for the UCM 40 to communicate the status of the switch 32 to the SRCM 44 as in the first embodiment. In order to illuminate the switch 32, the light output is connected via the connector CN2' to the switch 32 so that, when placed, the sun-roof switch 32 is illuminated with the buttons FL, Gen and FR.

Because the FWD signal from the switch 32 is critical, it is split on the PCB B, and a duplicate signal FWD 2, is connected via the connector CN8 and a separate portion of the vehicle harness to the SRCM 44.

Placing of the fan unit 53 is also optional. In the second embodiment, the unit 53 is connected to the PCB B via a connector CN4' corresponding to CN4 of the first embodiment. The three signals FAN, TLS and THS are connected to the UCM 40 as before.

In the second embodiment, the four lamps GEN1, GEN2, FLL and FRL are controlled directly by the UCM 40. Three pulse width modulated control signals, corresponding to General and the outputs of the gates A1 and A2 of FIG. 4 are generated by the UCM 40 rather than within the RCM, and are connected via the vehicle harness to the connector CN8 from which they are connected to the lamps.

It will be appreciated by those skilled in the art that the invention can be used to control a prismatic mirror rather than an electro-optic mirror as described. Prismatic mirrors are well known in the art and include a prism which can be moved between first and second angular positions providing different degrees of reflectivity as seen by the driver. In the context of the present invention such a prism can be motor driven between its first and second positions, to achieve a variable reflectivity mirror, with control of the motor being effected by the UCM controller 22 in accordance with the signals from the ambient light sense resistors RA, RG and RB. Since prismatic mirrors normally have only two states, PWM would not be necessary in that case and the output from the controller 22 could be a single signal which was either on or off according to the desired angular position of the prism. Alternatively, a prismatic mirror can be manually actuated between two angular positions to give a variable reflectance mirror.

Also, while the invention has been described herein in terms of a CAN network, the invention could alternatively

be implemented in any other suitable network, for example a network conforming to the French standard VAN (Vehicle Area Network) or the US standard J1850, or a purpose designed proprietary network could be used.

It will be further appreciated by those skilled in the art that various other vehicle components and systems may be associated with the vehicle control system and/or rearview mirror as described herein. For example, a battery level indicator, various lighting systems, vehicle type indicators, blind spot warning data, GPS antenna and directional information, intelligent vehicle highway system information, safety warning system information, rain sensor information provided by windshield contacting or non-contacting sensors, compass information for example from flux gate, magneto inductive or magneto resistive compasses, temperature information, trainable or universal garage door opening systems, vehicle seat positioning and occupancy detection systems, intrusion detection systems, cellular telephone and pager systems, emergency rescue systems, sun-roof (which could be electro-optic) control system and memory storage of various functions and data applicable to the above in addition to any other desirable vehicular information.

It will also be seen that the vehicle control system can be used to control one or more outside electro-optic, for example, electrochromic mirrors (not shown). This can be achieved by hardwiring the UCM 40 to the or each outside mirror, similar to the way in which the vanity lights are connected to the RCM 42; or by connecting the UCM via the bus LSB to one or more slave outside mirror controllers (not shown) which control the or each outside mirror; or by connecting the UCM via the CAN bus to a another CAN node for controlling the or each outside mirror.

The invention is not limited to the embodiments described herein which may be modified or varied without departing from the scope of the invention.

What is claimed is:

1. A vehicle rearview mirror system suitable for use in a vehicle comprising:

an interior rearview mirror assembly including an interior electro-optic reflective element, said interior electro-optic reflective element having an electrically variable reflectivity;

at least one exterior rearview mirror assembly including at least one exterior electro-optic reflective element, said at least one exterior electro-optic reflective element having an electrically variable reflectivity; and

a control, said control at least controlling a reflectivity level of said interior electro-optic reflective element in accordance with a duty cycle of a pulse width modulated signal, said control determining a reflectivity level of said at least one exterior electro-optic reflective element via a bus system of the vehicle.

2. The vehicle rearview mirror system of claim 1, wherein said bus system comprises a controller area network.

3. The vehicle rearview mirror system of claim 1, wherein said at least one exterior rearview mirror assembly comprises at least one exterior electrochromic rearview mirror assembly.

4. The vehicle rearview mirror system of claim 3, wherein said control is operable to control the reflectivity of said interior electro-optic reflective element and to determine the reflectivity level of said at least one exterior electro-optic reflective element via said bus system.

5. The vehicle rearview mirror system of claim 1, wherein the reflectivity of said interior electro-optic rearview mirror assembly is varied under software control according to a selected value of at least one parameter.

11

6. The vehicle rearview mirror system of claim 5, wherein said control is operable to control the reflectivity of said interior electro-optic rearview mirror assembly according to the state of at least one ambient light sensor.

7. The vehicle rearview mirror system of claim 1, wherein said pulse width modulated signal comprises a digital pulse width modulated signal.

8. The vehicle rearview mirror system of claim 1, wherein said pulse width modulated signal is smoothed to provide a substantially constant voltage signal which is applied to said interior electro-optic reflective element.

9. The vehicle rearview mirror system of claim 1 including an interior lamp of the vehicle, said control being further operable to control a brightness level of said interior lamp in accordance with a duty cycle of a second pulse width modulated signal generated by said control.

10. The vehicle rearview mirror system of claim 1, wherein said pulse width modulated signal is modulated to have an on/off duty cycle between 0 and 100 percent.

11. The vehicle rearview mirror system of claim 10 further including a capacitor operable to smooth pulse width modulated signals having a duty cycle less than 100 percent to a substantially constant voltage in proportion to said duty cycle.

12. The vehicle rearview mirror system of claim 11, wherein said substantially constant voltage is between approximately 0 and 1.4 volts.

13. The vehicle rearview mirror system of claim 1, wherein said control is adapted to connect to a vehicle control network which is operable to control a plurality of accessories of the vehicle, said control encompassing a node of said vehicle control network, said control being operable to at least one of receive signals from and transmit signals to at least one of said accessories via said vehicle control network.

14. The vehicle rearview mirror system of claim 13, wherein said vehicle control network comprises a controller area network and wherein said vehicle control network node comprises a controller area network control node.

15. The vehicle rearview mirror system of claim 1, wherein said control is positioned within a housing of an interior rearview mirror assembly and is further adapted to connect to a second control located exterior to the mirror housing, said control in the mirror housing and the second control being in master/slave relationship.

16. A vehicle rearview mirror system comprising:

an interior rearview mirror assembly having a rearview mirror housing and an interior electro-optic reflective element having a variable reflectivity;

a first microcontroller mounted in said interior rearview mirror assembly for controlling the reflectivity of said interior electro-optic reflective element, said interior electro-optic reflective element having its reflectivity controlled in accordance with a duty cycle of a pulse width modulated signal provided by said first microcontroller;

a second microcontroller mounted in the vehicle outside said interior rearview mirror assembly and connected to said first microcontroller; and

at least one accessory of the vehicle, at least one of said first and second microcontrollers encompassing a vehicle control network node of a vehicle control network and being operable to control said at least one accessory via said vehicle control network.

17. The vehicle rearview mirror system of claim 16, wherein said at least one accessory comprises an exterior rearview mirror assembly having an exterior electro-optic reflective element having an electrically variable reflectivity.

12

18. The vehicle rearview mirror system of claim 17, wherein said first microcontroller is connected to at least one of said interior and exterior electro-optic reflective elements via a bus system.

19. The vehicle rearview mirror system of claim 18, wherein said first microcontroller controls the reflectivity of said interior electro-optic reflective element according to the state of at least one ambient light sensor.

20. The vehicle rearview mirror system of claim 16, wherein said first microcontroller controls the reflectivity of said interior electro-optic reflective element according to the state of at least one ambient light sensor.

21. The vehicle rearview mirror system of claim 16, wherein said pulse width modulated signal is smoothed to provide a substantially constant voltage signal which is applied to said interior electro-optic reflective element.

22. The vehicle rearview mirror system of claim 16, wherein the vehicle includes a roof housing positioned on an interior roof of the vehicle, said second microcontroller being mounted in the roof housing.

23. The vehicle rearview mirror system of claim 22, wherein the roof housing contains at least one vehicle interior lamp and said second microcontroller controls the operation of the lamp.

24. The vehicle rearview mirror system of claim 23, wherein the vehicle interior lamp is turned on by said second microcontroller upon opening of a vehicle door, and wherein the power dissipated by the lamp upon said turning on is gradually increased from zero to a maximum which is a function of the vehicle battery voltage.

25. The vehicle rearview mirror system of claim 24, wherein the power dissipated by the lamp is controlled in accordance with a duty cycle of a second pulse width modulated signal generated by said second microcontroller.

26. A vehicle rearview mirror system comprising:

an interior rearview mirror assembly having an interior electro-optic reflective element, said interior electro-optic reflective element having an electrically variable reflectivity;

an exterior rearview mirror assembly having an exterior electro-optic reflective element, said exterior electro-optic reflective element having an electrically variable reflectivity; and

a control, said control at least controlling a reflectivity level of at least one of said interior and exterior electro-optic reflective elements in accordance with a duty cycle of at least one pulse width modulated signal generated by an output circuit of said control, said control determining the reflectivity of the other of said at least one of said interior and exterior electro-optic reflective elements via a bus system.

27. The vehicle rearview mirror system of claim 26, wherein the reflectivity of said at least one of said interior and exterior electro-optic reflective elements is varied under software control according to a selected value of at least one parameter.

28. The vehicle rearview mirror system of claim 27, wherein said control is operable to control the reflectivity of said at least one of said interior and exterior electro-optic reflective elements according to the state of at least one ambient light sensor.

29. The vehicle rearview mirror system of claim 28, wherein said interior and exterior electro-optic reflective elements comprise electrochromic reflective elements and wherein said pulse width modulated signal comprises a digital pulse width modulated signal.

30. The vehicle rearview mirror system of claim 29, wherein said pulse width modulated signal is smoothed to

provide a substantially constant voltage signal which is applied to said at least one of said interior and exterior electrochromic reflective elements.

31. The vehicle rearview mirror system of claim 26, wherein said control is further operable to communicate with at least one accessory of the vehicle.

32. The vehicle rearview mirror system of claim 31, wherein said at least one accessory comprises a lamp of the vehicle, said control controlling a brightness level of said lamp in accordance with a duty cycle of another one of said at least one pulse width modulated signal generated by said control.

33. The vehicle rearview mirror system of claim 32, wherein said lamp comprises an interior rearview mirror lamp positioned at said interior rearview mirror assembly.

34. The vehicle rearview mirror system of claim 26, wherein said control is adapted to connect to a vehicle control network which is operable to control at least one accessory of the vehicle, said control encompassing a control node of said vehicle control network.

35. The vehicle rearview mirror system of claim 34, wherein said at least one accessory is positioned at said interior rearview mirror assembly.

36. The vehicle rearview mirror system of claim 34, wherein said at least one accessory is positioned remote from said interior rearview mirror assembly.

37. The vehicle rearview mirror system of claim 34, wherein said control is operable to communicate with said at least one accessory via said vehicle control network.

38. The vehicle rearview mirror system of claim 34, wherein said at least one accessory comprises at least one of a remote keyless entry accessory, a vehicle sun roof accessory, an alarm accessory, at least one illumination device, a seat belt warning device, a battery level indicator, a vehicle tire indicator, a blind spot warning system, a global positioning system, a safety warning system, a rain sensor, a vehicle compass, a temperature sensor, a garage door opening system, an occupancy detection system, an intrusion detection system, a telephone system, and an emergency rescue system.

39. The vehicle rearview mirror system suitable for use in a vehicle comprising:

- an interior rearview mirror assembly including an exterior electro-optic reflective element, said interior electro-optic reflective element having an electrically variable reflectivity;

- at least one exterior rearview mirror assembly including at least one exterior electro-optic reflective element, said at least one exterior electro-optic reflective element having an electrically variable reflectivity; and

- a control, said control at least controlling a reflectivity level of said interior electro-optic reflective element in accordance with a duty cycle of a pulse width modulated signal, said control being operable to communicate with at least one accessory of the vehicle via a bus system of the vehicle.

40. The vehicle rearview mirror system of claim 39, wherein said at least one accessory comprises at least one of a remote keyless entry accessory, a vehicle sun roof accessory, an alarm accessory, at least one illumination device, a seat belt warning device, a battery level indicator, a vehicle tire indicator, a blind spot warning system, a global positioning system, a safety warning system, a rain sensor, a vehicle compass, a temperature sensor, a garage door opening system, an occupancy detection system, an intrusion detection system, a telephone system, and an emergency rescue system.

41. The vehicle rearview mirror system of claim 39, wherein said bus system comprises a controller area network.

42. The vehicle rearview mirror system of claim 39, wherein said at least one exterior rearview mirror assembly comprises at least one exterior electrochromic rearview mirror assembly.

43. The vehicle rearview mirror system of claim 39, wherein said control is operable to control the reflectivity of said interior electro-optic reflective element and to determine the reflectivity of said at least one exterior electro-optic reflective element via said bus system.

44. The vehicle rearview mirror system of claim 39, wherein the reflectivity of said interior electro-optic rearview mirror assembly is varied under software control according to a selected value of at least one parameter.

45. The vehicle rearview mirror system of claim 44, wherein said control is operable to control the reflectivity of said interior electro-optic rearview mirror assembly according to the state of at least one ambient light sensor.

46. The vehicle rearview mirror system of claim 39, wherein said pulse width modulated signal comprises a digital pulse width modulated signal.

47. The vehicle rearview mirror system of claim 39, wherein said pulse width modulated signal is smoothed to provide a substantially constant voltage signal which is applied to said interior electro-optic reflective element.

48. The vehicle rearview mirror system of claim 39 including an interior lamp of the vehicle, said control being further operable to control a brightness level of said interior lamp in accordance with a duty cycle of a second pulse width modulated signal generated by said control.

49. The vehicle rearview mirror system of claim 39, wherein said control is adapted to connect to a vehicle control network which is operable to control said at least one accessory of the vehicle, said control encompassing a control node of said vehicle control network.

50. The vehicle rearview mirror system of claim 49, wherein said at least one accessory is positioned at said interior rearview mirror assembly.

51. The vehicle rearview mirror system of claim 49, wherein said at least one accessory is positioned remote from said interior rearview mirror assembly.

52. The vehicle rearview mirror system of claim 49, wherein said control is operable to communicate with said at least one accessory via said vehicle control network.

53. A vehicle rearview mirror system suitable for use in a vehicle comprising:

- an interior rearview mirror assembly including an interior electro-optic reflective element, said interior electro-optic reflective element having an electrically variable reflectivity;

- at least one exterior rearview mirror assembly including at least one exterior electro-optic reflective element, said at least one exterior electro-optic reflective element having an electrically variable reflectivity;

- a first control, said first control at least controlling a reflectivity level of said interior electro-optic reflective element;

- a second control, said second control at least controlling a reflectivity level of said at least one exterior electro-optic reflective element; and

- wherein said first control determines a reflectivity level of said at least one exterior electro-optic reflective element by communication with said second control via a bus system of the vehicle.

54. The vehicle rearview mirror system of claim 53, wherein said bus system comprises a controller area network.

55. The vehicle rearview mirror system of claim 53, wherein said at least one exterior rearview mirror assembly comprises at least one exterior electrochromic rearview mirror assembly.

56. The vehicle rearview mirror system of claim 53, wherein the reflectivity of said interior electro-optic reflective element is varied under software control according to a selected value of at least one parameter.

57. The vehicle rearview mirror system of claim 56, wherein said first control is operable to control the reflectivity of said interior electro-optic reflective element according to the state of at least one ambient light sensor.

58. The vehicle rearview mirror system of claim 57, wherein said second control is operable to control the reflectivity of said at least one exterior electro-optic reflective element according to the state of at least one ambient light sensor.

59. The vehicle rearview mirror system of claim 53, wherein said first control controls the reflectivity level of said interior electro-optic reflective element in accordance with a duty cycle of a pulse width modulated signal generated by said first control.

60. The vehicle rearview mirror system of claim 53, wherein said second control controls the reflectivity level of said at least one exterior electro-optic reflective element in accordance with a duty cycle of a pulse width modulated signal generated by said second control.

61. The vehicle rearview mirror system of claim 53, wherein at least one of said first and second controls controls the reflectivity level of at least one of said interior and at least one exterior electro-optic reflective elements, respectively, in accordance with a duty cycle of at least one pulse width modulated signal generated by said at least one of said first and second controls.

62. The vehicle rearview mirror system of claim 61, wherein said at least one pulse width modulated signal comprises at least one digital pulse width modulated signal.

63. The vehicle rearview mirror system of claim 61, wherein said at least one pulse width modulated signal is smoothed to provide a substantially constant voltage signal which is applied to said at least one of said interior and at least one exterior electro-optic reflective elements.

64. The vehicle rearview mirror system of claim 53 including an interior lamp of the vehicle, one of said first and second controls being further operable to control a brightness level of said interior lamp in accordance with a duty cycle of a pulse width modulated signal generated by said one of said first and second controls.

65. The vehicle rearview mirror system of claim 53, wherein said first and second controls are adapted to connect to a vehicle control network which is operable to control at least one accessory of the vehicle, at least one of said first and second controls encompassing at least one control node of said vehicle control network.

66. The vehicle rearview mirror system of claim 65, wherein said at least one accessory is positioned at said interior rearview mirror assembly.

67. The vehicle rearview mirror system of claim 65, wherein said at least one accessory is positioned remote from said interior rearview mirror assembly.

68. The vehicle rearview mirror system of claim 65, wherein said at least one accessory comprises at least one of a remote keyless entry accessory, a vehicle sun roof accessory, an alarm accessory, at least one illumination

device, a seat belt warning device, a battery level indicator, a vehicle tire indicator, a blind spot warning system, a global positioning system, a safety warning system, a rain sensor, a vehicle compass, a temperature sensor, a garage door opening system, an occupancy detection system, an intrusion detection system, a telephone system, and an emergency rescue system.

69. A vehicle rearview mirror system comprising:

an interior rearview mirror assembly having a rearview mirror housing and an interior electro-optic reflective element having a variable reflectivity;

a first control mounted in said interior rearview mirror assembly for controlling the reflectivity of said interior electro-optic element;

a second control mounted in the vehicle outside said interior rearview mirror assembly and connected to said first control via a vehicle bus system; and

at least one accessory of the vehicle, at least one of said first and second controls being operable to control said at least one accessory via said vehicle bus system, wherein said at least one accessory comprises at least one of a remote keyless entry accessory, a vehicle sun roof accessory, an alarm accessory, at least one illumination device, a seat belt warning device, a battery level indicator, a vehicle tire indicator, a blind spot warning system, a global positioning system, a safety warning system, a rain sensor, a vehicle compass, a temperature sensor, a garage door opening system, an occupancy detection system, an intrusion detection system, a telephone system, and an emergency rescue system.

70. The vehicle rearview mirror system of claim 69, wherein said bus system comprises a controller area network.

71. The vehicle rearview mirror system of claim 69 including at least one exterior rearview mirror assembly having at least one exterior electro-optic reflective element, said at least one exterior electro-optic reflective element having an electrically variable reflectivity, one of said first and second controls controlling the reflectivity of said at least one exterior electro-optic reflective element.

72. The vehicle rearview mirror system of claim 71, wherein said one of said first and second controls controlling said at least one exterior electro-optic reflective element in accordance with a duty cycle of a pulse width modulated signal provided by said one of said first and second controls.

73. The vehicle rearview mirror system of claim 69, wherein the reflectivity of said interior electro-optic reflective element is varied under software control according to a selected value of at least one parameter.

74. The vehicle rearview mirror system of claim 73, wherein said first control is operable to control the reflectivity of said interior electro-optic reflective element according to the state of at least one ambient light sensor.

75. The vehicle rearview mirror system of claim 69, wherein said first control controls the reflectivity level of said interior electro-optic reflective element in accordance with a duty cycle of a pulse width modulated signal generated by said first control.

76. The vehicle rearview mirror system of claim 75, wherein said pulse width modulated signal comprises at least one digital pulse width modulated signal.

77. The vehicle rearview mirror system of claim 75, wherein said pulse width modulated signal is smoothed to provide a substantially constant voltage signal which is applied to said interior electro-optic reflective element.

78. The vehicle rearview mirror system of claim 69 including an interior lamp of the vehicle, one of said first and

17

second controls being further operable to control a brightness level of said interior lamp in accordance with a duty cycle of a pulse width modulated signal generated by said one of said first and second controls.

79. The vehicle rearview mirror system of claim 78, 5 wherein said interior lamp comprises an interior rearview mirror lamp positioned at said interior rearview mirror assembly.

18

80. The vehicle rearview mirror system of claim 69, wherein said at least one accessory is positioned at said interior rearview mirror assembly.

81. The vehicle rearview mirror system of claim 69, wherein said at least one accessory is positioned remote from said interior rearview mirror assembly.

* * * * *

UNITED STATES PATENT AND TRADEMARK OFFICE
CERTIFICATE OF CORRECTION

PATENT NO. : 6,515,378 B2
DATED : February 4, 2003
INVENTOR(S) : John P. Drummond et al.

Page 1 of 1

It is certified that error appears in the above-identified patent and that said Letters Patent is hereby corrected as shown below:

Column 5,

Line 5, "procedures" should be -- produces --

Line 9, "**66**" should be -- **68** --

Line 34, "PC**3**" should be -- PCB --

Column 10,


Line 9, "type" should be -- tyre --

Column 13,

Line 43, "exterior" should be -- interior --

Signed and Sealed this

Twenty-seventh Day of April, 2004

A handwritten signature in black ink, reading "Jon W. Dudas". The signature is written in a cursive style with a large, stylized initial "J".

JON W. DUDAS
Acting Director of the United States Patent and Trademark Office