



US005959997A

United States Patent [19]
Moura et al.

[11] **Patent Number:** **5,959,997**
[45] **Date of Patent:** ***Sep. 28, 1999**

- [54] **HYBRID ACCESS SYSTEM WITH AGC CONTROL OF UPSTREAM CHANNEL TRANSMIT POWER**
- [75] Inventors: **Eduardo J. Moura**, San Jose; **Jan Maksymilian Gronski**, Palo Alto; **Robert L. Packer**, Los Gatos; **Robert A. Luxenberg**, Woodside; **Frederick Enns**, Menlo Park, all of Calif.
- [73] Assignee: **Hybrid Networks, Inc.**, Cupertino, Calif.
- [*] Notice: This patent is subject to a terminal disclaimer.
- [21] Appl. No.: **08/697,246**
- [22] Filed: **Aug. 21, 1996**

Related U.S. Application Data

- [62] Division of application No. 08/426,920, Apr. 21, 1995, Pat. No. 5,586,121.
- [51] Int. Cl.⁶ **H04J 3/16**
- [52] U.S. Cl. **370/404; 370/347; 370/396; 370/449**
- [58] Field of Search 370/404, 276, 370/312, 463, 468, 396, 347, 449, 458; 379/202; 455/5.1; 342/463

[56] **References Cited**

U.S. PATENT DOCUMENTS

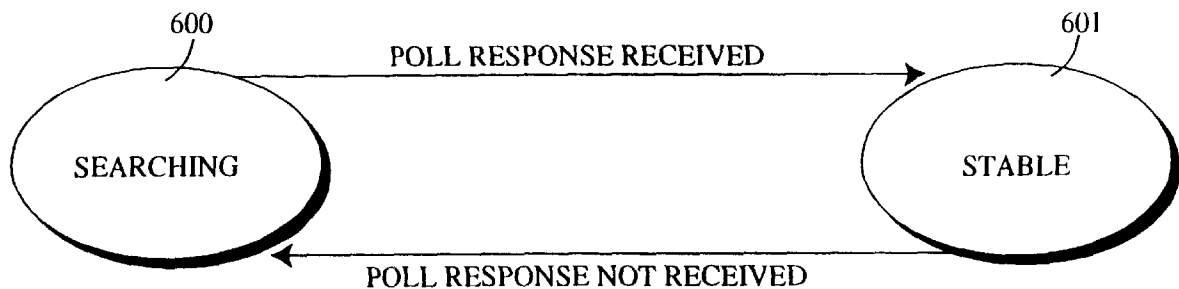
| | | | |
|-----------|---------|----------------|----------|
| 4,894,789 | 1/1990 | Yee | 364/521 |
| 4,987,486 | 1/1991 | Johnson et al. | 358/86 |
| 5,014,125 | 5/1991 | Pocock et al. | 358/86 |
| 5,051,822 | 9/1991 | Rhoades | 358/86 |
| 5,093,718 | 3/1992 | Hoarty et al. | 358/84 |
| 5,357,513 | 10/1994 | Kay et al. | 370/95.3 |
| 5,481,542 | 1/1996 | Logston et al. | 370/94.2 |
| 5,532,702 | 7/1996 | Mintz | 342/463 |
| 5,572,517 | 11/1996 | Safadi | 370/50 |
| 5,586,121 | 12/1996 | Moura et al. | 370/404 |

Primary Examiner—Douglas W. Olms
Assistant Examiner—Shick Hom
Attorney, Agent, or Firm—Farkas & Manelli

[57] **ABSTRACT**

A hybrid access system and method using a hybrid access system point of presence router and a remote link adapter to connect a user computer terminal to a network for fast downstream information transfer by high speed information broadcasting with lower speed upstream information transfer through an independent upstream channel to the hybrid access system point of presence router. High speed downstream information transfer passes through a cable TV headend or a TV transmitter or a cell station.

30 Claims, 20 Drawing Sheets



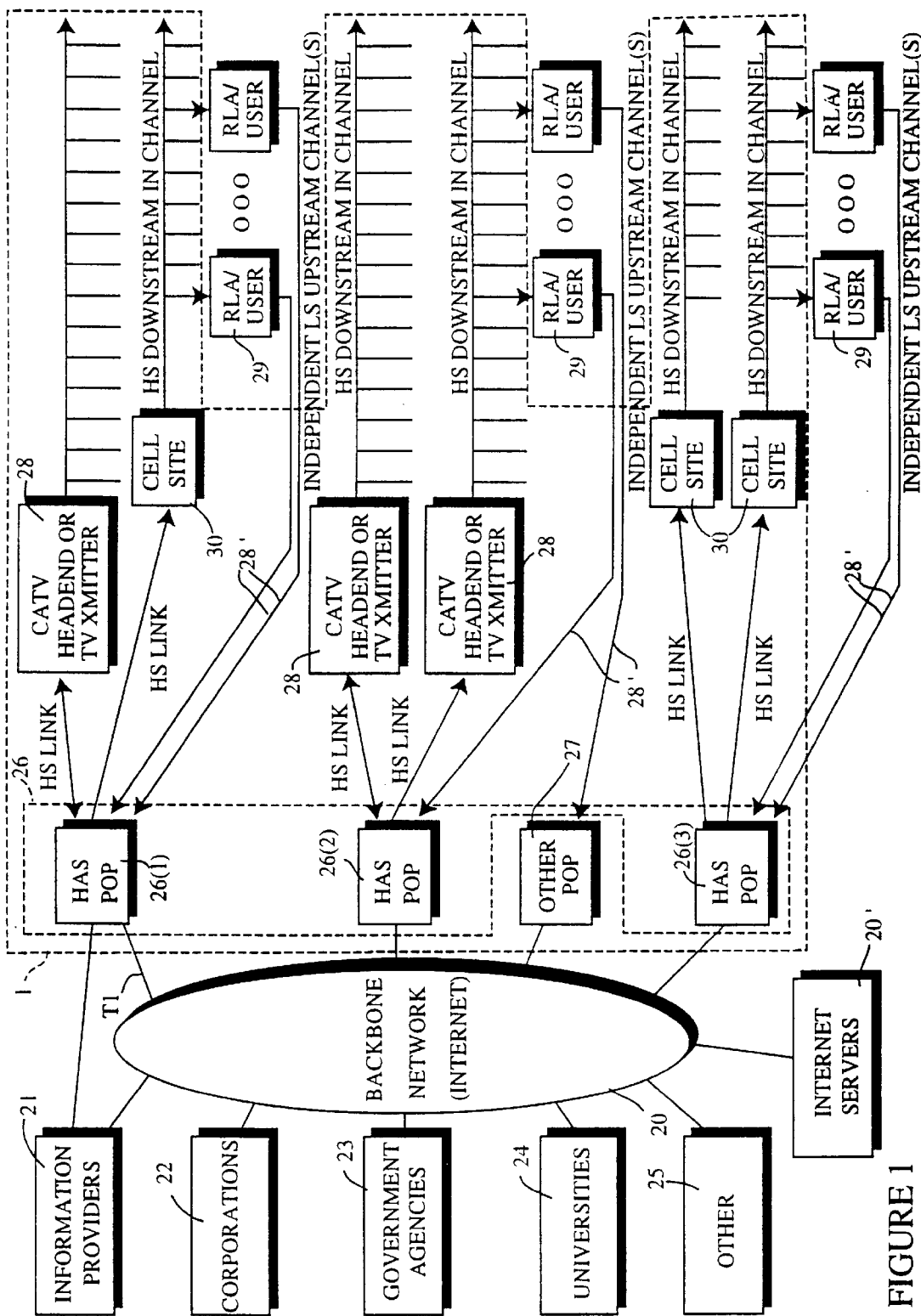


FIGURE 1

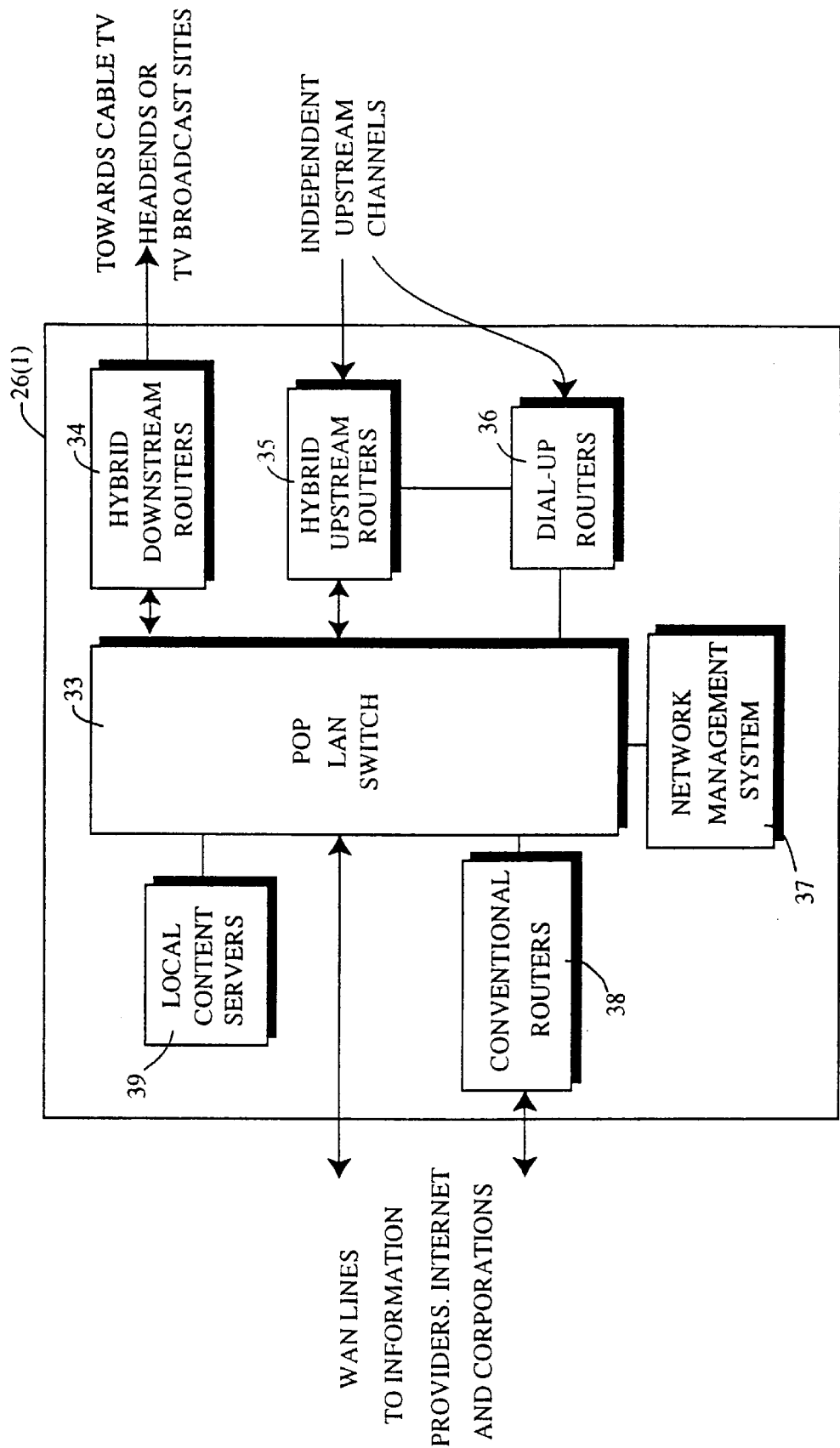


FIGURE 2a

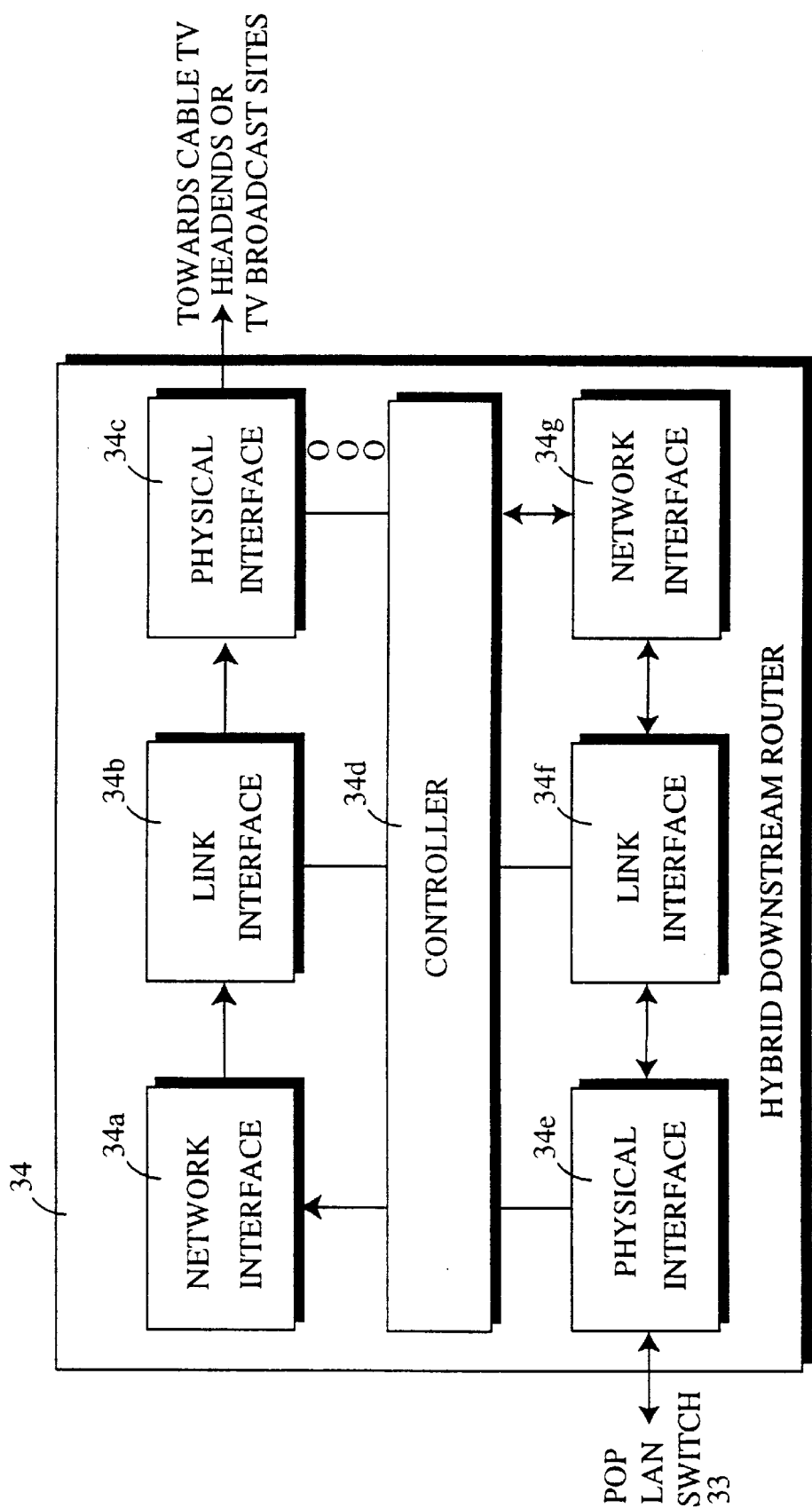


FIGURE 2b

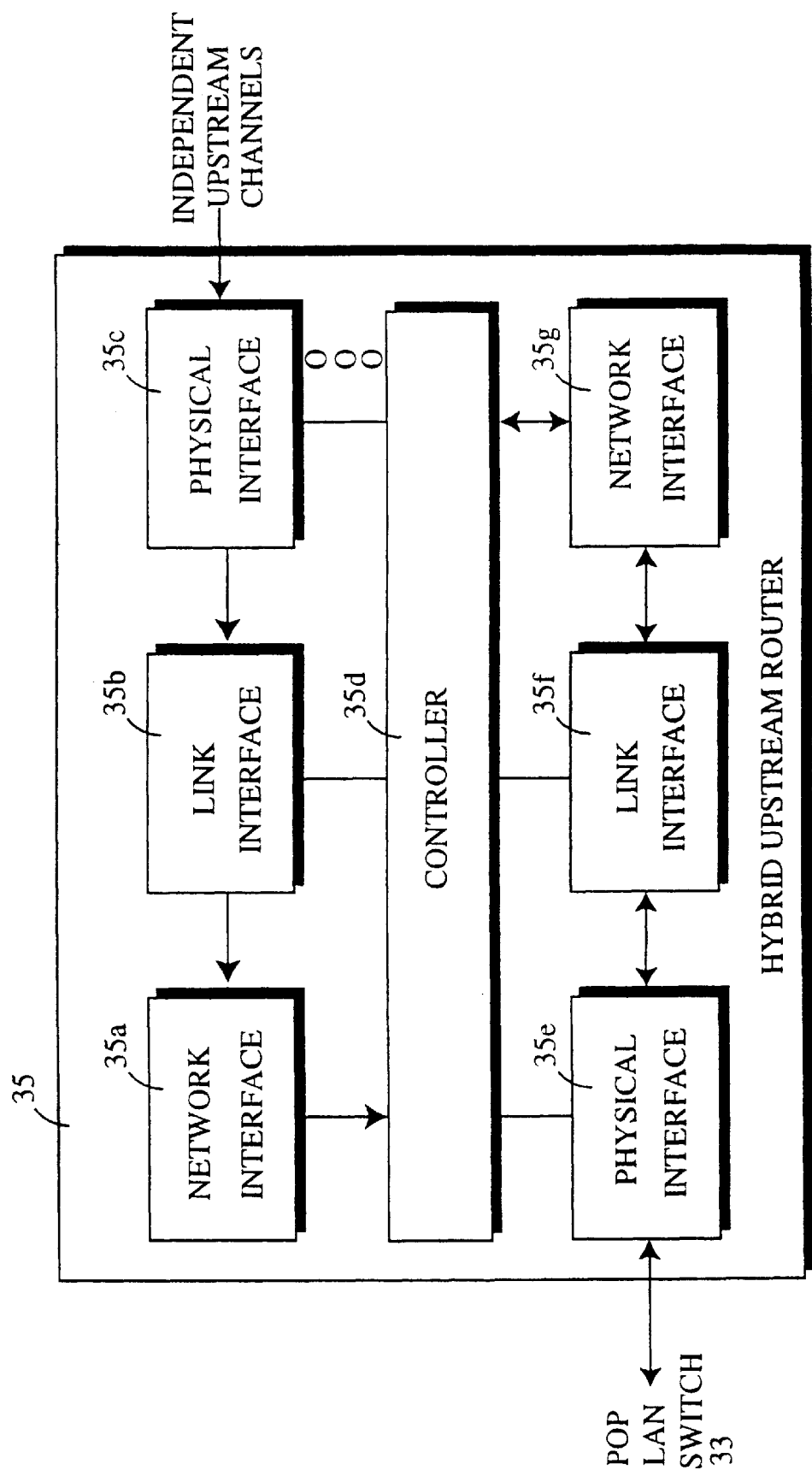
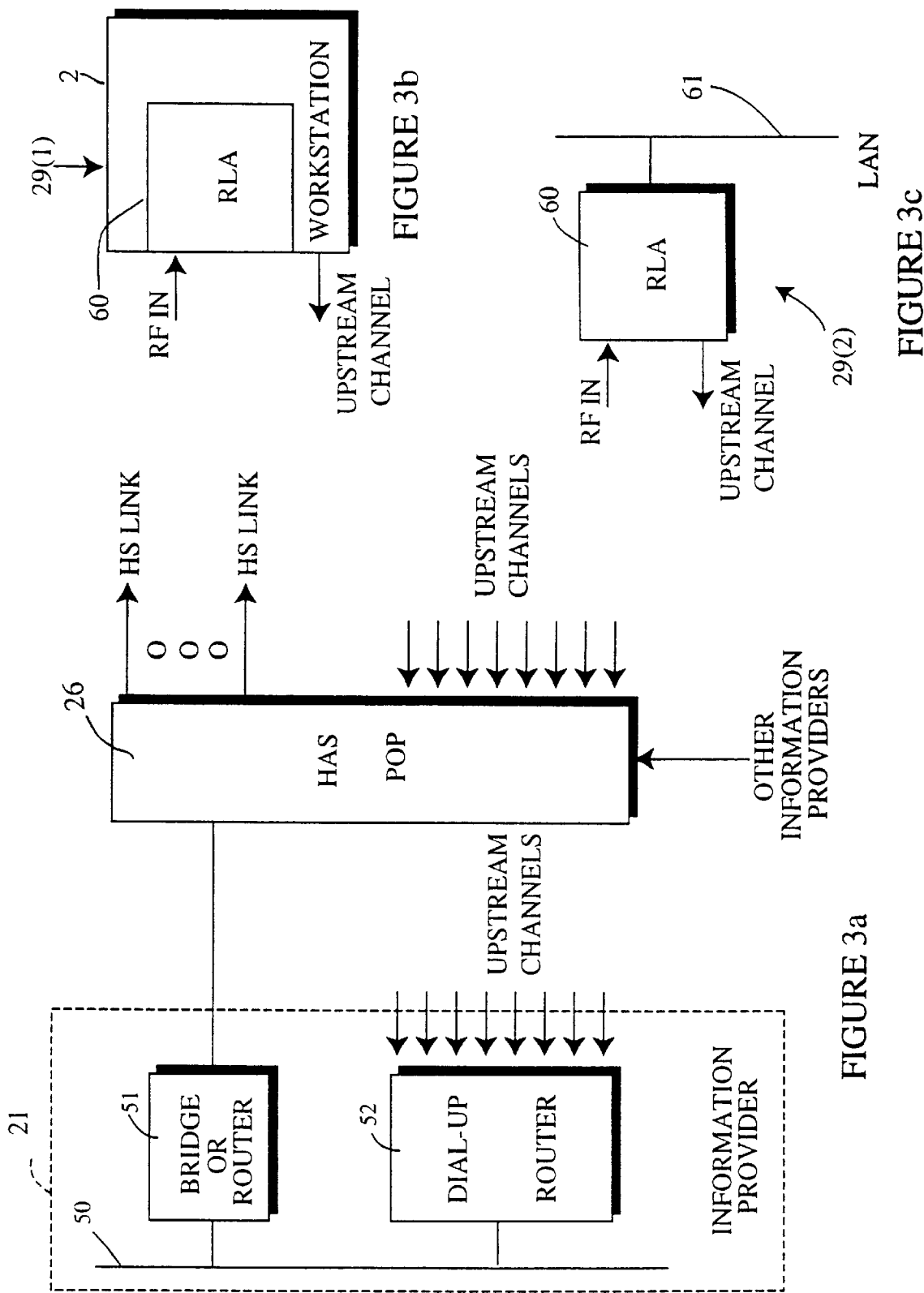


FIGURE 2c



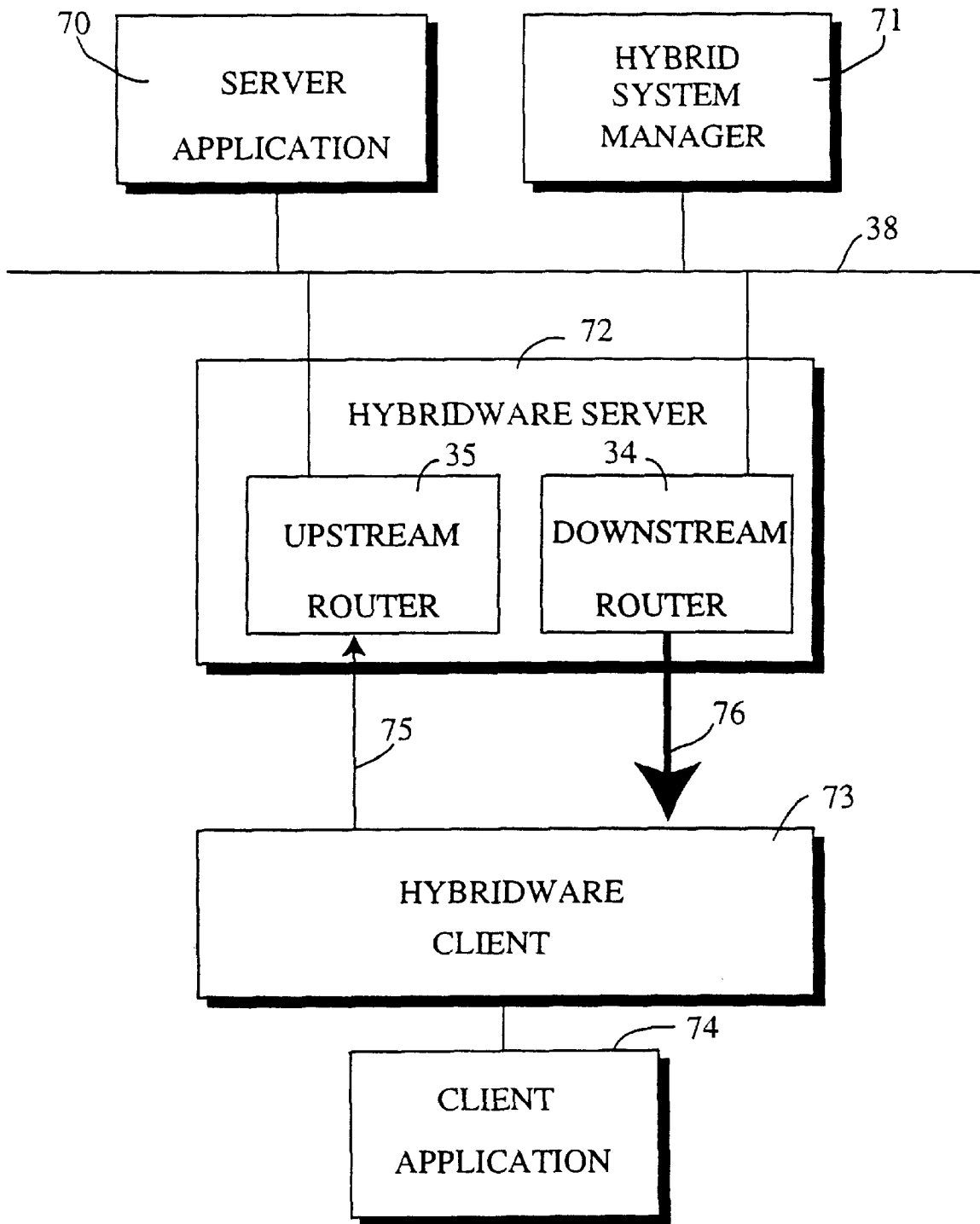


FIGURE 4

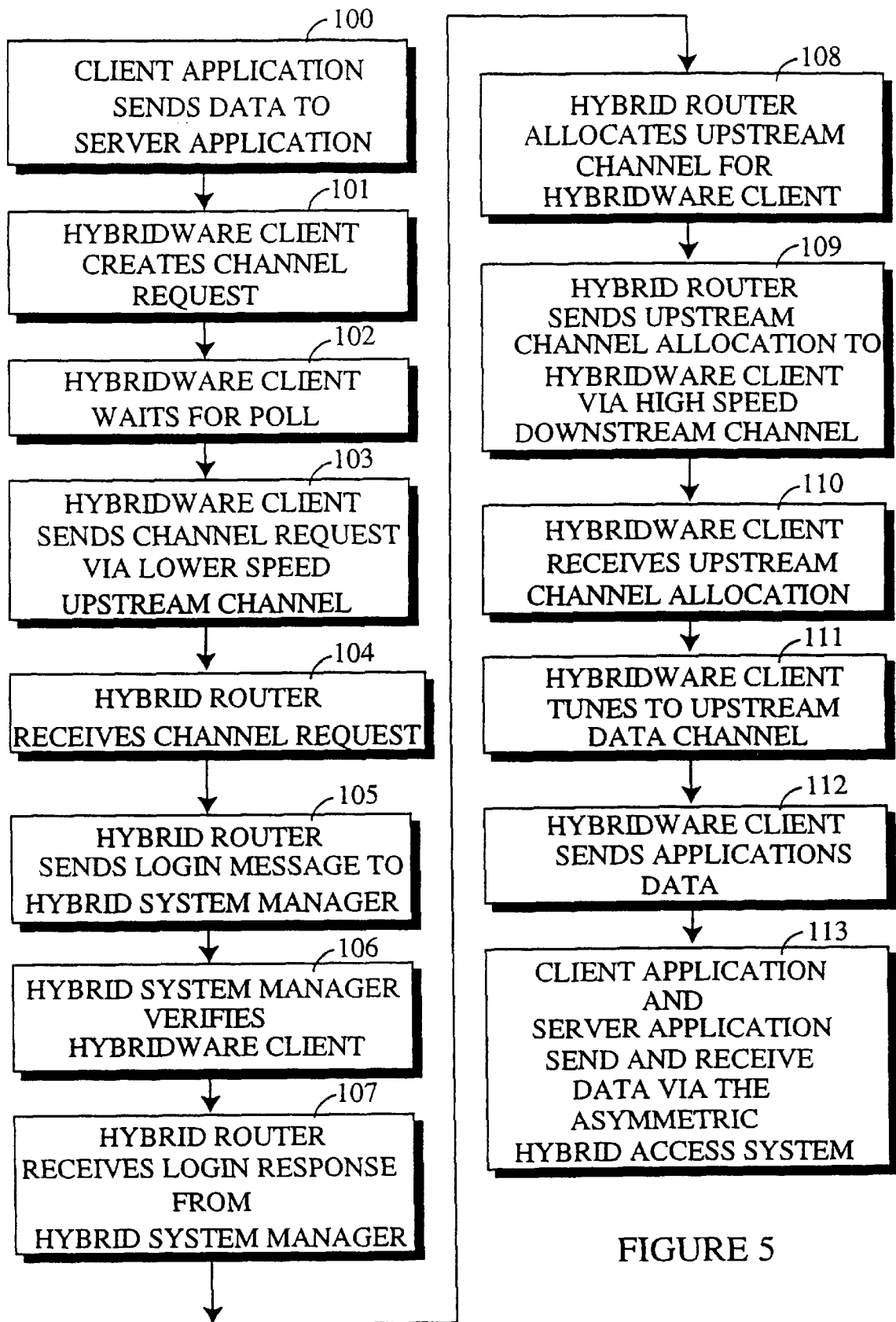


FIGURE 5

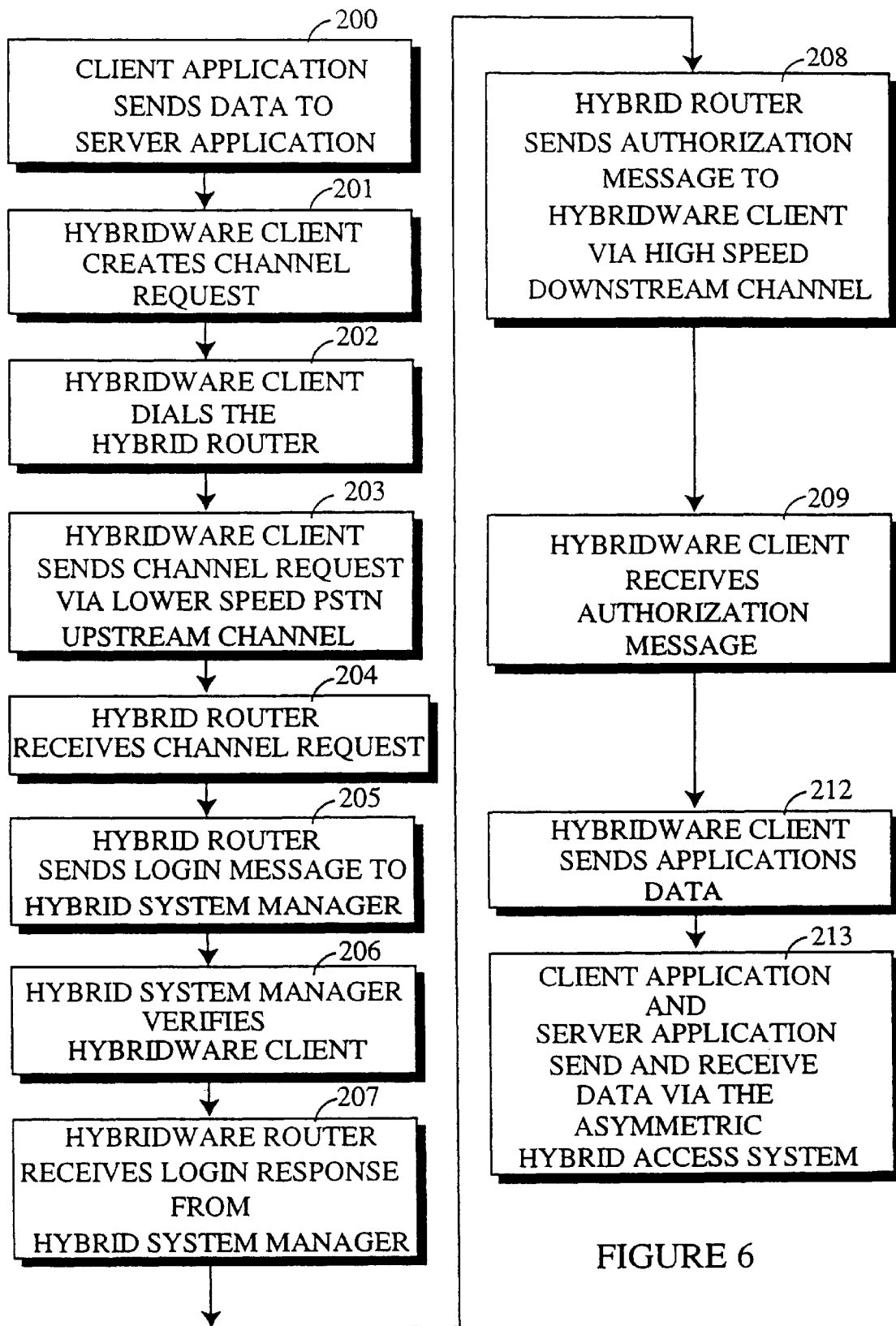


FIGURE 6

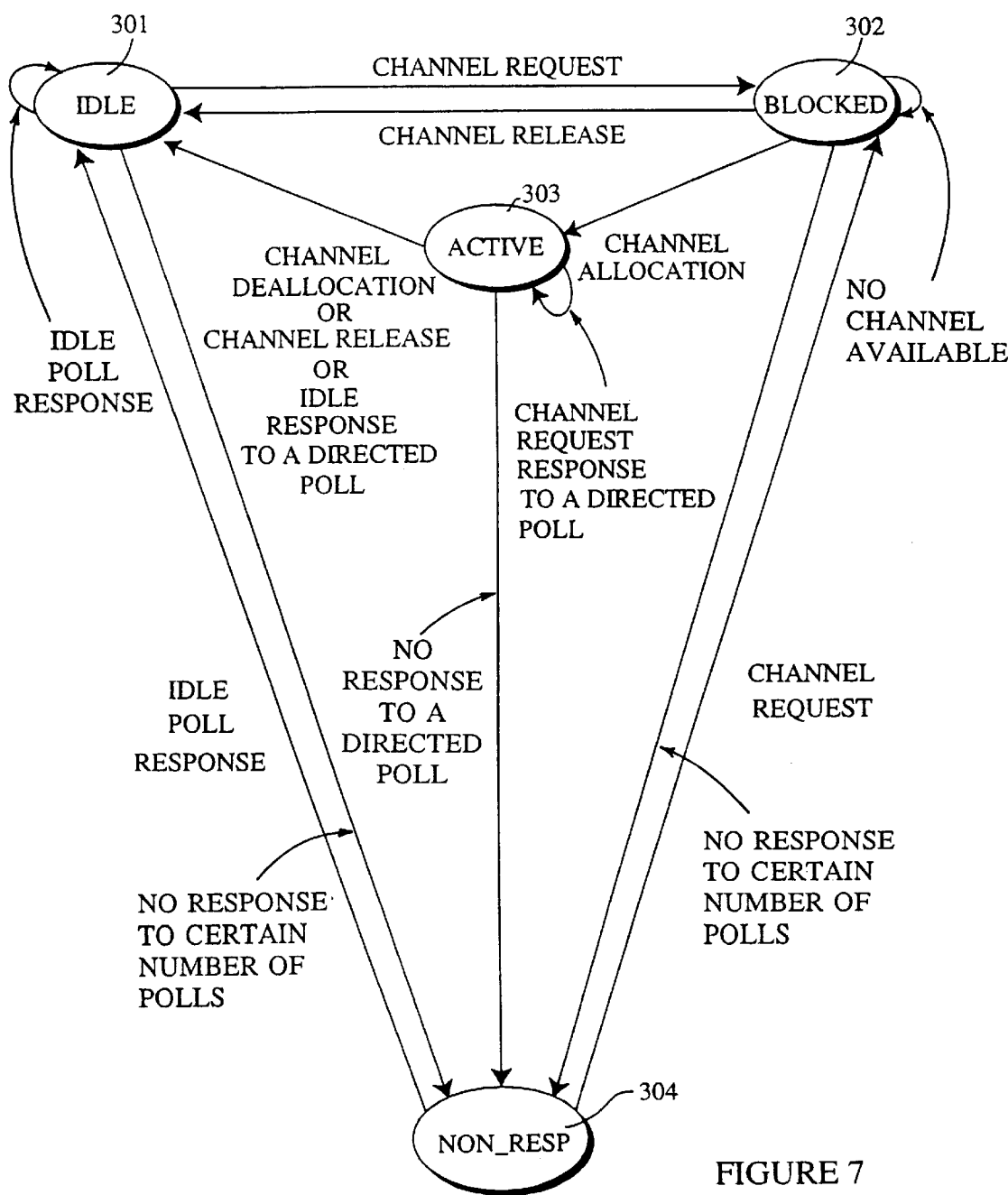


FIGURE 7

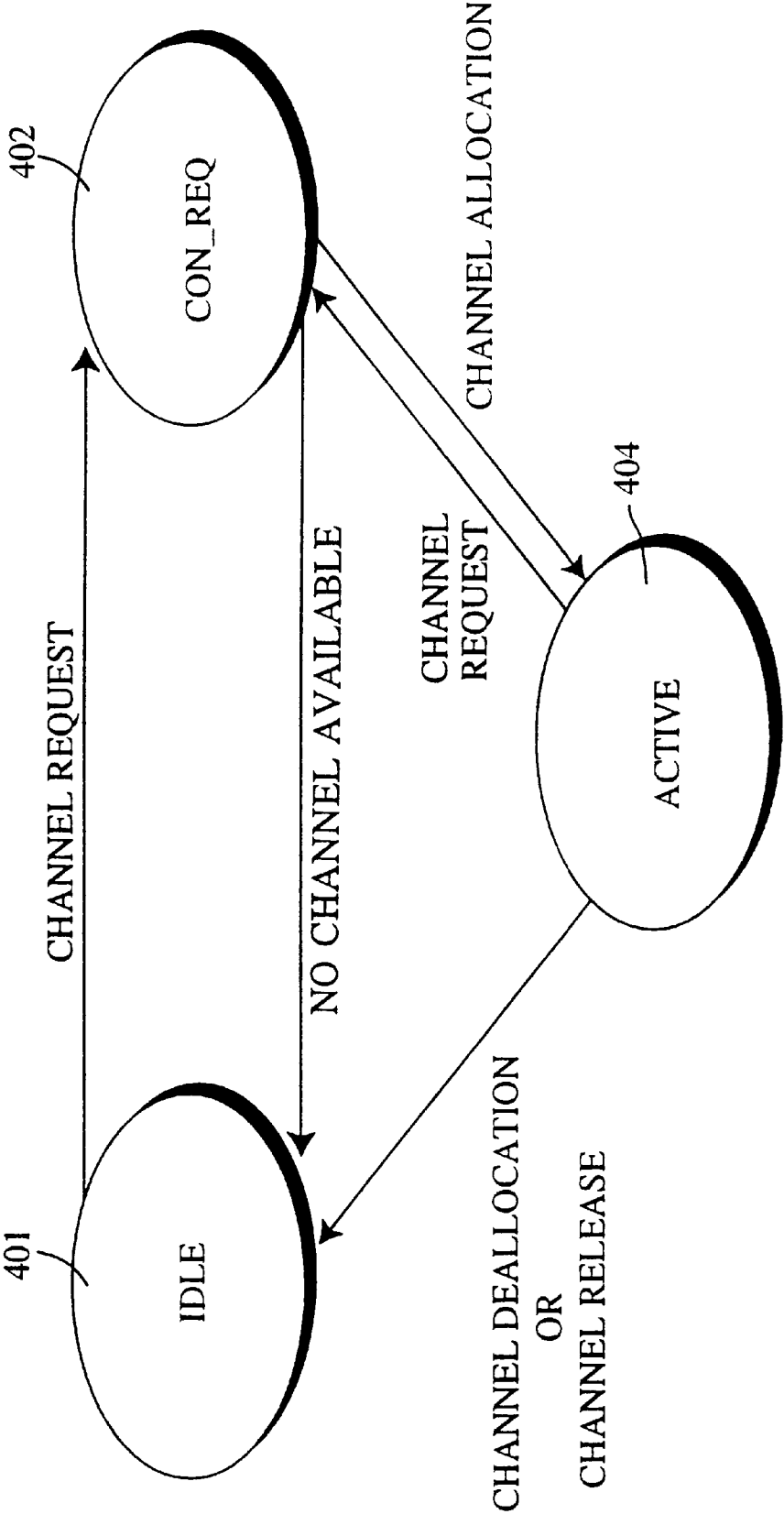


FIGURE 8

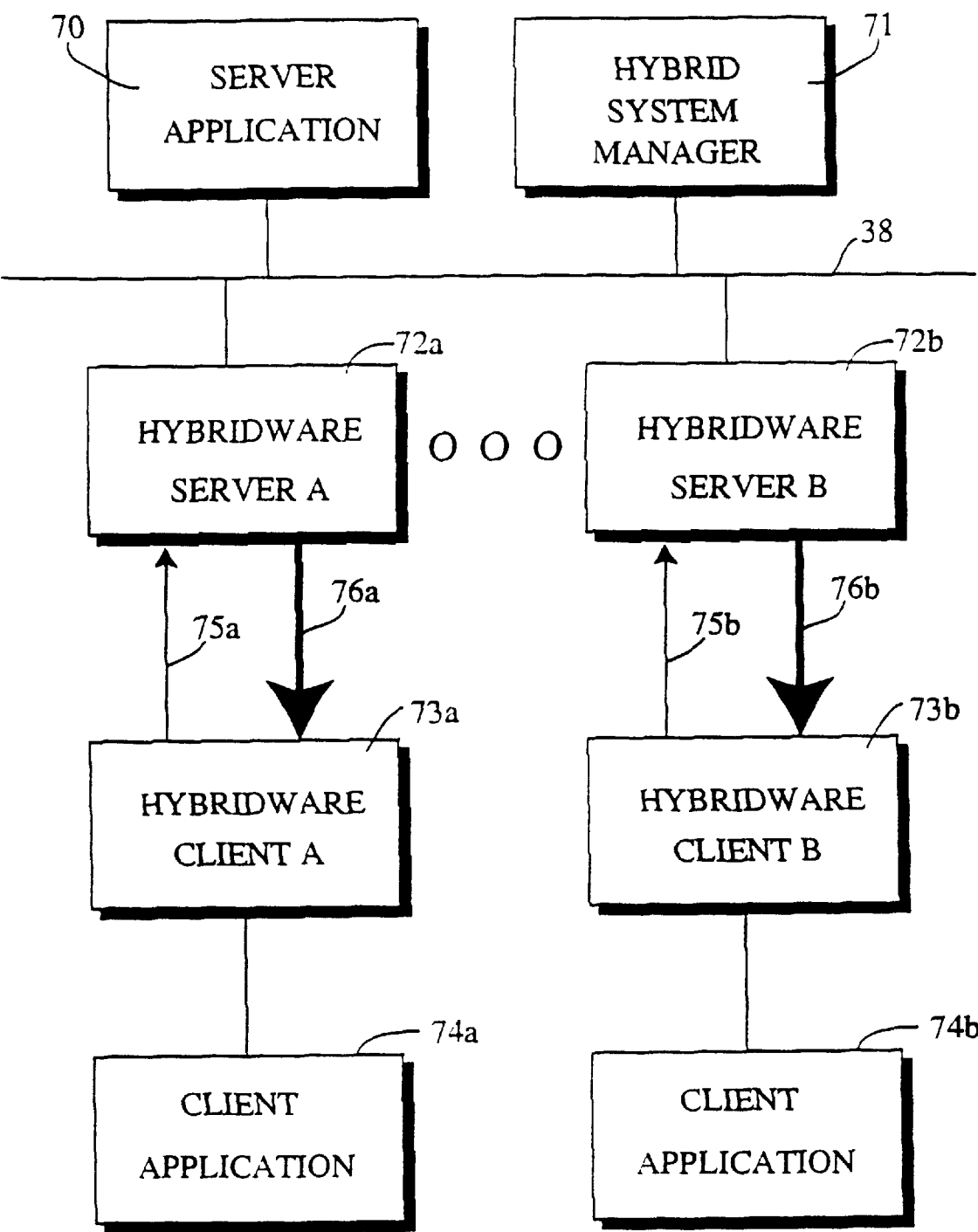


FIGURE 9

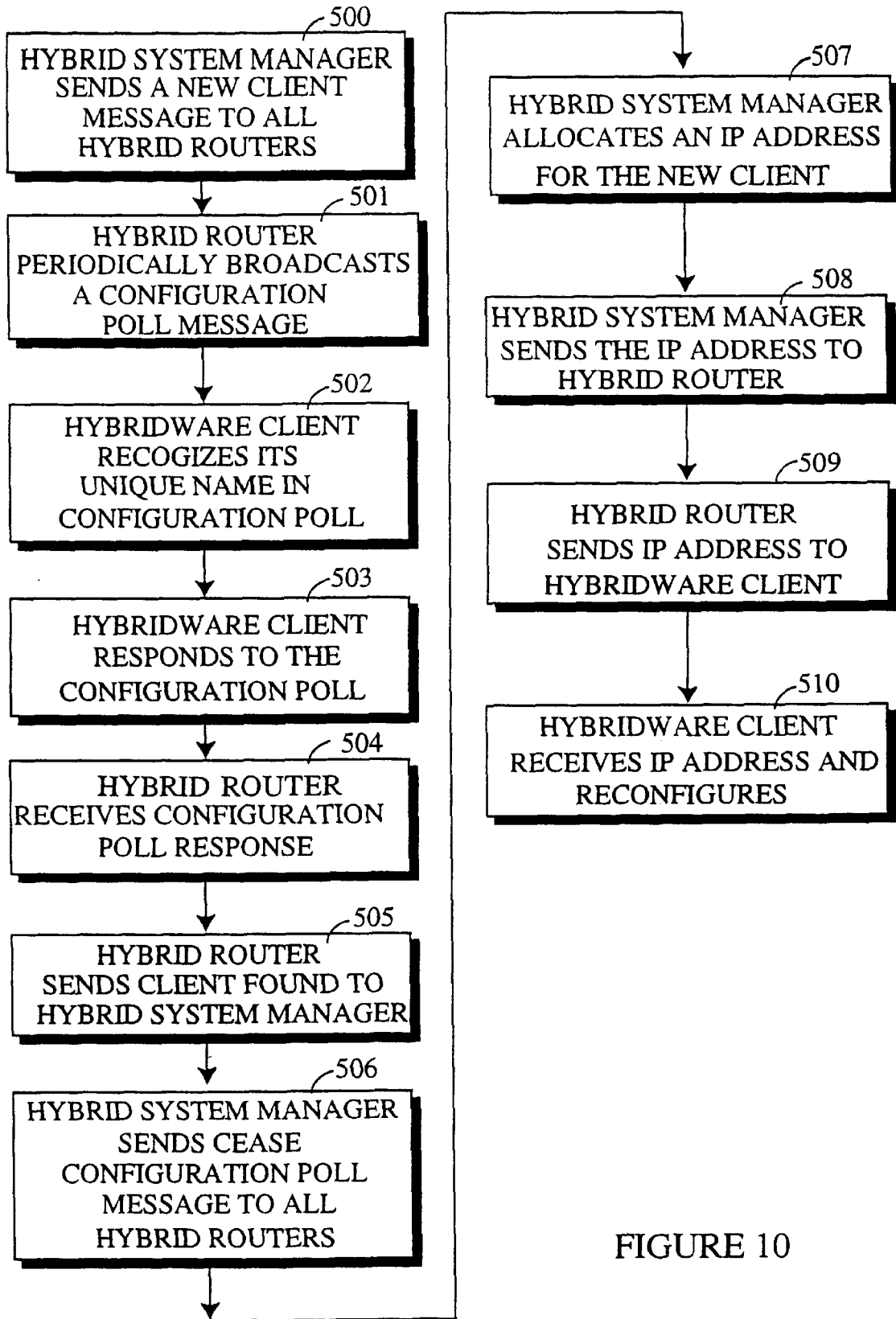


FIGURE 10

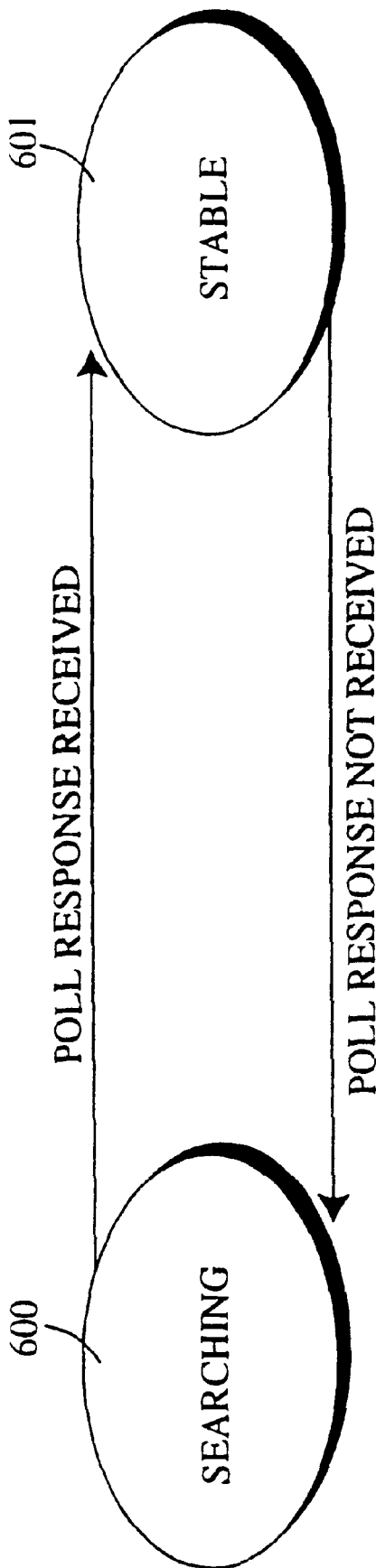


FIGURE 11

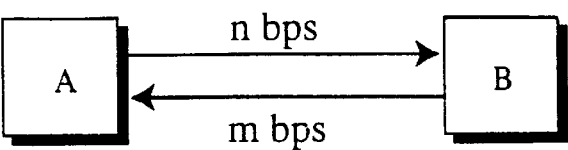


FIGURE 12a
PRIOR ART

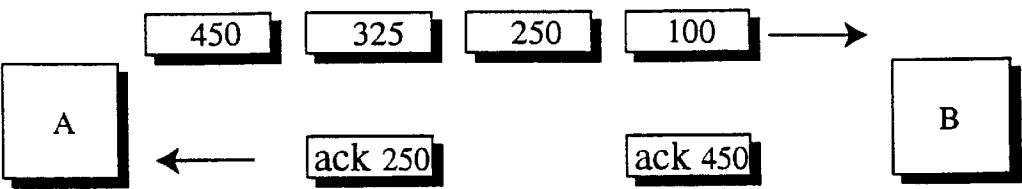


FIGURE 12b
PRIOR ART

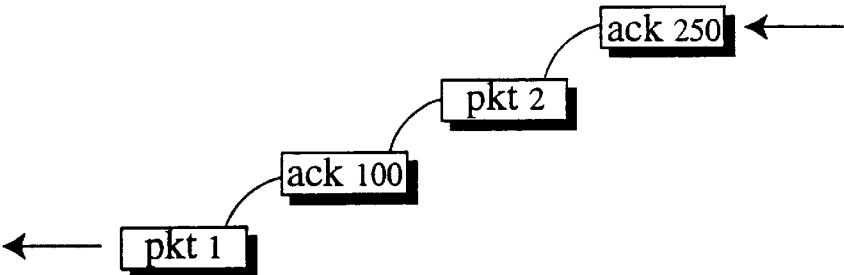


FIGURE 12c

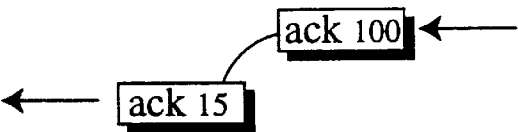


FIGURE 12d

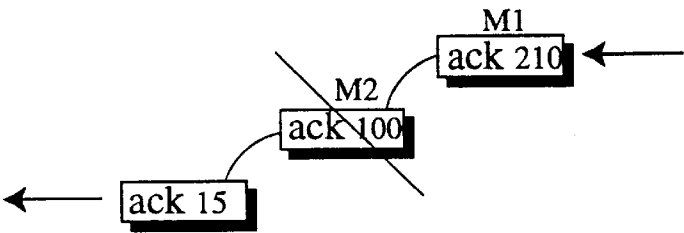


FIGURE 12e

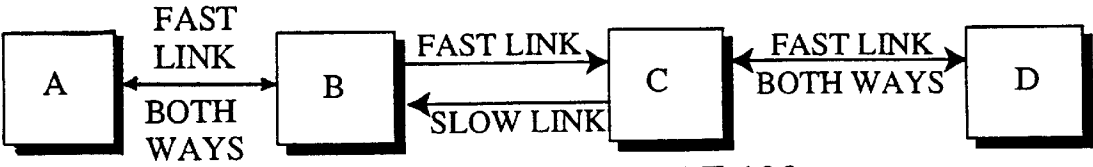


FIGURE 12f

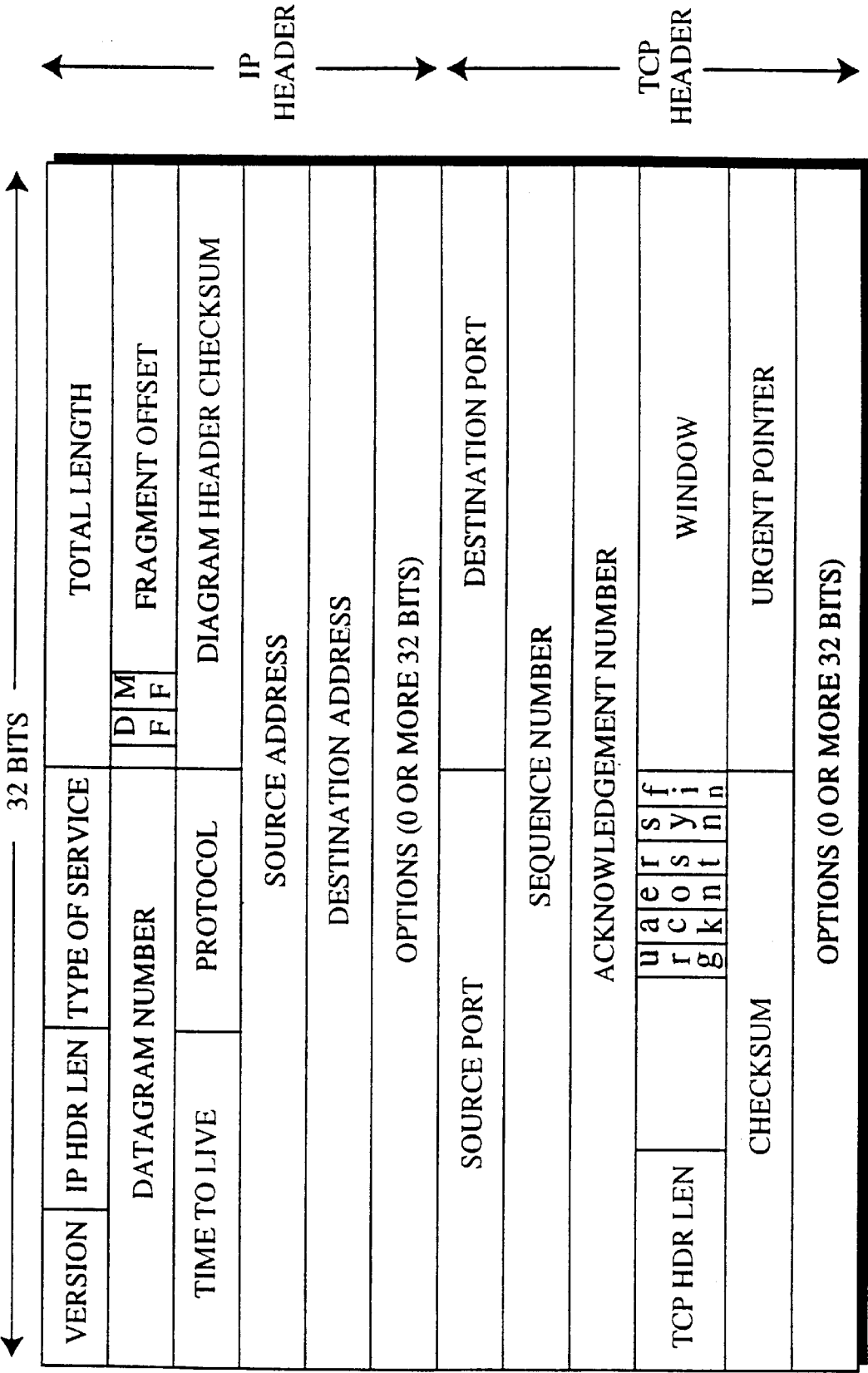
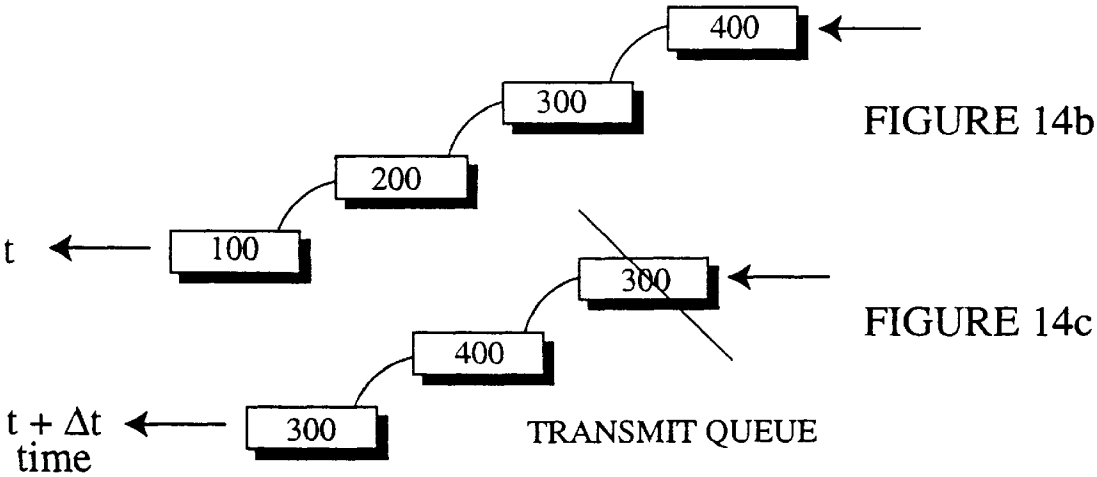
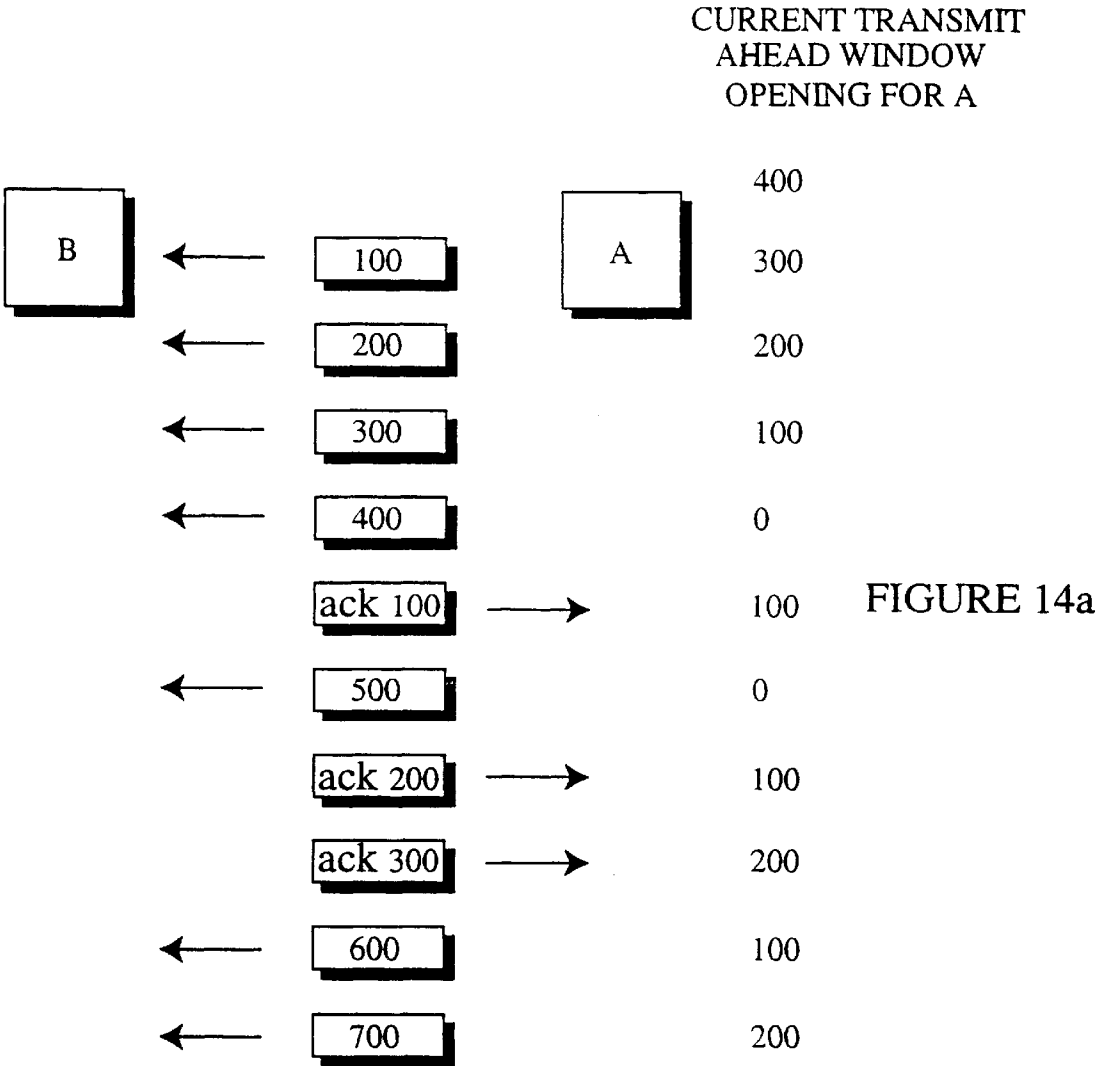


FIGURE 13



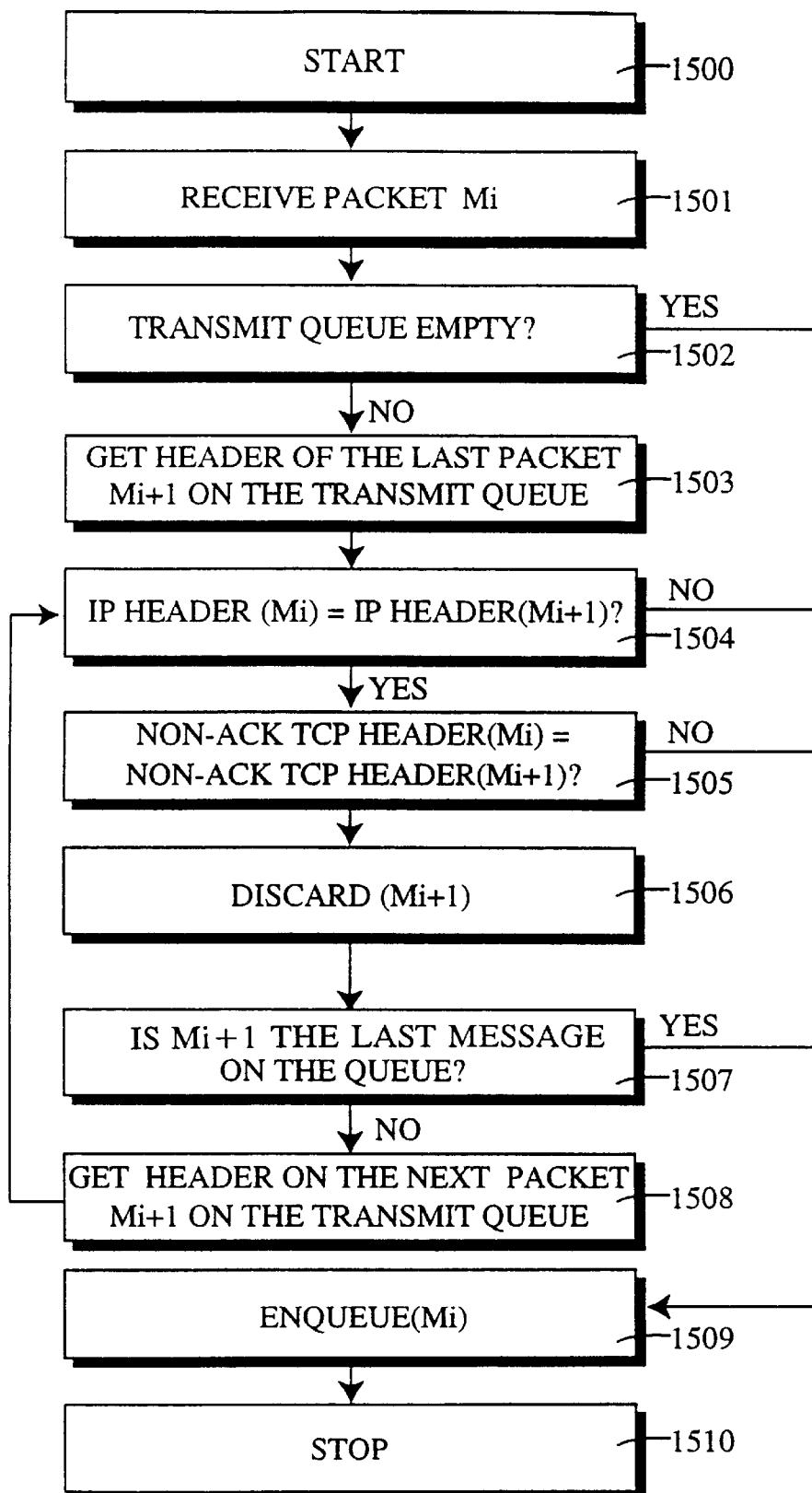


FIGURE 15

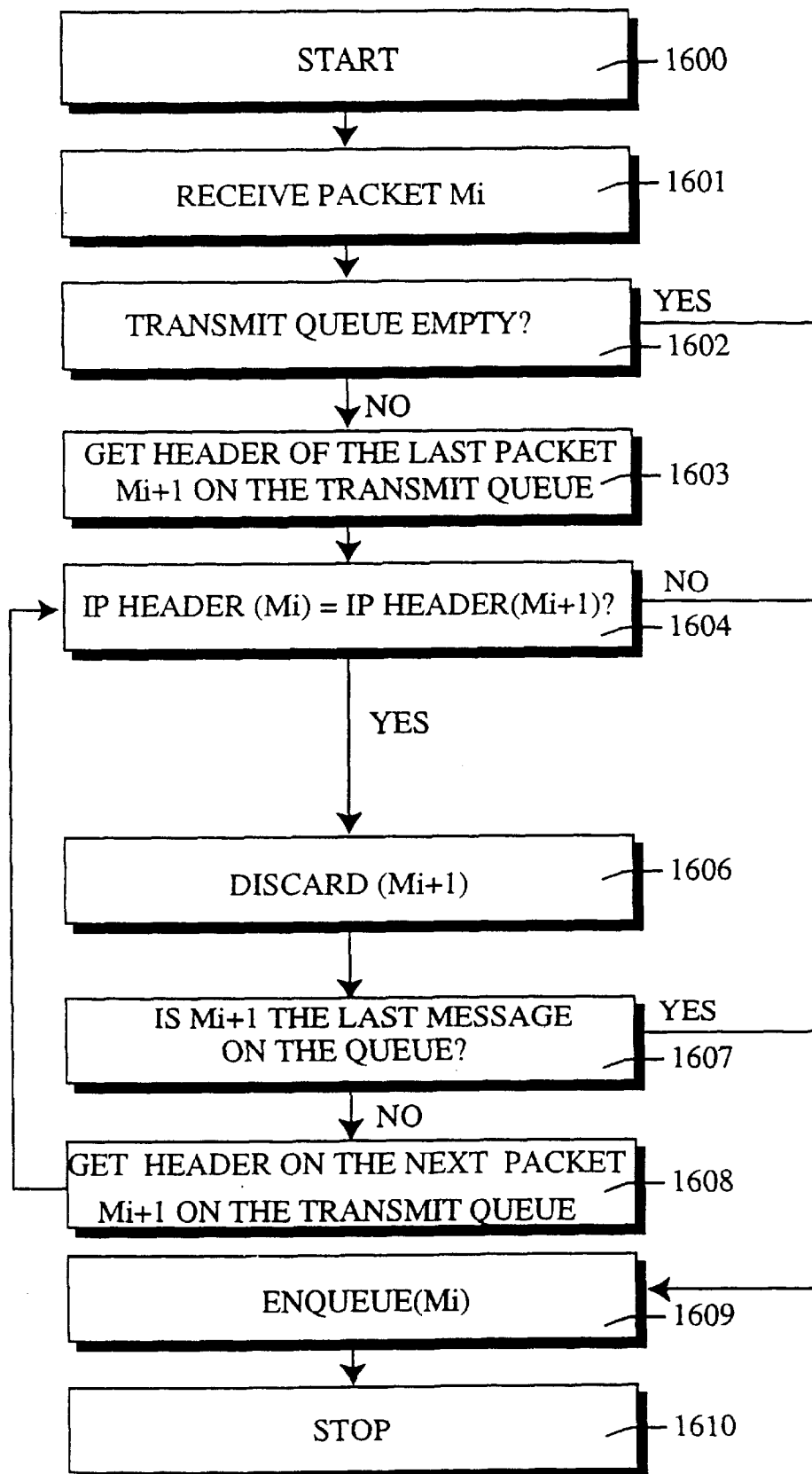


FIGURE 16

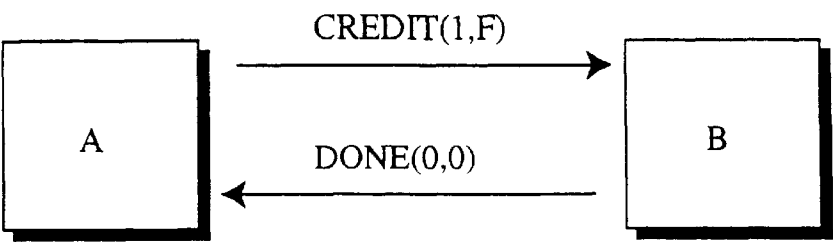


FIGURE 17

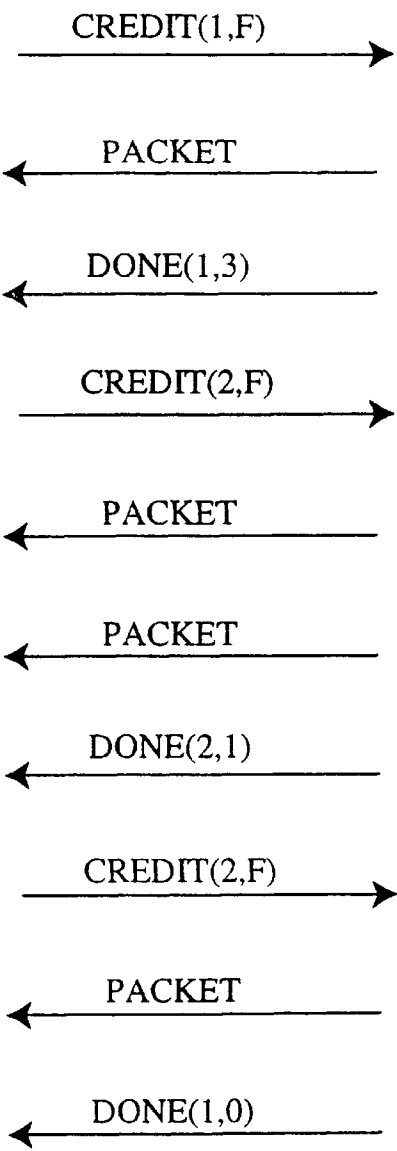


FIGURE 18

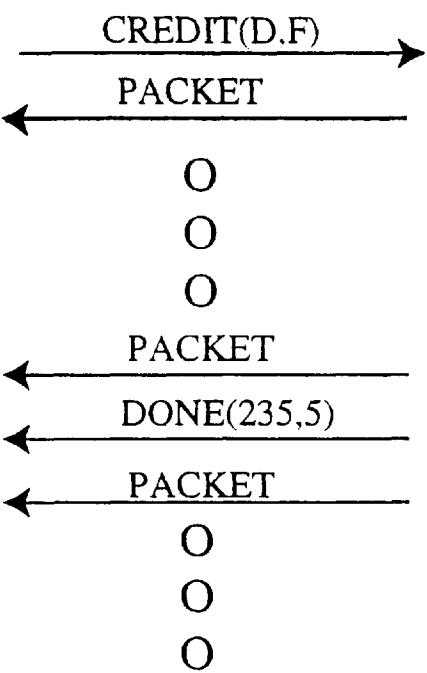


FIGURE 19

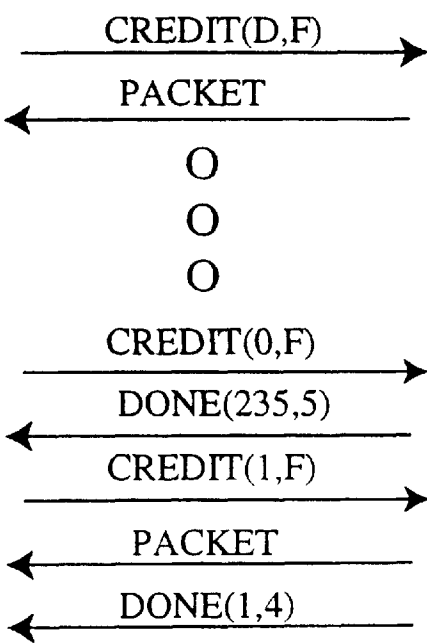


FIGURE 20

HYBRID ACCESS SYSTEM WITH AGC CONTROL OF UPSTREAM CHANNEL TRANSMIT POWER

This is a division of application Ser. No. 08/426,920, 5
filed Apr. 21, 1995 now U.S. Pat. No. 5,586,121.

FIELD OF INVENTION

This invention relates to systems and methods for extend- 10
ing a high-speed network to remote locations using an asymmetric hybrid access system.

BACKGROUND OF THE INVENTION

Current data communication systems typically use sym- 15
metric communication paths between transmit and receive sites which have substantially the same data rates and use the same media in both directions. Such media may include coaxial fiber optic or telephone twisted-pair lines. Some networks alternatively use broadcast only paths. However no current network combines the flexibility of full-duplex symmetric networks with the cost effectiveness of broadcast 20
only networks.

Prior attempts at achieving asymmetric data communica- 25
tions included modems with very low speed return channels or systems combining a low speed broadcast channel with telephone return lines. However no prior systems were able to extend a symmetric high-speed backbone network to remote locations at high speeds using an asymmetric hybrid access system. Known prior asymmetric systems are limited to low speed links.

It is desirable to develop a network which combines the flexibility of a full-duplex network with the effectiveness of a broadcast network at a reasonable cost.

SUMMARY OF THE INVENTION

According to the present invention a high speed backbone network is extended for communications with remote loca- 35
tions with a hybrid asymmetric architecture having fully interactive duplex characteristics and including independent upstream and downstream communication paths operable at separately selectable speeds and protocols. According to one embodiment of the present invention, the hybrid asymmetric architecture includes 6 Megahertz television channels down- 40
stream and telephone lines for upstream communications. Alternative downstream communications can be accomplished according to the invention with a selected high bandwidth broadband service including for example high definition television (HDTV). Downstream communications according to another embodiment can be implemented with a selected low cost, high speed broadband modem. Down- 45
stream communications can provide access to data from information sources including companies, government agencies, universities, libraries, and the like. Alternative upstream communications can be accomplished by a narrow band cable TV return channel. ISDN, radio, or a selected low-cost, low to medium speed telephone modem. The asymmetric hybrid system according to the present inven- 50
tion includes an interface with the backbone network connected to selected information sources. The interface includes point of presence (POP) circuits implementing high speed downstream communications with lower speed upstream communications. The interface connects the back- 55
bone network with cable TV head ends, TV transmitters, cell sites, remote users, and upstream and downstream channels.

The present invention further includes a hybrid access configuration which uses both downstream and upstream

channels. The present invention further includes a hybrid access configuration which uses downstream wireless TV channels and upstream public switch telephone network (PSTN), wireless RF communications or integrated services digital network (ISDN) telephone lines. The present inven-
tion further includes a hybrid access configuration which uses both downstream and upstream cable TV channels. The present invention further includes a hybrid access configu-
ration which has downstream satellite TV channels and upstream public switch telephone network (PSTN), wireless RF communications, or integrated services digital network (ISDN) telephone lines.

The present invention further includes packet and acknowledge suppression methods to eliminate redundant packet, byte, and acknowledge transmissions in a hybrid access system. A packet is defined as an information unit containing one or more bytes of information. Particularly according to the method of the present invention, a certain amount or number of data packets or bytes are enqueued or transmitted in a transmit-ahead window. Transmission of a window of bytes or packets is followed by a predetermined time-out period while the transmit queue awaits acknowl-
edgments of packets received. To the extent receipt acknowledgments are received as to particular bytes or packets, these packets and bytes in the transmit queue will be deleted from the transmit queue, and the transmit queue is open to receipt of further packets or bytes for emplace-
ment in slots of the transmission queue for the deletions made. With respect to acknowledgments placed in a trans-
mission queue, indications acknowledging receipt of later bytes and packets supersede acknowledgments of earlier transmitted bytes or packets. Accordingly, under the present invention, the earlier acknowledgments are deleted from an acknowledge transmission queue.

The present invention further includes an automatic address allocation and configuration method in transmis- 35
sions employing a hybrid access system. According to the present invention, remote users are identified initially with an abstract name, e.g., "Bob," and this abstract name is registered by the network management system. Configura- 40
tion is established by the downstream routers polling the remote users and registering the location of the remote user responding to the poll made with the particular abstract name. Internet Protocol address and upstream channel allo- 45
cation is accordingly accomplished subject to the configuration made including abstract name and identified location.

The present invention further includes a prioritized poll-
ing method in transmissions employing a hybrid access system. According to a method of the present invention, hybrid upstream routers poll client devices such as remote link adapters (i.e., "RLAs") according to predetermined priority levels. According to one embodiment of the present invention, priority levels are established for state categories of RLAs. According to one embodiment of the present invention, priority level states include status states such as idle, non-responsive, requesting channel(s), active, or active-credit. According to one embodiment of the present invention, RLAs which request a channel are prioritized according to the amount of time its channel requests have gone unfulfilled. According to one embodiment of the present invention hybrid upstream routers poll downstream RLAs which are idle more frequently than non-responsive RLAs.

The present invention further includes an automatic gain adjustment technique in transmissions employing a hybrid access system, according to which a remote link adapter sends successive indications to a hybrid upstream router at

selected different power levels. When a power level indication is received by a hybrid upstream router, the receiving hybrid upstream router confirms receipt of such indication to the sending remote link adapter which then registers an associated power level as qualified. According to one embodiment of the present invention, the selected different power levels are dynamically adjusted in magnitude of transmission level.

The present invention further includes a quality-based upstream channel allocation technique in transmissions employing a hybrid access system. According to the technique, the hybrid upstream router first determines the availability of upstream cable channels by a frequency agile RLA setting a wide range of narrowband upstream channels. The upstream router then makes a quality assessment of available channels in view of most recent demand, and it finally selects an upstream channel in view of the quality assessment made. Quality assessment includes determination of busy status and signal characteristics including error rates, noise floor, and signal to noise ratio. Upstream channels are releasable according to inactivity or time-out criteria, according to which release or reassignment occurs responsive to inactivity for over a threshold period. Inactivity is assessed by the hybrid upstream router monitoring operability indications and data packets received from assigned RLAs.

The present invention further includes a credit allocation technique in transmissions employing a hybrid access system. According to a method of the present invention, an upstream channel is shared by a plurality of RLAs in accordance with a credit criterion, and credit control packets are dispatched to a RLA which permit the RLA to send data packets to arbitrary hosts. Upon sending a data packet, the RLA returns the credit control packet to a server containing software including Hybridware™ code which manages data flows. The Hybridware™ code or Hybridware™ server, according to one embodiment of the present invention, includes software distributed among data processors in the upstream and downstream routers and elsewhere in the HASPOP, including for example in the network management system.

DESCRIPTION OF THE DRAWINGS

FIG. 1 is a detailed schematic drawing of a hybrid access system connected to a backbone network such as the Internet, and having points of presence connecting the backbone network to cable TV headends, TV transmitters, or Logical Nodes (e.g., cell sites), with remote users connecting to an RLA which in turn connects to downstream TV channels and independent lower speed upstream channels:

FIG. 2a is a schematic drawing of a hybrid access system point of presence (POP) according to the present invention including at least a single host computer or server and at least a single router including a hybrid downstream router, a hybrid upstream router, a dial-up router, an Internet router, or a backbone network router, and a POP LAN switch:

FIG. 2b is a block diagram of a downstream router according to the present invention;

FIG. 2c is a block diagram of an upstream router according to the present invention;

FIGS. 3a, 3b, and 3c comprise a pictorial diagram of a hybrid access system according to the present invention according to which a remote user can communicate with an information provider through the hybrid access system;

FIG. 4 is a logical data flow diagram showing data flows between a server and a client computer of the hybrid access system according to the present invention;

FIG. 5 is a flow chart of operation of a two-way cable network embodiment of the hybrid access system according to the present invention;

FIG. 6 is a flow chart of operation of a one-way cable network embodiment of the hybrid access system according to the present invention, including provision for upstream telephone system data flow;

FIG. 7 is a Hybridware™ server state diagram of the upstream channel allocation method according to the present invention;

FIG. 8 is a Hybridware™ client state diagram of the upstream channel allocation method according to the present invention;

FIG. 9 is a logical data flow diagram showing data flows between router server and client computers of the hybrid access system for automatic handling of multiple clients according to automatic address allocation methods of the present invention;

FIG. 10 is a flow chart of address allocation control protocol according to the present invention;

FIG. 11 is a state diagram of the hybrid adaptive gain control protocol according to the present invention;

FIG. 12a is a transmission diagram of information exchange between two nodes in an asymmetric network according to the present invention, having a high downstream data rate of n bits per second and a lower upstream data rate of m bits per second;

FIG. 12b is a diagram of conventional downstream messaging of first through fourth data packets, 100, 250, 325, and 450, between first and second nodes, in parallel with upstream transmission of receipt acknowledge indications;

FIG. 12c is a diagram of a conventional transmission buffer queue in a RLA of a remote client station;

FIG. 12d is a diagram indicating a redundant acknowledgment packet in a conventional transmission buffer queue in a RLA of a remote client station;

FIG. 12e is a diagram of a conventional transmission buffer queue, indicating no need for an earlier acknowledgment (ack 100) packet in view of a new acknowledgment (ack 210) packet that supersedes the earlier acknowledgment packet;

FIG. 12f is a diagram of first through fourth network nodes serially connected to each other in accordance with the present invention, wherein the link between the second and third nodes is asymmetric and that between the first and second and the third and fourth nodes are symmetric;

FIG. 13 is a tabular description of transmission control protocol/Internet protocol (TCP/IP) data transmission packet protocol header as used in connection with the present invention;

FIG. 14a is a diagram of a sequential data transmission between first and second network nodes, according to the present invention;

FIG. 14b is a diagram of the contents of a conventional transmission queue in the downstream node during a first time period;

FIG. 14c shows the contents of a transmission queue in a downstream node during a later time period, eliminating retransmission of the 300 packet, according to the present invention, because another 300 packet was already in the transmission queue;

FIG. 15 is a flow diagram of the acknowledge suppression method according to the present invention;

FIG. 16 is a flow diagram of the packet suppression method according to the present invention;

FIG. 17 is a flow diagram of information exchanges between Hybridware™ server and client, under conditions in which the client has no information to transmit;

FIG. 18 is a flow diagram of information exchanges between Hybridware™ server and client, under conditions in which the client has information to transmit and the server gradually allocates bandwidth to the client;

FIG. 19 is a flow diagram of information exchanges between Hybridware™ server and client, under conditions in which the server allocates the client a dedicated channel, the client transmits data and periodically reports to the server with done messages; and

FIG. 20 is a flow diagram of information exchanges between Hybridware™ server and client, under conditions in which a dedicated channel is converted into a shared channel.

DESCRIPTION OF THE PREFERRED EMBODIMENT

FIG. 1 is a detailed schematic drawing of a hybrid access system 1 according to the present invention, showing a RLA and user workstation 29 connected through hybrid access system 1 to a variety of entities connected to a backbone network 20 such as Internet, including information providers 21, corporations 22, government agencies 23, universities 24, and others 25. A backbone network is one which is typically not directly connected to a user. Hybrid access system 1 according to an embodiment of the present invention includes hybrid access system (HAS) points of presence (POPs) 26 and other points of presence 27. HASPOPs 26 include individual HASPOPs 26 (1)–26(3) which enable communication over a broadband network, either by upstream and downstream cable communications or by downstream cable and upstream telephone communications or various other hybrid configurations (e.g., wireless or satellite). The present invention particularly includes (1) a hybrid access configuration which uses downstream cable TV channels and upstream public switch telephone network (PSTN), wireless RF communications or integrated services digital network (ISDN) telephone lines; (2) a hybrid access configuration which uses downstream wireless TV channels and upstream public switch telephone network (PSTN), wireless RF communications or integrated services digital network (ISDN) telephone lines, (3) a hybrid access configuration which uses both downstream and upstream cable TV channels; (4) a hybrid access configuration which uses both downstream and upstream wireless channels; and (5) a hybrid access configuration with downstream satellite channels and upstream PSTN, wireless RF communications or ISDN telephone channels.

Backbone network 20 such as the Internet which includes a plurality of Internet servers 20' connected to HASPOPs 26 each including a plurality of host computers and/or servers, collectively referred to as hybrid servers. Hybrid access system 1 further includes broadcast units such as, a cable television (TV) head end 28, independent upstream channels 28; and a RLA 29, U.S. Pat. No. 5,347,304 (1994) assigned to Hybrid Networks, Inc., and describing an example of an RLA is hereby expressly referenced and incorporated herein in its entirety. An RLA may receive analog broadcast signals including encoded digital information which the RLA decodes and provides to a data terminal or computer. According to an embodiment of the present invention, the downstream flow of information proceeds from HASPOPs 26(1)–26(3) through cable TV head end or TV transmitters 28 or cell sites 30 and through RLA and user workstation 29.

Upstream information flow proceeds in one case from RLA and user workstation 29 through independent upstream channels 28; to HASPOP 26(1), and then to backbone network 20; alone T1 or T3 or other digital lines. In another case, upstream information proceeds from user workstation through RLA 29 through the cable TV network, and cable TV head end 28 to hybrid access system point of presence and then through T1, T3, or other digital lines to backbone network 20; The outputs of the cable TV headends or TV transmitters 28 include pluralities of high speed downstream broadband radio frequency, i.e., RF, channels connected to respective remote users 29. Hybrid access system 1 further includes a plurality of cell sites 30 connected through high speed links to a corresponding hybrid access system point of presence 5. The outputs of cell sites 30 include pluralities of high speed downstream broadband channels connected to selected remote users 29. A particular remote user 29 can be connected via an independent lower speed upstream channel to a hybrid access system point of presence 26 as discussed below or via a similar independent lower speed upstream channel to another point of presence system 27. By lower speed it is meant at a speed reduced from the speed of the high speed link used to transmit information downstream. A particular hybrid access system point of presence 5 can be connected via duplex high speed links to a plurality of cable TV headends or TV transmitters, to a plurality of cell sites 30, or a combination of cable TV headends or TV transmitters 28 and cell sites 30.

FIG. 2a is a schematic drawing of a point of presence (POP) system 26(1) according to the present invention, including host computers or servers 39 and a POP local area network, i.e., LAN switch 33 to which host computers or servers 39 are connected. Further connected to LAN switch 33 are one or more downstream and one or more upstream hybrid access System point of presence routers, respectively 34 and 35, one or more dial-up routers 36, a network management system 37, and conventional routers 38. Connected to POP LAN switch 33 are one or more data storage elements or systems. Each downstream hybrid access system point of presence router 34 is connected with a high speed link to a TV transmitter or cable TV headend, for example. Further, each upstream hybrid access system point of presence router 35 is connected to a plurality of independent upstream channels, which operate at a lower speed than the downstream high speed links to TV transmitters or cable TV headends. Each dial-up router 36 is connected to a plurality of independent upstream channels operating at a lower speed than the indicated downstream high speed links. Each conventional router 38 is connected along a high speed line to wide area network (WAN) lines to selected information providers, Internet, or other nodes or businesses. POP LAN switch 33, according to one embodiment of the present invention is connected directly along a high speed line to wide area network (WAN) lines to selected information providers, Internet, or other nodes or businesses.

FIG. 2b is a block diagram of hybrid downstream router 34 according to the present invention. In particular, downstream router 34 includes network interface 34a, link interface 34b, physical interface 34c, controller 34d, physical interface 34e, link interface 34f, and network interface 34g. Downstream router 34 and physical interface 34e are connected to POP LAN switch 33 for sending and receiving information, and physical interface 34e, link interface 34f, and network interface 34g are serially connected to each other and to controller 34d for bidirectional communication of selected information. Additionally, controller 34d is connected directly to each of physical interface 34e and link

interface 34f along indicated lines to accomplish control and messaging functions. Downstream router 34 and physical interface 34c are connected to cable TV headends, TV broadcast sites, cell sites or the like, to communicate information primarily or exclusively in a unidirectional or downstream direction, and physical interface 34c, link interface 34b, and network interface 34a are serially connected to each other and to controller 34d for selected communication of selected information. Additionally, controller 34d is connected directly to each of physical interface 34c and link interface 34b along indicated lines to accomplish control and messaging functions. Downstream router 34 may include one or more of physical interfaces 34c. According to an embodiment of the present invention, router 34 may be a bridge without network interfaces 34a and 34g or a connection without network interfaces 34a and 34g and without link interfaces 34b and 34f. According to yet another embodiment of the present invention, router 34 can be a gateway.

FIG. 2c is a block diagram of upstream router 35 according to the present invention. In particular, upstream router 35 includes network interface 35a, link interface 35b, physical interface 35c, controller 35d, physical interface 35e, link interface 35f, and network interface 35g. Upstream router 35 and physical interface 35e are connected to POP LAN switch 33 for sending and receiving information, and physical interface 35e, link interface 35f, and network interface 35g are serially connected to each other and to controller 35d for bidirectional communication of selected information. Additionally controller 35d is connected directly to each of physical interface 35e and link interface 35f along indicated lines to accomplish control and messaging functions. Upstream router 35 and physical interface 35c are connected to upstream channels, e.g., telephone links for example, to communicate information primarily or exclusively in a unidirectional or upstream direction, and physical interface 35c, link interface 35b, and network interface 35a are serially connected to each other and to controller 35d for selected communication of selected information. Additionally, controller 35d is connected directly to each of physical interface 35c and link interface 35b along indicated lines to accomplish control and messaging functions. Upstream router 35 may include one or more of physical interfaces 35c. According to an embodiment of the present invention, router 35 may be a bridge without network interfaces 35a and 35g or a connection without network interfaces 35a and 35g and without link interfaces 35b and 35f. According to yet another embodiment of the present invention, router 35 can be a gateway.

FIG. 3a-3b are drawings of a hybrid access system 1 according to the present invention according to which remote user having a workstation 2 or connected to LAN 61, as shown respectively in FIGS. 3b and 3c can communicate with a selected information provider 21 including LAN 50, bridge or router 51 connected to LAN 50, and dial-up router 52 connected to LAN 50 through a hybrid access system point of presence 26. Further, HAS POP is connected along a high speed link to bridge or router 51. Additionally, HAS POP 26 is linked to other information providers to receive selected information items. Additionally, dial-up router 52 is connected to a plurality of upstream channels. FIGS. 3b and 3c additionally show respective first and second users, in one case including workstation 2 in turn including a RLA 60 and in the other instance including RLA 60 and a local area network (LAN) 61 connected to RLA 60. First user 29(1) is connected to an upstream channel from user workstation 2, and second user 29(2) is connected to an upstream channel

directly from RLA 60. In the case of each user, RLA 60 receives input information, particularly radio frequency (RF) information along one of respective input channels connected thereto.

FIG. 4 is a logical data flow diagram showing data flows between a server and a client computer of the hybrid access system 1 according to the present invention. Hybrid access system 1 includes a server application 70, a hybrid system manager 71, and a Hybridware™ server 72 connected to LAN 38. Hybrid access system 1 further includes a Hybridware™ client 73 and a client application 74 operating with Hybridware™ client 73. Hybridware™ client 73 communicates with Hybridware™ server 72, as transmitter alone upstream channel 75 or as receiver along downstream channel 76. Downstream data traffic is expected to be higher capacity than upstream data traffic: Hence, the bolder depiction of downstream channel 76 than upstream channel 75.

FIG. 5 is a flow chart of operation of a two-way cable network embodiment of hybrid access system 1 according to a hybrid protocol embodiment of the present invention. In particular, according to one embodiment of the hybrid protocol of the present invention, client application 74 sends 100 data to server application 70 in an upstream direction, thereby issuing a connection request. Hybridware™ client 73 buffers the data received and checks if it controls an upstream data channel. If it does, then the data is transmitted forthwith. If it doesn't, Hybridware™ client 73 queues up the data message and creates 101 a channel request for a particular subchannel within upstream channel 75. Hybridware™ client 73 then waits 102 for a poll from Hybridware™ server 72, i.e., Hybridware™ router. According to an embodiment of the present invention, prioritized polling is conducted whereby not all clients are polled at the same frequency. Clients in an idle state are polled relatively frequently. Clients in blocked and NON-RESP states are polled but not at the same relatively high frequency. Clients in an ACTIVE state are not polled at all. This is based on the assumption that an active client has what it wants and that it is most important to respond quickly to new connections coming from clients in an IDLE state. Those clients coming from a NON_RESP cycle receive second order attention and can wait a little longer, since they may have already been in a state where communication are impossible and may have been in that state for a considerable period of time. According to one embodiment of the present invention, a poll cycle is the smallest period such that all but active clients are polled at least once. Idle clients may be polled multiple times during one poll cycle. Blocked and non_resp clients are distributed evenly across the poll cycle to assure that the latency for acquiring a channel for idle units is uniform. All clients are grouped according to their state and polled within each group according to the round robin approach according which each of a series is polled in sequence and then the same sequence is repeatedly polled individual by individual. Upon receipt of a poll, Hybridware™ client 73 sends 103 a channel request via lower speed upstream channel 75. Hybridware™ router 72, i.e., server, receives 104 the channel request from Hybridware™ client 73 and initially sends 105 a login message to Hybridware™ system manager 71. Hybridware™ system manager 71 verifies 106 that Hybridware™ client 73 is an authorized user of data processing services on the particular node or system within which hybrid access system 1 operates. Then, Hybridware™ router 72 receives 107 a login response message from Hybridware™ system manager 71 through LAN 38, which indicates whether the client is allowed to operate on the particular network and which contains other

operating characteristics of Hybridware™ client 73. Hybridware™ router 72 then allocates 108 (see state diagrams of FIGS. 7 and 8) an upstream channel 75 for Hybridware™ client 73, depending on channel availability and suitability. Suitability depends on factors including but not limited to channel quality, type of service required, operating characteristics of Hybridware™ client 73, configuration restrictions, and the like. Hybridware™ router 72 sends 109 an upstream channel allocation message to Hybridware™ client 73 via high speed downstream channel 76, which may according to one embodiment of the present invention specify the frequency on which Hybridware™ client 73 is permitted to transmit. Thereafter, Hybridware™ client 73 receives 110 an upstream channel allocation. Next, Hybridware™ client 73 tunes 111 to the specifically allocated upstream data channel frequency on which it is permitted to transmit data. Finally, Hybridware™ client 73 sends 112 the selected application data from client application 74. Accordingly, client application 74 and server application 70 are able to send and receive 113 data via upstream bandwidth management of an asymmetric hybrid access system, according to the present invention.

FIG. 6 is a flow chart of operation of a one-way cable network embodiment of the hybrid access system 1 according to the present invention, including provision for upstream telephone system data flow. According to this embodiment of the present invention, when client application 74 needs to communicate with server application 70 in an upstream direction. Hybridware™ client 73 dials 202 Hybridware™ router 72. Then, Hybridware™ client 73 sends 203 a channel request via lower speed PSTN upstream channel (not shown). Hybridware™ router 72 receives 204 the channel request and sends 205 a login message to Hybridware™ system manager 71. Hybridware™ system manager 71 verifies 206 Hybridware™ client 73 as an authorized user. Then, Hybridware™ router 72 receives 207 a login response from Hybridware™ system manager 71. Hybridware™ router 72 sends 208 an authorization message to Hybridware™ client 73 via high speed downstream channel 76. Hybridware™ client 73 receives 209 the authorization message for use of a selected upstream PSTN channel. Finally, Hybridware™ client 73 sends 212 the selected application data. Accordingly, client application 74 and server application 70 are able to send and receive 213 selected data via the asymmetric hybrid access system 1.

FIG. 7 is a Hybridware™ server state diagram for upstream channel allocation of the hybrid access system according to one embodiment of the present invention. According to the state diagram of FIG. 7, the Hybridware™ server can be in one of four states: IDLE 301, NON_RESP 304, BLOCKED 302, or ACTIVE 303. In the IDLE state, the Hybridware™ server expects an IDLE poll response. If there is no request to the client from the application or a channel request message, or if there is application data that needs to be sent in the upstream direction. Upon receiving a channel request message, the server transitions the client to a BLOCKED state. In a BLOCKED state, the server sends one of two messages to the client, a channel allocation message or a no channel available message. Upon sending a channel allocation message, the server transitions the client to an ACTIVE state. Upon sending a no channel available message, the client remains in a BLOCKED state. The client will remain in the BLOCKED state until either a channel becomes available in which case the server will transition the client to the ACTIVE state or the server receives a channel release message in which case the server will transition the client to the IDLE state. In the ACTIVE state,

the server does not poll the client. The server transitions the client from ACTIVE to IDLE upon receiving a channel deallocation message or upon detecting a system defined inactivity time-out. In the ACTIVE state, the server waits for a periodic heartbeat message from the client. The Hybridware™ server software awaits periodic heartbeat messages from the client at selected time intervals. The server software monitors other channel quality parameters including errors and signal to noise ratios. If the server stops hearing a certain number of operability indications or signals within a system defined interval as to a particular client, or if particular parameters (e.g., signal to noise ratio) exceed a predetermined threshold, then the server sends a directed poll to the particular client. Essentially, the client is instructed to respond on another control frequency. If the client responds on the designated control frequency, the server reassigns the upstream channel to the client, so that it can continue to operate. If not, the client is deemed NON_RESP. Channel quality monitoring and channel reassignments are done transparently to the user and the applications. If a certain, system defined, consecutive count of heartbeat messages is missed, the server issues a special poll message or directed poll. If the client does not respond, the server transitions to the NON_RESP state. If the client responds to the poll, the server either remains in the ACTIVE state or transitions to the IDLE state. The former happens, if the client responds with a channel request message, and the latter happens, if the client responds with an IDLE poll response. In the former case, the server may decide to assign a different upstream channel to the client. In the BLOCKED or IDLE state, the server will transition the client to NON_RESP, i.e., “non-responsive,” state after the client fails to respond to a system defined number of polls. The NON_RESP state is almost identical in terms of state transition to idle state, a difference being that an IDLE poll response transitions the client into an IDLE state.

FIG. 8 is a Hybridware™ client state diagram for upstream channel allocation of the hybrid access system 1 according to an embodiment of the present invention, involving two way cable communication. According to this embodiment, the hybrid upstream client protocol has three states. IDLE 401, CON_REQ, i.e., “connect request” 402, and ACTIVE 404. In the IDLE state, the client, when polled, will transmit an IDLE poll response, if there is no request from the application. However, it will respond with a channel request message, if there is data that needs to be sent upstream. Upon transmitting a channel request message, the client transitions to a CON_REQ state. In the CON_REQ state, the client expects one of two messages from the hybrid router, a channel allocation or a no-channel allocation signal. Upon receiving a channel allocation message, the client informs the application and tunes to the channel it was allocated and transitions to the ACTIVE state. Upon receiving a no-channel available message, the client informs the application and transitions to the IDLE state. In the ACTIVE state, the client forwards data messages application to the upstream transmitter. In the ACTIVE state, the client further monitors the application activity and if it detects that no data has moved from the application to the upstream transmitter for a system defined period of time, it will send a channel deallocation request and transition to an idle state. In an ACTIVE state, the application may explicitly request that the channel be released, in which case the client will send a channel deallocation request to the hybrid router and will transition to the IDLE state. In the ACTIVE state, the client periodically sends an operability indication message to the server. If the client receives a poll message during the

ACTIVE state, it will send a channel request message and will transition to a CON_REQ state. The hybrid router may also send an unsolicited channel release message, in which case the client will notify the application and transition from ACTIVE state to IDLE state.

FIG. 9 is a logical data flow diagram showing data flows between server and client computers of the hybrid access system 1 according to the present invention, for multiple clients under an address allocation protocol simplifying distribution of ip addresses to remote systems. The protocol according to the present invention determines where a given Hybridware™ client is located and how to download its ip address, given that the client has no address yet. Hybrid access system 1 includes a server application 70, a hybrid system manager 71, and Hybridware™ servers 72a & 72b connected to LAN 38. Hybrid access system 1 further includes Hybridware™ clients 73a and 73b and client applications 74a and 74b operating with respective ones of Hybridware™ clients 73a and 73b. Hybridware™ client 73a communicates with Hybridware™ server 72a, as transmitter along upstream channel 75a or as receiver along downstream channel 76a. Hybridware™ client 73b communicates with Hybridware™ server 72b, as transmitter along upstream channel 75b or as receiver alone downstream channel 76b. Downstream data traffic is expected to be higher capacity than upstream data traffic: Hence, the bolder depiction of downstream channels 76a and 76b than upstream channels 75a and 75b.

FIG. 10 is a flow chart of address allocation control according to an embodiment of the present invention to logon and configure Hybridware™ clients with a selected unique node name which is entered in the configuration database in the hybrid system manager 71 which is the software portion of network management system 37. In particular, hybrid system manager 71 sends a new client message to all hybrid routers 72a and 72b after learning of particular new clients by message, mail, or telephone call (step 500 in FIG. 10). At this point the hybrid system manager is aware of a Hybridware™ client identification name and equipment serial number, but has not associated the client identification name with a separate unique client address (e.g., Internet Protocol, or IP address) provided by separate automatic registration. Each hybrid router 72a and 72b periodically broadcasts a configuration poll message (step 501). Hybridware™ clients recognize their preselected unique names during a configuration poll (step 502). Hybridware™ clients 72a and 72b respond to the configuration poll. Hybrid routers 72a and 72b receive respective configuration poll responses. Then, hybrid routers 72a and 72b send respective client found messages to system manager 71. System manager 71 then sends a cease configuration poll message to all hybrid routers. Further, system manager 71 allocates an Internet protocol (IP) address and other configuration data for each new client according to the preselected unique names. System manager 71 sends the IP address and other configuration data to the applicable hybrid router 72a, 72b. Then, the applicable hybrid router 72a, 72b sends, using broadcast or unicast and the unique name, the corresponding IP address and other configuration data to the applicable Hybridware™ client. As a result, the Hybridware™ client receives the IP address and other configuration data determined and reconfigures appropriately. In summary, according to the present invention, an automatic address allocation and configuration method in transmissions employs a hybrid access system. Remote users are identified initially with a unique abstract name, e.g., "Bob," and this abstract name is registered by the network management

system. Configuration is established by the upstream routers polling the remote users and registering the location of the remote user responding to the poll made with the particular abstract name. Upstream channel allocation is accordingly made subject to the configuration made including abstract name and identified location. Automatic address allocation and configuration is accordingly accomplished on line at an initial log-on session with a new user. The method of the present invention is accordingly swift and simple, eliminating registration delays experienced by many known log-in systems.

FIG. 11 is a state diagram of the hybrid adaptive gain control protocol according to the present invention, which overcomes noise and attenuation while transmitting on cable in an upstream direction. The hybrid adaptive gain control protocol has a SEARCHING state 600 and a STABLE state 601. In the STABLE state 601, the protocol evaluates poll messages from the hybrid router. If a poll message indicates loss of a poll response, the protocol transitions to the SEARCHING state 600. Poll responses are transmitted at a fixed power level. In the SEARCHING state 600, the client system responds to polls with a poll response at larger and larger power levels. After receiving a system specified, number of consecutive polls with an indication of a successful poll response, the system transitions to a STABLE state.

FIG. 12a is a transmission diagram of information exchange between nodes A and B. Nodes A and B comprise an asymmetric network according to the present invention, having a high downstream data rate of n bits per second and a lower upstream data rate of m bits per second. The downstream data rate n is greater than the upstream data rate m. Node B includes receive and transmission queues to hold information received and to be sent, including acknowledge indications or messages. The acknowledge suppression method according to the present invention relates to the node or system transmitting data acknowledgments, which acknowledges receipt of either data packets or data bytes contained in incoming packets. The numbers on data packets indicate the position of the last data byte of the packet in the data stream, and the acknowledgment numbers indicate that all the bytes of the data stream up to and including the byte indicated have been received. According to the method of the present invention, the acknowledgment of byte k (or packet number k) indicates that all bytes or packets prior to k have been received. According to a method of the present invention, the transmit queue queues up additional acknowledgment packets as new packets are received. FIG. 12b is a diagram of messaging of first through fourth data packets, 100, 250, 325, and 450, between upstream and downstream nodes, in parallel with upstream transmission of receipt acknowledge indications with respect to only two data packets, namely 250 and 450. FIG. 12c is a diagram indicating acknowledgment of first and second packet receptions during a first time period. In particular, packet 1 (i.e., "pkt 1") is currently being sent, and an acknowledge (i.e., "ack 250") message is currently being appended at the end of the transmit queue. FIG. 12d is a diagram indicating acknowledgment of another packet during another period. FIG. 12e is a diagram indicating no need for an acknowledge 100 signal in view of a subsequent acknowledgment having been successful. In particular, according to the acknowledge suppression method of the present invention, not all acknowledgment packets will be sent to node A, because the "ack 210" message carries information which supersedes the "ack 100" message. Accordingly, the amount of traffic on the communication link from B to A is reduced, according to the

present invention. In general, this introduces an acknowledgment latency, but where all messages queued up for transmission are acknowledgments, acknowledgment latency is reduced. For example, when an "ack 15" signal is transmitted and an "ack 100" message awaits transmission, and an "ack 210" message is appended to the queue, the acknowledgment suppression method according to the present invention will delete the "ack 100" message as superfluous. Any new acknowledgments appended while "ack 15" is being transmitted will result in deletions of unnecessary acknowledgments keeping queue length to two. Upon transmit completion of "ack 15," the next acknowledgment, e.g., "ack 210" will be transmitted. Accordingly, the method of the present invention eliminates unnecessary transmission of "ack 100" signals and provides for reduced acknowledgment latency for "ack 210." The ack suppression method according to the present invention, accordingly reduces the probability of queue overflow and potential out of memory conditions in system B. It reduces the load on the communication link from B to A, and in some circumstances reduces acknowledgment latency for data transfers from B to A. FIG. 11f is a diagram of first through fourth network nodes serially connected to each other in accordance with the present invention, wherein the link between the first and second nodes is symmetric, the link between the second and third nodes is asymmetric and that between the third and fourth nodes is symmetric. The acknowledge suppression method of the present invention applies to both the communications system of FIG. 12a, in which nodes A and B are end nodes, as well as to the communications system of FIG. 12f, in which nodes B and C are intermediate systems such as a router, and data packets originating at node D are transmitted through router nodes C and B to a central system connected to node A.

FIG. 13 is a tabular description of a transmission control protocol/Internet protocol (TCP/IP) data transmission packet protocol header as used in connection with the present invention. The first five 32 bit words and the following IP options are referred to as the IP header. The five words following the IP options together with the words containing TCP options are referred to as the TCP header. The non-ack TCP header is the TCP header less the acknowledgment number field.

FIG. 14a shows sequential data transmission between first and second nodes, according to the present invention. As shown in FIG. 14a, data packets or bytes 100–700 are transmitted from node A to node B. Concomitantly, acknowledge messages, "ack 100," "ack 200," and "ack 300" were dispatched from node B to node A.

FIG. 14b shows a data packet sequence of packets 100–400 held in the transmit queue during a first time period, followed by a single acknowledgment, "ack 100."

FIG. 14c is a diagram of a data packet sequence transmitted during a later time period, eliminating retransmission of the 300 packet, because another 300 packet was already in the transmission buffer,

FIG. 15 is a flow diagram of an acknowledge suppression (AS) method, i.e., an AS method, according to the present invention in which receipt of information transmitted from system A to system B over a first independent simplex communication link is acknowledged by system B. The method of the present invention starts 1500 at a particular time, and a first packet Mi of information is received 1501. If the transmit queue is not empty 1502, the header of the last packet Mi+1 on the transmit queue is obtained 1503. If the transmit queue is empty 150, then Mi is enqueued 1509 and

the AS method according to the present invention is completed. If the header of the next packet Mi+1 on the transmit queue equals 1504 the header of packet Mi, and the NON-ACK TCP header of Mi equals 1505 the NON-ACK TCP header of Mi, then Mi+1 is discarded 1506. If the header of the last packet Mi+1 on the transmit queue does not equal 1504 the header of packet Mi, or the NON-ACK TCP header of Mi does not equal 1505 the NON-ACK TCP header of Mi, then Mi is enqueued 1509 and the AS method according to the present invention is completed. If Mi+1 is not the last message on the queue 1507, then the header on the next packet Mi+1 on the transmit queue is obtained 1508, and a comparison is done to determine whether the header of the last packet Mi+1 on the transmit queue equals 1504 the header of packet Mi. If Mi+1 is the last message on the queue 1507, then Mi is enqueued 1509 and the AS method according to the present invention is completed.

FIG. 16 is a flow diagram of the packet suppression (PS) method according to the present invention. The method of the present invention starts 1600 at a particular time, and a first packet Mi of information is received 1601. If the transmit queue is not empty 1602, the header of the last packet Mi+1 on the transmit queue is obtained 1603. If the transmit queue is empty 1602, then Mi is enqueued 1609 and the PS method according to the present invention is completed. If the header of the last packet Mi+1 on the transmit queue equals 1604 the header of packet Mi, then Mi+1 is discarded 1606. If the header of the last packet Mi+1 on the transmit queue does not equal 1604 the header of packet Mi, then Mi is enqueued 1609 and the PS method according to the present invention is completed. If Mi+1 is not the last message on the queue 1607, then the header on the next packet Mi+1 on the transmit queue is obtained 1608, and a comparison is done to determine whether the header of the last packet Mi+1 on the transmit queue equals 1604 the header of packet Mi. If Mi+1 is the last message on the queue 1607, then Mi is enqueued 1609 and the PS method according to the present invention is completed.

FIG. 17 is a flow diagram of information exchanges between Hybridware™ server and client, according to conditions in which the client has no data to transit. A credit (1,F) corresponding to a single predetermined amount of data, e.g., ten bytes, or ten packets at a selected frequency F, is transmitted from node A to node B, and a done signal DONE(0,0) is transmitted from node B to node A, indicating that no data packet was transmitted, leaving the existing credit level of the particular channel unchanged. The credit protocol according to the present invention permits single upstream cable channels to be shared by multiple remote link adapters. Alternatively, single upstream channel is controlled and used by a single remote link adapter until the channel is relinquished. The present invention includes an allocation method in transmissions employing a hybrid access system. According to a method of the present invention, an upstream channel is shared by a plurality of remote link adapters in accordance with a credit criterion, and credit control packets are dispatched to a remote link adapter which permit the remote link adapter to send data packets to arbitrary hosts. Upon sending a data packet, the remote link adapter returns the credit control packet to a Hybridware™ server. A credit permits a remote link adapter to send a certain number of packets up to a maximum number controlled by a configuration parameter MAX_CREDIT_PACKETS, thereby eliminating polling for that period. If a remote link adapter does not have a data packet to send, it returns the credit to the hybrid access system without sending any data packets. The remote link adapter

then sets a field in the credit control packet to the number of packets which was sent. If the protocol process at the server does not receive credit status information from the credit control packet within a certain credit time-out, CREDIT_TIMEOUT, in milliseconds, for a certain number of times, FAIL_CNT, consecutively, the remote link adapter is assumed to be in error and is put in a not-responding state (NON-RESP). The overall upstream channel performance of a remote link adapter using a credit channel is lower than a remote link adapter on a sole use upstream channel. If any sole use upstream channel becomes available, this channel is given to the credit remote link adapter that has been waiting the longest for a sole use upstream channel that currently has packets to send.

FIG. 18 is a flow diagram of information exchanges between Hybridware™ server and client, according to conditions in which the client has information to transmit and the server gradually allocates bandwidth to the client. In particular a node first provides a single credit at a selected frequency F. Then a packet is sent, consuming the credit, followed by a completion message indicating use of one credit and potential for an additional transmission corresponding to three credits. Next, a credit is provided corresponding to two packets at the selected frequency F, which is followed by two packet transmissions and a completion message indicating consumption of two credits and potential for transmission of one more. In response, another double credit is sent followed by a single packet and an acknowledgment of transmission of one and potential for no more transmissions.

FIG. 19 is a flow-diagram of information exchanges between Hybridware™ server and client, according to conditions in which the server allocates the client a dedicated channel, the client transmits data and periodically reports to the server with done messages. In particular, a credit indication dedicating a channel at frequency F is provided, followed by 235 packet transmissions. According to prearrangement, a operability indication in the form of a DONE message is provided at an established time indicating potential for five more packet transmissions. The done message indicates completion of 235 packet transmissions as an accounting function. Because the channel is dedicated, further packet transmissions are made without specific further credit allocations.

FIG. 20 is a flow diagram of information exchanges between Hybridware™ server and client, according to conditions in which a dedicated channel is converted into a shared channel. In particular, a credit indication code D indicating a dedicated channel at frequency F is provided, followed by transmission of 235 packets and a credit message stopping channel dedication and switching to a credit mode. Responsive to the credit message a DONE signal accounts for the 235 packets transmitted during the dedicated mode and indicates potential for five more transmissions. This is followed by a credit allocation or one at a selected frequency. Thus, one packet is transmitted, followed by a completion indication specifying potential for four more packets to be transmitted.

What is claimed is:

1. In a two way asymmetric network communication system that includes remote computers having respective interfaces for receiving from a server high speed downstream information conveyed over a downstream channel residing in a shared medium and for transmitting lower speed return information over an upstream channel, and wherein said asymmetric network communication system includes a network management unit located at a headend of

a broadcast facility for effecting control of one of switching and routing functions in each of said downstream and upstream channels, a method of dynamically setting transmit power level of a remote interface comprising:

setting a transmit power level of said remote interface; transmitting from said remote interface at least one indication of said transmit power level; and repeating said steps of setting and transmitting until confirmation of a confirmed transmit power level is received by said remote interface.

2. The method as in claim 1 further comprising the step of: setting said transmit power level of said remote interface to the confirmed transmit power level.

3. The method as in claim 2 further comprising the step of: determining suitability of said confirmed transmit power level.

4. The method as in claim 1 wherein said confirmation comprises a system specified number of consecutive responses from said system.

5. The method according to claim 1, wherein said step of setting a transmit power level comprises the step of:

setting said transmit power level to a power level different from previously set transmit power levels.

6. The method according to claim 1, wherein said step of setting a transmit power level comprises the step of:

setting said transmit power level to a power level higher than previously set transmit power level.

7. In a two way asymmetric network communication system that includes remote computing devices having respective interfaces for receiving from a server high speed downstream information conveyed over a downstream channel on a shared medium and for transmitting lower speed return information over an upstream channel, and wherein said asymmetric network communication system includes a network management unit located at a headend of a broadcast facility for effecting control of one of said switching and routing devices of each of said downstream and upstream channels, a method of dynamically setting transmit power comprising:

detecting an indication of a transmit power level from said remote interface; and

transmitting to said remote interface confirmation of receipt of said power level indication.

8. In a two way asymmetric network communication system that includes remote computing devices having respective interfaces for receiving from a server high speed downstream information over a downstream channel residing in a shared medium and for transmitting lower speed return information over an upstream channel, and wherein said asymmetric network communication system includes a network management unit located at a headend of a broadcast facility for effecting control of one of switching and routing devices of each of said downstream and upstream channels, a method of dynamically setting transmit power level in said system comprising:

at said remote computing device:

(a) setting a transmit power level of said remote interface;

(b) transmitting from said remote interface to one of said switching and routing devices of said upstream channel at least one indication of said transmit power level; and

(c) repeating said steps of setting and transmitting until confirmation of a confirmed transmit power level is received by said remote interface from said one of said switching and routing devices, and

17

at said one of said switching and routing devices of said upstream channel:

- (d) detecting indication of a transmit power level from said remote interface; and
- (e) transmitting to said remote interface confirmation of receipt of said power level indication.

9. The method as in claim 8 further comprising the step of: setting said transmit power level of said remote interface to the confirmed transmit power level.

10. The method as in claim 9 further comprising the step of:

- determining suitability of said confirmed transmit power level.

11. The method as can claim 8 wherein said confirmation comprises a system specified number of consecutive responses from said system.

12. The method according to claim 8, wherein said step of setting a transmit power level comprises the step of:

- setting said transmit power level to a power level different from previously set transmit power levels.

13. A method according to claim 8, wherein said step of setting a transmit power level comprises the step of:

- setting said transmit power level to a power level higher than previously set transmit power level.

14. In a two way asymmetric network communication system that includes remote computing devices having respective interfaces for receiving from a server high speed downstream information over a downstream channel located on a shared medium and for transmitting lower speed return information over an upstream channel, and wherein said asymmetric network communication system includes a network management unit located at a headend of a broadcast facility for effecting control of one of switching and routing devices of each of said downstream and upstream channels, a method of dynamically maintaining upstream communication between a remote interface and a hybrid routing device, the method comprising:

- said remote interface receiving protocol messages from said hybrid routing device and, based on said protocol messages,
- dynamically adjusting a transmit power level of said remote interface.

15. The method as an claim 14 wherein said step of adjusting comprises the steps of:

- setting a transmit power level of said remote interface;
- transmitting from said remote interface to an upstream portion of said routing device at least one indication of said transmit our level; and
- repeating said steps of setting in transmitting until confirmation of a confirmed transmit power level is received by said remote interface from said routing device.

16. The device as in claim 15 wherein said confirmation comprises a system specified number of consecutive responses from said system.

17. The method according to claim 15, wherein the transmit power level setting step includes providing means for setting a transmit power level to a power level different from previously set transmit power levels.

18. The method according to claim 15, wherein the transmit power level setting step includes providing means for setting a transmit power level to a power level higher than previously set transmit power levels.

19. In a two way asymmetric network communication system that includes remote computing devices having respective interfaces for receiving from a server high speed

18

downstream information over a downstream channel located on a shared medium and for transmitting lower speed return information over an upstream channel, and wherein said asymmetric network communication system includes a network management unit located at a headend of a broadcast facility for effecting control of one of switching and routing devices of each of said downstream and upstream channels,

- a device for dynamically setting transmit power level of a remote interface comprising;
- a controller for setting a transmit power level of said interface;
- a transmitter for transmitting from said interface to one of said switching and routing devices of said upstream channel at least one indication of said transmit power level; and
- said controller being repeatedly operated to alter the power level of said remote interface until confirmation of a confirmed transmit power level is received by said interface from said system.

20. The device as in claim 19 further comprising:

- means for setting said transmit power level of said interface to the confirmed transmit power level.

21. The device as in claim 20 further comprising:

- means for determining suitability of said confirmed transmit power level.

22. In a two way asymmetric network communication system that includes remote computing devices having respective interfaces for receiving from a server high speed downstream information over a downstream channel located on a shared medium and for transmitting lower speed return information over an upstream channel, and wherein said asymmetric network communication system includes a network management unit located at a headend of a broadcast facility for effecting control of one of switching and routing devices of each of said downstream and upstream channels, a device for dynamically setting a transmit power level of a remote interface comprising,

- at one of said switching and routing devices of said upstream channel;
- a detector for detecting an indication of a transmit power level of a transmission from said remote interface; and
- a transmitter for transmitting to said remote interface confirmation of receipt of said power level indication.

23. In a two way asymmetric network communication system that includes remote computing devices having respective interfaces for receiving from a server high speed downstream information over a downstream channel located on a shared medium and for transmitting lower speed return information over an upstream channel, and wherein said asymmetric network communication system includes a network management unit located at a headend of a broadcast facility for effecting control of one of switching and routing devices of each of said downstream and upstream channels, a device for dynamically setting a transmit power level of a remote interface comprising,

- at said remote interface
- (a) a controller for setting a transmit power level of said remote interface;
- (b) a transmitter for transmitting from said remote interface to said one of said switching and routing devices of said upstream channel at least one indication of said transmit power level; and
- (c) said controller being repeatedly operated to alter the power level of said remote interface and to transmit until confirmation of a confirmed transmit power level is received by said remote interface from said one of said switching and routing devices, and

19

at said one of said switching and routing devices of said upstream channel:
(d) a detector for detecting an indication of a transmit power level of said remote interface; and
(e) a transmitter for transmitting to said remote interface confirmation of receipt of said power level indication.
24. The device as in claim 23 further comprising:
means for setting said transmit power level of said remote interface to the confirmed transmit power level.
25. The device as in claim 24 further comprising:
means for determining suitability of said confirmed transmit power level.
26. The device has including 24 wherein said confirmation comprises a system specified number of consecutive responses from said system.
27. The device according to claim 23, wherein said means for setting a transmit power level comprises:
means for setting said transmit power level to a power level different from previously set transmit power levels.
28. The device according to claim 23, wherein said means for setting a transmit power level comprises:
means for setting said transmit power level to a power level higher than previously set transmit power level.
29. In a two way asymmetric network communication system that includes remote computing devices having respective interfaces for receiving from a server high speed downstream information over a downstream channel located

20

on a shared medium and for transmitting lower speed return information over an upstream channel, and wherein said asymmetric network communication system includes a network management unit located at a headend of a broadcast facility for effecting control of one of switching and routing devices of each of said downstream and upstream channels, a device for dynamically maintaining communication between a remote interface and at least one of said switching and routing devices, the device comprising:
programmable means for receiving protocol messages from said one of said switching and routing devices including means for, based on protocol messages, dynamically adjusting a transmit power level of said remote interface.
30. The device as in claim 29 wherein said programmable means comprises:
means for setting a transmit power level of said remote interface;
means for transmitting from said remote interface to said one of said switching and routing devices at least one indication of said transmit power level; and
means for repeating the operations of said means for setting and transmitting until confirmation of a confirmed transmit power level is received by said remote interface from said one of said switching and routing devices.

* * * * *

UNITED STATES PATENT AND TRADEMARK OFFICE
Certificate

Patent No. 5,959,997

Patented: September 28, 1999

On petition requesting issuance of a certificate for correction of inventorship pursuant to 35 U.S.C. 256, it has been found that the above identified patent, through error and without any deceptive intent, improperly sets forth the inventorship.

Accordingly, it is hereby certified that the correct inventorship of this patent is: Eduardo J. Moura, San Jose, CA (US); Jan Maksymilian Gronska, Palo Alto, CA (US); Robert L. Packer, Los Gatos, CA (US); and Robert A. Luxenberg, Woodside, CA (US).

Signed and Sealed this Nineteenth Day of September 2006.

SEEMA S. RAO
Supervisory Patent Examiner
Art Unit 2666