



US008656479B2

(12) **United States Patent**  
**Crawford**

(10) **Patent No.:** **US 8,656,479 B2**  
(45) **Date of Patent:** **\*Feb. 18, 2014**

(54) **POLICY-BASED CONTENT FILTERING**

(75) Inventor: **William J. Crawford**, Coquitlam (CA)

(73) Assignee: **Fortinet, Inc.**, Sunnyvale, CA (US)

(\*) Notice: Subject to any disclaimer, the term of this patent is extended or adjusted under 35 U.S.C. 154(b) by 0 days.

This patent is subject to a terminal disclaimer.

(21) Appl. No.: **13/526,510**

(22) Filed: **Jun. 18, 2012**

(65) **Prior Publication Data**

US 2012/0254978 A1 Oct. 4, 2012

**Related U.S. Application Data**

(63) Continuation of application No. 13/114,292, filed on May 24, 2011, now Pat. No. 8,205,251, which is a continuation of application No. 11/283,891, filed on Nov. 22, 2005, now Pat. No. 7,966,654.

(51) **Int. Cl.**

**H04L 29/06** (2006.01)

**G06F 21/00** (2013.01)

(52) **U.S. Cl.**

USPC ..... **726/12**

(58) **Field of Classification Search**

None

See application file for complete search history.

(56) **References Cited**

**U.S. PATENT DOCUMENTS**

7,966,654 B2	5/2007	Crawford
7,284,267 B1	10/2007	McArdle et al.
7,409,709 B2	8/2008	Smith et al.
8,205,251 B2	6/2012	Crawford
2002/0078382 A1	6/2002	Sheikh et al.
2002/0099825 A1	7/2002	Fertell et al.

2003/0115075 A1	6/2003	Zunke et al.
2004/0015725 A1	1/2004	Boneh et al.
2007/0118893 A1	5/2007	Crawford
2010/0138908 A1 *	6/2010	Vennelakanti et al. .... 726/11
2011/0225646 A1	9/2011	Crawford

**OTHER PUBLICATIONS**

Notice of Allowance for U.S. Appl. No. 11/283,891 mailed May 10, 2011.

Final Rejection for U.S. Appl. No. 11/283,891 mailed May 10, 2011.  
Non-Final Rejection for U.S. Appl. No. 11/283,891 mailed Oct. 13, 2009.

Non-Final Rejection for U.S. Appl. No. 13/114,292 mailed Apr. 5, 2012.

(Continued)

*Primary Examiner* — Gilberto Barron, Jr.

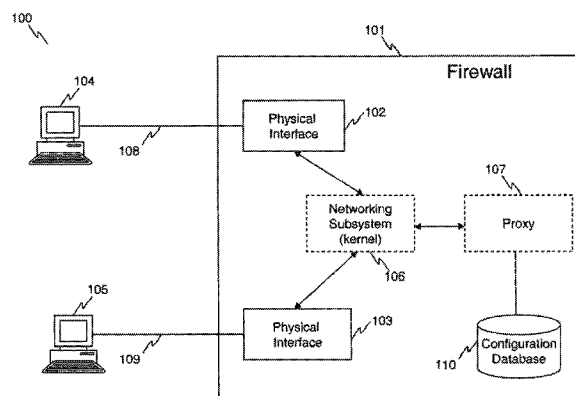
*Assistant Examiner* — Malcolm Cribbs

(74) *Attorney, Agent, or Firm* — Hamilton, DeSanctis & Cha LLP

(57) **ABSTRACT**

Methods and systems for processing application-level content of network service protocols are described. According to one embodiment, a network connection is redirected by a networking subsystem implemented within a kernel of an operating system of a firewall device to a proxy module within the firewall device that is configured to support a network service protocol associated with the network connection. The proxy module retrieves one or more content processing configuration schemes associated with a matching firewall policy for the network service protocol and the network connection. The content processing configuration schemes each include multiple content processing configuration settings for each of one or more network service protocols. Application-level content of a packet stream associated with the network connection is then processed by the proxy module reassembling the application-level content from multiple packets of the packet stream and scanning the application-level content based on the retrieved content processing configuration schemes.

**34 Claims, 9 Drawing Sheets**



(56)

**References Cited**

OTHER PUBLICATIONS

Notice of Allowance for U.S. Appl. No. 13/114,292 mailed May 7, 2012.

Wack et al., "Guidelines on Firewalls and Firewall Policy." Recommendations of the National Institute of Standards and Technology. NIST Special Publication 800-41, Jan. 2002, 74 pages.

\* cited by examiner

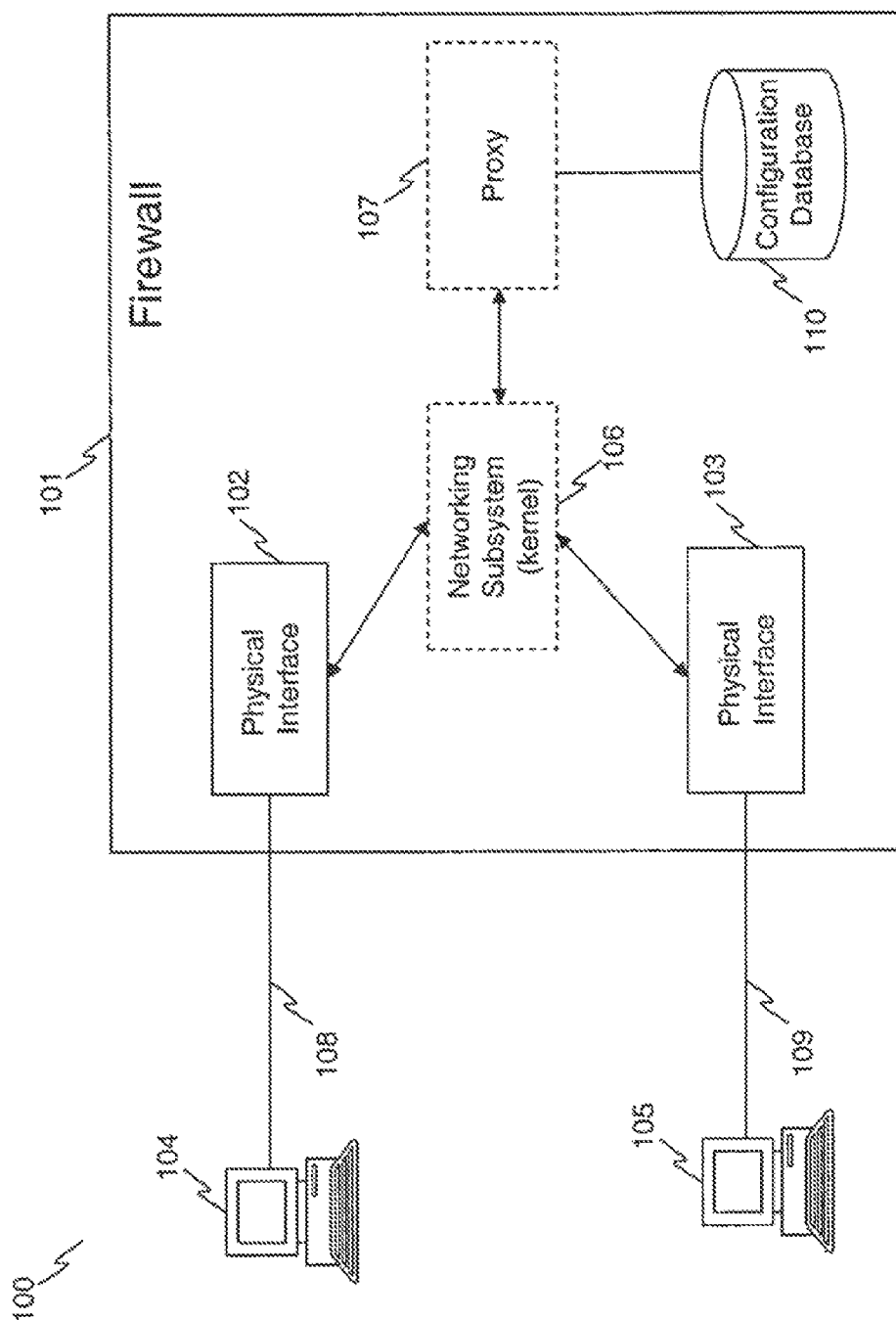


Figure 1

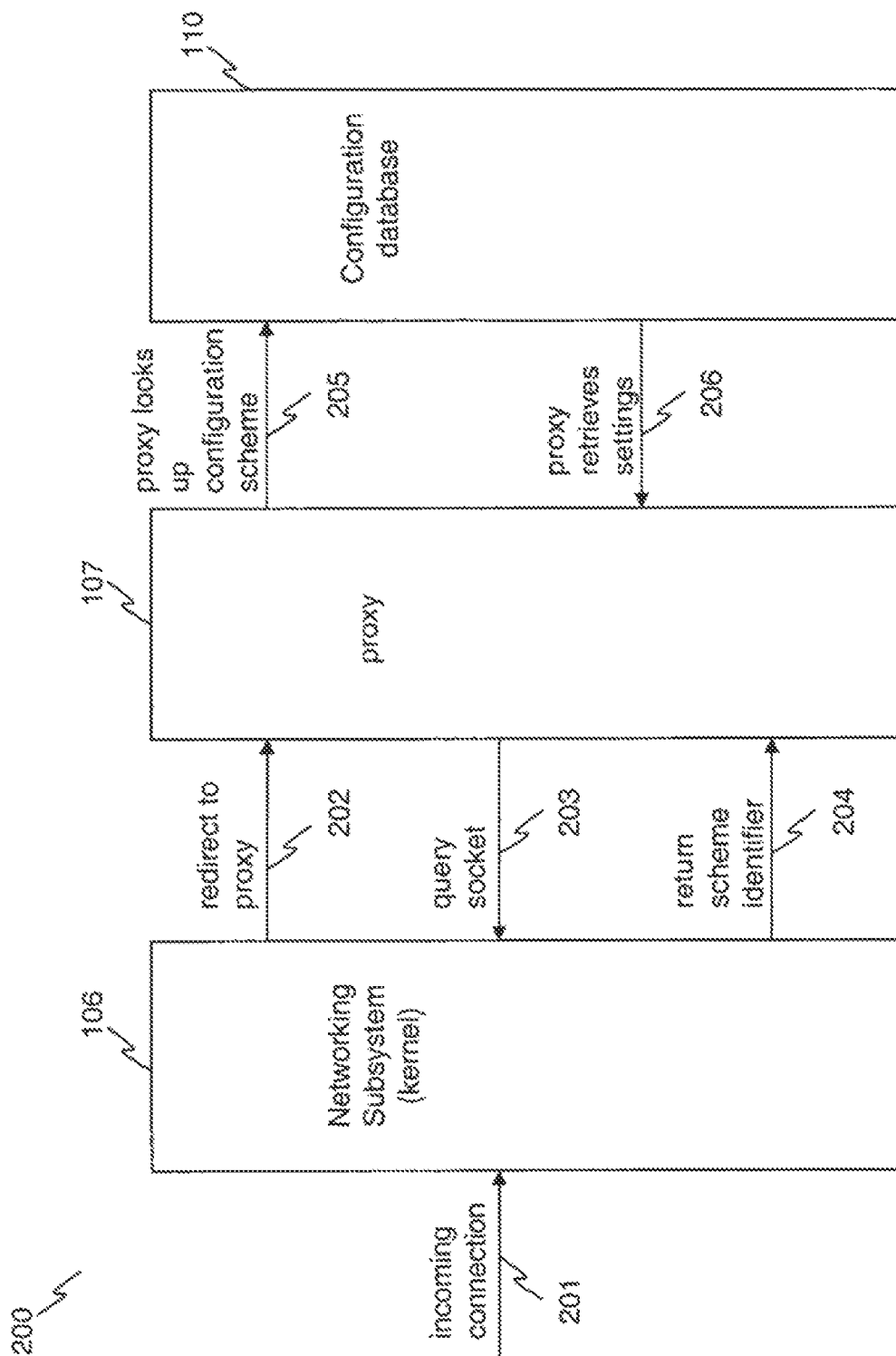


Figure 2



500

Policy		To Port						External
ID	Source	Destination	Schedule	Service	Action	Configuration Scheme	Enable	Options
501 1	Internal_all	External_all	Always	Http	Allow	Scheme 3	<input type="checkbox"/>	Modify Delete
502 2	MachineA	External_all	Always	Ftp	Allow	Scheme 2	<input type="checkbox"/>	Modify Delete
503 5	Internal_all	External_all	Always	Any	Allow	Scheme 1	<input type="checkbox"/>	Modify Delete
...	...	...	...	...	...	...	...	...

Create

Figure 5

600

Policy	1
Source	Internal_All
Destination	External_All
Schedule	Always
Service	Any
Action	Allow
Configuration Scheme	Scheme 1
...	

Figure 6

700

Config Name	703 HTTP Service	704 SMTP Service	705 IMAP Service	706 POP3 Service	707 FTP Service	708 Options
701 Strict	Banned Word [x] Url Block [x] AV Scan [x] File Block [x] ...	AV Scan [x] File Block [x] Frag Email [] Pass [] Spam block [x] ...	AV Scan [x] File Block [x] Frag Email [] Pass [] Spam block [x] ...	AV Scan [x] File Block [x] Frag Email [] Pass [] Spam block [x] ...	AV Scan [x] File Block [x] ...	Modify, Delete
702 Scan	Banned Word [x] Url Block [x] AV Scan [x] File Block [] ...	AV Scan [x] File Block [] Frag Email [] Pass [] Spam block [] ...	AV Scan [x] File Block [] Frag Email [] Pass [] Spam block [] ...	AV Scan [x] File Block [] Frag Email [] Pass [] Spam block [] ...	AV Scan [x] File Block [] ...	Modify, Delete
...						
None						

Figure 7

800

HTTP

☐ Anti Virus Scan (details)

☐ Filename Block (details)

☐ Banned Words (details)

☐ URL block (details)

SMTP

☐ Anti Virus Scan (details)

☐ Filename Block (details)

☐ Pass Fragmented emails

IMAP

☐ Anti Virus Scan (details)

☐ Filename Block (details)

☐ Pass Fragmented emails

POP3

☐ Anti Virus Scan (details)

☐ Filename Block (details)

☐ Pass Fragmented emails

FTP

☐ Anti Virus Scan (details)

☐ Filename Block (details)

801

802

803

Set As Default

OK

Cancel

Figure 8



Figure 9

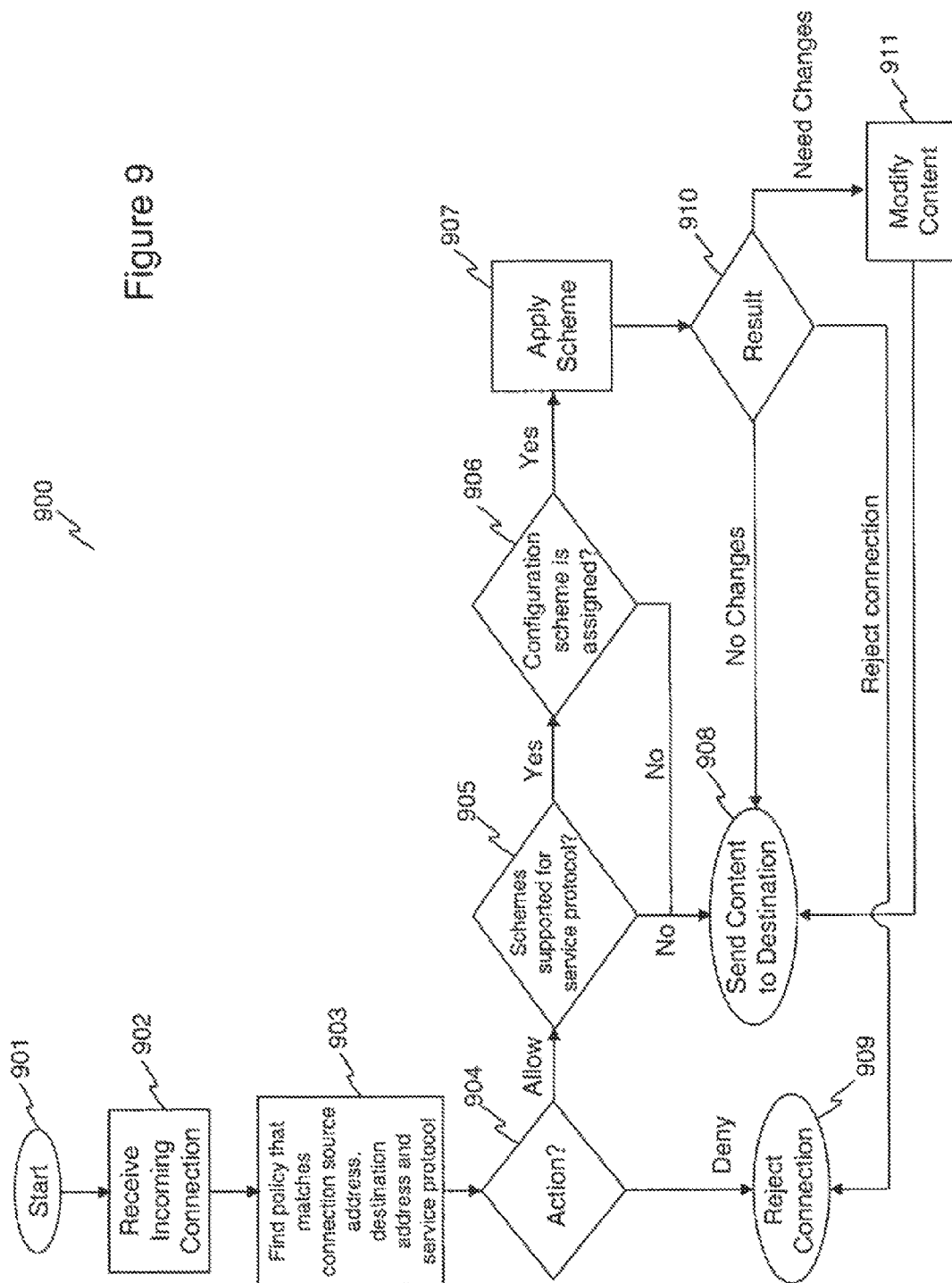
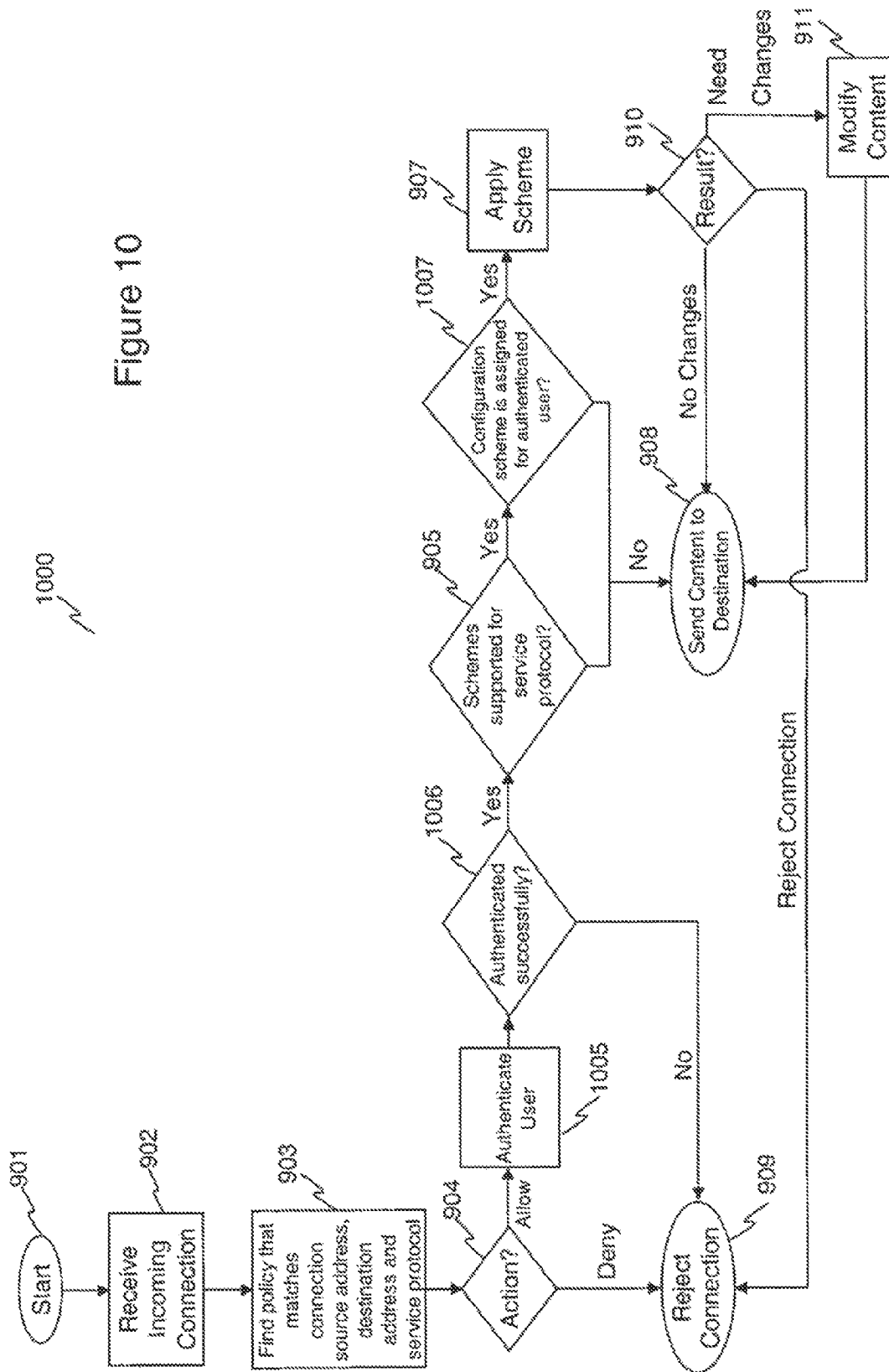


Figure 10



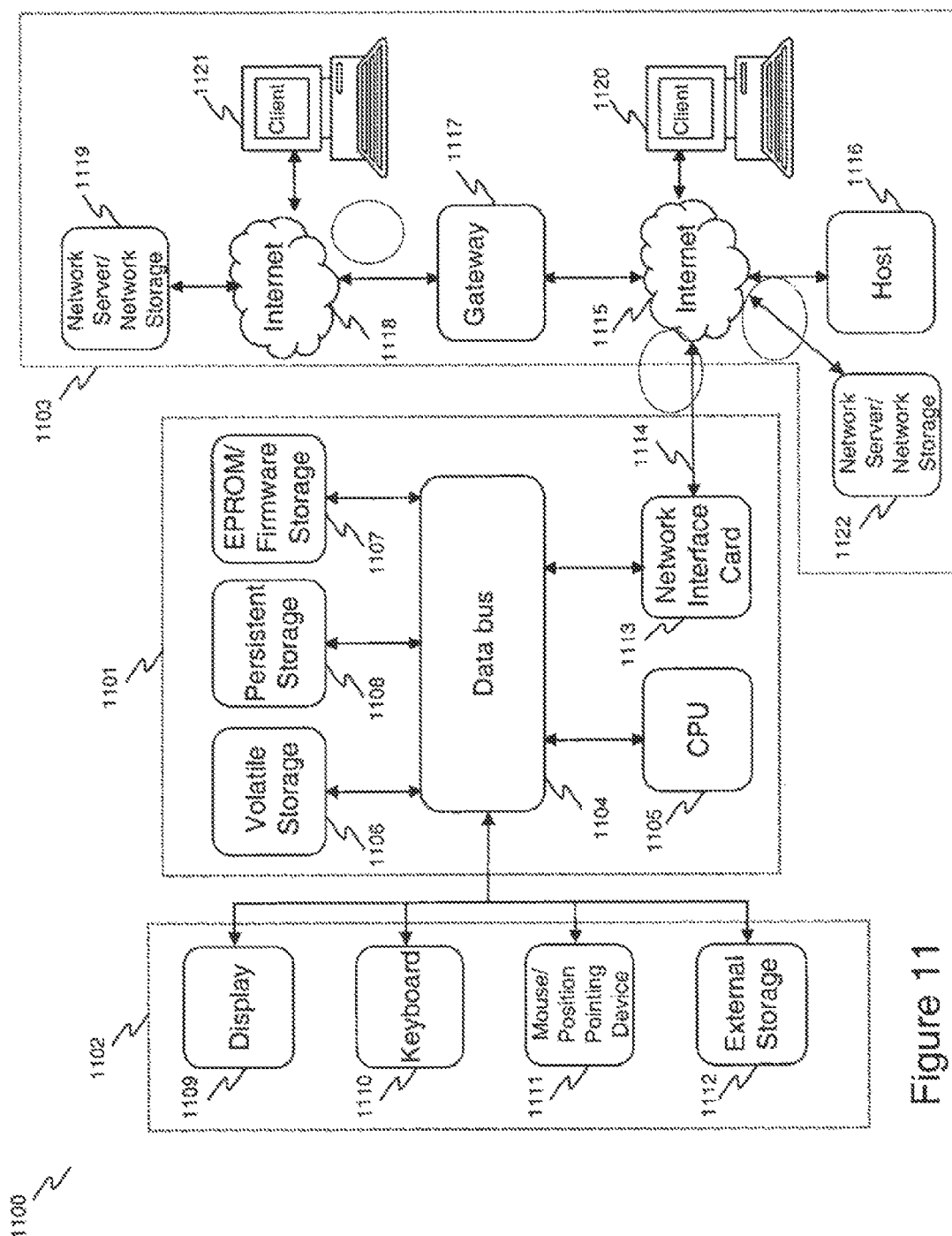


Figure 11

**POLICY-BASED CONTENT FILTERING****CROSS-REFERENCE TO RELATED APPLICATIONS**

This application is a continuation of U.S. patent application Ser. No. 13/114,292 filed on May 24, 2011, now U.S. Pat. No. 8,205,251, which in turn is a continuation of U.S. patent application Ser. No. 11/283,891 filed on Nov. 22, 2005, now U.S. Pat. No. 7,966,654, each of which is hereby incorporated by reference in its entirety for all purposes.

**COPYRIGHT NOTICE**

Contained herein is material that is subject to copyright protection. The copyright owner has no objection to the facsimile reproduction of the patent disclosure by any person as it appears in the Patent and Trademark Office patent files or records, but otherwise reserves all rights to the copyright whatsoever. Copyright © 2005-2011, Fortinet, Inc.

**BACKGROUND****1. Field**

Embodiments of the present invention generally relate to network security. In particular, embodiments of the present invention relate to application-level content processing of network service protocols using a firewall.

**2. Description of the Related Art**

Security threats have evolved dramatically over the past 10 years, moving from network-level, connection-oriented attacks to application-level, agent-based attacks. Conventional networking devices (firewalls) can deal with network-level packet processing; for example, conventional firewalls can stop packets that do not come from a valid source, and VPN gateways can encrypt packets on the fly, making it safe for them to traverse the Internet.

But today's critical network threats, like viruses and worms, are embedded in the application-level contents of packet streams. Enormous processing power is needed to detect and stop these application-layer threats by extracting the content from multiple packets, reconstructing the original content, and scanning it for the telltale signs of attacks or for inappropriate content.

A firewall is typically implemented as a hardware/software appliance having a number of physical networking interfaces for the incoming and outgoing network traffic. Firewalls can be software-implemented and installed on a stand-alone computer, or they can be full-blown hardware appliances placed in a network to filter traffic going between multiple computers and/or the Internet. Network traffic enters one of these interfaces and, after filtering and other appropriate processing, is routed to a remote host typically attached to a different physical interface.

In a firewall, processing of network traffic is performed in accordance with a set of specific rules, which collectively form a firewall policy. The firewall policy dictates how the firewall should handle network traffic associated with specific applications such as web browsers, email or telnet. Exemplary rules include filtering of banned words, blocking specific URLs, blocking transmission of specific file types, anti-virus scans, blocking of spam, etc. The firewall policy is usually created by the network administrator and is based on the information security policy of the respective organization.

Conventional firewalls were capable of blocking traffic at the packet level but were not intelligent enough to examine the content of those packets and to protect against applica-

tion-layer threats. Modern firewalls have the ability to examine the content of various network traffic streams and appropriately react to threats transferred within the content of the traffic stream. With the growth of these abilities of the firewalls, there has also been a growth in the number of options and settings that an administrator would need to configure to ensure a secure network.

Many existing firewall systems use global configuration settings, such as global lists of URLs to block, lists of spam addresses, options to scan for viruses, spam, and others similar parameters. These settings are applied globally to all policies within the firewall.

This approach, however, does not provide much flexibility to the administrator. For example it may be desirable to block general staff members of an organization from accessing certain websites that don't necessarily contain objectionable material but may be a work distraction. On the other hand, staff managers may not need to be restricted from accessing the same websites. Using global configuration options to enable the above firewall configuration presents a difficult task. In other words, the existing firewall systems, which are often configured using global settings, tend to apply the same firewall configuration scheme to all the network content passing through the firewall.

Therefore, what is needed is a firewall system providing a flexible and effective control over configuration parameters applied to filtering and/or processing of various network content. Such a system would achieve an optimal content processing performance without compromising the security of the protected network.

**SUMMARY**

Methods and systems are described for processing application-level content of network service protocols. According to one embodiment, a network connection is redirected by a networking subsystem implemented within a kernel of an operating system of a firewall device to a proxy module within the firewall device that is configured to support a network service protocol associated with the network connection. The proxy module retrieves one or more content processing configuration schemes associated with a matching firewall policy for the network service protocol and the network connection. The content processing configuration schemes each include multiple content processing configuration settings for each of one or more network service protocols. Application-level content of a packet stream associated with the network connection is then processed by the proxy module reassembling the application-level content from multiple packets of the packet stream and scanning the application-level content based on the retrieved content processing configuration schemes.

Other features of embodiments of the present invention will be apparent from the accompanying drawings and from the detailed description that follows.

**BRIEF DESCRIPTION OF THE DRAWINGS**

Embodiments of the present invention are illustrated by way of example, and not by way of limitation, in the figures of the accompanying drawings and in which like reference numerals refer to similar elements and in which:

FIG. 1 depicts a conceptual block-diagram of a firewall system in accordance with an embodiment of the present invention.

FIG. 2 illustrates an operating sequence of a firewall system to establish a basic network communication session in accordance with an embodiment of the present invention.

FIGS. 3 and 4 illustrate graphical user interface screen shots, which may be used to define one or more configuration schemes in accordance with various embodiments of the present invention.

FIGS. 5 and 6 illustrate graphical user interface screen shots for displaying and adjusting parameters of firewall policies in accordance with various embodiments of the present invention.

FIGS. 7 and 8 illustrate graphical user interface screen shots in accordance with alternative embodiments of the present invention.

FIG. 9 is a flow diagram illustrating network content processing in accordance with an embodiment of the present invention.

FIG. 10 is a flow diagram illustrating network content processing in accordance with an alternative embodiment of the present invention.

FIG. 11 illustrates a computer platform with which embodiments of the present invention may be employed.

#### DETAILED DESCRIPTION

Methods and systems are described for processing application-level content of network service protocols. In the following detailed description, reference will be made to the accompanying drawing(s), in which identical functional elements are designated with like numerals. The aforementioned accompanying drawings show by way of illustration, and not by way of limitation, specific embodiments and implementations consistent with principles of the present invention. These implementations are described in sufficient detail to enable those skilled in the art to practice the invention and it is to be understood that other implementations may be utilized and that structural changes and/or substitutions of various elements may be made without departing from the scope and spirit of present invention. The following detailed description is, therefore, not to be construed in a limited sense. Additionally, the various embodiments of the invention as described may be implemented in the form of a software running on a general purpose computer, in the form of a specialized hardware, or combination of software and hardware.

Embodiments of the present invention are directed to methods and systems that substantially obviate one or more of the above and other problems associated with conventional techniques for configuring firewalls to filter and/or otherwise process network content.

The inventor recognized that it would have been advantageous to provide methods and systems, which would enable more granular control over firewall settings. Such configuration flexibility was not permitted under the conventional techniques.

Firewalls and other filtering gateways have become common security devices for improving computer network security. As more features and functionality are added to these devices they become quite complex to configure. By associating configuration schemes with firewall policies, configuration can be simplified without compromising flexibility. Administrators have more options to filter different traffic streams based on their type and sources. They also have increased flexibility to be able to filter traffic on a per user basis, through authentication mechanisms tied to various filtering options.

Generally, firewall policies are designed to control the flow of network traffic through the firewall. A typical firewall policy defines a set of rules applied to handling of the entire passing network traffic or any specific portion thereof. The portion of the network traffic to which a predetermined firewall policy applies may be specified using, for example, the network address of the source entity, the network address of the destination entity as well as the networking protocol used in the transmission. Different firewall policies may be assigned to different transmission protocols, which, in turn, implement different networking services.

When a specific network connection is initiated, the connection will commonly have an associated source network address, destination network address and service port identifier. This information is gathered by the firewall and checked against existing firewall policies. If the connection information matches a specific firewall policy, the firewall applies the relevant policy to the connection.

Low-level, network layer firewalls generally may only permit or reject the network traffic, typically at the network packet level, and they make their decisions based on the source and destination addresses and the associated network ports in individual IP packets. In such firewalls, the set of rules associated with the firewall policy may generally specify which network traffic is permitted to proceed and which is rejected and the firewall policy may be defined in terms of source and destination IP addresses together with the associated communication ports. This information is contained in individual IP packets and is retrieved by the firewall upon packet inspection.

Higher-level, content-filtering application layer firewalls generally are hosts running proxy servers, which permit no traffic directly between networks, and which perform elaborate logging and auditing of traffic passing through them. Because the proxy applications are software components running on the firewall, they are used to perform logging and access control. In such systems, the firewall policy may provide an additional option for handling of the network traffic, which may include re-directing specific packets to another routine or program, such as a proxy, which may perform a specified operation upon the packets or gather the content of the packets for deeper examination and/or logging. Because of the greater flexibility of the network traffic processing in the proxy, the configuration of the proxy may involve a substantial number of configuration parameters.

In accordance with an embodiment of the invention, in a firewall system having the ability to redirect the communication stream to the proxy program, each firewall policy is provided with an associated collection of settings. These settings may generally include, but are not limited to, various types of filters. By having the ability to associate a collection of settings (hereinafter referred to as "configuration scheme") with individual firewall policies, the administrator of the inventive firewall system has a greater control over how various communication pathways are filtered.

In an exemplary embodiment of the inventive firewall system, a configuration scheme is associated with a specific firewall policy by means of a scheme identifier, a variable, comprising numeric information, character information or binary bits, that is stored in a data structure associated with the firewall policy, which is called a "policy structure." The policy structure may be disposed within the kernel of the firewall computer system. When a new communication session matching a particular firewall policy is initiated, this session inherits the scheme identifier value from the corresponding policy structure. The proxy program, to which the communication connection is redirected, then retrieves this

5

identifier value from the communication connection structure and uses it to look up the scheme settings from the configuration database or, alternatively, from a local cache. The configuration database in the inventive system may be as simple as a text file holding records of information or as complex as a fully featured database system.

FIG. 1 illustrates a topology of a firewall-protected network 100 in accordance with an embodiment of the present invention. Two network entities 104 and 105 are connected to opposite sides of a physical device (the firewall) 101, which monitors the network traffic 108, 109 passing between them. The firewall 101 may drop or alter some of this traffic based on a predefined set of rules. Therefore, the content of the network traffic 108 may not be identical to the content of the traffic 109. According to an embodiment of the inventive technique, the two network entities 104 and 105 are connected to the firewall 101 by a direct link. In an alternative embodiment, the connection is accomplished through a routed network (not shown).

As shown in FIG. 1, the firewall 101 is disposed within the network communication channel between the two user systems 104 and 105 and monitors network packet exchanges between them. As would be appreciated by those of skill in the art, for some well-known protocols, such as TCP, the transmitted network packets can be inspected for known threats or questionable content by one or more scanning engines. When a packet that matches one of the known signatures is detected, the inventive firewall system may generate a log message or set off an alarm, and the packet may be dropped. In one embodiment of the inventive system, the entire connection between the two users would be dropped as well.

As would be also appreciated by those of skill in the art, in many cases, the rules or signatures used to detect questionable data cannot be applied to individual packets.

Stream protocols, such as TCP, will break up data into smaller chunks during transmission, but the detection heuristics must be applied to the entire data stream rather than the individual packets. Therefore, in the inventive system, the data would be first buffered by the firewall 101 in order to extract the data stream, and then the filtering rules would be applied to this stream. In many cases, the packets would be redirected by the networking subsystem 106 of the kernel of the firewall 101 to a user space application (proxy) 107 that builds and interprets the data buffer.

The firewall system shown in FIG. 1 includes physical network interfaces 102 and 103, and the aforesaid networking subsystem 106, which may be implemented as a part of the kernel of the operating system of the firewall appliance 101. The networking subsystem 106 routes the packets between the physical interfaces 102 and 103 and transfers the data between various logical subsystems on the firewall system 101. Several types of stream-based data are intercepted by the networking subsystem 106 and buffered by a proxying module 107 for future processing. It should be noted that while FIG. 1 shows only physical interfaces, in another embodiment of the inventive firewall, one or both of the interfaces 102 and 103 may be logical interfaces.

The networking subsystem 106 may be configured to intercept data transmissions formatted in accordance with various networking protocols including, without limitation, Server Message Block/Common Internet File System (SMB/CIFS), instant messaging (IM) protocols (e.g., AOL Instant Messenger (AIM), MICROSOFT Network (MSN) messenger, YAHOO! Messenger, SKYPE), and peer-to-peer (P2P) protocols (e.g., FASTTRACK, BEEP, GNUTELLA, AVA-LANCHE, BITTORRENT). Additionally, Simple Mail Transfer Protocol (SMTP), Post Office Protocol 3 (POP3),

6

Internet Message Access Protocol (IMAP), HyperText Transfer Protocol (HTTP), File Transfer Protocol (FTP), telnet, etc. The intercepted data packets are routed to the proxy module 107 for re-assembly, inspection and other processing.

In one embodiment of the invention, the proxying module 107 is implemented in the OS kernel. In an alternative embodiment, the proxy 107 is implemented in the form of an application executing in the user space provided by the operating system of the firewall appliance 101. The proxying module 107 assembles the formatted packets intercepted by the networking subsystem 106 in accordance with the specification of the respective communication protocol to arrive at the transmission content. Depending on the specifics of the used communication protocol, an embodiment of the inventive system may provide for re-ordering of the data packets prior to, or during the transmission re-assembly.

A configuration database 110 stores various firewall policies, configuration schemes and other parameters used by the firewall system 101. The stored parameters are retrieved from the database 110 by the proxy 107. In one embodiment of the inventive system, the proxying module 107 is configured to support one network protocol. In such implementation, multiple proxying subsystems may be provided if the system is designed to handle multiple protocols. Additionally or alternatively, multiple instances of proxy 107 may be executed to support the same network protocol or different network protocols. Moreover, the proxy 107 may be designed to support the entire communication language of the respective protocol or any portion thereof. Finally, the proxy 107 may use an external program to retrieve various configuration settings from the database 110. Likewise, an external program may be used to apply various filters to the network transmission content processed by the proxy 107.

FIG. 2 illustrates an operating sequence of the inventive firewall system associated with establishment of a basic network communication session. An incoming connection 201 is accepted by the networking subsystem 106 of the firewall kernel after a lookup of an applicable firewall policy. In the shown sequence, the policy indicates that the session should be redirected (at 202) to the user level proxy 107. The proxy 107 performs any needed initialization and then queries the kernel (at 203) to retrieve the configuration scheme associated with the session. Once the scheme identifier has been retrieved (at 204) the proxy queries (at 205) the configuration database (110) to retrieve the settings for the configuration scheme matching the specified identifier. Once the settings are retrieved (at 206) the proxy 107 can continue with any filtering tasks or other tasks necessary to handle the networking session.

In an embodiment of the inventive concept, multiple configuration schemes may be specified by the network administrator using, for example, a graphical user interface or a command line interface of the firewall system 101. The settings specified by the administrator, as well as other appropriate parameters, may be stored in the configuration database 110 for subsequent retrieval. In an exemplary embodiment of the inventive technique, each created configuration scheme is assigned a unique identifier value, which may or may not be displayed to the administrator. This identifier value is subsequently stored in one or more data structures associated with the corresponding firewall policy and used to retrieve the appropriate configuration scheme.

The configuration database 110 may be implemented on the same computer platform as the rest of the firewall 101. This database may be implemented using any suitable database system, such as general-purpose relational database systems distributed by ORACLE Corporation, IBM Corporation

7

and MICROSOFT Corporation. In an alternative embodiment of the invention, a special-purpose embedded database may be utilized. In yet alternative embodiment, the configuration database may be implemented using file system facilities of the firewall **101**. Finally, the database system **110** may be implemented on separate computer hardware from the rest of the firewall **101**.

FIGS. **3** and **4** display exemplary embodiments of a graphical user interface which may be used by an administrator of the inventive firewall system in defining one or more configuration schemes. Specifically, the interface **300** shown in FIG. **3** displays a list of existing configuration schemes **301-304**. Each of the schemes **301-304** may be assigned a unique name or alias for easy reference. Using the interface **300**, new schemes may be created and the existing schemes may be modified or deleted.

The interface **400** shown in FIG. **4** displays a detailed view of a specific configuration scheme. The displayed exemplary scheme **400** is arranged into separate protocol sections (columns **401-406**). Each such section may include multiple configuration settings corresponding to the specific protocol. The protocols shown in FIG. **4** include HTTP, FTP, SMTP, IMAP, POP3, SMB/CIFS. However, the invention is not limited only to the shown protocols. Any other suitable protocols may be used. Normally, the inventive interface **400** only displays protocols supported by the proxy engine **107** of the firewall **101**. However, as the proxy functionality is expanded to support additional networking protocols, the graphical user interface **400** may be configured, either manually or automatically, to display those additional protocols as well.

As will be appreciated by those of skill in the art, not all configuration settings are appropriate for all protocols. Therefore, in the inventive interface **400**, some settings are not available for some protocols. For example, the e-mail spam block is not available for non-email protocols. Various parameters of the specific configuration scheme displayed using the interface **400** may be input or adjusted by the network administrator by means of toggle options (checkboxes), named selections (drop down combo boxes), multi-selections, as well as number and text based entries. The configuration scheme may include lists of various items, such as lists of banned words or lists of HTTP URLs to be blocked. Such lists may be linked to appropriate graphical primitive(s) within the interface **400**, such as items **408-410** shown in FIG. **4**. Upon administrator's selection of the appropriate graphical primitive, the corresponding list may be displayed and the administrator may be provided with an ability to add to or otherwise modify its content.

As it would be appreciated by those of skill in the art, the inventive concept is by no means limited only to the shown parameters and settings. Various other settings and parameters may be displayed and appropriately configured by the interfaces **300** and **400**. Moreover, the interface **400** may be configured to automatically display new parameters and configuration options when it detects that the proxy module **107** of the firewall **101** has been enhanced to support new protocols as well as new filtering and other content processing capabilities.

In addition to the capability to create and/or modify firewall configuration schemes, an embodiment of the present invention is additionally provided with a graphical user interface or, alternatively, a command line interface enabling an administrator to specify and manage multiple firewall policies. The policy settings may also be stored in the configuration database **110**. In an embodiment of the invention, at least a portion of information descriptive of the policy settings is stored in the kernel of the firewall **101**.

8

Exemplary embodiments of the policy-setting graphical user interfaces of the inventive firewall system **101** are illustrated in FIGS. **5** and **6**. Specifically, exemplary interface **500** shown in FIG. **5** displays a list of all firewall policies in effect. The shown interface **500** is organized in a tabular form with each of the rows **501**, **502** and **503** corresponding to firewall policies with policy identification numbers **1**, **2** and **5**, respectively. Parameters in columns **504**, **505** and **507** specify source network address, destination network address and transmission protocol to which specific listed policy is made applicable. Column **506** specifies when the specific policy has effect. Column **508** contains settings specifying how the corresponding network traffic should be handled. The configuration scheme for each effective policy is specified in column **509**. The network administrator is provided with an option to enable or disable any specific policy and to modify or delete it, see columns **510** and **511**.

FIG. **6** illustrates graphical user interface **600** for displaying and adjusting various individual parameters of a specific firewall policy. The policy parameters included in the interface **600** generally correspond to the columns of interface **500**. Using the interface **600**, the administrator may modify any appropriate policy settings.

As described in details above, any specific firewall policy may be provided with an associated configuration scheme such that networking protocols supported by the policy are filtered or otherwise processed in accordance with the settings of that configuration scheme. The relevant configuration scheme is identified and assigned to a session when the session is created. At that point, the configuration scheme identifier is written into the policy structure in the kernel so that it can be transferred into new session structures as new sessions connect. If more than one policy is defined, different policies may use either the same configuration scheme, all different configuration schemes, or any combination of the above. It is also permissible, in an embodiment of the invention, to apply no configuration scheme to a policy. In such a case, the policy becomes a conventional firewall policy with no filtering capabilities. In another embodiment of the invention, multiple configuration schemes may be assigned to a single firewall policy.

In another embodiment of the invention, the policy-based filters are implemented using user-authenticated groups. Specifically, certain firewall policies may utilize some form of user authentication. To enable utilization of such policies, one or more users on the network may be grouped together into one or more named groups of users, for example Accounting Team. It should be noted that certain groups may consist of only one user. A specific firewall configuration scheme may be assigned to a user group or an individual user. As would be appreciated by those of skill in the art, the utilization of user group-based firewall policies and associated configuration schemes enables flexible assignment of different levels of use restrictions of various network services to different groups of users.

FIGS. **7** and **8** illustrate an alternative embodiment of the user interface of the inventive firewall system. In the interface shown in FIG. **7**, multiple configuration schemes are displayed on the same page together with their parameters. Each of the rows **701** and **702** corresponds to a specific configuration scheme, while each of the columns **703-707** displays settings corresponding to one specific networking protocol. On the other hand, the interface **800** shown in FIG. **8** may be used to edit various parameters associated with a specific configuration scheme. In the interface **800**, shown in that figure, various protocols are grouped together in accordance with protocol type, including web protocol **801**, mail proto-

9

cols **802** and file transfer protocol **803**. The configuration scheme parameters displayed in FIG. **8** generally correspond to parameters included in each of the rows **701** or **702** of FIG. **7**.

FIG. **9** illustrates exemplary operating sequence **900** of an embodiment of the inventive firewall system **101**. Upon the receipt of the incoming connection, at step **902**, the inventive firewall system **101** uses the connection information to identify the applicable firewall policy, see step **903**. The relevant connection information may include, without limitation, the connection source and destination addresses, as well as connection service protocol determined in accordance to the connection port number information. The necessary connection information may be extracted from the network packets intercepted by the networking subsystem **106** of the kernel.

At step **904**, the system applies packet-layer firewall rules to determine whether the connection should be allowed. Non-compliant connections are rejected at step **909**. The allowed connections are checked against a list of service protocols supported by the proxy **107**, see step **905**. Content formatted according to non-supported protocols is sent directly to the destination, at step **908**. If the connection protocol is supported by the proxy **107**, at step **906**, the system checks whether a specific configuration scheme is assigned to the connection, and, if so, applies the scheme at step **907**. At step **910**, the system checks whether the transmission content needs to be modified and modifies the content, if appropriate, at step **911**.

FIG. **10** illustrates an exemplary operating sequence **1000** of an alternative embodiment of the inventive firewall system **101**. The sequence **1000** differs from the sequence **900** of FIG. **9** in applying additional authentication steps **1005** and **1006** to the networking connection. Specifically, upon determination, at step **904**, that the connection satisfies the packet-layer rules, the system authenticates the user and rejects the connection if the authentication fails, see steps **1005** and **1006**, respectively. In addition, in the sequence shown in FIG. **10**, at step **1007**, the inventive system checks for a configuration scheme assigned to the user/usergroup, which, in turn, corresponds to the firewall policy that applies to the current connection. The found scheme is then applied at step **907**. The remaining steps of the sequence **1000** are equivalent to the corresponding steps of the sequence **900** of FIG. **9**.

An example of a hardware platform in accordance with an embodiment of the present invention will now be described. FIG. **11** is a block diagram that illustrates an embodiment of a computer platform **1100** upon which an embodiment of the inventive methodology may be implemented. The system **1100** includes a computer/server platform **1101**, peripheral devices **1102** and network resources **1103**.

The computer platform **1101** may include a data bus **1104** or other communication mechanism for communicating information across and among various parts of the computer platform **1101**, and a processor **1105** coupled with bus **1101** for processing information and performing other computational and control tasks. Computer platform **1101** also includes a volatile storage **1106**, such as a random access memory (RAM) or other dynamic storage device, coupled to bus **1104** for storing various information as well as instructions to be executed by processor **1105**. The volatile storage **1106** also may be used for storing temporary variables or other intermediate information during execution of instructions by processor **1105**. Computer platform **1101** may further include a read only memory (ROM or EPROM) **1107** or other static storage device coupled to bus **1104** for storing static information and instructions for processor **1105**, such as basic input-output system (BIOS), as well as various sys-

10

tem configuration parameters. A persistent storage device **1108**, such as a magnetic disk, optical disk, or solid-state flash memory device is provided and coupled to bus **1101** for storing information and instructions.

Computer platform **1101** may be coupled via bus **1104** to a display **1109**, such as a cathode ray tube (CRT), plasma display, or a liquid crystal display (LCD), for displaying information to a system administrator or user of the computer platform **1101**. An input device **1110**, including alphanumeric and other keys, is coupled to bus **1101** for communicating information and command selections to processor **1105**. Another type of user input device is cursor control device **1111**, such as a mouse, a trackball, or cursor direction keys for communicating direction information and command selections to processor **1104** and for controlling cursor movement on display **1109**. This input device typically has two degrees of freedom in two axes, a first axis (e.g., x) and a second axis (e.g., y), that allows the device to specify positions in a plane.

An external storage device **1112** may be connected to the computer platform **1101** via bus **1104** to provide an extra or removable storage capacity for the computer platform **1101**. In an embodiment of the computer system **1100**, the external removable storage device **1112** may be used to facilitate exchange of data with other computer systems.

Embodiments of the invention relate to the use of computer system **1100** for implementing the techniques described herein. In an embodiment, the inventive content processing systems **300** and **400** may reside on a machine such as computer platform **1101**. In an embodiment, database **313** may be deployed on a machine such as computer platform **1101**. According to one embodiment of the invention, the techniques described herein are performed by computer system **1100** in response to processor **1105** executing one or more sequences of one or more instructions contained in the volatile memory **1106**. Such instructions may be read into volatile memory **1106** from another computer-readable medium, such as persistent storage device **1108**. Execution of the sequences of instructions contained in the volatile memory **1106** causes processor **1105** to perform the process steps described herein. In alternative embodiments, hard-wired circuitry may be used in place of or in combination with software instructions to implement the invention. Thus, embodiments of the invention are not limited to any specific combination of hardware circuitry and software.

The term "computer-readable medium" as used herein refers to any medium that participates in providing instructions to processor **1105** for execution. The computer-readable medium is just one example of a non-transitory machine-readable medium, which may carry or otherwise embody instructions for implementing any of the methods and/or techniques described herein. Such a medium may take many forms, including but not limited to, non-volatile media and volatile media. Non-volatile media includes, for example, optical or magnetic disks, such as storage device **1108**. Volatile media includes dynamic memory, such as volatile storage **1106**.

Common forms of non-transitory computer-readable media include, for example, a floppy disk, a flexible disk, hard disk, magnetic tape, or any other magnetic medium, a CD-ROM, any other optical medium, punchcards, papertape, any other physical medium with patterns of holes, a RAM, a PROM, an EPROM, a FLASH-EPROM, a flash drive, a memory card, any other memory chip or cartridge.

Various forms of computer readable media may be involved in carrying one or more sequences of one or more



## 11

instructions to processor **1105** for execution. For example, the instructions may initially be carried on a magnetic disk from a remote computer.

Alternatively, a remote computer can load the instructions into its dynamic memory and send the instructions over a telephone line using a modem. A modem local to computer system **1100** can receive the data on the telephone line and use an infrared transmitter to convert the data to an infrared signal. An infrared detector can receive the data carried in the infrared signal and appropriate circuitry can place the data on the data bus **1104**. The bus **1104** carries the data to the volatile storage **1106**, from which processor **1105** retrieves and executes the instructions. The instructions received by the volatile memory **1106** may optionally be stored on persistent storage device **1108** either before or after execution by processor **1105**. The instructions may also be downloaded into the computer platform **1101** via Internet using a variety of network data communication protocols well known in the art.

The computer platform **1101** also includes a communication interface, such as network interface card **1113** coupled to the data bus **1104**. Communication interface **1113** provides a two-way data communication coupling to a network link **1114** that is connected to a local network **1115**. For example, communication interface **1113** may be an integrated services digital network (ISDN) card or a modem to provide a data communication connection to a corresponding type of telephone line. As another example, communication interface **1113** may be a local area network interface card (LAN NIC) to provide a data communication connection to a compatible LAN. Wireless links, such as well-known 802.11a, 802.11b, 802.11g and Bluetooth may also be used for network implementation. In any such implementation, communication interface **1113** sends and receives electrical, electromagnetic or optical signals that carry digital data streams representing various types of information.

Network link **1113** typically provides data communication through one or more networks to other network resources. For example, network link **1114** may provide a connection through local network **1115** to a host computer **1116**, or a network storage/server **1117**. Additionally or alternatively, the network link **1113** may connect through gateway **1117** to the wide-area or global network **1118**, such as an Internet. Thus, the computer platform **1101** can access network resources located anywhere on the Internet **1118**, such as a remote network storage/server **1119**. On the other hand, the computer platform **1101** may also be accessed by clients located anywhere on the local area network **1115** and/or the Internet **1118**. The network clients **1120** and **1121** may themselves be implemented based on the computer platform similar to the platform **1101**.

Local network **1115** and the Internet **1118** both use electrical, electromagnetic or optical signals that carry digital data streams. The signals through the various networks and the signals on network link **1114** and through communication interface **1113**, which carry the digital data to and from computer platform **1101**, are exemplary forms of carrier waves transporting the information.

Computer platform **1101** can send messages and receive data, including program code, through the variety of network(s) including Internet **1118** and LAN **1115**, network link **1114** and communication interface **1113**. In the Internet example, when the system **1101** acts as a network server, it might transmit a requested code or data for an application program running on client(s) **1120** and/or **1121** through Internet **1118**, gateway **1117**, local area network **1115** and communication interface **1113**. Similarly, it may receive code from other network resources.

## 12

The received code may be executed by processor **1105** as it is received, and/or stored in persistent or volatile storage devices **1108** and **1106**, respectively, or other non-volatile storage for later execution. In this manner, computer system **1101** may obtain application code in the form of a carrier wave.

It should be noted that embodiments of the present invention are not limited to any specific firewall system. For example, the inventive policy-based content processing system may be used in any of the three firewall operating modes and specifically NAT, routed and transparent.

Finally, it should be understood that processes and techniques described herein are not inherently related to any particular apparatus and may be implemented by any suitable combination of components. Further, various types of general purpose devices may be used in accordance with the teachings described herein. It may also prove advantageous to construct specialized apparatus to perform the method steps described herein. The present invention has been described in relation to particular examples, which are intended in all respects to be illustrative rather than restrictive. Those skilled in the art will appreciate that many different combinations of hardware, software, and firmware will be suitable for practicing the present invention. For example, the described software may be implemented in a wide variety of programming or scripting languages, such as Assembler, C/C++, perl, shell, PHP, Java, etc.

Moreover, other implementations of various embodiments of the present invention will be apparent to those skilled in the art from consideration of the specification and practice of the invention disclosed herein. Various aspects and/or components of the described embodiments may be used singly or in any combination in the computerized network content processing system. It is intended that the specification and examples be considered as exemplary only, with a true scope and spirit of the invention being indicated by the following claims.

What is claimed is:

1. A computer-implemented method for processing application-level content of network service protocols, the method comprising:

redirecting a first network connection associated with a first network service protocol, by a networking subsystem implemented within a kernel of an operating system of a firewall device, to a first proxy module of a plurality of proxy modules within the firewall device that is configured to support the first network service protocol, wherein at least two of the plurality of proxy modules are configured to support different network service protocols;

retrieving, by the first proxy module, one or more content processing configuration schemes associated with a matching firewall policy for the first network service protocol and the first network connection; and

processing, by the first proxy module, application-level content of a packet stream associated with the network connection by:

reassembling the application-level content from a plurality of packets of the packet stream; and

scanning the application-level content based on the retrieved one or more content processing configuration schemes.

2. The method of claim 1, further comprising:

receiving the first network connection, at the networking subsystem;

determining, by the networking subsystem, the first network service protocol; and

13

identifying, by the networking subsystem, the matching firewall policy.

3. The method of claim 1, wherein the first network service protocol comprises at least one of a group consisting of HyperText Transfer Protocol (HTTP), File Transfer Protocol (FTP), Simple Mail Transfer Protocol (SMTP), Post Office Protocol 3 (POP3), Internet Message Access Protocol (IMAP) and Server Message Block/Common Internet File System (SMB/CIFS).

4. The method of claim 2, wherein during the identifying, the matching firewall policy is selected from a plurality of predefined firewall policies based on a source network address associated with the first network connection, a destination network address associated with the first network connection and the first network service protocol.

5. The method of claim 1, wherein during the retrieving, the one or more content processing configuration schemes are selected from a plurality of predefined content processing configuration schemes.

6. The method of claim 1, further comprising authenticating a user associated with the first network connection and rejecting the first network connection if the authentication is unsuccessful.

7. The method of claim 6, wherein the authenticated user is associated with one or more user groups.

8. The method of claim 7, wherein the retrieved one or more content processing configuration schemes are assigned to the one or more user groups.

9. The method of claim 6, wherein the retrieved one or more content processing configuration schemes are determined by an identity of the authenticated user.

10. The method of claim 1, wherein the plurality of proxy modules are implemented within the kernel.

11. The method of claim 1, wherein the plurality of proxy modules are implemented as applications executing in a user space provided by the operating system.

12. The method of claim 1, wherein the plurality of proxy modules are selected from a plurality of proxy subsystems provided to handle multiple protocols and multiple instances of a proxy module.

13. The method of claim 12, wherein the first network service protocol comprises HyperText Transport Protocol (HTTP) and said scanning the application-level content comprises performing a plurality of antivirus scanning, filename blocking, quarantining, banned word filtering, and Uniform Resource Locator (URL) blocking.

14. The method of claim 12, wherein a second network service protocol of the different network service protocols comprises File Transfer Protocol (FTP) and said scanning the application-level content of the packet stream associated with a second network connection comprises performing a plurality of antivirus scanning, filename blocking and quarantining.

15. The method of claim 12, wherein a second network service protocol of the different network service protocols Simple Mail Transfer Protocol (SMTP), Post Office Protocol 3 (POP3) or Internet Message Access Protocol (IMAP) and said scanning the application-level content of the packet stream associated with a second network connection comprises performing a plurality of antivirus scanning, filename blocking, quarantining, banned word filtering and spam blocking.

16. The method of claim 12, wherein a second network service protocol of the different network service protocols Server Message Block/Common Internet File System (SMB/CIFS) and said scanning the application-level content of the packet stream associated with a second network connection

14

comprises performing a plurality of antivirus scanning, filename blocking and quarantining.

17. A firewall system for processing application-level content of network service protocols, the firewall system comprising:

a non-transitory memory having stored therein a configuration database including a plurality of firewall policies and a plurality of content processing configuration schemes;

a networking interface receiving a network connection;

a plurality of proxy modules each supporting one or more network protocols of the plurality of network protocols, wherein at least two of the plurality of proxy modules are configured to support different network service protocols; and

a networking subsystem (i) receiving the network connection from the networking interface, (ii) identifying a firewall policy of the plurality of firewall policies that is appropriate for the network connection and (iii) redirecting the network connection to a proxy module of the plurality of proxy modules based on a network protocol associated with the network connection; and

wherein the proxy module processes application-level content of a packet stream associated with the network connection by:

reassembling the application-level content from a plurality of packets of the packet stream; and

scanning the application-level content based on one or more content processing configuration schemes of the plurality of content processing configuration schemes that have been associated with the firewall policy by an administrator of the firewall system.

18. The firewall system of claim 17, wherein the networking interface comprises a physical network interface.

19. The firewall system of claim 17, wherein the networking interface comprises a logical network interface.

20. The firewall system of claim 17, wherein the proxy module retrieves the one or more content processing configuration schemes from the configuration database.

21. The firewall system of claim 17, wherein the processing of application-level content by the proxy module comprises applying filters to the application-level content.

22. The firewall system of claim 17, wherein the network service protocol comprises HyperText Transport Protocol (HTTP) and wherein the plurality of content processing configuration settings include content processing configuration settings for each of antivirus scanning, filename blocking, quarantining, banned word filtering, and Uniform Resource Locator (URL) blocking.

23. The firewall system of claim 17, wherein the network service protocol comprises File Transfer Protocol (FTP) and wherein the plurality of content processing configuration settings include content processing configuration settings for each of antivirus scanning, filename blocking and quarantining.

24. The firewall system of claim 17, wherein the network service protocol comprises Simple Mail Transfer Protocol (SMTP), Post Office Protocol 3 (POP3) or Internet Message Access Protocol (IMAP) and wherein the plurality of content processing configuration settings include content processing configuration settings for each of antivirus scanning, filename blocking, quarantining, banned word filtering and spam blocking.

25. The firewall system of claim 17, wherein the network service protocol comprises Server Message Block/Common Internet File System (SMB/CIFS) and wherein the plurality of content processing configuration settings include content

15

processing configuration settings for each of antivirus scanning, filename blocking and quarantining.

26. A non-transitory computer-readable storage medium tangibly embodying instructions, which when executed by a firewall system, cause the firewall system to perform a method for processing application-level content, the method comprising:

redirecting a network connection associated with a network service protocol, by a networking subsystem implemented within a kernel of an operating system of a firewall device, to a proxy module of a plurality of proxy modules within the firewall device that is configured to support the network service protocol, wherein at least two of the plurality of proxy modules are configured to support different network service protocols;

retrieving, by the proxy module, one or more content processing configuration schemes associated with a matching firewall policy for the network service protocol and the network connection; and

processing, by the proxy module, application-level content of a packet stream associated with the network connection by:

reassembling the application-level content from a plurality of packets of the packet stream; and

scanning the application-level content based on the retrieved one or more content processing configuration schemes.

27. The computer-readable storage medium of claim 26, wherein the method further comprises:

receiving, by the networking subsystem, the network connection;

determining, by the networking subsystem, the network service protocol; and

16

identifying, by the networking subsystem, the matching firewall policy.

28. The computer-readable storage medium of claim 26, wherein the network service protocol comprises at least one of a group consisting of HyperText Transfer Protocol (HTTP), File Transfer Protocol (FTP), Simple Mail Transfer Protocol (SMTP), Post Office Protocol 3 (POP3), Internet Message Access Protocol (IMAP) and Server Message Block/Common Internet File System (SMB/CIFS).

29. The computer-readable storage medium of claim 27, wherein during the identifying, the matching firewall policy is selected from a plurality of predefined firewall policies.

30. The computer-readable storage medium of claim 26, wherein during the retrieving, the one or more content processing configuration schemes are selected from a plurality of predefined content processing configuration schemes.

31. The computer-readable storage medium of claim 26, wherein the method further comprises authenticating a user associated with the network connection and rejecting the network connection if the authentication is unsuccessful.

32. The computer-readable storage medium of claim 31, wherein the authenticated user is associated with one or more user groups.

33. The computer-readable storage medium of claim 32, wherein the retrieved one or more content processing configuration schemes are assigned to the one or more user groups.

34. The computer-readable storage medium of claim 31, wherein the retrieved one or more content processing configuration schemes are determined by an identity of the authenticated user.

\* \* \* \* \*